

DIAMOND DRILLING



41009SE0037 14 OSWAY

010

TOWNSHIP: Osway

REPORT No.: 14

WORK PERFORMED BY: Hargor Resources

<u>CLAIM No.</u>	<u>HOLE No.</u>	<u>FOOTAGE</u>	<u>DATE</u>	<u>NOTE</u>
P 683454	H-1	256.0.	Dec/82	(1)
P 683451	H-2	109.0.	Dec/82	(1)
P 530805	H-3	150.0.	Jan/82	(1)
P 530805	H-4	241.0.	Jan/83	(1)
P 530804	H-5	244.0.	Jan/83	(1)

[Handwritten signature]
1000'

NOTES: (1) #37-83

FROM	TO	DESCRIPTION	ANALYTICAL RESULTS								
			SAMPLE	FROM	TO	LENGTH	Co (ppm)	Zn (ppm)	Ag (ppm)	Au (ppb)	
165	167	Mafic pyroclastic tuff with small chloritic fragments									
167	175.5	Intermediate to mafic well foliated (55°CA) lapilli tuff									
175.5	207.5	Mafic chloritic ash tuff very fine grained with occasional narrow pyroclastic quartz veins reaching 1" in width									
207.5	213	Mafic chloritic lapilli tuff, slightly foliated									
213	235	Intermediate to mafic very fine grained ash tuff, slightly foliated with thin siliceous interbeds slightly contorted but generally at 65° (CA) (1 foot core was ground at 221-222)									
235	256	Siliceous iron formation, strongly foliated with interbeds of intermediate tuff enriched in pyrite	10503	235	235.5	3'					
			10504	238.5	243.5	5'					
			10505	243.5	247.5	4'					
			10506	247.5	256	8'					
		235 - 238.5 2-3% py									
		238.5 - 243.5 2.5% py									
		243.5 - 247.5 1-2% py									
		247.5 - 256 2.5% py									
		last 3 feet core due to blockiness, bit jammed and hole was abandoned at T.D. = 256'									

[Handwritten signature]

FROM	TO	DESCRIPTION	ANALYTICAL RESULTS							
			SAMPLE	FROM	TO	LENGTH	Cu (ppm)	Zn (ppm)	Ag (ppm)	Au (ppb)
78'	79'	Very fine grained mafic ash tuff								
79'	84'	Intermediate ash tuff bedded at 60°CA with silicious carbonate interbeds containing traces of pyrite								
84'	84'3"	Quartz carbonate vein								
84'3"	116'	Intermediate - mafic well bedded pyroclastic tuff with silicious interbeds containing pyrite. Bedding at 60°CA								
116'	127'6"	Banded chert horizon containing multi phase depositional features including 1) white-creamy silicious quartz-carbonate 2) clear silica (pure quartz phase) 3) Sulphide - chert laminae brecciated Up to 25% sulphides is noted, sulphides include pyrite, chalcopyrite, pyrrhotite, as well as minor pentlandite, sphalerite and arsenopyrite. A small mafic dyke is noted from 119' to 120'								
	116' to 120'	25% sulphides	10507	116	120	4'				
	120' to 125'	25% sulphides	10508	120	125	5'				
	125' to 127'6"	20% sulphides	10509	125	127'6"	25'				
127'6"	139'6"	Intermediate to mafic pyroclastic tuff and breccia containing abundant sulphides								
	127'6" to 132'6"	10% sulphides	10510	127'6"	132'6"	5'				
	132'6" to 137'6"	7% sulphides	10511	132'6"	137'6"	5'				
	137'6" to 139'6"	5% sulphides	10512	137'6"	139'6"	2'				
139'6"	150'	Very fine grained mafic to intermediate well foliated ash tuff with occasional traces of pyrite and small 1/4" purple garnet crystals. - 5 feet of core was ground in this section								
	150'	end of hole								

Handwritten signature

FROM	TO	DESCRIPTION	ANALYTICAL RESULTS								
			SAMPLE	FROM	TO	LENGTH	Cu (ppm)	Zn (ppm)	Ag (ppm)	Au (ppb)	
120'	121'	Highly brecciated quartz vein containing inclusions of intermediate tuff									
121'	130'	Fine grained intermediate ash tuff with very thin interbeds of carbonate, and occasional tracer of pyrite throughout.									
130'	156'	Intermediate pyroclastic tuff interbedded with felsic tuffaceous fragments which are generally aligned with bedding. Short sections contain occasional traces of pyrite.									
		134' to 138' tr. pyrite	10513	134	138	4'					
156'	174'	Intermediate ash-lapilli tuff with numerous carbonate interbeds, occasional traces pyrite of short (4') sections.									
174'	188'	Brecciated banded chert-quartz-sulphide horizon. Dominant sulphides include pyrite, pyrrhotite, and chalcopyrite while lesser sulphides include pentlandite, sphalerite and arsenopyrite. Mafic dyke from 180-182'									
		174 - 179 40% sulphides	10514	174	179	5'					
		179 - 184 20% sulphides	10515	179	184	5'					
		184 - 188 10% sulphides	10516	184	188	4'					
188'	210'	Intermediate pyroclastic tuff containing purple garnet fragments. Bedding is at 50° CA. Entire section contains up to 5% pyrite forming distinct pyritiferous beds									
		188 - 193 5% sulphides	10517	188	193	5'					
		193 - 198 2-3% sulphides	10518	193	198	5'					
		198 - 203 5% sulphides	10519	198	203	5'					
		203 - 207 3% sulphides	10520	203	207	4'					
		207 - 210 2% sulphides	10521	207	210	3'					

FROM	TO	DESCRIPTION	ANALYTICAL RESULTS								
			SAMPLE	FROM	TO	LENGTH	Cu (ppm)	Zn (ppm)	Ag (ppm)	Au (ppb)	
210'	233'	Ultrafine silicified felsic ash tuff containing up to 2% pyrite in pyritiferous beds parallel to bedding at 56°C.A									
	218 - 223	2% pyrite	10522	218	223	5'					
	223 - 228	1% pyrite	10523	223	228	5'					
	228 - 233	1% pyrite	10524	228	233	5'					
233	241	Ultrafine silicified ash tuff									
		End of Hole 241'									

[Handwritten signature]

HARGOR RESOURCES INC.

INCLINATION TESTS

DEPTH	DIP	DEPTH	DIP	DEPTH	DIP
COLLAR	-045°				

HOLE NO: H-5

LOCATION: OSWAY TWP. GRID: CLAIM 530804 ELEVATION:
 LENGTH: 244' HORIZ: 139.9' VERT: 194.9' AZIMUTH: 180° CORE SIZE: BQ
 RECOVERY: LOGGED BY: N. NOVAK DATE: JAN. 12/83

PROJECT: Hargor (Osway)
 STARTED:
 FINISHED: Dec. 23 1982

FROM	TO	DESCRIPTION	ANALYTICAL RESULTS						
			SAMPLE	FROM	TO	LENGTH	Cu (ppm)	Zn (ppm)	Ag (ppm)
0	8'	Glacial Overburden							
8	20'	Intermediate to felsic fine grained tuffaceous interbeds, fractures filled with Fe carbonate due to surface weathering. Quartz carbonate vein at 17.6" to 17.9" concordant to bedding at 45° CA.							
20'	46'	Intermediate massive flow very fine grained with wispy chloritic fragments and quartz carbonate veinlets 1/4" cross-cutting the flow at various angles.							
46'	91'	Intermediate to mafic pyroclastic to lapilli tuff and breccia with silicious carbonate interbeds approx. 1/2" thick and quartz carbonate veinlets cross-cutting bedding plane.							
91'	92'	Bull quartz vein cross cutting tuffaceous beds.							
92'	97'	Intermediate to mafic pyroclastic-lapilli tuff.							
97'	101'	Intermediate to mafic pyroclastic tuff with fine chloritic fragments.							
101'	108'	Intermediate to mafic lapilli tuff with short brecciated sections.							
108'	118'	Intermediate to mafic pyroclastic tuff.							
118'	123'	Intermediate to mafic lapilli tuff and breccia.							
123'	132'	Intermediate to mafic ash to lapilli tuff with banded beds at 60° CA. Occasional flecks of pyrite throughout.							

HARGOR RESOURCES INC.

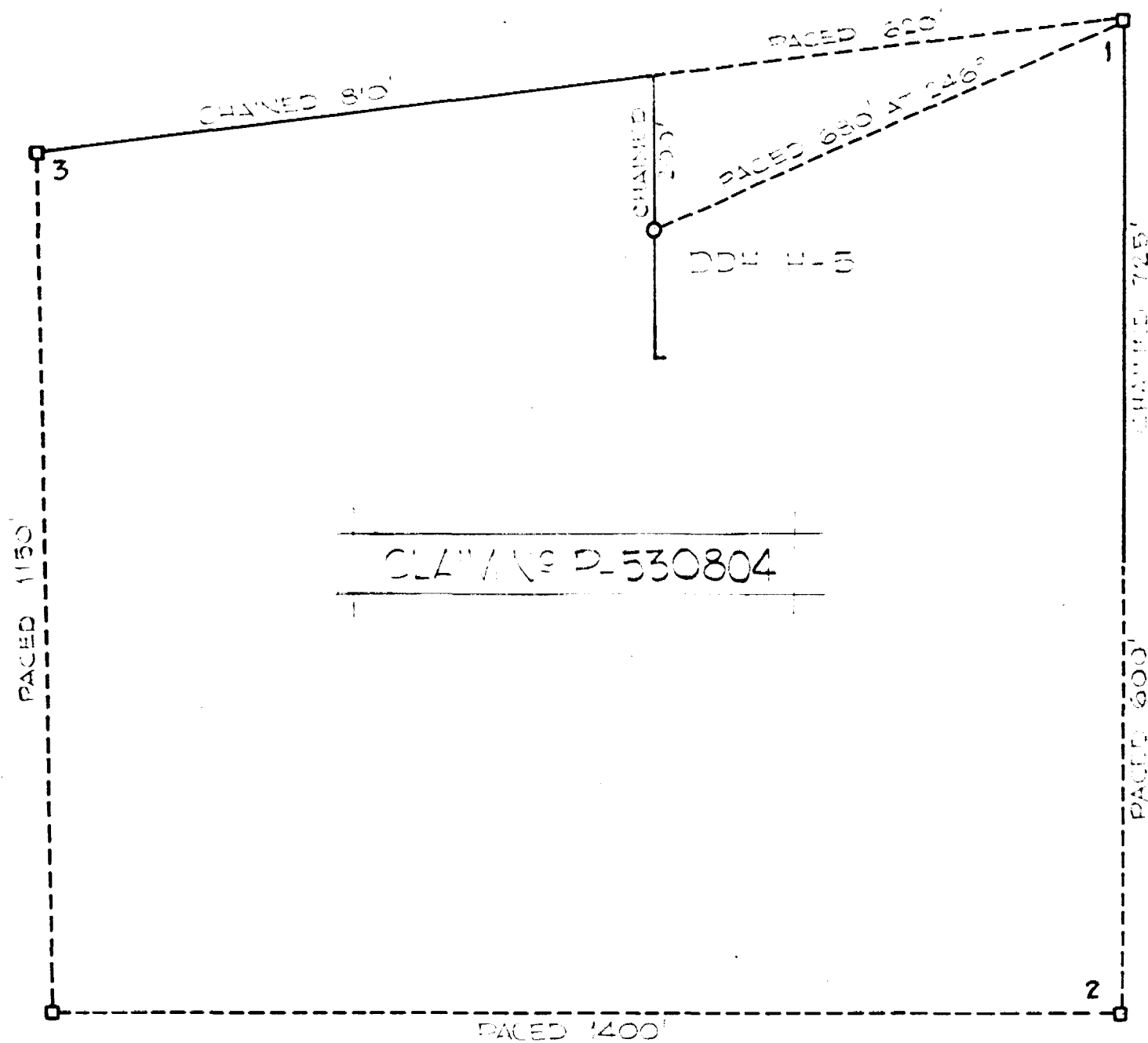
PROJECT: Hargor (OSWAY)

HOLE NO: H 5

PAGE 2 of 2

FROM	TO	DESCRIPTION	ANALYTICAL RESULTS										
			SAMPLE	FROM	TO	LENGTH	Cu (ppm)	Zn (ppm)	Ag (ppm)	Au (ppb)			
132'	148'	Brecciated banded chert-quartz-sulphide horizon. Sulphides include pyrite, chalcopyrite, and pyrrhotite as well as minor amounts of pentlandite, sphalerite and arsenopyrite.											
		132 to 137 40% sulphides	10525	132	137	5							
		137 to 142 45% sulphides	10526	137	142	5							
		142 to 148 40% sulphides	10527	142	148	6							
148'	169'	Very fine grained intermediate ash tuff containing abundant carbonate and felsic interbeds and numerous cross cutting quartz carbonate veinlets, with the occasional trace of pyrite.											
169'	180'	Brecciated banded chert-quartz-sulphide horizon. Zone not as highly mineralized as 132' to 148'.											
		169 to 174 25% sulphides	10528	169	174	5							
		174 to 180 15% sulphides	10529	174	180	6							
180'	217'	Intermediate to mafic tuff, highly silicified and well bedded, pyrite is present as individual crystals in pyritiferous beds.											
		180 to 185 tr-1% pyrite	10530	180	185	5							
		191 to 196 tr-10% pyrite	10531	191	196	5							
217	224	Silicified lapilli tuff (intermediate) with distinct blue quartz eyes. Bedding at 70°CA.											
224	225	Quartz carbonate vein with feldspathic (orange) alteration at contact. zone											
225	244	Silicified lapilli tuff as above.											
		End of Hole 244'											

Handwritten signature/initials



DDE 1-5 NOTES

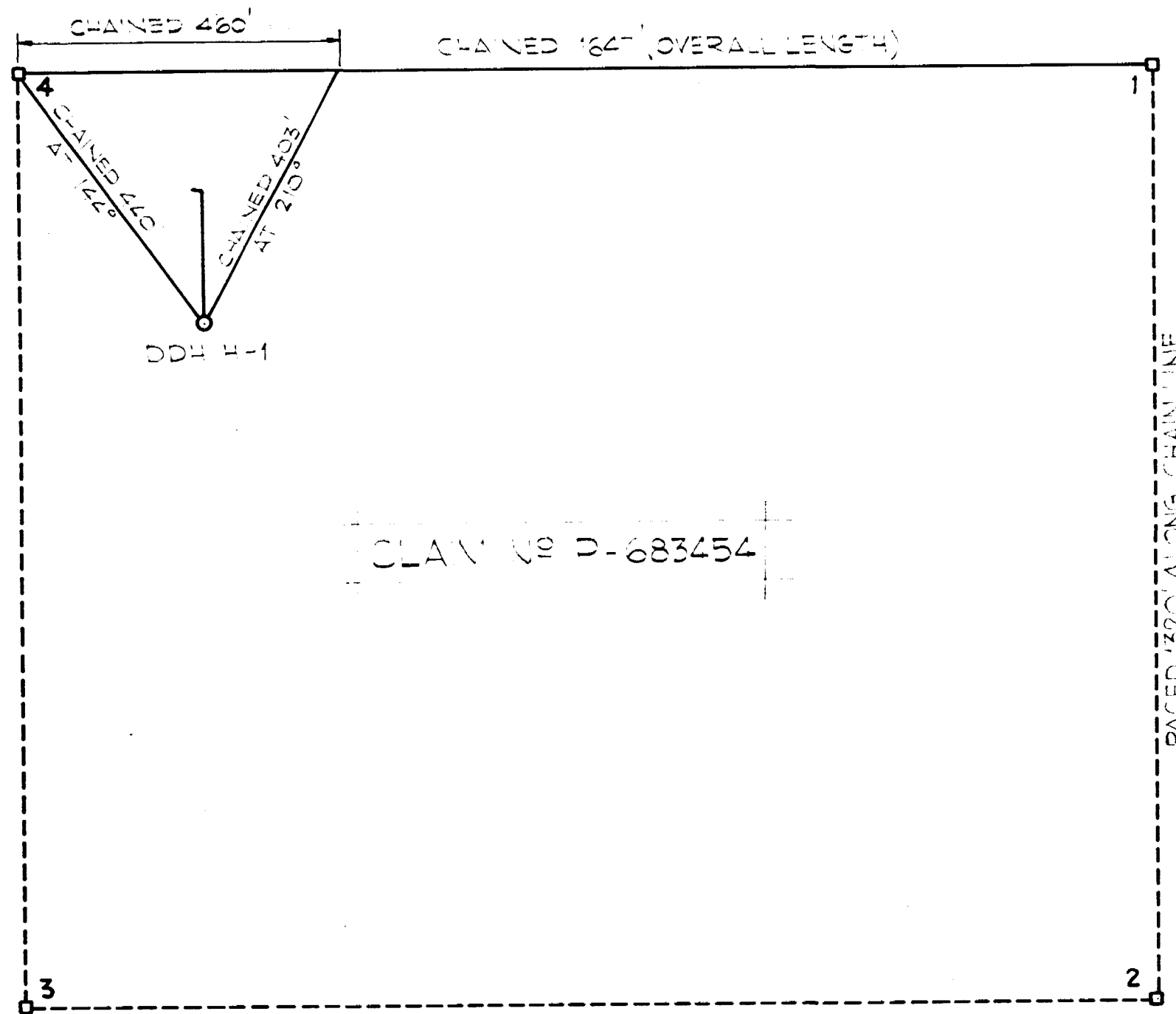
- INITIAL AZIMUTH 180°
- INITIAL DIP -045°
- TOTAL DEPTH 242'
- HORIZONTAL COMP. 172.5'
- VERT. COMP. 172.5'

HARGOR RESOURCES INC.

OSWAY TOWNSHIP, ONTARIO
PORCUPINE MINING DIVISION
DISTRICT OF SUDBURY

COMPILED BY NEIL NOVAK
DRAWN BY P. KLIVEK
JANUARY 22, 1983

SCALE 1" = 200'



CLAIM No D-683454

DDH H-1 NOTES

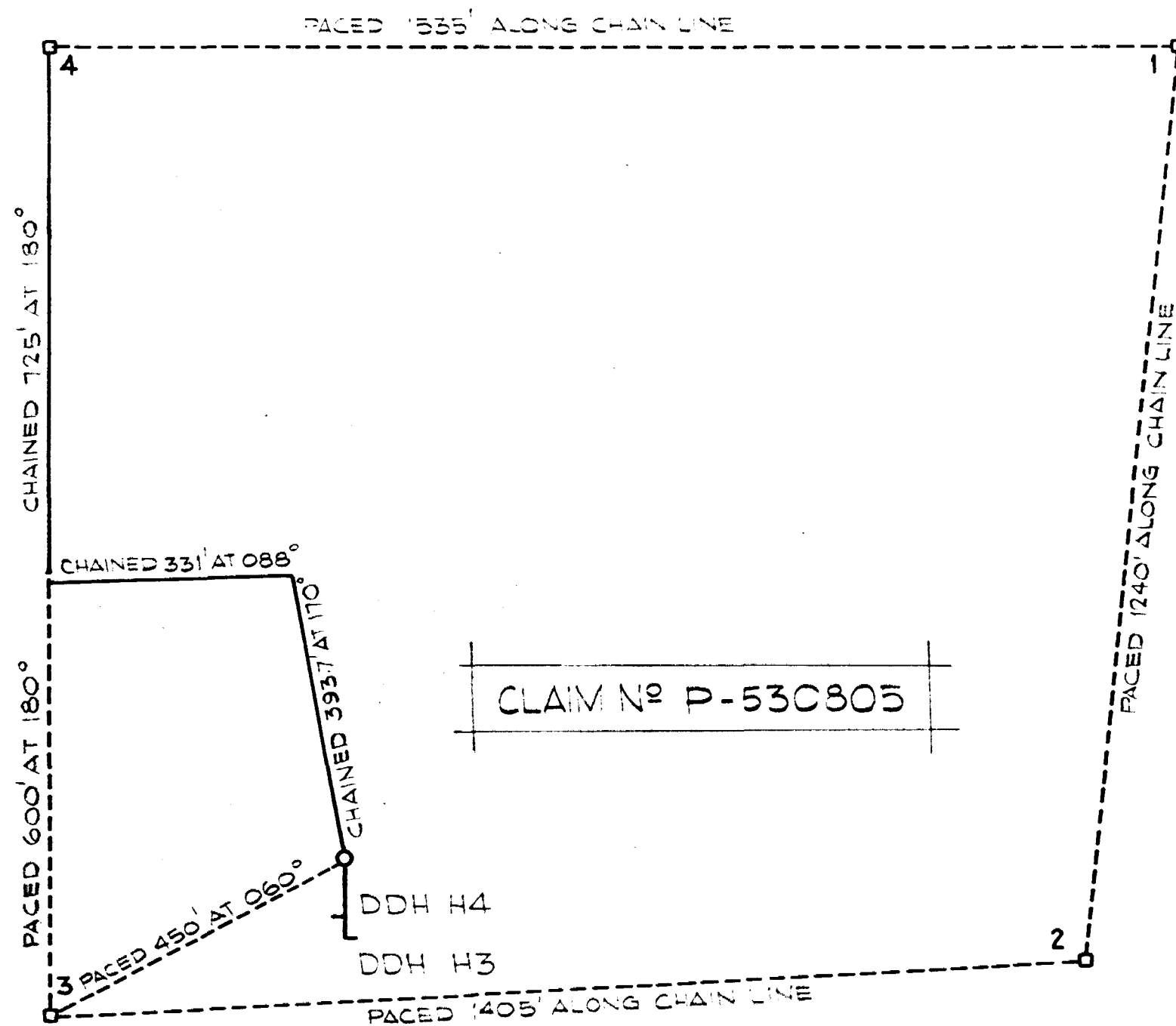
- INITIAL AZIMUTH 000°
- INITIAL DIP -045°
- TOTAL DEPTH 256'
- HORIZONTAL COVP. 18'
- VERTICAL COVP. 18'

HARGOR RESOURCES INC.

OSWAY TOWNSHIP, ONTARIO
PORCUPINE MINING DIVISION
DISTRICT OF SUDBURY

COMPILED BY NEIL NOVAK
DRAWN BY P. KLIMEK
JANUARY 21, 1983

SCALE 1" = 200'



NOTES

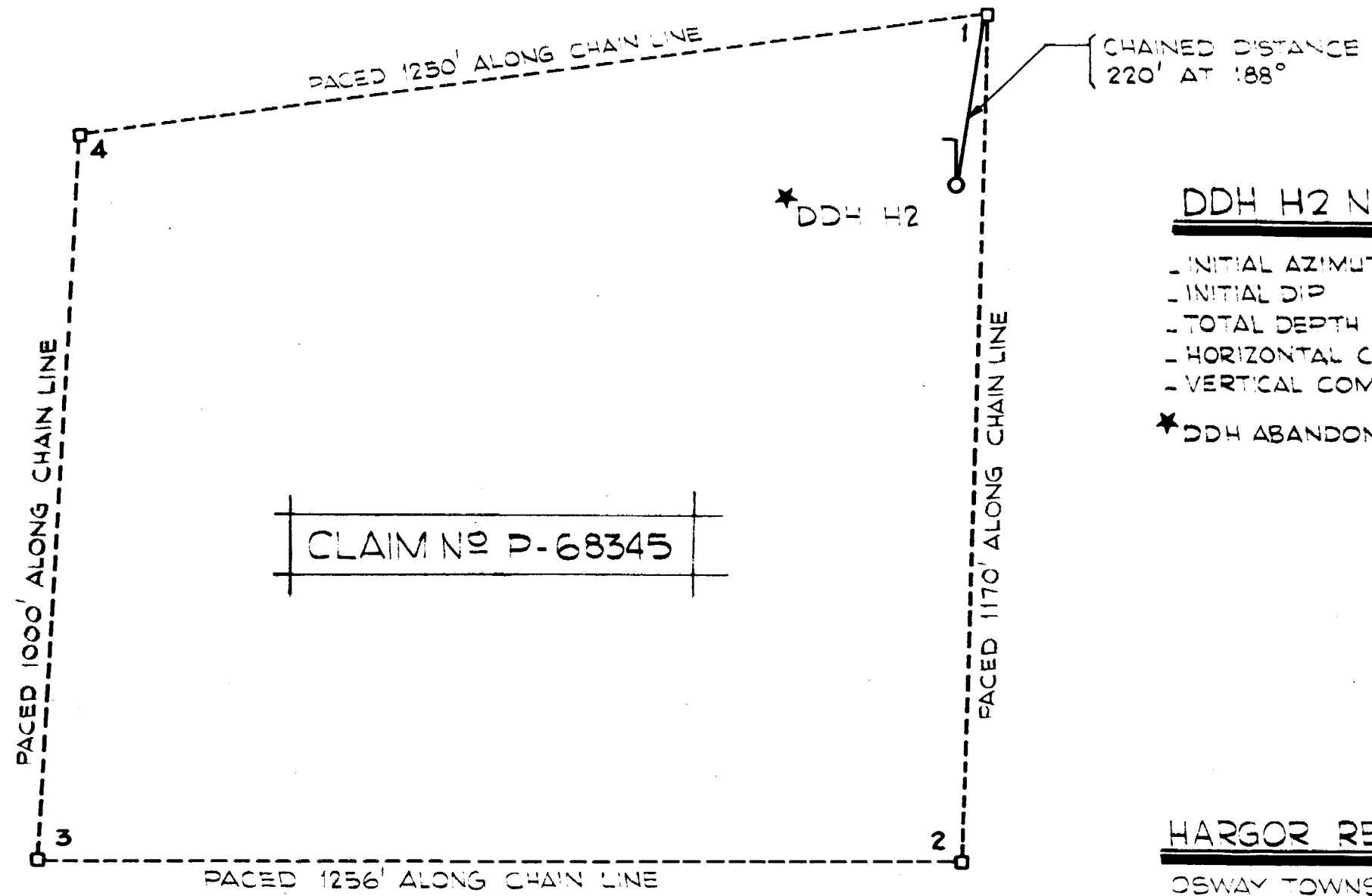
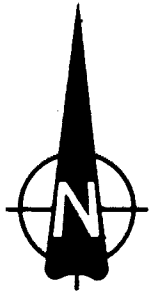
	DDH H-3	DDH H-4
INITIAL AZIMUTH	180°	180°
INITIAL DIP	-045°	-070°
TOTAL DEPTH	150'	124'
HORIZONTAL COMP.	106'	82.4'
VERTICAL COMP.	106'	226.5'

HARGOR RESOURCES INC.

OSWAY TOWNSHIP, ONTARIO
PORCUPINE MINING DIVISION
DISTRICT OF SUDBURY

COMPILED BY NEIL NOVAK
DRAWN BY P. KLIMEK
JANUARY 22, 1983

SCALE 1" = 200'



DDH H2 NOTES

- INITIAL AZIMUTH 000°
- INITIAL DIP -055°
- TOTAL DEPTH 109'
- HORIZONTAL COMP. 62.5'
- VERTICAL COMP. 89.3'

* DDH ABANDONED IN OVERBURDEN

HARGOR RESOURCES INC.

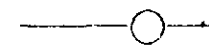
OSWAY TOWNSHIP, ONTARIO
PORCUPINE MINING DIVISION
DISTRICT OF SLODBURY

COMPILED BY NEIL NOVAK
DRAWN BY P. KLIMEK
JANUARY 22, 1983

SCALE 1" = 200'



H.E.M CONDUCTOR



DRILL HOLE

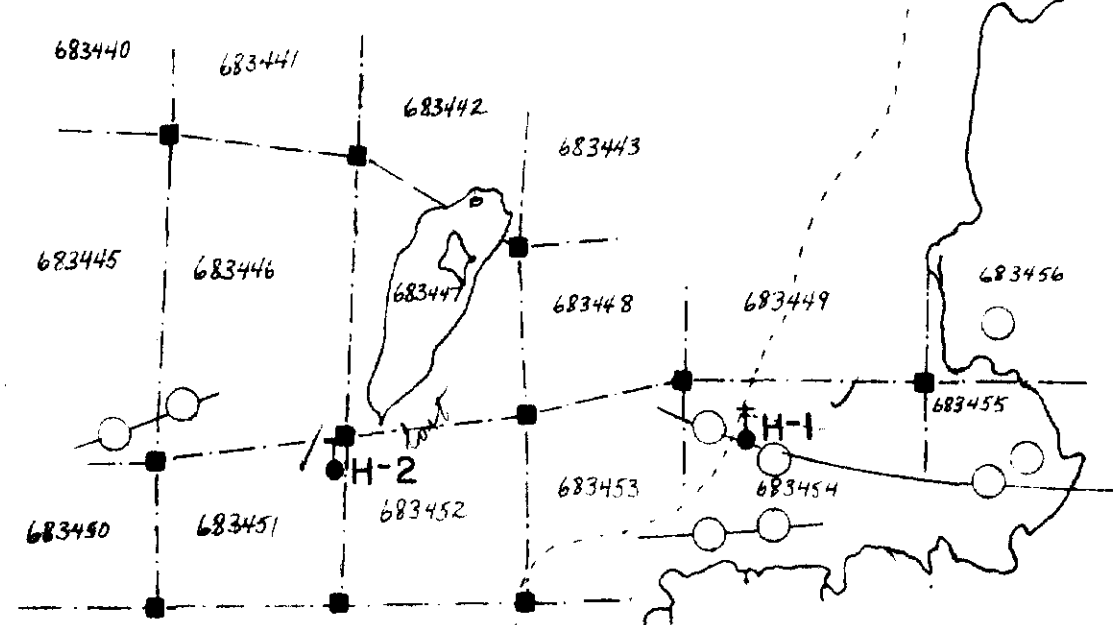
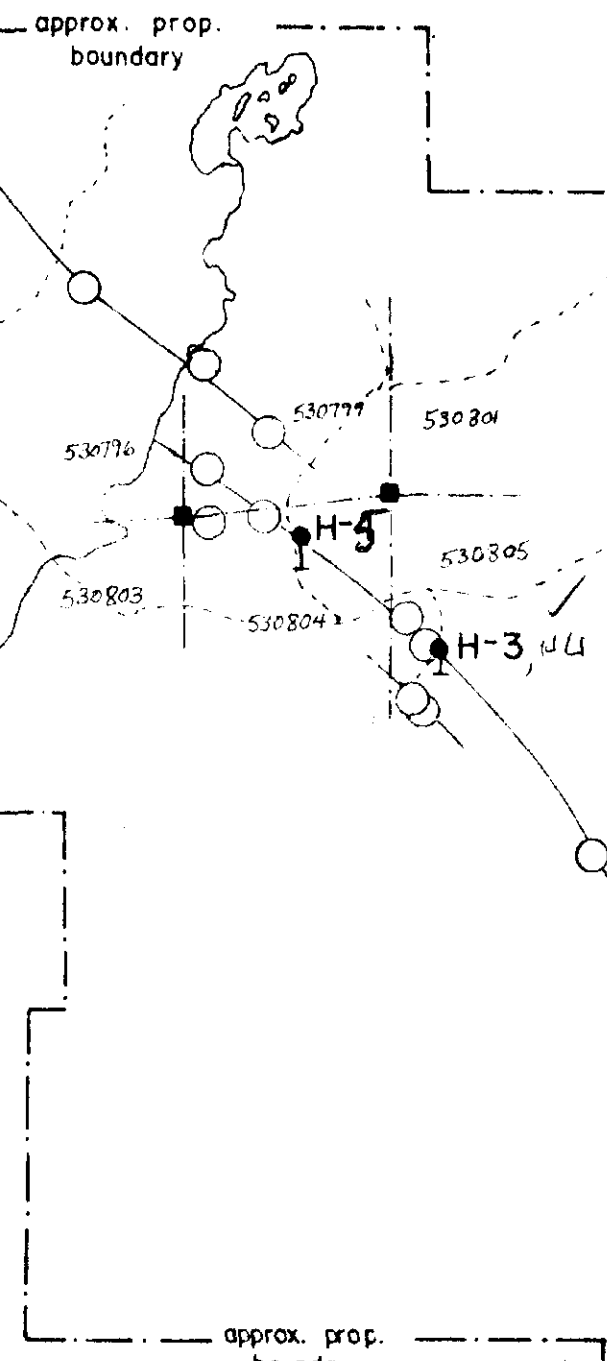


HARGOR RESOURCES INC.

Drill Hole Location Plan
Osway Twp.

DRAWING NO.	COMPILED BY:	DRAWN BY:	SCALE	DATE
HRI-82-1	N.D.N	N.D.N, DB	1" = 15,840	DEC./82

Handwritten signature



OPEEPEESWAY LAKE

JEROME
MINE SITE

OSWAY TWP.
HUFFMAN TWP.

BOUNDARY
LAKE

OSWAY TWP.
ARBUTUS TWP.

