



41009SE0046 2.11250 YEO

010

REPORT TO BRYNDON VENTURES, INC.  
ON THEIR KINGBIRD PROPERTY  
YEO TOWNSHIP, ONTARIO

RECEIVED

MAY 27 1988

MINING LANDS SECTION

May 1988

C. von Hessert & Associates Ltd.

*See  
on this file*

TABLE OF CONTENTS



41009SE0046 2.11250 YEO

010C

<u>SECTION</u>	<u>PAGE</u>
1. Introduction	1
2. Summary	2
3. Property Location and History	3
4. 1988 Winter Program	4
5. Conclusions and Recommendations	5
6. Certificate	6
7. Appendix: Sample Depths and Assays	7
Location, claim and drill hole map in back pocket	

## 1. INTRODUCTION

In the winter of 1987/88, the management of Bryndon Ventures, Inc. retained C. von Hessert & Associates to prepare an exploration program for their Kingbird property in Yeo Township, Ontario, so that the necessary assessment credits might be applied to keep the claims in good standing while completing work which was technically proper.

A program of overburden drilling using a Pionjar plugger was recommended and carried out in the months of January and February, 1988. This report presents the results.

## 2. SUMMARY

During the months of January and February 1988, C. von Hessert & Associates collected two hundred and forty three basal till samples for gold and silver analysis on Bryndon's Kingbird property, Yeo Township, Ontario. The samples were taken using a Pionjar plugger.

The highest gold anomaly obtained was 138 parts per billion. Eighteen samples returned assays greater than 100 parts per billion gold; with a few exceptions, the remainder reported less than 3 parts per billion gold. No sample assayed for silver exceed two parts per billion silver.

Anomalous gold samples cluster in the northwest corner of the claim group and may result from auriferous iron formations inferred to underlay the property. Alternately, this pattern may be attributed to a general lessening in the depth of overburden in this area resulting in better sample collection than in other parts of the property or a change type of glacial cover. Geologic mapping is recommended to provide guidance for future work.

### 3. PROPERTY LOCATION AND HISTORY

The Kingbird claims are located in Yeo Township approximately 30 kilometers southwest of Gogama, a community situated on highway 144 between Timmins and Sudbury.

The property, as presently constituted, consists of the following claims;

P-682400, 682406 to 682412, both inclusive, 783882 to 783913, both inclusive, and 783922 to 783936 both inclusive, situate in Porcupine Mining Division.

The claims are accessible by the "Yeo Road" which links into Eddy Road and the highway running south from Gogama. The property is portrayed on the location map in back pocket of this report.

The property lies within the Swayze gold belt, a typical Archean greenstone synclinorium.

Prior to 1985 and commencement of the initial Bryndon exploration program, little exploration work on this property was recorded in government assessment files other than regional airborne geophysical surveys. In 1985 Nominex (a company controlled by Niel Novak, geologist) undertook a program of broadly spaced linecutting followed by a VLF-EM survey, mapping, sampling and trenching with a backhoe. Results were inconclusive and it was the decision of management to reduce their holdings from 78 claims to the present 55.

#### 4. 1988 WINTER PROGRAM

The 1988 winter exploration program consisted of an overburden drill program designed to explore the northern portion of Bryndon's holdings in areas where government geologic maps suggested the opportunity for success was greatest. A baseline was cut and picket lines established every four hundred feet. Drill holes were spaced at two hundred foot intervals along the picket lines. A total of two hundred and forty three samples were recovered.

Drilling was accomplished using a Pionjar plugger. The program was supervised in the field by Richard Sproule, F.G.A.C., of Timmins, Ontario. Messers Scott and Jarret Hodges and Mike Vanderheide of Sweaburg, Ontario operated the drill and cut the lines. Work commenced on January 10, 1988 and was completed by the end of February, 1988. The samples were sent to Barringer Magenta for geochemical analysis for gold and silver.

## 5. CONCLUSIONS AND RECOMMENDATIONS

Two hundred and forty three samples of basal till were collected using a Pionjar Plugger. Ten holes returned insufficient samples for assay, eighteen samples returned geochemical assays above 100 parts per billion gold and fifteen samples fell within the range of greater than 20 ppb and less than 100 ppb gold. The remainder, almost uniformly returned less than three parts per billion gold.

A review of the map in the back pocket shows that all of the samples defined as anomalous fall within the northwest quadrant of the Bryndon property. Ontario Geological Survey preliminary map 2449 shows this section of the property to underlain by tholietic basalts, feruginous and cherty sediments and cross cutting diabase dykes. Drilling suggests that overburden may shallow in this area of the property.

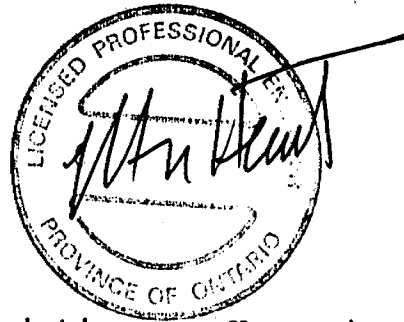
At this stage of property exploration, the pattern of anomalies is too ambiguous to assign with any certainty to a particular cause. The anomalies may result from lithologic units anomalously rich in gold, possibly iron formations, which are thought underlie this portion of the claims or may be caused by changes in depth of overburden and variations in the composition of the glacial till.

Geologic mapping is recommended to provide information on which to base the next stage of work.

6. CERTIFICATE OF QUALIFICATIONS

I, Christian von Hessert, certify that:

1. I am a consulting geologist residing on Rural Route # 4, BRIGHTON, Ontario with my office at Suite 306, 45 Richmond Street West, TORONTO, Ontario, Canada.
2. I graduated from Columbia University, N.Y. in 1968 with a BSc. and the University of Minnesota in 1971 with an MSc. and that I have worked as a geologist for 15 years.
3. I am a fellow of the Geological Association of Canada and a member of the Association of Professional Engineers of Ontario.



May 26, 1988

Christian von Hessert, P. Eng.



**SAMPLE DEPTHS AND ASSAY RESULTS**

<u>Hole</u>	<u>Depth in meters</u>	<u>Hole</u>	<u>Depth in Meters</u>
1	12	51	2
2	8	52	2
3	4	53	2
4	1	54	1.7
5	2	55	2
6	1	56	1.2
7	1	57	2
8	8	58	2
9	1	59	2.5
10	7	60	ns
11	9	61	8
12	1	62	7
13	1	63	ns
14	1.5	64	3
15	1	65	2
16	2.5	66	4
17	1	67	5
18	1.8	68	4.5
19	2.5	69	5
20	2	70	2
21	1	71	2
22	1.5	72	2
23	0.8	73	2
24	1.5	74	2.5
25	ns	75	2.5
26	12	76	2
27	11	77	2
28	0.5	78	1
29	2	79	2
30	1	80	1.5
31	1	81	3
32	4	82	9
33	1	83	8
34	1	84	5
35	1	85	3.5
36	1.5	86	2.5
37	2	87	2
38	1	88	3
39	1	89	2
40	3	90	2
41	4.8	91	3
42	3.5	92	2
43	2	93	3.5
44	2	94	2.5
45	3	95	4
46	5	96	3
47	2	97	1.5
48	1.5	98	3
49	2	99	1.5
50	2	100	1.5

<u>Hole</u>	<u>Depth in meters</u>	<u>Hole</u>	<u>Depth in Meters</u>
101	1	151	1
102	1	152	2
103	2	153	1
104	2.5	154	4
105	4	155	6
106	3	156	11
107	3	157	9
108	3	158	0.5
109	5	159	5
110	4	160	7
111	4	161	12
112	3	162	ns
113	1	163	2
114	2	164	2.5
115	2	165	3
116	3.5	166	3
117	2.5	167	1
118	2	168	2.5
119	1	169	1.5
120	2	170	0.5
121	2	171	3
122	4.5	172	2
123	4	173	1
124	3.5	174	5
125	2	175	1.5
126	4.5	176	2.5
127	2.5	177	3
128	2.5	178	3
129	2	179	1
130	5	180	5
131	1	181	9
132	1.5	182	2
133	3	183	2
134	5	184	2.5
135	2	185	6
136	2	186	4
137	1.5	187	4
138	3.5	188	2
139	2	189	2
140	1	190	3
141	7	191	2
142	ns	192	1
143	5	193	3.5
144	2	194	2
145	3	195	3
146	4	196	1.5
147	2	197	6
148	2.5	198	4.5
149	3	199	2
150	2	200	2

<u>Hole</u>	<u>Depth in meters</u>
201	3.5
202	2
203	4
204	4.5
205	3
206	1
207	2
208	2
209	1.5
210	3
211	2
212	1
213	1.5
214	2
215	4
216	2
217	6
218	4
219	1
220	2.5
221	2
222	1
223	2.5
224	1
225	3
226	5
227	1
228	1
229	2
230	3
231	4
232	1
233	1.5
234	2
235	2.5
236	4
237	6
238	2
239	1.5
240	2
241	2
242	4
243	

<u>Hole</u>	<u>Depth in Meters</u>
-------------	------------------------

**BARRINGER MAGENTA**

C.VON HESSERT & ASSOC. LTD.

WO NO: 88-1037

PAGE: 1

SAMPLE ID	AU PPB	AG PPM	SAMPLE ID	AU PPB	AG PPM	SAMPLE ID	AU PPB	AG PPM
DH#1	N/S	<.2	DH#46	<3	<.2	DH#91	<3	<.2
DH#2	<3	<.2	DH#47	<3	<.2	DH#92	<3	<.2
DH#3	<3	<.2	DH#48	<3	<.2	DH#93	<3	<.2
DH#4	<3	<.2	DH#49	<3	<.2	DH#94	<3	<.2
DH#5	<3	<.2	DH#50	<3	<.2	DH#95	<3	<.2
DH#6	<3	<.2	DH#51	<3	<.2	DH#96	<3	<.2
DH#7	<3	<.2	DH#52	<3	<.2	DH#97	<3	<.2
DH#8	<3	<.2	DH#53	<3	<.2	DH#98	<3	<.2
DH#9	<3	<.2	DH#54	<3	<.2	DH#99	<3	<.2
DH#10	<3	<.2	DH#55	<3	<.2	DH#100	<3	<.2
DH#11	<3	<.2	DH#56	<3	<.2	DH#101	<3	<.2
DH#12	<3	<.2	DH#57	<3	<.2	DH#102	<3	<.2
DH#13	<3	<.2	DH#58	<3	<.2	DH#103	N/S	<.2
DH#14	<3	<.2	DH#59	<3	<.2	DH#104	<3	<.2
DH#15	<3	<.2	DH#60	N/S	N/S	DH#105	<3	<.2
DH#16	<3	<.2	DH#61	<3	<.2	DH#106	<3	<.2
DH#17	<3	<.2	DH#62	<3	<.2	DH#107	<3	<.2
DH#18	<3	<.2	DH#63	N/S	N/S	DH#108	<3	<.2
DH#19	<3	<.2	DH#64	<3	<.2	DH#109	<3	<.2
DH#20	<3	<.2	DH#65	<3	<.2	DH#110	<3	<.2
DH#21	<3	<.2	DH#66	<3	<.2	DH#111	<3	<.2
DH#22	<3	<.2	DH#67	<3	<.2	DH#112	<3	<.2
DH#23	<3	<.2	DH#68	<3	<.2	DH#113	<3	<.2
DH#24	<3	<.2	DH#69	<3	<.2	DH#114	<3	<.2
DH#25	N/S	N/S	DH#70	<3	<.2	DH#115	<3	<.2
DH#26	<3	<.2	DH#71	15	<.2	DH#116	<3	<.2
DH#27	<3	<.2	DH#72	<3	<.2	DH#117	<3	<.2
DH#28	<3	<.2	DH#73	<3	<.2	DH#118	<3	<.2
DH#29	<3	<.2	DH#74	3	<.2	DH#119	<3	<.2
DH#30	<3	<.2	DH#75	<3	<.2	DH#120	<3	<.2
DH#31	<3	<.2	DH#76	3	<.2	DH#121	<3	<.2
DH#32	<3	<.2	DH#77	<3	<.2	DH#122	<3	<.2
DH#33	<3	<.2	DH#78	<3	<.2	DH#123	<3	<.2
DH#34	<3	<.2	DH#79	<3	<.2	DH#124	<3	<.2
DH#35	<3	<.2	DH#80	<3	<.2	DH#125	<3	<.2
DH#36	<3	<.2	DH#81	<3	<.2	DH#126	<3	<.2
DH#37	<3	<.2	DH#82	<3	<.2	DH#127	<3	<.2
DH#38	<3	<.2	DH#83	<3	<.2	DH#128	<3	<.2
DH#39	<3	<.2	DH#84	<3	<.2	DH#129	108	<.2
DH#40	<3	<.2	DH#85	<3	<.2	DH#130	<3	<.2
DH#41	<3	<.2	DH#86	<3	<.2	DH#131	<3	<.2
DH#42	<3	<.2	DH#87	<3	<.2	DH#132	<3	<.2
DH#43	<3	<.2	DH#88	<3	<.2	DH#133	<3	<.2
DH#44	<3	<.2	DH#89	<3	<.2	DH#134	<3	<.2
DH#45	<3	<.2	DH#90	<3	<.2	DH#135	<3	<.2

# BARRINGER MAGENTA

304 CARLINGVIEW DRIVE  
 REXDALE, ONTARIO  
 M9W 5G2  
 (416) 678-3870

FILE: T8-1037  
 DATE: 22/03/88  
 MATRIX: SOILS

C. VON HESSERT & ASSOC. LTD.

WD NO: 88-1037

PAGE: 1

SAMPLE ID	AU PPB	AG PPM	SAMPLE ID	AU PPB	AG PPM	SAMPLE ID	AU PPB	AG PPM
DH#136	<3	<.2	DH#181	<3	<.2	DH#226	<3	<.2
DH#137	<3	N/S	DH#182	<3	<.2	DH#227	45	<.2
DH#138	<3	<.2	DH#183	51	<.2	DH#228	51	<.2
DH#139	114	<.2	DH#184	51	<.2	DH#229	30	<.2
DH#140	<3	<.2	DH#185	<3	<.2	DH#230	<3	<.2
DH#141	<3	<.2	DH#186	<3	<.2	DH#231	<3	<.2
DH#142	N/S	N/S	DH#187	<3	<.2	DH#232	27	<.2
DH#143	<3	<.2	DH#188	108	<.2	DH#233	21	<.2
DH#144	<3	<.2	DH#189	96	<.2	DH#234	24	<.2
DH#145	<3	<.2	DH#190	<3	<.2	DH#235	24	<.2
DH#146	<3	<.2	DH#191	<3	<.2	DH#236	<3	<.2
DH#147	<3	<.2	DH#192	57	<.2	DH#237	<3	<.2
DH#148	<3	N/S	DH#193	120	<.2	DH#238	33	<.2
DH#149	<3	<.2	DH#194	<3	<.2	DH#239	N/S	N/S
DH#150	<3	<.2	DH#195	<3	<.2	DH#240	36	<.2
DH#151	21	<.2	DH#196	126	<.2	DH#241	27	<.2
DH#152	<3	<.2	DH#197	<3	<.2	DH#242	<3	<.2
DH#153	<3	<.2	DH#198	<3	<.2	DH#243	114	<.2
DH#154	<3	<.2	DH#199	114	<.2			
DH#155	<3	<.2	DH#200	<3	<.2			
DH#156	<3	<.2	DH#201	<3	<.2			
DH#157	<3	<.2	DH#202	<3	<.2			
DH#158	<3	<.2	DH#203	108	<.2			
DH#159	<3	<.2	DH#204	<3	<.2			
DH#160	<3	<.2	DH#205	<3	<.2			
DH#161	<3	<.2	DH#206	114	<.2			
DH#162	N/S	N/S	DH#207	<3	<.2			
DH#163	<3	<.2	DH#208	<3	<.2			
DH#164	<3	<.2	DH#209	<3	<.2			
DH#165	<3	<.2	DH#210	N/S	<.2			
DH#166	<3	<.2	DH#211	<3	<.2			
DH#167	<3	<.2	DH#212	<3	<.2			
DH#168	<3	<.2	DH#213	<3	<.2			
DH#169	<3	<.2	DH#214	108	<.2			
DH#170	<3	<.2	DH#215	102	<.2			
DH#171	<3	<.2	DH#216	138	<.2			
DH#172	<3	<.2	DH#217	<3	<.2			
DH#173	<3	<.2	DH#218	<3	<.2			
DH#174	<3	<.2	DH#219	<3	<.2			
DH#175	3	<.2	DH#220	<3	<.2			
DH#176	<3	<.2	DH#221	132	<.2			
DH#177	114	<.2	DH#222	N/S	N/S			
DH#178	132	<.2	DH#223	102	<.2			
DH#179	102	<.2	DH#224	<3	<.2			
DH#180	<3	<.2	DH#225	108	<.2			

*Bryndon Vantres, Inc*

*Kingbird property*

*Yeo Townships*

*PARADISE H.D.*

*on file*



41009SE0046 2.11250 YEO

900

2.11250

Mining A

Type of Survey(s) OVERburden drilling Township or Area YEO

Claim Holder(s) Bryndon Ventures, Inc. (B & B Mining (Canada) Ltd.) Prospector's Licence No. T-9658 / T-3615

Address 300-837 HOMER ST. VANCOUVER, B.C. V6B 2W2

Survey Company C. von Hessert & Associates Ltd. Date of Survey (from & to) 10 1 88 29 2 88 Total Miles of line Cut

Name and Address of Author (of Geo-Technical report) C. von Hessert, 306-45 Richmond St. West, Toronto M5H 1Z2

Credits Requested per Each Claim in Columns at right

Special Provisions	Geophysical	Days per Claim
For first survey: Enter 40 days. (This includes line cutting)	- Electromagnetic - Magnetometer	
For each additional survey using the same grid: Enter 20 days (for each)	- Other	
Man Days	Geophysical	Days per Claim
Complete reverse side and enter total(s) here	- Electromagnetic - Magnetometer - Radiometric	
Airborne Credits	Geophysical Geological Geochemical	Days per Claim
Note: Special provisions credits do not apply to Airborne Surveys.	Magnetometer Radiometric	

**RECORDED**  
JUN 20 1988  
Geological  
Geochemical

**RECEIVED**  
APR 12 1988  
PORCUPINE MINING DIVISION  
Geological  
Geochemical

**RECEIVED**  
AUG 5 1988  
Magnetometer  
Radiometric

Mining Claims Traversed (List in numerical sequence)

Mining Claim			Mining Claim		
Prefix	Number	Expend. Days Cr.	Prefix	Number	Expend. Days Cr.
P	682400	60	P	783897	60
	682406			783898	
	682407			783899	
	682408			783900	
	682409			783901	
	682410			783902	
	682411			783903	
	682412			783904	
	783882			783905	
	783883			783906	
	783884			783907	
	783885			783908	
	783886			783909	
	783887			783910	
	783888			783911	
	783889			783912	
	783890			783913	
	783891			783922	
	783892			783923	
	783893			783924	
	783894			783925	
	783895			783926	
	783896			783927	

Expenditures (excludes power stripings)

Type of Work Performed MINING LANDS SECTION  
OVERburden drilling

Performed on Claim(s) P-783886 to 899 incl, P-783904 & 905 incl, P-783908 to 913 incl, P-783923 to 25 incl, P-783927 to 32 incl.

Calculation of Expenditure Days Credits

Total Expenditures \$ 50,000 ÷ Total Days Credits 15 = 3333

Instructions  
Total Days Credits may be apportioned at the claim holder's choice. Enter number of days credits per claim selected in columns at right.

Date Apr. 17, 1988 Recorded Holder or Agent (Signature) [Signature]

For Office Use Only

Total Days Cr. Recorded 3300 Date Recorded JUNE 20 88 Mining Recorder [Signature]

Date Approved as Recorded See Record Branch Director [Signature]

R.M.

I hereby certify that I have a personal and intimate knowledge of the facts set forth in the Report of Work annexed hereto, having performed the work or witnessed same during and/or after its completion and the annexed report is true.

Name and Postal Address of Person Certifying C. von Hessert, Suite 306 45 Richmond St. West Toronto, Ont M5H 1Z2

Date Certified Apr. 17, 1988 Certified by (Signature) [Signature]

C. VON HESSERT & ASSOCIATES LTD.  
SUITE 306 - 45 RICHMOND STREET WEST  
TORONTO, ONTARIO M5H 1Z2

TELEPHONE (416) 883-8796  
FACSIMILE (416) 889-0504

RECEIVED

SEP 14 1988

MINING LANDS SECTION

February, 1988

IN ACCOUNT WITH BRYNDON VENTURES

INVOICE BVI-802-1

Kingbird overburden sampling program, Yeo Township,  
Gogama, Ontario, for the period January 10-  
February 28, 1988: A partial billing. A final  
invoice will be delivered with the report.

1. Trail and linecutting for access and control	\$6,000 ✓
2. Mobilization and demobilization	2,500
3. Snowmobile rentals	4,900 ✓
4. Food, camp and miscellaneous @ \$150 per day	7,350 ✓
5. Drill and three man crew 35 days @ \$700	24,500 ✓
6. Supervision	<u>2,000</u> ✓
Subtotal	47,250
Paid on Account	<i>paid 4/29/88</i> <u>(25,000)</u>
Amount Owing	<i>paid 2/29/88</i> \$22,250 =

Please pay \$15,000. The balance owing will be added to a  
final invoice to be delivered with the report.



CONCILIATION

*FEB 29 88*

PAID TO THE ORDER OF

*CHRIS VON HESBERT & ASSOCIATES LTD*

*22,250.00*

*Twenty Two Thousand Two Hundred and Fifty*

*Flow Through '88 - Kuybird*

THE BANK OF NOVA SCOTIA  
VANCOUVER CENTRE  
650 WEST GEORGIA STREET  
VANCOUVER, B.C. V6B 4P6

*[Signature]*  
*B. Brynner*

⑆01420⑆002⑆03731⑆17⑆ ⑆0002225000⑆

ISSUED BY THE BANK OF CANADA

RECEIVED BY THE BANK OF CANADA

*FEB 27 88*

*CHRIS VON HESBERT & ASSOCIATES LTD*

*25,000.00*

*Twenty Five Thousand Dollars*

*Flow Through '88 - Kuybird*

THE BANK OF NOVA SCOTIA  
VANCOUVER CENTRE  
650 WEST GEORGIA STREET  
VANCOUVER, B.C. V6B 4P6

*[Signature]*  
*[Signature]*

⑆01420⑆002⑆03731⑆17⑆ ⑆0002500000⑆

001101 # 8024548 # 8024548

1 MR 88 14 1  
SCOTIA BANK  
DATA CENTRE  
VANCOUVER

3 MR 88 11 3  
SCOTIA BANK  
DATA CENTRE  
TORONTO

383



001101 # 8024548 # 8024548

DEPOSITED TO  
**PAYEE**  
In THE TORONTO-DOMINION BANK  
TORONTO DOMINION CENTRE BRANCH  
85 KING ST. W. & BAY ST. P.O. BOX 1  
TORONTO, ONTARIO M5K 1A2

10202-004  
THE TORONTO-DOMINION BANK  
TORONTO DOMINION CENTRE BRANCH  
**FEB 21 1988**  
85 KING ST. W. & BAY ST.  
TORONTO, ONTARIO M5K 1A2  
10202-004

FOR  
Lynn  
Boa  
568-2095  
BOX 11502  
VANCOUVER  
V6B 4P6  
SCOTIA BANK

C. VON HESSERT & ASSOCIATES LTD.

SUITE 306 - 45 RICHMOND STREET WEST  
TORONTO, ONTARIO M5H 1Z2

TELEPHONE (416) 863-6796  
FACSIMILE (416) 869-0504

February 29, 1988

IN ACCOUNT WITH BRYNDON VENTURES, INC.      INVOICE BVI-807-2

Prepare and file report on Kingbird Property,  
C. von Hessert . . . . . \$1,000.00 ✓

Expenses incurred in behalf of Bryndon

Drafting . . . . .	401.66 ✓
Assays (Barringer) . . . . .	2523.00 ✓
Courier . . . . .	<u>10.00</u> ✓
Total Owing	\$3,934.66

1. The undersigned hereby certifies that the above is a true and correct copy of the original as shown to me.

July 28 19 58

Amount of Bill Number Liberty-4000 \$3,934.00

10 C. W. DEWEY & ASSOCIATES LTD.  
1001 - 507-2

AMOUNT PAID BY CHECK

NOT NEGOTIABLE

DETACH AND RETAIN THIS STATEMENT  
THE ATTACHED CHECK IS IN PAYMENT OF ITEMS DESCRIBED BELOW

2/58 paid for printing, postage, carrier, file # 3,934.00  
and prepare report.

(1/1)



Ontario

Ministry of  
Northern Development  
and Mines

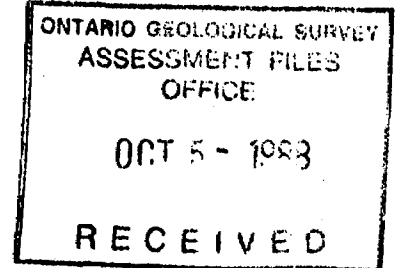
Ministère du  
Développement du Nord  
et des Mines

September 16, 1988

Your file: W8808-203

Our file: 2.11250

Mining Recorder  
Ministry of Northern Development & Mines  
60 Wilson Avenue  
Timmins, Ontario  
P4N 2S7



Dear Sir:

Re: Expenditure spent on Overburden Drillings and  
Assaying Samples submitted on Mining Claims  
P783888 et al in the Township of Yeo

The Assessment Work Credit on expenditure spent on Overburden  
Drillings and Assaying Samples has been approved as of the  
above date.

Please inform the recorded holder of these mining claims and  
so indicate on your records.

Yours sincerely,

W.R. Cowan, Manager  
Mining Lands Section  
Mines & Minerals Division

Whitney Block, Room 6610  
Queen's Park  
Toronto, Ontario  
M7A 1W3

Telephone: (416) 965-4888

RM:ma

*rm*

c.c. Bryndon Ventures Inc.  
Suite 300  
837 Homer Street  
Vancouver, B.C.  
V6B 2W2

Resident Geologist  
Timmins, Ontario

Mr. C. Von Hessert  
Suite 306  
45 Richmond Street West  
Toronto, Ontario  
M5H 1Z2

Mr. G.H. Ferguson  
Mining & Lands Commissioner  
Toronto, Ontario



Recorded Holder  
Bryndon Ventures Inc.

Township ~~XXXX~~  
Yeo

Type of survey and number of Assessment days credit per claim	Mining Claims Assessed
<b>Geophysical</b> Electromagnetic _____ days Magnetometer _____ days Radiometric _____ days Induced polarization _____ days Other _____ days Section 77 (19) See "Mining Claims Assessed" column Geological _____ days Geochemical _____ days Man days <input type="checkbox"/> Airborne <input type="checkbox"/> Special provision <input type="checkbox"/> Ground <input type="checkbox"/> <input type="checkbox"/> Credits have been reduced because of partial coverage of claims. <input type="checkbox"/> Credits have been reduced because of corrections to work dates and figures of applicant.	\$50,000.00 spent on Overburden Drilling and Assaying Samples taken from Mining Claims:  P 783888 to 899 inclusive 783904 - 905 783908 to 913 inclusive 783922 to 925 inclusive 783928 to 931 inclusive   3333.33 Days credit allowed which may be grouped in accordance with Section 76(6) of the Mining Act R.S.O. 1980.

Special credits under section 77 (16) for the following mining claims

[Empty box for special credits]

No credits have been allowed for the following mining claims

not sufficiently covered by the survey       insufficient technical data filed

[Empty box for no credits]

The Mining Recorder may reduce the above credits if necessary in order that the total number of approved assessment days recorded on each claim does not exceed the maximum allowed as follows: Geophysical - 80; Geological - 40; Geochemical - 40; Section 77(19) - 60.

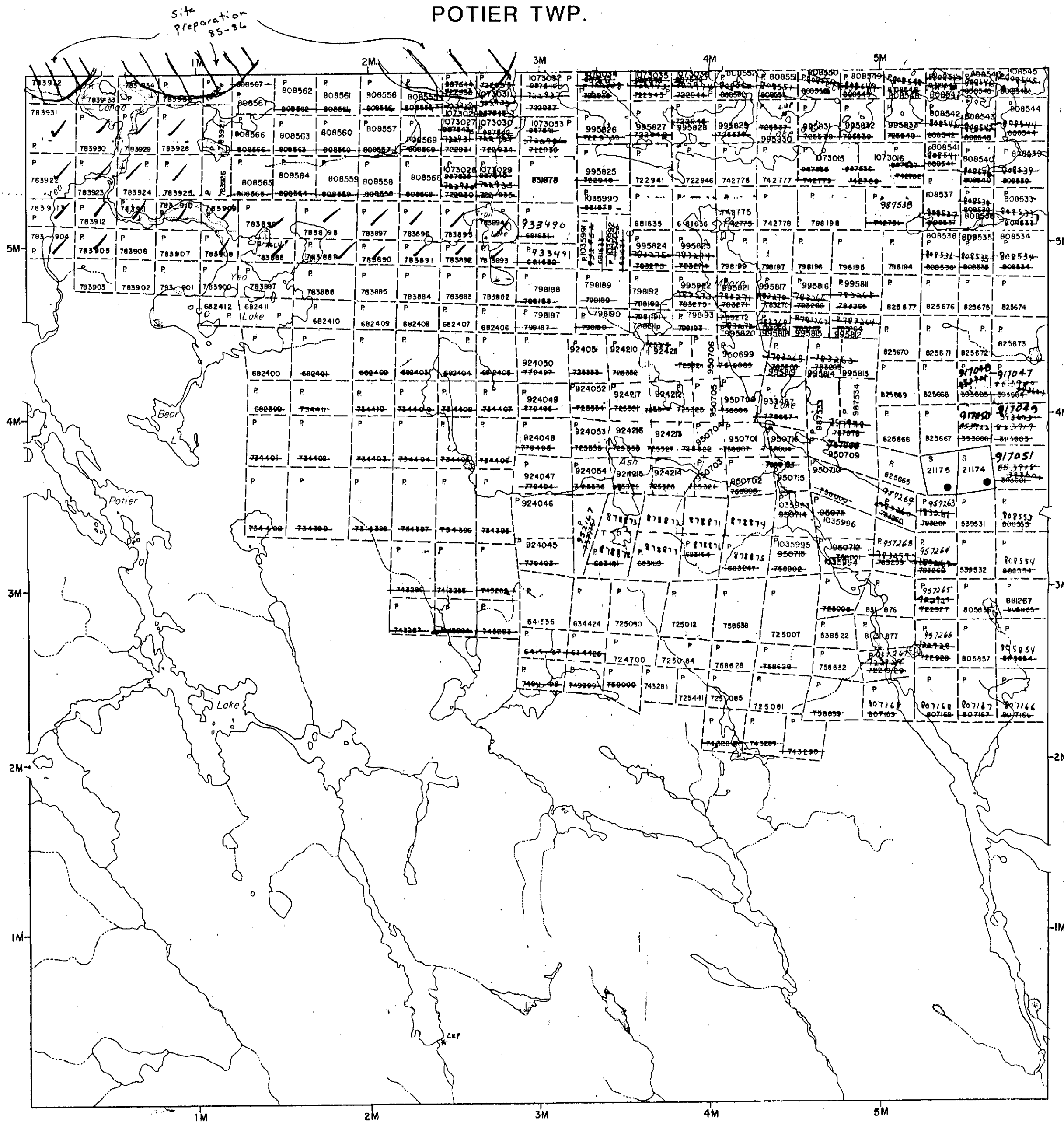
REFERENCES

AREAS WITHDRAWN FROM DISPOSITION

- M.R.O. - MINING RIGHTS ONLY
- S.R.O. - SURFACE RIGHTS ONLY
- M.+S. - MINING AND SURFACE RIGHTS

Description Order No. Date Disposition File

POTIER TWP.



SMUTS TWP.

LEGEND

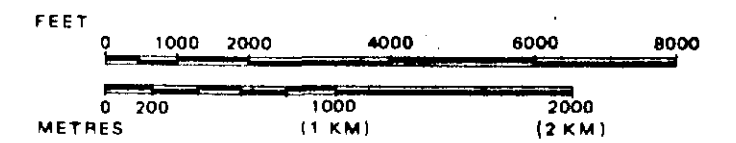
- HIGHWAY AND ROUTE No.
- OTHER ROADS
- TRAILS
- SURVEYED LINES:
  - TOWNSHIPS, BASE LINES, ETC.
  - LOTS, MINING CLAIMS, PARCELS, ETC.
- UNSURVEYED LINES:
  - LOT LINES
  - PARCEL BOUNDARY
  - MINING CLAIMS ETC.
- RAILWAY AND RIGHT OF WAY
- UTILITY LINES
- NON-PERENNIAL STREAM
- FLOODING OR FLOODING RIGHTS
- SUBDIVISION OR COMPOSITE PLAN
- RESERVATIONS
- ORIGINAL SHORELINE
- MARSH OR MUSKEG
- MINES
- TRAVERSE MONUMENT

DISPOSITION OF CROWN LANDS

TYPE OF DOCUMENT	SYMBOL
PATENT, SURFACE & MINING RIGHTS	●
" SURFACE RIGHTS ONLY	○
" MINING RIGHTS ONLY	◐
LEASE, SURFACE & MINING RIGHTS	■
" SURFACE RIGHTS ONLY	◼
" MINING RIGHTS ONLY	◻
LICENCE OF OCCUPATION	▼
ORDER-IN-COUNCIL	OC
RESERVATION	⊙
CANCELLED	⊖
SAND & GRAVEL	⊗

NOTE: MINING RIGHTS IN PARCELS PATENTED PRIOR TO MAY 6, 1913, VESTED IN ORIGINAL PATENTEE BY THE PUBLIC LANDS ACT, R.S.O. 1970, CHAP. 380, SEC. 63, SUBSEC. 1.

SCALE: 1 INCH = 40 CHAINS



TOWNSHIP

**YEO** RECEIVED  
AUG 19 1988

M.N.R. ADMINISTRATIVE DISTRICT

**GOGAMA**

MINING DIVISION

**PORCUPINE**

LAND TITLES / REGISTRY DIVISION

**SUDBURY**

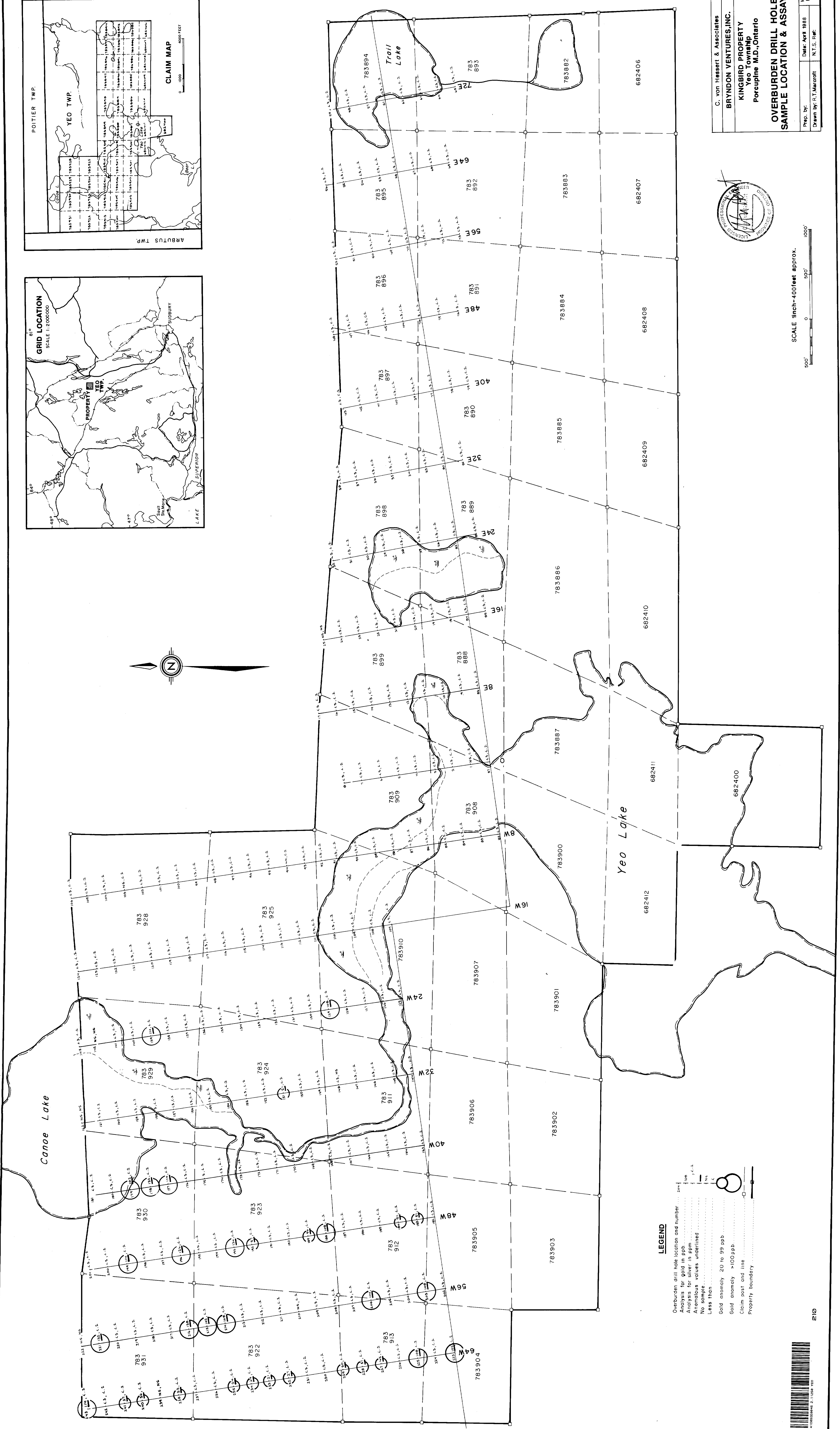
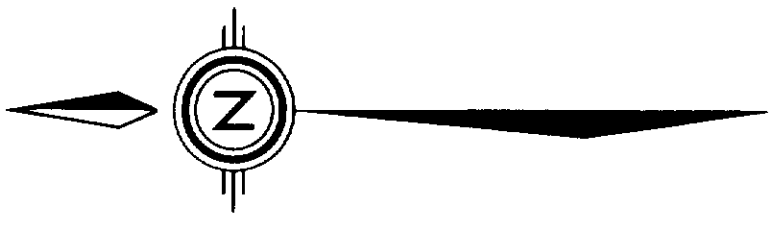
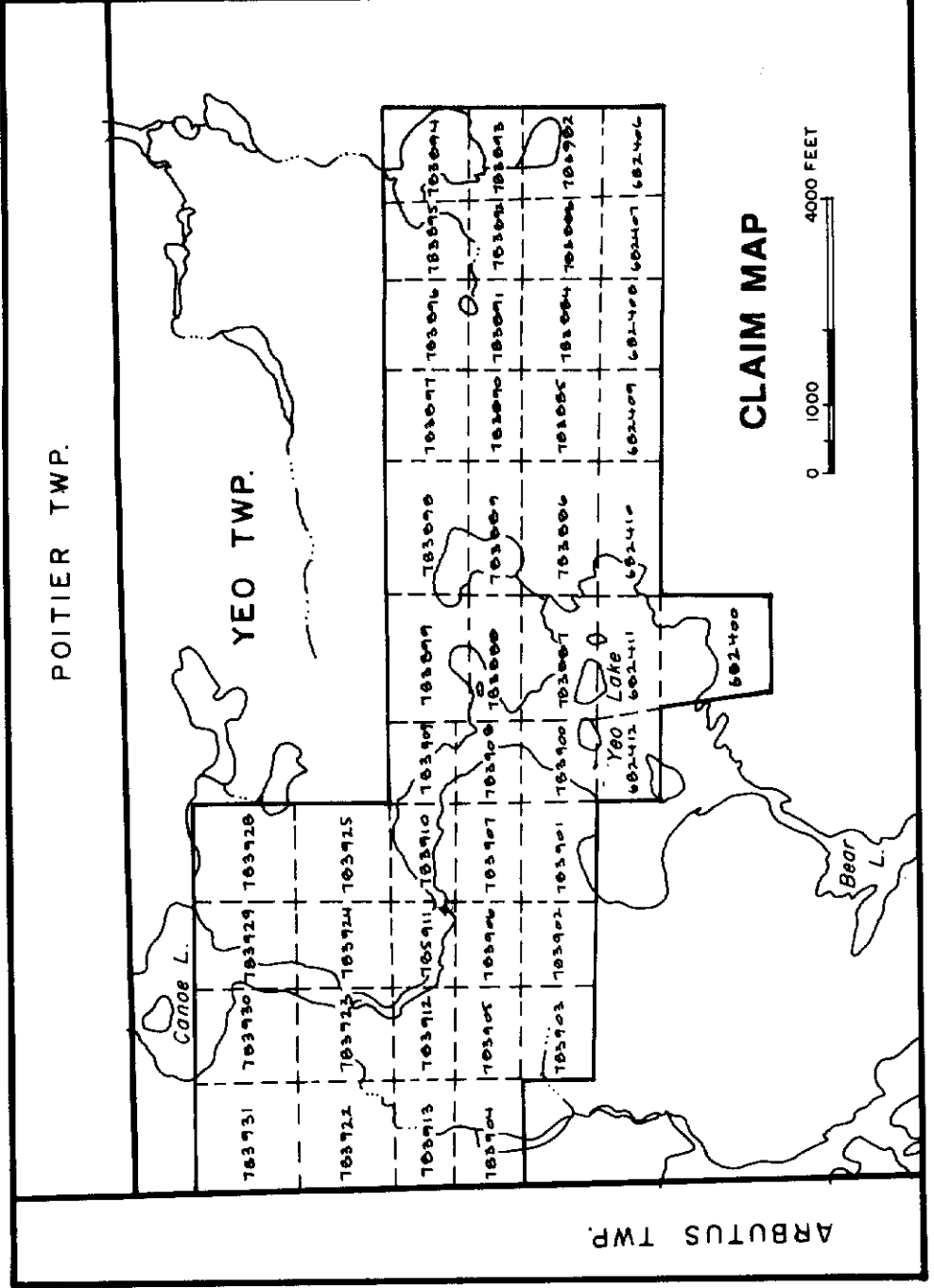
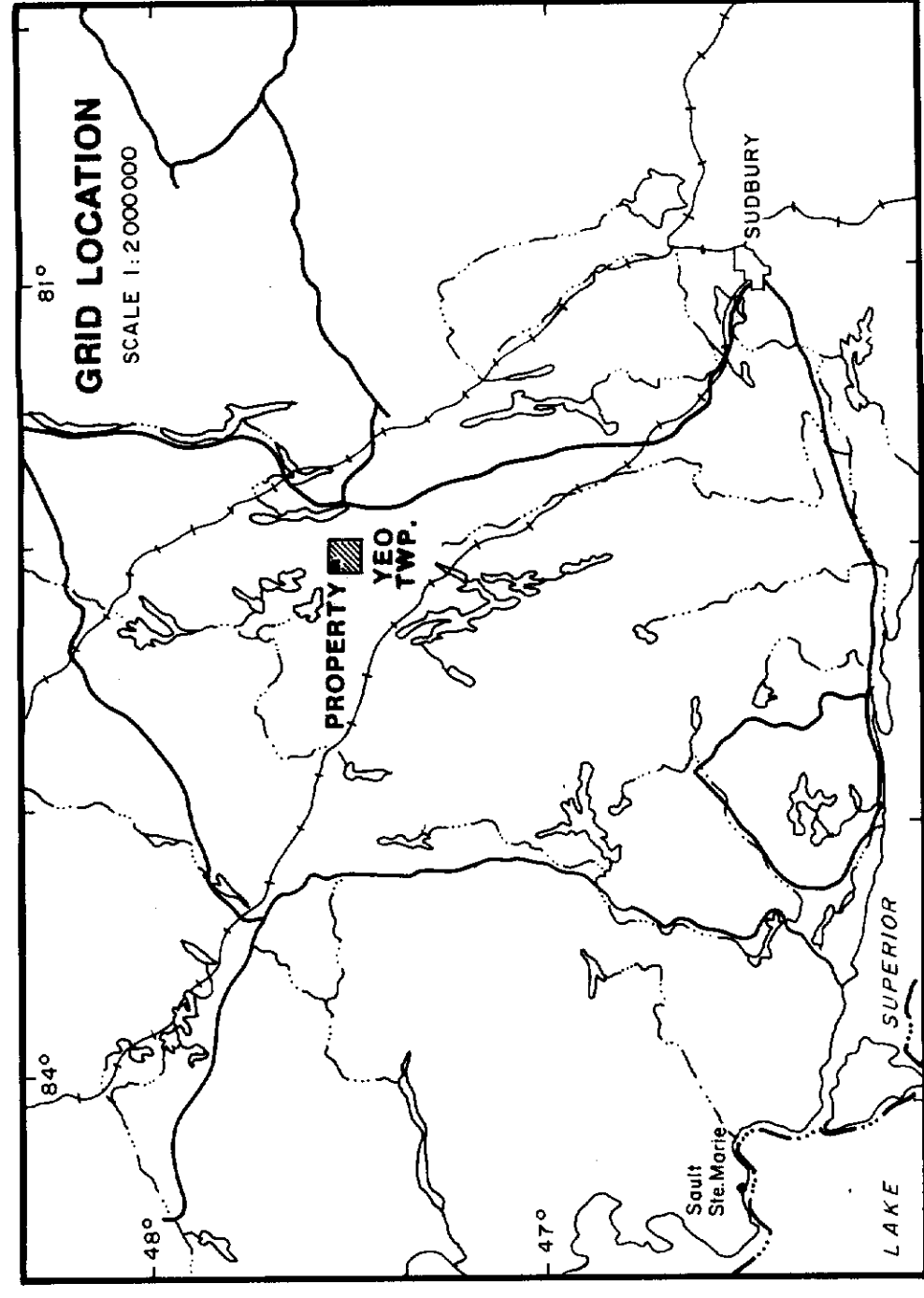
Ministry of Natural Resources  
Land Management Branch

Date OCTOBER, 1983  
Number **G-2481**

*receive checked*  
*Nov 28/85*

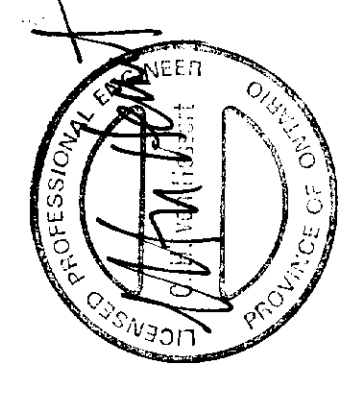


41089SE046 2.11250 YEO



**LEGEND**

- Overburden drill hole location and number
- Analysis for gold in ppb
- Analysis for silver in ppb
- Anomalous values underlined
- No sample
- Less than
- Gold anomaly 20 to 99 ppb
- Gold anomaly >100 ppb
- Claim post and line
- Property boundary



C. von Heesert & Associates  
 BRYNDON VENTURES, INC.  
 KINGBIRD PROPERTY  
 Yeo Township  
 Porcupine M.D., Ontario

**OVERBURDEN DRILL HOLE  
 SAMPLE LOCATION & ASSAYS**

Prep. by: \_\_\_\_\_ Date: April 1988  
 Drawn by: R.T. Macraff N.T.S. Ref. \_\_\_\_\_ Map No. \_\_\_\_\_

SCALE 1-inch=400feet approx.  
 500' 0 500' 1000'

