



41009SE0515 16 HUFFMAN

010

DIAMOND DRILLING

Township: Huffman

Report No: 16

WORK PERFORMED FOR: Best-ore Gold Mines Ltd.

RECORDED HOLDER: SAME AS ABOVE [x]

: OTHER []

<u>CLAIM NO.</u>	<u>HOLE NO.</u>	<u>FOOTAGE</u>	<u>DATE</u>	<u>NOTE</u>
S. 45683,45680	WI	725"	Unknown	
S. 45685,45681	Unknown	412"	Unknown	

2/1137"

NOTES:

DIAMOND DRILL RECORD

Hole No. W1 Sheet No. _____

Property Best-Ore Gold Mines Ltd.
 Location Hole collared in claim 45683
Drilled south-west into claim 45680
 Latitude _____
 Departure _____
 Bearing S 6° 30' W

Dip 56°

Total Footage 725'

Elev. Collar _____
 Datum _____
 Date Started _____
 Date Completed _____
 Drilled by Chas. Swedlund, Sudbury, Ont.
 Logged by _____

Footage		Formation	Sample Number	Sample Width	Gold Sample	Gold Sludge	Remarks
From	To						
0	8.7	Casing					
	14	Shear sed. broken core					
	25	Lost core					
	35	Lost core					
	40	Shear carbon sed					
	49	lost core					
	50	Quartz chlorite					
	87	Greywacke					
	110	"					
	116	Rusty contact. Acid Sediments					
	139	acid sediments					
	151	Rusty schist					
	175	Carbonate schist					
	207	Carbonate Schist					
	212	Conglomerate					
	240	Greywacke					
	269	Shear conglomerate					
	323	seritic schist, carb. congl. changing to greywacke					
	334	Greywacke					
	361	Greywacke, changing to conglomerate					
	400	Grey conglomerate					
	527	Grey Conglomerate					
	536	Seamy rusted shear zone					
	600	" " " " very little mineralization					
	625	Rusty iron formation					
	655	" " " " changing to cherty iron formation					
	680	Banded iron formation Sil					

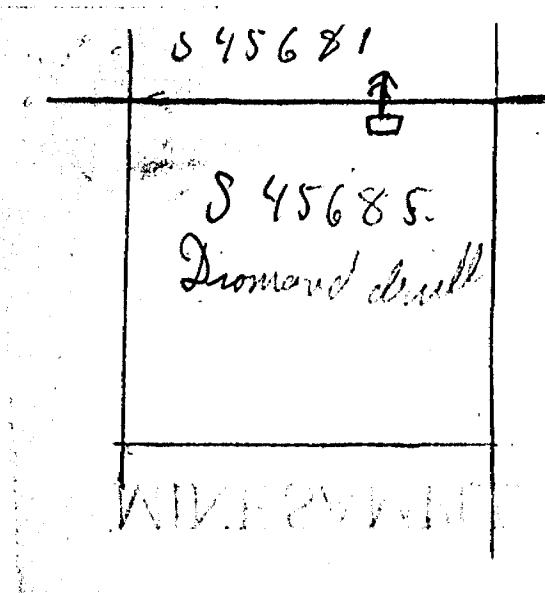
Date of Examination _____

GROUP A & B

Drilled on claim #45685 150' inside of claim #45685, drilled North into claim #45681. Depth of hole 412' at 35°.

0'	--	63'	Greenstone
63'	--	90'	Quartz Porphyry
90'	--	157'	Greenstone
157'	--	161'	Slate
161'	--	241'	Arkose
241'	--	245'	Pink Arkose
245'	--	249'	Altered Schist
249'	--	312'	Greywacke
312'	--	356'	Pink Arkose
356'	--	379'	Arkose
379'	--	412'	Conglomerate

Signed: C. Swedlund

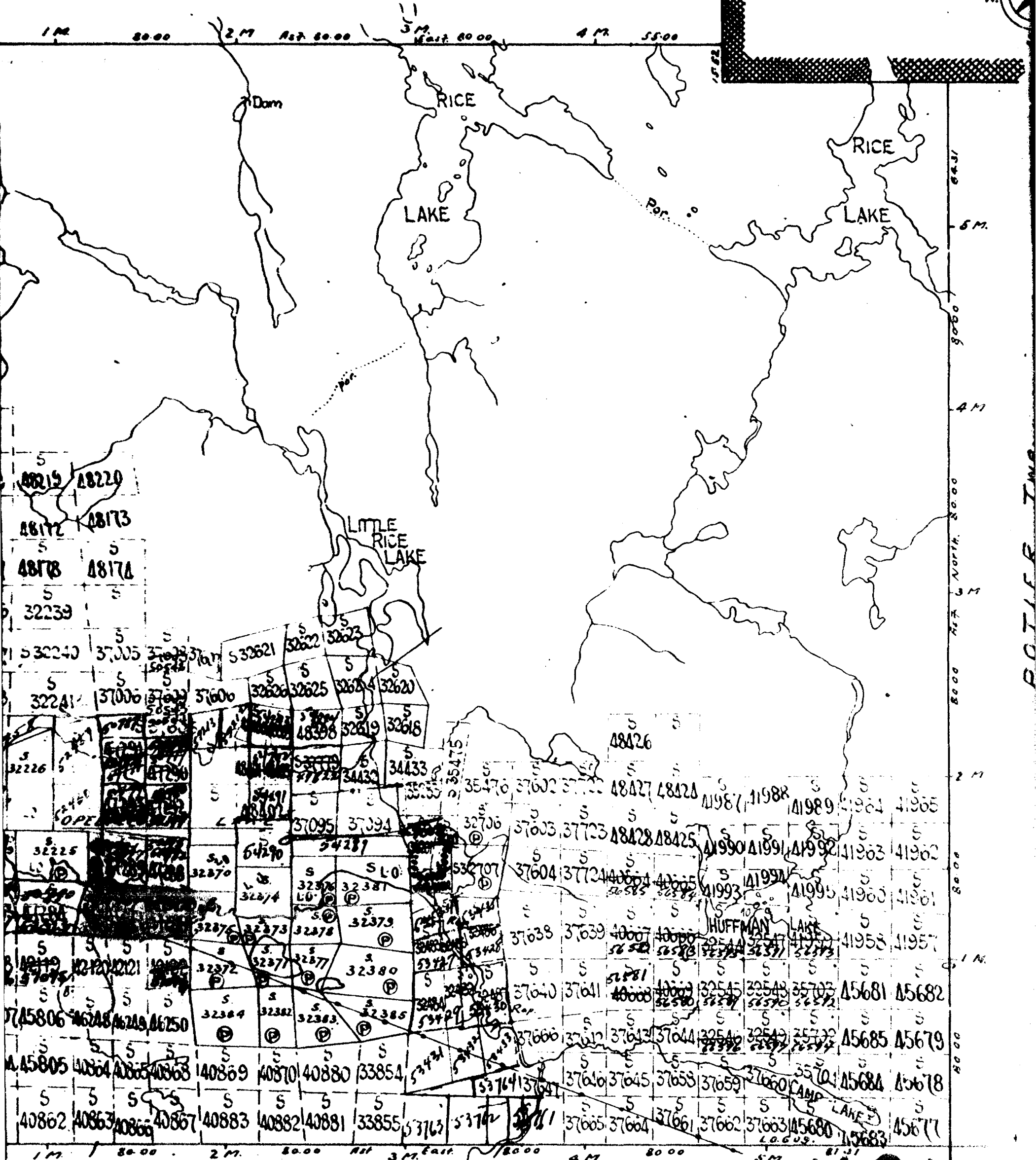


— PLAN OF —
HUFFMAN TWP.
SUDBURY MINING DIVISION.
DISTRICT OF SUDBURY.

— Scale, 40 chains to an inch. —

ERIC TWP

FRATER TWP.



ARBUTUS TWP

M940

Her O.L.S. 1920
 O.L.S. 1913.
 Johnson. 1920.
 2 A. 1932.

H.E.P.C. Trans. Line Shiningtree & Six to
 Jerome Gold Mines. R/W 99ft wide
 shown thus.
 Plan signed J. Butterfield O.L.S. 1901. File 123949.