



41069SE0520 18 OSWAY

010

DIAMOND DRILLING

TOWNSHIP: OSWAY TWP.

REPORT NO: 19

WORK PERFORMED FOR: Monte Carlo Gold Mine (Kidd Res. Ltd.)
Canadian Gold Res. (J.V)

RECORDED HOLDER: Same as Above [xx]
: Other []

<u>Claim No.</u>	<u>Hole No.</u>	<u>Footage</u>	<u>Date</u>	<u>Note</u>
682909	OS87-1	407'	Dec/87	(1)
682909	OS87-2	607'	Dec/87	(1)
652618	OS87-3	537'	Nov-Dec/87	(1)
652617	OS87-4	283'	Nov/87	(1)
652617	OS87-4A	507'	Nov/87	(1)

Notes: (1) #W8806.142, filed in Dec/88

Loc. Osway Twp. Dip collar : -45° Bearing collar : 205° Length: 407'
 Bi-Ore Prospect 400' -44° Cellar el. :
 L 1800mE, 350mN Bottom el. :

Drilled by: Johnex Core size: BQ Begun: Dec. 3/87 Ended: Dec. 4/87 Logged by: M. Alexander

Samples	Footage drilled				Geology
	From	To	Len.	Rec. %	
	0	5'			Overburden (casing)
	5'	407'			Mafic metavolcanics fine grained, green-gray green-gray moderately - well foliated at CA 35-45° 2-5% quartz veins up to 0.5cm, minor lenses <1% quartz carbonate veins up to 1cm chloritic alteration throughout variable mild carbonatization and silicificatio
19722	5'	8'	3'	2.002	5'-66' 5% grading to 0% disseminated magnetite trace - 2% vein associated py
					8'-15' weak-anfoliated, medium grained unsilicified or carbonatized section
19723	15'	18'	3'	.024	trace - 4% disseminated py, trace - 10% massive disseminated aspy
					16.5'-24' moderate-strong silicification
19724	18'	21'	3'	.058	trace - 3% disseminated py, trace-10% massive- disseminated aspy
19725	21'	24'	3'	.016	trace -3% disseminated py, trace-15% massive- disseminated aspy, 1% po
19726	24'	27'	3'	.006	trace -3% disseminated py, tr-1% aspy trace po
19727	27'	30'	3'	.002	trace -3% disseminated py, trace aspy, po
19728	30'	33'	3'	.004	trace - 2% disseminated py, trace-1% aspy, tr-po
19729	33'	36'	3'	.002	trace-1% disseminated py, trace po, aspy
19730	36'	39'	3'	2.002	trace - 1% disseminated py
19731	39'	42'	3'	.002	trace - 2% disseminated py
19732	42'	45'	3'	2.002	trace - 1% disseminated py
19733	45'	48'	3'	2.002	trace disseminated py
19734	48'	51'	3'	.002	trace - 2% disseminated py
19735	51'	54'	3'	2.002	trace - 1% disseminated py
19736	54'	57'	3'	.002	trace-1% disseminated py, aspy

D. D. Hole No. OSW-87-1

ONTARIO GEOLOGICAL SURVEY
 ASSESSMENT FILES
 OFFICE
 JUN 17 1988
 RECEIVED

D. D. HOLE No.

Loc. Dip collar : Bearing collar : Length:
 : : Cellar el. :
 : : Bottom el. :

Drilled by: Core size: Begun: Ended: Logged by:

Samples	Footage drilled				Geology
	From	To	Len.	Rec. %	
19737	57'	60'	3'	.004	trace - 2% disseminated py, trace aspy
19738	60'	63'	3'	.002	trace - 2% disseminated py
19739	63'	66'	3'	.002	trace - 1% disseminated py
19740	66'	69'	3'	.002	trace - 1% disseminated py
19741	69'	72'	3'	.002	trace - 1% disseminated py
19742	72'	75'	3'	.002	trace - 2% disseminated py, trace po
19743	75'	78'	3'	.002	trace - 2% disseminated py.
19744	78'	81'	3'	.002	trace - 1% disseminated py
19745	81'	84'	3'	.002	trace - 1% disseminated py
					81.2'-113.2' moderate-strong silicification with 10-40% quartz lenses up to 7cm and minor quartz veins up to 1cm lenses irregular and distorted in places
19746	84'	87'	3'	.002	trace - 1% disseminated py
19747	95.5'	98.5'	3'	.002	trace - 1% disseminated py
19748	102'	105'	3'	.002	trace - 1% disseminated py, po
19749	105'	108'	3'	.002	trace - 1% disseminated py, trace aspy
19750	108'	111'	3'	.002	trace - 1% disseminated py, trace aspy
19751	111'	114'	3'	.002	trace - 1% disseminated py
19752	114'	117'	3'	.002	trace - 1% disseminated py
19753	117'	120'	3'	.002	trace - 2% disseminated py
					118.4' 11cm quartz vein CA 48°
					119.2' 10cm quartz vein CA 36°
19754	120'	123'	3'	.004	trace - 1% disseminated py, trace aspy
19755	123'	126'	3'	.002	trace - 1% disseminated py, aspy, po
19756	126'	129'	3'	.002	trace - 1% disseminated py
19757	129'	132'	3'	.002	trace - 1% disseminated py, trace aspy, po
19758	132'	135'	3'	.002	trace - 1% disseminated py, trace po
19759	135'	138'	3'	.002	trace - 1% disseminated py
19760	138'	141'	3'	.002	trace - 1% disseminated py
19761	141'	144'	3'	.002	trace - 1% disseminated py

D. D. Hole No. OSW-87-1

D. D. HOLE No.

Loc. Dip collar : Bearing collar : Length:
 : : Collar cl. :
 : : Bottom cl. :

Drilled by: Core size: Begun: Ended: Logged by:

Samples	Footage drilled				Geology
	From	To	Len.	Rec. %	
					144'-151' trace disseminated py
19762	151'	154'	3'	600	trace - 1% disseminated py
					151.9' 3cm quartz calcite chlorite vein CA 41°
					153.7' 3cm quartz calcite chlorite vein CA 33°
					154'-166' trace - <1% disseminated py
19763	166'	170'	4'	600	trace - 2% disseminated py
					trace - <1% disseminated py
19764	175'	178'	3'	600	trace - 2% disseminated py
					178'-191' trace disseminated py
19765	191'	194'	3'	600	trace - 2% disseminated py
					194'-208' trace disseminated py
19766	208'	211'	3'	600	trace - 1% disseminated po
19767	211'	214'	3'	600	trace - 3% disseminated po
19768	214'	217'	3'	610	trace - 3% disseminated po
					217'-230' poorly foliated with 5-10% swirled calcite lenses
19769	217'	220'	3'	600	trace - 1% disseminated po
19770	223'	226'	3'	600	trace - 1% disseminated po
19771	226'	229'	3'	600	trace - 2% disseminated po
					230'-361.5' unfoliated to weakly foliated at CA 35-45° 1-5% calcite lenses and minor veins with minor quartz rare - disseminated bleby po often associated with calcite lenses and veinlets, rare py
19772	235'	238'	3'	600	trace - 3% disseminated calcite associated po, trace py
					236.8' 13cm 50% calcite stringers 4% po 1%py
19773	238'	241'	3'	600	trace - 1% disseminated po, trace py
19774	309'	312'	3'	600	trace - 1% disseminated py, po, trace aspy
					324.8' 1x0.2cm bleb po, minor cpy in calcite len

Loc. Osway Twp. Dip collar : -60° Bearing collar : 205° Length: 607'
 -Ore Prospect : -47° Collar el. :
 L 1800mE, 350mN Bottom el. :

Drilled by: Johnex Core size: BQ Begun: Dec. 5/87 Ended: Dec. 7/87 Logged by: M. Alexander

Samples	Footage drilled				Geology
	From	To	Len.	Rec. %	
	0'	5'			Overburden (Casing)
	5'				Mafic metavolcanics, fine grained, dark green to green gray - gray moderately - well foliated at CA 30°-40° 1-5% quartz (calcite) veins up to 0.5cm. often parallel to foliation, minor lenses chloritic alteration throughout core variable mild-moderate carbonatization minor silicified sections
					5'-67' 1-5% disseminated magnetite
					5'-8.2' moderate - strong silicification
19777	5'	8'	3'	.002	trace - 5% disseminated py, trace aspy, po
19778	8'	11'	3'	.002	trace - 2% disseminated py
					9.5'-19' very weakly foliated-unfoliated fine - medium grain, uncarbonatized or silicified section
19779	20'	23'	3'	.002	trace - 3% disseminated py, trace as py
					21'-37' variable mild-moderate silicification with minor strongly silicified sections
19780	23'	26'	3'	.010	trace - 3% disseminated py, trace-10% disseminated- massive aspy, trace po
19781	26'	29'	3'	.002	trace - 2% disseminated py, trace po
19782	29'	32'	3'	.002	trace - 4% disseminated py, trace - 1% aspy
19783	32'	35'	3'	.012	trace - 4% disseminated py, trace - 2% aspy trace po
19784	35'	38'	3'	.024	trace - 4% disseminated py, trace - 2% aspy
19785	38'	41'	3'	.002	trace - 1% disseminated py
					41'-58' rare-trace disseminated py
					42.5'-44.6' medium grained unfoliated section
19786	58'	61'	3'	.004	trace - 1% disseminated py
					58.6' 3cm quartz vein+lens D. D. Hole No. OSW-87-2 CA 40°

ONTARIO GEOLOGICAL SURVEY
 ASSESSMENT FILES
 OFFICE
 JUN 17 1988
 RECEIVED

D. D. HOLE No.

Loc. Dip collar : Bearing collar : Length:
 : : Cellar el. :
 : : Bottom el. :

Drilled by: Core size: Begun: Ended: Logged by:

Samples	Footage drilled				Geology
	From	To	Len.	Rec. %	
					61'-64' rare disseminated py
19787	64'	67'	3'	.004	trace - 4% disseminated py
					64.5'-98' moderate - strong foliation at CA 20°-45°, mild-moderate silicification and carbonatization with 3-10% quartz veins
19788	67'	70'	3'	.002	trace - 1% disseminated + vein filling py
					67.5'-70.3' very strong silicification 70'-75' rare - trace disseminated py
19789	75'	78'	3'	.002	trace - 1% disseminated py
					78'-91' rare disseminated py 80.8' possible ground water fault CA 63°
19790	91'	94'	3'	L.002	trace - 2% disseminated py
					91.2'-93.1' strongly carbonatized with possible trace fuchsite in strongest foliated section
19791	94'	97'	3'	L.002	trace - 2% disseminated py, trace aspy?
19792	97'	100'	3'	L.002	trace - 2% disseminated py
19793	100'	103'	3'	L.002	trace - 1% disseminated py
					102.2'-118' weakly foliated fine-medium grain with 0-3% disseminated magnetite are rare disseminated py
19794	112'	115'	3'	.002	trace - <1% disseminated py, cpy
19795	115'	118'	3'	.004	trace - 1% disseminated py
					118'-156' moderately-well foliated at CA 10°-40° with 0-3% disseminated magnetite
19796	118'	121'	3'	L.002	trace - 1% disseminated py
19797	121'	124'	3'	L.002	trace - 2% disseminated py
19798	124'	127'	3'	L.002	trace - 2% disseminated py
19799	127'	130'	3'	L.002	trace - 1% disseminated py
19800	130'	133'	3'	L.002	trace - 1% disseminated py

D. D. HOLE No.

Loc. Dip collar : Bearing collar : Length:
 : : Cellar el. :
 : : Bottom el. :

Drilled by: Core size: Begun: Ended: Logged by:

Samples	Footage drilled				Geology
	From	To	Len.	Rec. %	
19810	312'	315'	3'	.014	trace - 5% disseminated aspy, trace-5% po
19811	315'	318'	3'	.012	trace - 10% disseminated aspy, trace-3% po trace py
					316.7' 10cm quartz vein CA 27°-60°
19812	318'	321'	3'	.008	trace - 5% disseminated aspy, trace-3% po
19813	321'	324'	3'	.004	trace-3% disseminated po, trace-1% aspy
19814	324'	327'	3'	L-002	trace - 1% disseminated po, trace aspy 326'-357' minor silicification with 2-20% quartz lenses and veins up to 2.5cm
19815	327'	330'	3'	L-001	trace - 1% disseminated po
19816	330'	333'	3'	L-002	trace - 1% disseminated po, py
19817	333'	336'	3'	L-002	trace - 2% disseminated po, trace - 1% aspy trace py
19818	336'	339'	3'	L-002	trace - 1% disseminated py, po
19819	339'	342'	3'	L-002	trace - 1% disseminated py, po, trace cpy
19820	342'	345'	3'	L-002	trace - 1% disseminated py, po, aspy
19821	345'	348'	3'	L-002	trace - 1% disseminated py, po, aspy, cpy. 348'-351' rare disseminated py, po
19822	351'	354'	3'	L-002	trace - 2% disseminated po, py trace-1% aspy
19823	354'	357'	3'	L-002	trace - 2% disseminated po, py, trace - 1% aspy 357'-431' moderate-strong silicification and carbonatization with 5-15% quartz carbonate veins and lenses up to 5cm
19824	357'	360'	3'	.006	trace - 2% disseminated po, trace aspy
19825	360'	363'	3'	L-002	trace - 5% disseminated aspy, trace - 2% po
19826	363'	366'	3'	.006	trace - 5% disseminated aspy, trace - 1% po
19827	366'	369'	3'	.02	trace - 5% disseminated po, trace - 3% aspy trace py, cpy
19828	369'	372'	3'	.013	trace - 5% disseminated po, trace - 5% aspy trace - 1% py
19829	372'	375'	3'	.006	2-10% disseminated-massive aspy, trace - 2% po, trace py

D. D. Hole No.

D. D. HOLE No.

Loc. Dip collar : Bearing collar : Length:
 : : :
 : : :
 : : :
 : : :
 : : :

Drilled by: Core size: Begun: Ended: Logged by:

Samples	Footage drilled				Geology
	From	To	Len.	Rec.	
19830	375'	378'	3'	2.002	trace - 3% disseminated aspy, trace - 2% py, po 375.9'-379.3' bull quartz vein with 2-4% inclusions of wallrock with aspy CA 44°+27°
19831	378'	381'	3'	.004	trace - 10% disseminated aspy, trace po, py
19832	381'	384'	3'	.01	trace - 3% disseminated aspy, trace - 1% po, py
19833	384'	387'	3'	.004	trace - 1% disseminated aspy, po, trace py, cpy
19834	387'	390'	3'	2.002	trace disseminated aspy, po, cpy
19835	390'	393'	3'	2.002	trace - 1% disseminated aspy
19836	393'	396'	3'	2.002	trace disseminated aspy, po
19837	396'	399'	3'	2.002	trace - 1% disseminated po 399'-403' rare disseminated po
19838	403'	406'	3'	.002	trace - 1% disseminated po
19839	406'	409'	3'	.006	trace - 3% disseminated aspy, trace py
19840	409'	412'	3'	.004	trace - 2% disseminated aspy, trace po
19841	412'	415'	3'	.008	trace - 2% disseminated aspy, trace -2% po, py
19842	415'	418'	3'	.038	2-15% disseminated aspy, trace - 1% py, po
19843	418'	421'	3'	.037	5-20% disseminated aspy 419.2' 4cm quartz vein CA 25°
19844	421'	424'	3'	.008	trace - 5% disseminated aspy, trace - 1% po, py 423.6' 3.5cm quartz vein CA 8°
19845	424'	427'	3'	2.002	trace - 2% disseminated po, trace py, aspy
19846	427'	430'	3'	2.002	trace - 1% disseminated po, py
19847	430'	433'	3'	.004	trace - 1% disseminated po 431'-489.2' mild silicification, carbonatization and weak-moderate foliation with 1-5% quartz carbonate veinlets up to 1cm
19848	433'	436'	3'	.016	trace - 1% disseminated po, trace py
19849	436'	439'	3'	2.002	trace - 1% disseminated po, trace py
19850	439'	442'	3'	2.002	trace - 1% disseminated po, trace py
19851	442'	445'	3'	2.002	trace - 1% disseminated po, trace py

D. D. Hole No.

D. D. HOLE No.

Loc. Dip collar : Bearing collar : Length:
 : :
 : : Cellar el. :
 : : Bottom el. :

Drilled by: Core size: Begun: Ended: Logged by:

Samples	Footage drilled				Geology
	From	To	Len.	Rec. %	
19852	445'	448'	3'	2.002	trace - 1% disseminated po, trace py
19853	448'	451'	3'	2.002	trace - 1% disseminated po, trace py
19854	451'	454'	3'	2.002	trace - 1% disseminated po, trace py
19855	454'	457'	3'	2.002	trace - 1% disseminated py, po
					457'-470' rare-trace disseminated po, py
19856	470'	473'	3'	2.002	trace - 1% disseminated po, trace py
					473'-489' rare-trace disseminated po, py
					489.2'-515' mild-moderate silicification and carbonatization, minor strong sections
19857	489'	492'	3'	.002	trace - 2% disseminated po, trace -1% aspy,py
19858	492'	495'	3'	2.002	trace - 1% disseminated po, trace py
19859	495'	498'	3'	2.002	trace - 1% disseminated po, trace py
19860	498'	501'	3'	2.002	trace - 1% disseminated po, trace py
19861	501'	504'	3'	2.002	trace - 1% disseminated po, trace py
19862	504'	507'	3'	.014	trace - 3% disseminated po, trace - 2% aspy trace py
19863	507'	510'	3'	.010	trace - 3% disseminated po, trace - 2% aspy trace py
19864	510'	513'	3'	.002	trace - 1% disseminated po, py
19865	513'	516'	3'	2.002	trace -1% disseminated po, py
					515'-553' moderately carbonatized with 2-5% fine carbonate veinlets, well foliated at CA 35-50° rare-trace disseminated po, py often in carbonate veinlets
					553'-583' well carbonatized with minor silicified sections well foliated at CA 35-55° with 2-10% parallel carbonate veinlets
19866	553'	556'	3'	2.002	trace - 1% disseminated po
19867	556'	559'	3'	2.002	trace - 1% disseminated po
19868	559'	562'	3'	2.002	trace - 1% disseminated po

D. D. Hole No.

Loc. ...Osway...Twp..... Dip collar :-45°..... Bearing collar :205°..... Length:537'.....
 Skye Prospect 530' -33° Cellar el. :
 L1080mW, 2+50mS Bottom el. :

Drilled by: Johnex Core size: BQ Begun: Nov. 28/87 Ended: Dec 1/87 Logged by: M. Alexander

Samples	Footage drilled				Geology
	From	To	Len.	Rec. %	
	0'	37'			Overburden (Casing)
	37'	288.9'			Intermediate-felsic meta volcanics (lappilli tuff) fine very fine grained, gray-slightly greenish gray finely bedded and well foliated parallel to bedding foliation/bedding CA 35-45° 2-5% 0.1-0.3cm carbonate, minor quartz veinlets parallel to foliation rare-trace fine disseminated py, minor po
19870	62.5'	66'	3.5'	<.002	trace disseminated py, po + trace galena and sphalerite in two 0.1cm veinlets
19871	66'	69.5'	3.5'	<.002	trace -1% disseminated py, trace po sphalerite 72'-74.5' moderate silicification
19872	75'	78'	3'	<.002	trace - <1% disseminated py trace sphalerite
19873	78'	81'	3'	<.002	trace - <1% disseminated py trace sphalerite
19874	81'	84'	3'	<.002	trace - <1% disseminated py trace cpy
19875	84'	87'	3'	<.002	trace - <1% disseminated py trace sphalerite
19876	87'	90'	3'	<.002	trace - <1% disseminated py trace sphalerite
19877	90'	93'	3'	.002	trace - <1% disseminated py trace sphalerite
19878	93'	96'	3'	.002	trace - 1% disseminated py, trace sphalerite galena. 94.2'-96.5' quartz vein with 20% wallrock inclusions CA ≈40° 96.5'-113' weak silicification with 3-7% quartz veins and lenses up to 5cm
19879	107'	110'	3'	<.002	trace - 1% disseminated py, sphalerite
19880	110'	113'	3'	<.002	trace - 1% disseminated py, sphalerite
19881	113'	116'	3'	<.002	trace - 1% disseminated py, sphalerite
19882	116'	119'	3'	<.002	trace - 1% disseminated py, sphalerite 119'-165' rare disseminated sphalerite
19883	147'	150'	3'	<.002	trace - 1% disseminated po, py

ONTARIO GEOLOGICAL SURVEY
 ASSESSMENT FILES
 OFFICE
 JUN 17 1988
 RECEIVED

D. D. HOLE No.

Loc. Dip collar : Bearing collar : Length:
 : : Cellar el. :
 : : Bottom el. :

Drilled by: Core size: Begun: Ended: Logged by:

Samples	Footage drilled				Geology
	From	To	Len.	Rec. %	
19884	150'	153'	3'	0.002	trace - 1% disseminated po, py trace aspy
19885	153'	156'	3'	0.002	trace - 1% disseminated py, po
19886	156'	159'	3'	0.002	trace - 1% disseminated py
19887	159'	162'	3'	0.002	trace - 1% disseminated py, sphalerite trace galena
19888	162'	165'	3'	0.002	trace - 1% disseminated sphalerite 179.7'-185.5' well developed banded bedding CA 57°
19889	205'	208'	3'	0.002	trace - 1% disseminated po, py 206.3' 25cm quartz carbonate vein CA 51° 1%py
19890	208'	211'	3'	0.002	trace - <1% disseminated po, py sphalerite 219.2'-219.7' chilled diabase dykelet CA 57° 219.7'-267.5' weak-moderate silicification with 2-5% quartz veins and lenses up to 2cm
19891	239'	242'	3'	0.002	trace - 1% disseminated py, sphalerite
19892	248'	251'	3'	0.002	trace - 1% disseminated py, sphalerite
19893	251'	254'	3'	0.008	trace - 3% disseminated aspy, trace - 1% py 251.7'-253' sheared quartz vein, gouge at 252' CA 30°
19894	254'	257'	3'	0.002	trace - 1% disseminated py
19895	258.5'	261.5'	3'	0.002	trace - 1% disseminated py, sphalerite
19896	261.5'	264.5'	3'	0.004	trace - 3% disseminated py, trace - 1% sphalerite
19897	264.5'	267.5'	3'	0.004	trace - 2% disseminated py, trace - 1% po 267.5'-268.2' fault gouge CA 61° 267.5' 0.1cm graphite coating on fault contact 268.2'-275' ground fractured core silicified carbonatized shear zone CA 56° 275'-289.2' moderately silicified
19898	275'	278'	3'	0.002	trace - 1% disseminated py, po
19899	278'	281'	3'	0.002	trace - 3% disseminated po, trace - 1% py
19900	281'	284'	3'	0.002	trace - 1% disseminated py, po

D. D. Hole No. OSW-87-3

D. D. HOLE No.

Loc. Dip collar : Bearing collar : Length:
 : : Cellar el. :
 : : Bottom el. :

Drilled by: Core size: Begun: Ended: Logged by:

Samples	Footage drilled				Geology
	From	To	Len.	Rec. %	
19901	284'	287'	3'	0.02	trace disseminated py, po
19902	287'	289'	2'	0.02	trace -1% disseminated py, trace po
					288.9' faint sharp contact CA 61°
	288.9'	537'			mafic metavolcanics (flow)
					fine-coarse grained, green+dark green
					<<1% carbonate veins and veinlets up to 2cm
					chloritic alteration through section
					rare disseminated py
					288.9'-307' moderate grading to weak
					foliation CA 40°-60° fine-medium grained
					312.5'-320' coarse grained with <1-3%
					blue quartz eyes.
					313.7'-315.5' diabase dykelet CA 69°
19903	316'	320'	4'	0.02	trace -1% disseminated clots py, po
					320'-333' medium grained faintly foliated
					0% grading to 3% blue quartz
19904	328'	332'	4'	0.02	trace - 1% disseminated py, po
					333'-347' moderate-strong foliation
					with <1-5% blue quartz
19905	337'	340'	3'	0.02	trace - 3% disseminated py
19906	340'	343'	3'	0.13	trace - 4% disseminated py
					347'-387' coarse grained with ≈5%
					whitish blue quartz and 20-30% elongate
					subhedral hornblende laths subophitic texture
					354.7' 3cm epidote calcite vein CA47°, 2% py
					387'-426' coarse grading to medium
					grained with faint grading to weak
					foliation at CA 52°, with quartz and hornblende
					as 347'-387'

D. D. HOLE No.

Loc. Dip collar : Bearing collar : Length:
 : :
 : : Cellar el. :
 : : Bottom el. :

Drilled by: Core size: Begun: Ended: Logged by:

Samples	Footage drilled				Geology
	From	To	Len.	Rec. %	
					426'-486.8' weak-moderate foliation with weak-moderate carbonatization fine-medium grained with moderate-strong chloritic alteration. <1-1% quartz carbonate veins up to 0.5cm
					435'-442' trace disseminated py
					442'-463' weak-moderate silicification with 1-5% quartz carbonate ghost like veins
19907	442'	445'	3'	.004	trace - 3% disseminated py
19908	445'	448'	3'	.002	trace - 3% disseminated py
19909	448'	451'	3'	.002	trace - 2% disseminated py
19910	451'	454'	3'	.002	trace - 1% disseminated py
19911	454'	457'	3'	.002	trace - 1% disseminated py
19912	457'	460'	3'	.002	trace - 2% disseminated py, trace - 1% po
					460'-463' trace disseminated py
19913	478'	481'	3'	.002	trace - 1% disseminated py
19914	481'	484'	3'	.002	trace - 2% disseminated py
					482.3'-483.1' weak silicification
19915	484'	487'	3'	.002	trace - 1% disseminated py
					486.8'-537' medium grained with 20-60% altered stubby hornblende laths, 2-5% patchy and vein like epidote altered zones often as halos around quartz veins
					523.6'-531.2' moderate-strong shearing foliation at CA 72° weak carbonatization and minor silicification trace disseminated py
19916	527'	530'	3'	.002	trace - 1% disseminated py
	537'				E.O.H. OSW-87-3

[Handwritten Signature]

D. D. Hole No.

CHECKED DEC 2 3 1987

Loc. Osway Twp Dip collar : -45° Bearing collar : Length: 283'

Kye Prospect : : Cellar el. :

L840mW, 325mS : : Bottom el. :

Drilled by: Johnex Core size: BQ Begun: Nov. 24/87 Ended: Nov. 25/87 Logged by: M. Alexander

Samples	Footage drilled				Geology
	From	To	Len.	Rec. %	
	0'	9'			Overburden (casing)
					5.5'-9' overburden boulder
					9'-9.7' ground core and surface pebbles
	9.7'	108.1'			Mafic metavolcanics (flow)
					medium-coarse grained, green and dark green
					20%-40% altered stubby pyroxene laths
					moderate chloritic alteration
					<1% quartz carbonate (feldspar) veins up to
					0.5cm. rare disseminated py. often associated
					with veins. 13.6'-17.3' strong chloritic
					alteration
					23'-23.5' ground surface pebbles up to 5cm
					23.5'-30.7' wavy-spiraled core up to 0.4cm
					less than standard diameter
					39.1'-39.8' ground core and surface pebbles up
					to 5cm. 60.1' 2cm quartz carbonate vein CA 57°
					weak shearing around vein
19917	68.5'	71.5'	3'	100%	trace - 1% disseminated py in moderate-strong
					shear foliation CA 29°
					71.5'-76.7' weak-moderate shearing foliation
					CA 29°. 76.7'-84.2' moderate-strong shearing
					foliation CA 20-35° mildly carbonatized
					rare localized py up to 1%
					84.2'-88.5' weak foliation and carbonatization
					88.5'-91.2' strong foliation CA 34°
					moderate carbonatization minor silicification
	108.1'	113.5'			Diabase (dyke) fine grained, dark green
					gray very faint weakly chilled contacts
					CA 55°+65° strongly carbonatized, trace
					disseminated py

ONTARIO GEOLOGICAL SURVEY
ASSESSMENT FILES
OFFICE
JUN 17 1988
RECEIVED

Loc. Osway Twp. Dip collar : -45° Bearing collar : Length: 507'
 Skye Prospect 500' : -46° Collar el. :
 L840mW, 325mS Bottom el. :

Drilled by: Johnex Core size: BQ Begun: Nov 25/87 Ended: Nov 27/87 Logged by: M. Alexander

Samples	Footage drilled				Geology
	From	To	Len.	Rec. %	
	0'	15'			Overburden (casing)
	15'	108.1'			Mafic metavolcanic (flow) medium-coarse grained, green and dark green 20-40% altered stubby pyroxene laths moderate chloritic alteration. <1% quartz carbonate feldspar veins up to 0.5cm. rare disseminated py often associated with veins
					16.4'-21.7' strong chloritic alteration
19923	45'	48.5'	3.5'	100%	trace - 1% py, po in quartz lenses.
					68.5'-72.3' moderate shearing foliation CA 26°
19924	68.5'	72'	3.5'	100%	trace - 1% disseminated py
					72.3'-77' weak foliation
					77'-84' moderate-strong shearing
					foliation CA 20°-30° moderate carbonatization
19925	80.5'	83.5'	3'	100%	trace - 1% disseminated py
					84'-89.8' weak faint foliation
					89.8'-92.1' moderate-strong shearing
					carbonatization and minor silicification
					foliation CA 55°
	108.1'	112.5'			Diabase (dyke) fine grained, dark greenish gray faintly chilled contacts CA's 62°+67° strongly carbonatized, trace disseminated py
	112.5'	287'			Mafic metavolcanics (flow) as 15'-108.1'
					122.4'-122.7' carbonatized diabase dykelet CA 55°
					126.3'-126.8' carbonatized diabase dykelet CA 51°
					126.8'-132.2' weak foliation
					132.2'-147.3' moderate-strong shearing foliation CA 30° strong carbonatization

ONTARIO GEOLOGICAL SURVEY
 ASSESSMENT FILES
 OFFICE
 JUN 17 1988
 RECEIVED

D. D. HOLE No.

Loc. Dip collar : Bearing collar : Length:
 : : :
 : : :
 : : :
 : : :

Drilled by: Core size: Begun: Ended: Logged by:

Samples	Footage drilled				Geology
	From	To	Len.	Rec. %	
19926	144.5'	147.5'	3'	C-001	trace - 1% disseminated py 147.3'-152.6' carbonatized diabase dykelet CA 70°
19927	152.5'	155.5'	3'	C-002	trace - 3% disseminated py 152.6'-153.2' quartz vein CA 70° 2% py 153.2'-156.3' strong carbonatization and shearing foliation CA 51°
19928	155.5'	158.5'	3'	C-002	trace - 1% disseminated py 156.3'-168.6' weak foliation 168.6'-170.2' strong foliation carbonatization 170.2'-175.3' weak foliation 175.3'-179.6' strong shearing foliation CA 27° strong carbonatization 179.6'-184.3' carbonatized diabase dyke CA 27° 184.3'-186' strong-moderate shearing foliation CA 38° strong-moderate carbonatization 186'-235.3' faint-weak foliation CA 47° 235.3'-287' moderate-strong shearing foliation CA 23° moderate-strong carbonatization minor associated silicification 140'-145.1' moderate-strong crenulation axial plane CA 69° 146.4'-147.2' quartz chlorite vein CA 50° 257'-276.6' 5-15% ghost like carbonate veinlets parallel to foliation 287' mafic metavolcanic (flow) medium grained, green weakly-moderately carbonatized weakly foliated CA 40° <1-1% ghosty carbonate veins up to 1.5cm minor associated quartz

D. D. HOLE No.

Dip collar : Bearing collar : Length:
 : :
 : : Cellar el. :
 : : Bottom el. :

Drilled by: Core size: Begun: Ended: Logged by:

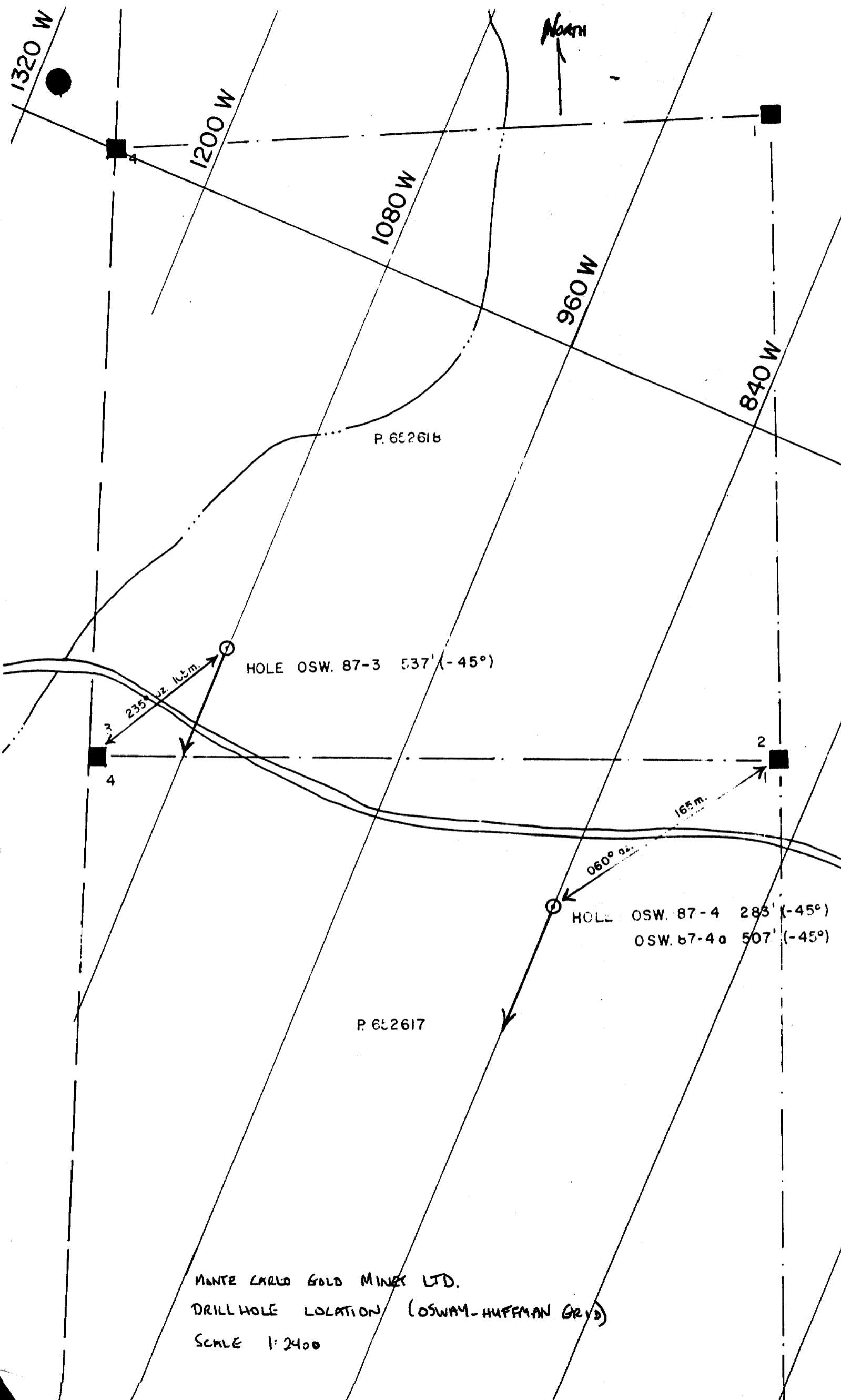
Samples	Footage drilled				Geology
	From	To	Len.	Rec. %	
					trace - 2% blue quartz eyes
					301.6'-302.9' moderately foliated carbonatized
19929	310.5'	313.5'	3'	L-002	trace - 1% disseminated py
					311.7' 3.5cm carbonate vein CA 72°
					316.5'-321.5' moderate-strong shearing
					foliation CA , carbonatized
19930	317'	320'	3'	L-002	trace - 2% disseminated py
					347.9' sharp contact CA 43°
	347.9'	397.6'			Mafic metavolcanic (flow) (dyke?)
					fine-medium grained dark green-dark gray
					near upper contact where slightly chilled
					mildly carbonatized with 1%
					carbonate veins up to 0.5cm
					mild chloritic alteration
					very weakly foliated at CA 49°
					slightly diabassic in appearance
					rare-trace disseminated py
					347.9'-352' unchloritized - chloritized
19931	352'	355'	3'	L-002	trace - 1% disseminated py
19932	355'	358'	3'	L-002	trace - 1% disseminated py
					355.2' 2cm carbonate vein CA 41°
					393.3' 2.5cm quartz carbonate vein CA 39°
					397.6' sharp contact CA 35°
	397.6'				Intermediate-Mafic metavolcanics flow
					very fine grained, light green very minor
					brown streaks dark brown green near upper
					contact strongly carbonatized with chloritic
					alteration 1-5% minor 15% fine carbonate
					veinlets up to 0.2cm, 0.5cm where highly
					concentrated parallel to foliation

D. D. HOLE No.

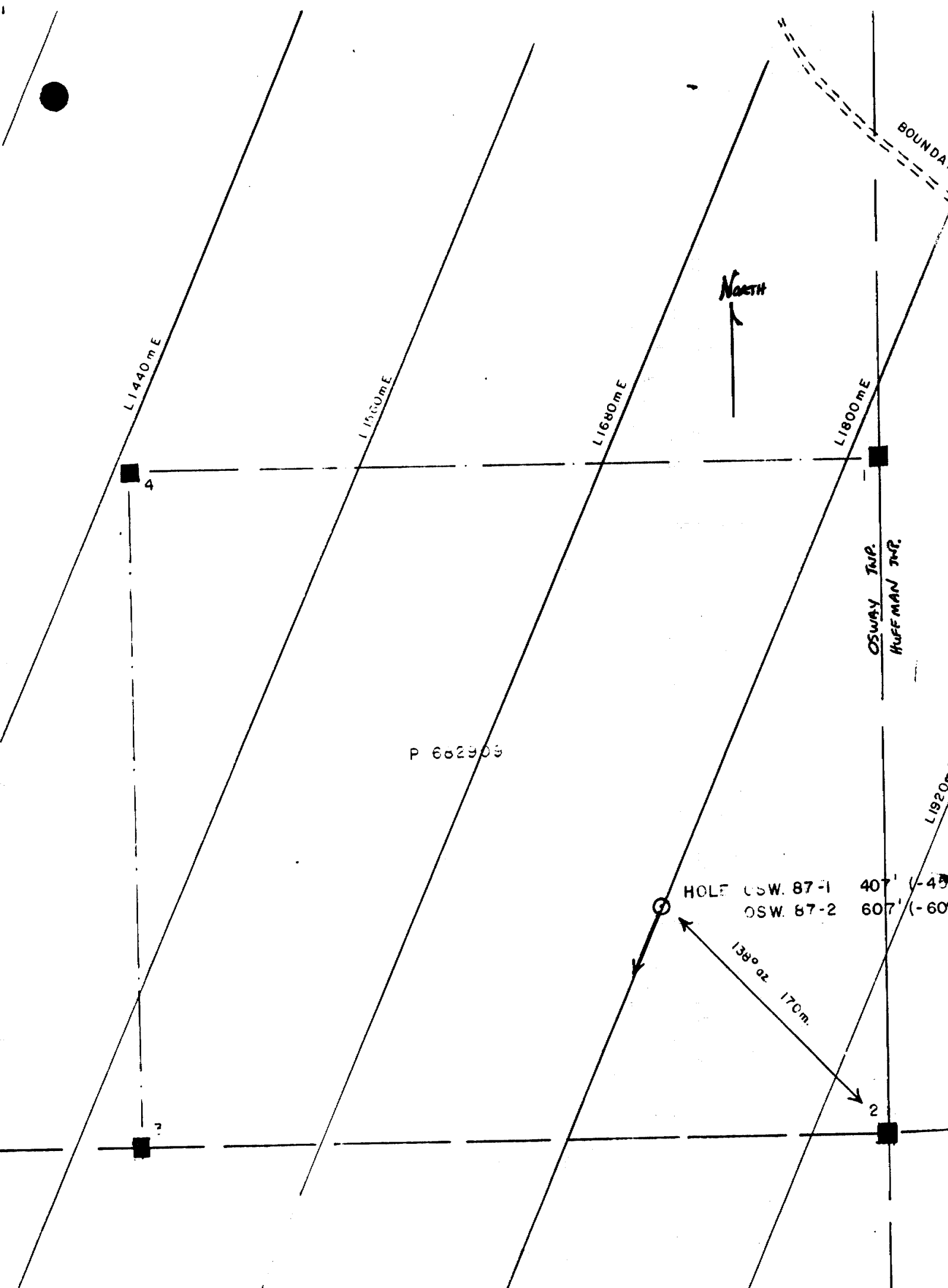
Dip collar : Bearing collar : Length:
 : : :
 : : :
 Cellar el. :
 Bottom el. :

Drilled by: Core size: Begun: Ended: Logged by:

Samples	Footage drilled				Geology
	From	To	Len.	Rec.	
				%	minor brown streaks of fine biotite
					weak-moderate foliation at CA 41°
19933	397.5'	400'	2.5'	C.002	trace - 1% disseminated py
					398.5'-399.5' faint brecciation (flow top?)
19934	400'	403'	3'	C.002	trace - 1% disseminated py trace -1% veinlet filling po
19935	403'	406'	3'	C.002	trace - 1% disseminated py
19936	406'	409'	3'	C.002	trace - 1% disseminated py, trace po
19937	409'	412'	3'	C.002	trace - 1% disseminated py, trace po
19938	412'	415'	3'	C.002	trace - 1% disseminated py, po
19939	415'	418'	3'	C.002	trace - 1% disseminated po, trace py
19940	418'	421'	3'	C.002	trace - 1% disseminated po, py
19941	421'	424'	3'	C.002	trace - 2% disseminated po, trace py
19942	424'	427'	3'	C.002	trace - 1% disseminated po, trace py
19943	427'	430'	3'	C.002	trace disseminated po, py
19944	430'	433'	3'	C.002	trace - 1% disseminated po, trace py
					431.5' 9cm quartz vein CA 46°
19945	433'	436'	3'	C.002	trace - 1% disseminated po
19946	436'	439'	3'	C.002	trace - 1% disseminated po
19947	439'	442'	3'	C.002	trace - 2% disseminated po, trace py
19948	442'	445'	3'	C.002	trace - 1% disseminated po
19949	445'	448'	3'	C.002	trace - 1% disseminated po
19950	448'	451'	3'	C.002	trace - 1% disseminated po
132301	451'	454'	3'	C.002	trace - 1% disseminated po
132302	454'	457'	3'	C.002	trace - 1% disseminated po
132303	457'	460'	3'	C.002	trace disseminated po
132304	460'	463'	3'	C.002	trace - 1% disseminated po
132305	463'	466'	3'	C.002	trace - 2% disseminated po
132306	466'	469'	3'	C.002	trace - 1% disseminated po
132307	469'	472'	3'	C.002	trace - 1% disseminated po, trace py



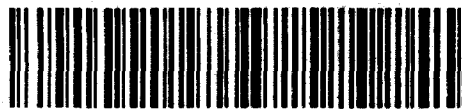
Monte Carlo Gold Mines Ltd.
DRILL HOLE LOCATION (OSWAY-HUFFMAN GRID)
SCALE 1:2400



MONTE CARLO GOLD MINES LTD.
 DRILLHOLE LOCATION (OSWAY-HUFFMAN GRID)

Scale 1:2400

ONTARIO GEOLOGICAL SURVEY
 ASSESSMENT FILES
 OFFICE
 JUN 17 1988
 RECEIVED



W8806-142

Name and Postal Address of Recorded Holder
MONTE CARLO GOLD MINER (KIDD RES LTD), CANADIAN GOLD RES (JV) (T1108)/T935
20 ADVANCE BLVD BRAMPTON ONT L6T 4R7

Summary of Work Performance and Distribution of Credits

Total Work Days claimed 2341 1680 DAYS	Mining Claim			Mining Claim			Mining Claim		
	Prefix	Number	Work Days Cr.	Prefix	Number	Work Days Cr.	Prefix	Number	Work Days Cr.
for Performance of the following work. (Check one only) <input type="checkbox"/> Manual Work <input type="checkbox"/> Shaft Sinking Drifting or other Lateral Work. <input type="checkbox"/> Compressed Air, other Power driven or mechanical equip. <input type="checkbox"/> Power Stripping <input checked="" type="checkbox"/> Diamond or other Core drilling <input type="checkbox"/> Land Survey	P	683153	60		682905	60		682913	60
		683154	60		682906	60		682914	60
		683155	60		682907	60		652614	60
		683156	60		682908	60		652615	60
		682901	60		682909	60		652616	60
		682902	60		682910	60		652617	60
		682903	60		682911	60		652618	60
		682904	60		682912	60		652619	60

All the work was performed on Mining Claim(s): **682909, 652617, 652618**

Required Information eg: type of equipment, Names, Addresses, etc. (See Table Below)

DIAMOND DRILLING BY
 JOHNEK DRILLING
 ARCHER CR. BRAMPTON, ONT.
 LONGYEAR 38 - SKID MOUNTED
 2341' Ba CORE.

Excess Work Credits
 $234 - 1680 = 661$ days

POHOCURINE MINING DIVISION
RECEIVED
 JAN 5 1988
 12:00 NOON

ONTARIO GEOLOGICAL SURVEY
 ASSESSMENT FILES OFFICE
 JUN 17 1988
RECEIVED

RECORDED
 JAN 05 1988

Date of Report: **JAN 4/88** Recorded Holder or Agent (Signature): *[Signature]*

Certification Verifying Report of Work

I hereby certify that I have a personal and intimate knowledge of the facts set forth in the Report of Work annexed hereto, having performed the work or witnessed same during and/or after its completion and the annexed report is true.

Name and Postal Address of Person Certifying
NEIL NDAX, BLUE FALLOW MINES LTD
20 ADVANCE BLVD BRAMPTON ONT L6T 4R7

Date Certified: **JAN 4/88** Certified by (Signature): *[Signature]*

Table of Information/Attachments Required by the Mining Recorder

Type of Work	Specific information per type	Other information (Common to 2 or more types)	Attachments
Manual Work	Nil	Names and addresses of men who performed manual work/operated equipment, together with dates and hours of employment.	Work Sketch: these are required to show the location and extent of work in relation to the nearest claim post.
Shaft Sinking, Drifting or other Lateral Work			
Compressed air, other power driven or mechanical equip.	Type of equipment	Names and addresses of owner or operator together with dates when drilling/stripping done.	Work Sketch (as above) in duplicate
Power Stripping	Type of equipment and amount expended. Note: Proof of actual cost must be submitted within 30 days of recording.		
Diamond or other core drilling	Signed core log showing; footage, diameter of core, number and angles of holes.		
Land Survey	Name and address of Ontario land surveyor.	Nil	Nil

NUMBER (CLAIM)

WORK DAYS CR.

CLAIM #

WORK DAYS CR.

652 620
652 621
652 622
652 623

~~60~~
~~60~~
~~60~~
~~60~~

720 983
720 984
720 985
720 986
720 987

~~40~~
~~40~~
~~40~~
~~40~~
~~40~~

933 445
933 446
933 447
933 448
933 449
933 450
933 451
933 452

~~20~~
~~20~~
~~20~~
~~20~~
~~20~~
~~20~~
~~20~~
~~20~~

720 988

740 966

~~40~~

/

TOTAL

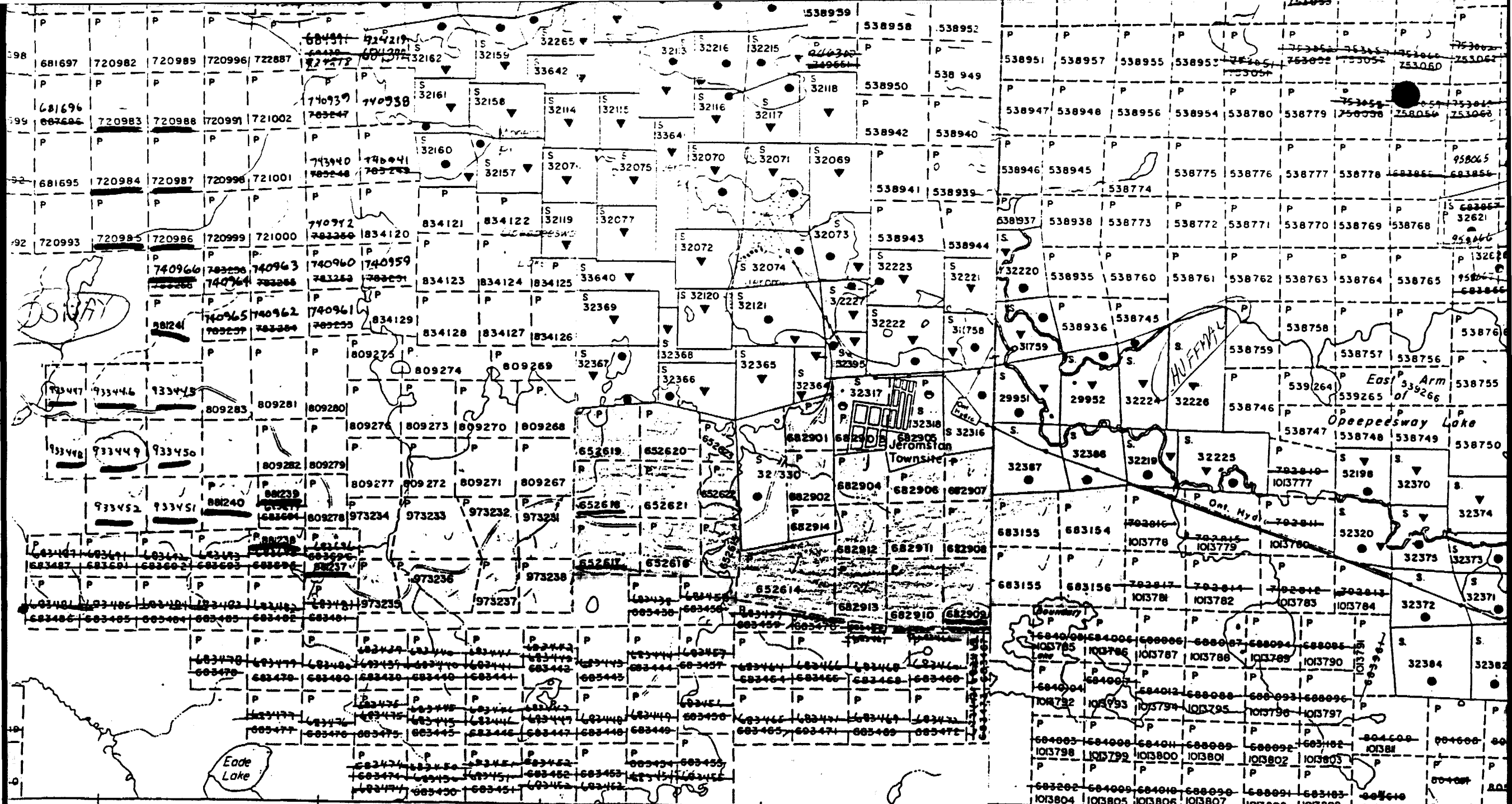
~~2341~~ DAYS CR.
1650

973 231
973 232
973 233
973 234
973 235
973 236
973 237
973 238

~~20~~
~~20~~
~~20~~
~~20~~
~~20~~
~~20~~
~~20~~
~~20~~

881 237
881 238
881 239
881 240
881 241

~~20~~
~~20~~
~~20~~
~~20~~
~~20~~



FINGAL TWP.

OSWAY HUFFMAN

1M.

2M.