



41009SE0522 10 OSWAY

010

Diamond Drilling

Township of OSWAY

Report No: 10

Work performed by: Martin Burton

Claim No	Hole No	Footage	Date	Note
S.120772	1	375'	May/64	(1)
	2	350'	June/64	
	3	370'	July/64	
	4	285'	Aug/64	
	5	265'	Aug/64	
	6	301'	Aug/64	
	A	500'	June/66	
S.120771	C	78'	June/66	(2)
	B	514'	Sept/68	

$$\begin{array}{r} 30 \ 38 \\ \hline 4 \ 2 \end{array}$$

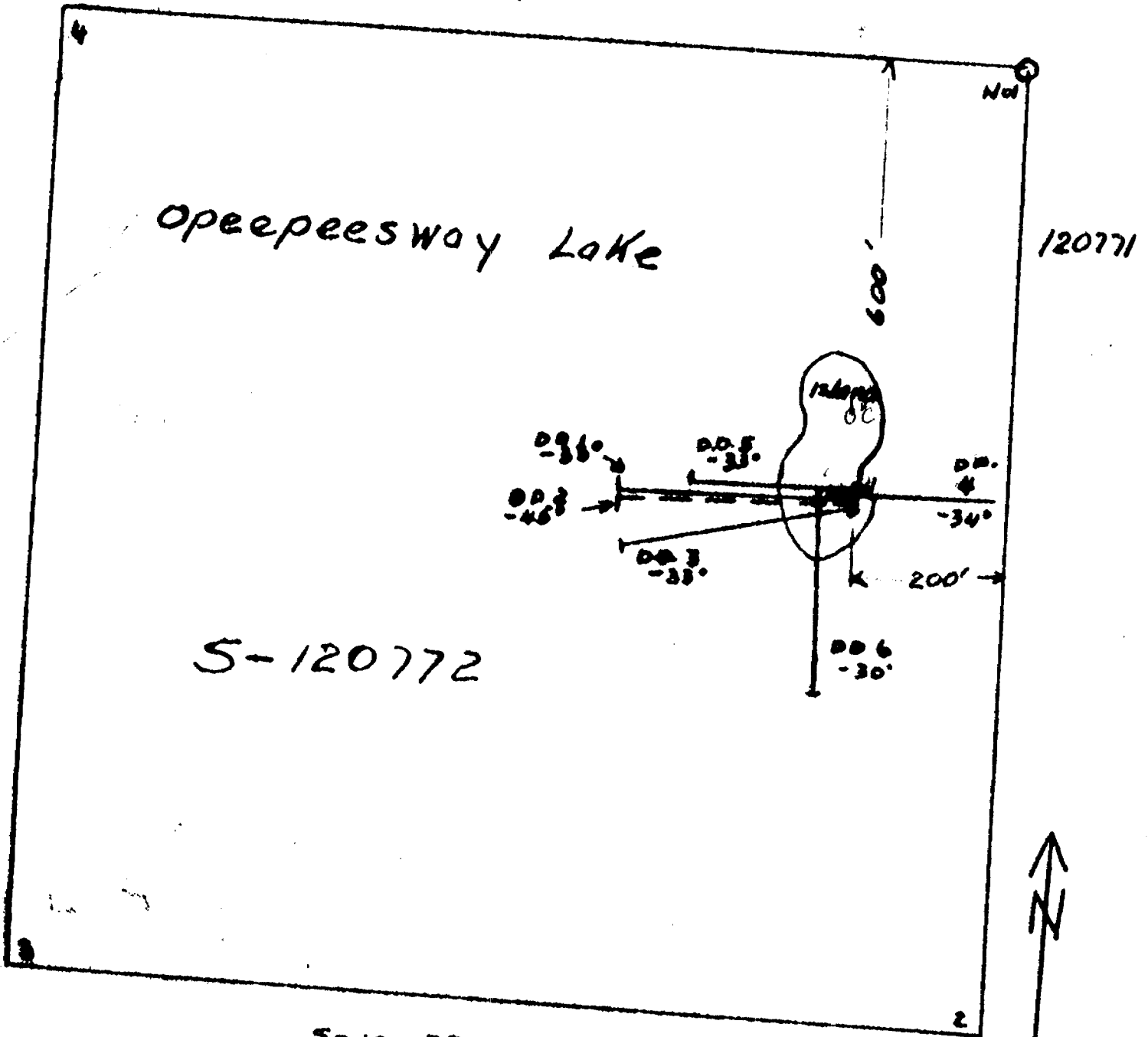
*account for in marginal notes*

Notes:

(1) location only - no logs

(2) 155/69

S 120776

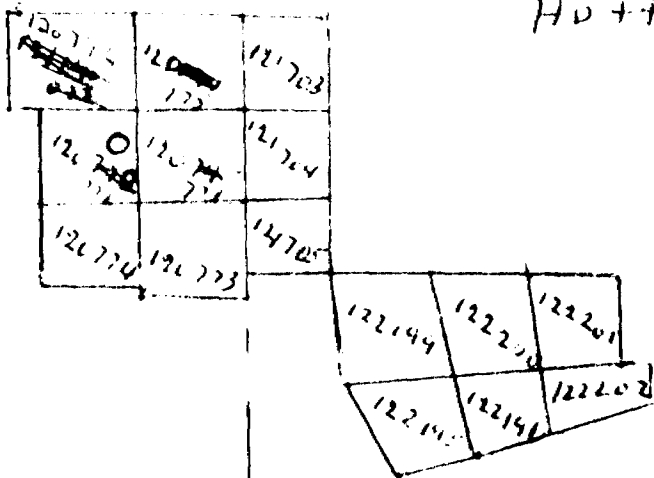


S-120774

SECTION SHOWING LOCATION OF DRILL HOLES  
 BY 1, 2, 3, 4, 5 and 6  
 Located on Claim S-120778, Oway Township  
 For assessment work on claims S120771 to 776 incl  
 S 120705 to 708 incl, 122195 -196, and 122199 to -202 incl.  
 May 19th to Sept 11, 1966

150000

Hottel man TWP



1" = 40 ch.



210  
188  

---

22

148  
132  

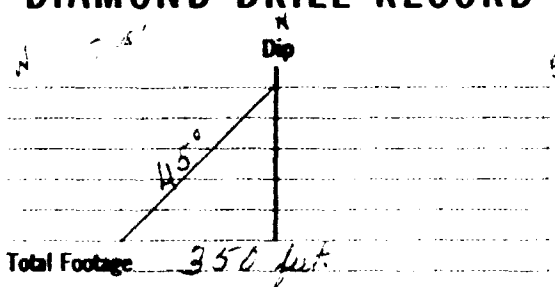
---

16

# DIAMOND DRILL RECORD

Hole No. 2 Sheet No. 1

Property M. Burton  
 Location On Island, Drexelway Lake - Liberty Twp.  
Claim # - 120772 - Approximately 700 ft. West  
of #1 Post + 600 ft. South of North Line.  
 Latitude \_\_\_\_\_  
 Departure \_\_\_\_\_  
 Bearing West



Elev. Collar \_\_\_\_\_  
 Datum \_\_\_\_\_  
 Date Started June 14, 1964  
 Date Completed June 28, 1964  
 Drilled by A. Burton  
 Logged by M. Burton

Footage		Formation	Sample Number	Sample Footage	Sample Width	Gold Sample	Gold Sludge	Remarks
From	To							
0	5'	Casing						
5'	101'6"	Bedrock Porphyry						
101'6"	105'	" " slightly mineralized						
105'	140'	" " to Sediment Contact						
140'	170'	Blocky Conglomerate Sediments						
170'	171'	" Sediments, Mineralized with Hematite + Sulphides						
170'	275'	" " " " " "						
275'	277'	" " " " " "						
277'	280'	" + Conglomerate Sediments						
280'	282'	" " Sulphide mineralization						
282'	350'	" " " "						
		End of Hole						

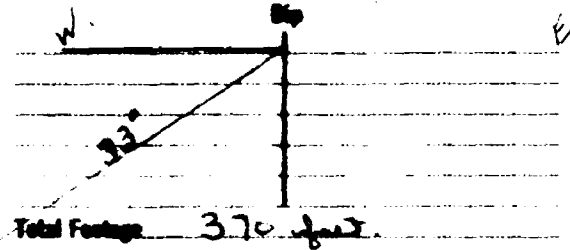
Date of Examination \_\_\_\_\_

M. Burton

# DIAMOND DRILL RECORD

Hole No. 3. Sheet No. 1.

Property M. Burton.  
 Location On Island Cooperstown Lake, Albany Twp.  
claim of 1878 approximately 200 ft west  
of #1 post - 600 ft south of North line.  
 Latitude \_\_\_\_\_  
 Departure \_\_\_\_\_  
 Bearing South 80° West.



Elev. Collar \_\_\_\_\_  
 Datum \_\_\_\_\_  
 Date Started July 5 / 64  
 Date Completed Aug 4 / 64  
 Drilled by A. Burton  
 Logged by M. Burton

Footage		Formation	Sample Number	Sample Footage	Sample Width	Gold Sample	Gold Sludge	Remarks
From	To							
0	5'	Casing						
5'	110'	Zaldapan Porphyry						
110'	113 1/2'	" with hematite - sulphides						
113 1/2'	281 1/2'	" "						
281 1/2'	282' 9"	" " Mineralized, Contact with bediments.						
282' 9"	285'	Oakase + Conglomerate bediments.						
285'	289 1/2'	" + Quartz - Mineralized						
289 1/2'	315'	" + Conglomerate bediments.						
315'	326'	" " " Mineralized						
326'	326'	" " " - hematite						
		End of Hole.						

Date of Examination Aug. 4 / 64

M. Burton

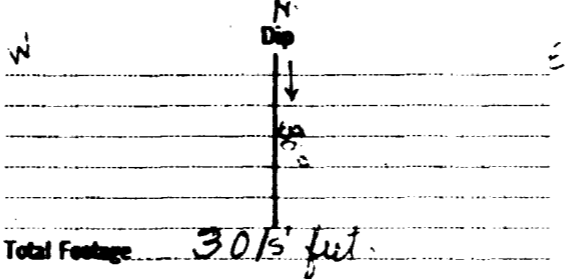




# DIAMOND DRILL RECORD

Hole No. 6 Sheet No. 1

Property M. Burton.  
 Location On Island, Opepeesway Lake,  
Ozway Township, Labrador S-0720774  
Approximately 1/2 mi West of No. 1 Post,  
 Latitude And 600 ft South of North Line.  
 Departure \_\_\_\_\_  
 Bearing South



Elev. Collar \_\_\_\_\_  
 Datum \_\_\_\_\_  
 Date Started Aug 30/64  
 Date Completed Sept. 11/64  
 Drilled by M. Burton  
 Logged by M. Burton

Footage		Formation	Sample Number	Sample Footage	Sample Width	Gold Sample	Gold Sludge	Remarks
From	To							
0	5'	Casing						
5	20	Seldspar Porphyry						
20	25	" " Sulphide Mineralization						
25	50	" " Somewhat Broken						
30	55	" " Sulphide Mineralization						
55	60' 10"	" " "						
60' 10"	64' 2"	" " Hematite + Sulphide						
64' 2"	67'	" " Somewhat broken up						
67'	70'	" " FINE Sulphide Mineralization						
70'	76' 9"	" " to contact with Sediments						
76' 9"	79' 3"	Quartz + Conglomerate Sediments mineralized						
79' 3"	86'	" " "						
86'	95'	" " Malachite mineralization						
95'	102'	" " Sediments						
102'	110'	" " Sulphide Mineralization						
110'	136'	" " Sediments						
136'	138' 1"	" " Sulphide Mineralization						
138' 1"	361'	" " + Quartzite Sediments						
		with some iron sulphides here + trace but of no consequence to End of Hole.						

Date of Examination Sept. 11/64

M. Burton



# DIAMOND DRILL RECORD

Hole No. A      Sheet No. 1

Property M. BURTON  
 Location Claim S-120772  
about 0 paces from lake  
Quarry Top  
 Latitude \_\_\_\_\_  
 Departure \_\_\_\_\_  
 Bearing North

-33° Dip

Total Footage 500

Elev. Collar \_\_\_\_\_  
 Datum \_\_\_\_\_  
 Date Started June 20 1966  
 Date Completed July 10 1966  
 Drilled by M. Burton  
 Logged by M. Burton

Footage		Formation	Sample Number	Sample Footage	Sample Width	Gold Sample	Gold Sludge	Remarks
From	To							
0	25	Daply. micaceous with pyrite						
25	50	Daply. micaceous, contact with bed						
50	145	Pat. micaceous mineralization						
145	150	Pat. slight mineralization						
150	152	cut off						
152	163	Pat. some shaly some mineralization						
163	170	Pat.						
170	175	some shaly with slight mineralization						
175	200	Pat. with inclusion of black quartz mineralization						
200	225	Pat. with mineralization						
225	260	Pat. some mineralization						
260	265	with mineralization quite heavy rock						
265	275	Pat. some mineralization						
275	300	Pat. slight mineralization						
300	305	Pat.						
305	315	Pat. slight mineralization						
315	400	Pat. with some mineralization						
400	420	Pat. with some mineralization						
420	450	Pat. with some mineralization						
450	475	Pat. with some mineralization						
475	500	Pat. with some mineralization						
500		End of Hole						

JUL 10 1966  
 AUG 5 1966  
 AUG 15 1966  
 AUG 25 1966  
 SEP 5 1966  
 SEP 15 1966  
 SEP 25 1966  
 OCT 5 1966  
 OCT 15 1966  
 OCT 25 1966  
 NOV 5 1966  
 NOV 15 1966  
 NOV 25 1966  
 DEC 5 1966  
 DEC 15 1966  
 DEC 25 1966

July 10/66

M. Burton

OSWAY TWP.

S. 120776

OPEN PASSESWAY LAKE

S. 120772



S. 120771

S. 120774

1" = 200'

Sketch showing location of Dill Hole A.  
 located on claim S. 120772 Osway TWP  
 for assessment work on claims S. 120771 to  
 776 incl. S. 120703 to 705 incl. 122195-196  
 and 122199 to 202 incl.

June 20th to July 10 1966

S-120771

OSWESBURY LAKE

S-120771

S-121704

S-120771

SUDBURY  
MINING DIV.  
RECEIVED  
NOV 28 1968  
AM 7 8 9 10 11 12 P.M. 1 2 3 4 5 6



S-120773

OSWAY TWP.

Location of drill hole B.



# DIAMOND DRILL RECORD

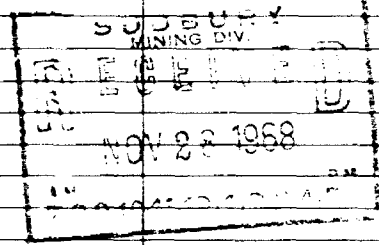
Hole No. B Sheet No. 1

Property M BURTON  
 Location CHAIN S-120771  
OSWAY TWP  
85' EAST FROM SHORE LINE  
 Elevation                       
 Azimuth                       
 Direction WEST

-33<sup>00</sup>  
 Total Footage 514

Elev. Collar                       
 Datum                       
 Date Started Sept 5/68  
 Date Completed 20/68  
 Drilled by                       
 Logged by M Burton

Footage		Formation	Sample Number	Sample Footage	Sample Width	Gold Sample	Gold Sludge	Remarks
From	To							
0	22	<del>Coarse</del>						
22	80	<del>Reddish porphyry mineralized</del>						
80	100	<del>Dark mineralized</del>						
	150	<del>Porphyry scattered mineralized</del>						
	200	<del>Schist greenish grey rock</del>						
	250	<del>Schist with some scattered mineralized</del>						
	350	<del>Schist scattered mineralized</del>						
	475	<del>Blocky schist with some inclusions of above</del>						
	514	<del>Blocky schist with some inclusions of above</del>						
		<u>End of Hole</u>						

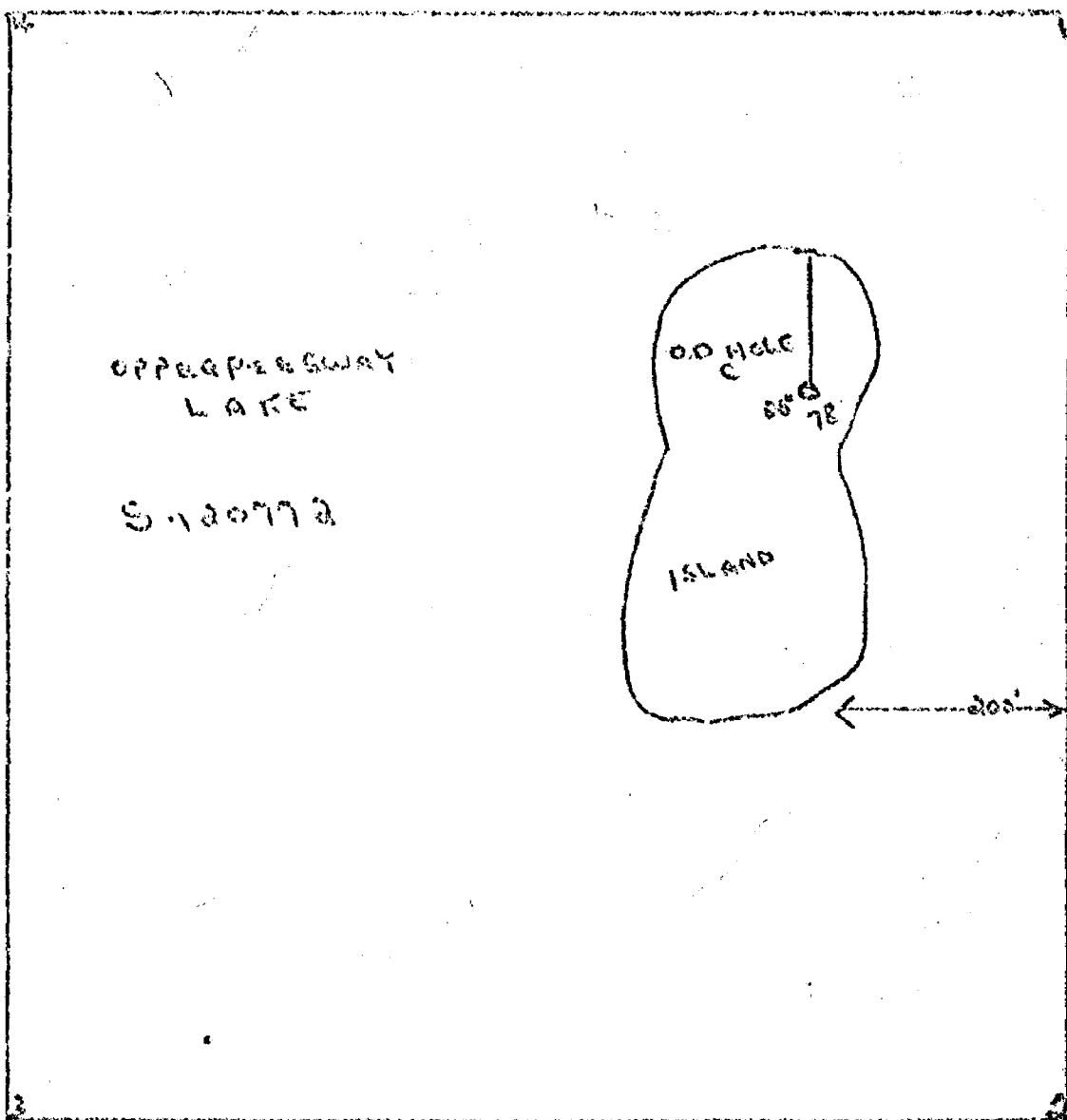
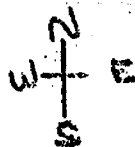


Date of Examination Sept 20/68

M. Burton

REPORT #10

OSWAY TWP



S. 120774

Sketch showing location of  
 Dredge Dull Hole<sup>C</sup> located on claim  
 S. 120772 Osway Twp  
 for assessment used on claims  
 S. 120771-74 inclusive Osway Twp.

#155/69 Osway Twp

Martin Burton

