



41010NE0070 20 CUNNINGHAM

010

Diamond Drilling

Township of CUNNINGHAM

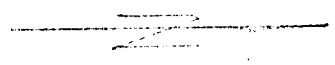
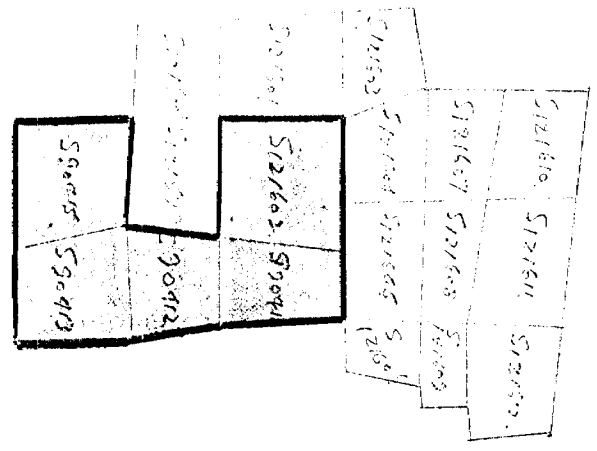
Report NO: 20

Work performed by: Consolidated Shunsby Mines

Claim NO	Hole NO	Footage	Date	Note
S 90415	1	75'	June/57	
	2	75'	June/57	
	3	50'	June/57	
S 121602	Jim-1	410	Aug/65	
	Jim-2	412' 1022'	Aug/65	

Notes:

Continued from page 1



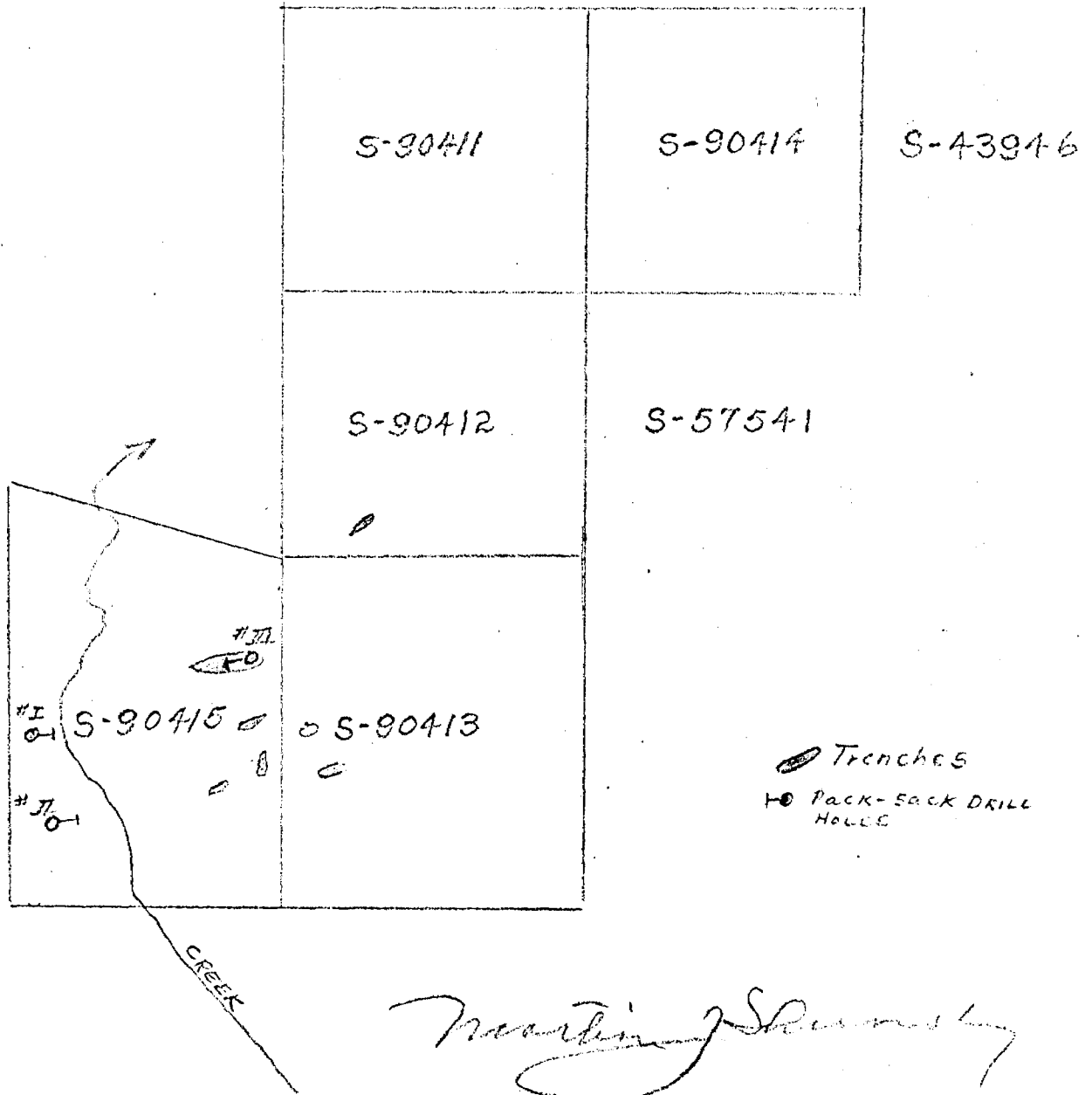
The squares are numbered
 as follows:

S121610	S121611	S121612
S121607	S121608	S121609
S121603	S121604	S121605
S121601	S121602	S121604
S121605	S121606	

The squares S121601, S121602, and S121604 are highlighted.

SHUNSEY MINES LTD

Plan Showing Location of work on
Claims # S-90411 - 12-13-14 and 15 Top of Cunningham



Martin Shunsey

Oct 12/57

DIAMOND DRILL RECORD

Hole # 1 --Claim S90415 --Location 300' NE. of #
Bearing -NE Angle 45 --"pack-sack drill"
Date: June 4, 1957.

From 0 to 45' Diorite no mineral
45 to 55' Broken up Diorite, some lost core
55 to 70' Badly ground much lost core, some pyrite-Diorite
70 to 75' Mostly lost core, caving, Diorite.
End of hole.

Hole # 2 --Claim S90415 --Location: 400' south of #1 hole
Bearing -NE Angle 45 --"pack-sack drill"
Date: June 8th, 1957

From 0 to 25' Diorite, no mineral
25 to 35' Open seam, lost core
35 to 55' Diorite, some narrow & stringer specks of pyrite
55 to 75' Much lost core, caving, specks of pyrite
End of hole.

Hole # 3 --Claim S90415 --Location: 200' south of #1 post,
50' west of Line
Bearing -sw Angle 45
Date: June 15th, 1957.

From 0 to 10' Chert, graphitic, pyrrhotite-pyrite, a little
galena sphalerite and chalco
10 to 25' Argillite graphitic, some pyrite, chalco and
sphalerite
25 to 35' Chert & argillite, a little pyrite chalco,
sphalerite & galena, much lost core
35 to 50' Argillaceous chert-graphitic, some sulphides
as above, much lost core & caving -- Top of
holes blasted showing fair mineralisation
with some chalco and a little sphalerite and
galena
End of hole.

Martin Shunsky

S 9040

S 9041



JIM # 2

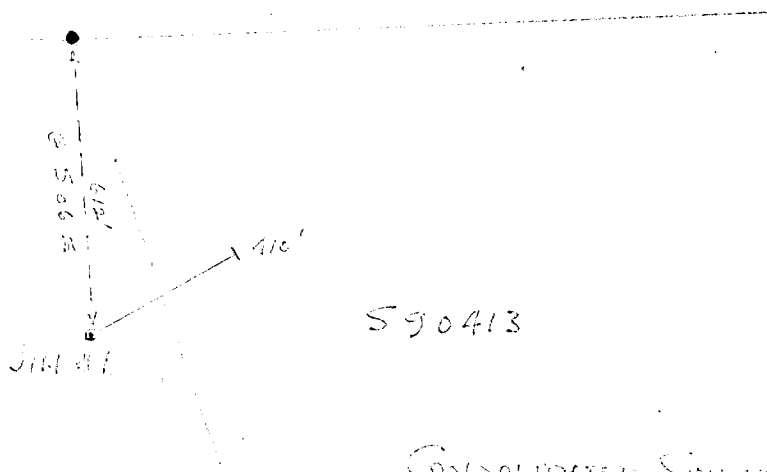
135'
N 62 W

1412'

DDH. JIM # 2 IS
135' @ N 62 W FROM
FACE NE 3 OF S 9041

S 9042

S 90412



S 90413

S 90413

DDH. JIM # 1 IS
135' @ N 62 W FROM
FACE NE 3 OF S 9041

CONSOLIDATED SINCERITY MINING LTD.
COLUMBIANA, MISSISSIPPI
PLAN OF STUDY TO NEW LOCATION
OF DRILL HOLES
SCALE 1" = 400'

G.A.C.

SEPTEMBER 1, 1965.

DIAMOND DRILL RECORD

PROPERTY Consolidated Stunsby Mines Ltd.

HOLE NO. JIM #1.

CLAIMS S 90415 - 590413

SHEET NUMBER 1

SECTION FROM 0.0 TO 410.0

STARTED August 9, 1965

LATITUDE 29° 5'

NORTH

DATUM _____

COMPLETED August 20, 1965

DEPARTURE 48400 W.

GRID

BEARING N62 E

ULTIMATE DEPTH 410.0

ELEVATION _____

DIP -30°

PROPOSED DEPTH _____

DEPTH FEET	FORMATION	SAMPLE NO.	WIDTH OF SAMPLE	GOLD \$	SLUDGE GOLD \$
0.0 - 10.0	CASING				
10.0 - 95.8	CHERT (IRON FORMATION)				
95.8 - 107.9	CHERT, BRECCIATED				
107.9 - 116.5	CHERT VARIABLE.				
116.5 - 213.6	GREENSTONE (VOLCANICS)				
213.6 - 242.4	CHERT				
242.4 - 251.0	CHERT - ARKILLITE.				
251.0 - 392.3	GREENSTONE (VOLCANICS)				
392.3 - 395.1	DIOKITE PORPHYRY.				
395.1 - 401.4	GREENSTONE (VOLCANICS)				
401.4 - 402.2	DIOKITE PORPHYRY.				
402.2 - 410.0	GREENSTONE				
@ 410.0	END OF HOLE.				

N.M.P., TORONTO - STOCK FORM NO. 501 REV. 12/51

DRILLED BY CONTINENTAL DIAMOND DRILLING LTD.
P. ISABELL, FOREMAN.

SIGNED G. A. Checklin
G. A. CHECKLIN, B.Sc., GEOLOGIST.

DIAMOND DRILL RECORD

RELOG

Property: Consolidated Shunsby Mines Ltd.

HOLE No. Jim # 1

Sheet No. 1

Section from 0.0 yo 410.0 End

Started: August 9, 1965

Latitude: 2+90S) North

Am. Basin

Bearing: N 62 E

Completed: August 20, 1965

Departure: 48+00W) Grid

90415

Dip: - 30°

Ultimate Depth: 410.0

Depth Feet	Description	Sample No.	Width of Sample	Cu	Zn
0.0 - 10.0	<u>Casing</u>				
10.0 - 116.5	<u>Chert</u> , Chert & Tuff Complex SAMPLE: 95.9 - 107.9	J 1	12.0'		0.10
116.5 - 213.6	<u>Greenstone</u> , <u>amyg.</u> volcs.				
213.6 - 242.4	<u>Chert</u> , Chert & Tuff Complex SAMPLES: 213.6 - 222.4 222.4 - 232.4 232.4 - 242.4	J 2 J 3 J 4	8.8' 10.0' 10.0'		0.54 1.35 2.05
242.4 - 251.0	<u>Chert</u> , Argillite				
251.0 - 259.8	<u>Footwall ? Diorite ?</u> , med/gr., fractured, py. @ contact (to 254.0')				
259.8 - 278.5	<u>?Intrusive</u> , f/gr.				
278.5 - 392.3	<u>Footwall? Diorite (?)</u> , continues, some f/gr. phases, variable				
392.3 - 395.1	<u>Felspar Porphyry (II)</u>				
395.1 - 401.4	<u>Footwall ?</u> , Diorite (?)				
401.4 - 402.2	<u>Felspar Porphyry (II)</u>				
402.2 - 410.0	<u>Footwall (?) Diorite (?)</u> @ 410.0				
	<u>END OF HOLE</u>				

ME
SN
BE
↓
cont.

ft x Zn
4.75
13.50
20.50
28.75 48.75 (1.69 % Zn ave)

Drilled by: Continental Diamond Drilling Co. Ltd.

P. Isabella, Foreman

signed: Geo. A. Checklin, geologist

DIAMOND DRILL RECORD

Property: Consolidated Shunsby Mines Ltd.

HOLE No. JIM # 1Sheet No. ~~12~~ 1

Section from --- to --

Started: August 9, 1965

Latitude: 290 S) North
) Grid

Datum: --

Completed August 20, 1965

Departure: 48+00 W)

Bearing N 62 E

Ultimate Depth 410.0'

Elevation --

Dip - 30°

Proposed Depth --

Depth Feet	Description	Sample No.	Width of Sample	Zn
0.0 - 10.0	Casing			
10.0 - 95.8	Chert, (Iron Form.) Banded at 70°, zones of silic. & h'e'en. (or conglom) weakly magnetic Pyrrho. assoc. with zones of silic, with very little cpy.			
95.8 - 107.9	Chert, brecciated, mainly pyrrho. min. but locally w.(?) replacement of pyrrho. by sphal.-gal.	J 1	12.0'	0.10
107.9 - 116.5	Chert, variable, Pyrrho.min. with py. & a little cpy.			
116.5 - 213.6	Greenstone (volcanics), locally amygdaloidal, with dense f/gr. greenish altered (?) zones, possibly a little sphal. in a fracture			
213.6 - 242.4	Chert, Sphal.gal. in thin streaky zones. Some of sphal. is orange not red-brown	J 2 J 3 J 4	8.8' 10.0' 10.0'	0.54 1.35 2.05
242.4 - 251.0	Chert-Argillite, banded at 65°-80° w.py.min.			
251.0 - 392.3	Greenstone (volcanics) 251.0 - 254.1 pyrite rich altered zone			
392.3 - 395.1	Diorite Porphyry, contact @ 30°			
395.1 - 401.4	Greenstone (volcanics)			
401.4 - 402.2	Diorite Porphyry			
402.2 - 410.0	Greenstone			
@ 410.0	END OF HOLE	TEST @ 300'	-	DIP OF HOLE -33°

Drilled by: Contin. Diamond Drilling Ltd.
P. Isabella, Foreman

sgd. Geo. Checklin, Geologist

Cause.

Cause
(I.C.)

95.8'
107.9'
116.5'

Cable

217.6'

242.9'
251.0'

Cable

Cable

Continuation of Survey of
...
...
...
... 40'

Electric
...
...
...
...

...
August 25, 1915.

...
...
...

DIAMOND DRILL RECORD

PROPERTY CONSOLIDATED STANSEY MINES LIMITED

HOLE NO. SIM # 2

CLAIMS S 121602, S 90411, S 90412

SHEET NUMBER 1

SECTION FROM 0.0' TO 412.0'

STARTED August 24, 1965

LATITUDE 20 8 60

DATUM _____

COMPLETED August 29, 1965

DEPARTURE 50 70

BEARING S 75 E.

ULTIMATE DEPTH 412.0'

ELEVATION _____

DIP - 30°

PROPOSED DEPTH _____

DEPTH FEET	FORMATION	SAMPLE NO.	WIDTH OF SAMPLE	GOLD \$	SLUDGE GOLD \$
0.0 - 8.0	<u>CASING</u>				
8.0 - 133.7	<u>GREENSTONE (VOLCS)</u>				
133.7 - 135.9	<u>GREENSTONE (BASALT)</u>				
135.9 - 142.1	<u>CHERT FLOW BRECCIA.</u>				
142.1 - 163.0	<u>GREENSTONE (VOLCS)</u>				
163.0 - 178.0	<u>GREENSTONE (BLACK VOLCS) GAS BUBBLES.</u>				
178.0 - 186.0	<u>CHERT (IRON FORMATION)</u>				
186.0 - 195.4	<u>CHERT & GREENSTONE BRECCIA.</u>				
195.4 - 241.7	<u>CHERT (IRON FORMATION)</u>				
241.7 - 252.2	<u>CHERT - ARCELLITE (?) BLACK.</u>				
252.2 - 256.7	<u>CHERT.</u>				
256.7 - 258.7	<u>ARCELLITE (?)</u>				
258.7 - 261.1	<u>CHERT</u>				
261.1 - 264.1	<u>ARCELLITE (?)</u>				
264.1 - 269.5	<u>CHERT.</u>				
269.5 - 275.6	<u>ARCELLITE.</u>				
275.6 - 277.5	<u>GREENSTONE (! DIORITE)</u>				
277.5 - 277.9	<u>ARCELLITE (?)</u>				
277.9 - 412.0	<u>GREENSTONE (VOLCS).</u>				
@ 412.0	<u>END OF HOLE.</u>				

N.M.P., TORONTO - STOCK FORM NO. 501 REV. 12/51

DRILLED BY CONTINENTAL DIAMOND DRILLING LTD.
E. MENARD, FOREMAN.

SIGNED Geat. Checklin
G.A. CHECKLIN, B.Sc., GEOLOGIST.

DIAMOND DRILL RECORD

Property: Consolidated Shunsby Mines Ltd.
Claims: S.121602, S90411, S.90412

HOLE NO. Jim # 2

Sheet No. 1 From: 0.0 - 412.0 Started August 24, 1965
Latitude 20 860 Completed August 29, 1965
Departure 5070 Bearing S 75 E Ultimate Depth: 412.0'
Dip - 30°

Depth Feet	Description	Sample No.	Width of Sample
0.0 - 8.0'	Casing		
8.0 - 133.7	Greenstone (volcs) py, pyrr.		
133.7 - 135.9	Greenstone (Basalt intr.or extr) riddled with pyrr. & a little cpy.		
135.9 - 142.1	Cherty Flow Breccia - Chunks of Chert exhibitions fine banding or fracturing with admixed & veinlike greenstone material (?flows) py and pyrr. min. (separate areas)		
142.1 - 163.0	Greenstone (volcs) f/gr basaltic lavas, w/sections of cherty flow breccia (?) pyrr.min with a little cpy. zn/cu assoc. with a few fractures.	Sample No. 011, 160.5-165.5 (5.0') 0.07% Cu 0.46% Zn	
163.0 - 178.0	Greenstone (black volcs.) exhibits gas bubbles at flow top, otherwise is like argillite cubic py. in a few bands. Sheared, banded to some extent @ 163.0 sphal. with pyrr. & cpy. in fracture at 60°.		
178.0 - 186.0	Chert (I.F.?) banded, light & dark bands, with magnetite locally in dark material, pyrr. min in darker bands.		
186.0 - 195.4	Chert & Greenstone Brecciate, chlorite cement pyrrho, py & a little cpy. min.		
195.4 - 241.7	Chert (I.F.) Light & dark irreg.bands, pyrr. & py. min. assoc. with darker bands.		
241.7 - 252.2	Chert-Argillite (?) black, sheared & banded @ 70° with massive py. locally.		
252.2 - 256.7	Chert		
256.7 - 258.7	Argillite (?)		

DIAMOND DRILL RECORD

Sheet No. 2

HOLE NO. Jim # 2

Depth Feet	Description
258.7 - 261.1	<u>Chert</u> , massive pyrite locally
261.1 - 264.1	<u>Argillite</u> (?), streaks & roundels of pyrite banding etc. @ 60°
264.1 - 269.5	<u>Chert</u> , lighter coloured than before, with some greenish alteration. Very sparse py. min. except for 0.5' of py at beginning. Thought to be the basal chert; unmineralized.
269.5 - 275.6	<u>Argillite</u> (?), start is f/gr, like basalt, later sheared or banded at 65°.
275.6 - 277.5	<u>Greenstone</u> (?Diorite) med/gr. feldspar rich, no femags.
277.5 - 277.9	<u>Argillite</u> (?)
277.9 - 412.0'	<u>Greenstone</u> , varies from grey (waxy looking) to coarse greenish basic mat. at end, approx. contact between int. & basic material @ 367.4'. 367.1 - 367.9 garb. veinlet @ 10° ± 15° to core with few specks of sphalerite
@ 412.0	END OF HOLE

Drilled by: Continental Diamond Drilling Co.
E. Menard, Foreman

sgd. Geo. A. Checklin
geologist

Property: Consolidated Shunsby Mines Ltd.

HOLE No. Jim # 2

Latitude: 20 860

Section from: 0.0 - 412.0

Started: August 24, 1965

Departure: 5070

Bearing: S 75 E

Completed: August 29, 1965

Dip

30° *This log drilled by*

Ultimate Depth: 412.0'

Depth Feet	Description	Width of			
		Sample No.	Sample	Cu	Zn Pb
0.0 - 8.0	Casing				
8.0 - 118.2	Greenstone, amyg. volcs.				
118.2 - 128.5	Greenstone, tuffs or B'ccd. volcs.				
128.5 - 136.0	Chert(?) (G/S)? Tuffs(?) hard, very f/gr, dark bluish to black (very much like argillite) py/pyrr, f/gr.				
136.0 - 177.3	Chert. Chert & Tuff sections in contact zone Chert B'cc.				
136.0 - 150.6	mainly chert B'cc. with sections of softer volcs.				
150.6 - 165.5	f/gr. dark tuffs with a few white frags. greenish at first soon Bec. darker finely dissem. pyrr (possibly some py)+ locally a little cpy.+ sphal. assoc. with carb. fractures.				
164.0 - 164.2	fracts. with carb.+ some cpy.				
@ 164.2	1/16" cpy. veinlet				
	SAMPLE: 160.5 - 165.5 (no lost core)	011	5.0'	0.09	0.46
165.5 - 175.5	f/gr dk. bluish tuffs, almost argillite in appearance, with cubic py. in bands.				
175.5 - 177.3	dk. f/gr tuffs, with a little cpy. @ sphal.				
177.3 - 275.6	Chert, chert & tuff complex, much dk. f/gr tuff in first 5 feet				
275.6 - 277.5	Grey tuff.				
277.5 - 277.9	Chert, argillite				
277.9 - 412.0	Footwall diorite				
@ 412.0	END OF HOLE				

Drilled by: Continental Diamond Drilling Co. Ltd.

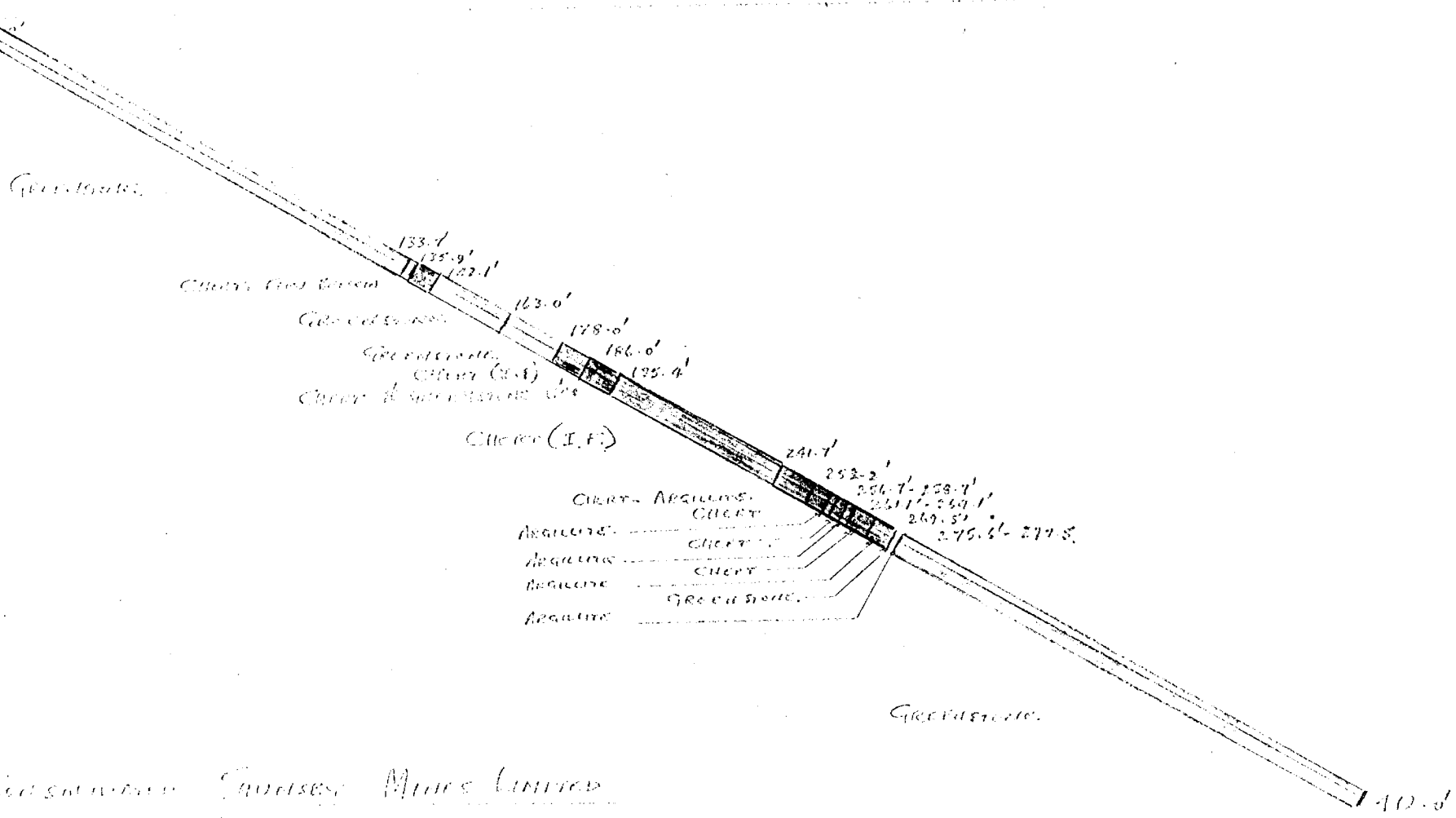
E. Menard, foreman

signed: Geo. A. Checklin, geologist

GrV
re
d

W

E



Canadian Inverness Mines Limited
 1000-11th St., Regina, Sask.
 1911
 1911
 1911
 1911

Geo. (Chert)
 Geo. (Argillite, & Co.)
 Geo. (Greenstone)