



41010NE0080 23 CUNNINGHAM

010

Diamond Dr. Log

Township of CUNNINGHAM

Report No. 23

Work performed by: Consolidated Shunshy Mines

Claim No	Section	Depth	Date	Remarks
S 121596	113	125.5'	Aug/66	
S 147117	114	156.0'	Aug/66	
	115	476.0'	Aug/66-Sept/67	
	68-17	431.0'	Dec/68	
S 114407	116	322.0'	Aug/66	
S 134876	A	168.0'	Sept/67	
	B-1	202.0'	Sept/67	
	B-2	303.0'	Sept/67	
	C	118.0'	Sept/67	

Notes:

DIAMOND DRILL RECORD

PROPERTY Continental Shaysby Mines Ltd.

HOLE NO. 113

SHEET NUMBER 1

SECTION FROM _____ TO _____

STARTED August 4, 1966

LATITUDE 46° 00' N } North

DATUM _____

COMPLETED August 7, 1966

DEPARTURE 1000 ft } Gravel

BEARING N 80° E

ULTIMATE DEPTH 125.5

ELEVATION _____

DIP 45°

PROPOSED DEPTH _____

DEPTH FEET	FORMATION	SAMPLE NO.	WIDTH OF SAMPLE	GOLD \$	SLUDGE GOLD \$
0.0 - 40.0	Gravel				
40.0 - 110.0	Gravel, thin sand, yellow clay, brownish loam, loam, & thin sand, light grey brown, thin, in veins & patches, loam, brownish, & brownish, thin loam, thin, some brownish, thin				
110.0 - 111.0	Gravel, thin, brownish, thin				
111.0 - 112.0	Gravel, thin, brownish, thin				
112.0 - 113.0	Gravel, thin, brownish, thin				
113.0 - 114.0	Gravel, thin, brownish, thin				
114.0 - 115.0	Gravel, thin, brownish, thin				
115.0 - 116.0	Gravel, thin, brownish, thin				
116.0 - 117.0	Gravel, thin, brownish, thin				
117.0 - 118.0	Gravel, thin, brownish, thin				
118.0 - 119.0	Gravel, thin, brownish, thin				
119.0 - 120.0	Gravel, thin, brownish, thin				
120.0 - 121.0	Gravel, thin, brownish, thin				
121.0 - 122.0	Gravel, thin, brownish, thin				
122.0 - 123.0	Gravel, thin, brownish, thin				
123.0 - 124.0	Gravel, thin, brownish, thin				
124.0 - 125.0	Gravel, thin, brownish, thin				
125.0 - 125.5	Gravel, thin, brownish, thin				

DRILLED BY Lucien Hone

SIGNED Paul H. H. H.

Property: Consolidated Shunsby Mines Ltd.
Claim No. S.121596

HOLE No. 113 (Seigel #12)

Sheet No. 1

Section from 0.0 to 125.0

Started: August 4, 1966

Latitude: 16+00 S) North
) Grid

Bearing: N 80 E

Completed: August 7, 1966

Departure: 14+00E)

Dip: - 45°

Ultimate Depth: 125.5'

Depth Feet	Description	Sample No.	Width of			
			Sample	Cu	Zn	Pb
0.0 - 40.0	Casing					
40.0 - 61.4	Chert, with some Chert B'cc. locally, badly leached & with much lost core. Py min. in veins & patches, locally weathered to brownish rusty masses with py. crystals in it. No other sulphides seen in it. Some fresh py.					
	43.5 - 44.1 Basic Intr.					
	44.8 - 46.0 1.2' lost core					
	52.7 - 52.8 pyrite, massive					
	53.5 - 53.7 py. network					
	55.3 - 56.7 1.4' lost core					
	57.9 - 59.7 py. rich section					
61.4 - 67.6	Greenstone, volcs., locally amyg. variable					
67.6 - 76.1	Greenstone, Tuffs, dark grey, f/gr.-m/gr., banded @ 60°, with pyrite veins often conformable with banding.					
	73.8 - 74.2 Py. in carb. frags., with a little sphal.					
	74.2 - 75.5 f/gr., good py. in bands & frags. & some sphal. traces of gal.					
	75.5 - 75.7 Py. in leached rock.					
76.1 - 125.5	Chert, variable, dark in beginning (gradation with tuffs?). Some tuff bands locally, cherty. Some f/gr creamy tuff, locally leached & rusty. Much lost core, py. min, but mainly rusted, one streak of sphal.					
	77.3 - 79.3 1.7' lost core					
	@ 79.3 streak of sphal. assoc. with good py. in tuffaceous band.					
	80.1 - 84.1 4.0' lost core.					
	92.0 - 92.6 cherty tuff					
	94.9 - 125.5 badly leached section					
	92.6 - 93.5 0.9' lost core.					
	96.4 - 98.4 2.0' lost core					
	99.2 - 101.3 2.3' lost core					
	106.0 - 108.8 2.8' lost core					

C

Gr V
Gr

Gr

fault
marked

Property: Consolidated Shunsby Mines Ltd.

Hole No. 113 (Seigel #12)

Sheet No. 2

Depth Feet	Description	Sample No.	Width of		
			Sample	Cu	Zn
76.1 - 125.5	Contd.				
	109.6 - 111.9 2.3' lost core				
	112.8 - 114.7 1.9' lost core				
	115.9 - 119.3 3.4' lost core				
	119.6 - 125.5 5.9' lost core				

@ 125.5

HOLE ABANDONED

Too much lost core. Hole seems to be close to rock surface. This indicates a sub-surface gully with a steep W.side.

No dip test

4' of casing pulled but other 36' lost

Drilled by: Continental Diamond Drilling Co. Ltd.

Lucien Leduc, Foreman

signed: Geo. A. Checklin,
Geologist

DIAMOND DRILL RECORD

PROPERTY Continental Drilling Co. Ltd.

HOLE NO. 1117

SHEET NUMBER 1

SECTION FROM 100 **TO** 100

STARTED August 1, 1966

LATITUDE 44° 38' 30" N

DATUM _____

COMPLETED August 10, 1966

DEPARTURE 5071' 30" W

BEARING N 80° E

ULTIMATE DEPTH 156.0'

ELEVATION _____

DIP 75°

PROPOSED DEPTH _____

DEPTH FEET	FORMATION	SAMPLE NO.	WIDTH OF SAMPLE	GOLD \$	SLUDGE GOLD \$
0-10	Drill				
10-107	Shaly, brown sandstone with lenses of thin shaly claystone full on horizontal. Some shaly claystone with some thin sandstone lenses.				
107-110	Shaly, brown sandstone with thin shaly claystone lenses.				
110-112	Shaly, brown sandstone with thin shaly claystone lenses.				
112-114	Shaly, brown sandstone with thin shaly claystone lenses.				
114-116	Shaly, brown sandstone with thin shaly claystone lenses.				
116-118	Shaly, brown sandstone with thin shaly claystone lenses.				
118-120	Shaly, brown sandstone with thin shaly claystone lenses.				
120-122	Shaly, brown sandstone with thin shaly claystone lenses.				
122-124	Shaly, brown sandstone with thin shaly claystone lenses.				
124-126	Shaly, brown sandstone with thin shaly claystone lenses.				
126-128	Shaly, brown sandstone with thin shaly claystone lenses.				
128-130	Shaly, brown sandstone with thin shaly claystone lenses.				
130-132	Shaly, brown sandstone with thin shaly claystone lenses.				
132-134	Shaly, brown sandstone with thin shaly claystone lenses.				
134-136	Shaly, brown sandstone with thin shaly claystone lenses.				
136-138	Shaly, brown sandstone with thin shaly claystone lenses.				
138-140	Shaly, brown sandstone with thin shaly claystone lenses.				
140-142	Shaly, brown sandstone with thin shaly claystone lenses.				
142-144	Shaly, brown sandstone with thin shaly claystone lenses.				
144-146	Shaly, brown sandstone with thin shaly claystone lenses.				
146-148	Shaly, brown sandstone with thin shaly claystone lenses.				
148-150	Shaly, brown sandstone with thin shaly claystone lenses.				
150-152	Shaly, brown sandstone with thin shaly claystone lenses.				
152-154	Shaly, brown sandstone with thin shaly claystone lenses.				
154-156	Shaly, brown sandstone with thin shaly claystone lenses.				

DRILLED BY _____

SIGNED _____

Property: Consolidated Shunshby Mines Ltd.

HOLE No. 114

Latitude 16+00S)
Departure: 13+97E) North
Grid

Section from: 0.0 - 153.4
Bearing: N 80 E
Dip - 75°

Started: August 7, 196
Completed: August 10, 196
Ultimate Depth: 156.0'

Depth Feet	Description	Sample No.	Width of Sample	Cu	Zn	Pb
0.0 - 22.0	Casing					
22.0 - 60.2	Chert, B'cc'd., with some tuff bands & with much creamy tuff or alteration (?), local zones of leaching, streaky appearance at 35°, local pyrite. 23.8 - 24.5 basic intrusive, tough, dark, granular, a little pyrite. 42.0 - 45.2 bands of cherty tuff @ 60° varied. @ 47.8 py. vein @ 50° 48.5 - 48.7 leached rock with specks of pyrite 57.4 - 58.7 1.3' lost core					
60.2 - 86.7	Greenstone, grey tuffs, much chert as fragments etc., banded faintly @ 40° @ 60.7 trace of cpy. 61.2 - 62.5 1.3' lost core 65.4 - 68.1 chert & cherty tuff, variable 65.4 - 66.2 traces of cpy. & sphal. 75.1 - 77.2 dike of white material (?Carb.) with specks of dk. mineral (Hb? Bi?) 75.8 - 77.1 1.3' lost core 79.0 - 80.1 cherty tuffs with good py. 82.4 - 83.8 tuffs, dark-green (rich colour) f/gr,w/ some larger cherty frags. banded @ 65°, with py. in bands (good) (no sphal. seen). 85.4 - 86.7 1.3' lost core.					
86.7 - 119.6	Chert, mainly massive but with some tuffaceous bands, locally leached & rusty, with breakdown of py. much lost core. Locally banded @ 60°. 87.3 - 88.5 several veins & blebs of rusted py. 92.8 - 93.5 basic intrusive. A little py. 92.9 - 93.4 0.5' lost core 100.6 - 106.7 6.1' lost core 107.7 - 119.6 massive chert, leached, much lost core 109.2 - 112.2 3.0' lost core					

C

Gr + e
(+T)

CD
+T

Hb = ?

DIAMOND DRILL RECORD

PROPERTY Consolidated Mining & Finance Ltd. HOLE NO. 114
Consolidated Mine, Claim # S. 121596

SHEET NUMBER _____ SECTION FROM 1560 TO 1581 STARTED _____
 LATITUDE _____ DATUM _____ COMPLETED _____
 DEPARTURE _____ BEARING _____ ULTIMATE DEPTH 1560
 ELEVATION _____ DIP _____ PROPOSED DEPTH _____

DEPTH FEET	FORMATION	SAMPLE NO.	WIDTH OF SAMPLE	GOLD \$	SLUDGE GOLD \$
	<u>Very fine, brownish to yellow, silty, clayey sandstone, locally shaly, with some thin, irregularly bedded, shaly partings.</u>				
	<u>Very fine, brownish, silty, clayey sandstone, locally shaly, with some thin, irregularly bedded, shaly partings.</u>				
	<u>The highest of the above is a very fine, brownish, silty, clayey sandstone, locally shaly, with some thin, irregularly bedded, shaly partings.</u>				
	<u>The above is a very fine, brownish, silty, clayey sandstone, locally shaly, with some thin, irregularly bedded, shaly partings.</u>				

N.M.P., TORONTO—STOCK FORM NO. 501 REV. 12/51

DRILLED BY Consolidated Mining & Finance Ltd. SIGNED Geoff. Sheehan G.M. & F.
Lucien LeDuc, Foreman. USE, TORONTO.

Property: Consolidated Shsnsby Mines Ltd.

Depth Feet	Description	Width of		
		Sample No.	Sample	Cu Zn
86.7 - 119.6	-Continued-			
	113.3 - 117.0 3.7' lost core			
	117.7 - 119.0 1.3' lost core			
119.6 - 135.1	Basic Intrusive f/gr at 1st contact, becoming coarser grained, light & dark phases, grey-green, <u>leucoxene</u> , locally streaked out @ 35° mach lost core.			
	121.0 - 122.0 1.0' lost core			
	126.2 - 128.0 1.8' lost core			
	128.3 - 130.0 1.7' lost core			
	130.9 - 132.0 1.1' lost core			
	132.5 - 134.7 2.2' lost core			
135.1 - 139.3	Lost core (4.2')			
139.3 - 156.0	Chert, massive leached & mostly lost core			
	139.3 - 140.0 Chert, 1 fragment of qtz. vein material			
	140.0 - 144.3 4.3' lost core			
	144.3 - 144.5 qtz. vein material, locally leached			
	144.5 - 149.8 5.3' lost core			
	150.0 - 153.4 3.4' lost core			
	153.4 - 154.0 mainly black chert with a little py.			
	@ 153.4 fragment of white qtz.			
	154.0 - 155.7 1.7' lost core.			

@ 156.0

HOLE ABANDONED

This hole was drilled at the same station as #113 (Seigel # 12) but at -75° (and not at -45° as for #113) in order to try to miss the broken + leached ground encountered in hole #113. However, this bad ground evidently extends down dip to the W for some distance.

4 sludges tested by geochemical kit for total heavy metals. Two gave very weak positives. A composite was run with nitric and digestion & ammonium hydroxide reagent, but no colour appeared.

Drilled by: Continental Diamond Drilling Co. Ltd.
Lucien Leduc, foreman

signed: Geo. A. Checklin, geologist

DIAMOND DRILL RECORD

PROPERTY Continental Shinsky Mines Ltd HOLE NO. # 115
CUNNINGHAM TWP., CO. NO. S11402

SHEET NUMBER 1 SECTION FROM _____ TO _____ STARTED August 11, 1966
 LATITUDE 46° 57' North DATUM _____ COMPLETED August 16, 1966
 DEPARTURE 8490 E } Grid BEARING N 80 E ULTIMATE DEPTH 572.5'
 ELEVATION _____ DIP 60° PROPOSED DEPTH _____

DEPTH FEET	FORMATION	SAMPLE NO.	WIDTH OF SAMPLE	GOLD g	SLUDGE GOLD g
0.0 - 18.0	CASING				
18.0 - 179.0	GREENSTONE, ANHYDRAIDAL VOLCANICS				
179.0 - 207.6	CHERT, CHERT & TUFF COMPLEX WITH SOME ARGILLIC, VARIABLE, PY & PYRR MIN LENS & SPARS.				
207.6 - 234.9	BASIC DIKE, VARIABLE, TUFFY, HARD, MAFIC, WITH TUFFED QUARTZ CRYSTALS, CHANGING TO LOWER GREENISH MATERIAL, A LITTLE DISSOL. PY. ANG. IN CHERTS & CASINGS.				
234.9 - 242.4	CHERT, CHERT AS BEFORE				
242.4 - 268.4	GREENSTONE, CHERT TUFFS, MAINLY, WITH CHERT TUFFS, L. QUARTZ, TANGENT, PULVER LOCALY				
268.4 - 281.7	? INTERMEDIATE INTRUSIVE, F/GK, BROWNISH, MUCH FUSIBLE (?) A LITTLE PY (POSSIBLY VOLC. FEED?)				
281.7 - 287.7	GREENSTONE, CHERT TUFFS				
287.7 - 292.4	? INTERMEDIATE INTRUSIVE (?) HOMOGENEOUS, BLENDED AT ALL ANGLES, CONTACTS INDISTINCT.				
292.4 - 300.4	GREENSTONE, TUFFS, FINE BUT STRAIGHT				
300.4 - 328.8	CHERT, VARIABLE, MASSIVE TO BANNED CHERT				

N.M.P., TORONTO-STOCK FORM NO. 501 REV. 12/51

DRILLED BY Lucien Levesque, Foreman

SIGNED Geol. Charles G. H. Clark Ltd. (S.C.)
6000157

DIAMOND DRILL RECORD

PROPERTY CONSOLIDATED MINING & DEVELOPMENT LTD

HOLE NO. # 115

SHEET NUMBER 2 SECTION FROM _____ TO _____ STARTED _____
 LATITUDE _____ DATUM _____ COMPLETED _____
 DEPARTURE _____ BEARING _____ ULTIMATE DEPTH 372.5'
 ELEVATION _____ DIP _____ PROPOSED DEPTH _____

DEPTH FEET	FORMATION	SAMPLE NO.	WIDTH OF SAMPLE	GOLD \$	SLUDGE GOLD \$
	1 TUFF COMPLEX Poor PYRITE MIN				
	309.1 - 310.1. Basic Intr., Highly				
	FRACTURED & SHEARED @ 35°-50°				
	311.2 - 311.9. SAME.				
	312.4 - 313.3. "				
328.8 - 339.4	BASIC ? INTR. ? F/GR. CONTACTS. Grey, WITH				
	COARSE GREENISH MATERIAL IN CENTRE.				
	SOFT.				
339.4 - 339.9	WHITE INTRUSIVE (?) OFF-WHITE, SPICES OF				
	DARK MINERAL THROUGHOUT. NO VISIBLE				
	SULPHIDES. GROUND CONTACTS.				
339.9 - 348.1	CHERT. CHERT & TUFF COMPLEX. IN				
	LOCALLY MUCH LOSE CORE.				
348.1 - 372.5	F/GR. DIORITE. FOOTWALL. LIGHT-GREEN,				
	BECOMING DARKER. ONE SECTION				
	HIGHLY FRACTURED @ 65° (ALMOST				
	SHEARED), WITH CARB. INFILLING, SPARSE				
	PYRITE ASSOC. WITH CARB. SOME LOSE				
	CORRE				
ca 372.5	END OF HOLE				

Property: Consolidated Shuhsby Mines Ltd.

HOLE NO. 115 (16A)

Latitude: 16+00 S } N. Grid

Section from: 0.0 to 372.5

Started: August 11, 1966

Departure: 8+90E }

Bearing: N 80 E

Completed: August 16, 1966

Dip - 60°

Ultimate Depth: 372.5'

Depth Feet	Description	Sample No.	Width of Sample	Cu	Zn	P
0.0 - 18.0	Casing					
18.0 - 179.0	Greenstone, Amyg, volcs, variable, mainly light or dk. green, but locally silic. (when brownish or purple, fractured with carb. filling + a little py. in the veinlets. Some minor sections of tuff. 42.4 - 42.7 basic intr. 171.5 - 179.0 contact zone, fractured g/s with intruded dk-grey, cherty material + some tuff with b'cc. frags. in it locally.					
179.0 - 207.6	Chert. Chert + tuff complex with some argillite, variable, chert both banded + b'ccd., py in bands locally but sparse + pyrr. local. mere traces of cpy. + sphal. in argillite + tuff sections. 203.- 207.6 B'cc. with coarse frags. altered to greenish tinge, assoc. with pyrr. min. (alt'n. at contact with basic dike below)					
207.6 - 234.9	Basic Dike, variable, f/gr contacts - 1st contact @ 40°. Bluish grey, hard, med/gr. with felted white crystals in beginning, with a little dissem. sulphide (?py, pyrr), changing to greener, coarser, with more granular structure. 2nd contact badly broken.					
234.9 - 242.4	Chert, much as before, banded, with bands locally distorted, tuff bands included, silicified + hard pyrr. min. 234.9 - 240.2 greenish alt'n. along bands in chert, especially assoc. with pyrr. min. (alt'n. assoc. with basic dike above?)					
242.4 - 268.4	Greenstone, grey tuffs, mainly with cherty frags. surrounded by l/green matrix (some doubt as to correct name, but not normal b'ccd. chert), py. min. locally traces of leucoxene towards end.					
268.4 - 281.7	?Intermediate Intrusive, f/gr., brownish, much felspar, but too f/gr. for proper min. determination. A little py. 1st contact., f/gr (lighter colour @ 15°. Locally streaky but this may be due to "drill scoring", f/gr leucoxene. Possibly a flow but does not show flow structures.					
281.7 - 287.7	Greenstone, grey tuffs, soft, coarse frags. streaky @ 35° but indiv. grains are fairly indistinct (?show some alt'n. 287.2 - 287.7 Qtz/Carb. vein @ 40°					

Go V

SE

lake

RE

W. pit

N.B. Sludge lost

Fault?

Property: Consolidated Shunsby Mines Ltd.
Cunningham Twp. Claim S.114402

HOLE No. 115 (16A)

des. |
des. SW
D C
48' int
des.
des. → d

Depth Feet	Description	Width of		
		Sample No.	Sample	Cu Zn Pb
287.7 - 292.4	<u>Intermediate Intr(?)</u> , homog., fractured at all angles. Contacts w/adjacent greenstone indistinct (may be a part of greenstone).			
292.4 - 300.4	<u>Greenstone</u> , ?Tuffs, fine-gr. but streaky material similar to above.			
300.4 - 328.8	<u>Chert</u> , variable, massive to banded chert & tuff complex. Poor py. min.			
	309.1 - 310.1 basic intr., fractured, l/green, soft.			
	309.5 - 310.1 highly fractured, sheared @ 35° to 50° with short streaks of ?carb. aligned like THS			
	311.2 - 311.9 basic intr., waxy, l/green, soft.			
	311.4 - 311.7 intensely sheared @ 50°			
	312.4 - 313.3 basic intrusives with some chert between			
	312.4 - 312.8 intensely sheared @ 50°			
	327.9 - 328.8 qtz. vein @ 90°			
328.8 - 339.4	<u>Basic?Intr.?</u> , f/gr contacts, grey with coarser greenish material in centre, soft.			
339.4 - 339.9	<u>White intrusive(?)</u> (off-white) soft, with specks of dark mineral giving it a pepper + salt appearance. No visible sulphides, ground contacts.	7		0
339.9 - 348.1	<u>Chert</u> , chert & tuff complex. A little py. locally. Banding @ 60°. Much lost core. Some frags. of bluish chert.			
	340.1 - 342.5 2.4' lost core			
	342.5 - 342.6 frags. of tuff w/chert frags., py. dissem.			
	342.6 - 345.4 2.8' lost core			
348.1 - 372.5	<u>F/Gr.Diorite</u> , footwall, creamy-green in beginning becoming darker, one section highly fractured (almost sheared) @ 65°, with carb. infilling. From 361.0 much irreg. fracturing at low angles to core, with carb. + sparse py. assoc. with the carb. leucoxene general, locally good. Some lost core.			
	354.3 - 356.5 2.2' lost core			
	371.7 - 372.5 0.8' lost core			

@ 372.5 END OF HOLE

Casing left in
Sludges lost at 52.0'
64°
57°

Dip test @ 350' Uncorrected
Corrected

S 671589

(P)

S 61830

(P)



115

0

S 114402

S 121596

CONSOLIDATED SURVEY PLANS FOR
CUMBERLAND TOWN SUBURBY

Geod. Checklin

G. A. CHECKLIN, B.Sc.,
Geodist

LOCATION OF DEPT. HOLDING OF CLASS 115
S 114402

SCALE: 1" = 100'

G.A.C.

August 19, 1911

DIAMOND DRILL RECORD

PROPERTY Consolidated Shunshby Mines Ltd.

S. 347117 (formerly S. 114402)

HOLE NO. 115 Extension
Cunningham Imp.

SHEET NUMBER 1

SECTION FROM 372.0' TO 476.0'

STARTED Sept. 6, 1967

Hole Collar 220' S. 65' W
LATITUDE of No. 1 Post

DATUM _____

COMPLETED Sept. 7, 1967

DEPARTURE _____

BEARING N 80 E

ULTIMATE DEPTH 476'

ELEVATION _____

DIP -60°

PROPOSED DEPTH _____

DEPTH FEET	FORMATION	SAMPLE NO.	WIDTH OF SAMPLE	GOLD \$	SLUDGE GOLD \$
0 - 372	Drilling in 1966; earlier reported and credit received. Was then claim S. 114402. This report relates to deepening of this earlier hole (formerly Cons. Shunshby #115)				
372 - 427	Diorite				
427 - 470	Feldspar porphyry				
470 - 472	Diorite				
NOTE:- See vert. sect. for additional detail.					

N.M.P., TORONTO-STOCK FORM NO. 501 REV. 12/51

DRILLED BY Continental Diamond Drilling Co. Ltd.

SIGNED _____

Francis R. Joubin
Franc. R. Joubin, Geologist

DIAMOND DRILL RECORD

PROPERTY Consolidated Shunsky Mines Limited

115

HOLE NO. Logged by Franc. R. Joubin

SHEET NUMBER 1

SECTION FROM _____ TO _____

STARTED 1/11/51

LATITUDE _____

DATUM meas. 1/11/51

COMPLETED _____

DEPARTURE _____

BEARING _____

ULTIMATE DEPTH 476.0

ELEVATION _____

DIP _____

PROPOSED DEPTH _____

DEPTH FEET	FORMATION	SAMPLE NO.	WIDTH OF SAMPLE	GOLD \$	SLUDGE GOLD \$
0 - 18	Overburden				
18 - 42.4	Gst. amyd.				
42.4 - 66.4	" "				
66.4 - 114.7	" "				
114.7 - 175	" "				
175 - 208	Gst-arg-chert fault breccia, some erratic pyr.				
208 - 235	Basic dyke, f.gr., peridotite, chalky streak				
235 - 245	Gst. chert, arg. breccia, as before				
245 - 250	Basic dyke, as above, f.gr. peridotite				
250 - 259	Gst., minor chert, sp. pyr.				
259 - 268	" , increasing chert (amyd.?) & sp. pyr.				
268 - 281	Intr. f.gr. , bit like 208 & 245				
281 - 283	Cherty material, chilled edge of dyke?				
283 - 301	Gst. f.gr., mass. could be dyke				
301 - 307	Chert on abrupt contact; 4" lost core				
307 - 329	Chert, rough bedding @ 50°, no min.				
329 - 331.5	Lost core				
331.5 - 345	Dyke, fine gr. gran. green, some carb. bands expands				
	Lost core from 340 - 345				
345 - 347	Chert, black, banded 50°, sp. pyrite				

Gr. V
 Gr. +
 dyke
 dyke
 Dyke
 + trinitite

DIAMOND DRILL RECORD

PROPERTY Consolidated Shunsby Mines Limited

HOLE NO. 115

Logged by Franc. R. Joubin

SHEET NUMBER <u>2.</u>	SECTION FROM _____ TO _____	STARTED _____
LATITUDE _____	DATUM _____	COMPLETED _____
DEPARTURE _____	BEARING _____	ULTIMATE DEPTH _____
ELEVATION _____	DIP _____	PROPOSED DEPTH _____

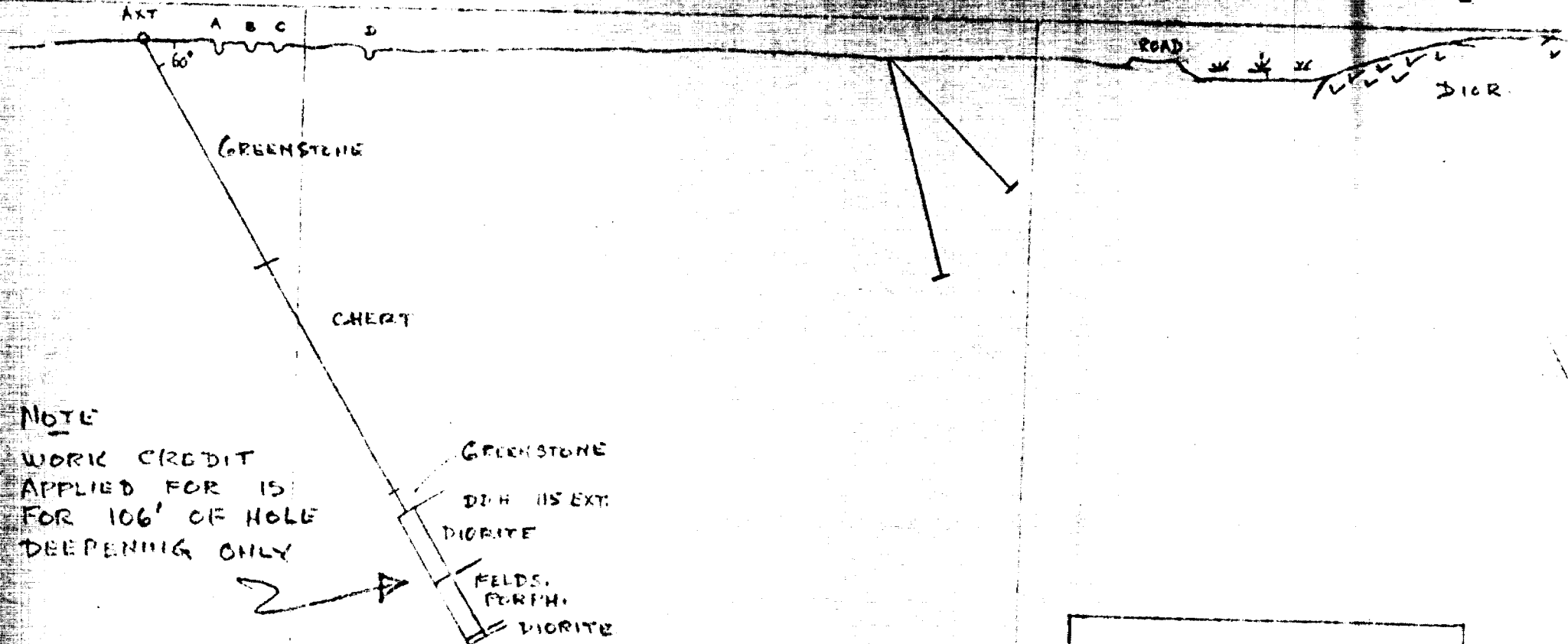
(Lit?)
GR
dets

DEPTH FEET	FORMATION	SAMPLE NO.	WIDTH OF SAMPLE	GOLD \$	SLUDGE GOLD \$
357 - 358	Dyke, fine gr. grey-green like 331 - 345				
358 - 371	Gst. streaky qtz. or carb. like cont. zone of dyke				
371 - 372	Core lost END				
372 - 427	Diabase - Fresh				
427 - 470	Porphyry - white filopars - Fresh 2 nd at 70'				
470 - 476	Diabase - Fresh. Normal. F.W. Diabase 1 END OF LOG				

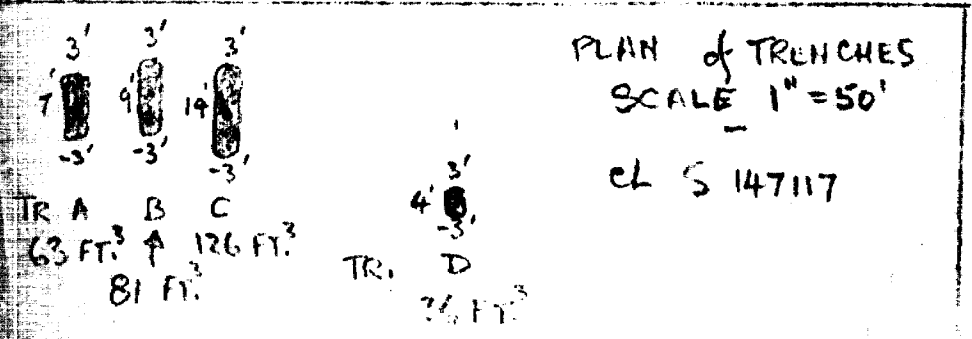
d
fs. T
d

U.S.G. FORM NO. 1001-101 REV. 12/51

DI 115 EXT
 BRG N 80° E
 COLL. 220 S 65° W OF NO 1 POST

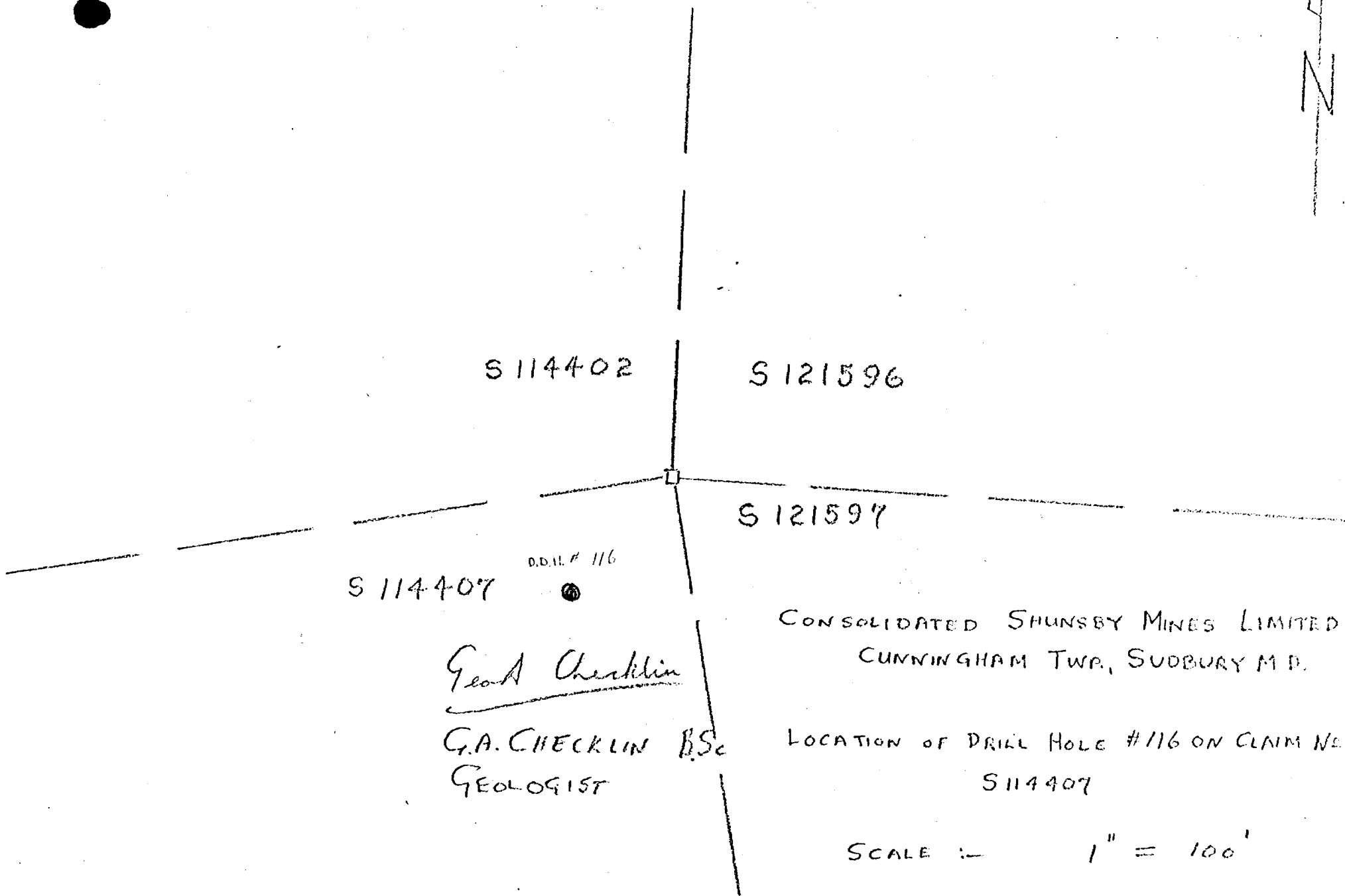


NOTE
 WORK CREDIT
 APPLIED FOR IS
 FOR 106' OF HOLE
 DEEPENING ONLY



CLAIM S 147117
 CUNNINGHAM TWP.
 SUDBURY M.D
 SECT. 16+00S
 SCALE
 1" = 100'

FEET
 9 26-07
 67



S 114402

S 121596

S 121597

S 114407

D.D.H. # 116

Geo. A. Checklin

G.A. CHECKLIN B.Sc.
GEOLOGIST

CONSOLIDATED SHUNSBY MINES LIMITED
CUNNINGHAM TWP., SUDBURY M.D.

LOCATION OF DRILL HOLE #116 ON CLAIM NO.
S 114407

SCALE :- 1" = 100'

G.A.C.

AUGUST 19, 1966.

DIAMOND DRILL RECORD

PROPERTY CONSOLIDATED SHUNSBY MINES LIMITED

HOLE NO. #116

CLAIM NO. 5114407

SHEET NUMBER 1

SECTION FROM 0.0 TO 170.8

STARTED August 18, 1966

LATITUDE 84°00' S } SOUTH

DATUM _____

COMPLETED August 20, 1966

DEPARTURE 25438 E } GRID.

BEARING _____

ULTIMATE DEPTH 522.0'

ELEVATION _____

DIP -90°

PROPOSED DEPTH _____

DEPTH FEET	FORMATION	SAMPLE NO.	WIDTH OF SAMPLE	GOLD \$	SLUDGE GOLD \$
0.0 - 6.0	CASING, Casing started at 5.4'				
5.4 - 19.4	SEDIMENTS, ARGOSSE(?) VARIABLE, HARD, COARSE				
19.4 - 37.8	BASIC INTRUSIVE (?) DK. GREEN, SOFT, WITH A Little Pyrite & very sparse CPY. Also, with Purple Tinted, Harder, SECTION (?) Boulder or Remnant of ORIGINAL ROCK? EXTRUSIVE.				
37.8 - 46.8	INTERMEDIATE INTRUSIVE, FGR, GREY-BROWN Granular, HARD, SPARSE PYRITE locally, Finely Disseminated				
46.8 - 143.6	BASIC INTRUSIVE (OR EXTRUSIVE), DARK (RED/BROWN) Chloritic, sheared at 50°. Purple-Tinted Harder Sections (?) Boulder, original rock? Which are locally porphyritic				
143.6 - 149.6	INTRUSIVE GRANULAR, FGR. TO M/FGR., A little PY. LC PLACES				
149.6 - 151.7	SEDIMENTS (?) QUARTZITE (?) ARGOSSE (?) COOD				
151.7 - 170.8	SEDIMENTS (?) GREY WACKLE GREENISH TUFFIC - HONEYCOMBED WITH LAMINAE OR STRUCTURE @ 50° IMMENSE INCLUSION BETWEEN STRIPS BY BASIC MATERIAL & DEPOSITION OF PYRITE & PYRITIC IN THE FELSIC MATERIAL. NO VISIBLE CPY ETC.				

DRILLED BY CONTINENTAL DIAMOND DRILLING CO. LTD.
LESLIE LEBOUC, FOREMAN.

SIGNED Geoff. Cheeklin G.A. CHEEKLIN, B.Sc.,
GEOLOGIST.

DIAMOND DRILL RECORD

PROPERTY CONSOLIDATED SHUNSBY MINES LIMITED

HOLE NO. # 116

SHEET NUMBER 2 SECTION FROM 170.8 TO 287.9 STARTED _____
 LATITUDE _____ DATUM _____ COMPLETED _____
 DEPARTURE _____ BEARING _____ ULTIMATE DEPTH _____
 ELEVATION _____ DIP _____ PROPOSED DEPTH _____

DEPTH FEET	FORMATION	SAMPLE NO.	WIDTH OF SAMPLE	GOLD \$	SLUDGE GOLD \$
170.8-197.4	SEDIMENTS, GREY WACKE (?) SHALLOO OR BANDED, WITH MAFIC MATERIAL (BASIC INTRUSIVE?) IN STRIANS.				
197.4-211.4	INTERMEDIATE INTRUSIVE MGR., GRANULAR, GREY, FAIRLY SOFT.				
211.4-211.9	BASIC INTRUSIVE				
211.9-214.2	SEDIMENTS, QUARTZITE INTERBED BY BASIC INTR., BLACK & BROWN ARSIC. WITH BASIC MATERIAL				
214.2-216.2	SEDIMENTS, SILICEOUS (?) IMPURE QUARTZITE OR AROSE CONG. & FINE GRAINED TYPES BINDING AT 45°-50°. GENERALLY HARD WITH SOFTER SECTIONS				
216.2-218.11	INTERMEDIATE INTRUSIVE, L/GREY WITH BROWN AL. THROUGH IT				
218.4-224.8	SEDIMENTS, SILICEOUS, AS BEFORE.				
224.8-228.5	INTERMEDIATE INTRUSIVE. (PORPHYRITIC? OR WITH INCLUSIONS)				
228.5-234.8	SEDIMENTS, SILICEOUS & ARGILLACEOUS, BANDED				
234.8-247.9	INTERMEDIATE INTRUSIVE, MAFIC MATERIAL IN A REGULAR NETWORK OF FELSIC MATERIAL. IS IN F/GK. CONG. NOT IN CONTACT MAT ^l				
247.9-287.9	SEDIMENTS, SILICEOUS & ARGILLACEOUS, BANDED at 45°-50°				

N.M.P., TORONTO-STOCK FORM NO. 501 REV. 12/51

DRILLED BY CONSOLIDATED SHUNSBY MINES CO. LTD.
LUCIEN GEMIC, FOREMAN.

SIGNED Geoff. Chudley, S. A. Check out,
B.Sc., Toronto 1957

DIAMOND DRILL RECORD

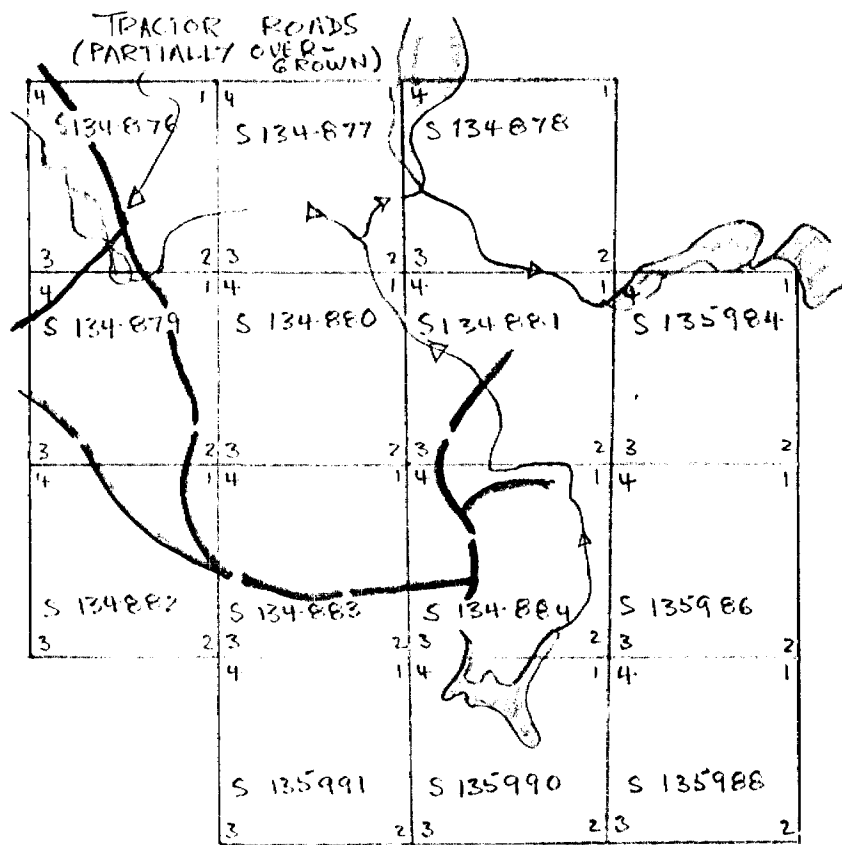
PROPERTY Consolidated Stensby Mines Limited HOLE NO. 116

SHEET NUMBER 3 SECTION FROM 287.9 TO 322.0 STARTED August 18, 1966
 LATITUDE _____ DATUM _____ COMPLETED August 20, 1966
 DEPARTURE _____ BEARING _____ ULTIMATE DEPTH 322.0'
 ELEVATION _____ DIP _____ PROPOSED DEPTH _____

DEPTH FEET	FORMATION	SAMPLE NO.	WIDTH OF SAMPLE	GOLD \$	SLUDGE GOLD \$
	260.0 - 261.7 Basic Tuff. 1/4 in. Sph.				
	Dark Green.				
287.9 - 289.7	Intermediate Intrusive				
289.7 - 311.8	Sediments, Siliceous & Argillaceous, As Bedrock.				
311.8 - 313.6	Intermediate Intrusive, Light Grey, Little Matrix Mass of Limestone				
313.6 - 317.6	Sediments, Siliceous & Argillaceous, As Bedrock.				
317.6 - 320.3	Intermediate Intrusive.				
320.3 - 321.6	Sediments Argillaceous				
321.6 - 322.0	Intermediate Intrusive				
@ 322.0	End of Hole				
	Casing left in				
	Drifted to 320'				
	Corridor dip 80°				

GROUP SKETCH

NOT TO BE USED FOR MORE THAN 18 CLAIMS



CUMMINGHAM TWP.
SUDBURY, M.D.

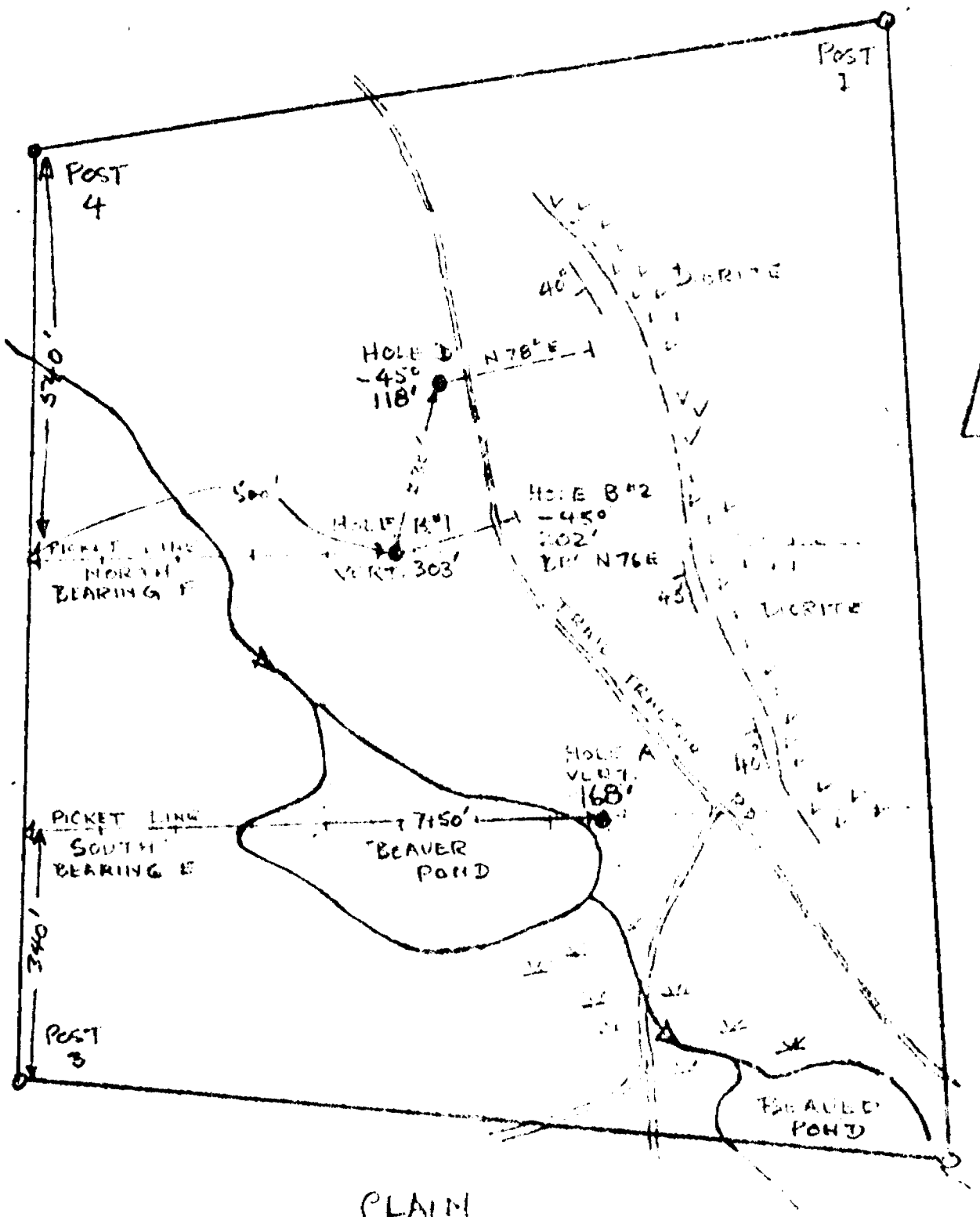
13 M

SCALE: 1 INCH = 1320 FEET
(20 CHAINS)

SHOW ALL CLAIM LINES, POSTS, DISTANCE BETWEEN POSTS, TIE ONS,
WATER, WITNESS DISTANCES, HYDRO LINES, ROADS, RAILROADS, BUILDINGS,
THAT ARE APPLICABLE.

SEPT 27 1967
DATE

Frank Joubert
SIGNATURE



CLAIM
5 134876
CUNNINGHAM TWP.
SUDBURY MD.

SCALE
1" = 200'

FRJ
9-26-67

DIAMOND DRILL RECORD

PROPERTY Consolidated Shunshy Mines Ltd.

HOLE NO. A

Claim S.134876 Cunningham Township

SHEET NUMBER 1

SECTION FROM 0.0 TO 168'

STARTED Sept. 18, 1967

~~XXXXXXXX~~ Hole collar 340' N and

DATUM _____

COMPLETED Sept. 21, 1967

~~XXXXXXXX~~ 750 East of Post No. 3

BEARING -

ULTIMATE DEPTH 168'

ELEVATION _____

DIP Vertical

PROPOSED DEPTH _____

DEPTH FEET	FORMATION	SAMPLE NO.	WIDTH OF SAMPLE	GOLD \$	SLUDGE GOLD \$
0 - 38	Casing				
38.0 - 60.0	Chert, porcellaneous, generally massive, some fract. and local breccia. Sp.pyrite increasing between 43' and 47'				
60 - 65.0	Dyke, greenstone, f.gr.text. Fresh, First cont. at 45° to hole/				
65.0 -	Chert, impure dk. grey colour, gst. and chlorite (lexcoxene) content				
- 148	Sparse pyrite only, except at 115 - 117 where pyrite quite heavy. From 125 to 135' mainly silicified argillite. From 135 to 137 fairly plentiful phyrrotite. From 137 to 148 banded (45°) cherty arg. with sp. to locally plentiful pyrite.				
148.0 - 152	Gst.fragments, poss. f.gr. diorite, graphite slips at Contact. Fault? Rel. bleached and cut by pink calcite stringers.				
152 - 168	CAVE, about 4' core recovered as "buttons", Diorite				
168	END OF HOLE				

DIAMOND DRILL RECORD

PROPERTY Consolidated Shunby Mines Ltd.

HOLE NO. B #1

Claim S.134876, Cunningham Township

SHEET NUMBER 1

SECTION FROM 0.0' TO 202'

STARTED Sept. 10, 1967

~~LOCATION~~ Hole Collar 540' south and DATUM _____

COMPLETED Sept. 13, 1967

~~DEPARTURE~~ 500' east of Post No. 4

BEARING ----

ULTIMATE DEPTH 202'

ELEVATION _____

DIP vertical

PROPOSED DEPTH _____

DEPTH FEET	FORMATION	SAMPLE NO.	WIDTH OF SAMPLE	GOLD \$	SLUDGE GOLD \$
0 - 32	Casing				
32 - 57.5	Chert, porcellanous, and from 52' on darkening in colour to black massive, only fractures and sparse pyrite and phyr.				
57.5 - 60.0	Dyke, f.gr.mass.grey green and siliceous				
60.0 - 110.0	Chert, dk.grey to black,same brecciation,much chlorite or leucoxene occurs,sparse cube pyrite + phyr., local minor arg.,much sheared 105-110.				
110.0 - 110.5	Lost core.				
110.5 - 115.0	Chert & arg.,mixed,broken,sparse pyrite + phyr.				
115.0 - 115.5	Lost core				
115.5 - 143.0	Chert,porcellaneous,shreddy black type,slight fract. at 137-9 slight oxid & fract.s.generally oxidized from 125' to 150'				
143.0 - 174.0	Arg.mainly,minor chert,local fract,and shearing Pyrite,cubic in argillite. at 172' 0.5' lost core				
174.0 - 174.5	Core lost				
174.5 - 186.0	Arg.,graphitic,f.gr.banded pyrite				
186.0 - 202.0	Greenstone or Diorite,Bleached,f.gr.				
202'	END OF HOLE				

DIAMOND DRILL RECORD

PROPERTY Consolidated Shunsby Mines Ltd. HOLE NO. B # 2

Claim # S.134876, Cunningham Township
 SHEET NUMBER 1 SECTION FROM 0.0' TO 303' STARTED Sept. 13, 1967

~~XXXXXXXX~~ Hole Collar 540' south and 500' east of Post No. 4 DATUM _____ COMPLETED Sept. 17, 1967

~~XXXXXXXX~~ BEARING _____ ULTIMATE DEPTH 303'

ELEVATION _____ DIP -45° PROPOSED DEPTH _____

DEPTH FEET	FORMATION	SAMPLE NO.	WIDTH OF SAMPLE	GOLD \$	SLUDGE GOLD \$
0.0 - 23.0	Casing				
23.0 - 53.0	Chert, porcellaneous, massive, minor chlorite, leuco-xene, very sparse local pyrrhotite only and poss. a little f.gr. chalcopyrite with pyrratite				
53.0 - 72.0	Gst. amygd.				
72.0 - 100.0	Chert, parcellaneous, white to black colour. Some fract. and sp. pyrite. 86 - 92 SAMPLED, glossy chert & sp. pyrr.	#16			
100.0 - 154.0	Chert, black colour and much mixed "gst" tuffs(?) with minor arg. V. sparse pyrite in argillite sections where local släckensides, at 131' and 133', small streaks f.gr. chalcopyrite.				
154.0 - 195	Chert, mainly but increasing amounts of arg. bedding @ 45°.				
195.0 - 247	Arg. much sheared with graphite slips, local pyrr. and pyrite.				
247.0 - 303.0	Gst. or Diorite, Massive, fresh, f.gr. leuco-xene(?)				
303.0	END OF HOLE				

N.M.P., TORONTO-STOCK FORM NO. 501 REV. 12/51

DRILLED BY Continental Diamond Drilling Co.

CONSOLIDATED
 SHUNSBY MINES LIMITED
Franc. R. Joubin
 SIGNED _____
 Franc. R. Joubin, Geologist

DIAMOND DRILL RECORD

PROPERTY Consolidated Shunsby Mines Ltd.

HOLE NO. C

Claim S.134876, Cunningham Township

SHEET NUMBER 1

SECTION FROM 0.0' TO 118'

STARTED Sept. 8, 1967

~~XXXXXXXX~~ Hole collar, 230'

DATUM _____

COMPLETED Sept. 9, 1967

N 15° E of D.D.Hole

BEARING _____

ULTIMATE DEPTH 118'

~~XXXXXXXX~~ B #1

ELEVATION _____

DIP -45°

PROPOSED DEPTH _____

DEPTH FEET	FORMATION	SAMPLE NO.	WIDTH OF SAMPLE	GOLD \$	SLUDGE GOLD \$
0 - 25.0	Casing				
25.0 - 35.5	Chert and arg.in alternating 2' wide bands. Chert fract.and erratically mineralized, mainly pyrite and sparse phyr.				
31.0 - 35.0	Gst. Dyke Chert,porcellaneous, Arg.occas,mineralized, pyrite along schistosity 75°				
35.5 - 39.5	Core lost				
39.5 - 41.0	Chert,porcellaneous, rel.massive & glassy small blobs mass. pyrite				
41.0 - 45.0	Core lost				
45.0 - 52.0	Chert. Some fracturing with chlorite and sparse pyr.and phyr. Chert glassy to porcellaneous.				
52.0 - 55.0	Core lost				
55.0 - 62.0	Chert, some arg. Occas.sparse pyrite				
62.0 - 65.0	Core lost				
65.0 - 69.0	Chert, smoky black,fractured and fractured filled chlorite, Rare pyrite.				
69.0 - 70.0	Core lost				
70.0 - 74.0	Arg.minor chert, Cubic pyrite sparsely distributed along schistosity @ 75°				
74.0 - 76.0	Core lost				
76.0 - 77.0	Arg. minor chert as above				

~~77.0 - 79.0 Core lost~~ REV. 12/51

-continued-

DRILLED BY _____

SIGNED _____

Frank J. Paulus

DIAMOND DRILL RECORD

PROPERTY Consolidated Shunby Mines Ltd. HOLE NO. C continued
 Claim S.134876, Cunningham Township

SHEET NUMBER 2 SECTION FROM _____ TO _____ STARTED _____

LATITUDE _____ DATUM _____ COMPLETED _____

DEPARTURE _____ BEARING _____ ULTIMATE DEPTH _____

ELEVATION _____ DIP _____ PROPOSED DEPTH _____

DEPTH FEET	FORMATION	SAMPLE NO.	WIDTH OF SAMPLE	GOLD \$	SLUDGE GOLD \$
79.0 - 80.0	Chert, fractured, sparse pyrite				
80.0 - 81.0	Core lost				
81.0 - 90.0	Chert with much mixed arg. as shreddy streaks. Only occas. pyrite				
90.0 - 93.0	Core lost				
93.0 - 94.0	Chert, fract. oxid. From here to end (118°) bedding frags. cemented with hematite stgrs.				
94.0 - 95.5	Chert fragments only, sparse pyrite				
95.5 - 96.5	Core lost				
96.5 - 99.0	Chert, porcellaneous, fract. oxid. very sparse pyrite				
99.0 - 101.0	Core lost				
101.0 - 102.0	Chert, porcellaneous, fract. weakly oxid.				
102.0 - 104.0	Core lost				
104.0 - 105.0	Chert, porcellaneous, fract. slightly oxid.				
105.0 - 109.0	Core lost				
109.0 - 110.0	Chert and arg. sp. pyrite, one contact @ 80°				
110.0 - 111.0	Core lost				
111.0 - 112.0	Chert, porcellaneous, fract. weakly oxid.				
112.0 - 113.0	Core lost				
113.0 - 114.0	Chert, porcellaneous, massive sparse oxid.				
114.0 - 115.0	Core lost				
115.0 - 116.0	Chert frags. Sand. minor arg. or graph. sparse pyrite				
116.0 - 118.0	Core lost, Sand in return water				
118.0	END OF HOLE				

N.M.P., TORONTO—STOCK FORM NO. 501 REV. 12/51

DRILLED BY Continental Diamond Drilling Co.

CONSOLIDATED
 SHUNBY MINES LIMITED
 SIGNED Franc. A. Joubin, Geologist

DIAMOND DRILL RECORD

PROPERTY CONSOLIDATED SHUNSBY MINES LTD HOLE NO. 68-17

SHEET NUMBER 1 SECTION FROM _____ TO _____ STARTED Dec 5 1968
 LATITUDE L 17 40.5 NORTH GRID DATUM _____ COMPLETED Dec 6 1968
 DEPARTURE 10 + 65 E BEARING N 34 W ULTIMATE DEPTH 431.0'
 ELEVATION FROM POST LOCATED S10° W 430' CLS-147117 DIP -45° PROPOSED DEPTH _____

DEPTH FEET	FORMATION	SAMPLE NO.	WIDTH OF SAMPLE	GOLD g	SLUDGE GOLD g
0 - 9.0	Casing.				
9.0 - 19.0	Feldspar - Andesite Porphyry - grey greenish, crystalline indistinct mottled! probably andesite - thioite gradation.				
19.0 - 41.0	Diorite - Foot wall variety, med. gr. mottled. Grades from feldspar - andesite porphyry to andesite below.				
41.0 - 107.0	Andesite - Greenish, massive, faintly blotchy. 57.0 - 58.0 light grey porphyry intrusive, suggestion of argillite decolor. Altitud for 3.0 above 57.0 and 2.0' below 58.0'. Very dark fine grained diorite below 62.0'. Core broken and ground, sections rechecked to 107.0'				
107.0 - 210.0	Greenstone - variolitic - black on contact, amygd. uniformly scattered. Sections of 101.2 feet altitud to buff or purplish tinge. Core becomes green at about 140.0'; at 180.0' greenstone is hydrothermally altered to light dull green. Grades to chert breccia over 5.0'				

DRILLED BY Continental Diamond Drilling

SIGNED William Haska

DIAMOND DRILL RECORD

PROPERTY CONSOLIDATED SHANBY MINES LTD HOLE NO. 68-17

SHEET NUMBER 2 SECTION FROM _____ TO _____ STARTED Dec 3 1968
 LATITUDE L 17 + 40 S DATUM _____ COMPLETED Dec 6 1968
 DEPARTURE 10 + 65 E BEARING N 34 W ULTIMATE DEPTH 431.0'
 ELEVATION _____ DIP -45° PROPOSED DEPTH _____

DEPTH FEET	FORMATION	SAMPLE NO.	WIDTH OF SAMPLE	GOLD \$	SLUDGE GOLD \$
210.0 - 265.0	Chert Breccia - Dark matrix and dark chert fragments, brecciation coarse, very sparse pyrr and str. py., little dissemin sphal at 254.0 and specks py at 255.0.				
	SAMPLE - 609-252.0-255.0 - Coarse chert with py ASSAYED; CU. 0.10 ZN. 0.27				
265.0 - 288.0	Andesite - Dark blotchy green, altered slightly with chert contact, contains chert fragments partially absorbed. 2.0' section appears like digressive diorites. After 282.0 greenish components become darker. Increase in undefined qty stringers				
288.0 - 350.0	Argillite - Silicified, almost black, large chert fragments 2 or 3 ins in size, many undefined qty stringers. Varies in compactness, black to dark grey. Hairline fractures mineralized from 340.0 by py. Black sections have minute specks of pyrr and pyrr. Increase in py and pyrr between 340.0 - 348.0				
350.0 - 400.0	Chert Breccia - variable. From 350.0 - 360.0 with greenish matrix and banded. To 369.0 massive blue chert				

DRILLED BY Continental Diamond Drilling

SIGNED William Hesler

DIAMOND DRILL RECORD

PROPERTY CONSOLIDATED SHUNSBY MINES LTD HOLE NO. 68-17

SHEET NUMBER 3 SECTION FROM _____ TO _____ STARTED 3/12/68
 LATITUDE L17+40 S DATUM _____ COMPLETED 6/12/68
 DEPARTURE 107 65 E BEARING N 34 W ULTIMATE DEPTH 431.0'
 ELEVATION _____ DIP -45° PROPOSED DEPTH _____

DEPTH FEET	FORMATION	SAMPLE NO.	WIDTH OF SAMPLE	GOLD \$	SLUDGE GOLD \$
	To 374.0 chert breccia	To 388.0			
	To 393.0 Argillite banded by py and chert or qtz.				
	To 401.0 black chert with qtz and py and pyrrh banding.				
401.0 - 403.0	Intermediate Basic Intrusive - light greenish, aphanitic				
403.0 - 415.0	Fault Zone - Argillite - chert - schistose sheared, contorted with massive qtz str. and blebs to 409.0. followed by arg. and qtz with sheared basic rock. Some blebs and stringers of py and specks of epy. Sample 1810 - 410.0 - 415.0 Fault Zone Arg-chert-And. ASSAYED: Cu 0.03 Zn: 0.99				
415.0 - 431.0	Andesite - altered near fault area, more defined downward. Crystals forming to diorite but not completely formed, becoming coarser downward. Grades to coarse feldspar - Andesite porphyry.				
431.0	End of Hole				

DRILLED BY Continental Diamond Drilling

SIGNED William Meskela

#68-17

Diamond Drill Record
 CONSOLIDATED SHUNSEY MINES LIMITED

HOLE No. 68-17

Latitude: 2000' E. of Baseline # 1
 L 17+50 S (N.Grid)

Started: Dec. 3, 1968
 Completed: Dec. 6, 1968

Bearing: N 34 W

Cl. #114 402

Dip: 45°

Ultimate Depth: 431 ft.

Depth Feet	Description	Sample No.	Width	Cu	Zn	Pb
0.0 - 9.0	Casing					
9.0 - 19.0	Diorite - Andesite porphyry phase of normal F.W. diorite; grey greenish, crystals indistinct, mottled, probably Andesite porphyry-diorite gradation.					
19.0 - 41.0	Diorite - Footwall variety, med.gr. mottled, grades from Fels.And. porphyry to Andesite below					
41.0 - 107.0	Diorite - Fine grained andesite phase; greenish, massive, faintly blotchy, 57.0 - 58.0 light grey porphyry intrusive, suggestive of dig.diorite. Alter. for 3.0' above 57.0 and 2.0' below 58.0. Very dk. fine grained diorite below 62.0'. Core broken and ground, sections schistosed to 107.0'. Fault Zone from 98.0 - 107.0'.					
107.0 - 210.0	Greenstone, variolitic - black on contact, amyg. uniformly spread, short sections 1 or 2 ft. altered to buff or purplish tinge. Core becomes green at abt. 140.0'. At 185.0 greenstone is hydrothermally altered to light dull green. Grades to chert breccia over 5.0'					
210.0 - 265.0	Chert Breccia - Dark matrix and dark chert fragments brecciation coarse, very sparse pyrr. and str. py., little dissem. sphal. at 254.0 and specks cpy. at 255.0. SAMPLE: 252.0 - 255.0 Coarse chert with band py.	609	3.0'	0.10	0.27	
265.0 - 288.0	Andesite - Dark blotchy green, altered a little w/chert contact contains chert fragments partially absorbed. 2.0' section appears like dig.diorite. After 282.0 greenish component becomes darker, increase in undefined qtz.stringers.					
288.0 - 350.0	Argillite - silicified, almost black, large chert fragments 2 or 3" in size. Many undefined qtz.stringers. Varies in compactness, jet black to dark grey. Hairline fractures mineralized from 340.0 but pyrite black sections have minute specks of pyritic pyrr. Increase in pyrite + pyrr. between 340.0 - 348.0.					

Fw. d

d

d

su V.

bc.

dig?

bc (+A).

#68-17

Diamond Drill Record
CONSOLIDATED SHUNSBY MINES LIMITED

HOLE No. 68-17
-contd

PAGE 2.

Depth Feet	Description	Sample No.	Width	Cu	Zn	Pb
350.0 - 401.0	Chert -variable- From 350.0 to 360.0 w/greenish matrix, banded to 369.0 massive blue chert. To 374.0 chert breccia. To 388.0 dark dull chert. To 393.0 argillite banded by py. and chert qtz. To 401.0 black chert with qtz. and py. (pyrr) banding		BC			
401.0 - 403.0	Intermediate basic intrusive - light greenish, aphanitic.		like			
403.0 - 415.0	Fault Zone - Argillite-chert - schistosed sheared, contacted with massive qtz. str. and blebs to 409.0. Then arg. and qtz. with sheared basic rock, some blebs and str. of py. and specks of cpy. This is usual F.W. bedded fault? SAMPLE: 410.0 - 415.0 Fault zone. arg. chert and qtz.	610	5.0'	0.03	0.19	
415.0 - 431.0	Andesite - Altered at fault area, more defined downward, crystals forming to diorite but not completely formed, becoming coarser downward. Grades to feldspar; coarse andesite porphyry.		d?			
END OF HOLE						

Drilled by: Continental Diamond Drilling Co.

Signed: "William Heshka"

lat 2000' E of #4
 dep L 174505 (N-grid)
 depth. 431'

brng N34°W
 dip 45°
 (3-6) Occ 268

DDH. 68-17

0 - 9 Casing

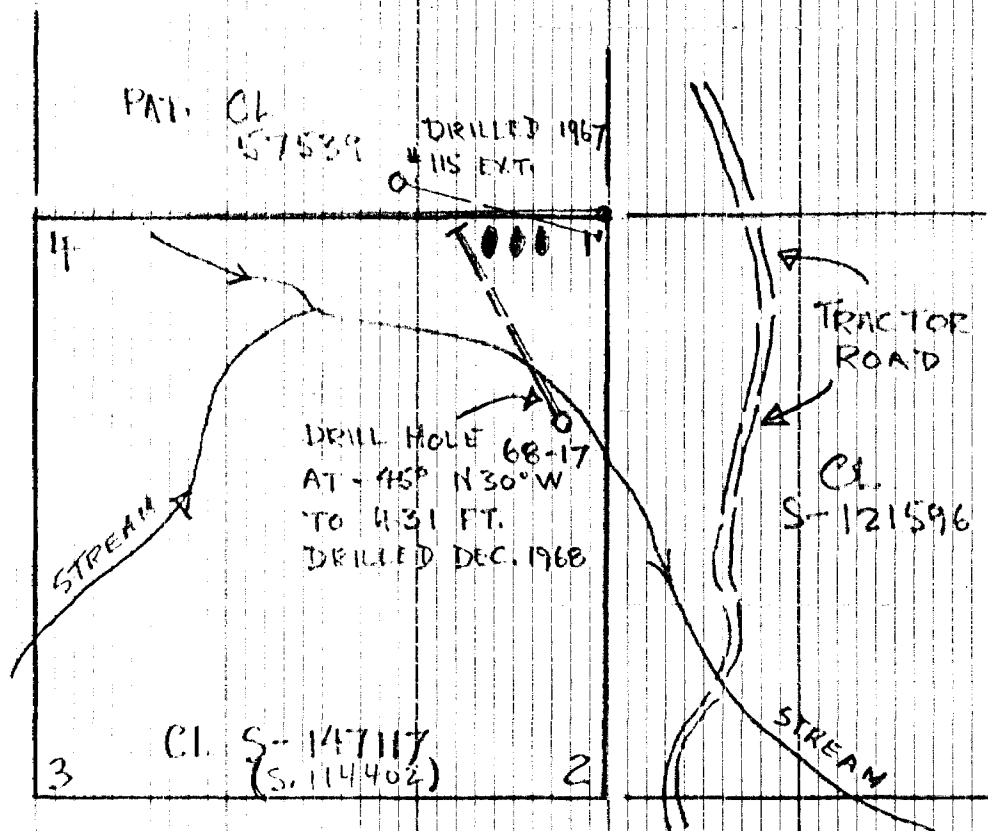
98	10	9 - 19	Diorite	andesite π phase of normal F.W. diorite	
		22	19 - 41	Diorite	textural variety m.g. mottled felsic andesite above andesite below.
			41 - 107	Diorite	f.g. andesite <u>fault zone</u> (98-107)
	66	107 - 210	Greenstone	variolitic (uniform amygdule distribution)	
		210 - 265	Chert breccia	grades to chert breccia over 5 ft.	
			265 - 288	Andesite	dk. blotchy green. downward increase in undefined qtz. stringers
		288 - 350	Argillite	many undefined qtz stringers variable compaction.	
		350 - 401	Chert	350-360 = gn. matrix \rightarrow 369 massive bl. chert \rightarrow 374 chert. brecc. \rightarrow 393 argill.	
		401 - 403	Intermediate basic Intensive	lt. green aphanitic \rightarrow 401 blk. chert.	
		403 - 415	Argillite-Chert	<u>Fault Zone</u> .	
		415 - 431	Andesite	fr. changes downward to diorite ξ c.g. fo. andesite π	

Asst. 17

			Cu	Zn	Pb
252 - 255	= 609	5	0.10	0.27	
	=				
410 - 415	= 610	5	0.03	0.15	



SCALE
1" = 400'

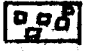

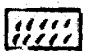


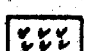

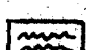


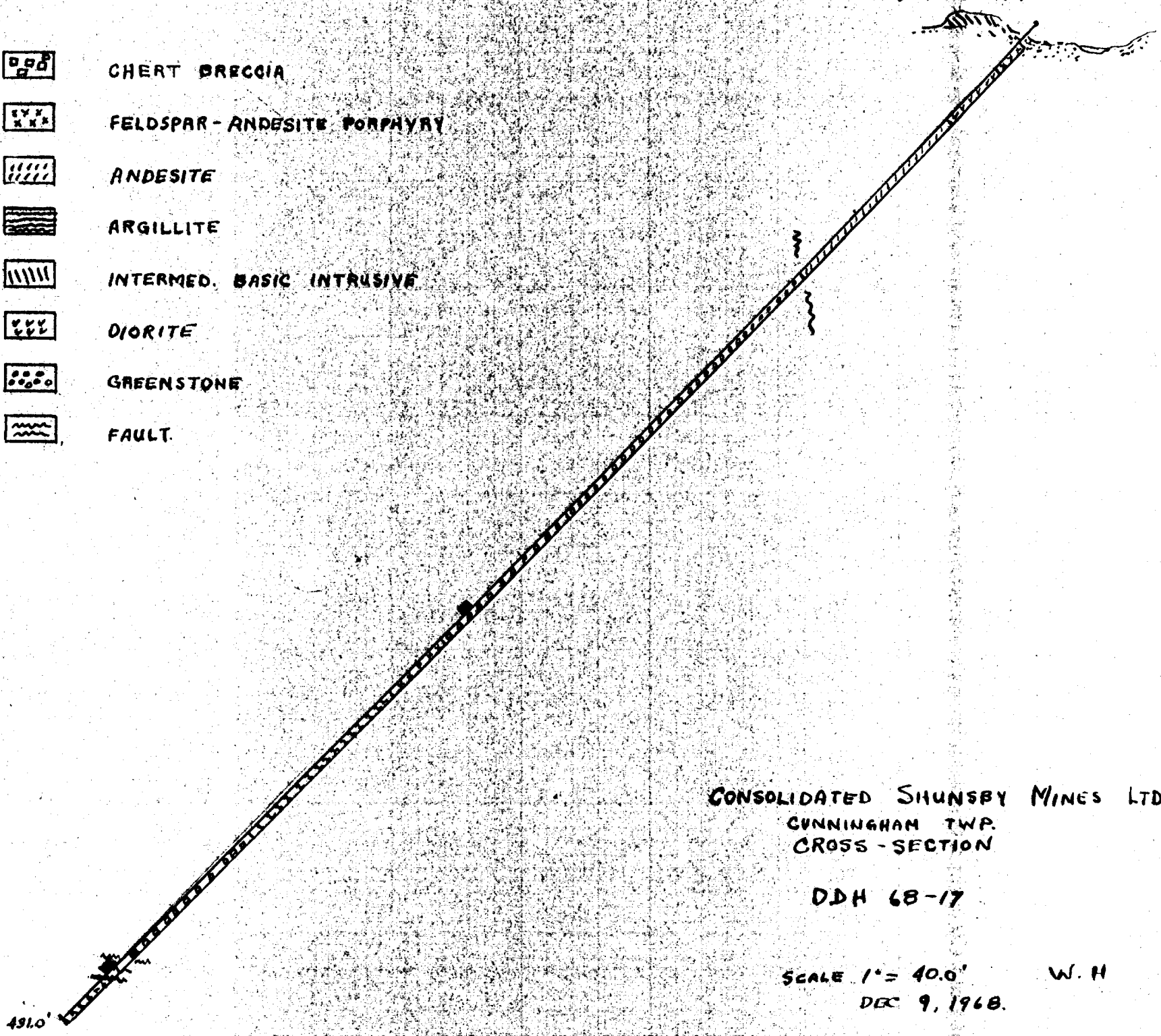
PLAN
DRILL HOLE 68-17, CLAIM 147117
CUNNINGHAM TWP.

LOCATION	S 10° W	430'	FROM	POST No 1
	CLAIM	S-147117		
BEARING	N 39° W	AT	-45°	
LENGTH	431'	CORE SIZE	AXT (1 1/4")	

A.R. JOUBIN.
P. ENG.

DDH 68-17

-  CHERT BRECCIA
-  FELDSPAR-ANDESITE PORPHYRY
-  ANDESITE
-  ARGILLITE
-  INTERMED. BASIC INTRUSIVE
-  DIORITE
-  GREENSTONE
-  FAULT.



CONSOLIDATED SHUNSBY MINES LTD
 CUNNINGHAM TWP.
 CROSS-SECTION

DDH 68-17

SCALE 1" = 40.0' W. H
 DEC 9, 1968.