

DIAMOND DRILLII



41010NW0047 24 TOOMS

010

TOWNSHIP: Tooms

REPORT NO.: 24

WORK PERFORMED BY: Quinterra Resources Inc.

<u>CLAIM No.</u>	<u>HOLE No.</u>	<u>FOOTAGE</u>	<u>DATE</u>	<u>NOTE</u>
P 648671	SC-17	500	Oct/83	(1)
P 630748	SC-18	500	Oct/83	(1)

NOTES: (1) #369-84



Drilling Company <b>Norex Drilling Ltd.</b>		Collar Elevation	Bearing of hole from true North <b>S50W</b>	Total Footage <b>500 ft.</b>	Dip of Hole at Collar   <b>45</b>	Location of hole in relation to a fixed point on the claim.  <b>3330E 1600N 500'S and 270'W of #1 post of P63078</b>	Map Reference No.	Claim No. <b>P63078</b>		
Date Hole Started <b>Oct. 25, 1983</b>	Date Completed <b>Oct. 28, 1983</b>	Date Logged <b>Nov. 9/83</b>	Logged by <b>W. O. Karvinen</b>		<b>500 ft.   58</b>		Location (Twp., Lot, Con. or Lat. and Long.)  <b>Tooms Township</b>	Property Name <b>Sylvanite Creek</b>		
Exploration Co. Owner or Optionee  <b>Quinterra Resources Inc.</b>		Date Submitted <b>Sept 7/84</b>	Submitted by (Signature) <i>Ray Lastbrook</i>		ft.					
					ft.					

Footage		Rock Type	Description Colour, grain size, texture, minerals, alteration, etc.	Planar Feature Angle *	Core Specimen Footage †	Your Sample No.	Sample Footage		Sample Length	Assays †	
From	To						From	To		Au	
0	8'	overburden								ppb	
8'	370'	mafic tuff	- chloritic, greenish black; massive to foliated, - barren qtz veinlets, some red "granitic" veins and larger qtz-carb. veins with little py in walls								
			8' - 46' -as above; foliation 60° to C.A								
			46' - 48' -diss. py ( 1% ) with some bleaching								
			48' - 64' -chloritic mafic tuff								
			64' - 66' -two qtz carb veins (4" and 5" wide) with some py in walls			60633	64'	66'	2'	4	
			66' - 71' -massive to foliated mafic tuff								
			71' - 73' -alteration and pyritization nearly parallel to C.A. (2% py); no veins								
			73' - 120' -massive and foliated mafic tuff; zones of qtz.-carb. veinlets with some py; diss. py in some sections								
			120' - 123' -bleached, sericitic, thinly-bedded tuff (at 20° to C.A.); thin crumpled chert bed at 121'; diss. py 1%; carb veining			60634	120'	123'	3'	14	
			123' - 146' -mafic, chloritic tuff; few barren veinlets								
			146' - 149' -four qtz-carb. veins, 1" to 4" wide, with hematitic and pyritic walls			60635	146'	149'	3'	23	

*Ray Lastbrook  
Sept 7/84*



Drilling Company <b>Norex Drilling Ltd.</b>		Collar Elevation	Bearing of hole from true North <b>S50W</b>	Total Footage <b>500 ft.</b>	Dip of Hole at Collar <b>45</b>	Location of hole in relation to a fixed point on the claim.  <b>3330E 1600N 500'S and 270'W of #1 post of P63078 P630748</b>	Map Reference No.	Claim No. <b>P63078</b>
Date Hole Started <b>Oct. 25, 1983</b>	Date Completed <b>Oct. 28, 1983</b>	Date Logged <b>Nov. 9/83</b>	Logged by <b>W. O. Karvinen</b>		<b>500 ft. 58</b>		Location (Twp., Lot, Con. or Lat. and Long.)  <b>Tooms Township</b>	
Exploration Co., Owner or Optionee  <b>Quinterra Resources Inc.</b>		Date Submitted	Submitted by (Signature)		<b>ft.</b>			
					<b>ft.</b>			
							Property Name <b>Sylvanite Creek</b>	

Footage		Rock Type	Description <small>Colour, grain size, texture, minerals, alteration, etc.</small>	Placer Feature Angle *	Core Specimen Footage †	Your Sample No.	Sample Footage		Sample Length	Assays ‡	
From	To						From	To		Au	
			149' - 150' - mafic tuff							ppb	
			150' - 153' - hematitic and bleached zones with little qtz veining in tuff; diss. py 2%			60636	150'	153'	3'	43	
			153' - 154' - mafic tuff								
			154' - 155' - 6" qtz-carb vein with py in bleached walls;			60637	154'	155'	1'	104	
			155' - 156' - mafic tuff								
			156' - 158' - 1" qtz vein with bleaching and diss. py			60638	156'	158'	2'	0.02	oz/ton
			158' - 172' - mafic tuff; some barren veinlets								
			172' - 198' - carbonatized mafic tuff								
			198' - 200' - qtz-carb veins (1/4" to 1") with bleached, pyritic walls (1% py)			60639	198'	200'	2'	163	
			200' - 204' - mafic tuff with barren white qtz veins up to 2" wide								
			204' - 209' - mafic tuff with concordant qtz-ankerite veinlets; bleached walls; diss. py (1%)			60640	204'	209'	5'	236	
			209' - 214' - same, more bleaching; diss. py (2%)			60641	209'	214'	5'	261	
			214' - 232' - carbonatized tuff with slumping and contorted folding; some barren white qtz veins								

703 (02/78)

\* For features such as foliation, bedding, schistosity, measured from the long axis of the core.

† Additional credit available. See Assessment Work Regulations.

Ray Lashford  
Sept 2/84

Drilling Company Norex Drilling Ltd.		Collar Elevation	Bearing of hole from true North S50W	Total Footage 500 ft.	Dip of Hole at Collar 45	Location of hole in relation to a fixed point on the claim.  3330E 1600N 500'S and 270'W of #1 post of P63078 P630748	Map Reference No.	Claim No. P63078
Date Hole Started Oct. 25, 1983	Date Completed Oct. 28, 1983	Date Logged Nov. 9/83	Logged by W. O. Karvinen	500 ft.	58		Location (Twp., Lot, Con. or Lat. and Long)  Tooms Township	Property Name Sylvanite Creek
Exploration Co., Owner or Options  Quinterra Resources Inc.		Date Submitted	Submitted by (Signature)	ft.				
				ft.				

Footage		Rock Type	Description <small>Colour, grain size, texture, minerals, alteration, etc.</small>	Planar Feature Angle *	Core Specimen Footage †	Your Sample No.	Sample Footage		Sample Length	Assays †	
From	To						From	To		Au	
			232' - 237' -qtz veins in silicified, pyritic bleached tuff; some black tourmaline in qtz vein at 232; contorted bedding;			60642	232'	237'	5'	66	
			237' - 241' -same with py (1%)								
			241' - 257' -fine-gr. tuff; some bleaching and veining, little py								
			257' - 292' -carbonatized mafic tuff; crenulated to contorted layering; folded lenses of gray, barren chert?; little to no sulfides								
			292' - 296' -mafic tuff with qtz-carb veining, bleached rock and diss. py (1%)								
			296' - 298' -bleached mafic tuff with diss. py (1%) and qtz veins (10%)			60643	296'	298'	2'	10	
			298' - 337' -mildly bleached, fine-gr., foliated to massive, mafic tuff; some qtz-pink vuggy calcite veins up to 1"; tr. py								
			337' - 360' -med. to coarse-grained, carbonatized tuff; contorted layering with qtz lenses; traces of pyrite								
			360' - 364' -qtz-carb veins (30%) in a partly bleached, carb. mafic tuff; py (%)			60644	360'	364'	4'	148	
			364' - 370' -mafic tuff; some vuggy qtz-calcite veinlets								
370'	417'	carbonatized basalt	370' - 417' -massive, med.-gr. gray-green basaltic flows with chloritic tuff interflows; few barren veinlets								

783 (8/7/1)

\* For features such as foliation, bedding, schistosity, measured from the long axis of the core.

† Additional credit available. See Assessment Work Regulations.

Ray Lamb  
 Sept 2/84



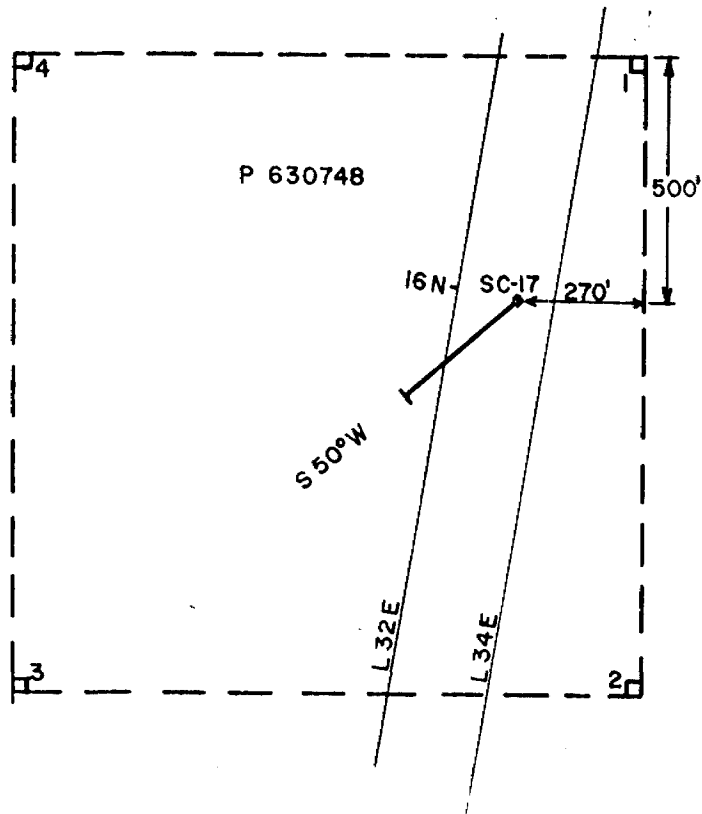
Drilling Company <b>Norex Drilling Ltd.</b>		Collar Elevation	Bearing of hole from true North <b>S50W</b>	Total Footage <b>500 ft.</b>	Dip of Hole at Collar <b>45</b>		Location of hole in relation to a fixed point on the claim.  <b>3330E 1600N 500'S and 270'W of #1 post of P63078 PC30748</b>	Map Reference No.	Claim No. <b>P63078</b>	
Date Hole Bored <b>Oct. 25, 1983</b>	Date Completed <b>Oct. 28, 1983</b>	Date Logged <b>Nov. 9/83</b>	Logged by <b>W. O. Karvinen</b>		500 ft.   58			Location (Twp., Lot, Con. or Lat. and Long.)  <b>Tooms Township</b>	Property Name <b>Sylvanite Creek</b>	
Exploration Co., Owner or Optionee  <b>Quinterra Resources Inc.</b>		Date Submitted	Submitted by (Signature)		ft.				ft.	
					ft.					

Footage		Rock Type	Description <small>Colour, grain size, texture, minerals, alteration, etc.</small>	Planar Feature Angle †	Core Specimen Footage †	Your Sample No.	Sample Footage		Sample Length	Assays †	
From	To						From	To		Au	
417'	500'	carbonatized mafic/ultramafic rock	- black, massive to foliated, becoming gray in color at 430'; some qtz veinlets; rock is carbonatized and silicified; little to no sulfides							ppb	
			470' - 472' -5" qtz-carb. vein with diss. py (1%); also some fuchsite			60645	470'	472'	2'	82	
			422' - 473' -mafic tuff; barren qtz vein (2")								
			473' - 477' -qtz veins up to 2" wide in well-silicified and bleached tuff; py from 3-5%; some vugry calcite			60646	473'	477'	4'	0.01	oz/ton
			477' - 500' -greenish-black, chloritic tuff with 10% barren qtz-carb. veinlets -hematitic zone at 499-500 ft.								
500'		end of hole									

\* For features such as foliation, bedding, schistosity, measured from the long axis of the core.

† Additional credit available. See Assessment Work Regulations.

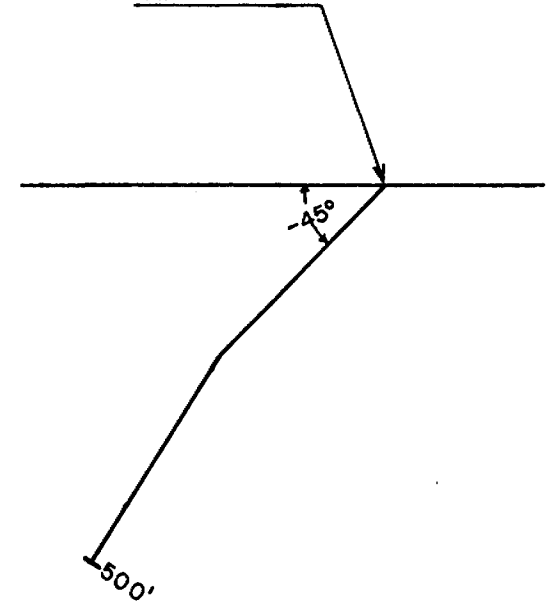
Ray Ladd  
Sept 7/84



D.D.H. SC-17  
S 50° W, -45°  
1" = 400'  
TOOMS TWP

PLAN

SC-17  
500'S, 270'W of Post 1  
Cl. P630748



1" = 200'

SECTION  
LOOKING N40°W

*Ray Lashbrook*  
*Sept 7/84*

Drilling Company <b>Norex Drilling Ltd.</b>		Collar Elevation	Bearing of hole from True North <b>S30W</b>	Total Footage <b>500 ft.</b>	Dip of Hole at Collar <b>45</b>	Location of hole in relation to a fixed point on the claim.  <b>2400N on 7600E 720'N and 100'E of #3 post of claim P648671</b>	Map Reference No.	Claim No. <b>P648671</b>
Date Hole Started <b>Oct. 31, 1983</b>	Date Completed <b>Nov. 4, 1983</b>	Date Logged <b>Nov. 9/83</b>	Logged by <b>W. O. Karvinen</b>		<b>500 ft.   53</b>		Location (Twp., Lot, Con. or Lat. and Long.)  <b>Tooms Township</b>	Property Name <b>Sylvanite Creek</b>
Exploration Co., Owner or Optionee  <b>Quinterra Resources Inc.</b>		Date Submitted <b>Sept 7/84</b>	Submitted by (Signature) <i>Ray Lashbrook</i>		<b>ft.  </b>			
					<b>ft.  </b>			

Footage		Rock Type	Description Colour, grain size, texture, minerals, alteration, etc.	Planar Feature Angle*	Core Specimen Footage †	Your Sample No.	Sample Footage		Sample Length	Assays †	
From	To						From	To		Au	
0	50'	overburden								ppb	
50'	197'	carbonatized ultramafic rocks	- gray to black, massive to slightly foliated; rock is now mainly calc, carbonate and chlorite; relict olivines and pyroxenes in places; tuffaceous sections as well; 10% contorted barren qtz-carbonate veins								
			50' - 147'6" -as described above								
			147'6"-151' -thinly bedded, chloritic tuff and chert with qtz veins and massive pyrite sections up to 2" long; bedding at 90° to C.A. - 80% qtz in vein from 149'6" to 151' -some ankerite in vein as well as cubic py -total pyrite content 3%			60611	147'6"	151'	3'6"	836	0.026 oz.
			151' - 154' -layered, carbonatized ultramafic tuff; gray to black in color								
			154' - 157' -thinly layered carbonatized tuff with diss. py (½) and qtz veinlets up to ½" at 80° to C.A.								
			157' - 197' -carbonatized ultramafic tuffs								
197'	293'	mafic tuff (with minor ultramafic tuff)	- gray-green, fine-grained, layered to foliated with lean magnetic chert iron formation sections; layering at 80° to C.A. - also gray to black chloritic ultramafic tuff								
			197' - 201' -well-bedded chert and tuff with magnetite-rich sections (10%); some diss. pyrite (½)			60613	197'	201'	4'	40	

\* For features such as foliation, bedding, schistosity, measured from the long axis of the core.

† Additional credit available. See Assessment Work Regulations.

*Ray Lashbrook*  
Sept 7/84



Drilling Company Norex Drilling Ltd.		Collar Elevation	Bearing of hole from true North S30W	Total Footage 500 ft.	Dip of Hole at Collar 45	Location of hole in relation to a fixed point on the claim.  2400N on 7600E 720'N and 100'E of #3 post of claim P648671	Map Reference No.	Claim No. P648671
Date Hole Started Oct. 31, 1983	Date Completed Nov. 4, 1983	Date Logged Nov. 9/83	Logged by W. O. Karvinen		500 ft.   53		Location (Twp., Lot, Con. or Lat. and Long.)  Tooms Township	Property Name Sylvanite Creek
Exploration Co. Owner or Optionee Quinterra Resources Inc.		Date Submitted	Submitted by (Signature)		ft.			
					ft.			

Footage		Rock Type	Description Colour, grain size, texture, minerals, alteration, etc.	Placer Feature Angle *	Core Specimen Footage †	Your Sample No.	Sample Footage		Sample Length	Assays †	
From	To						From	To		Au	ppb
			201' - 204' -same			60614	201'	204'	3'	4	
			204' - 215' -mafic-ultramafic lapilli tuff; no sulfides								
			215' - 218' -mafic tuff, thin chert beds and qtz veinlets up to 1/2" at various angles to C.A.; 1/2% py			60615	215'	218'	3'	192	
			218' - 223' -mafic tuff with some thin chert beds; few sulfides								
			223' - 228' -mafic tuff with thin chert beds; diss. py 1% bedding at 80° to C.A.; some chert beds up to 2 inches			60616	223'	228'	5'	116	
			228' - 233' -same; thin chert beds; diss. py (1/2%)			60617	228'	233'	5'	123	
			233' - 238' -same			60618	233'	238'	5'	153	
			238' - 240' -same			60619	238'	240'	3'	220	
			240' - 247' -mafic-ultramafic lapilli tuff								
			247' - 251' -mafic tuff, chert beds (1/2" to 2") with py (1%) and magnetite (10%); bedding at 75° to C.A.			60620	247'	251'	4'	280	
			251' - 254' -mafic tuff								
			254' - 257' -some chert beds with py at 254'; then mafic tuff with gray qtz-ankerite zone; diss. py (1/2%)			60621	254'	257'	3'	342	
			257' - 277' -mafic tuff								

\* For features such as foliation, bedding, schistosity, measured from the long axis of the core.

† Additional credit available. See Assessment Work Regulations.

Ray Goodbridge  
Sept 7/84



Drilling Company <b>Norex Drilling Ltd.</b>		Collar Elevation	Bearing of hole from true North <b>S30W</b>	Total Footage <b>500 ft.</b>	Dip of Hole at Collar <b>45</b>	Location of hole in relation to a fixed point on the claim.  <b>2400N on 7600E 720'N and 100'E of #3 post of claim P648671</b>	Map Reference No.	Claim No. <b>P648671</b>	
Date Hole Started <b>Oct. 31, 1983</b>	Date Completed <b>Nov. 4, 1983</b>	Date Logged <b>Nov. 9/83</b>	Logged by <b>W. O. Karvinen</b>		<b>500 ft.   53</b>		Location (Twp., Lot, Con. or Lat. and Long.)  <b>Tooms Township</b>		
Exploration Co., Owner or Optionee  <b>Quinterra Resources Inc.</b>		Date Submitted	Submitted by (Signature)				Property Name <b>Sylvanite Creek</b>		

Footage		Rock Type	Description <small>Colour, grain size, texture, minerals, alteration, etc.</small>	Placer Feature Angle*	Core Specimen Footage †	Your Sample No.	Sample Footage		Sample Length	Assays ‡	
From	To						From	To		Au	
			<b>277' - 282' - mafic tuff and reddish chert-carb beds up to 3" thick with 3% py in places</b>			<b>60622</b>	<b>277'</b>	<b>282'</b>	<b>5'</b>	<b>321</b>	
			<b>282' - 285' - carbonatized ultramafic (talc-carb)</b>								
			<b>285' - 290' - reddish chert-carb beds up to 2" in carb mafic tuff; diss. py 1%</b>			<b>60623</b>	<b>285'</b>	<b>290'</b>	<b>5'</b>	<b>164</b>	
			<b>290' - 293' - thin chert beds and carb mafic tuff; few sulfides</b>								
<b>233'</b>	<b>351'</b>	<b>carbonatized ultramafic rock</b>	<b>- gray to black, talc-carbonate rock; foliated to massive; barren qtz-carb veinlets common; minor talc-carb tuffs</b>								
<b>351'</b>	<b>395'</b>	<b>carbonatized mafic tuff and chert</b>	<b>- gray carb tuff with reddish qtz-carb veinlets ( 20%) and gray chert layers ( 1/4"); diss. py ( 1%)</b>								
			<b>351' - 353'6" - 7" white qtz vein grading into gray qtz-carbonate with diss py ( 1%); some carb tuff</b>			<b>60624</b>	<b>351'</b>	<b>353'6"</b>	<b>2'6"</b>	<b>186</b>	
			<b>353'6"-359' - carb tuff cut by numerous reddish qtz-ankerite veinlets (1/4 to 3/4") with diss py 1%; 20% veins</b>			<b>60625</b>	<b>353'6"</b>	<b>359'</b>	<b>5'6"</b>	<b>127</b>	
			<b>359' - 364' - same</b>			<b>60626</b>	<b>359'</b>	<b>364'</b>	<b>5'</b>	<b>79</b>	
			<b>364' - 367'4" - same</b>			<b>60627</b>	<b>364'</b>	<b>367'4"</b>	<b>3'4"</b>	<b>185</b>	
			<b>367'4"-376' - altered ultramafic tuff; now a talc-chlorite rock; layering at 60° to C.A.</b>								
			<b>376' - 379' - carb. tuff with concordant qtz-ankerite qtz veinlets and pink walls; diss. py 5%</b>			<b>60628</b>	<b>376'</b>	<b>379'</b>	<b>3'</b>	<b>56</b>	

\* For features such as foliation, bedding, schistosity, measured from the long axis of the core.

† Additional credit available. See Assessment Work Regulations.

*Ray Lushbrook  
Sept 7/84*

Drilling Company <b>Norex Drilling Ltd.</b>		Collar Elevation	Bearing of hole from true North <b>S30W</b>	Total Footage <b>500 ft.</b>	Dip of Hole at Collar <b>45</b>	Location of hole in relation to a fixed point on the claim.  <b>2400N on 7600E 720'N and 100'E of #3 post of claim P648671</b>	Map Reference No.	Claim No. <b>P648671</b>
Date Hole Started <b>Oct. 31, 1983</b>	Date Completed <b>Nov. 4, 1983</b>	Date Logged <b>Nov. 9/83</b>	Logged by <b>W. O. Karvinen</b>		<b>500</b> ft.   <b>53</b>		Location (Twp., Lot, Con. or Lat. and Long.)  <b>Tooms Township</b>	Property Name <b>Sylvanite Creek</b>
Exploration Co., Owner or Optionee  <b>Quinterra Resources Inc.</b>		Date Submitted	Submitted by (Signature)		ft.			
					ft.			

Footage		Rock Type	Description <small>Colour, grain size, texture, minerals, alteration, etc.</small>	Planar Feature Angle*	Core Specimen Footage†	Your Sample No.	Sample Footage		Sample Length	Assays †	
From	To						From	To		Au	
			379' - 386' -carb. ultramafic tuff, barren qtz-carb veinlets							ppb	
			386' - 388' -carb. mafic tuff with concordant qtz veins 1/2" to 1" thick; pyritic walls (3%)			60629	386'	388'	2'	96	
			388' - 393' -carb. tuff, chert beds (1/2" to 3" thick), massive to diss. pyrite (10%) and diss. magnetite (5%); can be classed as dirty lean iron formation; magnetic			60630	388'	393'	5'	932	0.027oz/cn
			393' - 394' -massive carb mafic tuff								
			394' - 395' -carb. tuff with bleached silicified zone (4") carrying 1% diss. py			60631	394'	395'	1'	118	
395'	500'	carbonatized ultramafic and mafic tuff	- gray to fuchsitic-green, carbonatized and silicified; no talc; mainly carbonate, chlorite and qtz; - qtz-ankerite veins up to 2" thick ( 20%)								
			406' - 410' -section of veins, 1/2" to 2" thick; few sulfides; 20% veins; some green carbonate -foliated at 80° to C.A., some barren veinlets; gray-green color; some bleached siliceous zones			60632	406'	410'	4'	96	
			422' - 423'6" -reddish-brown lamprophyre sill; no sulfides								
			427' -hematitic zone -6"								
			433' - 434' -narrow reddish lamprophyre								
			448' - 449' -1" qtz vein with nearly veinlets and some pyrite in hematitic walls								

83 (82/71) \* For features such as foliation, bedding, schistosity, measured from the long axis of the core.

† Additional credit available. See Assessment Work Regulations.

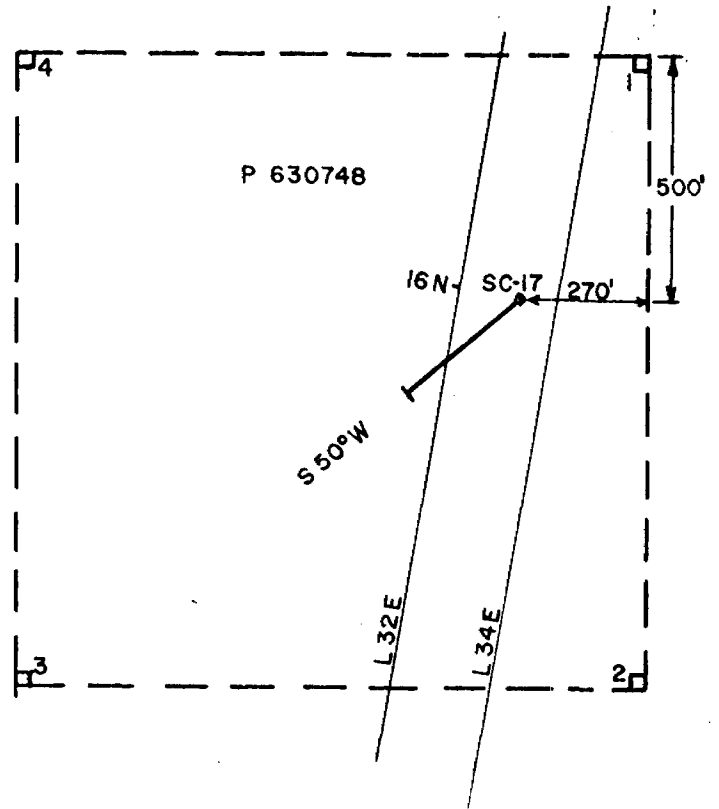
*Ray Washbrook  
Sept 7/84*

Drilling Company Norex Drilling Ltd.		Collar Elevation	Bearing of hole from true North S30W	Total Footage 500 ft.	Dip of Hole at Collar 45	Location of hole in relation to a fixed point on the claim.  2400N on 7600E 720'N and 100'E of #3 post of claim P648671	Map Reference No.	Claim No. P648671
Date Hole Started Oct. 31, 1983	Date Completed Nov. 4, 1983	Date Logged Nov. 9/83	Logged by W. O. Karvinen		500 ft.   53		Location (Twp., Lot, Con or Lat. and Long.)  Tooms Township	Property Name Sylvanite Creek
Exploration Co., Owner or Optionee Quinterra Resources Inc.		Date Submitted	Submitted by (Signature)		ft.			
					ft.			

Footage From	Footage To	Rock Type	Description Colour, grain size, texture, minerals, alteration, etc.	Planar Feature Angle *	Core Specimen Footage †	Your Sample No.	Sample Footage		Sample Length	Assays ‡	
							From	To		Au	
			449' - 472' -gray carbonatized mafic and ultramafic tuffs							ppb	
			472' - 476' -carb. mafic tuff with numerous concordant qtz-carb. veinlets with hematitic and pyritic walls (1% py); well layered at 75° to C.A.			60647	472'	476'	4'	247	
			476' - 480' -carb. mafic tuff, few veinlets								
			480' - 485' -abundant qtz-carb. vein material (50%) in carb mafic tuff; some hematitic sections			60648	480'	485'	5'	180	
			-480'-482' -solid qtz vein with py in chloritic inclusions								
			-484'-485' -same								
			485' - 486' -carb mafic tuff								
			486' - 487' -qtz-carb. vein with 1% py			60649	486'	487'	1'	0.011 oz/ton	
			487' - 500' -gray, carbonatized ultramafic tuff -barren qtz. veins up to 3" at 494' and 496'								
500'		end of hole									

§ 102/11 \* For features such as foliation, bedding, schistosity, measured from the long axis of the core. † Additional credit available. See Assessment Work Regulations.

Ray Goodwin  
Sept 21/84



P 630748

16N SC-17 270'

500'

S 50°W

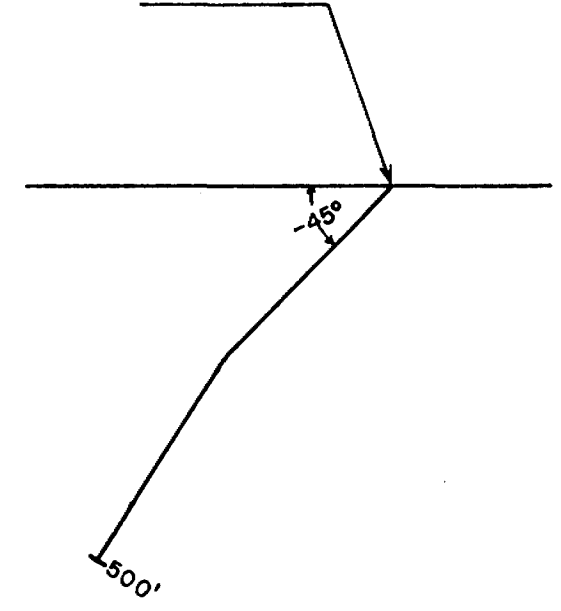
L 32E

L 34E

D.D.H. SC-17  
S 50°W , -45°  
1" = 400'  
TOOMS TWP.

PLAN

SC-17  
500'S , 270'W of Post 1  
Cl. P630748



1" = 200'

SECTION  
LOOKING N40°W

*Raymond L. ...*  
5/27/84



# 2



W8406.367

Name and Postal Address of Recorded Holder

41010NW0047 24 TOOMS

900

QUINTERRA RESOURCES INCORPORATED

Suite 1120, 635-8th Avenue S.W. Calgary, Alberta T2P 3M3

Summary of Work Performance and Distribution of Credits

Total Work Days Cr. claimed	Mining Claim			Work			Mining Claim			Work		
	Prefix	Number	Days Cr.	Prefix	Number	Days Cr.	Prefix	Number	Days Cr.	Prefix	Number	Days Cr.
1,000	P	735757	20.	P	735765	20	P	735804	22			
Performance of the following work. (Check one only) <input type="checkbox"/> Manual Work <input type="checkbox"/> Shaft Sinking Drifting or other Lateral Work. <input type="checkbox"/> Compressed Air, other Power driven or mechanical equip. <input type="checkbox"/> Power Stripping <input checked="" type="checkbox"/> Diamond or other Core drilling <input type="checkbox"/> Land Survey		735758	20.		735766	20		735805	22			
		735759	20.		735767	20		735806	22			
		735760	20.		735768	20		735807	22			
		735761	20.		735769	20		735808	22			
		735762	20.		735770	20		735809	22			
		735763	20.		735771	20		735810	22			
		735764	20.		735772	20		735811	22			

All the work was performed on Mining Claim(s): P630748, P648671

Required Information eg: type of equipment, Names, Addresses, etc. (See Table Below) 1984

BQ Wireline Diamond Drilling.

Norex Drilling Limited

P.O. Box 88

Porcupine, Ontario.

See attached diagrams.

Hole SC-17 S50°W Dip -45°

Length 500' Drilled Oct 25/83 to Oct 28/83.

Hole SC-18 S30°W Dip -45°

Length 500' drilled Oct 28/83 to Oct 4/83.

RECEIVED

RECORDED

SEP 11 1984

Receipt No. *C*

RECEIVED  
 SEP 11 1984  
 A.M. P.M.  
 7|8|9|10|11|12|1|2|3|4|5|6

Date of Report  
Sept 7/84

Recorded Holder or Agent (Signature)  
*Raymond Lashbrook*

Certification Verifying Report of Work

I hereby certify that I have a personal and intimate knowledge of the facts set forth in the Report of Work annexed hereto, having performed the work or witnessed same during and/or after its completion and the annexed report is true.

Name and Postal Address of Person Certifying

RAYMOND LASHBROOK, P.O. BOX 447, 321 Algonquin Ave., North Bay, P1B 8J1

Date Certified  
Sept 7/84

Certified by (Signature)  
*Raymond Lashbrook*

Table of Information/Attachments Required by the Mining Recorder

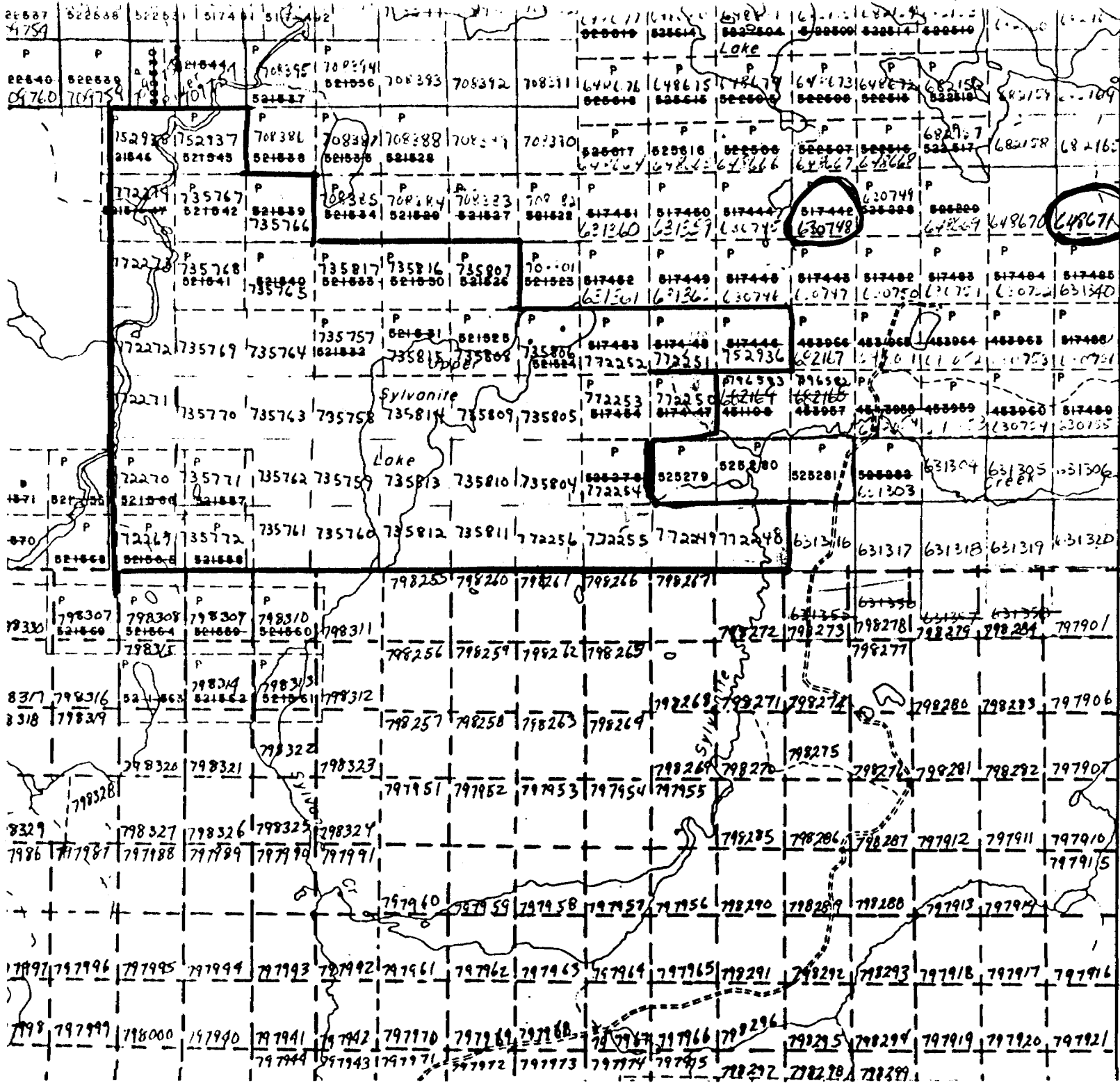
Type of Work	Specific information per type	Other information (Common to 2 or more types)	Attachments
Manual Work	Nil	Names and addresses of men who performed manual work/operated equipment, together with dates and hours of employment.	Work Sketch: these are required to show the location and extent of work in relation to the nearest claim post.
Shaft Sinking, Drifting or other Lateral Work			
Compressed air, other power driven or mechanical equip.	Type of equipment	Names and addresses of owner or operator together with dates when drilling/stripping done.	Work Sketch: as above in duplicate
Power Stripping	Type of equipment and amount expended. Note: Proof of actual cost must be submitted within 30 days of recording.		
Diamond or other core drilling	Signed core log showing footage, diameter of core, number and angles of holes.	Nil	Nil
Land Survey	Name and address of Ontario land surveyor.		

<u>PREFIX</u>	<u>MINING CLAIM NO.</u>	<u>WORK DAYS CREDIT.</u>
P	735812	20
P	735813	20
	735814	20
	735815	20
	735816	22
	735817	22
P	752936	22
	752937	20
	752938	20
P	772248	22
	772249	22
	772250	22
	772251	22
	772252	22
	772253	22
	772254	22
	772255	22
	772256	22
P	772269	20
	772270	20
	772271	20
	772272	20
	772273	20
	772274	20

TOTAL OF 48 claims.

1,000 days credit.

*Roy Lamberton*  
Sept 7/87



Greenlaw Twp. - M. 895

Tooms Twp.  
M-1159