



41010NW0048 23 TOOMS

010

DIAMOND DRILLING

TOWNSHIP: Tooms

REPORT No.: 23

WORK PERFORMED BY: Quinterra Resources Inc.

<u>CLAIM No.</u>	<u>HOLE No.</u>	<u>FOOTAGE</u>	<u>DATE</u>	<u>NOTE</u>
P 630750	SC-6	747	Jan/83	(1)

12 50

NOTES: (1) #134-84



**Diamond
Drilling
Log**

Fill in on
every page

Hole No. SC-6	Page No. 1
------------------	---------------

Drilling Company DOMINIK DRILLING (1981) INC.		Collar Elevation	Bearing of hole from true North 200°	Total Footage 747'	Dip of Hole at Collar 45°	Location of hole in relation to a fixed point on the claim. 800'W and 600'N of No. 2 Post, Claim P 630750	Map Reference No. 2121	Claim No. P 630750
Date Hole Started January 24, 1983	Date Completed January 30, 1983	Date Logged Feb. 5/83	Logged by D. G. Innes	300 Ft. 38	747 Ft. 37		Location (Twp., Lot, Con. or Lat. and Long.) TOOMS TWP.	
Exploration Co., Owner or Optionee QUINTERRA RESOURCES INC.		Date Submitted	Submitted by (Signature) 		FL.	Property Name SYLVANITE CREEK		

Footage		Rock Type	Description Colour, grain size, texture, minerals, alteration, etc.	Planar Feature Angle *	Core Specimen Footage †	Your Sample No.	Sample Footage		Sample Length	Assays ‡	
From	To						From	To		Au	
0	20'	OVB	- CASING							ppb	
20'	64'10"	Grey carb tuff	- fg dk green chloritic to light grey carbonate altered tuff - fairly massive and foliated @ 80° - numerous QV stringers; most at 45°			59201	21'8"	26'	4'4"		
			23': 4" of 60% QV + minor ankerite + few py grains and minor chlorite along vein walls - vuggy			59202	27'	31'8"	4'8"		
			24': 2" of 50% vuggy QV + ankerite + py stringers			59203	33'3"	35'	1'9"		
			25'6": 6" of 50% vuggy QV + 1% py in sericitic and sericitic and silisified tuff			59204	37'	42'	5'		
			27'4": 1" QV with green carb halo at 45°			59205	47'	49'6"	2'6"		
			28'5": 8" of sericitic and silisified tuff + 1/2% py. Bedding at 45°?			59206	54'	57'	3'		
			29'6": 1/2" vuggy QV + py at 10° + minor ankerite			59207	62'8"	68'	5'4"		
			33'9": 8" QV + silisified zone - 1% py - 50% QV + rusty brown carb at 90°								
			36' to 46'6": 10% QV + py stringers to 3mm at 45°								
			42': 1" QV at 45°; vuggy + minor py + carb								
			47': 1/4" vuggy carb + QV + minor py at 45°								
			48'1": 11" of 70% vuggy QCV at 30° + minor py & chlorite								

FORCUPINE MINING CORP.
RECEIVED
MAR 21 1984
7:18 AM



**Diamond
Drilling
Log**

Fill in on
every page

Hole No.
SC-6

Page No.
3

Drilling Company DOMINIK DRILLING (1981) INC.		Collar Elevation	Bearing of hole from true North 200°	Total Footage 747'	Dip of Hole at Collar 45°	Location of hole in relation to a fixed point on the claim. 800'W and 600'N of No. 2 Post, Claim P 630750	Map Reference No. 2121	Claim No. P 630750
Date Hole Started January 24, 1983	Date Completed January 30, 1983	Date Logged Feb. 5/83	Logged by D. G. Innes		300 FL 38		Location (Twp., Lot, Con. or Lat. and Long.) TOOMS TWP.	Property Name SYLVANITE CREEK
Exploration Co., Owner or Optionee QUINTERRA RESOURCES INC.		Date Submitted	Submitted by (Signature) 		747 FL 37			
					FL			

Footage		Rock Type	Description Colour, grain size, texture, minerals, alteration, etc.	Planar Feature Angle *	Core Specimen Footage †	Your Sample No.	Sample Footage		Sample Length	Assays †	
From	To						From	To		Au	
84'	94'	Mafic tuff	- f.g. dk green-black mafic tuff with minor carb alt'n - 50% white carb + minor green carb + qtz stringers to a few mm through section - stringers are contorted - may be minor graphite - stringers look like sweat-outs - few brown carb alt'n patches - minor dissem py; mainly in stringers								
						59211	84'	89'	5'		
						59212	89'	92'	3'		
						59213	92'	94'	2'		
94'	97'	Lamprophyre (syenite?)	- light grey-pink, chlorite flecked dike - may be syenitic - minor dissem py - contacts are sharp and chilled (40-45°)			59214	94'	97'	3'		
			94'9" to 95'4": green carb tuff ie: inclusion or two dikes?								
97'	104'7"	Green carb tuff	- mixture of c.g. green (60%) and grey (40%) carb tuff - 40% QCV stringers; highly contorted - 1/2% dissem py - minor black tourmaline in veins - some kink-banding in green carb			59215	97'	99'	21'		
						59216	99'	103'	4'		
			101': 6" of f.g. yellowish-green sericitic and silisified tuff								
104'7"	114'10"	Intermediate tuff-lapilli tuff	- mainly finely laminated intermed. to mafic tuff - bedding at 45° but contorted locally - few zones of sericitic and silisified tuff - 10% QV stringers to 1" + py + carb			59217	103'	108'	5'		
						59218	108'	113'	5'		
						59219	113'	117'	4'		



**Diamond
Drilling
Log**

Fill in on
every page

Drilling Company DOMINIK DRILLING (1981) INC.		Collar Elevation	Bearing of hole from true North 200°	Total Footage 747'	Dip of Hole at Collar 45°	Location of hole in relation to a fixed point on the claim. 800'W and 600'N of No. 2 Post, Claim P 630750	Map Reference No. 2121	Claim No. P 630750
Date Hole Started January 24, 1983	Date Completed January 30, 1983	Date Logged Feb. 5/83	Logged by D. G. Innes		300 FL 38		Location (Twp., Lot, Con. or Lat. and Long.) TOOMS TWP.	Property Name SYLVANITE CREEK
Exploration Co., Owner or Optionee QUINTERRA RESOURCES INC.		Date Submitted	Submitted by (Signature) <i>D. G. Innes</i>		747 FL 37			
					FL			

Footage		Rock Type	Description Colour, grain size, texture, minerals, alteration, etc.	Planar Feature Angle	Core Specimen Footage †	Your Sample No.	Sample Footage		Sample Length	Assays †	
From	To						From	To		Au	
115'10"	121'	Grey carb tuff	- mainly c.g. grey carb tuff + 20% QCV stringers with green carb halos - minor sericitic alt'n locally - foliation is mildly contorted			59220	117'	120'	3'		
121'	123'4"	Sericitic tuff	- light green-grey f.g.-m.g. sericitic and silisified tuff - lapilli tuff - lapilli are more sericitic and are stretched at 90°- streaky - 1% py through section - matrix is chloritic - 20% QV stringers carry minor py			59221	121'6"	124'	2'6"		
123'4"	130'	Mafic tuff	- laminated to thinly bedded chloritic tuff - minor carb alt'n; 1 to 2mm carb metacrysts - few QV stringers with sericitic halos which carry minor py			59222	128'8"	130'4"	1'8'		
130'	142'	Intermediate tuff	- f.g. to m.g., massive tuff with minor carb alt'n; carb metacrysts are pinkish-mauve in colour - few QV stringers which carry minor py + pinkish silisified alt'n halo - few chlorite stringers - about 10 QV's to 2mm per foot - lower 8" is pinkish and silisified - foliated at 80°			59223	136'6"	139'5"	2'11"		
142'	153'	Grey carb tuff	- m.g. grey carb tuff + 20% green carb - foliated at 75° - 15% QCV's, highly contorted + minor py + black tourmaline			59224	141'	146'	5'		
						59225	147'	151'	4'		
						59226	153'	154'	1'		



**Diamond
Drilling
Log**

Fill in on
every page

Drilling Company DOMINIK DRILLING (1981) INC.		Collar Elevation	Bearing of hole from true North 200°	Total Footage 747'	Dip of Hole at Collar 45°	Location of hole in relation to a fixed point on the claim. 800'W and 600'N of No. 2 Post, Claim P 630750	Map Reference No. 2121	Claim No. P 630750
Date Hole Started January 24, 1983	Date Completed January 30, 1983	Date Logged Feb. 5/83	Logged by D. G. Innes		300 Ft. 38°		Location (Twp., Lot, Con. or Lat. and Long.) TOOMS TWP.	Property Name SYLVANITE CREEK
Exploration Co., Owner or Optionee QUINTERRA RESOURCES INC.		Date Submitted	Submitted by (Signature) <i>D. G. Innes</i>		747 Ft. 37°			
					Ft. °			

Footage		Rock Type	Description <small>Colour, grain size, texture, minerals, alteration, etc.</small>	Planar Feature Angle °	Core Specimen Footage †	Your Sample No.	Sample Footage		Sample Length	Assays †	
From	To						From	To		Au	
153'	180'	Talc carbonate	- mainly massive dk grey c.g. to v.c.g. talc carbonate - carb metacrysts to 5mm - few small brown carb patches where talc carb is cut by CV's								
			154': minor black tourmaline in QCV at 45°								
			155': ground talcy core - fault zone? over about 6" at 40°??								
180'	194'	Carb mafic tuff	- f.g. to m.f.g. grey to chloritic green carb alt'ed mafic tuff - carb metacrysts to 1mm - bedding? at 60° - few QCV stringers + py + green carb halos			59227	192'8"	195'	2'4"		
			192' to 194': finger grained and alt'ed to green carb								
194'	201'	Green carb tuff	- m.g. to c.g. green carb + 30% QCV stringers - up to 5% py in stringers - minor black tourmaline in stringers			59228	195'	197'6"	2'6"		
						59229	197'6"	199'	1'6"		
		Note:	197'7" to 199': f.g. pinkish-green felsite? - dissem fucite through section - cut by QV + minor py - upper contact irregular but sharp at 50° - lower contact at 75° - may be a alt'n conduit			59230	199'	203'8"	4'8"		



Ontario

Ministry of Natural Resources

Diamond Drilling Log

Fill in on every page

Hole No. SC-6 Page No. 7

Drilling Company DOMINIK DRILLING (1981) INC.		Collar Elevation	Bearing of hole from true North 200°	Total Footage 747'	Dip of Hole at Collar 45°	Location of hole in relation to a fixed point on the claim. 800'W and 600'N of No. 2 Post, Claim P 630750	Map Reference No. 2121	Claim No. P 630750	
Date Hole Started January 24, 1983	Date Completed January 30, 1983	Date Logged Feb. 5/83	Logged by D. G. Innes		300 FL 38		Location (Twp., Lot, Con. or Lat. and Long.) TOOMS TWP.		
Exploration Co., Owner or Optionee QUINTERRA RESOURCES INC.		Date Submitted	Submitted by (Signature) <i>D. G. Innes</i>		747 FL 37		Property Name SYLVANITE CREEK		
					FL				

Footage		Rock Type	Description Colour, grain size, texture, minerals, alteration, etc.	Planar Feature Angle *	Core Specimen Footage †	Your Sample No.	Sample Footage		Sample Length	Assays ‡	
From	To						From	To		Au	
			248' to 253': more massive carb tuff; foliated at 70°							ppb	
			261' to 262': a bit more sericitic - transitional into next unit - foliation at 90°		*	59236	CHIP	OVER 200'			
263'	272'7"	Sericitic tuff	- light yellow-green, f.g. sericitic and silisified tuff - massively alt'd - 1% dissem py throughout section - numerous QV stringers - white to grey QTZ + minor carb along edges (maybe some albite?) - black tourmaline in veins and fractures is common - minor po locally and the odd grain of cpy and sphalerite			59237	262'	267'	5'		
						59238	267'	272'	5'		
			265'6": 2" grey QV + py at 45°								
			265'10": 4" 3% dissem py + po + minor sphalerite								
			266'3": 7" brown carb + white-grey QV at 30° + minor green carb; a bit vuggy + minor py								
			269'9": 2" QCV + py at 45°; carbonate is brown-yellow Qtz in white to grey								
			270'5": 3" dk green to black qtz vein + 5% py at 50°								
272'7"	279'	Grey carb tuff	- massive f.g. to m.g. light grey carb (+ sericitic) tuff - virtually no veining and only the odd grain of py - few 1 to 3mm black QV stringers at 45°			59239	272'	273'6"	1'6"		



**Diamond
Drilling
Log**

Fill in on
every page

Drilling Company DOMINIK DRILLING (1981) INC.		Collar Elevation	Bearing of hole from true North 200°	Total Footage 747'	Dip of Hole at Collar 45°	Location of hole in relation to a fixed point on the claim. 800'W and 600'N of No. 2 Post, Claim P 630750	Map Reference No. 2121	Claim No. P 630750	
Date Hole Started January 24, 1983	Date Completed January 30, 1983	Date Logged Feb. 5/83	Logged by D. G. Innes		300 FL 38°		Location (Twp., Lot, Con. or Lat. and Long.) TOOMS TWP.	Property Name SYLVANITE CREEK	
Exploration Co., Owner or Optionee QUINTERRA RESOURCES INC.		Date Submitted	Submitted by (Signature) <i>D. G. Innes</i>		747 FL 37°				
					FL °				

Footage		Rock Type	Description Colour, grain size, texture, minerals, alteration, etc.	Planar Feature Angle *	Core Specimen Footage †	Your Sample No.	Sample Footage		Sample Length	Assays †	
From	To						From	To		Au	
			378'2": 1" QV, grey, + black tourmaline + py @ 90°								
			379'4": 5" sericitic patch								
			- foliation varies through the section from 45° to 90° - averages about 75°								
			- whole section is mildly carbonate alt'd with local distinct zone of carb metacrysts to 2mm developed			59243	at (373'7"		6")		
						plus	(378'2"		6")		
397'	448'4"	Sericitic tuff	- mildly to intensely sericitic and silisified as before with more QV stringers			59259	398'4"	400'	1'8"		
			- 20% QV stringers - Qtz is grey and always carries py			59260	400'	401'	1'		
			- whole section carries minor dissem py			59261	401'	407'	6'		
			400' to 401': pink biotite lamp - syenite as before in the centre of the most intensely alt'd zone			59262	407'	412'	5'		
			- contacts are sharp at 60° and are fine grained			59263	412'	416'6"	4'6"		
			ie. intrusive into the alteration conduit			59264	416'6"	421'6"	5'		
			- black tourmaline is very common - ie. in 70% of veins								
			- QV's are mixture of white to grey qtz + some carb + some white albite along margins			59265	421'6"	426'6"	5'		
			- veining at every angle to core axis			59266	426'6"	431'			
			- few chlorite stringers								
			- foliation from 90° to 20°			59267	431'	436'	5'		
			410'5" to 411'10": less sericitic carb alt'd tuff			59268	436'	441'	5'		
						59269	441'	446'	5'		
						59270	446'	448'4"	2'4"		



**Diamond
Drilling
Log**

Fill in on
every page

Hole No.
SC-6

Page No.
14

Drilling Company DOMINIK DRILLING (1981) INC.		Collar Elevation	Bearing of hole from true North 200°	Total Footage 747'	Dip of Hole at Collar 45	Location of hole in relation to a fixed point on the claim. 800'W and 600'N of No. 2 Post, Claim P 630750	Map Reference No. 2121	Claim No. P 630750
Date Hole Started January 24, 1983	Date Completed January 30, 1983	Date Logged Feb. 5/83	Logged by D. G. Innes		300 FL 38		Location (Twp., Lot, Con. or Lat. and Long.) TOOMS TWP.	Property Name SYLVANITE CREEK
Exploration Co., Owner or Optionee QUINTERRA RESOURCES INC.		Date Submitted	Submitted by (Signature) <i>D. G. Innes</i>		747 FL 37			
					FL			

Footage		Rock Type	Description Colour, grain size, texture, minerals, alteration, etc.	Planar Feature Angle *	Core Specimen Footage †	Your Sample No.	Sample Footage		Sample Length	Assays †	
From	To						From	To		Au	
484'7"	487'	Green carb tuff	- c.g. heavily veined green carbonate - 40% QCV's + py + minor brown tourmaline								
						59276	484'6"	487'	2'6"		
487'	490'	Talc-carbonate	- grey talc carbonate as before - massive with 2% QCV stringers								
490'	494'8"	Green carb tuff	- as before - green carbonate + 20% QCV stringers - stringers carry minor py + brown tourmaline - some of the Qtz is grey - upper contact is marked by 3" of f.g. light yellow-beige sericitic tuff - looks mylonitized			59277	490'	494'8"	4'8"		
494'8"	501'	Pink sericitic tuff	- f.g. beige to pink sericitic? to carbonate massively alt'd unit - silicified - dissem fine fucite through section with black biotite in less alt'd pinker sections - a few dark grey QV stringers - very fine disseminated py through section - upper contact is sharp but very irregular - lower contact is more diffuse into green carbonate - veining in green carbonate host cuts this unit								
501'	526'6"	Green carb tuff	- as before - c.g. green carbonate + 25% grey to dark grey QCV's - few grey talc carb patches in the green carbonate - many of the QV's are grey to dark grey - carbonate stringers are white			592979	501'	506'	5'		
						59280	506'	511'	5'		
						59281	511'	516'	5'		
			505' to 507'2": sericitic alt'd zone as above			59282	516'	521'	5'		
						59283	521'	526'6"	5'6"		



**Diamond
Drilling
Log**

Fill in on
every page

Drilling Company DOMINIK DRILLING (1981) INC.		Collar Elevation	Bearing of hole from true North 200°	Total Footage 747'	Dip of Hole at Collar 45°	Location of hole in relation to a fixed point on the claim. 800'W and 600'N of No. 2 Post, Claim P 630750	Map Reference No. 2121	Claim No. P 630750	
Date Hole Started January 24, 1983	Date Completed January 30, 1983	Date Logged Feb. 5/83	Logged by D. G. Innes		300 FL 38		Location (Twp., Lot, Con. or Lat. and Long.) TOOMS TWP.		
Exploration Co., Owner or Optionee QUINTERRA RESOURCES INC.		Date Submitted	Submitted by (Signature) 		747 FL 37		Property Name SYLVANITE CREEK		
					FL				

Footage		Rock Type	Description Colour, grain size, texture, minerals, alteration, etc.	Planar Feature Angle *	Core Specimen Footage †	Your Sample No.	Sample Footage		Sample Length	Assays †	
From	To						From	To		Au	
526'6"	537'2"	Silicified tuff	- f.g. grey pyritic silicified and sericitic tuff, cut by numerous grey QV stringers at all angles to the core - 2 to 5% py through section with py to 15% over a few inches locally - may be some brown tourmaline - few of the veins are surrounded by green carb halos - minor cpy thin section			59284	526'6"	528'8"	2'		
						59285	528'6"	530'	1'6"		
						59286	530'	533'	3'		
						59287	533'	537'2"	4'2"		
			528'6" to 530': pink feldspar-syenite as before - green carb or chlorite dissem through section - contacts are irregular but sharp at about 30° - fine dissem py as before - few purple-red hem patches through section			59288	(CHIP between 200 and 500 feet)				
537'2"	538'9"	Carb tuff	- c.g. grey carbonate tuff - massive with v.c.g. carb meta-crysts - no veining			59289	537'2"	540'	2'10"		
538'9"	540'	Green carb tuff	- classical green carbonate as before - 25% QCV's + 2% dissem py - mainly in the veins - small 2" patch of silicified tuff								
540'	545'5"	Pink syenite	- as before - dike-syenite - sericitic and silicified - flecked with fucite - fine dissem py throughout - upper contact is sharp and irregular at about 75° - few grey-white QV stringers with halo of radiating black tourmaline			59290	540'	545'5"	5'5"		

*Tooms Twp.
W.R. # 134/S*



41010NW0048 23 TOOMS

The Mining

900

Name and Address of Recorded Holder
QUINTERRA Resources Inc. T-1312
 Suite 1120, 635 Eighth Avenue S.W., Calgary, Alberta T2P 3M3

Summary of Work Performance and Distribution of Credits

Total Work Days Cr. claimed 747	Mining Claim			Work Days Cr.	Mining Claim			Work Days Cr.	Mining Claim			Work Days Cr.
	Prefix	Number	Work Days Cr.		Prefix	Number	Work Days Cr.		Prefix	Number	Work Days Cr.	
for Performance of the following work. (Check one only) <input type="checkbox"/> Manual Work <input type="checkbox"/> Shaft Sinking Drifting or other Lateral Work. <input type="checkbox"/> Compressed Air, other Power driven or mechanical equip. <input type="checkbox"/> Power Stripping <input checked="" type="checkbox"/> Diamond or other Core drilling <input type="checkbox"/> Land Survey	P	602167	41.5	P	630751	53.35 41.5	P	630755	53.45 41.5			
		682168	41.5		648051	53.35 41.5		752936	41.5			
		682169	41.5		648052	53.35 41.5						
		630746	53.35 41.5		648053	53.35 41.5						
		630747	53.35 41.5		648054	53.35 41.5						
		630748	53.35 41.5		630752	53.35 41.5						
		630749	53.35 41.5		630753	53.35 41.5						
		630750	53.35 41.5		630754	53.35 41.5						

All the work was performed on Mining Claim(s): P630750

ONTARIO GEOLOGICAL SURVEY
ASSESSMENT FILES
REGISTRATION OFFICE

Required Information eg: type of equipment, Names, Addresses, etc. (See Table Below)

BQ Wireline Drilling
 Dominik Drilling (1981) Inc.,
 P.O. Box 247,
 Val d'Or, Que J9P 4P3
 Hole SC-6 drilled at 45° in a 200°azm. direction
 Drilling period: Jan. 24 to Jan. 30, 1983

APR 20 1984
RECEIVED

RECORDED
MAR 21 1984
Receipt No. 310

PORCUPINE MINING DIVISION
RECEIVED
MAR 21 1984 SR
A.M. 7:8:9:10:11:12:1:2:3:4:5:6
P.M.

Date of Report March 18, 1984	Recorded Holder or Agent (Signature) <i>W. Karvinen</i>
----------------------------------	--

Certification Verifying Report of Work

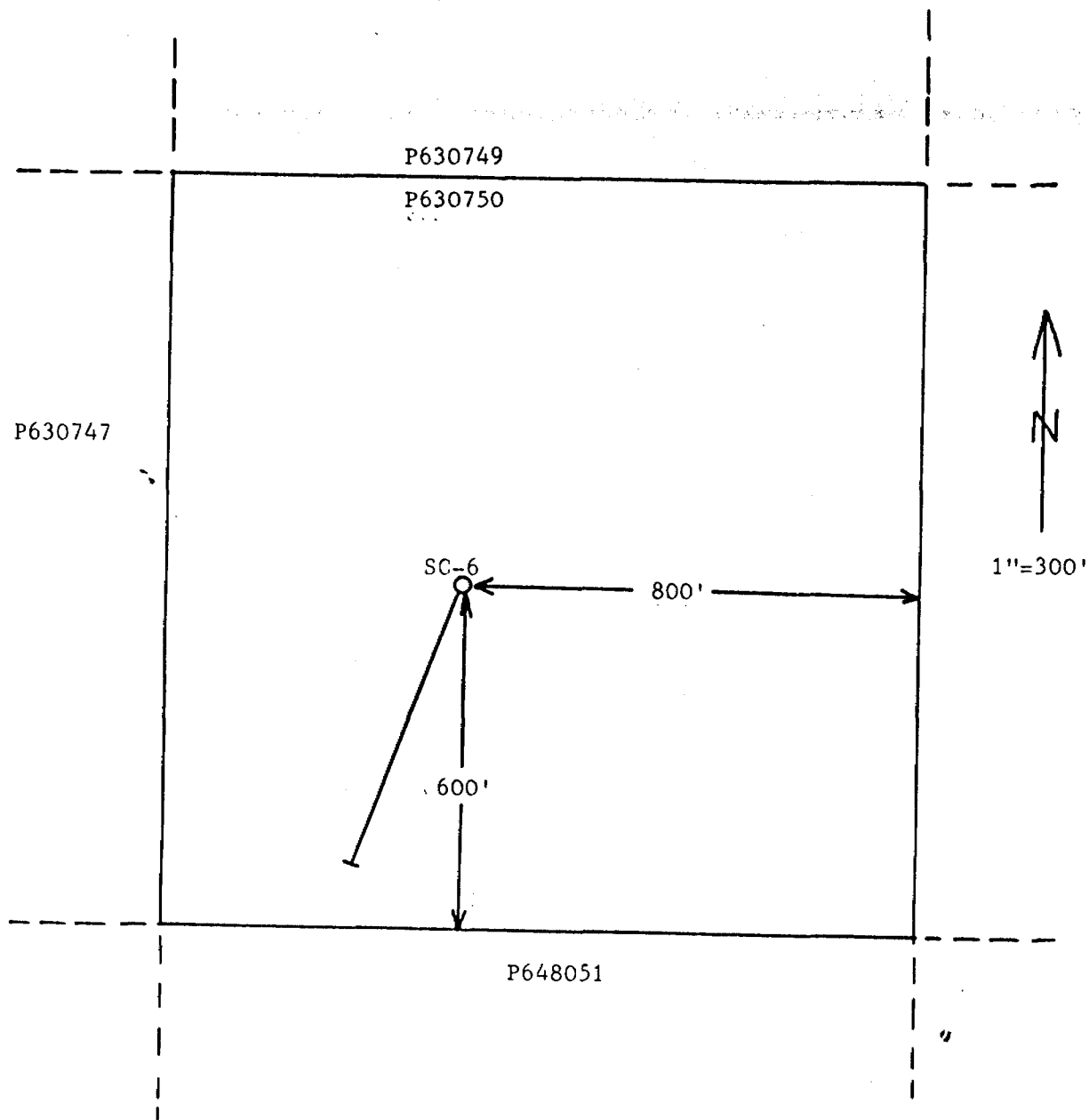
I hereby certify that I have a personal and intimate knowledge of the facts set forth in the Report of Work annexed hereto, having performed the work or witnessed same during and/or after its completion and the annexed report is true.

Name and Postal Address of Person Certifying
Dr. William O. Karvinen
 32 Lakeland Pt. Dr., Kingston, Ont. K7M 4E7

Date Certified March 18, 1984	Certified by (Signature) <i>W. Karvinen</i>
----------------------------------	--

Table of Information/Attachments Required by the Mining Recorder

Type of Work	Specific information per type	Other information (Common to 2 or more types)	Attachments
Manual Work	Nil	Names and addresses of men who performed manual work/operated equipment, together with dates and hours of employment.	Work Sketch: these are required to show the location and extent of work in relation to the nearest claim post.
Shaft Sinking, Drifting or other Lateral Work			
Compressed air, other power driven or mechanical equip.	Type of equipment	Names and addresses of owner or operator together with dates when drilling/stripping done.	
Power Stripping	Type of equipment and amount expended. Note: Proof of actual cost must be submitted within 30 days of recording.		
Diamond or other core drilling	Signed core log showing; footage, diameter of core, number and angles of holes.	Nil	Work Sketch (as above) in duplicate
Land Survey	Name and address of Ontario land surveyor.		Nil

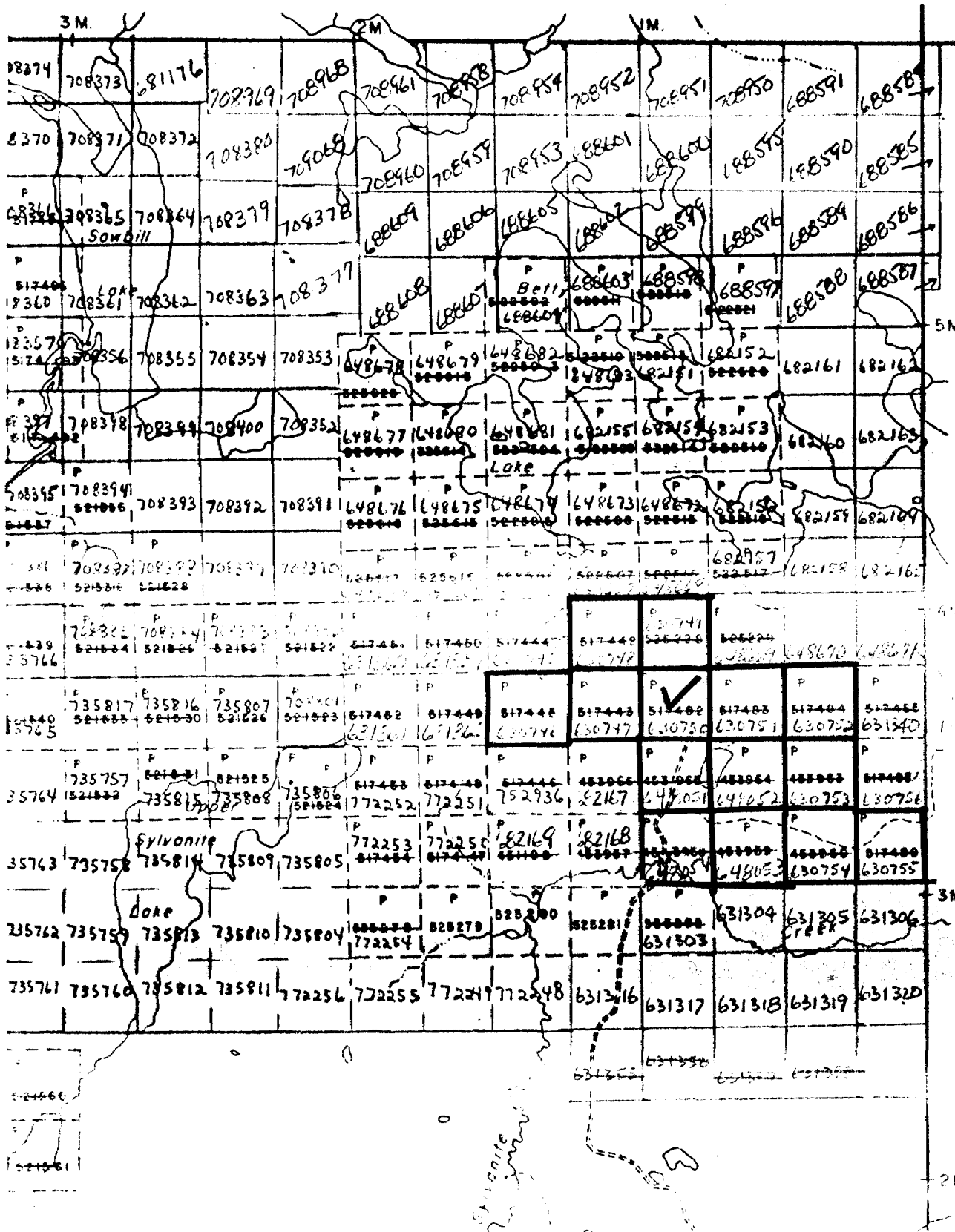


Location of Diamond Drill Hole SC-6,
Quinterra Property, Tooms Township.

PORCUPINE MINING DIVISION
RECEIVED
 MAR 21 1984
 A.M. P.M.
 7 8 9 10 11 12 1 2 3 4 5 6

v Twp. M.906

Tomio Twp.
M-1159



Greenlaw Twp. - M.895