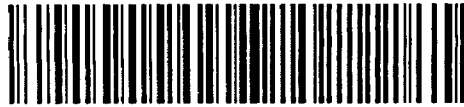


DIAMOND DRILLING



41010NW0052 25 TOOMS

010

TOWNSHIP: TOOMS

REPORT No.: 25

WORK PERFORMED BY: Quinterra Resources Inc.

<u>CLAIM No.</u>	<u>HOLE No.</u>	<u>FOOTAGE</u>	<u>DATE</u>	<u>NOTE</u>
P 630745	83-1	357'	Aug/83	(1)
	83-2	601'	Aug/83	(1)
P 630746	83-3	437'	Aug/83	(1)
P 630745	SC-5	787'	Jan/83	(2)
P 630746	SC-10	300'	Sept/83	(3)
P 630745	SC-11	375'	Sept/83	(3)
	SC-12	106'	Sept/83	(3)
	SC-12A	208'	Sept/83	(3)
	SC-13	320'	Sept/83	(4)
P 630750	SC-15	700'	Oct/83	(4)
P 648670	SC-19	501'	Nov/83	(4)

1110/4682'

- NOTES: (1) #19-85  
(2) #29-85  
(3) #31-85  
(4) #10-85

Drilling Company <b>Norex Drilling Ltd.</b>		Collar Elevation	Bearing of hole from true North <b>190° Azm.</b>	Total Footage <b>357 ft.</b>	Dip of Hole at Color <b>45</b>	Location of hole in relation to a fixed point on the claim.  <b>S25N 1600E 100'N and 500'E of Post No.3, claim P630745</b>	Map Reference No.	Claim No. <b>P630745</b>
Date Hole Started <b>Aug. 3, 1983</b>	Date Completed <b>Aug. 5, 1983</b>	Date Logged	Logged by	<b>357 ft   39</b>	<b>nl</b>		Location (Twp., Lot, Con. or Lat. and Long.)  <b>Tooms Township</b>	
Exploration Co., Owner or Offensee  <b>Quinterra Resources Inc.</b>		Date Submitted <b>Jan 17/85</b>	Submitted by (Signature) <i>Ray Gustafson</i>		<b>nl</b>	Property Name <b>Sylvanite Creek</b>		

Footage		Rock Type	Description <small>Colour, grain size, texture, minerals, alteration, etc.</small>	Placer Footage Angle	Core Specimen Footage	Year Sample No.	Sample Footage		Sample Length	Assays
From	To						From	To		
0	32	overburden								
32	51	altered rock qtz-carbonate exhalite	- 1% diss. pyrite; very silicified and carbonatized; gray - some ghostly feldspar grains - "porphyry" - fine-grained - fuchsite common; few qtz veins							
			32'2" to 33'7" -very fine grained, siliceous rock with fuchsite and 1% diss. py.			60128	32'2"	33'7"	1'5"	18
			33'7" to 35' -core missing							
			35' to 40' -siliceous rock with ghostly feldspar grains & diss. py.			60129	35'	40'	5'	7
			40' to 43' -siliceous rock with ghostly feldspar grains & diss. py.			60130	40'	43'	3'	40
			43' to 45' -same with two qtz. veins 1" thick at 30° to C.A.			60131	43'	45'	2'	29
			45' to 48' -same as above			60132	45'	48'	3'	16
			48' to 51' -fine-gr.; reddish and greenish siliceous rock; 1% diss. py. -foliation at 90° to C.A.			60133	48'	51'	3'	30
51'	63'6"	carbonatized mafic tuff	- green to dark green; well foliated (90° to C.A.) - few thin veinlets; also some altered qtz. zones							
			53'6" to 54'6" -pyritic, limey-green, silicified with qtz veins; 2% py			60134	53'6"	54'6"	1'	45

183 187/11 \* For features such as foliation, bedding, schistosity, measured from the long axis of the core. † Additional credit available. See Assessment Work Regulations.



Drilling Company <b>Norex Drilling Limited</b>		Collar Elevation	Bearing of hole from true North <b>190° Azm.</b>	Total Footage	Dip of Hole at <b>45°</b> Contour	Location of hole in relation to a fixed point on the claim.  <b>525N 1600E 100'N and 500'E of Post No.3, claim P630745</b>	Map Reference No.	Claim No. <b>P630745</b>
Date Hole Started <b>Aug. 3, 1983</b>	Date Completed <b>Aug. 5, 1983</b>	Date Logged <b>Aug. 6/5/83</b>	Logged by <b>Dr. W. D. Karvinen</b>		n.		Location (Twp., Lat. Con. or Lat. and Long)  <b>Tooms Township</b>	Property Name <b>Sylvanite Creek</b>
Exploring Co., Owner or Options		Date Submitted	Submitted by (Signature)		n.			
					n.			

Footage		Rock Type	Description <small>Colour, grain size, texture, minerals, alteration, etc.</small>	Planar Feature Angle	Core Specimen Footage	Your Sample No.	Sample Footage		Sample Length	Assays † Au/pph
From	To						From	To		
63'6"	71'	altered rock qtz. carbonate exhalite	- gray, greenish and reddish; fine grained, hard - mixture of qtz. and carbonate - few qtz. veins at 40° to C.A. - diss. py. about 2-3% - contact is knife sharp and at 65° to C.A. (70°N dip) - greenish sections have fuchsite							
			63'6" to 66' --reddish-gray qtz-carb; veinlets; 1/2% py			60135	63'6"	66'	2'6"	12
			66' to 69'6" -greenish qtz-carb. with thin layers of gray qtz.-carb.; contacts sharp; at 65° to C.A., few veinlets 2% py			60136	66'	69'6"	3'6"	92
			69'6" to 71' -gray qtz.-carb. with qtz. veins (1/2") at 40° to C.A.			60137	69'6"	71'	1'5"	27
71'	102'6"	mafic tuff	- dark green; chloritic; little to no carb - glassy to gray qtz. veins; barren; 1% veins up to 3/4 in v - 1% cubic py at 95'; rest has little py							
101'6"	107'	qtz-carb. exhalite	- gray, fine-gr.; 1/2% pyrite; 5% veins at 40° to C.A.							
			102'6" to 104' -very fine-gr. foliation faint; 1/2% py, few veinlets			60138	102'6"	104'	2'6"	82
			104' to 105' -3 qtz. veins (1" to 2" thick) in qtz-carb.			60139	104'	105'	1'	52



Drilling Company <b>Horex Drilling Limited</b>		Collar Elevation	Bearing of hole from true North <b>190° Azm.</b>	Total Footage	Dip of Hole at <b>45°</b>	Location of hole in relation to a fixed point on the claim.		Map Reference No.	Claim No. <b>P630745</b>		
Date Hole Started <b>Aug. 3, 1983</b>	Date Completed <b>Aug. 5, 1983</b>	Date Logged <b>Aug. 4/83</b>	Logged by <b>Dr. M. O. Karvinen</b>			<b>525N 1600E 100'N and 500'E of Post No.3, claim P630745</b>		Location (Twp., Lot, Con. or Lat. and Long.)			
Exploration Co. Owner or Options		Date Submitted	Submitted by (Signature)					Tooms Township			
								Property Name			
								Sylvanite Creek			
Footage		Rock Type	Description Colour, grain size, texture, minerals, alteration, etc.	Placer Feature Angle *	Core Specimen Footage †	Your Sample No.	Sample Footage		Sample Length	Assays ‡	
From	To						From	To		Au/ppb	
			105' to 107' -gray, fine-gr. qtz carb.			60140	105'	107'	2'	37	
107'	116'	mafic tuff	- dark, chloritic; 10% qtz-carb veinlets (barren); - bleached contact towards syenitic dike - traces of pyrite - partly carbonatized in places;								
116'	118'6"	syenite	- bleached contacts with qtz veins - contact parallel to layering in mafic tuff - 1/2% diss. py								
			116' to 117' -bleached with qtz veins & 1/2% py			60141	116'	117'	1'	41	
			117' to 118'6" -red, med. gr. syenite; tr. py; few veins			60142	117'	118'6"	1'6"	30	
118'6"	225'	mafic tuff	- chloritic; carbonatized in places; veinlets and bleached zones associated with syenite and veining								
			120' to 122' -bleached tuff with 15% qtz veinlets and pyritic wall rocks			60143	120'	122'	2'	44	
			124' to 125'6" -same			60144	124'	125'6"	1'6"	23	
			143' to 145' -silicified and bleached mafic tuff with qtz veins at 50° to C.A., 1% diss py			60145	143'	145'	2'	144	



Drilling Company <b>Norex Drilling Limited</b>		Collar Elevation	Bearing of hole from true North <b>190° Azm.</b>	Total Footage	Dip of Hole at Collar <b>45°</b>	Location of hole in relation to a fixed point on the claim.  <b>525N 1600E 100'N and 500'E of Post No.3, claim P630745</b>	Map Reference No.	Claim No. <b>P630745</b>
Date Hole Started <b>Aug. 3, 1983</b>	Date Completed <b>Aug. 5, 1983</b>	Date Logged <b>Aug. 4/83</b>	Logged by <b>Dr. W. D. Karvinen</b>				Location (Twp., Lot, Con. or Lat. and Long.)  <b>Tooms Township</b>	
Exploration Co., Owner or Options		Date Submitted	Submitted by (Signature)				Property Name <b>Sylvanite Creek</b>	

Footage		Rock Type	Description <small>Colour, grain size, texture, minerals, alteration, etc.</small>	Placer Feature Angle *	Core Specimen Footage †	Your Sample No.	Sample Footage		Sample Length	Assays ‡	
From	To						From	To		Au/ppb	
			150' to 158' -carbonatized mafic tuff; qtz veinlets; some pyrite cubes								
			153' to 154' -bleached with qtz veins and cubic py			60146	153'	154'	1'	175	
			154'4" to 155' -same as above			60147	154'8"	155'	4"	280	
			156'2" to 156'8" -same as above			60148	156'2"	156'8"	6"	26	
			201' to 209' -carbonatized mafic tuff -gray green, few barren veins								
225'	290'	chert-carbonate iron formation (minor tuff)	- creamy white, with cubic pyrite (1%) and hematite; slump structures common  - contact abrupt with tuff; layering nearly parallel to C.A.; smokey qtz veins; py & cpy 1%								
			225' to 226' -creamy chert-carbonate; diss. py 1%			60149	225'	226'	1'	40	
			226' to 227' -green tuff and carb (creamy); diss. py 4%			60150	226'	227'	1'	32	
			227' to 229' -thinly-bedded chert, carb, tuff; 4% py			60501	227'	229'	2'	43	
			229' to 231' -4" smokey qtz vein with cpy & py in chert carb;			60502	229'	231'	3'	70	
			231' to 236' -fine chert and tuff with veinlets & diss. py (1%) gray-green to bleached;			60503	231'	236'	5'	26	
			236' to 240' -gray, carbonatized mafic tuff								
			240' to 242' -reddish-gray siliceous tuff								



Drilling Company <b>Norex Drilling Limited</b>		Collar Elevation	Bearing of hole from true North <b>190° Azm.</b>	Total Footage	Dip of Hole at <b>45° Collar</b>	Location of hole in relation to a fixed point on the claim.  <b>525N 1600E 100'N and 500'E of Post No.3, claim P630745</b>	Map Reference No.	Claim No. <b>P630745</b>
Date Hole Started <b>Aug. 3, 1983</b>	Date Completed <b>Aug. 5, 1983</b>	Date Logged <b>Aug. 4/5/83</b>	Logged by <b>Dr. W. O. Karvinen</b>		<b>ft.</b>		Location (Twp., Lot, Con. or Lot. and Long.)  <b>Tooms Township</b>	Property Name <b>Sylvanite Creek</b>
Exploration Co., Owner or Optionee		Date Submitted	Submitted by (Signature)		<b>ft.</b>			
					<b>ft.</b>			

Footage		Rock Type	Description <small>Colour, grain size, texture, minerals, alteration, etc.</small>	Pillar Feet Angle	Core Specimen Footage †	Your Sample No.	Sample Footage		Sample Length	Assays ‡	
From	To						From	To		Au/ppb	
			242' to 244' -reddish, massive, fine-gr. chert 1/2 to 2% py; few veinlets			60504	242'	244'	2'	19	
			244' to 245' -siliceous carb.-tuff								
			245' to 249' -fractured, dirty crystalline chert; veinlets with 1-2% py			60505	245'	249'	4'	16	
			249' to 253' -very siliceous, light-gray to white crystalline chert; white, massive qtz. veins (1-2") with diss. py at 50° to C.A.			60506	249'	253'	4'	33	
			253' to 258' -same with 15% qtz veins (1-2") with py and black tourmaline at 55° to C.A.; diss. py 1-2% & some cubes; albite and ankerite with qtz in veins			60507	253'	258'	5'	73	
			258' to 263' -crystalline chert and siliceous carb tuff with 15% qtz-albite veins at 80° to C.A. diss. py 1-2%			60508	258'	263'	5'	45	
			263' to 264'6" -siliceous carb tuff; dark green								
			264'6" to 267' -light-gray, crystalline chert; qtz vein (1") with py at 263p			60509	264'6"	267'	2'6"	45	
			267' to 269' -dark green, mafic tuff								
			269' to 274' -carbonatized mafic tuff; silicified in places								
			274' to 276' -thinly-bedded chert and tuff with 2% cubic and diss. py; layered at 55° to C.A.			60510	274'	276'	2'	29	



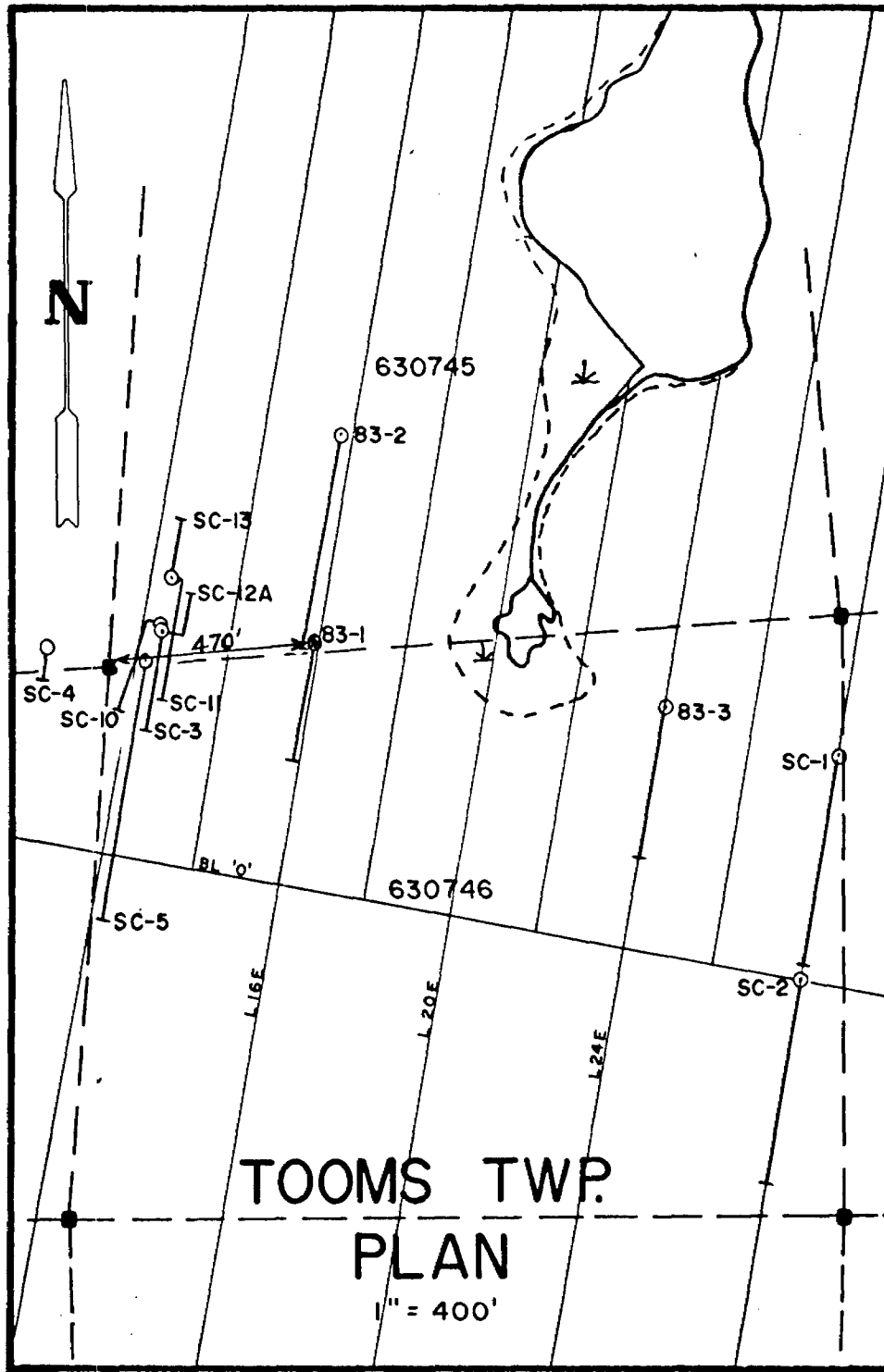
Drilling Company <b>Horex Drilling Limited</b>		Collar Elevation	Bearing of hole from true North 190° Azm.	Total Footage	Dip of Hole at 45° Collar	Location of hole in relation to a fixed point on the claim.  525N 1600E 100'N and 500'E of Post No.3, claim P630745	Map Reference No.	Claim No. P630745
Date Hole Started Aug. 3, 1983	Date Completed Aug. 5, 1983	Date Logged Aug. 4/5/83	Logged by Dr. V. O. Karvinen				Location (Twp., Lot, Con. or Lat. and Long.)  Tooms Township	
Exploration Co., Owner or Optionee		Date Submitted	Submitted by (Signature)				Property Name Sylvanite Creek	

Footage		Rock Type	Description Colour, grain size, texture, minerals, alteration, etc.	Placer Feature Angle*	Core Specimen Footage †	Your Sample No.	Sample Footage		Sample Length	Assays ‡	
From	To						From	To		Au/pph	
			276' to 278' -massive, crystalline, gray chert with diss. py (1/2)			60511	276'	278'	2'	114	
			278' to 281' -thinly-bedded pyritic chert with thin (2 mm)			60512	278'	281'	3'	22	
			281' to 282' -carb mafic tuff								
			282' to 284' -massive, gray chert with tuff; diss. py (1/2)			60513	282'	284'	2'	77	
			284' to 286' -gray massive chert with 3 (1 1/2") Qtz veins with albite; diss. py and tr. cpy			60514	284'	286'	2'	141	
			286' to 290' -gray, massive chert; mottled; few veins; 1/2 py			60515	286'	290'	4'	47	
290'	331'4"	carbonatized mafic tuff	- dark green, mottled texture; well-layered; sections of veins with bleached wall rock and py								
			299' to 300' -3 narrow veinlets at 60° to C.A. and parallel to layering; pyritic walls			60516	299'	300'	1'	66	
			312' to 313' -same as above			60516	312'	313'	1'	66	
			323' to 324' -Qtz vein zone ~3" wide with pyrite			60517	323'	324'	1'	52	
			330' to 331' -Qtz vein zone ~3" wide with pyrite			60518	330'	331'	1'	38	
331'4"	344'	chert-carbonate exhalite (minor tuff)	- very massive, light-gray, fine-grained with Qtz veins and pyrite								
			331'4" to 334' -massive chert with Qtz veins at 60° to C.A.			60519	331'4"	334'	2'8"	38	
			334' to 336' -massive chert with Qtz veins at 60° to C.A.			60520	334'	336'	2'	52	

Drilling Company Norex Drilling Limited		Collar Elevation	Heading of hole from true North 190° Azm.	Total Footage	Dip of Hole at Collar 45°	Location of hole in relation to a fixed point on the claim. 525N 1600E 100' N and 500' E of Post No. 3, claim P630745	Map Reference No.	Claim No. P630745	
Date Hole Started Aug. 3, 1983	Date Completed Aug. 5, 1983	Date Logged Aug. 4/83	Logged by Dr. W. O. Karvinen				Location (Twp., Lot, Con. or Lat. and Long.) Tooms Township		
Exploration Co., Owner or Optionee		Date Submitted	Submitted by (Signature)				Property Name Sylvanite Creek		

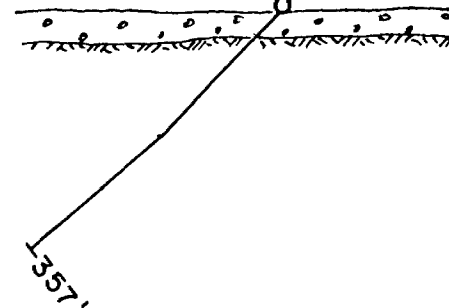
Footage		Rock Type	Description Colour, grain size, texture, minerals, alteration, etc.	Placer Feature Angle	Core Specimen Footage †	Your Sample No.	Sample Footage		Sample Length	Assays ‡	
From	To						From	To		Au/ppb	
			336' to 338' -very silicified; 3 qtz veins and pyritic walls			60521	336'	338'	2'	34	
			338' to 341' -very silicified; 3 qtz veins and pyritic walls			60522	338'	341'	3'	18	
			341' to 344' -same as above			60523	341'	344'	3'	32	
344'	357'	carbonatized mafic tuff	- foliated and layered at 70° to C.A. - very few barren qtz veinlets								
	357'		End of hole								





D.D.H. 83-1  
-45°, S10°W

20' N, 470' E of #3 Post 630745



SECTION

1" = 200'

*Ray Lashbrook*  
Jan 17/85

Natu  
ResDrilling  
LogFit in on  
every page

Page No.

Drilling Company <b>Horex Drilling Limited</b>		Collar Elevation	Heading of hole from true North 190 Azm	Total Footage 437 ft.	Dip of Hole at Collar 45	Location of hole in relation to a fixed point on the claim.		Map Reference No.	Claim No. P630746
Date Hole Started Aug. 11, 1983	Date Completed Aug. 15, 1983	Date Logged Aug. 12/83	Logged by Dr. W. O. Karvinen		437 ft. 35	550N 2400E 300'S and 400'W of No.1 post, claim P630746		Location (Twp., Lot, Con. or Lot. and Long.)  Tooms Township	
Exploration Co., Owner or Optionee  Quinterra Resources Inc.		Date Submitted Jan 17/85	Submitted by (Signature) <i>Ray Lushwood</i>		n/			Property Name Sylvanite Creek	
					n/				

Footage		Rock Type	Description Colour, grain size, texture, minerals, alteration, etc.	Planar Feature Angle *	Core Specimen Footage †	Your Sample No.	Sample Footage		Sample Length	Assays ‡	
From	To						From	To		Au	
0	103	overburden								ppb	
103	251	carbonatized ultramafic	- gray to green-gray, totally carbonatized ultramafic; few chlorite-rich zones - Qtz-carb veins (barren) common - few sections of green carb (few inches) - massive; many sections have large talc component - fault or shear zones common - layering in places at 60° to G.A.								
251	253	siliceous exhalite	- light gray to white, massive, crystalline; - diss. py (1%)			60334	251'	253'	2'		48
253	293	carbonatized ultramafic	- gray, crystalline, massive - barren veins - minor silicified zones								
			260' to 261' -fuchsite-bearing, siliceous zone, diss. py			60335	260'	261'	1'		11
			275' to 286' -light-gray, talc-carbonate, well foliated at 70° to G.A.								
293	299	siliceous exhalite	293' to 296' -gray, siliceous exhalite with chlorite zones and fuchsite; 1% diss. py			60336	293'	296'	3'		23
			296' to 298' -chloritic carb, ultramafic ruff								
			298' to 299' -siliceous, chloritic exhalite; 1% py			60337	298'	299'	1'		18

702 (02/75)

\* For features such as foliation, bedding, schistosity, measured from the long axis of the core.

† Additional credit available. See Assessment Work Regulations.



Drilling Company <b>Ndrex Drilling Limited</b>		Collar Elevation	Bearing of hole from true North 190° Azm	Total Footage 437 ft.	Dip of Hole at Collar 65°	Location of hole in relation to a fixed point on the claim.  550N 2400E 300'S and 400'W of No.1 post, claim P630746	Map Reference No.	Claim No. P630746	
Date Hole Started Aug. 11, 1983	Date Completed Aug. 15, 1983	Date Logged Aug. 12/83	Logged by Dr. W. O. Karvinen		437 ft   35		Location (Twp., Lot, Con. or Lat. and Long.)  Tooms Township		
Exploration Co., Owner or Optionee  Quinterra Resources Inc.		Date Submitted	Submitted by (Signature)		ft		Property Name Sylvanite Creek		
					ft				

Footage		Rock Type	Description Colour, grain size, texture, minerals, alteration, etc.	Placer Features Angle *	Core Specimen Footage †	Your Sample No.	Sample Footage		Sample Length	Assays ‡	
From	To						From	To		Au	
299'	341'	carbonatized ultramafic tuff	- well-layered, gray to green-black; layering at 65° to C.A. 318'6" to 319' -dark lamprophyre dike							ppb	
			329' to 331' -siliceous zone with diss. py (1%) -also chloritic layers		60338	329'	331'	2'		27	
			331' to 341' -green-gray, carbonatized ultramafic tuff								
341'	353'	siliceous iron formation	- bedded chert, sulfides (pyrite 15%), magnetite crystals in very siliceous massive ground mass; bedding at 60° to C.A.								
			341' to 345' -well-bedded, chert and pyrite (15%) with spots of magnetite (5%) -local veins		60339	341'	345'	4'		123	
			345' to 347'8" -same as above		60340	345'	347'8"	2'8"		132	
			347'8" to 353' -massive, siliceous, green-gray, exhalite; diss. py 1/2 to 3%; few veinlets		60341	347'8"	353'	5'4"		14	
353'	405'	mafic tuff	- dark green-black, layered to massive; few veins with pyritic and siliceous walls								
			355' to 356' -two qtz veins (1" and 2") with bleached and pyritic walls		60342	355'	356'	1'		75	
			392' to 393' -silicified, pyritic zone with veinlets; gray 1/2 sulfides		60343	392'	393'	1'		10	



Ontario  
Estate  
Reso

Drillhole  
Drilling  
Log

Fill in on  
every page

Page No.  
3

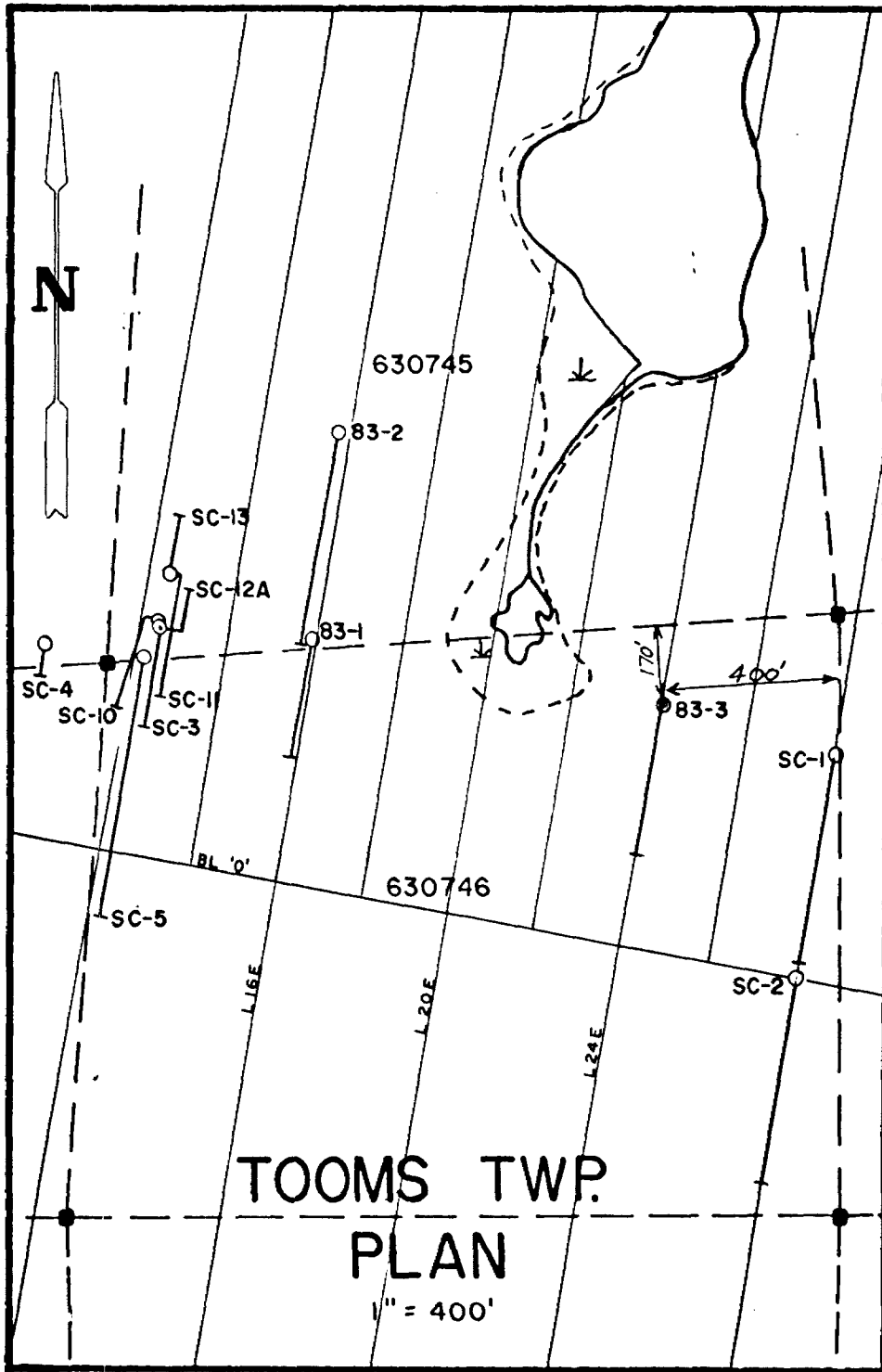
Drilling Company <b>Norex Drilling Limited</b>		Collar Elevation	Bearing of hole from true North 190° Azm.	Total Footage 437 ft.	Dip of Hole at Collar 45	Location of hole in relation to a fixed point on the claim.  550N 2400E 300'S and 400'W of No.1 post, claim P630746	Map Reference No.	Claim No. P630746
Date Hole Started Aug. 11, 1983	Date Completed Aug. 15, 1983	Date Logged Aug. 12/83	Logged by Dr. W. O. Karvinen		437 ft. 35		Location (Twp., Lot, Con. or Lot. and Long.)  Tooms Township	
Exploration Co., Owner or Options  Quinterra Resources Inc.		Date Submitted	Submitted by (Signature)		ft.			
					ft.		Property Name Sylvanite Creek	

Footage		Rock Type	Description Colour, grain size, texture, minerals, alteration, etc.	Piercing Footage Angle	Core Specimen Footage †	Your Sample No.	Sample Footage		Sample Length	Assays ‡	
From	To						From	To		Au	
405'	415'	siliceous exhalite	- gray to reddish-gray, massive, crystalline with diss. pyrite (1%) some chloritic-rich zones							ppb	
			405' to 410' -gray, massive, siliceous exhalite, 1% py; veinless			60344	405'	410'	5'	15	
			410' to 415' -same, but with a chlorite-rich section and becoming reddish down hole			60345	410'	415'	5'	21	
415'	437'	carbonatized mafic tuff	- gray-green, layered tuff; few barren qtz-carb veinlets								
	437'		End of hole								

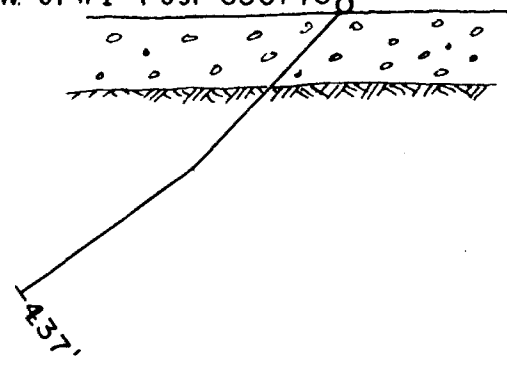
183 (82/8)

\* For features such as foliation, bedding, schistosity, measured from the long axis of the core.

‡ Additional credit available. See Assessment Work Regulations



DDH 83-3  
-45°, S10°W  
170' S, 400' W of #1 Post 630746



SECTION  
1" = 200'

*Ray Laughton*  
Jan 17/85



Drilling Company <b>Norex Drilling Limited</b>		Collar Elevation	Depth of hole from true North	Total Footage 601 ft.	Dip of Hole at Collar 45	Location of hole in relation to a fixed point on the claim.	Map Reference No.
Date Hole Started Aug. 7, 1983	Date Completed Aug. 10, 1983	Date Logged Aug. 8/83	Logged by Dr. W. O. Karvinen	350 n   35	601 n   37		1000N 1600E 600'N and 500'E of Post No. 3, claim P630745
Exploration No., Owner or Options <b>Quinterra Resources Inc.</b>		Date Submitted Jan 17/85	Submitted by (Signature) <i>Ray Yoshimura</i>				Location (Twp., Loc. Con or Lat and Long) <b>Tooms Township</b>
							Property Name <b>Sylvanite Creek</b>

Footage		Rock Type	Description Colour, grain size, texture, minerals, alteration, etc.	Plaster Footage Angle	Core Footage	Your Sample No.	Sample Footage		Sample Length	Assay	
From	To						From	To		Au	pph
0	102	overburden									
102	139'6"	carbonatized ultramafic ruff	- massive, gray to gray-green to fuchsite-bearing; - some talc-carbonate sections - magnesite, ankerite and 0-10% veining - few narrow dense exhalative bands								
	102'	to 107'	-massive talc-carbonate								
	107'	to 110'	-speckled gray carbonate; massive								
	110'	to 112'	-massive, siliceous exhalite with 3% diss. py -qtz veins with fuchsite and chlorite at 112' -vein zone is 8" wide			60526	110'	112'	2'		
	112'	to 129'	-mottled, gray carbonate; massive								
	129'	to 131'6"	-thinly-bedded, carbonatized ultramafic tuffs layered at 60° to C.A. -qtz veinless parallel to layering; pyritic walls -6" qtz vein with black chloritic walls and py at 131'			60527	129'	131'6"	2'6"		
	131'6"	to 137'	-gray, mottled, crystalline carbonate								
	137'	to 139'6"	-green carbonate with 35% qtz-ankerite vein material; some diss. fine pyrite			60528	137'	139'6"	2'6"		
139'6"	170	chert carbonate exhalite	- gray to light-gray, dense, chert and carbonate with 10-20% qtz veining - knife sharp contact with green carbonate								



Drilling Company <b>Norex Drilling Limited</b>		Collar Elevation	Secoring of hole from true North	Total Footage 601 ft.	Dip of Hole at Collar   45	Location of hole in relation to a fixed point on the claim.		Map Reference No.	Claim No. <b>P630745</b>
Date Hole Started Aug. 7, 1983	Date Completed Aug. 10, 1983	Date Logged Aug. 8/83	Logged by Dr. W. O. Karvinen		350 ft   35	1000N 1600E 600'N and 500'E of Post No. 3, claim P630745		Location (Twp., Lot, Con. or Lot and Long.)	
Exploration Co., Owner or Options  <b>Quinterra Resources Inc.</b>		Date Submitted	Submitted by (Signature)		601 ft   37			Tooms Township	
					ft			Property Name <b>Sylvanite Creek</b>	
					ft				

Footage From	To	Rock Type	Description Colour, grain size, texture, minerals, alteration, etc.	Placer Footage Angle *	Core Specimen Footage †	Your Sample No.	Sample Footage		Sample Length	Assays ‡	
							From	To		Au	
			139'6" to 141'			60529	139'6"	141'	1'6"		ppb
			141' to 144'			60530	141'	144'	3'		
			144' to 149'			60531	144'	149'	5'		45
			149' to 152'			60532	149'	152'	3'		37
			152' to 153'			60533	152'	153'	1'		18
			153' to 155'			60534	153'	155'	2'		37
			155' to 156'								
			156' to 157'			60535	156'	157'	1'		16
			157' to 161'			60536	157'	161'	4'		18
			161' to 163'			60537	161'	163'	2'		12
			163' to 165'			60538	163'	165'	2'		10
			165' to 170'			60539	165'	170'	5'		11

\* For features such as foliation, bedding, schistosity, measured from the long axis of the core.

† Additional credit available. See Assessment Work Regulations.



Drilling Company Norex Drilling Limited		Collar Elevation	Boring of hole from true North	Total Footage 601 ft.	Dip of Hole at Collar 45	Location of hole in relation to a fixed point on the claim.  1000N 1600E 600'N and 500'E of Post No. 3, claim P630745	Map Reference No.		Claim No. P630745		
Date Hole Started Aug. 7, 1983	Date Completed Aug. 10, 1983	Date Logged Aug. 8/83	Logged by Dr. V. O. Karvinen		350 ft   35		Location (Twp., Lot, Con. or Lot and Long.)  Tooms Township				
Exploration Co., Owner or Optionee  Quinterra Resources Inc.		Date Submitted	Submitted by (Signature)		601 ft   37		Property Name Sylvanite Creek				
					ft						
					ft						
					ft						
Footage		Rock Type	Description Colour, grain size, texture, minerals, alteration, etc.	Placer Footage Angle *	Core Specimen Footage †	Your Sample No.	Sample Footage		Sample Length	Assays ‡	
From	To						From	To		Au	
170'	182'	carbonatized ultramafic tuff	- gray, ed. to coarse-grained, crystalline; 10% barren veinlets								ppb
182'	213'	exhalite and mafic tuff	- alternating sequences of siliceous exhalite with minor green to carbonatized mafic tuff and mafic tuff with siliceous exhalite; generally pyritic; 5% qtz veining  - layering at 75° to C.A.								
			182' to 184'6" -sulfidic siliceous exhalite with bedded sulfides and smokey qtz; 5% py -greenish tuff component; cubic pyrite and magnetite			60540	182'	184'6"	2'6"		137
			184'6" to 187' -bleached, sericitic material from 184'6" to 186'6" then pyritic (1%) and magnetite (1%) in carbed siliceous tuff			60541	184'6"	187'	2'6"		10
			187' to 209' -carbonatized mafic tuff; 10% barren qtz veins; some bleached walls								
			209' to 213' -gray to green-gray, dense, crystalline, siliceous exhalite; small veins (10%); diss. py 1%			60542	209'	213'	4'		53
213'	222'	carbonatized tuff and lean iron formation	- gray-green carbonatized mafic and ultramafic tuff intercalated with lean sulfidic and oxide (magnetite) iron formation								
			213' to 227' -carbonatized ultramafic tuff; gray								
			227' to 234' -carbonatized mafic tuff								





Nat'l  
Res.

Drilling  
Log

Fill in on  
every page

Page No.  
4

Drilling Company Norex Drilling Limited		Collar Elevation	Bearing of hole from true North	Total Footage 601	Dip of Hole at Collar 45	Location of hole in relation to a fixed point on the claim. 1000N 1600E 600'M and 500'E of Post No. 3, claim P630745	Map Reference No.	Claim No. P630745
Date Hole Started Aug. 7, 1983	Date Completed Aug. 10, 1983	Date Logged Aug. 8/83	Logged by Dr. W. O. Karvinen	350 ft   35	601 ft   37		Location (Twp, Lot, Con. or Lat. and Long.) Tooms Township	
Exploration Co., Owner or Options Quinteria Resources Inc.		Date Submitted	Submitted by (Signature)			Property Name Sylvanite Creek		

Footage		Rock Type	Description Colour, grain size, texture, minerals, alteration, etc.	Placer Footing Angle	Core Section Footage †	Your Sample No.	Sample Footage		Sample Length	Au	Assays ‡
From	To						From	To			
			234' to 239' -dirty lean iron-formation; 1-5% py & cpy bedded at 60° to C.A.; chert, tuff and carbonate beds 1/2" to 1" thick -slightly magnetic			60543	234'	239'	5'	pph 45	
			239' to 241' -pyritic tuff (1%)			60544	239'	241'	2'	52	
			241' to 244' -gray carbonatized tuff								
			244' to 244'6" -py-chert I.F.			60545	244'	244'6"	6"	71	
			244'6" to 245'6" -dense, barren siliceous exhalite								
			245'6" to 249' -pyritic chert iron formation (3% py) well bedded; some slumping			60546	245'6"	249'	3'6"	151	
			249' to 265' -carbonatized mafic tuff; few barren qtz. veins up to 1" thick								
			265' to 267' -pyritic siliceous tuff; gray to green fine- grained; 1% diss. py; tr. cpy			60547	265'	267'	2'	284	
			267' to 272' -carbonatized, mafic tuff								
			270' to 271' -1" qtz vein at 50° to C.A. with pyritic walls (1%)			60548	270'	271'	1'	29	
272'	306'	siliceous exhalite	- light-gray to green-gray, massive, dense, crystalline and very siliceous, 10-15% white qtz veining with albite and ankerite; diss. py and cpy common; black tourmaline in veins								
			273'6" to 276'6" -gray dense siliceous exhalite with 4% diss. py; few veinlets			60549	273'6"	276'6"	3'	8	

783 (82/1)

\* For features such as foliation, bedding, schistosity, measured from the long axis of the core.

† Additional credit available. See Assessment Work Regulations

Drilling Company		Collar Elevation	Bearing of hole from true North	Total Footage	Dip of Hole at Collar	Location of hole in relation to a fixed point on the claim.	Map Reference No.	Claim No.			
Norex Drilling Limited				601	45		1000N 1600E 600'M and 500'E of Post No. 3, claim P630745		P630745		
Date Hole Started	Date Completed	Date Logged	Logged by			Location (Twp., Lot, Con. or Lat. and Long.)					
Aug. 7, 1983	Aug. 10, 1983	Aug. 8/83	Dr. W. O. Karvinen		35	Tooms Township					
Exploration Co., Owner or Optionee		Date Submitted	Submitted by (Signature)		37				Property Name		
Quinterra Resources Inc.						Sylvanite Creek					
Footage		Rock Type	Description Colour, grain size, texture, minerals, alteration, etc.	Plaster Footing Angle †	Core Specimen Footage †	Your Sample No.	Sample Footage		Sample Length	Assays ‡	
From	To						From	To		Au	
			276'6" to 279'			60550	276'6"	279'	2'6"	10	
			-fractured, gray siliceous exhalite with 40% qtz vein material (many parallel to C.A.) with pyrite (1%) and tr. cpy.								
			279' to 281'			60301	279'	281'	2'	64	
			-same with cubic py and albite in veins parallel to C.A.; tr. to 3% cpy								
			281' to 285'			60302	281'	285'	4'	33	
			-same as above								
			285' to 290'			60303	285'	290'	5'	27	
			-massive, gray siliceous exhalite; 1/2% py								
			290' to 290'8"			60304	290'	290'8"	8"	16	
			-siliceous qtz vein zone; cubic py								
			290'8" to 292'								
			-reddish, siliceous exhalite								
			292' to 297'			60305	292'	297'	5'	30	
			-pyritic, reddish to green-gray siliceous exhalite 1% diss. py; tr. cpy.								
			297' to 300'			60306	297'	300'	3'	23	
			-same with 1" qtz-albite vein with py and tr. cpy at 35° to C.A.								
			300' to 304'			60307	300'	304'	4'	16	
			-green-gray to reddish gray, massive siliceous exhalite; diss. py 1%; few veinlets								
			304' to 306'								
			-siliceous exhalite with tuff; gradational contact								
306'	333'	carbonatized mafic tuff	- fine-grained, dark green-black to gray-green mafic tuff; few barren veinlets here and there								
			324' to 326'6"								
			-reddish, siliceous exhalite; barren								
			330' to 333'								
			-well-bedded tuff (1/4 to 1/2" thick); 90° to C.A.								



Natural Resources

Diamond Drilling Log

Fill in on every page  
 Hk 83-2  
 Page No. 6

Drilling Company <b>Norex Drilling Limited</b>		Collar Elevation	Spacing of hole from true north	Total Footage 601	Dip of Hole at Collar 45	Location of hole in relation to a fixed point on the claim.  1000N 1600E 600'N and 500'E of Post No. 3, claim P630745	Map Reference No.	Claim No. P630745	
Date Hole Started Aug. 7, 1983	Date Completed Aug. 10, 1983	Date Logged Aug. 8/83	Logged by Dr. W. O. Karvinen	350	n   35		Location (Twp., Lot, Con. or Lat. and Long.)  Tooms Township		
Exploration Co., Owner or Options		Date Submitted	Submitted by (Signature)	601	n   37		Property Name Sylvanite Creek		
Quinterra Resources Inc.					n				

Footage		Rock Type	Description <small>Colour, grain size, texture, minerals, alteration, etc.</small>	Planar Feature Angle †	Core Specimen Footage †	Your Sample No.	Sample Footage		Sample Length	Assays ‡	
From	To						From	To		Au	ppb
333'	344'	iron formation with mafic tuff	- sulfidic chert iron formation with po, py and cpy and mafic tuff with interbedded chert and sulfides								
			333' to 336' -thinly-bedded chert and sulfides (po, py, cpy) up to 7% -some slumping; increasing tuff component down hole; magnetic			60308	333'	336'	3'	41	
			336' to 340' -barren mafic tuff; siliceous in places								
			340' to 343' -chloritic, sulfidic iron formation/mafic tuff 7% po, py and cpy; some veining and chert sections			60309	340'	343'	3'	45	
344'	367'	siliceous exhalite	- massive, gray to light-gray, siliceous crystalline exhalite; diss. py (1-2%) and tr. cpy; some qtz veining with cubic py								
			344' to 345'6" -barren, hybrid contact zone								
			345'6" to 350' -gray siliceous exhalite; 1% diss. py and few veins			60310	345'6"	350'	4'6"	30	
			350' to 353' -same; 20% vein material			60311	350'	353'	3'	11	
			353' to 356' -same; several good qtz vein (1-3") with cubic pyrite and diss. MoS <sub>2</sub>			60312	353'	356'	3'	25	
			356' to 359' -same; 20% veins with diss. MoS <sub>2</sub>			60312	356'	359'	3'		
			359' to 361' -dense, massive siliceous exhalite; 4% py			60313	359'	361'	2'	19	
			361' to 364' -cream-green, sericitic siliceous exhalite; foliated; also a section of chlorite-rich rock with cubic py			60314	361'	364'	3'	18	

† For features such as foliation, bedding, schistosity, measured from the long axis of the core.

‡ Additional credit available. See Assessment Work Regulations.



Drilling Company <b>Norex Drilling Limited</b>		Collar Elevation	Bearing of hole from true North	Total Footage 601	Dip of Hole at Collar   45	Location of hole in relation to a fixed point on the claim.  1000N 1600E 600'N and 500'E of Post No. 3, claim P630745	Map Reference No.
Date Hole Started Aug. 7, 1983	Date Completed Aug. 10, 1983	Date Logged Aug. 8/83	Logged by Dr. W. O. Karvinen	350 ft   35	601 ft   37		Location (Twp., Lot, Con. or Lat. and Long.)  Tooms Township
Exploration Co., Owner or Optionee  Quinterra Resources Inc.		Date Submitted	Submitted by (Signature)	ft	ft		Property Name Sylvanite Creek

Footage		Rock Type	Description Colour, grain size, texture, minerals, alteration, etc.	Planar Foliation Angle	Core Specimen Footage †	Your Sample No.	Sample Footage		Sample Length	Assays ‡	
From	To						From	To		Au	
			364' to 367' -dense, light-gray to reddish, siliceous exhalite mixed with very chloritic sections; diss. py; few 1/2" veins with pyritic walls			60315	364'	367'	3'	ppb	12
367'	554'	carbonatized mafic tuff	- mottled, greenish black, fine to med. grained; few barren veinlets; some with sulfides								
			367' to 383' -carbonatized mafic tuff								
			383' to 384'6" -8" qtz vein with pyritic wall rocks up to 4" wide			60316	383'	384'6"	1'6"		30
			384'6" to 386'6" -qtz. veinlets with bleached walls and py in carb tuff			60317	384'6"	386'6"	2'		25
			386'6" to 430' -carbonatized mafic tuff; few barren qtz veins (1/2") at 60° to C.A.								
			430' to 431'6" -bleached with qtz veins (1/2"-1 1/2") with well pyritized wall rocks; may be altered lamprophyre			60318	430'	431'6"	1'6"		222
			431'6" to 432' -lamprophyre with fbd. needles								
			432' to 437' -bleached pyritic zones and veins up to 1/2" in carb tuff; 1% diss. py; tr. cpy			60319	432'	437'	5'		71
			437' to 439' -same			60320	437'	439'	2'		103
			439' to 440' -carbonatized tuff								
			440' to 441' -qtz. veins with pyritic walls in mafic tuff			60321	440'	441'	1'		21

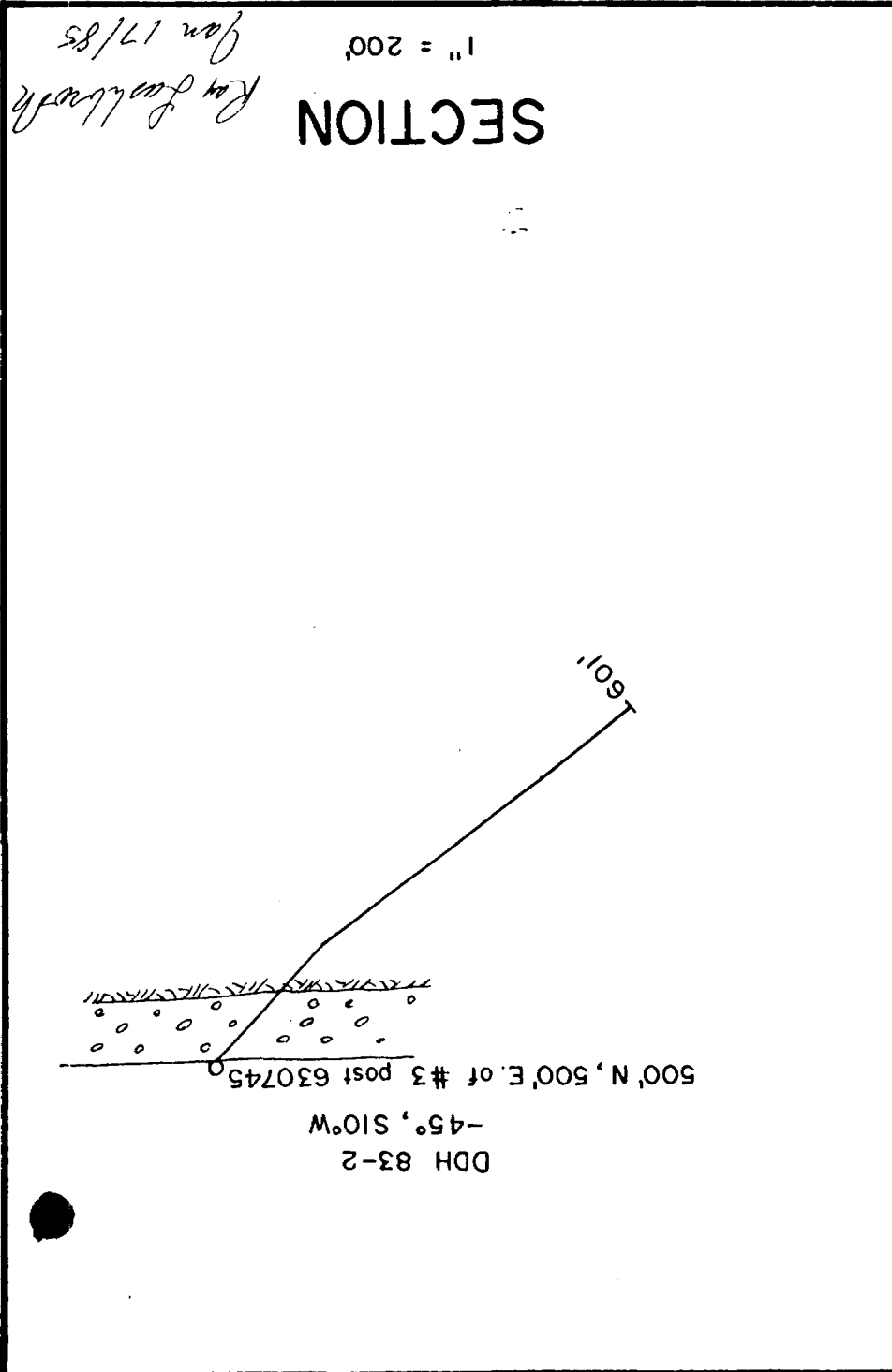
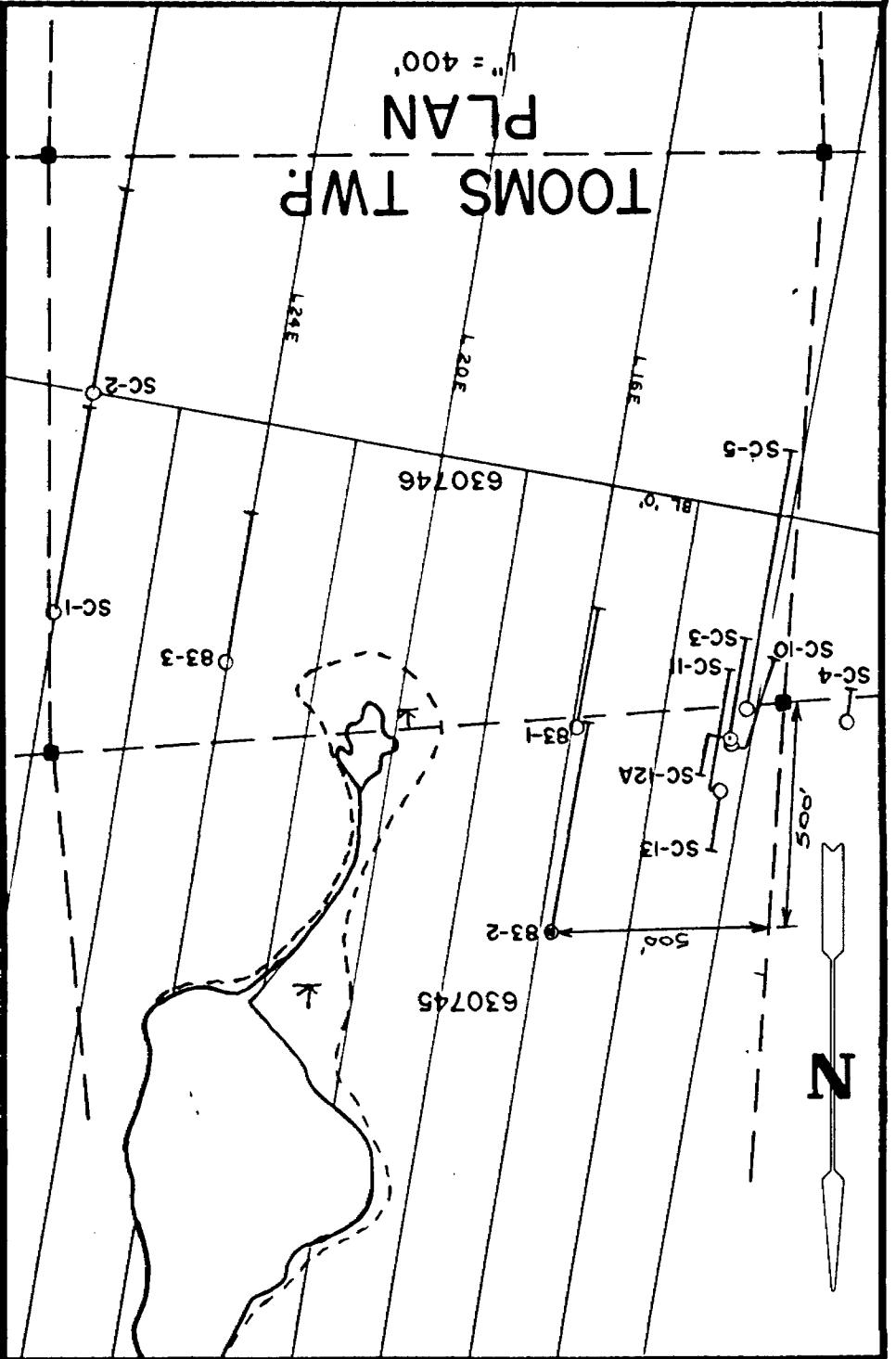


Drilling Company <b>Norex Drilling Limited</b>		Collar Elevation	Bearing of hole from true North	Total Footage <b>601 ft.</b>	Dip of Hole at Collar <b>45</b>	Location of hole in relation to a fixed point on the claim. <b>1000N 1600E 600'M and 500'E of Post No. 3, claim P630745</b>	Map Reference No.	Claim No. <b>P630745</b>
Date Hole Started <b>Aug. 7, 1983</b>	Date Completed <b>Aug. 10, 1983</b>	Date Logged <b>Aug. 8/83</b>	Logged by <b>Dr. W. O. Karvinen</b>	<b>350 ft   35</b>	Location (Twp., Lot, Con. or Lat. and Long.) <b>Tooms Township</b>			
Exploration Co., Owner or Optionee <b>Quinrerra Resources Inc.</b>		Date Submitted	Submitted by (Signature)	<b>601 ft   37</b>				
				<b>ft  </b>			Property Name <b>Sylvanite Creek</b>	

Footage		Rock Type	Description <small>Colour, grain size, texture, minerals, alteration, etc.</small>	Placer Feature Angle *	Core Specimen Footage †	Year Sample No.	Sample Footage		Sample Length	Assays ‡	
From	To						From	To		Au	ppb
			441' to 442' -carb. tuff								
			442' to 444' -bleached carb tuff with veinlets and pyritic walls			60322	442'	444'	2'	138	
			444' to 490' -green-black carb tuff with few qtz veins up to 1 1/2"; little pyrite								
			490' to 492' -1" barren qtz vein parallel to C.A.								
			492' to 554' -carb. and mafic tuff; few barren qtz veins -transitional contact into I.F.								
554'	561'	sulfidic iron formation	554' to 557' -contorted and brecciated chert beds with po, py and cpy (10%)			60323	554'	557'	3'	27	
			557' to 560' -same			60324	557'	560'	3'	576	
			560' to 561' -same but more chloritic tuff			60325	560'	561'	1'	706	
561'	601'	carbonatized mafic tuff	gray-green to greenish-black, fine to med.-gr. chloritic tuff; few barren veinlets and veins								
			561' to 577' -fine-grained gray tuff								
			577' to 601' -green chloritic tuff								
	601'		end of hole								

\* For features such as foliation, bedding, schistosity, measured from the long axis of the core.

† Additional credit available. See Assessment Work Regulations.





Ministry of  
Natural  
Resources

Diamond  
Drilling  
Log

Fill in on every page  
Hole No. SC-5  
Page No. 1

Drilling Company <b>DOMINIK DRILLING (1981) INC.</b>		Collar Elevation	Heading of hole from true North 190°	Total Footage 787	Dip of Hole at Collar 45	Location of hole in relation to a fixed point on the claim. 80'E of No. 3 post, Claim No. P 630745 on S. claim boundary	Map Reference No. 2121	Claim No. P 630745
Date Hole Started January 13, 1983	Date Completed January 19, 1983	Date Logged Feb. 8/83	Logged by D. G. Innes		787 N 40		Location (Twp., Lot, Con. or Lat. and Long.) <b>TOOMS TWP.</b>	
Exploration Co., Owner or Optionee <b>QUINTERRA RESOURCES</b>		Date Submitted	Submitted by (Signature) <i>D. G. Innes</i>		N N N		Property Name <b>SYLVANITE CREEK</b>	

Footage		Rock Type	Description <small>Colour, grain size, texture, minerals, alteration, etc.</small>	Planar Footing Angle	Core Section Footage †	Your Sample No.	Sample Footage		Sample Length	Au pph	Assays †
From	To						From	To			
0	104'	OVR	- Casing								
104'	106'3"	Cherty tuff	- light grey massive vfg chert - few white feld 2 grains thru section to 1/2 mm - cut by white QV's which carry 1% py and vein has a dark grey-blue alt'n halo - stringers at 80° to 45° - silicified - lower contact is a qtz vein and is sharp at 50° - lower 6" carries 5% py			59501	104'	106'3"	2'3"	84	
106'3"	128'	Mafic tuff (basalt flows)	- fg dk green chloritic mafic tuff (may be some flows) - massive; foliated at 70°; few dissem py xles - cut by a few QV stringers - white Qtz margins with grey qtz centres - all carry py + sericitic halos - minor carb alt'n			59502	106'3"	108'2"	1'11"	18	
						59503	115'	116'6"	1'6"	8	
			109' to 110'8": grey to purple silicified tuff with inclusions of relatively unaltered mafic tuff - colour is very variable - minor sericite - py to 1% thru out								
			115'3" to 116'4": ditto above - very dark purple and vfg - contacts are irregular but sharp								

*Ray Lushbrook*  
Jan 17/85



Ministry of  
Natural  
Resources

Diamond  
Drilling  
Log

Fill in on every page Hole No. SC- 5 Page No. 2

Drilling Company <b>DOMINIK DRILLING (1981) INC.</b>		Collar Elevation	Bearing of hole from true North <b>190°</b>	Total Footage <b>787</b>	Dip of Hole at Collar <b>45</b>	Location of hole in relation to a fixed point on the claim. <b>80' E of No. 3 post Claim No. P 630745 on S. claim boundary</b>	Map Reference No. <b>2121</b>	Claim No. <b>P 630745</b>				
Date Hole Started <b>January 13, 1983</b>	Date Completed <b>January 19, 1983</b>	Date Logged <b>Feb. 8/83</b>	Logged by <b>D. G. Innes</b>		<b>787</b> n   <b>40</b>		Location (Twp., Lot, Con. or Lot and Long.) <b>TOOMS TWP.</b>					
Exploration Co., Owner or Options <b>QUINTERRA RESOURCES</b>		Date Submitted	Submitted by (Signature)		n		Property Name <b>SYLVANITE CREEK</b>					
Footage From To		Rock Type	Description Colour, grain size, texture, minerals, alteration, etc.			Pillar Footing Angle	Core Specimen Footage	Your Sample No.	Sample Footage From To	Sample Length	AU ppb	Assays
128'	134'	Intermediate tuff	- light grey carbonate altered mafic to intermediate tuff - fg and massive with very few QV stringers - minor disse py to 1% and locally to 3%					59504	129'6" 134'	4'6"	21	
134'	144'	Siliceous IF	- siliceous banded magnetite (5%) IF - chloritic beds to 1" locally - bedding at 45° and avg 1" - slumped and contorted bedding - magnetite as discrete grains mainly in siliceous beds					59505	134' 139'	5'	19	
			135'4": 1 1/2' of massive fg grey siliceous tuff					59506	139' 144'	5'	27	
			139': 6" white QV at 20° - sugary Qtz									
			140'8": 2' of carb altered mafic chloritic tuff - IF bedding at 10° to core axis along this section - chloritic beds are very magnetic									
144'	147'	Carb tuff	- fg light brown-grey massive carbonate altered tuff - has a very distinct colour - transitional into lower sericitic tuff - very few QV stringers									
147'	155'	Sericitic tuff	- fg light yellow-grey sericitic and siliceous tuff - 1% py locally - few chloritic interbeds at 45° - QV stringers are grey Qtz + py - lower contact is a QV at 45°					59507	147' 152'	5'	33	
								59508	152' 157'	5'	38	





Ministry of  
Natural  
Resources

Diamond  
Drilling  
Log

Fill in on  
every page

Hole No. SC-5 Page No. 3

Drilling Company <b>DOMINIK DRILLING (1981) INC.</b>		Collar Elevation	Bearing of hole from true North 190°	Total Footage 787	Dip of Hole at Collar 45	Location of hole in relation to a fixed point on the claim.  80°E of No. 3 post Claim No. P 630745 on S. claim boundary	Map Reference No. 2121	Claim No. P 630745
Date Hole Started January 13, 1983	Date Completed January 19, 1983	Date Logged Feb. 8/83	Logged by D. G. Innes		787 n.   40		Location (Twp., Lot, Con. or Lat. and Long.)  TOOMS TWP.	
Exploration Co., Owner or Options  QUINTERRA RESOURCES		Date Submitted	Submitted by (Signature)		n.		Property Name SYLVANITE CREEK	

Footage		Rock Type	Description Colour, grain size, texture, minerals, alteration, etc.	Placer Footage Angle	Core Specimen Footage	Your Sample No.	Sample Footage		Sample Length	Au ppb	Assays
From	To						From	To			
154'	160'	Cherty tuff	- fg white to blue-grey massive rexlized chert tuff - 5% dissem py + odd grain of Po + cpy - few white to grey QV stringers			59509	157'	160'	3'	185	
			157': chloritic and siliceous pyritic tuff - 25% chlorite + 15% py + 20% QV stringers - py looks bedded in sil tuff and dissem in chloritic tuff								
			158' to 160': ghosty white feld pheno's? xle tuff or porphyry								
160'	161'4"	Sericitic tuff	- layered light yellow sericitic and siliceous tuff with interbedded chloritic mafic tuff - cut by numerous QV stringers with py + sericitic halos - lower contact at 80° and sharp - to 5% py locally			59510	160'	162'	2'	110	
161'4"	164'8"	Siliceous IF	- layered magnetite siliceous IF - to 5% magnetite - chloritic magnetic interbeds - bedding is somewhat contorted - 2% py along siliceous beds			59511	162'	165'	3'	47	



Ministry of  
Natural  
Resources

Diamond  
Drilling  
Log

Fill in on every page Hole No. SC-5 Page No. 4

Drilling Company <b>DOMINIK DRILLING (1981) INC.</b>		Collar Elevation	Heading of hole from true North <b>190°</b>	Total Footage <b>787</b>	Dip of Hole at Collar <b>45</b>	Location of hole in relation to a fixed point on the claim. <b>80°E of No. 3 post Claim No. P 630745 on S. claim boundary</b>	Map Reference No. <b>2121</b>	Claim No. <b>P 630745</b>
Date Hole Started <b>January 13, 1983</b>	Date Completed <b>January 19, 1983</b>	Date Logged <b>Feb. 8/83</b>	Logged by <b>D. G. Innes</b>		<b>787 n.</b>		Location (Twp., Lot, Con. or Lat. and Long.) <b>TOOMS TWP.</b>	
Exploration Co., Owner or Optionee <b>QUINTERRA RESOURCES</b>		Date Submitted	Submitted by (Signature)		<b>n.</b>		Property Name <b>SYLVANITE CREEK</b>	
					<b>n.</b>			

Footage		Rock Type	Description Colour, grain size, texture, minerals, alteration, etc.	Placer Footage Angle	Core Section Footage †	Your Sample No.	Sample Footage		Sample Length	Au pph	Assays †
From	To						From	To			
164'8"	176'4"	Sericitic tuff	- massive lg dark grey sericitic tuff with virtually no veining - more QV stringers down the hole			59512	170'4"	176'4"	6'	36	
			170'4": 2" silicified QV zone + minor py								
			170'9": } grey QV at 60° + minor py								
			- all QV stringers (big or small) have sericitic and silicified halo with fine dissem py								
174'6"	180'7"	Silicified tuff	- massive light grey-white, mottled silicified and mildly sericitic altered tuff - 20% QCV (or white albite) veins at 45° mainly - 5% dissem py throughout - minor py - lower contacts is QV + chlorite + minor carbonate - upper contact is QV + sericitic			59513	176'4"	180'7"	4'3"	56	
180'7"	217'4"	Mafic tuff-basalt	- massive lg dk green basalt-tuff - chloritic with minor carb alteration - few stringers and most are Qtz + chlorite with very minor sulphides - few QCV's with sericitic alt'n + py at 195'8" to 198'			59514	195'4"	198'6"	2'2"	44	
			200' to 202': more carbonate altered and foliated at 45° to 50°			59515	202'	205'5"	3'5"	70	











MINISTRY OF  
Natural  
Resources  
Ontario

Drilling  
Log

Fill in on every page  
Hole No. SC-5  
Page No. 9

Drilling Company <b>DOMINIK DRILLING (1981) INC.</b>		Collar Elevation	Logging of hole from true North 190°	Total Footage 787	Dip of Hole at Collar 45	Location of hole in relation to a fixed point on the claim. 80'E of No. 3 post Claim No. P 630745 on S. claim boundary	Map Reference No. 2121	Claim No. P 639745
Date Hole Started January 13, 1983	Date Completed January 19, 1983	Date Logged Feb. 8/83	Logged by D. G. Innes		787 n   40		Location (Twp., Lot, Con. or Lat. and Long.) TOOMS TWP.	
Exploration Co., Owner or Optionee QUINTERRA RESOURCES		Date Submitted	Submitted by (Signature)		n		Property Name SYLVANITE CREEK	

Footage		Rock Type	Description <small>Colour, grain size, texture, minerals, alteration, etc.</small>	Placer Footage Angle	Core Specimen Footage	Your Sample No.	Sample Footage		Sample Length	Au ppb	Assays ?
From	To						From	To			
			283'6": 2" QV + chlorite at 30°								
284'5"	287'6"	Siliceous IF	- interbedded mafic and siliceous pyritic tuff-weak IF - bedding to 1" at 45° - bedding is locally contorted - 2% py as large discrete xles to 5mm - mildly magnetic			59525	280'4"	283'8"	3'4"	14	
287'6"	305'	Intermed. tuff	- mildly sericitic and carbonate altered intermediate tuff - massive fg light green to dark green - cut by a few QV and chlorite stringers								
305'	306'9"	Silicified tuff-porphry	- light grey to white fg silicified and mildly sericitic mottled tuff-porphry - white feldspar pheno's in a fg silicified matrix - intensely fractured - core breaks at every angle - fine dissem py to 1%			59527	304'6"	309'9"	5'3"	36	
306'9"	316'	Sericitic tuff	- fg light grey sericitic (and silicified) tuff - upper contact is a QV at 45° - minor carb alteration - increasing down the hole - cut by 10% QV's to 1" - minor dissem py: mainly in stringers			59528	309'9"	314'9"	5'	11	
316'	316'10"	Mafic tuff	- interbed of chloritic and mildly carbonate altered mafic tuff - 2% py as dissem xles - upper contact at 80° and pyritic - lower contact is a grey QV at 45°			59529	315'10"	317'	1'2"	4	







Ministry of  
Natural  
Resources

Drilling  
Log

Fill in on every page  
Hole No. SC-5  
Page No. 11

Drilling Company <b>DOMINIK DRILLING (1981) INC.</b>		Collar Elevation	Heading of hole from true North 190°	Total Footage 787	Dip of Hole at Collar 45	Location of hole in relation to a fixed point on the claim.  80°E of No. 3 post  Claim No. P 630745  on S. claim boundary	Map Reference No. 2121	Claim No. P 639745			
Date Hole Started January 13, 1983	Date Completed January 19, 1983	Date Logged Feb. 8/83	Logged by D. G. Innes		787 N/40		Location (Twp., Lot, Con. or Lat. and Long)  TOOMS TWP.				
Exploration Co., Owner or Optionee  QUINTERRA RESOURCES		Date Submitted	Submitted by (Signature)		N/		Property Name SYLVANITE CREEK				
Footage		Rock Type	Description Colour, grain size, texture, minerals, alteration, etc.		Placer Footage Angle	Core Specimen Footage	Your Sample No.	Sample Footage From To	Sample Length	Au ppb	Assays
328'2"	331'	Siliceous porphyry	- as before - upper contact at 30° - lower contact is at 50° - core zone of pink felsite-aplite over 1' - fine dissem py to 1% throughout - few qtz stringers								
331'	362'8"	Intermediate tuff	- mildly sericitic, fg massive tuff - few QV + chlorite stringers 5% and all about 1 to 3mm - minor chlorite on fractures - very minor py as individual xles				59532	335' 337'	2'	14	
			325' to 337': pink and white aplite-felsite as before - contacts at 90° - dissem py to 1%								
			339'6" to 341'8": grey aplite-porphyry as before - contacts at 90°				59533	339'6" 342'	2'6"	38	
			355'4": 3" QCV's at 70° to 90° + minor py + cpy - qtz is grey				59534	355' 356'	1'	84	
			361'3": 2 1/2" grey feld porphyry dike as before - upper contact is in white QV - lower contact sharp at 70°				59535	361'2" 366'	4'10"	14	
362'8"	371'4"	Aplite-felsite	grey siliceous feld porphyry-aplite as before - minor dissem py to 1% - very few QV stringers - some fg sections or patches - all fractures and QV's have a bleached halo - lower contact sharp at 45°				59536	366' 371'4"	5'4"	55	







Ministry of  
Natural  
Resources

Drilling  
Log

Fill in on  
every page

Hole No.  
SC-5  
Page No.  
14

Drilling Company <b>DOMINIK DRILLING (1981) INC.</b>		Collar Elevation	Bearing of hole from true North 190°	Total Footage 787	Dip of Hole at collar 45	Location of hole in relation to a fixed point on the claim.  80°E of No. 3 post  Claim No. P 630745  on S. claim boundary	Map Reference No. 2121	Claim No. P 639745
Date Hole Started January 13, 1983	Date Completed January 19, 1983	Date Logged Feb. 8/83	Logged by D. G. Innes		787 N 40		Location (Twp., Lot, Con. or Lat. and Long.)  TOOMS TWP.	
Exploration Co., Owner or Optionee  QUINTERRA RESOURCES		Date Submitted	Submitted by (Signature)		N N N		Property Name SYLVANITE CREEK	

Footage		Rock Type	Description <small>Colour, grain size texture, minerals, alteration, etc.</small>	Placer Footage Angle	Core Section Footage	Your Sample No.	Sample Footage		Sample Length	Au ppb	Assays
From	To						From	To			
435'4"	456'	Basalt-mafic tuff	- dk green, lg chloritic basalt flows + interflow mafic tuffs - numerous barren white to clear QV stringers eg. 442'								
			452'9" to 453'2": 60% QV stringers plus patches of sericitic tuff - + chlorite - very minor py			59547	450'3"	451'	1'9"	47	
			453'2" to 456': lighter grey - progressively more sericitic and carb altered			59548	452'6"	454'8"	2'2"	8	
456'	466'3"	Sericitic Intermediate tuff	- light grey-yellowish - sericitic and mildly carb altered tuff - massive - some silicified sections around veins - numerous QV stringers with bleached halos - much of the Qtz is dark grey + tourmaline			59549	456'	461'	5'	69	
						59550	461'	466'	5'	16	
466'3"	467'10"	Cherty tuff	- laminated cherty-siliceous tuff - bedding to 1" at 45° - grey to dark grey to purple chert - vfg flinty beds mainly - dissem py + minor po + cop - sulphides are mainly bedded - very few stringers - some very thin brown beds may be sphalerite			59601	466'	468'3"	2'3"	60	





Ministry of  
Natural  
Resources

Drilling  
Log

Fill in on  
every page

Hole No.  
SC-5

Page No.  
16

Drilling Company <b>DOMINIK DRILLING (1981) INC.</b>		Collar Elevation	Bearing of hole from true North 190°	Total Footage 787	Dip of Hole at Collar 45°	Location of hole in relation to a fixed point on the claim. 80°E of No. 3 post Claim No. P 630745 on S. claim boundary	Map Reference No. 2121	Claim No. P 639745
Date Hole Started January 13, 1983	Date Completed January 19, 1983	Date Logged Feb. 8/83	Logged by D. G. Innes		787 N 40°		Location (Twp., Lot, Con. or Lat. and Long.) TOOMS TWP.	
Exploration Co., Owner or Optionee QUINTERRA RESOURCES		Date Submitted	Submitted by (Signature)		N	Property Name SYLVANITE CREEK		

Footage		Rock Type	Description <small>Colour, grain size, texture, minerals, alteration, etc.</small>	Placer Footage Angle	Core Specimen Footage	Your Sample No.	Sample Footage		Sample Length	AU ppb	Assays
From	To						From	To			
490'8"	518'9"	Mafic tuff-basalt	- chloritic fg to mfg mafic tuff and prob some basalt flows - very minor dissem py - few QV + chlorite stringers mainly at 45°			59605	492'	502'	10'	60	
518'9"	521'	Siliceous cherty tuff	- finely laminated to thinly bedded siliceous and cherty tuff - as before, chert beds are multi coloured - 1% to 3% bedded py; minor py in a few x-cutting stringers - odd grain of cpy + po - lower 6" is sericitic and somewhat contorted - lower contact at 30°								
521'	522'10"	Massive chert	- vfg massive grey flint - chert cut by white QV stringers - this should be a very distinct marker horizon - 1% py as very fine disseminations								
522'10"	527'	Siliceous cherty tuff	- as before - upper contact is gradational - bedding is contorted - 1 to 5% py in fractures and along bedding - 15% white QV stringers carry 1% py + 1cpy + 1% po - few areas of massive sulfide blebs			59607	522'10"	527'	4'2"	55	
527'	529'8"	Graphitic tuff	- highly deformed - slumped graphitic-pyritic tuff-very siliceous - 5% + minor pg + cpy (to 1%)			59608	527'	529'8"	2'8"	119	











Ministry of  
Natural  
Resources

Drilling  
Log

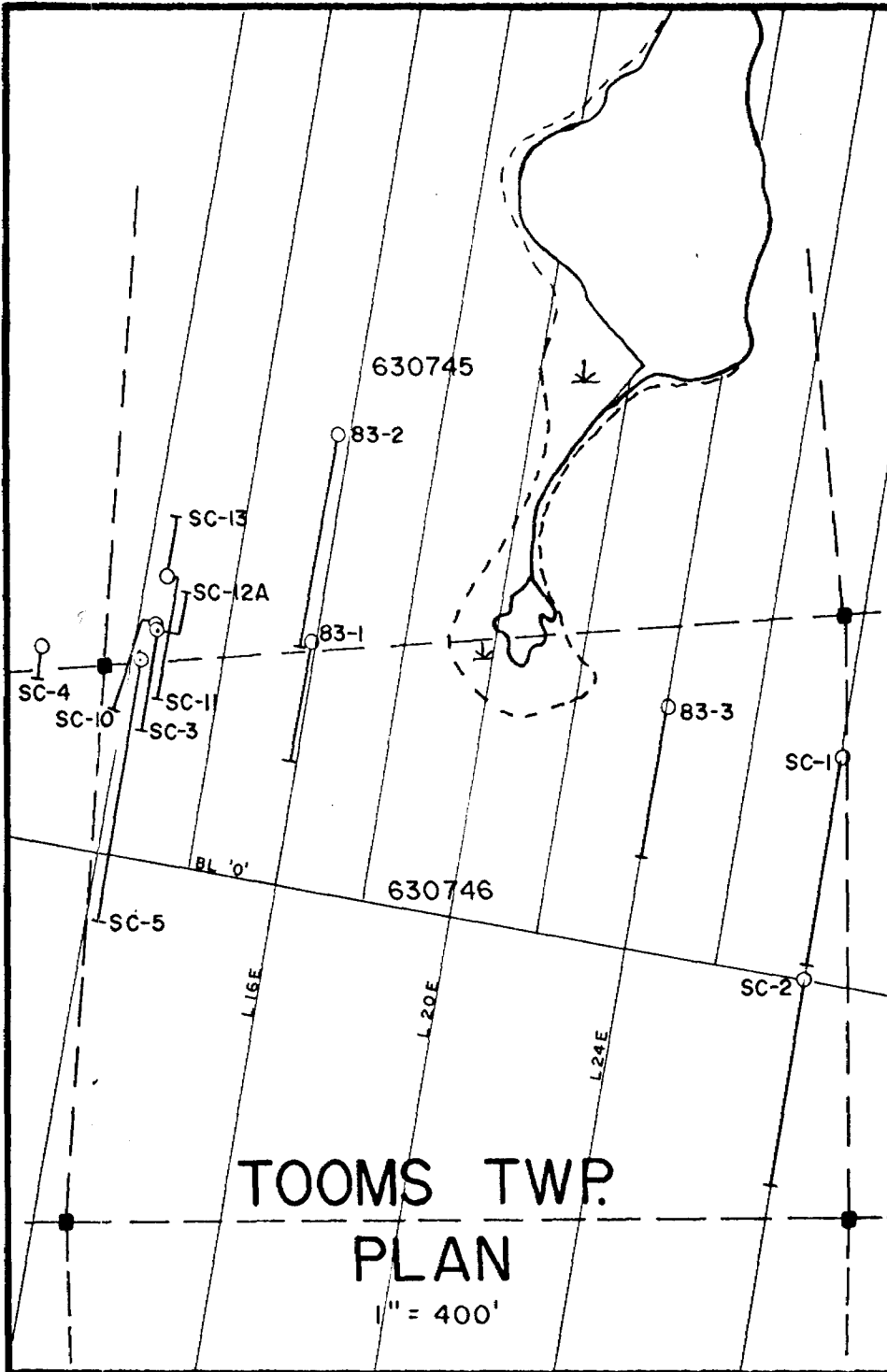
Fill in on every page

Map No. SC-5  
Page No. 20  
Claim No. P 639745

Drilling Company <b>DOMINIK DRILLING (1981) INC.</b>		Collar Elevation	Heading of hole from true North 190°	Total Footage 787	Dip of Hole at Collar 45°	Location of hole in relation to a fixed point on the claim.  80° E of No. 3 post  Claim No. P 630745  on S. claim boundary	Map Reference No. 2121	Location (Twp., Lot, Con. or Lat. and Long.)  TOOMS TWP.
Date Hole Started January 13, 1983	Date Completed January 19, 1983	Date Logged Feb. 8/83	Logged by D. G. Innes		787 N/40		Property Name SYLVANITE CREEK	
Exploration Co., Owner or Optionee  QUINTERRA RESOURCES		Date Submitted	Submitted by (Signature)		N/			

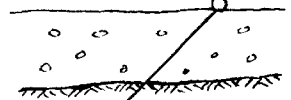
Footage		Rock Type	Description <small>Colour, grain size, texture, structure, alteration, etc.</small>	Placer Footing Angle °	Core Specimen Footage 1	Your Sample No.	Sample Footage		Sample Length	Assays 1		
From	To						From	To		Au	Cu	Ag
660'	662'8"	Mafic tuff	- chloritic mafic tuff with 30% siliceous interbeds - 5% disseminated py as xls in last 1 1/2' - few white qtz stringers to 1/2" + tourmaline + chlorite + py + minor sphalerite on fractures			59627	660'	662'	2'	80		
662'8"	676'5"	Basalt-mafic tuff	- carb altered, chloritic basalt flows or mafic tuff - massive fg to mfg - few QV + chlorite + minor py stringers									
676'3"	679'10"	Siliceous IF	- disseminated discrete grains of magnetite to 5% in dark grey silicified - cherty tuff - minor po - bedding at 45° - intensely silicified - few thin chloritic interbeds which are carb altered			59628	676'	680'	4'	448		
679'10"	689'5"	Mafic tuff Basalt	- dk green - carb altered mafic tuff - foliated at 55° to 80° - prob a few massive flows - few white barren QV's at 45' to 2"									
689'5"	691'3"	Siliceous IF	- as above - bedding at 45° - 5 to 10% disseminated magnetite grains in thinly bedded siliceous tuff - some white carbonate-rexillized - minor po - siliceous beds - rexillized			59629	689'5"	691'5"	2'	62		





DD.H. SC-5  
 -45°, S 10°W

80' E. of #3 Post 630745



787'

SECTION

1" = 200'

*Ray L. Wood*  
 Jan 17/85

Drilling Company Norex Drilling Ltd.		Collar Elevation	Bearing of hole from true North 198 azm.	Total Footage 300 ft.	Dip of Hole at Collar 45	Location of hole in relation to a fixed point on the claim.  1240E, 520N 120'M and 90'E of Post No. 3 claim (P630746)	Map Reference No.	Claim No. P630746
Date Hole Started Sept. 17, 1983	Date Completed Sept. 19, 1983	Date Logged Sept. 19/83	Logged by W. O. Karvinen		150 m   44		Location (Twp., Lot, Con. or Lat. and Long.)  Tooms Township	Property Name Sylvanite Creek
Exploration Co. Owner or Optionee Quinterra Resources Inc.		Date Submitted	Submitted by (Signature)		300 m   42			
					n			

Footage		Rock Type	Description Colour, grain size, texture, minerals, alteration, etc.	Placer Features Angle *	Core Specimen Footage †	Your Sample No.	Sample Footage		Sample Length	Assays ‡	
From	To						From	To		Au	
0'	98'	overburden								ppb	
98'	119'	carbonatized mafic tuff	- foliated to massive; gray-green; mad.-gr. - few barren qtz. veinlets - 108' -1" barren qtz-carbonate vein at 45° to C.A. - 109' -two smaller veins of same								
119'	209'	siliceous exhalite and carb. tuff	- massive, fine-grained, light gray qtz-carb rock, fine diss. pyrite (<4%) - thin layers (~5') of carb. mafic tuff 119' - 122' -fine-gr. massive siliceous exhalite <4% py 122' - 129'4" -massive to foliated carb. mafic tuff 129'4" - 130' -pyritic chert-carbonate; ~8% cubic and massive bedded pyrite, some chloritic tuff 130' - 135' -gray, massive siliceous exhalite with some qtz. carbonate-albite veining; pyrite up to 9% in places 135' - 140' -pyritic siliceous exhalite with intercalations of pyritic carb. tuff, ~1% pyrite in places 140' - 142' -pyritic carb. tuff; 1-2% pyrite with thin chert lenses; complexly folded 142' - 145' -massive carb. mafic tuff								
						60346	119'	122'	3'	26	
						60347	129'4"	130'	8"	0.172 oz.	
						60348	130'	135'	5'	84	
						60349	135'	140'	5'	118	
						60350	140'	142'	2'	40	

P63 (02/71)

\* For features such as foliation, bedding, schistosity, measured from the long axis of the core.

† Additional credit available. See Assessment Work Regulations.

Ray Lushbrook  
Jan 17/85

Footage		Rock Type	Description Colour, grain size, texture, minerals, alteration, etc.	Placer Footage Angle*	Core Specimen Footage †	Your Sample No.	Sample Footage		Sample Length	Assays ‡	
From	To						From	To		Au	
			145' -147' -layered chert and carb. mafic tuff; diss. py (<1%)			60551	145'	147'	2'	80	
			147' -151' -coarse cubic pyrite in carb. mafic tuff inter-layered with chert-carbonate -also some veins; 2% py			60552	147'	151'	4'	383	0.011
			151' -156' -coarse to fine-diss. py in carb. mafic tuff and siliceous exhalite; some veining; 2% py			60553	151'	156'	5'	147	
			156' -159' -gray, massive siliceous exhalite diss. py. ~1%; few veinlets at various angles			60554	156'	159'	3'	101	
			159' -168' -carb. mafic tuff; few veinlets								
			168' -173' -gray massive siliceous exhalite, some qtz, carb. veins at 70° to C.A.			60555	168'	173'	5'	33	
			173' -180' -carb. mafic tuff; few veinlets and some diss. py								
			180' -185' -gray, siliceous exhalite with several 1/4" to 3/4" veins of qtz, albite-ankerite with cubic and diss. pyrite; tr. cpv			60556	180'	185'	4'	108	
			185' -190' -same as above			60557	185'	190'	5'	62	
			190' -193' -same, but two good vein zones ~4" wide with 8-10% massive pyrite in qtz.			60558	190'	193'	3'	67	
			193' -204' -carb. mafic tuff; some bleaching; few barren veinlets								

783 (8/71)

\* For features such as foliation, bedding, schistosity, measured from the long axis of the core.

† Additional credit available. See Assessment Work Regulations.

Drilling Company <b>Horex Drilling Ltd.</b>		Collar Elevation	Bearing of hole from true North	Total Footage 300 ft.	Dip of Hole at Collar	Location of hole in relation to a fixed point on the claim.	Map Reference No.	Claim No.			
Date Hole Started	Date Completed	Date Logged	Logged by				Location (Twp., Lot, Con. or Lat. and Long.)				
Exploration Co., Owner or Options		Date Submitted	Submitted by (Signature)				Tooms Township				
<b>Quinterra Resources Inc.</b>							Property Name <b>Sylvanite Creek</b>				
Footage		Rock Type	Description Colour, grain size, texture, minerals, alteration, etc.	Placer Footage Angle	Core Specimen Footage †	Your Sample No.	Sample Footage		Sample Length	Assays ‡	
From	To						From	To		Au	
			204' -209' -gray, massive siliceous exhalite; ½ py. small veinlets at 45° to C.A.; 1½" qtz vein at 204' and a 1" vein at 206'			60559	204'	209'	5'	26	
209'	236'	carb. mafic tuff	- gray-green to green-black, med.-grained; some barren qtz. veins (<1")								
236'	252'	siliceous exhalite qtz. vein zone	- very dark chloritic contacts on both sides; - abundant cubic pyrite, extensive veining; - massive and siliceous ~5% py (average); foliation at 60° to C.A.								
			236' -238' -dark, pyritic chloritic tuff cut by smokey qtz. veins (1" to 1½") at 80° to C.A. -coarse cubic pyrite ~5%			60560	236'	238'	2'	213	
			238' -241' -qtz vein zone with pale-green sericitic walls and inclusions; 1½ feet of vein qtz with pyrite; ~5% pyrite			60561	238'	241'	3'	304	
			241' -245' -sericitic and chloritic tuff with siliceous exhalite and veinlets at 70° to C.A. ~1% pyrite			60562	241'	245'	4'	155	
			245' -250'6" -gray massive siliceous exhalite; veinlets and foliation at 60° to C.A.; ½% diss. py			60563	245'	250'6"	5'6"	70	
			250'6"-252' -coarse pyritic qtz vein (8") with layers of sericitic tuff; in contact with dark chloritic, pyritic tuff; ~5% py; veins at 80° to C.A.			60564	250'6"	252'	1'6"	0.102	oz.

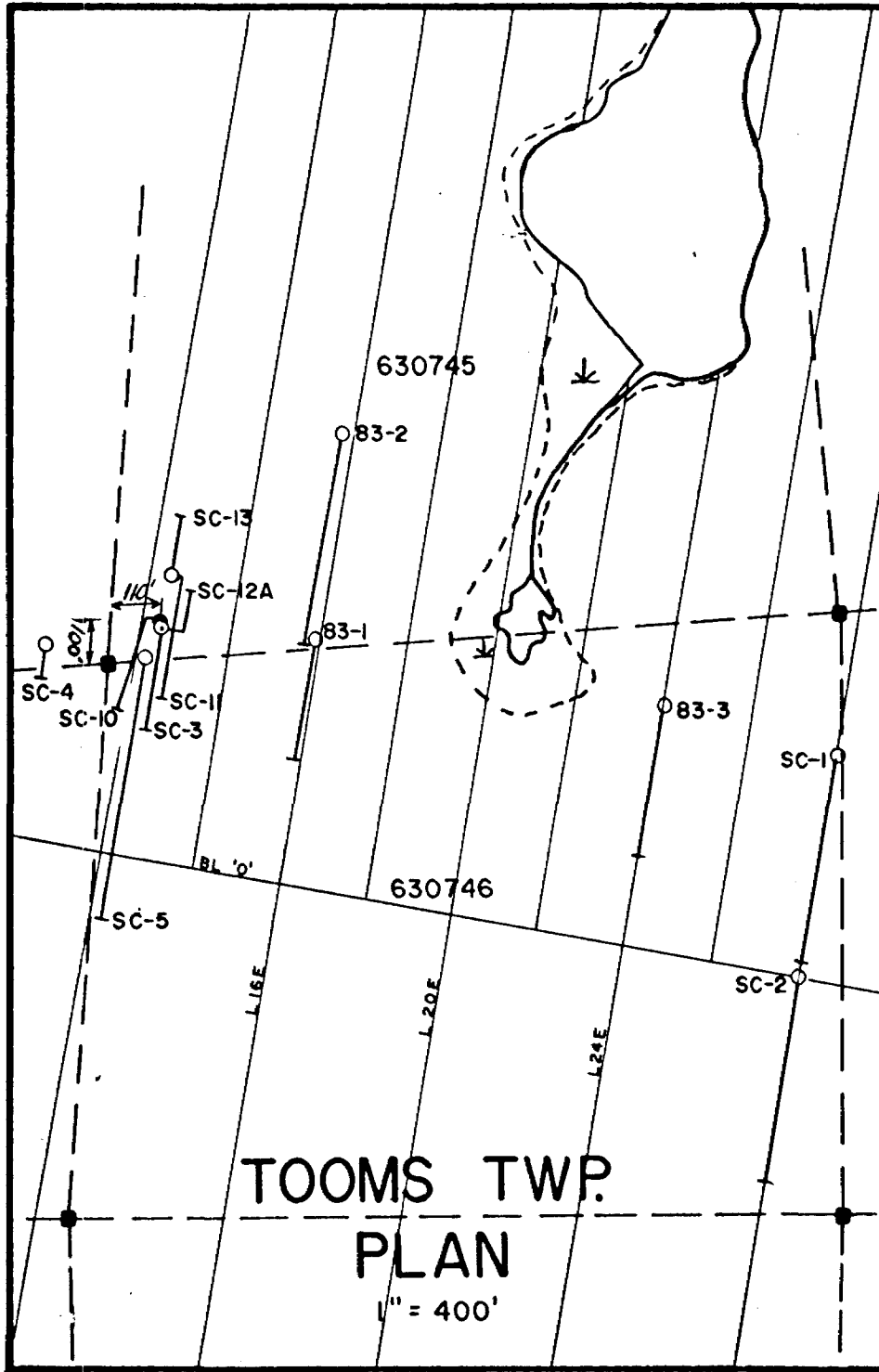
Drilling Company <b>Norax Drilling Ltd.</b>		Collar Elevation	Bearing of hole from true North	Total Footage <b>300 ft.</b>	Dip of Hole at Collar	Location of hole in relation to a fixed point on the claim.	Map Reference No.	Claim No.				
Date Hole Started	Date Completed	Date Logged <b>Sept. 20/8</b>	Logged by <b>W. O. Karvinen</b>		P.		Location (Twp., Lot, Con. or Lat. and Long.) <b>Tooms Township</b>					
Exploration Co., Owner or Options		Date Submitted	Submitted by (Signature)		P.							
<b>Quinterra Resources Inc.</b>					P.		Property Name <b>Sylvanite Creek</b>					
Footage From To		Rock Type	Description Colour, grain size, texture, minerals, alteration, etc.			Pillar Feature Angle °	Core Specimen Footage †	Your Sample No.	Sample Footage From To	Sample Length	Au ppb	Assays ‡
252'	295'8"	carbed tuff	- gray to green-gray carbonatized mafic tuff; fine-gr. massive; qtz-carb. veins here and there; few vein zones with cubic pyrite									
			271' -274' -slightly bleached, pyritic tuff with ½ to 1" qtz-carb veins with pyrite					60565	271' 274'	3'	43	
			275' -276' -same as above					60566	275' 276'	1'	23	
			276' -278' -barren bleached tuff									
			278' -279'6" -1½" vein with pyritic walls (1%)					60567	278' 279'6"	1'6"	16	
			279'6"-285'8" -gray, bleached tuff with some barren qtz. carb. veins up to 3" wide									
			285'8"-287'6" -contorted chloritic pyritic (5%) tuff with smokey qtz. vein material (30%)					60568	285'8" 287'6"	1'10"	234	
			287'6"-291' -gray carb. tuff; massive									
			291' -294'6" -contorted chloritic pyritic (5%) tuff with smokey qtz veins (30%)					60569	291' 294'6"	3'6"	15	
			294'6"-295'8" -gray carb. tuff									
295'8"	300'	"syenite"	- reddish, bleached, silicified rock; may be syenitized; not a true intrusive; cut by qtz.-carb. veinlets ( ½") at 80° to C.A. some diss. py in veins and walls ( 1%)					60570	295'8" 300'	4'4"	23	
300'		end of hole										

703-002/11

\* For features such as foliation, bedding, schistosity, measured from the long axis of the core.

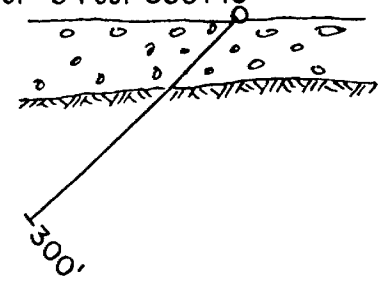
‡ Additional credit available. See Assessment Work Regulations.





D.D.H. SC-10  
-45°, S18°W

100' N, 110' E of #3 Post 630745



SECTION

1" = 200'

*Ray Leashbrook*  
*Jan 17/85*

Mining Company <b>Norex Drilling Ltd.</b>		Collar Elevation	Bearing of hole from true North 190 azm	Total Footage 375 ft.	Dip of Hole at Collar 45	Location of hole in relation to a fixed point on the claim.  1250E 620N 170'N and 100'E of Post No.3 Claim P630745	Map Reference No.	Claim No. P630745	
Date Hole Started Sept. 20, 1983	Date Completed Sept. 22, 1983	Date Logged Sept. 21/83	Logged by W. D. Karvinen				Location (Twp, Rgt, Con or Lat and Long)		
Exploration Co., Owner or Operator  Quinterra Resources Inc.		Date Submitted	Submitted by (Signature)				Tooms Township		
							Property Name Sylvanite Creek		

Footage		Rock Type	Description <small>(Color, grain size, texture, minerals, alteration, etc.)</small>	Placer Feature Angle*	Core Specimen Footage †	Your Sample No.	Sample Footage		Sample Length	Assays ‡	
From	To						From	To		Au	ppb
0	73'	overburden									
73'	78'	gray carb tuff	73' - 75' -carb. mafic tuff, layering at 70° to C.A.								
			75' - 78' -siliceous qtz-carbonate with qtz-ankerite veinlets at 45° to C.A., diss. py 1%; -contact with tuff at 45°, -cuts across layering in tuff			60571	75'	78'	3'	44	
78'	81'	lamprophyre	- med-grained hornblende lamprophyre; gradational contact; tr. sulfides								
81'	182'	carb. tuff cut by tones of veins	- gray-green, med gr. massive; light-gray to gray - occasional veinlets with pyritic walls								
			88' - 93' -gray, siliceous bleached carb tuff, diss. py ~4%; few qtz veins (1/2")			60572	88'	93'	5'	23	
			93' - 113' -gray to green-gray carb tuff; diss. py here and there								
			113' - 118' -cubic pyrite (1%) in chloritic and veined tuff with bleached walls; veins 1/2" to 1 1/2"; 30% veins; layering at 65° to C.A.			60573	113'	118'	5'	319	500
			118' - 151' -gray carb. tuff with 10% barren qtz-carb veinlets; diss. pyrite (<1%) in places								
			151' - 154' -gray-green carb. tuff with 1/2" veinlets at all angles and bleached pyritic walls			60574	151'	154'	3'	107	

3 (02/11)

\* For features such as foliation, bedding, schistosity, measured from the long axis of the core.

† Additional credit available. See Assessment Work Regulations.

*Ray Listerwood*  
Jan. 17/85

Log

Drilling Company		Collar Elevation	Bearing of hole from true North	Total Footage	Dip of Hole at Collar	Location of hole in relation to a fixed point on the claim.		Map Reference No.	Claim No.		
Norex Drilling Ltd.				375 ft.					P630475		
Date Hole Started	Date Completed	Date Logged	Logged by			Location (Twp., Lot, Con. or Lat. and Long.)					
		Sept. 21/83	W. O. Karvinen		Fl	Tooms Township					
Exploration Co., Owner or Optionee		Date Submitted	Submitted by (Signature)		Fl	Property Name					
Quinterra Resources Inc.					Fl	Sylvanite Creek					
Footage		Rock Type	Description Colour, grain size, texture, minerals, alteration, etc.	Placer Feature Angle*	Core Specimen Footage †	Your Sample No.	Sample Footage		Sample Length	Assays ‡	
From	To						From	To		Au	
			154' -157' -same but ~35% qtz. vein material; 1% py			60575	154'	157'	3'	ppb 289	
			157' -163' -gray-green carb. tuff, some barren vein material								
			163' -165'4" -qtz. vein with pyrite from 163'2" to 165'4"; good pyritic-chloritic walls (5% py)			60576	163'	165'4"	2'4"	88	
			165'4"-167' -carb. mafic tuff, some bleaching								
			167' -168'8" -dark chloritic tuff with 30% qtz vein material with 5-10% py in walls			60577	167'	168'8"	1'8"	126	
			168'8"-169' -massive carb. tuff								
			169' -171' -30% qtz veins in bleached tuff with 2% py veins 1/2" to 2"			60578	169'	171'	2'	336	6.01
			171' -182' -massive gray carb tuff								
182		sulfidic siliceous chalcite and minor tuff	- gray, layered, qtz-carbonate interlayered with tuff with 10% coarse cubic and massive pyrite								
			182' -183'6" -carb mafic tuff interlayered with 1/2" chert beds; diss. py 40% qtz; 2% py			60579	182'	183'6"	1'6"	48	
			183'6"-185'4" -black, chloritic pyritic tuff with interlayered smokey qtz; 10% py; layering at 65° to C.A.			60580	183'6"	185'4"	1'10"	52	
			185'4"-188' -thinly layered tuff and carb (1-2 mm) at 60° to C.A. with layers of massive and diss. py (~5%); bleached; sericitic; no veins			60581	185'4"	188'	2'8"	51	

183 (82/1)

\* For features such as foliation, bedding, schistosity, measured from the long axis of the core.

† Additional credit available. See Assessment Work Regulations.

Log

Drilling Company <b>Norex Drilling Ltd.</b>		Collar Elevation	Bearing of hole from true North	Total Footage <b>375 ft.</b>	Dip of Hole at Collar	Location of hole in relation to a fixed point on the claim.	Map Reference No.	Claim No.	
Date Work Started	Date Completed	Date Logged	Logged by <b>W. O. Karvinen</b>		ft.		Location (Twp., Lot, Con. or Lat. and Long.) <b>Tooms Township</b>		
Exploration Co., Owner or Options <b>Quinterra Resources Inc.</b>		Date Submitted	Submitted by (Signature)		ft.		Property Name <b>Sylvanite Creek</b>		
					ft.				

Footage		Rock Type	Description <small>Colour, grain size, texture, minerals, alteration, etc.</small>	Placer Feature Angle*	Core Specimen Footage †	Your Sample No.	Sample Footage		Sample Length	Assays ‡	
From	To						From	To		Au	
			188' -190' -same but with a zone of coarse cubic pyrite (8%) from 188' to 188'8"; some smokey chert layers			60582	188'	190'	2'	ppb	265
			190' -192' -same, some massive pyrite lenses (2 mm)			60583	190'	192'	2'		59
			192' -195' -interlayered carbonate-tuff and chert with coarse cubic and massive pyrite (10%); drusy qtz. vein (2") at 194'			60584	192'	195'	3'		175
			195' -197' -carb/tuff interlayered with chert; some coarse cubic py			60585	195'	197'	2'		101
			197' -200' -very fine-grained layered carb and tuff with diss. pyrite and a few cubes (2%); no veins			60586	197'	200'	3'		129
			200' -203' -very contorted pyritic carbonate and tuff with some qtz; massive and cubic pyrite (20%); layering nearly parallel to C.A.			60587	200'	203'	3'		491
			203' -206' -well-layered (½ to 1½") carbonate and tuff at 45° to C.A.; diss. py and cubes (3%); no veins			60588	203'	206'	3'		49
			206' -209' -very contorted, black pyritic carb-chert-tuff; layering nearly parallel to C.A., coarse cubic and massive pyrite; 25% py smokey chert layers up to ½" parallel to C.A. but contorted			60589	206'	209'	3'		175
			209' -211' -same			60590	209'	211'	2'		114
			211' -215' -fine carbonate and chert, partly contorted; diss. py ½ to 2%, no veins			60591	211'	215'	4'		311

\* For features such as foliation, bedding, schistosity, measured from the long axis of the core.

† Additional credit available. See Assessment Work Regulations.

Footage		Rock Type	Description Colour, grain size, texture, minerals, alteration, etc.	Planar Feature Angle *	Core Specimen Footage †	Your Sample No.	Sample Footage		Sample Length	Assays ‡	
From	To						From	To		Au	
			215' -216'	-black, contorted, pyritic carb-chert-tuff; 20% py; layering nearly parallel to C.A.		60592	215'	216'	1'	ppb 33	
			216' -221'	-gray, massive, carb. tuff							
			221' -226'	-light-gray, siliceous exhalite; some veinlets; diss. py ~4%;		60593	221'	226'	5'	70	
			226' -231'	-siliceous qtz.-carbonate zone; light gray with 1/2" to 2" qtz. veins; black tourmaline in veins; coarse to diss. py ~3%		60594	226'	231'	5'	81	
			231' -235'	-thinly-bedded, dark gray to black carb-chert-tuff with coarse cubic to massive pyrite (~15%); layering at 45° to C.A.; silicified zone above has lower contact cutting across bedding and at 80° to C.A.		60593	231'	235'	4'	411	0.012
			235' -240'	-black to dark-gray, thinly-bedded carb-tuff with massive pyrite beds up to 3 mm thick; some cubic pyrite, 8% py; bedding at 45° to C.A.; some light-gray, fine sericitic tuff beds		60596	235'	240'	5'	52	
240'		gray carb. tuff with siliceous zones		-gray, med. gr. tuff, massive to layered; foliation at 90° to C.A.							
			240' -253'	-gray, massive carb. mafic tuff, 10% barren qtz. veins							
			253' -258'	-massive, light-gray, siliceous zone with diss. py (~5%) cut by 1/2" to 1" qtz-ankerite veins at 45° to C.A.		60597	253'	258'	5'	19	
			258' -261'	-same; gradational contacts		60598	258'	261'	3'	19	

783 (8/71)

\* For features such as foliation, bedding, schistosity, measured from the long axis of the core.

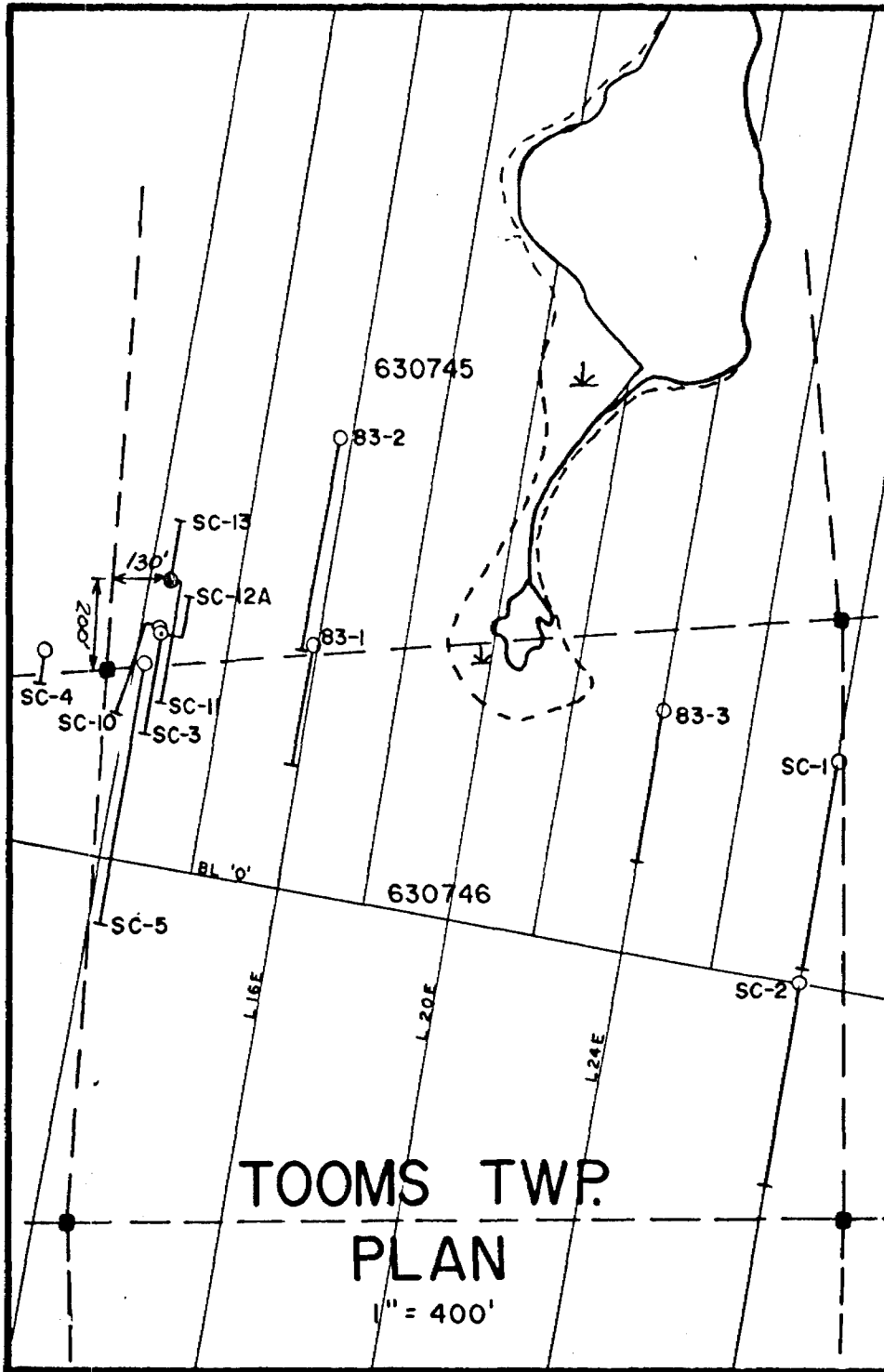
† Additional credit available. See Assessment Work Regulations.

Drilling Company <b>Norex Drilling Ltd.</b>		Collar Elevation	Bearing of hole from true North	Total Footage <b>375 ft.</b>	Dip of Hole at Collar	Location of hole in relation to a fixed point on the claim.	Map Reference No.	Claim No.
Date Started	Date Completed	Date Logged <b>Sept. 22/83</b>	Logged by <b>W. O. Karvinen</b>		Fl		Location (Twp., Lot, Con. or Lat. and Long.)  <b>Tooms Township</b>	Property Name <b>Sylvanite Creek</b>
Location Co., Owner or Optionee  <b>Quinterra Resources Inc.</b>		Date Submitted	Submitted by (Signature)		Fl			
					Fl			

Footage From	Footage To	Rock Type	Description Colour, grain size, texture, minerals, alteration, etc.	Placer Feature Angle *	Core Specimen Footage †	Your Sample No.	Sample Footage		Sample Length	Assays ‡	
							From	To		Au	
			261' -280' -mottled, med-gr. green-black to green-gray carb tuff; spotted with anhedral grains of amphibole; few barren veinlets							ppb	
			280' -287' -pyritic siliceous zone with 1/2" to 1" qtz veins 2% py; veins at 45° and 60° to C.A.			60599	285'	287'	2'	40	
			287' -290' -reddish, bleached siliceous zone; little py								
			290' -292' -chloritic tuff with one bleached pyritic zone, 4" wide								
			292' -295' -gray, siliceous zone; 4" qtz vein at 294'6" at 45° to C.A.; very pyritic walls; 2% py average			60600	292'	295'	3'	602	0.01g
			295' -312' -gray to green-black carb tuff, some bleached zones; foliated to massive								
			312' -316'6" -siliceous, gray to reddish-gray zone with 1/2" to 1 1/2" qtz-albite-py veins at 35° to 55° to C.A.; 3% diss. py			60404	312'	316'6"	4'6"	74	
			316'6"-328' -slightly carbonatized mafic tuff; few veinlets with pyritic walls								
			328' -333' -reddish, bleached tuff; few barren veinlets; little pyrite								
			333' -335'6" -carb. mafic tuff								
			335'6"-340' -reddish gray, siliceous zone with qtz-albite veins at 70° to C.A. diss. py 1%			60405	335'6"	340'	4'6"	58	

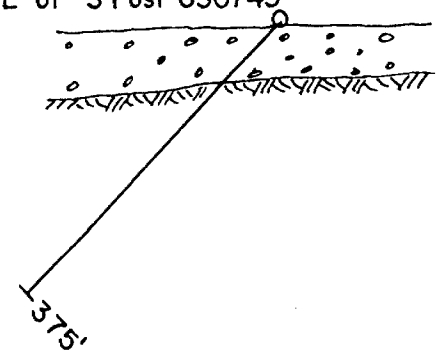
§ 103(1) \* For features such as foliation, bedding, schistosity, measured from the long axis of the core. † Additional credit available. See Assessment Work Regulations.





D.D.H. SC-11  
-45°, S10° W

200' N, 130' E of #3 Post 630745



SECTION

1" = 200'

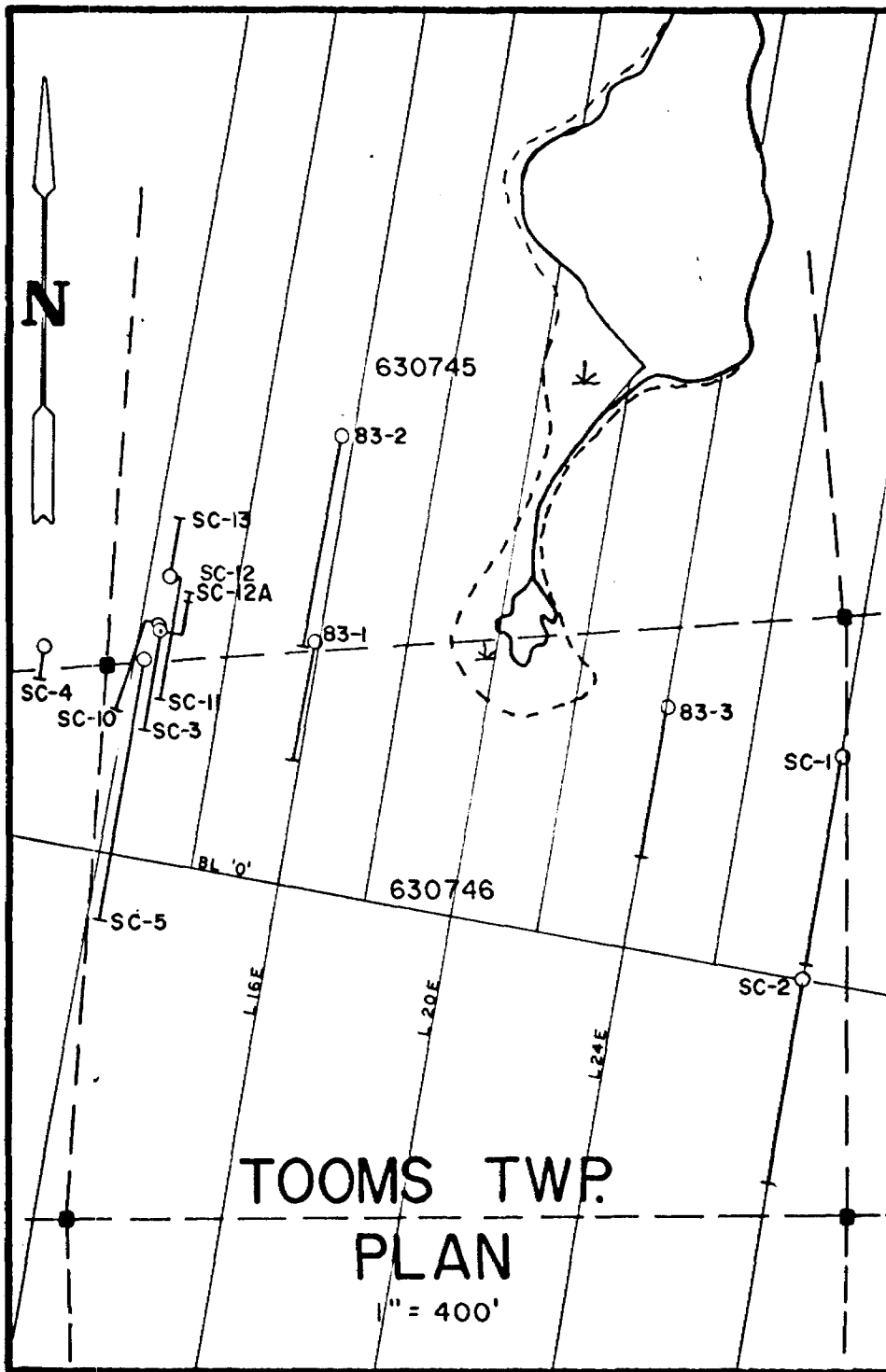
*Ray Lashbrook*  
*Jan 17/85*



Drilling Company Norex Drilling Ltd.		Collar Elevation	Bearing of hole from True North N10° E	Total Footage 106 ft.	Dip of Hole at Collar 60°	Location of hole in relation to a fixed point on the claim.  500N 1250E 100'N and 100'E of Post No. 3, claim P630745	Map Reference No.	Claim No. P630745
Hole Started Sept. 23/83	Date Completed Sept. 23/83	Date Logged Sept. 26/83	Logged by W. D. Karvinen		ft.		Location (Twp., Lot, Con. or Lat. and Long.)  Tooms Township	Property Name Sylvanite Creek
Location Co., Owner or Optionee  Quinterra Resources Inc.		Date Submitted	Submitted by (Signature)		ft.			
					ft.			

Footage From	To	Rock Type	Description Colour, grain size, texture, minerals, alteration, etc.	Placer Feature Angle *	Core Specimen Footage †	Your Sample No.	Sample Footage		Sample Length	Assays †	
							From	To		Au	ppb
0	56'	overburden									
56'	96'	carb mafic tuff	- gray-green, foliated to massive carb. tuff with gray silicified zones with pyrite								
96'	100'	pyritic chert-carb.-tuff	- thinly bedded sericitic, chert, carbonate and pyrite; 1/8" to 1" beds at 45° to C.A.			60419	96'	100'	4'	19	
100'	106'	lamprophyre	- gray hornblende lamprophyre; few narrow qtz. veins at 70° to C.A.								
106'		sand seam	- stuck rods; hole abandoned								

Ray Lasbrook  
Jan 17/85

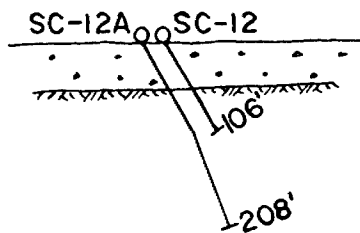


D.D.H's. SC-12 & SC-12A

-60°, N 10°E

SC-12 100'N., 100'E. of Post #3 630745

SC 12A 75'N., 100'E. of Post #3 630745



SECTION

1" = 200'

*Ray Paulbrook  
Jan 17/85*

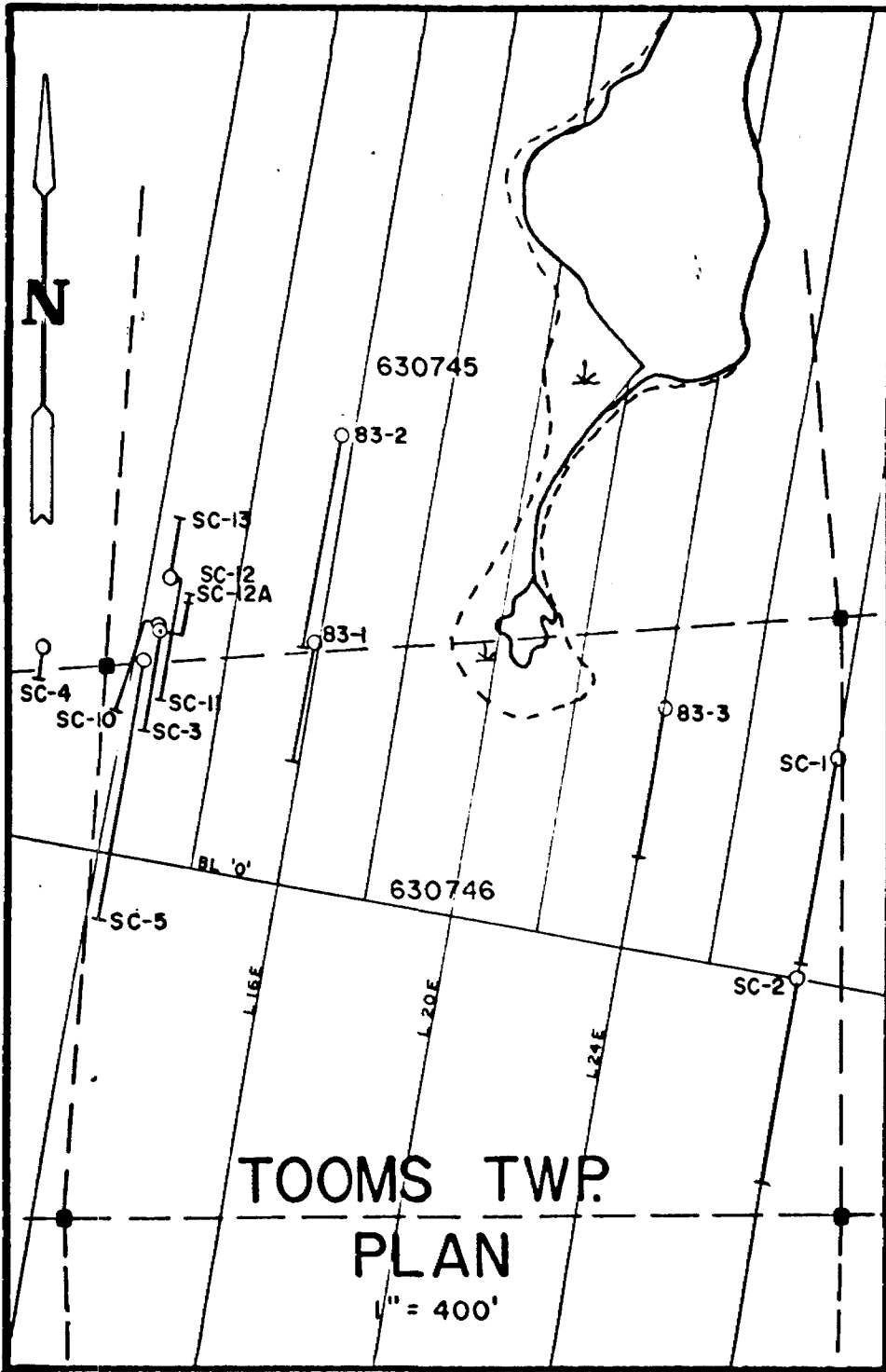
Drilling Company <b>Nored Drilling Ltd.</b>		Collar Elevation	Bearing of hole from N 10° E	Total Footage 208	Dip of Hole at Collar 60	Location of hole in relation to a fixed point on the claim.  SOON 1250E 100'N and 100'E of Post No.3, claim P630745	Map Reference No.	Claim No. P630745	
Date Hole Started Sept. 23/83	Date Completed Sept. 24/83	Date Logged Sept. 26/83	Logged by W. O. Karvinen		208 ft 69		Location (Twp., Lot, Con. or Lat. and Long.)  Tooms Township	Property Name Sylvanite Creek	
Exploration Co., Owner or Optionee  Quinterra Resources Inc.		Date Submitted	Submitted by (Signature)						

Footage		Rock Type	Description Colour, grain size, texture, minerals, alteration, etc.	Planar Foliation Angle*	Core Specimen Footage †	Your Sample No.	Sample Footage		Sample Length	Assays ‡	
From	To						From	To		Au	
0'	56'	overburden								ppb	
56'	75'6"	lamprophyre	- reddish to gray, amphibole lamprophyre; - some wall rocks or hybrid rocks included; - foliated at 45° to C.A.								
75'6"	86'	siliceous zone	- gray, massive qtz-carbonate with 1/4" to 3/4" qtz veins at low angles to C.A.; fractured; some graphite in fractures, diss. py	12							
	75'6" - 81'		- same as above			60408	75'6"	81'	4'6"	30	
	81' - 86'		- same			60409	81'	86'	5'	32	
86'	104'	carb. mafic tuff	- well-layered to massive, med-gr. carbonatized mafic tuff; gray-green; few veinlets								
	86' - 96'		- gray-green, foliated tuff (45° to C.A.)								
	96' - 100'		- thinly-bedded, sericitic, cream-colored tuff- chert-pyrite; 1" to 1 1/2" beds; 5% pyrite in thin beds; bedding at 45° to C.A.			60410	96'	100'	4'	95	
104'	123'	lamprophyre	- gray, hornblende lamprophyre; massive to slightly foliated - to 19'								
	119' - 123'		- gray, carbonatized hybrid wall rock to lamprophyre								
123'	159'	siliceous pyritic zone	- gray, massive, siliceous with pyritic tuff-chert sections; 5-10% py								
	123' - 128'		- pyrite-chert-carbonate-tuff; thinly bedded (1 mm-4 mm) at 40° to C.A.; 15% py, some cpy			60411	123'	128'	5'	308	

Ray Lashbrook  
Jan 17/85

Drilling Company Norex Drilling Ltd.		Collar Elevation	Bearing of hole from true North N10°E	Total Footage 208 ft.	Dip of Hole at Collar 60	Location of hole in relation to a fixed point on the claim.	Map Reference No.	Claim No. P630745	
Date Hole Started Sept. 23/83	Date Completed Sept. 24/83	Date Logged Sept. 26/83	Logged by W. O. Karvinen		208 ft   69		Location (Twp., Lot, Con. or Lat. and Long)		
Exploration Co., Owner or Options Quinterra Resources Ltd.		Date Submitted	Submitted by (Signature)		ft		Tooms Township		
					ft		Property Name Sylvanite Creek		

Footage		Rock Type	Description Colour, grain size, texture, minerals, alteration, etc.	Pener Features Angle*	Core Specimen Footage †	Your Sample No.	Sample Footage		Sample Length	Assays ‡	
From	To						From	To		Au	
			128' -133' -light-gray to white, massive, siliceous zone faint layering at 45° to C.A.; qtz-albite veinlets nearly parallel to C.A.; diss. py 1%			60412	128'	133'	5'	45	
			133' -138' -same, but well-fractured with qtz-albite veinlets; graphite seams; diss. pyrite 1%			60413	133'	138'	5'	43	
			138' -141' -same			60414	138'	141'	3'	36	
			141' -144' -same, but pyrite cubic; 3%			60415	141'	144'	3'	44	
			144' -146' -gray, hybrid zone; little pyrite ½%								
			146' -148' -same with qtz veins up to 2" thick with abundant pyrite (10%)			60416	146p	148'	2'	95	
			148' -151' -gray-green, carb. mafic tuff								
			151' -154' -massive, gray siliceous zone; qtz-ankerite veins at low angles to C.A.			60417	151'	154'	3'	23	
			154' -159' -same, cubic pyrite in wall rocks			60418	154'	158'	4'	132	
159'	208'	carb. mafic tuff	-gray-green to green-black, foliated, med.-grained tuff; few veinlets								
			203' -sand seam								
208'		end of hole									

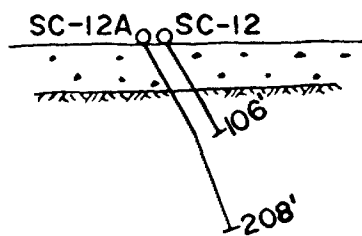


DD.H's. SC-12 & SC-12A

-60°, N 10°E

SC-12 100'N., 100'E. of Post #3 630745

SC 12A 75'N., 100'E. of Post #3 630745



SECTION

*Ray Lashbrook*  
*Jan 17/85*

1" = 200'



Natural Resource

Drilling Log

Fill in on every page

No. SC-13 Page No. 1  
Claim No. P630745

Drilling Company Norex Drilling Ltd.		Collar Elevation	Bearing of hole from true North N10°E	Total Footage 320 ft.	Dip of Hole at Collar 60°	Location of hole in relation to a fixed point on the claim.  1250E 620N 170°N and 100°E of Post No. 3, claim P630745	Map Reference No.	Claim No. P630745	
Date Hole Started Sept. 25/83	Date Completed Sept.	Date Logged Sept 26/83	Logged by W. O. Karvinen		320 ft. 68°		Location (Twp., Lot, Con. or Lat. and Long.)  Toons Township		
Exploration Co., Owner or Optionee  Quinterra Resources Inc.		Date Submitted Jan 22/85	Submitted by (Signature) <i>Ray Lash</i>		ft.		Property Name Sylvanite Creek		
					ft.				

Footage		Rock Type	Description Colour, grain size, texture, minerals, alteration, etc.	Placer Footage Angle	Core Specimen Footage †	Your Sample No.	Sample Footage		Sample Length	Assays ‡	
From	To						From	To		Au	
0	81'	overburden								ppb	
61'	110'	carbonized mafic tuff	- gray-green to green-black, foliated (40° to C.A.) to massive; barren qtz-carb. veinlets at various angles								
110'	119'	siliceous zone	- light-gray, massive siliceous rocks; few qtz veins at small angles to C.A.; some pyrite up to 1%								
119'	146'6"	carb. mafic tuff	- gray-green, well-foliated, blocky, fractured carbonatized mafic tuff; layering at 40° to C.A.								
146'6"	250'	qtz-carbonate zone	- gray to white, highly fractured, massive, qtz-carbonate rock with numerous veinlets and veins; cubic pyrite zone on upper contact; diss. cubic pyrite								
			146'6"-150' -chert-carbonate-tuff with cubic and massive pyrite (15%); smokey qtz; layering at 35° to C.A.; very sericitic in places			60420	146'6"	150'	3'6"	66	
			150' - 154' -gray to white qtz-carbonate rock; very siliceous, massive, with numerous fracture filled qtz-carb veins, cubic diss. py; spots of black mineral either graphite or MoS2			60421	150'	154'	4'	27	
			154' - 159' -same			60422	154'	159'	5'	75	
			159' - 164' -same			60423	159'	164'	5'	36	
			164' - 169' -same			60424	164'	169'	5'	15	
			169' - 173' -same			60425	169'	173'	4'	44	

783 (82/7)

\* For features such as foliation, bedding, schistosity, measured from the long axis of the core.

† Additional credit available. See Assessment Work Regulation

Drilling Company <b>Nbrex Drilling Ltd.</b>		Collar Elevation	Bearing of hole from true North <b>N10°E</b>	Total Footage <b>320 ft.</b>	Dip of Hole at Collar <b>60</b>	Location of hole in relation to a fixed point on the claim.  <b>1250E 620N 170°N and 100°E of Post No.3, claim P630745</b>	Map Reference No.	Claim No. <b>P630745</b>
Date Hole Started <b>Sept. 25/83</b>	Date Completed	Date Logged <b>Sept. 26/83</b>	Logged by <b>W. O. Karvinen</b>				Location (Twp., Lot, Con. or Lat. and Long.)  <b>Tooms Township</b>	
Exploration Co., Owner or Optionee  <b>Quinterra Resources Inc.</b>		Date Submitted	Submitted by (Signature)			Property Name <b>Sylvanite Creek</b>		

Footage		Rock Type	Description <small>Colour, grain size, texture, minerals, alteration, etc.</small>	Placer Feature Angle*	Core Specimen Footage †	Your Sample No.	Sample Footage		Sample Length	Assays ‡	
From	To						From	To		Au	
			<b>173' - 177'</b> -same but very coarse ankerite and qtz from 174'-177'; diss. graphite?			<b>60426</b>	<b>173'</b>	<b>177'</b>	<b>4'</b>	<b>55</b>	
			<b>177' - 180'</b> -same but very beddy fractured and blocky, 1% pyrite; diss. graphite; cubic py			<b>60427</b>	<b>177'</b>	<b>180'</b>	<b>3'</b>	<b>62</b>	
			<b>180' - 185'</b> -same			<b>60428</b>	<b>180'</b>	<b>185'</b>	<b>5'</b>	<b>106</b>	
			<b>185' - 189'</b> -same			<b>60429</b>	<b>185'</b>	<b>189'</b>	<b>4'</b>	<b>104</b>	
			<b>189' - 193'</b> -same			<b>60430</b>	<b>189'</b>	<b>193'</b>	<b>4'</b>	<b>18</b>	
			<b>193' - 196'</b> -same			<b>60431</b>	<b>193'</b>	<b>196'</b>	<b>3'</b>	<b>19</b>	
			<b>196' - 200'</b> -same			<b>60432</b>	<b>196'</b>	<b>200'</b>	<b>4'</b>	<b>18</b>	
			<b>200' - 205'</b> -same			<b>60433</b>	<b>200'</b>	<b>205'</b>	<b>5'</b>	<b>11</b>	
			<b>206' - 211'</b> -same			<b>60439</b>	<b>206'</b>	<b>211'</b>	<b>5'</b>	<b>18</b>	
			<b>211' - 214'</b> -same			<b>60440</b>	<b>211'</b>	<b>214'</b>	<b>3'</b>	<b>15</b>	
			<b>214' - 218'</b> -same; less fractured; more qtz-rich zones with diss. cubic py and graphite			<b>60441</b>	<b>214'</b>	<b>218'</b>	<b>4'</b>	<b>34</b>	
			<b>218' - 223'</b> -same; some zones orange colored			<b>60442</b>	<b>218'</b>	<b>223'</b>	<b>5'</b>	<b>84</b>	
			<b>223' - 226'</b> -gray, massive, siliceous rock; diss. py 1% no veins			<b>60443</b>	<b>223'</b>	<b>226'</b>	<b>3'</b>	<b>22</b>	
			<b>226' - 230'</b> -well foliated, silicified gray ruff; diss. py 1% foliation @ 30° to C.A.			<b>60444</b>	<b>226'</b>	<b>230'</b>	<b>4'</b>	<b>74</b>	



Drilling Company <b>Norex Drilling Ltd.</b>	Collar Elevation	Heading of hole from true N <b>N10° E</b>	Total Footage <b>320 ft.</b>	Dip of Hole at Collar <b>60</b>	Location of hole in relation to a fixed point on the claim.	Map Reference No.	Claim No.
Date Hole Started	Date Completed	Date Logged <b>Oct. 4/83</b>	Logged by <b>W. O. Karvinen</b>	<b>320 ft. 68</b>		Location (Twp., Lot, Con. or Lat. and Long.)	
Exploration Co., Owner or Optionee <b>Quinterra Resources Ltd.</b>		Date Submitted	Submitted by (Signature)	<b>ft.</b>		Tooms Township	
				<b>ft.</b>		Property Name <b>Sylvanite Creek</b>	

Footage		Rock Type	Description <small>Colour, grain size, texture, minerals, alteration, etc.</small>	Placer Feature Angle*	Core Specimen Footage †	Your Sample No.	Sample Footage		Sample Length	Au ppb	Assays ‡
From	To						From	To			
			230' - 235' - gray, siliceous rock with qtz-rich zones containing lenses of massive pyrite (2 mm) and cubic py (1%); also diss. graphite			60445	230'	235'	5'	33	
			235' - 240' - massive, gray siliceous rock; diss py 1%			60446	235'	240'	5'	55	
			240' - 245' - same; more foliated however at 243' to 245' with chlorite and diss. py (1%)			60447	240'	245'	5'	67	
			245' - 250' - same; gradational contact; some qtz-carb veins at 30° to C.A. and 60° to foliation			60448	245'	250'	5'	85	
250'	265'	carb. mafic tuff	- gray, to green, carb. mafic tuff; barren veinlets - gradational contacts; no sulfides								
265'	316'	siliceous zone	- gray, massive, foliated with pyrite-rich sections up to 15% diss. sulfides								
			265' - 271' - gray, massive, siliceous rock; select layering; barren								
			271' - 275'6" - gray, massive, siliceous rock; faint layering at 30° to C.A.; 1% diss. py			60449	271'	275'6"	4'6"	51	
			275'6" - 281' - same but with 10-15% diss. pyrite			60450	275'6"	281'	5'6"	160	
			281' - 286' - well foliated, silicified tuff with 5% pyrite; some qtz veins 1/2"-2" thick at 40° to C.A.			38285	281'	286'	5'	59	
			286' - 291' - same, no veins, 2% py			38286	286'	291'	5'	52	

783 (02/7)

\* For features such as foliation, bedding, schistosity, measured from the long axis of the core.

‡ Additional credit available. See Assessment Work Regulations.





Natural Resources  
Ontario

Drilling Log

File in on every page No. SC-13 Page No. 4

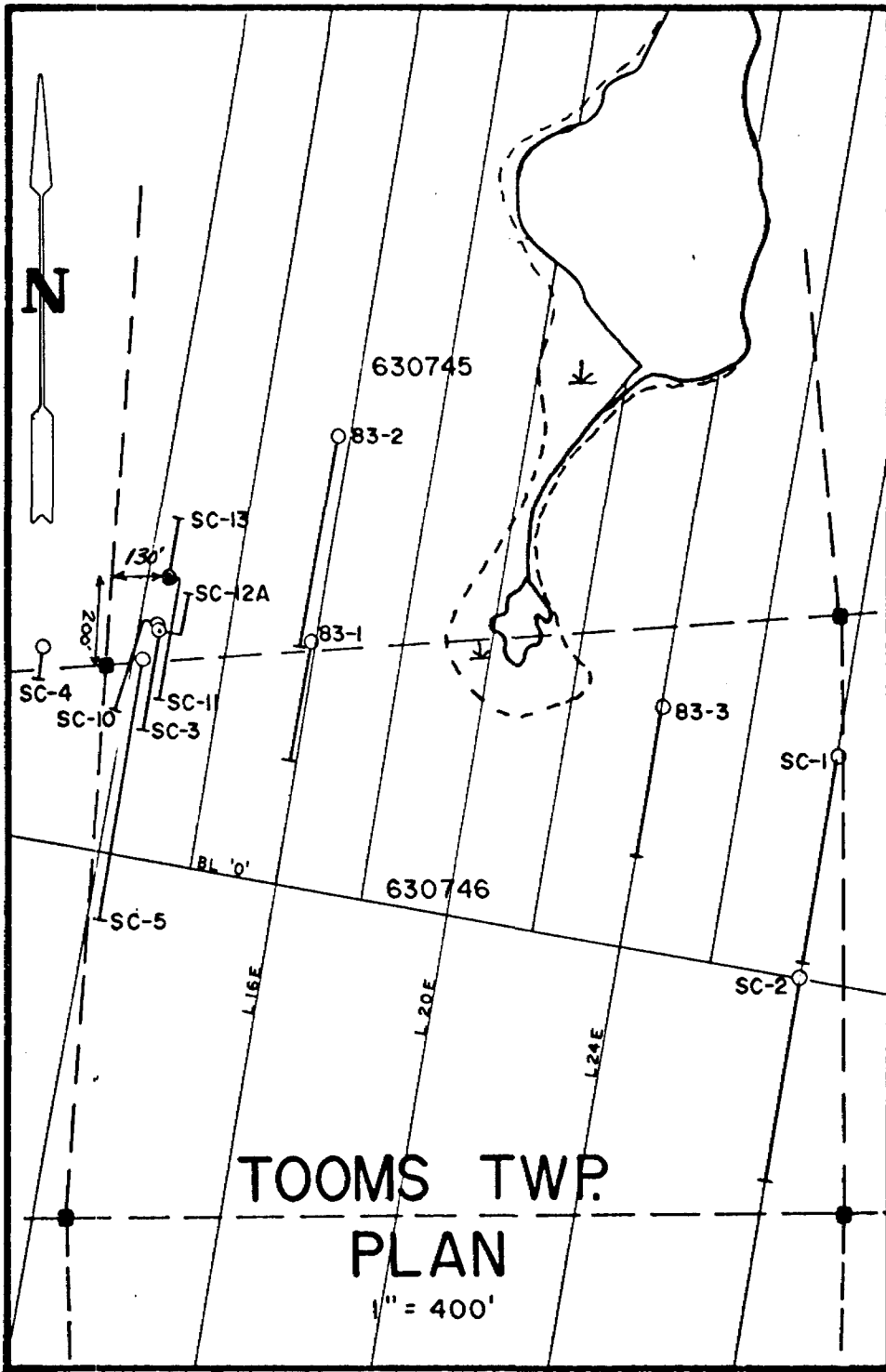
Drilling Company <b>Norex Drilling Ltd.</b>		Collar Elevation	Bearing of hole from true North <b>N10° E</b>	Total Footage <b>320 ft.</b>	Dip of Hole at Collar <b>60</b>	Location of hole in relation to a fixed point on the claim.	Map Reference No.	Claim No.	
Date Hole Started	Date Completed	Date Logged <b>Oct. 4/83</b>	Logged by <b>W. O. Karvinen</b>	<b>320 ft.</b>	<b>68</b>		Location (Twp., Lot, Con. or Lat. and Long.)		
Exploration Co., Owner or Optionee <b>Quinterra Resources Inc.</b>		Date Submitted	Submitted by (Signature)				Tooms Township		
							Property Name <b>Sylvanite Creek</b>		

Footage		Rock Type	Description Colour, grain size, texture, minerals, alteration, etc.	Placer Feature Angle †	Core Specimen Footage †	Your Sample No.	Sample Footage		Sample Length	Assays †	
From	To						From	To		Au	
			291' - 295' -massive, gray siliceous rock with 2% diss. py; some veins up to 1 1/2" at 45° to C.A.			38287	291'	295'	4'	ppb 29	
			295' - 298' -same								
			298' - 299'4" -well foliated carb-tuff; foliation at 10-20° to C.A.			38288	298'	299'4"	4'4"	38	
			299'4" - 300'4" -solid qtz vein 8" wide with pyritic walls (5%) of carb tuff			38289	299'4"	300'4"	1'	34	
			300'4" - 306' -massive gray siliceous rock with foliated sections; 2% diss. py qtz vein at 304' at 20° to C.A.			38290	300'4"	306'	5'8"	23	
			306' - 309'6" -massive, gray siliceous rock; 2% diss. py			38291	306'	309'6"	3'6"	10	
			309'6" - 316' -same but with some sections of coarse carbonate and qtz with sulfides, 1-2% diss. py; lower contact at 20° to C.A.			38292	309'6"	316'	6'6"	14	
316'	320'	chloritic tuff	- dark green, broken, chlorite-rich tuff; no sulfides or veins								
320'		end of hole									

783 (82/1)

\* For features such as foliation, bedding, schistosity, measured from the long axis of the core.

† Additional credit available. See Assessment Work Regulations.



DDH. SC-13  
-60°, N10° E

200' N, 130' E of #3 Post 630745



SECTION

1" = 200'

*Ray Lashbrook*  
Jan 17/85



Drilling Company <b>Norex Drilling Ltd.</b>		Collar Elevation	Bearing of hole from true North <b>S60 W</b>	Total Footage <b>700 ft.</b>	Dip of Hole at collar <b>45</b>	Location of hole in relation to a fixed point on the claim.  <b>700 N 4170E 250'S and 400'E of No.4 Post of claim P630750</b>	Map Reference No.	Claim No. <b>P630750</b>
Date Hole Started <b>Oct. 4, 1983</b>	Date Completed <b>Oct. 7, 1983</b>	Date Logged <b>Oct. 7/83</b>	Logged by <b>W. O. Karvinen</b>	<b>250 ft. 55</b>	Location (Twp., Lot, Con. or Lat. and Long)  <b>Tooms Township</b>			
Exploration Co., Owner or Options <b>Quinterra Resources Ltd.</b>		Date Submitted <b>Jan 22/85</b>	Submitted by (Signature) <i>Ray Lashbrook</i>	<b>700 ft. 54</b>				
				<b>ft.</b>			Property Name <b>Sylvanite Creek</b>	

Footage		Rock Type	Description <small>Colour, grain size, texture, minerals, alteration, etc.</small>	Panner Footage Angle *	Core Section Footage †	Your Sample No.	Sample From	Footage To	Sample Length	Assays ‡	
From	To									Av	
0	28'	overburden								ppb	
28'	90'	carbonatized ultramafic tuff	- well layered at 50-60° to C.A.; med-gr.; numerous veins and veinlets of qtz-ankerite with sulfides; sections rich in fuchsite								
	28' - 35'		-gray-green, carbonatized tuff; few 1" qtz veins with some diss. py and tourmaline								
	35' - 36'		-zone of qtz veinlets in carb. tuff diss. py in veins and walls			38293	35'	36'	1'	193	
	36' - 38'		-carbonatized mafic tuff								
	38' - 43'		-qtz-carb. veins up to 3" in bleached, silicified rock; diss. cubic pyrite 1-2% tr. cpy			38294	38'	43'	5'	59	
	43' - 47'2"		-fuchsitic gray carb tuff; few barren veinlets								
	47'2" - 48'		-qtz-ankerite vein nearly parallel to C.A. with diss. py in walls			38295	47'2"	48'	10"	19	
	48' - 58'		-gray, med.-gr. carb. mafic tuff								
	58' - 63'		-fuchsitic carb. tuff with numerous veinlets and qtz veins 1"-2" thick at 80° to C.A. -layering and veinlets folded			38296	58'	63'	5'	55	
	63' - 68'		-fuchsitic carb. tuff; few veinlets with diss. py; ~1% py throughout			38297	63'	68'	5'	41	
	68' - 73'		-same			39298	68'	73'	5'	33	

Drilling Company <b>Norex Drilling Ltd.</b>		Collar Elevation	Bearing of hole from true North S60°W	Total Footage 700 ft.	Dip of Hole at Collar 45	Location of hole in relation to a fixed point on the claim.  700 N 4170E 250'S and 400'E of No.4 Post of claim P630750	Map Reference No.	Claim No. P630750
Date Hole Started Oct. 4, 1983	Date Completed Oct. 7, 1983	Date Logged Oct. 7/83	Logged by W. O. Karvinen		250 N   55		Location (Twp., Lot, Con. or Lat. and Long.)  Tooms Township	Property Name Sylvanite Creek
Exploration Co., Owner or Optionee  Quinterra Resources Ltd.		Date Submitted	Submitted by (Signature)		700 N   54			
					N			

Footage		Rock Type	Description <small>Colour, grain size, texture, minerals, alteration, etc.</small>	Planar Feature Angle*	Core Specimen Footage †	Your Sample No.	Sample Footage		Sample Length	Assays ‡	
From	To						From	To		Au	
			73' - 78' -same			38299	73'	78'	5'	27	
			78' - 83' -same; 8" silicified zone with diss. py at 81'			38300	78'	83'	5'	34	
			83' - 86' -same			60451	83'	86'	3'	97	
			86' - 90' -gradational contact; gray, carb. tuff; well foliated, no veins								
90'	188'6"	mafic tuff	- massive, green-black, slightly carbonatized, mafic chloritic tuff to 178'								
			178' - 182' -20% qtz-ankerite vein material at various angles and up to 1 1/2" wide with silicified wall rocks; diss. py in veins and walls up to 3%; hematitic in places			60452	178'	182'	4'	47	
			182' - 184' -hematitic greenish tuff								
			184' - 187' -12" qtz vein with diss. pyrite and few 1-2P veins at high angle to C.A.; 35% vein material			60453	184'	187'	3'	152	
			187' - 187'8" -massive, reddish tuff								
			187'8"-188'6" -reddish and dark chloritic pyritic tuff with veinlets; 2% py			60454	175'8"	188'6"	10"	262	
188'6"	240'	carbonatized ultramafic tuff	- gray-green, med.-grained, foliated at 60° to C.A.; veins and veinlets common; fuchsite in places								
			188'6"-192'4" -gray-green carbonatized tuff with barren veinlets								

780 683/11

\* For features such as foliation, bedding, schistosity, measured from the long axis of the core.

† Additional credit available. See Assessment Work Regulations.



Drilling Company <b>Norex Drilling Ltd.</b>		Collar Elevation	Opening of hole from true North <b>S60 W</b>	Total Footage <b>700 ft.</b>	Dip of Hole at Corner   <b>45</b>	Location of hole in relation to a fixed point on the claim.  <b>700 N 4170E 250'S and 400'E of No.4 Post of claim P630750</b>	Map Reference No.	Claim No. <b>P630750</b>
Date Hole Started <b>Oct. 4, 1983</b>	Date Completed <b>Oct. 7, 1983</b>	Date Logged <b>Oct. 7/83</b>	Logged by <b>W. O. Karvinen</b>		<b>250 n   55</b>		Location (Twp., Lot, Con. or Lat. and Long)  <b>Tooms Township</b>	Property Name <b>Sylvanite Creek</b>
Exploration Co., Owner or Optionee  <b>Quinterra Resources Ltd.</b>		Date Submitted	Submitted by (Signature)		<b>700 n   54</b>			
					<b>n  </b>			

Footage		Rock Type	Description <small>Colour, grain size, texture, minerals, alteration, etc.</small>	Placer Footage Angle*	Core Section Footage †	Your Sample No.	Sample Footage		Sample Length	Assays ‡	
From	To						From	To		Au	
			192'4"-197'8" -gray-green carbonatized tuff with 70% vein material; numerous generations of qtz-ankerite veins; diss. py 2%			60455	192'4"	197'8"	5'4"	ppb	110
			197'8"-200' -reddish to gray carb. tuff with some qtz. veins and veinlets; diss. py 1%			60456	197'8'	200'	2'4"	81	
			200' - 208' -reddish to gray carb tuff; few veinlets								
			208' - 212' -about 20% qtz vein material; some veins parallel to C.A.; pyritic walls in carb tuff; 2% py			60457	208'	212'	4'	163	
			212' - 213' -green carb tuff								
			213' - 216' -20% qtz veins parallel and at 30° angle to C.A. with pyritic walls in gray and fuchsite carb tuff			60458	213'	216'	3'	103	
			216' - 238' -fuchsite and gray med. to coarse carb. tuff; barren qtz-ankerite veins								
			238' - 240' -60% qtz veinlets with ankerite and pyrite (2%) some pink feldspar?			60459	238'	240'	2'	163	
240'	239'	carbonatized mafic tuff	- gray-green, massive to foliated cut by veinlets and qtz veins; foliation-layering at 60° to C.A.								
			240' - 258' -light to gray-green carb. tuff; narrow qtz ankerite veins up to 1" with pyritic walls at 243', 246' and 254'								
			258' - 260' -qtz vein 1 1/2" at 30° to C.A. in pyritic (1%) carb. tuff; some chloritic sections			60460	258'	260'	2'	74	

\* For features such as foliation, bedding, schistosity, measured from the long axis of the core.

‡ Additional credit available. See Assessment Work Regulations.



Drilling Company <b>Norex Drilling Ltd.</b>		Collar Elevation	Bearing of hole from true North <b>S60°W</b>	Total Footage <b>700 ft.</b>	Dip of Hole at Collar <b>45</b>	Location of hole in relation to a fixed point on the claim.  <b>700 M 4170E 250'S and 400'E of No.4 Post of claim P630750</b>	Map Reference No.	Claim No. <b>P630750</b>
Date Hole Started <b>Oct. 4, 1983</b>	Date Completed <b>Oct. 7, 1983</b>	Date Logged <b>Oct. 7/83</b>	Logged by <b>W. O. Karvinen</b>	250 ft   <b>55</b>			Location (Twp., Lot, Con. or Lat. and Long.)  <b>Tooms Township</b>	Property Name <b>Sylvanite Creek</b>
Exploration Co., Owner or Optionee  <b>Quinterra Resources Ltd.</b>		Date Submitted	Submitted by (Signature)	700 ft   <b>54</b>				
				ft				

Footage		Rock Type	Description <small>Colour, grain size, texture, minerals, alteration, etc.</small>	Planar Feature Angle *	Core Specimen Footage †	Your Sample No.	Sample Footage		Sample Length	Assays ‡	
From	To						From	To		Au	ppb
			260' - 273' -gray-green carb tuff; hematization at 262'-263'; also 6" of syenite or lamprophyre at 272'6"								
			273' - 275' -90% qtz-ankerite vein with chloritic inclusions; cubic and irregular pyrite 2%			60461	273'	275'	2'	137	
			275' - 278' -carb. mafic tuff								
			278' - 279' -qtz veins 40% with pyritic walls in chloritic tuff			60462	278'	279'	1'	12	
			279' - 280' -green carb tuff								
			280' - 282' -hematized zone with diss. py and qtz veinlets 1% py			60463	280'	282'	2'	58	
			282' - 286' -green, carb mafic tuff; 1" qtz vein with bleached walls and diss py at 284'; smaller veins at 285' and 287'; veins at 40 to 80° to C.A.								
			288' - 290' -qtz veins and veinlets with pyritic, hematitic and bleached walls; 2% py			60464	288'	290'	2'	86	
			290' - 300' -green carb mafic tuff; few barren veinlets								
			300' - 301'6" -qtz ankerite veinlets with bleached pyritic walls (1% py); parallel and at 60° to C.A. in carb. tuff			60465	300'	301'6"	1'6"	95	
			301'6" - 310' -carb. mafic tuff								
			310' - 311' -qtz veins and veinlets with bleached pyritic walls; 2" vein at 310' -at 70° to C.A.			60466	310'	311'	1'	26	

\* For features such as foliation, bedding, schistosity, measured from the long axis of the core.

† Additional credit available. See Assessment Work Regulations.

Drilling Company <b>Norex Drilling Ltd.</b>		Collar Elevation	Bearing of hole from true North <b>S60°W</b>	Total Footage <b>700 ft.</b>	Dip of Hole at Collar <b>45°</b>	Location of hole in relation to a fixed point on the claim.  <b>700 N 4170E 250'S and 400'E of No.4 Post of claim P630750</b>	Map Reference No.	Claim No. <b>P630750</b>
Date Hole Started <b>Oct. 4, 1983</b>	Date Completed <b>Oct. 7, 1983</b>	Date Logged <b>Oct. 7/83</b>	Logged by <b>W. O. Karvinen</b>		<b>250 ft.   55°</b>		Location (Twp., Lot, Con. or Lat. and Long.)  <b>Tooms Township</b>	
Exploration Co., Owner or Optionee  <b>Quinterra Resources Ltd.</b>		Date Submitted	Submitted by (Signature)		<b>700 ft.   54°</b>			
					<b>ft.  </b>			Property Name <b>Sylvanite Creek</b>

Footage		Rock Type	Description <small>Colour, grain size, texture, minerals, alteration, etc.</small>	Placer Footage <small>Angle †</small>	Core Section Footage †	Your Sample No.	Sample Footage		Sample Length	Assays †	
From	To						From	To		Au	
			311' - 326' -gray-green carb. mafic tuff -few veins up to 1" thick at 90° to C.A.							ppb	
			326' - 330' -20% qtz-ankerite veins in contorted carb. tuff; some hematization; diss. py 1%			60467	326'	330'	4'	49	
			330' - 331' -gray carb. tuff								
			331' - 334' -good vein zone: ~80% qtz-ankerite vein material with good diss. py and tr. cpy greenish-gray, pyritic wall-rock inclusion -similar to trench 6 vein zone			60468	331'	334'	3'	97	
			334' - 339' -same; more chlorite and fuchsite from 336'-339'			60469	334'	339'	5'	67	
339'	370'	carbonatized ultramafic tuff	- gray to fuchsitic, med-gr., well-foliated ultramafic tuff; barren veinlets common								
			339' - 343' -20% barren veins in gray carb. tuff								
			343' - 348' -gray carb tuff								
			348' - 361' -green carb tuff; few barren veinlets								
			361' - 363' -massive, light gray siliceous qtz rock with 1% fine diss. pyrite			60470	361'	363'	2'	27	
			363' - 367'6" -contorted green to gray carb. U.M. tuff; cut by milky and clear qtz veinlets, no sulfides								
			367'6" - 370' -30% qtz-ankerite veins with diss. py 2% and tr. cpy in gray and green carb U.M. tuff			60471	367'6"	370'	2'6"	64	

Drilling Company Norex Drilling Ltd.		Collar Elevation	Bearing of hole from true North S60°W	Total Footage 700 ft.	Dip of Hole at Collar 45	Location of hole in relation to a fixed point on the claim.  700 M 4170E 250'S and 400'E of No.4 Post of claim P630750	Map Reference No.	Claim No. P630750	
Date Hole Started Oct. 4, 1983	Date Completed Oct. 7, 1983	Date Logged Oct. 7/83	Logged by W. O. Karvinen		250 ft   55		Location (Twp., Lot, Con. or Lat. and Long)		
Exploration Co., Owner or Optionee Quinterra Resources Ltd.		Date Submitted	Submitted by (Signature)		700 ft   54		Tooms Township		
					ft		Property Name Sylvanite Creek		

Footage		Rock Type	Description Colour, grain size, texture, minerals, alteration, etc.	Planar Fracture Angle*	Core Specimen Footage †	Your Sample No.	Sample Footage		Sample Length	Assays ‡	
From	To						From	To		Au	ppb
370'	400'	carb. mafic tuff	- gray-green, med. grained massive to foliated - granitized sections, particularly from 370'-373'; - also narrow to 1" veins of qtz with reddish walls;								
			396'6" - 400' -10% qtz vein material with some pyrite in walls								
400'	450'	carbonated ultramafic tuff	- gray and green, med-gr. foliated to contorted tuff; 15% vein material; diss. pyritic sections								
			400' - 404' -very dark chloritic zone with diss. cubic pyrite from 400-401'; rest is contorted tuff with 20% vein material and 3% diss. py			60472	400'	404'	4'	62	
			400' - 406' -same but no pyrite								
			406' - 409' -same with 3% diss. py			60473	406'	409'	3'	62	
			409' - 450' -gray, carbonated ultramafic tuff contorted to evenly foliated at 50° to C.A.								
450'	486'	carbonated mafic tuff	- green to gray-green, mottled lapilli tuff; - layering (foliation) at 45° to C.A. - few veinlets, no sulfides								
486'	513'	carbonated ultramafic tuff or flows	- gray, coarse to med-grained; some barren qtz-ankerite veining 488' - 494' -10% barren qtz-carb. vein material; sericitic - little fuchsite								
			494' - 510' -gray, massive carb. ultramafic								





Drilling Company <b>Norex Drilling Ltd.</b>		Collar Elevation	Bearing of hole from true North <b>S60°W</b>	Total Footage <b>700 ft.</b>	Dip of Hole at Collar <b>45</b>	Location of hole in relation to a fixed point on the claim.  <b>700 M 4170E 250'S and 400'E of No. 4 Post of claim P630750</b>	Map Reference No.	Claim No. <b>P630750</b>
Date Hole Started <b>Oct. 4, 1983</b>	Date Completed <b>Oct. 7, 1983</b>	Date Logged <b>Oct. 7/83</b>	Logged by <b>W. O. Karvinen</b>		<b>250 n   55</b>		Location (Twp., Lot, Con. or Lat. and Long.)  <b>Tooms Township</b>	Property Name <b>Sylvanite Creek</b>
Exploration Co., Owner or Optionee  <b>Quinterra Resources Ltd.</b>		Date Submitted	Submitted by (Signature)		<b>700 n   34</b>			
					<b>n  </b>			

Footage		Rock Type	Description Colour, grain size, texture, minerals, alteration, etc.	Placer Footage Angle *	Core Specimens Footage †	Your Sample No.	Sample Footage		Sample Length	Assays ‡	
From	To						From	To		Au	ppb
			510' - 513' -green carb with some veining and diss. py								
513'		carbonatized mafic tuff	- gray-green, med-grained foliated; some bleached zones with diss. pyrite; possible pillow features								
			513' - 526' -massive, green tuff								
			526' - 534'6" -several narrow veinlets with bleached walls; some pyrite								
			534'6" - 540' -granitized section; reddish to apple-green, foliated with few qtz veins up to 1"; diss. py 1%			60474	534'6"	540'	5'6"	69	
			540' - 544' -some reddish sections, light-green partly bleached tuff; 2" barren qtz vein at 544'								
			544' - 589' -gray-green carb tuff;								
			589' - 593' -same but with bleached zones and 2-3% diss. pyrite; no veins			60475	589'	593'	4'	25	
			593' - 595' -mafic tuff								
			595' - 600' -bleached, pyritic carb. tuff with some qtz veins up to 1 1/2" thick; 1% py			60476	595'	600'	5'	33	
			600' - 604' -carb. tuff, some bleaching; diss. py 1/2%								
			604' - 605'6" -diss. cubic py (3%) in chloritic tuff			60477	604'	605'6"	1'6"	27	
			605'6" - 609' -light-green, carb. mafic tuff; barren qtz vein (3/4") at 606'								

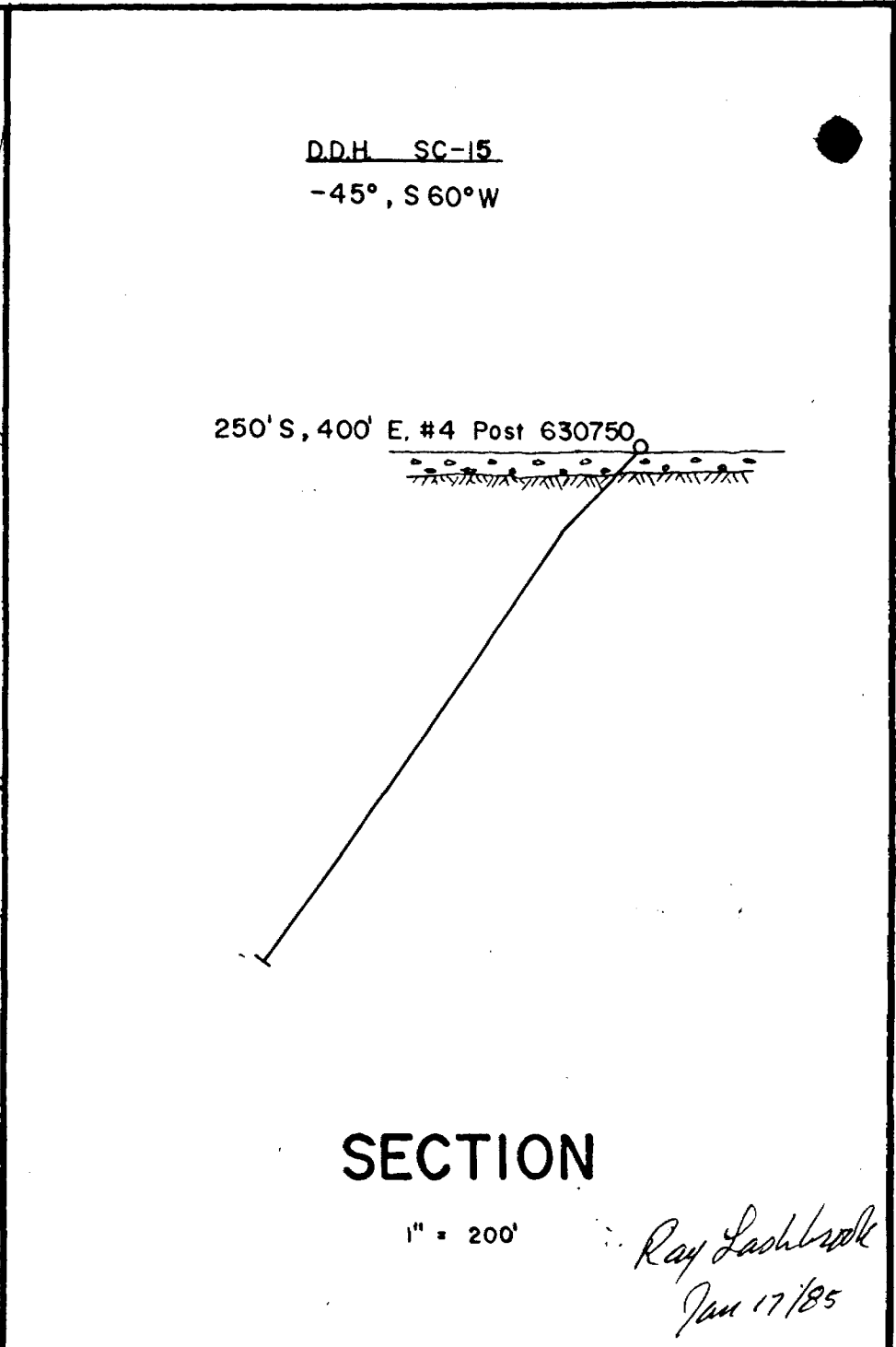
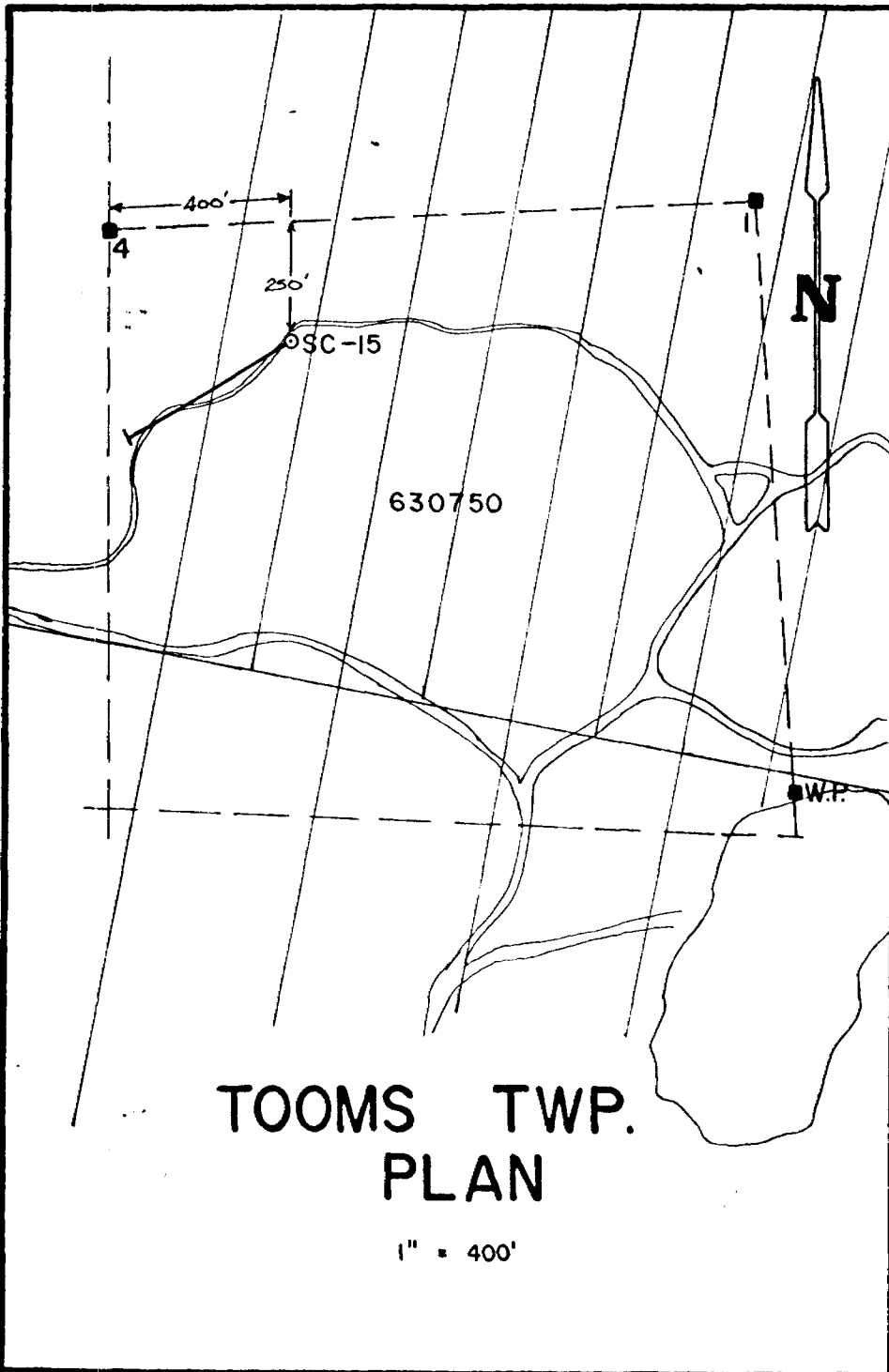
Drilling Company <b>Nofex Drilling Ltd.</b>		Collar Elevation	Bearing of hole from true North <b>S60°W</b>	Total Footage <b>700 ft.</b>	Dip of Hole at Cenar   <b>45</b>	Location of hole in relation to a fixed point on the claim.  <b>700 N 4170E 250'S and 400'E of No.4 Post of claim P630750</b>	Map Reference No.	Claim No. <b>P630750</b>
Date Hole Started <b>Oct. 4, 1983</b>	Date Completed <b>Oct. 7, 1983</b>	Date Logged <b>Oct. 7/83</b>	Logged by <b>W. O. Karvinen</b>		<b>250 ft   55</b>		Location (Twp., Lot, Con. or Lat. and Long)  <b>Tooms Township</b>	Property Name <b>Sylvanite Creek</b>
Exploration Co., Owner or Optionee  <b>Quinterra Resources Ltd.</b>		Date Submitted	Submitted by (Signature)		<b>700 ft   54</b>			

Footage		Rock Type	Description <small>Colour, grain size, texture, minerals, alteration, etc.</small>	Placer Feature Angle*	Core Specimen Footage †	Year Sample No.	Sample Footage		Sample Length	Assays ‡	
From	To						From	To		Au	
			609' - 612' -qtz. vein zone; 40% qtz-ankerite; apple-green wall rocks with 10% pyrite			60478	609'	612'	3'	ppb 49	
			612' - 615' -gray-green tuff; foliation at 45° to C.A.								
			615' - 616'6" -qtz vein with pale-green, foliated wall rocks; 5% py; vein zone 2", tr. cpy			60479	615'	616'6"	1'6"	165	
			616'6" - 620' -gray-green carb. tuff, contorted foliation; barren veinlets								
			620' - 623' -pale green, pyritic bleached tuff with qtz veins up to 1" py 1%			60480	620'	623'	3'	25	
			623' - 642' -contorted, med-green carb tuff; barren veinlets								
			642' - 643'10" -pale-green, bleached with smokey qtz veins; diss. py 1%			60481	642'	643'10"	1'10"	255	
			643'10"-700' -gray-green lapilli tuff with barren veinlets; some small veins with pale-green walls with little pyrite at 652', 653' and 656'								
			674' - 676' -hematized zone with some glassy qtz veinlets; little pyrite								
			685' - 700' -gray, lapilli tuff; foliated 45° to C.A.								
700'		end of hole									

703 (03/11)

\* For features such as foliation, bedding, schistosity, measured from the long axis of the core.

‡ Additional credit available. See Assessment Work Regulations.



Date Started Nov. 5, 1983		Date Completed Nov. 8, 1983		Date Logged Nov. 10/83		Date Submitted Dec 22/85		Map Reference No. P648670		Claim No. P648670	
Drilling Co. or Operator Quinterra Resources Inc.		Logged by W. O. Karvinen		Submitted by (Signature) <i>Ray Jashinski</i>		Dip of hole at 501 ft   45		Location of hole in relation to a fixed point on the claim. 7480E, 2120N 470'N and 70'W of No. 2 Post of Claim P648670		Location (Twp, Lot, Con. or Lat. and Long) Tooms Township Sylvanite Creek	
Drilling Co. or Operator Quinterra Resources Inc.		Logged by W. O. Karvinen		Submitted by (Signature) <i>Ray Jashinski</i>		Dip of hole at 501 ft   63		Location of hole in relation to a fixed point on the claim. 7480E, 2120N 470'N and 70'W of No. 2 Post of Claim P648670		Location (Twp, Lot, Con. or Lat. and Long) Tooms Township Sylvanite Creek	

Footage		Rock Type	Description Colour, grain size, texture, minerals, alteration, etc.	Plunge Feature Angle*	Core Specimen Footage †	Year Sample No.	Sample Footage		Sample Length	Assays ‡	
From	To						From	To		Au	
0	96'	overburden								ppb	
96'	436'	carbonatized ultramafic tuff	- gray, talc-chlorite-carbonate rock with thin interlayers of mafic tuff and chert; layering at 60° to C.A.; barren qtz-carb veinlets here and there								
			96' - 108' -carb. ultramafic tuff								
			108' - 113' -carb tuff with intercalations of chert beds up to 2" thick with layers of py (1%)		60650		108'	113'	5'	74	
			113' - 155' -gray, carb ultramafic tuff; barren veinlets								
			155' - 158' -carb mafic tuff with much alteration and hematitizat qtz-carb veins up to 1" with pyritic walls (1%)	on;	60701		155'	158'	3'	0.018	oz/ton
			158' - 248' -gray, soft, carbonatized ultramafic with barren qtz-carb veins								
			248' - 252' -silicified and hematized zone with qtz veinlets and diss. py (1%)		60702		248'	252'	4'	0.011	oz/ton
			252' - 303' -gray, carb. ultramafic tuff								
			303' - 305' -qtz-carb vein with py in chloritic inclusions		60703		303'	305'	2'	165	
			305' - 307' -carb ultramafic tuff								
			307' - 309' -fuchsite-bearing qtz veins with diss. py		60704		307'	308'	1'	189	
			309' - 310' -carb tuff								

\* For features such as foliation, bedding, schistosity, measured from the long axis of the core.

† Additional credit available. See Assessment Work Regulations.

GOREK MINING LTD.		True North 530W		Total Footage 501'	Dip of Hole at Collar 45°	Location of hole in relation to a fixed point on the claim.  7480E, 2120N 470°N and 70°W of No. 2 Post of Claim P648670	Map Reference No.	Claim No. P648670	
Date Started Nov. 5, 1983	Date Completed Nov. 8, 1983	Date Logged Nov. 10/83	Logged by W. O. Karvinen		501 ft   63°		Tooms Township	Location (Twp., Lot, Con. or Lat. and Long)	
Date Submitted		Submitted by (Signature)		ft	Property Name Sylvanite Creek				
Date Submitted		Submitted by (Signature)		ft					
Location Co., Owner or Options  Quinterra Resources Inc.									

Footage		Rock Type	Description Colour, grain size, texture, minerals, alteration, etc.	Placer Feature Angle °	Core Specimen Footage †	Your Sample No.	Sample Footage		Sample Length	Assays ‡	
From	To						From	To		Au	
			310' - 312' -reddish, siliceous zone with diss. py (1%)			60705	310'	313'	3'	165	ppb
			313' - 315' -carb ultramafic tuff								
			315' - 320' -white to gray quartz vein with some ankerite; 10% chloritic inclusions with py (1%); lower contact at 60' to C.A.			60706	315'	320'	5'	58	
			320' - 323' -carb tuff with 30% qtz vein material little sulfides			60707	320'	323'	3'	96	
			323' - 328' -same								
			328' - 332' -green carbonate with qtz-carb veins; some pyrite around veins			60708	328'	332'	4'	44	
			332' - 406' -gray to green-gray carbonatized ultramafic tuff								
			406' - 411' -gray, massive chert unit with 10% pyrite; upper contact from 406'-407' is a green carbonate with veins and diss. py			60709	406'	411'	5'	0.021	oz/ton
			411' - 416' -gray, massive chert with pyrite up to 10%; layered			60710	411'	416'	5'	0.031	oz/ton
			416' - 420' -same			60711	416'	420'	4'	147	
			420' - 422' -green carbonate with qtz veins; some py			60712	420'	422'	2'	64	
			422' - 429' -barren green carbonate with some barren veinlets								
			429' - 431' -green carbonate with 1/2" vein with pyrite running down axis of core			60713	429'	431'	2'	0.024	oz/ton

2/11

\* For features such as foliation, bedding, schistosity, measured from the long axis of the core.

† Additional credit available. See Assessment Work Regulations.

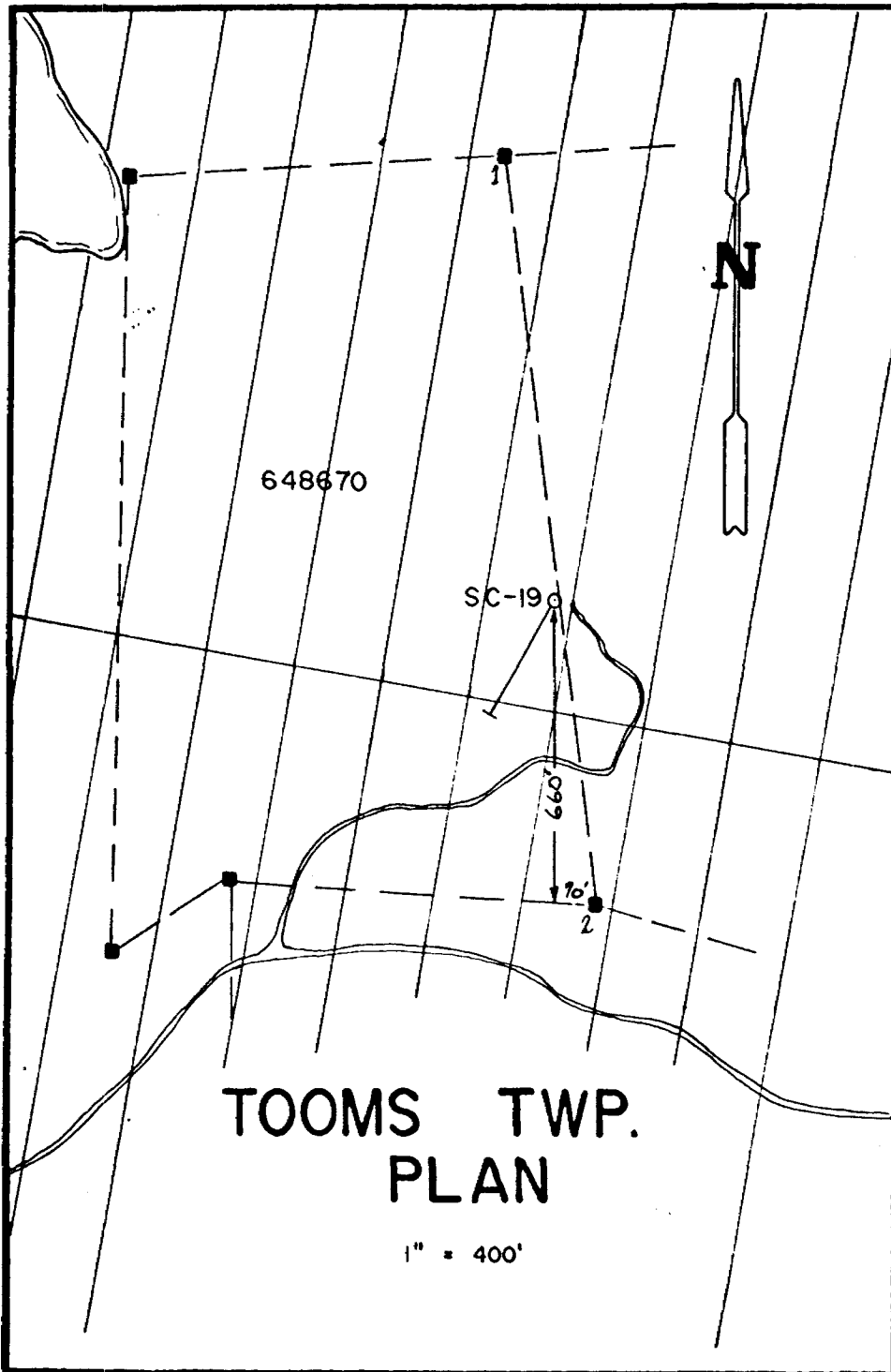
Norex Drilling Ltd.		Collar Elevation	Base of Core from True North S30W	Total Footage 501'	Dip of Hole at Collar 45°	Location of hole in relation to a fixed point on the claim.  7480E, 2120N 470'N and 70'W of No. 2 Post of Claim P648670	Map Reference No.	Claim No. P648670
Work Started Nov. 5, 1983	Date Completed Nov. 8, 1983	Date Logged Nov. 10/83	Logged by W. O. Karvinen		501 ft 63'		Location (Twp, Lot, Con or Lat and Long)  Tooms Township	Property Name Sylvanite Creek
Drilling Co., Owner or Operator  Quinterra Resources Inc.		Date Submitted	Submitted by (Signature)		ft			
					ft			

Footage From	To	Rock Type	Description Colour, grain size, texture, minerals, alteration, etc.	Planar Feature Angle *	Core Specimen Footage †	Year Sample No.	Sample Footage		Sample Length	Assays ‡	
							From	To		Au	
			431' - 436' - gray, fractured massive chert unit with 1% pyrite; green carb at upper contact from 431'-432'			60714	431'	436'	5'	ppb	247
56'	501'	carb. mafic tuff	- green-black, massive to foliated (at 70° to C.A.); some barren veins								
			436' - 464' - as above								
			464' - 466' - 1/4 to 1/2" qtz veins with hematitic and pyritic walls in tuff			60715	464'	466'	2'	315	
			466' - 477' - carb mafic tuff								
			477' - 483' - chert beds with little magnetite and qtz veinlets with some pyrite in carb tuff			60716	477'	483'	6'	0.01	02/500
			483' - 485' - carb tuff								
			485' - 489' - qtz veins and some fuchsitic carb tuff with diss. py (1%)			60717	485'	489'	4'	125	
			489' - 492' - carb mafic tuff								
			492' - 496' - greenish carb tuff with some qtz veins and diss. py			60718	492'	496'	4'	276	
			496' - 499' - same			60719	496'	499'	3'	167	
			499' - 500' - greenish carb mafic tuff								
1'		end of hole									

2/11

\* For features such as foliation, bedding, schistosity, measured from the long axis of the core.

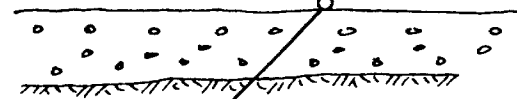
‡ Additional credit available. See Assessment Work Regulations.



D.D.H. SC-19

-45°, S 30°W

660' N, 70' W of #2 Post 648670



**SECTION**

1" = 200'

*Ray Lealbrook*  
Jan 17/85



Ministry of  
Natural  
Resources

Report  
of Work

*TOOMS TWP. #0.*



41010NW0052 25 TOOMS

900

Name and Postal Address of Recorded Holder  
**QUINTERRA RESOURCES INCORPORATED**  
*Looms & Henlaw*  
 Inspector's License No. **T-1312**  
**P.O. BOX 447, 321 ALGONQUIN AVENUE, NORTH BAY, ONTARIO P1B 8J1**

Summary of Work Performance and Distribution of Credits

Total Work Days Cr. claimed 1521	Mining Claim			Mining Claim			Mining Claim		
	Prefix	Number	Work Days Cr.	Prefix	Number	Work Days Cr.	Prefix	Number	Work Days Cr.
for Performance of the following work. (Check one only) <input type="checkbox"/> Manual Work <input type="checkbox"/> Shaft Sinking Drifting or other Lateral Work. <input type="checkbox"/> Compressed Air, other Power driven or mechanical equip. <input type="checkbox"/> Power Stripping <input checked="" type="checkbox"/> Diamond or other Core drilling <input type="checkbox"/> Land Survey	P	631345	14.8	P	630754	42.35	P	648679	20
		631346	37.7		630755	42.35		648680	20
		631347	37.7		648051	44.35		648681	20
		631348	37.7		648052	33.40		648682	20
		631349	37.7		648053	44.35		648683	20
		631350	37.7		648054	82.35		682151	20
		631351	37.7		648677	20.		682152	20
		631352	37.7		648678	20.		682153	20

All the work was performed on Mining Claim(s): 630745, ~~631747~~, 630750, 648670 SEE ATTACHED LIST.

Required Information eg: type of equipment, Names, Addresses, etc. (See Table Below)

**B.Q. WIRELINE DIAMOND DRILL**  
**NOREX DRILLING LIMITED**  
**P.O. BOX 88,**  
**PORCUPINE, ONTARIO.**

SEE ATTACHED DIAGRAMS.

HOLE SC-13 Sept 25th to Sept 26th, 1983 320'

HOLE SC-15 Oct 4th to Oct 7th, 1983 700'

HOLE SC-19 Nov 5th to Nov 8th, 1983 501'  
1,521'

**RECORDED**

JAN 23 1985

Receipt No. *[Signature]*

PROVINCIAL MINING DIVISION

**RECEIVED**

JAN 23 1985

7:18 AM 10:10 AM 1:20 PM 3:45 PM

FEB 7 1985

RECEIVED

Date of Report Jan 22, 1985	Recorded Holder or Agent (Signature) <i>Ray Lashbrook</i>
--------------------------------	--

Certification Verifying Report of Work

I hereby certify that I have a personal and intimate knowledge of the facts set forth in the Report of Work annexed hereto, having performed the work or witnessed same during and/or after its completion and the annexed report is true.

Name and Postal Address of Person Certifying  
**RAYMOND LASHBROOK**  
**P.O. BOX 447, NORTH BAY, ONTARIO.**

Date Certified Jan 22, 1985. Certified by (Signature) *Ray Lashbrook*

Table of Information/Attachments Required by the Mining Recorder

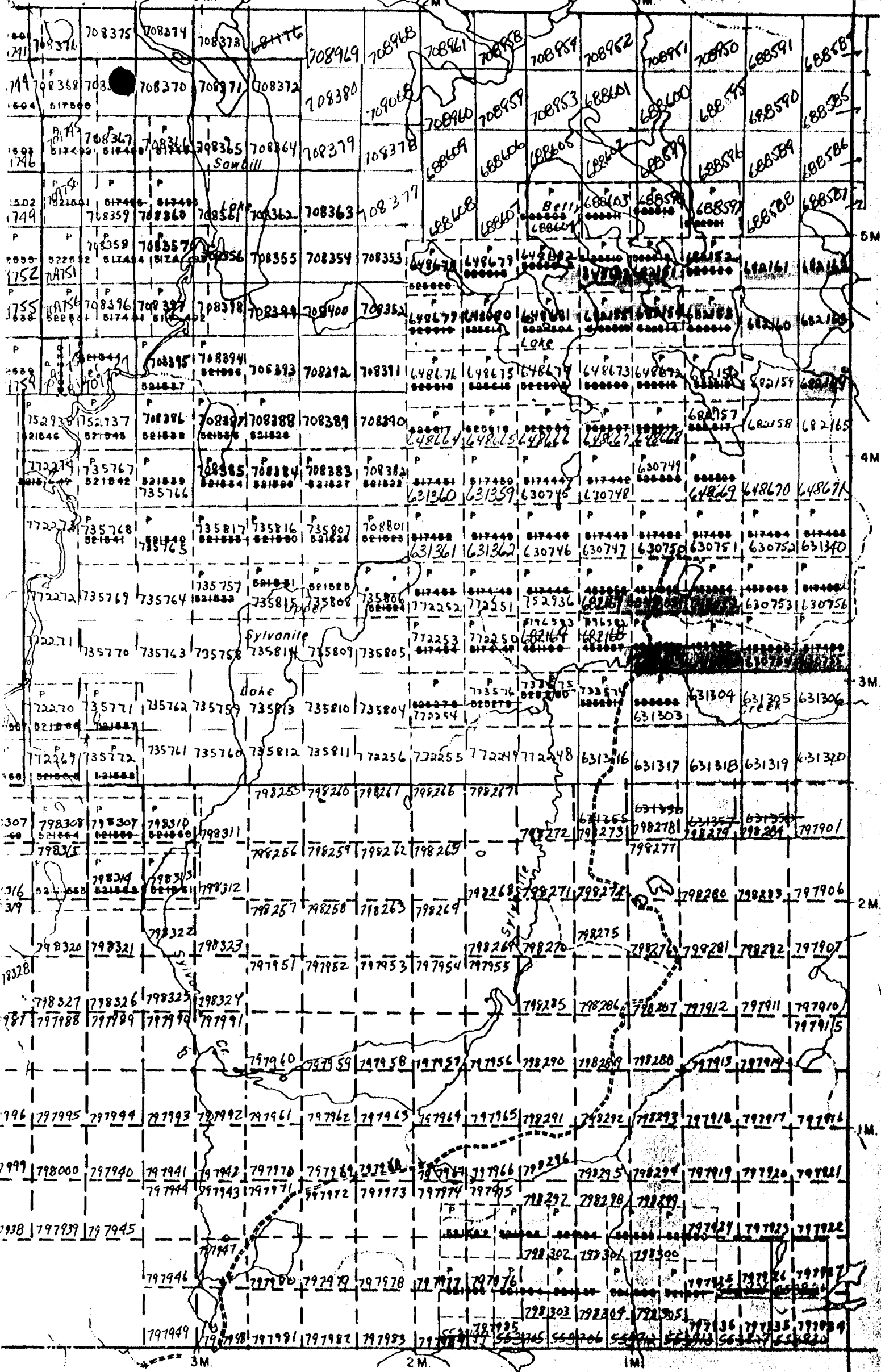
Type of Work	Specific information per type	Other information (Common to 2 or more types)	Attachments
Manual Work	Nil	Names and addresses of men who performed manual work/operated equipment, together with dates and hours of employment.	Work Sketch: these are required to show the location and extent of work in relation to the nearest claim post.
Shaft Sinking, Drifting or other Lateral Work			
Compressed air, other power driven or mechanical equip.	Type of equipment	Names and addresses of owner or operator together with dates when drilling/stripping done.	
Power Stripping	Type of equipment and amount expended. Note: Proof of actual cost must be submitted within 30 days of recording.		
Diamond or other core drilling	Signed core log showing: footage, diameter of core, number and angles of holes.		Work Sketch (as above) in duplicate
Land Survey	Name and address of Ontario land surveyor.	Nil	Nil



CLAIMS NUMBERS	DAYS.
P- 682154	20
682155	20
682160	20
682161	20
682162	20
682163	20
682167	60
708352	20
708353	20
708354	20
708355	20
708356	20
708357	20
708360	20
708361	20
708362	20
708363	13.15
708382	20
708383	20
708384	20
708385	20
708386	20
708387	20
708388	20
708389	20
708390	20
708391	20
708392	20
708393	20
708394	20
708395	20
708397	20
708398	20
708399	20
708400	20
708801	20
	<u>1,521</u>

*Ray G. ...*  
*Jan. 22, 85*





Eisenhower Twp. M.781

*Too no map*



Ministry of  
Natural  
Resources  
Ontario

Report  
of Work

W8506.019

# 019/85

The Mining Act

TOOM'S TWP.

Instructions - Supply required data on a separate form for each type of work to be recorded (see table below).  
- For Geo-technical work use form no. 1362 "Report of Work (Geological, Geophysical, Geochemical and Expenditures)".

Name and Postal Address of Recorded Holder	Prospector's Licence No.
QUINTERRA RESOURCES INCORPORATED.	T-1312
P.O. BOX 447, 321 Algonquin Avenue, NORTH BAY, ONTARIO P1B 8J1	

Summary of Work Performance and Distribution of Credits

Total Work Days Cr. claimed	Mining Claim			Work Days Cr.	Mining Claim			Work Days Cr.	
	Prefix	Number	Work Days Cr.		Prefix	Number	Work Days Cr.		
1,395									
for Performance of the following work. (Check one only)	P	631359	24.5	P	630751	42.35	P	682157	120.0
<input type="checkbox"/> Manual Work		631360	24.5		630752	42.35		648672	120.0
<input type="checkbox"/> Shaft Sinking Drifting or other Lateral Work.		631361	24.5		631340	39.0		648673	120.0
<input type="checkbox"/> Compressed Air, other Power driven or mechanical equip.		631362	24.5		648664	120.0		648674	7.6
<input type="checkbox"/> Power Stripping		630745	45.7		648665	70.0			
<input checked="" type="checkbox"/> Diamond or other Core drilling		648669	120.0		648666	70.0			
<input type="checkbox"/> Land Survey		648670	120.0		648667	70.0			
		648671	120.0		648668	70.0			

All the work was performed on Mining Claim(s): P630745, 630746.

Required Information eg: type of equipment, Names, Addresses, etc. (See Table Below):

B Q WIRELINE DIAMOND DRILLING:  
NOREX DRILLING LIMITED  
P.O. BOX 88,  
PORCUPINE, ONTARIO.

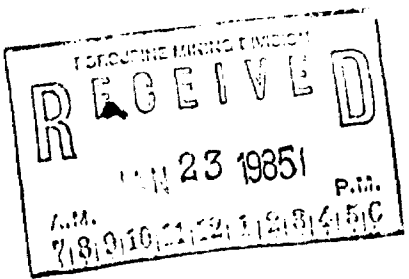
SEE ATTACHED DIAGRAMS.

HOLE 83-1 Aug 3rd to Aug 5th, 1983 357'  
HOLE 83-2 Aug 7th to Aug 10th, 1983 601'  
HOLE 83-3 Aug 11th to Aug 12th, 1983 437'  
1,395

RECEIVED  
FEB 7 1985  
20 CLAIMS

RECORDED  
JAN 23 1985  
Receipt No. *C*

Date of Report: January 17, 1985  
Recorded Holder or Agent (Signature): *Ray Lashbrook*



Certification Verifying Report of Work

I hereby certify that I have a personal and intimate knowledge of the facts set forth in the Report of Work annexed hereto, having performed the work or witnessed same during and/or after its completion and the annexed report is true.

Name and Postal Address of Person Certifying

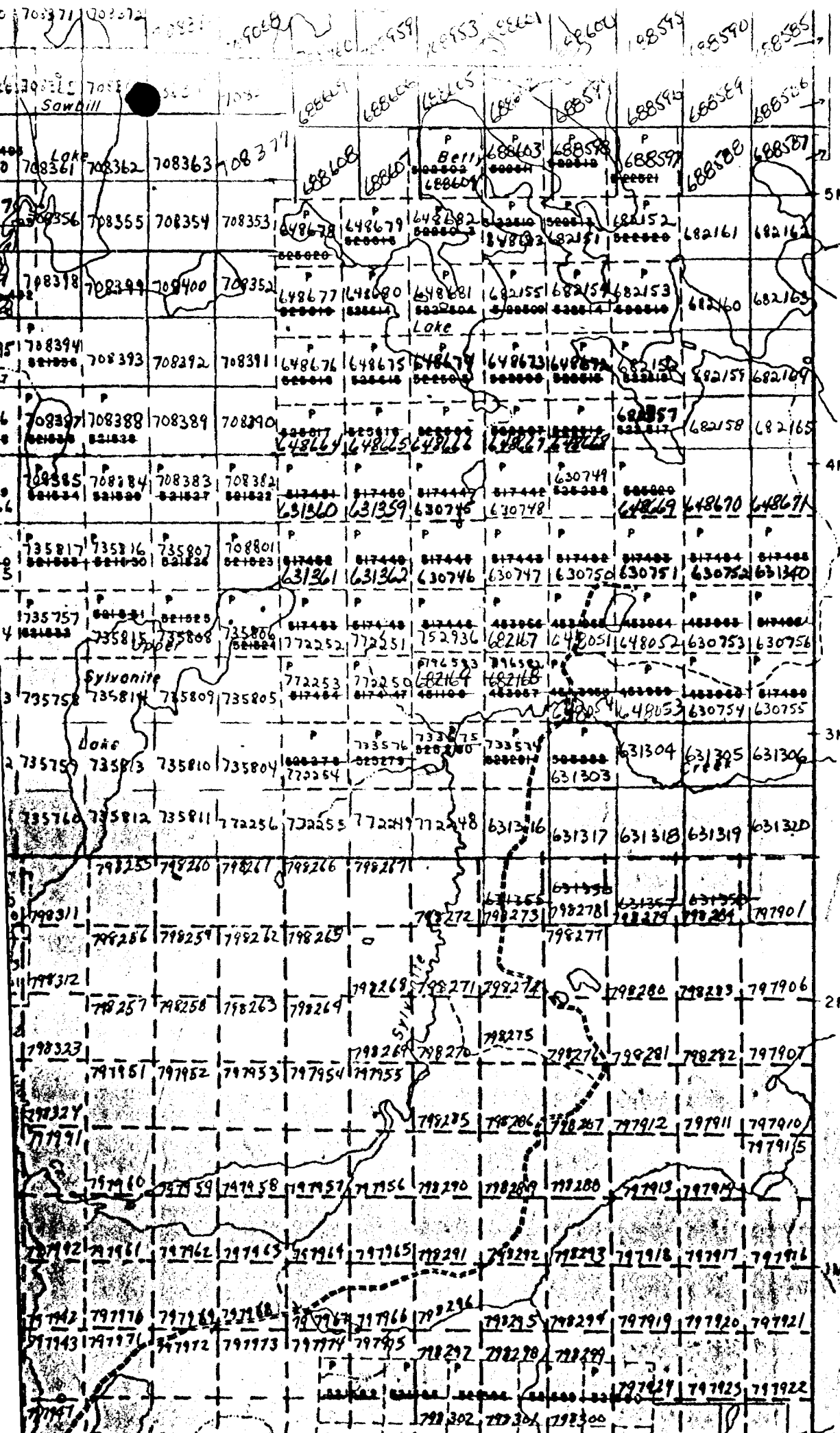
Mr. Ray Lashbrook

Date Certified: Jan 17, 1985  
Certified by (Signature): *Ray Lashbrook*

P.O. BOX 447, North Bay, Ont. P1B 8J1

Table of Information/Attachments Required by the Mining Recorder

Type of Work	Specific information per type	Other information (Common to 2 or more types)	Attachments
Manual Work	Nil	Names and addresses of men who performed manual work/operated equipment, together with dates and hours of employment.	Work Sketch: these are required to show the location and extent of work in relation to the nearest claim post.
Shaft Sinking, Drifting or other Lateral Work			
Compressed air, other power driven or mechanical equip.	Type of equipment	Names and addresses of owner or operator together with dates when drilling/stripping done.	
Power Stripping	Type of equipment and amount expended. Note: Proof of actual cost must be submitted within 30 days of recording.		
Diamond or other core drilling	Signed core log showing: footage, diameter of core, number and angles of holes.	Nil	Work Sketch (as above) in duplicate
Land Survey	Name and address of Ontario land surveyor.		Nil



100ms  
Twp.  
M-1159

Greenlaw Twp. - M. 895

PATE  
CROW  
LEASE  
LOCAT  
LICEN  
MINI  
SURFA  
ROAD  
IMPRC  
KING  
RAILW  
POWER  
MARSH  
MINES  
CANCE

400  
all

#02 9/85

W8506.079

Mining Act

Name and Postal Address of Recorded Holder. <b>QUINTERRA RESOURCES INCORPORATED</b> P.O. BOX 447, 321 Algonquin Avenue, NORTH BAY, ONT. P1B 8J1	Inspector's Licence No. <b>T-1312</b>
---	--

Summary of Work Performance and Distribution of Credits

Total Work Days Cr. claimed <b>787</b>	Mining Claim			Mining Claim			Mining Claim		
	Prefix	Number	Work Days Cr.	Prefix	Number	Work Days Cr.	Prefix	Number	Work Days Cr.
for Performance of the following work. (Check one only) <input type="checkbox"/> Manual Work <input type="checkbox"/> Shaft Sinking Drifting or other Lateral Work. <input type="checkbox"/> Compressed Air, other Power driven or mechanical equip. <input type="checkbox"/> Power Stripping <input checked="" type="checkbox"/> Diamond or other Core drilling <input type="checkbox"/> Land Survey	P	631321	10.1	P	631329	37.7	P	631339	37.7
		631322	37.7		631330	37.7		631341	37.7
		631323	37.7		631333	37.7		631342	37.7
		631324	37.7		631334	37.7		631343	37.7
		631325	37.7		631335	37.7		631344	37.7
		631326	37.7		631336	37.7		631345	22.9
		631327	37.7		631337	37.7			
		631328	37.7		631338	37.7			

All the work was performed on Mining Claim(s): **630745, 630746**

Required Information eg: type of equipment, Names, Addresses, etc. (See Table Below)

HOLE SC-5 January 13th to January 19th, 1983

787'

ONTARIO GEOLOGICAL SURVEY  
ASSESSMENT FILES  
RESEARCH OFFICE  
FEB 7 1985  
RECEIVED

22 CLAIMS

RECORDED  
JAN 23 1985  
Receipt No. *Cf*

FOR ROUTINE MINING DIVISION  
RECEIVED  
JAN 23 1985 P.M.  
A.M. 7 8 9 10 11 12 1 2 3 4 5 6

Date of Report January 17, 1985	Recorded Holder or Agent (Signature) <i>Ray Lashbrook</i>
------------------------------------	--

Certification Verifying Report of Work

I hereby certify that I have a personal and intimate knowledge of the facts set forth in the Report of Work annexed hereto, having performed the work or witnessed same during and/or after its completion and the annexed report is true.

Name and Postal Address of Person Certifying <b>RAYMOND LASHBROOK</b> P.O. BOX 447, NORTH BAY, ONT. P1B 8J1	Date Certified Jan 17, 1985.	Certified by (Signature) <i>Ray Lashbrook</i>
---	---------------------------------	--

Table of Information/Attachments Required by the Mining Recorder

Type of Work	Specific information per type	Other information (Common to 2 or more types)	Attachments
Manual Work	Nil	Names and addresses of men who performed manual work/operated equipment, together with dates and hours of employment.	Work Sketch: these are required to show the location and extent of work in relation to the nearest claim post.
Shaft Sinking, Drifting or other Lateral Work			
Compressed air, other power driven or mechanical equip.	Type of equipment	Names and addresses of owner or operator together with dates when drilling/stripping done.	
Power Stripping	Type of equipment and amount expended. Note: Proof of actual cost must be submitted within 30 days of recording.		
Diamond or other core drilling	Signed core log showing; footage, diameter of core, number and angles of holes.	Nil	Work Sketch (as above) in duplicate
Land Survey	Name and address of Ontario land surveyer.		Nil











Ministry of  
Natural  
Resources

Report  
of Work

#031/85

Instructions - Supply required data on a separate form for each type of work to be recorded (see table below).  
- For Geo-technical work use form no. 1362 "Report of Work (Geological, Geophysical, Geochemical and Expenditures)".

Tooms TWP.

W9506.031

Mining Act

Name and Postal Address of Recorded Holder <b>QUINTERRA RESOURCES INCORPORATED</b>	Prospector's Licence No. <b>T-1312</b>
<b>P.O. BOX 447, 321 Algonquin Avenue, NORTH BAY, ONT. P1B 8J1</b>	

Summary of Work Performance and Distribution of Credits

Total Work Days Cr. claimed <b>989'</b>	Mining Claim			Mining Claim			Mining Claim		
	Prefix	Number	Work Days Cr.	Prefix	Number	Work Days Cr.	Prefix	Number	Work Days Cr.
for Performance of the following work. (Check one only) <input type="checkbox"/> Manual Work <input type="checkbox"/> Shaft Sinking Drifting or other Lateral Work. <input type="checkbox"/> Compressed Air, other Power driven or mechanical equip. <input type="checkbox"/> Power Stripping <input checked="" type="checkbox"/> Diamond or other Core drilling <input type="checkbox"/> Land Survey	P	682156	120	P	630756	95.7			
		682158	120		648052	10.95			
		682159	120						
		682164	120						
		682165	120						
		648675	120						
		648676	120						
	630753	42.35							

All the work was performed on Mining Claim(s): **P630745, 630746, 630747, 630748, 630749, 630750, 630751, 630752, 630753, 630754, 630755, 630756, 630757, 630758, 630759, 630760, 630761, 630762, 630763, 630764, 630765, 630766, 630767, 630768, 630769, 630770, 630771, 630772, 630773, 630774, 630775, 630776, 630777, 630778, 630779, 630780, 630781, 630782, 630783, 630784, 630785, 630786, 630787, 630788, 630789, 630790, 630791, 630792, 630793, 630794, 630795, 630796, 630797, 630798, 630799, 630800, 630801, 630802, 630803, 630804, 630805, 630806, 630807, 630808, 630809, 630810, 630811, 630812, 630813, 630814, 630815, 630816, 630817, 630818, 630819, 630820, 630821, 630822, 630823, 630824, 630825, 630826, 630827, 630828, 630829, 630830, 630831, 630832, 630833, 630834, 630835, 630836, 630837, 630838, 630839, 630840, 630841, 630842, 630843, 630844, 630845, 630846, 630847, 630848, 630849, 630850, 630851, 630852, 630853, 630854, 630855, 630856, 630857, 630858, 630859, 630860, 630861, 630862, 630863, 630864, 630865, 630866, 630867, 630868, 630869, 630870, 630871, 630872, 630873, 630874, 630875, 630876, 630877, 630878, 630879, 630880, 630881, 630882, 630883, 630884, 630885, 630886, 630887, 630888, 630889, 630890, 630891, 630892, 630893, 630894, 630895, 630896, 630897, 630898, 630899, 630900, 630901, 630902, 630903, 630904, 630905, 630906, 630907, 630908, 630909, 630910, 630911, 630912, 630913, 630914, 630915, 630916, 630917, 630918, 630919, 630920, 630921, 630922, 630923, 630924, 630925, 630926, 630927, 630928, 630929, 630930, 630931, 630932, 630933, 630934, 630935, 630936, 630937, 630938, 630939, 630940, 630941, 630942, 630943, 630944, 630945, 630946, 630947, 630948, 630949, 630950, 630951, 630952, 630953, 630954, 630955, 630956, 630957, 630958, 630959, 630960, 630961, 630962, 630963, 630964, 630965, 630966, 630967, 630968, 630969, 630970, 630971, 630972, 630973, 630974, 630975, 630976, 630977, 630978, 630979, 630980, 630981, 630982, 630983, 630984, 630985, 630986, 630987, 630988, 630989, 630990, 630991, 630992, 630993, 630994, 630995, 630996, 630997, 630998, 630999, 631000**

Required Information eg: type of equipment, Names, Addresses, etc. (See Table Below)

**BQ WIRELINE DIAMOND DRILLING**  
**NOREX DRILLING LIMITED**  
**P.O. BOX 88**  
**PORCUPINE, ONTARIO.**

SEE ATTACHED DIAGRAMS.

HOLE SC-10 Sept 17th to Sept 19th, 1983. 300'  
HOLE SC-11 Sept 20th to Sept 22nd, 1983. 375'  
HOLE SC-12 Sept 23rd, 1983 106'  
HIKE SC012A Sept 23rd to Sept 24th, 1983. 208'  
**989'**

**10 CLAIMS**

**RECORDED**  
**JAN 23 1985**  
Receipt No.                     

**RECEIVED**  
JAN 23 1985  
P.M.  
710-910-2211

Date of Report: **Jan 17, 1985**  
Recorded Holder or Agent (Signature): *Ray Lashbrook*

Certification Verifying Report of Work

I hereby certify that I have a personal and intimate knowledge of the facts set forth in the Report of Work annexed hereto, having performed the work or witnessed same during and/or after its completion and the annexed report is true.

Name and Postal Address of Person Certifying  
**RAYMOND LASHBROOK**

P.O. BOX 447, NORTH BAY, ONT. P1B 8J1

Date Certified: **Jan 17, 1985.**  
Certified by (Signature): *Ray Lashbrook*

Table of Information/Attachments Required by the Mining Recorder

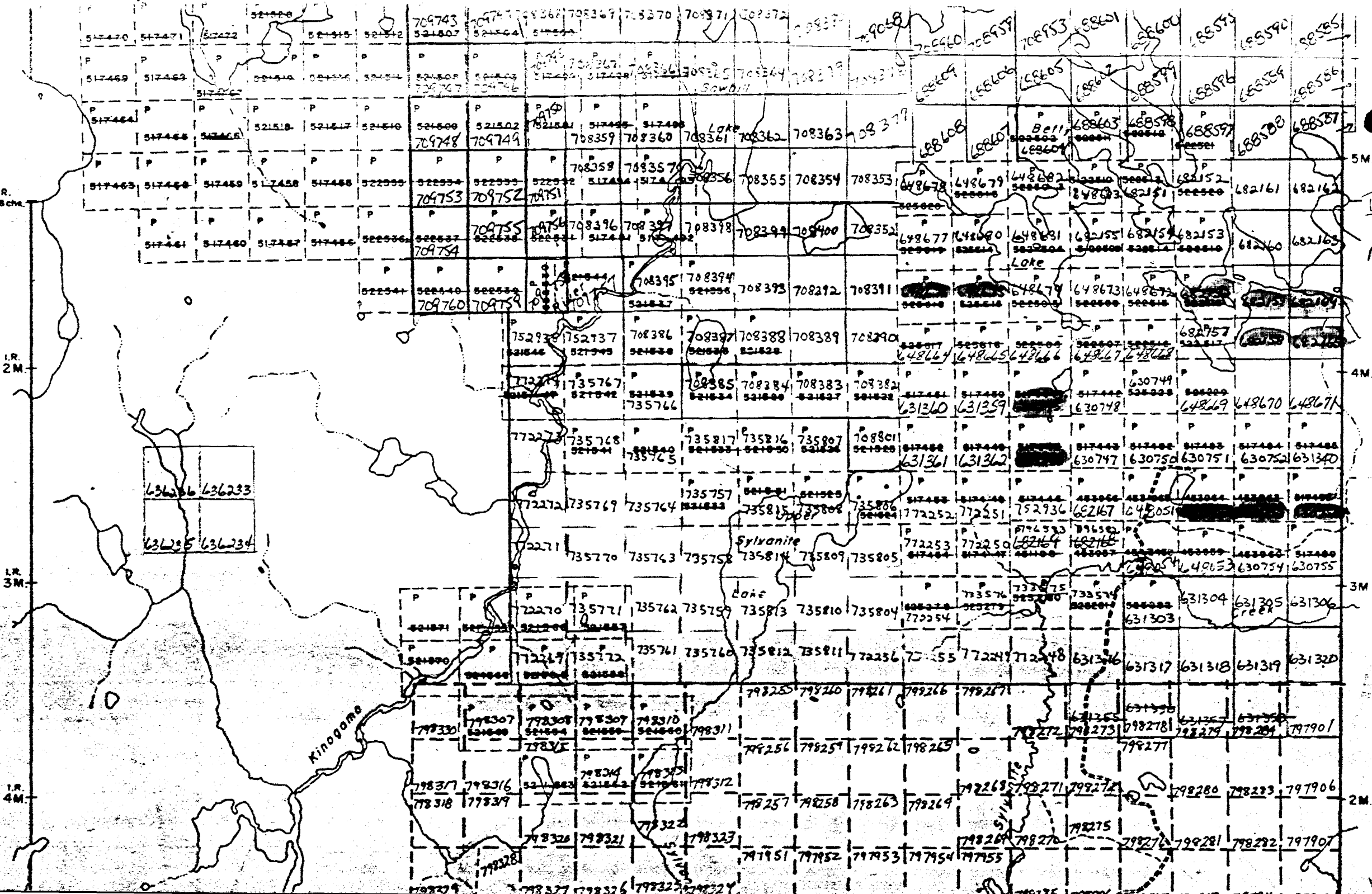
Type of Work	Specific information per type	Other information (Common to 2 or more types)	Attachments
Manual Work	Nil	Names and addresses of men who performed manual work/operated equipment, together with dates and hours of employment.	Work Sketch: these are required to show the location and extent of work in relation to the nearest claim post.
Shaft Sinking, Drifting or other Lateral Work			
Compressed air, other power driven or mechanical equip.	Type of equipment	Names and addresses of owner or operator together with dates when drilling/stripping done	Work Sketch (as above) in duplicate
Power Stripping	Type of equipment and amount expended. Note: Proof of actual cost must be submitted within 30 days of recording.		
Diamond or other core drilling	Sketch of core top showing footage, diameter of core, number and diameters of rods.	Nil	Nil
Land Survey	Name and address of Ontario land surveyor.		

INDIAN RESERVE No. 76 A

I.R. 1M, 2M, 3M, 4M

Greenlaw Twp. - M. 895

Boons map M-1159



636236 636233  
636235 636234

Kinogomo

Lake

Sylvanite

Lake

Bell's

5M.

4M.

3M.

2M.