



41010NW0053 27 TOOMS

DIAMOND DRILLING

TOWNSHIP: TOOMS TWP.

REPORT NO: 27

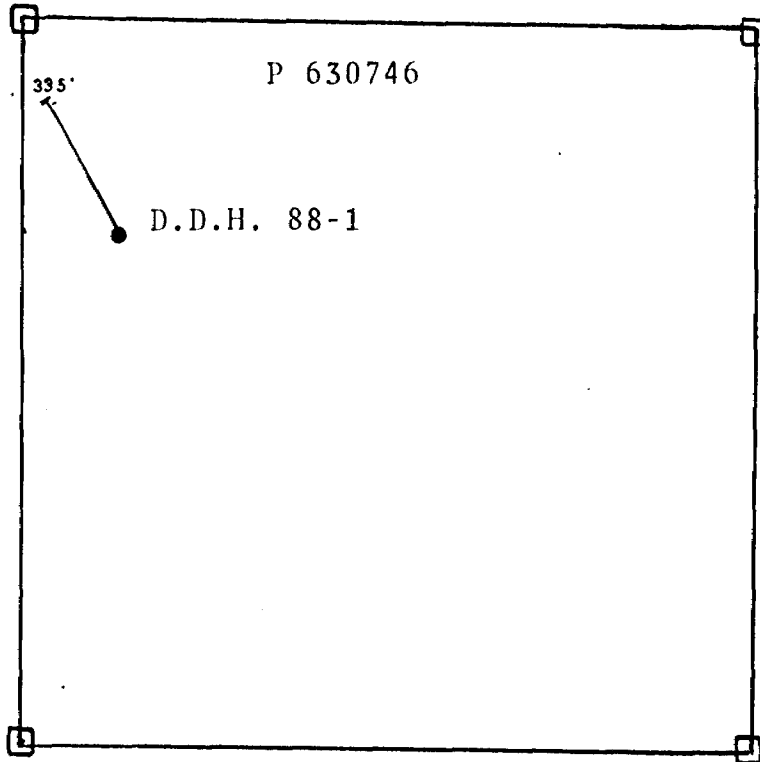
WORK PERFORMED FOR: Quinterra Resources Inc.

RECORDED HOLDER: Same as Above [xx]
: Other []

<u>Claim No.</u>	<u>Hole No.</u>	<u>Footage</u>	<u>Date</u>	<u>Note</u>
P 630746	88-1	335'	Jan/88	(1)
	88-2	361'	Jan/88	(1)
P 630745	88-3	751'	Jan/88	(1)
P 630747	88-4	465'	Jan/88	(1)
P 648667	88-5	355'	Jan/88	(1)
	88-6	505'	Jan/88	(1)
	88-7	555'	Jan-Feb/88	(1)
P 648666	88-8	495'	Feb/88	(1)
P 648682 ⁹	88-9	535'	Feb/88	(1)
P 648671 ²	88-10	505'	Feb/88	(1)
P 648667	88-11	515'	Feb/88	(1)
	88-12	495'	Feb/88	(1)
P 648675 ⁷	88-13	605'	Feb/88	(1)

13DDM/6477

Notes: (1) #W8806.152, filed in Nov/88



	QUINTERRA RESOURCES INC.	
	SYLVANITE CREEK PROPERTY	
	D.D.H. 88-1 Location	
	Tooms Twp.	1" = 400'

ONTARIO GEOLOGICAL SURVEY
 ASSESSMENT FILES
 OFFICE
 JUN 23 1988
 RECEIVED

DIAMOND DRILL LOG

PROJECT: SYLVANITE CREEK
 COMPANY: QUINTERRA RESOURCES
 HOLE NO: SC-88-1
 AZIMUTH: 330°
 LOGGED BY: JOHN GOODWIN
 DRILLED BY: LONGYEAR

NTS: 410/10
 LOCATION: L13+75E/0+50N
 DIP AT COLLAR: -45°
 At 335' -53°
 DATE: START - JAN. 19/88
 FINISH - JAN. 21/88

Remarks: Hole intersected favourable lithologies but did not return values similar to SC-3.

LOG

- 0.0-140.0 OVERBURDEN
- 140.0-143.0 Boulders - mafic volcanics, f.g. siliceous intrusive.
- 143.0-212.6 Ultramafic Tuff - pale grey, soft, moderate talc. alteration, moderate - strong foliation @ 40-45 degs./CA.
 198.6-201.5 - Q.F.P. - dark grey, hard, indistinct - felds par phenocrysts to 1/4", 1% f.g. diss. py, 2" chlorite alteration at upper and lower contact @ 40 degs./CA.
- 212.6-213.0 Mafic Volcanics - pale green grey, lower contact indistinct @ 40 degs/CA, 5% cubic pyrite to 3/8".
- 213.0-222.0 Lean Iron Formation - beds to 3" peppered with 10% magnetite crystals to 1/8", interbedded siliceous beds to 2", 10% patches/smears of pyrite to 10%, weak sericite alteration, banding/bedding @ 40 degs./CA.
- 222.0-235.2 Mafic-Intermediate Tuff - pale green-grey, medium grained, moderate carbonate/chlorite alteration, general thin irregular quartz-carbonate veins to 1", nil to trace py.
- 235.2-240.6 Felsic - Intermediate Tuff - pale grey-green, hard, f.g., numerous tension fractures to 1/8" filled with quartz and usually parallel to core axis, foliation at 45 degs/CA.
 236.2-2" chert horizon with 5% py @ 45 degs/CA.
- 240.6-267.0 Mafic Tuff - dark green-grey, moderately soft with carbonate/chlorite alteration, 1-2% diss py to 1/16" scattered irregular patches of quartz/carbonate to 3".
- 267.0-305.0 Intermediate Tuff - pale green-grey, mod. hard.
 269.5-271.5 - Siliceous Intrusive - pale pink-grey, numerous tiny xenoliths of host rock to 1/4" randomly distributed. 1% f.g. diss. pyrite. UC irregular, LC sharp @ 90 degs.

SC-88-1

280.0-280.6 - Aplite Dyke - pale pink-grey, f.g., hard, contacts sharp @ 70 degs, tr-1% f.g. diss. py.

281.7-288.0 - Aplite Dyke - similar to 280.0-280.6 weak porphyritic texture, UC/LC sharp 45 degs. 1% f.g. diss. py.

288.0-305.0 - Intermediate Tuff - contains scattered thin seams/patches quartz to 1/2" - some parallel to CA. 1% diss py in cubes to 1/8". Foliation/bedding @45 degs.

305.0-310.0 Mafic Tuff - coarse grained, mod. carbonate/chlorite alteration, trace f.g. diss py.

310.0-314.0 Intermediate Tuff - pale grey-green, f-mg. well foliated @ 45 degs.

314.0-324.0 Felsic - Intermediate Tuff - light grey, hard, f.g. cherty beds with v.f.g. diss py + sericite to 1-2%. Possible lapilli tuff with fragments to 1/4".

324.0-335.0 Q.F.P. - dark grey, hard, phenos to 1/4", scattered q.v. to 2" with 2-3% v.f.g. diss. py along contacts.

335.0 End of hole.

CORE SAMPLES

HOLE NO: SC-88-1

SAMPLE NUMBER	INTERVAL FROM - TO	SAMPLE LENGTH	ASSAYS	
			PPB	OZ
71108	198.6 - 201.5		721	
09	212.6 - 217.0		258	
10	217.0 - 222.0		131	
11	222.0 - 226.0		41	
12	226.0 - 231.0		29	
13	231.0 - 235.0		97	
14	235.0 - 240.0		144	
15	240.0 - 245.0		31	
16	245.0 - 250.0		63	
17	250.0 - 255.0		59	
18	255.0 - 260.0		111	
19	260.0 - 265.0		67	
71120	265.0 - 269.5		55	
21	269.5 - 271.5		59	
22	271.5 - 277.0		63	
23	277.0 - 281.7		71	
24	281.7 - 285.0		55	
25	285.0 - 288.0		59	
26	288.0 - 292.0		104	
27	292.0 - 295.0		75	
28	295.0 - 300.0		31	
29	300.0 - 305.0		50	
71130	314.0 - 319.0		45	
31	319.0 - 324.0		67	
32	324.0 - 328.0		23	
33	328.0 - 332.0		19	
34	332.0 - 335.0		41	

1+00N

2+00N

3+00N

Note: Casing dropped in sandy overburden

Overburden

Ultramafic Tuff

Mafic Tuff
Lean I.P.

Mafic Tuff
Felsic Tuff

Mafic Tuff

Siliceous Intrusive
Mafic Tuff

Aplite Dykes


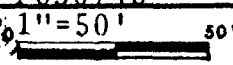
Mafic Tuff

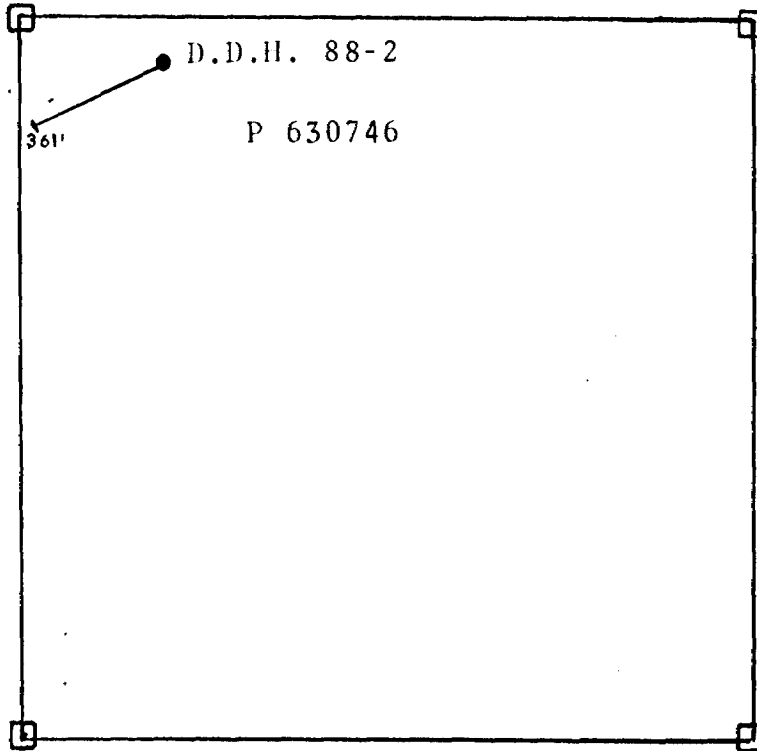
Mafic Tuff

Felsic Tuff

Q.F.P.

335'

<i>noramco</i> explorations inc.				<i>explorations</i> noramco inc.	
QUINTERRA RESOURCES INC. SYLVANITE CREEK PROPERTY D.D.H. 88-1 Section Looking West					
NO: 88-1		Log by: J.R. Goodwin		Date: 19/01/88	
Location: L 13+75 E; 0+50 N					
Azimuth: 330°			Depth: 335'		
Dip: -50°			Claim: P630746		
Drawn by: J.R.G.			Scale: 1" = 50'		
Date: 19/03/83					



	QUINTERRA RESOURCES INC.	
	SYLVANITE CREEK PROPERTY	
	D.D.H. 88-2 Location	
	Tooms Twp.	1" = 400'

JUN 23 1988

RECEIVED

DIAMOND DRILL LOG

PROJECT: SYLVANITE CREEK
COMPANY: QUINTERRA RESOURCES INC.
HOLE NO: SC-88-2
AZIMUTH: 245°
LOGGED BY: JOHN GOODWIN
John Goodwin
DRILLED BY: LONGYEAR

COST CODE NO. 1408

NTS: 410/10

LOCATION: L14+00E/3+50N

DIP AT COLLAR: -45°
At 361' -49°

DATE: START - JAN. 21/88
FINISH - JAN. 23/88

LOG

- 0.0-88.0 OVERBURDEN
- 88.0-95.2 Felsic - Intermediate Tuff - light grey, hard, f-mg. bedding @ 80 degs.
92.0-92.8 - lapilli tuff with 2% diss py.
- 95.2-109.0 Intermediate - Mafic Flow/Tuff - pale green-grey, possible pillow structures,
106.0-109.0 - becomes finer grained and lighter grey (tuffaceous) LC sharp @ 70 degs.
- 109.0-115.6 Felsic - Intermediate Tuff - similar to 88.0-95.2.
- 115.6-118.8 Iron Formation - dark green, hard, thin beds of magnetite to 1" with siliceous
beds to 1/4" 80% magnetite, 10% py as cubes to 1/4".
17.7-118.5 - blue grey q.v. with plagioclase phenos to 1/8", 20% f.g. diss and
cubes of py to 1/4".
- 118.8-127.3 Felsic - Intermediate Tuff - light grey, hard, poorly bedded/foliated.
118.8-120.0 - several scattered q.v. to 1/4" with 1-2% diss py.
- 127.3-158.4 Intermediate - Mafic Tuff - pale green-grey, m.g., bedding/foliation @ 70 degs.,
trace - 1% f.g. diss py. several scattered q.v. to 1".
152.4-157.3 - Siliceous Intrusive - buff-grey, mostly v.f.g. with central core
of more porphyritic material. tr-1% f.g. diss py. U/LC sharp @ 70 degs.
- 158.4-172.7 Mafic Tuff - dark green-grey, c.g., bedding/foliation @ 70 degs.
168.6-169.0 - blue-grey q.v. with 5% py.
- 172.7-197.0 Intermediate Tuff - pale green-grey, hard, indistinct banding @ 70 degs.,
trace - 1% f.g. diss. py.
- 197.0-203.0 Lean Iron Formation - dark green-grey, thin bedded @ 70 degs., 2-5% f.g.
magnetite peppered through beds to 2" in upper 2'. Lower section contains 3-5%
f.g. diss py in f.g. grey hard tuff with weak sericite alteration.
- 203.0-228.5 Felsic - Intermediate Tuff - pale grey, hard, f.g. few scattered dark grey
(argillite?) beds to 1-2'. trace - 1% f.g. diss py, heavier along contacts of
q.v. to 1/2".
221.0-228.5 - Aplite Dyke - pink-red, porphyritic in parts, trace - 1% f.g. diss
py, U/LC @ 30 degs.

SC-88-2

- 228.5-232.0 Lean Iron Formation - blue grey q.v. to 1" interbedded with dark green f.g. magnetite bearing beds. Intense folding in lower section. 3% py as cubes to 1/4".
- 232.0-285.0 Felsic - Intermediate Tuff - light green-grey, hard f.g., indistinct banding @ 70° trace - 1% f.g. diss py.
267.2-269.0 - Q.F.P. - Pale grey-green, c.g., 1-2% f.g. diss py, U/LC sharp @ 70 degs.
272.5-282.3 - Q.F.P. - 3" q.v. with 3-5% py at LC @ 70 degs.
- 285.0-313.0 Lean Iron Formation - poorly bedded, dusty green, siliceous beds to 1/2" @ 80 degs. 3-5% magnetite, 5-8% diss. py.
286.6-304.7 - Q.F.P. dark grey, hard, phenocrysts to 1/4", trace to 1% f.g. diss py.
304.7-313.0 - mod-strong magnetics with - blue-grey cherty beds to 2", 10% magnetite 5-10% diss py., 1-2% chalcopyrite, strongly distorted in parts.
- 313.0-328.0 Cherty Sediments - light grey, hard, f.g., poorly bedded, 1-2% f.g. diss. py, partly argillitic.
317.6-318.8 - Mafic Intrusive - dark green, f.g. mod-strong magnetics, 5% pyrrhotite.
- 328.0-337.0 Iron Formation - mod-strongly distorted, well banded with siliceous beds to 1/2".
328.0-332.0 - Argillite/Iron Formation - dark grey, thin bedded, 5% magnetite, 5-10% f.g. diss. py.
- 337.0-353.0 Felsic - Intermediate Tuff - pale green-grey, f.g., hard, poorly bedded.
- 353.0-361.0 Aplite Dyke - pink, hard, f.g. uniform texture, trace - 1% f.g. diss py. UC @ 60 degs.
- 361.0 End of hole.

CORE SAMPLES

HOLE NO: SC-88-2

SAMPLE NUMBER	INTERVAL FROM - TO	SAMPLE LENGTH	ASSAY	
			PPB	OZ
M 71135	115.6 - 117.7		159	
36	117.7 - 118.5		181	
37	118.5 - 120.0		197	
38	91.0 - 93.5		234	
39	152.4 - 157.3		51	
40	167.6 - 170.0		183	
41	266.8 - 269.5		59	
42	269.5 - 272.5		100	
43	272.5 - 277.5		175	
44	277.5 - 281.7		101	
45	281.7 - 284.8		700	
46	284.8 - 286.6		161	
47	228.5 - 232.0		41	
48	304.5 - 309.0		581	
49	309.0 - 313.0		139	
50	313.0 - 317.6		51	
51	317.6 - 321.5		59	
52	321.5 - 324.0		53	
53	324.0 - 328.0		41	
54	328.0 - 332.0		25	
55	332.0 - 337.0		55	
56	197.0 - 203.0		19	

0+00

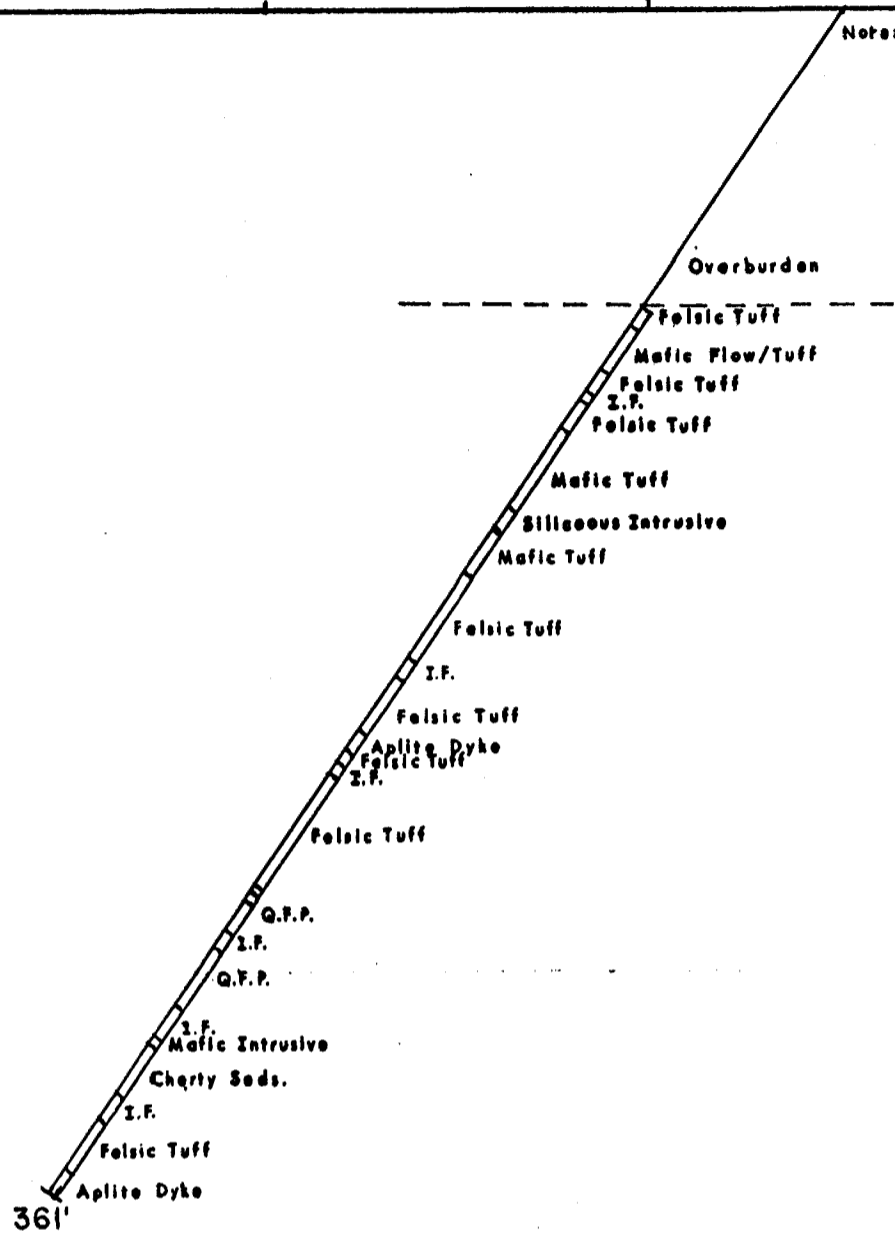
1+00N

2+00N

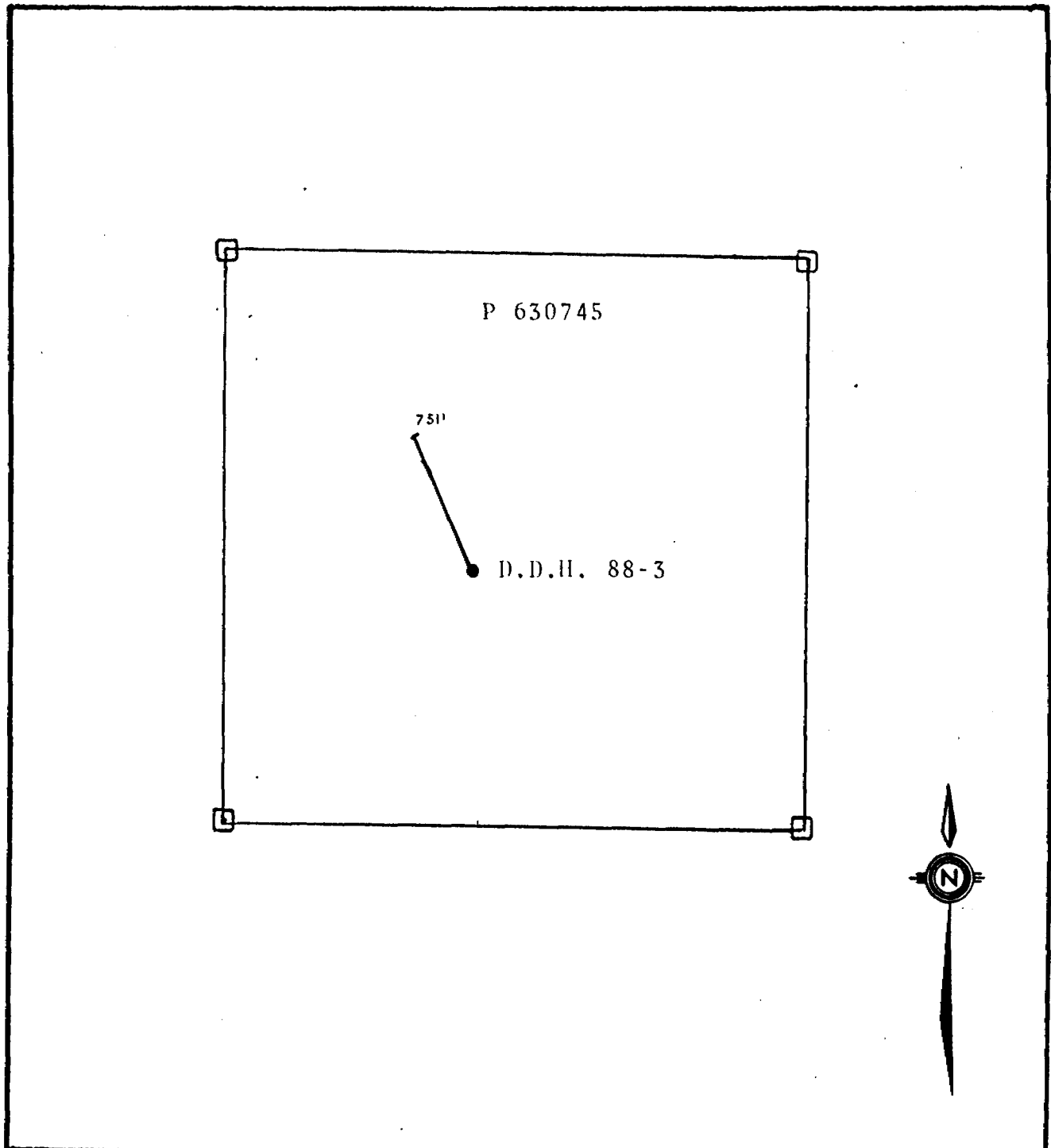
3+00N

4+00N

Note: Casing fell in sandy overburden



QUINTERRA RESOURCES INC. SYLVANITE CREEK PROPERTY D.D.H. 83-2 Section Looking West	
NO: 88-2	Log by: J.R. Goodwin
Location: L 14+00 E: 3+50 N	Date: 21/01/88
Asimuth: 245°	Depth: 361'
Dip: -55° casing fell	Claim: P 630746
Drawn by: J.R.G.	Scale: 1" = 50'
Date: 19/03/88	



	QUINTERRA RESOURCES INC.	
	SYLVANITE CREEK PROPERTY	
	D.D.H. 88-3 Location	
	Tooms Twp.	1" = 400'

John R. Goodwin, MSc
 Consulting Geologist

JUN 23 1988

DIAMOND DRILL LOG

PROJECT: SYLVANITE CREEK
COMPANY: QUINTERRA RESOURCES INC.
HOLE NO: SC-88-3
AZIMUTH: 335°
LOGGED BY: JOHN GOODWIN
John Goodwin
DRILLED BY: LONGYEAR

COST CODE: 1 M08 D
NTS 410/10
LOCATION: L16+50E/12+00N
DIP AT COLLAR: -45°
At 751' -48°
DATE: START - JAN. 23/88
FINISH - JAN. 25/88

LOG

- 0.0-41.0 OVERBURDEN
- 41.0-53.5 Ultramafic Tuff - dark grey, c.q., wormy to porphyritic texture, moderate talc alteration, numerous streaks quartz-carbonate to 1/2" weak-mod foliated @ 30 degs.
- 53.5-81.0 Diorite - pale grey-green, uniform salt/pepper texture to 1/8", mod. hard, foliation 30-45 degs. 57.0-8" earthy green intrusive dyke, LC @ 90 degs. 74.3-4" earthy green intrusive dyke, and green carbonate, contacts @ 30 degs.
- 81.0-110.6 Ultramafic Tuff - dark grey, coarse grained wormy/porphyritic texture, scattered irreg. q.v. from 1/2" to 2", becomes lighter grey and harder near bottom of the section, nil-trace py.
- 110.6-120.0 Mafic Tuff (Lapilli) green-grey, mod. hard, numerous felsic clasts to 3/8" stretched into wormy texture, several irreg. q.v. to 1" 1-3% f.g. diss. py.
- 120.0-123.3 Aplite Dyke - pink to red with hematite and minor magnetite, UC @ 25 degs., 1-2% f.g. diss magnetite.
120.0-121.0 - very irregular q.v. with minor green carbonate and fucshite 3-5% diss. f.g. py.
- 123.3-300.6 Intermediate - Mafic Tuff - pale green-grey, mod. hard, foliation @ 35 degs, trace py. Scattered interbedded lapilli beds to 12".
164.0-166.0 - graded bedding - fining down the hole.
173.0-186.5 - 8-10% irregular q.v. to 2", 1% f.g. diss. py.
195.0-205.0 - numerous irregular q.v. with minor hematite, some q.v. parallel to core axis, 1% diss. f.g. magnetite, weakly chloritic, 1% v.f.g. diss. py.
223.0-227.0 - Pillow structures/block tuff?
235.8-237.7 - Flow top? - very distorted, thin wisps and irregular q.v. to 1/2" LC sharp @ 30 degs.
237.7-246.2 - Felsic Tuff - light grey, hard 1-2% f.g. diss. py.
277.9-278.7 - white bull quartz - nil sulphides.
- 300.6-316.0 Felsic Tuff - light grey-green, hard.
300.6-304.0 - 10% py in cubes to 3/8"
304.0-309.6 - poorly bedded @ 45 degs, 1% f.g. diss. py.
309.6-316.0 - cherty sediments, 30% py in sections to 12", cubic py to 3/8" in bottom 4".

SC-88-3

- 316.0-325.0 Mafic Intrusive - dark green-black, mod hard, numerous porphyritic portions, becomes more talcose within 8' of contact. LC sharp @ 80 degs.
- 325.0-334.8 Mafic/Ultramafic Tuff - grey, mod. soft, numerous felsic patches/fragments to 1/2" in moderate green carbonate/talc alteration. 2-3% diss cubic py. banding/foliation @ 40 degs.
- 334.8-346.5 Mafic Tuff - grey-green, soft, mod talc alteration, narrow sections of massive green carbonate/chlorite/talc to 2-3".
335.2-336.0 - Felsic Intrusive - pale pink-grey, f.g. hard, uniform texture tr. py.
- 346.5-603.5 Ultramafic Tuff - light grey, soft, c.q. to porphyritic texture, abundant talc. banding/foliation @ 30-45 degs.
403.0-411.2 - Aplite/Syenite Intrusive - light grey-green, hard, nil-trace py.
408.5 - patches of green carbonate to 1"
423.0-425.5 - possible raft of mafic volcanics, U/LC are 2-3" massive green carbonate/chlorite.
460.7-462.4 - Q.F.P. pale pink-grey, phenos to 1/8" contacts are 4-5" massive green carbonate/chlorite, nil-trace py.
466.0-486.0 - Fault/Shear Zone - light grey, soft mush, abundant talc, no q.v. or py.
486.0-496.0 - foliation/shearing parallel to CA.
497.0-500.0 - Q.F.P. pink-grey, phenos to 1/8" 2" massive green carb./talc/chlorite along contacts, nil-trace py.
550-559.0 - becomes more greenish with distinct fuchsite/chlorite clots to 1/6", scattered patches diss. py.
559.0-564.0 - Q.F.P. - dark grey, hard, phenos to 1/8" 2-3% diss py. as cubes to 1/4", U/LC. sharp @ 30 degs.
564.0-603.5 - Silicified Ultramafic tuff - pale green, hard, chlorite clots to 1/16", nil-tr. py.
565.6-569.0 - Q.F.P. - waxy green-grey, f.g. hard, 1-2% f.g. diss. py. U/LC sharp @ 30 degs.
575.0-584.6 - Q.F.P. - waxy green-grey, f.g. indistinct phenos to 1/16", 2-3% f.g. diss. py. U/LC @ 40 degs.
592.0-603.5 - Q.F.P. pale grey, hard, phenos to 1/16", 2-3% diss. py. as cubes to 1/8" U/LC @ 30-35 degs.
- 603.5-696.2 Ultramafic Tuff, grey, mod soft, mod talc. alteration.
624.0-629.0 - Siliceous Int. - buff-grey, hard, f.g., 1% f.g. diss. py and patches 3/8" x 1" UC @ 30 degs.
632.0-637.0 - Fault Zone - Strongly fractured and sheared with heavy chlorite, nil-trace py.
653.2-657.2 - Siliceous Intrusive - buff-grey, hard, 1% f.g. diss. py., U/LC @ 40 degs.
- 696.2-721.6 Cherty Tuffaceous Sediments - buff to grey, thin cherty beds to 1/2" @ 30-35 degs. 2-3% magnetite in upper 2', 5-10% py. over 6" at lower contact.
700.6-712.5 - Siliceous Intrusive - light grey, hard, f.g. 1% f.g. diss py. U/LC @ 45 degs.
712.5-721.6 - 5% magnetite near contact, chert and tuff beds to 2" @ 30 degs., 10-20% f.g. diss. py. and patches to 1/2".

SC-88-3

721.6-724.8 Felsic - Intermediate Tuff - light grey-green, few cherty beds to 1/2" @ 45 degs.

724.8-751.0 Intermediate Tuff - green-grey, mod. hard, few coarse grained beds to 2', thin irregular q.v. to 1/4" oblique to parallel to CA.

751.0 End of hole.

CORE SAMPLES

HOLE NO: SC-88-3

SAMPLE NUMBER	INTERVAL FROM - TO	SAMPLE LENGTH	ASSAY	
			PPB	OZ
M 71157	110.6 - 115.0		27	
58	115.0 - 120.0		19	
59	120.0 - 123.3		73	
60	173.0 - 178.0		45	
61	178.0 - 182.0		57	
62	182.0 - 186.5		31	
63	195.0 - 200.0		107	
64	200.0 - 205.0		72	
65	237.6 - 242.5		101	
66	242.5 - 246.2		102	
67	300.6 - 304.0		93	
68	304.0 - 309.5		115	
69	309.0 - 313.0		193	
70	313.0 - 315.8		361	
71	325.0 - 330.0		239	
72	330.0 - 334.8		77	
73	559.0 - 564.0		91	
74	564.0 - 569.0		100	
75	569.0 - 575.0		75	
76	575.0 - 580.0		110	
77	580.0 - 584.6		187	
78	584.6 - 588.6		81	
79	588.6 - 592.0		119	
80	592.0 - 595.0		61	
81	595.0 - 599.0		130	
82	599.0 - 603.5		155	
83	624.0 - 629.0		117	
84	653.2 - 657.2		119	
85	696.2 - 700.6		225	
86	700.6 - 705.0		150	
87	705.0 - 708.0		121	
88	708.0 - 712.5		79	
89	712.5 - 717.0		163	
90	717.0 - 721.6		112	
91	721.6 - 724.8		65	

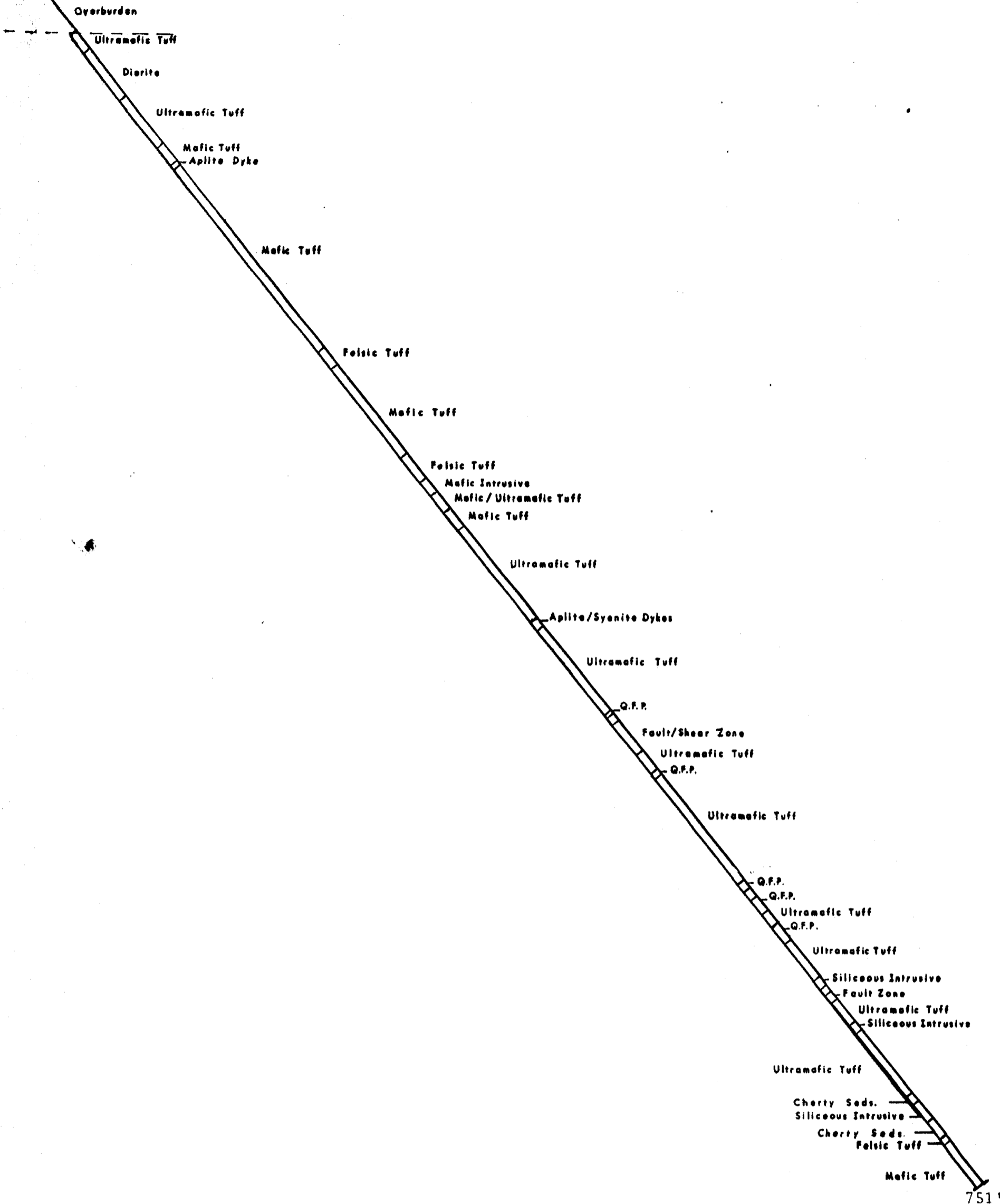
12+00N

13+00N

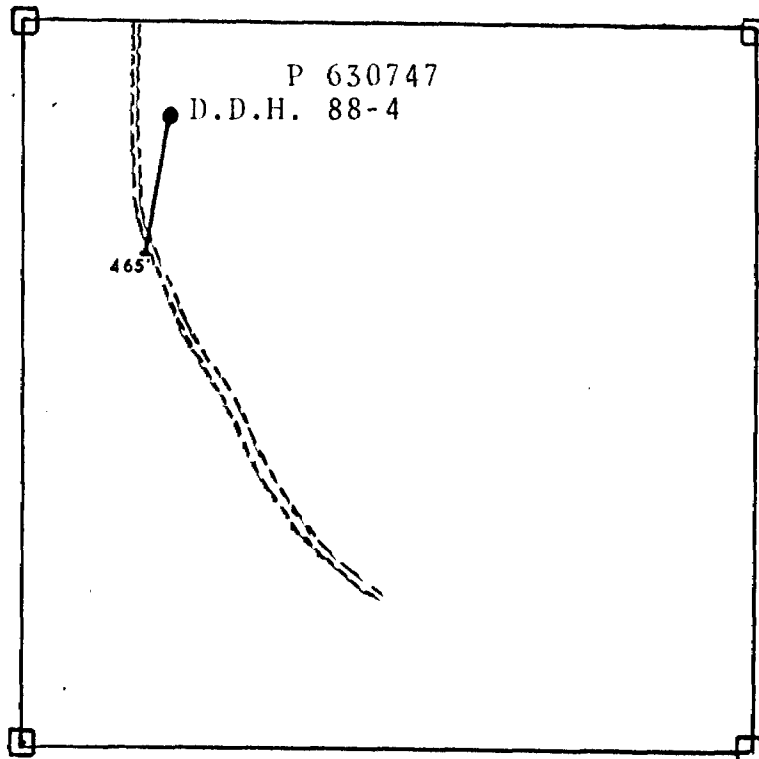
14+00N

15+00N

16+00N



QUINTERRA RESOURCES INC. SYLVANITE CREEK PROPERTY D.D.H. 88-3 Section Looking West			
NO: 88-3	Log by: J.R. Goodwin	Date: 23/01/98	
Location: L 16+50E; 12+00N			
Azimuth: 335°		Depth: 751'	
Dip: -50°		Claim: P 630745	
Drawn by: J.R.G.		Scale: 1" = 50'	
Date: 19/3/88			



	QUINTERRA RESOURCES INC.	
	SYLVANITE CREEK PROPERTY	
	D.D.H. 88-4 location	
	Tooms Twp.	1" = 400'

John R. Goodwin, MSc
Consulting Geologist

JAN 23 1988

RECEIVED

COST CODE NO. 1108

DIAMOND DRILL LOG

PROJECT: SYLVANITE CREEK
COMPANY: Quinterra Resources Inc
HOLE NO: SC-88-4
AZIMUTH: 190°
LOGGED BY: JOHN GOODWIN
DRILLED BY: LONGYEAR

NTS 410/10
LOCATION: L31+00E/6+75N
DIP AT COLLAR: -45°
At 465' -47°
DATE: START - JAN. 25/88
FINISH - JAN. 27/88

LOG

- 0.0 - 51.0 OVERBURDEN
- 51.0 - 89.0 Ultramafic Tuff - dark grey, porphyritic, few scattered thin irregular q.v. with minor py along contacts. Foliation @ 50 degs.
- 89.0 - 221.0 Mafic - Intermediate Tuff - pale green - grey, mod. hard, scattered section of fine and coarse grained material. Bedding @ 45 - 50 degs.
 - 99.6 - 108.0 - light green-grey, 5-10% q.v. material as patches and irregular seems to 2", 1-2% diss cubic py to 1/4" along contacts. Moderate green carbonate alteration.
 - 117.2 - 118.6 - Aplite Dyke - pink/red, f.g., trace - 1% f.g. diss. py.
 - 120.2 - 121.8 - Siliceous Intrusive - buff-grey, 2% f.g. diss. py.
 - 124.0 - 124.7 - Siliceous Intrusive - grey, 1% f.g. py
 - 123.0 - strongly distorted with 5% diss. py.
 - 128.5 - 131.3 - Siliceous Intrusive - grey, hard, 3% f.g. diss py, scattered q.v. patches and seems to 1/2" with diss cubic py to 1/4".
 - 132.0 - moderate green carbonate alteration. Banding/foliation @ 45 degs.
 - 151.0 - 154.0 - Intermediate Tuff - light grey-green.
 - 155.3 - 158.6 - " "
 - 166.0 - 167.0 - " "
 - 169.0 - 172.0 - " "
 - 174.0 - 176.6 - " "
 - 185.0 - 190.2 - Ultramafic Tuff - light grey, soft moderately distorted banding.
 - 190.2 - 196.4 - Mafic Tuff - dark green, mod. chloritic 1% c.g. diss py cubes to 1/4".
 - 196.4 - 199.5 - Lapilli Tuff - felsic frags to 1/4"x1", hard, very distorted.
 - 199.5 - 203.8 - Mafic Tuff - dark green, mod. chlorite, 2-3% diss cubic py to 1/4".
 - 208.0 - Tourmaline in q.v. to 1/2", trace py.
 - 203.8 - 213.0 - Intermediate Tuff - medium - coarse grain.
 - 213.0 - 217.6 - " " - 1-2% f.g. diss py, one q.v. to 2".
 - 217.6 - 221.0 - " " - medium-coarse grained, trace py.
- 221.0 - 227.5 Felsic Tuff - light grey, hard, some breccia fragments to 1"x2", mod. distorted, weakly magnetic over 1/2".

- 227.5 - 229.3 Mafic Tuff - dark green, mod. chloritic, 3-5% diss cubic py to 1/4". UC @ 50 degs.
- 229.3 - 230.6 Felsic Tuff - similar to 221.0 - 227.5. UC @ 60 degs.
- 230.6 - 242.0 Intermediate Tuff - coarse grained with shards to 1/4", bedding and contacts sharp @ 55 degs, trace - 1% f.g. diss py.
- 242.0 - 246.0 Mafic - Ultramafic Tuff - pale green-grey, weak-mod green carbonate, bedding/-foliation very distorted, 5% irreg. q.v., 2-3% diss py
- 246.0 - 261.0 Intermediate Tuff - light-green, mod. hard, bedding/foliation @ 70 degs.
- 261.0 - 289.5 Ultramafic Tuff - grey, c.g., well developed altered olivine? to 1/4" contacts chlorite rich.
- 289.5 - 304.6 Intermediate - Felsic Tuff - light grey-green.
289.5 - 295.5 - lighter buff, silicious sections to 2" with 2% f.g. diss py, numerous irreg. q.v. stringers to 1/8" bedding @ 45 degs.
- 304.6 - 312.7 Ultramafic Tuff - mod-strong green carbonate alteration, altered olivines to 3/8". 3' section of 50% quartz in veins to 2", 2% f.g. diss py
- 312.7 - 321.7 Felsic Tuff - light grey-green, hard, weak sericite, 1-2" q.v., 1-2% f.g. diss py.
- 321.7 - 325.6 Intermediate Tuff - light green-grey, hard.
- 325.6 - 331.0 Felsic Tuff - light grey-green, hard 1-9" q.v. with patches of py to 1/4", 1-2% f.g. diss and patches py to 1/4".
- 331.0 - 396.0 Intermediate - Mafic Tuff - interbedded f/cg mafic tuff with light grey felsic tuff units to 2'.
356.8 - 357.5 - q.v. with 1% cubic py to 1/4".
370.7 - 372.0 - q.v. - irregular broken contacts 5% diss py in 1" contact zone.
381.5 - 2" siliceous intrusive
385.4 - 386.2 - Siliceous Intrusive, nil py.
390.2 - 394.8 - Block tuff with irregular streaks/patches of blue-grey qtz to 1/2" to 5% nil-tracé py.
- 396.0 - 400.2 Felsic Tuff - pale grey-green, hard, cherty beds to 1", no magnetite, several beds to 2" with 10% py - overall 3-5% py. Bedding @ 70 degs.
- 400.2 - 408.0 Intermediate Tuff - similar to 331.0 - 396.0.

408.0 - 465.0 Ultramafic Tuff - pale grey, mod. soft. weak talc/green carbonate alteration
425.5 - 432.5 - numerous q.v. to 1/2" with diss py along contacts, 2-3% f.g.
py
440.5 - 445.0 - Siliceous Intrusive - pale waxy grey, 1% f.g. diss py.
440.5 - 441.2 - 30% diss cubic py to 1/4"
454.0 - 456.5 - Lamprophyre Dyke
457.5 - 460.0 - " "
462.5 - 464.8 - " "

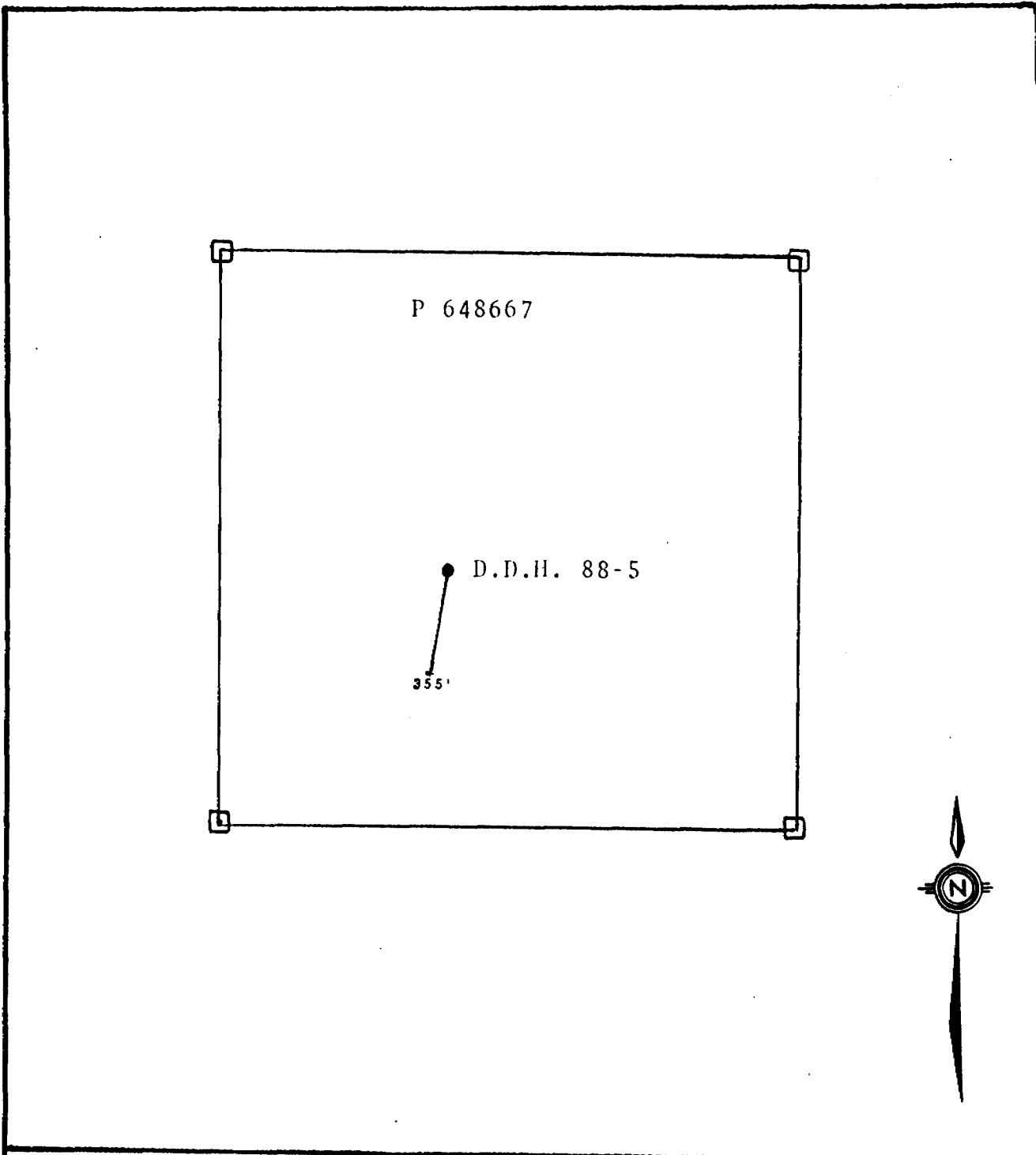
465.0 End of hole.

CORE SAMPLES

HOLE NO: SC-88-4

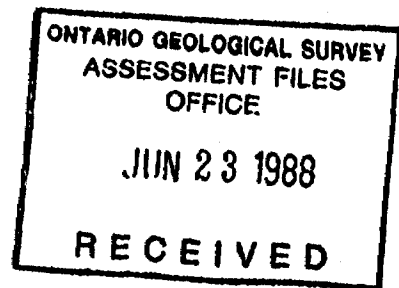
PAGE 3

SAMPLE NUMBER	INTERVAL FROM - TO	SAMPLE LENGTH	ASSAY	
			PPB	OZ
M 71192	99.0 - 104.0		239	
93	104.0 - 108.0		121	
94	114.6 - 120.2		91	
95	120.2 - 123.0		167	
96	123.0 - 128.0		125	
97	128.0 - 131.3		111	
98	131.3 - 137.0		49	
99	137.0 - 143.0		151	
71200	190.0 - 193.0		121	
72001	193.0 - 196.0		83	
02	199.0 - 204.0		180	
03	213.3 - 217.0		93	
04	221.0 - 224.4		195	
05	224.4 - 227.5		181	
06	227.5 - 229.3		175	
07	229.3 - 230.6		127	
08	240.0 - 246.0		97	
09	289.5 - 292.5		73	
10	292.5 - 295.2		45	
11	304.6 - 308.0		101	
12	308.0 - 312.7		121	
13	312.7 - 317.0		165	
14	317.0 - 321.7		133	
15	325.6 - 331.0		221	
16	356.6 - 358.0		175	
17	370.5 - 372.2		161	
18	396.0 - 400.0		140	
19	425.0 - 429.0		143	
20	429.0 - 432.5		133	
72021	440.0 - 445.0		165	



	QUINTERRA RESOURCES INC.	
	SYLVANITE CREEK PROPERTY	
	D.D.H. 88-5 Location	
	Tooms Twp.	1" = 400'

John R. Goodwin, MSc
 Consulting Geologist



DIAMOND DRILL LOG

PROJECT: Sylvanite Creek
COMPANY: Quinterra Resources Inc
HOLE NO: SC-88-5
AZIMUTH: 190 °
LOGGED BY: John Goodwin
DRILLED BY: Longyear

COST CODE NO.: 1408
NTS: 41 0/10
LOCATION: L28+00E/29+00N
DIP AT COLLAR: -45 °
At 355' -51°
DATE: Jan 27-Jan 28, 1988.

LOG

- 0.0 - 15.0 Overburden
- 15.0 - 22.3 Intermediate Tuff, pale grey-green, med-c.g. bedding/foliation @ 70 degrees, few thin scattered qtz veins to 1/2", lower 2' mod. chloritic.
- 22.3 - 29.0 Lamprophyre Dyke - c.g. dull grey-brown, 1-2% f.g. diss. py. UC sharp @ 45 degrees, LC @ 90 degrees.
- 29.0 - 35.8 Intermediate Tuff - as above from 15.0-22.3.
- 35.8 - 45.0 Cherty Sediments - light grey, hard, f.g. bedding @ 80 degrees, sections to 1" of semi-massive py (80%), average 10-15%.
41.0 - 43.0 - thin bedded argillite with 10-20%py.
- 45.0 - 70.0 Intermediate - Felsic Tuff - light grey, hard, f.g., thin bedded @ 80 degrees, scattered q.v. to 1"
58.5 - 59.5 shear zone.
- 70.0 - 211.0 Intermediate - Mafic Tuff - dark grey-green, mod hard, f-c.g. 1-2% pervasive magnetite with local thin beds to 5% magnetite.
- 94.6 - 96.0 2" broken q.v. parallel to CA. 10% py.
102.0 - 110.0 becomes thin bedded @ 80 degrees
123.0 - becomes f.g with 2-3% py.
124.0 - 2" bed of 50% py
130.0 - 6" q.v.
135.0 - 3" q.v.
137.0 - 2" q.v. with 30% py.
142.0 - 6" QFP, dark grey, phenos to 1/4 ", 20-30 degrees/CA
148.0 - 203.0 f-mg, 1% f.g. diss py with local patches/seams to 1" with 3-5% py, scattered q.v. to 1/2 " with minor py.
187.5-2" q.v.
190.2 - 190.6-30 % py

SC-88-5

- 211.0 - 285.6 Intermediate - Felsic Tuff - light grey, f.g. hard, cherty sedimentary beds to 1" @ 80 degrees, 2-3% f,g, diss py.
- 220.0 - 2" and 8" q.v.
- 225.2 - 227.0 - 9" and 12" q.v., 3-5% py
- 228.5 - 2" irreg. q.v. with 3% py.
- 233.0 - 241.2 QFP - pale buff-grey, hard, phenos to 1/4", 2-4% f.g. diss py., UC @ 70 degrees, LC @ 45 degrees
- 241.2 - 251.0 - 5% q.v to 1" with 5% f.g diss py.- rock becomes pervasively magnetic to 350.0
- 251.0 - 265.0 - 1% f.g diss py with scattered patches/streaks of 3% py., becomes stronger magnetic.
- 275.3 - 285.6 - Lamprophyre Dyke - dark green, cg. strongly magnetic, 1% diss py, UC/LC @ 30 degrees.
- 285.6 - 299.0 Intermediate - Mafic Tuff - dark green-grey, c.g. mod hard. bedding/foliation @ 75-80 degrees, scattered q.v. to 1/2 " with py to 1/8"
- 299.0 - 306.0 Felsic - Intermediate Tuff - light green, hard, f.g., 3-5% f.g diss py.
301.3 - 302.5 - 3" q.v. with 30% py.
- 306.0 - 313.5 Mafic - Intermediate Tuff - dark green, cg. nil-tr py, magnetic
- 313.5 - 316.0 Felsic - Intermediate Tuff - light grey-green, hard.
314.6-315.6 - broken q.v. with 10% py and 1-2% cpy in patches to 1/2".
- 316.0 - 333.0 Mafic - Intermediate Tuff. dark green, bedding @ 70 degrees, nil-tr py.
- 333.0 - 336.5 Felsic - Intermediate Tuff 1% f.g. diss py with scattered irreg. q.v. to 3" with 2-3 % py.
- 336.5 - 355.0 Mafic - Intermediate Tuff - dark green, mod hard, nil-tr py.
353.5-1/2" blue-grey q.v. with 2% py.
350.0 - pervasive magnetite ends.
- 355.0 End of Hole

CORE SAMPLES

HOLE NO: SC-88-5

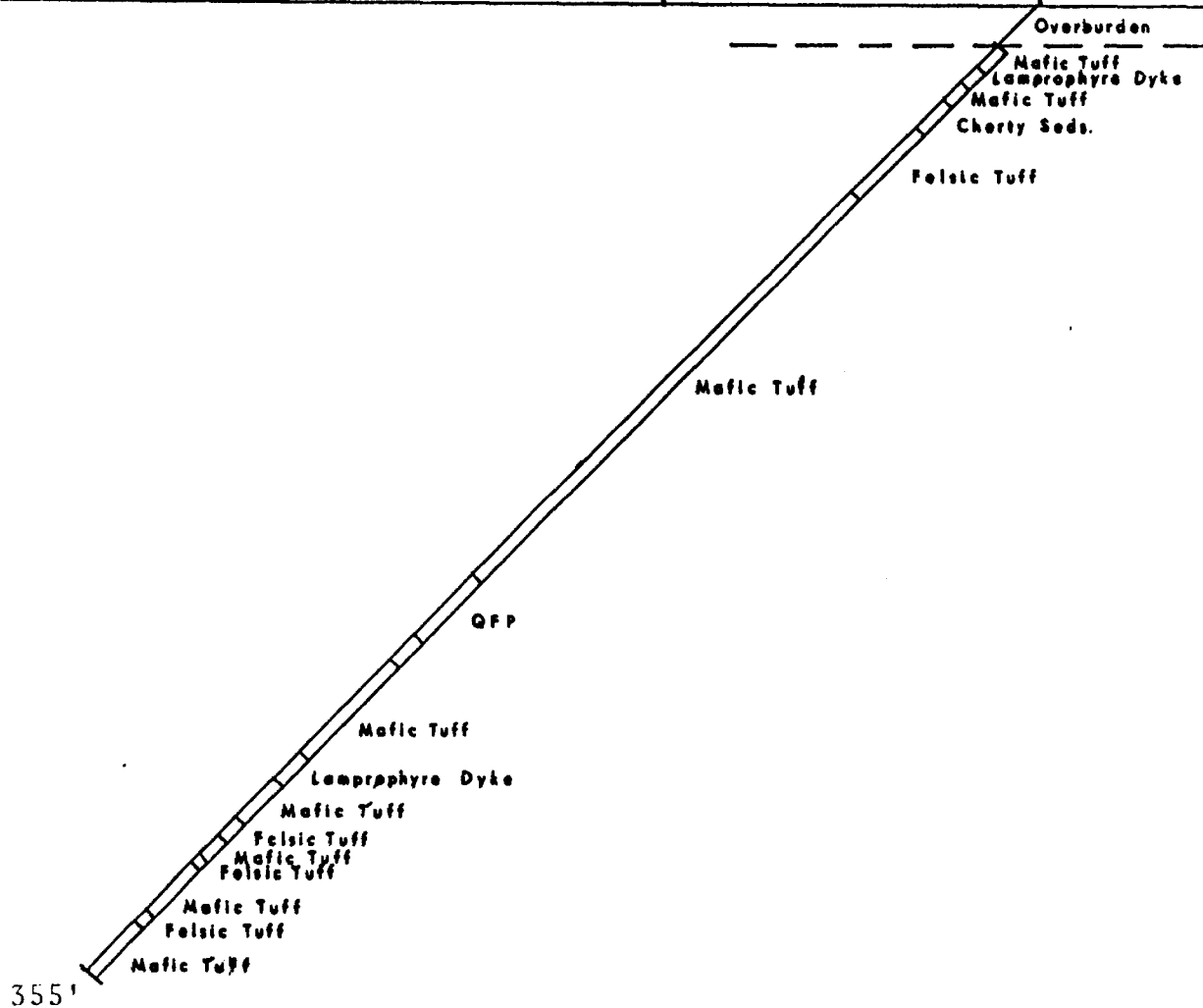
SAMPLE NUMBER	INTERVAL FROM - TO	SAMPLE LENGTH	ASSAY	
			PPB	OZ
72022	22.3 - 26.0		71	
23	26.0 - 29.0		87	
24	35.8 - 38.5		143	
25	38.5 - 41.0		179	
26	41.0 - 45.0		121	
27	85.0 - 90.0		157	
28	90.0 - 94.6		155	
29	94.6 - 100.0		131	
30	100.0 - 105.0		131	
31	105.9 - 110.0		171	
32	123.7 - 128.3		140	
33	128.3 - 132.4		167	
34	132.4 - 137.0		179	
35	148.0 - 153.4		155	
36	153.5 - 158.0		177	
37	158.0 - 163.0		159	
38	163.0 - 168.0		155	
39	168.0 - 173.0		160	
40	173.0 - 178.0		155	
41	178.0 - 183.0		133	
42	183.0 - 188.0		117	
43	188.0 - 193.0		103	
44	193.0 - 198.0		57	
45	198.0 - 203.0		91	
46	211.0 - 216.0		89	
47	216.0 - 221.0		81	
48	221.0 - 225.2		95	
49	225.2 - 227.0		113	
50	227.0 - 229.0		155	
51	229.0 - 233.0		71	
52	233.0 - 237.0		87	
53	237.0 - 241.2		219	
54	241.2 - 246.0		135	
55	246.0 - 251.0		43	
56	251.0 - 256.0		121	
57	256.0 - 260.0		105	
58	260.0 - 265.0		83	
59	299.0 - 303.0		75	
72060	303.0 - 306.0		49	
61	313.5 - 316.0		139	
62	333.0 - 336.5		52	

27+00 N

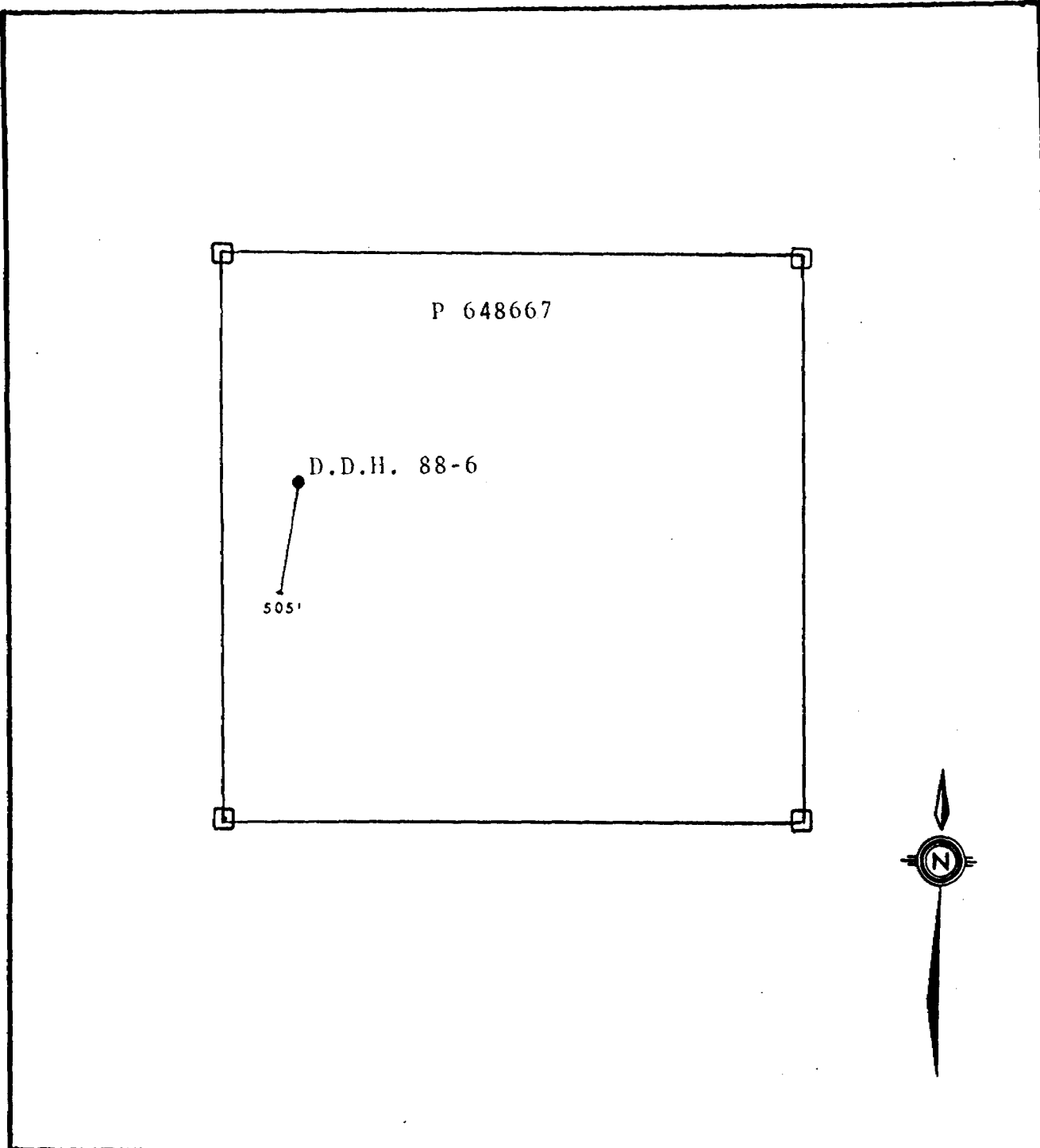
28+00 N

29+00 N

30+00 N



<p>QUINTERRA RESOURCES INC.</p> <p>SYLVANITE CREEK PROPERTY</p> <p>D.D.H. 88-5 Section</p> <p>Looking West</p>			
NO: 88-5	Log by: J.R. Goodwin	Date: 27/01/88	
Location: I, 28+00E; 29+00N			
Azimuth: 190°		Depth: 355'	
Dip: -45°		Claim: P648667	
Drawn by: J.R.G.		Scale: 1" = 50'	
Date: 19/3/88			



	QUINTERRA RESOURCES INC.	
	SYLVANITE CREEK PROPERTY	
	D.D.H. 88-6 Location	
	Tooms Twp.	1" = 400'

John R. Goodwin, MSc
 Consulting Geologist

JAN 23 1988

RECEIVED

DIAMOND DRILL LOG

PROJECT: Sylvanite Creek
COMPANY: Quinterra Resources Inc
HOLE NO: SC-88-6
AZIMUTH: 220 °
LOGGED BY: John Goodwin
John Goodwin
DRILLED BY: Longyear

COST CODE NO.: 1408
NTS 41 0/10

LOCATION: L24+00E/29+50N

DIP AT COLLAR: -45 °
At 505' -50°
DATE: Jan 28-Jan 31, 1988.

-
- 0.0 - 28.0 Overburden
- 28.0 - 430.0 Mafic - Intermediate Tuff - light to dark green-grey, mod hard, bedding/foliation @ 50-70 degrees.
- 44.0-49.0 very distorted, banding sub-parallel to /CA. some kink banding, scattered 1" q.v.
- 88.0-98.0 Diorite? dark green-grey, fg, uniform texture.
- 98.0-117.0 - 2% py in patches/cubes to 3/8", few q.v. to 1 1/2"
- 159.0-182.0-dark green grey, weakly magnetic, 1" beds/seams diss cubic py to 5-10% - average 2-3%
- 164.0 - becomes lighter grey, cg., scattered beds to 2" with 3-5% v.f.g. diss py.
- 174.5 - dark green-grey, several 2" beds with v.f.g. diss py to 10% - average 3-5%.
- 199.5-211.5 - 1-2% f.g diss py, scattered irreg q.v. to 1", banding @ 45 degrees.
- 214.5-222.8 - 10% q.v. to 2" with 1/4" patches/seams of 3-5% py
222.0-222.8 - 10%py.
- 236.0-237.5 strong sericite alteration, mod silicified, 1" band hematite rich material, 1% py.
- 255.0-258.0 lapilli tuff - beds to 3" with 10% f.g diss. py., numerous thin q.v. to 1/4"
- 258.0-267.0 - dark green-grey - scattered 1/2" beds diss. py totalling 2-3% py.
- 267.0-272.0 - Q.F.P. - light grey, phenos to 1/4", 1-2% f.g diss py. 1/4 " cubes py along upper contact @ 45 degrees.

272.0 - 273.0 - 5% diss py in thin beds

273.0-285.0 - interbedded fg/cg tuff, 1% py.
280.0-2" irreg. q.v. tr py.

285.0-300.5 - Dark green, hard, 2-3% py in scattered patches/seams to .
1/4" local zones to 5%, scattered irreg. q.v. to 1/4".

327.5-344.5 - Q.F.P - pale grey, phenos to 1/8", 1-2% f.g. diss py.
UC/LC @ 70 degrees.

344.5-347.0 - 3-5% f.g. diss py.

430.0 - 442.5 Mafic-Ultramafic intrusive - dark green c.g. altered olivine?
porphyroblasts to 1/4". non-magnetic.

442.5 - 444.6 Mafic - Intermediate Tuff-dark green-grey, hard.

444.6 - 449.0 Cherty Tuffaceous Sediments - dark grey-green, hard, broken cherty beds
to 2", no distinct magnetite throughout, mod. distorted with irreg.
q.v. to 1/4" and discontinuous qtz fragments 1/4" x 1". 5-10% f.g py as
cubes to 1/8" and irreg. patches to 1/4" x 1/2"

449.0 - 485.0 Intermediate Tuff - pale grey-green, hard, f.g. scattered q.v. to 1/2"
2% scattered cubic py to 1/8".

474.7-475.7 - irreg. q.v. with 2-3% cubic py along contacts. UC @ 25
degrees LC @ 90 degrees

485.0 - pervasive magnetite ends.

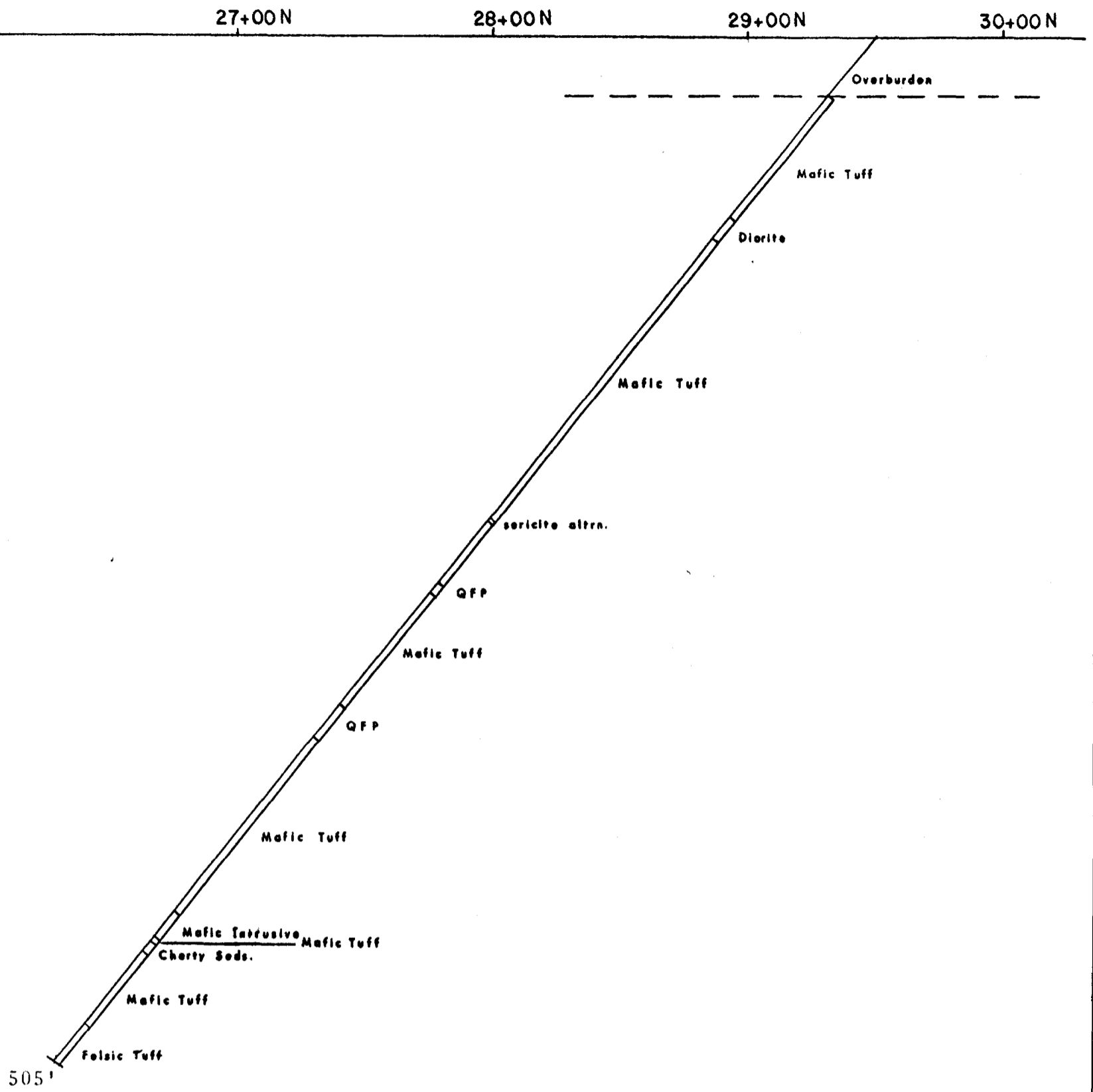
485.0 - 505.0 Felsic - Intermediate Tuff - light green-grey, fg, scattered q.v. to
1/4" with irreg. patches to 2" tr py.



505.0 End of Hole

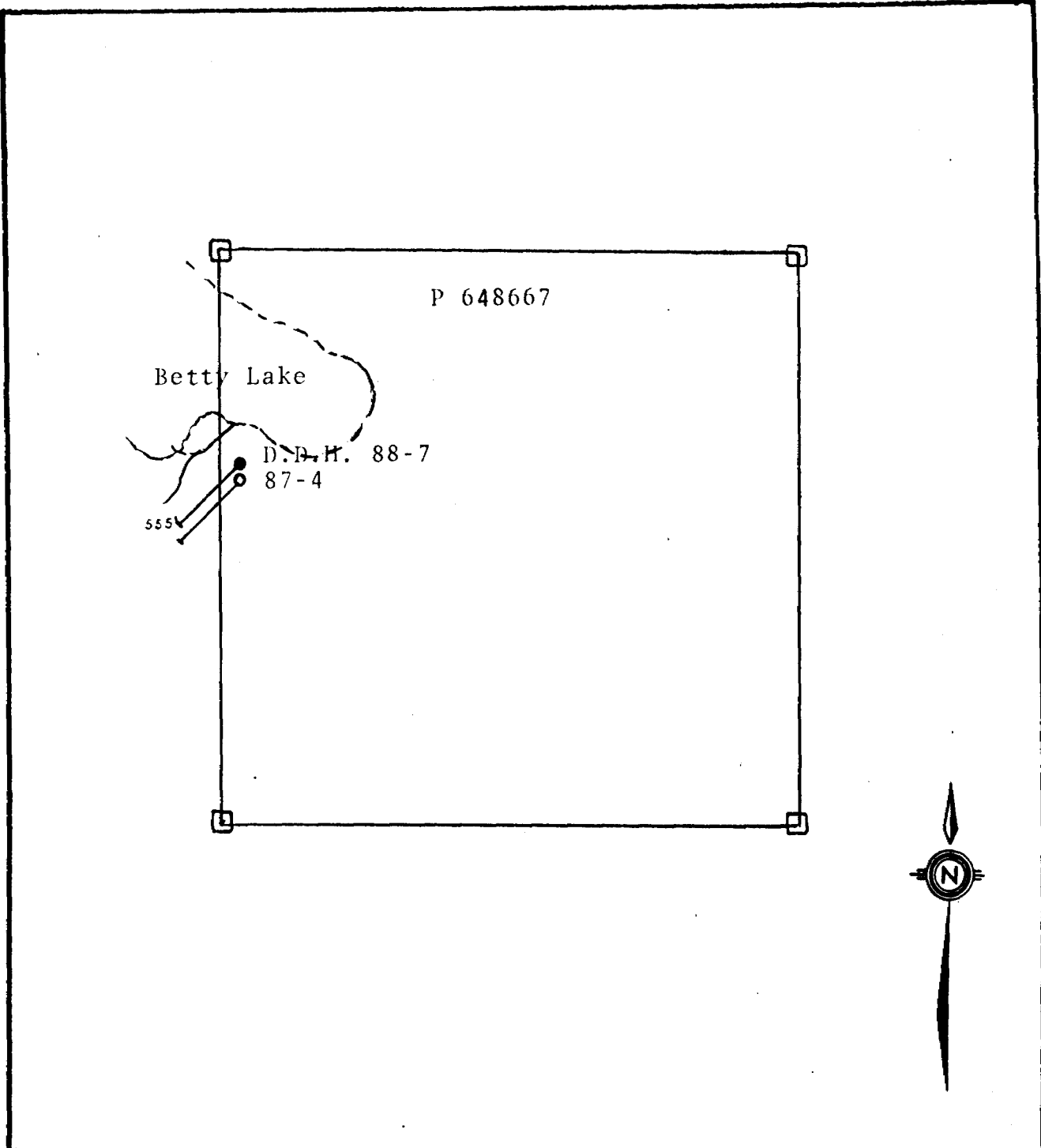
CORE SAMPLES

HOLE NO: SC-88-6

SAMPLE NUMBER	INTERVAL FROM - TO	SAMPLE LENGTH	ASSAY	
			PPB	OZ
72063	98.0 - 102.5		105	
64	102.5 - 197.0		59	
65	107.0 - 112.5		95	
66	112.5 - 117.0		97	
67	159.0 - 164.0		121	
68	164.0 - 168.0		55	
69	168.0 - 173.0		47	
70	173.0 - 178.0		61	
71	178.0 - 182.0		69	
72	199.5 - 203.2		71	
73	203.2 - 207.5		55	
74	207.5 - 211.5		73	
75	214.5 - 218.0		31	
76	218.0 - 222.8		50	
77	255.0 - 258.0		137	
78	258.0 - 263.0		41	
79	263.0 - 267.0		75	
80	267.0 - 270.0		83	
81	270.0 - 273.0		97	
82	285.0 - 288.7		61	
83	288.7 - 292.3		95	
84	292.3 - 296.8		81	
85	296.8 - 300.5		37	
86	327.5 - 331.0		57	
87	331.0 - 335.0		53	
88	335.0 - 340.0		41	
89	340.0 - 344.5		39	
90	344.5 - 347.0		51	
91	444.6 - 449.0		25	
92	449.0 - 453.5		61	
93	453.5 - 458.0		30	
94	458.0 - 464.0		41	
95	464.0 - 468.0		110	
96	474.7 - 475.7		105	



 		
QUINTERRA RESOURCES INC. SYLVANITE CREEK PROPERTY D.D.H. 88-6 Section Looking West		
NO: 88-6	Log by: J.R. Goodwin	Date: 28/01/88
Location: L 24+00E; 29+50 N		
Aximuth: 210°	Depth: 505'	
Dip: -50°	Claim: P 648667	
Drawn by: J.R.G.	Scale: 1" = 50' 50'	
Date: 19/3/88		



	QUINTERRA RESOURCES INC.	
	SYLVANITE CREEK PROPERTY	
	D.D.H. 88-7	
	Tooms Twp.	1" = 400'

John R. Goodwin, MSc
 Consulting Geologist

ONTARIO GEOLOGICAL SURVEY
ASSESSMENT FILES
OFFICE

JUN 23 1988

RECEIVED

COST CODE NO.: 1408

NTS 410/10

DIAMOND DRILL LOG

PROJECT: Sylvanite Creek
COMPANY: Quinterra Resources Inc
HOLE NO: SC-88-7
AZIMUTH: 225 °
LOGGED BY: John Goodwin
John Goodwin
DRILLED BY: Longyear

LOCATION: L22+00E/29+50N

DIP AT COLLAR: -45°

At 555' -43°

DATE: Jan 31-Feb 1, 1988.

0.0 - 50.0 Overburden

50.0 - 65.0 Gabbro - pale green-grey. cg, uniform texture, chlorite/hornblende clots to 1/8", numerous hairline to 1/4" irreg q.v. rimmed with hematite. LC @ 70, several q.v. to 1" with 1/4" patches of py.

65.0 - 73.8 Felsic - Intermediate Tuff - grey-green, cg
70.0 73.0 mod-strongly fractured, 2% f.g, diss. py.

73.8 - 106.6 Mafic Flow - dark green, f.g. uniform texture, pervasive magnetite, 1% f.g. diss py., thin q.v. to 1/4".

106.6 - 114.8 Felsic-Intermediate Tuff - light green-grey, mg, non-magnetic, bedding @ 70 degrees.

114.8 - 255.2 Mafic - Intermediate Tuff - dark green, f.g, hard, pervasive magnetite, 1% py

188.3-197.0 - mod. fractured with numerous q.v. to 1/4" with seams/patches py to 2-3%, bedding/foliations. @ 70-80 degrees

223.0 - 8" mod sheared sericite alteration zone. shearing @ 45 degrees.

247.5-255.2 - numerous q.v. to 2" - 1 at 6" mod distorted, 5% py.

255.2 - 275.5 Felsic - Intermediate Tuff - light green-grey, mod sericite alteration, thin bedded, 10% q.v to 4", 10% py, strong magnetite beds to 2" but does not appear to be I.F. lithology.

SC-88-7

275.5 - 289.0 Intermediate Tuff - pale green-grey, poorly bedded, magnetic, contacts gradational.

289.0 - 372.2 - Mafic Flow - dark green, hard, f.g., magnetic, tr - 1 % py, foliation @ 70 degrees.

317.5-318.5 - 2" q.v with 10% py.

355.0-365.0 - mod distorted, foliation @ 20 - 70 degrees numerous irreg. q.v. to 1/2 ", minor py.

366.0 - 372.2 - darker grey, 2-3% fg diss py as cubes/patches to 1/8", contact indistinct.

372.2 - 397.0 Intermediate - Tuff Flow - f.g. uniform texture, tr py

397.0 - 412.0 Mafic Tuff. dark green, mg., tr py

412.0 - 416.0 Felsic - Intermediate Tuff - dark grey, magnetic, 5% q.v. to 2", 3-5% cubic py, bedding @ 70 degrees.

416.0 - 438.0 Mafic Tuff - similar to 397.0-412.0

438.0 - 555.0 - Felsic - Intermediate Tuff - light green, hard, f.g., 1 % diss py.

486.3-492.5 - 5% blue-grey q.v. to 6" with 10% diss py along contacts.

555.0 End of hole.

CORE SAMPLES

HOLE NO: SC-88-7

SAMPLE NUMBER	INTERVAL FROM - TO	SAMPLE LENGTH	ASSAY	
			PPB	OZ
72097	188.3 - 193.0		115	
98	193.0 - 197.0		144	
99	247.5 - 251.0		159	
72100	251.0 - 256.0		151	
01	256.0 - 260.0		177	
02	260.0 - 265.0		141	
03	265.0 - 270.0		135	
04	270.0 - 275.5		130	
05	366.0 - 369.0		109	
06	369.0 - 372.2		101	
07	412.3 - 416.0		315	
08	486.3 - 492.5		137	

27+00N

28+00N

29+00N

30+00N

Overburden

Gabbro

Felsic Tuff

Mafic Flow

Felsic Tuff

Mafic Tuff

Felsic Tuff

Mafic Tuff

Mafic Flow

Mafic Tuff/Flow

Mafic Tuff

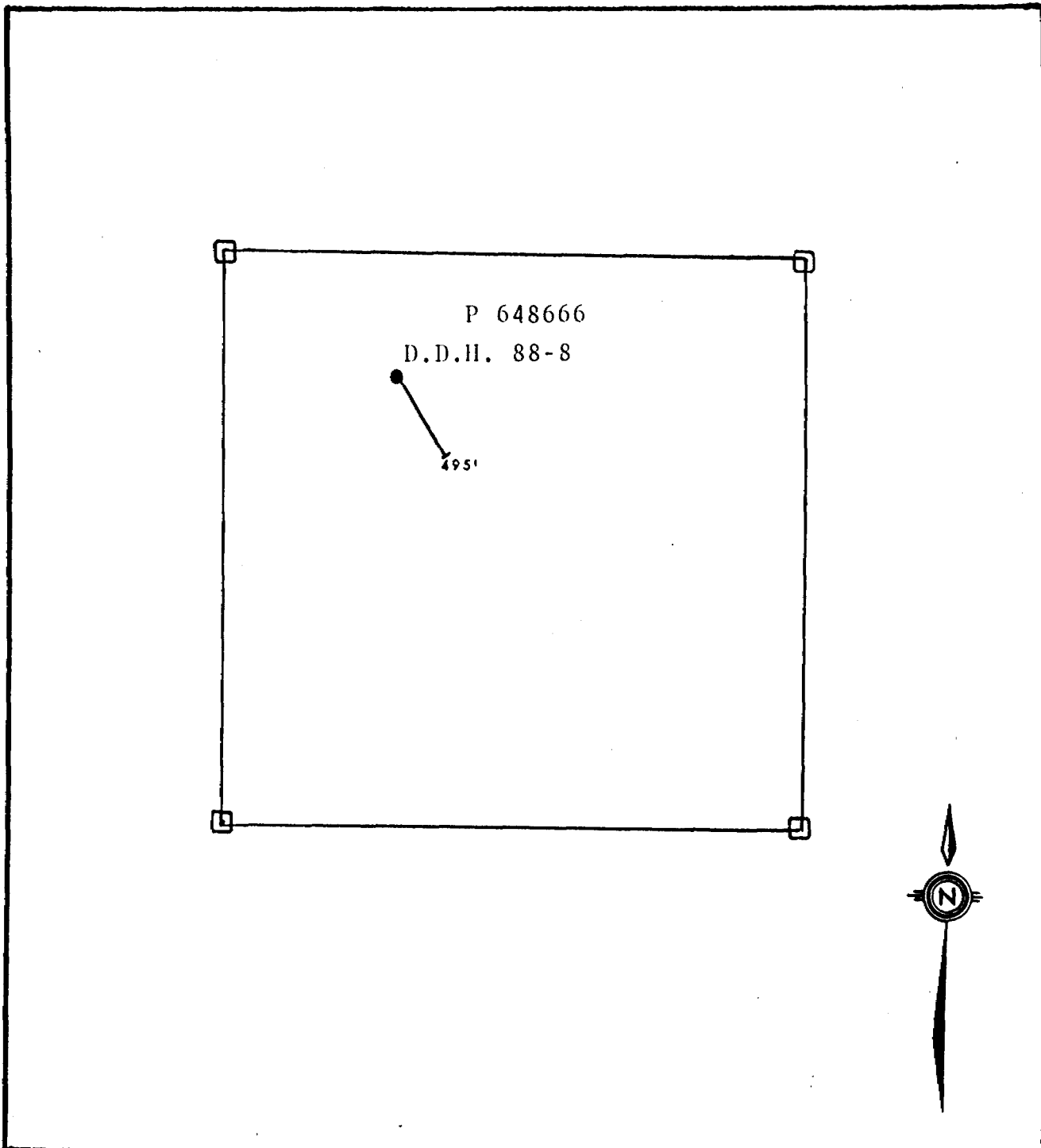
Felsic Tuff

Mafic Tuff

Felsic Tuff

550'

<i>northern</i> explorations inc.		<i>northern</i> explorations inc.	
QUINTERRA RESOURCES INC. SYLVANITE CREEK PROPERTY D.D.H. 88-7 Section Looking West			
NO: 88-7	Log by: J.R. Goodwin	Date: 5/01/88	
Location: L 22+00 E; 29+00 N			
Azimuth: 225°		Depth: 555'	
Dip: -45°		Claim: P 648667	
Drawn by: J.R.G.		Scale: 1" = 50'	
Date: 19/3/88			



	QUINTERRA RESOURCES INC.	
	SYLVANITE CREEK PROPERTY	
	D.D.H. 88-8 Location	
	Tooms Twp.	1" = 400'

John R. Goodwin, MSc
 Consulting Geologist

MIN 23 1988

RECEIVED

~~COST CODE NO. 1400~~

NTS 41 0/10

DIAMOND DRILL LOG

PROJECT: Sylvanite Creek
COMPANY: Quinterra Resources Inc
HOLE NO: SC-88-8
AZIMUTH: 150 °
LOGGED BY: John Goodwin
DRILLED BY: *John R. Goodwin*
Longyear

LOCATION: L12+00E/30+00N

DIP AT COLLAR: -45°

At 495' -49°

DATE: Feb 1, -Feb 3, 1988.

0.0 - 25.0 Overburden

25.0 - 185.0 Felsic - Intermediate Tuff. pale grey-green, hard, f-cg, bedding @ 50°, rare q.v. to 1", non-magnetic, few narrow lapilli sections.
99.0 - 102.0 Lamprophyre dyke, contacts @ 45°
134.5 - 138.0 Lamprophyre dyke, contacts @ 35°
139.5 - 141.5 Lapilli tuff, felsic frags to 1/2"
159.0 - 164.5 Lapilli tuff, felsic frags to 1/2"

185.0 - 205.0 Mafic Tuff - dark green-grey, m.g.,

205.5 - 224.2 Felsic - Intermediate Tuff pale green-grey, mod. hard,
205.5 - 217.0 Lapilli tuff
218.0 - 4" q.v.
219.8 - 221.2 Lapilli tuff

224.2 - 232.2 Gabbro - dark green, c.g., well developed amphiboles to 1/4", tr py, along contacts @ 90°

232.2 - 250.5 Ultramafic Tuff - grey, mod. soft, weak talc/green carbonate, tr. diss py, becomes f.g. in bottom 7"

250.5 - 279.5 Felsic-Intermediate Tuff - pale green-grey, mod hard, bedding/foliation @ 70°
258.4 - 259.0 Lamprophyre dyke - f.g. contacts @ 45°, magnetic
273.7 - 2" Lamprophyre dyke f.g. contacts @ 45°, magnetic
275.7 - 277.4 Lamprophyre dyke f.g. contacts @ 45°, magnetic

279.5 - 283.0 Mafic Tuff - pale green, mod. distorted

283.0 - 329.0 Intermediate - Felsic Tuff - similar to 250.5 -279.5

329.0 - 343.5 Ultramafic Tuff - grey, soft, mod/strong talc alteration fragments/phenocrysts to 1/4 " x 1/2", contacts @ 40°

SC-88-8 cont'd

- 343.5 - 353.0 Felsic Tuff - light grey, thin bedded @ 80°, weak sericite alteration, 2-5% q.v. to 1", 3-5% py as patches to 1/2", minor green carbonate.
- 353.0 - 420.2 Mafic Tuff - dark green-grey, c.g., ultramafic phases, tr py.
380.5 - 381.1 white q.v., chloritic contacts @ 80°, minor py.
406.5 - 409.0 Lapilli tuff.
- 420.2 - 432.0 Felsic Tuff - pink-grey, thin bedded @ 80°/CA 5% q.v. to 6", 3-5% py,
428.0 -12" Strong diss. magnetite
- 432.0 - 452.0 Mafic/Ultramafic Tuff - c.g. with distinct clasts/phenocrysts to 1/4" x 1/2", weak - mod talc alteration, bedding @ 45°/CA.
- 452.0 - 495.0 Mafic/Intermediate Flow - pale green-grey, c-cg. uniform texture, possibly an intrusive diorite/gabbro. few scattered thin q.v. to 1" with 1% fg. py.
486.0 - fracture with patches py to 1/4" x 1/2" foliation @ 45°
- 495.0 - End of Hole

CORE SAMPLES

HOLE
SC-88-8

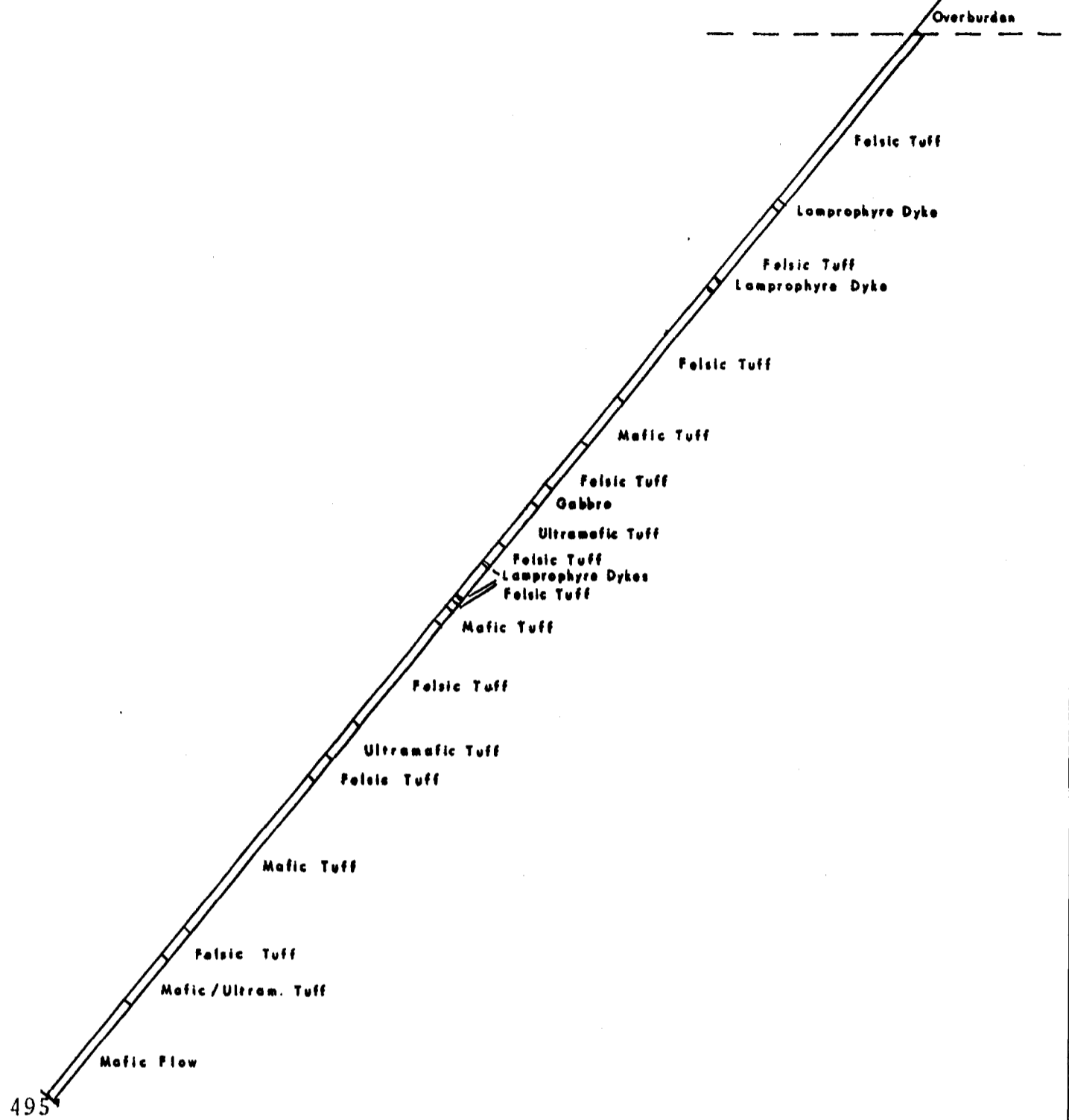
SAMPLE NUMBER	INTERVAL FROM - TO	SAMPLE LENGTH	ASSAY	
			PPB	OZ
72109	343.5 - 345.0		115	
110	345.0 - 348.0		139	
111	348.0 - 353.0		105	
112	420.0 - 424.5		91	
113	424.5 - 429.0		111	
114	429.0 - 432.0		107	

27+00N

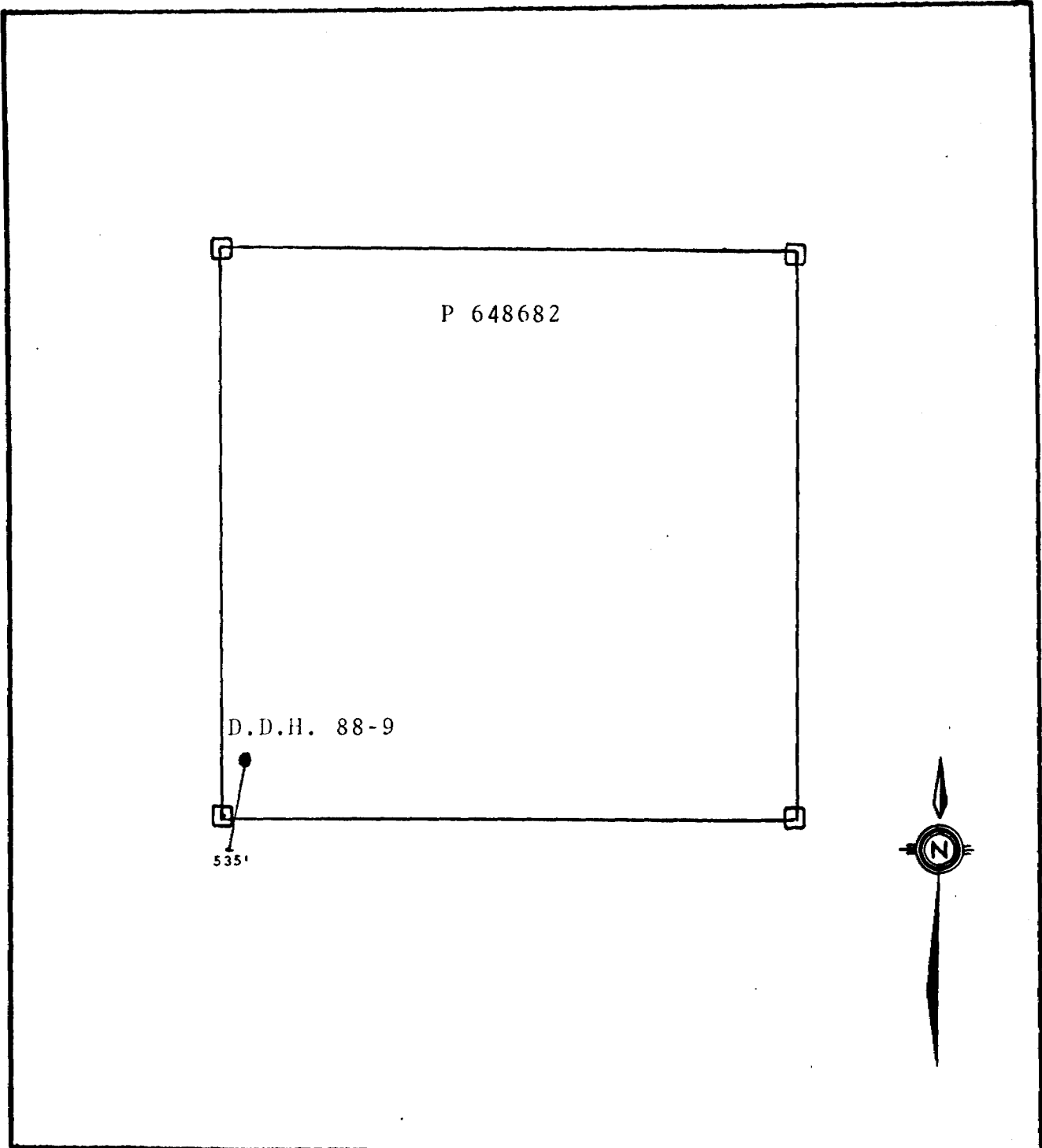
28+00N

29+00N

30+00N



QUINTERRA RESOURCES INC. SYLVANITE CREEK PROPERTY D.D.H. 88-8 Section Looking West			
NO: 88-8	Log by: J.R. Goodwin	Date: 1/02/88	
Location: L 12+00 E; 30+00 N			
Azimuth: 150°		Depth: 495'	
Dip: -45°		Claim: P 648666	
Drawn by: J.R.G.		Scale: 1"=50'	
Date: 19/3/88			



	QUINTERRA RESOURCES INC.	
	SYLVANITE CREEK PROPERTY	
	D.D.H. 88-9 Location	
	Tooms Twp.	1" = 400'

John R. Goodwin, MSc
 Consulting Geologist

JUN 23 1988

COST CODE NO. V E40B
NTS: 41 0/10

DIAMOND DRILL LOG

PROJECT: Sylvanite Creek
COMPANY: Quinterra Resources Inc
HOLE NO: SC-88-9
AZIMUTH: 190°
LOGGED BY: John Goodwin
DRILLED BY: Longyear

LOCATION: 4+00E/60+00N

DIP AT COLLAR: -45°
At 535' -41°
DATE: Feb 3, 1988
Finish Feb 5, 1988

LOG

- 0.0 - 111.0 Overburden
- 111.0-129.3 Mafic Tuff - pale green, soft, mod chlorite/talc alteration, banding/foliation @ 45°/CA, numerous thin irreg. patches/wedges qtz to 1/2", minor green carbonate, nil/tr py.
- 129.3-139.0 Intermediate Tuff - pale green, mostly thin bedded with several beds of mafic/ultramafic tuff to 2' 2-5% f.g. diss. py.
- 139.0-153.5 Mafic/Ultramafic Tuff - c.g. to wormy, soft, thin/coarse bedded, very distorted, patches qtz to 2", tr py.
- 153.5-154.8 Cherty Sediments with Lean Iron Formation - dark green, hard, reddish cherty beds to 1/2" with banded magnetite to 1/4", strongly magnetic in parts, very distorted, 10% cubic py to 1/4".
- 154.8-174.8 Mafic/Ultramafic Tuff - pale green, soft very distorted, patches/wedges qtz to 1".
159.0 - 168.0 - 20% white qtz veins to 4", minor py.
168.0 - 170.0 pale buff-grey siliceous intrusive, f.g. hard, 1% f.g. diss py, mod fractured.
171.0 - 173.8 - siliceous intrusive - similar to 168.0 - 170.0-1% f.g. cubic py to 1/8".
174.8 - 3" chlorite contact zone, 5% cubic py to 1/4".
- 174.8-186.6 Intermediate Tuff - pale green, thin bedded @ 45°, mod hard, LC - 4" chloritic zone with 3-5% py.
- 186.9-535.0 Ultramafic Tuff/Flow - green-grey, grey, weak/mod magnetic, banding/foliation @ 45°, tr - 1% diss. py. scattered zones of weak green carbonate alteration.
365.5 - 377.0 - non - magnetic - possible intrusive
439.0 - 447.5 - Lamprophyre Dyke
- 535.0 End of Hole.

CORE SAMPLES

HOLE NO: SC-88-9

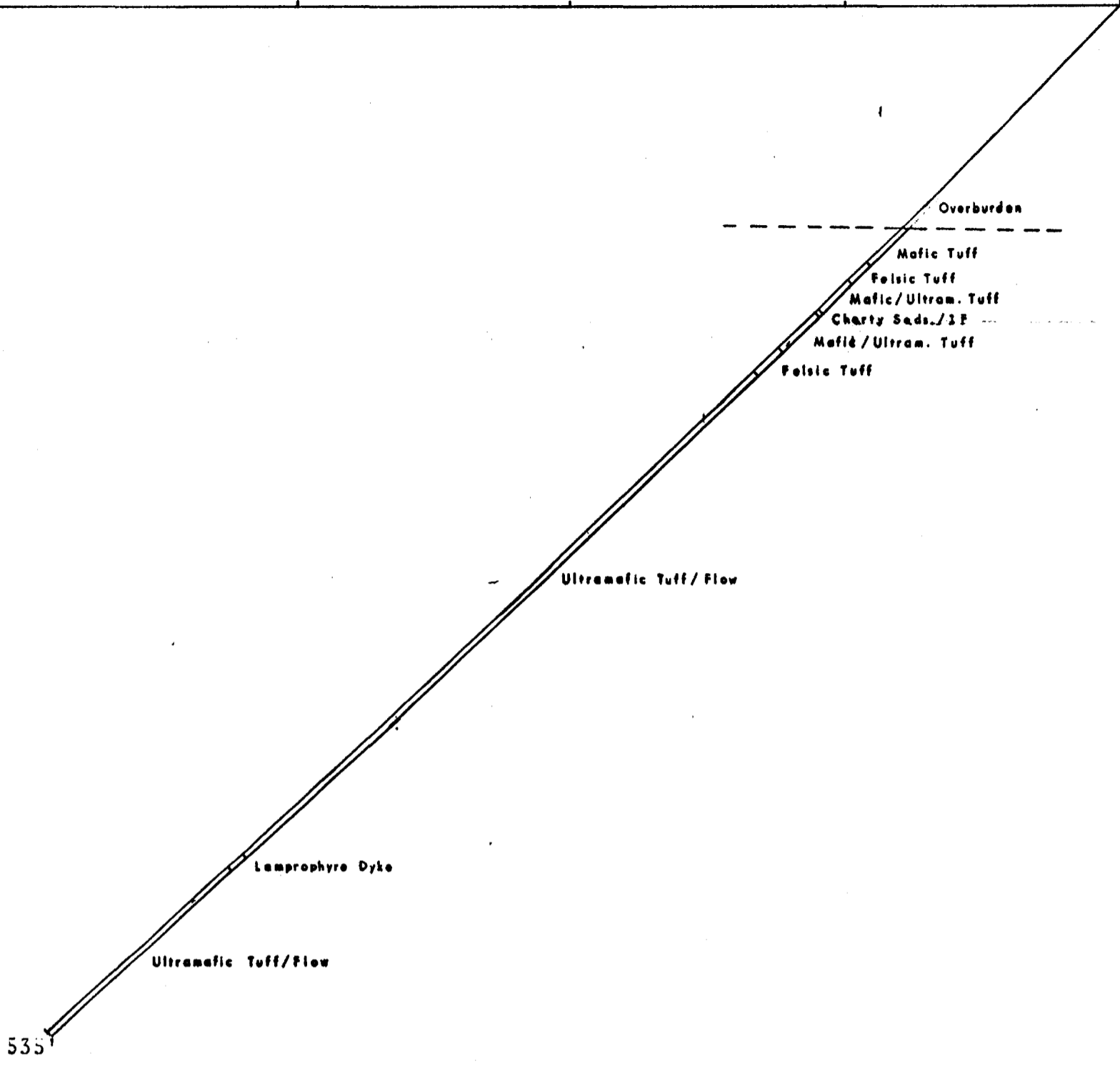
SAMPLE NUMBER	INTERVAL FROM - TO	SAMPLE LENGTH	ASSAY	
			PPB	OZ
72115	129.0 - 134.0		119	
116	134.8 - 139.0		161	
117	153.5 - 154.8		187	
118	159.0 - 163.5		133	
119	163.5 - 168.0		159	
120	168.0 - 170.0		197	
121	171.0 - 173.8		158	
122	173.8 - 176.0		153	
123	176.0 - 180.0		211	
124	180.0 - 184.5		193	
125	184.5 - 189.0		79	
126	194.0 - 198.0		35	

57+00N

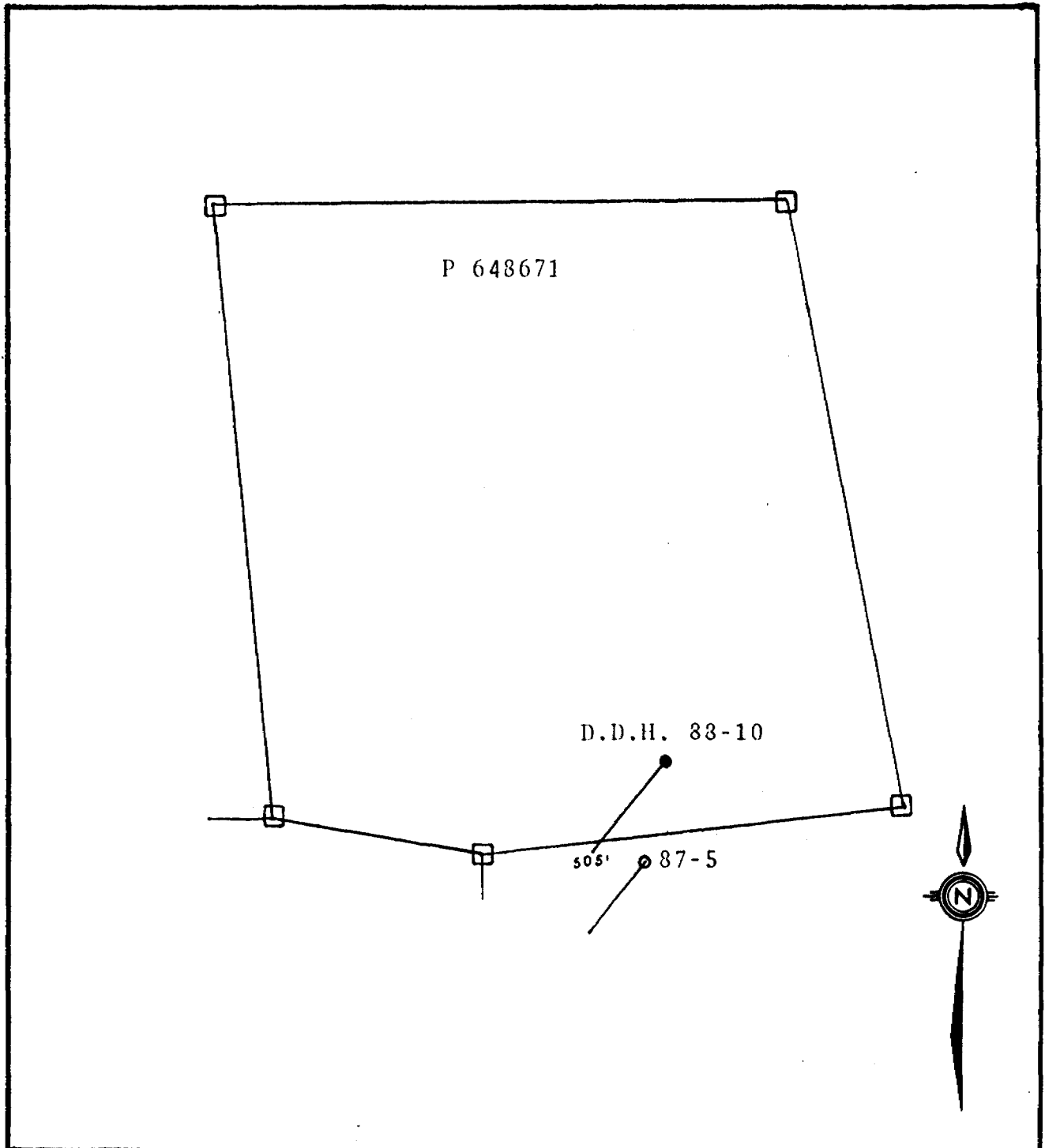
58+00N

59+00N

60+00N



QUINTERA RESOURCES INC. SYLVANITE CREEK PROPERTY D.D.H. 88-9 Section Looking West		
NO: 88-9	Log by: J.R. Goodwin	Date: 3/2/88
Location: L 4+00 E: 60+00 N	Asimuth: 190°	Depth: 535'
Dip: -15°	Claim: P 648692	Scale: 1" = 50'
Drawn by: J.R.G.	Date: 19/3/88	50'



	QUINTERRA RESOURCES INC.	
	SYLVANITE CREEK PROPERTY	
	D.D.H. 88-10 Location	
	Tooms Twp.	1" = 400'

John R. Goodwin, MSc
Consulting Geologist

MAR 23 1988

RECEIVED

DIAMOND DRILL LOG

PROJECT: Sylvanite Creek
 COMPANY: Quinterra Resources Inc
 HOLE NO: SC-88-10
 AZIMUTH: 220 °
 LOGGED BY: John Goodwin
 DRILLED BY: Longyear

COST CODE NO.: 1408
 NTS 41 0/10
 LOCATION: L86+00E/19+50N
 DIP AT COLLAR: -45°
 At 505' -46°
 DATE: Feb 1, -Feb 3, 1988.

0.0 - 93.0	Overburden
93.0 - 107.0	Mafic - Intermediate Tuff - green-grey, f-cg. banding/foiliation @ 80° 95.5 - 12" chlorite zone with 1/2" irregular mass py.
107.0 - 215.0	Ultramafic Tuff - grey, wormy, soft, 136.2 - 12" chlorite zone with 2% cubic py to 3/8" 140.0 - 149.0 Fault zone dark green, hard, strongly fractured @ 20-30°/CA
215.0 - 230.0	Cherty Sediments + Sulphides - pale green-grey, hard, thin bedded @ 40 - 60° /CA Scattered 2' beds of cherty seds to 1/2" with patches massive py to 2", scattered q.v. with 50% fg diss. py., mod distorted.
230.0 - 269.0	Mafic Intermediate Tuff - pale green-grey, m.g. thin bedded @ 80°.
269.0 - 281.0	Cherty Sediments Lean Iron Formation - pale grey-green, hard, 50% q.v. to 2' with cherty and magnetite beds to 1/2" with beds to 2" of mass. py, Ave 50% py, weak sericite.
281.0 - 312.0	Mafic - Ultramafic Tuff - grey, grey-green, interbedded soft wormy c.g. tuff.
312.0 - 339.0	Intermediate Tuff - pale green-grey 312.0 - 316.3 - 60% q.v. 30 - 40% py, minor sericite 316.3 - thin bedded, more sericite alteration 2-3% f.g. diss py.
339.0 - 353.0	Mafic Tuff - pale green, mod. soft, c.g. thin bedded @ 70°

SC-88-10 cont'd

- 353.0 - 372.2 Ultramafic Tuff - pale grey, soft, mod talc alteration.
- 372.2 - 388.5 Felsic-Intermediate Tuff. - pale green grey with thin bedded pink-white siliceous beds to 1/2", few scattered blue-grey cherty q.v. to 3/8". 1% f.g. diss magnetite, and pyrite, bedding/foliation @ 80°/CA
- 388.5 - 426.7 Mafic-Ultramafic Tuff- pale grey, mod. soft, abundant felsic frags to 1/4x1/2". scattered felsic interbeds to 6" becoming more common to bottom of section.
- 426.7 - 430.0 Felsic - Intermediate Tuff - pale green-grey, thin bedded @ 80°/CA, scattered q.v. to 1" with 2-3% diss py along contacts.
- 430.0 - 445.0 Mafic Intermediate Tuff,- pale green, c.g., scattered patches/smears q.c.v. to 1/2", weak-mod green carbonate alteration. 2-3% f.g. diss py.
440.0 - 6" pink feldspar rich bed.
- 445.0 - 448.0 Felsic - Intermediate Tuff - thin bedded pink/grey tuff @ 80°/CA, 2-3% f.g. diss py and patches to 1/4"
- 448.0 - 458.5 Mafic - Ultramafic Tuff - pale grey, mod. soft, felsic frags to 1/2", becomes thin bedded and more mafic tuff down the section.
- 458.5 - 462.0 Felsic - Intermediate Tuff - thin bedded pink/grey tuff, 1-2% f.g. diss py with few cubes to 1/8".
- 482.0 - 494.5 Felsic - Intermediate Tuff - thin bedded with pink feldspar rich interbeds to 1/2" mod. distorted in parts, 1-2 % f.g. diss py.
- 494.5 - 505.0 Ultramafic Tuff - grey, c.g. with felsic frags to 1/2".
- 505.0 End of Hole.

CORE SAMPLES

HOLE NO:SC-88-10

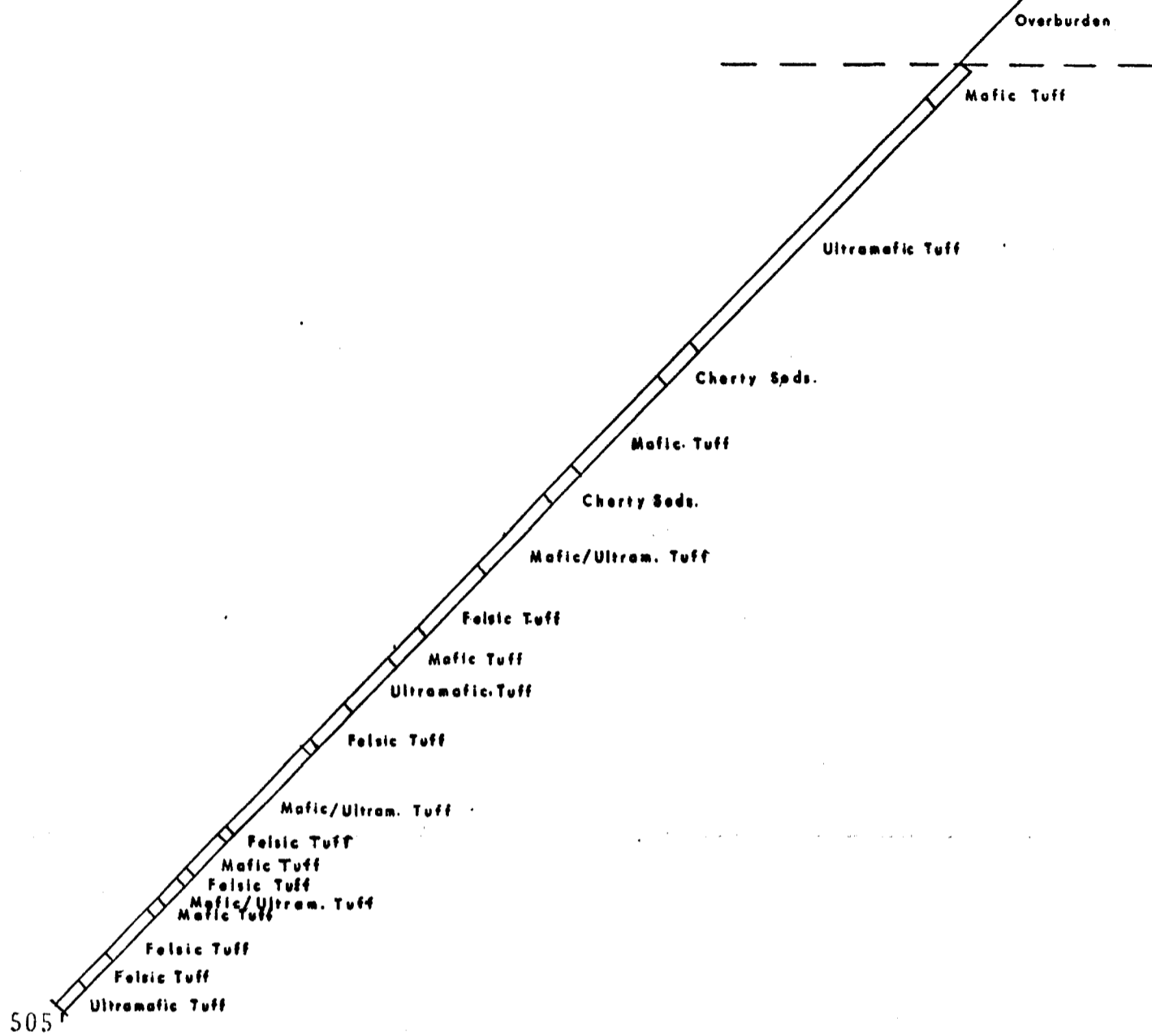
SAMPLE NUMBER	INTERVAL FROM - TO	SAMPLE LENGTH	ASSAY	
			PPB	OZ
72127	215.0 - 220.0		727	
128	220.0 - 225.0		765	
129	225.0 - 230.0		611	
130	269.0 - 274.0		953	
131	274.0 - 278.0		967	
132	278.0 - 281.0		405	
133	311.0 - 316.0		547	
134	316.0 - 321.0		290	
135	321.0 - 326.0		281	
136	326.0 - 330.0		103	
137	330.0 - 335.0		161	
138	335.0 - 339.0		182	
139	426.7 - 431.0		421	
140	431.0 - 436.0		167	
141	436.0 - 441.0		305	
142	441.0 - 445.0		311	
143	445.0 - 449.0		743	
144	457.7 - 462.0		267	

17+00N

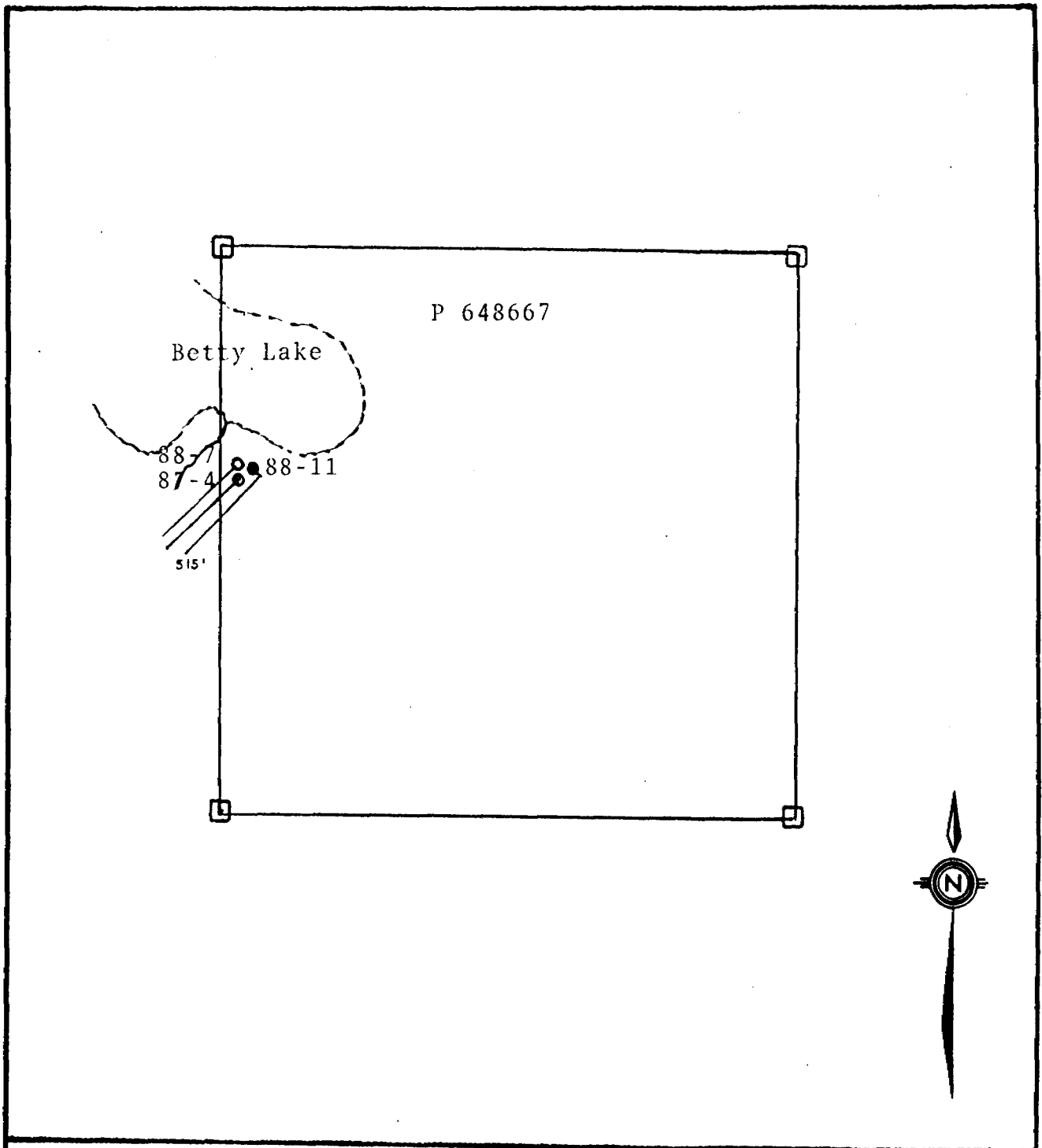
18+00N

19+00N

20+00N



QUINTERRA RESOURCES INC. SYLVANITE CREEK PROPERTY D.D.H. 88-10 Section Looking West		
NO: 88-10	Log by: J.R. Goodwin	Date: 5/02/88
Location: T 86+00 E: 19+50 N	Depth: 505'	
Asimuth: 220°	Claim: P 648671	
Dip: -45°	Scale: 1" = 50'	
Drawn by: J.R.G.		
Date: 19/03/88		



	QUINTERRA RESOURCES INC.	
	SYLVANITE CREEK PROPERTY	
	D.D.H. 88-11 Location	
	Tooms Twp.	1" = 400'

John R. Goodwin, MSc
Consulting Geologist

ONTARIO GEOLOGICAL SURVEY
 ASSESSMENT FILES
 OFFICE
 JUN 23 1988
 RECEIVED

DIAMOND DRILL LOG

PROJECT: Sylvanite Creek
 COMPANY: Quinterra Resources Inc
 HOLE NO: SC-88-11
 AZIMUTH: 220 °
 LOGGED BY: John Goodwin
 DRILLED BY: Longyear

COST CODE NO.: 1408
 NTS: 41 0/10
 LOCATION: L22+50E/28+50N
 DIP AT COLLAR: -45°
 At 515' -47°
 DATE: Feb 7, 1988.
 Finish Feb 9, 1988

LOG

- 0.0 - 15.0 Overburden
- 15.0 - 31.0 Intermediate Tuff, green-grey, f.g., weakly magnetic with 1% diss. magnetite, 3-5% f.g. diss py and cubes to 1/4", banding/foliation @ 45° - 70°/CA. few scattered q.v. to 1".
- 31.0 - 40.0 Intermediate - Mafic Flow - pale green, m.g. uniform texture 1% f.g. diss py.
- 40.0 - 55.3 Gabbro - dark green-grey, c.g. uniform texture with distinct amphiboles to 1/4", non magnetic. UC - several q.v. to 1" with cubic py to 3/8"/6" @ 80°.
- 55.3 - 82.5 Mafic - Intermediate Tuff - pale grey - green, thin bedded in parts @ 50°, 2-3% diss py with scattered cubes to 1/4" along q.v. to 1".
- 82.5 - 90.3 Gabbro - dark green - grey, c.g. similar to 40.0 - 55.3
- 90.3-120.0 Mafic - Intermediate Tuff. pale grey-green. thin bedded in part @ 80°, 2-3% diss py with scattered local beds to 5%, few q.v. to 1/2".
 113.0 - 3" q.v. with 10% diss py.
- 120.0-157.0 Mafic Flow - pale green - grey, uniform texture
 135.0 - 153.0 scattered dark green bands to 1/2" with 2-5% f.g. diss py - possible pillow selvages, scattered q.v. to 1-2".
- 157.0-169.0 Q.F.P.- light grey, phenocrysts to 1/4", 1% f.g. diss py.
- 169.0-176.3 Mafic Flow - similar to 120.0 - 157.0

SC-88-11 cont'd

- 176.3-195.0 Intermediate Flow/Tuff - pale grey-green, f-mg, weakly magnetic.
- 176.3-185.3 5-10% q.v. with 1" patches/seams py with semi-massive seams to 1/4". bedding @ 70°
192.5 - irreg stringers q.v. to 1/4" with 5% py.
- 195.0-198.5 Mafic Lapilli/Block Tuff - dark grey-green, felsic clasts to 1/2", 2-3% diss cubic py to 1/8", bedding @ 80°.
- 198.5-202.7 Mafic - Intermediate Tuff - pale green-grey, f.g. scattered beds/seams diss py with/without q.v., locally 10% py, average 2-3% py.
- 202.7-225.5 Mafic Flow - pale grey-green, f-mg, uniform texture, weakly magnetic, tr - 1% py.
- 225.5-231.4 Mafic Tuff - dark grey-green, mg, scattered broken q.v. to 3" with 10-20% py, 5% q.v. mod. distorted.
- 231.4-254.0 Mafic Flow - similar to 202.7 - 225.5.
- 254.0-255.5 Intermediate Tuff - m-cg. 5-10% py, UC sharp @ 80°.
- 255.5-271.8 Mafic Flow - similar to 202.7-225.5 scattered hairline fractures and q.v. to 1/2" with 2-3% c.g. py.
268.5 - 271.8- 3-5% q.v. as numerous hairline fractures and irreg, q.v. to 1/4" 10% py along contacts, LC has 50% py/6"
- 271.8-278.8 Q.F.P. - pale grey, c.g. with phenos to 1/4" 3-5% py as patches/seams. irreg. q.v. to 1" with 2-3% py sub-parallel/CA for 16" with 5% f.g. py. Contacts @ 45°.
- 278.8-321.0 Mafic Flow - similar to 202.7 - 225.5
- 321.0-324.0 Intermediate Tuff - pale grey-green, mod distorted with 20% q.v. to 3" with 10% py as cubes to 1/4".
- 324.0-371.5 Mafic Flow - similar to 202.7 - 225.5
- 371.3-377.8 Intermediate Tuff - pale green-grey, 1' section foliated parallel to CA., cherty beds to 1", 5% py.
- 377.8-392.4 Gabbro - pale green, c.g., amphiboles to 1/4" UC @ 70°.
- 392.4-458.4 Mafic Tuff/Flow. pale green-grey, uniform texture with several interbedded tuff beds to 2'
408.6 - 410.2 - bull q.v. with tr py
416.2 - 2" q.v.
426.3 - 435.5 - light green tuff bed with 5% q.v. to 3" with tr py.
435.5 - 438.8 - bull quartz vein, tr py @ 45°
444.5 - 445.6 - bull q.v., irreg. contacts @ 80°.

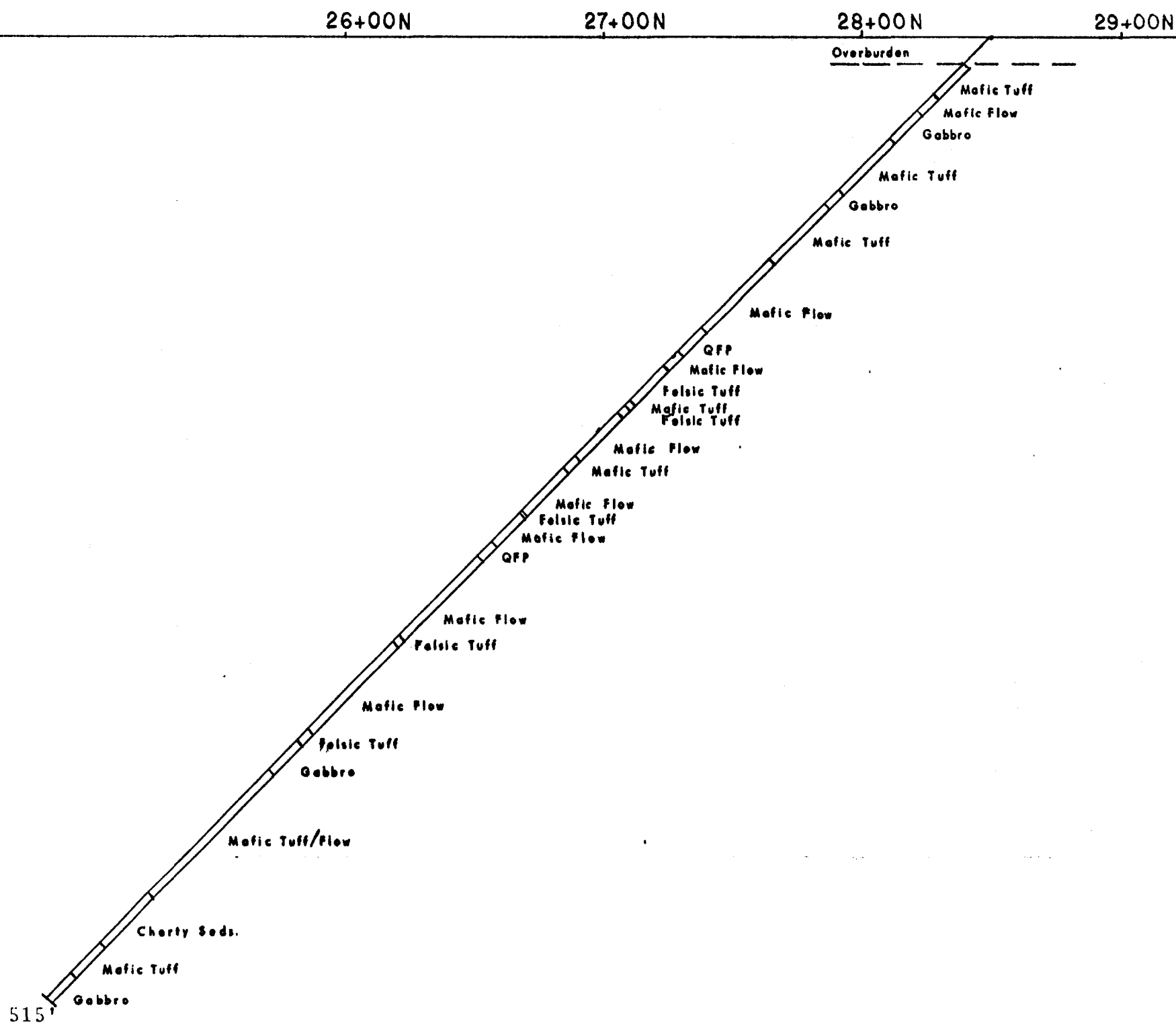
SC-88-11 cont'd



- 458.4-485.0 Intermediate Tuff - light green-grey, bedded @ 50-60°/CA
458.4 - 469.8 - cherty sediments - light grey, hard,
f.g., thin bedded, weak-mod sericite, 2-3% f.g. diss py and
beds to 1/4", few scattered irreg, cherty q.v. to 1/2" with
5% py.
482.0 - 485.0 - 3-5% f.g. diss py in beds to 1/4" @ 50°/CA.
- 485.0-501.7 Mafic - Intermediate Tuff - pale green, scattered
patches/cubes py to 1%, few q.v. to 2" with minor py along
contacts.
- 501.7-515.0 Gabbro - dark green-grey, c.g. uniform texture, amphiboles
to 1/8", scattered q.v. to 1" @ 45-90° tr py.
- 515.0 End of Hole.

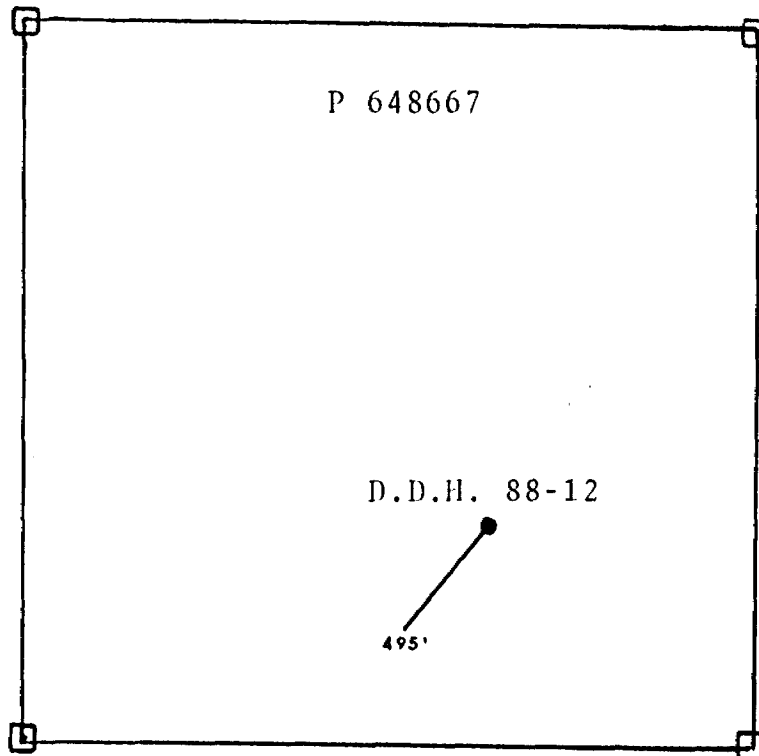
CORE SAMPLES

HOLE NO: SC-88-11

SAMPLE NUMBER	INTERVAL FROM - TO	SAMPLE LENGTH	ASSAY	
			PPB	OZ
72145	15.0 - 20.0		191	
146	20.0 - 25.0		361	
147	25.0 - 31.0		425	
148	55.3 - 60.0		307	
149	60.0 - 65.0		243	
150	65.0 - 70.0		193	
151	70.0 - 75.0		291	
152	75.0 - 79.0		275	
153	79.0 - 83.0		273	
154	90.0 - 94.0		207	
155	94.0 - 98.0		190	
156	98.0 - 103.0		263	
157	103.0 - 108.0		107	
158	108.0 - 113.0		95	
159	113.0 - 116.0		73	
160	116.0 - 120.0		35	
161	135.0 - 139.0		81	
162	139.0 - 144.0		75	
163	144.0 - 148.0		61	
164	148.0 - 153.0		37	
165	176.5 - 181.0		101	
166	181.0 - 185.3		63	
167	192.4 - 198.0		59	
168	198.0 - 202.5		83	
169	225.5 - 229.0		75	
170	229.0 - 232.0		31	
171	251.0 - 256.0		59	
172	268.5 - 272.0		305	
173	272.0 - 275.0		117	
174	275.0 - 279.0		141	
175	321.0 - 324.0		125	
176	372.0 - 374.5		53	
177	374.5 - 378.0		73	
178	408.5 - 410.5		41	
179	426.5 - 431.0		39	
180	431.0 - 435.5		63	
181	534.5 - 439.0		55	
182	444.5 - 446.0		47	
72183	458.5 - 462.0		111	
184	462.0 - 467.0		72	
185	467.0 - 470.0		87	
186	482.0 - 485.5		41	



 		
QUINTERRA RESOURCES INC. SYLVANITE CREEK PROPERTY D.D.H. 88-11 Section Looking West		
NO: 88-11	Log by: J.R. Goodwin	Date: 7/02/83
Location: L 22+50 E: 28+50 N	Depth: 515'	
Azimuth: 220°	Dip: -45°	Chain: P643667
Drawn by: J.R.G.	Scale: 1" = 50'	
Date: 19/03/38		



	QUINTERRA RESOURCES INC.	
	SYLVANITE CREEK PROPERTY	
	D.D.H. 88-12 Location	
	Tooms Twp.	1" = 400'

JUN 23 1988

RECEIVED

DIAMOND DRILL LOG

PROJECT: Sylvanite Creek
COMPANY: Quinterra Resources Inc
HOLE NO: SC-88-12
AZIMUTH: 220°
LOGGED BY: John Goodwin
John Goodwin
DRILLED BY: Longyear

COST CODE NO.: 1408
NTS: 41 0/10
LOCATION: L31+00E/27+00N
DIP AT COLLAR: -45°
At 495' -41°
DATE: Feb 9, 1988.
Finish Feb 12, 1988

LOG

0.0 - 40.0 Overburden

40.0 - 71.0 Gabbro - dark green-grey, mod. soft, well developed amphiboles to 1/4"

71.0 - 91.0 Mafic Cherty Intrusive - dark grey - black, very hard f.g. strongly magnetic
72.0 - 73.5 - 10" q.v. with 3" band of 50% py.

91.0 - 103.0 Felsic - Intermediate Flow - pale green, f.g. hard, uniform texture, few scattered q.v. to 2" with 2-5% cubic pyrite along contacts. LC indistinct.

103.0-148.5 Felsic - Intermediate Tuff-pale green-grey, f-mg, hard, bedding @ 70°, scattered q.v. to 1", magnetic
110.0 - 113.0 - 2" q.v. with 2-3% cu py to 1/8".
115.0 - 117.8 - 2" and 12" q.v. with 2-3% py to 1/8".

148.5-151.3 Cherty Sediments - light grey-green, hard, 5" q.v. with 2-3% py.

151.3-208.0 Felsic - Intermediate Tuff - similar to 103.0 - 148.5

208.0-214.0 Q.F.P. reddish grey, mg., phenos to 3/8", 2% patches/cubes of py to 1/8".

214.0-343.0 Felsic - Intermediate Tuff - pale green-grey, f-mg, bedding/foliation @ 70-80°, magnetic
214.0 - 3" q.v. with 50% f.g. diss py.
215.2 - 216.2 - bull quartz vein.
214.0 - 221.0 - 3-5% py as patches/cubes to 1/4".
scattered q.v. to 1" with 1-2% diss py., scattered patches py to 1/4" to 1%.
262.5 - 264.0 - 10% q.v. with 3-5% py, minor sericite
282.0 - 285.0 - 3% q.v. with sericite alteration, few cubes py to 3/8" to 3% py.
Scattered barren q.v. to 2", minor py along contacts,
banding/foliation @ 70-80°.

SC-88-12 cont'd

325.0 - 327.0 - 5-10% diss cubic py
330.0 - 332.5 q.v. to 3" with 3-5% cu py 3/8".

343.0-481.0 Felsic Tuff - light grey-green, f.g. hard, scattered q.v. to
2" with cubic py to 1/4". bedding/foliation @ 45°.
343.0 - 344.8 30 - 40% f.g. py in thin bedded cherty tuff

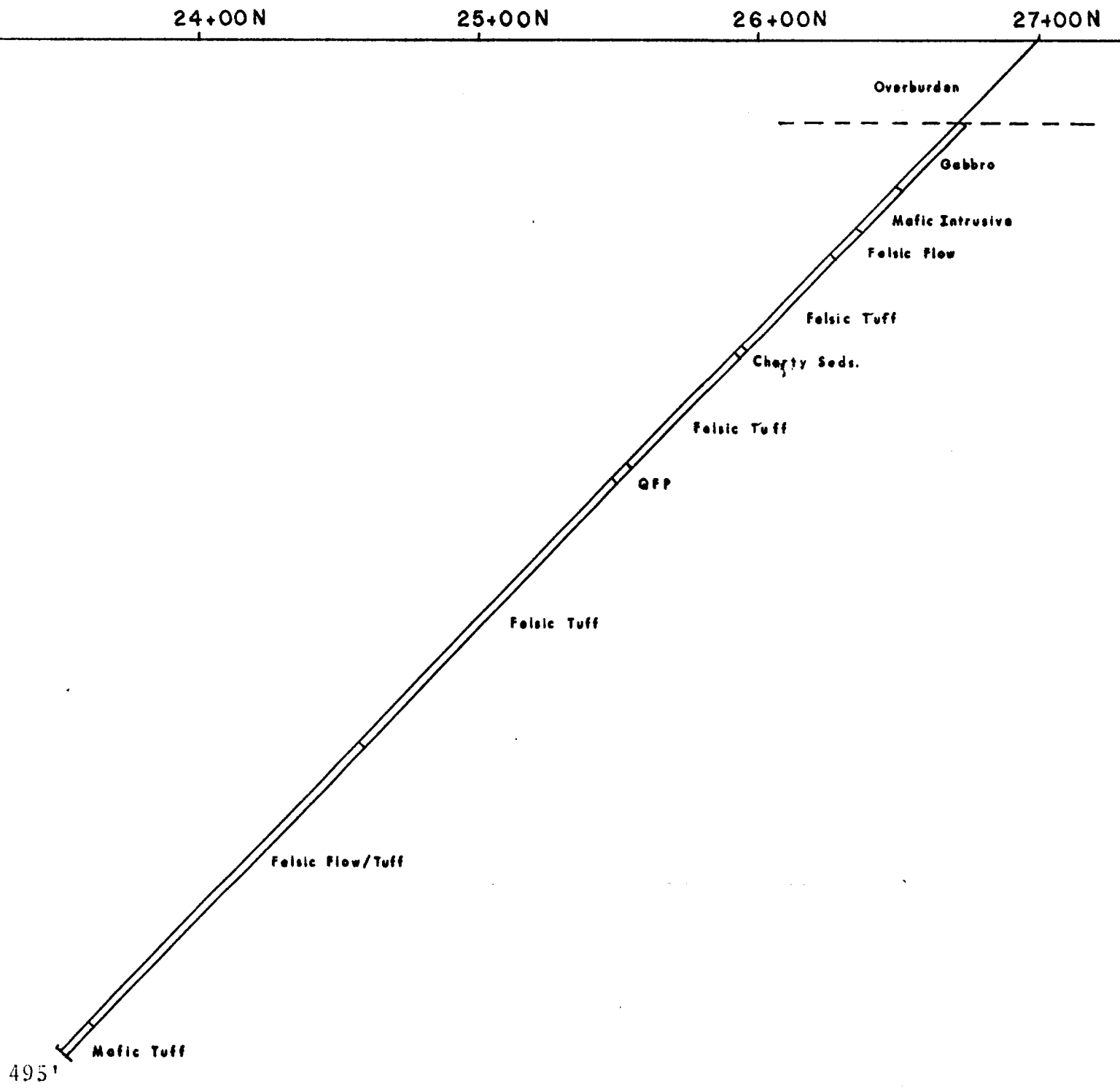
481.0-495.0 Felsic - Intermediate Tuff - pale green-grey, mod hard,
c.g., few q.v. to 2" with minor py + specularite + magnetite
rims.

495,0 End of Hole

CORE SAMPLES

HOLE NO: SC-88-12

SAMPLE NUMBER	INTERVAL FROM - TO	SAMPLE LENGTH	ASSAY	
			PPB	OZ
72187	72.0 - 73.5		103	
188	111.0 - 113.0		155	
189	148.0 - 113.0		213	
190	208.0 - 211.0		199	
191	262.5 - 264.0		267	
193	282.0 - 285.0		245	
194	330.0 - 332.5		174	
195	343.0 - 344.8		91	
196	211.0 - 214.0		119	
197	214.0 - 221.0		225	



NOVIMCO
exploration

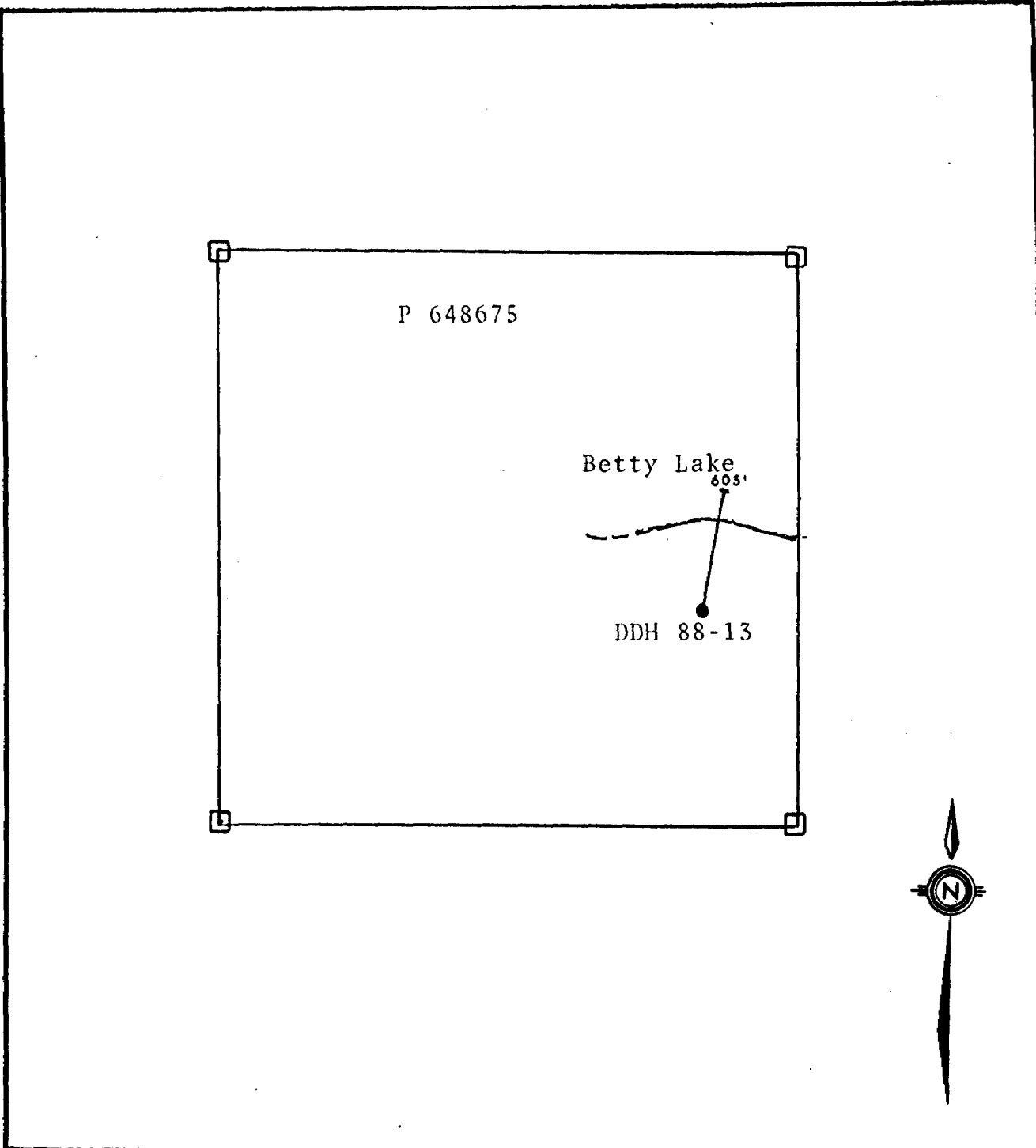


NOVIMCO INC.

QUINTERRA RESOURCES INC.
 SYLVANITE CREEK PROPERTY

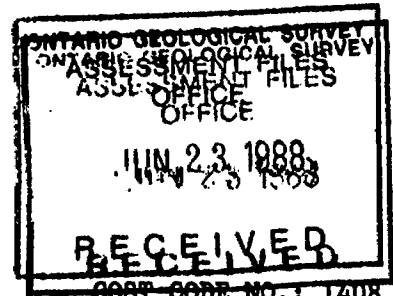
D.D.H. 88-12 Section
 Looking West

NO: 88-12	Log by: J.R. Goodwin	Date: 10/02/88
Location: L 31+00 E: 27+00 N		
Azimuth: 220°	Depth: 495'	
Dip: -45°	Claim: P 648667	
Drawn by: J.R.G.	Scale: 1"=50'	
Date: 19/03/88		



	QUINTERRA RESOURCES INC.	
	SYLVANITE CREEK PROPERTY	
	D.D.H. 88-13 Location	
	Tooms Twp.	1" = 400'

John R. Goodwin, MSc
Consulting Geologist



DIAMOND DRILL LOG

PROJECT: Sylvanite Creek
COMPANY: Quinterra Resources Inc
HOLE NO: SC-88-13
AZIMUTH: 010 °
LOGGED BY: John Goodwin
DRILLED BY: Longyear

LOCATION: L4 +00E/37+00N
DIP AT COLLAR: -45 °
At 605' -47°
DATE: Feb 12, 1988
Finish Feb 14, 1988.

LOG

- 0.0 - 29.0 Overburden
29.0 - 50.5 Gabbro - pale green - grey, mod hard, m-c.g., uniform texture, magnetic, foliation @ 20°, fractures @ 45°.
35.2 - 50.5 mod to strong distorted with foliation sub parallel to CA.
50.5 - 67.2 Q.F.P. and Syenite - complex zone of injection dykes to 6" @ 20 - 30°/CA. local zones of 3-5% f.g. diss py/5'.
67.2 -143.0 Mafic Tuff - pale green, m-c.g., mod. soft
72.4 - 75.6 Q.F.P. pink-grey, f.g. 1% diss py, U/LC @ 45°.
123.0 - 126.2 q.v. to 2" sub parallel to CA. with 2-3% py in patches to 3/8"
143.0-152.0 Mafic - Ultramafic Tuff/Block Tuff - pale grey, mod. soft wormy texture with irreg. felsic frags. to 1/4" x 1/2", pale green-gray matrix, foliation @ 30° to sub-parallel to CA.
152.0-298.0 Diabase - pale grey, hard, 50/50 mafic/felsic minerals, m-cg away from the contacts weakly to mod. magnetic, nil-tr py.
298.0-322.0 Mafic-Ultramafic Tuff - dark green-grey, mod. soft, foliation @ 30°/CA, weak green carbonate, talc.
322.0-337.0 Mafic Flow - pale green - grey, mod. hard, f-cg numerous thin q.v. to 1/2" @ 20-80° /CA.
337.0-355.0 Mafic Tuff - pale green, f-mg, mod. hard.
355.0-379.8 Mafic Flow - similar to 322.0 - 337.0
379.8-384.0 Felsic - Intermediate Tuff, pale green grey, 1-2% f.g. diss py.

SC-88-13 cont'd

- 384.0-535.0 Mafic-Intermediate Tuff - pale green-grey, 2-3% diss/patches
py to 1/8", foliation/bedding @ 30°/CA.
399.0 - 2" Q.F.P.
402.0 - 3" Q.F.P.
404.0 - 6" siliceous zone with 3% py.
432.0 - 4" irreg. q.v., bedding/foliation, thin streaks
specularite, minor hematite, tr py.
450.0 - 458 - numerous white q.v. to 1/4" parallel to
sub-parallel to CA, 1% scattered py to 1/8".
465.0 - scattered 12" beds light grey felsic tuff.
473.0 - 487.0 - scattered thin interbedded lapilli/block
tuff
499.0 - 1" q.v. with hematite rims, minor cubic py,
501.0 - 1" q.v.
- 535.0-559.0 Mafic Tuff - dark green-grey, 2% py as scattered patches to
1/2"
543.0 - 552.5 - Cherty Sediments, light grey, hard, poorly
bedded @ 45°, 20-30% diss py.
547.0 - 6" q.v.
- 559.0-591.0 Lamprophyre Dyke, dark grey, c.g., strongly magnetic, LC @
20°.
- 591.0-605.0 Mafic Tuff - dark green-grey, mg. scattered q.v. to 1/2"
with hematite rims.
- 605.0 End of Hole.

CORE SAMPLES

HOLE NO: SC-88-13

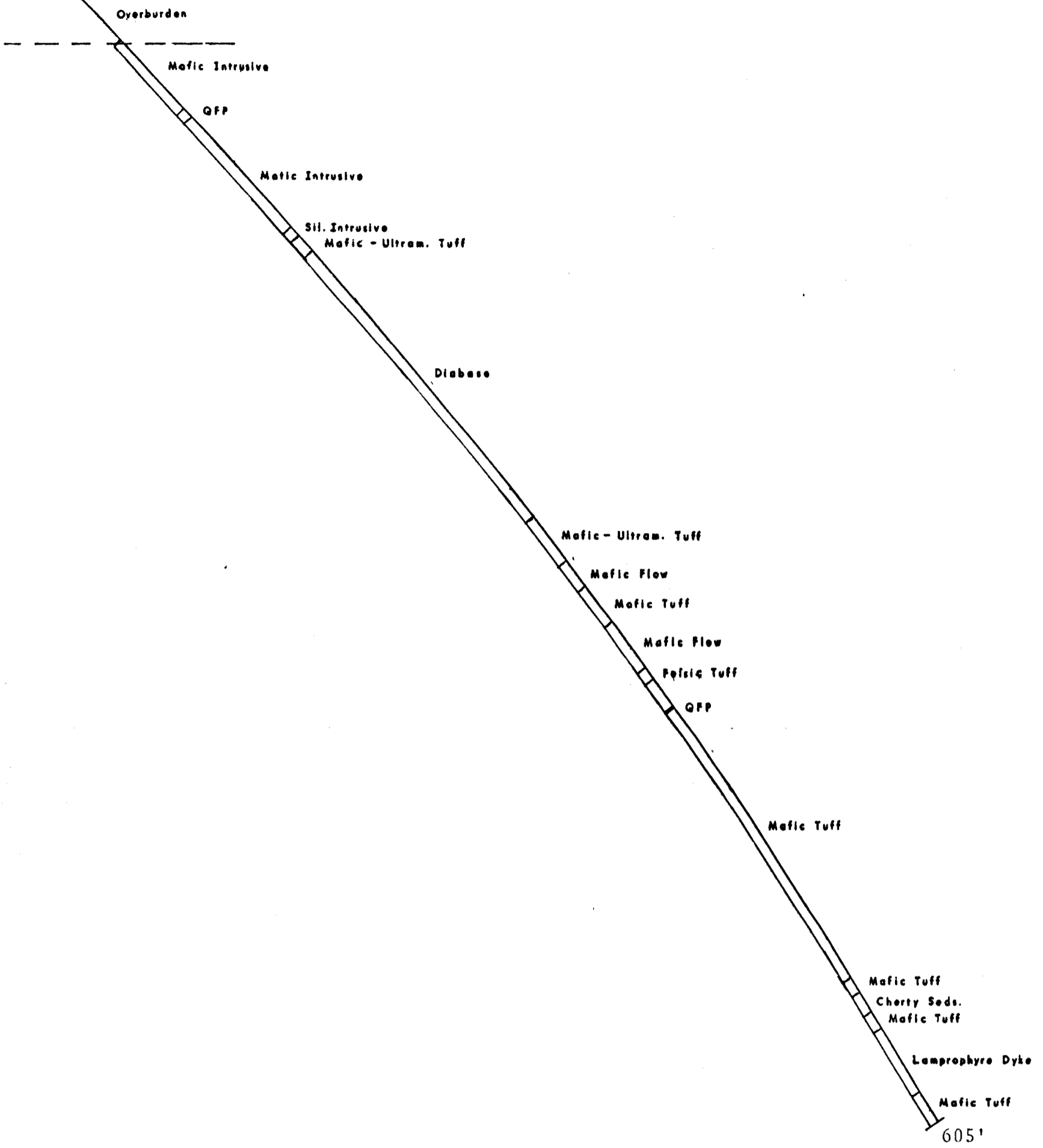
SAMPLE NUMBER	INTERVAL FROM - TO	SAMPLE LENGTH	ASSAY	
			PPB	OZ
72198	50.5 - 55.0		221	
199	55.0 - 60.0		121	
72200	60.0 - 63.0		157	
201	63.0 - 67.2		185	
202	138.5 - 143.0		157	
203	536.0 - 540.0		193	
204	540.0 - 545.5		201	
205	545.5 - 550.0		181	
206	550.0 - 554.0		176	

37+00N

38+00N

39+00N

40+00N



northern
exploration inc.



northern
exploration inc.

QUINTERRA RESOURCES INC.
 SYLVANITE CREEK PROPERTY
 D.D.H. 88-13 Section
 Looking West

NO: 38-13	Log by: J.R. Goodwin	Date: 2/02/88
Location: L. 4+00 E. 37+00 N		
Azimuth: 010°	Depth: 605'	
Dip: -45°	Claim: P648675	
Drawn by: J.R.G.	Scale: 1" = 50'	
Date: 19/03/88		30'



41010NW0053 27 TOOMS

900

Name and Postal Address of Recorded Holder
Quinterra Resources Inc.
 1275 Main St North Bay

MAR 23 1988

Summary of Work Performance and Distribution of Credits

Total Work Days Cr. claimed 6477 days	Mining Claim			RECEIVED	Mining Claim			
	Prefix	Number	Work Days Cr.		Prefix	Number	Work Days Cr.	
for Performance of the following work. (Check one only) <input type="checkbox"/> Manual Work <input type="checkbox"/> Shaft Sinking Drifting or other Lateral Work. <input type="checkbox"/> Compressed Air, other Power driven or mechanical equip. <input type="checkbox"/> Power Stripping <input checked="" type="checkbox"/> Diamond or other Core drilling <input type="checkbox"/> Land Survey		702507	60.00		702515	60.00	702523	60.00
		702508	60.00		702516	60.00	702524	60.00
		702509	60.00		702517	60.00	702525	60.00
		702510	60.00		702518	60.00	702527	60.00
		702511	60.00		702519	60.00	702528	60.00
		702512	60.00		702520	60.00	702529	60.00
		702513	60.00		702521	60.00	702530	60.00
		702514	60.00		702522	60.00	702531	60.00

All the work was performed on Mining Claim(s): P630745, P630746, P630747, P648666, P648667, P648676, P648675, P648682, P648681, P631340

Required Information eg: type of equipment, Names, Addresses, etc. (See Table Below)

107 CLAIMS

Diamond Drilling by Jorgensen Canada, 1111 Main St W, North Bay

Hole #	# feet	Dates Drilled	Hole #	# ft	Dates Drilled
SC-88-1	335.0	Jan 19-21/88	SC-88-9	535	Feb 3-5/88
SC-88-2	361.0	Jan 21-23/88	SC-88-10	505	Feb 1-3/88
SC-88-3	751.0	Jan 23-25/88	SC-88-11	515	Feb 7-9/88
SC-88-4	465.0	Jan 25-27/88	SC-88-12	495	Feb 9-12/88
SC-88-5	355.0	Jan 27-28/88	SC-88-13	665	Feb 12-14/88
SC-88-6	505.0	Jan 28-31/88			
SC-88-7	555.0	Jan 31-Feb 1/88			
SC-88-8	495.0	Feb 1-3/88			

RECORDED
MAR 23 1988

BQ core

Date of Report March 16/88	Recorded Holder or Agent (Signature) Emmille Dubois
-------------------------------	--

Certification Verifying Report of Work

I hereby certify that I have a personal and intimate knowledge of the facts set forth in the Report of Work annexed hereto, having performed the work or witnessed same during and/or after its completion and the annexed report is true.

Name and Postal Address of Person Certifying
 Noranda Spinning Inc. 1275 Main St North Bay, Ontario

Date Certified: March 16/88
 Certified by (Signature): Emmille Dubois

Required by the Mining Recorder

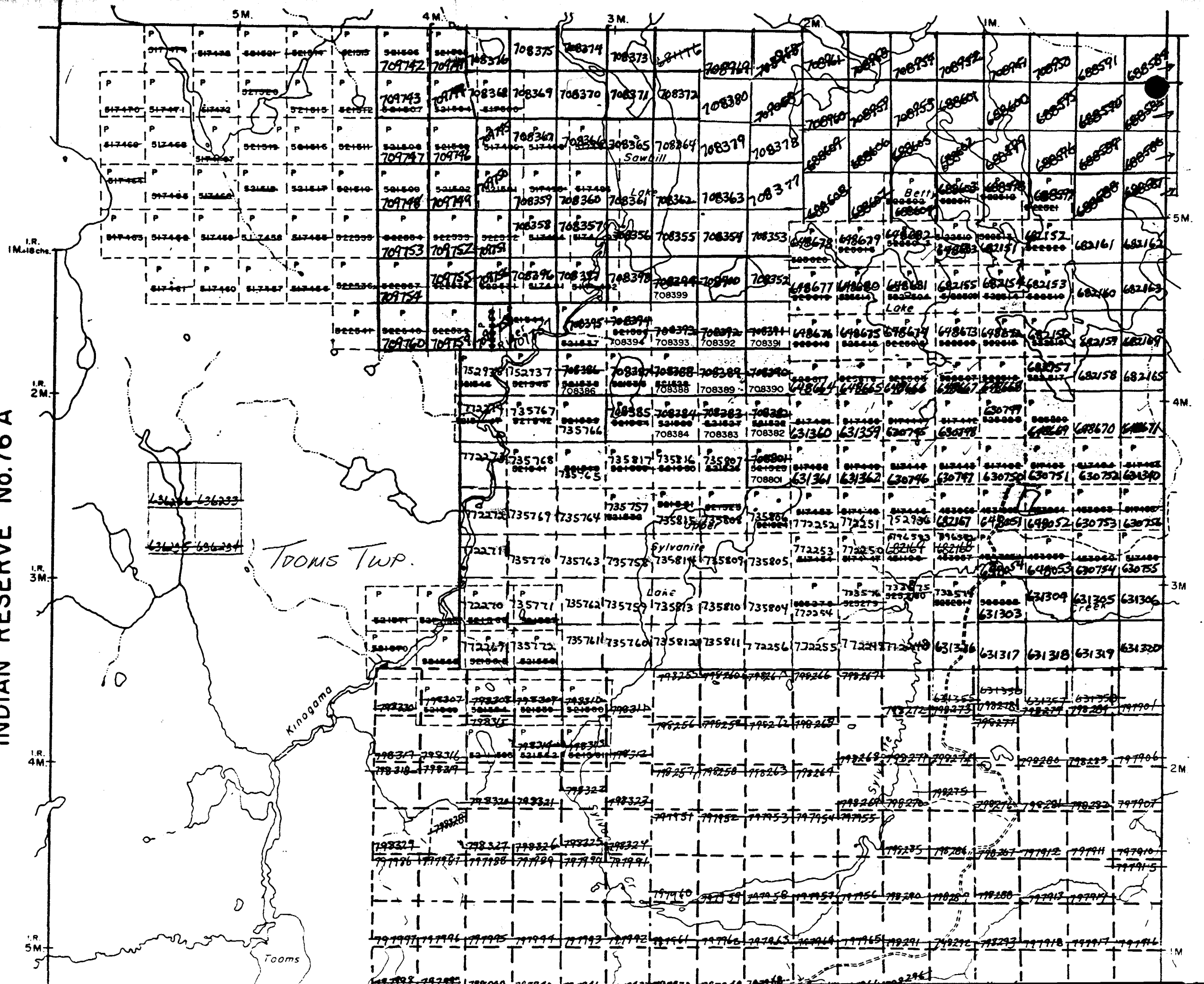
Specific information per type	Other information (Common to 2 or more types)	Attachments
<input type="checkbox"/> Manual Work <input type="checkbox"/> Shaft Sinking, Drifting or other Lateral Work <input type="checkbox"/> Compressed air, other power driven or mechanical equip. <input type="checkbox"/> Power Stripping <input type="checkbox"/> Diamond or other core drilling <input type="checkbox"/> Land Survey	Names and addresses of men who performed manual work/operated equipment, together with dates and hours of employment. Names and addresses of owner or operator together with dates when drilling/stripping done.	Work Sketch: these are required to show the location and extent of work in relation to the nearest claim post. Work Sketch (as above) in duplicate
Type of equipment Type of equipment and amount expended. Note: Proof of actual cost must be submitted within 30 days of recording. Signed core log showing; footage, diameter of core, number and angles of holes. Name and address of Ontario land surveyer.	NII	NII

SYLVANITE LAKE CLAIMS CONTINUED

CLAIM #	# DAYS	CLAIM #	# DAYS	CLAIM #	# DAYS
709741	60.00	735769	60.00	772271	60.00
709742	60.00	735770	60.00	772272	60.00
709743	60.00	735771	60.00	772273	60.00
709744	60.00	735772	60.00	772274	60.00
709745	60.00	735804	60.00	✓733574	80.00
709746	60.00	735805	60.00	•733575	80.00
709747	60.00	735806	58.00	-733576	80.00
709748	60.00	735807	60.00	✓796582	80.00
709749	60.00	735808	58.00	✓796583	80.00
709750	60.00	735809	58.00	831988	80.00
709751	60.00	735810	60.00	831989	80.00
709752	60.00	735811	60.00	831990	80.00
709753	60.00	735812	60.00	831991	80.00
709754	60.00	735813	60.00	-981174	200.00
709755	60.00	735814	60.00		
709756	60.00	735815	60.00		
709757	60.00	735816	60.00		
709758	60.00	✓735817	60.00		
709759	60.00	✓752936	58.00		
✓709760	60.00	✓752937	60.00		
735757	60.00	✓752938	60.00		
735758	60.00	772248	58.00		
735759	60.00	772249	58.00		
735760	60.00	772250	58.00		
735761	60.00	772251	58.00		
735762	60.00	772252	58.00		
735763	60.00	772253	58.00		
735764	60.00	772254	58.00		
735765	60.00	772255	58.00		
735766	60.00	772256	60.00		
735767	80.00	772269	60.00		
735768	60.00	772270	60.00		

TOOMS TWP

Mountbatten Twp. - M.875 INDIAN RESERVE No.76 A



Creston Twp. M.805