



41010NW0063 14 TOOMS

010

Diamond Drilling

Township of TOOMS

Report No 14

Work performed by: Granges Exploration

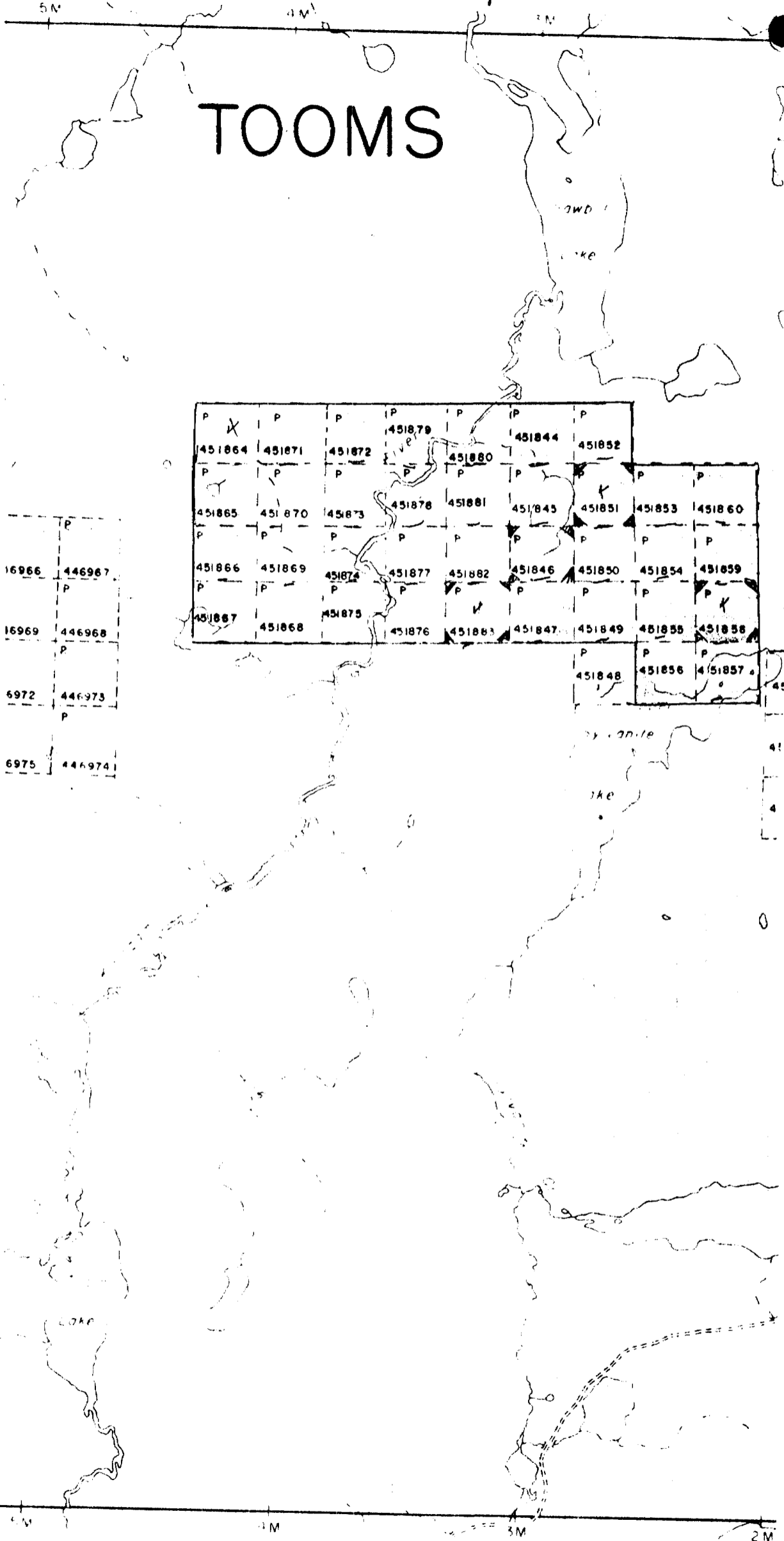
Claim No	Hole No	Footage	Date	Note
P 451858	SW-13	163.0'	Feb/77	(1)
P 451851	SW-15	167.0'	Feb/77	(1)
P 451883	SW-16	238.0'	Feb/77	(1)
P 451846	SW-17	186.0'	Feb/77	(1)
		754.0'		

Notes:

(1) #92-77

#92-77

TOOMS



Cross-Section: SW 13

Grid 32
0+00, 14+65 N
-55°

conductor

Overburden

100'

Sil., Min. Zone
Quartz
Sil., Min. Zone
Breccia
Cal. And. Tuff

buried

T. D. 163'

NO VALUES

Granges Exploration Ab.
Swayze Joint Venture
Tocms Twp, Ontario
Looking Grid East
1" = 40', 23/2/77, H.H.S.

LOCATION SKETCH
HOLES SW-13,15
SCALE 1" = 400'

TOONS TWP

P.451859

870'

P.451851

440'

SW-15
-50°

P.451853

P.451850

P.451854

P.451858

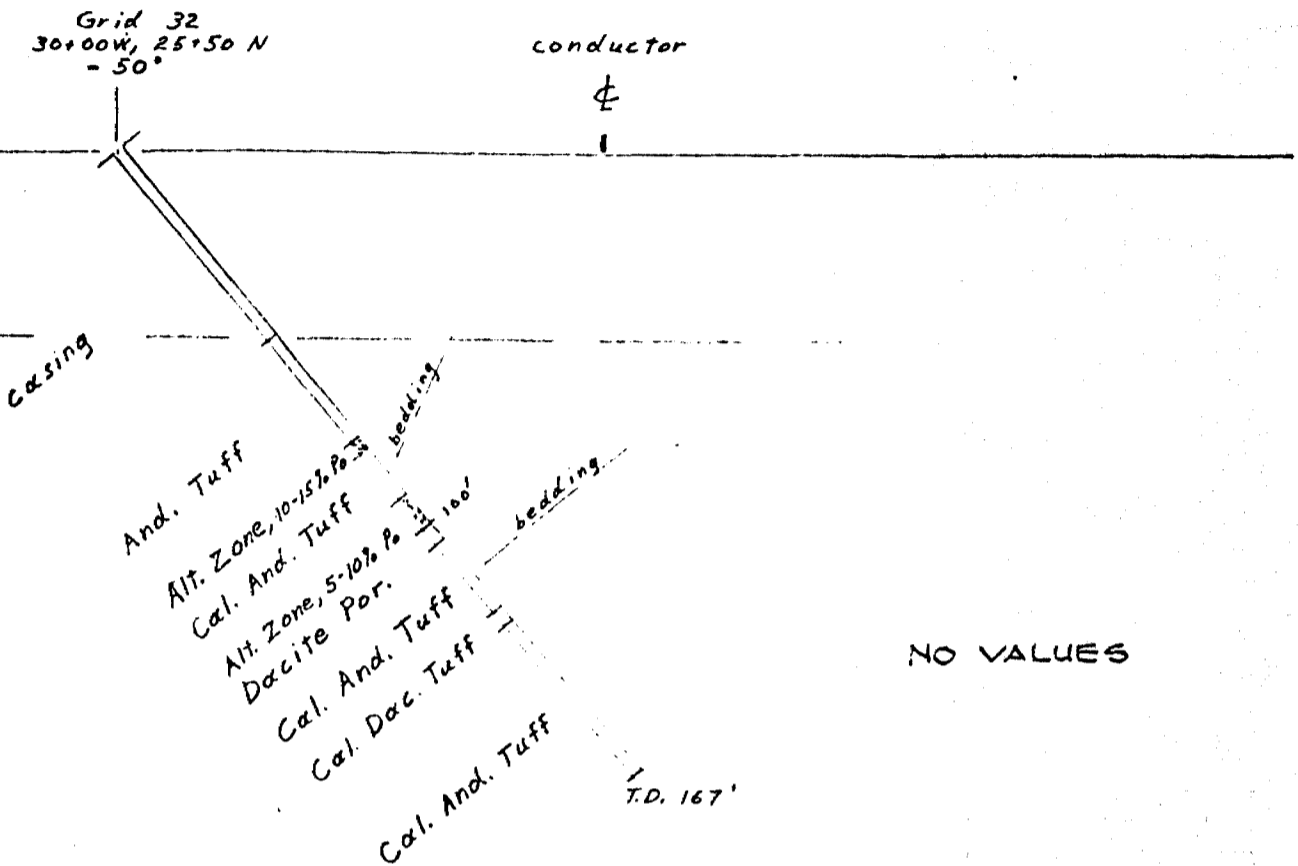
135'

SW-13
-55°

515'



Cross-Section: SW 15



Granges Exploration Ab.
Swayze Joint Venture
Toorns Twp., Ontario

Looking Grid East
1" = 40', 26/2/77, H.H.S.

LOCATION SKETCH
HOLES SW-13,15
SCALE 1"= 400'

TOOMS TWP

P.451859

870'

P.451851

P.451853

440'

SW-15
-50°

P.451850

P.451854

P.451858

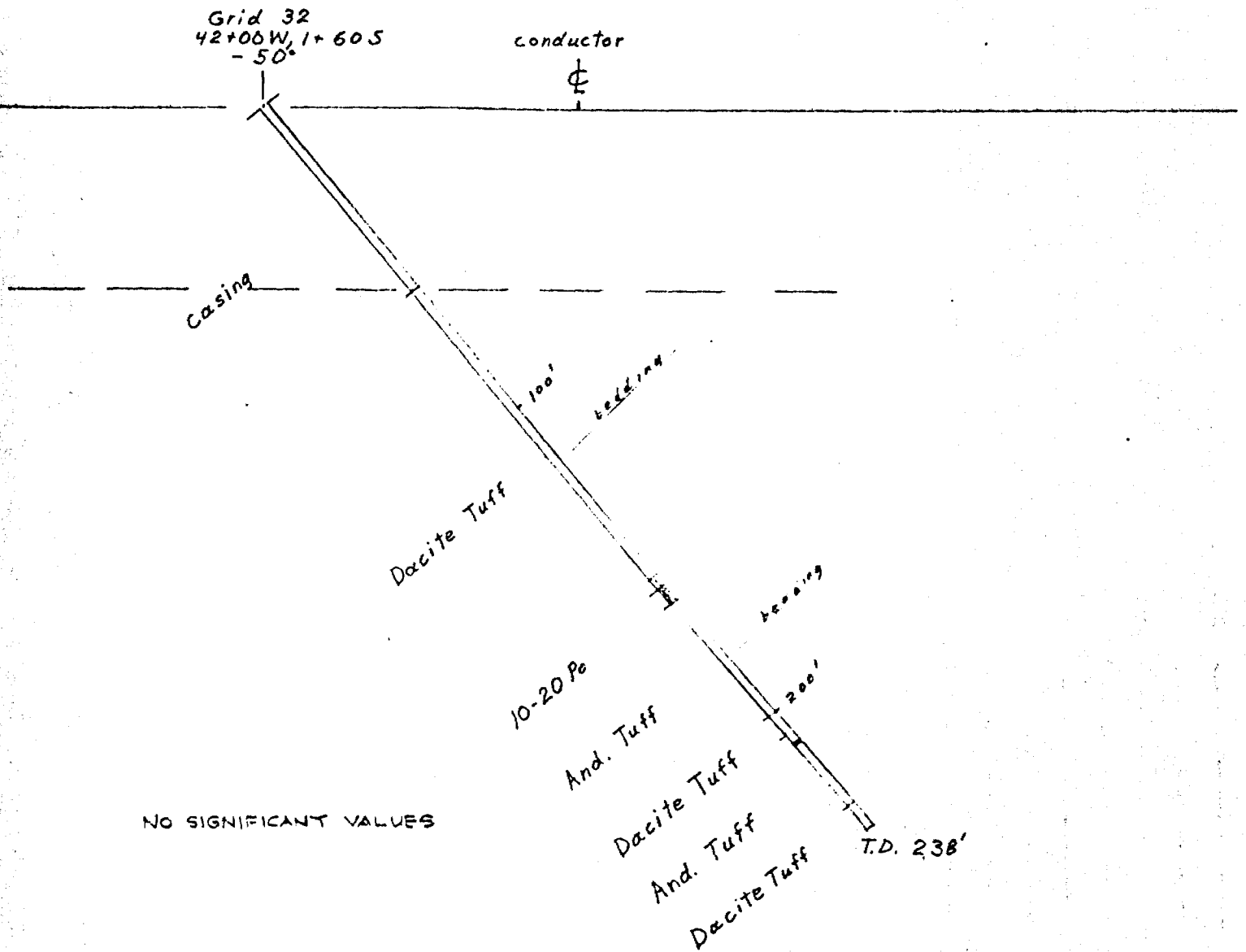
135'

SW-13
-55°

515'



Cross-Section: SW 16

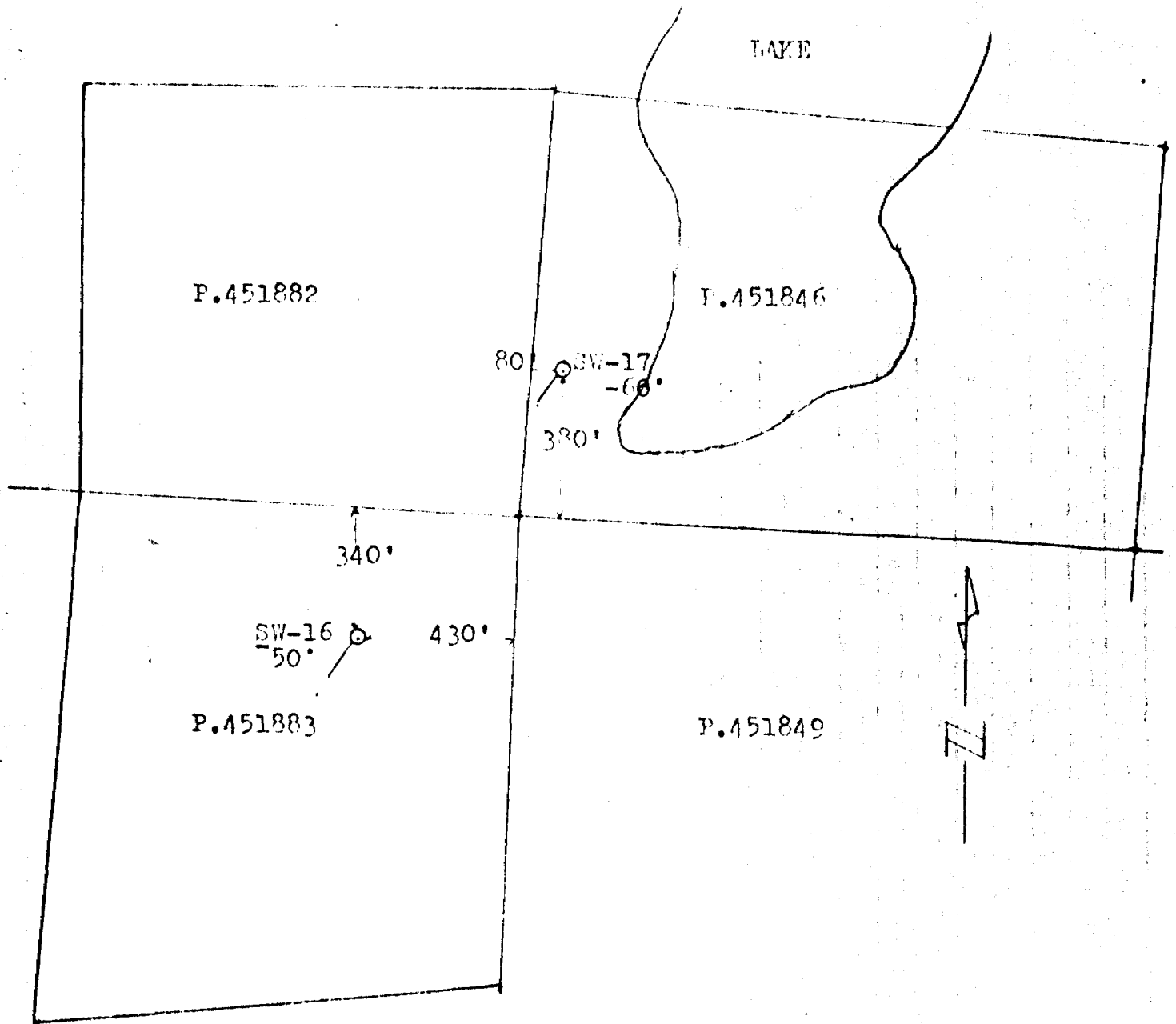


Granges Exploration Ab.
Swayze Joint Venture
Tooms Twp., Ontario

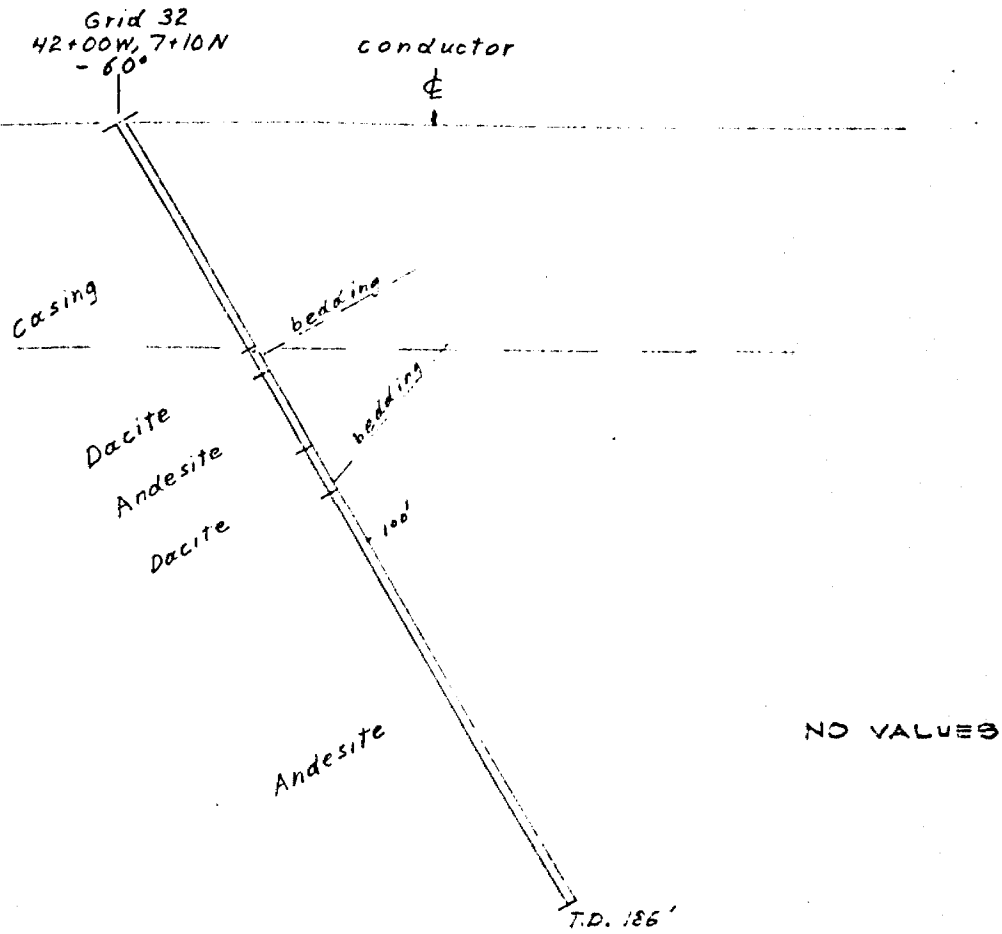
Looking Grid East
1" = 40', 27/2/77, H.H.S.

LOCATION SKETCH
HOLES SW-16,17
SCALE 1"= 400'

TOOMS TWP.



Cross-Section: SW 17



Granges Exploration Ab.
Swayze Joint Venture
Tooms Twp., Ontario
Looking Grid East
1" = 40', 3/1/77, H.H.S.

LOCATION SKETCH
HOLES SW-16, 17
SCALE 1" = 400'

TOOLE T. P.

