

41010NW0064 13 TOOMS

010

Diamond Drilling

Township of TOOMS

Report No 13

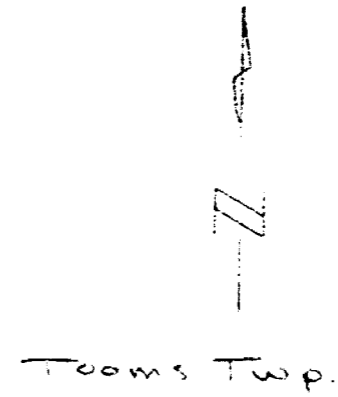
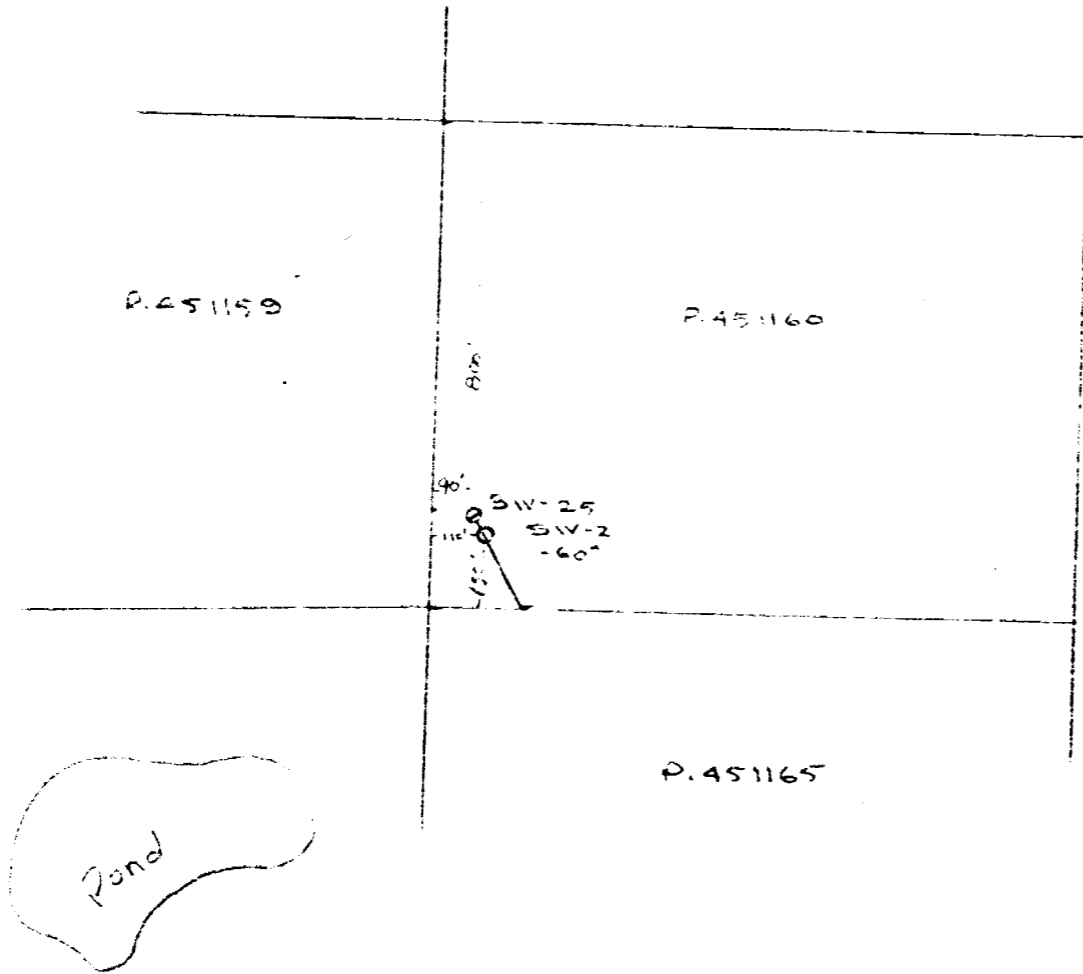
Work performed by: Granges Exploration

Claim No	Hole No	Footage	Date	Note
P 451140	SW-1	287.0'	Feb/77	(1)
P 451160	SW-2	327.0'	Feb/77	(1)
P 451108	SW-3	257.0'	Feb/77	(1)
P 451148	SW-4	217.0'	Feb/77	(1)
P 451108	SW-20	304.0'	Mar/77	(1)
P 451146	SW-22	210.0'	Mar/77	(1)
P 451160	SW-25	147.0'	Mar/77	(1)

1748

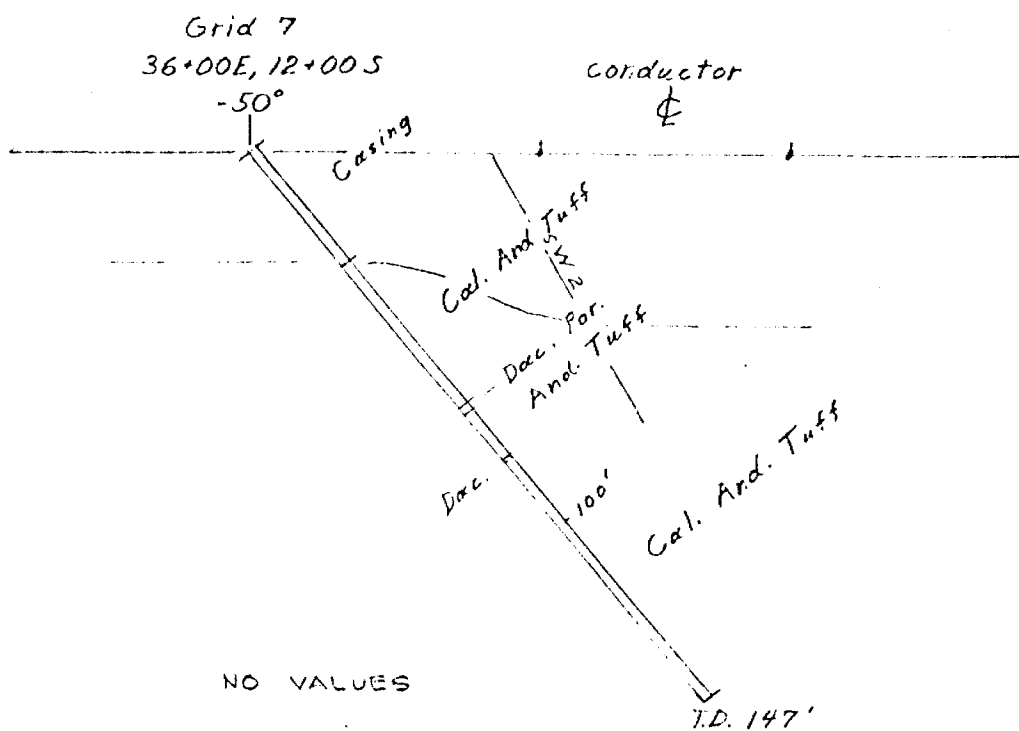
Notes:

(1) #93-77



Location Sketch
 Holes SW-2, SW-25
 1" = 400'

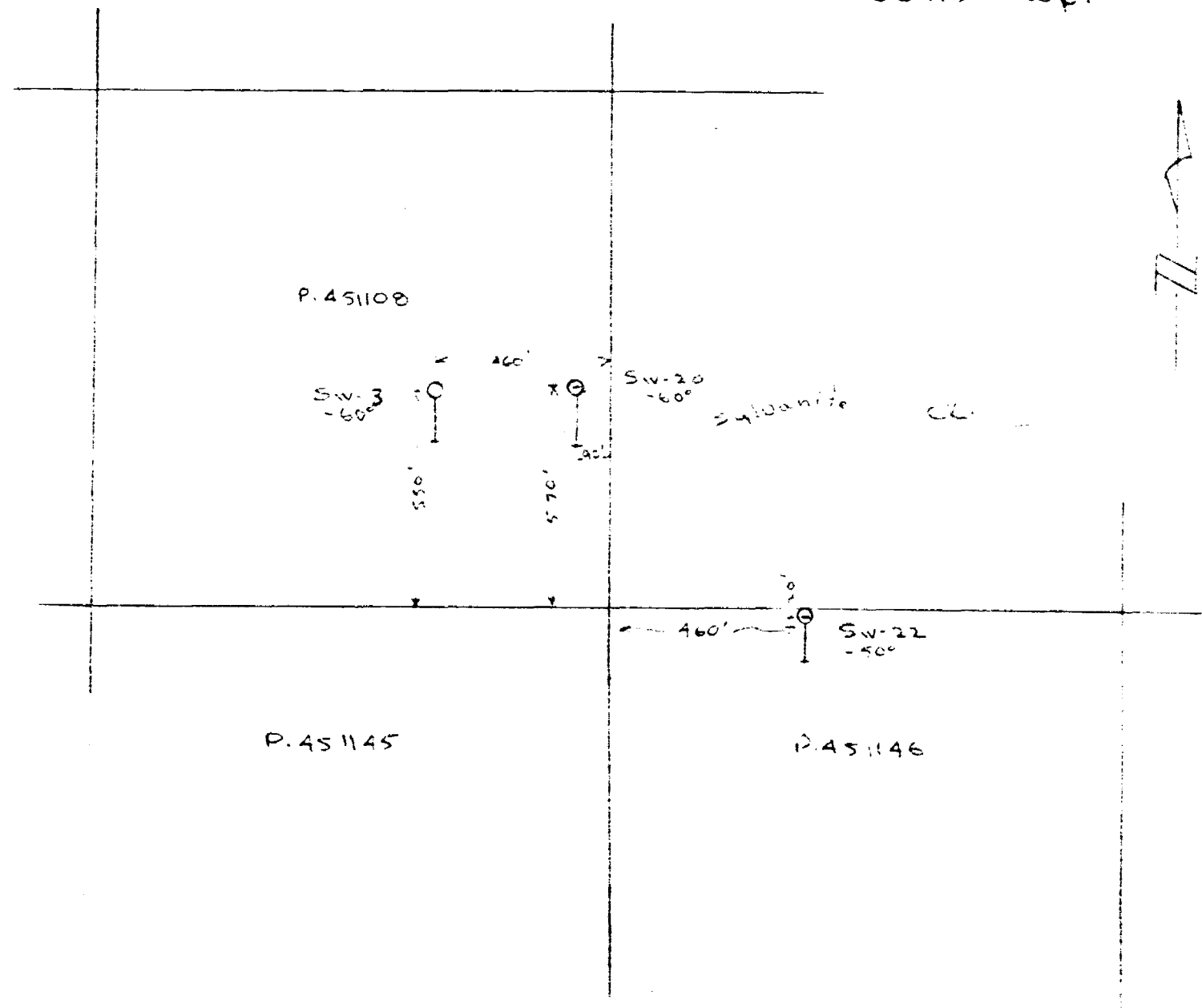
Cross-Section: SW 25



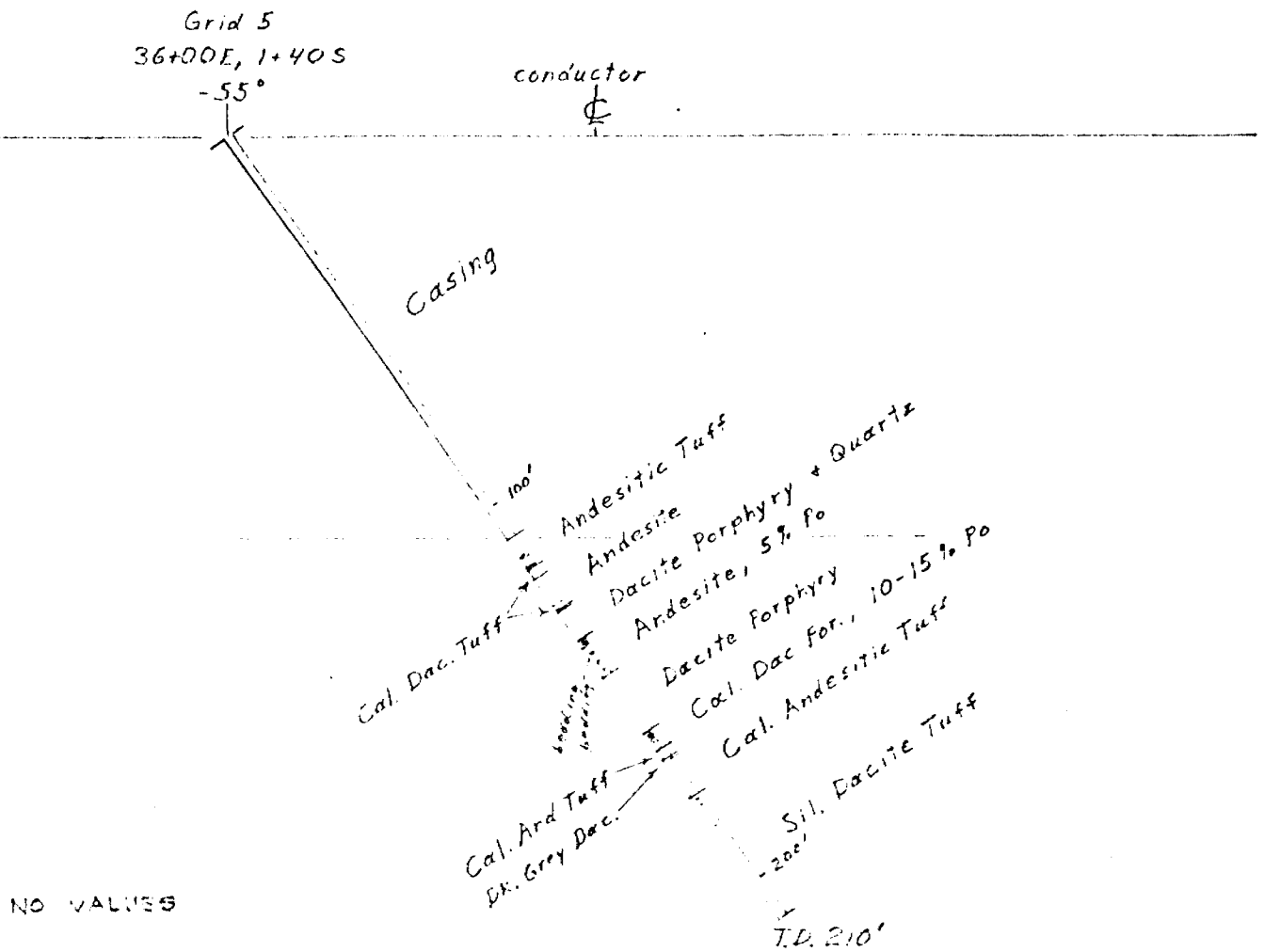
Granges Exploration Ab.
Swayze Joint Venture
Tooms Twp., Ontario

Locking Grid East
1"=40', 12/3/77, H.H.S.

Location Sketch
Holes SW-3, 20, 22
1" = 400'
Tooms Twp.



Cross-Section: SW 22



Granges Exploration Ab
Swayze Joint Venture
Tooms Twp, Ontario

Locking Grid East
1" = 40', 17/3/77, H.H.S.



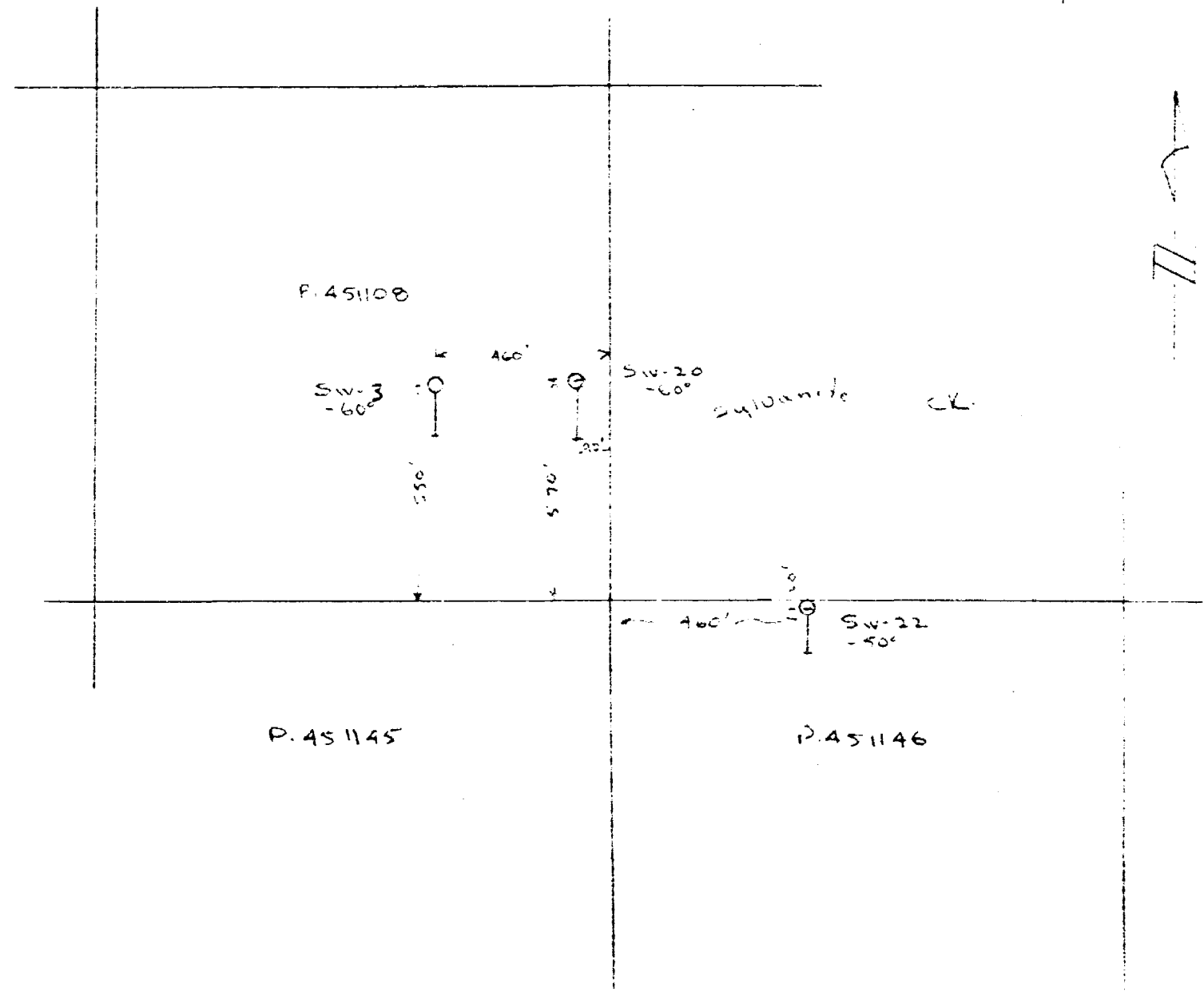
GRANGES EXPLORATION AB
CANADIAN DIVISION
DIAMOND DRILL LOG

Property *W. 22* Project No. *36+00 E* Depth *121'* Date Begun *March 13, 1977*
 Hole No. *SW 22* Co ord. *36+00 E* Horizontal Length *121'* Date Completed *March 13, 1977*
 Sheet No. *1* Direction *Grid South* Drilled By *Bradley Bros.*
 Claim No. *P 451146* Elevation *Grid 5* Angle *-55°* Logged By *H. Shear*

FOOTAGE	DESCRIPTION	ALTERATION								% REC'Y CALC'D.
		FROM	TO							
0-108'	Casing									
108'-116'	Andesite tuff, dark green, minor cal. 1-2% py + px, tr cp	112	112.5							
116'-118.5'	Calcareous dacite tuff	114.5	115.5							
118.5'-125.7'	Dark green andesite, ab. chl., 5% po, minor py, tr cp, qtz bands up to 0.5'	115.5	116	qtz						
125.7'-126.8'	Calcareous dacite tuff									
126.8'-127.3'	Dark green andesite, 10-15% po, minor py									
127.3'-134.9'	Dacite porphyry with 60% qtz as bands and grading into dac. per. sporadic blocks of po (-1%) mainly in qtz.									
134.9'-145'	Dark green andesite, ab. chl., qtz bands 5% po, minor py, tr cp.	135	137			20% po				
145'-159.9'	Dacite porphyry, minor cal.									
159.9'-164.7'	Calcareous dacite porphyry, 10-15% po, minor py, tr cp.									
164.7'-166.7'	Calcareous andesitic tuff, minor po									
166.7'-167.4'	dark grey dacite (?), ab. bio.									
167.4'-177'	Calcareous andesitic tuff									
177'-210'	Moderately siliceified dacite tuff, 2-3% po on bedding planes to 183' then decreasing to nil at 198'									
	<u>Mineralization</u>									
125'-125.7'	10-20% po in and.									
126.8'-127.3'	10-15% po in and.									
134.9'-145'	5% po in and.									
159.9'-164.7'	10-15% po in cal. dac. per.									

Note: Bedding varies from 35-50° throughout

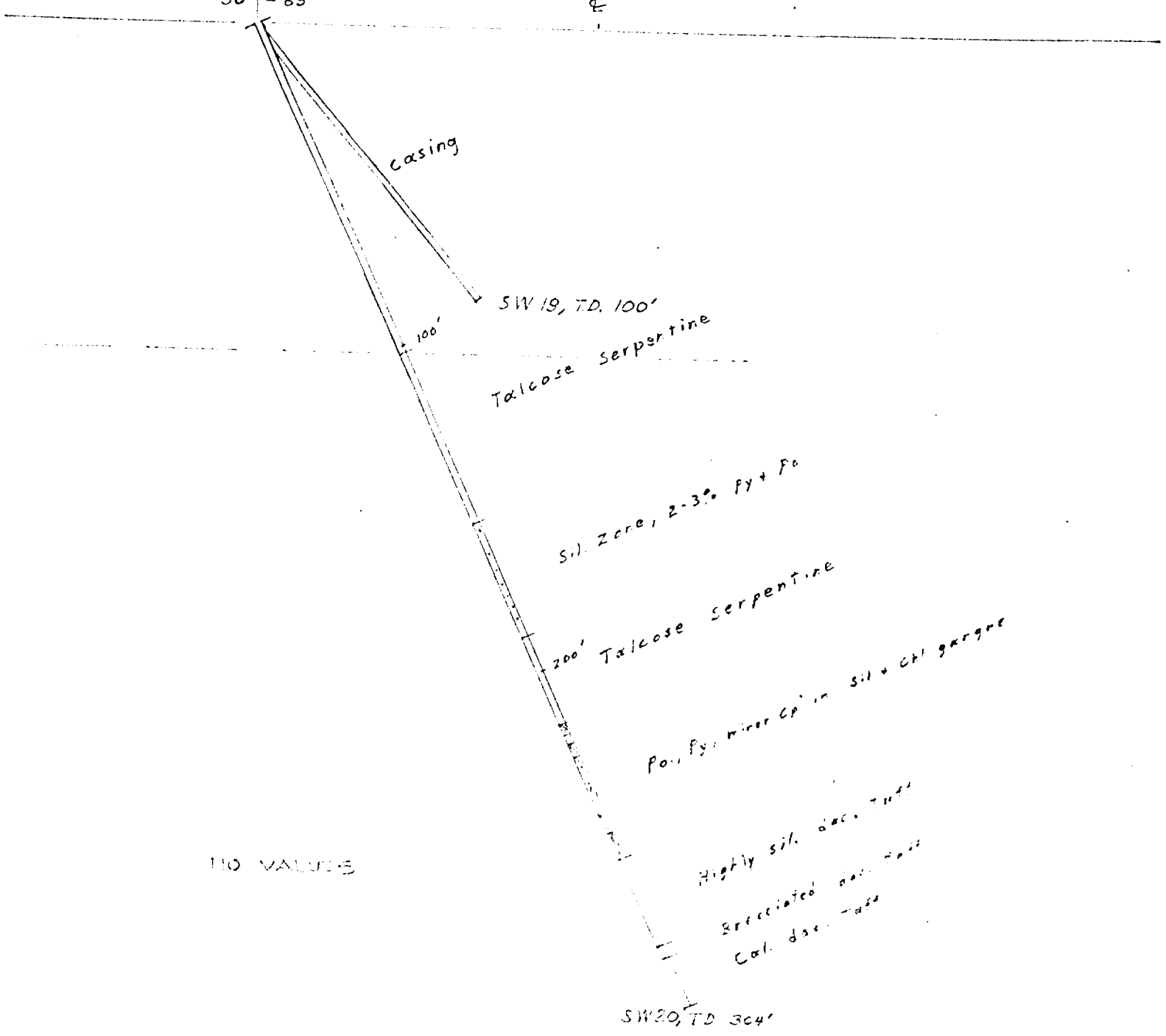
Location Sketch
Holes SW-3, 20, 22
1" = 400'
Tooms Twp.



Cross-Section: SW 19 and 20
Looking Grid East

Grid 5
30+00E, 4+20N
-50' - 65°

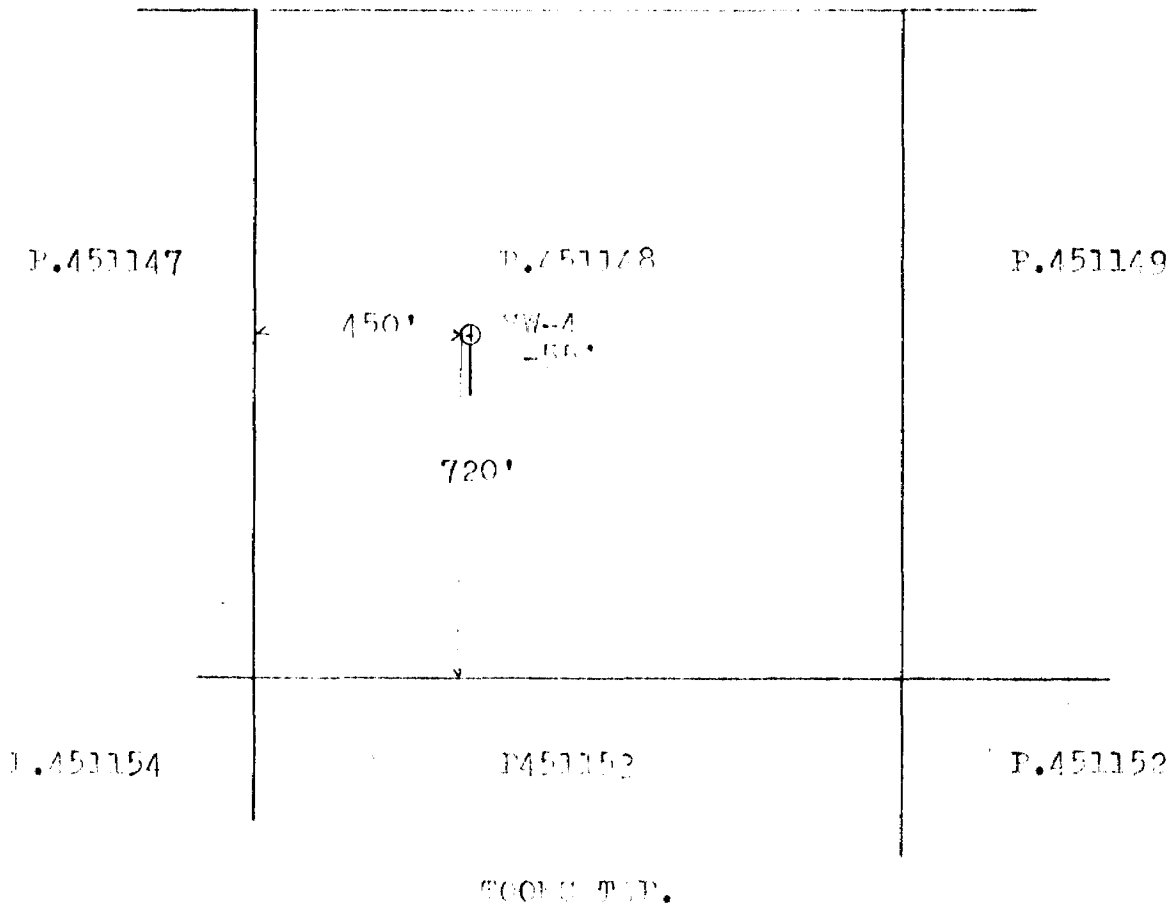
conductor

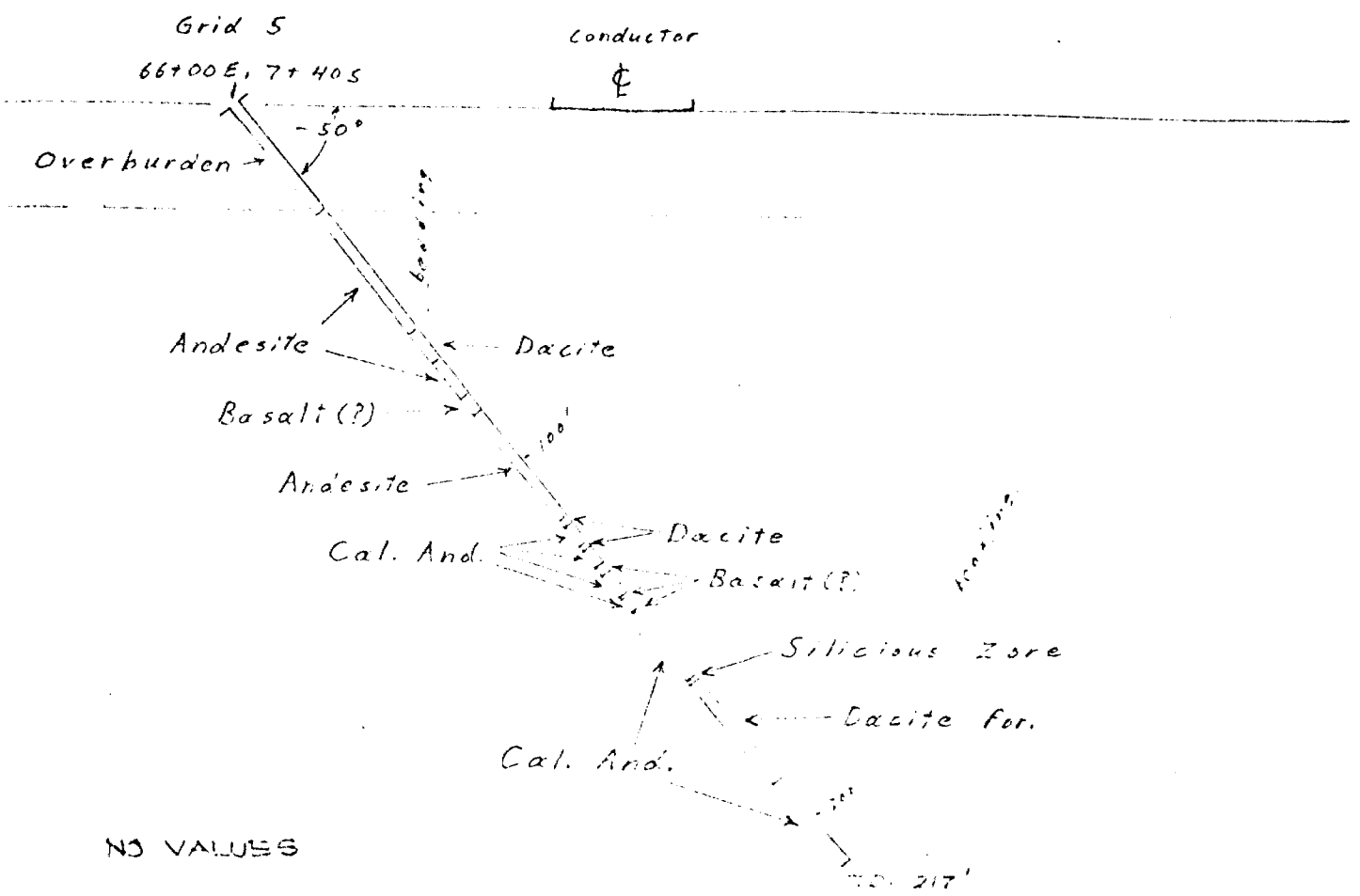


NO VALUE

Granges Exploration Ab.
Swayze Joint Venture
Tooms Twp., Ontario
1" = 40', 10/3/77, H.H.S.

LOCATION SKETCH
HOLE NO. SW-4
SCALE 1" = 400'





GRANGES EXPLORATION AB
 Cross Section SW: 4
 Looking Grid East
 Scale 1" = 40', N.H.S.
 Feb 13, 1957

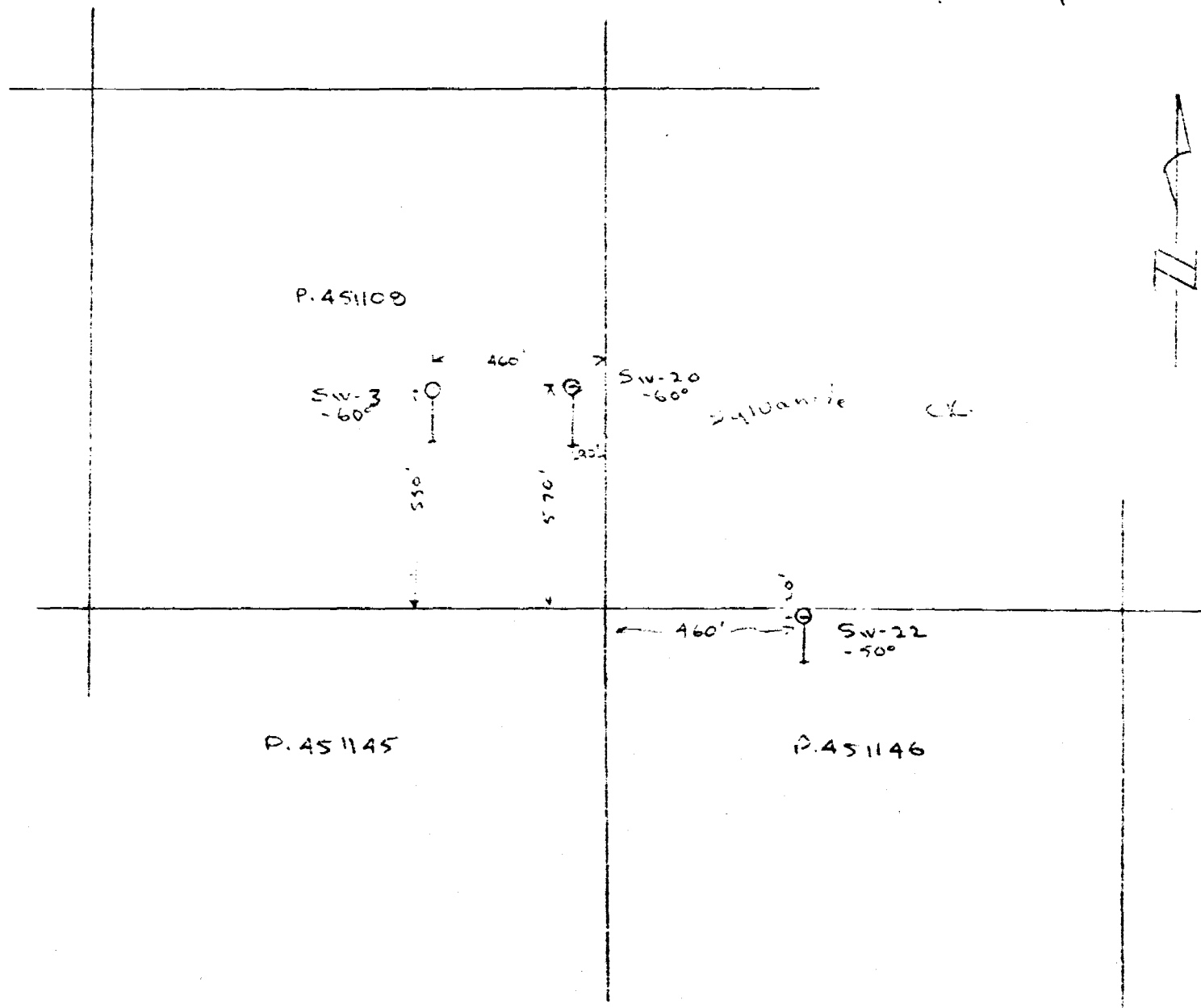


GRANGES EXPLORATION AB
CANADIAN DIVISION
DIAMOND DRILL LOG

Property *Swaize* Project No. *70504* Depth *217'* Date Began *Feb. 11, 1977*
 Hole No. *SW 4* Co ord. *66+00E, 7+40S* Horizontal Length *137'* Date Completed *Feb. 12, 1977*
 Sheet No. *1* Direction *grid South* Drilled By *Bradley Bros.*
 Claim No. *P.H.S. 1148* Elevation *Grid 5* Angle *-50°* Logged By *H. Shaar*

FOOTAGE	DESCRIPTION	ALTERATION						% RECY CALC'D.
		FROM	TO					
0 - 30'	Overburden							
30' - 63'	Andesite grading from dark to light green, small calcareous bands (bedding?) @ 40° to core axis					minute pyrr.	occasional sil. veinlets	100
63' - 71'	Grey dacite, lineations @ 40° to core axis							
71' - 81'	Medium green andesite							
81' - 85.5'	Black fragmental basalt(?); fragments to 1/2"; abundant white specks of calcite, bronze phlogopite and green malapelite; magnetic					minor pyrr. in spots		
85.5' - 115.5'	Dark green andesite grading to light green calcareous andesite					occasional sil. + cal. veinlets with minor epi.		
115.5' - 117.5'	{ Well bedded dark greyish-brown dacite(?), bedding @ 50° to core axis							
117.5' - 123'	Calcareous andesite							
123' - 124'	Greyish-brown dacite(?)							
124' - 127.5'	Calcareous andesite							
127.5' - 131'	Black calcareous basalt(?), same as 71' - 85.5'							
131' - 137'	Cal. and.							
137' - 137.5'	Bk. cal. basalt(?) (as above)							
137.5' - 140.75'	Cal. and.							
140.75' - 141.25'	Bk. cal. basalt(?) (as above)							
141.25' - 160'	Cal. and.							
160' - 161'	Silicious zone or quartz vein, minor py, minute ep							
161' - 189	Calcareous dacite porphyry					@ 189 : 6" qtz vein on contact		
189 - 217 end	Cal. and.; bedding @ 65° to core axis	189	217			Scattered qtz. veinlets, minute pyrr., two specks of ep observed.		

Location Sketch
Holes SW-3, 20, 22
1" = 400'
Tooms Twp.

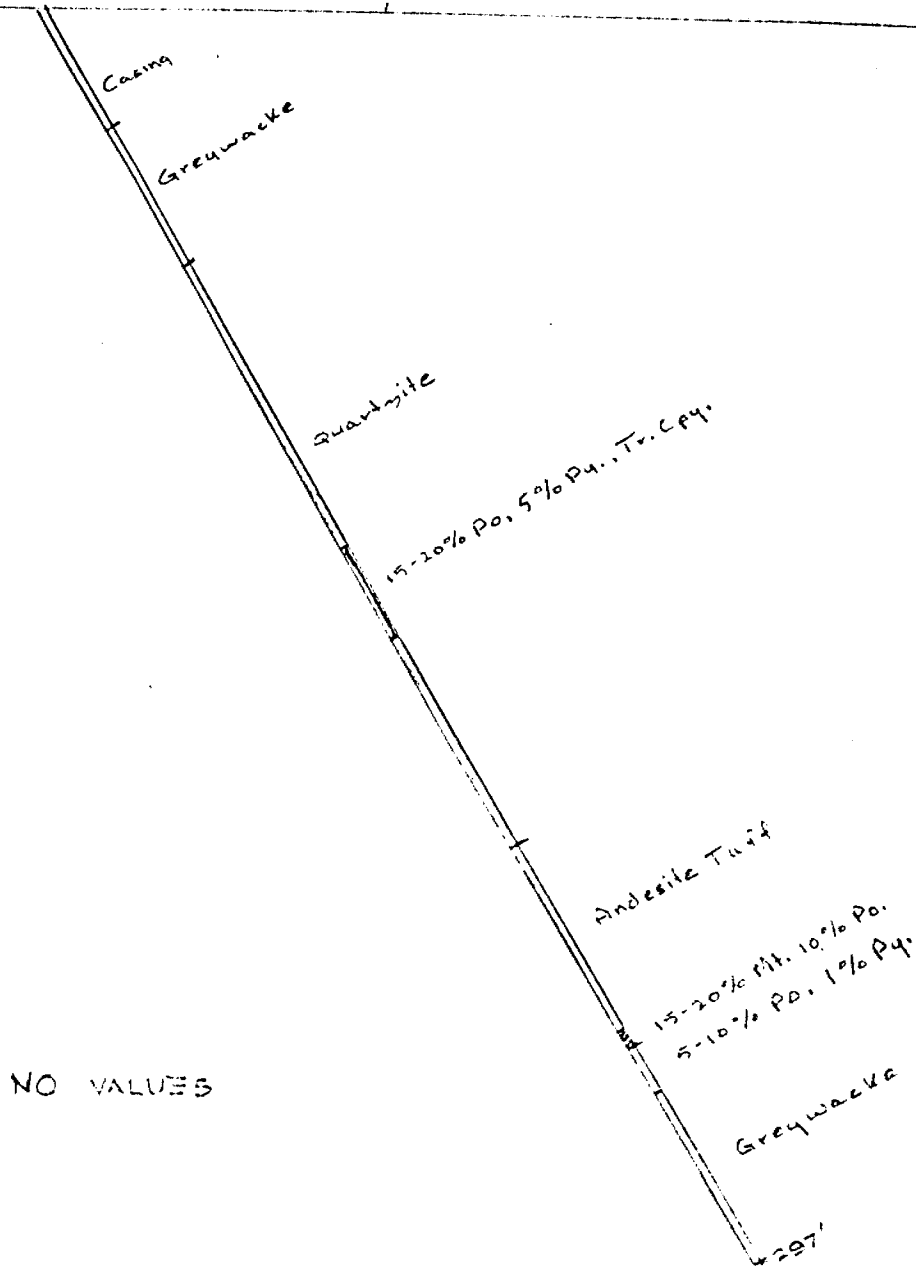


3W-3

GRID 5
26+70E
4+00N
-60°

CONDUCTOR

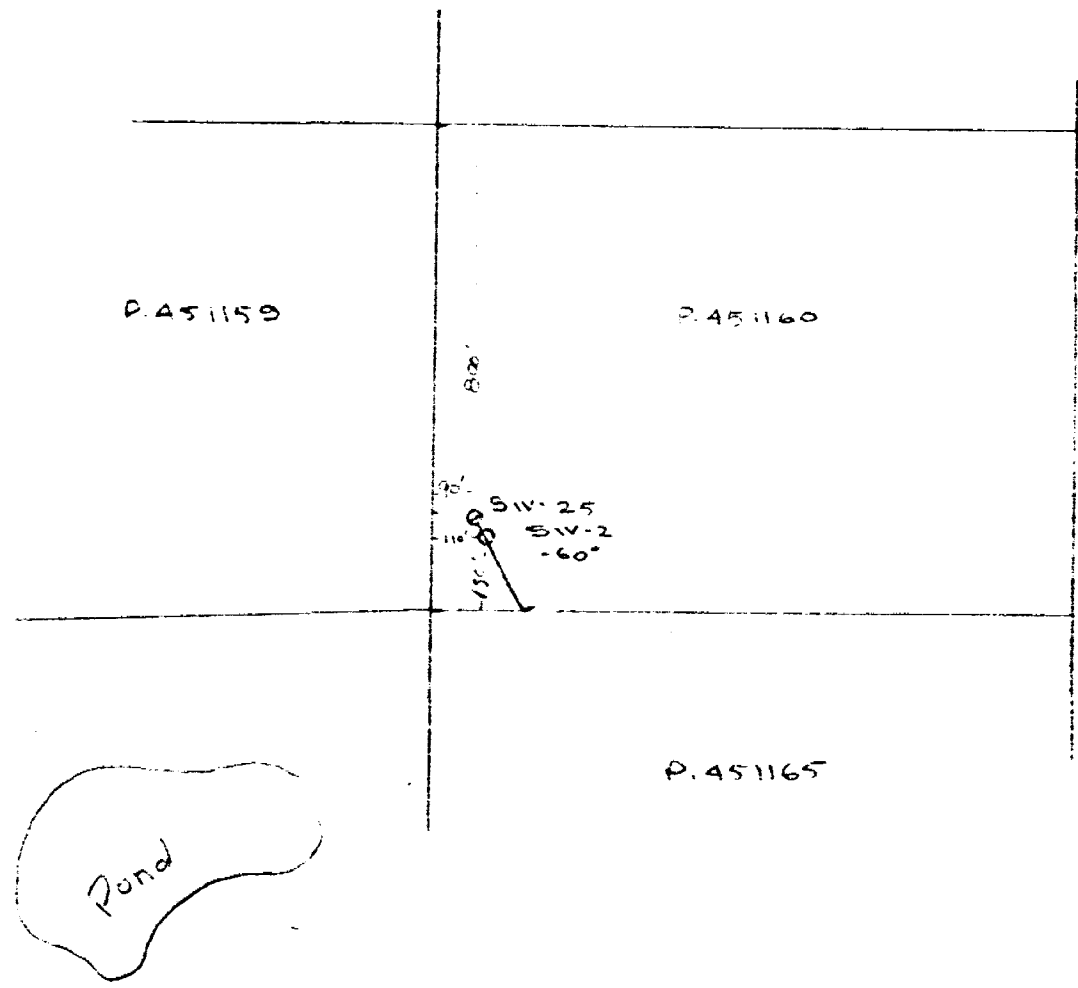
⊕



NO VALUES

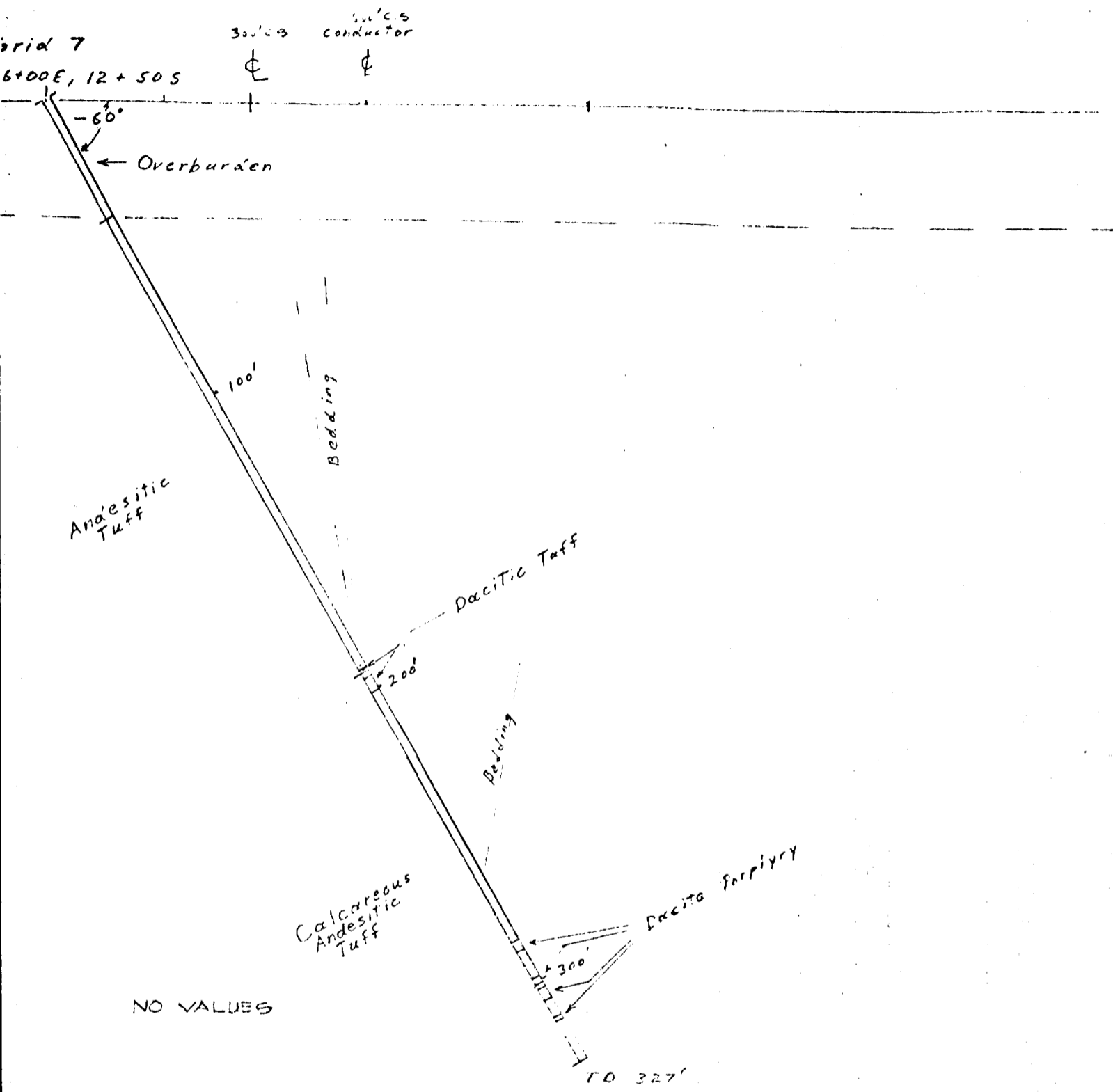
297'

GRANDES EXPLOREATION AB
SWAYZE JOINT VENTURE
TOWNSHIP, ONTARIO
LOOKING EAST, 1"=40'
HOLE SW-3



Tooms Twp.

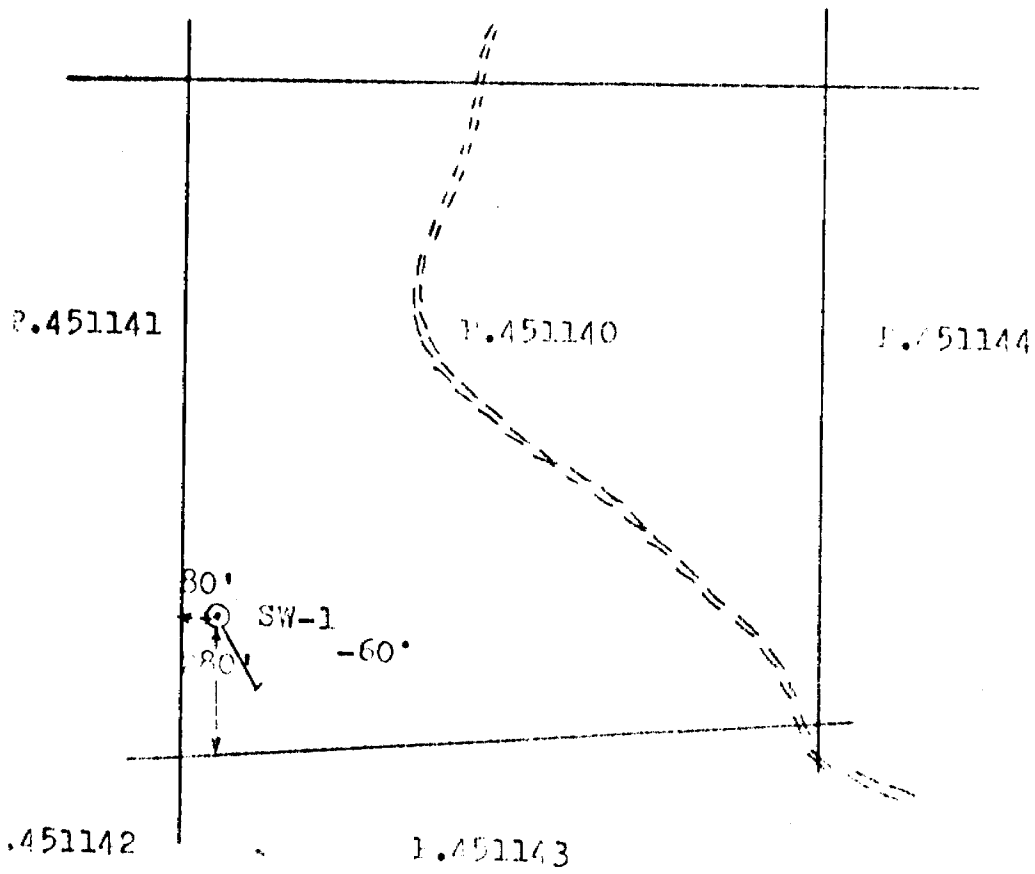
Location Sketch
Holes SW-2, SW-25
1" = 400'

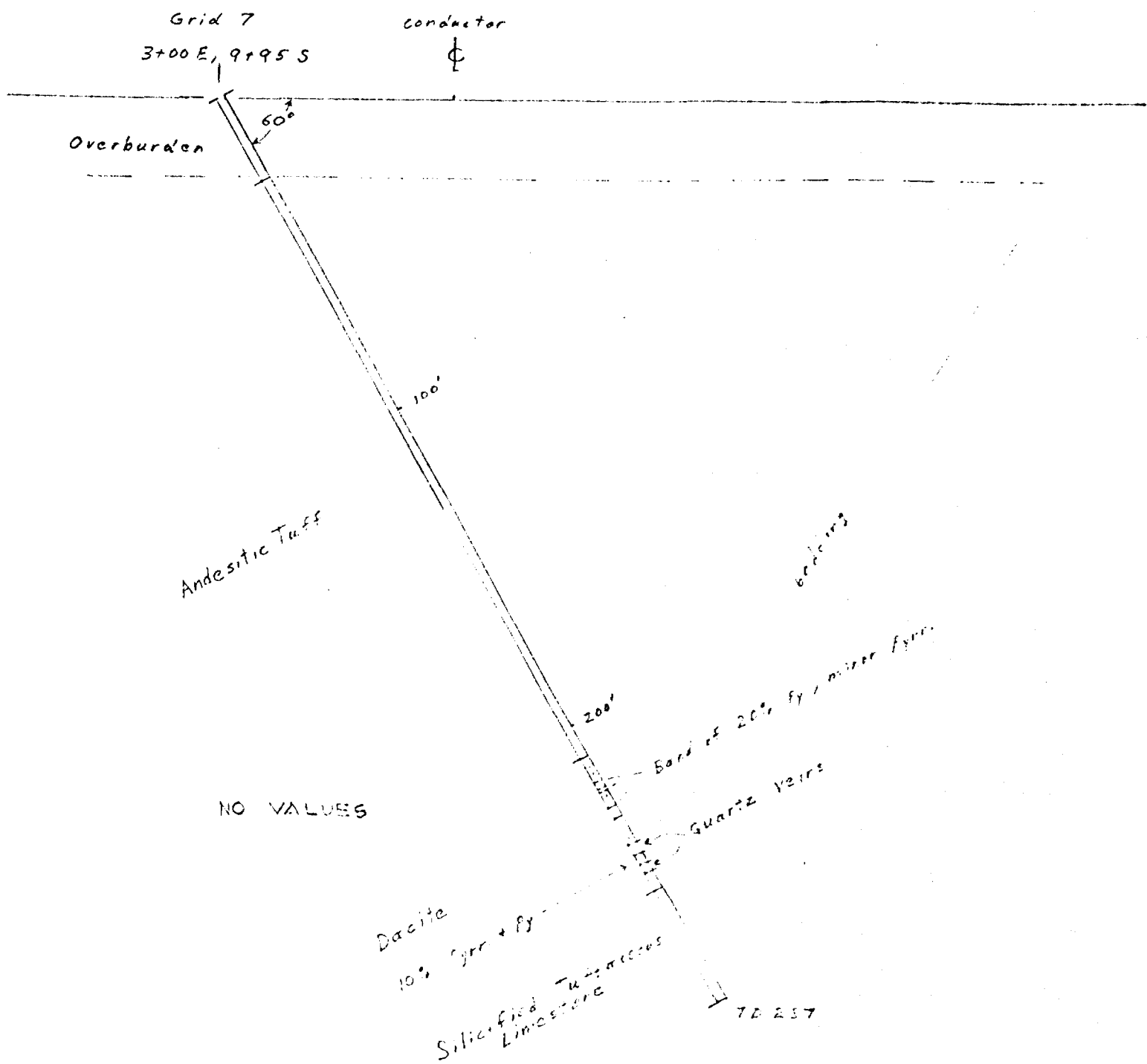


GRANGES EXPLORATION AB
 Cross Section SW 2
 Looking Grid East
 Scale 1" = 40', H.H.S.
 Feb. 11, 1977

LOCATION OF EACH
HOLE NO. SW-1
Scale 1"=400'

TOONS TWP.





FRANZES EXPLORATION CO
 Cross Section SW I
 Looking Grid East
 Scale 1" = 40', M.H.S
 Feb. 11, 1927

93.77

Belly
TOWNSHIP
LAKE

1852	P	P
451851	451853	451860
P	P	
451850	451854	451859
P	P	
451849	451855	451858
P	P	
451848	451856	451857

450985	450986	450987				450869	
450990	450989	450988				450875	
			P	P	P	P	P
			446631	446634	446635	446672	446673
			453966	453965	453967	453963	
			333366	333359	333367	333363	333376
451105	451106	451107	P	P	P	P	P
			446832	446833	446870	446871	446877
451110	451109	451108	333367	333358	453959	453960	
			453957	453958	333357	333352	333351
451111	451112	451115	451116	451117	451118	451119	451150
			451156	451155	451154	451153	451152
			451157	451158	451159	451160	451161
							451162
			451141	451140	451144	451165	451164
							451163
			451142	451143			

Greenlaw Twp. - M.895

EATEN
 GREEN
 LACES
 LOCATE
 LICENSE
 MINING
 SURFACE
 JOBS
 1980
 KING'S
 LAKE
 PULL
 1981

PLAV
 MINISTR

p. - M.781

Handwritten signature or mark