



41010NW0066 11 TOOMS

010

Diamond Drilling

Township of TOOMS

Report NO 11

Work performed by: INCO

Claim NO	Hole NO	Footage	Date	Note
S 145626	31960	401.0'	May/68	

Notes:

THE INTERNATIONAL NICKEL CO. OF CANADA, LIMITED

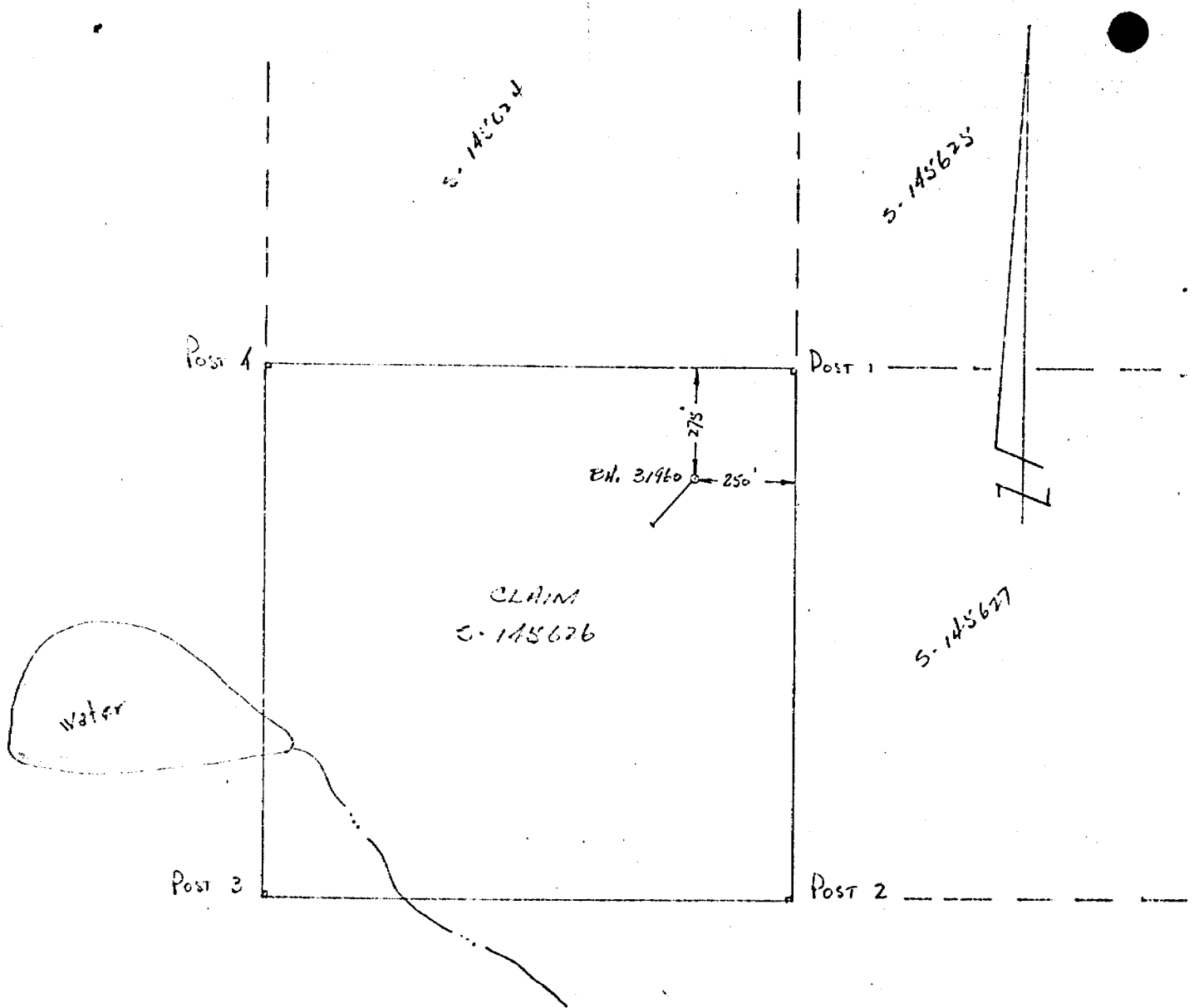
PROPER: ROBIN ANOMALY 831  
TOONS T.V.P.

## SAMPLING RECORD

SHEET NO. 4

HOLE NO. 3960 DEPTH 401.0 ANGLE S STRIKE ELEVATION 00200 1750N  
CO-ORDINATES

DEPTH FEET	FORMATION	SAMPLE NO.	LENGTH FT.	ANALYSIS			LENGTH FEET	PROGRESSIVE TOTALS			
				COPPER %	NICKEL %	CU. & NI. %		FEET X PER CENT			
				COPPER	NICKEL	CU. & NI.	COPPER	NICKEL	CU. & NI.		
0.0	Collar										
31.0	Mossing, ledge, sand, boulders										
32.0	Caseing, start of core										
103.0	Greenstone										
111.8	Tuffite										
121.2	Dabase?										
126.8	And. tuff										
161.8	Greenstone, tuffaceous										
172.2	Iron Formation, cherty quartz										
177.9	Tuffite										
203.2	Iron Formation										
261.1	Greenstone, andesitic										
263.3	Iron formation										
275.0	Andesite										
287.7	Iron formation										
385.7	Andesite										
397.1	Iron Formation										
401.0	Greenstone										
401.0	Foot of hole										
Data started MAY 25 1968							ACCU TESTS	Corrected			
Data completed MAY 28 1968							35	- 45.15			
Drilled by HEATH & SHERWOOD Drilling Ltd							135	- 44.15			
Logged by KENNEDY							235	- 43.45			
							335	- 43.15			
							400	- 42.45			
Dr. B. res. max. mil											
material left in hole - nil											
Size of core - AKT											



LOCATION SKETCH  
 of Bore Hole: 31960  
 LOCATED ON CL. S-145626  
 TOONS TOWNSHIP  
 SUDBURY MINING DIVISION  
 Scale: 1 inch = 400 ft