



41010NW0068 10 TOOMS

010

# Diamond Drilling

Township of TOOMS

Report No 10

Work performed by: Armac Securities Limited  
(Tooms Nickel Syndicate)

Claim No	Hole No	Footage	Date	Note
136461	T-1	239.0'	Aug/67	
	T-2	235.0'	Aug/67	
	T-3	385.0'	Aug/67	
	T-4	300.0'	Aug/67	
	T-5	341.0'	Aug/67	
	T-7	263.0'	Aug/67	
	T-8	316.0'	Aug/67	
	T-9	612.0'	Sept/67	
	136448	T-6	<u>310.0'</u>	Aug/67
		3001		

Notes:

# DIAMOND DRILL RECORD

PROPERTY Tooms Nickel Syndicate HOLE No. T1  
 SHEET NUMBER 1 SECTION FROM 0' TO 139.8' STARTED Aug. 2, 1967  
 LATITUDE 3 +32'S DATUM \_\_\_\_\_ COMPLETED Aug. 4, 1967  
 DEPARTURE 400E BEARING 003° A S T ULTIMATE DEPTH 239'  
 ELEVATION \_\_\_\_\_ DIP -46°, 110' -45°, 220' -46° PROPOSED DEPTH 235'

DEPTH FEET	FORMATION	SAMPLE NO.	FROM	TO	WIDTH	ASSAY VALUES			
						Au. Oz.	Cu. %	Zn. %	Ni. %
0'-101'	Casing								
101-115'	Tuff, light gray green, fine grain, medium hard sericitic bedding 70° to core few quartz carbonate stringers, minor chlorite, min. sparse to negative								
115-126.5'	Tuff, dark gray, peppered with white feldspars up to 1.5mm								
126.5-129.3'	Tuff, light gray green (as above)								
129.3-130.3'	Graphitic slate, dark bedding 80° to core, py. pyrhh. sphalerite, chalcopryrite, min. 5%	1	129.3	130.3	1.0	.005	.09	.38	.03
130.3-133.6'	Tuff, light gray green (as above)								
133.6-139.8'	Graphitic slate (as above)								
	min. 1% py. pyrhh. chalcopryrite min. 20%	2	135.0	138.2	3.2		.07		.02
	py pyrhh. chalcopryrite min. 8%	3	138.2	138.8	0.6	Tr	.13		.03
		4	138.8	140.0	1.2	.005	.02		.01

NORTHERN MINER FORM 908

DRILLED BY Canadian Longyear

SIGNED

R. Petersen

# DIAMOND DRILL RECORD

PROPERTY Tooms Nickel Syndicate HOLE No. T1  
 SHEET NUMBER 2 SECTION FROM 139.8' TO 239.0' STARTED Aug. 2, 1967.  
 LATITUDE \_\_\_\_\_ DATUM \_\_\_\_\_ COMPLETED Aug. 4, 1967.  
 DEPARTURE \_\_\_\_\_ BEARING \_\_\_\_\_ ULTIMATE DEPTH 239'  
 ELEVATION \_\_\_\_\_ DIP \_\_\_\_\_ PROPOSED DEPTH 235'

DEPTH FEET	FORMATION	SAMPLE NO.	FROM	TO	WIDTH	ASSAY VALUES			
						Au. Oz.	Cu. %	Zn. %	Ni. %
139.8-146.7'	Tuff, dark gray green, fine grain, hard bedding 50° to 60° to core, narrow cherty-bands -								
146.7-161.9'	Granite, light coloured, medium grain, hard, quartz, feldspar sericite, very minor mafic Min. negative								
161.9-166.9'	Slate, slightly graphitic, pyrrh. min. - 1%	5	164.2	165.0	0.8		.05		.01
169.9-182.0'	Tuff, light and dark gray green, parts banded, bedding 60° to 70° to core, min. negative								
182.0-239'	meta andesite, gray green, medium to coarse grain, minor qtz. carb. min. sparse to negative 193-194.5 dark, quite large biotite crystals 197.8-199.2 feldspar porphyry intrusive, dark gray, medium to fine grain, hard								
239'	End of hole								

NORTHERN MINER FORM 503

DRILLED BY

*L. Canadian Longyear*

SIGNED

*R. Petersen*

# DIAMOND DRILL RECORD

PROPERTY Tooms Nickel Syndicate HOLE No. T2  
 SHEET NUMBER One SECTION FROM 0' TO 116.4' STARTED Aug. 6, 1967.  
 LATITUDE 0+80's DATUM \_\_\_\_\_ COMPLETED Aug. 7, 1967  
 DEPARTURE 400E BEARING 003 AST ULTIMATE DEPTH 235'  
 ELEVATION \_\_\_\_\_ DIP -45°, 75' - 42°, 225' - 45° PROPOSED DEPTH \_\_\_\_\_

DEPTH FEET	FORMATION	SAMPLE NO.	FROM	TO	WIDTH	ASSAY VALUES		
						Au. Oz.	Cu. %	Ni %
0-50'	Casing							
50-87.8'	Meta andesite, gray green, medium to fine grain, medium hard, qtz. carb. min. negative shearing at 50° to core							
	64.2-67.4' Granite, dark gray, medium fine grain, contacts fairly sharp							
	75-82.5 sheared at 35° to core.							
87.8-101.1	Tuff, vari colored gray, fine grain, medium hard, carbonated, parts banded, biotite, bedding 60° to core min. negative							
101.1-103.8'	Tuff, graphitic, bedding 80° to core some contortion, qtz. pyrrh py. chalco., min. 2%+	6	101.2	103.8	2.6	Tr	.06	Tr
	101.75-102.05 micaceous lamprophyre							
103.8-116.4	Tuff, light gray green, fine grain, medium hard, carbonated bedding 55° to core							
	112.2-112.8 cherty banding							

NORTHERN MINER FORM 505

DRILLED BY

*Canadian Loggers*

SIGNED

*R. Peterson*

# DIAMOND DRILL RECORD

PROPERTY Tooms Nickel Syndicate HOLE No. T2  
 SHEET NUMBER 2 SECTION FROM 116.4 TO 146.7 STARTED Aug. 6, 1967  
 LATITUDE \_\_\_\_\_ DATUM \_\_\_\_\_ COMPLETED Aug. 7, 1967  
 DEPARTURE 400E BEARING 003 AST ULTIMATE DEPTH 235'  
 ELEVATION \_\_\_\_\_ DIP \_\_\_\_\_ PROPOSED DEPTH \_\_\_\_\_

DEPTH FEET	FORMATION	SAMPLE NO.	FROM	TO	WIDTH	ASSAY VALUES		
						Au. Oz.	Cu. %	Ni. %
116.4-122.5'	Sediment, banded, vari coloured gray, fine grain, medium hard bedding 60° to core.							
122.5-125.0'	Volcanic-(?) light gray green, sheared at 35° to core. min. negative							
125.0-127.6'	Tuff, graphitic, bedding 90° to core, qtz. pyrhn. py. chalcoppyrite min 10%	7	125.4	127.6	2.2	.005	.12	Tr
127.6-134.4'	Tuff, gray, fine grain, med. hard pyrite, pyrrhotite, min. 3% cubic pyrite, pyrrhotite, min. 2%	8 9	127.6	130.0	2.4	Tr	.07	.01
130.0-134.4'			130.0	134.4	4.4	Tr		.02
134.4-138.8'	Basic, dark, medium grain, medium hard, min. negative							
136.7-138.7'	chloritic, cubic pyrite, min. 2%	10	136.7	138.7	1.0	Tr		.04
137.0-137.7'	Diorite, min. neg.							
138.7'	.1' mud seam							
138.8-145.4'	Peridotite, bleached talcose, gray, medium coarse grain, soft min. sparse to negative.							
145.5-146.7'	Volcanic, green, fine grain							

NORTHERN MINER FORM 505 REV. 54

DRILLED BY \_\_\_\_\_

SIGNED \_\_\_\_\_

# DIAMOND DRILL RECORD

PROPERTY Tooms Nickel Syndicate HOLE No. T2  
 SHEET NUMBER 3 SECTION FROM 146.7 TO 235' STARTED Aug. 6, 1967  
 LATITUDE \_\_\_\_\_ DATUM \_\_\_\_\_ COMPLETED Aug. 7, 1967  
 DEPARTURE \_\_\_\_\_ BEARING \_\_\_\_\_ ULTIMATE DEPTH 235'  
 ELEVATION \_\_\_\_\_ DIP \_\_\_\_\_ PROPOSED DEPTH \_\_\_\_\_

DEPTH FEET	FORMATION	SAMPLE NO.	FROM	TO	WIDTH	ASSAY VALUES		
						Au. Oz.	Cy. $\frac{3}{8}$	Ni. $\frac{1}{8}$
146.7-150.2'	Sediment (?) black, fine grain, med. hard, min. negative							
150.2 -235.0'	Peridotite bleached, talcose (as above) some qtz. carb.							
	208.5-215' light green, med. grain, hard pyrrhotite, min. - $\frac{1}{8}$ % 11		210.0	215.0	5.0			.29
	215-224 dark gray, min. negative							
235'	End of hole							

NORTHERN MINER FORM 505

DRILLED BY \_\_\_\_\_ SIGNED \_\_\_\_\_

# DIAMOND DRILL RECORD

PROPERTY Tooms Nickel Syndicate HOLE No. 73  
 SHEET NUMBER 1 SECTION FROM 0 TO 193.0' STARTED Aug. 9, 1967  
 LATITUDE 4+90's DATUM \_\_\_\_\_ COMPLETED Aug. 12, 1967.  
 DEPARTURE 400W BEARING 003 AST ULTIMATE DEPTH 385'  
 ELEVATION \_\_\_\_\_ DIP -51°, 100' -49°, 300', -49° PROPOSED DEPTH 360'

DEPTH FEET	FORMATION	SAMPLE NO.	FROM	TO	WIDTH	ASSAY VALUES			
0-40'	Casing								
40-68.3'	Tuff, light to dark green, fine grain, hard bedding 95° to core min.								
68.3-95.0'	sparse to negative 65.9-68.3' agglomerate Sediment, gray green, med. to fine grain, hard, bedding 50° to 60°, numerous minute white feldspars metacryst								
95.0-182.3'	Trachyte (?) flow, light gray green, fine grain, hard, foliation 55° to core, minor Qtz. carb. min. sparse to negative.								
	109.8-114.3' cherty, siliceous 111.1-112.5' lamprophyre, micaceous								
	128.4-128.8 Diarite, dark, med. to fine grained, hard, min. neg. 130.8-134.3' diarite (as above)								
	From 159' a gradual change to an andesitic flow, dark green, foliation 50° to core								
182.3-193.0'	Sediment, banded, gray, fine grain, hard bedding 50° to core conspicuous small white feldspar metacryst to 188'								

NORTHERN MINER FORM 508 REV. 65

DRILLED BY

*Canadian Longyear*

SIGNED

*R. T. Jensen*

# DIAMOND DRILL RECORD

PROPERTY Tooms Nickel Syndicate HOLE No. 13  
 SHEET NUMBER 2 SECTION FROM 193.0 TO 252.6 STARTED Aug. 8, 1967.  
 LATITUDE \_\_\_\_\_ DATUM \_\_\_\_\_ COMPLETED Aug. 12, 1967  
 DEPARTURE \_\_\_\_\_ BEARING \_\_\_\_\_ ULTIMATE DEPTH 395'  
 ELEVATION \_\_\_\_\_ DIP \_\_\_\_\_ PROPOSED DEPTH 350'

DEPTH FEET	FORMATION	SAMPLE NO.	FROM	TO	WIDTH	ASSAY VALUES		
						Au. Oz.	Cu. %	Ni. %
	188-193' green, fine grain, hard, bedding 60° to core							
193-201.2'	Granite, light colored, med. grain, hard, qtz. feldspar, sericite, very minor mafics.							
201.2-204.0	Volcanic, gray, fine grain, hard, minor, sericite							
204.-217.0'	Tuff, gray, fine grain, hard, numerous white feldspar metacryst, min. sparse							
217.0-223.9'	Sediment, banded, variable, gray, fine grain, med. hard bedding 50° to core white feldspar metacryst to 221' gradually diminishing, pyrite, pyrrhotite, min. 2%	12	222.3	223.9	1.6	Nil		.01
223.9-225.6	Slate, graphitic, bedding 60° to core pyrrhotite, pyrite min. 2%	13	223.9	225.6	1.7	Tr	.04	.02
225.6-230.3	Tuff, gray							
230.3-252.6'	Tuff and slate interbedded, barren except for 0,15' of near massive pyrrhotite at 252.4'							

NORTHERN MINER FORM 508 REV/64

DRILLED BY \_\_\_\_\_

CREWED \_\_\_\_\_



# DIAMOND DRILL RECORD

PROPERTY Toons Nickel Syndicate HOLE No. 23  
 SHEET NUMBER 3 SECTION FROM 252.6 TO 383 STARTED Aug. 9, 1967  
 LATITUDE \_\_\_\_\_ DATUM \_\_\_\_\_ COMPLETED Aug. 12, 1967  
 DEPARTURE \_\_\_\_\_ BEARING \_\_\_\_\_ ULTIMATE DEPTH 385'  
 ELEVATION \_\_\_\_\_ DIP \_\_\_\_\_ PROPOSED DEPTH 360'

DEPTH FEET	FORMATION	SAMPLE NO.	FROM	TO	WIDTH	ASSAY VALUES		
						Au. Oz.	Cu. %	Ni. %
232.6-248.0'	Sediment, parts banded, variable gray, fine grain, med. hard, minor qtz. carb. min. negative.							
241.5-248	chloritic, bedding 60° to core							
242.3-244.6	low angle contortions							
248.0-275.5'	Sediment, arkosic, contains about 20% vein qtz., pyrite min. in qtz. -2%							
275.5-316.7'	Rhyolite, quartz, siliceous							
305-316.7	siliceous, pyrite in smears and cubes 5%	14	310.0	316.7	6.7	Tr		
316.7-327.8	Sediment, banded, biotitic, variable gray med. fine grain, med. hard, irregular qtz. carb. min. sparse to negative.							
327.8-343.5	Rhyolite (as above)							
343.5-383'	Meta andesite, much altered, dark gray, med. to coarse grain, med. soft, slightly talcose, min. sparse to negative							
364.1-366.5	Lost core							
383'	End of hole							

# DIAMOND DRILL RECORD

PROPERTY Tooms Nickel Syndicate HOLE No. 74  
 SHEET NUMBER 1 SECTION FROM 0 TO 170.3 STARTED August 14, 1967  
 LATITUDE 1 + 60'S DATUM \_\_\_\_\_ COMPLETED Aug. 16, 1967.  
 DEPARTURE 400W BEARING 003 AST ULTIMATE DEPTH 300'  
 ELEVATION \_\_\_\_\_ DIP -60°, 100' - 58°, 250' - 58° PROPOSED DEPTH \_\_\_\_\_

DEPTH FEET	FORMATION	SAMPLE NO.	FROM	TO	WIDTH	ASSAY VALUES			
						Au. Oz.	Cu. %		Ni. %
0-6'	Casing								
6-13.7'	Diabase, gray brown, med. grain, hard, min. negative								
13.7-67.4	Meta andesite, gray green, med. to fine grain, hard, pyrrhotite, chalcopyrite, sparse dissemination.								
67.4-127.5	Andesite, gray green, fine grain, med. hard, sparse disseminated pyrrh. chalcc. mineralization								
105.0-113.0	sheared at 45° to core sericitic								
127.5-154.5	Tuff, gray green, med. to fine grain, med. soft, bedding 40° to 50° to core Qtz. carb., min. sparse to negative								
150.0-154.5	fragmental								
154.5-157.5	Slaty, chloritic, bedding 60° to core pyrrhotite, pyrite, min. sparse to 1%								
157.5-159.7	Silicified (min. as above) min. -1%	15	155.0	160.0	5.0	Tr	.08		Tr
159.7-170.3	Tuff, gray green, fine grain, medium hard, fragmental, thin chloritic beds, bedding 60° to core min. sparse								

NORTHERN MINER FORM 505 REV/54

DRILLED BY

*Canadian Longyear*

SIGNED

*R. Petersen*

# DIAMOND DRILL RECORD

PROPERTY Tooms Nickel Syndicate HOLE No. 14  
 SHEET NUMBER 2 SECTION FROM 170.3 TO 224.9 STARTED Aug. 14, 1967  
 LATITUDE \_\_\_\_\_ DATUM \_\_\_\_\_ COMPLETED Aug. 16, 1967.  
 DEPARTURE \_\_\_\_\_ BEARING \_\_\_\_\_ ULTIMATE DEPTH 300'  
 ELEVATION \_\_\_\_\_ DIP -60°, 100°-58°, 250°-58° PROPOSED DEPTH \_\_\_\_\_

DEPTH FEET	FORMATION	SAMPLE NO.	FROM	TO	WIDTH	ASSAY VALUES			
						Au. Oz.	Cu. %		Ni. %
170.3-182.3	Peridotite, bleached, serpen- tinized, talcose, gray, med. grain, soft cubic pyrite,								
182.3-187.0	min. -2% Tuff(?) altered gray, carb at 50' to core min. sparse to neg.	16	175.0	180.0	5.0	Nil			.08
187.0-202.2	Tuff, silicified, gray, Partly buff colored, fine grained, hard pyrrhotite, pyrite, specks chalcopyrite, min. 5%*	17	187.0	188.4	1.4	Nil	.06		.66
1	188.5-191.1 greenstone, gray green, fine grain hard, Qtz. carb. filled fracturing min. negative pyrrhotite, pyrite, specks chalco min. -5% pyrrhotite, pyrite, specks	18	191.3	195.0	3.7	Tr	.10		.50
202.2-213.2	chalco min. 3% Quartz feldspar, vari-colored greenish to buff, fine grain, hard, min. sparse to 1%	19	195.0	200.0	5.0	Nil	.07		.28
213.2-218.0	Feldspathized, fragmental 213.3-213.8 dyke, dark, fine grain								
218.0-224.9	Peridotite, bleached, talcose, min. sparse to negative								
	224.9-228 lost core								

NORTHERN MINER FORM 505 REV./54

DRILLED BY \_\_\_\_\_

SIGNED \_\_\_\_\_

# DIAMOND DRILL RECORD

PROPERTY Tooms Nickel Syndicate HOLE No. 74  
 SHEET NUMBER 3 SECTION FROM 224.9' TO 300' STARTED Aug. 14, 1967  
 LATITUDE \_\_\_\_\_ DATUM \_\_\_\_\_ COMPLETED Aug. 16, 1967  
 DEPARTURE \_\_\_\_\_ BEARING \_\_\_\_\_ ULTIMATE DEPTH 300'  
 ELEVATION \_\_\_\_\_ DIP -60°, 100°-58°, 250°-58° PROPOSED DEPTH \_\_\_\_\_

DEPTH FEET	FORMATION	SAMPLE NO.	FROM	TO	WIDTH	ASSAY VALUES		
						Au. Oz.	Cu. %	Ni. %
	228.0-243.5 Fault zone 11.4' lost core							
243.5-263.3	Interbedded gray sediment and slate color gray-black, med. fine grain, hard, bedding 70° to contorted, some at very low angles to core							
	Pyrite, pyrrhotite, chalcopyrite, Min. 5%+	20	243.6	253.8	5.2	N11	.11	.02
	cut by siliceous, granitic material at 238.4-239.4, 254.0-257.3, 260.2-260.8, 261.4-263.3							
263.3-268.0	Tuff, altered, gray, med. grain med. soft. min. sparse							
268.0-300.0	Peridotite, bleached, serpentinized, talcose, gray, med. grain, med. soft, carbonated, min. sparse to negative.							
300'	End of hole							

NORTHERN MINER FORM 909 REV./64

DRILLED BY \_\_\_\_\_

SIGNED \_\_\_\_\_

# DIAMOND DRILL RECORD

PROPERTY Toons Nickel Syndicate HOLE No. 15  
 SHEET NUMBER 1 SECTION FROM 0' TO 218.0' STARTED Aug 17, 1967  
 LATITUDE 15+00's DATUM \_\_\_\_\_ COMPLETED Aug. 19, 1967  
 DEPARTURE 3200W BEARING 183° AST ULTIMATE DEPTH 341'  
 ELEVATION \_\_\_\_\_ DIP -55°, 100' -46°, 300' -45° PROPOSED DEPTH 360'

DEPTH FEET	FORMATION	SAMPLE NO.	FROM	TO	WIDTH	ASSAY VALUES			
						Au. Oz.	Cu. %	Zn. %	Ni. %
0-98	Casing								
98.0-155.7	Meta andesite, dark green, med. grain, hard, min. sparse to negative 93.5' sheared at 35° to core 100' foliation 65° to core Leucoxene qtz. carb. 125.5 lighter green, fairly fresh, minor qtz. carb. min. neg. 143' considerable alteration, feldspathic, qtz. carb. chlorite 148' amphibole alteration, minor qtz. carb. 155.7 much feldspathic alteration								
155.7-159.8	Sediment, altered, bedding remnant at 45° to core chert, chlorite, biotite, epidote pyrite, pyrrhotite, chalcopyrite min. 10%+								
159.8-205.8	Meta andesite (as above) 166.4-205.8 amphibole alteration 189-189.8 Lamprophyre, micaceous	21	156.8	159.8	3.0	Tr	.45		.05
205.8-218.0	Rhyolite (?) granular, gray, fine grain, hard, foliated, min. sparse to well Pyrrh. pyrite, sphalerite, chalco	22	210.0	215.0	4.4	N11	.05	.79	Tr

NORTHERN MINER FORM 502 REV. 54

pyrite, min. -5.5

DRILLED BY

*Canadian Longyear*

SIGNED

*R. Petersen*

# DIAMOND DRILL RECORD

PROPERTY Tooms Nickel Syndicate HOLE No. 15  
 SHEET NUMBER 2 SECTION FROM 215.0' TO 341' STARTED Aug. 17, 1967  
 LATITUDE \_\_\_\_\_ DATUM \_\_\_\_\_ COMPLETED Aug. 19, 1967  
 DEPARTURE \_\_\_\_\_ BEARING \_\_\_\_\_ ULTIMATE DEPTH 341'  
 ELEVATION \_\_\_\_\_ DIP \_\_\_\_\_ PROPOSED DEPTH 360'

DEPTH FEET	FORMATION	SAMPLE NO.	FROM	TO	WIDTH	ASSAY VALUES			
						Au. Oz.	Cu. %	Zn. %	Ni. %
218.0-227.5	Tuff, graphitic, gray and slate interbedded fine grain bedding 45° to core, parts contorted, min. well -								
	pyrrh, pyrite, chalcopyrite, min. 10%+	23	218.1	222.4	4.3	Tr	.14	.43	Tr
227.5-244.0	222.4-227.5 banded, min. 1% ± Rhyolite (?) (as above)								
	Pyrrhotite, pyrite, specks chalcopyrite, min. 8%	24	234.4	237.6	3.2		.04		.01
	Pyrrhotite, pyrite, specks chalcopyrite, min. 4%	25	240.6	244.0	3.4		.02		.01
244.0-261.3	Tuff, dacitic, light gray green fine grain, hard, bedding nearly parallel to core min. sparse								
261.3-267.7	Lamprophyre (?) gray, med. grain, hard, both contacts sharp at 85° to core								
267.7-341.0	Tuff, banded, dacitic, vari-colored, fine grain, hard, feldspathic to cherty, alterations, bedding varies from 35° to 60° to core pyrrhotite min. sparse								
	323.8-327.8 Lamprophyre (as above) Lower contact at 20° to core								
341'	End of hole								

NORTHERN MINER FORM 505 REV./84

DRILLED BY \_\_\_\_\_

SIGNED \_\_\_\_\_

# DIAMOND DRILL RECORD

PROPERTY Tooms Nickel Syndicate HOLE No. T6  
 SHEET NUMBER 1 SECTION FROM 0' TO 310.0' STARTED August 22, 1967  
 LATITUDE 14+00'N DATUM \_\_\_\_\_ COMPLETED August 24, 1967  
 DEPARTURE 1600E BEARING 003° Ast. ULTIMATE DEPTH 310'  
 ELEVATION \_\_\_\_\_ DIP -50°, 100' -51°, 250' -48° PROPOSED DEPTH 300'

DEPTH FEET	FORMATION	SAMPLE NO.	FROM	TO	WIDTH	ASSAY VALUES			
						Au. Oz.	Cu. %	Zn. %	Ni. %
0-50'	Casing								
50-310.0'	Peridotite, serpentized, dark med. grain, variable hardness, considerable alteration, jointing extensive, ranging from 20° to 75° to core, all coated with various products of alterations, white carbonate or talc to deep vivid green serpentine, magnetite both disseminated and concentrated on joints, from sparse to 10% pyrite min. very sparse								
	105'-180' alteration intense, magnetite up to 10%, leaching widespread narrow open water channels, low angle jointing decreasing magnetite min. 10%±	44	135.0	140.0	5.0				.24
	from 180.0' gradual decrease in alteration magnetite min. sparse to negative, a little hematite noted at 205' and 220'								
	from 225.0' not much jointing								
	246.3-248.0 intrusive granite								
	light colored medium to coarse grain.								

NORTHERN MINER FORM 505

DRILLED BY Canadian Longyear SIGNED (signed) R. Peterson

# DIAMOND DRILL RECORD

PROPERTY Tooms Nickel Syndicate HOLE No. T6  
 SHEET NUMBER 2 SECTION FROM 310.0' TO \_\_\_\_\_ STARTED August 22, 1967  
 LATITUDE \_\_\_\_\_ DATUM \_\_\_\_\_ COMPLETED August 24, 1967  
 DEPARTURE \_\_\_\_\_ BEARING \_\_\_\_\_ ULTIMATE DEPTH 310'  
 ELEVATION \_\_\_\_\_ DIP \_\_\_\_\_ PROPOSED DEPTH 300'

DEPTH FEET	FORMATION	SAMPLE NO.	FROM	TO	WIDTH	ASSAY VALUES			
	262.7-265.0' intrusive (as above)								
	285.0-300' a slight increase in alteration								
	290' 5° slip.								
310.0	End of hole								

NORTHERN MINER FORM 508

DRILLED BY Canadian Longyear SIGNED (signed) R. Peterson



# DIAMOND DRILL RECORD

PROPERTY Tooms Nickel Syndicate HOLE No. T7  
 SHEET NUMBER 1 SECTION FROM 0' TO 140.2' STARTED August 26, 1967  
 LATITUDE 1+70'S DATUM \_\_\_\_\_ COMPLETED August 27, 1967  
 DEPARTURE 100E BEARING 003° Ast. ULTIMATE DEPTH 263'  
 ELEVATION \_\_\_\_\_ DIP -49°, 100' -47°, 250' -44° PROPOSED DEPTH \_\_\_\_\_

DEPTH FEET	FORMATION	SAMPLE NO.	FROM	TO	WIDTH	ASSAY VALUES			
						Au. Oz.	Cu. %	Zn. %	Ni. %
0-3'	Casing								
3-129.5'	Meta andesite, light gray green, med. grain, hard, amphibole development, minor qtz. carb. min. sparse to negative								
	64.5'-87.5' tuff(?) biotite, dark gray green, sheared at 30° to 45° to core, qtz. carb. stringers and veins from 0.1' to 1.1', minor chlorite								
	107.5'-113.5' amphibole alteration								
	118.1-127.4' sheared, chloritized, min. sparse								
	127.4-129.5' contact zone, dark, chloritized sheared at 50° to core								
129.5-140.2	Sediment, slaty (tuff) dark green, fine grain, med. soft bedding 55° to core, some contortion, qtz. chlorite, min. sparse to 2%								
	pyrite, chalcopyrite, pyrrothite, min. -3%	46	130.5	140.0	9.5		.16		Tr
	135.2-135.9' quartz granular								

NORTHERN MINER FORM 508

DRILLED BY Canadian Longyear

SIGNED (signed) R. Peterson

# DIAMOND DRILL RECORD

PROPERTY Tooms Nickel Syndicate HOLE No. T7  
 SHEET NUMBER 2 SECTION FROM 140.2 TO 186.3 STARTED August 26, 1967  
 LATITUDE \_\_\_\_\_ DATUM \_\_\_\_\_ COMPLETED August 27, 1967  
 DEPARTURE \_\_\_\_\_ BEARING \_\_\_\_\_ ULTIMATE DEPTH 263'  
 ELEVATION \_\_\_\_\_ DIP \_\_\_\_\_ PROPOSED DEPTH \_\_\_\_\_

DEPTH FEET	FORMATION	SAMPLE NO.	FROM	TO	WIDTH	ASSAY VALUES			
						Au. Oz.	Cu. %	Zn. %	Ni. %
140.2-145.5	Tuff, dark gray, fragmental, med. hard bedding 45°-50° to core, qtz. carb. chalcopryrite, specks pyrrhotite, min. 5%	26	140.0	145.5	5.5		.43		Tr
145.5-151.8	Greenstone, dark gray, med. to fine grain, hard, minor qtz. carb. chlorite upper and lower contact 60° to core min. sparse to negative								
151.8-159.0	Tuff, gray, fragmental (as above) chalcopryrite, minor pyrrhotite, min. 10%	27	151.8	155.0	3.2		.61		Tr
	chalcopryrite, minor pyrrhotite min. 5%	28	155.0	160.0	5.0		.30		Tr
	chalcopryrite, minor pyrrhotite min. 3%	29	160.0	165.0	5.0		.22		Tr
	pyrrhotite, chalcopryrite, min. 2%	30	165.0	170.0	5.0		.14		.01
169.0-179.4	Banded tuff, bedding 55°-60° to core, pyrrhotite, chalcopryrite, min. 3%	31	170.0	175.0	5.0		.43		.01
	pyrrhotite, chalcopryrite, min. 5%	32	175.0	180.0	5.0		.19		.15
179.4-186.3	Cherty, light green pyrrhotite, chalcopryrite, min. 5%	33	180.0	185.0	5.0		.13		.39

NORTHERN MINER FORM 503

DRILLED BY Canadian Longyear SIGNED (signed) R. Peterson

# DIAMOND DRILL RECORD

PROPERTY Tooms Nickel Syndicate HOLE No. T7  
 SHEET NUMBER 3 SECTION FROM 186.3 TO 263.0' STARTED August 26, 1967  
 LATITUDE \_\_\_\_\_ DATUM \_\_\_\_\_ COMPLETED August 27, 1967  
 DEPARTURE \_\_\_\_\_ BEARING \_\_\_\_\_ ULTIMATE DEPTH 263'  
 ELEVATION \_\_\_\_\_ DIP \_\_\_\_\_ PROPOSED DEPTH \_\_\_\_\_

DEPTH FEET	FORMATION	SAMPLE NO.	FROM	TO	WIDTH	ASSAY VALUES			
						Au. Oz.	Cu. %	Zn. %	Ni. %
186.3-206.1'	Greenstone, partly bedded, light gray green, fine grain, hard, bedding remnants 80° to core, considerable "dark spots" alteration pyrrhotite, chalcopryrite, pyrite, min. 2%	34	185.0	190.0	5.0		.05		.70
	pyrrhotite, chalcopryrite, pyrite min. 3%	47	190.0	194.0	4.0		.07		.11
		48	194.0	199.0	5.0		.06		.15
		49	199.0	206.0	7.0		.06		.16
206.1-258.0'	Greenstone, tuff, agglomerate, med. to dark green, fine grain, hard, some chlorite and feldspathic alteration, min. sparse to negative 228' contact at 55° to core.								
	232' contact at 45° to core								
	239.4-240.8 sheared at 85° to core								
	240.8-255.5 feldspathic layers, mottling								
	255.5-258.0' development of talc								
258.0-263.0	Peridotite, bleached, serpentinized, talcose.								

NORTHERN MINER FORM 505

DRILLED BY Canadian Longyear SIGNED (signed) R. Peterson

# DIAMOND DRILL RECORD

PROPERTY Tooms Nickel Syndicate HOLE No. T8  
 SHEET NUMBER 1 SECTION FROM 0 TO 209.5' STARTED August 28, 1967  
 LATITUDE 2+00 S DATUM \_\_\_\_\_ COMPLETED August 30, 1967  
 DEPARTURE 200 E. BEARING 003° Ast. ULTIMATE DEPTH 316'  
 ELEVATION \_\_\_\_\_ DIP -61°, 100' -65°, 250' -65° PROPOSED DEPTH \_\_\_\_\_

DEPTH FEET	FORMATION	SAMPLE NO.	FROM	TO	WIDTH	ASSAY VALUES			
						Au. Oz.	Cu. %	Zn. %	Ni. %
0-33'	Casing								
33-187.8'	Meta andesite, light gray green, med. grain, hard, minor qtz. carb. occasional epidote, min. sparse								
46'-48.6'	Lamprophyre, biotite to 3 mm, med. grain, hard, min. negative								
148.8-153.9	dark fine grain dyke (?) med. grain, hard, min. sparse								
175.5-176.9	Slaty tuff inclusion, bedding 55° to core, qtz. carb.								
187.8-192.4	Tuff, slaty, dark, fine grain, med. hard bedding 55° to core 2%+ pyrite, pyrrhotite, min. 2-3%	50	188.2	190.0	1.8		.05		.02
	pyrite, pyrrhotite, min. -1%	51	190.0	192.4	2.4		.10		Tr
192.4-197.8	Greenstone, dark gray green fine to med. grain, hard, chlorite, qtz. carb. pyrite min. sparse	52	192.4	197.8	5.4		.02		Tr
197.8-209.5	Tuff, slaty (as above) graphitic slip at 200', min. sparse to 1%	53	197.8	209.5	11.7		.06		Tr

NORTHERN MINER FORM 505

DRILLED BY Canadian Longyear SIGNED (signed) R. Peterson

# DIAMOND DRILL RECORD

PROPERTY Tooms Nickel Syndicate HOLE No. T8  
 SHEET NUMBER 2 SECTION FROM 209.5' TO 259.0' STARTED August 28, 1967  
 LATITUDE \_\_\_\_\_ DATUM \_\_\_\_\_ COMPLETED August 30, 1967  
 DEPARTURE \_\_\_\_\_ BEARING \_\_\_\_\_ ULTIMATE DEPTH 316'  
 ELEVATION \_\_\_\_\_ DIP \_\_\_\_\_ PROPOSED DEPTH \_\_\_\_\_

DEPTH FEET	FORMATION	SAMPLE NO.	FROM	TO	WIDTH	ASSAY VALUES			
						Au. Oz.	Cu. %	Zn. %	Ni. %
209.5-221.1'	Tuff, gray, fragmental, med. hard fine grain biotite throughout bedding 55° to core								
	chalcopryrite, minor pyrrhotite, min. 15%	35	209.5	215.0	5.5		.49		.01
	chalcopryrite, minor pyrrhotite, min. 10%	36	215.0	221.2	6.2		.42		Tr
221.1-222.6	Greenstone (as above)								
222.6-231.5	Tuff, fragmental, biotitic (as above)								
	chalcopryrite, minor pyrrhotite, min. 2%	37	222.8	225.0	2.2		.20		Nil
		38	225.0	231.1	6.1		.18		Tr
231.3-232.0	Greenstone (as above) contact 45°-50° to core								
232.0-239.5	Tuff(?) gray, green, fine grain, hard chalcopryrite, pyrrhotite, min. 2%	39	232.0	235.0	3.0		.11		Tr
	slip with pentlandite, chalco. pyrrh. mag. min. 2%	40	235.0	240.0	5.0		.05		Nil
239.5-245.3'	Rhyolite, cherty, light gray green, gradational contact, mag. pyrrh. py. chalco. min. 2%	41	240.0	242.8	2.8		.07		Tr
	Mag. pyrrh. py. chalco. min. 1%	42	242.8	245.0	2.2		.04		Tr
245.3-259.0'	Banded sediment, vari-colored, fine grain, med. soft, folded,								

NORTHERN MINER FORM 505

DRILLED BY Canadian Longyear SIGNED (signed) R. Peterson

# DIAMOND DRILL RECORD

PROPERTY Tooms Nickel Syndicate HOLE No. T8  
 SHEET NUMBER 3 SECTION FROM 259.0' TO 287.0 STARTED August 28, 1967  
 LATITUDE \_\_\_\_\_ DATUM \_\_\_\_\_ COMPLETED August 30, 1967  
 DEPARTURE \_\_\_\_\_ BEARING \_\_\_\_\_ ULTIMATE DEPTH 316'  
 ELEVATION \_\_\_\_\_ DIP \_\_\_\_\_ PROPOSED DEPTH \_\_\_\_\_

DEPTH FEET	FORMATION	SAMPLE NO.	FROM	TO	WIDTH	ASSAY VALUES			
						Au. Oz.	Cu. %	Zn. %	Ni. %
	light and dark layers, well bedded at 45° to core, min. sparse								
	247.0' slip at 20° to core.								
	248.9-249.3' qtz. veinlet, sphalerite, chalcopryrite								
	251.0' slip at 20° to core, min. 1%	54	250.1	251.25	1.15		.10		.01
	252' garnets pyrrh. py. sphalerite chalco. min. 5%	55	254.1	260.0	5.9		.11	.43	.16
259.0-287.0'	Tuffaceous, vary-colored, fine grain, parts fragmental, med. soft bedding range from 30° to 70° to core, qtz. carb. chlorite biotite, pentlandite, pyrite, pyrrh. chalcopryrite pentlandite, pyrite, pyrr. chalcopryrite, min. 5%								
	pyrite, pyrrh., chalcopryrite min. 5%	56	260.0	265.0	5.0		.08		.21
	pyrite, pyrrh., chalcopryrite min. 3%	43	265.0	270.0	5.0		.11		.85
	pyrite, pyrrh., chalcopryrite, min. 3%	57	270.0	276.3	6.3		.06		.17
	pyrrhotite, pyrite, min. 5%	58	276.3	282.0	5.7		.08		.10
		59	282.0	283.0	1.0		.10		.62

NORTHERN MINER FORM 508

DRILLED BY Canadian Longyear SIGNED (signed) R. Peterson

# DIAMOND DRILL RECORD

PROPERTY Tooms Nickel Syndicate HOLE No. T8  
 SHEET NUMBER 4 SECTION FROM 287.0 TO 316.0 STARTED August 28, 1967  
 LATITUDE..... DATUM..... COMPLETED August 30, 1967  
 DEPARTURE..... BEARING..... ULTIMATE DEPTH 316'  
 ELEVATION..... DIP..... PROPOSED DEPTH.....

DEPTH FEET	FORMATION	SAMPLE NO.	FROM	TO	WIDTH	ASSAY VALUES			
						Au. Oz.	Cu. %	Zn. %	Ni. %
287.0-316.0	Peridotite, gray, med. grain, soft, bleached, talcose, min. sparse to negative								
	cubic pyrite(?)	60	303.2	205.0	1.8		.02		.07
	cubic pyrite	61	308.1	309.2	1.1		.01		.07
316.0	End of hole								

NORTHERN MINER FORM 505

DRILLED BY Canadian Longyear SIGNED (signed) R. Peterson

# DIAMOND DRILL RECORD

PROPERTY Tooms Nickel Syndicate HOLE No. T9  
 SHEET NUMBER 1 SECTION FROM 0 TO 180.9' STARTED September 12, 1967  
 LATITUDE 4+35'S DATUM \_\_\_\_\_ COMPLETED September 17, 1967  
 DEPARTURE 200E BEARING 003° Ast ULTIMATE DEPTH 612.0'  
 ELEVATION \_\_\_\_\_ DIP -68°, 100' -60°, 300' -450' - PROPOSED DEPTH 600' -60°

DEPTH FEET	FORMATION	SAMPLE NO.	FROM	TO	WIDTH	ASSAY VALUES			
0-82'	Casing								
82-145.3	Alternate bands of sediment, grit and agglomerate								
	82-87' sediment, dark gray green, med. to fine grain, hard, bedding 65° to core, minor qtz. carb. min. sparse to negative								
	87'-90.4 agglomerate, variable green, light colored feldspathic material elongated or banded, bedding 70° to core.								
	90.4-91.9 grit, gray, med. grain, hard, fairly massive, qtz. feldspar and biotite, min. sparse to negative								
	-106.2' sediment (as above)								
	-107.8 agglomerate (as above)								
	107.8-113.3 Grit (as above)								
	10° fracturing black chlorite or quartz filling								
	-118.3 agglomerate (as above)								
	-123.6 Grit (as above)								
	-129.0 Sediment (as above)								
	-131.8 Grit (as above)								
	-145.3 Sediment (as above)								
145.3-180.9'	Tuff, dark to light green, fine grain, med. hard, bedding 50° to 55° to core								

NORTHERN MINER FORM 505

DRILLED BY Canadian Longyear

SIGNED R. Peterson



# DIAMOND DRILL RECORD

PROPERTY Tooms Nickel Syndicate HOLE No. T9  
 SHEET NUMBER 2 SECTION FROM 180.9 TO 232.3 STARTED September 12, 1967  
 LATITUDE \_\_\_\_\_ DATUM \_\_\_\_\_ COMPLETED September 17, 1967  
 DEPARTURE \_\_\_\_\_ BEARING \_\_\_\_\_ ULTIMATE DEPTH 612.0'  
 ELEVATION \_\_\_\_\_ DIP \_\_\_\_\_ PROPOSED DEPTH \_\_\_\_\_

DEPTH FEET	FORMATION	SAMPLE NO.	FROM	TO	WIDTH	ASSAY VALUES			
						Au. Oz.	Cu. %	Zn. %	Ni. %
180.9-192.2	Tuff, bleached, fine grain, med. hard pyrrh., pyrite, chalco, sphalerite, molly., min. 1%								
192.2-196.9'	Tuff, interbedded gray, slaty and graphitic, bedding from 50° to 70° to core pyrrh., pyrite, sphalerite, chalco, min. 10%	62	181.6	183.2	1.6	.02	.10	.02	Nil
196.9-198.5'	Contact zone, chert, chlorite, quartz epidote, pyrite, pyrrhotite, min. 5%	63	194.1	196.9	2.8	*.06	.70	.06	
198.5-218.2	Granite, light colored, med. to coarse grain, hard, pyrite, min. sparse, upper contact 30° lower contact 45° to core	64	196.9	198.5	1.6		.01		.04
218.2-219.4	Contact zone (as above) min. 3%	65	218.2	219.4	1.2		.03		.03
219.4-222.6	Chlorite schist, dark green, fine grain, soft, schistosity 45° to core, min. sparse								
222.6-223.6	Quartz, chert, chlorite, graphite, pyrr, pyrite, min. 8%	66	222.6	223.6	1.0		.08		.03
223.6-232.3	Tuff, interbedded graphitic and slate almost black, fine grain, med. soft, bedding range from 60° down to 20° to core								

NORTHERN MINER FORM 505

DRILLED BY Canadian Longyear SIGNED (signed) R. Peterson

# DIAMOND DRILL RECORD

PROPERTY Tooms Nickel Syndicate HOLE No. T9  
 SHEET NUMBER 3 SECTION FROM 232.3 TO 389.5 STARTED September 12, 1967  
 LATITUDE..... DATUM..... COMPLETED September 17, 1967  
 DEPARTURE..... BEARING..... ULTIMATE DEPTH 612.0'  
 ELEVATION..... DIP..... PROPOSED DEPTH.....

DEPTH FEET	FORMATION	SAMPLE NO.	FROM	TO	WIDTH	ASSAY VALUES			
						Au. Oz.	Cu. %	Zn. %	Ni. %
	227.7 4" Qut. vein								
232.3-257.9	Chlorite schist, dark green, fine grain, med. soft, minor qtz. carb. schistosity 30° to 45° to core. min. sparse								
257.9-389.5	Meta andesite								
	<del>274.4 chloritized, dark green, fine grain, med. hard qtz. carb., 20% schistosity changing from 30° to parallel to core. pyrrh. pyrite, chalco, sphalerite min. 2%+</del>	67	266.8	268.4	2.1		.04	.38	.01
	<del>320.1 light green, med. to coarse grain, hard, prominent amphibole alteration, minor qtz. carb. shearing parallel to core, min. sparse</del>								
	<del>289.6-293.2 Basic, dark, med. coarse grain, hard, bronze mica up to 5 m m, upper contact 30° to core, lower contact 60° to core</del>								
	<del>325.6 light green, uniform med. fine grain, hard, min. negative</del>								
	<del>346.9 dark green, med. grain, low angle to parallel to core schistosity.</del>								

NORTHERN MINER FORM 905

DRILLED BY Canadian Longyear

SIGNED (signed) R. Peterson

# DIAMOND DRILL RECORD

PROPERTY Tooms Nickel Syndicate HOLE No. T9  
 SHEET NUMBER 4 SECTION FROM 389.5 TO 612 STARTED September 12, 1967  
 LATITUDE \_\_\_\_\_ DATUM \_\_\_\_\_ COMPLETED September 17, 1967  
 DEPARTURE \_\_\_\_\_ BEARING \_\_\_\_\_ ULTIMATE DEPTH 612.0'  
 ELEVATION \_\_\_\_\_ DIP \_\_\_\_\_ PROPOSED DEPTH \_\_\_\_\_

DEPTH FEET	FORMATION	SAMPLE NO.	FROM	TO	WIDTH	ASSAY VALUES			
						Au. Oz.	Cu. %	Zn. %	Ni. %
	382.8 fairly massive, qtz. carb., siliceous feldspathic alteration, min. sparse to neg.								
	389.5 gray green, sheared at 55° to core.								
389.5-398.0	Fragmental, bleached, gray med. grain, hard, silicified, chalco., pyrhh., min. 5%+	68	389.5	398.0	8.5		.09		.16
398.0-430.5	Peridotite, bleached, talcose, gray, med. to coarse grain, soft, very minor magnetite, py. min. negative								
	pyrite, chalcopyrite, min. 2%	69	416.2	416.5	0.3		.19		.09
	423.3-425.0 Lost core								
430.5-440.9	Fragmental (inclusion?) highly altered, bedding 70° to core, feldspathic, biotite, chlorite, cubic py. specks chalco., min. 5%								
	cubic py. specks chalco. min. 3%	70	430.8	434.7	3.9		.05		.05
	biotite schist, min. negative	71	434.7	436.0	1.3		.05		.03
	cubic pyrite, specks chalco., min. 5%+	72	436.0	439.0	3.0		.16		.01
440.9-612.0	Peridotite, dark gray fairly coarse grain, med. soft, min. negative, bleached and not so talcose, core loss 27'								
612	core recovery in peridotite 84.2% End of hole								

NORTHERN MINER FORM 505

DRILLED BY Canadian Longyear SIGNED (signed) R. Peterson



41010NW0068 10 TOOMS

900

THE MINING ACT REPORT OF WORK

recorded.

To the Recorder of SUDBURY Mining Division

I, ARMAC SECURITIES LIMITED

name of Recorded Holder

Miner's Licence

357 BAY STREET, TORONTO, ONTARIO T 35

Post Office Address

do hereby report the performance of 2999 days of Diamond Drilling

type of work

not before reported to be applied on the following contiguous claims

Table with 6 columns: Claim No., Days, Claim No., Days, Claim No., Days. Lists claims 136456 through 136469 with 166.6 days each.

All the work was performed on Mining Claim (s) 136457, 136458, 136461 & 136469

READ CAREFULLY: THE FOLLOWING INFORMATION IS REQUIRED BY THE MINING RECORDER

- For Manual Work, Stripping or Opening up of Mines, Sinking Shafts or Other Actual Mining Operations - Names and addresses of the men who performed the work and the dates and hours of their employment.
For Diamond and other Core Drilling - Footage, No. and angle of holes and diameter of core. Name and address of owner or operator of drill. Dates when drilling was done. Signed core log and sketch in duplicate.
For Compressed Air or Other Power Driven or Mechanical Equipment
Type of drill or equipment. Names and addresses of men engaged in operating equipment and the dates and hours of their employment.
For Power Stripping - Type of equipment. Name and address of owner or operator. Amount expended. Dates on which work was done. Proof of actual cost must be submitted within 30 days of recording.
With each of the above types of work sketches are required to show the location and extent of the work in relation to the nearest claim post. In the case of diamond or other core drilling the sketch must be submitted in duplicate.
For Geological and Geophysical Survey - The names and addresses of men employed as well as dates. Type of instrument used in the case of geophysical survey. Reports and maps in duplicate must be filed with the Minister within 60 days of recording.
For Land Survey - the name and address of Ontario Land surveyor.

The Required Information is as Follows: (Attach a list if this space is insufficient)

No. of holes drilled.... 9
Angle ..... 45° to 68°
Diameter of core ..... AXI (1 5/32")
Drilled by ..... Longyear Diamond Drilling, North Bay, Ontario.
Dates upon which drilling was done .... August 2, 1967 to September 17, 1967

ARMAC SECURITIES LIMITED

Date ..... 25th June, 1968

Signature of Recorded Holder

The Mining Act Certificate Verifying Report of Work

I, ARMAC SECURITIES LIMITED C. A. BURNS

357 BAY STREET, TORONTO, ONTARIO, Rm. 1405, 100 ADELAIDE ST. W (Post Office Address)

hereby certify:

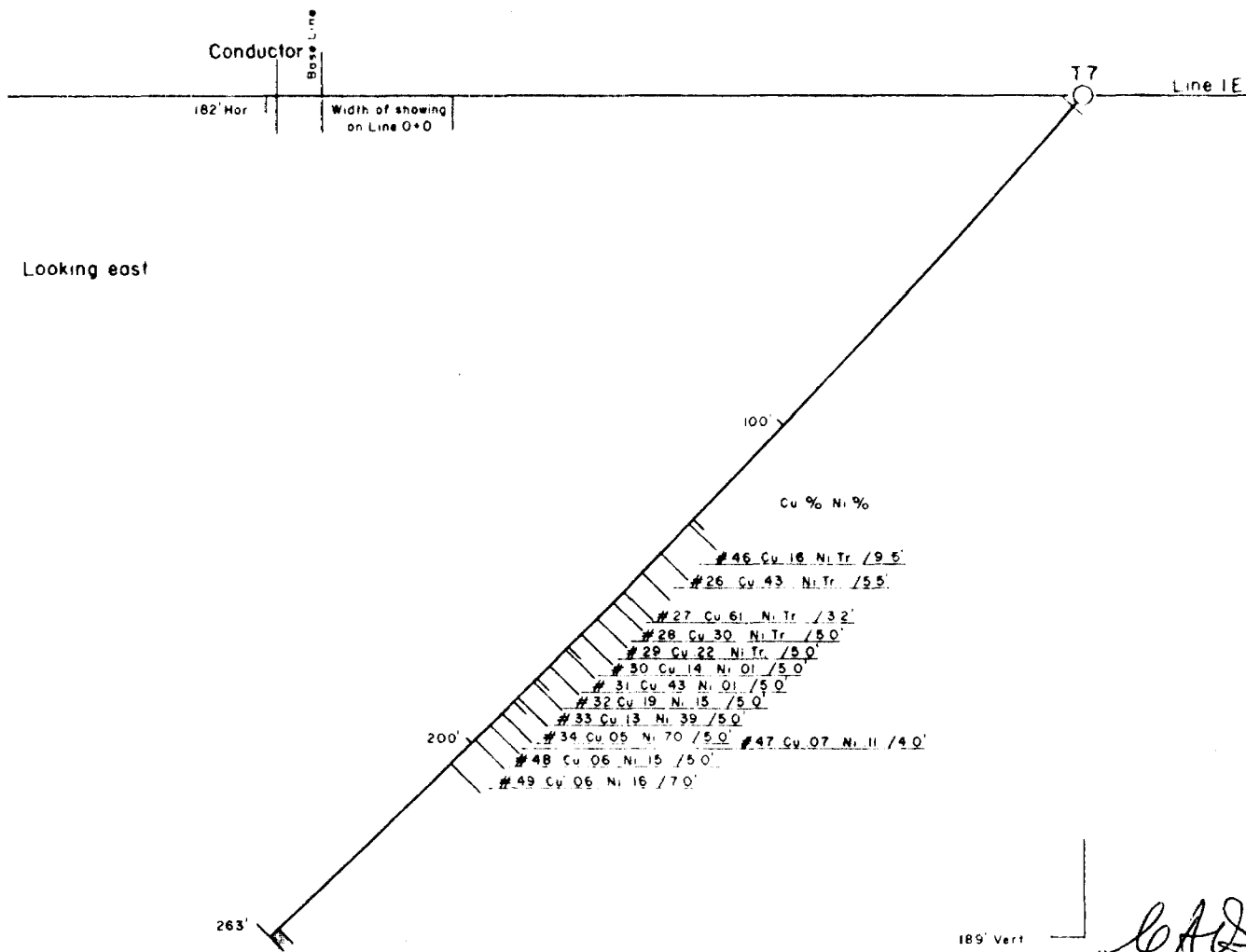
- 1. That I have a personal and intimate knowledge of the facts set forth in the report of work annexed hereto, having performed the work or witnessed same during and/or after its completion.
2. That the annexed report is true.

Dated 25th June 1968

Signature

Handwritten numbers: 136446, 136461

THE PENALTY FOR MAKING A FALSE STATEMENT IN THIS REPORT AND/OR CERTIFICATE IS \$500. OR SIX MONTHS IMPRISONMENT OR BOTH



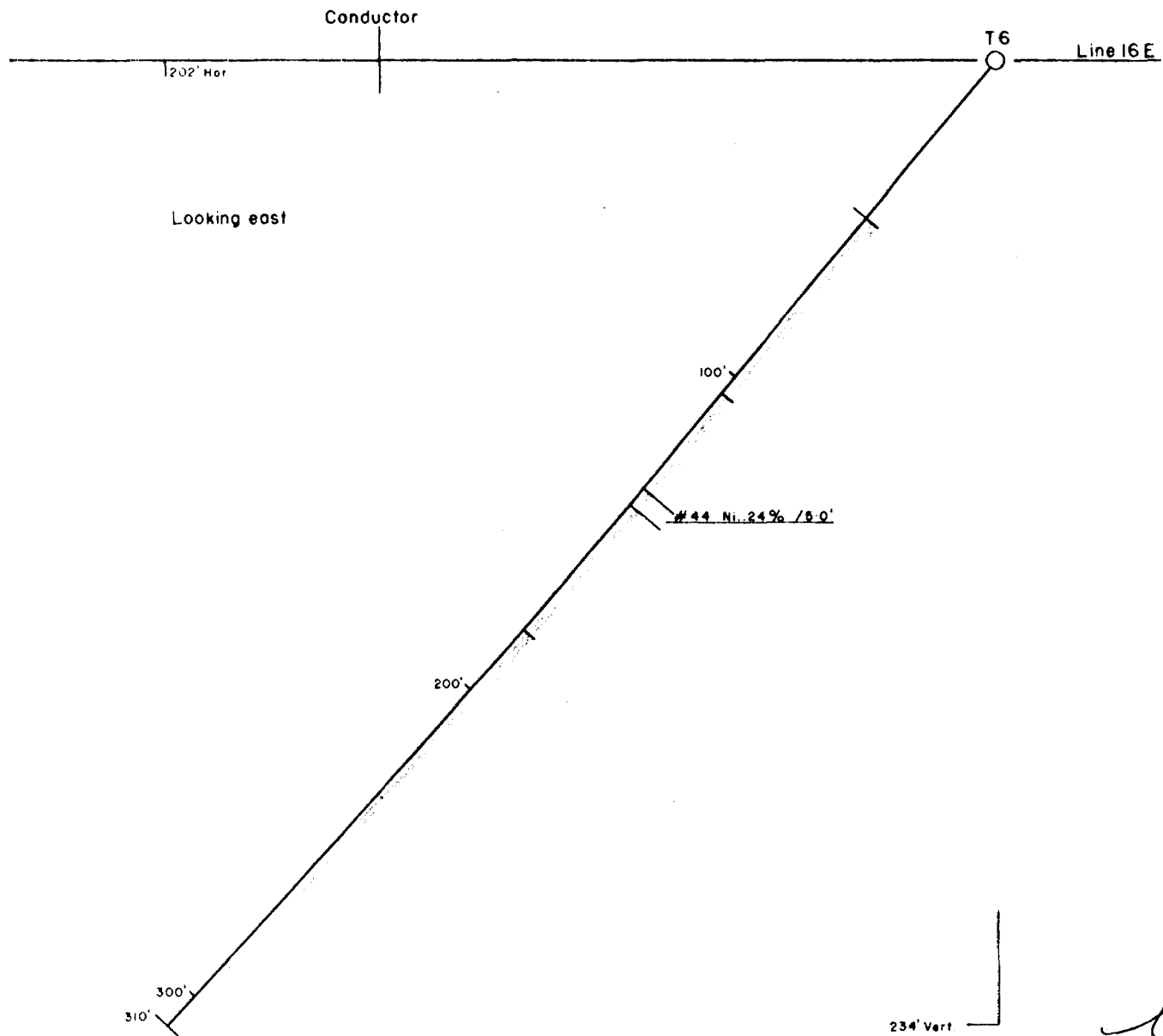
- Granite
- Diorite, Meta Andesite
- Peridotite
- Tuff, Sediment
- Volcanic

**Tooms Nickel Syndicate**

Cross Section, DDH # T7  
 Bearing, Az 3° - Dip, Collar - 49°  
 Scale 1" = 40'

6-9-67

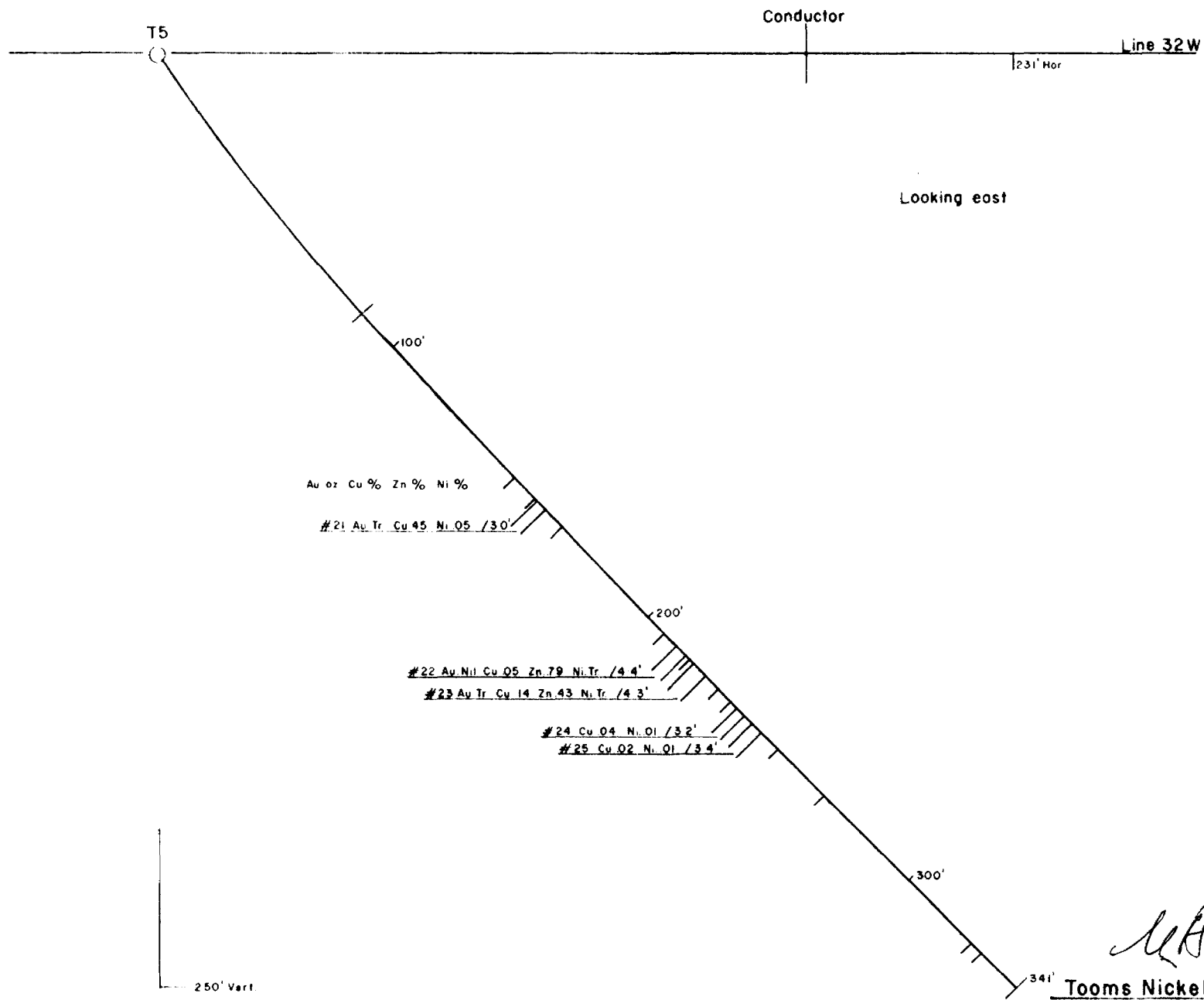
R Petersen



*CRAD*

**Tooms Nickel Syndicate**

Cross Section, D.D.H.# T6  
 Bearing, Az 3° - Dip, Collar - 50°  
 Scale 1" = 40'  
 6-9-67 R Petersen



*Handwritten signature*

**Tooms Nickel Syndicate**

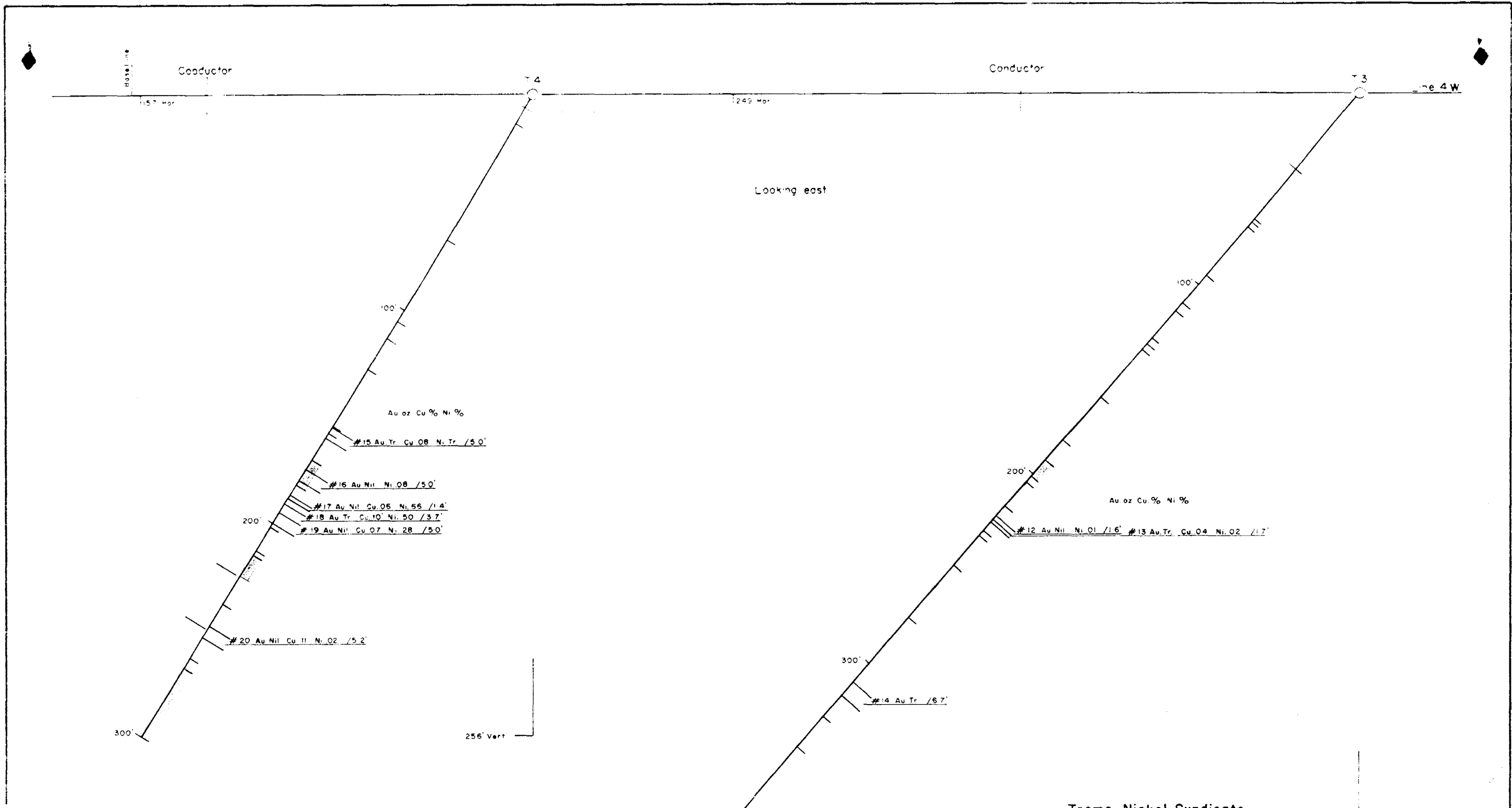
Cross Section, DDH # T5

Bearing, Az 183° - Dip, Collar - 55°

Scale 1" = 40'

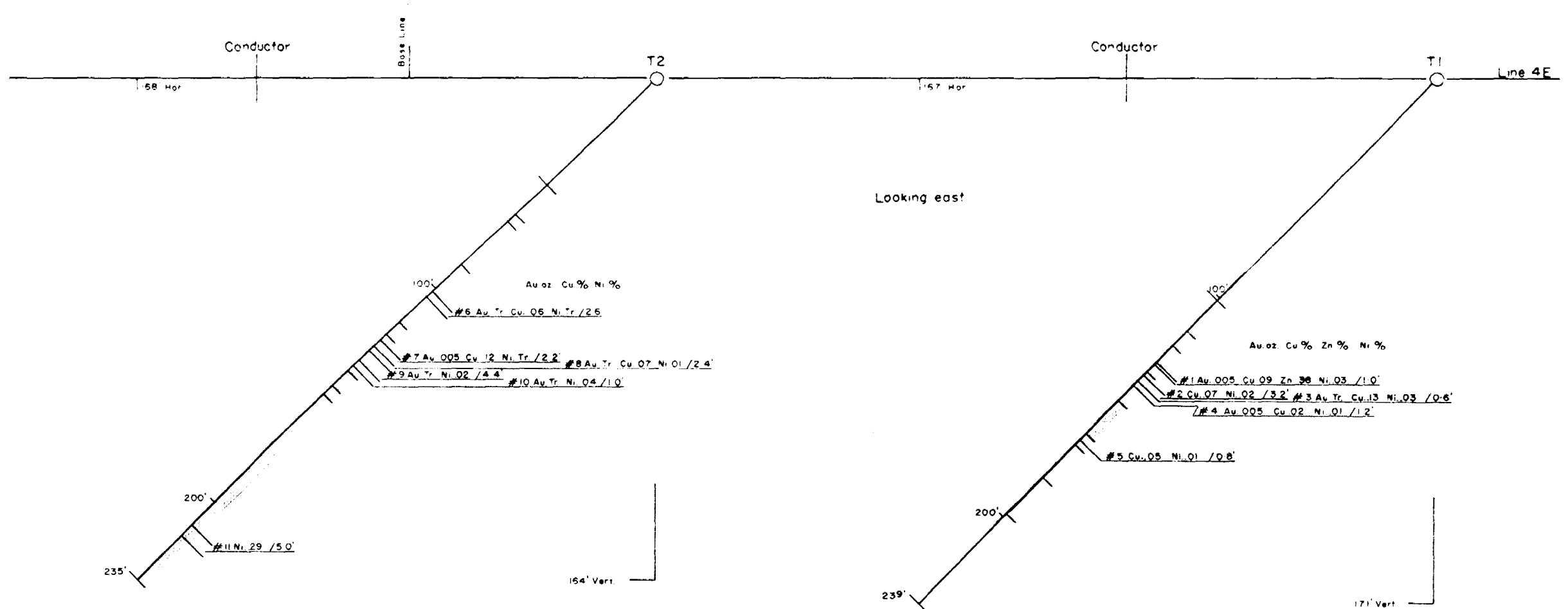
6-9-67

R Petersen





Peridotite  
Outcrop



- Granite . . . . . [hatched pattern]
- Diorite, Meta Andesite . . . . . [white box]
- Peridotite, Lamprophyre . . . . . [horizontal lines]
- Tuff, Sediment, graphitic . . . . . [vertical lines]
- Volcanic . . . . . [diagonal lines]

*ccad*

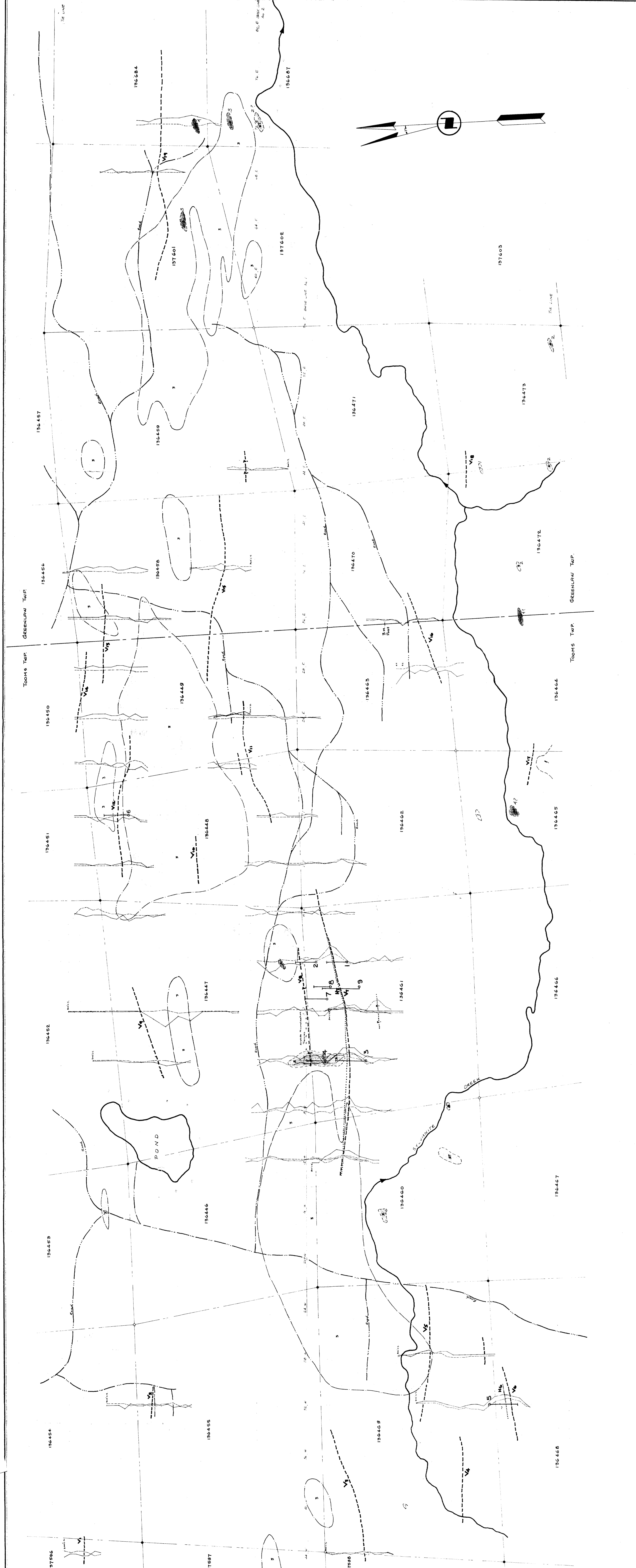
**Tooms Nickel Syndicate**

Cross Section, D.D.H #s T1-T2

Bearing, Az. 3° - Dip, Collar - 46-45°

Scale 1" = 40'

6-9-67 R. Petersen



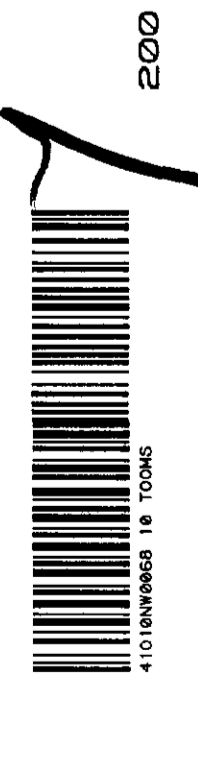
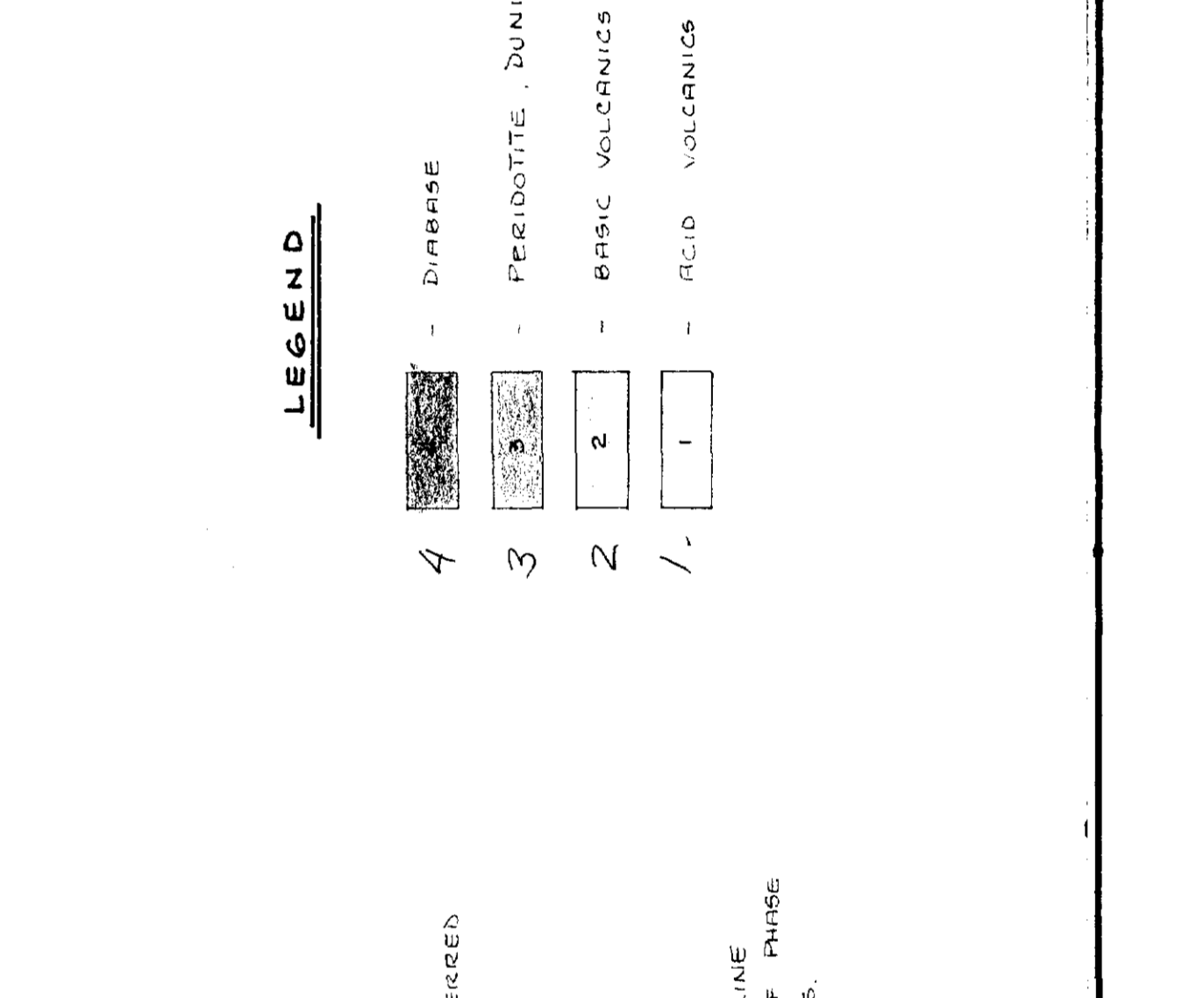
Tooms Nickel  
E.M. F. 1997  
C.H.R.

<b>TOOMS NICKEL</b>
TOOMS & GREENLAW TOWNSHIPS - SUBBURY MINING DIVISION - ONTARIO
<b>COMPOSITE PLAN</b>
SHOWING PERTINENT GEOLOGICAL AND GEOPHYSICAL FEATURES
DATE: <i>August 1997</i> SCALE: 1 INCH = 200 FEET DRAWN BY: <i>W.S.</i>
<b>M.E.M. CONSULTANTS LIMITED</b>

- SYMBOLS**
- ROAD
  - SECTION CORNER - GEOMETRICALLY INTERFERED
  - BOUNDARY OF PROPERTY
  - RIVER OR STREAM
  - NEIGHBORHOOD LOOP E.M. PROPERTY
  - NATIONAL LOOP E.M. PROPERTY
  - INDIVIDUAL LOOP E.M. PROPERTY - SOLID LINE
  - IN-PHASE BOUNDARY & DIMED LINE OUT OF PHASE BOUNDARY
  - DASH LINE - BOUNDARY, ASSUMED
  - DASH NUMBER

- LEGEND**
- 4 - DIORITE
  - 3 - PERIDOTITE, QUARTZ, ETC.
  - 2 - BASIC GNEISS & PYROCLASTICS
  - 1 - GNEISS & QUARTZ

- D Drill Hole



2000

20W

16W

12W

8W

4W

N  
0+0

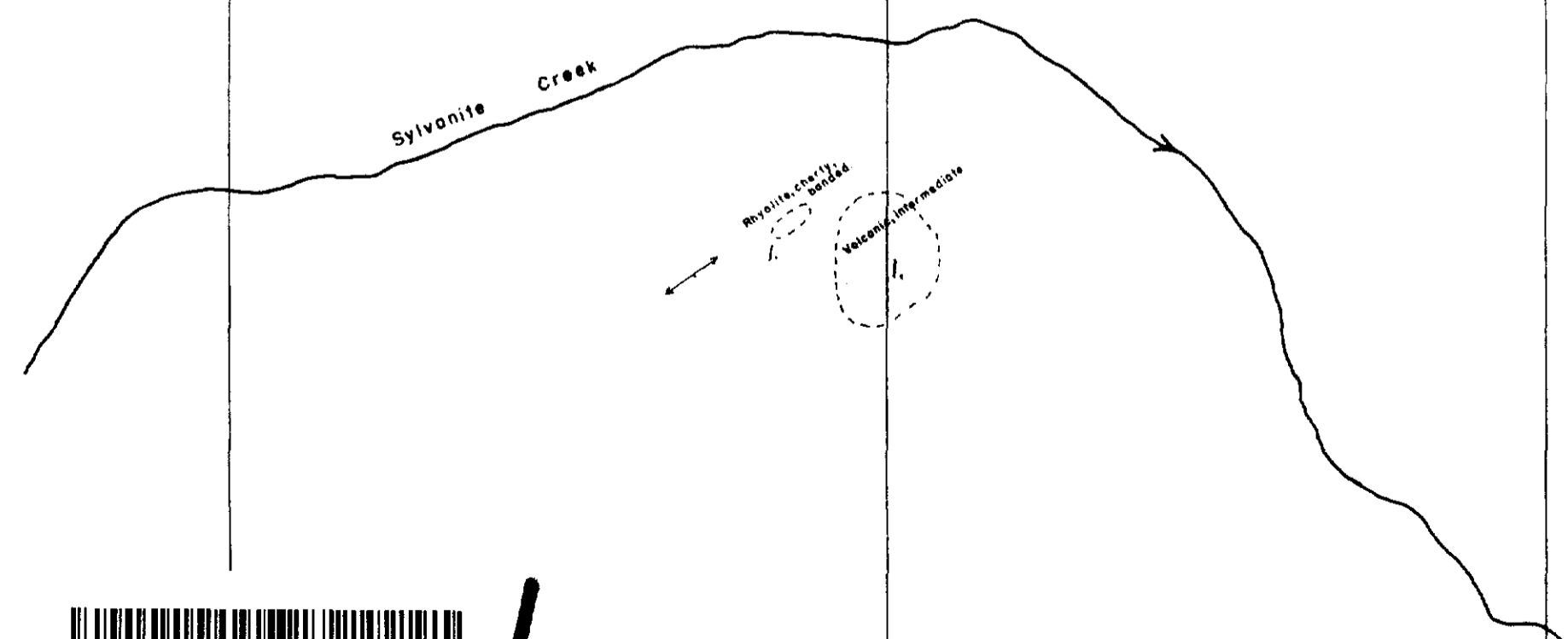
4E

8E

12E

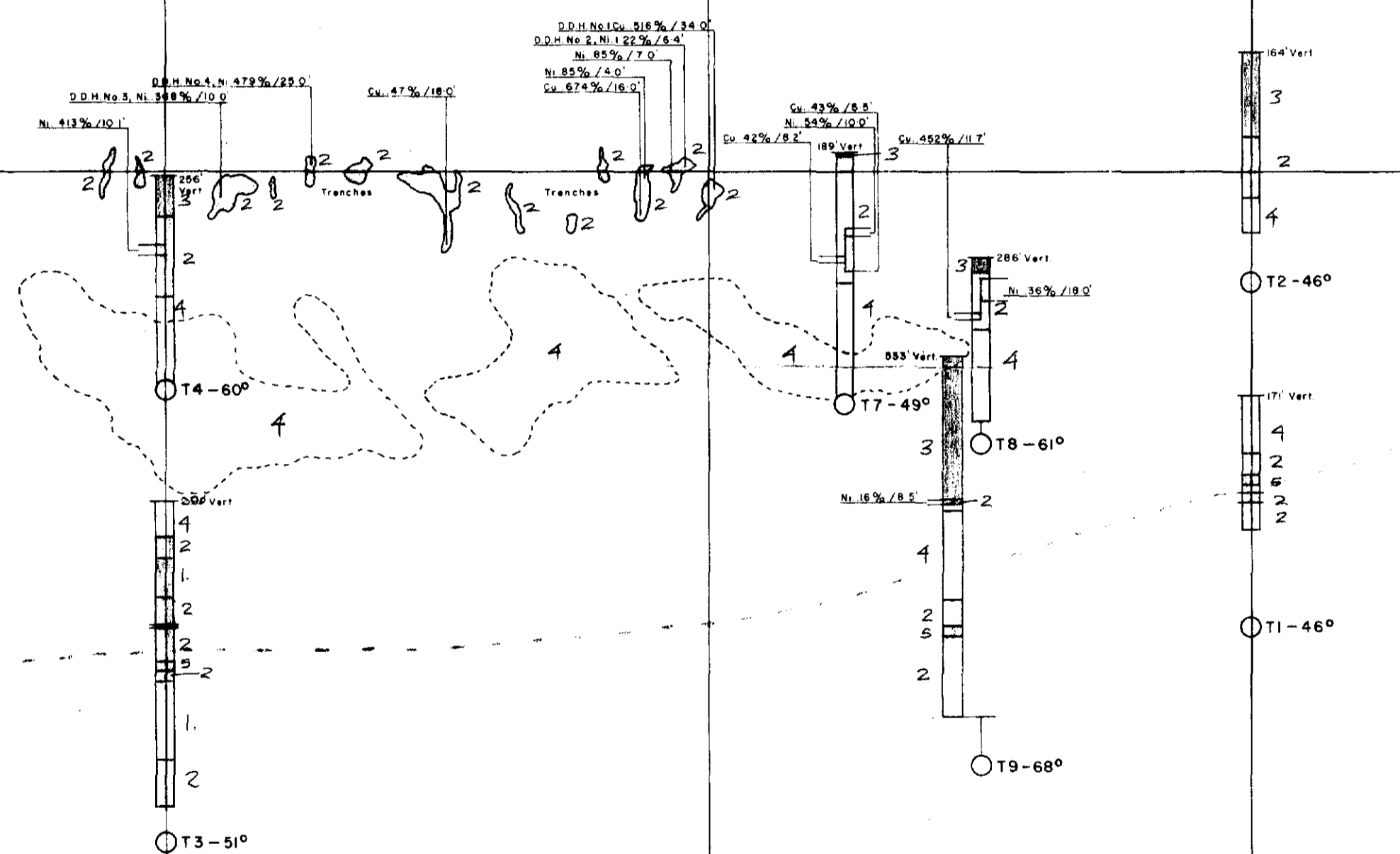
BL

BL



210

- Granite . . . . . 5
- Diorite, Meta Andesite . . . . . 4
- Peridotite . . . . . 3
- Sediment, Tuff, graphitic . . . . . 2
- Volcanic . . . . . 1



Tooms Nickel Syndicate  
 SURFACE PLAN  
 Showing Geology  
 Rock Trenching-Diamond Drilling  
 25-9-67 Scale 1"=100' R.Petersen

*[Signature]*

