



41014SE0001 28 LACKNER

010

Diamond Drilling

Township of LACKNER

Report NO: 28

Work performed by: Dominion Gulf Company

Claim NO	Hole NO	Footage	Date	Note
S 54097	1	250'	Feb/53	(1)
S 53644	2	253'	Feb/53	(1)
S 58586	3	250'	Feb/53	(1)
S 58585	4	250'	Feb/53	(1)

Notes:

(1) FOR MORE INFORMATION SEE FILE #63.3370

LeBrasseur Lackner Inc. Lackner Twp. Sudbury Mining Division, Ont.

D.D.H. No. 1 Located on Claim S-54097

Dip -45°
Direction East.

Location on Claim - 670' S and 570' W
of N.E. Corner.

Drilled - 1952

Loc. on Mag Survey- Line "P"
3650' W. of Base line.

Core logged by
D.C. McKechnie, Feb 14/53.
Sudbury Ont.

From	To	Description
0.0'	5.5'	Casing.
5.5	31.0	Syenite, coarse grained, Occas. spot Magnetite.
31.0	38.0	Missing.
38.0	48.0	Syenite, Med. Grained. Dark, Occas Spot Magnetite.
48.0	63.0	Syenite, gneissic @ 100 " " "
63.0	77.0	" ,Coarse Gr. Light , coloured
77.0	86.0	" " Dark " "
86.0	100.0	" " " Occas spot magnetite.
100.0	122.0	" Med. Grained gneissic
122.0	128.0	" " " light colored
128.0	131.0	" coarse " spots magnetite.
131.0	137.0	" Med " " " "
137.0	139.0	" coarse " occas. spot magnetite.
139.0	142.0	" " " " " "
142.0	143.0	" " " " " "
143.0	147.0	# " " " " "
147.0	152.0	" " " " " "
152.0	158.0	" " " " " "
158.0	161.0	" " " " " "
161.0	165.0	" Med. gr.
165.0	191.0	" coarse " " " "
191.0	216.5	" " with Horneblende.
216.5	242.0	" " Occas. spot magnetite.
242.0	250.0	" " " " "

End of Hole.

185 McNaughton St.
Sudbury Ont.
February 21, 1953

J. M. Kechnie
Mining Engineer. P. Eng.

T-2145

ASSESSMENT WORK	
Rec'd from	Mining Recorder
	Sudbury
Date	Apr. 13/53
	W.A.
	Resident Geologist

☒ OFB Tower

Line N

DD.H 1
-45°

Line P

S-54097

RMH

1" = 200'

T-2145

Diamond Drill Record.

D.D.H. No. 2

Derrough Lackner Inc. Lackner Twp. Sudbury M.D. Ontario.

D.D.H. No. 2, Located on Claim S-53644

Dip - 45°
 Direction - West.
 Location on claim - 420' S, and 200' W of
 N.E. Corner
 Location on Mag. Survey - Line "L"
 200' E. of base line

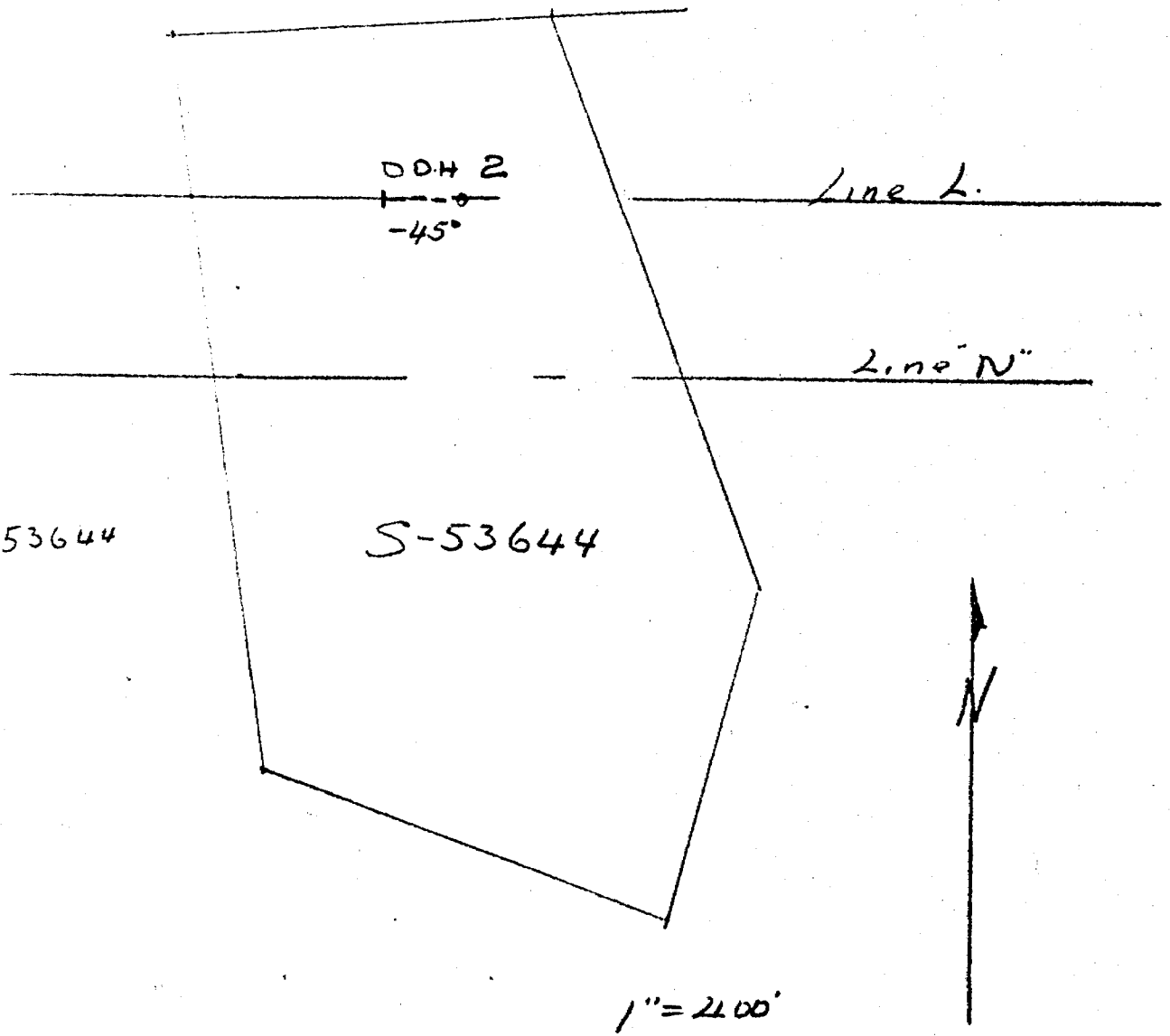
Logged by D.C. McEachnie
 Feb. 14, 1953, Sudbury
 Drilled 1952
 Core EXT- 15/16"

From	To	Description
0.0	20.0	- Casing,
20.0	44.0	- Syenite, Med. grain, dark
44.0	50.0	- Syenite, fine " dark.
50.0	60.0	- " coarse " "
60.0	70.0	- Dyke, basic, fine gr.
70.0	88.0	- Syenite, med. grain, dark
88.0	97.0	- Dyke, basic, fine gr.
97.0	148.0	- Syenite, med. grain, dark
148.0	146.3	- " coarse " , light some magnetite.
146.3	160.0	- " med. gr. much biotite mica.
160.0	164.0	- " coarse " spots magnetite.
164.0	169.0	- " " " much biotite.
169.0	169.2	- " " " spots magnetite.
169.2	185.0	- " " " "
185.0	189.0	- " " " spots magnetite.
189.0	195.0	- " Med. " "
195.0	198.0	- " Fine gr. light color.
198.0	204.0	- " coarse " dark. "
204.0	244.0	- " Med Gr. " light "
244.0	253.0	- " " " dark.
End. of Hole.		

D.C. McEachnie
 D.C. McEachnie, Mining Engineer
 P. Eng.

185 McNaughton St.
 Sudbury Ont.
 February 23, 1953.

T-2145



T-2145

MacDonnell Lackner Inc., Lackner Twp, Sudbury M.D. Ont.

D.D. H. No. 3, located on claim - S- 58586

Dip -45°

Direction - West.

Core size-EXT- 15/16"

Location on claim - 120' S, and 160'E
of N2W. Corner.

Drilled - 1952

Location on Mag.Survey- Line "C"

1050' E. of base line. Logged by D.C. McMechnie
Feb.14/53 at Sudbury.

From	To.	Description
0.0	- 10.0'	- Casing.
10.0	- 35.5	- Syenite- Fine grain- dark color
35.5	- 61.0	- " " " light "
61.0	- 92.0	- " " " dark "
92.0	- 92.3	- " - seam with magnetite.
92.3	- 121.0	- " fine grain. dark
121.0	- 122.5	- " " " spots magnetite.
122.5	- 127.0	- " " " "
128.0	- 128.0	- " " " spots magnetite.
128.0	- 159.0	- " " " dark color
159.0	- 164.0	- " " " lighter in color
164.0	- 174.0	- " med " sheared with much chlorite.
174.0	- 211.5	- " " " dark color.
211.5	- 211.7	- " " " spots magnetite with biotite
211.7	- 250.0	- " " " dark color

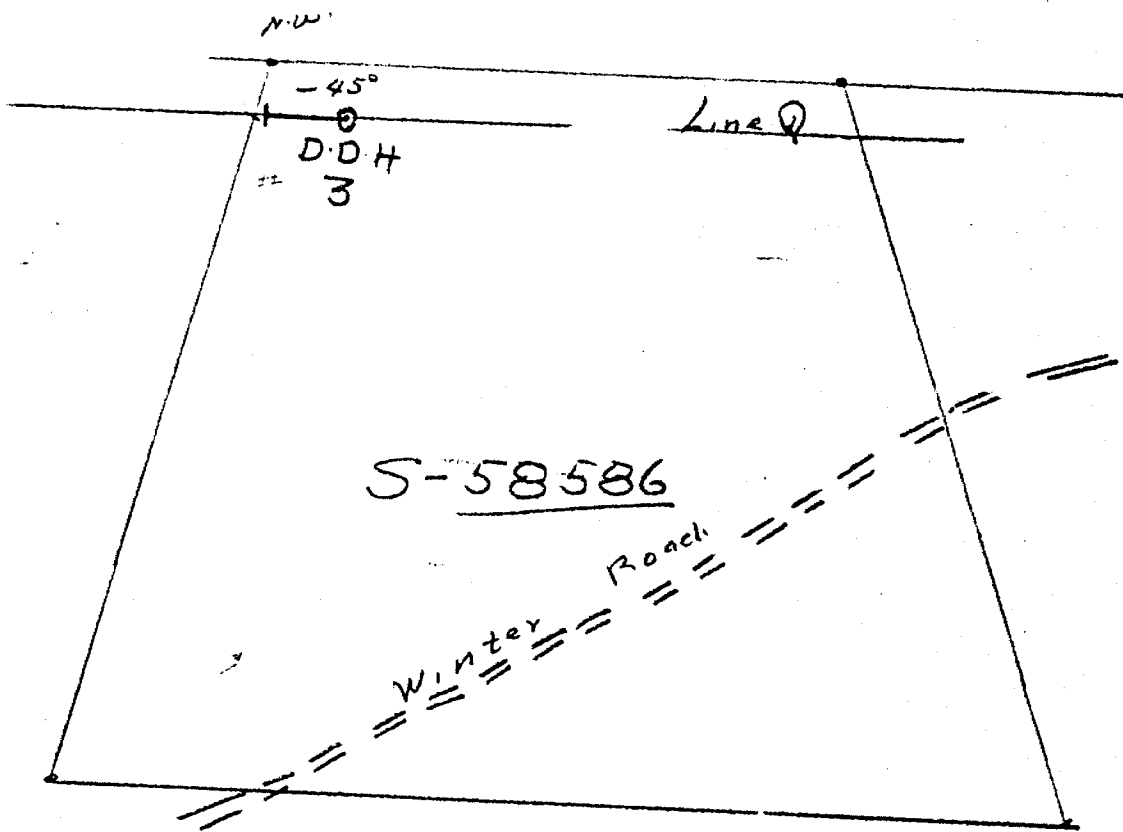
End of Hole.

D.C. McMechnie

D.C. McMechnie, ? Mining Engineer
P. Eng.

185 McNaughton St.
Sudbury Ont.
Feb. 21, 1953

T-2145



1" = 400'

T-2145



MacDonnell Lackner Inc., Lackner Twp. Sudbury M.D. Ontario

D.D.H. No. 4 Located on Claim No. S- 58385

Dip - 45°
Direction - West.

Core size -EXT- 15/16"

Location on Claim - 400' S. of and 350' W. Drilled - 1952
of N.E. Corner.

Location on Mag Survey- Line "N" Core logged by D.C. McKechnie
1450 E of Base Line. Feb. 14, 1953. Sudbwy

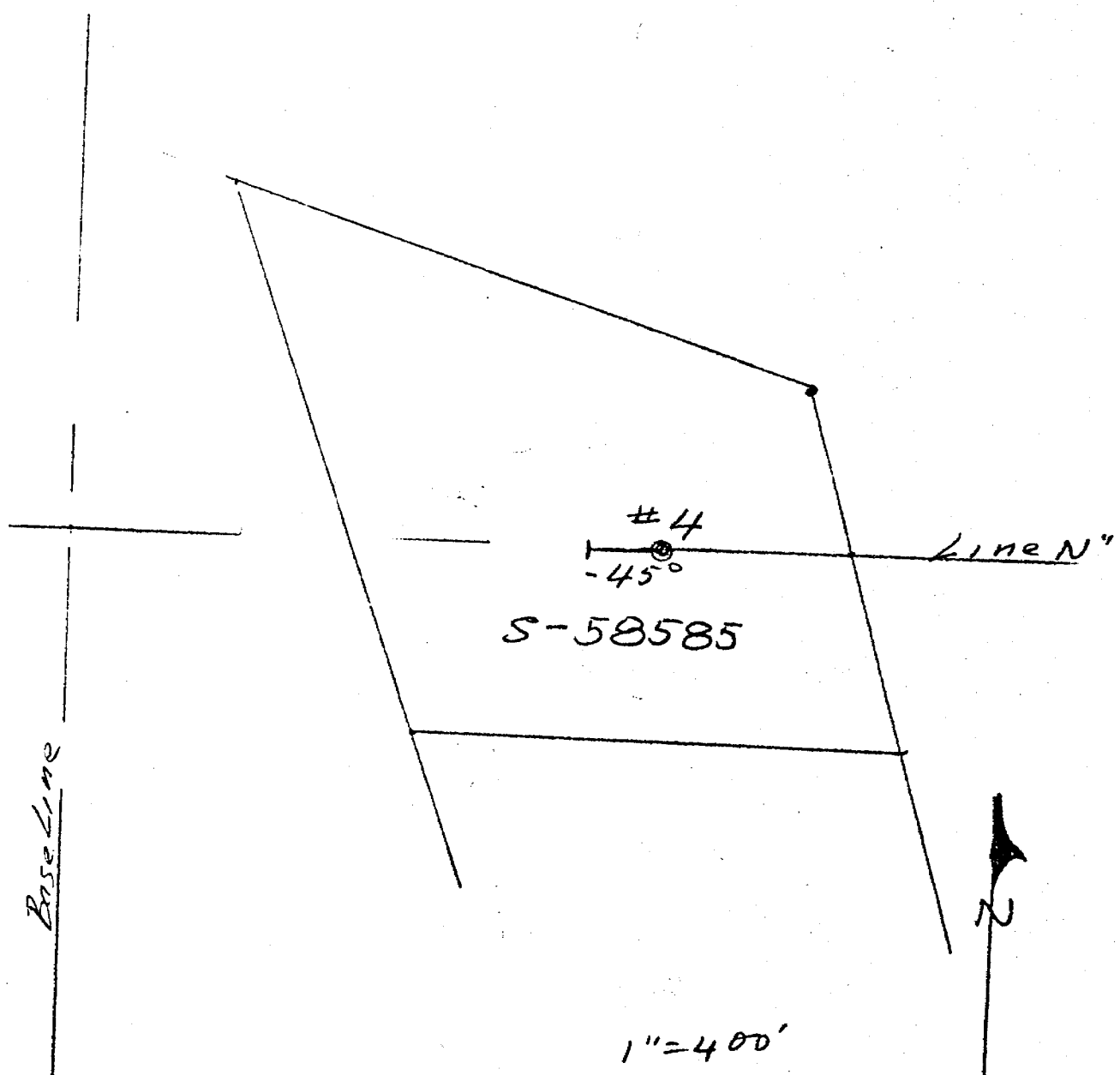
From	To.	Description.
0.0	10.0	Casing.
10.0	27.0	Granite, fine grain
27.0	85.0	Granite. (this rock is similar in appearance to the syenite, but contains a fair amount of quartz, and is classed as a granite) it is coarse grained and contains about 5% biotite and hornblende)
85.0		
85.0	109.5	" coarse gr. to very coarse.
109.5	134.0	" coarse gr. to very coarse.
134.0	170.0	" Med gr.
170.0	183.0	" some seams of gneissic structure @ 35°
183.0	209.0	" (Slight amount of pyrite @ 207'
209.0		
209.0	220.0	" fine grain.
220.0	222.0	" coarse " with biotite mica
222.0	231.0	" fine "
231.0	231.6	" with hornblende and some magnetite.
231.6	235.0	" fine grain.
235.0	244.0	" sheared with chlorite and biotite.
244.0	246.0	" Med. grain dark color with seams of magnetite @ 30°
246.0	254.0	" med. gra. gneissic with biotite.

End of Hole.

D.C. McKechnie
D.C. McKechnie. Mining Engineer.
P. Eng.

185 McNaughton St.
Sudbury Ont.
February 21/53.

T-2145



S-58585

#4
-45°

Line N"

Baseline

N

1" = 400'

T-2145