



41014SE0007 22 LACKNER

010

# Diamond Drilling

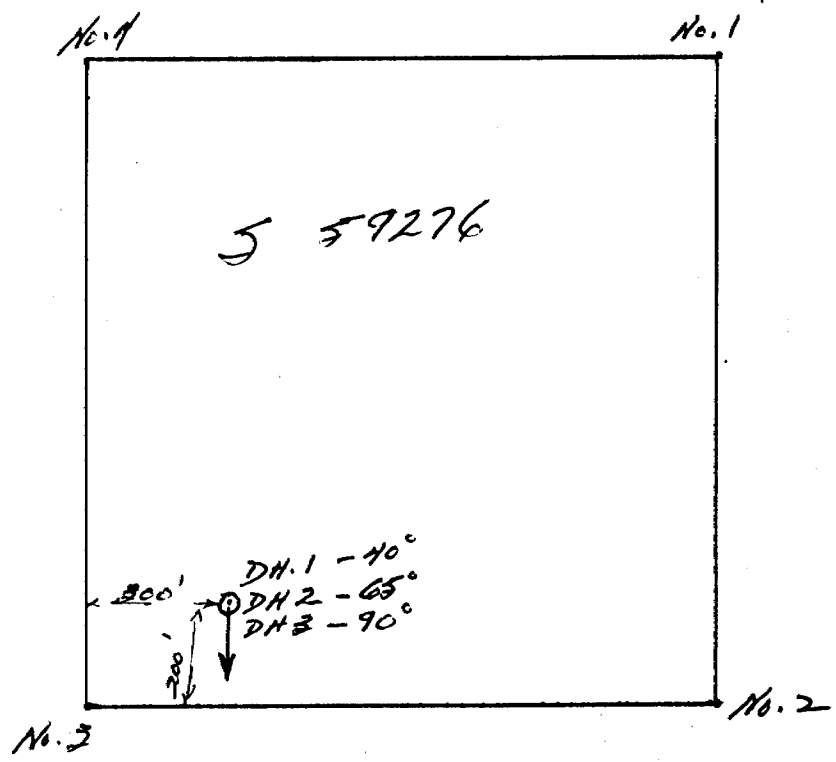
Township of LACKNER

Report No: 22

Work performed by: SILVERMAN

Claim No	Hole No	Footage	Date	Note
S 59276	# 1	340'	July/59	
	# 2	325'	Aug/59	
	# 3	101'	Aug/59	

Notes:



Plan of Drill Location  
Claim 5 59276  
Lacton Twp.

1" = 500'

U. H. Sinker  
Sept. 10, 1959

# DIAMOND DRILL RECORD

PROPERTY Silverman - Claim No. S 59276 HOLE NO. 1

Lackner Township

SHEET NUMBER 1 SECTION FROM \_\_\_\_\_ TO \_\_\_\_\_ STARTED 30 July 1959  
 LATITUDE 200' North, 300' East of DATUM \_\_\_\_\_ COMPLETED 2 August 1959  
#3 post S 59276  
 DEPARTURE \_\_\_\_\_ BEARING South ULTIMATE DEPTH 340  
40°  
 ELEVATION \_\_\_\_\_ DIP \_\_\_\_\_ PROPOSED DEPTH \_\_\_\_\_

DEPTH FEET	FORMATION	SAMPLE NO.	WIDTH OF SAMPLE	GOLD \$	SLUDGE GOLD \$
0.0	Collar				
6.0	Casing above solid				
6.0 - 45.0	Micaceous gneiss - small masses and blebs, pink quartz and feldspar foliation not strongly developed at 45° to core				
6.0 - 20.0	Fine to medium grain, massive, weakly foliated at 45°				
20.0 - 45.0	Medium grain, porphyritized, with wispy elongated phenocrysts quartz in feldspar				
45.0 - 105.0	Porphyritic micaceous gneiss - phenocrysts formed by small to medium blebs of quartz and feldspar, occasional streaks of quartz with hematite at low angle to core				
82.0 - 92.0	Massive, medium grain, occasional streaks and blebs of pyrite, pyrrhotite and minor chalcopyrite				
92.0 - 105.0	Occasional 1/4" streak quartz with accompanying sulphide				

*[Handwritten Signature]*

# DIAMOND DRILL RECORD

PROPERTY Silverman - Claim No. S 59276

HOLE NO. 1

Lackner Township

SHEET NUMBER 2  
 200' North, 300' East of  
 LATITUDE # 3 post S 59276  
 DEPARTURE \_\_\_\_\_  
 ELEVATION \_\_\_\_\_

SECTION FROM \_\_\_\_\_ TO \_\_\_\_\_  
 DATUM \_\_\_\_\_  
 BEARING South  
 DIP 40°

STARTED 30 July 1959  
 COMPLETED 2 August 1959  
 ULTIMATE DEPTH 340  
 PROPOSED DEPTH \_\_\_\_\_

DEPTH FEET	FORMATION	SAMPLE NO.	WIDTH OF SAMPLE	GOLD \$	SLUDGE GOLD \$
105.0 - 340.0	Micaceous gneiss - massive, slight foliation at 40° to 60° to core, some porphyritic horizons				
135.3 - 135.4	apatite vein at 70° to core, weak pyrrhotite mineralization on contact				
151.5 - 151.6	Siliceous horizon with hematite alteration, occasional specks pyrrhotite				
160.0 - 162.0	Altered zone with strong development of hematite, mica and epidote				
162.0 - 167.0	Medium grain, occasional narrow siliceous streak, weakly foliated at 60° to core				
167.0 - 168.0	Siliceous streaks with weak chalcopyrite and pyrrhotite mineralization				
211.0 - 212.0	Shear at 20° to core, moderate carbonatization, weak hematite flecks				
215.0 - 237.5	Medium grain, foliation at 50°, numerous 2" to 6" siliceous zones with strong mica development				
262.5 - 270.0	Moderate to coarse grain, strong mica development, foliation at 40° to 50°				

N.M.P. TORONTO-STOCK FORM NO. 501 REV. 12/51

DRILLED BY JUTRAS DIAMOND DRILLING CO.

SIGNED \_\_\_\_\_

*[Handwritten Signature]*

# DIAMOND DRILL RECORD

PROPERTY Silverman - Claim No. S 59276

HOLE NO. 1

SHEET NUMBER 3

SECTION FROM Lackner Township TO

STARTED 30 July 1959

LATITUDE 200' North, 300' East of  
# 3 post S 59276

DATUM

COMPLETED 2 August 1959

DEPARTURE

BEARING South

ULTIMATE DEPTH 340

ELEVATION

DIP 40°

PROPOSED DEPTH

DEPTH FEET	FORMATION	SAMPLE No.	WIDTH OF SAMPLE	GOLD g	SLUDGE GOLD g
270.0 - 296.5	Foliation at 45° to core, occasional siliceous blebs of feldspar and quartz				
296.5 - 299.0	Siliceous zone composed of gneiss cut by network of siliceous threads at various angles to core				
299.0 - 317.5	Massive, medium to coarse grain, contains pegmatitic zones with strong mica development				
317.5 - 340.0	Massive, medium grain, small to medium sized patches of quartz and feldspar giving a porphyritic appearance				
	END OF HOLE				

DRILLED BY Jutras Diamond Drilling Co.

SIGNED *W. L. Duke*

# DIAMOND DRILL RECORD

PROPERTY Silverman - Claim No. S 59276

HOLE NO. 2

SHEET NUMBER 1

Lackner Township

STARTED 3 August 1959

SECTION FROM \_\_\_\_\_ TO \_\_\_\_\_

LATITUDE 200' North and 300' East of

COMPLETED 6 August 1959

DATUM \_\_\_\_\_

DEPARTURE #3 post S 59276

BEARING South  
65°

ULTIMATE DEPTH 325.0

ELEVATION \_\_\_\_\_

DIP \_\_\_\_\_

PROPOSED DEPTH \_\_\_\_\_

DEPTH FEET	FORMATION	SAMPLE NO.	WIDTH OF SAMPLE	GOLD \$	SLUDGE GOLD \$		
0.0	Collar						
4.0	Casing						
4.0 - 325.0	Micaceous gneiss - weak foliation at 40° to 50°, scattered small to moderate sized blebs of quartz and feldspar, occasional patches of strong mica development						
	50.6 - 51.4 - Strong hematite alteration						
	77.0 - 88.5 - Medium grain, occasional 1" to 3" bands of siliceous alteration at 60° to core						
	88.5 - 93.0 - Psuedo porphyry, numerous moderate sized blebs of quartz and feldspar						
	97.0 - 97.5 - Weak shear at 70° to core						
	108.0 - 108.5 - Siliceous zone with weak hematite alteration						
	133.0 - 135.1 - Siliceous zone with weak disseminations of pyrite and chalcopyrite in matrix of quartz feldspar and mica						
	135.1 - 139.8 - Medium grain, strong foliation at 50°						

Jutras Diamond Drilling Co.

DRILLED BY \_\_\_\_\_

SIGNED *W. J. Jutras*

# DIAMOND DRILL RECORD

PROPERTY Silverman - Claim No. S 59276

HOLE NO. 2

SHEET NUMBER 2

SECTION FROM \_\_\_\_\_ TO \_\_\_\_\_

STARTED 3 August 1959

LATITUDE 200' North and 300' East  
of #3 post S 59276

DATUM \_\_\_\_\_

COMPLETED 6 August 1959

DEPARTURE \_\_\_\_\_

BEARING South

ULTIMATE DEPTH 325.0

ELEVATION \_\_\_\_\_

DIP 65°

PROPOSED DEPTH \_\_\_\_\_

DEPTH FEET	FORMATION	SAMPLE NO.	WIDTH OF SAMPLE	GOLD g	SLUDGE GOLD g
	139.8 - 141.5 - Siliceous zone with hematite alteration				
	167.0 - 172.0 - Foliation at 60°, blebs of quartz and feldspar				
	193.0 - 202.0 Strong mica development, foliation at 50° to 60° to core				
	226.5 - 248.5 - numerous patches of strongly siliceous material, largely quartz				
	263.0 - 266.5 - quartz feldspar zone, patches of mica				
	288.0 - 325.0 - numerous patches and streaks of hematite alteration				
	END OF HOLE				

N.M.P. TORONTO-STOCK FORM NO. 501 REV. 12/51

DRILLED BY Jutras Diamond Drilling Co.

SIGNED *[Signature]*

# DIAMOND DRILL RECORD

PROPERTY Silverman - Claim No. 59276 HOLE NO. 3

SHEET NUMBER 1 SECTION FROM Lackner Township TO  STARTED 6 August 1959  
 LATITUDE 200' North and 300' East DATUM  COMPLETED 7 August 1959  
of #3 post S 59276 BEARING  ULTIMATE DEPTH 101.0  
 DEPARTURE  DIP 90° PROPOSED DEPTH   
 ELEVATION

DEPTH FEET	FORMATION	SAMPLE No.	WIDTH OF SAMPLE	GOLD g	SLUDGE GOLD g
0.0	Collar				
6.0	Casing				
6.0 - 101.0	Micaceous gneiss - weak foliation at 45° to 60°, occasional small to medium sized patches of quartz and pink feldspar, massive, medium grain				
25.0 - 48.5	Numerous small patches of quartz and feldspar giving porphyry appearance, weak to moderate foliation at 60°, massive, medium grained				
60.9 - 61.3	Siliceous zone, quartz and feldspar				
67.0 - 67.1	Hematite alteration				
89.6 - 96.8	Occasional narrow siliceous zones				
	END OF HOLE				

N.M.P., TORONTO-STOCK FORM NO. 501 REV. 12/51

DRILLED BY Jutras Diamond Drilling Co.

SIGNED *W. J. Burke*



