



41014SE0008 21 LACKNER

010

### Diamond Drilling

Township of LACKNER

Report No: 21

Work performed by: APAMAG MINES LTD.

Claim No	Hole No	Footage	Date	Note
S 74697	3	361'	Feb/55	
S 74698	4	200'	Feb/55	
	5	1041'	Jan/57	

Notes:

# DIAMOND DRILL RECORD

HOLE NO. 3

PROPERTY **AFANG MINE LIMITED**

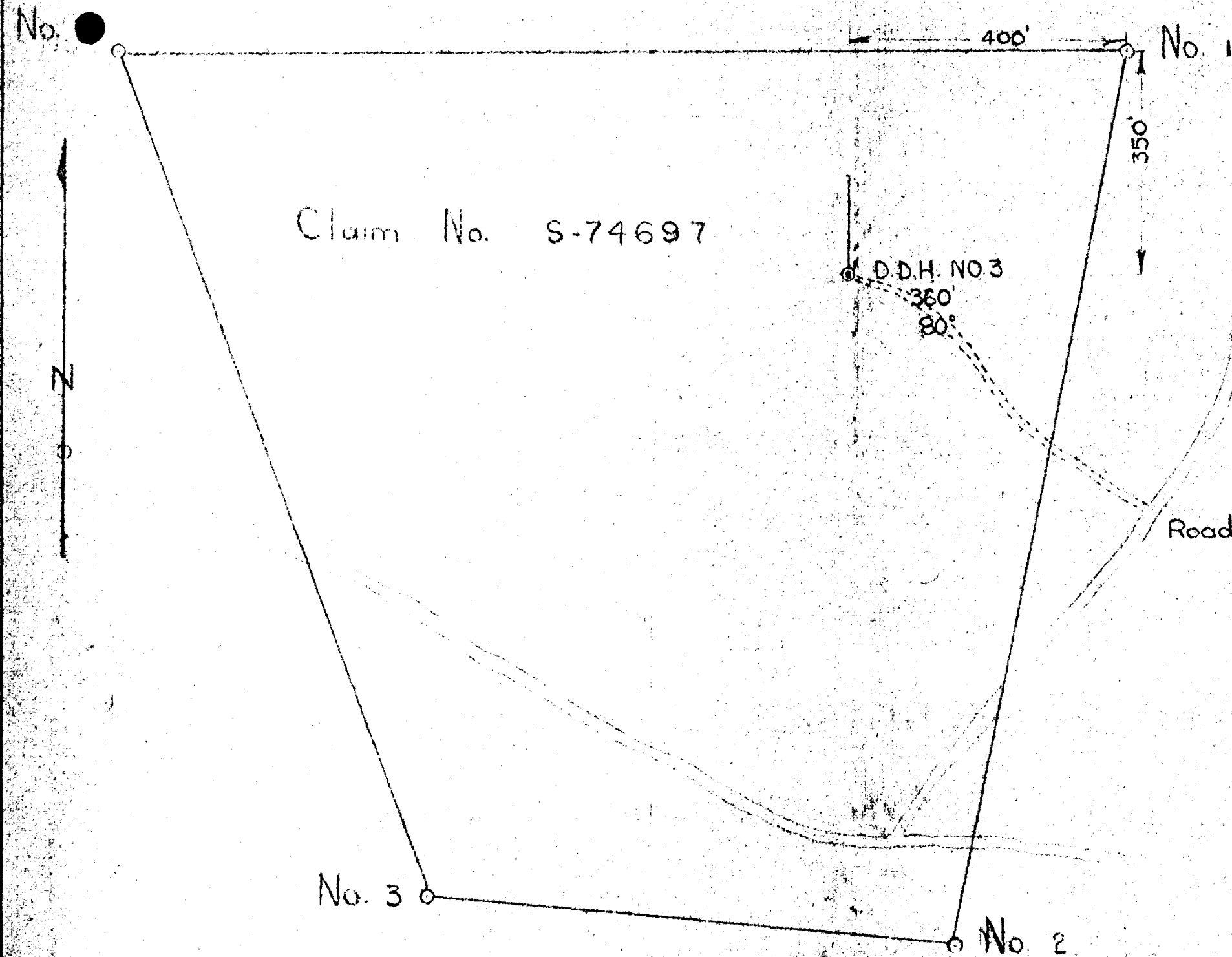
SHEET NO. **1**

DATE **March 19, 1955**

Angles	<b>80°</b>	Bearing	Due North	Latitude	400° West No. 1 Post	Started	February 7, 1955
		Length	361'	Departure	350° South No. 1 Post	Stopped	February 20, 1955
		Location	Claim No. S 74697	Elevation		Logged by	W. L. Angus

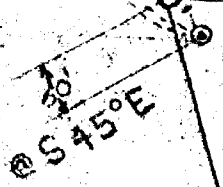
ROCK			CORE SAMPLES				SLUDGE SAMPLES		
Footage	Name of Rock	DESCRIPTION	Footage	Description	Width	Assay TA, CS	Footage	Width	Assay
0'-56'	Casing	0-31' Sand, gravel and boulders 31'-56' Rotten rock, very poor recovery. Includes 1-inch green apatite vein carrying fine specks of resin-like mineral (pyrochlore?)	31.0'-32.0'†	1A208	1.0'				
56'-84'	Hornblende Syenite	Medium to coarse grained, dark blotchy rock with eyes of hornblende, small amounts of quartz, apatite. At 69'-14 inch apatite carbonate vein 60° to core.							
84'-92'	Diabase	fine grained							
92'-100'	Hornblende Syenite	Same as above							
100'-101'	Quartz	8 inch stringer with syenite fragments 60° to core							
101'-112.5'	Qtz. Diabase	Medium grained with some chalcocyanite							
112.5'-142.5'	Hornblende Syenite	1" Apatite carbonate vein at 139.5' 60° to core							
142.5'-152.5'	Syenite Ferguson Hornblende	Feldspar phenocrysts up to 3/16 inch							
152.5'-195'	Syenite	Small quartz inclusions							
195'-198.5'	Diabase	Medium grained							
198.5'-200'	Hornblende Syenite	Same as above							
200'-201.5'	Diabase	" " "							







No. 4 Road



D.D.H. NO. 4  
200'  
80°

No. 1

Claim No. S-74698

No. 3

No. 2



COMPANY **ADAMAG MINES LIMITED****DIAMOND DRILL RECORD**HOLE NO. **5**PROPERTY **Lackner Township**SHEET NO. **1**DATE **Feb. 15/57**

DIP ANGLES  <b>90°</b>	BEARING	<b>Nil</b>	LATITUDE	STARTED	<b>Jan. 5, 1957</b>
	LENGTH	<b>1041'</b>	DEPARTURE	STOPPED	<b>Jan. 26, 1957</b>
	LOCATION	<b>100' @ 845° E from No. 4</b>		ELEVATION	LOGGED BY
					<b>C. M. Giddings</b>

**"E" Core**ROCK **Post. Claim No. S-74698**

CORE SAMPLES

FOOTAGE	NAME OF ROCK	DESCRIPTION	SAMPLE NO.	WIDTH	FOOTAGE	ASSAY		
						ASSAY	ASSAY	ASSAY
<b>0 - 27'</b>	<b>CASING</b>							
<b>27'-250'</b>	<b>NEPHELINE SYENITE PORPHYRY</b>	<b>Coarse grained - with medium sized phenocrysts of feldspar.</b>						
<b>250'-460'</b>	<b>NEPHELINE SYENITE PORPHYRY</b>	<b>Dark mineral, hornblende, fine grained. Some phenocrysts showing a slight bluish hue (Sodalite) At 250', phenocrysts decrease in number, but are still the same size 1/8" - hornblende becomes more prevalent - mineralization nil.</b>						
<b>460'-461'</b>		<b>Fine grained and light coloured. Predominately quartz - some small phenocrysts of feldspar, banded structure.</b>						
<b>461'-490'</b>	<b>NEPHELINE SYENITE PORPHYRY</b>	<b>Dark variety with few phenocrysts grading into light variety with many phenocrysts of feldspar.</b>						
<b>490'-513'</b>	<b>NEPHELINE SYENITE PORPHYRY</b>	<b>Medium grained, few phenocrysts. Hornblende prevalent, magnetite among the dark minerals.</b>						
<b>513'-517'</b>		<b>Dark, fine grained crystalline magnetite, with a few phenocrysts of feldspar. Some pyrite. Mineralization</b>						
<b>517'-544'</b>	<b>SYENITE</b>	<b>Coarse grained. Light coloured. No phenocrysts. Dark minerals - hornblende and magnetite.</b>						
<b>544'-750'</b>	<b>SYENITE PORPHYRY</b>	<b>Medium grained - not many phenocrysts - dark minerals hornblende and magnetite.</b>						
<b>750'-964'</b>	<b>SYENITE PORPHYRY</b>	<b>Medium grained - dark and reddish with orthoclase feldspar - dark minerals hornblende and magnetite.</b>						
<b>964'-966'</b>		<b>Very fine - dark compact dike.</b>						
<b>966'-977'</b>	<b>SYENITE PORPHYRY</b>	<b>Medium grained - dark and reddish. Same as from 750' - 964'.</b>						

COMPANY APAMAG MINES LIMITED

## DIAMOND DRILL RECORD

HOLE NO. 5PROPERTY Lackner TownshipSHEET NO. 2DATE Feb. 15/57

DIP ANGLES  <b>90°</b>	BEARING <b>N11</b>	LATITUDE	STARTED <b>Jan. 5, 1957</b>
	LENGTH <b>1041'</b>	DEPARTURE	STOPPED <b>Jan. 26, 1957</b>
	LOCATION <b>100' @ 545° E from No. 4</b>	ELEVATION	LOGGED BY <b>C.M. Giddings</b>

"E" Core

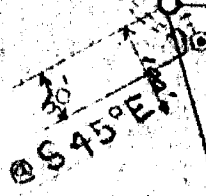
ROCK **Post. Claim No. B-74698**

CORE SAMPLES

FOOTAGE	NAME OF ROCK	DESCRIPTION	SAMPLE NO.	WIDTH	FOOTAGE	ASSAY		
						ASSAY	ASSAY	ASSAY
977'-981'	SYENITE PORPHYRY	Fine grained - dark (dike?) with a few phenocrysts of feldspar - some magnetite. Same as from 966'-977'.  END OF HOLE.  Core stored at Pioneer Consultants Limited office - Halleybury, Ontario -  Certified Correct  APAMAG MINES LIMITED <i>S. R. [Signature]</i> PRES.						
981'-1041'								
1041'								



No. 4 Road



DDH NO. 4  
200'  
80° (1955)  
DDH NO. 5  
1041'  
90° (1957)

Claim No. S-74698

No. 1

No. 3

No. 2

*Certified Correct*  
*R. J. Delp*

