



41014SE0013 16 LACKNER

010

# Diamond Drilling

Township of LACKNER

Report No: 16

Work performed by: CLAYMAC MINES LTD.

Claim No	Hole No	Footage	Date	Note
S 73578	3	255'	Nov/54	
S 73588	4	253'	Nov/54	
S 73583	5	404'	Nov/54	
	7	270'	Nov/54	
S 73582	6	357'	Nov/54	

Notes:

# DIAMOND DRILL RECORD

 PROPERTY CLAYNAC MINES LTD

 HOLE NO. 3

 SHEET NUMBER 2

 SECTION FROM 0.0 TO 255.0

 STARTED Nov 9/54

 LATITUDE 28-00 S

DATUM \_\_\_\_\_

 COMPLETED Nov 10/54

 DEPARTURE 18-00 E No. 1. B.L.

 BEARING West (ast)

 ULTIMATE DEPTH 255

ELEVATION \_\_\_\_\_

 DIP 40°

PROPOSED DEPTH \_\_\_\_\_

DEPTH FEET	FORMATION	SAMPLE NO.	WIDTH OF SAMPLE	GOLD \$	SLUDGE GOLD \$
0.0 - 15.0	Casing				
15.0 - 76.6	Hornblende Feldspar Gneiss - gneissosity at 50 to core.				
	36.5' - 39.4' Syenite				
	45.7' - 46.8' Dark biotite rich rock, probably dike rock.				
	56.3' - 57.6' - same as 45.7' - 46.8'				
76.6' - 170.7'	Basic Dike (1A) massive, diabasic texture, probably a sill.				
	86.6' - 88.0' Biotite Carbonate Gneiss.				
170.7 - 174.6	Nepheline Syenite (2)				
174.6 - 225.0	Basic Dike (1A)				
	175.4 - 177.0 syenitic				
	213.7 - 219.7 Hornblende Feldspar Gneiss altered (7)				
225.0 - 255.0	Hornblende Feldspar Gneiss (7)				
	230.9 - 235.5 - vuggy and carbonated.				
	236.2 - 238.4 - (4)				
	250.8 - 251.8 - Biotite rich rock, same as 45.7 - 46.8				
	253.6 - 254.5 - " " " " " "				

END OF HOLE

Canadian Langyear Ltd.

DRILLED BY \_\_\_\_\_

SIGNED \_\_\_\_\_

# DIAMOND DRILL RECORD

PROPERTY CLAYMAC MINES LTD. HOLE NO. 4

SHEET NUMBER 1 SECTION FROM 0.0 TO 253.0 STARTED Nov 11/54  
 LATITUDE 22+00 S. DATUM \_\_\_\_\_ COMPLETED Nov 13/54  
 DEPARTURE 13+00 E No. 1 R.L. BEARING West (ast) ULTIMATE DEPTH 253  
 ELEVATION \_\_\_\_\_ DIP 40 PROPOSED DEPTH \_\_\_\_\_

DEPTH FEET	FORMATION	SAMPLE NO.	WIDTH OF SAMPLE	GOLD \$	SLUDGE GOLD \$
0.0 - 18.0	Casing				
18.0 - 145.3	Biotite Hornblende Gneiss (7) gneissosity at 70 to core.				
	143.0' - 145.3' Biotite rich rock, probably dike rock.				
145.3 - 146.4	Basic Dike (1A)				
146.4 - 253.0	Biotite Hornblende Gneiss (7)				
	180.3' - 181.4' same as 143.0' - 145.3'				
	185.7' - 187.0' " " " "				
	227.1' - 230.0' Nepheline Syenite (2)				
	233.3' - 235.1' same as 143.0' - 145.3'				
	238.8' - 237.7' " " " "				
	237.7' - 246.0' Syenitic				
	End of Hole				

# DIAMOND DRILL RECORD

CLAYMAC MINES LIMITED

5

PROPERTY \_\_\_\_\_

HOLE NO. \_\_\_\_\_

SHEET NUMBER I  
 LATITUDE Line 45150 South  
 DEPARTURE 19 00 East no. I B.L.  
 ELEVATION \_\_\_\_\_

SECTION FROM 0.0 TO 404.0  
 DATUM \_\_\_\_\_  
 BEARING S 60 W Ast.  
 DIP Collar 45

STARTED Nov. 17/54  
 COMPLETED Nov. 19/54  
 ULTIMATE DEPTH 404.  
 PROPOSED DEPTH \_\_\_\_\_

DEPTH FEET	FORMATION	SAMPLE NO.	WIDTH OF SAMPLE	GOLD \$	SLUDGE GOLD \$
0.0-5.0	Casing				
5.0-198.1	Nepheline Syenite(2) 46.4-46.8-reddish alteration 51.4-54.0- " "				
198.1-240.5	Feldspathoidal Syenite(2B) -meagre disseminated magnetite, light grey to dark grey in color. Very siliceous to glassy rock. Fine grained.				
240.5-291.8	Nepheline Diorite Gneiss(3C)-dark fine grained, at 45 to core				
291.8-323.5	Feldspathoidal Syenite(2B)- grading to nepheline syenite in sections.				
323.5-404.0	Nepheline Syenite(2)- coarse grained, greater amount of hornblende.				
	End of Hole				

CLAYMAC MINES LIMITED  
Sample Assay Sheet  
Diamond Drill Hole No. 5

<u>Sample No.</u>	<u>From</u>	<u>To</u>	<u>Core Length</u>	<u>% Niobium</u>
CL - 14	240.5'	255.0'	14.5'	_____
CL - 15	256.2'	260.0'	3.8'	_____
CL - 16	262.1'	265.0'	2.9'	_____
CL - 17	270.0'	291.8'	21.8'	_____
CL - 18	291.8'	325.5'	31.7'	_____

M. Zurowski

*M. Zurowski*

# DIAMOND DRILL RECORD

 PROPERTY Clayton Mines Limited

 HOLE NO. 6

 SHEET NUMBER 1

 SECTION FROM 0.0' TO 357.0'

 STARTED Nov 20/54

 LATITUDE Line 43/50 E

DATUM \_\_\_\_\_

 COMPLETED Nov 21/54

 DEPARTURE 16/50 E of No. 1 BL BEARING S 60 W (ast)

 ULTIMATE DEPTH 357

 ELEVATION \_\_\_\_\_ DIP 45

PROPOSED DEPTH \_\_\_\_\_

DEPTH FEET	FORMATION	SAMPLE NO.	WIDTH OF SAMPLE	GOLD \$	SLUDGE GOLD \$
0.0 - 8.0	Casing				
8.0 - 61.9	Nepheline Syenite (2)				
61.9 - 72.7	Feldspathoidal Syenite (2B)				
72.7 - 135.0	Nepheline Syenite (2)				
135.0 - 140.0	Feldspathoidal Syenite (2B)				
140.0 - 165.0	Nepheline Syenite (2)				
165.0 - 182.8	Feldspathoidal Syenite (2B) some reddish mineral				
182.8 - 265.3	Nepheline Chlorite Gneiss (3C) gneissosity at 40 to core reddish mineral present.				
265.3 - 273.7	Feldspathoidal Syenite (2B)				
273.7 - 357.0	Nepheline Syenite (2)				
	End of Hole				

 DRILLED BY Canadian Longyear Ltd.

 SIGNED *M. G. ...*

Claymac Mines Limited  
Sample Assay Sheet  
Diamond Drill Hole No. 6

<u>Sample No.</u>	<u>From</u>	<u>To</u>	<u>Core Length</u>	<u>Assay % Niobium</u>
CL-6	165.0'	182.8'	17.8'	_____
CL-7	182.8'	203.0'	20.2'	_____
CL-8	203.0'	223.0'	20.0'	_____
CL-9	223.0'	243.0'	20.0'	_____
CL-10	243.0'	265.3'	22.3'	_____
CL-11	265.3'	273.7'	8.4'	_____

*M. Zurowski*  
M. Zurowski

# DIAMOND DRILL RECORD

PROPERTY Claymac Mines Limited

HOLE NO. 7

SHEET NUMBER 1

SECTION FROM 0.0 TO 270.0

STARTED Nov 23/54

LATITUDE Line 150 S

DATUM \_\_\_\_\_

COMPLETED Nov/24/54

DEPARTURE 19/70 E of No.1 B.L.

BEARING S 60 W (ast)

ULTIMATE DEPTH 270

ELEVATION \_\_\_\_\_

DIP 45

PROPOSED DEPTH \_\_\_\_\_

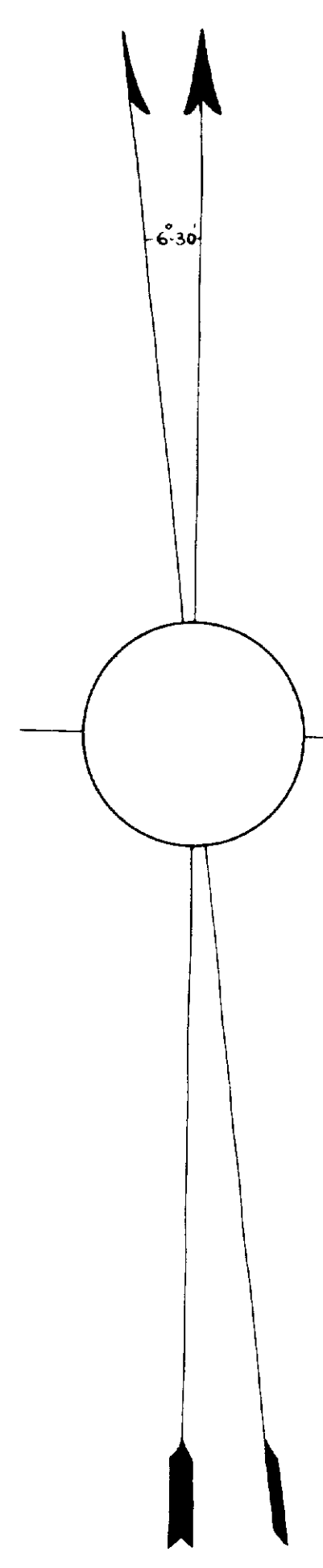
DEPTH FEET	FORMATION	SAMPLE NO.	WIDTH OF SAMPLE	GOLD \$	SLUDGE GOLD \$
0.0 - 12.8	Casing				
12.8 - 17.8	Hornblende Feldspar Gneiss (7) gneissosity at 60				
17.8 - 65.0	Feldspathoidal Syenite (2B) slight gneissosity at 45				
	21.5' - 23.0' lost core				
	44.5' - 45.0' lost core				
65.0 - 109.2	Nepheline Syenite (2)				
109.8 - 112.6	Basic Dike (1A)				
112.6 - 270.0	Nepheline Syenite (2)				
	199.0 - 200.0 - lost core				
	202.0 - 205.0 - lost core				
	<u>Note</u> - hole cemented at 202'				
	<u>End of Hole</u>				



Claymac Mines Limited  
Sample Assay Sheet  
Diamond Drill Hole No. 7

<u>Sample No.</u>	<u>From</u>	<u>To</u>	<u>Core Length</u>	<u>Assay % Niobium</u>
CL-12	17.8'	40.0'	22.5'	_____
CL-13	40.0'	65.0'	25.0'	_____

*M. Zurowski*  
M. Zurowski

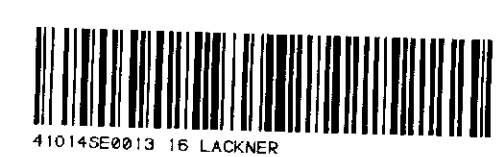


**SYMBOLS**

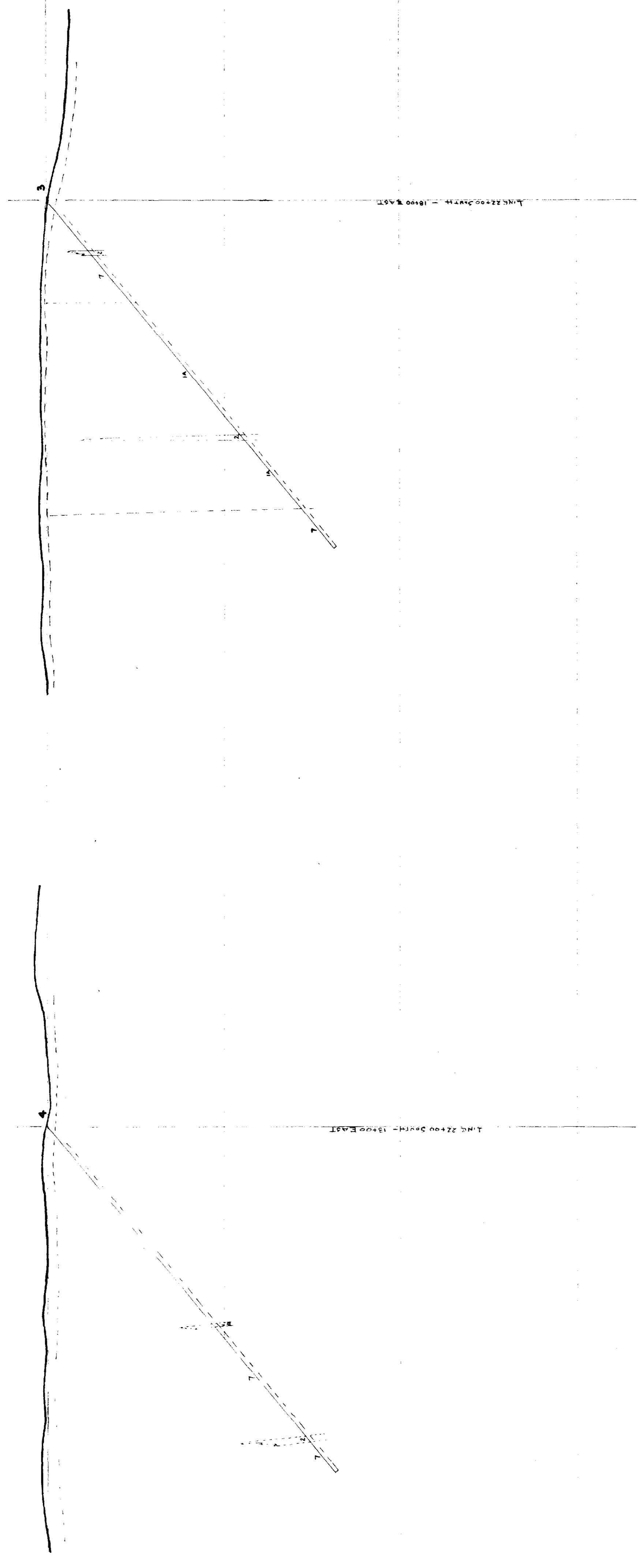
- ◆ DIAMOND DRILL HOLE
- ✦ CLAIM POSTS
- CLAIM LINE
- SURVEYED LINE
- TOWNSHIP LINE
- DISTRICT LINE
- ==== ROAD
- ~ CREEK

**CLAYMAC MINES LIMITED**  
McNAUGHT AND LACKNER TOWNSHIPS, ONTARIO.  
SUDBURY MINING DIVISION  
**SURFACE PLAN**  
OF  
MINING CLAIMS - S-73578 - S-73607 INCLUSIVE  
SCALE - 1" = 300 FT.

*See on  
73578*



WEST (AST.)

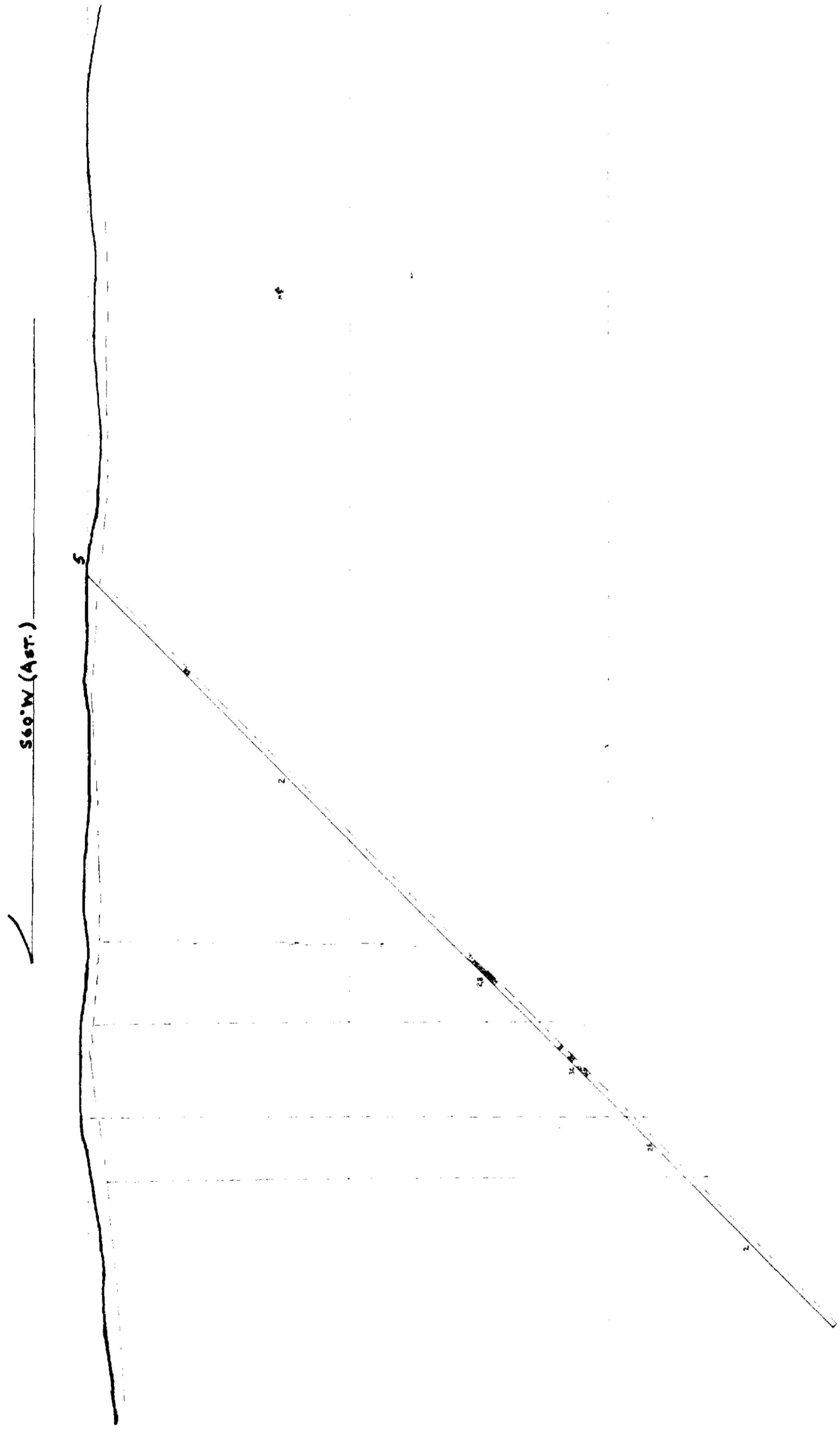


LEGEND

- 1 BASIC DIOBASE (S) LAMPROPHYRE DIKES (D)
- 2 NEPHELINE SYENITE
- 3 NEPHELINE DIORITE (S) NEPHELINE GABBRO (D) AULACONITE ROCKS
- 4 BIRTITE CARBONATE GNEISS
- 5 BIRTITE PROXIMATE GNEISS
- 6 GREENSTONE
- 7 MICHALINDE FELDSPAR GNEISS
- CRYSTALLINE MARBLETE

**CLAYMAC MINES LIMITED**  
 McNAUGHT AND LACKNER TOWNSHIP - ONTARIO  
 VERTICAL SECTION DIAMOND DRILL HOLES 3,4  
 Scale 1" = 40'



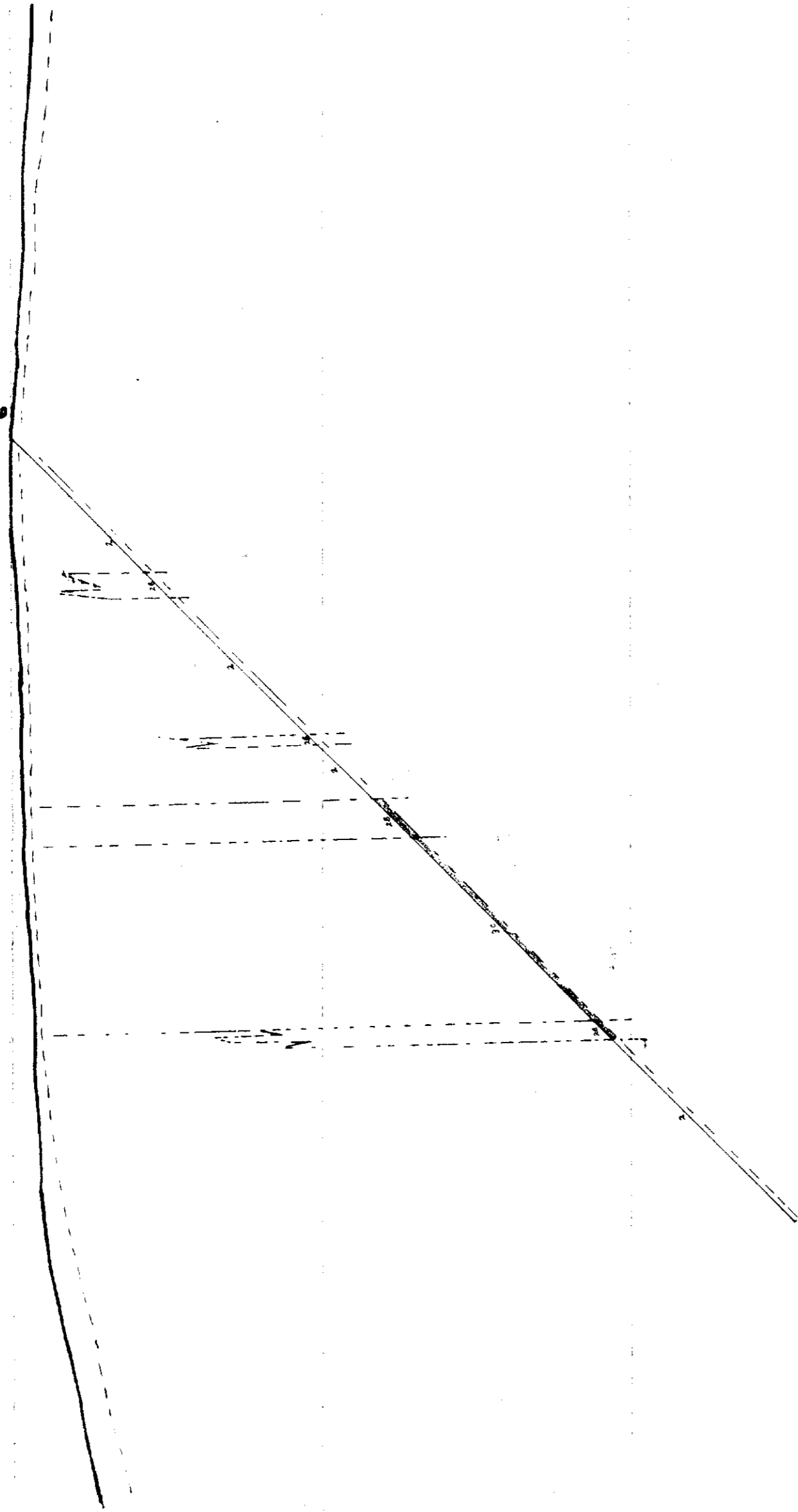


LEGEND

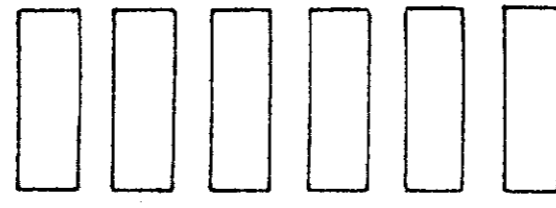

CLAYMAC MINES LIMITED  
 McNAUGHT AND LACKNER TOWNSHIP - ONTARIO  
 VERTICAL SECTION DIAMOND DRILL HOLES 5  
 Scale: 1" = 40'



S 60° W (APT)



LEGEND



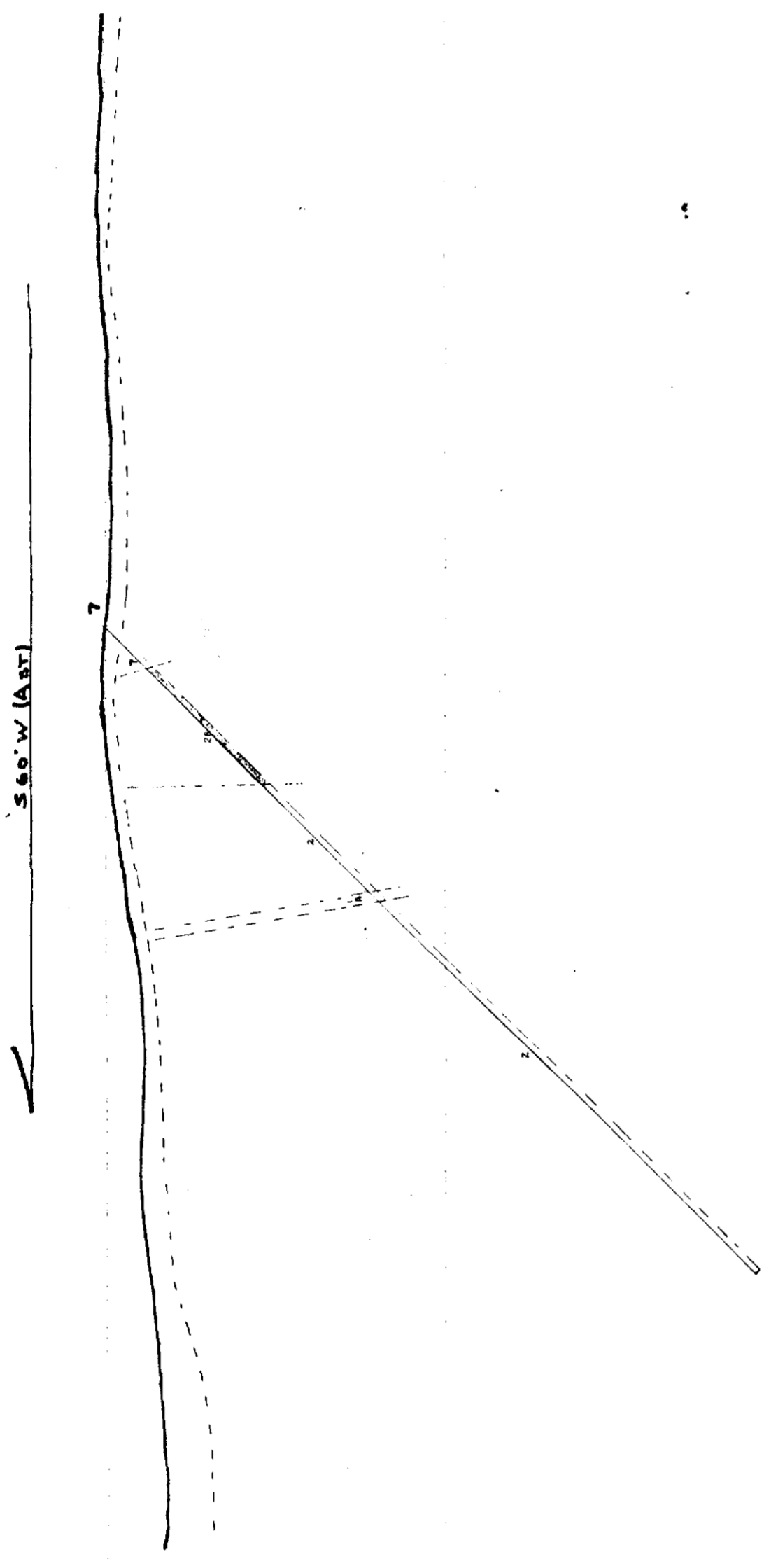
40188210 16 LACKNER

2300

CLAYMAC MINES LIMITED  
McNAUGHT AND LACKNER TOWNSHIPS - ONTARIO

VERTICAL SECTION DIAMOND DRILL HOLES 6

Scale 1" = 40'

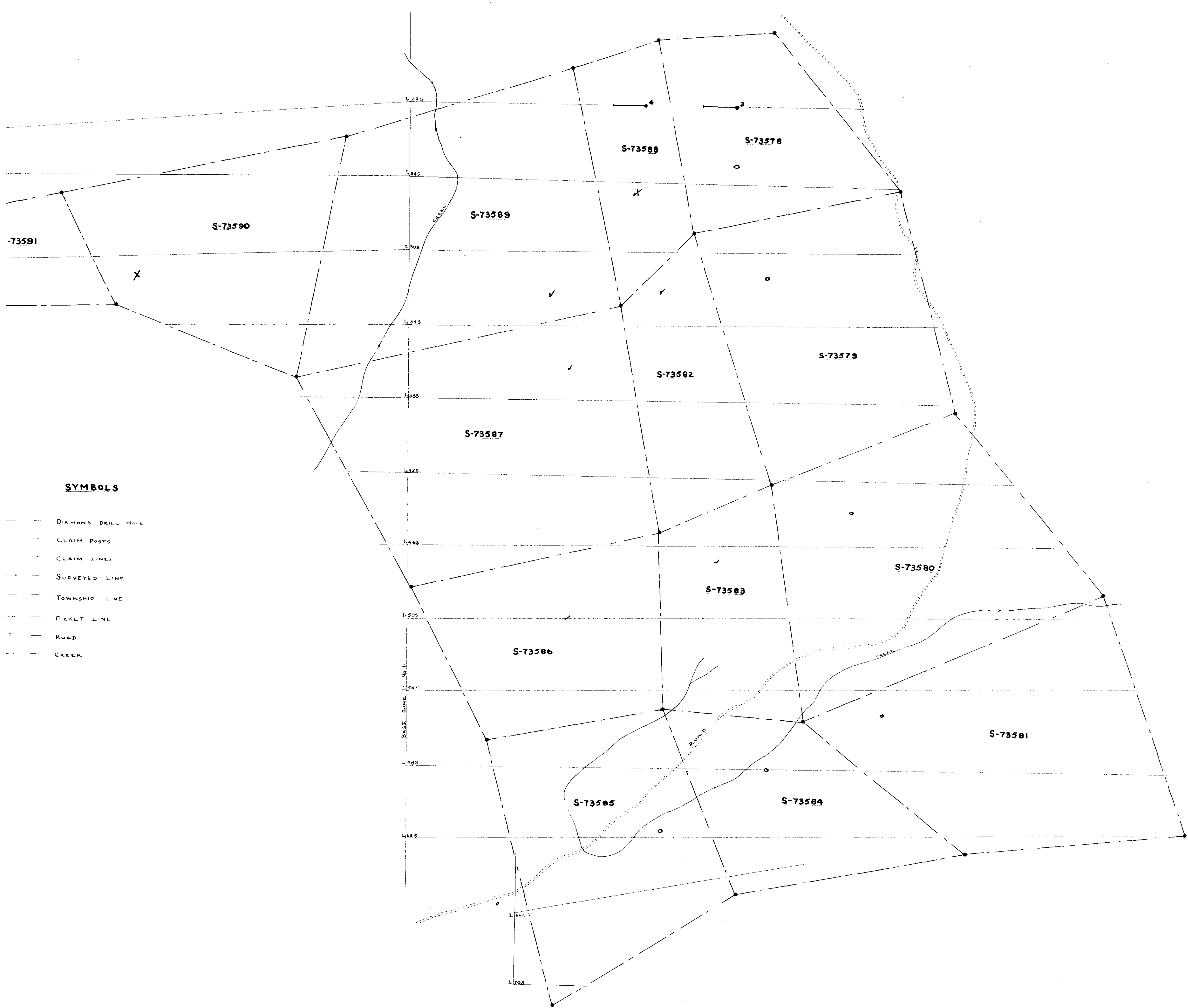
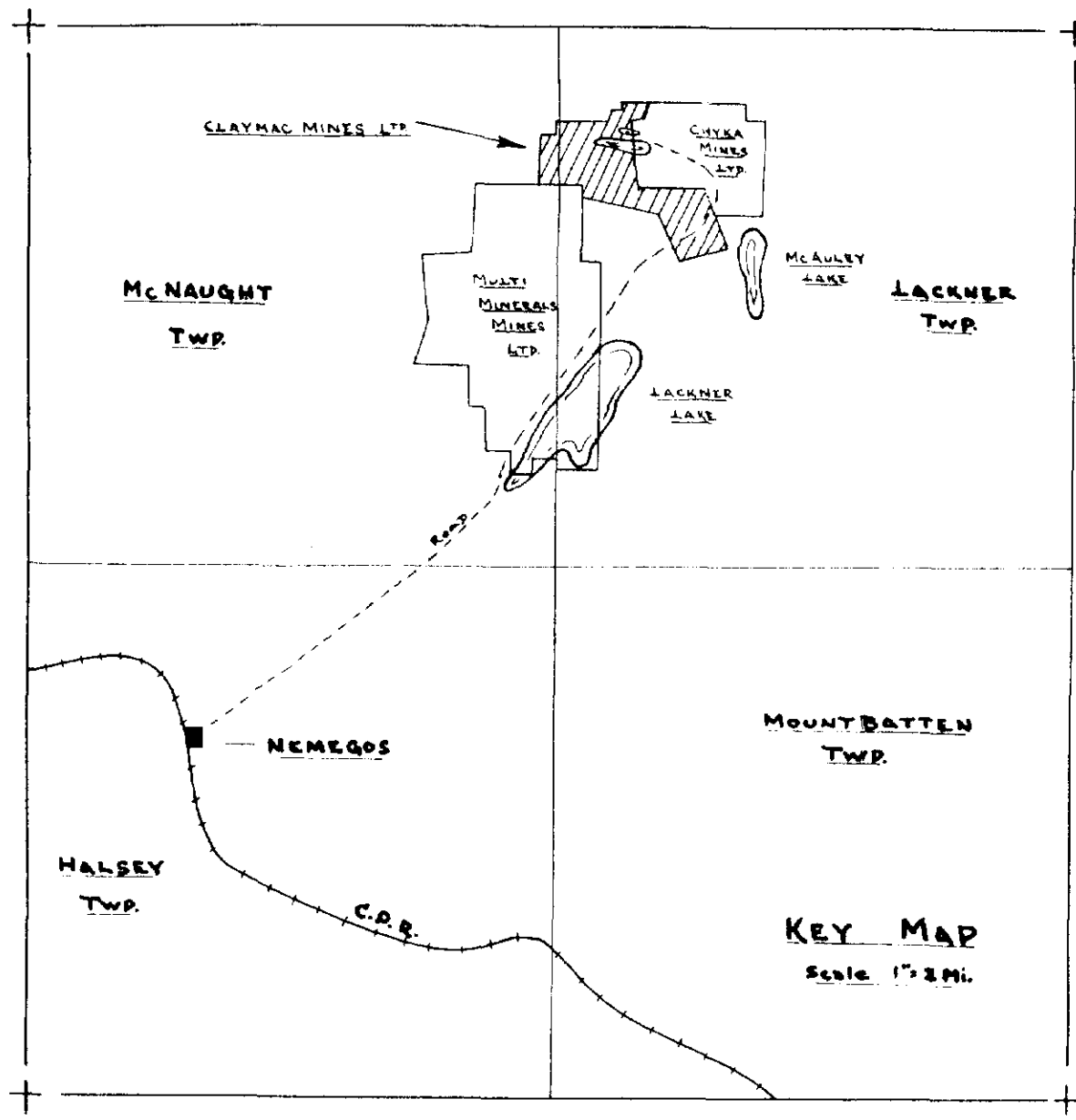
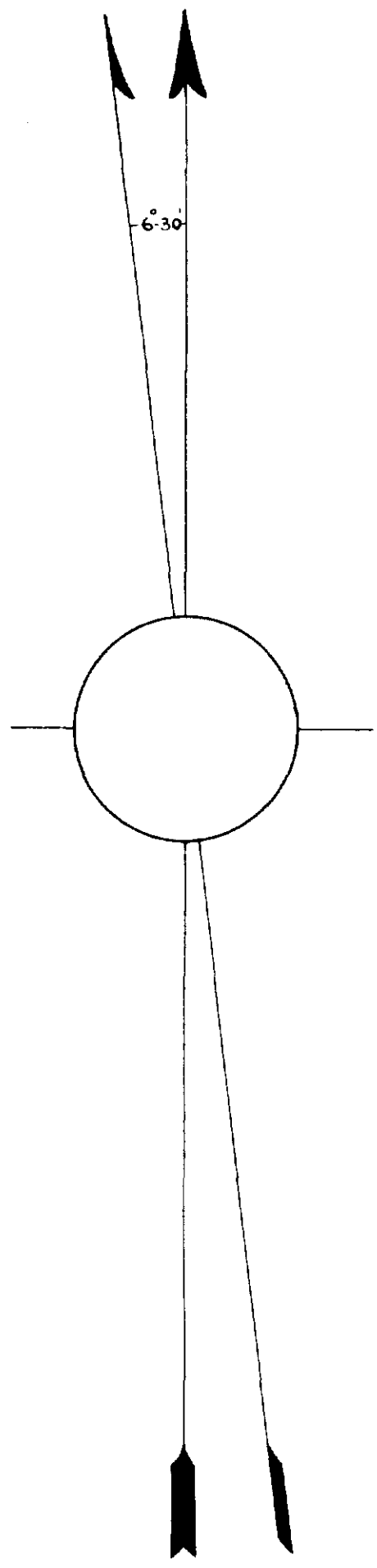


LEGEND

- 
- 
- 
- 
- 
- 

**CLAYMAC MINES LIMITED**  
 McNAUGHT AND LACKNER TOWNSHIP - ONTARIO  
 VERTICAL SECTION DIAMOND DRILL HOLES 7  
 Scale 1" = 40'





**SYMBOLS**

- DIAMOND BELL HOLE
- CLAIM POSTS
- CLAIM LINES
- SURVEYED LINE
- TOWNSHIP LINE
- PICKET LINE
- ROAD
- CREEK