



41015SE0022 2.6471 ROLLO

010

REPORT

on a

GEOCHEMICAL SURVEY

on the 44-claim property of

KENTY RESOURCES LIMITED

in Rollo Township
Porcupine Mining Division
Northeastern Ontario

by

Albert Hopkins
Consulting Mining Geologist

RECEIVED
MAY 6 1981
MINING LANDS SECTION

63A-03

INTRODUCTION:

In late March 1982, the Ontario Geological Survey released a series of maps to cover an "Airborne Electromagnetic and Total Intensity Magnetic ("Mag.") Survey, Swayze Area" by Questor Surveys Limited. This aerial survey covers all or parts of over forty townships, an area of some 1,400 square miles.

Many Magnetic and Electromagnetic ("E.M") anomalies ("anoms.") appear on these aerial maps. One of the most interesting ones consists of up to 3 parallel E.M. conductors striking E-W through the south edge of Rollo and the north edge of Swayze Township. The writer recommended the acquisition of some 70 mining claims by staking, and Rollo Prospecting Syndicate was formed for this purpose.

Our staking party, under Ross Toms, entered the area as soon as possible after breakup in 1982, and he succeeded in staking 31 claims for the Syndicate, to cover these aerial anoms., being cut off by Argus Hollinger Limited and Dejour Mines Limited on the west, Dome Mines Limited or Coppell Township on the east, and Inco and Swayze Resources Limited ground on the south. Later the 6 Dejour claims were optioned, and 7 additional claims staked, to form a rectangular block of ground 1 mile from north to south, by 3 miles from E-W, in the southeast corner of Rollo Township.

There are very few outcrops and no known mineral showings on this property. The area was well prospected for gold in the 1930's, following the discovery of gold less than a mile to the south in Swayze Township by Jay and Jack Kenty in 1931 (The original Kenty gold mine). Therefore it was decided to explore our large property by geochemical ("geochem.") and geophysical ("geophys.") methods, to be followed by diamond drilling ("d.d.").

PROPERTY:

This consists of 44 contiguous unpatented mining claims in the southeast corner of Rollo Township, Porcupine Mining Division, Northeastern Ontario, numbered as follows:

P. 575240 - 243 incl.	=	4 claims
632126 - 139 incl.	=	14 claims
642257 - 259 incl.	=	<u>3 claims</u>
		21 claims

PROPERTY: Continued

Carried Forward	21 claims
642278 - 280 incl.	= 3 claims
650398 - 410 incl.	= 13 claims
672421 - 427 incl.	= <u>7 claims</u>
TOTAL	= 44 claims

LOCATION: N.T.S. 41.0.15

The property, in the S.E. corner of Rollo Township lies in the Swayze gold belt, 72 airmiles (116 km.) SW. of Timmins, 28 airmiles (45km.) S. of Foleyet, a C.N.R. subdivisional point, 35 airmiles (56 km.) due E. of Chapleau, and 44 airmiles (71 km.) WNW. of Gogama, Ontario. The property is $\frac{1}{2}$ mile (0.8 km.) N. of the former small Au-Ag producer, Kenty gold mine, 9 airmiles (14.5 km.) SW. of Sulpetro's former Rundle gold mine, 16 airmiles (26 km.) SW. of Northgate's Orofino gold mine, and 24 airmiles (39 km.) NW. of the former producer, Jerome Gold Mines.

ACCESS:

This property was recently made accessible by motor vehicle, by the building of bridges across Lesage Lake Narrows and Swayze River and the brushing out and bulldozing of old logging roads by contractor for Heron Resources Limited, who are the present owners of the old Kenty gold mine, $\frac{1}{2}$ mile S. of our property, in Swayze Township. One may drive from Foleyet on Highway 101, about 4 miles (6.4 km.) W., and then S. through Ivanhoe Lake park, about 40 miles (64 kms.) on a gravel road, to the property.

A timber company, Orofino Mines, and Sulpetro Minerals keep this road snowplowed during the winter, to the Orofino turn-off, leaving the last 10 miles of our road snowbound at present, in winter, necessitating snowmachines for the last 10 miles.

GENERAL GEOLOGY:

The property lies in the E-W trending Swayze greenstone belt, which is about 28 miles (45 km.) long and 18 miles (29 km.) wide. The rocks are all Precambrian in age, and are steeply-dipping in fold structures, whose axes trend in a sinuous E-W path across the area. The Keewatin rocks include rhyolite, trachyte, dacite, andesite, pillow lava and basalt, as well as tuffs,

GENERAL GEOLOGY: Continued

agglomerates and breccias. The Timiskaming sediments as well as the metavolcanics are intruded by many quartz and felspar porphyries, not unlike the Kirkland Lake geology.

LOCAL GEOLOGY:

Although the property is 95% overburdened, the geology has been estimated through extrapolation from outcrops some distances to the E. and W.

The property is believed to be mainly underlain by an E-W fold, probably the N. limb of an E-W syncline, consisting of sediments and volcanoclastics from 0.25 miles to 0.35 miles (0.48 km.) in width.

PICKET LINE GRID:

A grid of Picket Lines ("P.L.'s") was cut across this property totalling 43.34 line-miles or 69.74 line-kms. The Baseline ("B.L.") strikes 93.5° , with P.L.'s normal to it at 120^{m} intervals. Pickets were chained and labelled at 30^{m} intervals along these lines. The cost of these lines was \$6,853.00.

GENERAL GEOCHEMICAL CONSIDERATIONS:

- (a) There are several sensitive methods for the accurate determination of gold in geological materials. Gold is often unevenly dispersed in its host rocks, so proper sampling procedures are essential.
- (b) Some of the obvious advantages of geochemical prospecting such as the absence of expensive instrumentation, rapid operation and flexibility in the search for different types of ore deposits have been highlighted by the current economic recession and consequently, the need to obtain the most value for limited exploration dollars. Geochemistry is most effective in areas where mineralization is exposed at surface or is relatively close to the surface. However, with the increasing intensity of exploration through ground and remote sensing techniques, the majority of near-surface deposits with

GENERAL GEOCHEMICAL CONSIDERATIONS: Continued

- (b) some visible expression have been identified and strategy must focus on detecting the more deeply concealed targets. Less conventional methods must therefore be considered in the search of buried mineralization.

The objective of geochemical prospecting is, of course, to discover an economic mineral deposit by systematic measurement of one or more chemical properties (generally trace element content) in naturally occurring materials such as rock, soil, stream sediment, water and vegetation. Analytical data is generated to detect abnormal chemical patterns known as anomalies and through interpretation, hopefully, to relate these anomalous patterns to a mineral source.

OUR GEOCHEMICAL PROCEDURES:

- (a) Collection of Samples:

The writer and his assistants collected some 2,970 soil samples from the "A Horizon" (black humus) mainly at 15^m intervals along the P.L.'s. The intermediate stations were located by pacing between the 30 meter picket intervals.

Clean stainless-steel scoops or garden trowels were used for sampling the humus, generally in the top first foot of decomposed vegetation soil. Care was taken to include no clay or sand and a minimum of wood. Samples averaged about ½ pound (225 g.) in weight. Tough new kraft paper bags or special cloth bags were used to contain the samples. These bags were clearly marked with the name of the property, the date, sampler's name or initials, and the sample location co-ordinates, e.g. 300 S., 1,560 E. These co-ordinates became the sample numbers.

- (b) Sample Analyses:

The soil samples were delivered to Assayers (Ontario) Limited in Islington, Toronto, Ontario, and there they were all analysed for Au and Ag, and some also for Cu and Zn. Analyses were reported in the following units:

OUR GEOCHEMICAL PROCEDURES: Continued

(b) Metal	Content In	Assumed B.G.	Minimum Anomalies
Au	ppb.	5 ppb.	5 XBG. or 25 ppb.
Ag	ppm.	0.1 ppm.	10 XBG. or 1 ppm.
Cu	ppm.	10 ppm.	5 XBG. or 50 ppm.
Zn	ppm.	20 ppm.	5 XBG. or 100 ppm.

(c) Plotting and Contouring of Maps:

Two basemaps were drawn, one covering the E. half and the other, the W. half of the property. Analyses are plotted as XBG. on these maps (Scale: 1:2500 or 1" = 208.33' or 64.74^m). Where only Au and Ag were analysed, the analyses are plotted as XBG. thus: - Au-Ag. Where all 4 metals were analysed, they were reported

thus: - $\begin{array}{c|c} \text{Au} & \text{Cu} \\ \text{Ag} & \text{Zn} \end{array}$

The gold Back Grounds only were plotted and contoured, with the following contour intervals:-

10 - 50 XBG.
50 - 100 XBG. (on these 1:2500 Scale sheets)
100 XBG and over.

The property was also mapped for more detail in 32 sheets, scale: 1" = 30^m or 98.425'. These 32 individual sheets have the gold Back Grounds only plotted and contoured with the following contour intervals:-

5 - 10 XBG.
10 - 20 XBG.
20 - 50 XBG.
50 - 100 XBG.
100 XBG. and over.

DISCUSSION OF SURVEY RESULTS:

There are 54 gold anom. contoured on the property. Of these, the W. $\frac{1}{2}$ has only 14 gold anom. of between 10 and 49 XBG. While the E. $\frac{1}{2}$ has 40 anom. of which 4 rise higher than 50 XBG. and 6 more higher than 100 XBG. It would thus appear that the E. half of the property probably contains more gold than the W. half. This may be due to porphyry intrusions, the possible source of the gold, being mapped to date to the SE. of our property (by Rickaby) and S. of the E. half of the property (on the

DISCUSSION OF SURVEY RESULTS: Continued

Heron Resources Limited property).

At the very time of writing this report, preliminary field results have arrived from the Induced Polarization ("I.P.") survey being performed on the E. ½ of this same property by Rayan Exploration Limited. They have obtained various Chargeability and Resistivity anom. and given them numbers. Six of their anom. conform quite nicely with six of ours, so I shall use their same Anomaly Numbers 1 to 7. Their I.P. report is being prepared quite separately from this one, and will soon be available.

Anomaly # 1:

This comprises several separate geochem. anom. stretching from (145^m S., 600^m E.) to 150^m S., 840^m E.), with readings up to 141 XBG. Au and 129 XBG. Ag. This roughly coincides with I.P. medium Chargeability Anom. # 1, and a low Resistivity Zone. It should make a high drill target priority.

Anomaly # 2:

The I.P. anom. stretches from (615 S., 960 E.) to (810 S. 1920 E.). Its Chargeability is high and very wide, centred at (750 S., 1560 E.). Its Resistivity is very low. It could be an E.S.E. extension of Anom. # 1. It trends E.S.E. across the township line, from the Kenty to the Swayze Resources Limited property, where the geochem. anom. gives readings up to 29 X Au. BG. and 9 X Au. BG. It could be caused by graphite or massive sulfids.

Here a joint D.D.H. with Swayze Resources Limited might be considered. This anom. is probably one of the published aerial conductors.

Anomaly # 3:

This area has the largest and widest series of strong geochem. anom. on the property. They spread from McCollum Pond at the N. boundary (S. boundary of Hanson Lake Resources Limited) i.e. from (900 N., 1560 E.) to (660 N., 1560 E.) a width of 240^m and from (915 N., 1320 E.) to 870 N., 1920 E.) a length of 600^m.

DISCUSSION OF SURVEY RESULTS: ContinuedAnomaly # 3: Continued

Approximately mid-way in this geochem. anom. is a very weak chargeability but High resistivity anom., at 725 N., 1560 E., suggesting a siliceous or wide quartz zone.

This should be one of the top drill targets.

I.P. Anomaly # 4 And 4a:

These do not conform with any geochem. anom. However I.P. # 4b is close to a medium geochem. anom. at 1560 E., 30 N. The I.P. at (70 N., 1680 E.) has strong or high chargeability and high resistivity, denoting a possible siliceous or quartz zone with disseminated sulfids. This is a candidate for a drill hole.

Anomaly # 5:

One of the highest geochem. Au readings on the property occurs on the E. boundary or township line at (45 N., 2466 E.) (260 XBG. Au.), and is open to the E. into Coppell Township (Dome Exploration Limited). This pretty well coincides with I.P. anom. # 5, (15 N., 2400 E.). The I.P. anom. extends W. from (15 S., 2280 E.) and then again # 5a anom. at 15 S., 2040 E.). The I.P. anom. have weak chargeability but high resistivity suggesting very low sulfids, and a siliceous or quartz zone. This good drill target on the E. property border should be shared with Dome Exploration Limited.

Anomaly # 6:

This is mainly a massive I.P. Chargeability Anomaly stretching right across the E. half of the property, conforming with the main published aerial E.M. conductor. It has widths up to 350^m, and very low resistivity readings. It therefore appears to be a sedimentary band possibly argillite, containing much graphite, a possibility of sulfids, but low in quartz.

In its great length there are only 4 small geochem. anom. of low to medium strength in gold, i.e. at (90 N., 120 E.), (360 S. 1560 E.), (330 S., 2160 E.), and (300 S., Township Line), not a very high priority!

DISCUSSION OF SURVEY RESULTS: ContinuedAnomaly # 7:

This has no geochem. expression, but is a good I.P. anom. It occurs at (15 N., 1080 E.), and has a high Chargeability and a medium high Resistivity.

This might be called a drill target.

There are about 40 other geochem. anom., but they are either too low in Au to have drilling priority, or they do not coincide with I.P. anom., e.g. at 480 S., on the E. township line. This geochem. anom. gives 143 X Au BG., and might be of interest to Dome Exploration Limited.

CONCLUSIONS:

1. This geochem. survey of nearly 3,000 "A Horizon" soil samples covering the 44 claim Kenty Resources Limited property at fairly close intervals, was analysed for Au and Ag, (plus a few Cu's and Zn's.)
2. The survey indicated no base metal ore deposits, but gave some 54 Au anom., some of which carried Ag values.
3. The E. half of the property contains 40 of the 54 anomalies, including the largest and highest in gold. The W. half of the property probably lacks porphyry intrusives, the likely source of the gold.
4. This property has extensive overburden, and no surface mineral showings. The former Kenty gold mine lies half a mile S. of the E. half of our property.
5. Six of the geochem. anomalies coincide closely with six anomalies from an I.P. survey completed by Rayan Exploration Limited on the same property very recently.
6. These 6 anomalies qualify as prime drill targets in the writer's opinion, and warrant early drilling for gold.
7. Two of these anomalies cross the property boundary and these drill holes should be shared by our neighbours.

RECOMMENDATIONS:

It is recommended by the writer that: -

RECOMMENDATIONS: Continued

1. A minimum of 1,500 feet of "BQ" diamond drilling be performed as soon as possible, as detailed in the following Table I.
2. Dome Exploration Limited should be asked to pay for half the cost of drilling Anom. # 5, and Swayze Resources Limited that of Anom. # 2.
3. Further drilling would depend on the results of the above recommended drilling.

All of which is respectfully submitted,

Albert Hopkins

Albert Hopkins, B.A. Sc., F.G.A.C.,
M.C.I.M.,

Consulting Mining Geologist,

A Director of Kenty Resources Limited,
and a Founder - Promoter & Shareholder.

Timmins, Ontario.
4 February 1984

ATTACHED MAPS & TABLES:

- 2 Plans of E. and W. halves of the 44 claim property of Kenty Resources Limited, Rollo Township, Ontario, showing Geochemical Survey "A Horizon" Humus Sample Analyses for Au, and Ag in XBG. Scale: 1:2500.
- 32 sheets showing same results on a larger scale, 1" = 30^m with anomalies contoured, 5 XBG. up to 100 XBG. and over.

TABLE "A" summarizing most important anomalies, D.D. Targets and D.D.H. Collar Co-ordinates.



TABLE I

KENTY'S ANOMALIES, PRIORITIES AND DIAMOND DRILL HOLES

ANOM. #	CO-ORDINATES		INTENSITIES		GEOCHEMICAL	D.D.H. COLLARS CO-ORDINATES		PRIORITY NO.
	m. N. or S.	m. EAST	CHARGEABILITY	RESISTIVITY		m. N. or S.	m. EAST	
1	520 ^m S. to 515 ^m S.	600 ^m E. 880 ^m E.	Medium	Low	Several highs	480 ^m S.	720 ^m E.	B
2	615 ^m S. to 810 ^m S.	960 ^m E. 1800 ^m E.	At 750 ^m S., 1560 ^m E., it is very wide.	Very Low Could be E. extension of Anom. # 1.	Up to 29 XBG. A joint hole with Swayze Resources Limited? Probably graph- ite or sulfs.	780 ^m S., 1920 ^m E.		E
3	725 ^m N.	-1560 ^m E.	Very weak.	High	High. Could be Quartz with very minor sulfsids.	790 ^m N.	1560 ^m E.	A
4	260 ^m N.	- 480 ^m E.	Medium	High	None. Probably seds. with sile- ceous with sulfs. & graphite.	-	-	-
4a	195 ^m N.	- 960 ^m E.	High		None			-
4b	70 ^m N.	-1680 ^m E.	Strong & High	High	None exactly here, but med. anom. to W. where Dissem. sulfs. mapped.	110 ^m N.	1680 ^m E.	D
5a	15 ^m S. to 15 ^m S.	2040 ^m E. 2280 ^m E.	Weak.	2 Highs i.e. #5 & 5a	Between 2 very geo- chem. highs, # 5 & 5a	70 ^m N., 2400 ^m E.		? A joint hole with Dome Exploration-C
5	45 ^m N.	-2500 ^m E.	Geochemical	ask Dome if they would split cost of 1 Hole on Twp. Line				
6	100 ^m N. - 0-0 ^m - 315 ^m S.	0-0 ^m E. 720 ^m E. 2400 ^m E.	Wide high con- ductivity-very high. Is prob- ably aerial E.M. Conductor zone published by O.M.N.R. Swayze survey.	Probably argillites with graphite. Very low.	None			-
7	15 ^m N.	-1080 ^m E.	High	Medium High	None	55 ^m N.	-1080 ^m E.	E

TOTAL: 6 D.D. holes totalling ca. 1,800 ft. Each hole to strike S. along the P.L.'s, and dip - 48° S.

A. Hopkins.
Timmins, Ontario
A. Hopkins



ASSAYERS (ONTARIO) LIMITED

33 CHAUNCEY AVENUE TORONTO, ONTARIO M8Z 2Z2 · TELEPHONE (416) 239-3527

Certificate of Analysis

Certificate No. KR-05/32/#2660

Date: November 28, 1983

Received _____ 40 Samples of Soils

Submitted by Kenty Resources Limited Att'n: Mr. A. Hopkins
c.c: Mr. C. Hillmer

Sample No.	Au ppb	Ag ppm	Sample No.	Au ppb	Ag ppm
0-0 330N	6	<.1	120E 120N	8	<.1
360N	<5	<.1	150N	<5	<.1
0-0 390N	<5	<.1	180N	<5	<.1
120E BL	7	<.1	210N	12	.2
30S	5	<.1	240N	14	<.1
60S	13 †	<.1	270N	8	<.1
90S	51 †	<.1	300N	29	<.1
120S	66 †	<.1	330N	27	<.1
150S	10	<.1	360N	<5	<.1
180S	5	<.1	390N	15	<.1
210S	6	<.1	120E 410N	<5	<.1
240S	19 †	<.1	240E BLA	<5	<.1
270S	38 †	<.1	BLB	<5	<.1
300S	31 †	<.1	30S	32	<.1
330S	42 †	<.1	60S	<5	<.1
360S	21 †	<.1	90S	32	<.1
120E 390S	17 †	<.1	120S	19	<.1
120E 30N	52 †	<.1	150S	6	<.1
60N	23 †	<.1	180S	8	<.1
120E 90N	54 †	<.1	240E 210S	29	<.1

ASSAYERS (ONTARIO) LIMITED

Per _____



ASSAYERS (ONTARIO) LIMITED

33 CHAUNCEY AVENUE TORONTO, ONTARIO M8Z 2Z2 · TELEPHONE (416) 239-3527

Certificate of Analysis

Certificate No. KR-05/34/#2660

Date: November 28, 1983

Received _____ 40 Samples of Soils

Submitted by Kenty Resources Limited

Att'n: Mr. A. Hopkins

c.c: Mr. C. Hillmer

Sample No.	Au ppb	Ag ppm	Sample No.	Au ppb	Ag ppm
240E 240S	<5	.1	360E BLA	<5	<.1
30N	<5	<.1	BLB	<5	<.1
60N	<5	<.1	30S	<5	<.1
90N	<5	<.1	60S	<5	<.1
120N	5	<.1	90S	6	.2
150N	6	<.1	120S	11	.2
180N	8	<.1	150S	<5	.2
210N	13	<.1	180S	<5	<.1
240N	6	<.1	210S	<5	<.1
270N	16	<.1	240S	<5	<.1
300N	<5	<.1	270S	6	<.1
330N	<5	<.1	300S	19	<.1
360N	24	<.1	330S	<5	<.1
393N	<5	<.1	360S	<5	<.1
270S	<5	<.1	390S	5	.1
300S	5	<.1	570S	10	<.1
330S	6	<.1	600S	15	<.1
360S	11	<.1	630S	20	<.1
390S	<5	<.1	660S	14	<.1
240E 480S	<5	<.1	360E 690S	11	<.1

ASSAYERS (ONTARIO) LIMITED

Per _____



ASSAYERS (ONTARIO) LIMITED

33 CHAUNCEY AVENUE TORONTO, ONTARIO M8Z 2Z2 · TELEPHONE (416) 239-3527

Certificate of Analysis

Certificate No. KR-05/36/#2660 Date: November 30, 1983
 Received _____ 40 Samples of Soils
 Submitted by Kenty Resources Limited Att'n: Mr. A. Hopkins
 c.c: Mr. C. Hillmer

Sample No.	Au ppb	Ag ppm	Sample No.	Au ppb	Ag ppm
360E 720S	<5	.6	360E 390N	<5	<.1
750S	5	.4	480E BLA	17	<.1
780S	7	.4	BLB	<5	.3
310S	<5	.4	30S	13	.4
340S	<5	.3	60S	18	.2
370S	<5	.1	90S	27	.2
885S	<5	.3	120S	17	.2
30N	<5	<.1	150S	22	.3
60N	7	.1	180S	7	.2
90N	<5	.1	210S	25	.3
120N	<5	.3	240S	21	.3
150N	<5	<.1	270S	<5	.3
180N	<5	<.1	300S	<5	<.1
210N	<5	<.1	330S	6	<.1
240N	<5	<.1	360S	27	.3
270NA	<5	<.1	390S	<5	.3
270NB	<5	<.1	30N	<5	.4
300N	5	<.1	60N	<5	.4
330N	<5	<.1	90N	<5	.5
360E 360N	12	<.1	480E 120N	27	.4

ASSAYERS (ONTARIO) LIMITED

Per _____



ASSAYERS (ONTARIO) LIMITED

33 CHAUNCEY AVENUE TORONTO, ONTARIO M8Z 2Z2 · TELEPHONE (416) 239-3527

Certificate of Analysis

Certificate No. KR-05/38/#2660

Date: November 30, 1983

Received _____ AS Samples of Soils

Submitted by Kenty Resources Limited Att'n: Mr. A. Hopkins
c.c: Mr. C. Hillmer

Sample No.	Au ppb	Ag ppm	Sample No.	Au ppb	Au ppm
480E 150N	<5	<.1	120E 570S	10	<.1
180N	10	<.1	600S	51	<.1
210N	9	<.1	630S	<5	.2
240N	7	<.1	660S	<5	<.1
270N	<5	<.1	690S	10	<.1
300N	<5	<.1	120E 720S	13	.1
330N	<5	<.1	240E 570S	15	<.1
360N	<5	<.1	600S	14	.2
390N	<5	<.1	630S	<5	.1
570N	<5	.1	660S	<5	.1
600S	<5	.2	690S	<5	.2
630S	<5	<.1	720S	<5	.1
660S	8	<.1	750S	7	<.1
690S	<5	<.1	780S	18	.1
720S	<5	<.1	810S	25	.3
750S	<5	<.1	340S	10	.3
780S	6	<.1	870S	14	.1
810S	N.S.S.	N.S.S.	895S	23	<.1
840S	<5	.4	240E 930S	10	<.1
480E 833S	<5	<.1	500E 3LA	14	.2

ASSAYERS (ONTARIO) LIMITED

Per _____



ASSAYERS (ONTARIO) LIMITED

33 CHAUNCEY AVENUE TORONTO, ONTARIO M8Z 2Z2 · TELEPHONE (416) 239-3527

Certificate of Analysis

Certificate No. KR-05/30/#2660 Date: November 28, 1983
 Received duplicate 200 Samples of Soils
 Submitted by Kenty Resources Limited Att'n: Mr. A. Hopkins
 c.c: Mr. C. Hillmer

Sample No.	Au ppb	Ag ppm	Sample No.	Au ppb	Ag ppm
240W 750W	<5	<.1	120W 600N	9	<.1
780W	<5	<.1	630N	18	<.1
240W 790W	<5	<.1	660N	<5	<.1
120W BL	27 ✓	<.1	690N	12	<.1
30N	24 ✓	<.1	720N	<5	<.1
60N	11	<.1	750N	<5	<.1
90N	7	<.1	780N	6	<.1
120N	30 ✓	<.1	810N	12	<.1
150N	17	<.1	120W 840N	<5	<.1
180N	5	<.1	0-0 BL	<5	<.1
210N	5	<.1	30N	11	<.1
240N	<5	<.1	60N	47	<.1
270N	7	<.1	90N	17	<.1
300N	<5	<.1	120N	33 ✕	<.1
330N	33 ✓	<.1	150N	<5	<.1
360N	14	<.1	180N	<5	<.1
390N	<5	<.1	210N	37 ✕	<.1
420N	55 †	<.1	240N	45 ✕	<.1
540N	93 †	<.1	270N	14 L	<.1
120W 570N	44 †	<.1	0-0 300N	<5	<.1

ASSAYERS (ONTARIO) LIMITED

Per 



ASSAYERS (ONTARIO) LIMITED

33 CHAUNCEY AVENUE TORONTO, ONTARIO M8Z 2Z2 · TELEPHONE (416) 239-3527

Certificate of Analysis

Certificate No. KR-05/32/#2660

Date: November 28, 1983

Received _____

Samples of Soils

Submitted by Kenty Resources Limited

Att'n: Mr. A. Hopkins

c.c: Mr. C. Hillmer

Sample No.	Au ppb	Ag ppm	Sample No.	Au ppb	Ag ppm
0-0 330N	6	<.1	120E 120N	8	<.1
360N	<5	<.1	150N	<5	<.1
0-0 390N	<5	<.1	180N	<5	<.1
120E BL	7	<.1	210N	12	.2
30S	5	<.1	240N	14	<.1
60S	13 ↓	<.1	270N	8	<.1
90S	51 ↓	<.1	300N	29	<.1
120S	66 ↓	<.1	330N	27	<.1
150S	10	<.1	360N	<5	<.1
180S	5	<.1	390N	15	<.1
210S	6	<.1	120E 410N	<5	<.1
240S	19 ↓	<.1	240E BLA	<5	<.1
270S	38 ↓	<.1	BLB	<5	<.1
300S	31 ↓	<.1	30S	32	<.1
330S	42 ↓	<.1	60S	<5	<.1
360S	21 ↓	<.1	90S	32	<.1
120E 390S	17 ↓	<.1	120S	19	<.1
120E 30N	52 ↓	<.1	150S	6	<.1
60N	23 ↓	<.1	180S	8	<.1
120E 90N	54 ↓	<.1	240E 210S	29	<.1

ASSAYERS (ONTARIO) LIMITED

Per _____



ASSAYERS (ONTARIO) LIMITED

33 CHAUNCEY AVENUE TORONTO, ONTARIO M8Z 2Z2 · TELEPHONE (416) 239-3527

Certificate of Analysis

Certificate No. KR-05/34/#2660

Date: November 28, 1983

Received _____ Samples of Soils

Submitted by Kenty Resources Limited Att'n: Mr. A. Hopkins

c.c: Mr. C. Hillmer

Sample No.	Au ppb	Ag ppm	Sample No.	Au ppb	Ag ppm
240E 240S	<5	.1	360E BLA	<5	<.1
30N	<5	<.1	BLB	<5	<.1
60N	<5	<.1	30S	<5	<.1
90N	<5	<.1	60S	<5	<.1
120N	5	<.1	90S	6	.2
150N	6	<.1	120S	11	.2
180N	8	<.1	150S	<5	.2
210N	13	<.1	180S	<5	<.1
240N	6	<.1	210S	<5	<.1
270N	16	<.1	240S	<5	<.1
300N	<5	<.1	270S	6	<.1
330N	<5	<.1	300S	19	<.1
360N	24	<.1	330S	<5	<.1
393N	<5	<.1	360S	<5	<.1
270S	<5	<.1	390S	5	.1
300S	5	<.1	570S	10	<.1
330S	6	<.1	600S	15	<.1
360S	11	<.1	630S	20	<.1
390S	<5	<.1	660S	14	<.1
240E 480S	<5	<.1	360E 690S	11	<.1

ASSAYERS (ONTARIO) LIMITED

Per _____



ASSAYERS (ONTARIO) LIMITED

33 CHAUNCEY AVENUE TORONTO, ONTARIO M8Z 2Z2 · TELEPHONE (416) 239-3527

Certificate of Analysis

Certificate No. KR-05/36/#2660

Date: November 30, 1983

Received _____ Samples of Soils

Submitted by Kenty Resources Limited Att'n: Mr. A. Hopkins
c.c: Mr. C. Hillmer

Sample No.	Au ppb	Ag ppm	Sample No.	Au ppb	Ag ppm
360E 720S	<5	.6	360E 390N	<5	<.1
750S	5	.4	480E BLA	17	<.1
780S	7	.4	BLB	<5	.3
810S	<5	.4	30S	13	.4
840S	<5	.3	60S	18	.2
870S	<5	.1	90S	27	.2
885S	<5	.3	120S	17	.2
30N	<5	<.1	150S	22	.3
60N	7	.1	180S	7	.2
90N	<5	.1	210S	25	.3
120N	<5	.3	240S	21	.3
150N	<5	<.1	270S	<5	.3
180N	<5	<.1	300S	<5	<.1
210N	<5	<.1	330S	6	<.1
240N	<5	<.1	360S	27	.3
270NA	<5	<.1	390S	<5	.3
270NB	<5	<.1	30N	<5	.4
300N	5	<.1	60N	<5	.4
330N	<5	<.1	90N	<5	.5
360E 360N	12	<.1	480E 120N	27	.4

ASSAYERS (ONTARIO) LIMITED

Per _____



ASSAYERS (ONTARIO) LIMITED

33 CHAUNCEY AVENUE TORONTO, ONTARIO M8Z 2Z2 · TELEPHONE (416) 239-3527

Certificate of Analysis

Certificate No. KR-05/38/#2660

Date: November 30, 1983

Received _____ Samples of Soils

Submitted by Kenty Resources Limited Att'n: Mr. A. Hopkins
c.c: Mr. C. Hillmer

Sample No.	Au ppb	Ag ppm	Sample No.	Au ppb	Ag ppm
480E 150N	<5	<.1	120E 570S	10	<.1
180N	10	<.1	600S	51	<.1
210N	9	<.1	630S	<5	.2
240N	7	<.1	660S	<5	<.1
270N	<5	<.1	690S	10	<.1
300N	<5	<.1	120E 720S	13	.1
330N	<5	<.1	240E 570S	15	<.1
360N	<5	<.1	600S	14	.2
390N	<5	<.1	630S	<5	.1
570N	<5	.1	660S	<5	.1
600S	<5	.2	690S	<5	.2
630S	<5	<.1	720S	<5	.1
660S	8	<.1	750S	7	<.1
690S	<5	<.1	780S	18	.1
720S	<5	<.1	810S	25	.3
750S	<5	<.1	840S	10	.3
780S	6	<.1	870S	14	.1
810S	N.S.S.	N.S.S.	895S	23	<.1
840S	<5	.4	240E 930S	10	<.1
480E 883S	<5	<.1	600E 3LA	14	.2

ASSAYERS (ONTARIO) LIMITED

Per _____



ASSAYERS (ONTARIO) LIMITED

33 CHAUNCEY AVENUE TORONTO, ONTARIO M8Z 2Z2 · TELEPHONE (416) 239-3527

Certificate of Analysis

Certificate No. KR-05/2591

Date: November 7, 1983

Received _____

Samples of Soils

Submitted by Kenty Resources Limited

Att'n: Mr. C. Hillmer
Mr. A. Hopkins

Sample No.	Au ppb	Ag ppm	Sample No.	Au ppb	Ag ppm
2160 W BL	<5	<.1	2160 W 600 N	<5	.3
30 N	<5	<.1	630 N	<5	.2
60 N	5	.2	660 N	<5	<.1
90 N	<5	<.1	690 N	15	.7
120 N	10	<.1	720 N	5	.1
150 N	<5	.1	2160 W 735 N	<5	<.1
180 N	9	.1	2040 W BL	13	<.1
210 N	<5	<.1	30 S	17	.1
240 N	<5	<.1	60 S	<5	<.1
270 N	<5	.2	90 S	<5	<.1
300 N	12	.2	120 S	8	.3
330 N	<5	<.1	150 S	18	<.1
360 N	<5	<.1	180 S	6	<.1
390 N	<5	<.1	210 S	30	.3
420 N	<5	.2	240 S	15	.2
450 N	<5	<.1	270 S	20	.2
480 N	<5	<.1	288 S	29	.1
510 N	<5	<.1	30 N	17	<.1
540 N	5	<.1	60 N	15	<.1
2160 W 570 N	<5	.2	2040 W 90 N	21	<.1

ASSAYERS (ONTARIO) LIMITED

Per _____



ASSAYERS (ONTARIO) LIMITED

33 CHAUNCEY AVENUE TORONTO, ONTARIO M8Z 2Z2 · TELEPHONE (416) 239-3527

Certificate of Analysis

Certificate No. KR-05/#2591

Date: November 7, 1983

Received _____

Samples of Soils

Submitted by Kenty Resources Limited

Att'n: Mr. C. Hillmer
Mr. A. Hopkins

Sample No.	Au ppb	Ag ppm	Sample No.	Au ppb	Ag ppm
2040 W 120N	<5	.1	2040 W 720N	<5	<.1
150N	5	.1	2040 W 750N	<5	.2
180N	7	.4	1920 W BL	<5	<.1
210N	<5	.1	30S	<5	.4
240N	<5	.1	60S	<5	<.1
270N	88	<.1	90S	7	<.1
300N	6	.1	120S	<5	<.1
330N	8	<.1	150S	<5	<.1
360N	24	.2	180S	<5	<.1
390N	9	<.1	210S	<5	<.1
420N	8	.2	240S	<5	<.1
450N	<5	.1	255S	<5	<.1
480N	<5	.2	285S	<5	<.1
510N	<5	.1	300S	<5	<.1
540N	<5	.4	330S	<5	<.1
570N	<5	.2	360S	<5	<.1
600N	<5	.2	390S	<5	<.1
630N	39	.3	420S	<5	<.1
660N	<5	<.1	450S	<5	<.1
2040 W 690N	18	<.1	1920 W 480S	<5	<.1

ASSAYERS (ONTARIO) LIMITED

Per _____



ASSAYERS (ONTARIO) LIMITED

33 CHAUNCEY AVENUE TORONTO, ONTARIO M8Z 2Z2 · TELEPHONE (416) 239-3527

Certificate of Analysis

Certificate No. KR-05/#2591 Date: November 7, 1983
Received _____ Samples of Soils
Submitted by Kenty Resources Limited Att'n: Mr. C. Hillmer
Mr. A. Hopkins

Sample No.	Au ppb	Ag ppm
1920 W 510S	<5	.3
540S	<5	<.1
570S	<5	.1
600S	<5	.1
630S	9	.2
660S	9	<.1
690S	29	.1
720S	8	<.1
750S	5	<.1
780S	17	<.1
810S	<5	<.1
840S	<5	<.1
870S	<5	<.1
915S	<5	<.1
30N	<5	<.1
60N	N.S.	N.S.
90N	<5	.4
120N	<5	.3
150N	<5	<.1
1920 W 180N	6	.2

ASSAYERS (ONTARIO) LIMITED

Per _____



ASSAYERS (ONTARIO) LIMITED

33 CHAUNCEY AVENUE TORONTO, ONTARIO M8Z 2Z2 · TELEPHONE (416) 239-3527

Certificate of Analysis

Certificate No. KR-05/2591

Date: November 14, 1983

Received _____

Samples of Soils

Submitted by Kenty Resources Limited

Att'n: Mr. A. Hopkins
Mr. C. Hillier

Sample No.	Au ppb	Ag ppm	Sample No.	Au ppb	Ag ppm
1920 W 210N	<5	.1	1800 W 60S	<5	.2
240N	<5	.1	90S	16	<.1
270N	<5	.2	120S	22	<.1
300N	<5	.1	150S	16	.1
330N	7	.3	180S	<5	.1
360N	<5	.2	210S	<5	<.1
390N	<5	.2	240S	21	.1
420N	10	.1	270S	<5	.1
450N	8	.3	285S	<5	.1
480N	14	.4	315S	<5	.1
510N	6	.1	330S	<5	.1
540N	10	<.1	360S	<5	<.1
570N	12	<.1	390S	<5	.1
600N	6	<.1	420S	5	.1
630N	<5	<.1	450S	17	.1
660N	5	<.1	480S	<5	.2
690N	5	<.1	510S	<5	<.1
1920 W 720N	5	<.1	540S	5	.1
1800 W BL	7	<.1	570S	5	<.1
1800 W 30S	35	<.1	1800 W 600S	10	<.1

ASSAYERS (ONTARIO) LIMITED

Per _____



ASSAYERS (ONTARIO) LIMITED

33 CHAUNCEY AVENUE TORONTO, ONTARIO M8Z 2Z2 · TELEPHONE (416) 239-3527

*Sheet 25
N/A. - error*

Certificate of Analysis

Certificate No. KR-05/ #2591

Date: November 14, 1983

Received _____

Samples of Soils

Submitted by Kenty Resources

Att'n: Mr. A. Hopkins

Mr. C. Hillmer

Sample No.	Au ppb	Ag ppm	Sample No.	Au ppb	Ag ppm
1800 W 630S	<5	<.1	1800 W 360N	14	<.1
660S	22	<.1	390N	N.S.	N.S.
690S	<5	<.1	420N	<5	<.1
720S	<5	<.1	450N	19	<.1
750S	25	<.1	480N	17	<.1
780S	11	<.1	510N	<5	<.1
810S	<5	<.1	540N	<5	<.1
840S	<5	<.1	570N	<5	<.1
870S	<5	<.1	600N	<5	<.1
907S	8	<.1	630N	26	<.1
30N	7	<.1	660N	<u>217</u>	<.1
60N	5	<.1	690N	<5	<.1
90N	27	<.1	715N	17	<.1
120N	15	<.1	1680 W 30S	13	<.1
150N	<5	<.1	60S	18	<.1
210N	9	<.1	90S	<5	<.1
240N	5	<.1	120S	<5	<.1
270N	9	<.1	150S	<5	<.1
300N	<5	<.1	180S	<5	<.1
1800 W330N	8	<.1	1680 W 210S	<5	<.1

Sheet 25

ASSAYERS (ONTARIO) LIMITED

Per _____



ASSAYERS (ONTARIO) LIMITED

33 CHAUNCEY AVENUE TORONTO, ONTARIO M8Z 2Z2 · TELEPHONE (416) 239-3527

Certificate of Analysis

Certificate No. KR-05/#2591

Date: November 14, 1983

Received _____

Samples of Soils

Submitted by Kenty Resources Limited

Att'n: Mr. A. Hopkins
Mr. C. Hillmer

Sample No.	Au ppb	Ag ppm	Sample No.	Au ppb	Ag ppm
1680 W 270S	<5	<.1	1680 W 905S	5	.1
303S	<5	<.1	BL	25	<.1
332S	19	<.1	30N	<5	<.1
360S	32	<.1	60N	<5	<.1
390S	19	<.1	90N	14	.2
420S	11	.1	120N	<5	<.1
450S	<5	.6	150N	<5	.2
480S	22	.4	180N	<5	.1
540S	<5	.3	210N	<5	.8
570S	<5	.2	240N	<5	.3
600S	16	.1	270N	<5	.6
630S	N.S.	N.S.	300N	7	.1
660S	<5	.5	330N	17	.2
690S	<5	.2	360N	25	.6
720S	<5	.4	390N	<5	.1
750S	36	.1	420N	5	.3
780S	19	.2	450N	10	<.1
810S	N.S.	N.S.	480N	6	<.1
840S	N.S.	N.S.	510N	<5	.2
1680 W 870S	N.S.	N.S.	1680 W 540N	<5	<.1

ASSAYERS (ONTARIO) LIMITED

Per _____



ASSAYERS (ONTARIO) LIMITED

33 CHAUNCEY AVENUE TORONTO, ONTARIO M8Z 2Z2 · TELEPHONE (416) 239-3527

Certificate of Analysis

Certificate No. KR-05/#2591

Date: November 14, 1983

Received _____

Samples of Soils

Submitted by Kenty Resources Limited

Att'n: Mr. A. Hopkins
c.c: Mr. C. Hillmer

Sample No.		Au ppb	Ag ppm	Sample No.	Au ppb	Ag ppm	
1560 W	BL	<5	<.1	1560 W	540S	<5	<.1
	30S	<5	<.1		570S	N.S.	N.S.
	60S	19	<.1		600S	<5	<.1
	90S	24	<.1		630S	26	<.1
	103S	<5	<.1		660S	6	<.1
	133S	6	<.1		690S	N.S.	N.S.
	163S	<5	<.1		720S	<5	<.1
	193S	<5	<.1		750S	N.S.	N.S.
	223S	N.S.	N.S.		780S	18	<.1
	250S	10	<.1		810S	N.S.	N.S.
	253S	N.S.	N.S.		840S	N.S.	N.S.
	280S	14	<.1		870S	<5	<.1
	300S	15	<.1		900S	5	<.1
	330S	18	<.1		30N	<5	<.1
	360S	23	<.1		60N	<5	<.1
	390S	8	<.1		90N	21	.2
	420S	16	<.1		120N	23	.4
	450S	9	.2		150N	5	.2
	480S	<5	.1		180N	<5	<.1
1560 W	510S	<5	<.1	1560 W	210N	16	.1

ASSAYERS (ONTARIO) LIMITED

Per _____



ASSAYERS (ONTARIO) LIMITED

33 CHAUNCEY AVENUE TORONTO, ONTARIO M8Z 2Z2 · TELEPHONE (416) 239-3527

Certificate of Analysis

Certificate No. KR-03 / #2511

Date: September 29, 1983

Received 746 Samples of Humus Swayze

Submitted by Mr. L. Reichel

Sample No.	Au ppb	Ag ppm	Sample No.	Au ppb	Ag ppm
L 1320 W 480N	22	<.1	L1320 W 795N	18	<.1
L 1320 W 495N	7	<.1	810N	18	<.1
L 1320 W 510N	<5	<.1	825N	13	<.1
L 1320 W 525N	5	<.1	840N	8	<.1
L 1320 W 540N	<5	<.1	855N	<5	<.1
L 1320 W 555N	<5	<.1	870N	12	<.1
L 1320 W 570N	7	.5	885N	<5	<.1
L 1320 W 585N	<5	<.1	900N	10	<.1
L 1320 W 600N	14	<.1	915N	7	<.1
L 1320 W 615N	6	<.1	930N	<5	<.1
L 1320 W 630N	6	<.1	945N	<5	<.1
L 1320 W 645N	N.S.S.		960N	25	<.1
L 1320 W 660N	5	<.1	975N	12	<.1
L 1320 W 675N	<5	<.1	L1320 W 985N	<5	<.1
L 1320 W 690N	N.S.S.		L1440 W 436N	12	<.1
L 1320 W 705N	<5	<.1	450N	8	<.1
L 1320 W 720N	<5	<.1	465N	12	<.1
L 1320 W 735N	<5	<.1	480N	6	<.1
L 1320 W 750N	<5	<.1	495N	5	<.1
L 1320 W 765N	<5	<.1	L1440 W 510N	<5	<.1
L 1320 W 780N	29	<.1			

ASSAYERS (ONTARIO) LIMITED

Per 



ASSAYERS (ONTARIO) LIMITED

33 CHAUNCEY AVENUE TORONTO, ONTARIO M8Z 2Z2 · TELEPHONE (416) 239-3527

Certificate of Analysis

Certificate No. KR-03 / #2511

Date: September 29, 1983

Received 746 Samples of Humus Swayze

Submitted by Mr. L. Reichel

Sample No.	Au ppb	Ag ppm	Sample No.	Au ppb	Ag ppm
L 840E 15N	<5	.4	L 720E 285S	<5	<.1
30N	5	.1	270S	<5	<.1
45N	16	<.1	255S	<5	<.1
60N	<5	<.1	240S	<5	<.1
75N	<5	.1	225S	10	<.1
90N	5	.1	210S	<5	<.1
105N	5	<.1	195S	<5	<.1
120N	<5	<.1	180S	<5	<.1
135N	10	.3	165S	<5	<.1
150N	<5	<.1	150S	<5	<.1
165N	<5	.4	135S	<5	<.1
180N	6	.3	105S	<5	<.1
195N	9	.1	90s	<5	<.1
L 840E 205N	<5	.3	75S	16	<.1
L 720E 371S	5	<.1	60S	<5	<.1
360S	11	<.1	45S	<5	<.1
345S	13	.2	30S	<5	<.1
330S	9	.4	15S	5	<.1
315S	<5	.2	L 720E 80N	<5	<.1
300S	6	.3	L 720E 15N	<5	<.1

ASSAYERS (ONTARIO) LIMITED

Per 



ASSAYERS (ONTARIO) LIMITED

33 CHAUNCEY AVENUE TORONTO, ONTARIO M8Z 2Z2 · TELEPHONE (416) 239-3527

Certificate of Analysis

Certificate No. KR-03 / #2511

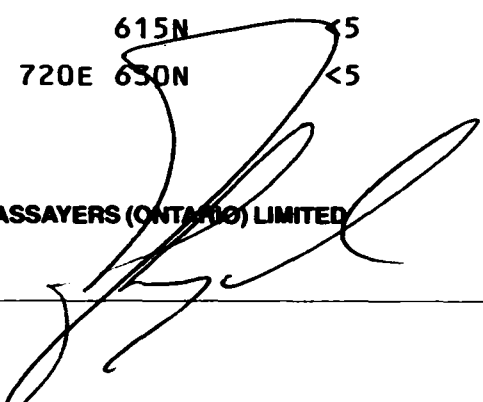
Date: September 29, 1983

Received 746 Samples of Humus Swayze

Submitted by Mr. L. Reichel

Sample No.	Au ppb	Ag ppm	Sample No.	Au ppb	Ag ppm
L 720E 30N	<5	<.1	L 720E 330N	<5	<.1
45N	<5	<.1	345N	<5	<.1
69N	<5	<.1	360N	<5	1.5
75N	<5	<.1	375N	<5	<.1
90N	<5	<.1	390N	5	<.1
105N	<5	<.1	405N	<5	<.1
120N	<5	<.1	420N	<5	<.1
135N	<5	<.1	435N	<5	<.1
150N	<5	<.1	450N	<5	<.1
165N	<5	<.1	465N	<5	<.1
180N	6	<.1	480N	<5	<.1
195N	5	<.1	495N	<5	<.1
210N	<5	<.1	525N	<5	<.1
225N	<5	<.1	540N	<5	<.1
240N	<5	<.1	555N	<5	<.1
255N	<5	<.1	570N	<5	<.1
270N	<5	<.1	585N	<5	<.1
285N	<5	<.1	600N	<5	<.1
300N	12	<.1	615N	<5	<.1
L 720E 315N	<5	<.1	L 720E 630N	<5	<.1

ASSAYERS (ONTARIO) LIMITED

Per 



ASSAYERS (ONTARIO) LIMITED

33 CHAUNCEY AVENUE TORONTO, ONTARIO M8Z 2Z2 · TELEPHONE (416) 239-3527

Certificate of Analysis

Certificate No. KR-03 / #2511

Date: October 6, 1983

Received 746 Samples of Humus Swayze

Submitted by Mr. L. Reichel

Sample No.	Au ppb	Ag ppm	Sample No.	Au ppb	Ag ppm
L 720E 653N	<5	<.1	L 600E 60S	<5	.1
L 600E 348S	17	<.1	45S	<5	<.1
330S	10	<.1	30S	28	<.1
315S	9	<.1	15S	28	.1
300S	15	<.1	00N	--	--
285S	5	<.1	15N	20	<.1
270S	<5	<.1	30N	9	<.1
255S	13	<.1	45N	10	.1
240S	<5	<.1	60N	<10	.1
225S	6	<.1	75N	<10	.1
210S	<5	<.1	90N	<10	.1
195S	16	<.1	105N	22	.2
180S	10	<.1	120N	15	.1
165S	<5	<.1	135N	8	.2
150S	5	<.1	150N	26	.2
135S	5	<.1	165N	21	.2
120S	<5	<.1	180N	27	.1
105S	11	<.1	195N	28	.1
90S	9	<.1	210N	27	.1
L 600E 75S	11	<.1	L 600E 225N	41	.1

ASSAYERS (ONTARIO) LIMITED

Per _____



ASSAYERS (ONTARIO) LIMITED

33 CHAUNCEY AVENUE TORONTO, ONTARIO M8Z 2Z2 - TELEPHONE (416) 239-3527

Certificate of Analysis

Certificate No. KR-03 / #2511

Date: October 6, 1983

Received 746 Samples of Humus Swayze

Submitted by Mr. L. Reichel

Sample No.	Au ppb	Ag ppm	Sample No.	Au ppb	Ag ppm
L 600E 240N	9	.3	L600E 540N	22	<.1
255N	<5	.2	555N	5	<.1
270N	8	.3	570N	7	<.1
285N	<5	<.1	585N	9	<.1
300N	<5	.2	600N	8	<.1
315N	<5	.2	615N	15	<.1
330N	50	<.1	630N	<5	<.1
345N	<5	<.1	645N		<.1
360N	<5	.2	660N	19	<.1
375N	<5	.1	675N	22	<.1
390N	<5	.1	690N	<5	<.1
405N	10	.2	705N	<5	<.1
420N	12	.1	720N	<5	<.1
435N	<5	.1	735N	<5	<.1
450N	<5	<.1	750N	16	<.1
465N	<5	<.1	765N	14	<.1
480N	<5	.1	780N	<5	<.1
495N	<5	<.1	795N	9	<.1
510N	5	.1	810N	<5	<.1
L 600E 525N	13	<.1	L600E 822N	16	<.1

ASSAYERS (ONTARIO) LIMITED

Per 



ASSAYERS (ONTARIO) LIMITED

33 CHAUNCEY AVENUE TORONTO, ONTARIO M8Z 2Z2 · TELEPHONE (416) 239-3527

Certificate of Analysis

Certificate No. KR-03/#2511 Date: October 14, 1983
Received 746 Samples of Humus Swayze
Submitted by Mr. L. Reichel

Sample No.	Au ppb	Ag ppm	Sample No.	Au ppb	Ag ppm
L600E 840N	5	<.1	L840E 285S	<5	<.1
L480E 351S	<5	<.1	270S	8	<.1
345S	14	<.1	255S	<5	<.1
330S	9	<.1	240S	5	<.1
315S	5	<.1	225S	<5	.1
300S	<5	<.1	210S	12	.2
285S	8	<.1	195S	7	.3
270S	8	<.1	180S	<5	<.1
255S	10	<.1	165S	9	<.1
240S	9	<.1	150S	<5	.2
225S	11	<.1	135S	<5	.1
210S	<5	<.1	120S	<5	.1
195S	<5	<.1	105S	16	.1
180S	6	<.1	90S	14	.2
165S	<5	<.1	75S	<5	.2
150S	<5	<.1	60S	7	.3
135S	13	<.1	45S	9	.2
120S	<5	<.1	30S	5	<.1
105S	<5	<.1	15S	<5	.6
L480E 75S	8	<.1	L840E 08N	6	<.1

ASSAYERS (ONTARIO) LIMITED

Per 



ASSAYERS (ONTARIO) LIMITED

33 CHAUNCEY AVENUE TORONTO, ONTARIO M8Z 2Z2 · TELEPHONE (416) 239-3527

Certificate of Analysis

Certificate No. KR-03/ #2511

Date: October 20, 1983

Received 746 Samples of Humus Swayze

Submitted by Mr. L. Reichel

Sample No.	Au ppb	Ag ppm	Sample No.	Au ppb	Ag ppm
L480E 60S	35	<.1	L480E 270N	<5	.3
45S	7	.7	285N	5	<.1
30S	34	<.1	300N	<5	<.1
15S	15	.2	315N	9	.2
00N	<5	.1	330N	16	.2
15N	<5	<.1	360N	5	.1
30N	11	.2	375N	<5	<.1
45N	14	.6	390N	<5	<.1
60N	<5	.3	405N	<5	<.1
75N	11	.2	420N	<5	.2
90N	<5	1.0	435N	<5	.3
105N	13	.2	450N	<5	.5
120N	<5	.5	465N	<5	.4
150N	7	.3	480N	<5	.1
165N	<5	<.1	495N	<5	.5
180N	13	<.1	510N	5	.2
195N	12	<.1	525N	<5	.4
210N	6	<.1	540N	<5	.4
240N	<5	<.1	555N	<5	.3
L480E 255N	21	<.1	L480E 570N	<5	.4

ASSAYERS (ONTARIO) LIMITED

Per 



ASSAYERS (ONTARIO) LIMITED

33 CHAUNCEY AVENUE TORONTO, ONTARIO M8Z 2Z2 · TELEPHONE (416) 239-3527

Certificate of Analysis

Certificate No. KR-03 / #2511

Date: October 20, 1983

Received _____ 746 Samples of Humus Swayze

Submitted by Mr. L. Reichel

Sample No.	Au ppb	Ag ppm	Sample No.	Au ppb	Ag ppm
L480E 585N	5	.1	L360E 450S	<5	.4
600N	6	<.1	435S	<5	.2
— 615N	<5	1.1	420S	<5	<.1
630N	16	.6	405S	<5	<.1
645N	11	<.1	390S	9	.4
660N	7	<.1	375S	5	.4
675N	9	.9	360S	<5	.1
690N	7	<.1	345S	<5	.3
705N	5	<.1	330S	7	<.1
720N	<5	<.1	315S	<5	<.1
735N	<5	.9	300S	7	.1
750N	<5	.2	285S	6	.3
765N	<5	.3	270S	<5	.1
780N	<5	.4	255S	<5	.2
795N	<5	.1	240S	<5	.1
810N	<5	.4	— 225S	33	<.1
825N	5	.7	200S	5	.3
840N	5	.5	195S	5	.1
855N	N.S.	N.S.	180S	7	<.1
L480E 864N	6	.6	L360E 165S	10	.1

ASSAYERS (ONTARIO) LIMITED

Per _____



ASSAYERS (ONTARIO) LIMITED

33 CHAUNCEY AVENUE TORONTO, ONTARIO M8Z 2Z2 · TELEPHONE (416) 239-3527

Certificate of Analysis

Certificate No. KR-03/ #2511

Date: October 20, 1983

Received _____ 746 Samples of Humus Swayze

Submitted by Mr. L. Reichel

Sample No.	Au ppb	Ag ppm	Sample No.	Au ppb	Ag ppm
L360E 150S	<5	.4	L360E 150N	5	<.1
135S	<5	.1	165N	<5	<.1
120S	<5	.2	180N	5	.2
105S	<5	<.1	195N	35	.4
90S	<5	.2	210N	16	.2
75S	8	.2	225N	<5	.3
60S	<5	.1	240N	<5	.2
45S	<5	<.1	255N	<5	<.1
30S	<5	.1	270N	5	.3
15S	6	<.1	285N	6	.1
00N	<5	<.1	300N	5	.6
15N	<5	<.1	315N	<5	.5
30N	8	.3	330N	<5	.4
45N	15	.2	345N	<5	.4
60N	<5	.3	360N	<5	.5
75N	8	<.1	375N	<5	.2
90N	10	<.1	390N	<5	.3
105N	<5	.2	405N	<5	.7
120N	<5	<.1	420N	<5	.4
L360E 135N	<5	<.1	L360E 435N	<5	.5

ASSAYERS (ONTARIO) LIMITED

Per _____



ASSAYERS (ONTARIO) LIMITED

33 CHAUNCEY AVENUE TORONTO, ONTARIO M8Z 2Z2 · TELEPHONE (416) 239-3527

Certificate of Analysis

Certificate No. KR-03/ #2511 Date: October 20, 1983
Received 746 Samples of Humus Swayze
Submitted by Mr. L. Reichel

Sample No.	Au ppb	Ag ppm	Sample No.	Au ppb	Ag ppm
L360E 450N	6	.2	L360 E 750N	<5	.2
465N	<5	.4	765N	<5	.4
480N	<5	.5	780N	<5	.3
495N	<5	.3	795N	<5	.2
510N	<5	.8	810N	<5	.3
525N	<5	.1	L360 E 827N	9	<.1
540N	<5	<.1	LO-0 660N	<5	.2
555N	5	.2	675N	6	.3
570N	<5	.1	690N	<5	.1
585N	<5	<.1	705N	<5	.9
600N	<5	<.1	720N	<5	.4
615N	8	.4	735N	<5	.3
630N	<5	.3	— 750N	28	<.1
645N	<5	<.1	765N	<5	.4
660N	6	.2	780N	9	.1
675N	13	.3	795N	N.S.	N.S.
690N	<5	.2	810N	<5	<.1
705N	8	.3	825N	5	.1
720N	6	.5	840N	<5	.2
L360E 735N	<5	.4	855N	12	.5
			870N	23	.2
			LO-0 885N	<5	.1

ASSAYERS (ONTARIO) LIMITED

Per 



ASSAYERS (ONTARIO) LIMITED

33 CHAUNCEY AVENUE TORONTO, ONTARIO M8Z 2Z2 · TELEPHONE (416) 239-3527

Certificate of Analysis

Certificate No. KR-03/ #2511

Date: October 20, 1983

Received _____ 746 Samples of Humus Swayze

Submitted by Mr. L. Reichel

Sample No.	Au ppb	Ag ppm	Sample No.	Au ppb	Ag ppm
L0-0 900N	<5	.3	L120W 885N	5	<.1
915N	<5	.2	900N	<5	<.1
930N	<5	<.1	915N	5	<.1
945N	8	.2	930N	5	<.1
960NA	<5	<.1	945N	<5	<.1
960NB	<5	<.1	960N	5	<.1
975N	<5	<.1	975N	5	<.1
990N	<5	<.1	990N	8	<.1
L0-0 1004N	6	<.1	L120W 1005N	7	<.1
L120W 660N	<5	<.1	L240W 623N	14	<.1
675N	<5	<.1	645N	<5	<.1
690N	<5	<.1	705N	6	<.1
705N	5	<.1	720N	<5	<.1
720N	7	<.1	735N	<5	<.1
735N	<5	<.1	750N	6	<.1
750N	<5	<.1	765N	<5	<.1
765N	<5	<.1	780N	<5	<.1
780N	7	<.1	795N	<5	<.1
795N	<5	<.1	810N	11	<.1
810N	5	<.1	L240W 825N	<5	<.1
825N	<5	<.1			
840N	5	<.1			
855N	<5	<.1			
L120W 870N	<5	<.1			

ASSAYERS (ONTARIO) LIMITED

Per _____



ASSAYERS (ONTARIO) LIMITED

33 CHAUNCEY AVENUE TORONTO, ONTARIO M8Z 2Z2 · TELEPHONE (416) 239-3527

Certificate of Analysis

Certificate No. KR-03 / #2511 Date: September 29, 1983
Received _____ Samples of Humus Swayze
Submitted by Mr. L. Reichel

Sample No.	Au ppb	Ag ppm	Sample No.	Au ppb	Ag ppb
L 1440W 525N	<5	<.1	L 1440W 825N	<5	.3
540N	<5	<.1	840N	8	<.1
555N	5	<.1	855N	5	<.1
570N	<5	<.1	870N	16	<.1
585N	<5	<.1	885N	5	<.1
600N	9	<.1	900N	<5	<.1
615N	19	<.1	915N	<5	<.1
630N	7	<.1	930N	<5	<.1
645N	N.S.S.		945N	8	<.1
660N	121	<.1	960N	<5	<.1
675N	<5	<.1	981N	<5	<.1
690N	10	<.1	L 840E 427S	20	<.1
705N	<5	<.1	405S	6	<.1
720N	<5	<.1	390S	25	<.1
735N	12	<.1	375S	5	<.1
750N	10	<.1	360S	20	<.1
765N	9	<.1	345S	14	<.1
780N	<5	<.1	330S	6	<.1
795N	N.S.S.		315S	11	<.1
L 1440W 810N	<5	<.1	L 840E 300S	<5	<.2

ASSAYERS (ONTARIO) LIMITED

Per _____



ASSAYERS (ONTARIO) LIMITED

33 CHAUNCEY AVENUE TORONTO, ONTARIO M8Z 2Z2 - TELEPHONE (416) 239-3527

113
150
20
25
30

Certificate of Analysis

Certificate No. KR-01/ #2396 for 193

Date: August 31, 1983

Received 522

Samples of Humus

Submitted by Kenty Resources Ltd.

Att'n: Mr. C. Hillmer

Sample No.	Au ppb	Ag ppm	Sample No.	Au ppb	Ag ppm
2160E·210N	No Sample	Lake	2160E·510N	34	<.1
· 225N	No Sample	Lake	· 525N	32	.9
· 240N	No Sample	Lake	· 540N	16	.2
· 255N	12	<.1	· 555N	<5	.2
· 270N	25	<.1	· 570N	<5	<.1
· 285N	11	<.1	· 585N	<5	<.1
· 300N	10	<.1	· 600N	6	<.1
· 315N	6	<.1	· 615N	<5	<.1
· 330N	6	<.1	· 630N	<5	<.1
· 345N	<5	<.1	· 645N	<5	<.1
· 360N	12	<.1	· 660N	5	<.1
· 375N	<5	<.1	· 675N	17	<.1
· 390N	11	<.1	· 690N	18	<.1
· 405N	14	<.1	· 705N	12	<.1
· 420N	12	<.1	· 720N	9	<.1
· 435N	12	<.1	· 735N	26	<.1
· 450N	17	<.1	· 740N	10	<.1
· 465N	14	.3	· 765N	24	<.1
· 480N	37	.9	· 780N	8	<.1
2160E·495N	25	<.1	2160E·795N	5	<.1

ASSAYERS (ONTARIO) LIMITED

Per 



ASSAYERS (ONTARIO) LIMITED

33 CHAUNCEY AVENUE TORONTO, ONTARIO M8Z 2Z2 · TELEPHONE (416) 239-3527

Certificate of Analysis

Certificate No. KR-01/ #2396

Date: August 31, 1983

Received 522

Samples of Humus

Submitted by Kenty Resources Ltd.

Att'n: Mr. C. Hillmer

Sample No.	Au ppb	Ag ppm	Sample No.	Au ppb	Ag ppm
2040E-510N	<5	<.1	2040E-810N	17	<.1
. 525N	27	<.1	. 825N	17	<.1
. 540N	14	<.1	. 840N	<5	<.1
. 555N	28	<.1	. 855N	<5	<.1
. 570N	6	<.1	. 870N	11	<.1
. 585N	12	<.1	. 885N	<5	<.1
. 600N	20	<.1	2040E-900N	10	<.1
. 615N	8	<.1	2160E . 15N	9	<.1
. 630N	<5	<.1	. 30N	10	<.1
. 645N	NO SAMPLE		. 45N	10	<.1
. 660N	20	<.1	. 60N	5	<.1
. 675N	25	<.1	. 75N	<5	.3
. 690N	NO SAMPLE		. 90N	5	<.1
. 705N	NO SAMPLE		. 105N	10	<.1
. 720N	9	<.1	. 120N	20	<.1
. 735N	15	<.1	. 135N	12	<.1
. 750N	<5	<.1	. 150N	<5	<.1
. 765N	28	<.1	. 165N	14	<.1
. 780N	<5	<.1	. 180N	17	<.1
2040E-795N	<5	<.1	2160E-195N	NO SAMPLE	- Lake

ASSAYERS (ONTARIO) LIMITED

Per _____



ASSAYERS (ONTARIO) LIMITED

33 CHAUNCEY AVENUE TORONTO, ONTARIO M8Z 2Z2 · TELEPHONE (416) 239-3527

Certificate of Analysis

Certificate No. KR-01/ #2396

Date: August 31, 1983

Received 522

Samples of Humus

Submitted by Kenty Resources Ltd.

ATT'N: Mr. C. Hillmer

Sample No.	Au ppb	Ag ppm	Sample No.	Au ppb	Ag ppm
2160E·800N	9	<.1	2280E·210N	N.S. Lake	
.825N	21	<.1	.225N	N.S. Lake	
.840N	12	<.1	.240N	N.S. Lake	
.855N	10	<.1	.255N	N.S. Lake	
.870N	9	<.1	.270N	N.S. Lake	
.885N	10	<.1	.285N	N.S. Lake	
2160E·900N	14	<.1	.300N	5	<.1
2280E·15N	5	<.1	.315N	7	<.1
.30N	6	<.1	.330N	<5	<.1
.45N	<5	<.1	.345N	10	<.1
.60N	<5	<.1	.360N	13	<.1
.75N	5	<.1	.375N	8	<.1
.90N	8	<.1	.390N	7	.3
.105N	<5	<.1	.405N	<5	<.1
.120N	<5	.3	.420N	8	<.1
.135N	<5	.3	.435N	18	<.1
.150N	<5	.3	.450N	23	.7
.165N	<5	<.1	.465N	6	.2
.180N	<5	<.1	.480N	7	<.1
2280E·195N	N.S. Lake		2280E·495N	5	<.1

ASSAYERS (ONTARIO) LIMITED

Per _____



ASSAYERS (ONTARIO) LIMITED

33 CHAUNCEY AVENUE TORONTO, ON. M8Z 2Z2 · TELEPHONE (416) 239-3527

Certificate of Analysis

Certificate No. KR-01/ #2396

Date: August 31, 1983

Received 522

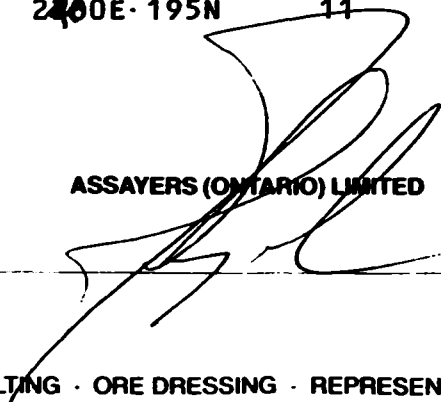
Samples of Humus

Submitted by Kenty Resources Ltd.

Att'n: Mr. C. Hillmer

Sample No.	Au ppb	Ag ppm	Sample No.	Au ppb	Ag ppm
2280E-510N	N.S.S.		2280 E-810N	14	<.1
. 525N	7	<.1	. 825N	14	<.1
. 540N	6	.5	. 840N	17	<.1
. 555N	7	<.1	. 855N	5	<.1
. 570N	10	<.1	. 870N	8	<.1
. 585N	28	<.1	. 885N	6	<.1
. 600N	12	<.1	2280E-900N	20	<.1
. 615N	N.S. Swamp		2400E-15N	<5	<.1
. 630N	N.S. Swamp		. 30N	<5	<.1
. 645N	7	.1	. 45N	6	<.1
. 660N	17	<.1	. 60N	11	<.1
. 675N	12	<.1	. 75N	<5	<.1
. 690N	N.S.		. 90N	16	<.1
. 705N	N.S.		. 105N	8	<.1
. 720N	N.S.		. 120N	9	<.1
. 735N	N.S.		. 135N	9	<.1
. 750N	11	<.1	. 150N	7	<.1
. 765N	7	<.1	. 165N	9	<.1
. 780N	N.S.		. 180N	5	<.1
2280E-795N	7	<.1	2400E-195N	11	<.1

ASSAYERS (ONTARIO) LIMITED

Per 



ASSAYERS (ONTARIO) LIMITED

33 CHAUNCEY AVENUE TORONTO, ONTARIO M8Z 2Z2 · TELEPHONE (416) 239-3527

Certificate of Analysis

Certificate No. KR-01/ #2396

Date: August 31, 1983

Received 522 Samples of Humus

Submitted by Kenty Resources Ltd. Att'n: Mr. C. Hillmer

Sample No.	Au ppb	Ag ppm	Sample No.	Au ppb	Ag ppm
2400E·210N	8	<.1	2400E·510N	18	17.2
. 225N	17	<.1	. 525N	5	19.7
. 240N	18	<.1	. 540N	8	<.1
. 255N	7	<.1	. 555N	<5	<.1
. 270N	<5	<.1	. 570N	21	<.1
. 285N	<5	<.1	. 585N	N.S.	
. 300N	11	<.1	. 600N	N.S.	
. 315N	14	<.1	. 615N	N.S.	
. 330N	28	<.1	. 630N	N.S.	
. 345N	<5	<.1	. 645N	N.S.	
. 360N	6	<.1	. 660N	20	<.1
. 375N	7	<.1	. 675N	6	<.1
. 390N	6	<.1	2400E·690N	5	<.1
. 405N	16	<.1			
. 420N	6	<.1			
. 435N	<5	<.1			
. 450N	<5	<.1			
. 465N	N.S.				
. 480N	21	<.1			
2400E·495N	12	<.1			

ASSAYERS (ONTARIO) LIMITED

Per 



ASSAYERS (ONTARIO) LIMITED

33 CHAUNCEY AVENUE TORONTO, ONTARIO M8Z 2Z2 · TELEPHONE (416) 239-3527

Certificate of Analysis

Certificate No. KR-01/ #2396 / 200 Date: August 26, 1983
 Received 522 Samples of Humus
 Submitted by Kenty Resources Ltd. Att'n: Mr. C. Hillmer

Sample No.	Au ppb	Ag ppm	Sample No.	Au ppb	Ag ppm
+ 1800E. 615N	133	.4	1920E. 480N	6	<.1
. 630N	23	.3	. 495N	NO SAMPLE	
. 645N	46	.4	. 510N	14	<.1
. 660N	16	.2	. 525N	<5	<.1
. 675N	30	<.1	. 540N	16	<.1
. 690N	33	<.1	. 555N	<5	<.1
. 705N	<5	<.1	. 570N	27	<.1
. 720N	<5	<.1	. 585N	21	<.1
. 735N	21	.2	. 600N	5	<.1
. 750N	<5	<.1	. 615N	16	<.1
. 765N	<5	<.1	. 630N	NO SAMPLE	
. 780N	<5	<.1	. 645N	24	<.1
+ .795N	87	<.1	. 660N	39	<.1
. 810N	30	<.1	. 675N	22	<.1
. 825N	6	<.1	. 690N	45	<.1
. 840N	23	<.1	. 705N	19	<.1
. 855N	41	<.1	. 720N	21	<.1
. 870N	48	<.1	. 735N	22	<.1
. 885N	<5	<.1	. 750N	23	<.1
1800E. 900N	20	<.1	1920E. 765N	20	<.1

ASSAYERS (ONTARIO) LIMITED

Per _____



ASSAYERS (ONTARIO) LIMITED

33 CHAUNCEY AVENUE TORONTO, ONTARIO M8Z 2Z2 · TELEPHONE (416) 239-3527

Certificate of Analysis

Certificate No. KR-01/ #2396

Date: August 26, 1983

Received 522 Samples of Humus

Submitted by Kenty Resources Ltd. Att'n: Mr. C. Hillmer

Sample No.	Au ppb	Ag ppm	Sample No.	Au ppb	Ag ppm
1920E-780N	16	<.1	2040E-180N	38	.1
·795N	13	<.1	·225N	15	.2
·810N	11	<.1	·240N	26	.1
·825N	<5	<.1	·255N	5	<.1
·840N	18	<.1	·270N	23	<.1
·855N	<5	<.1	·285N	33	<.1
X·870N	102	<.1	·300N	18	<.1
·885N	32	<.1	·315N	28	<.1
1920E-900N	23	<.1	·330N	8	<.1
2040E-15N	19	<.1	·345N	<5	<.1
·30N	<5	<.1	·360N	5	<.1
·45N	<5	<.1	·375N	25	<.1
·60N	6	<.1	·390N	29	<.1
·75N	34	<.1	·405N	16	<.1
·90N	39	<.1	·420N	16	<.1
·105N	24	<.1	X·435N	54	<.1
·120N	<5	<.1	·450N	<5	<.1
·135N	15	<.1	·465N	15	<.1
·150N	5	<.1	·480N	8	<.1
2040E-165N	7	<.1	2040E-495N	12	<.1

ASSAYERS (ONTARIO) LIMITED

Per _____



ASSAYERS (ONTARIO) LIMITED

33 CHAUNCEY AVENUE TORONTO, ONTARIO M8Z 2Z2 · TELEPHONE (416) 239-3527

*Chie d...
30132
#4
Sheet 31*

Certificate of Analysis

Certificate No. KR-01/ #2396

Date: August 26, 1983

Received 522

Samples of Humus

Submitted by Kenty Resources Ltd.

Att'n: Mr. C. Hillmer

Sample No.	Au ppb	Ag ppm	Sample No.	Au ppb	Ag ppm
1680E-465N	68	.3	1680E-765N	67	.2
.480N	29	<.1	.780N	<5	.3
.495N	<5	<.1	.795N	60	.4
.510N	<5	<.1	.810N	61	<.1
.525N	<5	<.1	*.825N	110	<.1
*.540N	133	<.1	.840N	<5	<.1
.555N	<5	<.1	.855N	26	<.1
.570N	<5	<.1	*.870N	120	<.1
.585N	<5	<.1	.885N	<5	<.1
*.600N	239	<.1	1680E-900N	81	<.1
.615N	56	<.1	1800E-465N	20	.2
.630N	<5	<.1	.480N	5	<.1
.645N	27	<.1	.495N	78	.6
.660N	<5	<.1	*.510N	100	.1
.675N	<5	<.1	.525N	30	<.1
.690N	<5	<.1	.540N	43	<.1
.705N	<5	<.1	.555N	<5	<.1
.720N	<5	<.1	.570N	63	<.1
*.735N	120	<.1	*.585N	90	<.1
1680E 750N	<5	<.1	1800E-600N	176	<.1

ASSAYERS (ONTARIO) LIMITED

Per _____



ASSAYERS (ONTARIO) LIMITED

33 CHAUNCEY AVENUE TORONTO, ONTARIO M8Z 2Z2 · TELEPHONE (416) 239-3527

Certificate of Analysis

Certificate No. KR-01/ #2396

Date: August 26, 1983

Received 522

Samples of Humus

Submitted by Kenty Resources Ltd.

Att'n: Mr. C. Hillmer

Sample No.	Au ppb	Ag ppm	Sample No.	Au ppb	Ag ppm
1440E/840N	284	.1	1560E.645N	<5	1.9
.855N	58	.1	†.660N	250	1.1
.870N	83	.1	†.675N	126	.5
.885N	16	.1	.690N	6	.3
1440E.900N	13	.1	.705N	<5	.1
1560E/420N	128	.1	†.720N	284	<.1
.435N	12	.1	.735N	<5	<.1
.450N	9	.1	.750N	53	.5
.465N	16	.1	†.765N	500	.6
.480N	11	.1	†.780N	200	.5
.495N	<5	.1	.795N	<5	.4
.510N	<5	.1	†.810N	130	.3
.525N	9	.2	.825N	83	.2
.540N	13	.1	.840N	34	<.1
.555N	<5	.1	.855N	32	.1
.570N	21	.1	†.870N	170	.3
†.585N	91	.1	†.885N	305	<.1
.600N	10	.1	1560E.900N	99	.1
.615N	7	.1	1680E.435N	NO SAMPLE	
1560E.630N	29	.1	1680E.450N	<5	.2

ASSAYERS (ONTARIO) LIMITED

Per _____



ASSAYERS (ONTARIO) LIMITED

33 CHAUNCEY AVENUE TORONTO, ONTARIO M8Z 2Z2 · TELEPHONE (416) 239-3527

RECEIVED AUG 31 1983

Certificate of Analysis

Certificate No. KR-01/ #2396

Date: August 26, 1983

Received 522

Samples of Humus

Submitted by Kenty Resources Ltd.

Att'n: Mr. C. Hillmer

Sample No.	Au ppb	Ag ppm	Sample No.	Au ppb	Ag ppm
1320E·750N	14	.2	1440E·540N	19	.1
.765N	31	.1	.555N	26	.1
.780N	<5	.1	.570N	<5	.1
.795N	9	.1	.585N	15	.1
.810N	6	<.1	.600N	7	.1
.825N	7	.1	.615N	32	.1
.840N	9	.1	.630N	14	.1
*.855N	53	<.1	.645N	<5	22.5
.870N	18	.1	.660N	10	.4
.885N	24	.1	.675N	14	.2
1320E·900N	53	.1	.690N	<5	.1
1440E·405N	53	.1	.705N	29	.1
.420N	14	<.1	.720N	7	.1
.435N	<5	.1	.735N	18	.1
.450N	<5	.1	.750N	58	.1
.465N	<5	.1	.765N	13	1.3
.480N	<5	<.1	.780N	11	.1
.495N	48	.1	.795N	21	.1
.510N	<5	.1	.810N	28	.1
1440E·525N	28	.1	1440E·825N	5	.1

ASSAYERS (ONTARIO) LIMITED

Per _____



ASSAYERS (ONTARIO) LIMITED

33 CHAUNCEY AVENUE TORONTO, ONTARIO M8Z 2Z2 · TELEPHONE (416) 239-3527

160

Certificate of Analysis

Certificate No. KR-01/ #2374

Date: August 19, 1983

Received 160 Samples of Humus

Submitted by Kenty Resources Limited

Sample No.	Au ppb	Ag ppm	Sample No.	^{bg.=5} Au ppb	^{bg.=0.1} Ag ppm
59 TWP L .15N	19	.8	TWP L .315N	20	<.1
.30N	<5	<.1	.330N	12	<.1
.45N	1300	<.1	.345N	<5	<.1
.60N	<5	<.1	.360N	20	<.1
.75N	<5	<.1	.375N	26	<.1
.90N	<5	<.1	.390N	24	<.1
.105N	10	<.1	.405N	14	<.1
.120N	47	<.1	.420N	<5	<.1
.135N	<5	<.1	.435N	10	<.1
.150N	173	2.2	.450N	14	<.1
.165N	<5	<.1	.465N	<5	<.1
.180N	<5	<.1	.480N	<5	<.1
.195N	<5	<.1	.495N	<5	<.1
.210N	<5	<.1	.510N	<5	<.1
.225N	<5	<.1	.525N	<5	<.1
.240N	<5	<.1	.540N	6	<.1
.255N	<5	<.1	.555N	5	<.1
.270N	15	<.1	.570N	22	<.1
TWP L .285N	<5	<.1	.585N	No Sample	
TWP L .300N	<5	<.1	TWP L .600N		<.1

ASSAYERS (ONTARIO) LIMITED

Per _____



ASSAYERS (ONTARIO) LIMITED

33 CHAUNCEY AVENUE TORONTO, ONTARIO M8Z 2Z2 · TELEPHONE (416) 239-3527

Certificate of Analysis

Certificate No. KR-01/ # 2374

Date: August 19, 1983

Received _____ 160 Samples of Humus

Submitted by Kenty Resources Limited

Sample No.	Au ppb	Ag ppm	Sample No.	Au ppb	Ag ppm
TWP L · 615N	No Sample		TWP L · 45S	16	<.1
· 630N	8	<.1	· 435S	<5	<.1
· 645N	12	.6	· 405S	<5	<.1
· 660N	25	<.1	<u>59</u> · 360N	5	<.1
· 675N	32	<.1	<u>37 1080</u> E · 375N	5	<.1
· 690N	No Sample		(17+20) · 390N	<5	<.1
· 810N	24	<.1	· 405N	<5	<.1
· 825N	No Sample		· 420N	<5	<.1
· 840N	18	<.1	· 435N	<5	<.1
· 855N	30	1.0	· 450N	<5	<.1
· 870N	5	<.1	· 465N	18	<.1
· 885N	54	<.1	· 480N	<5	<.1
· 900N	16	<.1	· 495N	20	<.1
· 915N	<5	<.1	· 510N	18	<.1
· 930N	5	<.1	· 525N	23	<.1
· 945N	30	263	· 540N	<5	<.1
· 960N	53	<.1	· 555N	6	<.1
· 975N	36	<.1	· 570N	12	<.1
· 990N	16	<.1	· 585N	6	<.1
TWP L · 15S	<5	<.1	1080 E · 600N	<5	<.1

ASSAYERS (ONTARIO) LIMITED

Per _____



ASSAYERS (ONTARIO) LIMITED

33 CHAUNCEY AVENUE TORONTO, ONTARIO M8Z 2Z2 · TELEPHONE (416) 239-3527

Certificate of Analysis

Certificate No. KR-01/ # 2374

Date: August 19, 1983

Received 160 Samples of Humus

Submitted by Kenty Resources Limited

Sample No.	Au ppb	Ag ppm	Sample No.	Au ppb	Ag ppm
36-1200 E .675N	7	.2	1320 E .450N	11	.2
(20+16) .690N	<5	<.1	.465N	20	.6
.705N	31	<.1	.480N	<5	.7
.720N	<5	<.1	.495N	<5	.6
.735N	<5	<.1	.510N	<5	.3
.750N	5	<.1	.525N	<5	<.1
.765N	7	<.1	.540N	8	<.1
.780N	<5	4.2	.555N	51	<.1
.795N	14	.1	.570N	<5	<.1
.810N	13	<.1	.585N	<5	<.1
.825N	<5	<.1	.600N	<5	<.1
.840N	<5	<.1	.615N	7	<.1
.855N	21	<.1	.630N	19	<.1
.870N	<5	<.1	.645N	32	<.1
.885N	19	<.1	.660N	<5	<.1
1200 E .900N	18	<.1	.675N	11	<.1
1320 E .390N	<5	.7	.690N	<5	<.1
.405N	<5	<.1	.705N	19	<.1
.420N	<5	<.1	.720N	<5	<.1
24-1320 E .435N	15	<.1	24-1320 E .735N	<5	<.1

ASSAYERS (ONTARIO) LIMITED

Per _____



ASSAYERS (ONTARIO) LIMITED

33 CHAUNCEY AVENUE TORONTO, ONTARIO M8Z 2Z2 - TELEPHONE (416) 239-3527

Certificate of Analysis

Certificate No. KR-01/ # 2374

Date: August 19, 1983

Received 160 Samples of Humus

Submitted by Kenty Resources Limited

Sample No.	Au ppb	Ag ppm	Sample No.	Au ppb	Ag ppm
37-1080 E - 615N (17+20)	7	<.1	36-1200 E .375N (16+20)	<5	<.1
- 630N	40	<.1	.390N	23	<.1
- 645N	16	<.1	.405N	16	<.1
- 660N	17	<.1	.420N	31	<.1
- 675N	5	<.1	.435N	16	.6
- 690N	18	<.1	.450N	30	.4
- 705N	6	.4	.465N	7	<.1
- 720N	14	.2	.480N	28	.2
- 735N	15	<.1	.495N	26	<.1
- 750N	21	<.1	.510N	18	.2
- 765N	<5	<.1	.525N	26	.5
- 780N	<5	<.1	.540N	20	.1
- 795N	19	<.1	.555N	51	<.1
- 810N	37	<.1	.570N	<5	<.1
- 825N	36	1.0	.585N	<5	.1
- 840N	28	<.1	.600N	<5	<.1
- 855N	62	.1	.615N	36	<.1
- 870N	28	<.1	.630N	<5	<.1
- 885N	47	<.1	.645N	<5	.2
1080 E - 900N	131	<.1	1200 E - 600N	8	6.2

ASSAYERS (ONTARIO) LIMITED

Per _____



ASSAYERS (ONTARIO) LIMITED

33 CHAUNCEY AVENUE TORONTO, ONTARIO M8Z 2Z2 · TELEPHONE (416) 239-3527

Certificate of Analysis

Certificate No. KR-05/14,15/2626

Date: November 18, 1983

Received _____ 320 Samples of Soils

Submitted by Kenty Resources Limited Att'n: Mr. A. Hopkins
Mr. C. Hillmer ✓

Sample No.	Au ppb	Ag ppm	Sample No.	Au ppb	Ag ppm
1560 W 240N	<5	.4	1320 W 180S	<5	<.1
270N	<5	<.1	210S	<5	<.1
300N	<5	<.1	240S	<5	<.1
330N	<5	<.1	270S	<5	<.1
360N	<5	<.1	300S	<5	<.1
390N	<5	<.1	335S	<5	<.1
420N	<5	.2	355S	<5	<.1
450N	<5	<.1	370S	<5	<.1
480N	<5	<.1	400S	<5	<.1
510N	<5	<.1	420S	<5	<.1
540N	<5	<.1	450S	<5	<.1
570N	<5	<.1	480S	<5	.2
600N	<5	<.1	510S	<5	<.1
1560 W 637N	<5	<.1	540S	<5	<.1
1320 W BL	<5	<.1	570S	<5	.2
30S	15	<.1	600S	<5	<.1
60S	<5	<.1	630S	<5	<.1
90S	<5	<.1	660S	<5	<.1
120S	<5	<.1	690S	<5	<.1
1320 W 150S	<5	<.1	1320 W 720S	<5	<.1

ASSAYERS (ONTARIO) LIMITED

Per _____



ASSAYERS (ONTARIO) LIMITED

33 CHAUNCEY AVENUE TORONTO, ONTARIO M8Z 2Z2 · TELEPHONE (416) 239-3527

Certificate of Analysis

Certificate No. KR-05/16,17/#2626

Date: November 13, 1983

Received _____

Samples of Soils

Submitted by Kenty Resources Limited

Att'n: Mr. A. Hopkins
Mr. C. Hillner

Sample No.	Au ppb	Ag ppm	Sample No.	Au ppb	Ag ppm
1320 W 750S	<5	.5	1320 W 390N	6	<.1
780S	<5	.4	420N	<5	<.1
810S	5	.2	450N	<5	<.1
840S	24	.1	480N	<5	.3
870S	20	<.1	510N	<5	<.1
900S	22	<.1	540N	<5	<.1
905S	13	.2	570N	6	<.1
30N	26	.1	600N	<5	<.1
60N	37	.1	1320 W 625N	14	<.1
90N-A	23	<.1	1200 W BL	6	<.1
90N-B	<5	<.1	30S	<5	<.1
120N	13	<.1	60S	<5	<.1
150N	<5	.2	90S	<5	<.1
180N	<5	<.1	122S	<5	<.1
210N	7	<.1	30N	<5	<.1
240N	<5	<.1	60N	<5	<.1
270N	<5	<.1	90N	<5	<.1
300N	7	<.1	120N	<5	<.1
330N	<5	<.1	150N	9	<.1
1320 W 360N	<5	<.1	1200 W 180N	<5	<.1

ASSAYERS (ONTARIO) LIMITED

Per _____



ASSAYERS (ONTARIO) LIMITED

33 CHAUNCEY AVENUE TORONTO, ONTARIO M8Z 2Z2 · TELEPHONE (416) 239-3527

Certificate of Analysis

Certificate No. KR-05-18/ #2626

Date: November 22, 1983

Received _____

Samples of Soils

Submitted by Kenty Resources Limited

Att'n: Mr. A. Hopkins
C.C. Mr. C. Hillmer

Sample No.	Au ppb	Ag ppm	Sample No.	Au ppb	Ag ppm
1200W 210N	<5	.1	1080W 90N	17	<.1
240N	<5	<.1	120N	<5	.1
270N	<5	<.1	150N	<5	<.1
300N	6	.2	180N	5	.1
330N	5	<.1	210N	11	<.1
360N	13	<.1	240N	<5	<.1
390N	14	.3	270N	<5	<.1
420N	6	.3	300N	6	<.1
450N	5	.3	330N	16	.2
480N	14	.2	360N	N.S.	
510N	<5	.2	390N	8	.5
540N	38	.5	420N	16	<.1
570N	5	<.1	450N	<5	<.1
1200W 600N	<5	<.1	480N	10	<.1
1080W 30s	<5	<.1	510N	10	.2
60s	<5	<.1	540N	<5	.2
90s	6	<.1	570N	<5	.4
110s	<5	<.1	600N	8	.4
30N	11	<.1	630N	<5	<.1
1080W 60N	13	<.1	1080W 660N	8	.6

ASSAYERS (ONTARIO) LIMITED

Per _____



ASSAYERS (ONTARIO) LIMITED

33 CHAUNCEY AVENUE TORONTO, ONTARIO M8Z 2Z2 · TELEPHONE (416) 239-3527

Certificate of Analysis

Certificate No. KR-05-20/ # 2626

Date: November 22, 1983

Received _____

Samples of Soils

Submitted by Kenty Resources Limited

Attention: Mr. A. Hopkins
c.c. Mr. C. Hillmer

Sample No.	Au ppb	Ag ppm	Sample No.	Au ppb	Ag ppm
1080W 685N	<5	.1	960W 450N	<5	.2
960W BL	9	<.1	480N	<5	.6
30S	<5	<.1	510N	8	.3
60S	<5	<.1	540N	13	.6
90S	14	<.1	570N	<5	.1
96S	<5	<.1	600N	<5	.1
30N	<5	<.1	630N	<5	<.1
60N	<5	<.1	660N	15	<.1
90N	<5	<.1	690N	<5	.2
120N	<5	<.1	720N	18	.3
150N	<5	<.1	960W 743N	10	.1
180N	16	<.1	840W BL	<5	.2
210N	8	<.1	30S	<5	.2
240N	10	<.1	60S	<5	<.1
270N	<5	<.1	80S	<5	.4
300N	16	<.1	30N	24	.3
330N	<5	<.1	60N	<5	.4
360N	5	<.1	90N	<5	.3
390N	6	<.1	120N	<5	.4
960W 420N	<5	<.1	840W 150N	<5	<.1

ASSAYERS (ONTARIO) LIMITED

Per _____



ASSAYERS (ONTARIO) LIMITED

33 CHAUNCEY AVENUE TORONTO, ONTARIO M8Z 2Z2 · TELEPHONE (416) 239-3527

Certificate of Analysis

Certificate No. KR-05-22/ #2626

Date: November 22, 1983

Received _____

Samples of Soils

Submitted by Kenty Resources Limited

Att'n: Mr. A. Hopkins
c.c. Mr. C. Hillmer

Sample No.	Au ppb	Ag ppm	Sample No.	Au ppb	Ag ppm
840W 180N	6	.4	840W 760N	35	<.1
210N	<5	<.1	780N	15	<.1
240N	<5	.1	840W 810N	18	<.1
270N	<5	.3	720W BL	<5	<.1
300N	<5	.5	30S	14	<.1
330N	5	<.1	60S	18	<.1
360N	<5	.3	73S	<5	<.1
390N	<5	.2	30N	5	<.1
420N	5	<.1	60N	11	<.1
450N	6	<.1	90N	42	<.1
480N	12	<.1	120N	43	<.1
510N	53	<.1	150N	16	<.1
540N	<5	.2	180N	21	<.1
570N	<5	<.1	210N	7	<.1
600N	5	<.1	240N	<5	<.1
630N	9	<.1	270N	7	<.1
660N	26	<.1	300N	<5	<.1
690N	10	<.1	330N	<5	<.1
720N	13	<.1	360N	<5	<.1
840W 750N	11	.2	720W 390N	<5	<.1

ASSAYERS (ONTARIO) LIMITED

Per _____



ASSAYERS (ONTARIO) LIMITED

33 CHAUNCEY AVENUE TORONTO, ONTARIO M8Z 2Z2 · TELEPHONE (416) 239-3527

Certificate of Analysis

Certificate No. KR-05-241 #2626

Date: November 22, 1933

Received _____

Samples of Soils

Submitted by Kenty Resources Limited

Att'n: Mr. A. Hopkins

c.c. Mr. C. Hillmer

Sample No.	Au ppb	Ag ppm	Sample No.	Au ppb	Ag ppm
720W 420N	<5	<.1	600 W 150N	<5	<.1
450N	<5	<.1	180N	8	<.1
480N	<5	<.1	210N	5	<.1
510N	<5	<.1	240N	6	<.1
540N	<5	<.1	270N	N.S.	
570N	<5	<.1	300N	<5	<.1
600N	<5	<.1	330N	22	<.1
630N	<5	<.1	360N	<5	<.1
660N	<5	<.1	390N	7	<.1
690N	<5	<.1	420N	<5	<.1
720N	<5	<.1	450N	12	<.1
750N	<5	<.1	480N	10	<.1
720W 770N	<5	<.1	510N	10	<.1
600W BL	<5	<.1	540N	N.S.	
30S	10	<.1	570N	N.S.	
63S	<5	<.1	600N	11	<.1
30N	<5	<.1	630N	<7	<.1
60N	<5	<.1	660N	24	<.1
90N	8	<.1	690N	26	<.1
600W 120N	<5	<.1	600W 720N	N.S.	

ASSAYERS (ONTARIO) LIMITED

Per _____



ASSAYERS (ONTARIO) LIMITED

33 CHAUNCEY AVENUE TORONTO, ONTARIO M8Z 2Z2 · TELEPHONE (416) 239-3527

Certificate of Analysis

Certificate No. KR-05-261#2626

Date: November 22, 1933

Received _____ Samples of Soils

Submitted by Kenty Resources Limited Att'n: Mr. A. Hopkins
c.c. Mr. C. Hillmer

Sample No.	Au ppb	Ag ppm	Sample No.	Au ppb	Ag ppm
600W 750N	<5	<.1	480W 450N	7	.2
780N	16	<.1	480N	<5	<.1
600W 810N	<5	<.1	510N	<5	<.1
480W BL	<5	<.1	540N	<5	.2
30S	<5	<.1	570N	<5	.4
45S	<5	<.1	600N	<5	.2
30N	<5	<.1	630N	<5	<.1
60N	10	<.1	660N	<5	<.1
90N	<5	<.1	480W 690N	<5	.3
120N	<5	<.1	360W BL	<5	.2
150N	<5	<.1	30S	<5	.1
180N	<5	<.1	336S	<5	.2
210N	<5	<.1	30N	<5	.3
240N	<5	<.1	60N	28	.4
270N	8	<.1	90N	39	.3
300N	9	<.1	120N	36	.2
330N	<5	<.1	150N	13	<.1
360N	<5	<.1	180N	11	<.1
390N	<5	<.1	210N	10	<.1
480W 420N	13	<.1	360W 240N	<5	.1

ASSAYERS (ONTARIO) LIMITED

Per _____



ASSAYERS (ONTARIO) LIMITED

33 CHAUNCEY AVENUE TORONTO, ONTARIO M8Z 2Z2 · TELEPHONE (416) 239-3527

Certificate of Analysis

Certificate No. KR-05-28/ #2626

Date: November 22, 1983

Received _____

Samples of Soils

Submitted by Kenty Resources Limited

Att'n: Mr. A. Hopkins
c.c. Mr. C. Hillmer

Sample No.	Au ppb	Ag ppm	Sample No.	Au ppb	Ag ppm
360W 270N	<5	.3	240W 90N	5	<.1
300N	5	.2	120N	<5	<.1
330N	10	.2	150N	<5	.2
360N	<5	.3	180N	<5	.4
390N	5	.7	210N	<5	.6
420N	<5	<.1	240N	No Sample - one bag	
450N	15	.2	300N		
480N	<5	<.1	330N	<5	.3
510N	30	.4	360N	12	.2
540N	<5	.4	390N	<5	.6
570N	<5	.6	420N	<5	.3
600N	<5	.6	450N	<5	.4
630N	<5	.4	480N	<5	.3
660N	<5	.5	510N	<5	.5
690N	<5	.2	540N	<5	.1
360W 707N	<5	.2	570N	<5	.8
240W BL	<5	<.1	600N	<5	.3
27S	<5	.3	630N	<5	.3
30N	<5	<.1	660N	<5	.5
240W 60N	<5	<.1	690N	<5	.4
			240W 720N	18	.2

ASSAYERS (ONTARIO) LIMITED

Per _____



ASSAYERS (ONTARIO) LIMITED

33 CHAUNCEY AVENUE TORONTO, ONTARIO M8Z 2Z2 · TELEPHONE (416) 239-3527

Certificate of Analysis

Certificate No. KR-05/30/#2660

Date: November 28, 1983

Received _____ Samples of Soils

Submitted by Kenty Resources Limited Att'n: Mr. A. Hopkins

c.c: Mr. C. Hillmer

Sample No.	Au ppb	Ag ppm	Sample No.	Au ppb	Ag ppm
240W 750W	<5	<.1	120W 600N	9	<.1
780W	<5	<.1	630N	18	<.1
240W 790W	<5	<.1	660N	<5	<.1
120W BL	27	<.1	690N	12	<.1
30N	24	<.1	720N	<5	<.1
60N	11	<.1	750N	<5	<.1
90N	7	<.1	780N	6	<.1
120N	30	<.1	810N	12	<.1
150N	17	<.1	120W 840N	<5	<.1
180N	5	<.1	0-0 BL	<5	<.1
210N	5	<.1	30N	11	<.1
240N	<5	<.1	60N	47	<.1
270N	7	<.1	90N	17	<.1
300N	<5	<.1	120N	33	<.1
330N	33	<.1	150N	<5	<.1
360N	14	<.1	180N	<5	<.1
390N	<5	<.1	210N	37	<.1
420N	55 †	<.1	240N	45	<.1
540N	93 †	<.1	270N	14	<.1
120W 570N	44 †	<.1	0-0 300N	<5	<.1

ASSAYERS (ONTARIO) LIMITED

Per _____



ASSAYERS (ONTARIO) LIMITED

33 CHAUNCEY AVENUE TORONTO, ONTARIO M8Z 2Z2 · TELEPHONE (416) 239-3527

Certificate of Analysis

Certificate No. KR-05/32/#2660

Date: November 28, 1983

Received _____ Samples of Soils

Submitted by Kenty Resources Limited Att'n: Mr. A. Hopkins
c.c: Mr. C. Hillmer

Sample No.	Au ppb	Ag ppm	Sample No.	Au ppb	Ag ppm
0-0 330N	6	<.1	120E 120N	8	<.1
360N	<5	<.1	150N	<5	<.1
0-0 390N	<5	<.1	180N	<5	<.1
120E BL	7	<.1	210N	12	.2
30S	5	<.1	240N	14	<.1
60S	13 ↓	<.1	270N	8	<.1
90S	51 ↓	<.1	300N	29	<.1
120S	66 ↓	<.1	330N	27	<.1
150S	10	<.1	360N	<5	<.1
180S	5	<.1	390N	15	<.1
210S	6	<.1	120E 410N	<5	<.1
240S	19 ↑	<.1	240E BLA	<5	<.1
270S	38 ↑	<.1	BLB	<5	<.1
300S	31 ↑	<.1	30S	32	<.1
330S	42 ↓	<.1	60S	<5	<.1
360S	21 ↓	<.1	90S	32	<.1
120E 390S	17 ↓	<.1	120S	19	<.1
120E 30N	52 ↓	<.1	150S	6	<.1
60N	23 ↓	<.1	180S	8	<.1
120E 90N	54 ↓	<.1	240E 210S	29	<.1

ASSAYERS (ONTARIO) LIMITED

Per _____



ASSAYERS (ONTARIO) LIMITED

33 CHAUNCEY AVENUE TORONTO, ONTARIO M8Z 2Z2 · TELEPHONE (416) 239-3527

Certificate of Analysis

Certificate No. KR-05/34/#2660

Date: November 28, 1983

Received _____

Samples of Soils

Submitted by Kenty Resources Limited

Att'n: Mr. A. Hopkins
c.c: Mr. C. Hillmer

Sample No.	Au ppb	Ag ppm	Sample No.	Au ppb	Ag ppm
240E 240S	<5	.1	360E BLA	<5	<.1
30N	<5	<.1	BLB	<5	<.1
60N	<5	<.1	30S	<5	<.1
90N	<5	<.1	60S	<5	<.1
120N	5	<.1	90S	6	.2
150N	6	<.1	120S	11	.2
180N	8	<.1	150S	<5	.2
210N	13	<.1	180S	<5	<.1
240N	6	<.1	210S	<5	<.1
270N	16	<.1	240S	<5	<.1
300N	<5	<.1	270S	6	<.1
330N	<5	<.1	300S	19	<.1
360N	24	<.1	330S	<5	<.1
393N	<5	<.1	360S	<5	<.1
270S	<5	<.1	390S	5	.1
300S	5	<.1	570S	10	<.1
330S	6	<.1	600S	15	<.1
360S	11	<.1	630S	20	<.1
390S	<5	<.1	660S	14	<.1
240E 480S	<5	<.1	360E 690S	11	<.1

ASSAYERS (ONTARIO) LIMITED

Per _____



ASSAYERS (ONTARIO) LIMITED

33 CHAUNCEY AVENUE TORONTO, ONTARIO M8Z 2Z2 · TELEPHONE (416) 239-3527

Certificate of Analysis

Certificate No. KR-05/36/#2660

Date: November 30, 1983

Received _____ Samples of Soils

Submitted by Kenty Resources Limited Att'n: Mr. A. Hopkins
c.c: Mr. C. Hillmer

Sample No.	Au ppb	Ag ppm	Sample No.	Au ppb	Ag ppm
360E 720S	<5	.6	360E 390N	<5	<.1
750S	5	.4	480E BLA	17	<.1
780S	7	.4	BLB	<5	.3
810S	<5	.4	30S	13	.4
340S	<5	.3	60S	18	.2
370S	<5	.1	90S	27	.2
385S	<5	.3	120S	17	.2
30N	<5	<.1	150S	22	.3
60N	7	.1	180S	7	.2
90N	<5	.1	210S	25	.3
120N	<5	.3	240S	21	.3
150N	<5	<.1	270S	<5	.3
180N	<5	<.1	300S	<5	<.1
210N	<5	<.1	330S	6	<.1
240N	<5	<.1	360S	27	.3
270NA	<5	<.1	390S	<5	.3
270NB	<5	<.1	30N	<5	.4
300N	5	<.1	60N	<5	.4
330N	<5	<.1	90N	<5	.5
360E 360N	12	<.1	480E 120N	27	.4

ASSAYERS (ONTARIO) LIMITED

Per _____



ASSAYERS (ONTARIO) LIMITED

33 CHAUNCEY AVENUE TORONTO, ONTARIO M8Z 2Z2 · TELEPHONE (416) 239-3527

Certificate of Analysis

Certificate No. KR-05/38/#2660

Date: November 30, 1983

Received _____

Samples of Soils

Submitted by Kenty Resources Limited

Att'n: Mr. A. Hopkins

c.c: Mr. C. Hillmer

Sample No.	Au ppb	Ag ppm	Sample No.	Au ppb	Au ppm
480E 150N	<5	<.1	120E 570S	10	<.1
180N	10	<.1	600S	51	<.1
210N	9	<.1	630S	<5	.2
240N	7	<.1	660S	<5	<.1
270N	<5	<.1	690S	10	<.1
300N	<5	<.1	120E 720S	13	.1
330N	<5	<.1	240E 570S	15	<.1
360N	<5	<.1	600S	14	.2
390N	<5	<.1	630S	<5	.1
570N	<5	.1	660S	<5	.1
600S	<5	.2	690S	<5	.2
630S	<5	<.1	720S	<5	.1
660S	8	<.1	750S	7	<.1
690S	<5	<.1	780S	18	.1
720S	<5	<.1	810S	25	.3
750S	<5	<.1	340S	10	.3
780S	6	<.1	870S	14	.1
810S	N.S.S.	N.S.S.	895S	23	<.1
840S	<5	.4	240E 930S	10	<.1
480E 883S	<5	<.1	600E 8LA	14	.2

ASSAYERS (ONTARIO) LIMITED

Per _____



ASSAYERS (ONTARIO) LIMITED

33 CHAUNCEY AVENUE TORONTO, ONTARIO M8Z 2Z2 · TELEPHONE (416) 239-3527

OM 83-5-C-177

Certificate of Analysis

Certificate No. KR-05/30/#2660 Date: November 28, 1983
 Received _____ Samples of Soils
 Submitted by Kenty Resources Limited Att'n: Mr. A. Hopkins
 c.c: Mr. C. Hillmer

Sample No.	Au ppb	Ag ppm	Sample No.	Au ppb	Ag ppm
240W 750W	<5	<.1	120W 600N	9	<.1
780W	<5	<.1	630N	18	<.1
240W 790W	<5	<.1	660N	<5	<.1
120W BL	27	<.1	690N	12	<.1
30N	24	<.1	720N	<5	<.1
60N	11	<.1	750N	<5	<.1
90N	7	<.1	780N	6	<.1
120N	30	<.1	810N	12	<.1
150N	17	<.1	120W 840N	<5	<.1
180N	5	<.1	0-0 BL	<5	<.1
210N	5	<.1	30N	11	<.1
240N	<5	<.1	60N	47	<.1
270N	7	<.1	90N	17	<.1
300N	<5	<.1	120N	33	<.1
330N	33	<.1	150N	<5	<.1
360N	14	<.1	180N	<5	<.1
390N	<5	<.1	210N	37	<.1
420N	55 †	<.1	240N	45	<.1
540N	93 †	<.1	270N	14	<.1
120W 570N	44 †	<.1	0-0 300N	<5	<.1

ASSAYERS (ONTARIO) LIMITED

Per _____



Report of Work
(Geophysical, Geological,
Geochemical and Expenditures)

W.R. # 1/10

Instructions: - Please type or print.
- If number of mining claims traversed exceeds space on this form, attach a list.

Rollo Temp. man. 27th

The Mi



410155E0022 2.6471 ROLLO

900

Type of Survey(s) **GEOCHEMICAL**

Claim Holder(s) **KENTY RESOURCES LIMITED T.1364**

Address **91 TYCOS DRIVE, TORONTO, Ont. M6B 1W3**

Survey Company **A. Hopkins Consulting Geologist** field work only: Date of Survey (from & to) **6 8 83 17 9 83** Total Miles of line Cut **43.34**

Name and Address of Author (of Geo-Technical report) **Albert Hopkins, B.A.S.C., F.G.A.C., 810 Duplex Av., TORONTO, M4R 1W7.**

Credits Requested per Each Claim in Columns at right

Mining Claims Traversed (List in numerical sequence)

Special Provisions	Geophysical	Days per Claim
For first survey: Enter 40 days. (This includes line cutting)	- Electromagnetic	
	- Magnetometer	
For each additional survey: using the same grid: Enter 20 days (for each additional survey)	- Radiometric	
	Geological	
	Geochemical	20
Man Days	Geophysical	Days per Claim
Complete reverse side and enter total man days here	- Electromagnetic	
	- Magnetometer	
	- Radiometric	
	- Other	
	Geological	
	Geochemical	
Airborne Credits	Electromagnetic	Days per Claim
Note: Special provisions credits do not apply to Airborne Surveys.	Magnetometer	
	Radiometric	

Mining Claim			Mining Claim		
Prefix	Number	Expend. Days Cr.	Prefix	Number	Expend. Days Cr.
P.	575240		P.	642280	
	575241			650398	
	575242			650399	
	575243			650400	
	632126			650401	
	632127			650402	
	632128			650403	
	632129			650404	
	632130			650405	
	632131			650406	
	632132			650407	
	632133			650408	
	632134			650409	
	632135			650410	
	632136			672421	
	632137			672422	
	632138			672423	
	632139			672424	
	642257			672425	
	642258			672426	
	642259			672427	
	642278				
	642279				

RECEIVED
FEB 8 1984

RECORDED
JAN 27 1984

RECORDED
JAN 27 1984

Expenditures (excludes power stripping)

Type of Work Performed

Performed on Claim(s)

Calculation of Expenditure Days Credits

Total Expenditures \$ ÷ 15 =

Total number of mining claims covered by this report of work. **44**

Instructions
Total Days Credits may be apportioned at the claim holder's choice. Enter number of days credits per claim selected in columns at right.

For Office Use Only

Total Days Cr. Recorded **880** Date Recorded **Jan 27 1984** Mining Recorder **[Signature]**

Date Appraised Recorded **July 3/84** Branch Director **[Signature]**

Date **25 Jan '84** Recorded Holder or Agent (Signature) **Albert Hopkins**

Certification Verifying Report of Work
I hereby certify that I have a personal and intimate knowledge of the facts set forth in the Report of Work annexed hereto, having performed the work or witnessed same during and/or after its completion and the annexed report is true.

Name and Postal Address of Person Certifying
Albert Hopkins, B.A.Sc., F.G.A.C., geologist, 810 DUPLEX AV., TORONTO, Ont. M4R 1W7.

Date Certified **25 Jan. 1984** Certified by (Signature) **Albert Hopkins**



July 13/84

1984 06 28

Your File: 1-84
Our File: 2.6471

Mr. Bruce W. Hanley
Mining Recorder
Ministry of Natural Resources
60 Wilson Avenue
Timmins, Ontario
P4N 2S7

Dear Sir:

Enclosed are two copies of a Notice of Intent with statements listing a reduced rate of assessment work credits to be allowed for a technical survey. Please forward one copy to the recorded holder of the claims and retain the other. In approximately fifteen days from the above date, a final letter of approval of these credits will be sent to you. On receipt of the approval letter, you may then change the work entries on the claim record sheets.

For further information, if required, please contact Mr. R.J. Pichette at 416/965-4888.

Yours sincerely,

S.E. Yundt
Director
Land Management Branch

Whitney Block, Room 6643
Queen's Park
Toronto, Ontario
M7A 1W3

File
S. Hurst:mc

Encls.

cc: Kenty Resources Limited
91 Tycos Drive
Toronto, Ontario M6B 1W3

cc: Mr. G.H. Ferguson
Mining & Lands Commissioner
Toronto, Ontario

cc: Albert Hopkins, B.A.S.C. F.G.A.C.
810 Duplex Avenue
Toronto, Ontario
M4R 1W7



Ministry of
Natural
Resources

Notice of Intent
for Technical Reports

1984 06 28

2.6471/1-84

An examination of your survey report indicates that the requirements of The Ontario Mining Act have not been fully met to warrant maximum assessment work credits. This notice is merely a warning that you will not be allowed the number of assessment work days credits that you expected and also that in approximately 15 days from the above date, the mining recorder will be authorized to change the entries on his record sheets to agree with the enclosed statement. Please note that until such time as the recorder actually changes the entry on the record sheet, the status of the claim remains unchanged.

If you are of the opinion that these changes by the mining recorder will jeopardize your claims, you may during the next fifteen days apply to the Mining and Lands Commissioner for an extension of time. Abstracts should be sent with your application.

If the reduced rate of credits does not jeopardize the status of the claims then you need not seek relief from the Mining and Lands Commissioner and this Notice of Intent may be disregarded.

If your survey was submitted and assessed under the "Special Provision-Performance and Coverage" method and you are of the opinion that a re-appraisal under the "Man-days" method would result in the approval of a greater number of days credit per claim, you may, within the said fifteen day period, submit assessment work breakdowns listing the employees names, addresses and the dates and hours they worked. The new work breakdowns should be submitted direct to the Land Management Branch, Toronto. The report will be re-assessed and a new statement of credits based on actual days worked will be issued.

Mining Lands Comments

To: Geophysics

Comments			
<input type="checkbox"/> Approved	<input type="checkbox"/> Wish to see again with corrections	Date	Signature

To: Geology - Expenditures

Comments			
<input type="checkbox"/> Approved	<input type="checkbox"/> Wish to see again with corrections	Date	Signature

To: Geochemistry *Pr. Fosterville*

Comments			
<i>No description of analytical methods</i>			
<i>No listing of lab results</i>			
<i>LD</i>			
<i>lga</i>			
<input checked="" type="checkbox"/> Approved	<input type="checkbox"/> Wish to see again with corrections	Date	Signature
		<i>April 3rd 1984</i>	<i>J.A. [Signature]</i>

To: Mining Lands Section, Room 6462, Whitney Block. (Tel: 5-1380)

30/3/84 - D.K.

ADDRESS

Approved Reports of Work
sent out

Notice of Intent filed

Approval after Notice of Intent
sent out

Duplicate sent to Resident
Geologist

Duplicate sent to A.F.R.O.

TELEGRAM(ME)	À PERCEVOIR	DATE	À TO
FRANCO PREPAID	COLLECT	8, 8, 83	DR A. HOPMINS
URGENT RUSH	LETRE DE NUIT NIGHT LETTER	HEURE - TIME	ADRESSE ADDRESS
CABLOGRAM(ME)			
TELETYPE			
MEMO			
NUMERO TELEX NUMBER			

Bees Albert,
Below are the names and
addresses of people who did the VENTY

RESOURCES line CUTTING -

1. YVON AUDY 206 RUE THIBAUT Mtl D'or QUEB.
2. GERARD FAUCHER 298 6e RUE Mtl D'or QUEBEC
3. JEAN ST LAURENT ST GERARD DE BERRY QUEBEC
4. LUCIEN ST LAURENT 22 CHATEAUSUWAY ROYAL QUEB.-
5. ALAIN PATRY 22 MONTCALM Mtl D'or QUEB.-
6. DANIEL ST LOUIS 61 MONTCALM Mtl D'or QUEB.-

The work was performed between the 13th and the 20th
of JULY - 6 men for 8 days @ 10 hrs/day = 480 man/hrs = 60 man days

DE
FROM
1/ours Tully
R. Smith, R. Coor. -

TELEGRAM(ME)		A PERCEVOIR	
FRANCO	PREPAID	COLLECT	
URGENT		LETTRE DE NUIT	
RUSH		NIGHT LETTER	
CABLOGRAM(ME)			
TELETYPE			
MEMO			
NUMÉRO TELEX NUMBER			

DATE		A TO	
8.8.83		NT A. HOPKINS	
HEURE - TIME		ADRESSE ADDRESS	
		Beau Albert Beau are the names and addresses of people who did the KENTY	
RESOURCES Line CUTTING -			

1. YVON AUDY 206 RUE THISHULT MTL DR QUE.
 2. GERARD FAUCHER 298 6^e RUE MTL DR QUE.
 3. JEAN ST LAURENT ST GERARD DE BERRY QUEBEC
 4. LUCIEN ST LAURENT ST GERARD DE BERRY QUEBEC
 5. ALAIN PATRY 22 CHATEAUGUAY ROYAL QUE.
 6. DANIEL ST LOUIS 61 MONTCALM MTL DR QUE.
- The work was performed between the 13th and the 20th of JULY - 6 men for 8 days @ 10 hrs/day = 480 man/hrs = 60 man days
- Yours Truly
 P. Kelly, P. Cost. -

ASSESSMENT WORK BREAKDOWN

1. FIELD WORK

Type of Work	Soil Sampling	Name & Address	Dates Worked (10-hr. days)	Number of 8 hour days
Ken Craibbe,		283 Riverside Dr., OAKVILLE, Ont.	6-10 Aug. '83.	6
Grant McCollum,		R.R.#2, LISBON, N.Y., U.S.A.	6-13 " "	10
Shawn Cool,		Storm Creek Cottages, OPISHING L., Ont.	6-13 " "	10
Michael Gauthier,		205-6 th Av. TIMMINS, Ont.	12-13 " "	2½
Claude Gauthier,		" " " " " "	12-13 " "	2½
Mark Skurtic,		21-2 nd Av., SCHUMACHER, Ont.	9-13 " "	6
Rich Kohlbacher,		690 Melrose Av., TIMMINS, Ont.	9-13 " "	6
sub Total				43

2. CONSULTANTS

Name & Address	10-hour Days. Dates Worked (specify in field or office)	Number of 8 hour days
Albert Hopkins	Field:- 15-21 Feb '83; 16-22 May; 7-27 June;	
810 Duplex Av.	4-10 Aug; and 9-17 Sept. 1983 = 51 man-days (10 hrs.)	63
TORONTO, Ont.	Office:- 19-23 Jan. 1984 = 5 days of 8 hrs.	5
MAR 1W7.	sub Total	68

3. DRAUGHTSMAN, TYPING, OTHERS (specify)

Name & Address	Type of Work	Dates Worked	Number of 8 hour days
M.L. Pendrith	Processing & Plotting Assays	28 October 1983	5
53 Alexandra Bld.	Drafting & Colouring Maps	up to	5
TORONTO, Ont.	Clerical, letters, forms, etc.	3 December 1983	5
MAR. 1M1.	sub total		15
TOTAL 8 HOUR TECHNICAL DAYS			126

4. LINE-CUTTING

Contractor Name	Address	Dates Worked	Number of 8 hour days
Contractor ROSS	701-170 Roxhampton Av	16 June - 7 July '82 cutting & chaining (10-hrs)	
Supervisor TOMS	TORONTO. MAP. 1R2.	+ 2 hrs. paper work every night (= 12 hr. days)	33
Contractor Serge Jolin	Gen. Del., Duparquet,	16-23 June '82 } 10-hr. days =	25
Contractor Robt. Noel	P.Q. GOZ. 1W0	+ 25 Jun - 6 July. } $\frac{8+12}{2} \times 10 =$	25
Contractor René	Exploreco Inc., Box 42,	10 July - 10 Sept. 1983	25
paper work Coda	Val d'Or, P.Q. J9P. 4N9		
6 men	cut lines + chained	on the property from 13-20 July '83, 10-hr days.	60
see attached sheet for these 6 men's names, address & dates			
TOTAL 8 HOUR LINE-CUTTING DAYS			168.

ASSESSMENT WORK BREAKDOWN

1. Type of Survey Geochemical (humus "A Horizon" soil Sampling)
2. Township or Area Rollo Twp., Porcupine Mining Div. (m.1082).
3. Numbers of ⁴⁴ Mining Claims Traversed by Survey P.575240 - 243 incl. = 4 claims,
632126 - 139 " = 14 "
642257 - 259 " = 3 "
642278 - 280 " = 3 "
650398 - 410 " = 13
672421 - 427 " = 7
4. Number of Miles of Line Cut 43.34 miles (69.74 kms.), Total = 44 claims,
Flown
- *5. Number of Stations Established 2325, - 2970 humus soil samples taken and
assayed.
- *6. Make and type of Instrument Used ---
- *7. Scale Constant or Sensitivity ---
- *8. Frequency Used and Power Output ---
9. Summary of Assessment Credits (details on reverse side)
 - Total 8 hour Technical Days (Include Consultants, ^{Samplers,} Draughting etc.) 126
 - Total 8 hour Line-Cutting Days 168 (applied for in prev. geol. survey)

Calculation

$$\frac{126}{\text{Technical}} \times 7 = \frac{882}{\text{Line-cutting}} + \frac{\text{see*}}{\text{Line-cutting}} = \frac{882}{\text{Number of claims}} \div \frac{44}{\text{Number of claims}} = \frac{20}{\text{Assessment credits per claim}}$$

* Line-Cutting (168 man-days) has already been claimed for Geological Survey, by Robt. Graham, geologist, of Calender, Ont. recently.
 The dates listed on this form represent working time spent entirely within the limits of the above listed claims Check
 If otherwise, please explain _____

Dated: 25 January 1984. Signed: Albert Hopkins.

- Note:
- (A) * Complete only if applicable.
 - (B) Complete list of names, addresses and dates on reverse side.
 - (C) Submit separate breakdown for each type of survey.
 - (D) Submit in duplicate.

HOPKINS EXPLORATION CONSULTANTS

MINING ENGINEERS, GEOLOGISTS, GEOPHYSICISTS

810 Duplex Avenue,
TORONTO, Ont.
M4R 1W7

TELEPHONE
416.489.8375.

BRANCH OFFICE

BEARDMORE, Ontario.

Mr. Fred Matthews' Office,
Tech. Assessment Work Review,
O. M. N. R.,
6610 Whitney Block,
Queen's Park,
TORONTO, Ont.

RECEIVED

MINING LANDS SECTION

Gentlemen:
Enclosed please find my Report on a
Geochemical Survey with maps, in duplicate, performed
over 44 Mining claims of Kenty Resources Ltd.,
(Lic. No. T. 1364). The enclosed copy of "Report of Work"
claiming 20 man-days per claim was recently filed with
the Porcupine Mining Recorder. Enclosed also is the
"Assessment Work Breakdown".

Please let us know if any further data are
required, and when this work credit has been
approved.

Yours truly,

Albert Hopkins, B.A.Sc.
Geologist.

(encls.)

**Technical Assessment
Work Credits**

File
2.6471

Date
1984 06 28

Mining Recorder's Report of
Work No. 1-84

Recorded Holder
KENTY RESOURCES LIMITED

Township or Area
ROLLO TOWNSHIP

Type of survey and number of Assessment days credit per claim	Mining Claims Assessed
<p>Geophysical</p> <p>Electromagnetic _____ days</p> <p>Magnetometer _____ days</p> <p>Radiometric _____ days</p> <p>Induced polarization _____ days</p> <p>Other _____ days</p>	<p>p 575240 to 243 inclusive 632126 to 139 inclusive 642257 to 259 inclusive 642278-79-80 650398 to 410 inclusive</p>
<p>Section 77 (19) See "Mining Claims Assessed" column</p>	
<p>Geological _____ days</p>	
<p>Geochemical _____ 20 _____ days</p>	
<p>Man days <input type="checkbox"/> Airborne <input type="checkbox"/></p>	
<p>Special provision <input checked="" type="checkbox"/> Ground <input checked="" type="checkbox"/></p>	
<p><input type="checkbox"/> Credits have been reduced because of partial coverage of claims.</p>	
<p><input type="checkbox"/> Credits have been reduced because of corrections to work dates and figures of applicant.</p>	

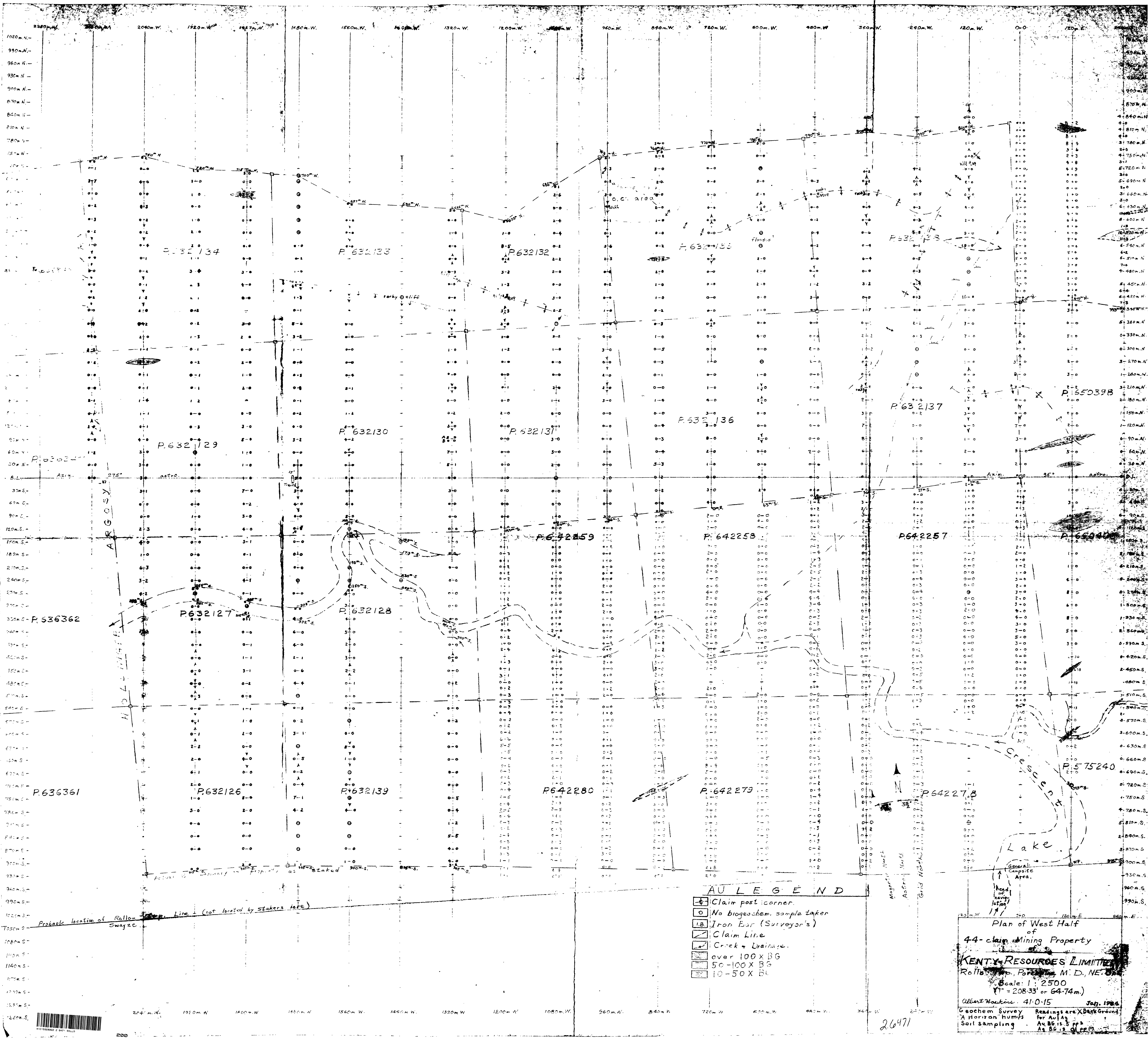
Special credits under section 77 (16) for the following mining claims

No credits have been allowed for the following mining claims

not sufficiently covered by the survey Insufficient technical data filed

P 672421 to 427 inclusive

The Mining Recorder may reduce the above credits if necessary in order that the total number of approved assessment days recorded on each claim does not exceed the maximum allowed as follows: Geophysical — 80; Geological — 40; Geochemical — 40; Section 77 (19)—60;



Probable location of Roller Line (not located by stakers here)

- AU LEGEND**
- Claim post (corner)
 - No bioasschem. sample taken
 - Iron Bar (Surveyor's)
 - Claim Line
 - Creek + Drainage
 - over 100 X BG
 - 50-100 X BG
 - 10-50 X BG

Plan of West Half of
44-claim Mining Property
KENTY RESOURCES LIMITED
Roller Line, Parkers, M. D., NE. 1/4
Scale: 1:2500
(1" = 208.33 or 64.74m)
Albert Hopkins 41:0:15 Jan. 1984
Geochem Survey for Au/Ag Readings are X Back Ground
Soil sampling Au BG is 5 ppb Ag BG is 0.1 ppm

26471