



410156E0095 11 SWAYZE

Diamond Drilling

Township of SWAYZE

Report NO 11

Work performed by: Flint Rock Mines

Claim NO	Hole NO	Footage	Date	Note
S 116847	1	133.0'	July/62	
	1-A	28.0'	Aug/62	
	2	129.0'	July/62	
	3	114.0'	July/62	
	3-A	37.0'	Aug/62	
	3-B	32.0'	Aug/62	
	3-C	34.0'	Aug/62	
	4	130.0'	July/62	
	4-A	36.0'	Aug/62	
	5	132.0'	July/62	
	5-A	207.0'	July/62	
	6	104.0'	July/62	
	6-A	104.0'	July/62	
	6-B	110.0'	July/62	
	6-C	101.0'	Aug/62	
	7	107.0'	Aug/62	
	8	127.0'	Aug/62	
	9	167.0'	Oct/62	

Notes:

Diamond Drilling

Township of SWAYZE

Report NO 11

Work performed by:

Claim NO	Hole NO	Footage	Date	Note
S 116847	10	124.0'	Oct/62	
	11	115.0'	Oct/62	
	12	379.0'	Oct/62	
	13	173.0'	Oct/62	
S 116848	11	266.5'	Feb/63	
	12	135.0'	Feb/63	
	12-A	182.0'	Feb/63	

Notes:

Diamond Drill Hole Log

NUMBER 1 **BEARING AT COLLAR** N 20 W **DIP AT COLLAR** 45
LOCATION Cree Lake, Swayze Township
 Latitude 17°N of # 3 post of claim S-116847
 Departure 630'E " 3 " " " "

SURVEY DATA		
LOCATION	BEARING	DIP
Started	July 15th	1962
Completed	" 18th	1962

FLINT ROCK LINES LTD.

FROM	TO	DESCRIPTION	CORE RECOVERED
0.0	14.0	Casing	
14.0	27.0	Greenst. w. calc. and quartz seams at 16.0 8" brecciated, with calcite 17.5 1/2" shear @ 30 21.0 6" brecciated 22.5 4" calc. shear @ 20	
27.0	35.0	Tuff w. calc. and quartz seams	
35.0	37.0	" w. " " " " " , some sulphide	
37.0	40.0	" w. " " " " " , some sulphide	
40.0	41.0	" w. " " " " " , some sulphide	
41.0	46.5	" w. " " " " " , specs of sulphide	
46.5	47.5	" w. " " " " " , some sulphide	
47.5	51.0	Greenst. w. calc. and quartz seams	
51.0	67.0	Tuff w. " " " " " " 53.5 calc. shear @ 25 58.0 " " " @ 35	
67.0	68.0	Greenst. w. calc. and quartz seams, some sulphide	
68.0	77.5	Tuff w. " " " " " , specs of sulphide	
77.5	78.5	" w. " " " " " , some sulphide	
78.5	84.5	Greenst. w. " " " " " "	
84.5	90.5	" w. seams of chlorite	
90.5	93.0	" w. calcite and quartz seams, some sulphide	
93.0	99.0	" w. seams of chlorite	
99.0	101.0	" w. calc. and quartz seams, some sulphide	
101.0	124.5	" w. " " " " " , specs of sulphide	
124.5	125.7	" w. " " " " " , some sulphide	
125.7	133.0	" w. " " " " " "	

End of hole core recovery 99.8 %

Sample	Interval	Description
"	35.0-37.0	Cr. 1 (24")
"	40.0-41.0	Cr. 2 (12")
"	46.5-47.5	Cr. 3 (12")
"	67.0-68.0	Cr. 4 (12")
"	77.5-78.5	Cr. 5 (12")
"	90.5-93.0	Cr. 6 (30")
"	99.0-101.0	Cr. 7 (24")
"	124.5-125.7	Cr. 8 (15")

LOGGED BY NORWESCON DEV. CO. Red Lake Ont.

Logged by E.M. Lewin

July 21st. 1962

E.M. Lewin
E.M. Lewin

Diamond Drill Hole Log

NUMBER 1A. BEARING AT COLLAR N 10 E

DIP AT COLLAR 45

LOCATION Cree Lake, Swayze Township

Latitude 70' N of # 3 post of Claim S-116847

Departure 605' E " # 3 " " "

FLINT ROCK MINES LTD.

SURVEY DATA

LOCATION	BEARING	DIP
Started	Aug. 9th.	1962
Completed	Aug. 10th.	1962
Depth	28'	

FROM	TO
0.0	5.0
5.0	8.5
8.5	17.5
17.5	19.3
19.3	28.0

DESCRIPTION

Casing

Tuff

Greenstone with calcite and quartz seams

Mostly quartz, well mineralized

Greenstone with calcite and quartz seams

End of hole, core recovery 99.8%

Sample 17.4-19.4 Cr. 37 (24")

Drilled by Norwescon Dev. Co. Red Lake, Ont.

Logged by E.M. Lewin

August 10th. 1962

E.M. Lewin
E.M. Lewin

CORE
RECOV-
ERED

Diamond Drill Hole Log

NUMBER 2 BEARING AT COLLAR S 20 E
 DIP AT COLLAR 45

Started July 18th. 1962
 Completed July 20th. 1962
 Depth 129'

LOCATION Cree Lake, Swayze Township
 Latitude 152'N of " 3 post of claim S-116847
 Departure 595'E " 3 " " " "

SURVEY DATA		
LOCATION	BEARING	DIP

FLINT ROCK MINES LTD.

FROM	TO	DESCRIPTION	CORE RECOVERED
0.0	8.0	Casing	
8.0	15.0	Tuff	
15.0	16.5	" w. calc. and quartz seams	
16.5	17.0	" w. " " " " , specs of sulphide	
17.0	20.0	" w. " " " " "	
20.0	21.2	" w. " " " " , some sulphide	
21.2	28.0	" w. " " " " "	
28.0	31.0	at 25.5 quartz stringer @ 45	
31.0	33.0	Greenst. w. calcite and quartz seams. specs of sulph	
33.0	34.0	" w. " " " " " some sulphide	
34.0	38.3	" w. " " " " "	
38.3	40.0	" w. " " " " " some sulphide	
40.0	46.0	" w. " " " " "	
46.0	47.5	" w. " " " " " some sulphide	
47.5	71.0	" w. " " " " "	
71.0	82.0	52.0 quartz stringer @ 30	
82.0	83.0	" w. calc. and quartz seams, some sulphide	
83.0	99.5	" w. " " " " " "	
99.5	103.7	" w. " " " " " , some sulphide	
103.7	104.7	" w. " " " " " "	
104.7	129.0	" w. " " " " " "	

End of hole, core recovery 99.7 %

Sample 20.0-21.2 Cr. 9 (14")
 " 33.0-34.0 Cr. 10 (12")
 " 38.3-40.0 Cr. 11 (20")
 " 82.0-83.0 Cr. 12 (12")
 " 103.7-104.7 Cr. 13 (12")

Drilled by NORWESCON DEV. CO. Red Lake, Ont.

Logged by E.M. Lewin

July 21st. 1962

E.M. Lewin
 E.M. Lewin

Diamond Drill Hole Log

NUMBER 3 BEARING AT COLLAR N 20 W

DIP AT COLLAR 45

LOCATION Cree Lake, Swayze Township

Latitude 35°N of # 3 post of claim S-116847

Departure 680' E " 3 " " " " "

• FLINT ROCK MINES LTD.

SURVEY DATA		
LOCATION	BEARING	DIP
Started	July 20th. 1962	
Completed	July 22nd. 1962	
Depth	114'	

FROM	TO	DESCRIPTION	CORE RECOVERED
0.0	20.5	Casing	
20.5	25.0	Greenst.w.calc.and quartz seams	
		at 23.0 1/2" calc.and quartz @ 80	
25.0	40.5	Tuff w. calc.and quartz seams	
		25.0-25.5 some sulphide	
40.5	41.1	Tuff with sulphide	
41.1	47.0	Greenst.w.calc.and quartz seams, specs of sulphide	
47.0	51.5	" w. " " " " "	
51.5	53.0	Tuff w. " " " " " , specs of sulphide	
53.0	64.5	" w. " " " " "	
		57.8 2" calcite @ 45	
		62.5-63.0 some sulphide	
64.5	77.3	Greenst.w.calc.and quartz seams	
		67.0 2" calc. shear @ 30	
77.3	78.3	Greenst.w.calc.and quartz seams, some sulphide	
78.3	80.0	" w. quartz, well mineralized	
80.0	82.5	" w. quartz and calcite, with sulphide	
82.5	84.5	" w. " " " " stringers, with sulphide	
84.5	114.0	" w. " " " " seams	
		87.0 1" quartz @ 65	
		87.0-88.0 specs of sulphide	
		98.0 1" calcite shear @ 30	
		End of hole, core recovery 99.6 %	
Sample	40.5-41.6	Cr.14 (14")	
"	51.5-53.0	Cr.15 (18")	
"	77.3-78.3	Cr.16 (12")	
"	78.3-80.0	Cr.17 (20")	
"	80.0-82.5	Cr.18 (30")	
"	82.5-84.5	Cr.19 (24")	

Drilled by **NORWESCON DEV.CO.** Red Lake.Ont.

Logged by **E.M.Lewin**

July 22nd. 1962,

E.M. Lewin
E.M. Lewin

Diamond Drill Hole Log

NUMBER 3 A BEARING AT COLLAR N 20 E

DIP AT COLLAR _____

LOCATION Cree Lake, Swayze Township

Latitude 90°N of # 3 Post of claim S-116847

Departure 675'E " " " " " "

SURVEY DATA

LOCATION	BEARING	DIP
Started	Aug. 4th 1962	
Completed	Aug. 5th 1962	
Depth	37'	

FLINT ROCK MINES LTD.

FROM	TO
0.0	7.0
7.0	14.0
14.0	22.0
22.0	29.2
29.2	30.4
30.4	37.0

DESCRIPTION
 Casing
 Tuff with calcite and quartz seams
 Greenstone with calcite and quartz seams
 Tuff " " " " "
 at 26.5 1/2" calcite stringer with Sulphide
 quartz stringers with sulphide
 Tuff.

End of hole, core recovery 99.7 %

Sample 29.0-30.5 Cr. 34 (18")

Drilled by NORWESCON DEV. CO. RED LAKE, ONT.

Logged by E.M. Lewin

E.M. Lewin
 August 6th. 1962

CORE RECOVERED

Diamond Drill Hole Log

NUMBER 3 B BEARING AT COLLAR N 20 E

DIP AT COLLAR 45

LOCATION Cree Lake, Swayze Township

Latitude 75' N of # 3 post of claim S-116847

Departure 632' E " " " " " "

FLINT ROCK MINES LTD.

SURVEY DATA

LOCATION	BEARING	DIP
Started	Aug. 5th. 1962	
Completed	Aug. 6th. 1962	
Depth	32'	

FROM	TO
0.0	9.0
9.0	10.5
10.5	11.5
11.5	14.2
14.2	29.0
29.0	32.0

DESCRIPTION

Casing
 Tuff
 Lost core
 Tuff with calcite and quartz seams
 at 13.5 1/2" quartz seam #50
 Greenstone with calcite and quartz seams
 14.2 3" mostly quartz, well mineralized
 22.0 1/2" quartz and chlorite #60
 Tuff with calcite and quartz seams

End of hole, core recovery 96.5 %

Sample 14.2-15.2 Cr. 35 (12")

Drilled by NORWESCON DEV. CO. Red Lake, Ont.

Logged by E.M. Lewin

August 6th. 1962

E.M. Lewin
 E.M. Lewin

CORE
 RECOV-
 ERED

Diamond Drill Hole Log

NUMBER 4 BEARING AT COLLAR N 20 W
 DIP AT COLLAR 45

LOCATION Cree Lake, Swayze Township
 Latitude 42°N of # 3 post of claim S-116847
 Departure 730'E " 5 " " " "

SURVEY DATA

LOCATION	BEARING	DIP
Started July 22nd. 1962		
Completed July 23rd. 1962		
Depth 130'		

FLINT ROCK MINES LTD.

FROM	TO	DESCRIPTION	CORE RECOVERED
0.0	13.0	Casing	
13.0	31.6	Tuff w. calc. and quartz seams at 31.0 4" very well mineralized	
31.5	44.0	Greenst. w. calc. and quartz seams	
44.0	53.0	quartzite w. calc. and quartz seams 47.0-49.0 well mineralized 50.5-52.5 fair mineralization	
53.0	61.5	Greenst. w. calc. and quartz seams 54.2 3" with quartz and sulphide 55.5 1/2" shear w 20 55.7 8" with sulphide 59.0-61.0 some sulphide, mostly pyrite cubes	
61.5	70.0	quartzite	
70.0	94.5	Greenst. w. calc. and quartz seams 92.5-93.0 well mineralized	
94.5	96.5	Brecciated with, quartz and calcite	
96.5	102.5	Tuff	
102.5	104.5	Greenstone	
104.5	116.5	Impure quartzite 106.0-107.0 fair mineralization 111.5-112.0 light mineralization	
116.5	120.0	Tuff	
120.0	130.0	Impure quartzite	

End of hole, core recovery 99.8 %

Sample 92.5-93.7 Cr. 24 (14")

DRILLED BY CONWESTCO DEV. CO. Red Lake, Ont.

Logged by E.M. Lewin

July 26th. 1962

E.M. Lewin
 E.M. Lewin

Diamond Drill Hole Log

NUMBER 5 BEARING AT COLLAR N 20 W
 DIP AT COLLAR 45

LOCATION Cree Lake, Swayze Township

Latitude 55°N of # 3 post of claim S-116847
 Departure 780'E " 3 " " " "

FLINT ROCK MINES LTD.

SURVEY DATA

LOCATION	BEARINGS	DIP
Started	July 23rd. 1962	
Completed	July 25th. 1962	
Depth	132'	

FROM	TO	DESCRIPTION	CORE RECOVERED
0.0	20.5	Tuff w. calc. and quartz seams at 2.0 1/2" quartz \downarrow 65 2.5 1/2" calcite 45 3.0-3.5 well mineralized 20.0 2" quartz shear \downarrow 70, with specs of sulphide	
20.5	37.5	Greenst. w. calc. and quartz seams 24.5 2" quartz shear \downarrow 45 30.0 2" " " \downarrow 70 30.5 1" " " \downarrow 70 35.5 1/2" " stringer \downarrow 45	
37.5	42.0	Impure quartzite	
42.0	49.0	Tuff w. calc. and quartz seams 43.0 fracture \downarrow 30, with quartz and heavy sulph. 48.0-49.0 specs of sulphide	
49.0	53.0	Greenst. w. calc. and quartz seams 49.5 quartz and calc. shear \downarrow 45	
53.0	63.5	Impure quartzite	
63.5	67.5	Tuff w. calc. and quartz seams	
67.5	77.5	Impure quartzite	
77.5	132.0	Tuff w. calc. and quartz seams 76.5 quartz and calc. shear \downarrow 20 78.0 quartz seam \downarrow 75, with sulphide 79.2-81.5 quartz str. at 10, w. sulphide 85.0 2" w. quartz and sulphide 90.0 4" w. " " " 93.5 6" quartz and chlorite shear 103.0 1/2" quartz stringer \downarrow 15 106.5 2" quartz and chlorite 116.0-117.0 specs of sulphide 123.0 1" quartz and chlorite w sulphide 127.5 6" chlorite and quartz w. sulphide	
		End of hole, core recovery 99.7 %	
		Sample 3.0-4.0 Cr. 25 (12")	

DRILLED BY NORWESCON DEV. CO. Red Lake, Ont. Logged by E.M. Lewin

July 27th. 1962

E.M. Lewin
 E.M. Lewin

Diamond Drill Hole Log

NUMBER 5 A BEARING AT COLLAR S 20 E

DIP AT COLLAR _____
 LOCATION Cree Lake, Swayze Township

Latitude 55°N of # 3 post of claim S-116847
 Departure 778'E " 3 " " " "

SURVEY DATA

LOCATION	BEARING	DIP
Started	July 25th. 1962	
Completed	July 27th. 1962	
Depth	207	

FLINT ROCK MINES LTD.

FROM	TO	DESCRIPTION	CORE RECOVERED
0.0	2.0	Casing	
2.0	2.5	Greenst.w.calcite and quartz seams	
2.5	15.0	Tuff w. " " " "	
15.0	21.5	Greenst.w. " " " " at 7.5-9.0 well mineralized	
21.5	40.0	Tuff w.calc.and quartz seams 24.0 6" fairly well mineralized 34.5 1/2" quartz str.w.specs of sulphide 34.5-35.0 fair mineralization	
40.0	52.5	Greenst.w.calc.and quartz seams	
52.5	184.0	Tuff w. " " " " ,w.specs of sulphide 53.5-55.0 fair mineralization 132.0 2"well mineralized 139.0c calcite w.specs of sulphide 174.0 6" shear w45 178.0 2" shear w60	
184.0	189.0	Brecciated w.chlorite,lightly mineralized	
189.0	195.0	Tuff w.calc.and quartz seams 194.5-195.0 specs of sulphide,sheared w60	
195.0	207.0	Tuff w.calcite and quartz seams,with specs of sulphide	
		End of hole,core recovery 99.7 %	
		Sample 53.5-55.0 Cr.26 (18")	

Drilled by NORWESCON DEV.CO.Red Lake,Ont

Logged by E.M.Lewin

July 27th.1962

E.M. Lewin
 E.M. Lewin

Diamond Drill Hole Log


NUMBER 6 **BEARING AT COLLAR** N 45 W
DIP AT COLLAR 42
LOCATION Creel Lake, Snygge Township
 Latitude 105°N or # 3 post of claim 5-116847
 Departure 875°E " 3 " " " "

SURVEY DATA		
LOCATION	BEARING	DIP
Started July 29th. 1962		
Completed July 30th. 1962		
Depth 104'		

FLINT ROCK MINES LTD.

FROM	TO	DESCRIPTION	CORE RECOVERED
0.0	6.0	Casing	
6.0	12.0	Tuff w. calc. and quartz seams	
12.0	13.5	porphyry (feldspar)	
13.5	14.5	Tuff w. calc. and quartz seams	
14.5	16.5	porphyry	
16.5	31.5	Greenst. w. calc. and quartz seams	
31.5	37.5	Tuff w. " " " "	
37.5	42.5	Cherty	
		at 40.0 specs of sulphide	
42.5	51.0	porphyry	
51.0	55.0	Tuff w. calc. and quartz seams	
55.0	56.0	Cherty	
56.0	65.0	Tuff w. calc. and quartz seams	
		56.5 3" quartz & chlorite well mineralized	
		59.0 sulphide	
65.0	71.0	Greenst. w. calc. and quartz seams	
		65.8 1/2" quartz well mineralized	
71.0	83.5	Cherty	
		79.5 4" with quartz well mineralized	
		82.0 6" with fair mineralization	
83.5	96.0	Tuff w. calc. and quartz seams	
96.0	97.5	White quartz with specs of sulphide	
97.5	104.0	Tuff w. calc. and quartz seams	
		End of hole, core recovery 99.6%	
		Sample 95.5-96.0 Cr. 27 (18")	
		Sample 79.0-80.0 Cr. 28 (12")	

Drilled by NORWESCON DEV. CO. RED LAKE, ONT. Logged by E.M. Lewin


 August 1st. 1962

Diamond Drill Hole Log

NUMBER 6 B BEARING AT COLLAR N 20 W

DIP AT COLLAR 45

LOCATION Cree Lake, Swayze Township

Latitude 77 N of # 3 post of claim S-116847

Departure 850 E " 3 " " " "

SURVEY DATA

LOCATION	BEARING	DIP
Started July 30th, 1962		
Completed Aug. 1st, 1962		
Depth 110'		

FLINT ROCK MINES LTD.

FROM	TO
0.0	6.0
6.0	8.0
8.0	12.0
12.0	15.5
15.5	39.0
39.0	40.5
40.5	49.5
49.5	77.0
77.0	80.5
80.5	86.5
86.5	97.5
97.5	98.5
98.5	99.5
99.5	105.5
105.5	110.0

	DESCRIPTION	CORE RECOVERED
	Casing	
	Greenstone	
	Tuff w. calcite and quartz seams, specs of sulphide	
	Impure quartzite	
	Tuff w. calc. and quartz seams	
	at 29.5 quartz and chlorite w. some sulphide	
	Greenst. w. quartz stringers, fair mineralization	
	Tuff w. calc. and quartz seams	
	Tuff w. chlorite, and calc. & quartz seams	
	86.5 1/2" calcite w. cubes of iron pyrite	
	Impure quartzite	
	80.2 1" w. quartz and sulphide	
	Chert w. calc. and quartz seams	
	Tuff w. " " " "	
	Cherty	
	Cherty w. calc. and quartz seams, some quartz & sulph.	
	Cherty	
	Chert	

End of hole, core recovery 99.7 %

Sample 98.5-99.5 Cr. 29 (12")

Sample 38.8-40.8 Cr. 30 (24")

Drilled by NORWESCON Dev. Co. Red Lake, Ont.

Logged by S.M. Lewin

August 2nd, 1962

S.M. Lewin
S.M. Lewin

Diamond Drill Hole Log

NUMBER 6 C BEARING AT COLLAR N 20 W
 DIP AT COLLAR 45

LOCATION Cree Lake Swayze Township
 Latitude 65°N of # 3 post of claim S-116847
 Departure 800' of # 3 " " " "

SURVEY DATA

LOCATION	BEARING	DIP
Started	<u>AUG. 1st. 1962</u>	
Completed	<u>AUG. 3rd. 1962</u>	
Depth	<u>101'</u>	

FLINT ROCK MINES LTD.

FROM	TO
0.0	5.0
5.0	18.0
18.0	25.2
25.2	31.5
31.5	38.0
38.0	45.5
45.5	52.0
52.0	58.0
58.0	63.0
63.0	65.0
65.0	68.0
68.0	72.5
72.5	73.7
73.7	75.0
75.0	78.5
78.5	79.0
79.0	85.0
85.0	89.5
89.5	97.0
97.0	101.0

DESCRIPTION

Casing
 Tuff
 Greenst. w. calc. and quartz seams, contact @ 30
 Tuff w. " " " "
 Greenst. w. " " " " , specs of sulphide
 quartzite w. " " " "
 Tuff w. " " " "
 Greenst. w. " " " "
 " w. " " " " , with chlorite
 Tuff w. " " " "
 Greenst. w. " " " "
 Tuff
 Mostly quartz, well mineralized
 Tuff w. quartz stringers, slight mineralization
 Tuff w. calc. and quartz seams, specs of sulphide
 Tuff w. quartz stringers, fair mineralization
 Greenst. w. calc. and quartz seams
 Impure quartzite
 Chert, slight mineralization, contact @ 30
 Tuff w. calc. and quartz seams

End of hole, core recovery 97.8 %

Sample 72.4-73.9 Cr. 31 (18")

Drilled by NORWESCON DEV. CO. Red Lake, Ont.

Logged by E.M. Lewin

August 3rd. 1962

E.M. Lewin
 E.M. Lewin

CORE
 RECOV-
 ERED

Diamond Drill Hole Log

SURVEY DATA

NUMBER 7 BEARING AT COLLAR N 20 W
 DIP AT COLLAR 45

LOCATION	BEARING	DIP
Started	Aug. 10th./62	
Completed	" 11th./62	
Depth	107'	

LOCATION Cree Lake Swayze Township
 Latitude 15' N of # 3 post claim S-116847
 Departure 580' E " 3 " " " " " "

FLINT ROCK MINES LTD.

FROM	TO
0.0	11.0
11.0	30.5
30.5	64.7
64.7	66.2
66.2	73.5
73.5	83.0
83.0	83.5
83.5	85.5
85.5	91.0
91.0	107.0

DESCRIPTION

Casing
 Greenstone with calcite and quartz seams
 at 23.5 splash of quartz with sulphide
 28.5 1/2" quartz shear - 50
 Tuff with calcite and quartz seams
 33.0 1/2" quartz shear - 45
 48.5 1/2" quartz str.w.specs of sulphide
 63.5 1" " " " " "
 quartz and quartz str., well mineralized
 Tuff with calcite and quartz seams
 68.5 1/2" quartz - 60
 Greenst.w. calcite and quartz seams
 72.9 1/4" calcite - 60
 Tuff
 Greenst.w. calcite and quartz seams
 Tuff
 87.0 1/2" quartz shear - 60
 Greenst.w. calcite and quartz seams
 92.5 1/2" quartz shear - 40

End of hole, core recovery 99.6%

Sample 62.7-66.3 Cr.38 (18")

Logged by E.L.Lewin

August 11th. 1962

Drilled by Norwescon Dev.Co. Red Lake

E.L.Lewin
 E.L.Lewin


CORE RECOVERED

Diamond Drill Hole Log

NUMBER 8 BEARING AT COLLAR N20 W
 DIP AT COLLAR 55

LOCATION Cree Lake, Swayze Township.
 Latitude 5' N of #3 post claim S-116847
 Departure 5.0 E of #3 " " S-116847
Flint Rock Mines Ltd.

SURVEY DATA		
LOCATION	BEARING	DIP
Started	Aug. 18th/62	
Completed	" 18th/62	
Depth	127'	

FROM	TO	DESCRIPTION	CORE RECOVERED
0.0	4.0	Casing	
4.0	19.0	Tuff at 7.5' 1/4" quartz stringer @ 40	
19.0	26.0	Greenstone with calcite and quartz seams	
26.0	31.5	Tuff " " " " "	
31.5	39.0	Greenstone " " " " "	
		32.0 1/4" quartz str. " specs of sulphide	
39.0	48.0	Tuff with calcite and quartz seams	
48.0	49.5	Greenst. " " " " "	
49.5	63.0	Tuff " " " " "	
63.0	70.0	Greenst. " " " " "	
		67.0 1" white quartz	
		69.5 1/2" quartz shear @ 25	
70.0	74.5	Tuff with calcite and quartz seams	
74.5	77.0	Greenst. " " " " "	
77.0	97.0	Tuff " " " " "	
		85.0 4" chlorite and quartz shear @ 25	
		86.5 3" " " " " @ 30	
97.0	97.8	Tuff and quartz, fair mineralization	
97.8	127.0	Tuff with calcite and quartz seams	
End of hole, core recovery 99.7%			
Sample 96.9-97.9 Cr.39 (12")			
Logged by <u>A.M. Lewin</u>		August 18th. 1962	
Drilled by <u>Norwescon Dev. Co. Red Lake</u>		 A.M. Lewin	

Diamond Drill Hole Log

NUMBER 9 BEARING AT COLLAR S 23 W Started Oct. 4th. 1962
 Completed " 7th. 1962
 DIP AT COLLAR 50 Depth. 167'

LOCATION Cree Lake, Swayze Township
 Latitude 235'N of # 3 post of claim S-116847
 Departure 682' E " 3 " " " "

SURVEY DATA		
LOCATION	BEARING	DIP

FLINT ROCK MINES LTD.

FROM	TO
0.0	10.0
10.0	16.0
16.0	42.0
42.0	42.5
42.5	66.0
66.0	69.0
69.0	72.0
72.0	85.0
85.0	96.0
96.0	97.5
97.5	111.0
111.0	112.5
112.5	118.3
118.3	119.5
119.5	132.5
132.5	134.5
134.5	146.0
146.0	146.5
146.5	167.0

DESCRIPTION
 Casing
 Greenstone
 at 14.5-15.5 leaching with vugs
 Greenst.w.calc.and quartz seams
 19.8 1/4" quartz str.w.sulphide @ 45
 34.0 cherty
 1/4" quartz str.well min. @ 10
 Greenst. w. calc.and quartz seams
 44.5-44.8 quartz splashes
 45.2-47.2 1/4" quartz str.w.sulphide @ 10
 Greenst.
 Cherty
 Greenst.w.calc.and quartz seams
 83.0-84.0 sheared @ 60
 Greenst.w.chlorite and calc.& quartz seams
 93.0 1/4" quartz str.w.sulphide @ 15
 quartz stringers and specs of sulphide
 Greenst.w.chlorite and calc.& quartz seams
 Greenst.w.chlorite and quartz splashes
 Greenst.w.chlorite
 1/4" quartz str. w. sulphide @ 15
 Greenst.w.calc.and quartz seams
 Greenst.leached and brecciated
 Greenst.w.calc.and quartz seams
 Chlorite and quartz shear @ 45
 Greenst.w.calc.and quartz seams

CORE RECOVERED

End of hole, core recovery 99.7 %

Sample 42.0-43.0 Cr.83 (12")
 Sample 45.0-47.5 Cr.84 (30")

Drilled by NORWESCON DEV.CO.Red Lake, Ont.

Logged by E.M.Lewin

October 13th. 1962

E.M. Lewin
 E.M.Lewin

Diamond Drill Hole Log

SURVEY DATA

NUMBER 3 10 BEARING AT COLLAR S 23 W
 DIP AT COLLAR 50

Started Oct. 9th, 1962
 Completed " 12th, 1962
 Depth 124'

LOCATION Cree Lake, Hwayze Township

Latitude 25' ~~23'~~ N of 3 post claim S 116 47
 Departure 925' ~~925'~~ E " 3 " " " "

FLINT ROCK MINES LTD.

FROM	TO
0.0	20.0
20.0	27.0
27.0	29.5
29.5	50.0
50.0	57.0
57.0	68.5
68.5	73.0
73.0	84.3
84.3	85.5
85.5	91.2
91.2	95.0
95.0	102.5
102.5	114.5
114.5	118.0
118.0	119.0
119.0	124.0

DESCRIPTION

Casing
 Greenst. w. calc. and quartz seams
 Porphyry
 Greenst. w. calc. and quartz seams
 Porphyry
 Cherty w. specs of sulphide
 at 33.5 1" quartz stringer @ 60
 Chert
 Greenst. w. chlorite and calc. & quartz seams
 77.0 2" white quartz
 79.5 2" chlorite shear @ 30
 White quartz
 Greenst. w. chlorite and specs of sulphide
 87.0 1" quartz @ 40
 Chert w. specs of sulphide
 93.5 quartz splash with sulphide
 Greenst. w. calcite and quartz seams
 98.0 1/4" quartz str. w. sulphide
 Porphyry
 104.0 1/4" quartz str. @ 10
 107.0 2" " " @ 35
 108.0 4" white quartz
 Greenst. w. calc. and quartz seams
 quartz and greenst. w. sulphide
 Greenst. w. calc. and quartz seams

End of hole, core recovery 99.0 %

Sample 118.0-119.0 Cr. 85 (12")

Drilled by **NORWESCON DEV. CO** Red Lake, Ont.

Logged by **E.M. Lewin**

October 19th, 1962

E.M. Lewin
 E.M. Lewin

CORE RECOVERED

Diamond Drill Hole Log

NUMBER 11 BEARING AT COLLAR N 20 E
 DIP AT COLLAR 45

Started Oct. 14th. 1962
 Completed Oct. 17th. 1962
 Depth 115'

LOCATION Green Lake, Swayze Township
 Latitude 130' N of # 3 post claim S-116847
 Departure 965' E " 3 " " "

SURVEY DATA		
LOCATION	BEARING	DIP

FLINT ROCK MINES LTD.

FROM	TO
0.0	45.0
45.0	51.0
51.0	52.0
52.0	55.0
55.0	57.5
57.5	65.0
65.0	68.0
68.0	72.0
72.0	77.0
77.0	80.0
80.0	82.0
82.0	82.4
82.4	84.0
84.0	85.2
85.2	87.0
87.0	88.3
88.3	89.8
89.8	90.4
90.4	99.0
99.0	115.0

	DESCRIPTION	CORE RECOVERED
	Casing	
	Greenst.w.calc.and quartz seams	
	" leached,with vugs	
	Water seam no core	
	Greenst. leached,with vugs	
	" w.calc and quartz seams	
	" ,w. cubes of pyrite	
	" w. calc.and quartz seams	
	" w. chlorite and calc.& quartz seams	
	" w.chl.,and calc.& quartz seams w.sulphide	
	" w. calc.and quartz seams	
	White quartz	
	Greenst.w.calc.and quartz seams	
	Chlorite and white quartz	
	Greenst.	
	Chlorite and white quartz	
	Greenst.w.calc.and quartz seams	
	Chlorite and white quartz	
	Porphyry	
	Greenst.w.calc.and quartz seams	

End of hole.core recovery 95.5 %

Sample 77.0-80.0 Cr.86 (36")

Drilled
 Logged by NORWESCON DEV.CO.Red Lake,Ont.

Logged by E.M.Lewin

E.M. Lewin
 October 19th 1962

Diamond Drill Hole Log

NUMBER 12 BEARING AT COLLAR N 20 E
 DIP AT COLLAR 60

LOCATION Cree Lake, Swayze Township

Latitude 23'S of # 3 post claim S-116847
 Departure 695'E " 3 " " "

SURVEY DATA

LOCATION	BEARING	DIP
Started	Oct. 18th. 1962	
Completed	Oct. 24th. 1962	
Depth	379'	

FLINT ROCK MINES LTD.

FROM	TO
0.0	6.0
6.0	44.0
44.0	44.5
44.5	80.0
80.0	92.5
92.5	93.5
93.5	94.0
94.0	98.5
98.5	99.0
99.0	108.0
108.0	108.6
108.6	118.5
118.5	136.0
136.0	150.0
150.0	231.0
231.0	231.5
231.5	270.0
270.0	311.0
311.0	324.0
324.0	333.0
333.0	368.0
368.0	371.0
371.0	379.0

	DESCRIPTION
Casing	
Greenst. w. calcite and quartz seams	
at 25.0	1" quartz stringer @ 50
26.0	1" " " @ 60
28.0	2" " " @ 60
34.0	6" with Qtz.strs. and cubes of pyrite
44.0	quartz and chlorite shear @ 60
44.5	Greenst. w. calc. and quartz seams
54.0	2" chlorite and quartz shear @ 60
80.0	Impure quartzite
92.5	Greenst. w. calcite and quartz seams
93.5	quartz and greenst.
94.0	Greenst. w. calcite and quartz seams
98.5	quartz and greenst.
99.0	Greenst. w. calcite and quartz seams
108.0	102.5 1/2" quartz stringer @ 25
	quartz and greenst. w. specs of sulphide
108.6	Greenst. w. calcite and quartz seams
118.5	Greenst. w. chlorite and calc. & quartz seams
136.0	Tuff w. calc. and quartz seams
150.0	Tuff w. chlorite and calc. & quartz seams
159.5	1/4" quartz stringer @ 30, faulted 1/4"
231.0	quartz and greenst.
231.5	Tuff w. chlorite and calc. & quartz seams
270.0	Greenst. w. calc. and quartz seams
298.5-299.5	quartz and specs of sulphide
311.0	Tuff
324.0	Greenst. w. calcite and quartz seams
333.0	Greenst. w. chlorite and calc. & quartz seams
368.0	Tuff
371.0	Greenst. w. chlorite and calc. & quartz seams

CORE RECOVERY

End of hole, core recovery 99.5 %

Sample 298.5-299.5 Cr. 87 (12")

Drilled by Norwescon Drilling Co. Red Lake, Ont.

Logged by E.M. Lewin

*Hole collared on S-117115
 first 60' tube credited to
 S-116850 et al group.*

October 26th. 1962

E.M. Lewin
 E.M. Lewin

Diamond Drill Hole Log

NUMBER 13 BEARING AT COLLAR N 20 E

DIP AT COLLAR 60

LOCATION Cree Lake, Swayze Township

Latitude 18'N of #3 post of claim S-116847
 Departure 630'E " 3 " " " "

SURVEY DATA

LOCATION	BEARING	DIP
Started	Oct. 25th. 1962	
Completed	Oct. 27th. 1962	
Depth	173'	

FLINT ROCK MINES LTD.

DESCRIPTION

FROM	TO
0.0	8.0
8.0	34.0
34.0	35.5
35.5	40.5
40.5	41.5
41.5	57.5
57.5	59.5
59.5	66.0
66.0	67.0
67.0	93.5
93.5	94.5
94.5	119.5
119.5	121.0
121.0	122.7
122.7	123.5
123.5	129.0
129.0	133.0
133.0	133.5
133.5	141.0
141.0	143.0
143.0	149.5
149.5	156.0
156.0	160.0
160.0	173.0

Casing
 Greenst.w.calcite and quartz seams
 at 9.5 1" quartz @ 70
 Greenst., mineralized
 35.7 1" quartz str. @ 60, w. sulphide
 Greenst.w.calcite and quartz seams
 Greenst.w.chlorite and 1/2" quartz str. @ 45
 Greenst.w.calcite and quartz seams
 Greenst.w.quartz seams and specs of sulphide
 Greenst.w.calcite and quartz seams
 Greenst.w.chlorite and quartz splashes
 Greenst.w.calcite and quartz seams
 Greenst.w. chlorite, and quartz with sulphide
 Greenst.w.calcite and quartz seams
 95.0 2" chlorite and quartz @ 60
 101.5 2" quartz and chlorite @ 45
 Greenst.w.chlorite, sheared @ 45
 Greenst.w.Chlorite and calc.& quartz seams
 quartz and chlorite, with specs of sulphide
 Greenst.w.chlorite and calc.& quartz seams
 124.5 4" sheared @ 60
 126.0 3" chl.& quartz, w.specs of sulphide
 Greenst.w.calcite and quartz seams
 Brecciated
 Greenst.w.chlorite and calc.& quartz seams
 Greenst.w.chlorite, brecciated and mineralized
 Greenst.w.calcite and quartz seams
 Greenst.w.chlorite and calc.& quartz seams
 Greenst.w.chlorite, sheared @ 45
 Greenst.w.calcite and quartz seams

End of hole, core recovery 99.5

Sample 93.5- 94.5 Cr.88(12")
 " 122.5-123.5 Cr.89(12")
 " 141.5-143.0 Cr.90(18")

Drilled by NORWESCON DEV.CO.Red Lake, Ont.

Logged by E.M.Lewin

October 27th. 1962

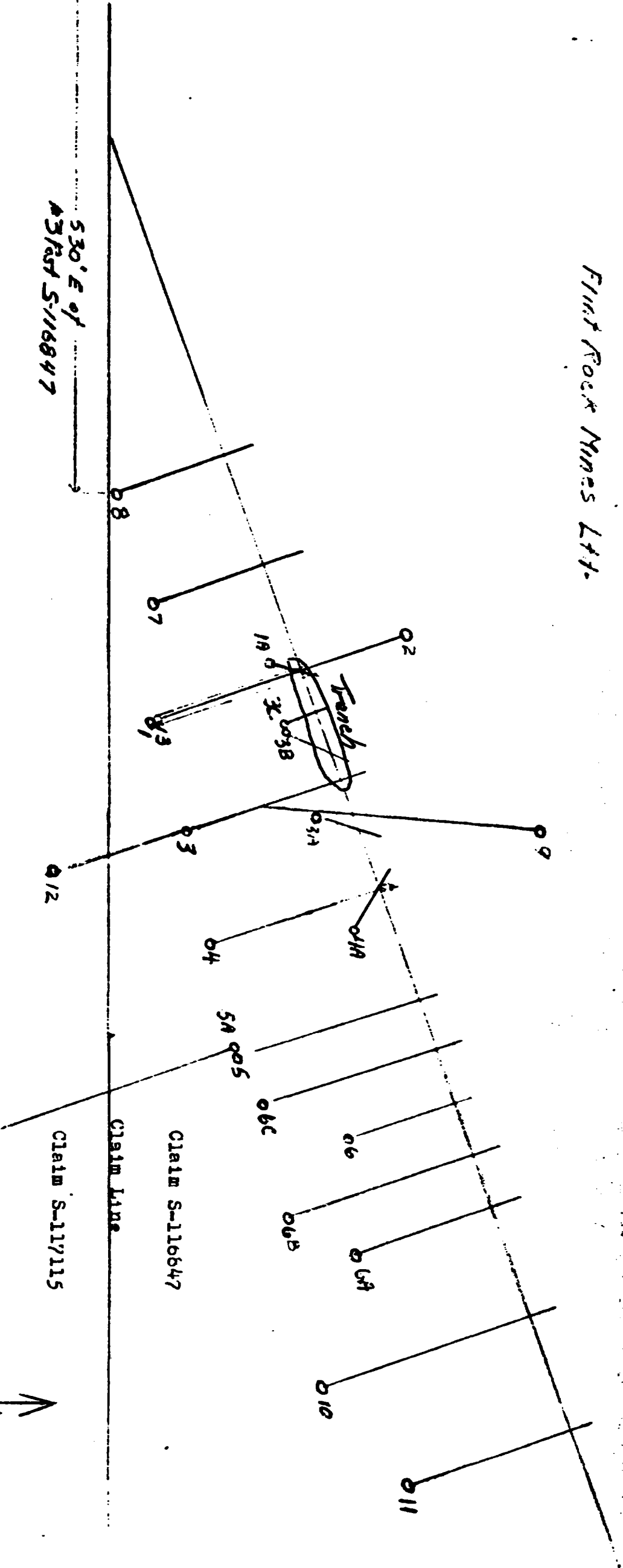
E.M. Lewin
 E.M. Lewin

CORE
 RECOV-
 ERED

Sketch of Drill Holes on S-116847

First Rock Mines Ltd.

530' E of
3rd S-116847

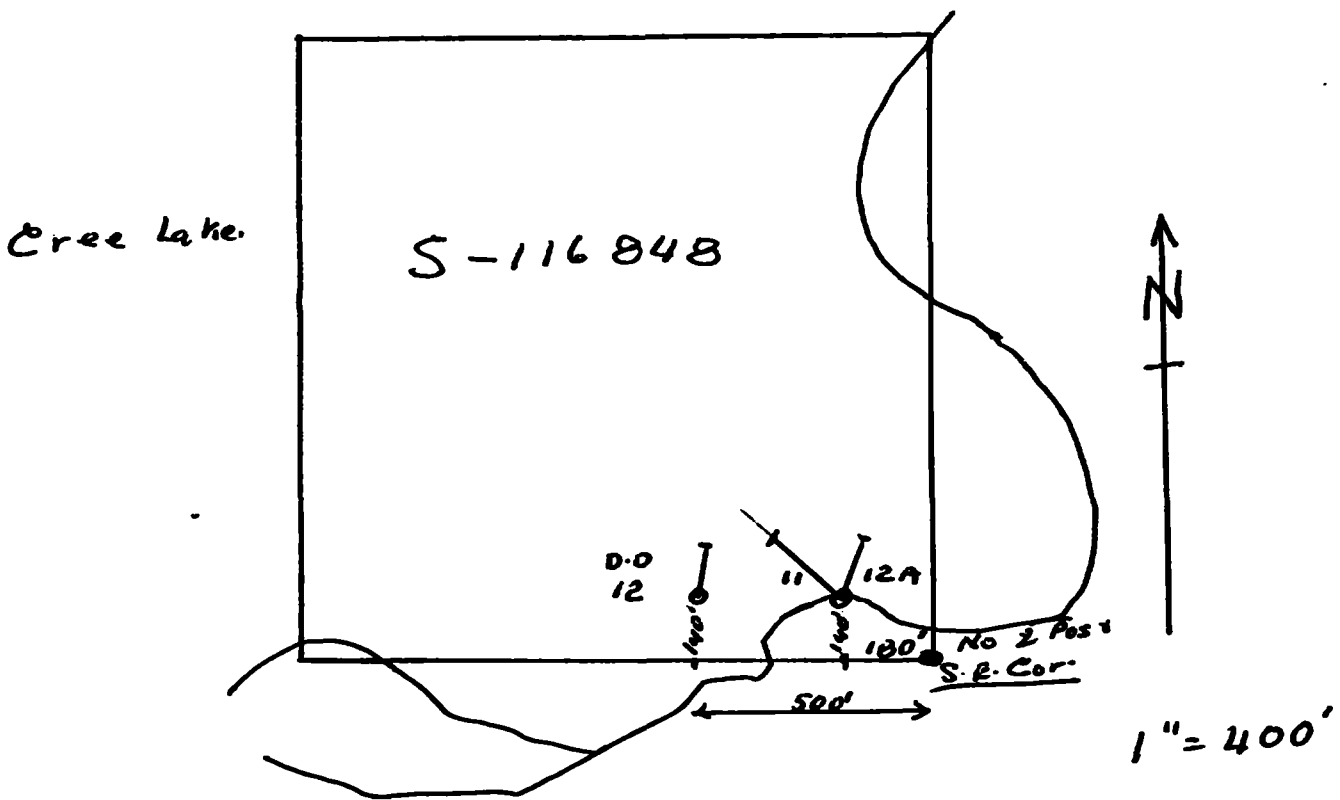


Scale 1" = 50'

SKETCH MAP SHOWING LOCATIONS OF DRILL HOLES ON CLAIM S-116847
Cape Lake Area, Swayze Township - Sudbury Mining Division

Signature





SKETCH SHOWING LOCATION OF
DRILL HOLES 11, 12, 12A.
CLAIM S-116848 - SWAYZE TWP
FLINT ROCK MINES LIMITED.

E.M.L

Diamond Drill Hole Log

SURVEY DATA		
LOCATION	BEARING	DIP

NUMBER 11 BEARING AT COLLAR N 20 E Started February 10th
 Completed February 13th
 DIP AT COLLAR 45 Depth 266.5'

LOCATION Grease Lake Claim S-116848
 Latitude 140' N of S E corner post of claim S-116848
 Departure 181' W S-116848

FROM	TO	DESCRIPTION	CORE RECOVERED
0.0	5.5	Casing	
5.5	8.5	Tuff	
8.5	10.0	Tuff, leached w. vugs	
10.0	16.5	Tuff w. calc. and quartz seams	
16.5	21.0	Feldspar porphyry	
21.0	73.0	Tuff w. calc. and quartz seams	
73.0	76.0	Tuff w. quartz stringers and some sulphides	
76.0	99.5	Tuff w. calc. and quartz seams	
99.5	100.0	Tuff w. quartz	
100.0	101.0	Tuff w. calc. and quartz seams	
101.0	122.0	Feldspar porphyry	
122.0	148.5	Tuff w. calc. and quartz seams	
148.5	151.0	Tuff, leached w vugs	
151.0	153.0	Lost core	
153.0	162.5	Tuff, leached w vugs	
162.5	163.5	Tuff w. some quartz and sulphides	
163.5	180.0	Greenstone sheared	
180.0	186.5	Greenstone, leached w. vugs	
186.5	203.0	Greenstone, sheared	
203.0	204.0	Lost core	
204.0	249.0	Tuff w. calc. and quartz seams	
249.0	266.5	Tuff	

End of hole, core recovery 98.5 %

Sample 73.0-76.0 Cr. 93 (36")
 Sample 162.5-163.5 Cr. 94 (12")

Logged by E.M. Lewin

February 22nd. 1963

E.M. Lewin
 E.M. Lewin

Diamond Drill Hole Log

NUMBER 12 BEARING AT COLLAR N 10 E Started Feb/27th. 1963
 DIP AT COLLAR 45° Completed Feb/8th. 1963
 Depth 135'

LOCATION On the ice, Cree Lake Claim S-116848
 Latitude 140' N of S E corner post Claim S-116848
 Departure 500' W S E S-116848

SURVEY DATA		
LOCATION	BEARING	DIP

FROM	TO	DESCRIPTION	CORE RECOVERED
0.0	39.0	Casing	
39.0	40.5	Tuff, leached, w. vugs	
40.5	61.5	Tuff w. calc. and quartz seams	
61.5	62.0	Tuff w. specs of sulphides	
62.0	82.5	Tuff w. calc. and quartz seams	
82.5	87.0	Tuff, leached, w. vugs	
87.0	97.5	Tuff w. calc. and quartz seams	
97.5	98.0	Tuff w. specs of sulphide	
98.0	103.0	Tuff, schistose, very altered w. lots of chlorite	
103.0	105.5	Lost core	
105.5	109.0	Tuff, altered w. lots of chlorite	
109.0	119.0	Feldspar porphyry	
119.0	135.0	Tuff	
End of hole, core recovery 98%			

Logged by E.M. Lewin

February 22nd. 1963

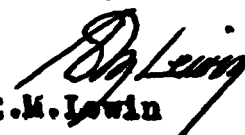
E.M. Lewin
 E.M. Lewin

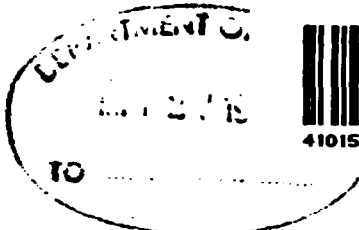
Diamond Drill Hole Log

SURVEY DATA

NUMBER 12A BEARING AT COLLAR N 50 W Started February 19th. 1963
 DIP AT COLLAR 45° Completed February 21st 1963
 Depth 182'
 LOCATION Grac Lake Claim S 116848
 Latitude 40' N of S E corner Claim S-116848
 Departure 180' W of S E " " S-116848

LOCATION	BEARING	DIP

FROM	TO	DESCRIPTION	CORE RECOVERY
0.0	6.0	Casing	
6.0	71.5	Tuff w. calc. and quartz seams	
		at 25.0 $\frac{1}{2}$ " quartz stringer	660
		42.5 $\frac{1}{2}$ " quartz stringer	645
		58.5 $\frac{1}{2}$ " quartz stringer	650
71.5	72.0	quartz stringers	660
72.0	87.0	Tuff w. calc. and quartz seams	
87.0	90.0	Tuff with some quartz and sulphides	
90.0	95.0	Tuff w. calc. and quartz seams	
95.0	105.0	Feldspar porphyry	
105.0	139.0	Tuff w. calc. and quartz seams	
		127.5 1" quartz stringer	680
		132.0 $\frac{1}{2}$ " quartz stringer	660
139.0	140.0	Sheared w. quartz stringers	
140.0	153.0	Tuff w. calc. and quartz seams	
153.0	154.0	Tuff w. specs of sulphides	
154.0	157.0	Tuff w. calc. and quartz seams	
157.0	160.0	Tuff w. some quartz and sulphides	
160.0	181.0	Tuff w. calc. and quartz seams	
End of hole, core recovery 99.8 %			
Sample 87.0-90.0 Cr. 95 (36")			
Sample 157.0-160.0 Cr. 96 (36")			
Logged by E.M. Lewin		February 22nd. 1963	
		 E.M. Lewin	



900

Form 12 A
2004-00-2134

Attach sketch showing location of work in relation to corner posts, and nature and extent thereof.

W6206-16A77

THE MINING ACT



REPORT OF WORK

Swayze Inc

Sudbury

To the Recorder of Mining Division:

FLINT ROCK MINES LTD.

I,

SUIT. 1212-55 York Street, Toronto, Ontario

(Name of Applicant)
(Post Office Address)

the recorded holder of mining claim No. **S-116847** hereby report the performance of **.160.** days' work not before reported, to be applied to this claim.

This mining claim is one of a group of contiguous claims numbered **S-116847, 116848, 116849, 116919, 116920, 116921, 116923, 116924, 116925, 117914, 117915, 117916, 117917, 117918, 117919, 117920, 117921, 117923**

of which I am the recorded holder under Mining License No. **A-34956** and the work

was performed on mining claim (s) **116847** and is to be applied

in respect of mining claim (s)
(Complete above section only if applicable)

The work is as follows:

Stripping or opening up mines, sinking shafts or other actual mining operations.

The names and addresses of the men who performed the work and the dates upon which each man worked in its performances are: (If more space is required, attach list).

.....
.....
.....

Diamond or other Core Drilling Total No. of days

2563

Footage drilled **15716'** No. of holes drilled **22** Angle **45 to 60**

Diameter of core Names and addresses of owner and operator of drill **NORWESCON DEV. CO. Red Lake, Ont.**

Dates upon which drilling was done **July 15th. - October 27th. 1962**
(Core log and Sketch in duplicate by core examiner accompanies this Report.)

Total No. of days **2437**

Work by Compressed Air or other Power Driven Rock Drill or Mechanical Equipment.

Type of drill **Pioneer Plugger**

Names and addresses of men engaged in operating drill, **Sam Duggan, Box 769, Red Lake, Ont.**
William Close, " " "

Dates upon which each man worked **August 18th. - 24th. 1962 (incl.) 38**

Total No. of days

The penalty for making a false statement in this certificate is \$500. or six months imprisonment or both.

W 6206-16878

IMPORTANT

Attach sketch showing location of work in relation to corner posts, and nature and extent thereof.

Form 12 A
20M-60-2134

THE MINING ACT



ONTARIO

REPORT OF WORK

To the Recorder of Sudbury Mining Division:

I, FLINT ROCK MINES LTD.
(Name of Applicant)
SUITE L212-55 York Street, Toronto, Ontario
(Post Office Address)

the recorded holder of mining claim No. S-116848 hereby report the performance of 160 days' work not before reported, to be applied to this claim.

*This mining claim is one of a group of contiguous claims numbered S-116847, 116848, 116849, S-116919, 116920, 116921, 116923, 116924, 116925, 117914, 117915, 117916, 117917, 117918, 117919, 117920, 117921, 117922

of which I am the recorded holder under Mining License No. A-34756 and the work was performed on mining claim (s) 116847 and is to be applied

in respect of mining claim (s) S-116848 (*Complete above section only if applicable)

The work is as follows:

Stripping or opening up mines, sinking shafts or other actual mining operations.

The names and addresses of the men who performed the work and the dates upon which each man worked in its performances are: (If more space is required, attach list).

.....
.....
.....
.....

Diamond or other Core Drilling Total No. of days

Footage drilled 2563 No. of holes drilled 22 Angle 45 to 60
Diameter of core 15/16" Names and addresses of owner and operator of
drill NORWESCON DEV. CO. Red Lake, Ont.

Dates upon which drilling was done July 15th.-October 27th. 1962
(Core log and Sketch in duplicate by core examiner accompanies this Report.)

Total No. of days 2437
Work by Compressed Air or other Power Driven Rock Drill or Mechanical Equipment.

Type of drill Pioneer plugger
Names and addresses of men engaged in operating drill Sam Duggan, Box 769 Red Lake, Ont.
William Close, " " "

Dates upon which each man worked August 18th.-24th. 1962. (incl.) 38
Total No. of days

The penalty for making a false statement in this certificate is \$500. or six months imprisonment or both.