



41015SW0123 15 GREENLAW

010

### Diamond Drilling

Township of GREENLAW

Report No 15

Work performed by: Granges Exploration

Claim No	Hole No	Footage	Date	Note
P 476787	SW-21	474.0'	Mar/77	(1)
P 498910	SW-26	213.0'	Mar/77	(1)
P 476788	SW-24	361.8'	Mar/77	(1)

1048.8

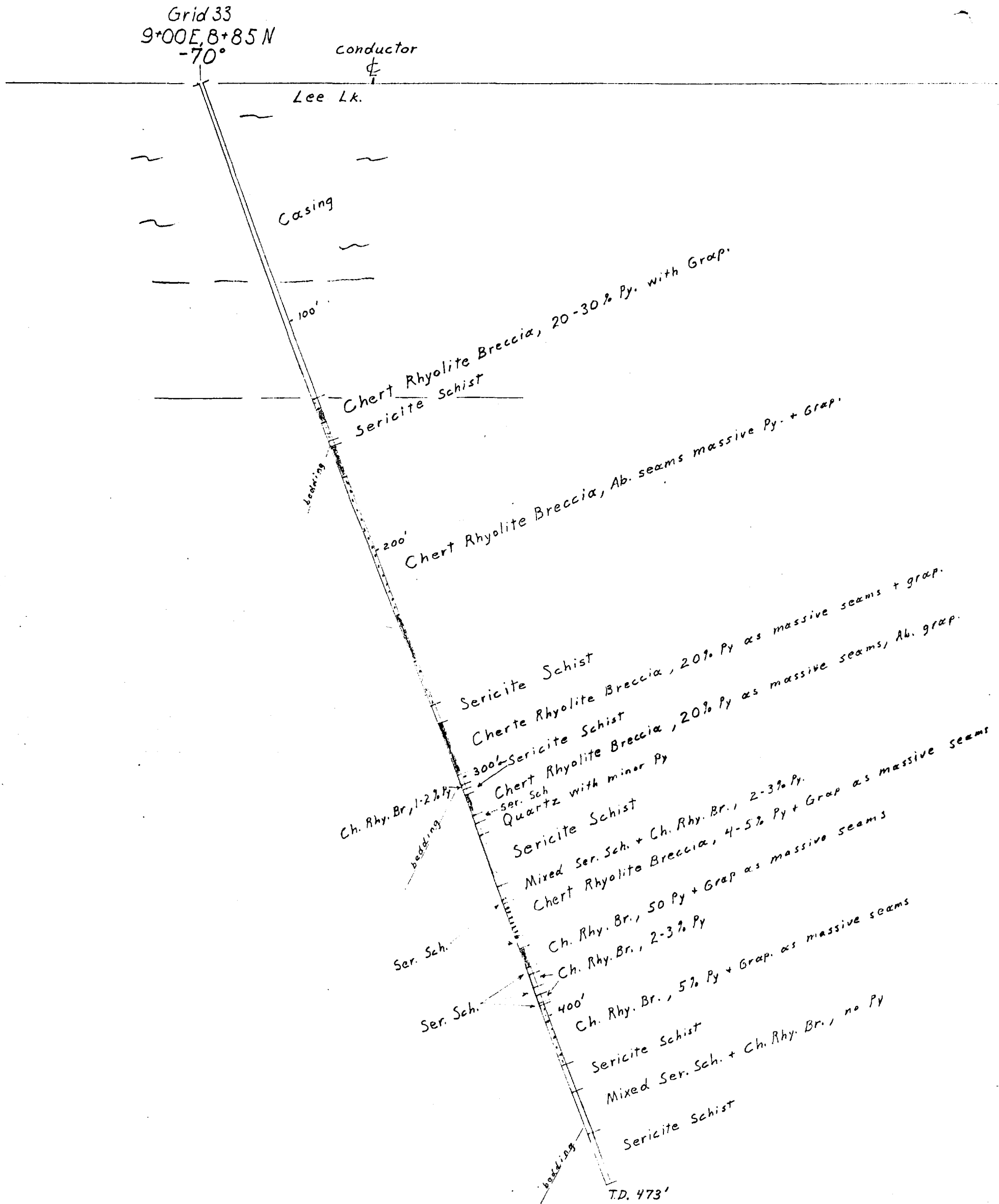
### Notes:

(1) #97-77

FOOTAGE	DESCRIPTION	ALTERATION				% RECY CALC'D.
		FROM	TO			
0-128'	Casing, Lee LK 78' deep					
128'-151.5'	Chert rhyolite breccia, 20-30% py with graphite, highly silicious	137.	143.5	massive seams of py	with graphite	
151.5'-154'	sericite schist, bedding 40° to core axis	154.5	168	"	"	
154'-269'	chert rhyolite breccia, py varies from 1% in barren silicious sections to + 80% in massive seams, ab. graphite	222.5	249	"	"	
269'-277'	sericite schist	242	253	cp in minor amt's	visible through out	
277'-298.6'	chert rhyolite breccia, highly silicious, with small bands of sericite schist.					
298.6'-303'	massive seams of + 80% py with graph. py in section approx 20%					
303'-304.7'	Sericite schist, bedding 50° to core axis.			Mineralization:		
304.7'-306.9'	chert rhyolite breccia, highly sil., 1-2% py			All chert rhyolite breccia down to 421.4'		
306.9'-312.5'	sericite schist			All mineralized sections contain tr. ep.		
312.5'-314'	chert rhy. breccia, highly sil., 20% py mainly in massive seams of + 80% py, ab. graph.					
314'-324'	sericite sch.					
324'-345'	Quartz with minor py Ser. sch., sil. bands with minor py at end of section					
345'-350.5'	Ch. rhy. br. with bands ser. sch., 2-3% py					
350.5'-352'	Ser. sch.					
352'-367'	ch. rhy. br. 4-5% py mainly in bands with graph.					
367'-371'	Ser. sch.					
371'-379.2'	Ch. rhy. br. with massive bands of py 50% py	273	275	90% py		
379.2'-381.7'	Ser. sch.					
381.7'-387.5'	Ch. rhy. br., silicious, 3% py					
387.5'-390.4'	Ser. sch.					
390.4'-394'	ch. rhy. br., silicious, 2% py					
394'-395.2'	Ser. sch.					
395.2'-421.4'	ch. rhy. br. + 5% py with graphite					
421.4'-422.5'	Ser. sch.	401	402	50% py		
422.5'-443.5'	mixed ch. rhy. br. and ser. sch.					
443.5'-444'	Ser. sch., bedding 50° to core axis					
444'-451.1'	ch. rhy. br.					
451.1'-474'	Ser. sch., light yellowish-green colored					

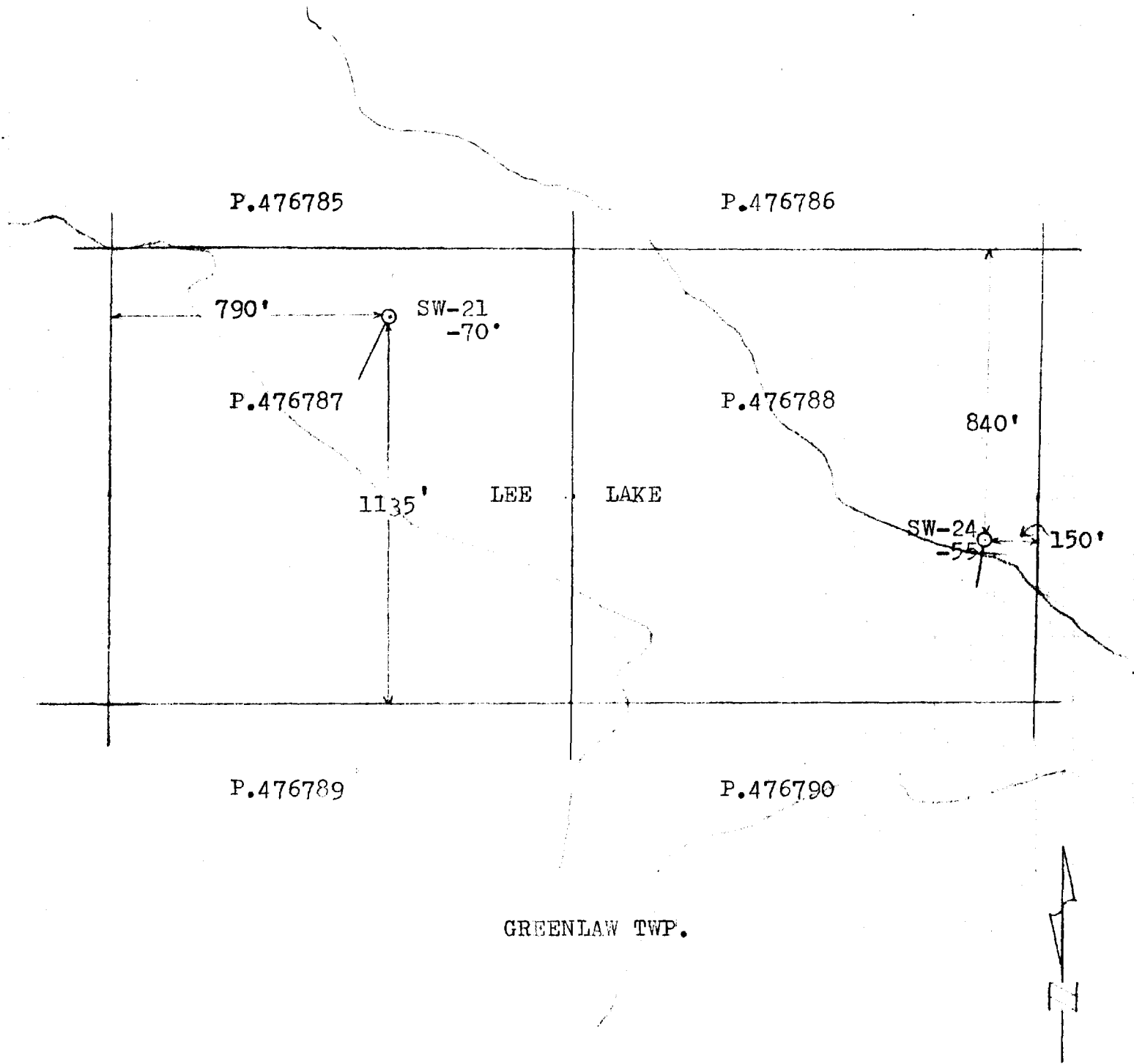
Note: SW 21 stopped due to thawing of ice on lead

# Cross-Section: SW21



Granges Exploration Ab  
Swayze Joint Venture  
Greenlaw Twp, Ontario  
Looking Grid East  
1" = 40'  
16/3/77 HHS

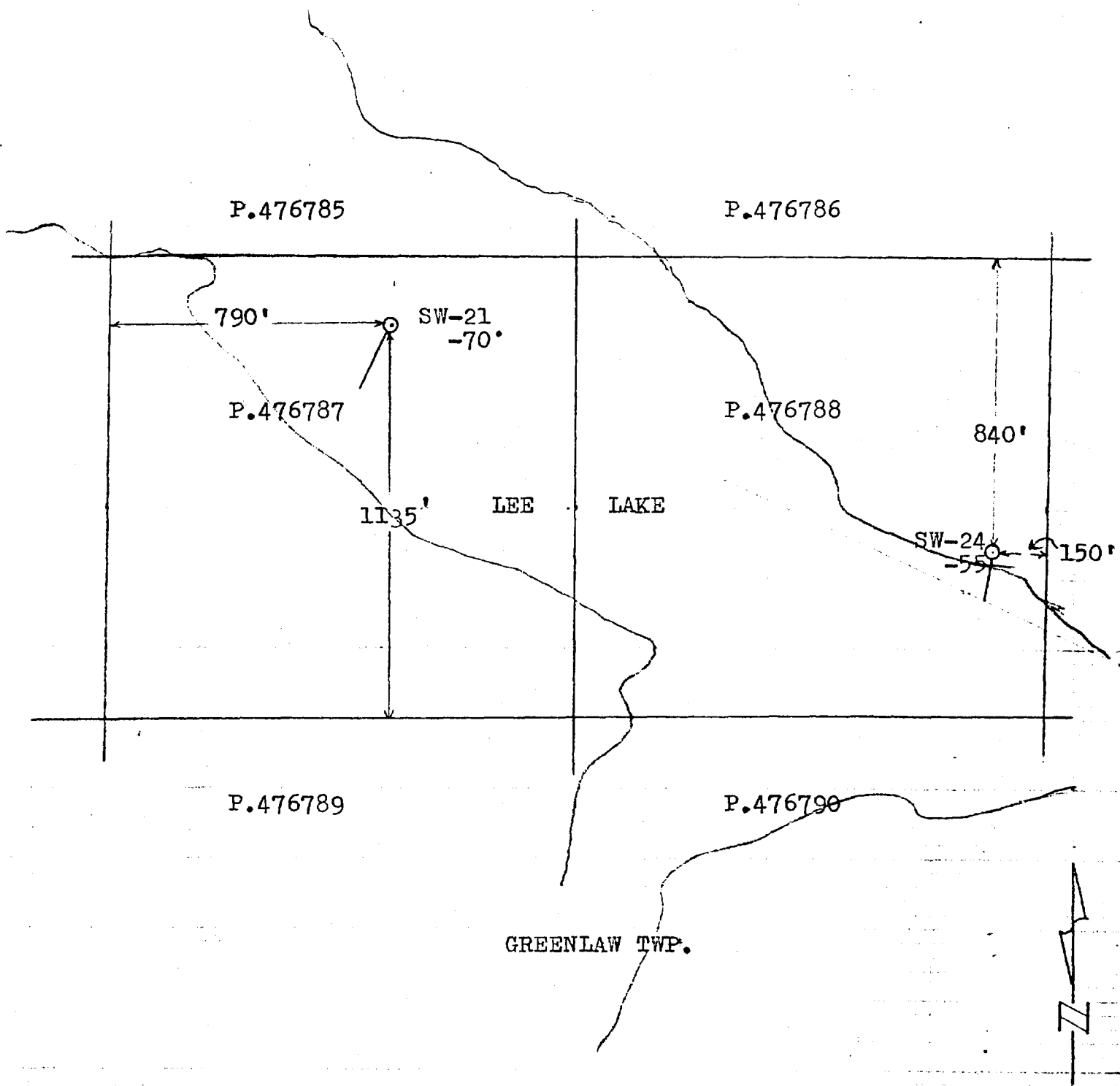
LOCATION SKETCH  
HOLES SW-21&24  
SCALE 1"= 400'



LOCATION SKETCH

HOLES SW-21&24

SCALE 1"= 400'





**GRANGES EXPLORATION AB**  
CANADIAN DIVISION  
**DIAMOND DRILL LOG**

Property *Swayze Joint Venture* Project No. *70504* Depth *2.13'* Date Began *March 18, 1977*  
 Hole No. *SW 26* Co. ord. *21+00 W* Horizontal Length *106.5'* Date Completed *March 19, 1977*  
 Sheet No. *1* Direction *Grid South* Drilled By *Bradley Bros.*  
 Claim No. *Grid 33* Elevation *60°* Logged By *H. Shear*

FOOTAGE	DESCRIPTION	ALTERATION				% RECY CALCD
		FROM	TO			
0-8'	Casing					
8'-111'	Coarse grained andesitic tuff, ab. fragments up to 3 mm, ab. chly, cal. veinlets present, moderately magnetic, dark green, ab. open fractured, no lamination.					
111'-124.5'	Calcareous dolomite tuff, bedding 50-65° to core axis.					
124.5-127	quartz rich breccia zone, ab. chl & sil., minute py					
127-213	Variable felsic volcanic tuff, spatty chly, ser. (ser. schist) + cal. - pink silt. min. (K. schist); bedding 60° to core axis, color varies from greenish grey - light grey - pinkish tan.					
	No significant mineralization					

Cross-Section: SW26

Grid 33  
21+00W, 2+10N

-60°

Casing

conductor

⊕

Andesitic Tuff

100'

Calcareous Dacite Tuff  
Silicious Breccia

Variable Felsic Volcanic Tuff

T.D. 213'

No significant mineralization

Granges Exploration Ab.  
Swayze Joint Venture  
Greenlaw Twp, Ontario

Looking Grid East

1" = 40', 20/3/77, H.H.S.

LOCATION SKETCH

HOLE SW-26

SCALE 1"= 400'

P.498911

P.498910

P.476784

300' SW-26  
300' -60°

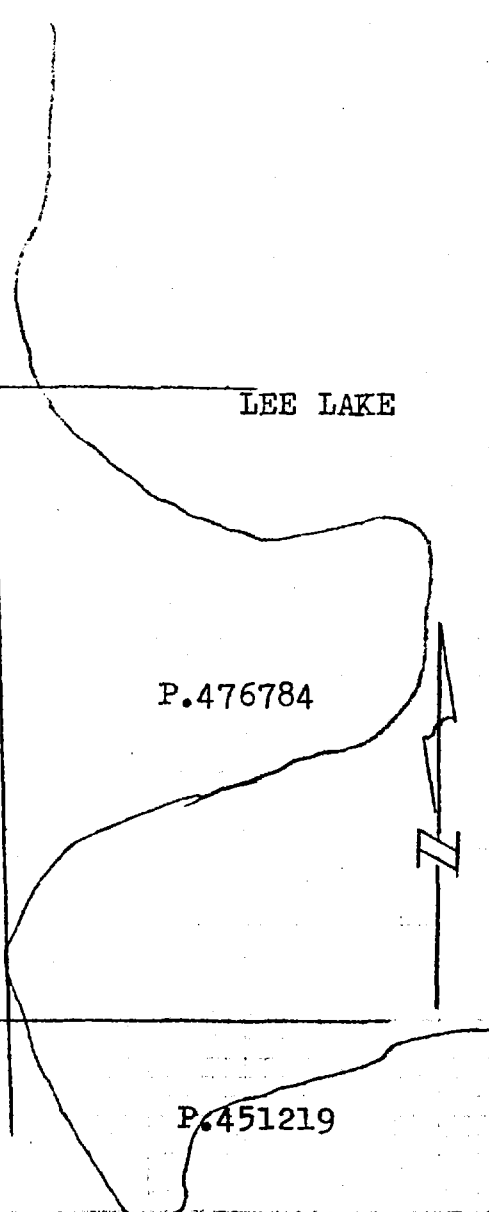
P.450864

P.451218

P.451219

LEE LAKE

GREENLAW TWP.







**GRANGES EXPLORATION AB**  
CANADIAN DIVISION  
**DIAMOND DRILL LOG**

Property: ...  
Hole No.: **SN-2A**  
Sheet No.: **1 of 2**  
Claim No.: **P-476788**  
Date Completed: **March 17, 1977**  
Drilled By: **Bradley Bros**  
Logged By: **D. T. ...**

Project No.: ...  
Co. ord.: **26165E**  
Direction: **S-15°E (grid)**  
Elevation: **Grid: 33**  
Angle: **-55°**  
Depth: ...  
Horizontal Length: **216'**

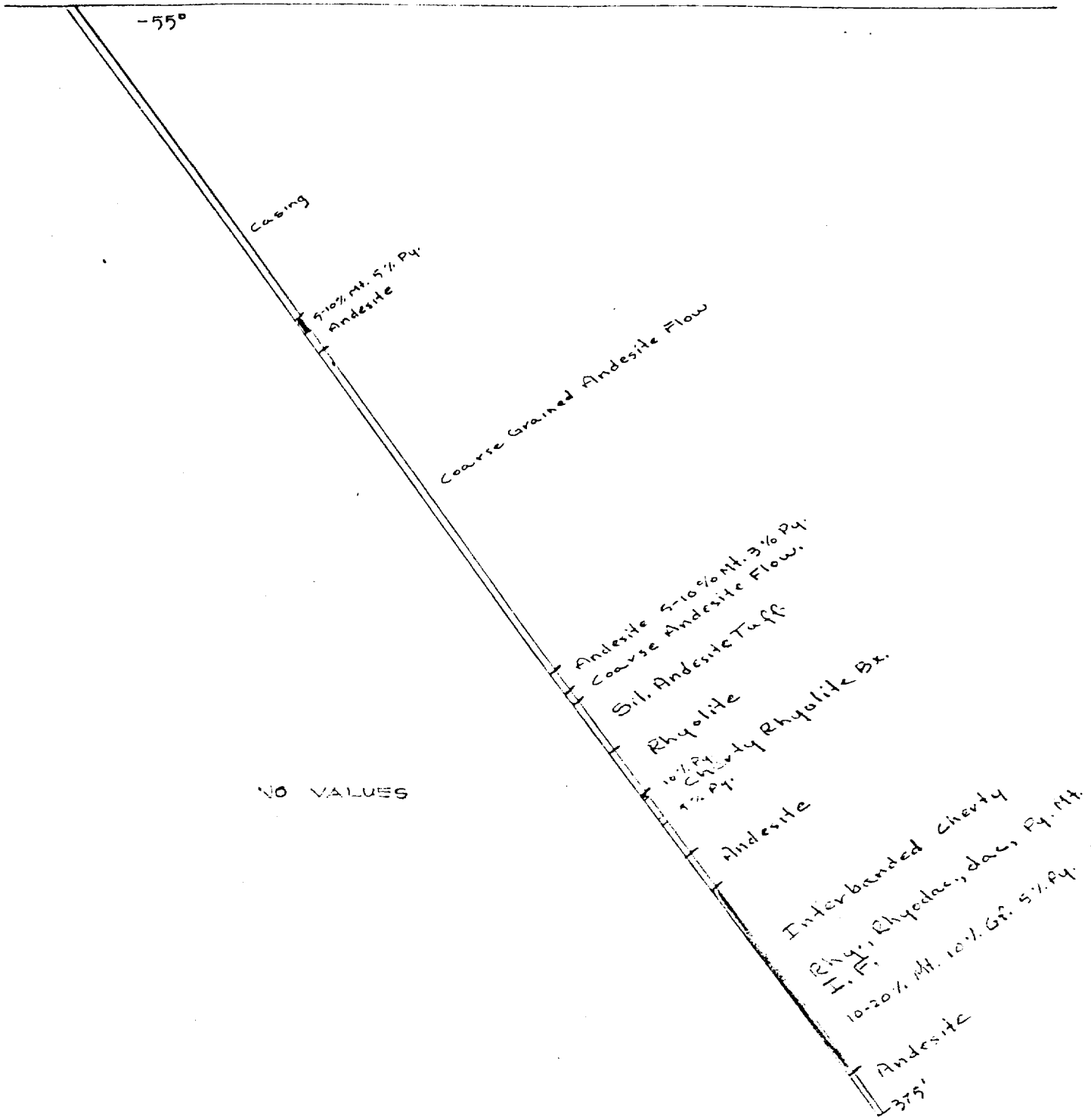
FOOTAGE	DESCRIPTION	ALTERATION		% REC'Y CALC'D.
		FROM	TO	
0.0-104.0	Casing			
104.0-116.0	Andesite? green, grey + fine grained, chloritic with 10% bands of solid magnetite up to 20mm at 30-40° core axis some narrow bands of pyrite from 104.0-105.0			
116.0-225.0	Coarse Grained Andesite flow? black, grey, sections near footwall contact porphyritic, mildly talcose, chloritic			
225.0-232.5	Andesite? as 104.0-116.0			
232.5-235.0	Coarse Andesite flow? as 116.0-225.0			
235.0-252.7	Silicified Andesite Tuff? grey, green, weakly chloritic, sericitic			
252.7-266.5	Rhyolite? olive green, very cherty, sericitic weakly fragmented with fragments to 50 mm			
266.5-286.0	Cherty Rhyolite Breccia? moderate, grey black, siliceous, brecciation weakly graphitic matrix, 270.0-273.5-285.252.7-266.5			
286.0-298.0	Andesite? black, medium to fine grained numerous criss cross veins of quartz-carbonate			
298.0-300.0	Interbanded Cherty-Rhyolite, Rhyolite, Dacite, Pyrite and Magnetite? (Iron Formation?), brecciated sections with a graphitic matrix, angles average 60°			



SW-24

Grid-33  
26+65E  
9+60N

Conductor  
⊥



Granges Exploration AB  
Swayne Joint Venture  
Greenlaw Twp, Ont.  
Looking N-75°-E, 1"=40'