



41016NW0043 11 HORWOOD

010

Diamond Drilling

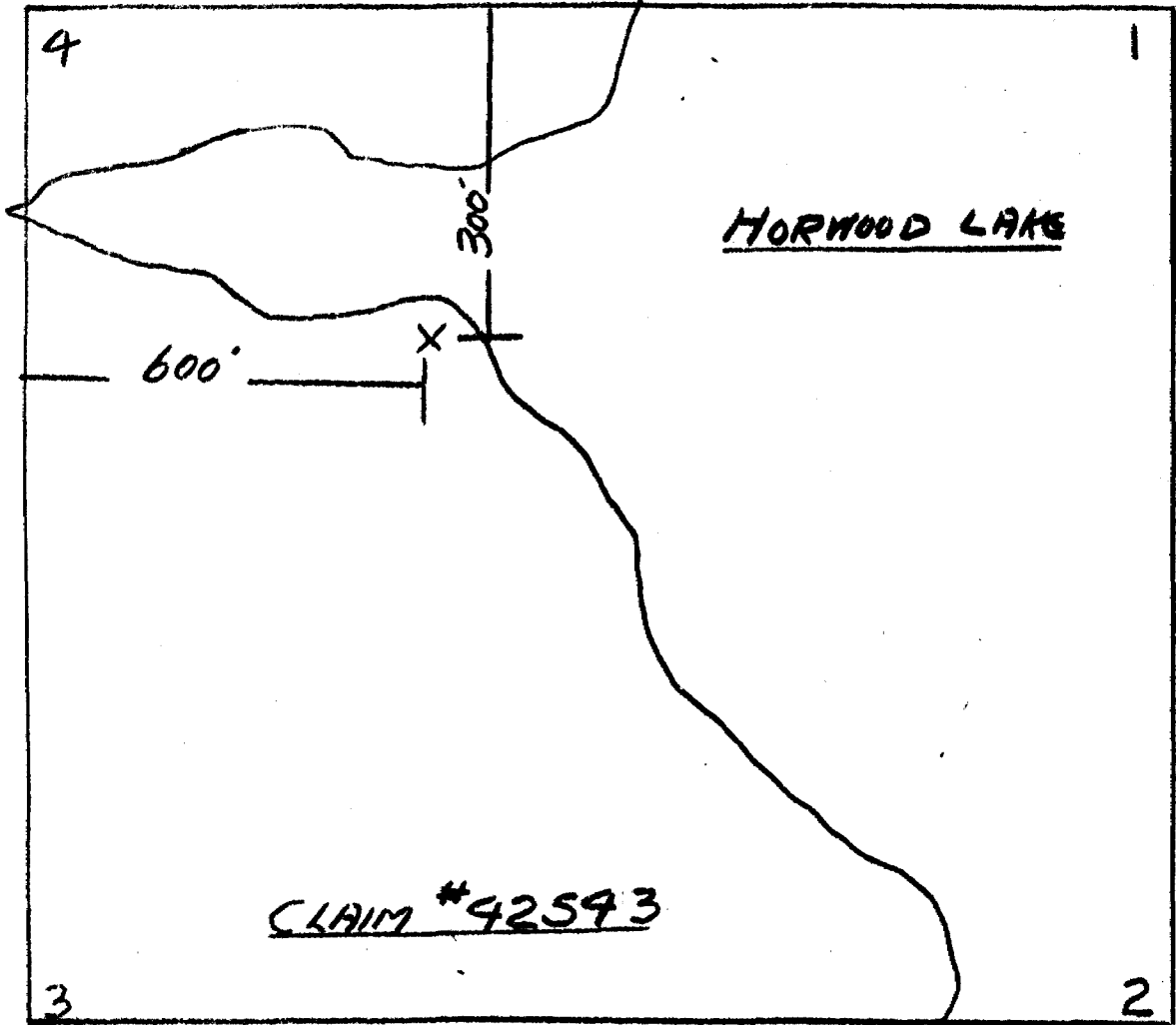
Township of Horwood

Report NO: 11

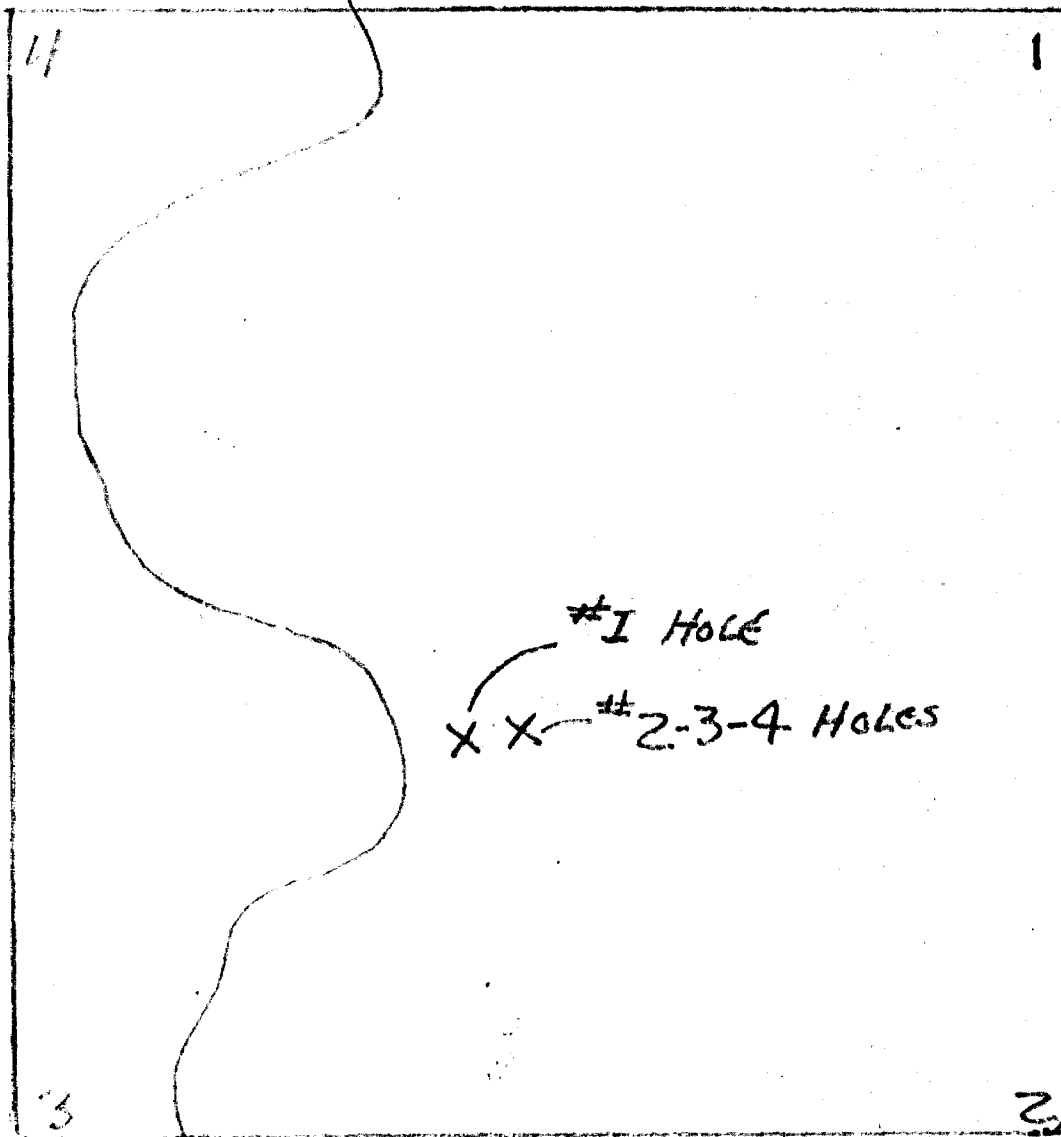
Work performed by: J. E. Fefever

Claim NO	Hole NO	Footage	Date	Note	
S 42543	1	60'	July/47		
	2	60'	July/47		
S 44952	1	90'	July/47		
	1	60'	July/48		
	2	80'	July/48		
	3	70'	July/48		
	4	70'	July/48		
	1	55'	July/49		
	2	75'	July/49		
	3	75'	July/49		
	4	75'	July/49		
	1	78'	Apr/50		
	2	78'	Apr/50		
	3	68'	Apr/50		
	4	63'	Apr/50		
	S 115380	1	101'	Sept/61	
		2	103'	Sept/61	

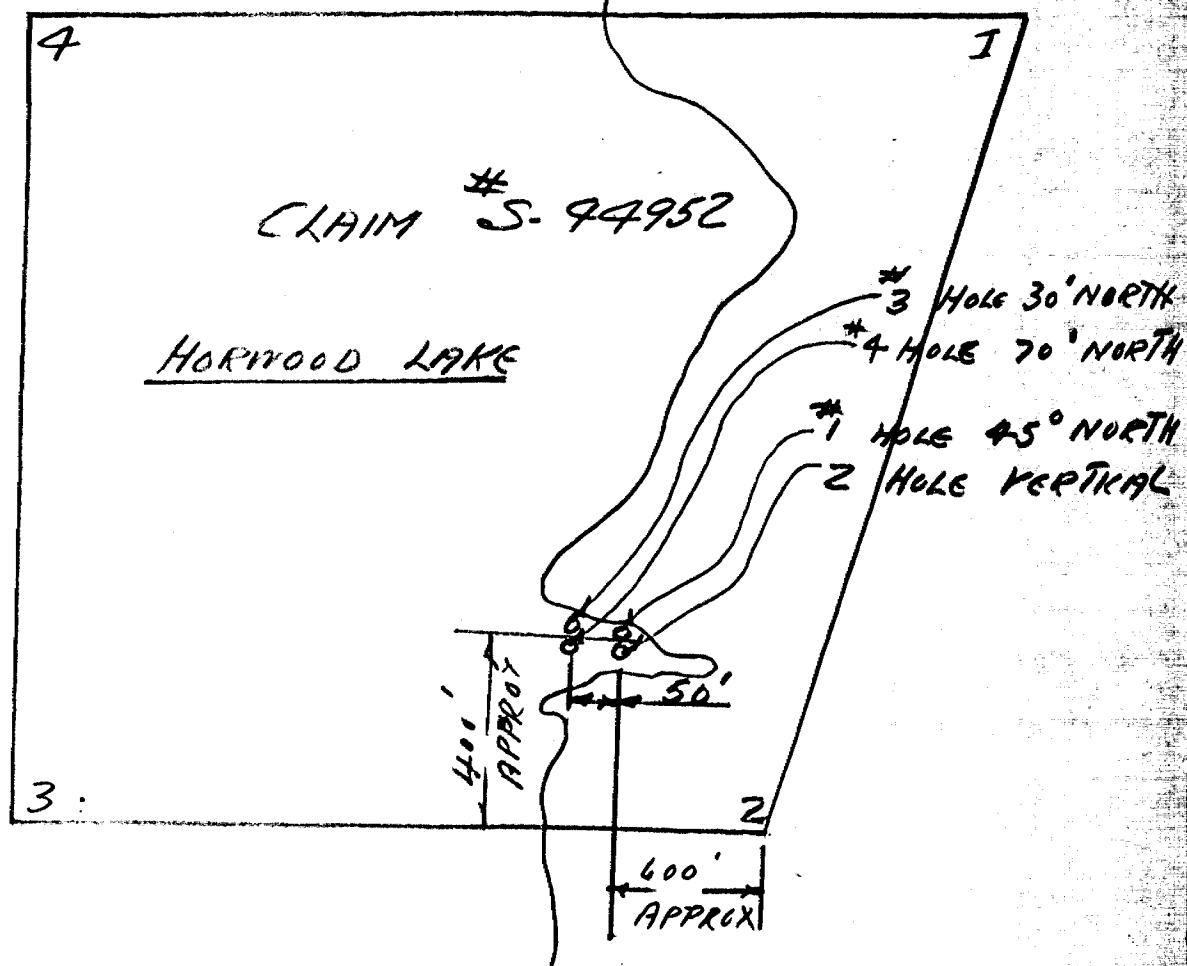
Notes:



X INDICATES WHERE WORK
WAS PERFORMED
TRENCH 4' X 53' X 4' DEPTH



DIAMOND DRILLING LOCATION ON
CLAIM # S-44-952
HOLWOOD ARK



LOCATION OF DIAMOND DRILL HOLES.

PROPERTY

HOLE NUMBER II

DIAMOND DRILL RECORD

SHEET NUMBER

SECTION FROM 0 TO 75'

LOCATION: LAT. SE CORNER
 DEP. CLAIM # 2-4-1952

STARTED JULY 20, 1949

ELEVATION OF COLLAR

COMPLETED 11, 22, 1949

DATUM

ULTIMATE DEPTH 75'

DIRECTION AT START: BEARING VERTICAL
 DIP SAME SETUP AS HOLE # I

PROPOSED DEPTH 75'

DEPTH FEET	FORMATION	SAMPLE NO.	WIDTH OF SAMPLE	GOLD \$	SLUDGE GOLD \$
0 - 22'	LEDGE				
22' - 35'	ANDESITE MASS				
35' - 43'	SHEARED ANDESITE QTZ VEIN, PYRITE, CHALCO				
43' - 55'	QTZ PORPH.				
55' - 58'	" STRINGERS SHEARED PORPH SOME MINERAL				
58' - 75'	PORPH MASS				
	13/16 CORE				

DRILLED BY J. E. LEPEVER

SIGNED J. E. Lepever

PROPERTY

HOLE NUMBER 711

SHEET NUMBER

DIAMOND DRILL RECORD

SECTION FROM 0 TO 75'

LOCATION: LAT. S.E. CORNER
 DEP. CHAIN # 2-44952
 ELEVATION OF COLLAR

STARTED JULY 22, 1949
 COMPLETED " 25, 1949
 ULTIMATE DEPTH 75'
 PROPOSED DEPTH 75'

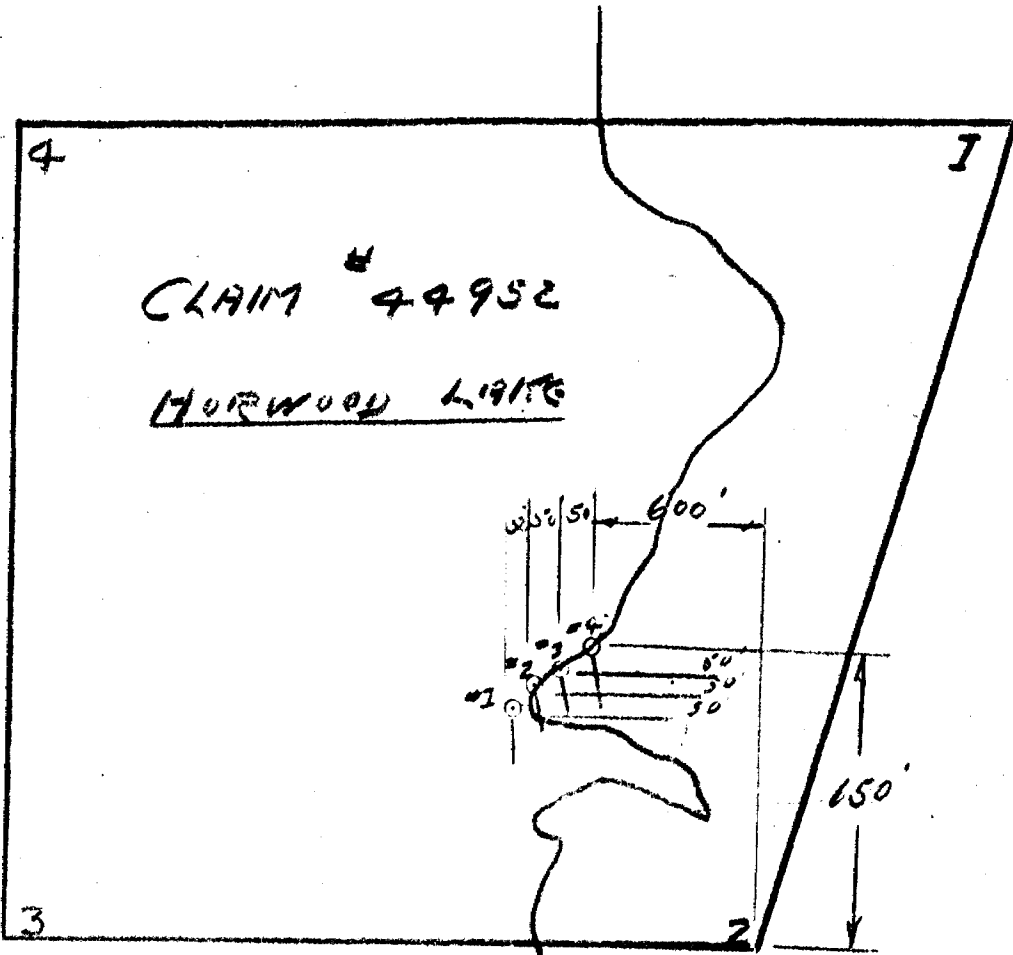
DATUM

DIRECTION AT START: BEARING NORTH
 DIP 30°

DEPTH FEET	FORMATION	SAMPLE No.	WIDTH OF SAMPLE	GOLD \$	SLUDGE GOLD \$
0 - 24'	LEDGE				
24' - 35'	ANDESITE MASS				
35' - 45'	" SHEARED				
45' - 55'	" MASS				
55' - 75'	PORPH "				
	13/16 CORE				

DRILLED BY J. E. LEFELER

SIGNED R. E. Freeman
Reg. G.S.



CLAIM # 44952

HORWOOD LIGHTS

DIAMOND DRILL HOLE TRAIN

PROPERTY

HOLE NUMBER 2

SHEET NUMBER

DIAMOND DRILL RECORD

SECTION FROM 0 TO 75

LOCATION: LAT. S.E. CORNER
 DEP. CLAIM # S-4495Y

STARTED April 17, 1950

ELEVATION OF COLLAR

COMPLETED " 21, "

DATUM

ULTIMATE DEPTH 76'

DIRECTION AT START: BEARING South 10° EAST
 DIP 45°

PROPOSED DEPTH 80'

DEPTH FEET	FORMATION	SAMPLE NO.	WIDTH OF SAMPLE	GOLD \$	SLUDGE GOLD \$
0 - 16	LEDGE				
16 - 34	ANDESITE MASS				
34 - 50	" "				
50 - 52	QTZ. PORPH - SOME MIN				
52 - 78	ANDESITE MASS				
13/16 CORE					

DRILLED BY J. L. Lynamer

SIGNED

PROPERTY.....

HOLE NUMBER 3

DIAMOND DRILL RECORD

SHEET NUMBER.....

SECTION FROM 0 TO 68'

LOCATION: LAT. S.E. CORNER
 DEP. CHAIN #S44952
 ELEVATION OF COLLAR.....
 DATUM.....

STARTED April 24, 1950
 COMPLETED " 26 "
 ULTIMATE DEPTH 68'
 PROPOSED DEPTH 80'

DIRECTION AT START: BEARING SOUTH 10° EAST
 DIP 45°

DEPTH FEET	FORMATION	SAMPLE NO.	WIDTH OF SAMPLE	GOLD \$	SLUDGE GOLD \$		
<u>0-19</u>	<u>LEDGE</u>						
<u>19-35</u>	<u>ANDESITE MASS</u>						
<u>35-36</u>	<u>QTZ STRINGERS</u>						
<u>36-68</u>	<u>IN SHEAR. SOME MIN ANDESITE MASS</u>						
<u>1 3/16 CORE</u>							

NORTHERN MINER PRESS LIMITED, TORONTO—STOCK FORM NO. 501 REV. 9/44

DRILLED BY J. E. Lynam

SIGNED.....

PROPERTY

HOLE NUMBER 4

DIAMOND DRILL RECORD

SHEET NUMBER

SECTION FROM 0 TO 63'

LOCATION: LAT. SE CORNER
 DEP. CLAIM # 3-4495

STARTED APRIL 28, 1950

ELEVATION OF COLLAR

COMPLETED MAY 2, "

DATUM

DIRECTION AT START: BEARING SOUTH 10° EAST
 DIP 45°

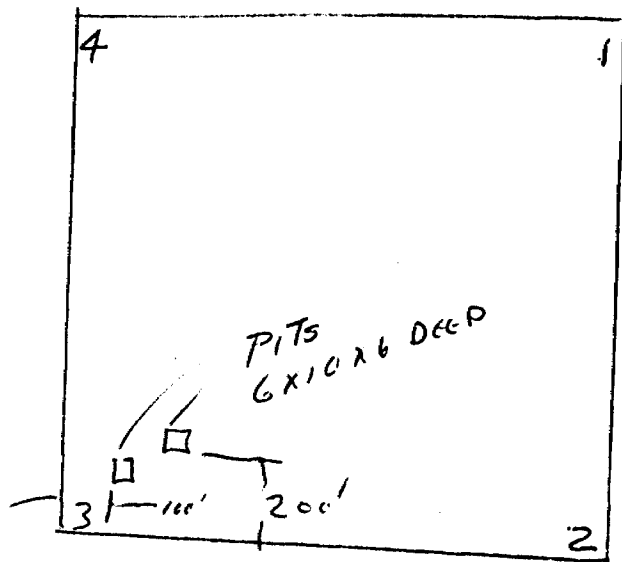
ULTIMATE DEPTH 63'

PROPOSED DEPTH 80'

DEPTH FEET	FORMATION	SAMPLE No.	WIDTH OF SAMPLE	GOLD \$	SLUDGE GOLD \$
0-16	LEDGE				
16-38	ANDESITE MASS				
38-50	" "				
50-55	SHEARING, No MIN.				
55-63	ANDESITE MASS				
13/16 CORE					

DRILLED BY J. E. Lafren

SIGNED



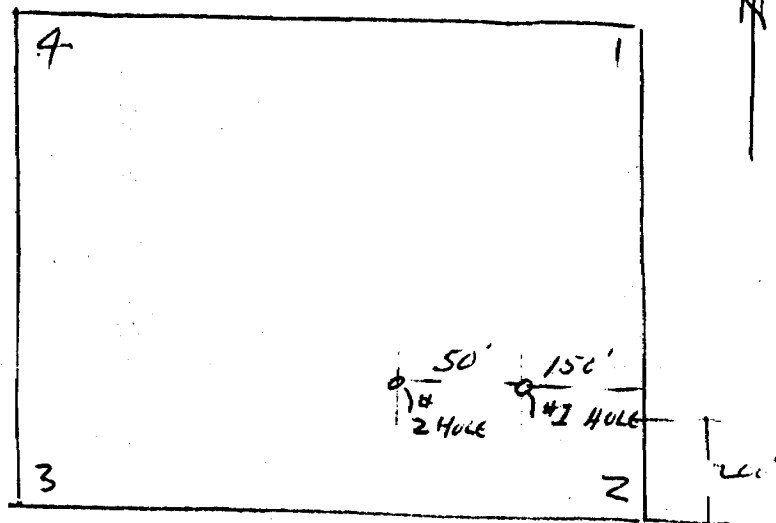
CLAIM # S-115380
HORMOOD TWP.

LOCATION
WHERE MANUAL WORK
WAS PERFORMED

REPRODUCED FROM THE ORIGINAL
SURVEY MAP FILED
IN THE OFFICE OF THE
REGISTERED PROFESSIONAL SURVEYOR

REPRODUCED

WOLEY



CLAIM S-115380 (SUB. 25338)
HORMOOD TWP.

DRILLING LOCATIONS
SEPT. 1 TO SEPT. 30, 1961

REPRODUCED FROM THE ORIGINAL
SURVEY MAP FILED
IN THE OFFICE OF THE
REGISTERED PROFESSIONAL SURVEYOR

REPRODUCED

WOLEY

DIAMOND DRILL RECORD

Hole No. 1 Sheet No. 1

Property Claim S-115380
 Location HERWOOD TWP.
 Latitude _____
 Departure _____
 Bearing _____

Dip

Total Footage 101 FT

Elev. Collar 55°
 Datum SOUTH 10' EAST
 Date Started SEPT-1-1961
 Date Completed SEPT-15-1961
 Drilled by SELF
 Logged by "

Footage		Formation	Sample Number	Sample Footage	Sample Width	Gold Sample	Gold Sludge	Remarks
From	To							
<u>0</u>	<u>18'</u>	<u>LEDGE</u>						
<u>18'</u>	<u>43'</u>	<u>DIORITE</u>						<u>SOME SUGARS - QTZ</u> <u>STRINGERS MIN.</u>
<u>43'</u>	<u>101'</u>	<u>"</u>						

Date of Examination _____

John E. Lefer
Kakabush, Ont

