

DIAMOND DRILLING



41016SE0015 17 MARION

010

TOWNSHIP: Marion

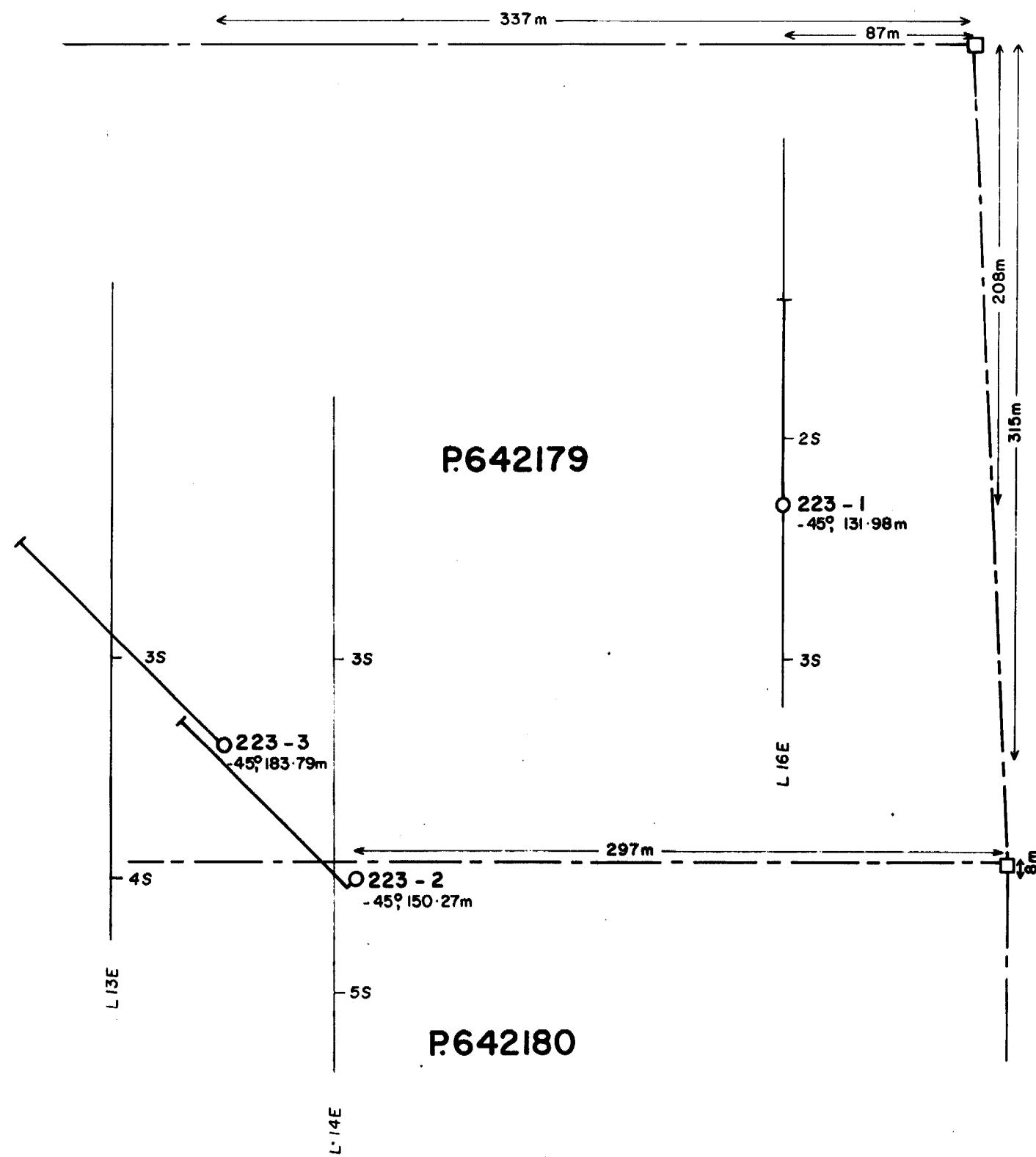
REPORT No.: 17

WORK PERFORMED BY: Dome Exploration Ltd.

<u>CLAIM No.</u>	<u>HOLE No.</u>	<u>FOOTAGE</u>	<u>DATE</u>	<u>NOTE</u>
P 642179	223-1	131.98m	Aug/83	(1)
P 642180	223-2	150.27m	Aug/83	(1)
P 642179	223-3	183.79m	Aug/83	(1)

466.04

NOTES: (1) #265-83



DOME EXPLORATION (CANADA) LTD.				
PROJ. 223 MARION TOWNSHIP, ONTARIO				
<b>DDH LOCATIONS</b>				
SCALE	DATE	BY	N.T.S. No:	DWG. No:
1:2500	SEPT 1983	T.S.	41-0-16	223-3

**DOME EXPLORATION (CANADA) LIMITED**

LOCATION: 230S, 1600E. 208 m south,  
87 m west of No. 1 post, P.642179  
AZIMUTH: 360°

**DIAMOND DRILL RECORD**

HOLE NO  
223-1

PROPERTY: PROJECT 223, Marion Township,  
Porcupine Mining Division, Ontario

DIP: -45°      LENGTH: 131.98 m      ELEVATION:      CLAIM NO: P.642179

STARTED: August 23, 1983      CORE SIZE: A.O      SYSTEM OF MEASURE: METRIC      SECTION:

COMPLETED: August 24, 1983      DIP TESTS (CORRECTED): at 131.98 m -46°15'      LOGGED BY: D. S. Hunt

PURPOSE: TO TEST CONDUCTOR AT 158S, 1600E      DATE LOGGED: August 26-28, 1983

METRES		DESCRIPTION	SAMPLE				Au g/t	Ag	Cu %	Zn %		
from	to		No.	from	to	Length						
0.00	0.61	CASING IN OVERBURDEN										
0.61	45.00	ULTRABASIC INTRUSIVE: Dark greyish-green; very fine to coarse grained; soft. Weakly to strongly magnetic. Local foliation at 40° to core axis. A few thin talc-serpentine stringers. Trace pyrite										
		1.87-2.12: A few thin talc-serpentine stringers parallel to foliation. 5% pyrite as blebs.	77710	1.87	2.12	0.25	0.69					
		2.77-2.99: Chloritic xenolith.										
		3.61-4.04: 3% disseminated pyrite.	77711	3.61	4.04	0.43	Tr					
		7.59-8.28: 3% disseminated pyrite.	77712	7.59	8.28	0.69	0.34					
		8.62-9.07: 5% disseminated pyrite.	77713	8.62	9.07	0.45	Tr					
		9.32-10.05: A moderate number of thin talc, serpentine and calcite stringers at various angles. 2% disseminated pyrite.	77714	9.32	10.05	0.73	Tr					
		10.40-11.52: 1% disseminated pyrite.	77715	10.40	11.52	1.12	Tr					
		11.88-12.39: A few thin quartz stringers, at 65°. 1% disseminated pyrite.	77716	11.88	12.39	0.51	Tr					

**DOME EXPLORATION (CANADA) LIMITED**  
**DIAMOND DRILL RECORD**

HOLE NO: 223-1  
PAGE NO: 2 of 7

METRES		DESCRIPTION	SAMPLE				Au g/t	Ag	Cu %	Zn %		
from	to		NO	from	to	Length						
		35.11-35.23: A talc-serpentine vein at 45°.										
45.00	69.25	<b>BASALT FLOWS AND TUFS:</b> Medium greyish green; very fine to fine grained; soft to hard. Locally bleached and epidotized. Local foliation at 45°. Locally pillowed. Locally porphyritic. A few thin quartz and calcite stringers.										
		45.72-46.07: Mainly bleached. A few thin quartz stringers at various angles.	77717	45.72	46.07	0.35	Tr					
		47.33-49.33: Locally bleached. A few quartz and calcite stringers, to 1 cm, at various angles.	77718	47.33	48.33	1.00	Tr					
			77719	48.33	49.33	1.00	Tr					
		49.33-51.56: Locally bleached. A few quartz and calcite stringers, to 1 cm, at various angles.	77720	49.33	50.33	1.00	Tr					
			77721	50.33	51.33	1.00	Tr					
		Trace pyrite.	77722	51.33	51.56	0.23	N11					
		51.92-52.21: A moderate number of quartz stringers to 2 cm, at 30°.	77723	51.92	52.21	0.29	N11					
		52.54-53.21: Ash tuff.										
		- 53.03-53.21: A moderate number of thin calcite and quartz stringers at various angles. Trace pyrite.	77724	53.03	53.21	0.18	N11					
		53.93-54.37: A thin quartz-hematite stringers sub-parallel to core axis. 1% pyrite.	77725	53.93	54.37	0.44	N11					
		54.70-55.20: A thin quartz-hematite-pyrite stringer sub-parallel to core axis. 2% pyrite.	77726	54.70	55.20	0.50	N11					
		55.20-56.20: Few to moderate quartz and calcite stringers, mainly at 55°. 1% pyrite.	77727	55.20	56.20	1.00	N11					

**DOMEXPLORATION (CANADA) LIMITED**  
**DIAMOND DRILL RECORD**

HOLE NO: 223-1

PAGE NO: 3 of 7

METRES		DESCRIPTION	SAMPLE				Au g/t	Ag	Cu %	Zn %		
from	to		NP	from	to	Length						
		56.42-56.91: A few thin quartz and calcite stringers at various angles. 1% pyrite.	77728	56.42	56.91	0.49	Nil					
		57.13-57.39: A 2 cm quartz-calcite stringer at 10° to 30°. 1% pyrite.	77729	57.13	57.39	0.26	Nil					
		57.39-57.82: A few calcite and quartz stringers, to 1 cm, at various angles. 1% pyrite.	77730	57.39	57.82	0.43	0.17					
		58.61-59.20: A few thin calcite, quartz and hematite stringers, mainly at 45°, 1% pyrite.	77731	58.61	59.20	0.59	Tr					
		66.94-68.52: A moderate number of quartz-hematite and calcite stringers, to 1 cm, at various angles. 1% pyrite.	77732	66.94	67.94	1.00	Tr					
			77733	67.94	68.52	0.58	0.17					
		68.73-69.10: A moderate number of quartz-hematite and calcite stringers, to 1 cm, at various angles. 1% pyrite.	77734	68.73	69.10	0.37	Nil					
		69.25: Lower contact at 55°.										
69.25	76.76	BASIC INTRUSIVE: Medium greyish green; fine to medium grained; soft to moderately soft. A few thin quartz-hematite stringers. Trace pyrite.										
		76.76: Lower contact at 40°.										
76.76	105.07	BASIC VOLCANIC FLOWS AND TUFFS: Similar to 45.00-69.25.										
		78.22-78.52: A few thin quartz-hematite-pyrite stringers at various angles. 2% pyrite.	77735	78.22	78.52	0.30	Nil					

197  
100  
1000

**DOME EXPLORATION (CANADA) LIMITED**  
**DIAMOND DRILL RECORD**

HOLE NO: 223-1  
PAGE NO: 4 of 7

METRES		DESCRIPTION	SAMPLE				Au g/t	Ag	Cu %	Zn %		
from	to		Nº	from	to	Length						
		81.04-81.18: Abundant quartz and calcite stringers to 1.5 cm, mainly at 60°.	77736	81.04	81.18	0.14	N11					
		81.33-81.47: A 1 cm quartz-hematite stringers, at 35°.	77737	81.33	81.47	0.14	N11					
		83.24-83.79: A moderate number of quartz, calcite and quartz-hematite stringers, to 1 cm, at various angles.	77738	83.24	83.79	0.55	N11					
		89.81-90.41: A moderate number of calcite and quartz stringers, to 1 cm, mainly at 55°, 1% pyrite.	77739	89.81	90.41	0.60	N11					
		90.41-90.62: A 15 cm zone of graphitic argillite and thin calcite stringers. 5% pyrite. - CONDUCTIVE -	77740	90.41	90.62	0.21	Tr					
		93.52-93.66: A 2 cm quartz-hematite-calcite stringer at 35°. Trace pyrite.	77741	93.52	93.66	0.14	0.34					
		95.52-96.40: A few graphitic stringers, to 1 cm, parallel to foliation at 50°. Few to moderate thin calcite stringers at 40°. Trace to 1% pyrite.	77742	95.52	96.40	0.88	0.69					
		96.40-96.87: Graphitic argillite. Banded at 50°. A few thin calcite-quartz stringers at various angles. 10% pyrite as blebs. - CONDUCTIVE -	77743	96.40	96.87	0.47	0.17					
		96.87-97.09: Basalt ash tuff with graphitic laminae. A few thin calcite stringers at various angles.	77744	96.87	97.09	0.27	0.17					
		97.09-97.36: Graphitic argillite. 3% pyrite as specks and tiny stringers.	77745	97.09	97.36	0.27	Tr					

**DOME EXPLORATION (CANADA) LIMITED**  
**DIAMOND DRILL RECORD**

HOLE No: 223-1  
PAGE No: 5 of 7

METRES		DESCRIPTION	SAMPLE				Au g/t	Ag	Cu %	Zn %		
from	to		No	from	to	Length						
		98.42-98.75: Graphitic argillite at 55°. Graded bedding indicates tops up hole. A few thin calcite stringers at various angles. 3% pyrite. - CONDUCTIVE -	77746	98.42	98.75	0.33	Tr					
		99.36-101.54: A few thin calcite and quartz stringers at various angles. Trace to 1% pyrite.	77747	99.36	100.36	1.00	0.34					
			77748	100.36	101.54	1.18	0.17					
		101.54-101.64: A calcite-quartz stringer at 90°.	77749	101.54	101.64	0.10	0.17					
		101.64-101.98: A few thin calcite stringers and quartz blebs at various angles. Trace pyrite.	77750	101.64	101.98	0.34	0.17					
		102.58-104.96: A few quartz and calcite stringers, to 3.5 cm, mainly at 65°. Trace pyrite.	77751	102.58	103.58	1.00	0.17					
			77752	103.58	104.58	1.00	Tr					
			77753	104.58	104.96	0.38	Tr					
		104.96-105.07: Graphitic argillite at 50°. 4% pyrite.	77754	104.96	105.07	0.11	0.34					
		105.07: Lower contact at 40°.										
105.07	106.57	ACID ASH, CRYSTAL AND LAPILLI TUFF: Medium grey; coarse grained; hard. Foliation and bedding at 50° Local thin hematite stringers, often parallel to foliation. Trace pyrite.										
		106.57: Lower contact, rusty, at 25°.										
106.57	111.33	GRAPHITIC ARGILLITE: Dark grey to black; very fine grained; soft to hard. Bedding at 55°. -CONDUCTIVE-										
		106.57-106.93: 5% pyrite, mainly as laminae.	77755	106.57	106.93	0.36	0.17					





**DOME EXPLORATION (CANADA) LIMITED**  
**DIAMOND DRILL RECORD**

HOLE NO: 223-1  
PAGE NO: 7 of 7

METRES		DESCRIPTION	SAMPLE				Au g/t	Ag	Cu %	Zn %		
from	to		NO	from	to	Length						
118.69	120.40	ACID TUFF: Similar to 105.07-106.57. Schistosity at 50°. Trace pyrite.										
120.40	124.89	GRAPHITIC ARGILLITE: Similar to 106.57-111.33. Bedding at 60° - CONDUCTIVE -										
		120.40-122.92: 1% disseminated pyrite.	77766	120.40	121.40	1.00	Tr					
			77767	121.40	122.40	1.00	Tr					
			77768	122.40	122.92	0.52	Tr					
		122.92-123.79: Basalt										
		123.79-124.89: 3% pyrite as laminae.	77769	123.79	124.89	1.10	0.17					
124.89	131.98	BASIC OR ULTRABASIC VOLCANIC: Medium bluish green fine to very fine grained; moderately soft to soft. Talcose. Strong schistosity at 40°. A few thin calcite and quartz stringers. Trace pyrite.										
	131.98	END OF HOLE										
		The conductor is caused by six graphitic argillite horizons, varying from 0.21 to 4.76 m thick, from 90.41 to 124.89 m.										
		Drilling by Moderne Diamond Drilling Val d'Or, Quebec.										
		Core stored at Dome Mine, South Porcupine, Ontario.										
		Core checked for radioactivity and fluorescence. Nothing of interest.										

**DOME EXPLORATION (CANADA) LIMITED**

LOCATION: 400S, 1410E. 8 m south and 297 m west of No. 1 Post, P.642180	<b>DIAMOND DRILL RECORD</b>	HOLE NO 223-2
AZIMUTH: 315°		PROPERTY: PROJECT 223, Marion Township, Ontario
DIP: -45°	LENGTH: 150.27 m	ELEVATION:
STARTED: August 20, 1983	CORE SIZE: A.Q.	SYSTEM OF MEASURE: METRIC
COMPLETED: August 22, 1983	DIP TESTS (CORRECTED): at 150.27 m	-44°45'
PURPOSE: TO CROSS-SECTION GRANITE	LOGGED BY: D. S. Hunt	DATE LOGGED: Aug. 23, 25, 26, 1983

METRES		DESCRIPTION	SAMPLE				Au g/t	Ag	Cu %	Zn %
from	to		No.	from	to	Length				
0.00	29.83	BASIC INTRUSIVE: Medium greyish green; fine to medium grained; soft to moderately hard. A few thin quartz stringers. Trace pyrite.								
		2.39-2.55: A 7 cm quartz vein at 80° to core axis.	77643	2.39	2.55	0.16	Tr			
		6.66-7.47: A few quartz stringers, to 12 cm.	77644	6.66	7.47	0.81	Tr			
		9.53-9.77: A few quartz stringers, to 1.5 cm, at various angles.	77645	9.53	9.77	0.24	Tr			
		29.56-29.83: Bleached.								
		29.83: Lower contact at 25°.								
29.83	35.66	QUARTZ-FELDSPAR PORPHYRY: Medium grey; medium grained; hard. Trace pyrite.								
		32.17-32.88: Ultrabasic volcanic xenolith.								
		33.80-35.15: 1% disseminated pyrite.	77646	33.80	34.80	1.00	Tr			
			77647	34.80	35.15	0.35	Tr			
		35.66: Lower contact at 50°.								
35.66	43.30	ULTRABASIC VOLCANIC FLOWS: Dark greenish grey, fine to very fine grained; soft; weakly magnetic. Several								

**DOME EXPLORATION (CANADA) LIMITED**  
**DIAMOND DRILL RECORD**

HOLE NO: 223-2  
PAGE NO: 2 of 7

METRES		DESCRIPTION	SAMPLE				Au g/t	Ag	Cu %	Zn %		
from	to		NO	from	to	Length						
		spinifex zones.										
		43.30: Lower contact at 55°.										
43.30	51.41	QUARTZ-FELDSPAR PORPHYRY: Similar to 29.83-35.66.										
		43.78-45.47: 1% disseminated pyrite.	77648	43.78	44.78	1.00	Tr					
			77649	44.78	45.47	0.69	Tr					
		50.38-51.00: A thin quartz stringer at 0°. Trace to 1% pyrite.	77650	50.38	51.00	0.62	Tr					
		51.41: Lower contact at 75°.										
51.41	105.78	ULTRABASIC VOLCANIC FLOWS AND TUFFS: Similar to 35.66-43.30. Local schistosity at 40°.										
		51.46-51.60: Quartz-feldspar porphyry.										
		54.94-55.54: Quartz feldspar porphyry.										
		58.60-58.80: A 6 cm talc-serpentine stringer at 15°. 3% pyrite.	77651	58.60	58.80	0.20	Tr					
		59.26-59.40: A moderate number of quartz stringers to 1.5 cm, at various angles.	77652	59.26	59.40	0.14	1.03					
		62.45-62.57: A thin talc stringer at 25°. 1% pyrite, concentrated in stringer.	77653	62.45	62.57	0.12	Tr					
		84.78-84.96: A few thin calcite stringers at various angles. 1% pyrite.	77654	84.78	84.96	0.18	0.17					
		85.50-85.64: A few thin calcite stringers at various angles. 1% pyrite.	77655	85.50	85.64	0.14	Tr					



**DOME EXPLORATION (CANADA) LIMITED**  
**DIAMOND DRILL RECORD**

HOLE NO: 223-2

PAGE NO: 4 of 7

METRES		DESCRIPTION	SAMPLE				Au g/t	Ag	Cu %	Zn %		
from	to		NO	from	to	Length						
107.43	110.47	ULTRABASIC VOLCANIC FLOWS: Similar to 35.66-43.30.										
		107.71-107.97: A moderate number of thin calcite and quartz stringers, mainly at 60°. 1% pyrite.	77669	107.71	107.96	0.26	Tr					
110.47	116.87	QUARTZ-FELDSPAR PORPHYRY: Similar to 105.78-107.43 A few local fractures are coated with specularite.										
		116.87: Lower contact at 45°.										
116.87	124.34	ULTRABASIC VOLCANIC FLOWS: Similar to 35.66-43.30.										
		116.87-118.61: A moderate number of thin wispy calcite stringers at various angles. Trace pyrite.	77670	116.87	117.85	0.98	Tr					
			77671	117.85	118.61	0.76	Tr					
		118.61-118.68: Quartz-feldspar porphyry at 55°.										
		119.45-119.62: A moderate number of thin wispy calcite stringers. 3% pyrite.	77672	119.45	119.62	0.17	Tr					
		119.62-121.35: Few to moderate thin calcite stringers at various angles. Trace to 1% pyrite.	77673	119.62	120.62	1.00	Tr					
			77674	120.62	121.35	0.73	Tr					
		121.35-121.58: Abundant calcite-quartz stringers, to 1-5 cm, at various angles.	77675	121.35	121.58	0.23	Tr					
		121.58-121.76: Quartz-feldspar porphyry.										
		121.76-123.99: Few to moderate thin wispy calcite stringers, mainly at 40°. A few quartz stringers to 1 cm.	77676	121.76	122.76	1.00	Tr					
			77677	122.76	123.76	1.00	Tr					
			77678	123.76	123.99	0.23	Tr					
		123.99-124.34: Quartz-feldspar porphyry. A few thin quartz stringers, mainly at 55°. 1% pyrite.	77679	123.99	124.34	0.35	0.17					

**DOME EXPLORATION (CANADA) LIMITED**  
**DIAMOND DRILL RECORD**

HOLE No: 223-2

PAGE No: 5 of 7

METRES		DESCRIPTION	SAMPLE				Au g/t	Ag	Cu %	Zn %		
from	to		No	from	to	Length						
124.34	150.27	GRANITE: Pale to medium pink; medium to coarse grained; hard. A few thin quartz and chlorite stringers. Trace pyrite.										
		124.34-124.57: 4% pyrite and trace molybdenite.	77680	124.34	124.57	0.23	1.37					
		124.57-125.57: 2% pyrite.	77681	124.57	125.57	1.00	Tr					
		125.57-126.48: A moderate number of thin quartz stringers at various angles. 3% pyrite.	77682	125.57	126.48	0.91	Tr					
		126.48-126.61: A quartz vein. Trace pyrite.	77683	126.48	126.61	0.13	Tr					
		126.61-126.99: 4% pyrite.	77684	126.61	126.99	0.38	0.34					
		126.99-128.04: Quartz-feldspar porphyry. Schistosity at 40°. A few thin quartz stringers mainly parallel to schistosity. 2% pyrite.	77685	126.99	128.04	1.05	Tr					
		128.04-131.73: A few thin quartz stringers at various angles. 2% pyrite.	77686	128.04	129.03	0.99	Tr					
			77687	129.03	130.03	1.00	Tr					
			77688	130.03	131.00	0.97	Tr					
			77689	131.00	131.73	0.73	Tr					
		131.73-132.46: Abundant quartz veins, to 3 cm, at various angles. 1% pyrite.	77690	131.73	132.46	0.73	Tr					
		132.46-134.28: A moderate number of quartz stringers, to 2 cm, at various angles. 1% pyrite.	77691	132.46	133.46	1.00	Tr					
			77692	133.46	134.28	0.82	Tr					
		134.28-134.87: Quartz-feldspar porphyry. A few thin quartz stringers at various angles. 1% pyrite.	77693	134.28	134.87	0.59	0.17					
		134.87-135.39: Moderate to abundant quartz stringers, to 1 cm, at various angles. 5% pyrite.	77694	134.87	135.39	0.52	Tr					

**DOME EXPLORATION (CANADA) LIMITED**  
**DIAMOND DRILL RECORD**

HOLE No: 223-2  
PAGE No: 6 of 7

METRES		DESCRIPTION	SAMPLE				Au g/t	Ag	Cu %	Zn %		
from	to		No	from	to	Length						
		135.39-135.51: Quartz-feldspar porphyry.										
		135.76-136.54: Quartz-feldspar porphyry. Few to moderate quartz stringers, to 1 cm, at various angles. 1% pyrite and trace chalcopyrite.	77695	135.76	136.54	0.78	Tr					
		136.54-139.65: A few quartz stringers, to 1 cm, at various angles. 3% pyrite.	77696	136.54	137.54	1.00	Tr					
			77697	137.54	138.54	1.00	Tr					
			77698	138.54	139.54	1.00	Tr					
			77699	139.54	139.65	0.31	Tr					
		139.85-140.25: Ultrabasic volcanic xenolith.										
		140.25-141.25: A few thin quartz stringers at various angles. 1% pyrite.	77700	140.25	141.25	1.00	Tr					
		141.25-142.25: A few thin quartz stringers at various angles. 2% pyrite.	77701	141.25	142.25	1.00	Tr					
		142.25-142.84: 1% pyrite.	77702	142.25	142.84	0.59	Tr					
		143.50-146.49: 1% pyrite.	77703	143.50	144.50	1.00	Tr					
			77704	144.50	145.50	1.00	Tr					
			77705	145.50	146.49	0.99	Tr					
		146.49-148.56: A few thin quartz stringers at various angles. 1% pyrite.	77706	146.49	147.49	1.00	Tr					
			77707	147.49	148.56	1.07	Nil					
		148.56-148.86: Quartz-feldspar porphyry.										
		148.86-149.33: 1% pyrite.	77708	148.86	149.33	0.47	Nil					
		149.33-150.27: A few thin quartz stringers at various angles. 3% pyrite as disseminated blebs and stringers associated with chlorite.	77709	149.33	150.27	0.94	0.17					

**DOME EXPLORATION (CANADA) LIMITED**

**DIAMOND DRILL RECORD**

HOLE NO: 223-2

PAGE NO: 7 of 7

METRES		DESCRIPTION	SAMPLE				Au g/t	Ag	Cu %	Zn %		
from	to		NO	from	to	Length						
	150.27	END OF HOLE										
		Drilling by Moderne Diamond Drilling, Val d'Or, Quebec										
		Core stored at Dome Mine, South Porcupine, Ontario										
		Core checked for radioactivity. Nothing of interest.										
		Core checked for fluorescence. Rare talc fluoresces bluish-white. K-feldspar (?) in granite fluoresces red.										
		All casing pulled. Hole not cemented.										

*[Handwritten signature]*



**DOME EXPLORATION (CANADA) LIMITED**

LOCATION: 340S, 1350E; 315 m south, 337 m west of No. 1 Post, P.642179.	<b>DIAMOND DRILL RECORD</b>	HOLE No 223-3
AZIMUTH: 315°		PROPERTY: PROJECT 223, Marion Township Ontario
DIP: -45°	LENGTH: 183.79 m	ELEVATION: CLAIM No: P.642179
STARTED: August 15, 1983	CORE SIZE: A.Q.	SYSTEM OF MEASURE: METRIC
COMPLETED: August 19, 1983	DIP TESTS (CORRECTED): at 183.79 m	-46°15'
PURPOSE: TO CROSS-SECTION GRANITIC SILL	DATE LOGGED: August 20-22, 1983	LOGGED BY: D. S. Hunt

METRES		DESCRIPTION	SAMPLE				Au g/t	Ag	Cu %	Zn %		
from	to		No.	from	to	Length						
0.00	7.92	CASING IN OVERBURDEN										
7.92	38.51	GRANITE: Pale pink; medium to coarse grained; hard Local weak gneissosity at 60° to core axis. A few thin quartz and chlorite stringers. Trace pyrite.										
		7.92-9.53: A few quartz stringers, to 2 cm, at various angles. 1 to 2% disseminated pyrite.	77525	7.92	8.92	1.00	Tr					
			77526	8.92	9.53	0.61	0.17					
		10.89-15.05: A few quartz stringers, to 1 cm, at various angles. 1% disseminated pyrite.	77527	10.89	11.89	1.00	0.34					
			77528	11.89	12.89	1.00	0.17					
			77529	12.89	13.89	1.00	Tr					
			77530	13.89	15.05	1.16	Tr					
		15.05-15.22: A thin quartz stringer at 0°. 3% pyrite.	77531	15.05	15.22	0.17	Tr					
		15.22-16.62: A few quartz stringers, to 1 cm, at various angles. 1 to 2% disseminated pyrite.	77532	15.22	16.22	1.00	Tr					
			77533	16.22	16.62	0.40	0.17					
		16.62-16.80: A talc-chlorite stringer, schistose at 40°.										
		16.80-18.73: A moderate number of quartz stringers to 7 cm, mainly at 30°. 1% pyrite.	77534	16.80	17.80	1.00	Tr					
			77535	17.80	18.73	0.93	Tr					

**DOME EXPLORATION (CANADA) LIMITED**  
**DIAMOND DRILL RECORD**

HOLE NO: 223-3  
PAGE NO: 2 of 10

METRES		DESCRIPTION	SAMPLE				Au g/t	Ag	Cu %	Zn %		
from	to		Nº	from	to	Length						
		18.73-18.95: 5% pyrite as cubes, blebs, and one thin stringer.	77536	18.73	18.95	0.22	Tr					
		18.95-20.16: Moderate to abundant quartz veins, to 2 cm, at various angles. 3% pyrite.	77537	18.95	19.95	1.00	Tr					
			77538	19.95	20.16	0.21	Tr					
		20.16-20.37: A quartz vein at 30°.	77539	20.16	20.37	0.21	0.17					
		20.37-21.54: Moderate to abundant quartz stringers to 9 cm, at various angles. 3% pyrite.	77540	20.37	21.38	1.01	Tr					
			77541	21.38	21.54	0.16	0.17					
		21.54-21.70: 8% pyrite as specks and one thin stringer.	77542	21.54	21.70	0.16	0.34					
		21.70-22.60: A moderate number of quartz stringers to 1 cm, mainly at 40°. 2% pyrite.	77543	21.70	22.60	0.97	0.17					
		23.61-26.35: A moderate number of quartz stringers to 3 cm, mainly at 50°. 1 to 2% pyrite.	77544	23.61	24.61	1.00	Tr					
			77545	24.61	25.60	0.99	Tr					
			77546	25.60	26.35	0.75	Tr					
		26.84-27.03: 30% quartz and 10% pyrite as stringers.	77547	26.84	27.03	0.19	0.17					
		27.03-27.43: A quartz vein at 50°. Trace pyrite.	77548	27.03	27.43	0.40	Tr					
		27.43-27.56: Gneissosity at 50°. 1% pyrite.	77549	27.43	27.56	0.13	Tr					
		27.56-28.46: A moderate number of quartz stringers to 1.5 cm, at various angles. 1% pyrite.	77550	27.56	28.46	0.90	Tr					
		28.46-28.97: A few thin quartz stringers at various angles. 3% pyrite.	77551	28.46	28.97	0.51	Tr					
		28.97-30.06: A few thin quartz stringers at 40°. 1% pyrite.	77552	28.97	30.06	1.09	Tr					

**DOME EXPLORATION (CANADA) LIMITED**  
**DIAMOND DRILL RECORD**

HOLE No: 223-3

PAGE No: 3 of 10

METRES		DESCRIPTION	SAMPLE				Au g/t	Ag	Cu %	Zn %		
from	to		Nº	from	to	Length						
		30.06-30.38: A few thin quartz stringers. 10% pyrite as thin stringers at 10°.	77553	30.06	30.38	0.32	0.69					
		30.38-30.67: A few thin quartz stringers at various angles. 1% pyrite.	77554	30.38	30.67	0.29	0.17					
		30.67-32.17: Quartz-feldspar porphyry. Schistosity at 50°.										
		- 31.22-32.17: Few to moderate thin quartz-chlorite stringers, mainly parallel to schistosity.	77555	31.22	32.17	0.95	Tr					
		32.17-36.19: A moderate number of quartz stringers to 8 cm, at various angles. 2% pyrite. A few quartz-feldspar porphyry dykes to 3 cm.	77556	32.17	33.19	1.02	Tr					
			77557	33.19	34.19	1.00	Tr					
			77558	34.19	35.19	1.00	Tr					
			77559	35.19	36.19	1.00	Tr					
		36.19-37.26: As above but with trace molybdenite.	77560	36.19	37.26	1.07	0.17					
		37.26-38.51: Very fine grained. A moderate number quartz stringers, to 2 cm, mainly at 30 to 50°. 2% pyrite and trace molybdenite.	77561	37.26	38.26	1.00	Tr					
			77562	38.26	38.51	0.25	0.17					
38.51	48.27	QUARTZ-FELDSPAR PORPHYRY: Medium greyish pink; medium grained; hard. Gneissosity at 50°. A few thin quartz and chlorite stringers. Trace pyrite.										
		39.95-40.95: 1% pyrite.	77563	39.95	40.95	1.00	0.17					
		40.95-41.46: A few thin quartz stringers at 60°. 2% pyrite.	77564	40.95	41.46	0.51	0.17					
		41.46-41.75: 1% pyrite.	77565	41.46	41.75	0.29	0.34					
		41.75-42.08: A few thin quartz and chlorite stringers at various angles. 3% pyrite.	77566	41.75	42.08	0.33	0.17					

**DOMEXPLORATION (CANADA) LIMITED**  
**DIAMOND DRILL RECORD**

HOLE No: 223-3

PAGE No: 4 of 10

METRES		DESCRIPTION	SAMPLE				Au g/t	Ag	Cu %	Zn %		
from	to		No	from	to	Length						
		42.08-43.74: 1% pyrite.	77567	42.08	43.06	0.98	0.17					
			77568	43.06	46.74	0.68	0.17					
		44.70-45.57: A moderate number of quartz stringers, to 1 cm, at various angles. 2% pyrite.	77569	44.70	45.57	0.87	0.34					
		45.57-46.57: A few thin quartz stringers at various angles. 1% pyrite.	77570	45.57	46.57	1.00	0.17					
		46.57-46.78: A 4 cm quartz vein at 30°. 2% pyrite.	77571	46.57	46.78	0.21	0.17					
		46.78-47.02: 2% pyrite.	77572	46.78	47.02	0.24	0.17					
		47.87-48.27: A few thin quartz stringers at various angles. 1% pyrite.	77573	47.87	48.27	0.40	0.17					
48.27	99.56	GRANITE: Similar to 7.92-38.51.										
		48.27-48.66: Abundant quartz stringers, to 1.5 cm at various angles.	77574	48.27	48.66	0.39	Tr					
		48.94-50.02: A few quartz stringers, to 1.5 cm, at various angles. 1% pyrite.	77575	48.94	50.02	1.08	Tr					
		51.81-52.00: 2% pyrite.	77576	51.81	52.00	0.19	Tr					
		52.12-53.03: A few quartz stringers, to 1.5 cm, at various angles. 2% pyrite.	77577	52.12	53.03	0.86	0.34					
		53.18-53.37: Quartz-feldspar porphyry.										
		53.37-53.64: 2% pyrite.	77578	53.37	53.64	0.27	Tr					
		54.47-59.36: A few thin quartz stringers. A few quartz-feldspar porphyry dykes to 10 cm. 1% pyrite.	77579	54.47	55.47	1.00	Tr					
			77580	55.47	56.47	1.00	0.17					

**DOME EXPLORATION (CANADA) LIMITED**  
**DIAMOND DRILL RECORD**

HOLE No: 223-3

PAGE No: 5 of 10

METRES		DESCRIPTION	SAMPLE				Au g/t	Ag	Cu %	Zn %		
from	to		No	from	to	Length						
			77581	56.47	57.47	1.00	Tr					
			77582	57.47	58.47	1.00	0.17					
			77583	58.47	59.36	0.89	0.17					
		59.36-59.98: Quartz-feldspar porphyry. A few quartz veins to 1 cm, at various angles. Upper contact at 15°; lower contact at 40°.										
		61.13-63.33: Few to moderate quartz stringers, to 3 cm, mainly at 60°. 1% pyrite.	77584	61.13	62.13	1.00	0.17					
			77585	62.13	63.13	1.00	0.17					
			77586	63.13	63.33	0.20	Tr					
		63.33-64.39: A moderate number of quartz stringers to 2.5 cm, mainly at 65°. 3% pyrite.	77587	63.33	64.39	1.06	Tr					
		64.39-65.04: A few quartz stringers, to 1.5 cm, at various angles. 1% pyrite.	77588	64.39	65.04	0.65	Tr					
		66.61-67.62: A few quartz stringers, to 2 cm, 1% pyrite.	77589	66.61	67.62	1.01	Tr					
		67.62-67.96: Two quartz stringers, to 3 cm, at various angles. 4% pyrite, concentrated in stringers near quartz stringer margins.	77590	67.62	67.96	0.34	0.34					
		67.96-69.59: A few thin quartz stringers at various angles. 1% pyrite.	77591	67.96	69.00	1.04	Tr					
			77592	69.00	69.59	0.59	Tr					
		69.59-69.81: A 5 cm quartz vein at 50°. 3% pyrite. Trace sericite.	77593	69.59	69.81	0.22	Tr					
		69.81-73.51: A few quartz stringers, to 1 cm, at various angles. 1% pyrite.	77594	69.81	70.81	1.00	0.17					
			77595	70.81	71.81	1.00	Tr					
			77596	71.81	72.81	1.00	0.17					
			77597	72.81	73.51	0.70	Tr					

**DOME EXPLORATION (CANADA) LIMITED**  
**DIAMOND DRILL RECORD**

HOLE NO: 223-3  
PAGE NO: 6 of 10

METRES		DESCRIPTION	SAMPLE				Au g/t	Ag	Cu %	Zn %		
from	to		Nº	from	to	Length						
		74.73-74.98: A few thin quartz stringers at various angles. 1% pyrite.	77598	74.73	74.98	0.25	Tr					
		74.98-75.11: 70% quartz and 10% pyrite.	77599	74.98	75.11	0.13	Tr					
		75.73-75.97: A few quartz veins, to 1 cm, at 40°, 2% pyrite.	77600	75.73	75.97	0.24	Tr					
		75.97-76.32: 1% pyrite.	77601	75.97	76.32	0.35	Tr					
		77.70-78.09: Quartz-feldspar porphyry.										
		78.96-78.99: Quartz-feldspar porphyry.										
		83.00-83.56: A few quartz stringers, to 1.5 cm, at various angles.	77602	83.00	83.56	0.56	Tr					
		87.80-88.33: A few thin quartz stringers at 60°. Trace pyrite.	77603	87.80	88.33	0.53	Tr					
		90.85-91.52: A few thin quartz stringers at 50°.	77604	90.85	91.52	0.67	Tr					
		91.62-92.15: A few thin quartz stringers at various angles. 1% pyrite.	77605	91.62	92.15	0.53	Tr					
		92.15-92.35: A 10 cm quartz vein at 70°.	77606	92.15	92.35	0.20	Tr					
		92.35-93.23: 1% pyrite.	77607	92.35	93.23	0.88	0.17					
		94.72-94.92: A few quartz stringers, to 1 cm, at 40°. 1% pyrite.	77608	94.72	94.92	0.20	Tr					
		95.70-96.10: A few thin quartz stringers at various angles. 1% pyrite.	77609	95.70	96.10	0.40	Tr					







**DOME EXPLORATION (CANADA) LIMITED**  
**DIAMOND DRILL RECORD**

HOLE No: 223-3  
PAGE No: 9 of 10

METRES		DESCRIPTION	SAMPLE				Au g/t	Ag	Cu %	Zn %		
from	to		No	from	to	Length						
		160.04-160.32: Quartz-feldspar porphyry at 70°.										
		160.43-160.79: Quartz-feldspar porphyry.										
		161.82-162.04: Slightly bleached. A moderate number of thin calcite and quartz stringers, mainly at 45°. 2% pyrite.	77623	161.82	162.04	0.22	Tr					
		167.38: Lower contact at 60°.										
167.38	180.97	<u>QUARTZ-FELDSPAR PORPHYRY: Similar to 158.06-159.66</u>										
		167.38-168.27: A quartz vein. Trace pyrite and molybdenite near lower contact.	77624	167.38	168.27	0.89	Tr					
		168.27-169.25: A few thin quartz stringers at various angles. 4% pyrite.	77625	168.27	169.25	0.98	0.17					
		169.25-169.34: Ultrabasic volcanic xenolith.										
		169.34-169.84: A few thin quartz stringers at various angles. 5% pyrite.	77626	169.34	169.84	0.54	Tr					
		169.84-170.00: Ultrabasic volcanic xenolith and a 1.5 cm quartz stringer at 0°. 3% pyrite.	77627	169.84	170.00	0.16	Tr					
		170.32-171.06: A quartz vein. Trace pyrite. Upper contact at 40°. Lower contact irregular.	77628	170.32	171.06	0.74	Tr					
		171.06-172.51: A few quartz veins, to 2 cm, at various angles. 2% pyrite.	77629	171.06	172.06	1.00	Tr					
			77630	172.06	172.51	0.45	Tr					
		172.51-172.66: 70% quartz, 1% pyrite.	77631	172.51	172.66	0.15	Tr					
		172.66-172.81: 3% pyrite.	77632	172.66	172.81	0.15	Tr					

**DOME EXPLORATION (CANADA) LIMITED**  
**DIAMOND DRILL RECORD**

HOLE No: 223-3  
PAGE No: 10 of 10

METRES		DESCRIPTION	SAMPLE				Au g/t	Ag	Cu %	Zn %		
from	to		No	from	to	Length						
		173.13-173.79: A moderate number of quartz stringers, to 1 cm, at various angles. 2% pyrite and trace molybdenite.	77633	173.13	173.79	0.66	Tr					
		173.79-173.96: A few quartz stringers, to 1.5 cm, at various angles. 4% pyrite.	77634	173.79	173.96	0.17	0.17					
		173.96-174.75: Quartz vein. 1% pyrite.	77635	173.96	174.75	0.79	Tr					
		174.75-178.41: A few quartz veins, to 2.5 cm, 2% pyrite.	77636	174.75	175.75	1.00	Tr					
			77637	175.75	176.75	1.00	Tr					
			77638	176.75	177.75	1.00	Tr					
			77639	177.75	178.41	0.66	Tr					
		178.41-180.97: A few thin quartz stringers at various angles. 1% pyrite, trace molybdenite.	77640	178.41	179.41	1.00	Tr					
			77641	179.41	180.41	1.00	Tr					
			77642	180.41	180.97	0.56	0.17					
		180.97: Lower contact at 25°.										
180.97	183.97	ULTRABASIC VOLCANIC: Similar to 101.39-103.83. Local schistosity at 50°.										
	183.79	END OF HOLE										
		Drilling by Moderne Diamond Drilling, Val d'Or, Quebec.										
		Core stored at Dome Mine, South Porcupine, Ontario										
		Core checked for radioactivity. Nothing of interest										
		Core checked for fluorescence. Some feldspar fluoresces red.										
		All casing pulled. Hole not cemented.										



Ministry of Natural Resources

Report of Work

- 223 -

#265



41016SE0015 17 MARION

The Mining

900

Name and Postal Address of Recorded Holder

W8506-065 DOME EXPLORATION (CANADA) LIMITED

MARION 14

A21304

P.O. Box 270, Suite 2700, 1 First Canadian Place, Toronto, Ontario M5X 1H1

Summary of Work Performance and Distribution of Credits

Total Work Days Cr. claimed 1529	Mining Claim		Work Days Cr.	Mining Claim		Work Days Cr.	Mining Claim		Work Days Cr.
	Prefix	Number		Prefix	Number		Prefix	Number	
		SEE	ATTACHED		SCHEDULE				
for Performance of the following work. (Check one only)	<input type="checkbox"/>	Manual Work							
	<input type="checkbox"/>	Shaft Sinking Drifting or other Lateral Work.							
	<input type="checkbox"/>	Compressed Air, other Power driven or mechanical equip.							
	<input type="checkbox"/>	Power Stripping							
	<input checked="" type="checkbox"/>	Diamond or other Core drilling							
	<input type="checkbox"/>	Land Survey							

ONTARIO GEOLOGICAL SURVEY  
ASSESSMENT FILES  
RESEARCH OFFICE  
NOV 2 1983  
RECEIVED

All the work was performed on Mining Claim(s): P.642179, P.642180

Required Information eg: type of equipment, Names, Addresses, etc. (See Table Below)

Hole No.	Length	Dates
223-1	131.98 m (433')	August 23-24, 1983
223-2	150.27 m (493')	August 20-22, 1983
223-3	183.79 m (603')	August 15-19, 1983

All core AQ

Drilling by Moderne Diamond Drilling Inc. Val d'Or, Quebec

RECORDED  
OCT 8 1983  
Receipt No. \_\_\_\_\_

PROVINCIAL MINING DIVISION  
RECEIVED  
OCT 5 1983  
P.M.

Date of Report September 29, 1983	Recorded Holder or Agent (Signature) <i>E. G. Pigulski</i>
--------------------------------------	---

Certification Verifying Report of Work

I hereby certify that I have a personal and intimate knowledge of the facts set forth in the Report of Work annexed hereto, having performed the work or witnessed same during and/or after its completion and the annexed report is true.

Name and Postal Address of Person Certifying L.B. Halladay, P.O.Box 270, Ste. 2700, 1 First Canadian Place, Toronto, Ontario M5X 1H1	
Date Certified September 29, 1983	Certified by (Signature) <i>L.B. Halladay</i>

Table of Information/Attachments Required by the Mining Recorder

Type of Work	Specific information per type	Other information (Common to 2 or more types)	Attachments
Manual Work	Nil	Names and addresses of men who performed manual work/operated equipment, together with dates and hours of employment.	Work Sketch: these are required to show the location and extent of work in relation to the nearest claim post.
Shaft Sinking, Drifting or other Lateral Work			
Compressed air, other power driven or mechanical equip.	Type of equipment		
Power Stripping	Type of equipment and amount expended. Note: Proof of actual cost must be submitted within 30 days of recording.	Names and addresses of owner or operator together with dates when drilling/stripping	

# MARION

M-853

DISTRICT OF  
SUDBURY

PORCUPINE  
MINING DIVISION

SCALE: 1-INCH = 40 CHAINS

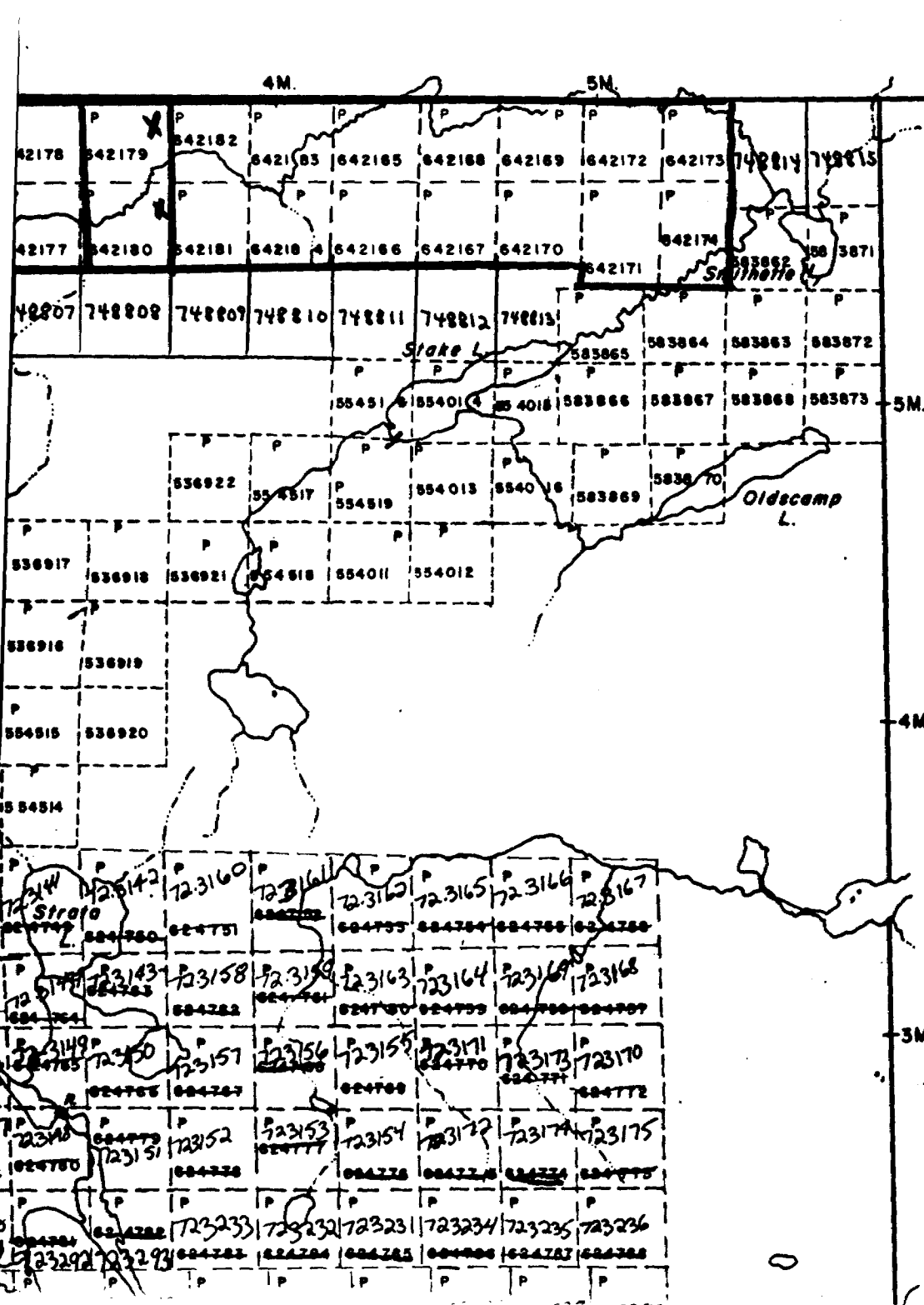
## LEGEND

PATENTED LAND  
CROWN LAND SALE  
LEASES  
LOCATED LAND  
LICENSE OF OCCUPATION  
MINING RIGHTS ONLY  
SURFACE RIGHTS ONLY  
ROADS  
IMPROVED ROADS  
KING'S HIGHWAYS  
RAILWAYS  
POWER LINES  
MARSH OR MUSKEG  
MINES  
CANCELLED  
PATENTED S.R.O.

M.  
S.P.

## NOTES

400' surface rights reservation along  
shores of all lakes and rivers.



GENOA, TWP. (M.833)

SCHEDULE OF CLAIMS

PROJECT 223

<u>Claim No.</u>	<u>Work Days Credit</u>	<u>Claim No.</u>	<u>Work Days Credit</u>
P.642155	56	P.642171	60
P.642156	60	P.642172	100
P.642157	16	P.642173	100
P.642158	56	P.642174	60
P.642159	56	P.642175	56
P.642160	16	P.642176	16
P.642161	60	P.642177	56
P.642162	56	P.642178	56
P.642163	56	P.642179	77
P.642164	16	P.642180	56
P.642165	56	P.642181	56
P.642166	16	P.642182	56
P.642167	16	P.642183	56
P.642168	56	P.642184	16
P.642169	56		
P.642170	60		