



41016SE0028 13 GENOA

010

Diamond Drilling

Township of GENOA

Report NO 13

Work performed by: Texasgulf

Claim NO	Hole NO	Footage	Date	Note
P 419689	G-62-1	331.0'	Mar/76	(1)
P 419687	G-62-2	625.0'	Mar/76	(1)
	G-62-3	272.0'	Mar/76	(1)
P 419688	G-62-4	479.0'	Mar/76	(1)
P 414967	G-62-5	378.0'	Mar/76	(1)

5/2085'

Notes:

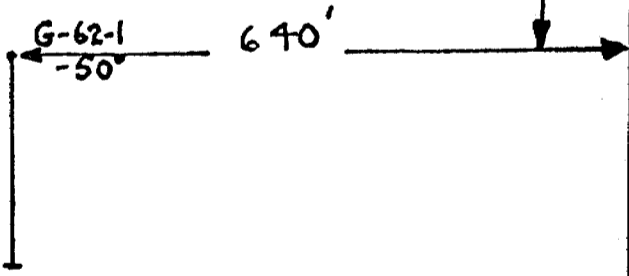
(1) #261-77



1" = 200'

P 419689

700'



Delaney

RUSH LAKE



1"=200'

P 4-19687

NORTH COTT
BAY

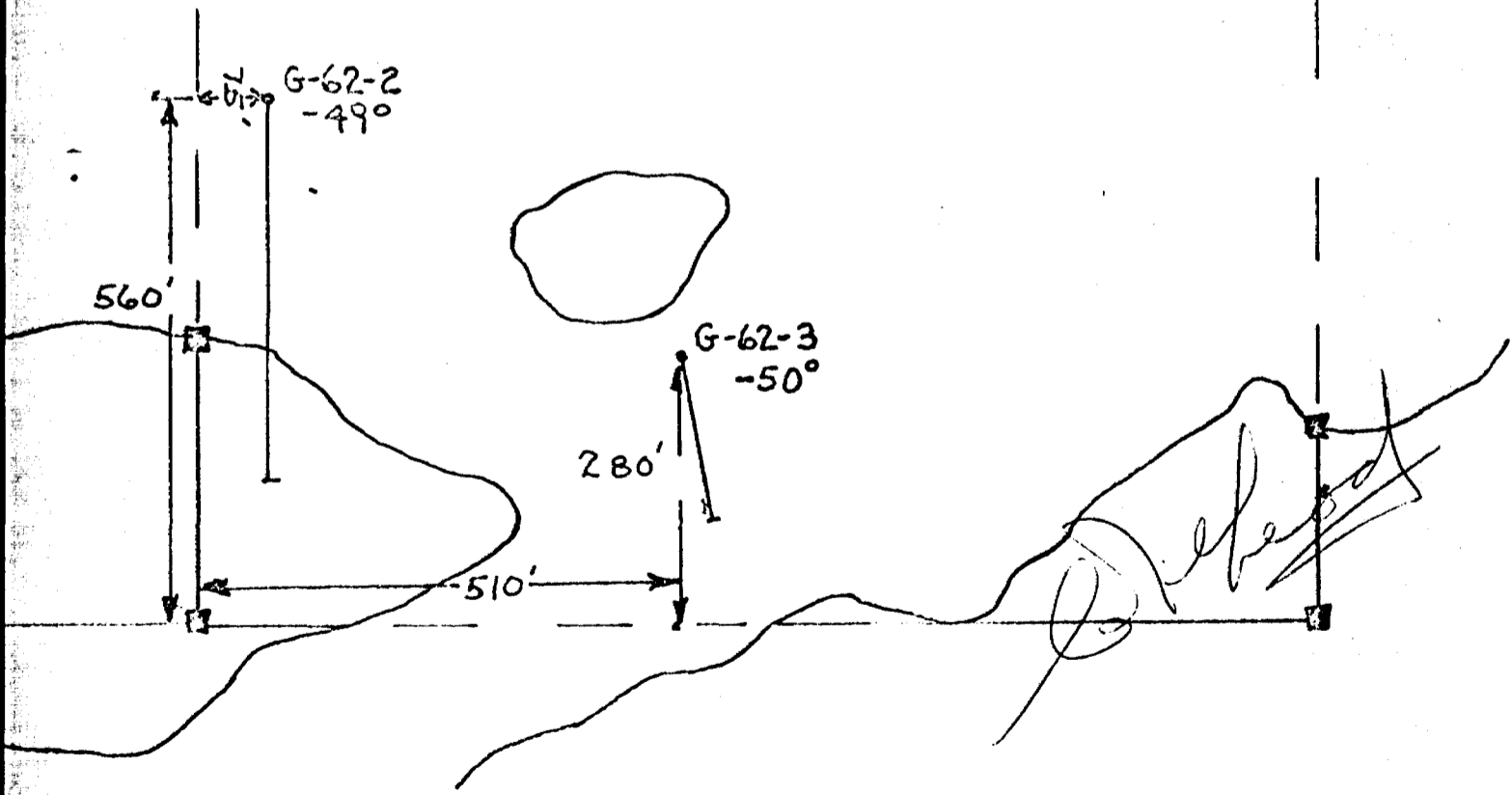
G-62-2
-49°

560'

280'

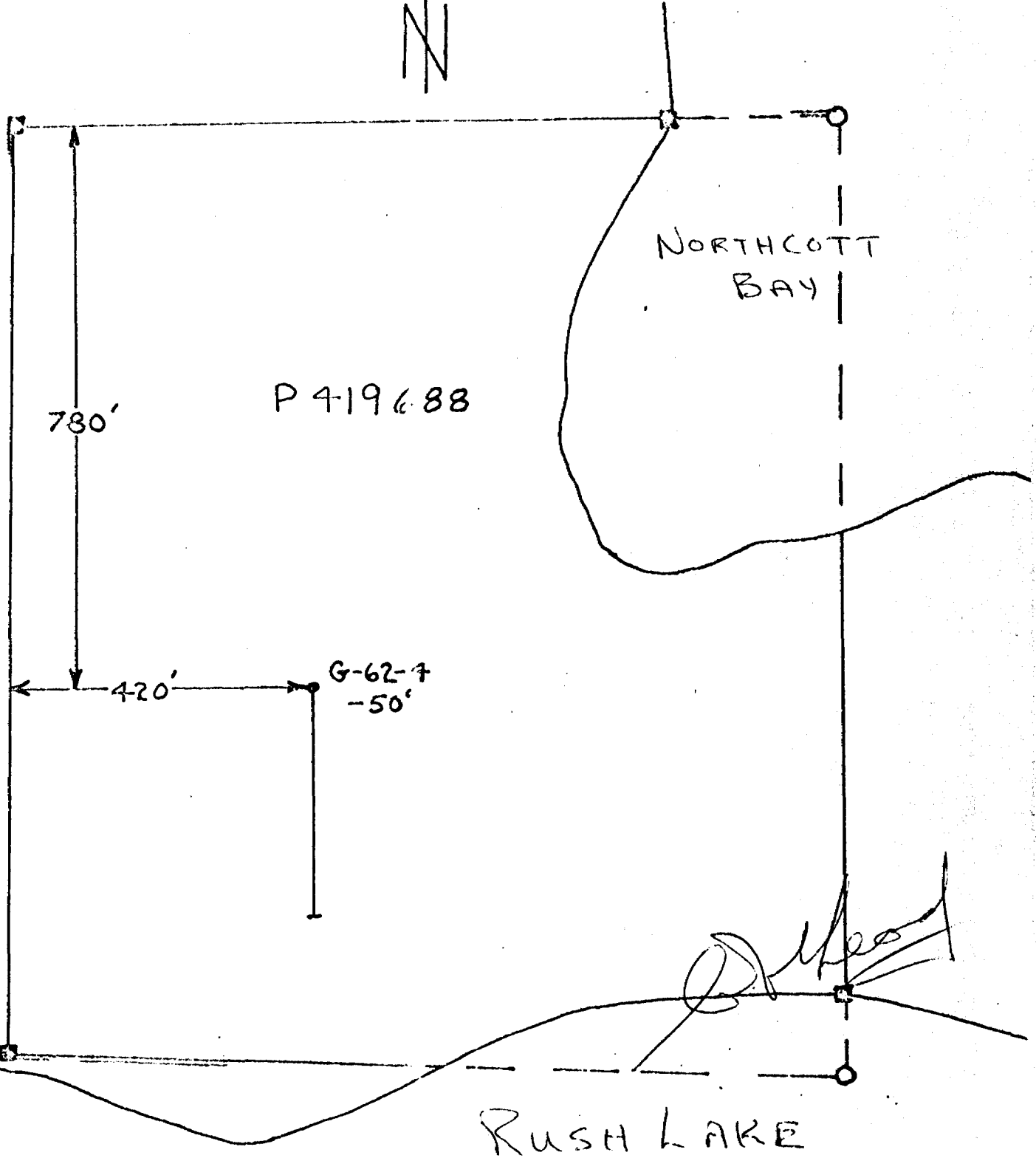
G-62-3
-50°

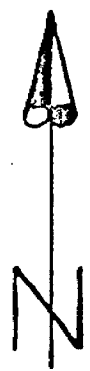
510'





1" = 200'





1" = 200'

NORTHCOTT
BAY

P 4-14-976

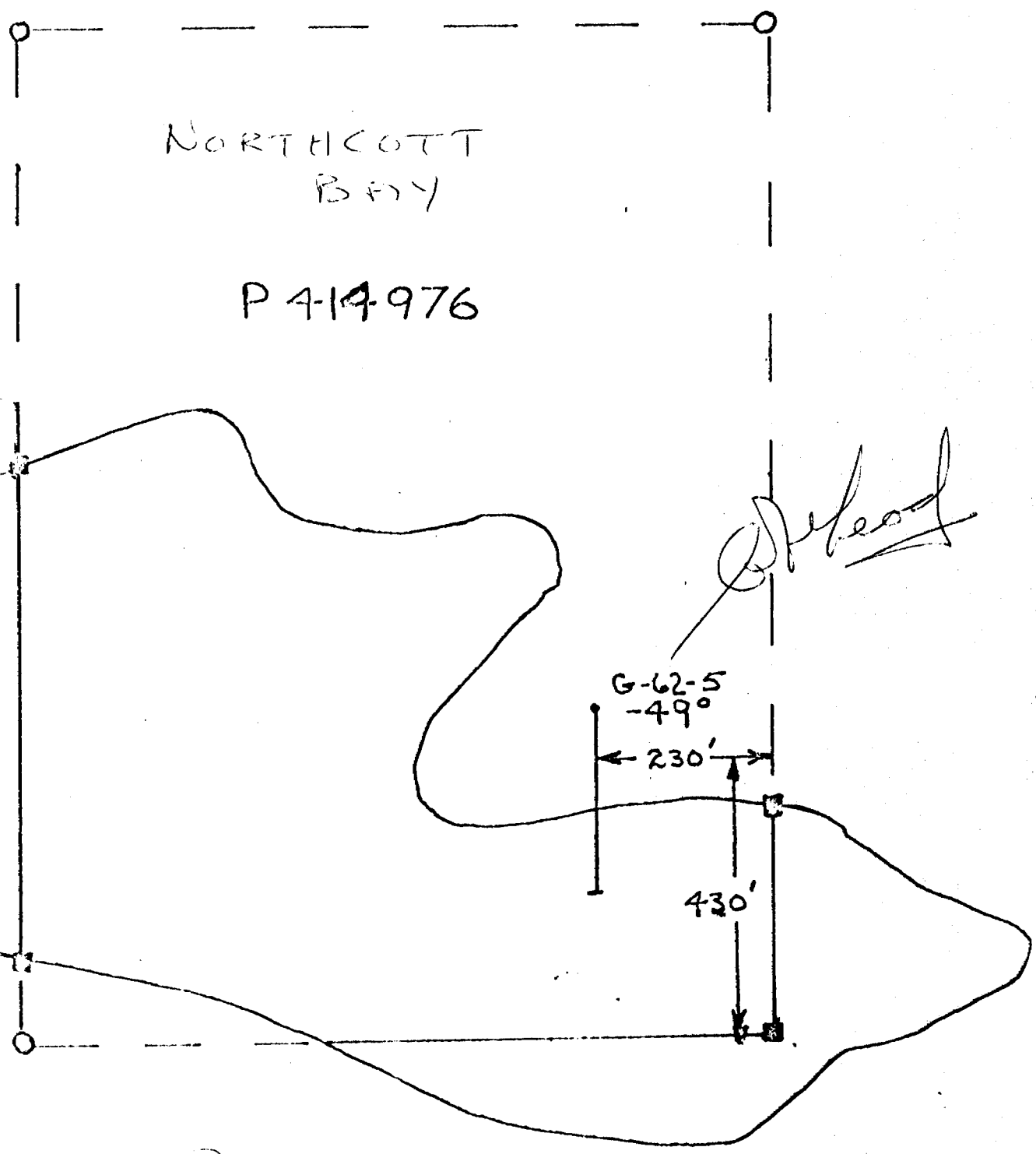
Deed

G-62-5
-49°

← 230' →

430'

RUSA LAKE

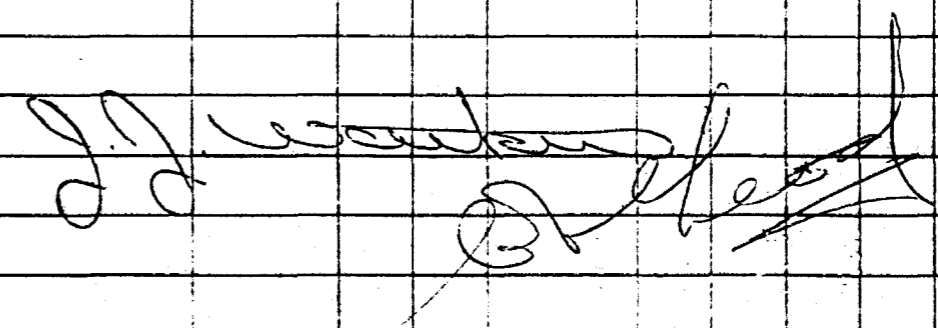


copy 1 of log 6/3/76
JE

PROPERTY Genoa 62 PROJECT 955 **TEARSGULF** CONTRACTOR Bradley Bros START 3/3/76 FINISH 6/3/76
 HOLE No. G-62-1 LAT. 7+50W DEP. 7+00S ELEV. _____ LOC. _____ AZ. 180 ANGLE 50° DEPTH 331 CASING 10

FROM - TO	DESCRIPTION	SAMPLE No.	FROM - TO	SAMPLE LENGTH	ASSAYS				AVERAGES AND REMARKS
					Cu	Zn	Pb	Ag	
0	10								
10	18.5								
18.5	30.5								
		3903	18.5	25	6.5	0.04	0.05	TR	Nil TR
		3904	25	30.5	5.5	0.08	0.08	TR	0.02 TR
30.5	110								

Bradley

FROM - TO	DESCRIPTION	SAMPLE No.	FROM-TO		SAMPLE LENGTH	ASSAYS				AVERAGES AND REMARKS	
						Cu	Zn	Pb	Ag		Au
	Sulphide: from 42 to 43 - 1% pyrrhotite, 2% chalcopyrite in massive magnetite	3905	41	44	3	0.46	0.03	TR	0.04	TR	
	from 57.5 to 68 - up to 40% pyrrhotite with sections running 1% chalcopyrite (section would average 0.5% chalcopyrite) in massive magnetite	3906	57.5	63	5.5	0.17	0.02	TR	0.02	TR	
	At 75-2cm vien of pyrrhotite with 1% chalcopyrite.										
	from 90 - 99 - minor fine disseminated chalcopyrite in amphibolite rich section.										
	At 101.5 = 2 cm vien at 80° to C.A., 50% pyrrhotite, 20% chalcopyrite.										
	From 105 to 110 - <0.5% chalcopyrite as fine disseminations in a magnetite argillite section.	3908	105	110	5	0.04	0.02	TR	Nil	TR	
110	331	AMPHIBOLITE BECOMING MORE FELDSPATHIC WITH DEPTH (GRANODIORITE): medium to coarse grained, gabbroic texture with interstitial feldspars, minor quartz, fairly massive and uniform.									
	Feldspar porphyry dikes from: 161 to 162, 173 to 173.5; 241.5 to 242.5; 246.5 to 247. Foliated feldspar porphyry from 298 to 307 - foliated at 40° to C.A.										
	Sulphides: from 120 to 137.5; up to 5% pyrrhotite with < 0.5% chalcopyrite in medium grained section.										
	331	END OF HOLE									
		Acid Test			Corrected						
		300'			-40°						
											
LOGGED BY: J.L. Watkins			DATE: 6/3/76			PROPERTY: Genoa 62			HOLE No: C-62-1		PAGE No: 2

PROPERTY GENOA 62PROJECT 955**YENASGULF**
NorthcottCONTRACTOR Bradley BrosSTART 8/3/76FINISH 10/3/76HOLE No. G-62-2 LAT. 21+00EDEP. 7+80SELEV. Bay

LOC. _____

AZ. 180°ANGLE -49DEPTH 625CASING 74

FROM - TO	DESCRIPTION	SAMPLE No.	FROM - TO	SAMPLE LENGTH	ASSAYS			AVERAGES AND REMARKS
0	74							
74	75.5							
75.5	88							
88	92.5							
92.5	99							
99	101							

LOGGED BY: J.J. Watkins DATE: 11/3/76PROPERTY Genoa 62HOLE No. G-62-2PAGE No. 1

Problem Page

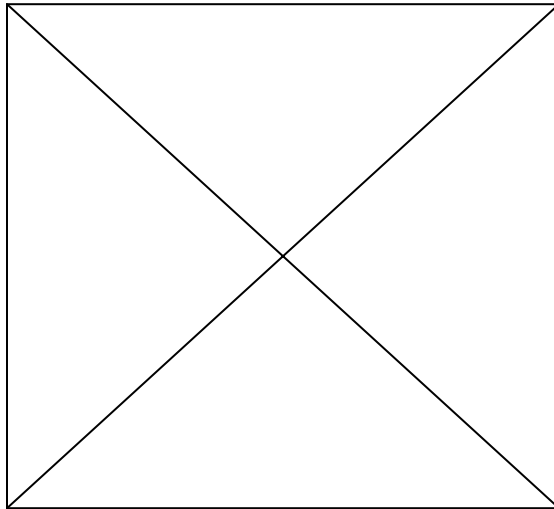
The original page in this document had a problem when scanned and as a result was unable to convert to Portable Document Format (PDF).

We apologize for the inconvenience.

Problème de conversion de page

Un problème est survenu au moment de balayer la page originale dans ce document. La page n'a donc pu être convertie en format PDF.

Nous regrettons tout inconvénient occasionné par ce problème.



Problem Page

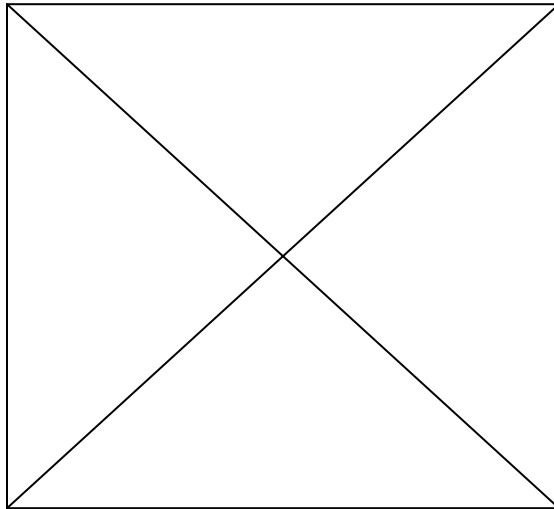
The original page in this document had a problem when scanned and as a result was unable to convert to Portable Document Format (PDF).

We apologize for the inconvenience.

Problème de conversion de page

Un problème est survenu au moment de balayer la page originale dans ce document. La page n'a donc pu être convertie en format PDF.

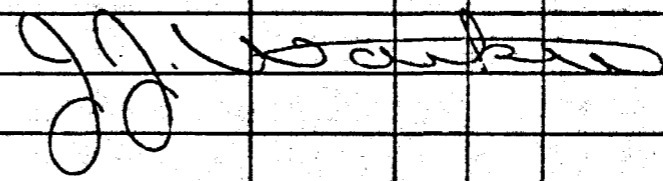
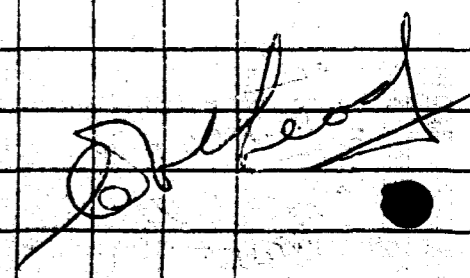
Nous regrettons tout inconvénient occasionné par ce problème.



FROM - TO	DESCRIPTION	SAMPLE No.	FROM - TO	SAMPLE LENGTH	ASSAYS				AVERAGES AND REMARKS
					Cu	Zn	Pb	Ag	
	becoming variable with depth								
	Sulphides: from 223.5 to 225.5 - 2% pyrite, <1% chalcopyrite, trace galena as fine stringers and disseminations.	3911	222.5	226	0.02	0.16	0.01	NIL	TR
	from 253.5 to 256 - 4% pyrite, <1% chalcopyrite as irregular chalcopyrite as irregular blotches	3912	253.5	256	0.01	0.02	0.01	NIL	TR
	Unit becomes garnetiferous with depth								
	Lower contact gradational								
273	279								
	BANDED CHERT: light grey, fairly well banded at 60° to C.A., narrow muscovite rich bands.								
	Sulphides: narrow stringers containing fine chalcopyrite at lower contact								
	Lower contact broken @ 70° to C.A.								
279	280								
	FELDSPAR PORPHYRY: as before								
	Lower contact broken.								
280	283								
	BANDED CHERT: as before								
	Sulphide: minor disseminated pyrite								
	Lower contact marked by 2" feldspar porphyry at 75° to C.A.								
283	495.5								
	FOLIATED GARNETIFEROUS TUFF: dark green, fine grained, fairly garnetiferous throughout, foliated throughout averaging 40-60° to C.A., several sections foliated at low angle to C.A., minor narrow banded sections of siliceous rich sediment, minor disseminated magnetite over narrow sections. Feldspar porphyry dikes from: 290 to 291, 298 to 299, 302 to 302.5, 304 to 306, 307 to 308.5, 315 to 315.5, 404.5 to 405								

D. Lee

FROM - TO	DESCRIPTION	SAMPLE No.	FROM - TO	SAMPLE LENGTH	ASSAYS				AVERAGES AND REMARKS
					Cu	Zn	Pb	Ag	
	Sulphides: minor disseminated pyrite throughout,								
	from: 383.7 to 387 - 5% pyrrhotite, 0.5% chalcopyrite occur fine disseminations and minor stringers.	3913	383.7 387		0.04	0.04	TR	NIL	TR
	from 387 to 414 - <1% disseminated pyrite and pyrrhotite, trace fine disseminated chalcopyrite.								
	Lower contact sharp and appears sheared 60° to C.A.								
495.5	513								
	GRANODIORITE: fairly uniform and massive, medium to coarse grained								
	Lower contact appear gradational over 2cm								
513	538								
	FOLIATED GARNETIFEROUS TUFF? as before								
	Feldspar porphyry dike with sharp contacts at 45° to C.A. from 516.5 to 517.5								
	Sulphides: minor disseminated pyrite								
	Lower contact broken at 80° to C.A.								
538	625								
	GRANODIORITE: massive and uniform, medium to coarse grained								
	Zenoliths of foliated basic tuff: from 541 to 544, 547 to 549, 580.5 to 582								
	Diabase from 619 to 619.5								
	625								
	END OF HOLE								
	ACID TESTS								
	300								- 40°
	600								- 33°

PROPERTY Genoa 62

PROJECT 955

TENAGULF

CONTRACTOR Bradley Bros

START 11/3/76 FINISH 12/3/76

HOLE No. G-62-3 LAT. 25+50E

DEP. 10+50S

ELEV. Bay LOC. Northcott

AZ. 170° ANGLE -50° DEPTH 272 CASING 48

FROM - TO	DESCRIPTION	SAMPLE No.	FROM-TO	SAMPLE LENGTH	ASSAYS				AVERAGES AND REMARKS
					Cu	Zn	Pb	Ag	
0	48								
48	69								
	INTERMEDIATE TUFF?: Medium grey, fine grained, weakly banded at 60° to C.A.								
	Sulphides -from 49.4 to 50: 10% pyrite-pyrrhotite occurring as nodular	3914	48	50	2	0.03	0.06	tr	0.10 tr
	-forms up to 1/2 cm in diameter	3915	50	57	7	0.02	0.15	0.04	Nil tr
	-from 50 to 69: 1-2% pyrrhotite with minor chalcopyrite in narrow bands parallel with primary banding.								
	Lower contact gradational								
69	77								
	BANDED CHERT: medium to light grey, recrystallized, well banded at 70° to C.A., minor sericite								
	Sulphides: 1% pyrite and pyrrhotite with minor chalcopyrite as fine irregular bands and stringers.								
	Lower contact gradational								
77	135.5								
	INTERMEDIATE TUFFS AND FLOWS: medium to dark grey green, fine grained section, well foliated @ 60° to C.A., becomes more siliceous with depth, recrystallized, fine amphibole developed.								
	Sulphides: minor pyrite								
	Lower contact gradational								
135.5	143								
	BANDED CHERT: as before, banded at 60- 70° to C.A.								

LOGGED BY: J.J. Watkins DATE: 16/3/76

PROPERTY Genoa 62

HOLE No. G-62-3 PAGE No. 1

FROM - TO	DESCRIPTION	SAMPLE No.	FROM-TO		SAMPLE LENGTH	ASSAYS				AVERAGES AND REMARKS
						Cu	Zn	Pb	Ag	
	Sulphides: 3-5% pyrite as fine stringers occupying zones up to 3cm wide	3916	138	143	5	0.05	0.04	tr	0.12	tr
	Lower contact broken									
143	147	FELDSPAR PORPHYRY DIKE: contacts broken at 80° to C.A.								
147	153	AMPHIBOLITE: dark green, weakly foliated at 70-80° to C.A.								
	Lower contact broken									
153	189	GRANODIORITE: massive, medium to coarse grained								
189	205	DIABASE DIKE: dark green, massive, uniform, fine grained, weakly magnetic.								
	Contacts broken									
205	272	GRANODIORITE: as before, xenolith of foliated amphibolite								
	from 248 to 250									
272	END OF HOLE									
	ACID TESTS									
		CORRECTED								
	272'	-45°								
<i>J.J. Watkins</i>										
<i>[Signature]</i>										

PROPERTY Genoa 62

PROJECT 955

TENAGULF

CONTRACTOR Bradley Brown START 3/3/76 FINISH 15/3/76

HOLE No. G-62-4 LAT. 3+00 E

DEP. 7+80S

ELEV. _____

LOC. _____

AZ. 180

ANGLE -50°

DEPTH 479

CASING 12

FROM - TO	DESCRIPTION	SAMPLE No.	FROM - TO	SAMPLE LENGTH	ASSAYS			AVERAGES AND		
					CU	ZN	PB	AG	AU	REMARKS
12	150.5									
	AMPHIBOLATIZED INTERMEDIATE TUFFS AND FLOWS: dark green, fairly uniform with banded sections, banded at 70-75° to C.A., lapilli stone section from 43.5 to 47., occasional irregular quartz carbonate stringer.									
	Sulphides: trace of disseminated pyrite									
150.5	183									
	BANDED CHERT: light grey with light green sericitic streaks throughout, well banded at 70-75° to C.A., narrow weakly carbonaceous sections.									
	Feldspar porphyry from 156.5 to 160.5									
	Basic dike? from 174 to 175 with broken contacts									
	Sulphides - from 150.5 to 152 : 2% disseminated pyrite									
	- at 154: 3cm band at 70° to C.A.									
	containing 5% diss. pyrite and trace of chalcopyrite									
	- at 155: coarse blotchy pyrite plus pyrrhotite									
	- at 163: 2 cm irregular band containing disseminated pyrite, minor chalcopyrite and fine metallic mineral?	3917	162	167	5	0.01	0.05	tr	nil	tr
	(not hematite, may be fine recrystallized graphite)	3918	167	172	5	tr	0.08	tr	nil	tr
	- from 164 to 165: three bands @ 70° to C.A. and up to 2 cm wide containing minor pyrite and chalcopyrite and									
	above unknown mineral which is probably graphite									

LOGGED BY: J.J. Watkins DATE: 18/3/76

PROPERTY Genoa 62

HOLE No. G-62-4 PAGE No. 1

FROM - TO	DESCRIPTION	SAMPLE No.	FROM - TO	SAMPLE LENGTH	ASSAYS				AVERAGES AND		
					CU	ZN	PB	AG	AV	REMARKS	
	- from 168.5 to 169: as above										
	- from 169 to 183: 1-2% diss and blotchy pyrite and pyrrhotite										
	Lower contact appears shear over 2cm at 50° to C.A.										
183	226	RECRYSTALLIZED INTERMEDIATE VOLCANIC? WITH SILICEOUS SEDIMENT BANDS: medium grey green, fine grained, uniform becoming less uniform with depth, siliceous sediment component increasing with depth.									
	Sulphides: from 190 to 193 - 5% pyrite as cubic dissemination and irregular blotches, trace of chalcopyrite. - at 200: 2 cm vien of very coarse grained pyrite	3919	190	193	3	0.03	0.10	0.01	nil	tr	
	- from 206 to 208: 2% blotchy cubic pyrite										
	Lower contact gradational										
226	252.5	BANDED CHERT: as before, with narrow magnetite bands									
	Sulphides: 1% disseminated pyrite and pyrrhotite with minor chalcopyrite throughout.										
252.5	303	INTERMEDIATE TUFF: medium grey green becoming darker with depth, fine grained, weakly foliated at 60° to C.A., amphibolitized and finely garnetiferous.									
	Feldspar porphyry dikes from 293 - 295										
	Sulphides: trace of disseminated pyrite										
	Lower contact gradational										
303	313	MAGNETITE IRON FORMATION: dark grey, fine grained, fine disseminated magnetite throughout (non massive magnetite)	3920	303	308	5	0.02	0.05	tr	nil	tr
	Sulphides: 1% diss. pyrite with trace of chalcopyrite										

Handwritten signature

LOGGED BY: J.J. Watkins DATE: 18/3/76

PROPERTY Genoa 62

HOLE No. G-62-4 PAGE No. 2

FROM - TO	DESCRIPTION	SAMPLE No.	FROM - TO	SAMPLE LENGTH	ASSAYS			AVERAGES AND REMARKS
	Lower contact broken 80° to C.A.							
313	479	GRANODIORITE: massive, medium to coarse grained.						
	479	END OF HOLE						
	ACID TEST	CORRECTED						
	300'	-45°						
<i>J.J. Watkins</i>								
<i>Enfield</i>								

LOGGED BY: J.J. Watkins DATE: 18/3/76

PROPERTY Genoa 62

HOLE No. G-62-4 PAGE No. 3

PROPERTY Genoa 62

PROJECT 955 **TENNESSEE GULF**

CONTRACTOR Bradley Bros START 6/3/76 FINISH 18/3/76

HOLE No. G-62-5 LAT. 18+00E

DEP. 9+00S ELEV. Bay LOC. _____

AZ. 180° ANGLE -49° DEPTH 378 CASING 80

FROM - TO	DESCRIPTION	SAMPLE No.	FROM-TO	SAMPLE LENGTH	ASSAYS			AVERAGES AND REMARKS
0	80							
80	180							
	PREDOMINANTLY BANDED SILICEOUS SEDIMENT WITH MINOR AMPHIBOLITE SECTIONS: medium to light grey, banded throughout at 45° to 70° to C.A., amphibolitized sections: from 99 to 105, 116 to 120 feldspar porphyry from: 84 to 86, 105.5 to 110, 134 to 135.5, 161 to 166, minor narrow bands of magnetite in siliceous host. Sulphides: minor to <1% as irregular blotches of pyrite Lower contact sharp at 80° to C.A.							
180	240.5							
	GRANODIORITE: typical, medium to coarse grained, large feldspar phenocrysts to 5mm Lower contact at 45° to C.A. and sharp							
204.5	320							
	BANDED SILICEOUS SEDIMENT: medium grey, fine grained, well banded at 80° to 45° to C.A. Granodiorite sections from: 205 to 205.5; 208.5 to 211; 287 to 288.5; 295 to 296.5 Feldspar porphyry sections from: 214 to 222, 284 to 285.5 Sulphides - from 251.5 to 261: 3% diss Py with <1% diss chalcopyrite as fine bands and blotches							
		3291	251.5 - 261	9.5				

Handwritten signature

LOGGED BY: J. J. Watkins DATE: 19/3/76

PROPERTY Genoa - 62

HOLE No. G-62-5 PAGE No. 1

