



41016SW0056 11 HEENAN

010

Diamond Drilling

Township of HEENAN

Report NO 11

Work performed by: Hollinger Mines Limited

Claim NO	Hole NO	Footage	Date	Note
P 443064	HEE-1-76	654.0'	Oct/76	(1)

Notes:

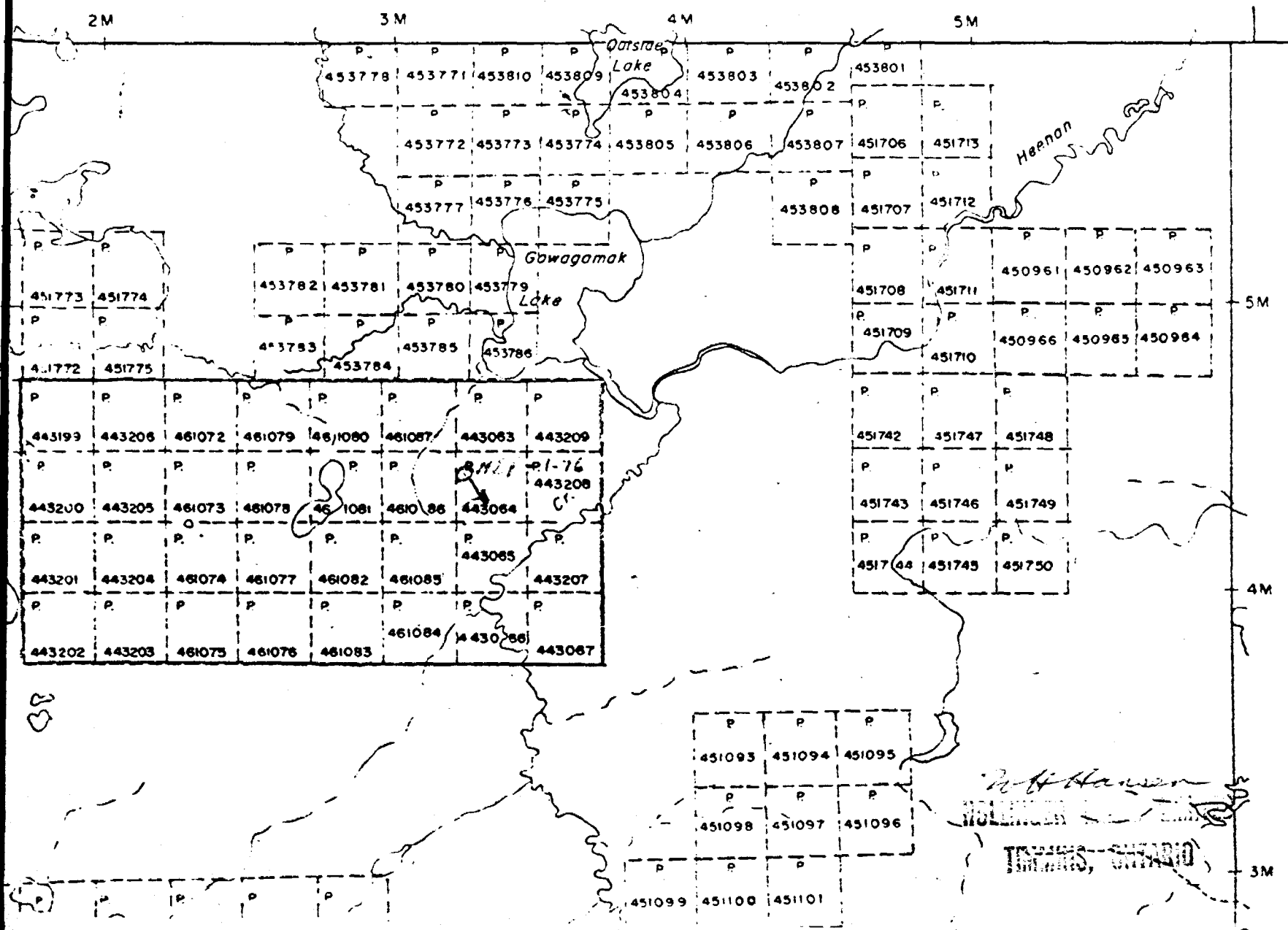
(1) #150-76

NEWTON TWP.

THE TOWNSHIP
OF

HEENAN

#150-76



PORCUPINE MINING DIVISION
RECEIVED
SEP 21 1976
AM 7 18 9 10 11 12 1 12 13 14 15 16 PM

DISTRICT OF
SUDBURY

PORCUPINE
MINING DIVISION

*up to date
as of Oct. 13/76*

SCALE: 1-INCH 40 CHAINS

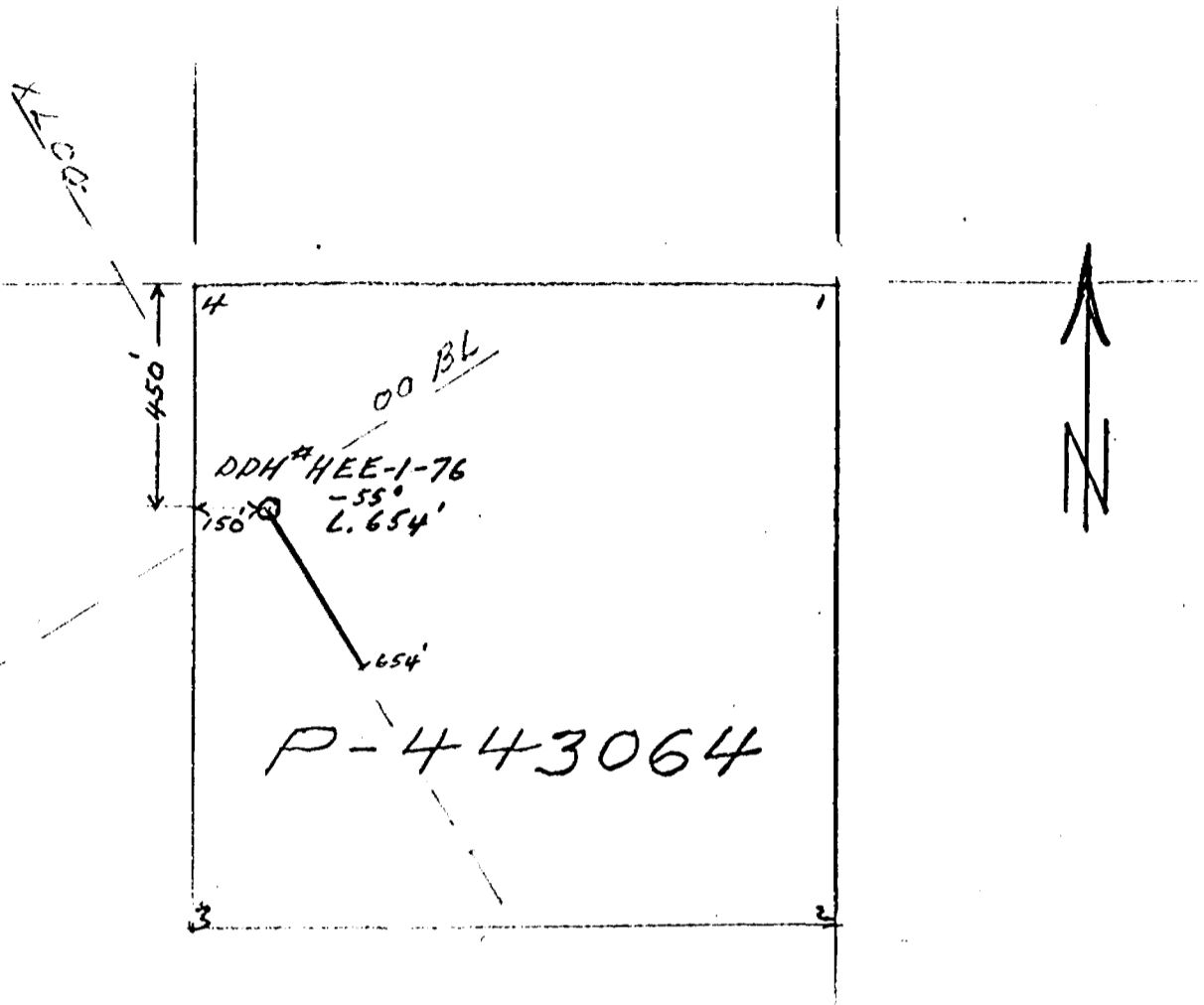
LEGEND

- PATENTED LAND
- CROWN LAND SALE
- LEASES
- LOCATED LAND
- LICENSE OF OCCUPATION
- MINING RIGHTS ONLY
- SURFACE RIGHTS ONLY
- ROADS
- IMPROVED ROADS
- KING'S HIGHWAYS
- RAILWAYS
- POWER LINES
- MARSH OR MUSKEG
- MINES
- CANCELLED



VP. M - 853

HEENAN, ONTARIO



Started - Oct. 29/76
 Finished - Nov. 5/76
 Dia. of Core - 1.44 in. (B.Q. Wire Line)
 Contractor - Bradley Bros. Ltd., Timmins, Ont.

PLAN OF DDH. # HEE-1-76
 Heenan #1 Group, Heenan Twp.
 Claim P-443064
 Scale - 1" = 400'

W. H. Hansen
 ENGINEER LIMITED
 TIMMINS, ONTARIO

FORM 522
 NORTH 0+00 B.L.
 EAST XL 00
 ELEV. Surface
 AZIM. 160° az. (True)
 DIP Collar @ -55°; 200' @ -53°

South 450
 East 150'
DIAMOND DRILL REPORT
 PROPERTY HEENAN #1, Heenan Township
 P-443064 BQ Core

HOLE NO. HEE-1-76
 COMMENCED Oct. 29, 1976
 FINISHED Nov. 5, 1976
 PURPOSE OF HOLE to test surface asbestos showing @ depth
 Drilled by: Bradley Bros.

FROM	TO	DESCRIPTION	CORE SAMPLES					DESCRIPTION OF SAMPLE
			FROM	TO	RECOV.	WIDTH	ASSAY	
0'	16'	CASING - Overburden.						
16'	194.9'	SERPENTINITE FLOW - fine-grained to very fine-grained; dark grey to blue-black; strongly magnetic; abundant spinifex throughout - usually well-developed, with 'olivine' blades up to 40 mm long at top, and up to 22 mm long @ about 140'; core is cut by numerous criss-crossing fractures - many of which are filled by narrow white and pale green carbonate-serpentine-chlorite stringers; from top to 140', the abundance of stringers and prevalence of low core angles (usually @ 30° to 40° to C.A.) for fracture planes renders the unit quite blocky - in fact, the core is very broken from 112' to 132' and there is some lost core; @ 83.2', there is a narrow (12 mm) stringer-breccia zone @ 35° to C.A. - also @ 87', 91.4', and 102.5' (25 mm wide, @ 65° to C.A.), @ 143.4' and 147'; from 144.8' to 194.9', the unit is much more massive, blue-black, and is cut by curving fractures characterized by black, possibly magnetite-rich						

DIAMOND DRILL REPORT

NORTH _____
 EAST _____
 ELEV. _____
 AZIM. _____
 DIP _____

PROPERTY HEENAN #1, Heenan Township

COMMENCED _____
 FINISHED _____
 PURPOSE OF _____
 HOLE _____

FROM	TO	DESCRIPTION	CORE SAMPLES					DESCRIPTION OF SAMPLE
			FROM	TO	RECOV.	WIDTH	ASSAY	
		centres (up to 3 mm wide), and greyish-white granular alteration rims (up to 2 mm wide) - the two dominant core angles of these fractures are 20° and 50°, but there are others; a few white carbonate seams are present @ 30° to C.A., as well as several zones of tight hairline carbonate stringers @ 55° to C.A. every 3 feet or so (within these zones - about 12 mm wide - are up to 20 separate parallel stringers);						
		- from 108' to 120', there is a section of strong breccia featuring subangular to subrounded ultrabasic fragments (up to 20 mm across) in a loose cement of magnetite, chlorite and carbonate; may be partly responsible for broken core in this section.						
		- from 163' to 164' is a very narrow stringer (0.75 mm wide) of asbestos @ 5° to 10° to C.A.						
		- from 167.7' to 183' are numerous narrow irregular white seams of asbestos fibre varying from 4 mm wide (@ 45° to C.A.) to about 0.5 mm wide (@ 35° or less to C.A.); the heaviest concentration of veinlets						

DIAMOND DRILL REPORT

NORTH _____
 EAST _____
 ELEV. _____
 AZIM. _____
 DIP _____

PROPERTY HEENAN #1, Heenan Township

COMMENCED _____
 FINISHED _____
 PURPOSE OF _____
 HOLE _____

FROM	TO	DESCRIPTION	CORE SAMPLES					DESCRIPTION OF SAMPLE
			FROM	TO	RECOV.	WIDTH	ASSAY	
		occurs from 169.5' to 172', with up to 5 separate veinlets in an individual zone 20 mm wide; overall fracture density varies from 5 to 10 per foot (true width) - of which perhaps 50% are asbestos-bearing.						
		- @ 194.7' - trace of very fine asbestos fibre.						
194.9'	208.8'	DUNITE - section of fine- to medium-grained, medium to light green, carbonatized peridotite or dunite; non-magnetic; cut by numerous narrow white carbonate-serpentine-brucite veinlets over upper 5 feet and basal 1 foot; smears and tiny blebs of chalcopyrite along black chloritic fractures throughout; lower contact quite sharp and distinct @ 60° to C.A.						
208.8'	285'	BRECCIATED to POLYSUTURED PERIDOTITE - - fine-grained; mottled green and black due to suspension of carbonatized medium to dark grey 'fragments' (up to 25 mm across) in a maze of black to banded white-green seams or sutures; moderately magnetic; fracture density is about 10 per foot; some of the fractures (especially						

DIAMOND DRILL REPORT

NORTH _____
 EAST _____
 ELEV. _____
 AZIM. _____
 DIP _____

PROPERTY HEENAN #1, Heenan Township

COMMENCED _____
 FINISHED _____
 PURPOSE OF _____
 HOLE _____

FROM	TO	DESCRIPTION	CORE SAMPLES					DESCRIPTION OF SAMPLE
			FROM	TO	RECOV.	WIDTH	ASSAY	
		from 250' to 255') are subparallel to the C.A.; there is some red hematitic staining along a few fractures; the unit is bleached(?) light grey from 274' to 277' and 282' to base.						
285'	292.8'	SERPENTINITE - similar to top of hole; spinifex throughout; 'olivine' blades up to 25 mm long; strongly to moderately magnetic; medium grey.						
292.8'	356.2'	SERPENTINIZED PERIDOTITE - fine-grained; dark grey to black; strongly magnetic; relatively massive with some green and white banded carbonate- serpentine veinlets throughout @ 30° to 40° to C.A.; lower contact sharp but indistinct; trace of asbestos fibre @ 339' as well as 3 mm wide fibrous serpentine veinlets @ 5° to C.A. @ 335'						
356.2'	406'	SERPENTINITE - similar to units above; spinifex throughout except for section from top to 361.5'; generally dark grey to blue-black except for section from top to 370.3' which is light grey to light grey-green; blue-black 'fragments' (up to 6 mm across; only moderately magnetic) are scattered through the light						

DIAMOND DRILL REPORT

NORTH _____
 EAST _____
 ELEV. _____
 AZIM. _____
 DIP _____

PROPERTY HEENAN #1, Heenan Township

COMMENCED _____
 FINISHED _____
 PURPOSE OF _____
 HOLE _____

FROM	TO	DESCRIPTION	CORE SAMPLES					DESCRIPTION OF SAMPLE
			FROM	TO	RECOV.	WIDTH	ASSAY	
		grey-green matrix from 359' to 361'; olivine blades up to 36 mm long at 368' with only slight decrease in length down-hole; lower contact sharp and distinct @ 20° to C.A. with a 75 mm wide zone of bleaching above the contact.						
406'	427'	DACITE - fine-grained; light grey-green; non-magnetic, and non-carbonatized except for numerous narrow white carbonate gash stringers throughout; traces of disseminated pyrite; locally chloritic						
427'	548.5'	DACITE 'FRAGMENTAL' (?) - fine-grained; light grey-green, subangular fragments (up to 30 mm across), some with serrated edges, medium- to widely-spaced in a dark grey-green cement; cut by numerous narrow white stringers and veinlets (probably mainly quartz) - usually containing traces of disseminated pyrite, pyrrhotite and some chalcopyrite. Blebs of pyrrhotite with traces of chalcopyrite are particularly noticeable @ 467.5', 488.3', 489', 493.6'. Quartz-carbonate veining is especially abundant from 481' to 490' and 515' to 521'; narrow breccia section with some pyrite @ 533.3'; the unit is						
			485'	490'		5'		5% to 7% strgrs; 2% to 3% po, tr.cp
			515'	518'		3'		5% to 10% strgrs; 2% to 3% po, tr.py, cr
			518'	520.6'		2.6'		" ; 3% to 5% po, cp
			520.6'	520.8'		0.2'		" ; "

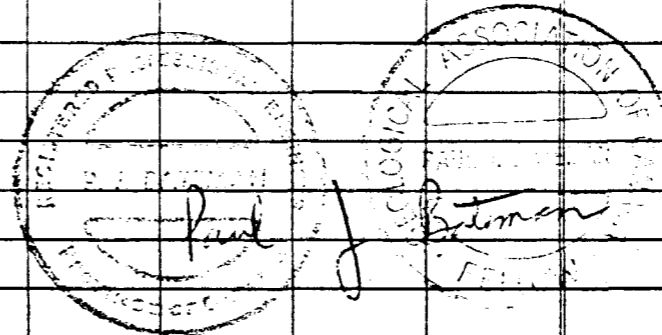
DIAMOND DRILL REPORT

NORTH _____
 EAST _____
 ELEV. _____
 AZIM. _____
 DIP _____

PROPERTY HEENAN #1, Heenan Township

COMMENCED _____
 FINISHED _____
 PURPOSE OF _____
 HOLE _____

FROM	TO	DESCRIPTION	CORE SAMPLES					DESCRIPTION OF SAMPLE
			FROM	TO	RECOV.	WIDTH	ASSAY	
		non-magnetic, generally non-carbonatized, and locally serpentinized along slips and fractures.						
548.5'	654'	SERPENTINITE FLOW - fine-grained; dark grey to blue-black; spinifex texture prominent throughout - with 'olivine' blades up to 18 mm long @ 560.5', up to 25 mm long @ 601', and up to 38 mm long @ 647'; cut by scattered narrow white and/or banded white-green carbonate-silica-brucite(?) - serpentine stringers; no indications of asbestos fibre; traces of chalcopryrite with stringer @ 635.3'; broken core from 612' to 622'; upper contact sharp but indistinct; unit is moderately to strongly magnetic.						
		E.O.H. - 654'						
		HOLLINGER MINES LIMITED TIMMINS, ONTARIO						



DIAMOND DRILL REPORT

NORTH _____
 EAST _____
 ELEV. _____
 AZIM. _____
 DIP _____

PROPERTY HEENAN #1, Heenan Township

COMMENCED _____
 FINISHED _____
 PURPOSE OF _____
 HOLE _____

FROM	TO	DESCRIPTION	CORE SAMPLES					DESCRIPTION OF SAMPLE
			FROM	TO	RECOV.	WIDTH	ASSAY	
		Grab Samples for Geochem						
		@ 18'						
		@ 58'						
		@ 90.5'						
		@ 136'						
		@ 169'						
		@ 202'						
		@ 238'						
		@ 273'						
		@ 312'						
		@ 336'						
		@ 365'						
		@ 390'						
		@ 408'						
		@ 427'						
		@ 452'						
		@ 475'						
		@ 500'						
		@ 530'						
		@ 560'						
		@ 600'						
		@ 635.3'						

DIAMOND DRILL REPORT

NORTH _____
 EAST _____
 ELEV. _____
 AZIM. _____
 DIP _____

PROPERTY HEENAN #1, Heenan Township

COMMENCED _____
 FINISHED _____
 PURPOSE OF _____
 HOLE _____

FROM	TO	DESCRIPTION	CORE SAMPLES					DESCRIPTION OF SAMPLE
			FROM	TO	RECOV.	WIDTH	ASSAY	
		Samples for Thin Section (Peter Price)						
		@ 20'						
		@ 50.5'						
		@ 80'						
		@ 110.5'						
		@ 144.5'						
		@ 171'						
		@ 202'						
		@ 211'						
		@ 247'						
		@ 282.5'						
		@ 314'						
		@ 348'						
		@ 368'						
		@ 408'						
		@ 447'						
		@ 475'						
		@ 500'						
		@ 533'						
		@ 560'						
		@ 596'						
		@ 622.5'						
		@ 654'						