

LINE CUTTING  
AND  
GEOPHYSICAL  
REPORT

BENTON TOWNSHIP, ON.  
PORCUPINE MINING DIVISION

by:  
RAYMOND LASHBROOK  
LASHEX LTD.  
AUG. 2004

2.282

PROVINCIAL RECORDING OFFICE - SUDBURY												
RECEIVED												
AUG 16 2004												
A.M. 4:10 pm P.M.												
7	8	9	10	11	12	1	2	3	4	5	6	



## TABLE OF CONTENTS

	<u>Page</u>
Introduction	1
Location and Access	1
Property	1,2
Previous Work	2
Regional Geology	2
Location Map	Fig. 1
Property Map	Fig. 2
Property Geology	3
Line Cutting	3
VLF Electromagnetic Survey	3,4,5
Conclusions	6
Recommendations	6
Statement of Qualifications	
<u>Back Pocket</u>	
I VLF Electromagnetic Map - Profiles, Values and Fraser Filter Contours	

INTRODUCTION

A program consisting of line cutting and a vlf electromagnetic survey was conducted on claims 3005871 and 3005872. This survey located four conductors. Previous airborne surveys picked up conductors in this area some of which have been explored and diamond drilled. It is concluded that these anomalies should be further investigated.

LOCATION and ACCESS

The property is located in the northeast corner of Benton Township and extends into the southeast part of Heenan Township, in the Swayze Greenstone Belt, Porcupine Mining Division, Ontario. The property can be accessed by travelling west on the Sultan Industrial Road located 35 kilometres south of Gogama on highway 144. At kilometre 54 the Dore road heads north and meets with highway 101. At kilometre 16 the Heenan logging road leads north-east and east for ~13 kilometres to a series of cut-over areas. The north side of the property is located just south of one of these areas.

PROPERTY

The property consists of a number of claims in Heenan and Benton Townships :

- 1199044 Heenan Twp.
- 3011886 " "
- 3004853 " "
- 3004858 " "
- 3005870 " "
- 3005871 Heenan and Benton Twps.
- 3005872 " " " "

This work was performed on claims 3005871 and 3005872.

The claims are recorded in the name of:

Raymond Lashbrook (50%)  
 973 Pine Creek Road S., R.R. #1

Callander, ON., POH 1H0  
and  
Mr. Angus MacDonnell  
P.O. Box 8  
Tilden Lake, ON. POH 2K0

### PREVIOUS WORK

The property has been subjected to work in the past mainly by:  
Weaco Resources Inc. 1986- airborne geophysics, line cutting,  
geology, geophysics, diamond drilling, assaying.

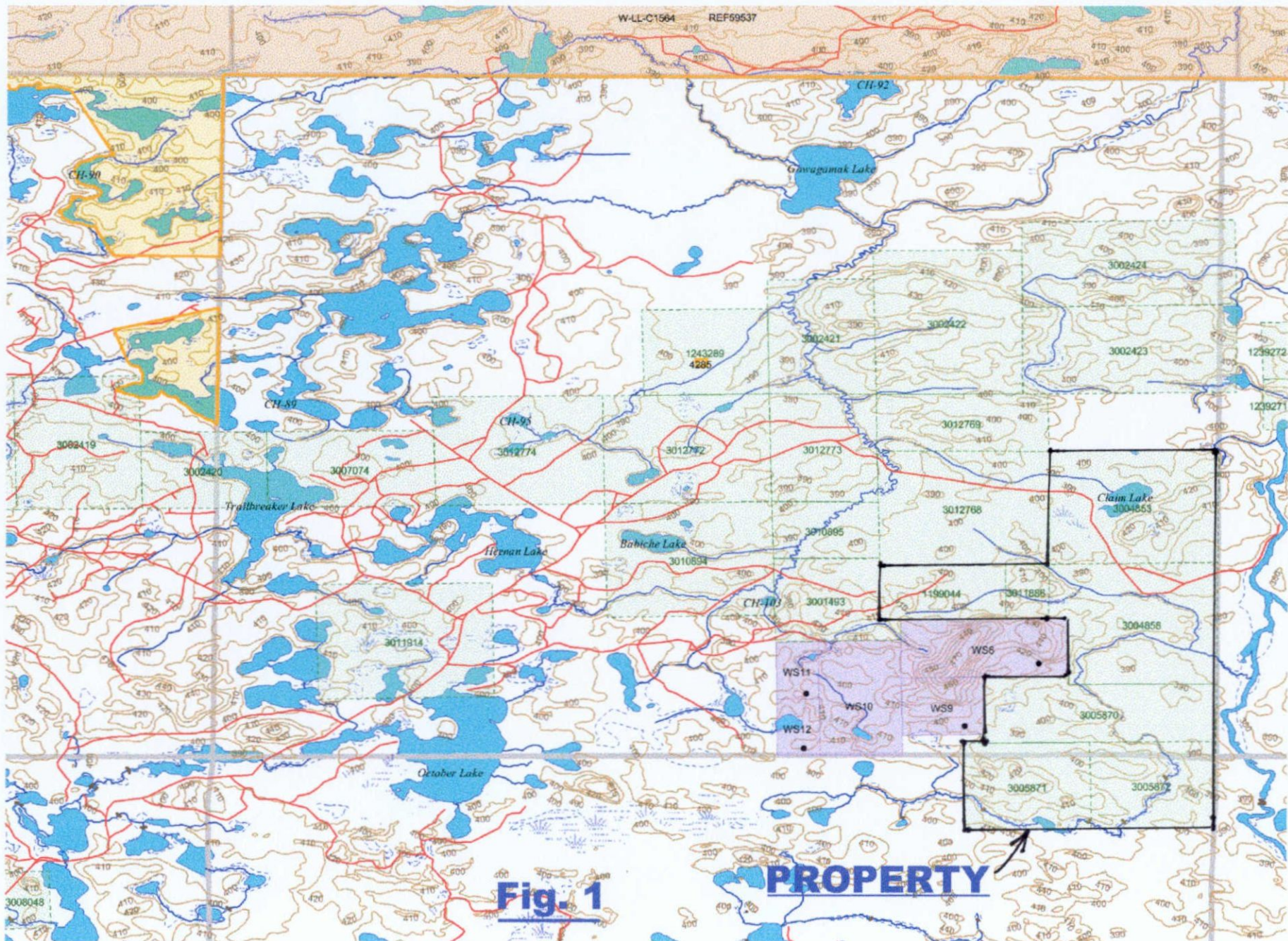
Raymond Lashbrook 1999 - Line cutting, geology, assaying, soil  
geochemistry.

The reader is referred to the assessment files at the Ministry of  
Northern Development and Mines in Sudbury for a complete record of  
work on the property.

### REGIONAL GEOLOGY

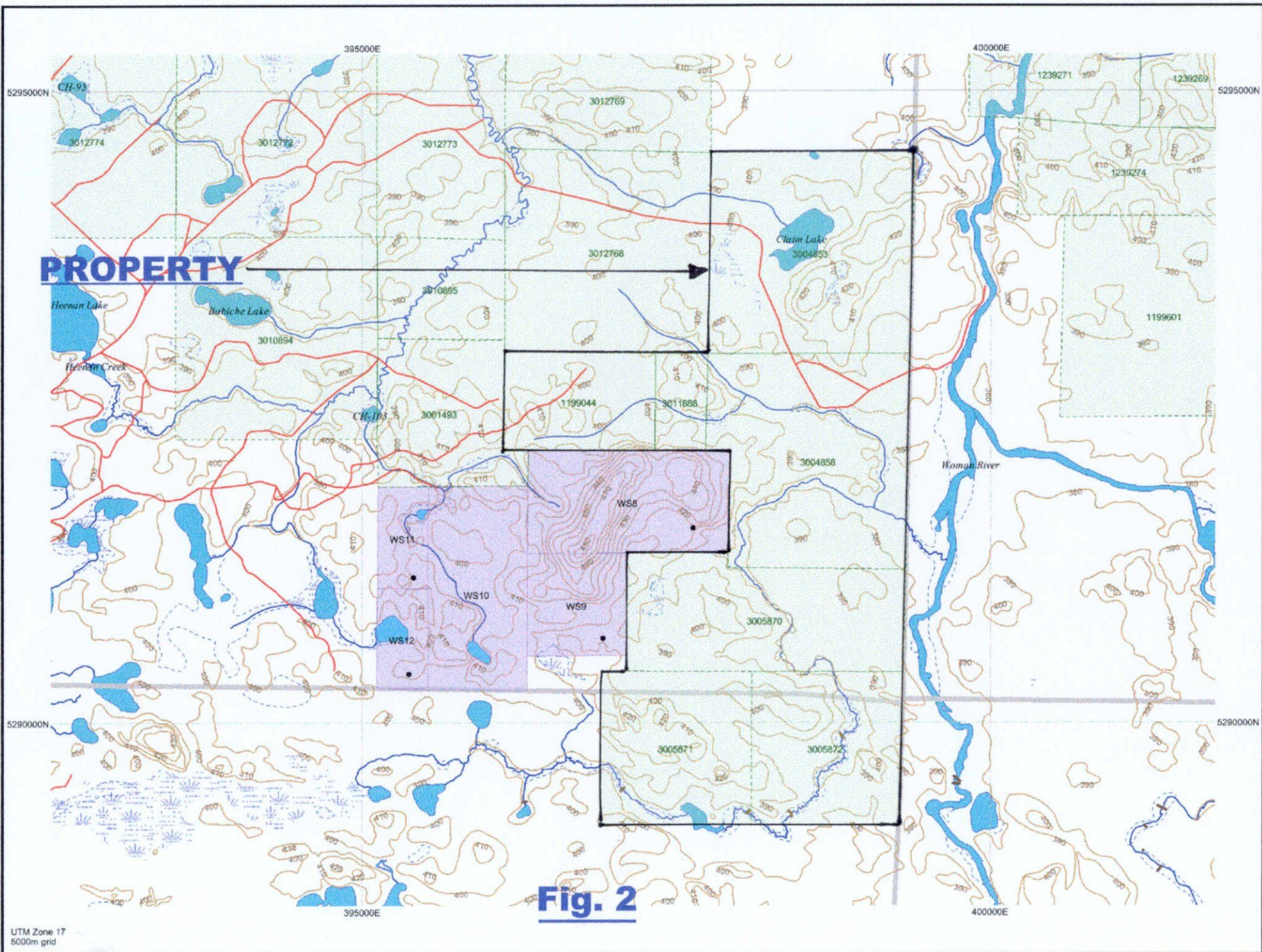
The property lies within the Swayze Volcanic Complex of the Abitibi  
Sub-province, which is the largest assemblage of Archean meta-  
volcanics and meta-sediments in the Canadian Shield. The east  
trending Swayze Belt is 25 kilometers wide at the eastern edge and  
74 kilometers long. It is terminated against the Kapuskasing  
Structural Zone by a north-south trending fault.

Recent re-mapping of the Swayze Belt by Kevin Heather, et al, has  
redefined the belt by age dating and stratigraphy. The mapping  
shows that the felsic meta-volcanics and the iron formation belong to  
the Marion Felsic Volcanic series while the mafic volcanics probably  
belong to the October Lake Mafic Volcanic series.



**Fig. 1**

**PROPERTY**



**Fig. 2**

## PROPERTY GEOLOGY

The property is located in the Swayze greenstone belt and is underlain by Marion Felsic to Intermediate Package, the Woman River Iron Formations and the October Lake Mafic to Ultramafic Package on the south limb of the Woman River antiform.

According to Heather this highly attenuated zone has resulted in the dislocation of the Woman River Iron Formation forming isolated boudins and in places a higher degree of alteration, i.e. quartz-sericite alteration of felsic volcanics.

On the property the rock units consist of intercalated felsic and mafic volcanics and related tuffs along with iron formation (chert, jasper, hematite, carbonate) mainly in the south side of the property.

## LINE CUTTING

A total of 11.050 kms. of baseline and crosslines were cut. The old grid was recut in order to take advantage of previous work. Lines were established every 100 metres along the baseline from 1000W to 400W were a mistake in the chaining resulted in L350W being cut and progressed down to 0+50W at 100 metre intervals. Crossline were run at 90 degrees to the baseline and chained at 25 metre intervals.

## VLF ELECTROMAGNETIC SURVEY

The survey was run using a Crone Radem using Cutler, Maine transmitting at a frequency of 24.0KHz as the station.

Readings were taken every 25 metres along the lines. The readings are recorded as 'S' or 'N'. On the map the south readings are given a negative sign and the north a positive sign. A conductor occurs between a negative on the north side and a positive on the south.

The accompanying map has the dip readings and profiles, and the calculated Fraser Filter values. A total of 9.050 kms. of grid was read.

The survey located 4 good conductors that can be traced across the grid. Other small conductors located during the survey are of probable surficial responses and will not be discussed further.

Conductor 'A' -

This conductor is located along the north end of the grid and appears separated into 2 parts. The western part is located from L900W, 225N to L700W, 325N and from L350W, 425N to L0+50W, 450N and off the grid to the east. On L150W this conductor is very strong giving a peak to peak readings of -34 to +26 and a fraser filter value of +82.

This is probably the western extension of a max-min anomaly drilled by Weaco resources that intersected disseminated to massive sulfides over 20.8 feet.

Conductor 'B'

This conductor is located from L1000W, 0+75N to L0+50W, 0+75N. The conductor exhibits good cross-overs with the best being on L600W with peak to peak responses of -20 to +26 and a corresponding fraser filter of +67. On lines 900 and 800W the conductor does not cross-over but is a strong inflection. This is due to the proximity of conductor 'A'.

The length and strength of the conductor indicates that it is probably caused from sulfides.

Conductors 'C' and 'D'

These conductors are located from L1000W, 300S, to L800W, 300S where it splits into north and south parts and continues off the grid to the east. The north part ('C') being L0+50W, 300S and the south



part ('D') being L0+50W, 400S. Conductor 'C' appears to be the stronger of the two. The strongest peak to peak response was on L800W being -22 to +20 with a corresponding fraser filter of +62. The airborne survey indicates numerous 2 to 5 channel anomalies within this area.

A drill hole by Weaco Resources to the south-east intersected disseminated pyrite and iron formation. It is probable that the anomalies are related to sulfide horizons within this sedimentary sequence.

## CONCLUSIONS

The geophysical survey conducted over this part of the property located four good conductors that appear to have merit.

Previous diamond drilling has located semi to massive sulfides on conductor 'A'. Further east in anomaly 'A' anomalous gold values to 0.024 ounces per ton in the semi-massive sulfide section and 0.09 ounces per ton over 5.5 feet a further 125 feet down the hole were intersected in W-86-2 by Weaco Resources Limited.

Anomaly 'C' and possibly 'D' were probably intersected in W-86-1 by Weaco Resources Limited.

## RECOMMENDATIONS

In view of the above positive survey it is recommended that a much larger exploration program be undertaken on this property. This should consist of line cutting, geophysics, geological mapping, stripping and sampling.

Ultimately a diamond drilling program will have to be carried out.

## STATEMENT OF QUALIFICATIONS

I, **Raymond L. Lashbrook**, do hereby declare:

- i) that I reside at: 973 Pine Creek Road South, R.R.#1  
Callander, Ontario, P0H 1H0
- ii) that I attended Haileybury School of Mines in the Two Year Mining Technician course from 1967 to 1969.
- iii) that I have been practicing my profession ever since.
- iv) that I have personal knowledge of the facts presented in this report.
- v) that I own a contract exploration company, Lashex Ltd., that performed the assessment work being submitted.
- vi) that I have 50% interest in the property.



Raymond L. Lashbrook  
Aug15, 2004



Date: 2004-AUG-26

GEOSCIENCE ASSESSMENT OFFICE  
933 RAMSEY LAKE ROAD, 6th FLOOR  
SUDBURY, ONTARIO  
P3E 6B5

ANGUS JOHN MACDONNELL  
BOX 8  
TILDEN LAKE, ONTARIO  
P0H 2K0 CANADA

Tel: (888) 415-9845  
Fax: (877) 670-1555

**Submission Number:** 2.28290  
**Transaction Number(s):** W0460.01296

Dear Sir or Madam

**Subject: Approval of Assessment Work**

We have approved your Assessment Work Submission with the above noted Transaction Number(s). The attached Work Report Summary indicates the results of the approval.

At the discretion of the Ministry, the assessment work performed on the mining lands noted in this work report may be subject to inspection and/or investigation at any time.

If you have any question regarding this correspondence, please contact STEVEN BENETEAU by email at [steve.beneteau@ndm.gov.on.ca](mailto:steve.beneteau@ndm.gov.on.ca) or by phone at (705) 670-5855.

Yours Sincerely,



Ron.C. Gashinski  
Senior Manager, Mining Lands Section

**Cc:** Resident Geologist

Raymond Levi Lashbrook  
(Agent)

Angus John Macdonnell  
(Claim Holder)

Assessment File Library

Raymond Levi Lashbrook  
(Claim Holder)

Angus John Macdonnell  
(Assessment Office)



41016SW2009 2.28290 HEENAN

200

ONTARIO  
CANADA

MINISTRY OF NORTHERN  
DEVELOPMENT AND MINES  
PROVINCIAL MINING  
RECORDER'S OFFICE

Mining Land Tenure  
Map

Date / Time of Issue: Thu Aug 26 09:47:54 EDT 2004

TOWNSHIP / AREA  
BENTON

PLAN  
G-3233

ADMINISTRATIVE DISTRICTS / DIVISIONS

Mining Division  
Land Titles/Registry Division  
Ministry of Natural Resources District

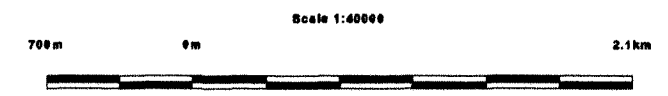
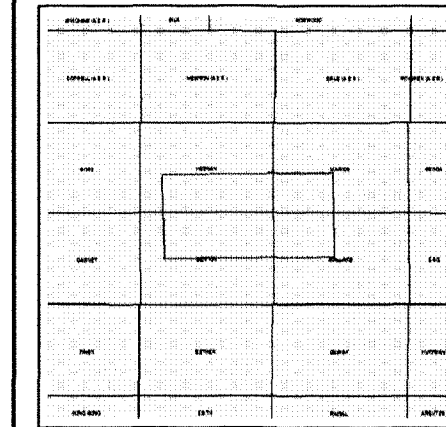
Porcupine  
SUDBURY  
CHAPLEAU

TOPOGRAPHIC

- Administrative Boundaries
- Township
- Concession, Lot
- Provincial Park
- Indian Reserve
- Clim. Pit & Pile
- Contour
- Mine Shafts
- Mine Headframe
- Railway
- Road
- Trail
- Natural Gas Pipeline
- Utilities
- Tower

Land Tenure

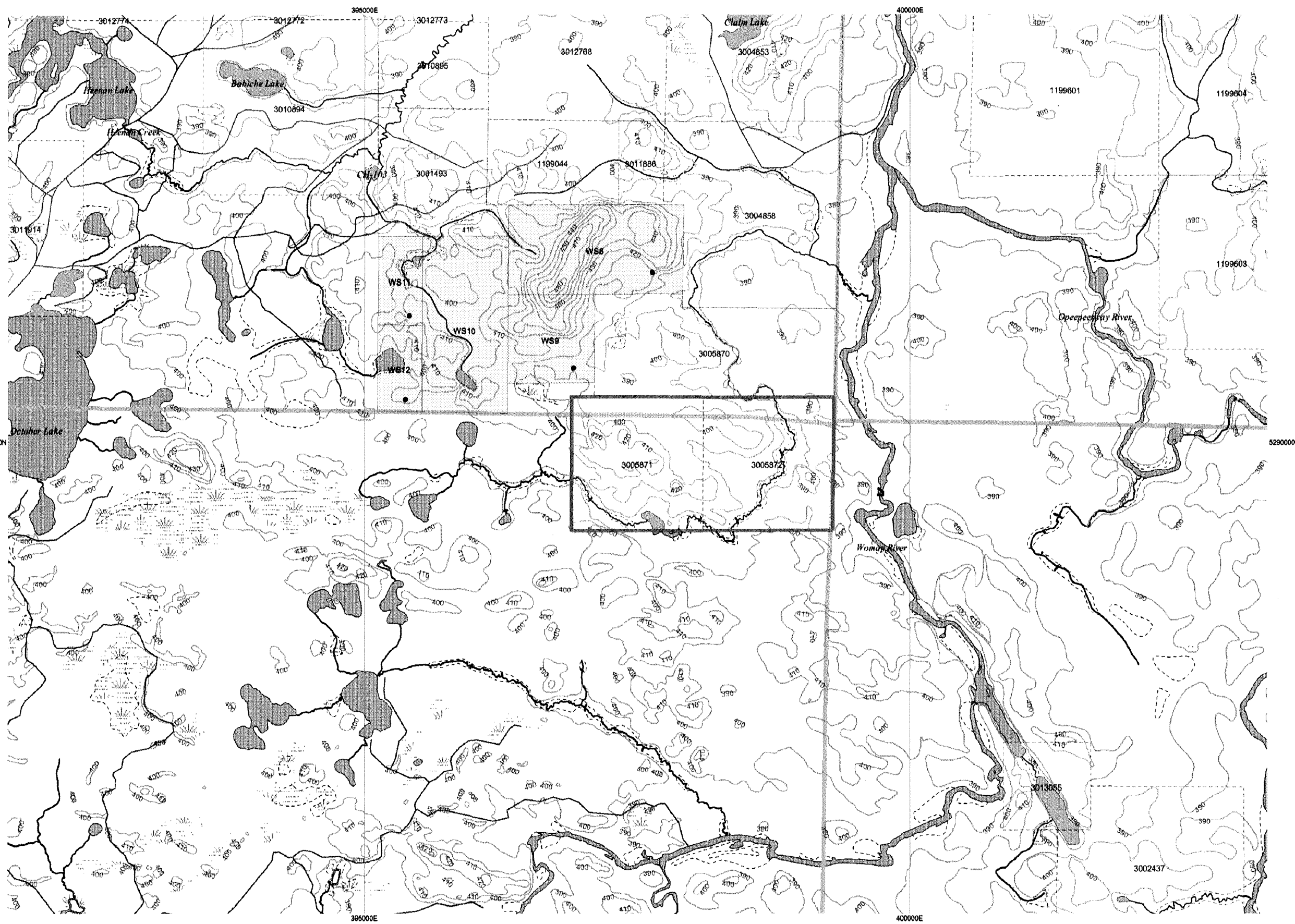
- Freehold Patent**
  - Surface And Mining Rights
  - Surface Rights Only
  - Mining Rights Only
- Leasehold Patent**
  - Surface And Mining Rights
  - Surface Rights Only
  - Mining Rights Only
- Licence of Occupation**
  - Uses Not Decided
  - Surface And Mining Rights
  - Surface Rights Only
  - Mining Rights Only
  - Land Use Permit
  - Order in Council (Not open for staking)
  - Water Power Lease Agreement
- Mining Claim**
  - 1234567
  - 1234567
- FLD ONLY Mining Claims**
  - 1234567
- LAND TENURE WITHDRAWALS**
  - 1234 Areas Withdrawn from Disposition
  - Mining Act Withdrawal Types
    - Wsm Surface And Mining Rights Withdrawn
    - Ws Surface Rights Only Withdrawn
    - Wm Mining Rights Only Withdrawn
  - Order in Council Withdrawal Types
    - Wsm Surface And Mining Rights Withdrawn
    - Ws Surface Rights Only Withdrawn
    - Wm Mining Rights Only Withdrawn
- IMPORTANT NOTICES**
  - Ns



LAND TENURE WITHDRAWAL DESCRIPTIONS

Identifier	Type	Date	Description
4285	Wsm	Jan 1, 2001	400 FT SURFACE RIGHTS RESERVATION AROUND ALL LAKES & RIVERS

2.28290  
VLF



Information shown is derived from digital data available in the Provincial Mining Recorders' Office at the time of downloading from the Ministry of Northern Development and Mines web site.

Information to stake mining claims should consult with the Provincial Mining Recorders' Office of the Ministry of Northern Development and Mines for additional information on the status of the lands shown hereon. This map is not intended for navigational, survey, or land title determination purposes as the information on this map is compiled from various sources. Completeness and accuracy are not guaranteed. Additional information may also be obtained through the Land Titles or Registry Office, or the Ministry of Natural Resources.

**General Information and Limitations**  
 Contact Information:  
 Provincial Mining Recorders' Office  
 Willat Green Miller Centre 933 Ramsey Lake Road  
 Sudbury ON P3E 8B5  
 Home Page: www.mndm.gov.on.ca/MNDMMINES/LANDS/mismnppg.htm

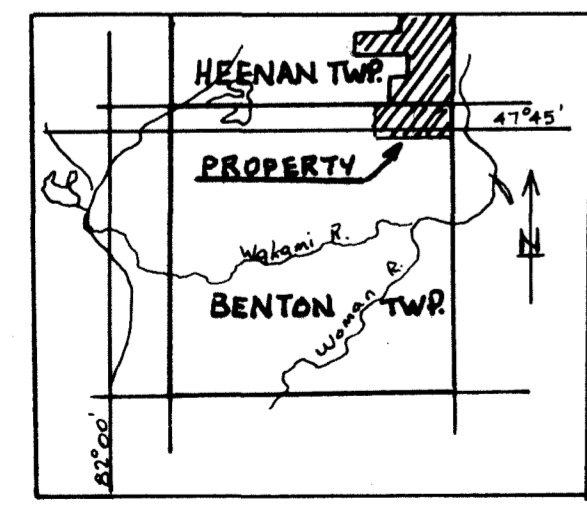
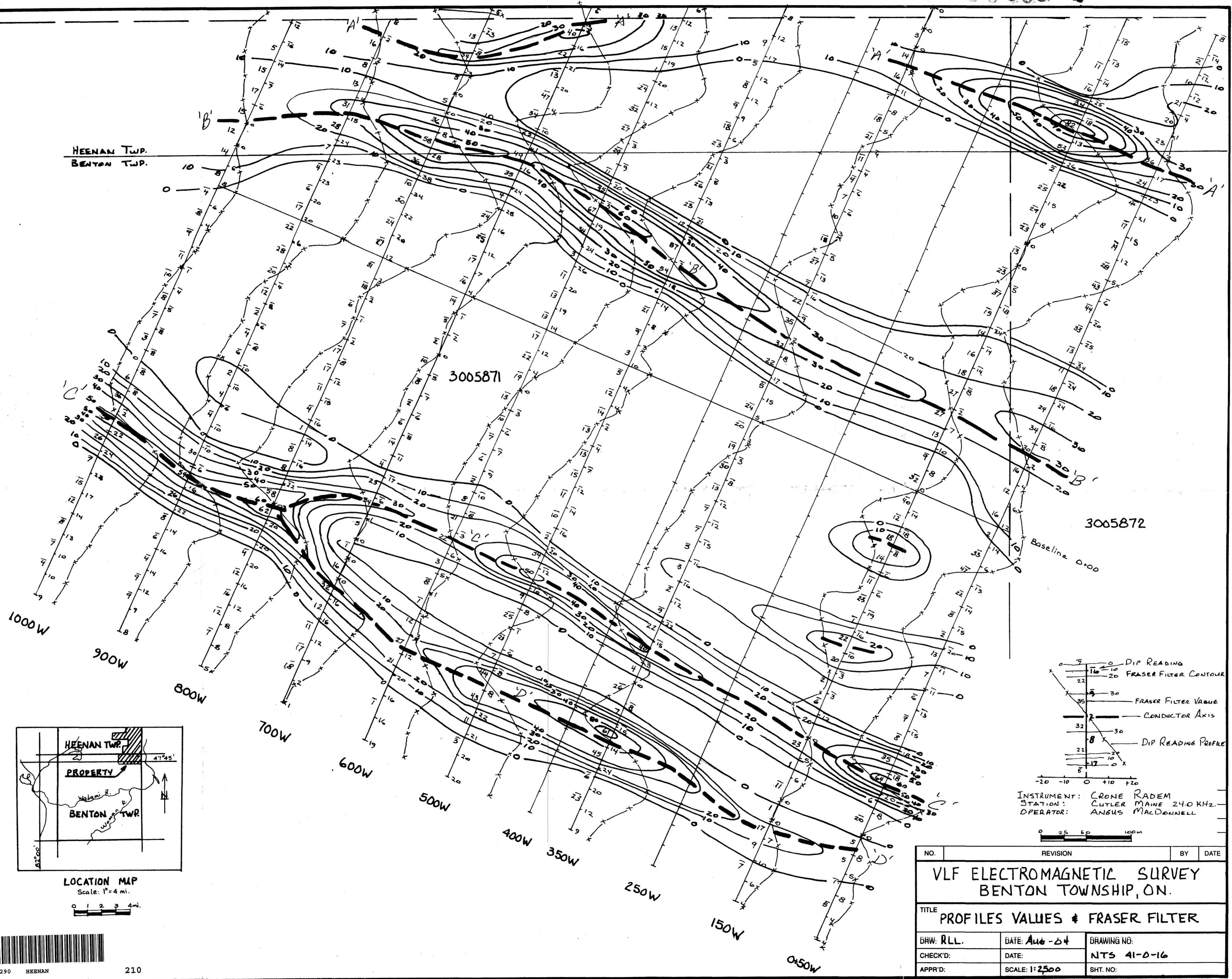
Toll Free  
 Tel: 1 (888) 415-9845 ext 57  
 Fax: 1 (877) 670-1444

Map Datum: NAD 83  
 Projection: UTM (6 degree)  
 Topographic Data Source: Land Information Ontario  
 Mining Land Tenure Source: Provincial Mining Recorders' Office

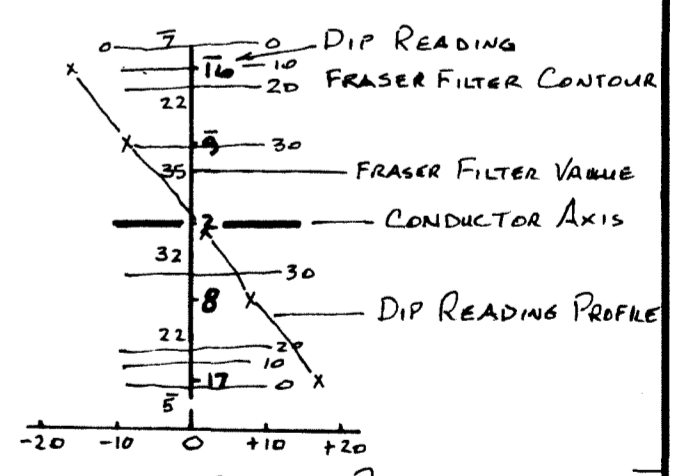
This map may not show unregistered land tenure and interests in land including certain patents, leases, easements, right of ways, flooding rights, licences, or other forms of disposition of rights and interest from the Crown. Also certain land tenure and land uses that restrict or prohibit free entry to stake mining claims may not be illustrated.



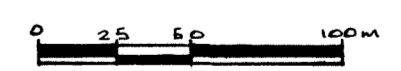
HEENAN TWP.  
BENTON TWP.



LOCATION MAP  
Scale: 1" = 4 mi.  
0 1 2 3 4 mi.



INSTRUMENT: CRONE RADEM  
STATION: CUTLER MAINE 24.0 KHZ.  
OPERATOR: ANSUS MACDONNELL



NO.	REVISION	BY	DATE
<b>VLF ELECTROMAGNETIC SURVEY BENTON TOWNSHIP, ON.</b>			
TITLE <b>PROFILES VALUES &amp; FRASER FILTER</b>			
DRW: RLL.	DATE: Aug-04	DRAWING NO:	
CHECK'D:	DATE:	NTS 41-0-16	
APPR'D:	SCALE: 1" = 2500	SHT. NO:	

