



41P01NE0002 12 CYNTHIA

010

## Diamond Drilling

Township of Cynthia

Report No: 12

Work performed by: Gunnex Ltd.

Claim No	Hole No	Footage	Date	Note
T 61491	G-1	51'	Feb/70	(1)
	G-2	186'	"	"
	G-3	61'	"	"
	G-4	66'	"	"
	G-5	102'	"	"
	G-6	114'	"	"
	G-7	163'	"	"
	G-8	62.5'	Mar/70	"
	G-9	101'	"	"
	G-10	106'	"	"

### Notes:

(1) 86/70

GUNNEX LIMITED.

D. D-Hole No. G-1

PROJECT A. HARDIE OPTION, CYNTHIA TWP. ONT.

Sheet No. 1

LOCATION Claim 614 91  
32+00N 1+96W

HOLE STARTED Feb. 13, 1970

HOLE COMPLETED Feb. 20, 1970

CORE RECOVERY +99 %

DRILLED BY Continental

LOGGED BY John Lill

SURVEY		
DEPTH	DIP	AZIMUTH

COLLAR. LAT. \_\_\_\_\_

DEP. \_\_\_\_\_

ELEV. 1174.5

AZIMUTH \_\_\_\_\_

DIP -90°

LENGTH 51.0'

HOR. PROJ. \_\_\_\_\_ VERT. PROJ. 51.0



FOOTAGE		DESCRIPTION.	SAMPLING				Au	Ag	Cu
FROM	TO		NO	FROM	TO	FEET			
0.0	6.0		Casing	10377	4.0	9.0			
4.0	14.0	Quartz carbonate - milky white, 80-90% qtz: 10-20% Carb. 4.0 - 6.0 barren qtz. carb. 6.0 - 7.0 banded px, py & minor cpy. in qtz. 20% sulphides 7.0 - 14.0 barren qtz. carb.; occasional f.g. dark inclusion 9.5 - 9.7 2 narrow seams of cpy & px. 13.5 vug.	10501	4.0	9.0	5.0	NIL	TR	0.25
			10502	9.0	14.0	5.0	NIL	NIL	0.07
14.0	51.0	Diabase 14.0 - 40.5 f.g. green; chloritic epidotized, scattered weak py. throughout, less than 0.5%. Drillers report 1' open seam at 15' 23.6 - 25.0 banded fine py with minor cpy in qtz. at 45° to C.A. 30.0 - 40.5 many irregular white qtz. seams at low angle and 11 to C.A. 42.0 - 45.0 bx. 50.0 - 51.0 diabase has pinkish cast End of G-1	10503	23.6	25.0	1.4	NIL	0.14	0.20
	51.0								

*John Lill*

GUNNEX LIMITED.

D. D-Hole No. G-2

PROJECT A. HARDIE OPTION CYNTHIA TWP. ONT.

Sheet No. 1

LOCATION Claim 61491

32+00N 1+00W

HOLE STARTED Feb. 20/70

HOLE COMPLETED Feb. <sup>21</sup>20/70

CORE RECOVERY +99 %

DRILLED BY Continental

LOGGED BY John Lill

SURVEY		
DEPTH	DIP	AZIMUTH

COLLAR. LAT. \_\_\_\_\_

DEP. \_\_\_\_\_

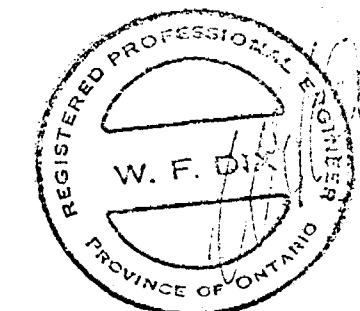
ELEV. 1162.0

AZIMUTH \_\_\_\_\_

DIP -90°

LENGTH 186.0

HOR. PROJ. \_\_\_\_\_ VERT. PROJ. 186.0



FOOTAGE		DESCRIPTION.	SAMPLING				Au	Ag	Cu
FROM	TO		NO	FROM	TO	FEET			
0.0	14.0		Casing						
10.0	20.4	Quartz carbonate - mostly milky white qtz. minor carb. 10.2 - 12.3 white qtz. minor carb. seams 12.3 - 15.3 scattered cpy. seams & blebs in white qtz. 15.3 - 20.4 mostly white qtz. 18.9 $\frac{1}{2}$ " py to cpy seam at 45° to C.A. 20.2 carb. vug.	10504	10.0	12.3	2.3	NIL	NIL	0.10
			10505	12.3	15.3	3.0	NIL	0.09	0.45
			10506	15.3	20.4	5.1	NIL	NIL	0.11
20.4	186.0	Diabase 20.4 - 22.7 dark, grey green, f.g. may be chilled section 31.0 - 33.0 qtz. carb. with py & minor cpy 43 diabase gradually becomes coarser, much epidote alteration to 50 Scattered weak py & cpy throughout, less than $\frac{1}{2}$ % sulphides 55.0 - 55.6 bx. 63.4 py & cpy stringer 76.2 $\frac{1}{2}$ " qtz. seam at 45° with specks of cpy.	10507	31.0	33.0	2.0	NIL	0.28	0.08

*John Lill*

FOURAGE		DESCRIPTION	SAMPLING								
FROM	TO		NO.	FROM	TO	FEET					
136.0		81.9 1" cpy & py in 3" qtz. filled bx. 116.5 splash cpy & py. End of G-2									

*PRZ*

GUNNEX - LIMITED.

D. D-Hole No. G-3

PROJECT A. HARDIE OPTION

Sheet No. 1

CYNTHIA TWP. ONT

LOCATION Claim 61491

32+00N Base Line

HOLE STARTED Feb. 22/70

HOLE COMPLETED Feb. 23/70

CORE RECOVERY +99 %

DRILLED BY Continental

LOGGED BY J. Lill

SURVEY		
DEPTH	DIP	AZIMUTH

COLLAR. LAT. \_\_\_\_\_

DEP. \_\_\_\_\_

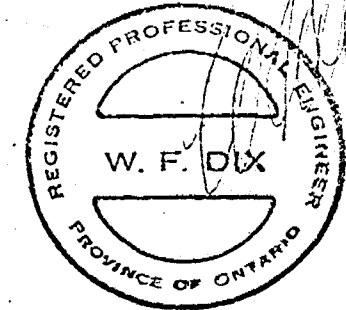
ELEV. 1170

AZIMUTH \_\_\_\_\_

DIP -90°

LENGTH 61.0

HOR. PROJ. 0 VERT. PROJ. 61.0'



FOOTAGE		DESCRIPTION.	SAMPLING				Au	Ag	Cu
FROM	TO		NO	FROM	TO	FEET			
0.0	16.0	Casing							
16.0	25.6	Argillite - grey green, f.g. sil, incipient banding (bedding) at 80° to C.A.							
25.6	42.0	Diabase - m.g., epidotized							
		33.7 - 34.1 f.g., green, talcose dyke?, contacts at 60° to C.A.							
		36.2 - 36.5 Qtz. feldspar, minor py.							
42.0	45.1	Breccia zone - Qtz. frags in green f.g. matrix							
		43.5 - 45.0 scattered weak py. & spy.	10508	43.0	45.0	2.0	NIL	0.16	0.25
45.1	55.8	Qtz. cb - milky white with scattered sulphides throughout							
		45.5 - 46.0 large blebs cpy. & py. 15% sulphides	10509	45.0	46.0	1.0	0.14	1.14	2.15
		46.0 - 51.0 80% Qtz., occasional small bleb cpy.	10510	46.0	51.0	5.0	NIL	0.15	0.18
		50.6 rust filled vug.							
		51.0 - 55.8 Scattered blebs cpy. & py. 2% sulphides	10511	51.0	55.8	4.8	NIL	0.11	0.35
55.8	-61.0	Diabase - epidotized							
	61.0	End of G-3							

*J. R. Lill*

GUNNEX LIMITED.

PROJECT A. HARDIE OPTION  
CYNTHIA TWP. ONT

D. D-Hole No. G-4  
 Sheet No. 1

LOCATION Claim 61491  
31+08N 3+00W

HOLE STARTED Feb. 23/70

HOLE COMPLETED Feb. 24/70

CORE RECOVERY +99 %

DRILLED BY Continental

LOGGED BY J. Lill

SURVEY		
DEPTH	DIP	AZIMUTH

COLLAR. LAT. \_\_\_\_\_

DEP. \_\_\_\_\_

ELEV. 1191

AZIMUTH \_\_\_\_\_

DIP -90°

LENGTH 66'

HOR. PROJ. 0 VERT. PROJ. 66'



FOOTAGE		DESCRIPTION.	SAMPLING			
FROM	TO		NO	FROM	TO	FEET
0.0	8.0	Casing				
7.0	45.0	Diabase - m.g. many fine irregular epidote stringers 9.0 - 11.6; 14.6 - 15.6 much rust 14.0 1/2" epidotized qtz. vein at 20° to C.A. 43 - 45 core becomes fg				
45.0	47.5	Breccia - qtz. epidote frags. in dark f.g. matrix (f.g. diabase)				
47.5	60.3	Qtz. cb. zone - milky white barren qtz. carb., scattered f.g. dark inclusions 54.6 - 55.2, 56.4 - 56.8 - diabase				
60.3	66.0	Diabase - m.g., scattered irregular narrow qtz. cb. stringers throughout 64.0 - 64.1 white qtz.				
	66.0	End of G-4				

*J. Lill*

GUNNEX LIMITED.

PROJECT A. HARDIE OPTION  
CYNTHIA TWP. ONT

D. D-Hole No. G-5

Sheet No. 1

LOCATION Claim 61491

32+00N 3+00W

HOLE STARTED Feb. 24/70

HOLE COMPLETED Feb. 25/70

CORE RECOVERY +99 %

DRILLED BY Continental

LOGGED BY J. Lill

SURVEY		
DEPTH	DIP	AZIMUTH

COLLAR. LAT. \_\_\_\_\_

DEP. \_\_\_\_\_

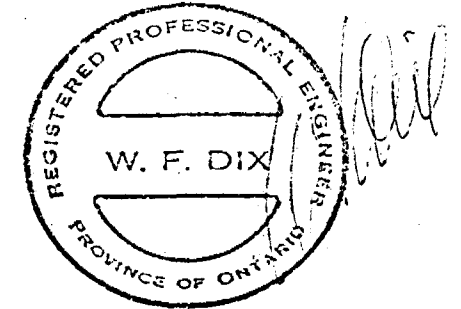
ELEV. 1199

AZIMUTH \_\_\_\_\_

DIP -90°

LENGTH 70' 10"

HOR. PROJ. 0 VERT. PROJ. \_\_\_\_\_



FOOTAGE		DESCRIPTION.	SAMPLING				AU	AG	CU	NI
FROM	TO		NO	FROM	TO	FEET				
0.0	4.0	Casing								
3.0	66.2	Diabase - m.g.								
66.2	70.0	Argillite - f.g., grey, cut by irregular narrow white qtz. stringers.								
	70.0	End of G-5								
70.0	71.0	G-5 Deepened March 6, 1970								
71.0	82.0	Breccia - white qtz. frags in grey sil matrix								
		Quartz - carbonate								
		71.0 - 76.0 weak scattered sulphides - pg. & cpy. less than 1% sulphides except from 72.8 - 73.2 1/2" mass. pyr. with minor cpy. seam ll to CA	10512	71.0	76.0	5.0	NIL	Trace	0.02	0.01
		76.0 - 78.2 greywacke with white qtz.								
		78.2 - 82.0 qtz. carb. with many dark inclusions								
82.0	83.7	Greywacke - fine banding at 50° to CA								

*J. Lill*

FOOTAGE		DESCRIPTION	SAMPLING								
FROM	TO		NO.	FROM	TO	FEET					
83.7	88.1	Diabase - some greywacke - epidote seaming									
88.1	93.4	Greywacke - upper contact 40° to CA. 91.0 hematite thread at 40° to CA									
93.4	102.0	Diabase - much epidote threading									
	102.0	End of G-5									

*J R Z*



GUNNEX-LIMITED.

D. D-Hole No. G-6

PROJECT A. HARDIE OPTION

Sheet No. 1

LOCATION Claim 61491

33+00N 3+00W

HOLE STARTED Feb. 25/70

HOLE COMPLETED Feb. 26/70

CORE RECOVERY +99 %

DRILLED BY Continental

LOGGED BY J. Hill

SURVEY		
DEPTH	DIP	AZIMUTH

COLLAR. LAT. \_\_\_\_\_

DEP. \_\_\_\_\_

ELEV. 1199

AZIMUTH \_\_\_\_\_

DIP -90°

LENGTH 82.0 / 114.0'

HOR. PROJ. 0 VERT. PROJ. \_\_\_\_\_



FOOTAGE		DESCRIPTION.	SAMPLING			
FROM	TO		NO	FROM	TO	FEET
0.0	4.0	Casing				
4.0	71.0	Diabase - lower contact at 70°				
71.0	76.5	Argillite - grey green f.g. mass.				
76.5	78.7	Quartz cb. zone - 90% qtz. dark green argillite inclusions				
78.7	82.0	Argillite as above				
	82.0	End of G-6				
		G-6 deepened March 5, 1970				
82.0	92.1	Greywacke - fine banding at 50° to CA				
		82.1 - 82.2 fine cpy in qtz.				
92.1	114.0	Diabase - some epidote threading				
	114.0	End of G-6				

*J. Hill*

GUNNEX LIMITED.

PROJECT A. HARDIE OPTION, CYNTHIA LAKE, ONT.

D. D-Hole No. C-7

Sheet No. 1

LOCATION Claim 61491

33°00N 24°00W

HOLE STARTED Feb. 26/70

HOLE COMPLETED Mar 5/70

CORE RECOVERY +99 %

DRILLED BY Continental

LOGGED BY J.R. Lill

SURVEY		
DEPTH	DIP	AZIMUTH

COLLAR. LAT. \_\_\_\_\_

DEP. \_\_\_\_\_

ELEV. 1193.5

AZIMUTH -

DIP -90°

LENGTH 163'

HOR. PROJ. 0' VERT. PROJ. 163'



FOOTAGE		DESCRIPTION.	SAMPLING							
FROM	TO		NO	FROM	TO	FEET				
0.0	4.0	Casing								
2.0	34.0	Diabase - c.g.								
34.0	41.7	Greywacke - f.g.								
41.7	47.6	35.0 - 37.0 scattered diss. py to cpy., less than 1% sulphides								
47.6	49.0	Diabase								
49.0	53.0	Quartz epidote								
53.0	62.9	Greywacke - dark green, fine banding at 70° to CA., weak diss. py. throughout.								
62.9	79.1	Quartz carbonate - 50% milky white Qtz., 40% dark f.g. inclusions, (greywacke) 10% carb.								
79.1	163.0	Greywacke - lower contact at 45° to C.A.								
		75.5 - 76.5 milky white Qtz.								
		Diabase - c.g.								
		137.4 fine cpy.								
		End of C-7								

*J. R. Lill*

GUNNEX LIMITED.

D. D-Hole No. G-8

PROJECT A. HARDIE OPTION, CYNTHIA TWP. ONT.

Sheet No. 1

LOCATION Claim 61491

31+00N 1+00W

HOLE STARTED March 6/70

HOLE COMPLETED March 6/70

CORE RECOVERY +99 %

DRILLED BY Continental

LOGGED BY J.R. Lill

SURVEY		
DEPTH	DIP	AZIMUTH

COLLAR. LAT. \_\_\_\_\_

DEP. \_\_\_\_\_

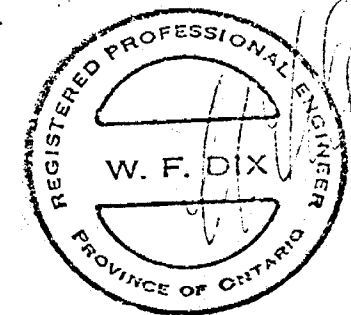
ELEV. 1164.5

AZIMUTH \_\_\_\_\_

DIP -90°

LENGTH 62'

HOR. PROJ. 0 VERT. PROJ. 62'



FOOTAGE		DESCRIPTION.	SAMPLING							
FROM	TO		NO	FROM	TO	FEET				
0.0	4.0	Casing								
3.0	7.7	Diabase								
7.7	15.0	Quartz breccia - fine dark angular frags in grey qtz. matrix occasional speck py.	No	Samples	Taken					
15.0	17.5	Argillite? f.g. grey, incipient banding								
17.5	62.5	Diabase - c.g.								
	62.5	End of G-8								

*J.R. Lill*

GUNNEX LIMITED.

D. D-Hole No. G-9

PROJECT A. HARDIE OPTION, CYNTHIA TWP., ONT.

Sheet No. 1

LOCATION Claim 61491  
31+04N Base Line

HOLE STARTED Mar. 6/70

HOLE COMPLETED Mar. 7/70

CORE RECOVERY +99 %

DRILLED BY Continental

LOGGED BY J.R. Lill

SURVEY		
DEPTH	DIP	AZIMUTH

COLLAR. LAT. \_\_\_\_\_

DEP. \_\_\_\_\_

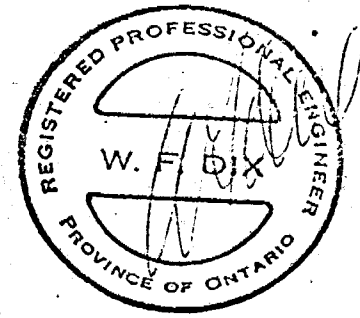
ELEV. 1166.5

AZIMUTH \_\_\_\_\_

DIP -90°

LENGTH 101.0

HOR. PROJ. 0 VERT. PROJ. 101



FOOTAGE		DESCRIPTION.	SAMPLING			
FROM	TO		NO	FROM	TO	FEET
0.0	12.0	Casing	No Samples Taken			
6.5	7.7	Diabase				
7.7	10.0	Greywacke? mass f.g. grey sil				
10.0	35.5	Diabase - 33.0, 1 foot lost core				
35.5	47.0	Argillite - dark green, f.g., mass. 38.0 - 40.0 bx.				
47.0	101.0	Diabase 47.0 - 48.0 broken core with some hematite seams 53.5 - 54.1 white qtz.				
	101.0	End of G-9				

*J.R. Lill*

GUNNEX LIMITED.

D. D-Hole No. G-10

PROJECT A. HARDIE OPTION, CYNTHIA TWP. ONT.

Sheet No. 1

LOCATION Claim 61491

33400N Base Line

HOLE STARTED March 8, 1970

HOLE COMPLETED March 10, 1970

CORE RECOVERY 49%

DRILLED BY Continental

LOGGED BY John R. Lill

SURVEY		
DEPTH	DIP	AZIMUTH

COLLAR. LAT. \_\_\_\_\_

DEP. \_\_\_\_\_

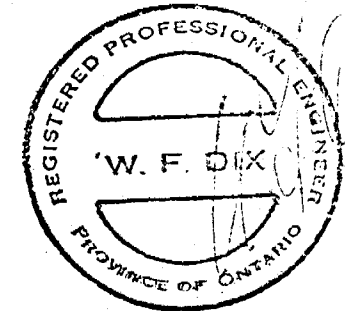
ELEV. 1170.0

AZIMUTH \_\_\_\_\_

DIP 30°

LENGTH 106'

HOR. PROJ. \_\_\_\_\_ VERT. PROJ. \_\_\_\_\_

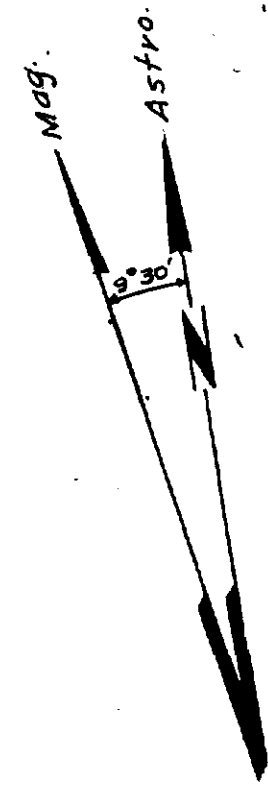


FOOTAGE		DESCRIPTION.	SAMPLING			
FROM	TO		NO	FROM	TO	FEET
0.0	14.0	Casing				
6.0	24.0	Greywacke - dark grey, very f.g., mass, occasional speck pyrite, becomes slightly lighter at 20 and much irregular hairline seaming.				
24.0	66.0	Diabase - contact with above indistinct				
66.0	69.0	24.5 - 1/8" pink qtz. seam at 50° containing specks cpy. Fault zone - 66 - 68 qtz. bx. cemented with carb. & chlorite. 67 1/2" hematite seam at 70° 67.8 bleb fine mass py.				
69.0	78.8	68.0 - 68.3 - 1/4" gouge ll to C.A. 68.3 - 69.0 chloritized and hematized bx. Diabase				
78.8	84.5	75 - 80 becomes f.g. Quartz carbonate - upper contact at 25°				
84.5	106.0	83.5 - 84.5 much chlorite seaming Diabase - 84.5 - 86.0 f.g. 85.5 white qtz. seam at 65° to C.A.				

*John R. Lill*

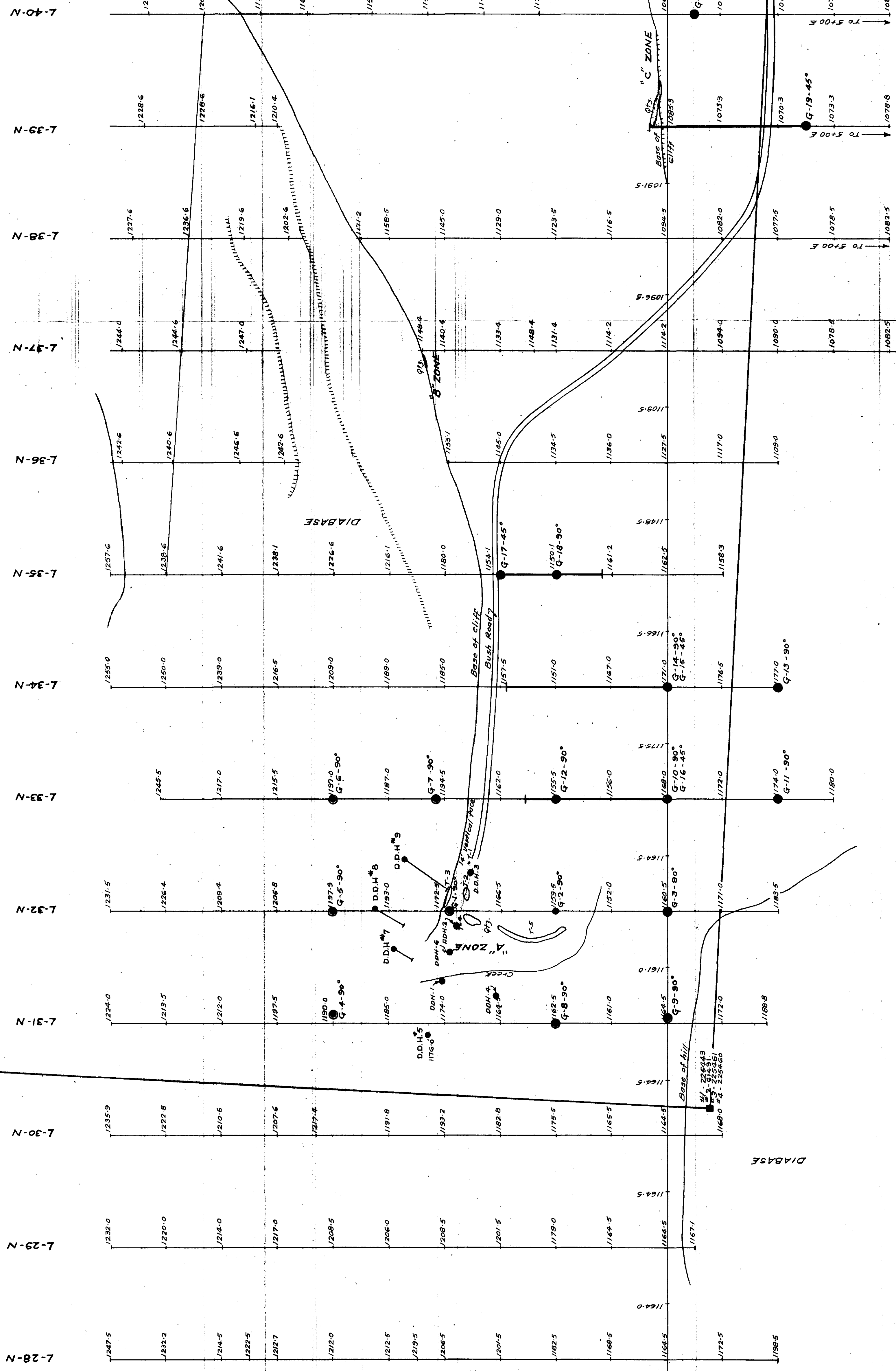
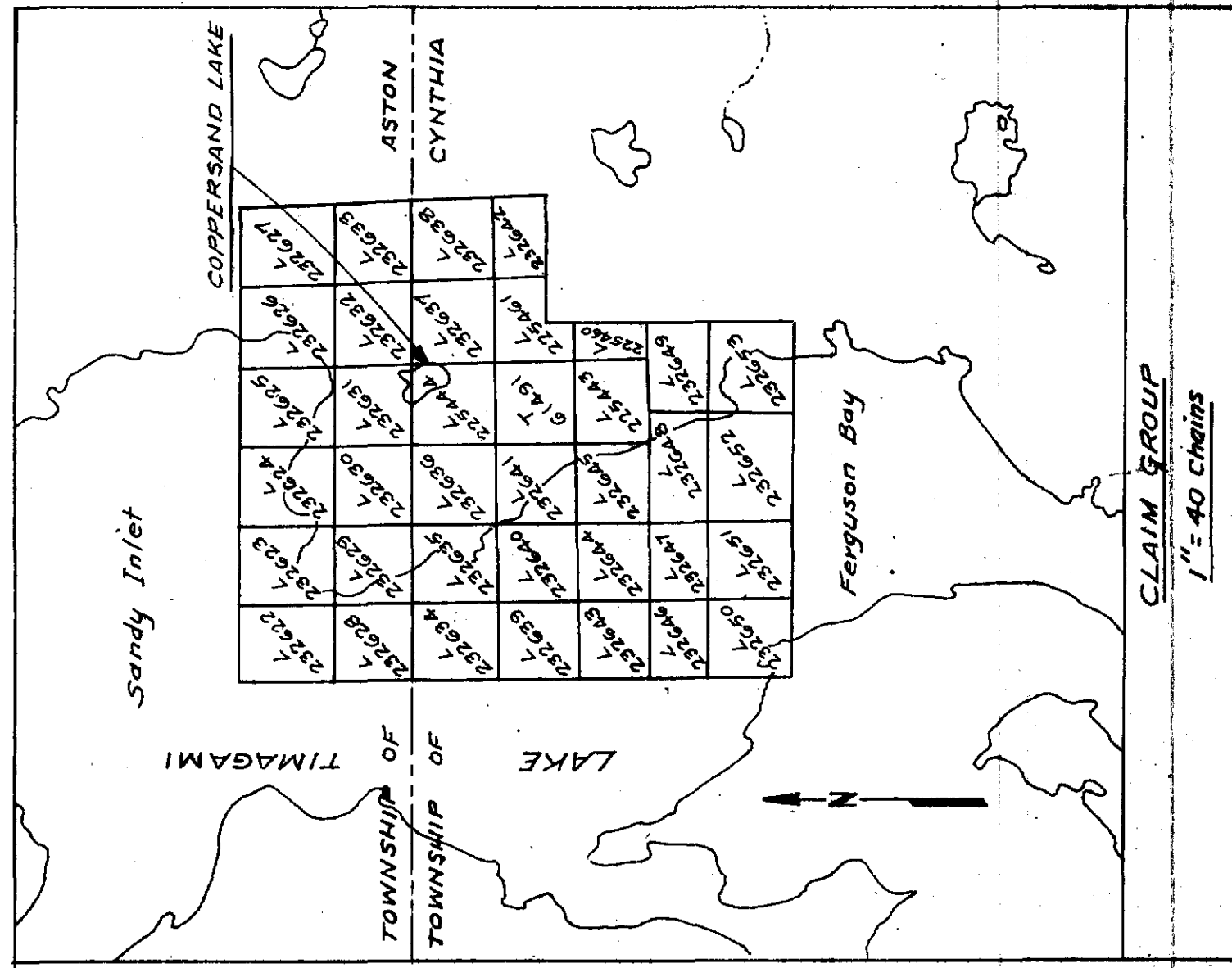


L-232641



T-61491

L-225443



L-225461

**LEGEND**

- A Zone - Flat, ELEV. 1172.5 at 32+00N - 2100 W. (Hanging Well)
- B Zone - Dip 20° W, ELEV. 1151.4 at 34+00N - 2120 W. (Hanging Well)
- C Zone - Dip 40° NE, ELEV. 1078.0 at 39+40N - 0+16 W. (Hanging Well)
- Lake Timagami, El. 950.0, S.L. Compression, El. 1025.0, A.S.L. (34+00 N. on Base Line)
- El. of Argillite Diabase Contact at 34+00N - 2120W approx. 1157.0
- 1195.0 Elevation of Station.
- 7-3 ..... etc.

**GUNNEX LTD.**  
**A. HARDIE OPTION**  
 CYNTHIA TWP. COPPER PROSPECT  
 TEMAGAMI AREA, ONT.  
**GEOLOGICAL & TOPOGRAPHICAL**  
**- PLAN -**  
 Scale: 1" = 50'

