



41P01SE0003 14 CYNTHIA

010

## Diamond Drilling

Township of Cynthia

Report NO: 14

Work performed by: Copperfields Mining Corp. Ltd.

Claim NO	Hole NO	Footage	Date	Note
L 259464	D2-46	307'	June/71	(1)
L 259468	D2-47	307'	June/71	(1)

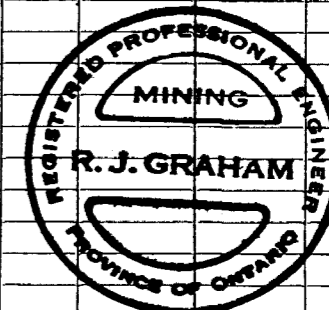
### Notes:

(1) 173/71

**DIAMOND DRILL RECORD — COPPERFIELDS MINING CORP. LTD.**

Started June 18, 1971 Purpose Testing Radem E. M. /S.E. - 200 Conductor Hole No. D2 - 46  
 Completed June 20, 1971 Depth 300' by rods Sheet No. 1 of         
 Twp. Phyllis Claim L 259464 Group KoKoKo Zone         
 Lat. 20+00S Dep. 4+50E Az. 220° Elev. Swamp Dips Collar -45° 150°-41° 300°-35°

FOOTAGE		DESCRIPTION	SAMPLE NO.	FOOTAGE		WIDTH	ASSAYS		
FROM	TO			FROM	TO		% CU	% Ni	% CO
0	16	Casing							
16	23.7	Dacite porphyry or possibly crystal tuff. Innumerable tiny white subbedral feldspars to 1/8". Weak foliation 45° to core axis (c. a.)							
					<u>N.B.</u> - Core specimens for Assessment.				
23.7	31	Tuff highly chloritic, occasional siliceous sections with weak bedding 45° to c. a. Contact with preceding sharp at 45°. Unmineralized.		20'		3"			
31	48	Graphitic Schist		45		3"			
		31-36 80% graphite, minor marcasite on slips < 1/2% pyrrhotite (po)		90		3"			
				115		3"			
				140		3"			
				148					(not claimed for work)
				165		3"			
				190		3"			
				215		3"			
				240		3"			
				265		3"			
				290		3"			
				300					(Not claimed for work)
		36-42 20% graphite local minor po.							
		42-48 80% graphite, with 5% py/po from 42-44							
48	81.5	Tuff Acid, pale buff, local excellent bedding 45° to c. a. Local entrail type flow breccia structures. Unmineralized.							
81.5	83	Graphitic Schist 50% graphite < 1/2% py. marcasite.							
83	103	Dacite breccia, heterogeneous, with local minor po 83-85. Less brecciation 98-103.							
103	107	Tuff, acid, pale buff, weak bedding 45° to c. a. Unmineralized.							
107	108	Graphitic schist, 45° bedding.							
108	114	Tuff, local minor graphite.							
114	148	Graphitic schist							
		114-122 40% graphite, local minor marcasite, considerable local brecciation.							
		122-139 10% graphite, local marcasite.							
		139-147.5 60-90% graphite, 45° foliation.							



TPC  
 Drilled by Morissette AQ Wireline

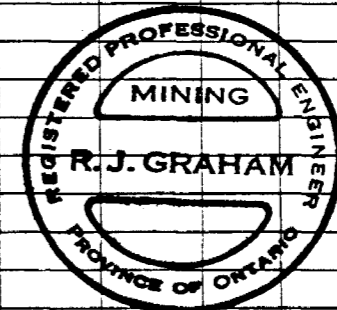
Logged by R. J. Graham *R. J. Graham*

# DIAMOND DRILL RECORD

Hole No. D<sub>2</sub>-46

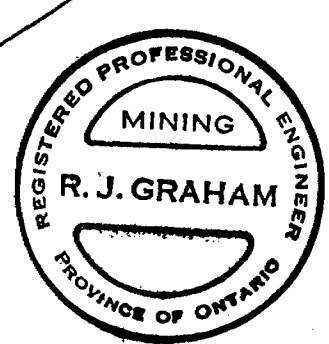
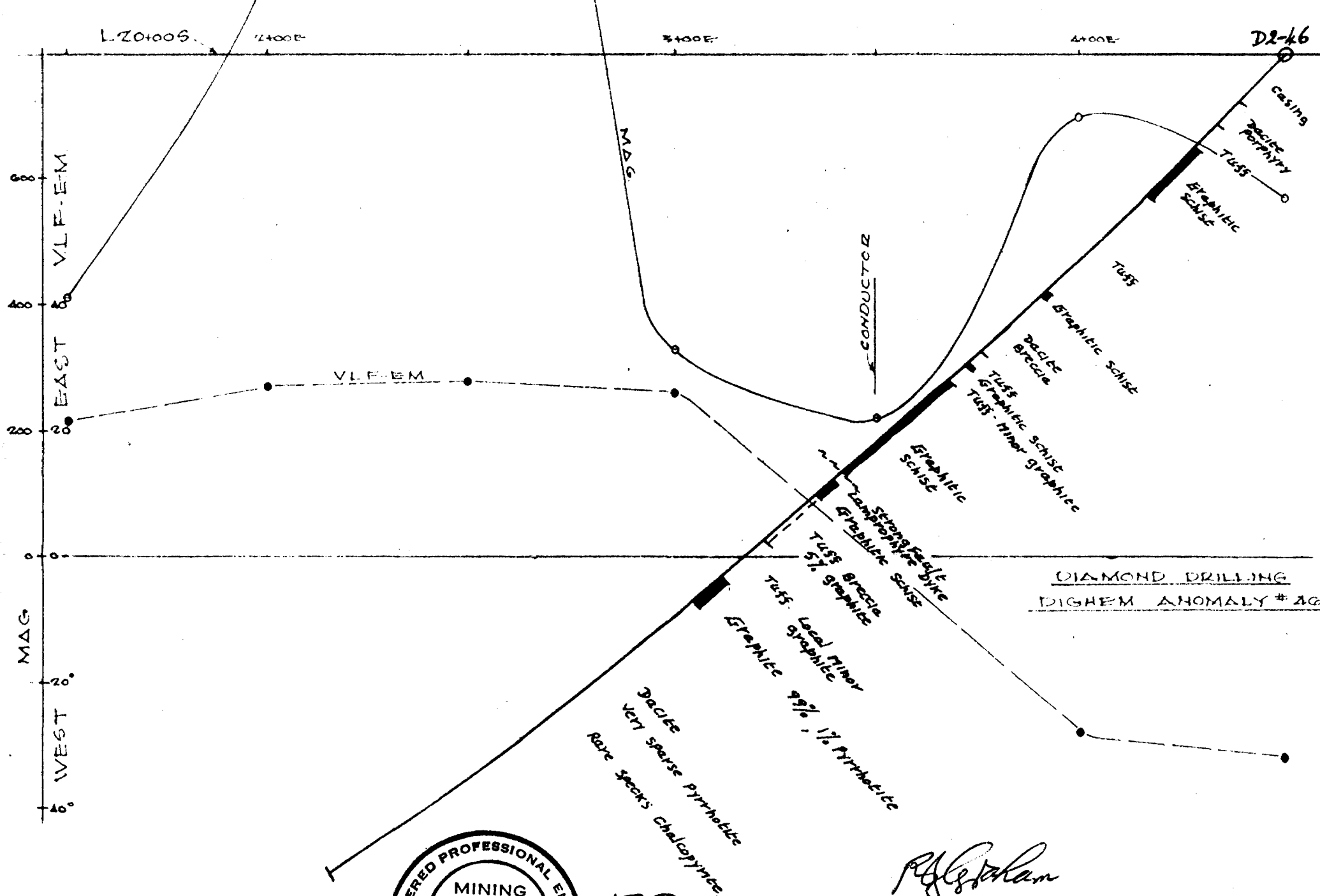
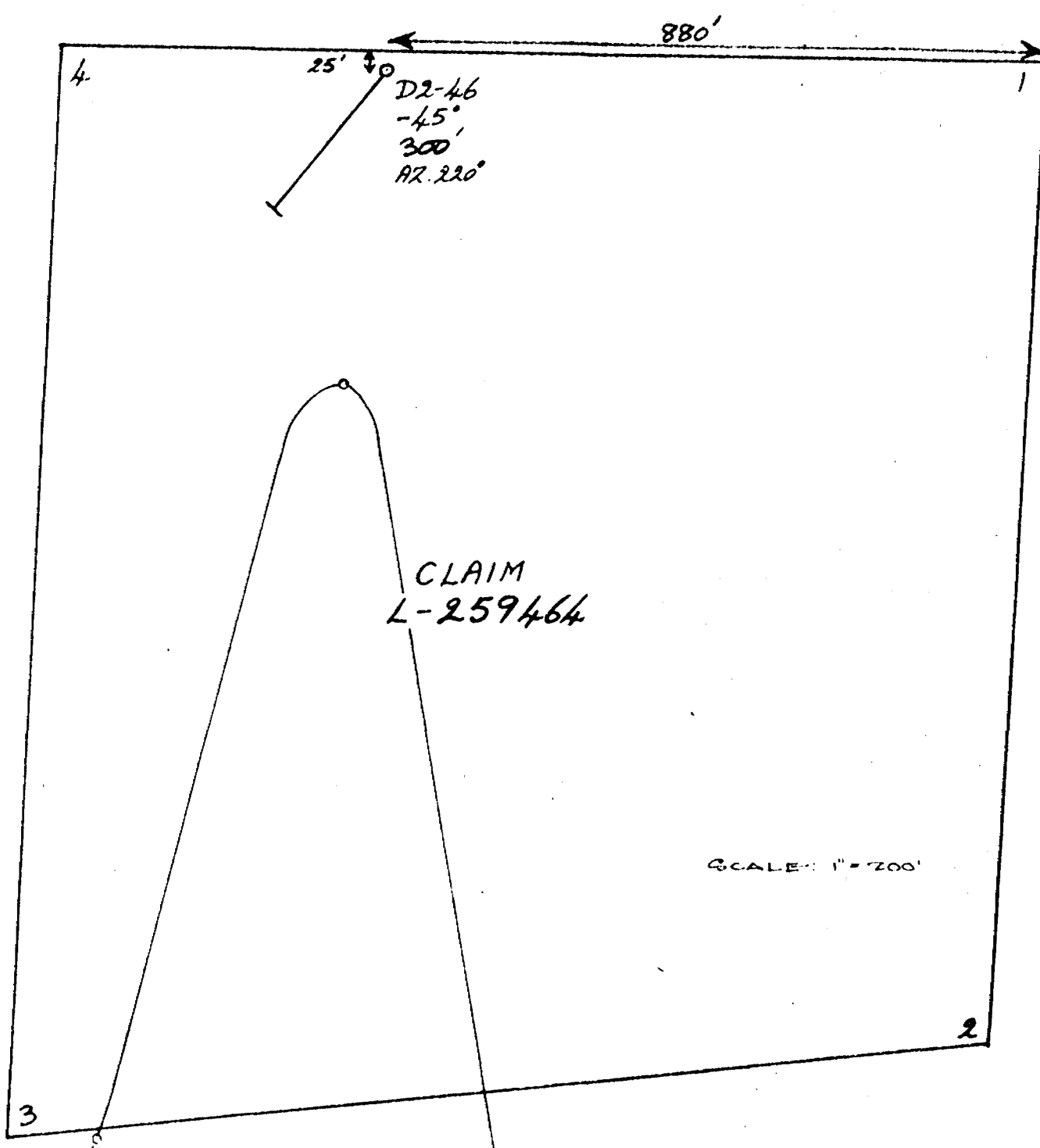
Sheet No. 2 of       

FOOTAGE		DESCRIPTION	SAMPLE NO.	FOOTAGE		WIDTH	ASSAYS	
FROM	TO			FROM	TO			
		147.5-148 Fault zone, intense shearing 90° to core axis.						
148	150.5	Lamprophyre dyke both contacts faulted. Dioritic variety with abundant biotite in tiny flakes, possibly a Kersantite lamprophyre.						
150.5	156	Graphitic schist, 60%-10% graphite, < 1/2% py, po.						
156	173	Tuff breccia, 5% graphite, < 1/2% py, po. Angular fragments to 3".						
173	187	Tuff, 45° bedding, local minor graphite.						
187	196	Graphite 99% graphite, 1% pyrrhotite in small flecks and blebs.						
196	307	Dacite, grey, massive, locally with tiny white feldspars, possibly crystal tuff in part. Very sparse po. in small blebs, locally with very rare chalcopyrite.						
		End of hole 300' by rods.						
		<i>R. J. Graham</i>						





14/21/14



173

COPPERFIELDS MINING CORP. LTD.

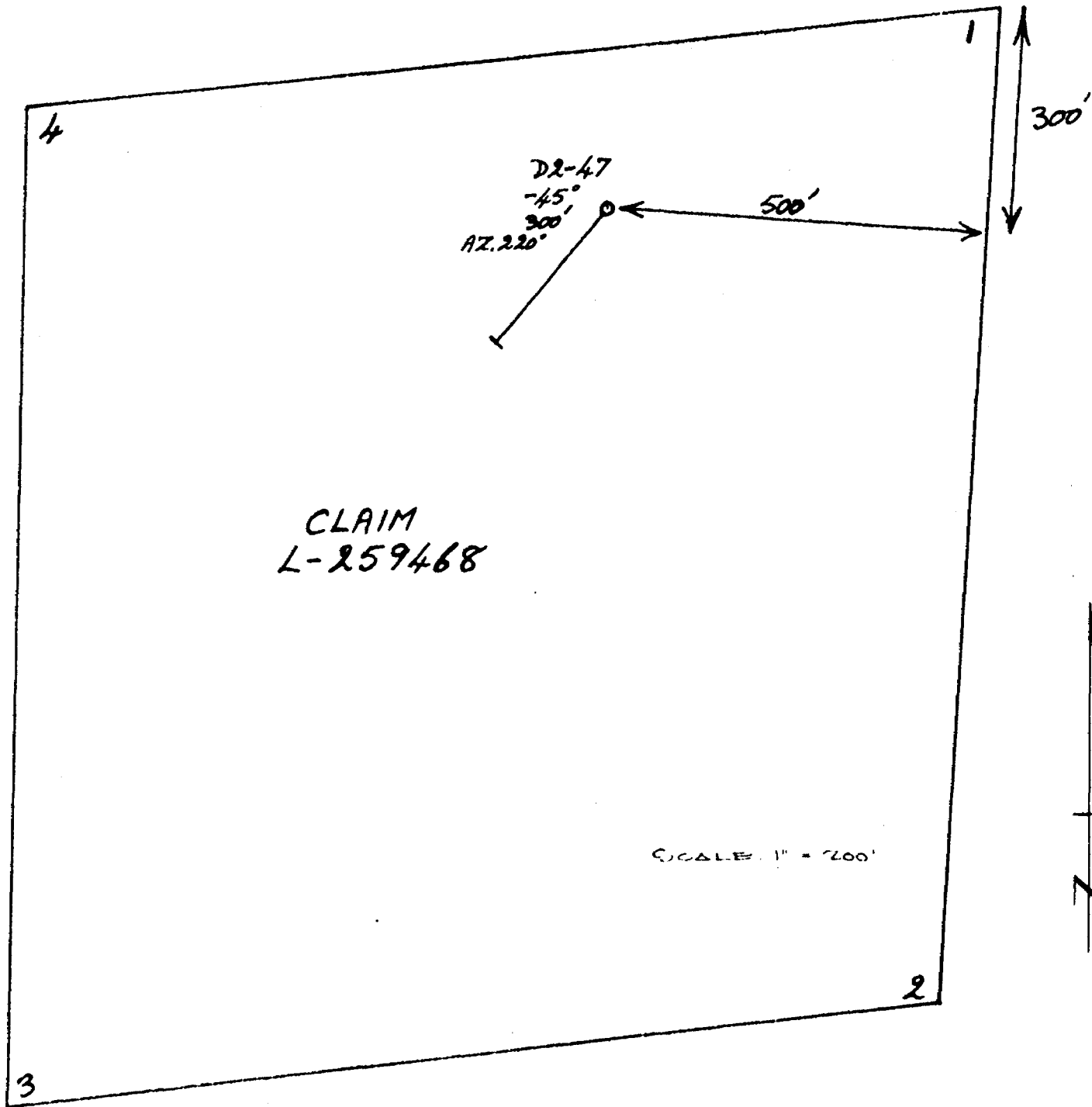
KO KO KO LAKE GROUP

Scale: 1" = 30'

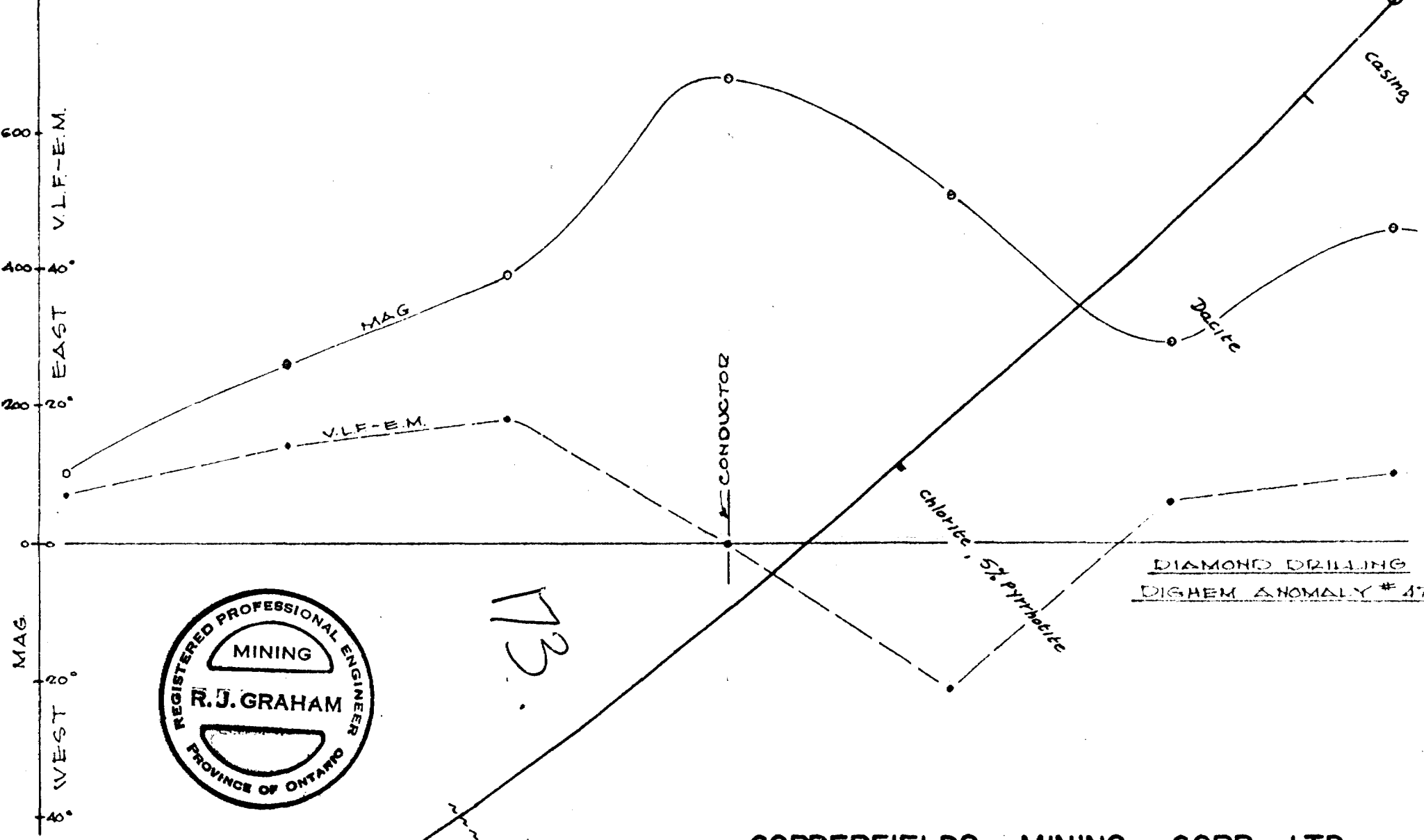
Job 946-2

*R. J. Graham*

14/ELI #



L 32+00S      8+00W      7+00W      6+00W      D2-47



173  
 Weak Strong Fault  
 60% Pyrites  
 40% Pyrites, Pyrrhotite

**COPPERFIELDS MINING CORP. LTD.**  
 KO-KO-KO LAKE GROUP

Scale: 1" = 30'

Job 946-2

*R.J. Graham*