

LOCATION:Delhi twp.....

Hole No. 1

LAT:DIP60°.....

DEP:STRIKE . S60°W.....

ELEV:LOGGED BY .. Ralph H. Benner

FOOTAGE	DESCRIPTION	SAMPLE NO.	AG	CO.	NI.
0 - 83.0	Diabase.				
	40.0-48.0 Schisted with numerous calcite stringers upto 1/2" in width. Mineralized with fine cpy and pyr.				
	51.0-52.0 Lost core.				
	58.0-61.0 Schisted with calcite stringers - Fine cpy and Pyr.				
	61.0-68.0 Lost core				
	68.0-68.4 Schistosed				
	83.0-End of hole				

**DUPLICATE COPY
POOR QUALITY ORIGINAL
TO FOLLOW**

LAHAY GROUP

551734

LOCATION: Delta Top

Hole No. 1

LAT: _____ DIP 60°

DEP: _____ STRIKE S. 60° W.

ELEV: _____ LOGGED BY Paul H. Lerner

FOOTAGE	DESCRIPTION	SAMPLE NO.	AG	CO.	NI.
0-23.0	Diabase				
	40.0-48.0--Schisted with numerous calcite stringers up to 2" in width. Mineralized with fine Cpy and Pyr.				
	51.0-52.0- Lost core				
	57.0-61.0--Schisted with Calcite stringers Fine Cpy and Pyr.				
	61.0-68.0--Lost core				
	68.0-69.0--Schistose				
	82.0--End of Hole.				

LAHAY GROUP

LOCATION: Delhi Twp-----

Hole No. 2-----

LAT: -----DIP 60°-----

DEP: -----STRIKE S46°-----

ELEV: -----LOGGED BY Ralph L. Benner

FOOTAGE	DESCRIPTION	SAMPLE NO.	AG	CO.	NI
0 - 75.0	Diabase-Altered sections containing considerable Epidote. At 18.8 - 1" Calcite and Quartz, some cpy. 36.0 - 37.0 - Lost core At 53.4 - 1" Quartz 53.5 - 55.5 - Lost core 55.5 - 57.0 - Quartz 57.5 - 61.5 - Core missing 75.0 - End of hole				

**DUPLICATE COPY
POOR QUALITY ORIGINAL
TO FOLLOW**

LAWAY GROUP

S 51734

LOCATION: Delhi Twp.

Hole No. 2

LAT: _____ DIP 60°

DEP: _____ STRIKE 94.6°W

ELEV: _____ LOGGED BY Ralph L. Baker

FOOTAGE	DESCRIPTION	SAMPLE NO.	AG	CO.	NI.
0-75.0	Diabase-Altered sections containing considerable Epidote At 13.8-1" Calcite and Quartz, some cpy. 36.0-37.0-Lost Core At 53.4-1" Quartz 53.5-55.5-Lost core 55.5-57.0-Quartz 57.5-61.5-Core missing 75.0-End of Hole.				

LAHAY GROUP

LOCATION :

Hole No. ³

LAT : DIP 75°

DEP : STRIKE S62°W

ELEV : LOGGED BY Ralph I. Benner

FOOTAGE	DESCRIPTION	SAMPLE NO.	AG	CO.	NI.
0 - 50.0	Diabase 24.0 - 25.0 Core missing 28.0 - 30.5 Quartz, .01% Pyr. 30.5 - 32.0 Core Missing. 32.0 - 36.0 Quartz 36.0 - 40.0 Core Missing 50.0 END OF HOLE				

**DUPLICATE COPY
POOR QUALITY ORIGINAL
TO FOLLOW**

LAHAY GROUP

LOCATION : -----

Hole No. 3-----

LAT : ----- DIP 74° 30'-----

DEP: ----- STRIKE S62° W-----

ELEV: ----- LOGGED BY Ralph I. Bat or

FOOTAGE	DESCRIPTION	SAMPLE NO.	AG	CO.	NI.
0-50.0	Diabase				
	24.0-25.0-Core missing				
	28.0-30.5-quartz, O.D. Fvr.				
	30.5-32.0-Core missing				
	32.0-36.0-quartz				
	36.0-40.0-Core missing				
	50.0- end of hole				

LAWAY GROUP

Delhi Twp.

4 4

LOCATION: -----

Hole No. -----

LAT: -----

DIP

75°

75°

DEP: -----

STRIKE

102° E

N 32° E

ELEV: -----

LOGGED BY

Ralph I. Warner

FOOTAGE	DESCRIPTION	SAMPLE NO.	AG	CO.	NT.
0-47.0	Diabase Diabase				
0-47.0	47.0- End of hole				

LAVA GROUP

LOCATION : _____
LAT : _____ DIP Vertical VERT.
DEP: _____ STRIKE _____
ELEV: _____ LOGGED BY Ralph L. Lerner

Hole No. 5 5

FOOTAGE	DESCRIPTION	SAMPLE NO.	AG	CO.	NI.
0-76.0 0-76.0	Diabase <u>Diabase</u> 76.0- End of hole				

LAHAY GROUP

LOCATION: ----- S 51734 Hole No. 66

LAT: ----- DIP Vertical

DEP: ----- STRIKE

ELEV: ----- LOGGED BY Ralph I. Berner

FOOTAGE	DESCRIPTION	SAMPLE NO.	AG	CO.	NI.
0-75 0-75	Diabase Diabase 75.0- End of Hole				

LAHAY GROUP

LOCATION: Delhi Twp.

Hole No. 7

LAT: DIP 45°

DEP: STRIKE S52°W

ELEV: LOGGED BY Ralph L. Benner

FOOTAGE	DESCRIPTION	SAMPLE NO.	AG	CO.	NI
0 - 96.0	Diabase 32.5 - 35.0 Core missing 35.5 - 37.5 Core Missing 80.0 - 82.5 Quartz At 83.0 - 1" Quartz 88.0 - 89.0 Fractured core, 4" quartz 89.0 - 90.0 Missing core 96.0 - END OF HOLE				

**DUPLICATE COPY
POOR QUALITY ORIGINAL
TO FOLLOW**

LAHAY GROUP

S 51734

LOCATION: ----- Belhi Twp. -----

Hole No. ----- 7 -----

LAT: ----- DIP 45° -----

DEP: ----- STRIKE S 52° W. -----

ELEV: ----- LOGGED BY Ralph J. Ferrer -----

FOOTAGE	DESCRIPTION	SAMPLE NO.	AG	CO.	NI.
0-96.0	Diabase				
	32.5-35-Core Missing				
	35.5-37.5-Core Missing				
	80.0-82.5-Quartz				
	At 83.0-1" Quartz				
	88.0-89.0- Fractured core, 2" Quartz				
	89.0-90.0- Missing Core				
	96.0- End of Hole				

LAHAY GROUP

551380

LOCATION: Delhi Twp.

Hole No. 8

LAT: _____ DIP 45° 45°

DEP: _____ STRIKE N 10° W. N 10° E

ELEV: _____ LOGGED BY _____

FOOTAGE	DESCRIPTION	SAMPLE NO.	AG	CO.	NI.
0-113.0	Granite <i>Granite</i>				
0-113.0	At 66.5-1" quartz and carbonate 113.0- End of Hole	AT 66.5-1"	QTR	+	CARB

LOCATION : Delhi twp.....

Hole No. 9.....

LAT : DIP 45°.....

DEP: STRIKE N35°.....

ELEV: LOGGED BY .. Ralph L. Benner

FOOTAGE	DESCRIPTION	SAMPLE NO.	AG	CO.	NI.
0 - 50	Granite, 0.1% Pyr. & Cpy 21.5 - 23.6 - Core Missing At 25.1 - 2" Quartz, few xtals pyrite 28.0 - 30.0 - Core Missing 50.0 - END OF HOLE				

**DUPLICATE COPY
POOR QUALITY ORIGINAL
TO FOLLOW**

LAHAY GROUP

551880

LOCATION: Delhi Twp.

Hole No. 9

LAT: _____ DIP 45°

DEP: _____ STRIKE N 35° E

ELEV: _____ LOGGED BY Ralph W. Bower

FOOTAGE	DESCRIPTION	SAMPLE NO.	AG	CO.	NI.
0-50	Granite, 0.15 Fyr. & Cpy. 21.5-23.6- Core Missing At 25.1-2" Quartz. few scale pyrite 28.0-30.0-Core Missing 50.0- end of hole				

LAHAY GROUP

S 51880

LOCATION: ~~20141 Sp.~~-----

Hole No. 10 10

LAT: ----- DIP 45° 45°

DEP: ----- STRIKE N 30° E

ELEV: ----- LOGGED BY ~~12111 I. Turner~~

FOOTAGE	DESCRIPTION	SAMPLE NO.	AG	CO.	NI.
0-50	Granite <i>Granite</i>				
0-50	At 38.5- 5" quartz, 2% sp. AT 38.5-5" QTZ, 2% CP 50.0-End of Hole				

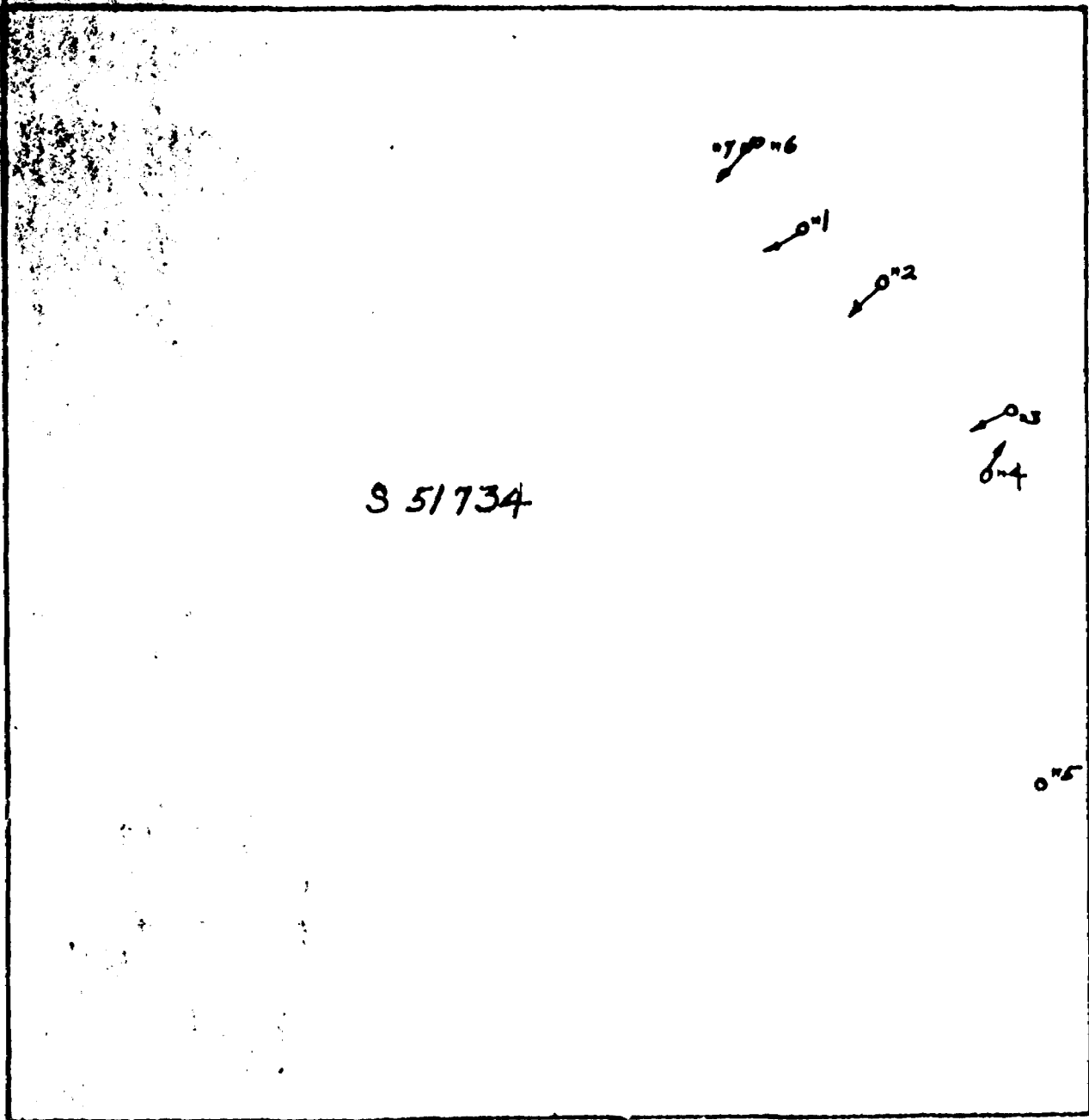
Lehay Group

LOCATION: Delhi Twp.
 LAT: 45° 45'
 DEP: STRIKE N 40° E N 40° E
 ELEV: LOGGED BY Ralph I. Demmer

551867

Hole No. 11 11

FOOTAGE	DESCRIPTION	SAMPLE NO.	AG	CO.	NI.
0-87.0	Granite <i>Granite</i>				
0-87	82.5-83.1- Quartz, 5% Carbonate	82.5-83.1	Q	TZ, 5%	CARBONATE
	87.0- End of Hole				



S 51734

0-1

0-2

0-3

0-4

0-5

0-6

DIAMOND DRILL HOLE LOCATION

CLAIM S 51734

LAHAY GROUP

DELHI TOWNSHIP

SURBURY DISTRICT



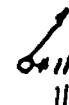
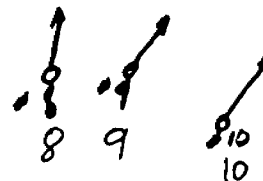
1"

scale 1"=200'

1952

S 51880

S 51867



DIAMOND DRILL HOLE LOCATIONS

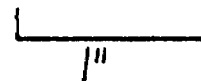
CLAIM S 51880 + S 51867

LAHAY GROUP

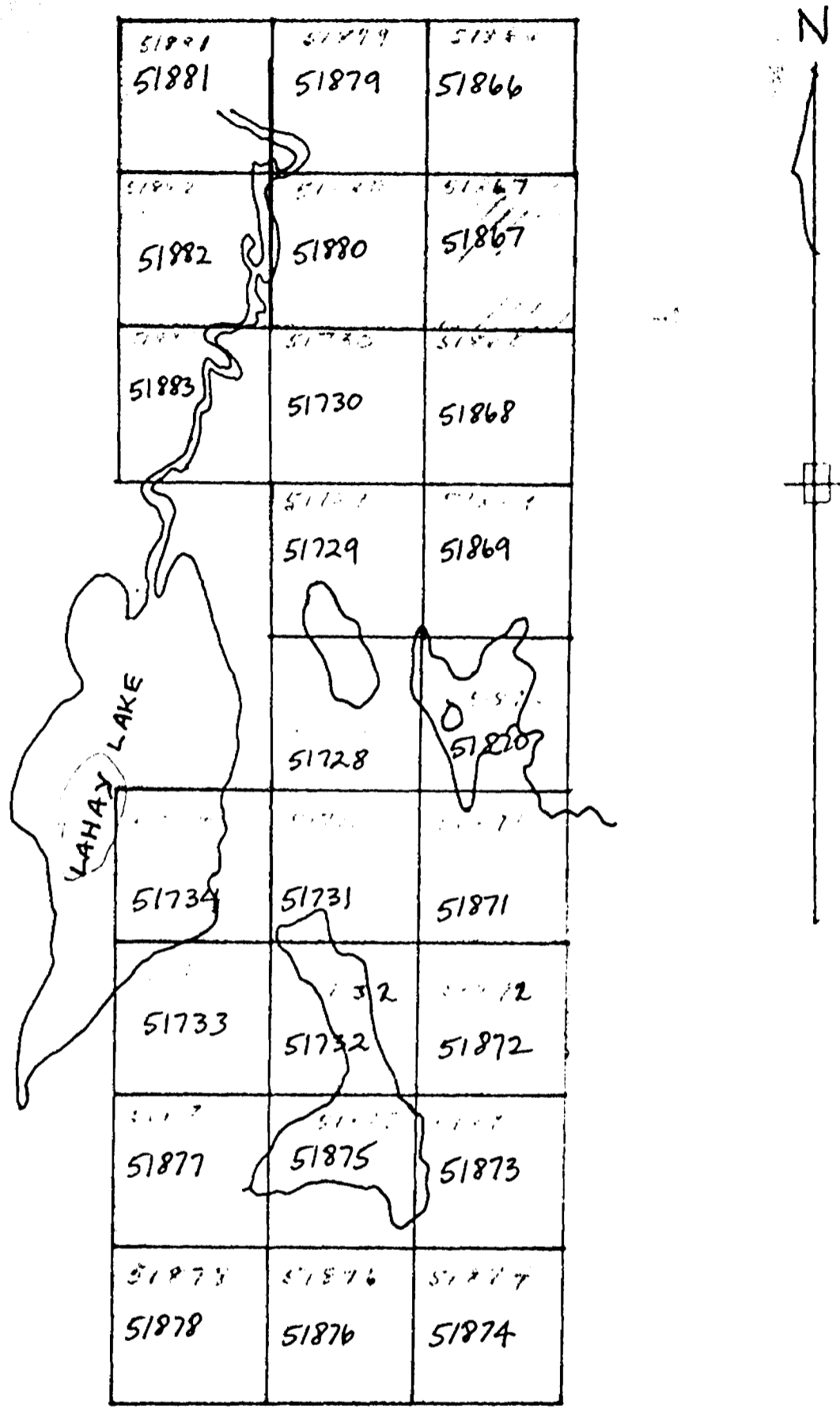
DELHI TOWNSHIP

SUBBURY DISTRICT

Scale = 1" = 200'

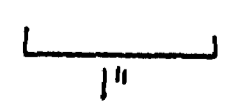


1952



SKETCH SHOWING
 "LAHAY GROUP"
 DELHI TOWNSHIP
 SUDBURY DISTRICT
 DIAMOND DRILLING ON HATCHED CLAIMS

scale 1" = 1/4 Mile

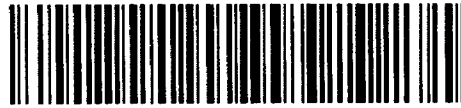


OFFICE OF MINING RECORDER



ONTARIO
DEPARTMENT OF MINES

SUDBURY MINING DIVISION
SUDBURY, ONTARIO



41P01SW8494 DELHI 11B1 DELHI

900

October 6, 1952.

Dr. M. E. Hurst,
Provincial Geologist,
Ont. Dept. of Mines,
Parliament Buildings,
TORONTO, Ontario.



Dear Sir:

Enclosed please find logs of diamond drilling,
locational plans and group sketch, submitted by Mr. L. J. Lahay,
Pickering, Ontario. *on mining claims in Delhi Sup.*

Please be advised that the core is stored on the
property.

Yours very truly,

JRM:GA
Encls.

J. R. McGinn,
Mining Recorder.