

Diamond Drilling



41P026E0023 0011E1 TURNER

010

Township of TURNER

Report NO 10

Work performed by: H. Hibbert Mines

Claim NO	Hole NO	Footage	Date	Note
S.77112	1	12.5'	July/54	
	6	206.0'	Oct/54	
	7	115.0'	Oct/54	
	8	391.0'	Oct/54	
S.77110	2	22.0'	July/54	
	3	16.5'	July/54	
S.77157	4	260.0'	Oct/54	
	5	145.0'	Oct/54	
	9	326.0'	Oct/54	

TOTAL: 9 DH 1494 FT

Notes:

HARRISON HIBBERT MINES LIMITED BULL LAKE PROPERTY, TURNER TOWNSHIP
SUDBURY MINING DIVISION

Diamond Drill Hole # 1

Location: Claim # S-77112 Type of Machine: Packsack Drill
Dip: vertical Date: July 1954.
Length: 12' 6".

0-6' : Fine grained dark greywacke with network of chloritic material.
The first two inches of core very rusty and spongy have definite gossan-like appearance. Within the next few feet of core numerous rusty slips at 30 to 40 degrees to core were observed.

The mineralization consists of disseminated pyrite with some pyrrhotite and a little chalcopyrite.

A radio-activity ranging from 4 to 6 times background was recorded from 0 to 3' (Sample T.15), and from 3 to 6' (Sample T.16).

6'-7'6": Fine grained dark greywacke, core badly broken up, numerous rusty slips at 30 degrees to core.

7'6" - 12'6": Fine grained dark greywacke mineralized with finely crystallized pyrite and very little chalcopyrite. The radio-activity ranges from two to three times background.

End of Hole.

~~NOT INCLUDED~~
G.L.H.

HARRISON HIBBERT MINES LIMITED, TURNER TOWNSHIP DRILLING

Diamond Drill Hole #6

LOCATION - Claim # 77112

Date started - Sat, October 16 (7 p.m.)

Date stopped - Mon, October 18 (4 p.m.)

DIP - Vertical

HOLE DIST - 191 Core recovered AZ - 0
206 hole drilled

GEOLOGY

- 0-2 - Casing.
- 2-58 - Green quartzite, fine grained, bands of pyrite
malco etc.
- 58-59 - Slate, green, banding
- 59-82.5 - Quartzite coarse, some quartz pebbles.
- 82.5-84.7 - Slate, green banded.
- 84.7-88.0 - Quartz conglomerate heavy sulphide mineralization.
- 88.0-124.0 - Quartzite, some banding, fine grained.
- 124.0 -149.0 - Quartz conglomerate, coarse quartzite matrix,
quartz pebbles blue.
- 149.0 -191.0 - Keewatin ? (obation 45 degrees to 15 deg.
to core).
- 191- 206 - Core abandoned in hole.

ECONOMIC

- 149.0 -149.6 - Massive sulphides.
- 50 - 75 Radio-active zone.

GEIGER COUNTER READINGS

<u>FOOTAGE</u>	<u>BACKGROUND</u>	<u>READING</u>	<u>TIMES BACKGROUND</u>
0 -50	10 - 15	15 - 20	1½
<u>50 -75</u>	"	<u>20 - 25</u>	2
75 -100	"	15 - 20	1½
100 -192	"	15 - 20	1½

HARRISON HIBBERT MINES LIMITED, TURNER TOWNSHIP DRILLING

Diamond Drill Hole # 7

LOCATION - Claim # 77112

Date started - Wed, 20 October 1954 (9 a.m.)

Date stopped - Fri, 22 October 1954

DIP - (-56 deg.)

HOLE DIST - 199.0' AZ - (273 deg.)

GEOLOGY

- 0-7 - Casing.
- 7-33 - Greywacke, some pebbles.
- 33-36 - Ground core.
- 36-42 - Coarse quartz conglomerate (pebbles 1" round)
- 42-49 - Green slaty quartzite (banded).
- 49-67.5 - Quartzite micro conglomerate.
- 67.5 -69.2 - Coarse quartz conglomerate.
- 69.2 -70.5 - Banded green slaty quartzite.
- 70.5 -100.4 - Coarse conglomerate in quartzite.
- 100.4-200.0 - Keewatin lavas.

ECONOMIC

- 100.4 - 4" massive sulphides mostly pyrite.
- 118.5 - 115 - Quartz calcite vein (45 deg. to core).

Mild radio-active zone 7' - 25'.

GEIGER COUNTER READINGS

<u>FOOTAGE</u>	<u>BACKGROUND</u>	<u>READING</u>	<u>TIMES BACKGROUND</u>
7 -25	15 - 20	25 - 30	1½
25 - 50	"	20 - 35	1½
50 -100	"	20 - 25	1½
100 -200	"	18 - 20	1

HARRISON HIBBERT MINES LIMITED, TURNER TOWNSHIP DRILLING

Diamond Drill Hole # 8

LOCATION - Claim # 77112 Date started - Sat. Oct. 23/54, (4 p.m.)
Date stopped - Oct. 26/54, (2 p.m.)

DIP - (-46 deg.) AZ - (250 deg.)

HOLE DIST - 391.0 feet

GEOLOGY

- 0-15 - Casing.
- 15-47 - Micro quartz conglomerate in quartzite matrix,
pyrite (bedding at 45 degrees).
- 47-63 - "
- 63-65.2 - Slate green (banded) 45 degree.
- 65.2 -102.5 - Micro conglomerate in quartzite.
- 102.5-106.0 - Slate or basalt dike (45 deg.) ?
- 106.0-124 - Micro conglomerate in quartzite.
- 124.0-135 - " " " " (weathered).
- 135.0-168 - Coarse quartz conglomerate, pyrite chaloo
(some lost ore).
- 168.0-174.8 - Slate, green, banding (45 deg.)
- 174.8-194.0 - Coarse quartz conglomerate pyrite
- 194.0-215.4 - Slate, green, banding (45 deg.)
- 215.4-221.3 - Coarse conglomerate
- 221.3-250 - Banded slate, green.
- 250.0-310 - Conglomerate.
- 310. -391.0 - Keewatin lavas.

HOLE STOPPED 391.0'.

ECONOMIC

- 136.5 - 137.5 - Lost core
- 138.0 - 139.0 - "
- 142 - 145 - "
- 146 - 149 - "

Core - 135' - 150'

Sample #63 - 47.5 - 48.5 - 0.039% U₃O₈

64 - 48.5 - 50.0 - 0.055% "

(Continued)

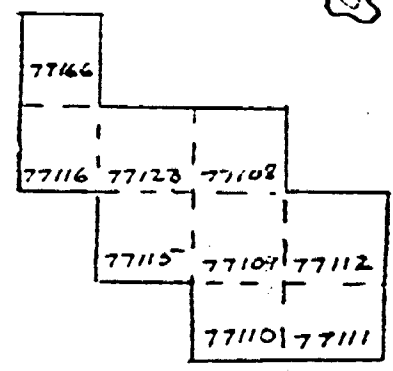
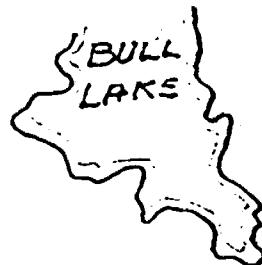
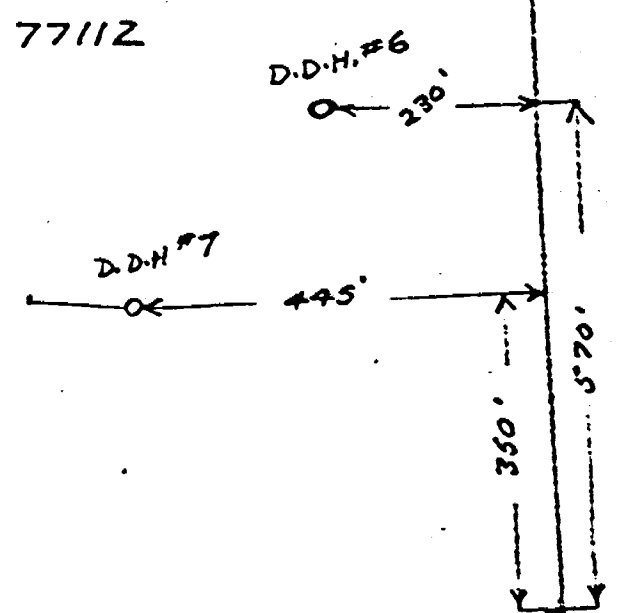
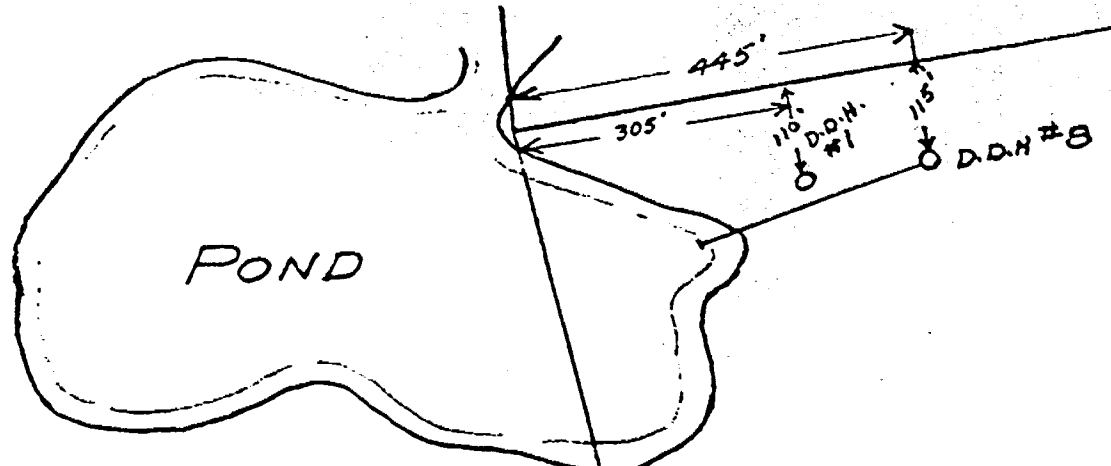
HARRISON HIBBERT MINES LIMITED, TURNER TOWNSHIP DRILLING

Diamond Drill Hole # 8, cont.

GEIGER COUNTER READINGS

<u>FOOTAGE</u>	<u>BACKGROUND</u>	<u>READING</u>	<u>TIMES BACKGROUND</u>
15 -48	15-20	20-25	
48 -50	"	<u>25-35</u>	2
50 -52	"	<u>25-35</u>	2
53.5 -55	"	<u>25-30</u>	2
55 -75	"	20-25	
75-76.5	"	20-25	
76.5 -77.5	"	<u>25-30</u>	2
77.5 -85.5	"	20-25	
85.5 -87.0	"	<u>25-30</u>	2
87.0 -125.0	"	20-25	
125.0-250	"	15-20	
250 -391.0	"	15-20	

1/2



TURNER
SERGINAN
2 MI

77109

77112

1" = 1/2 Mi.

HARRISON HIBBERT MINES LIMITED BULL LAK^e PROPERTY, TURNER TOWNSHIP
SUDBURY MINING DIVISION

Diamond Drill Hole # 2

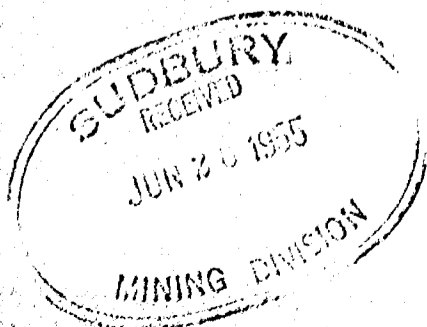
Location: Claim # S-77110 Type of Machine: Packsack Drill
Dip: vertical Date: July, 1954.
Length: 22 feet.

- 0-0'4" Rusty quartz pebble conglomerate mineralized with abundant finely crystallized pyrite.
- 0-4"-2'6" Coarse-grained green quartzite with narrow bands of micro-conglomerate, well mineralized with fine-grained pyrite.
- 2'6" - 5' Coarse grained quartzite enclosing a few quartz pebbles. Rusty slips at 40 degrees to core were noted.
- 5'- 7'6" Quartz pebble conglomerate with chloritic matrix well mineralized with pyrite. Rims of massive pyrite were observed around some of the pebbles.
- 7'6"-10'8" Quartz pebble conglomerate with lesser amount of pyrite. Rusty slips at 30 degrees to core.
- 10'8"-22' Fine grained soft grey argillite. The upper contact with conglomerate beds is sharply defined. The pyrite mineralization is very sparse.
- The hole was abandoned at 22' as the softness of the ground caused the machine to block.

Radio-activity ranging from 4 to 6 times background was recorded on the first three feet of core (Sample T.17) and from 5 to 8' (T.18)

End of Hole.

*NOT INCLUDED
G. L. H.*



HARRISON HIBBERT MINES LIMITED BULL LAKE PROPERTY, TURNER TOWNSHIP
SUDBURY MINING DIVISION

Diamond Drill Hole # 3

Location: Claim # S-7711D Type of Machine: Packsack Drill

Dip: Vertical Date: July, 1964

Length: 16'6"

0-3'2" Coarse-grained green quartzite well mineralized with abundant fine-grained pyrite. One narrow band of quartz pebble conglomerate was observed from 0 to 4".

3'2"-12'2" Conglomerate with quartz pebble and some green or black jasper pebbles. The chloritic matrix is well mineralized with finely crystallized pyrite. Rims of massive pyrite with a little chalcopyrite were observed around pebbles.

12'2"-13' Quartz pebble conglomerate with lesser amount of pyrite.

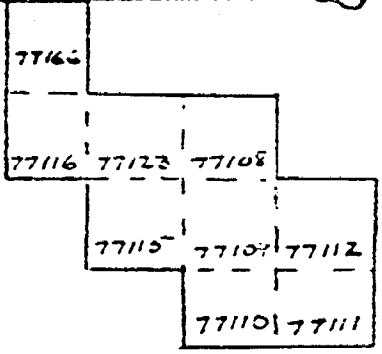
13' - 14' Fine-grained grey quartzite, core badly broken up, with abundant sludge.

14' x 16'6" Fine-grained greenish quartzite mineralized with finely disseminated pyrite; some chalcopyrite and pyrrhotite was noted.

A radio-activity ranging from 4 to 5 times background was recorded from 10 to 13 feet (Sample T 19)

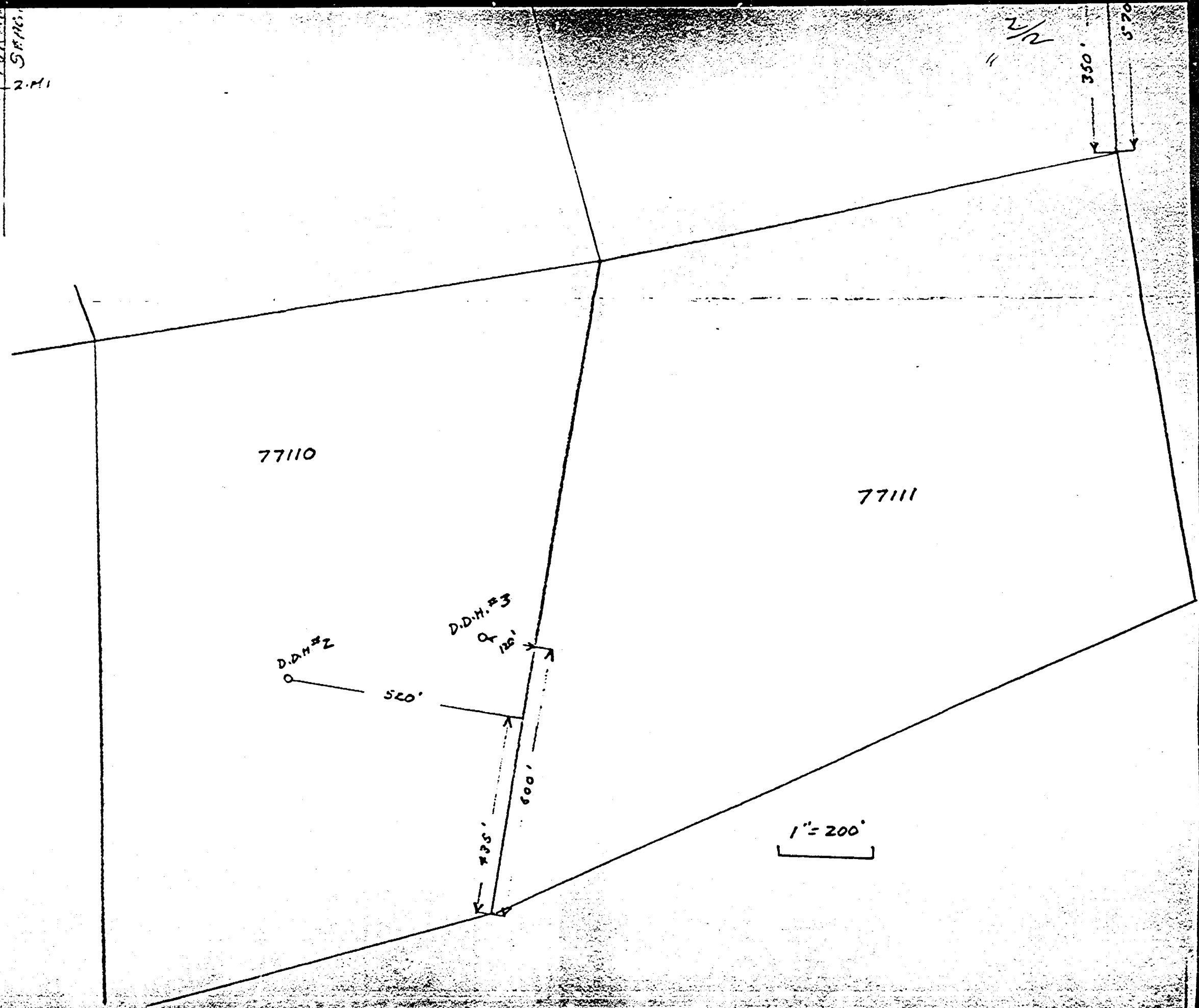
End of Hole.

NOT INCLUDED
G. L. H.



TURNE
SRNG.
2 MI

1" = 1/2 Mi.



77110

77111

D.D.H.#2

520'

D.D.H.#3

125'

600'

735'

2 1/2

350'

570'

1" = 200'

HARRISON HIEBERT MINES, DIAMOND DRILLING PROGRAMME TURNER TOWNSHIP

Diamond Drill Hole # 4

LOCATION: Claim # 77157

DATE STARTED - October 8/54

DATE STOPPED - October 11/54

DIP Vertical

HOLE DIST. - 260' AZ - 0

GEOLOGY

- 0-5 - Casing
- 5-134 - Quartzite and greywacke, fine grained (few quartz pebbles) bedding, 70 degrees to core.
- 134-153 - Quartzite green, pyrite and chalco.
- 153-172.5- Coarse quartz conglomerate in quartzite matrix, sulphide mineralization heavy. (Inclusions $\frac{1}{2}$ " to 1" rounded).
- 172.5-177.0- Slate, green banding, pyrite and chalco (banding at 70 degrees to core axis).
- 177.0-247.0- Conglomerate, quartz pebbles and fragments chalco etc.
- 247.0-260.0- Keewatin, (Sollition 15 degrees to core) grey granite gneiss.

HOLE STOPPED 260' (Oct. 11 at 12 a.m.).

ECONOMIC

- 30-31.9 - Broken core.
- 39.9 - Quartz fragments surrounded by pyrite.
- 66.5 -78 - Broken core.
- 78.6 -78.9 - Pyrite, chalco bands.
- 100.1-100.5 - Mud seam, (4")
- 100-105 - Radio-active - Sample #58 - 0.025 Uz08
59 - 0.020 "
60 - 0.024 "
- 153-172 - Chalco, pyrite, massive and disseminated.
- 232.5-234.5 - Lost core.

GEIGER COUNTER READINGS

<u>FOOTAGE</u>	<u>BACKGROUND</u>	<u>READING</u>	<u>TIMES BACKGROUND</u>
0-25 -	12 - 15	20	1 $\frac{1}{2}$
25-50 -	"	20	1 $\frac{1}{2}$
50-100 -	"	20-25	2
100-115 -	"	30-35	3
115-125 -	"	20-25	2
125-225 -	"	20	1 $\frac{1}{2}$
225-260 -	"	15-20	1

HARRISON HIBBERT MINES LIMITED, TURNER TOWNSHIP DRILLING

Diamond Drill Hole # 5

LOCATION - Claim # 77157

Date started - October 12 (noon)
Date stopped - October 13 (5 p.m)

DIP Vertical

HOLE DIST. 145.0' AZ - 0

GEOLOGY

- 0-7 - Casing
- 7-114 - Quartzite and greywacke, some pebbles, pyrite.
- 114-119 - Quartzite (almost slate) green, pyrite and chalco.
- 119-141 - Coarse quartz conglomerate in quartzite matrix,
heavy chalco.
- 141-145 - Slate green (banding 7 degrees to core axis).

HOLE STOPPED at 145'

ECONOMIC

- 33 - 36 - Banded greywacke, pyrite.
- 41 - 47 - Broken core.
- 97 - 99 - Lost core.
- 55 - 65 - Radio-active zone.

GEIGER COUNTER READINGS

<u>FOOTAGE</u>	<u>BACKGROUND</u>	<u>READING</u>	<u>TIMES BACKGROUND</u>
0 - 33	12	15 - 20	
33 - 35	"	25 - 35	
35 - 50	"	20 - 25	
50 - 60	"	25 - 30	
60 - 62	"	35 - 40	
62 - 75	"	20 - 25	
75 - 145	"	15 - 20	

HARRISON HIPERT MINES LIMITED, TURNER TOWNSHIP DRILLING

Diamond Drill Hole # 9

LOCATION - Claim # 77157 Date started Wed. Oct. 27/54.
Date stopped Fri. Oct. 29/54.

DIP - Vertical

ELEVATION - AZ - Zero

HOLE DIST. - 326'

GEOLOGY

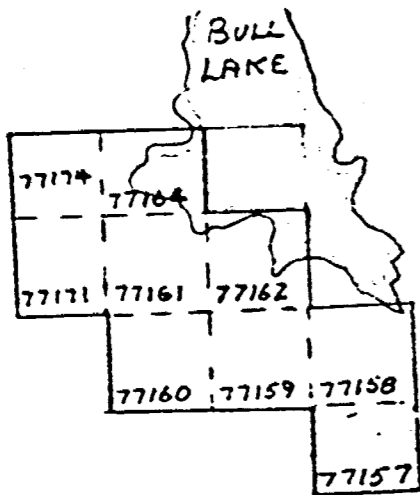
4-136 - Quartzite and greywacke, fine grained, pyrite,
grey few conglomerate pebbles.
136-154 - Quartzite, green, pyrite bands.
154-157 - Slate or basalt dike ? (45 deg.).
157-172 - Quartzite.
172-175 - Greywacke gray pebbles.
175-212 - Quartzite some greywacke, micro conglomerate.
212-224 - Quartzite light green banded (slatey).
224-241 - Coarse quartz conglomerate, blue, (90 deg. qtz.).
241-252 - Coarse quartz conglomerate in green matrix, sulphides.
252-300 - Brecciated quartz (80% qtz.) fobation 20 deg. (Keewatin?)
300-326 - Keewatin, fobation 20 deg. to core axis.

ECONOMIC

252-300 - Quartz sheared and mineralized similar to Renabic ore
possible gold structure.
Radio-active zone 175- 185.

GEIGER COUNTER READINGS

<u>FOOTAGE</u>	<u>BACKGROUND</u>	<u>READINGS</u>	<u>TIMES BACKGROUND</u>
0-25	10 - 12	12 - 15	
25-121	"	"	
121-122	"	15 - 20	
122-142	"	15	
142-143		20	
143-172		15	
172-175		20	
<u>175-185</u>		<u>30 - 35</u>	
185-200		25 - 30	
200-212		20 - 25	
212-326		15 - 20	



TURNER TWP
1" = 1/2 Mi.

