



41P03NW0020 12 MARSHAY

010

Diamond Drilling

Township of MARSHAY

Report No: 12

Work performed by: W.H. Nichol

Claim No	Hole No	Footage	Date	Note
91473	1	57.0'	Oct/56	
	2	60.0'	"	
	3	83.0'	"	
	4	82.0'	"	
	5	40.0'	"	
	6	52.0'	"	
91473	1	500.0'	"	
91476	7	100.0'	"	
	8	100.0'	"	
91473	1	490.0'	Sept/58	(91476)

10 dth.

1564'

1664

Notes:

W. H. NICHOL
Lumber & Building Contractor
NORTH BAY, ONTARIO

N *Marshall Loop*

CLAIM # 91473

granodiorite formation

*quartz stringers in granodiorite formation 20 to 60' wide E
Copper mineralization throughout hole with some magnetite, hole drilled north at 65° angle*

granodiorite formation

DD HOLE 4131200 ↑

CNR. RY

W. H. Nichol

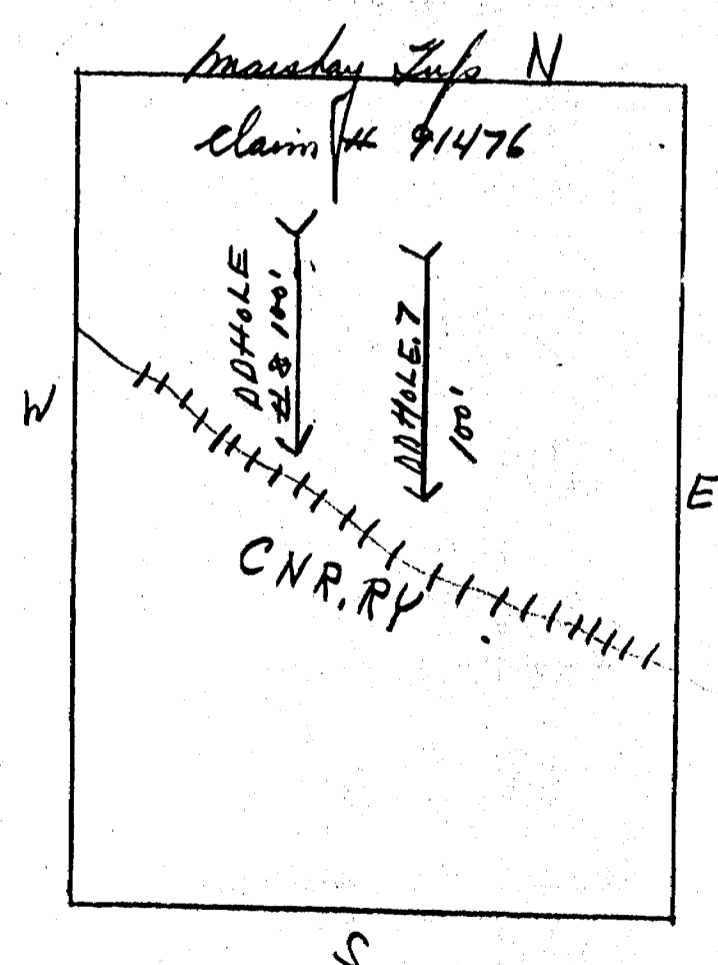
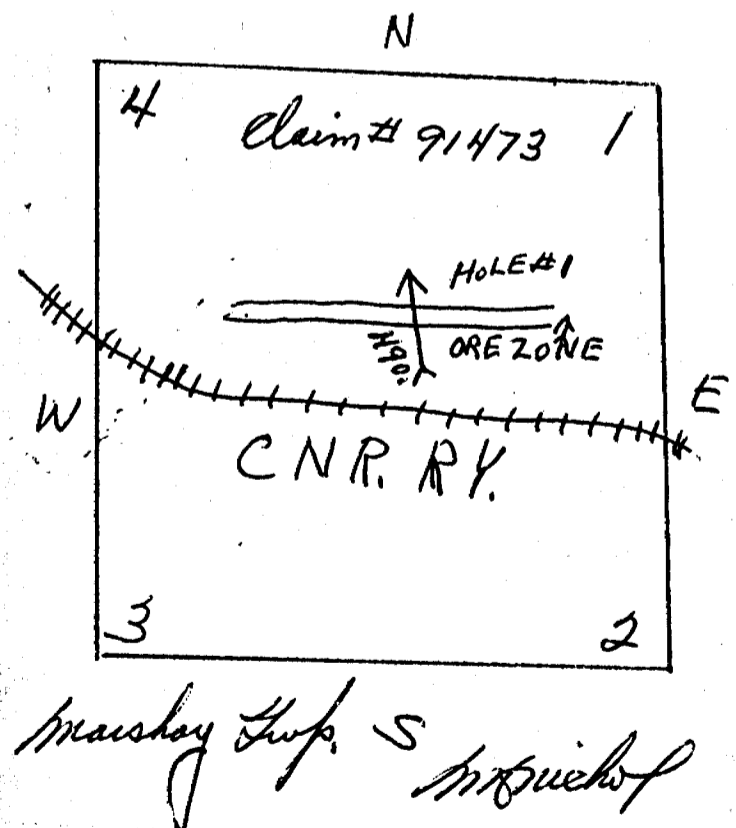
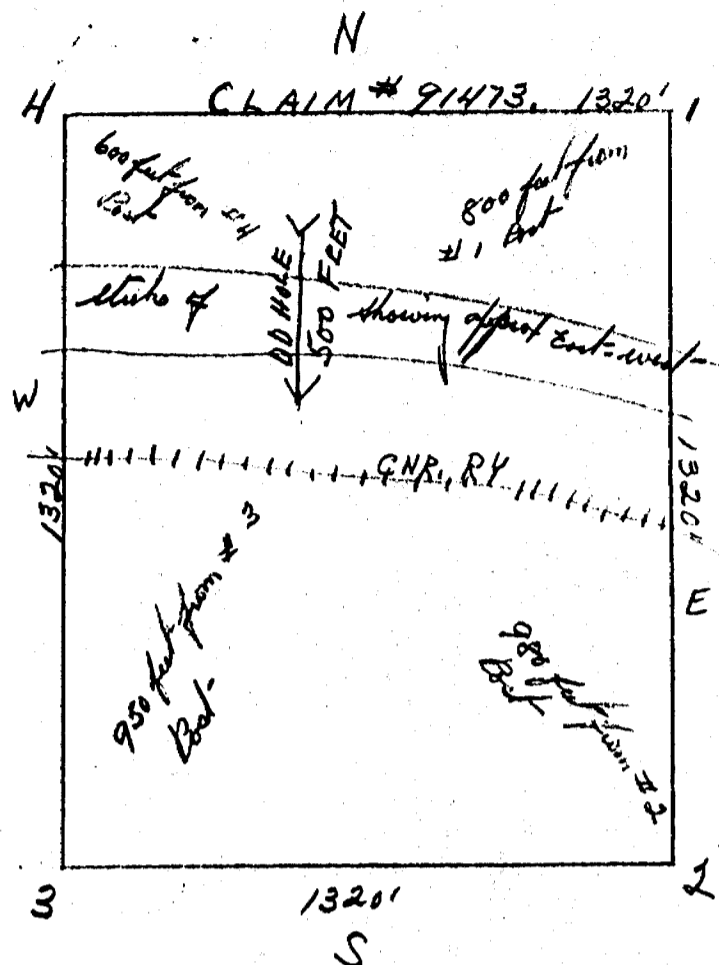
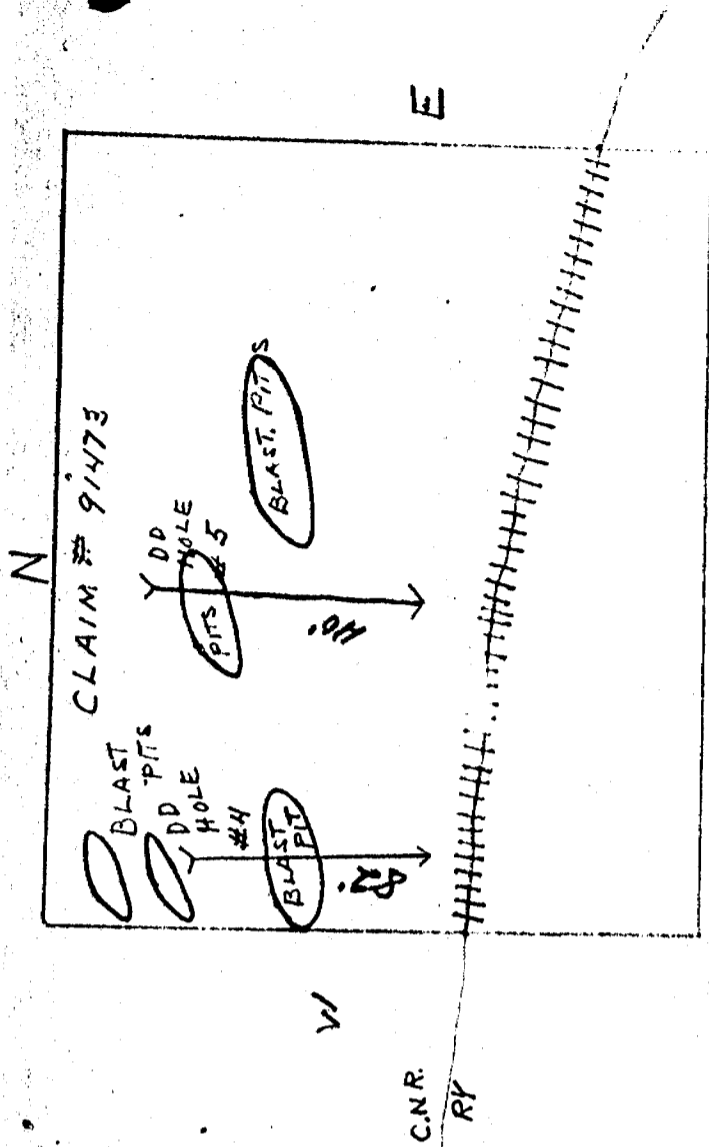
4

W

3

2

5

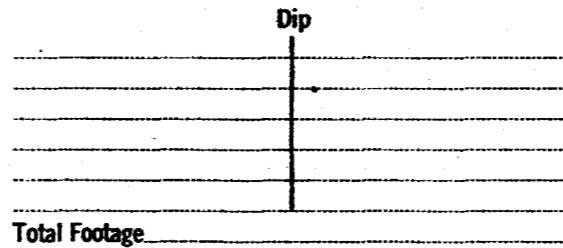


DIAMOND DRILL RECORD

Hole No. _____ Sheet No. _____

Property Location Merrick's Camp
Graysay Camp
East of Sutherland

Latitude _____
 Departure _____
 Bearing North South



Elev. Collar _____
 Datum _____
 Date Started _____
 Date Completed _____
 Drilled by _____
 Logged by _____

	Footage		Formation	Sample Number	Sample Footage	Sample Width	Gold Sample	Gold Sludge	Remarks
	From	To							
hole #1	1'	57'	Pyrochlore & Sulfate & Calcite stringers, Calcopysite, Mineralization from 16' to 45' depth						
" 2	1'	60'	Pyrochlore & Sulfate stringers						
" 3	1'	83'	Scattered pyrochlore for few feet length Sphalerite & pyrochlore with quartz stringers & killed Calcopysite.						
" 4	1'	82'	Pyrochlore & Sulfate 1 to 30' depth. Green stone 30' to 42' depth.						
" 5	1'	40'	Scattered Calcopysite stringers Green stone 30' to 40' depth.						
" 6	1'	57'	Scattered Calcopysite to 30' Pyrochlore 30' to 57' Green stone & Calcopysite mineralization throughout						
Holes drilled approx North South at 45°									

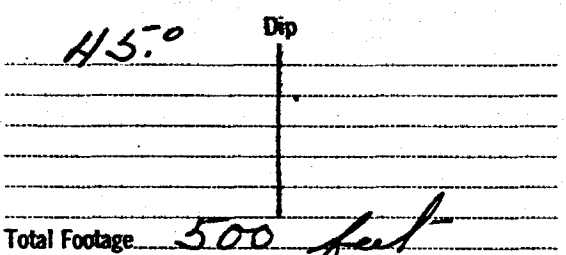
Date of Examination Oct-10/1956

Merrick's

DIAMOND DRILL RECORD

Hole No. 1 Sheet No.

Property W. H. Nichols
 Location Marshall Sup. Claim #
91473
 Latitude _____
 Departure _____
 Bearing _____



Elev. Collar _____
 Datum _____
 Date Started Sept 1st 1957
 Date Completed Sept 15th 1957
 Drilled by W. H. Nichols
 Logged by W. H. Nichols

Hole 1

From	Footage		Formation	Sample Number	Sample Footage	Sample Width	Gold Sample	Gold Sludge	Remarks
	To								
1'	500		<u>Diabase formation with quartz & calcite stringers. Section calcopropylite from 150 to 400 feet. Ad. propyl 3' of copper from 445 to 450 feet. (Total propyl 150 ft.)</u>						

Date of Examination Oct 15 1957

W. H. Nichols

DIAMOND DRILL RECORD

Hole No. _____ Sheet No. _____

Property Morgan L.
 Location Marshall Gap
Dist. of Sulphur Claims 91476

Latitude _____
 Departure _____
 Bearing _____

Dip

Total Footage _____

Elev. Collar _____
 Datum _____
 Date Started _____
 Date Completed _____
 Drilled by _____
 Logged by _____

DD
hole
7

DD
hole
8

Footage		Formation	Sample Number	Sample Footage	Sample Width	Gold Sample	Gold Sludge	Remarks
From	To							
1'	100'	<i>Heavy quartz & quartzite stringers with copper mineralization throughout entire core</i>						
1'	100'	<i>Heavy quartz & quartzite stringers with copper mineralization throughout entire core</i>						

Date of Examination _____

DIAMOND DRILL RECORD

Hole No. 21 Sheet No.

Property Location M. C. Wright / Marbury Cup
 Latitude _____
 Departure _____
 Bearing _____

Dip

Total Footage 1190'

Elev. Collar _____
 Datum _____
 Date Started Sept - 1st - 1958
 Date Completed Sept - 15 - 58
 Drilled by M. C. Wright
 Logged by M. C. Wright

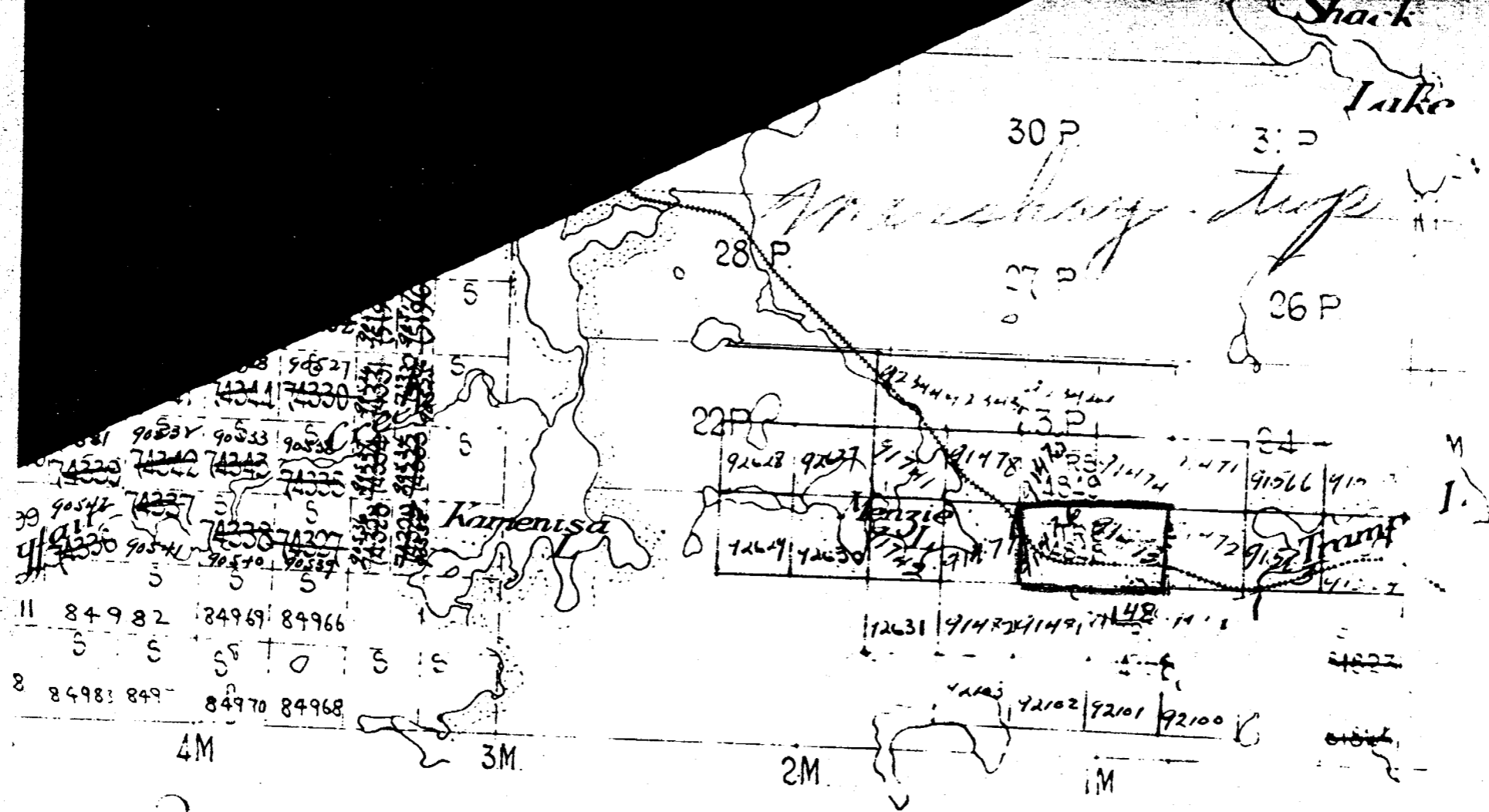
Footage		Formation	Sample Number	Sample Footage	Sample Width	Gold Sample	Gold Sludge	Remarks
From	To							
1'	1190'	<i>Granodiorite formation quartz - stringers located from 112' to 58 feet - some stringers with upper mineralization of 0.80 oz. Au per ton. No gold was recovered for full length but not of commercial grade.</i>						

Date of Examination Sept 20/58

M. C. Wright

Shack
Lake

Manuscript



90821	90822	90823	90824	90825	90826	90827	90828	90829	90830
74331	74332	74333	74334	74335	74336	74337	74338	74339	74340
90541	90542	90543	90544	90545	90546	90547	90548	90549	90550
74201	74202	74203	74204	74205	74206	74207	74208	74209	74210
84982	84983	84984	84985	84986	84987	84988	84989	84990	84991
84969	84970	84971	84972	84973	84974	84975	84976	84977	84978
84968	84969	84970	84971	84972	84973	84974	84975	84976	84977

92442	92443	92444	92445	92446	92447	92448	92449	92450	92451
91478	91479	91480	91481	91482	91483	91484	91485	91486	91487
91566	91567	91568	91569	91570	91571	91572	91573	91574	91575
91478	91479	91480	91481	91482	91483	91484	91485	91486	91487
91478	91479	91480	91481	91482	91483	91484	91485	91486	91487
92102	92103	92104	92105	92106	92107	92108	92109	92110	92111

052-215

SCOTIA