



Diamond Drilling

010

Township of STULL

Report N<sup>o</sup>: 11

Work performed by: Metron Exploration

Claim N <sup>o</sup>	Hole N <sup>o</sup>	Footage	Date	Note
S 213822	1	90.0'	Jan/71	(1)
S 213821	2	642.0'	Jan/71	(1)

Notes:

(1) #20-71

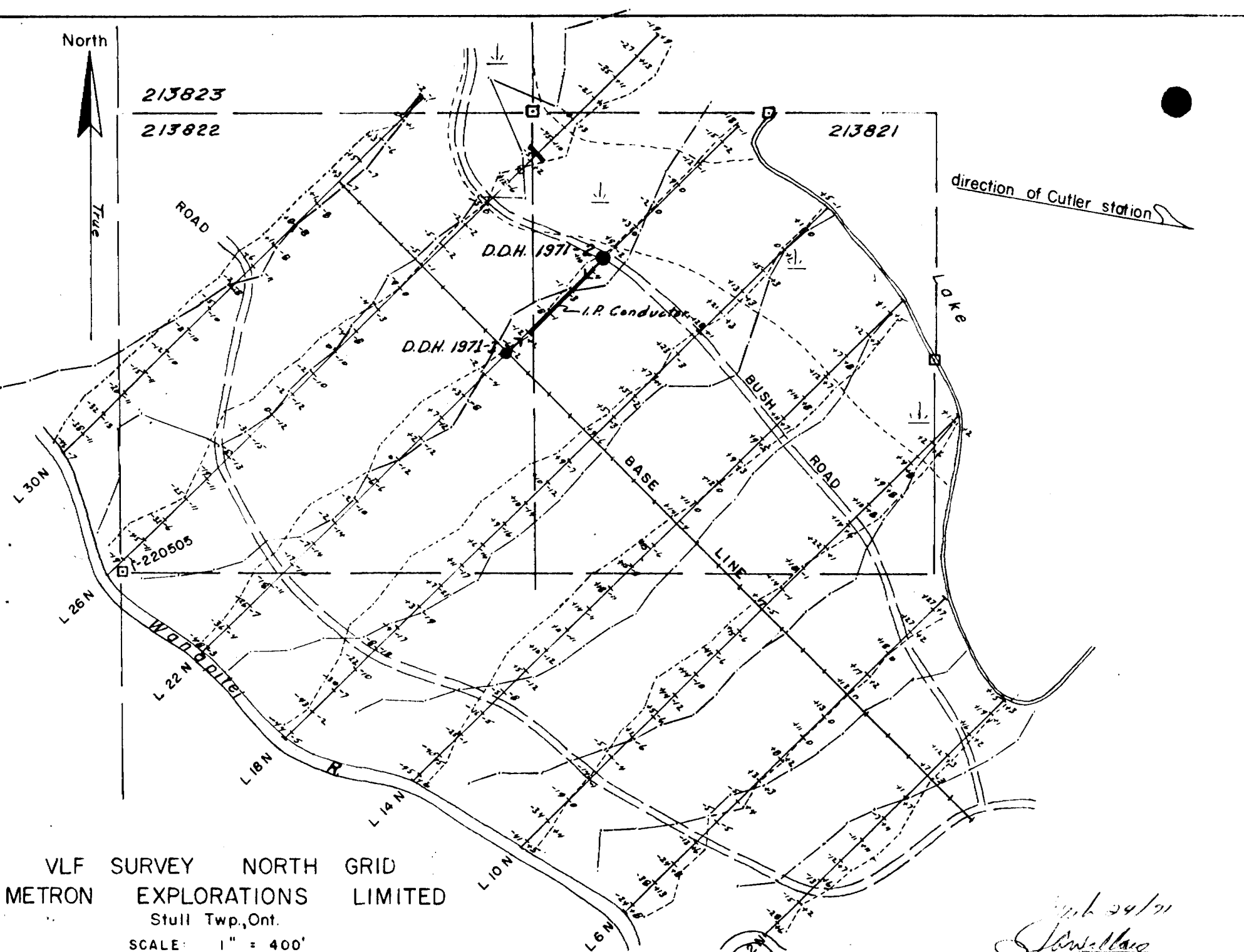
North

213823

213822

213821

direction of Cutler station



VLF SURVEY NORTH GRID  
 METRON EXPLORATIONS LIMITED  
 Stull Twp., Ont.  
 SCALE: 1" = 400'

Feb 24/70  
*J. G. Willars*  
 J. G. WILLARS FEB. 1970

DIAMOND DRILL LOG

D. D. HOLE NO. 1971 - 2

PROPERTY METRON EXPLORATION LTD. (Claim No. 213822)

PAGE 1

(Holder option)

Stull Top., Ont.

LOCATION 250' E., 140' S of 1 - 213822

DEPTH OF HOLE 612'

COLLAR: LAT. L 22 N

STARTED Jan. 31, 1971

DEP. 150 MK

COMPLETED Feb. 11, 1971

ELEV. Surface

DRILLED BY Barron D.D.

BEARING S 150 W

Core size EXT

DIP - 58.5°

1971 - 1 aborted after 90' overburden from L 22 N at Page 14m drilled N 15° E at -45°.

FROM	TO	DESCRIPTION	SAMPLE NO.	CORE FT.
0	70	CASING		
70	259.5	QUARTZITE Very hard, pink rock with brownish sections. Well fractured in places. Lost water and encountered cobbles at 230' - 240' and cemented.		
259.5	291	DIORITE Well altered mottled green white diorite rock, nearly schistose by shearing.		
291	431	QUARTZITE As above at 70' - 259.5'. From 310' - 340' is yellow and very well fractured. Ground core from 168' - 169', 208' - 210', 233' - 240', 259' - 262', 301' - 322', 345' - 346', 376' - 381'. From 100' on the core is not so blocky.		
431	495	MINERALIZED SECTION From 431' - 460' cherty, near and veinlets of pyrite scattered sparsely through the core mostly at 35° to the core axis. From 481' - 491' is as above containing irregular veinlets that look intrusive.		
495	612	QUARTZITE From 499.5' - 501' is silicified shear at 30° to the core axis. The rock grades to a white and grey quartzite. From 551' - 552' narrow silicified shear at 10° to the core axis.		
	612	END OF HOLE.		

Core specimens at 70', 95', 119.5', 140', 150', 175', 210', 225', 253', 278', 303', 328', 353', 378', 403', 428', 453', 478', 508', 533', 558', 582.5', 608', 632.5'

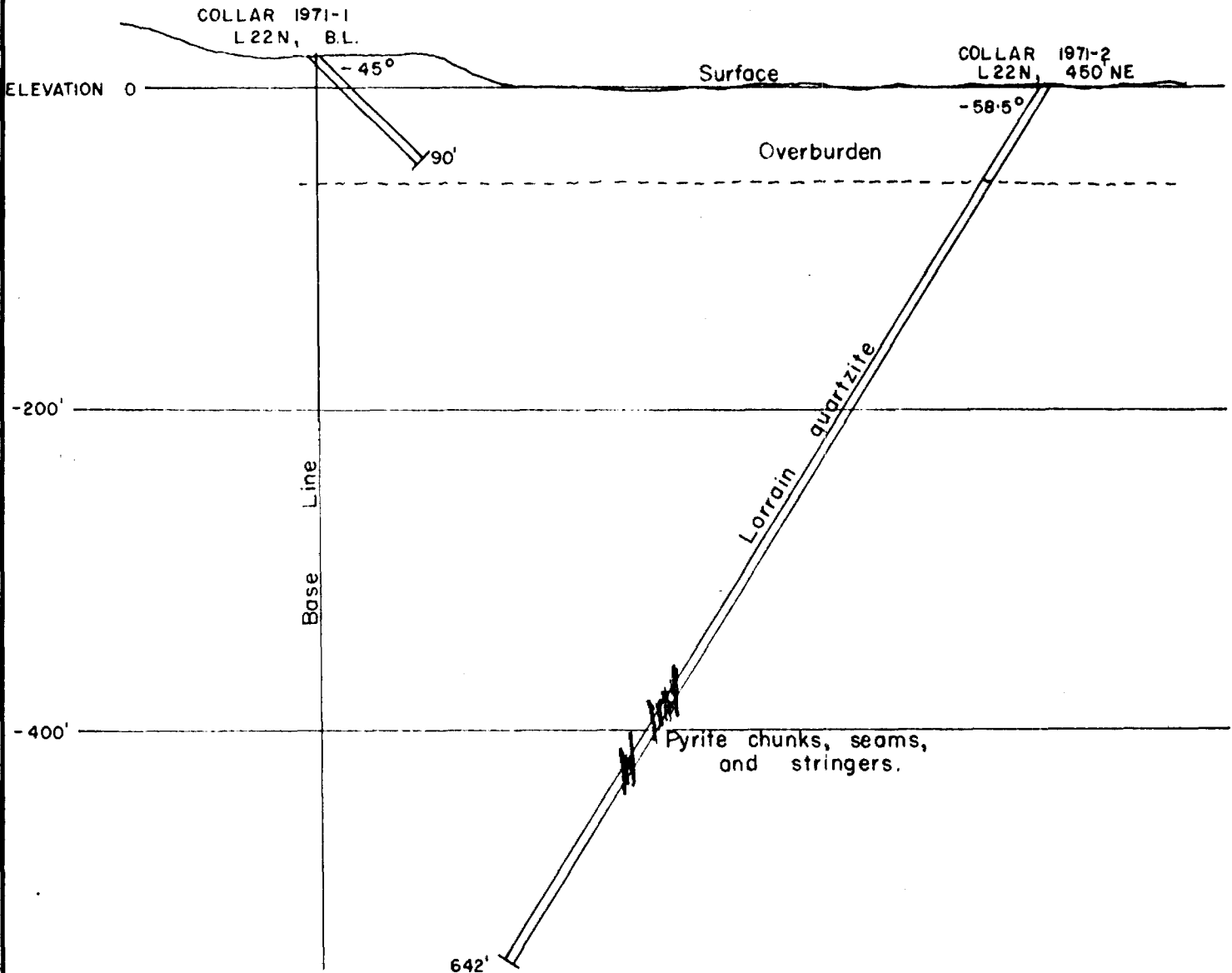
# 20/71 Stull Top.  
Metron Expl. Ltd

SIGNED *J. G. Willars*  
JACK G. WILLARS B.A.S.C., P. ENG.

S 45° W

N 45° E

I. P. Conductor



PROFILE SECTION D.D.H.'S 1971-1 & 2  
METRON EXPLORATION LTD.  
HOLDEX OPTION  
CLAIM 213821 - STULL TWP, ONT.

*J. G. Willors*

J. G. Willors B.A.Sc., P.Eng. Feb. 1971.