



41P07SW0003 10 STULL

010

Diamond Drilling

Township of STULL

Report N^o: 10

Work performed by: Metron Exploration Limited

Claim N ^o	Hole N ^o	Footage	Date	Note
S 213746	2	88.0'	June/70	
	3	603.5'	June/70	
	4	795.0'	June/70	
S 213747	1	495.0'	May/70	

Notes:

DIAMOND DRILL LOG

D. D. HOLE NO. 2

PROPERTY METRON EXPLORATION LIMITED

PAGE 1

LOCATION Stull Twp. - Claim 213746 (150' E, 350' W of A post)

DEPTH OF HOLE 88'

COLLAR: LAT. L.B.H.

STARTED June 6, 1970.

DEP. 760' E

COMPLETED June 12, 1970.

ELEV. Surface

DRILLED BY Barron D.D.

BEARING N 70° E

Core Size AT

DIP -150

FROM	TO	DESCRIPTION	SAMPLE NO.	CORE FT.
0	88'	OVERBURDEN! Many coarse boulders, no ledge attained. Hole abandoned.		
	88'	END OF HOLE.		

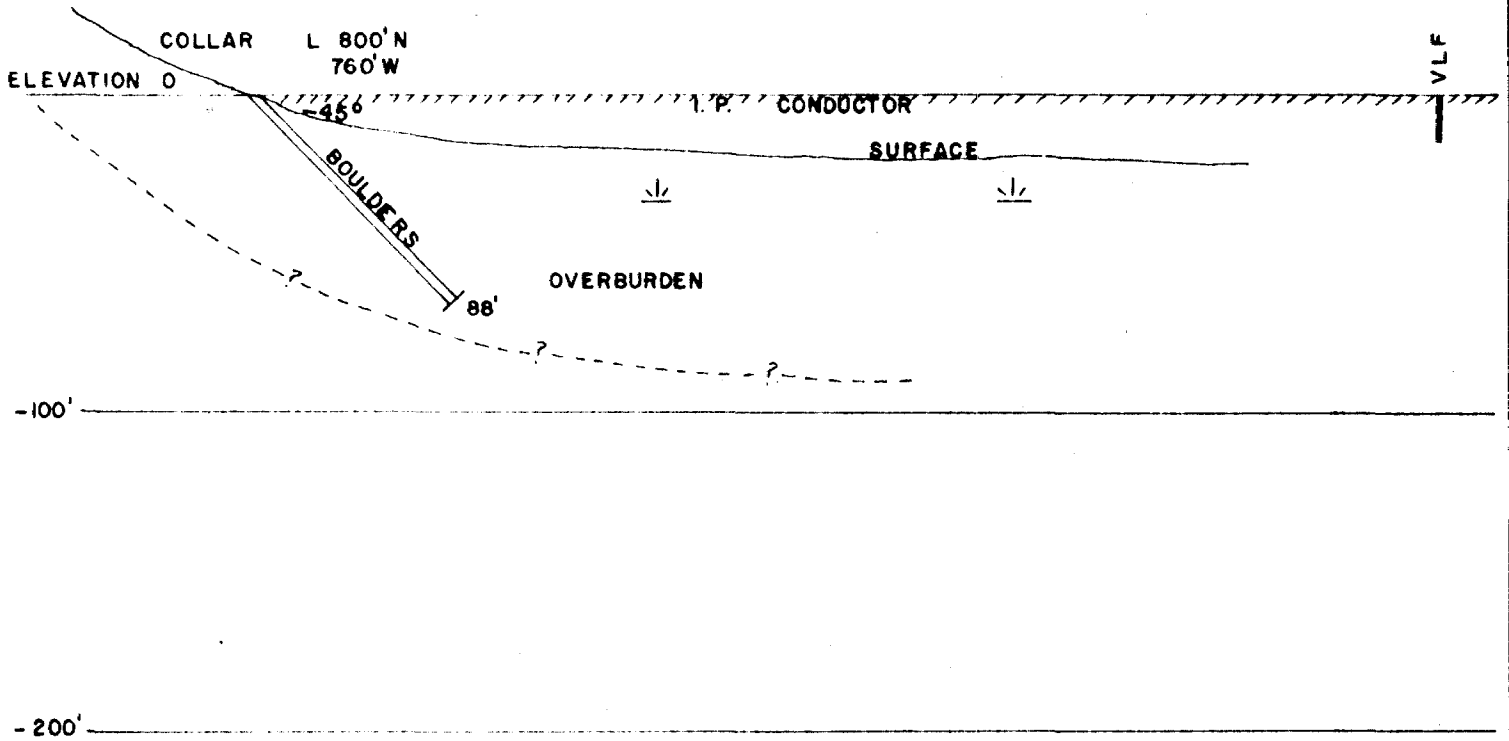
SIGNED



JACK G. WILLARS B.A.S.C., P. ENG.

N 70° E

VLF CONDUCTOR



METRON EXPLORATION LTD.
STULL TWP., ONT.

PROFILE SECTION D.D.H. NO. 2
(looking north)
Scale: 1" = 60'

J. G. Willars June 1970

DIAMOND DRILL LOG

D. D. HOLE NO. 3

PROPERTY METRON EXPLORATION LIMITED

PAGE 1

LOCATION Staff Top. - Claim 213746 (660' S, 680' W of #1 post)

DEPTH OF HOLE 603.5'

COLLAR: LAT. 130° N

STARTED June 13, 1970

DEP. 1230' W

Tests at 200' - 43° 30'
100' - 41°

COMPLETED June 16, 1970

ELEV. Surface

DRILLED BY Barren D.D.

BEARING South

Core Size AXT

DIP -41°

FROM	TO	DESCRIPTION	SAMPLE NO.	CORE FT.
0	11'	CASING		
11'	53'	GAEBRO Medium to coarse grained, dark green, massive looking rock with 10% red feldspar, minor fine grained sulphide particles, gradational contact, fairly uniform throughout.		
53'	86'	GRANODIORITE An increase in red feldspar to 50%, and 50% green mafic grading to 60% red feldspar as the hole deepens. Minor amounts of pyrite and chalcopyrite specks.		
86'	99'	GAEBRO as above		
99'	102.8'	FEISITE Fine grained, pink, hard dike rock at 15° to the core axis and with darker contact areas.		
102.8'	195'	GAEBRO as above With minor fine grained pyrite and chalcopyrite specks At 133' 1" grey/pink felsite at 80° to the core. At 175.3' 1.5" shear The bottom 20' is finer grained and fractured with fractures filled with white calcite and white quartz.		
195'	300'	SEDIMENTS ? metamorphosed arkose. A granular, fine to medium grained, reddish grey coloured rock with magnetite specks.		
300'	452'	SEDIMENTS As above-starts to get coarser grained at 300' and the magnetite particles are coarser and more evident. There are scattered specks of chalcopyrite present. From 375.5' - 377' serpentine in shearing with 1" barite at the top.		
452'	603.5'	GAEBRO Granular textured rock with epidote streak and veins in irregular attitudes, but at high angles to the core. No magnetite observed. Coarse grained and getting coarser from 515' down, containing greenish white feldspar and pink feldspar and hornblende. At 565.5' 1/2" white quartz at 30° to the core axis.		
	603.5'	END OF HOLE.		

As cement rock representative specimens taken at 16', 13', 68', 100', 122', 117', 172', 197', 221', 216', 273', 298', 323', 348', 373', 398', 423', 448', 473', 498', 523', 548', 573', 598'.

SIGNED

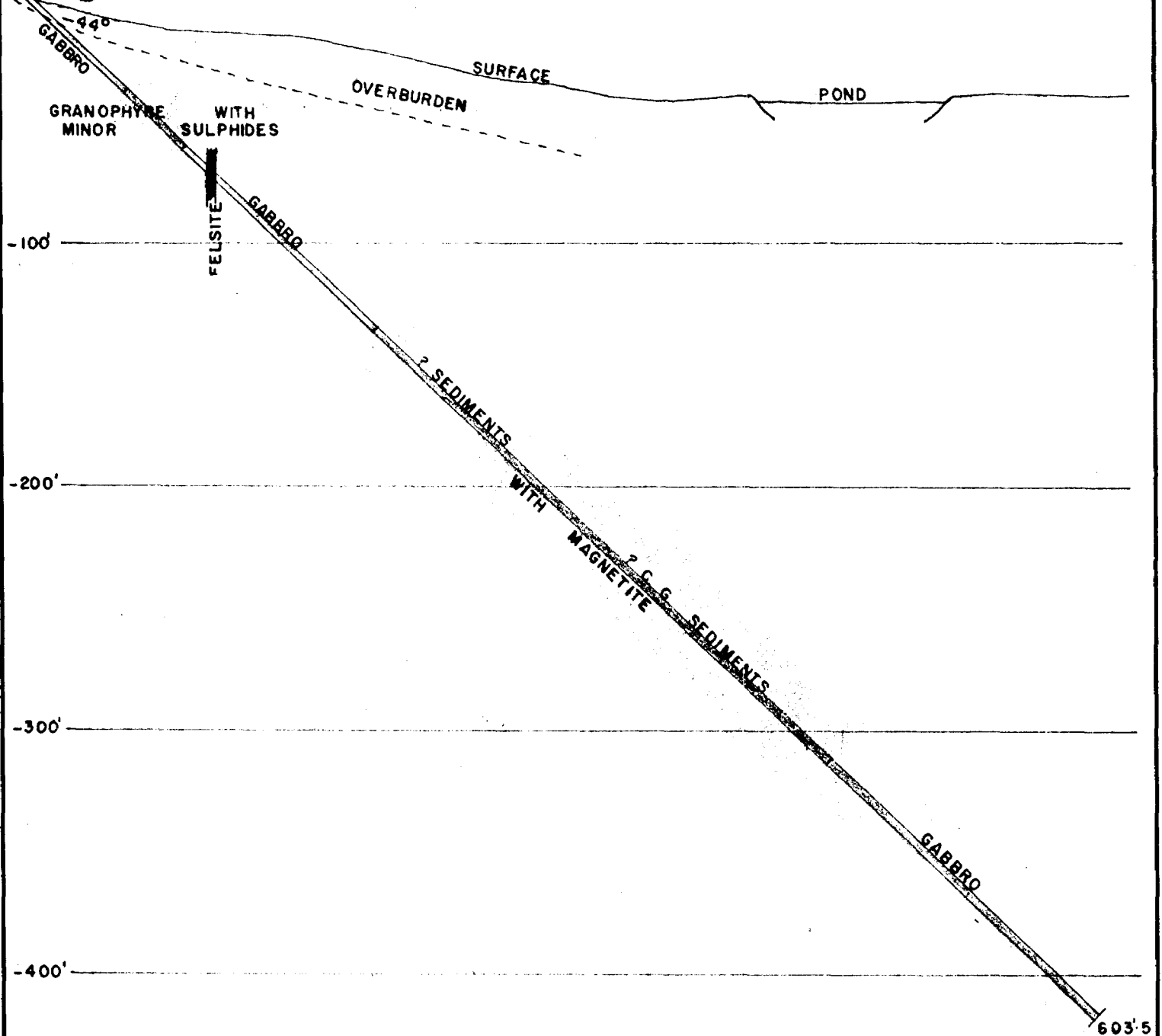
Jack G. Willars

JACK G. WILLARS B.A.S.C., P. ENG.

COLLAR 430'N
230'W

ELEVATION 0

SOUTH



METRON EXPLORATION LTD.
STULL TWP, ONT.

PROFILE SECTION D.D. H. NO. 3
(looking east)

Scale : 1" = 60'

J. G. Willars June, 1970

DIAMOND DRILL LOG

D. D. HOLE NO. 4

PROPERTY METRON EXPLORATION LIMITED

PAGE 1

LOCATION Stull Twp. - Claim 213716 (10°S, 230°W of #1 post)

DEPTH OF HOLE 795'

COLLAR: LAT. L 6 N

STARTED June 22, 1970.

DEP. 700' W

Tests at 200' - -1.8°

COMPLETED June 30, 1970.

ELEV. Surface

400' - -1.6°

DRILLED BY Barron D.D.

BEARING N 70° E

600' - -1.6, 5°

Core Size ATF

DIP -52°

FROM	TO	DESCRIPTION	SAMPLE NO.	CORE FT.
0	25'	CASINO		
25'	28'	FELSITE Fine grained, hard, pink, finely fractured rock.		
28'	58'	GABBRO Contact zone, fine grained, black to dark green, grading to medium and coarse grained rock with red jasper and white feldspar. At 35' - 1" feldspar with pyrite. From 47.2' - 49' brown felsite with red jasper phenocrysts and pyrite.		
58'	176'	GABBRO Gritty medium grained rock with white and pink feldspar in a dark green matrix. Some epidote alteration, fine pyrite, specks of chalcopryrite scattered through the rock, slightly magnetic. From 95'-105' is fractured and filled with quartz-carbonate. At 125' - 1" felsite dike at 70° to the core axis. From 131' - 151' there are irregular, narrow white quartz-carbonate stringers. From 156' - 159' some pyrite and chalcopryrite.		
176'	181'	GRANOPHYRE Grey base colour with medium grained grits of pink feldspar and white quartz. Questionable ghostly banding at 45° to the core axis.		
181'	189'	FELSITE Fine grained granitic, pink dike rock cutting the core at 45° Chilled contacts.		
189'	231'	GRANOPHYRE Resembles in part the sediments of Holes No. 1 and 3. White quartz-feldspar spots in a black fine grained matrix cut by irregular narrow quartz-carbonate stringers and epidotized in seams and spots. Fine pyrite impregnated and sparse chalcopryrite spots.		
231'	378'	GRANOPHYRE Carbonatized black matrix rock containing medium grained grits of pink feldspar and quartz and 1/4" size grains of magnetite. Fine white quartz-carbonate seams in fractures. Bottom contact is intrusive with trap dike. At 376.5' - 3" quartz-carbonate with pyrite and minor chalcopryrite. Up to 309' ghostly vuggy areas with massive epidote spots. Spots of pyrite. Some red feldspar chunks.		

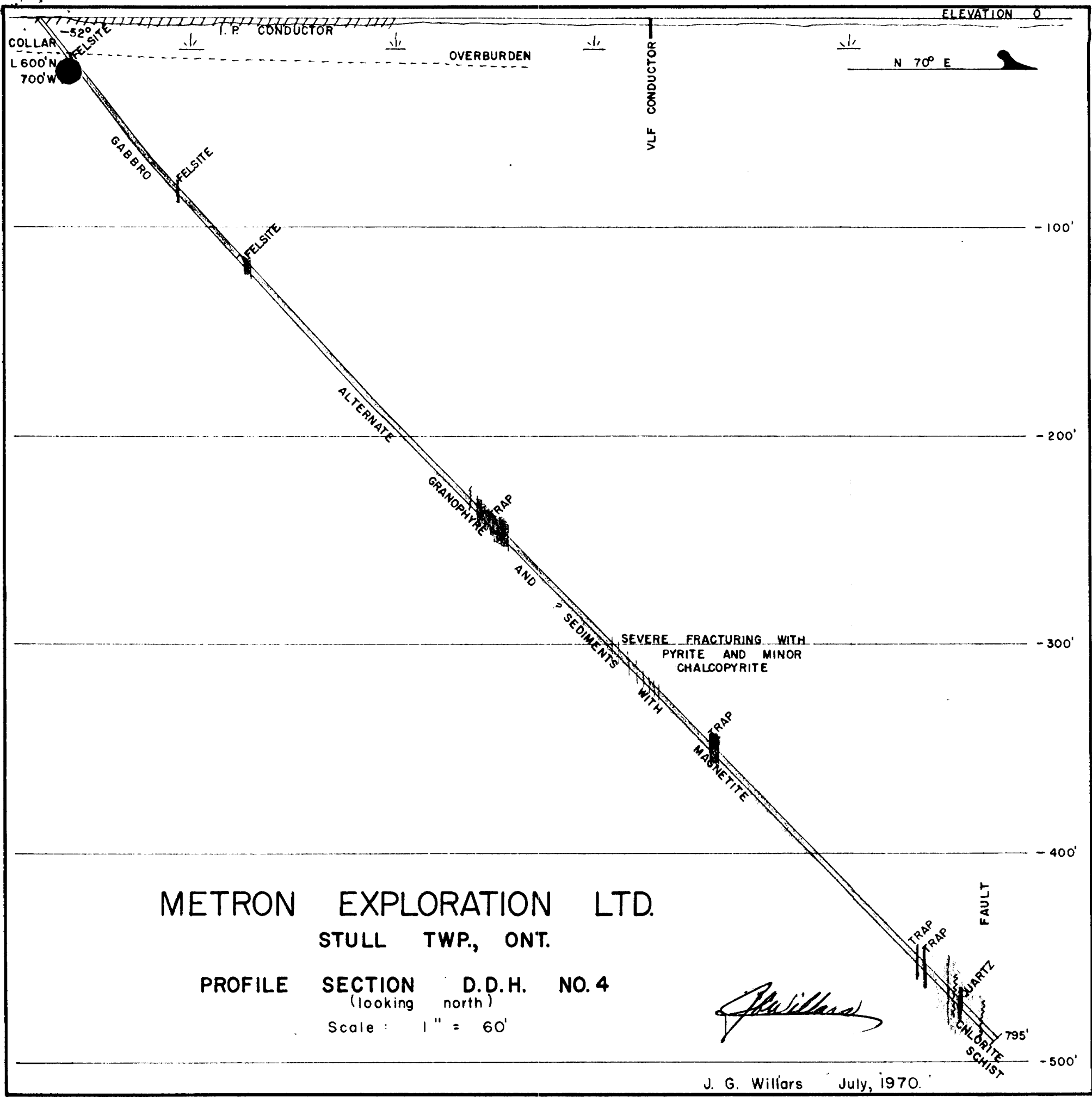
SIGNED *J. Willars*
 JACK G. WILLARS B.A.S.C., P. ENG.

FROM	TO	DESCRIPTION	SAMPLE NO.	CORE FT.
378'	403'	TRAP DIKE Very fine grained, hard, black rock, containing sparse feldspar phenocrysts and with chilled contacts at 15° to the core axis. Non-magnetic.		
403'	533'	GRANOPHYRE As above at 211'-378', but badly fractured and containing more quartz-carbonate veins with massive pyrite and chalcopyrite along the contacts. Spots of magnetite coming in at 453'. Pink feldspar and quartz stringers coming in at 486'. At 500' more pyrite appearing.		
533'	677'	? SEDIMENTS or GRANOPHYRE As at 189'-211' resembles that of Holes No. 1 and 3. Medium grained, grey/black, granular, magnetic rock which is moderately fractured and filled with narrow white quartz-carbonate filling. At 599' - 2" breccia at 15° to the core axis. Minor chalcopyrite occurs in spots. At 633' - 6" pink feldspar vein, vuggy, at 60° to the core axis. Some granophyric sections alternating with sediment looking sections.		
677'	674'	TRAP DIKE Black, very fine grained, hard rock with chilled contacts at 30° to the core axis. Bottom at 60°. Very fine pyrite seams included.		
674'	680'	? SEDIMENTS or GRANOPHYRE as above at 533'-677'.		
680'	763'	? SEDIMENTS as above with fine grains of magnetite scattered through the rock and cut by fine seams of white quartz-carbonate. From 711'-712" and 712.6'-713" are trap dikes.		
764'	774'	FAULT Fractured sediments with an increase in the amount of epidote. Breccia fragments.		
774'	776'	FAULT Pinkish quartz, well fractured and brecciated. Contacts sharp at 15° to the core axis. Later fault filling intrusive. Fine chalcopyrite and pyrite on the contacts.		
776'	795'	FAULT Well brecciated green chlorite schist, fractured and crumbly, graphitic. From 787'-795' is ground core.		
795'		END OF HOLE.		
		Assessment work representative specimens taken at 35', 58', 86', 108', 131.5', 151', 176', 201.5', 226', 251', 276', 301', 326', 351', 376', 401', 426', 451', 501', 526', 551', 576', 601', 626', 651', 674', 699', 724', 749', 774', 784'.		

SIGNED



 JACK G. WILLARS B.A.Sc., P. ENG.



ELEVATION 0

COLLAR
L 600' N
700' W

-52°

T.P. CONDUCTOR

OVERBURDEN

VLF CONDUCTOR

N 70° E

GABBRO

FELSITE

FELSITE

ALTERNATE

GRANDOPHYRE TRAP

AND

? SEDIMENTS

SEVERE FRACTURING WITH
PYRITE AND MINOR
CHALCOPYRITE

WITH

MAGNETITE TRAP

FAULT

TRAP TRAP

QUARTZ

CHLORITE SCHIST

795'

METRON EXPLORATION LTD.

STULL TWP., ONT.

PROFILE SECTION D.D.H. NO. 4
(looking north)

Scale: 1" = 60'

J. G. Willars

J. G. Willars July, 1970.

DIAMOND DRILL LOG

D. D. HOLE NO. 1

PROPERTY PETRON EXPLORATION LIMITED

PAGE 1

LOCATION Stall Top. - Claim 2137/7 (350°E, 300°N of #3 post)

DEPTH OF HOLE 103'

COLLAR: LAT. 115° S

STARTED May 30, 1970.

DEP. 100' W

Tests at 60' - 13° 30'

COMPLETED June 14, 1970.

ELEV. Surface

310' - 12° 30'

DRILLED BY Barron D.D.

BEARING N 70° E

Core Size AXI

DIP 16° E

FROM	TO	DESCRIPTION	SAMPLE NO.	CORE FT.	% Cu
0	7.5'	CASING			
7.5'	202.3'	<p>GRANOPHYRE</p> <p>Hard, medium to coarse grained, green, white and pink mottled coloured rock cut by irregularly oriented calcite seams. Pyrite and chalcopyrite scattered throughout, some in calcite seams, some in rock. Some sections are heavier than others. The core is magnetic in scattered sections.</p> <p>91' - 91.4' Shear at 60° to the core axis.</p> <p>100.4' - 100.6' Shear with calcite at 60° to the core axis.</p> <p>Some areas contain less mafic minerals and consequently are lighter in colour and these sections also appear to contain more sulphide mineralization, such as at 92'-163'.</p> <p>From 123' - 123.5' Well banded greenstone inclusion. at 60° to the core axis.</p> <p>From 143.5' - 144' Mildly sheared and filled with quartz-calcite seams.</p> <p>The contact is at 60° to the core axis and is mildly sheared in the bottom 8".</p> <p>SAMPLES : At 7.5' - 18'</p> <p>At 18' - 28'</p> <p>At 28' - 38'</p> <p>At 38' - 48'</p> <p>At 48' - 58'</p> <p>At 58' - 68'</p> <p>At 68' - 78'</p> <p>At 78' - 88'</p> <p>At 88' - 94'</p> <p>At 94' - 99' 3% pyrite & chalcopyrite</p> <p>At 99' - 107'</p> <p>At 107' - 112' 5% pyrite & chalcopyrite</p> <p>At 112' - 124'</p> <p>At 124' - 134'</p> <p>At 134' - 144'</p> <p>At 144' - 154'</p> <p>At 154' - 164'</p> <p>At 164' - 174'</p> <p>At 174' - 184'</p> <p>At 184' - 194'</p> <p>At 194' - 202.3'</p> <p>A composite sample of some pulps was checked for nickel and none was detected.</p>			
			1070	10.5	.13
			1071	10	.10
			1072	10	.08
			1073	10	.02
			1074	10	.11
			1075	10	.07
			1076	10	.03
			1077	10	.05
			1078	6	.09
			1066	5	.17 nil Au tr. Ag
			1079	8	.05
			1067	5	.15 nil Au, Ag
			1080	12	.09
			1081	10	.12
			1082	10	.06
			1083	10	.11
			1084	10	.03
			1085	10	.03
			1086	10	.03
			1087	10	.04
			1088	8.3	.06

SIGNED

Jack G. Willars

JACK G. WILLARS B.A.Sc., P. ENG.

FROM	TO	DESCRIPTION	SAMPLE NO.	CORE FT.
202.3'	328'	<p>SEDIMENTS</p> <p>Severely metamorphosed arkonic rock, fine to medium grained, dark coloured, granular rock with pinkish feldspar and quartz particles 1/16" size, and containing spotty magnetite particles. Fairly uniform in texture and composition. Hematite on calcite seams. From 279' - 299' incipiently brecciated and fractured with irregular feldspar and white calcite filling. An increase in red feldspar at this point.</p> <p>FAULT from 317.4' - 317.8' 2.5" breccia and 1.5" shearing with calcite veins at 60° to the core.</p> <p>From 321' - 328' increase in the amount of fracturing which occurs at irregular angles to the core.</p>		
328'	332'	<p>FAULT</p> <p>Top 2' very badly fractured and sheared rock with red hematite staining. Bottom 2' breccia fragments of quartzite and feldspar in red hematite stained gouge. Excellent recovery for a fault zone.</p>		
332'	195'	<p>QUARTZITE.</p> <p>Very hard, yellowish-pinkish quartzite with sparsely located quartz and jasper pebbles. Probably Huronian (Lorrain) in age. From 332' - 344' irregularly badly fractured quartzite with red hematite stain on fracture planes. Some places are wuggy.</p> <p>At 132.5' 1" breccia with red hematite stain on the fractures.</p> <p>From 163' - 163.8' serpentized fractures at small angles to the core.</p>		
	195'	<p>END OF HOLE.</p> <p>Assessment work representative specimens taken at 12', 41.5', 66', 92', 107', 112', 167', 192', 217', 212', 267', 293', 317', 341', 391', 416', 443', 468', 493'.</p>		

SIGNED


 JACK G. WILLARS B.A.SC., P. ENG.

N 70° E

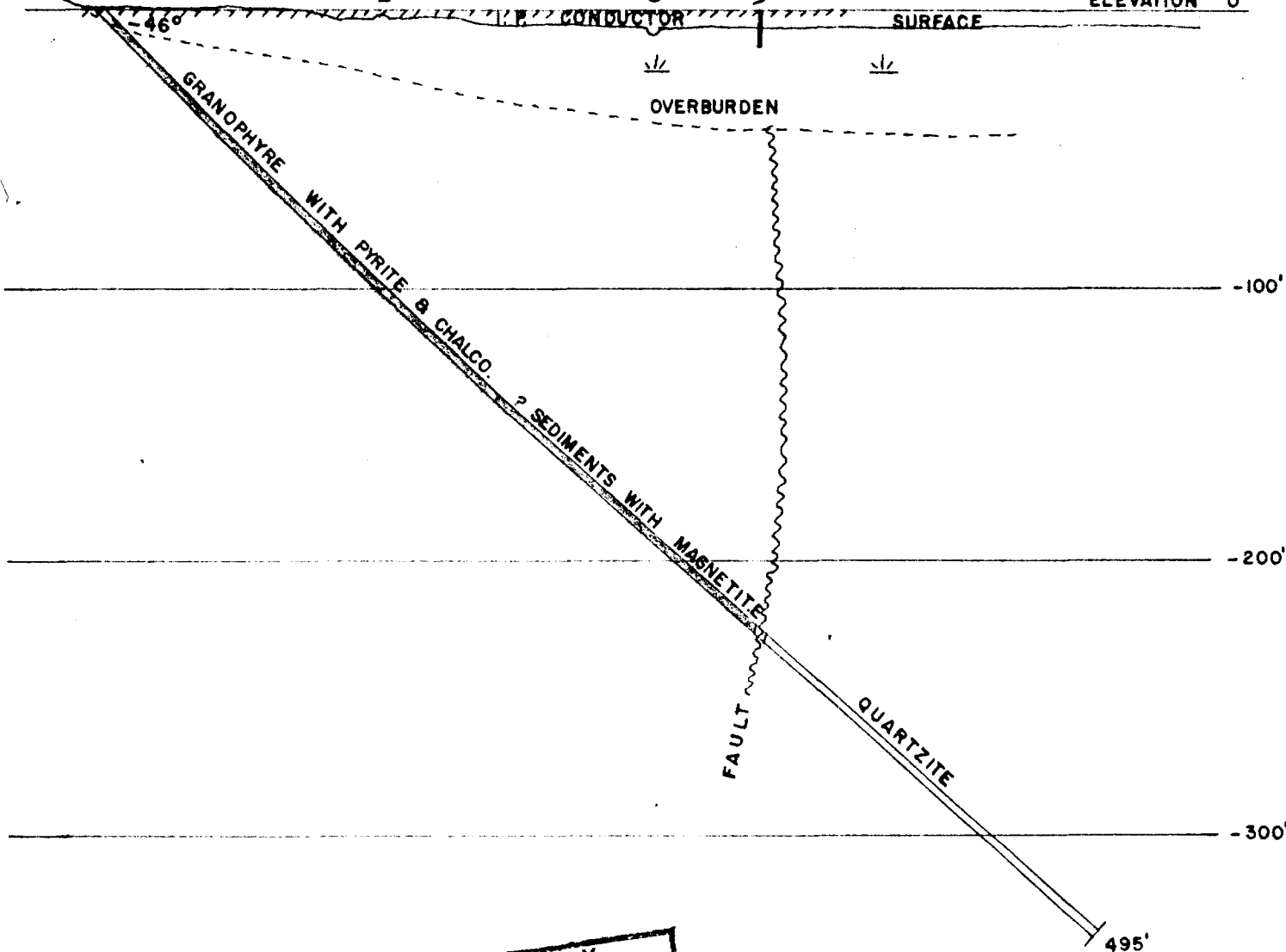
COLLAR L 115° S
400' W

ROAD

CREEK

VLF CONDUCTOR

ELEVATION 0



SUBBURY
MINING DIV.
RECEIVED
JUL 9 1970 P.M.
7 8 9 10 11 12 1 2 3 4 5 6

METRON EXPLORATION LTD.

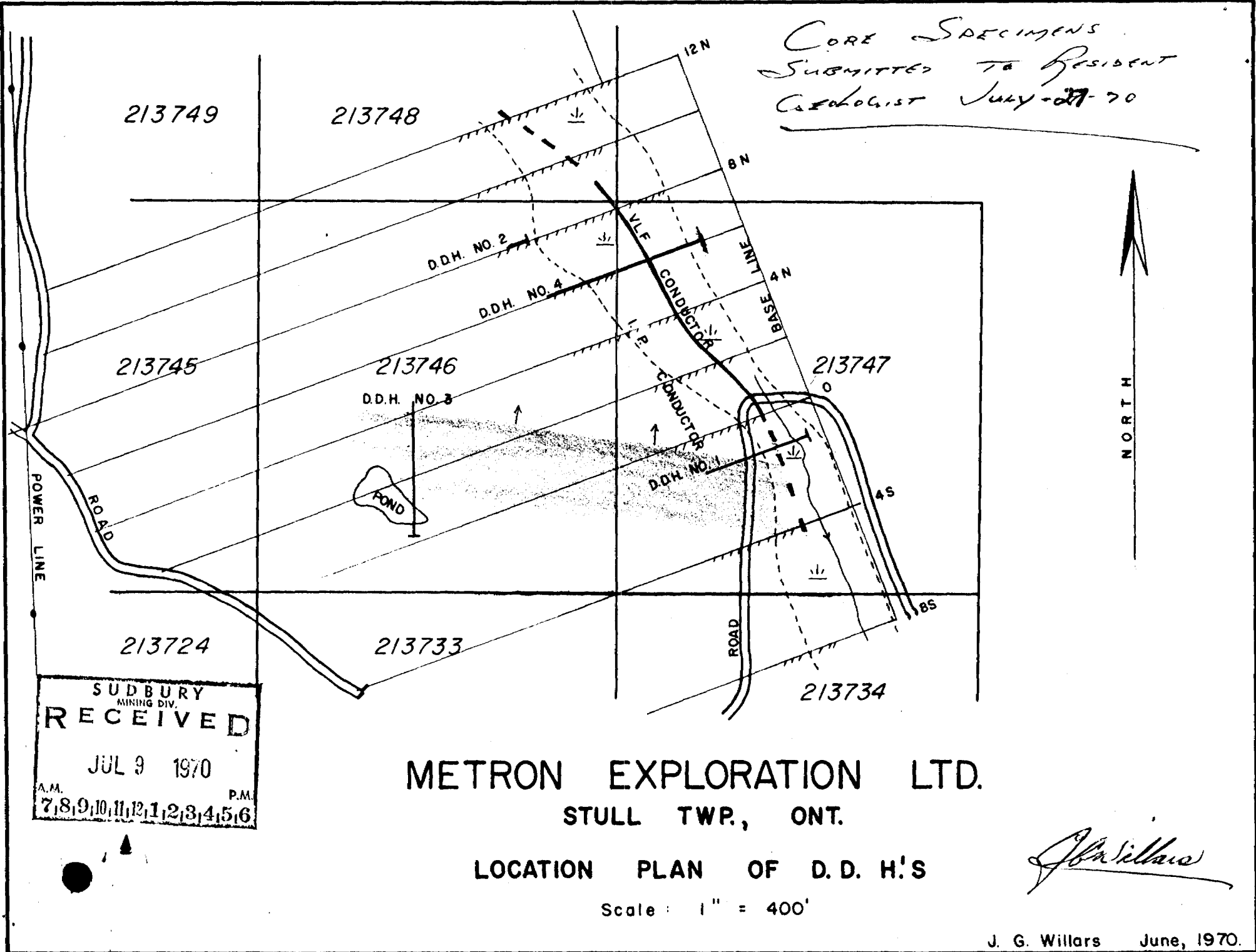
STULL TWP., ONT.

PROFILE SECTION D.D.H. NO. 1
(looking north)

Scale: 1" = 60'

J. G. Willars June, 1970

CORE SPECIMENS
SUBMITTED TO RESIDENT
GEOLOGIST JULY-27-70



SUDBURY
MINING DIV.
RECEIVED
JUL 9 1970
A.M. P.M.
7 8 9 10 11 12 1 2 3 4 5 6

METRON EXPLORATION LTD.
STULL TWP., ONT.

LOCATION PLAN OF D. D. H.'S

Scale : 1" = 400'

J. G. Willars

J. G. Willars June, 1970.