

SAMPLE NUMBERS

Property	Area	Sample No.	Width/m	Description	g/t Au
Honeymoon	New Liskeard	Aug 3/02		Pelangio Mines Inc	
563066	5286003	176137	0.30	Zone F- 0.3m str sh'd zone / 5 cm semi-massive py/qtz in basalt	8.37
(B) 563028	5285982 - (B)	176138	Grab	Trench G water filled, bas / carb vn / py	0.07
(E) " " "	" " " - (E)	176139	Grab	Trench G water filled (trend @ 72 AZ, bas / carb vns / wk dissemin py	0.03
(D) 562879	5285542 - (D)	176140	Grab	Trench B5 + 20m (filled / water); bas / qtz/carb/ch/lm	nil
561911	5285540	176141	1.00	Trench B5 (filled / water) sheared @ 248/80SE, chl mnr qtz	0.05
(C) 562912	5285549 - (C)	176142	Grab	Trench B 3; semi massive py, ~ 6 cm	24.14
" " "	" " "	176143	0.3	Trench B 3; chl bas sample parallel to TR	0.07
528934	5285564	176144	1.00	Trench B2, sheared bas / some semi massive py	0.75
" " "	" " "	176145	Grab	Trench B2, semi massive py / some qtz	4.18
" " "	" " "	176146	1.0	4 m @ 75 AZ from B2, sheared bas	0.05
" " "	" " "	176147	2.0	cont's / abv, sh'd bas / silica, chl, carb, str'd @ 60/85 SE	0.01
" " "	" " "	176148	0.20	Trench B-1, bdr @ edge of tr, qtz-carb, chl in sh'd bas	nil
(A) 5663190	5285741 - (A)	176149	Grab	Outcrop of bleached mafic volc / stwk of carb/qtz & mnr py @ Beaver Pond	0.04
(F) " " "	" " " - (F)	176150	Grab	Tr B - 1 sheared bas / qtz and chl	0.01





Established 1928

Swastika Laboratories Ltd

Assaying - Consulting - Representation

Page 1 of 2

2W-2007-RA1

Assay Certificate

Company: WESTERN PROSPECTING GROUP LTD.
Project: OEX
Attn: W. Roberts

Date: AUG-15-02

We hereby certify the following Assay of 37 Chip samples submitted AUG-06-02 by .

Sample Number	Au g/tonne	Au Check g/tonne
176133	2.67	-
176134	0.59	-
176135	8.71	8.91
176136	3.67	3.57
176137	8.37	-
176138 - (B) UV MAP	0.07	-
176139 - (E) UV MAP	0.03	-
176140 - (D) UV MAP	Nil	-
176141	0.05	-
176142 - (C) UV MAP	24.14	(C) 22.09
176143	0.07	-
176144	0.75	-
176145	4.18	-
176146	0.05	-
176147	0.01	-
176148	Nil	-
176149 - (A) UV MAP	0.04	-
176150 - (F) UV MAP	0.01	-
176151	0.03	-
176152	Nil	Nil
176153	Nil	-
176154	Nil	-
176155	Nil	-
176156	Nil	-
176157	Nil	-
176158	Nil	-
176159	Nil	-
176160	Nil	-
176161	Nil	-
176162	Nil	-

PELANGIO
TUOHODE
PROPERTY

RECEIVED
OCT - 3 2002
GEOSCIENCE ASSESSMENT
OFFICE

One assay ton portion used.

Certified by *Dennis Chantle*

Date: 2002-OCT-04

GEOSCIENCE ASSESSMENT OFFICE
933 RAMSEY LAKE ROAD, 6th FLOOR
SUDBURY, ONTARIO
P3E 6B5

PELANGIO MINES INC.
535 BARTLEMAN STREET
TIMMINS, ONTARIO
P4N 4X2 CANADA

Tel: (888) 415-9845
Fax: (877) 670-1555

Submission Number: 2.24292
Transaction Number(s): W0280.01533

Dear Sir or Madam

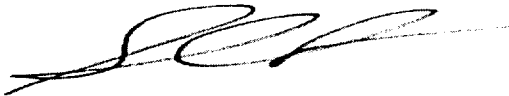
Subject: Approval of Assessment Work

We have approved your Assessment Work Submission with the above noted Transaction Number(s). The attached Work Report Summary indicates the results of the approval.

At the discretion of the Ministry, the assessment work performed on the mining lands noted in this work report may be subject to inspection and/or investigation at any time.

If you have any question regarding this correspondence, please contact STEVEN BENETEAU by email at steve.beneteau@ndm.gov.on.ca or by phone at (705) 670-5855.

Yours Sincerely,



Sheila Lessard
Acting Senior Manager, Mining Lands Section

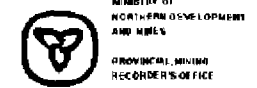
Cc: Resident Geologist

John Kevin Filo
(Agent)

Pelangio Mines Inc.
(Assessment Office)

Assessment File Library

Pelangio Mines Inc.
(Claim Holder)



MINING LAND TENURE MAP

Date / Time of Issue Oct 3 2002 16:45h Eastern

TOWNSHIP / AREA PLAN
TUDHOPE G-3724

ADMINISTRATIVE DISTRICTS / DIVISIONS
Mining Division Larder Lake
Land Titles/Registry Division Unavailable
Ministry of Natural Resources District Unavailable

TOPOGRAPHIC

- Watercourse
- Stream
- Concession Lot
- Private Road
- City/County Road
- Canal
- Canal - Applicable Expressions
- Shed
- Mine Headframe
- Factory
- Road
- Trail
- Historical Features
- Hydro Line
- Communication Line
- Proposed Area
- Municipal - Central District, Provincial Centre

LAND TENURE

Freehold Patent

- Surface And Mining Rights
- Surface Rights Only
- Mining Rights Only

Leasehold Patent

- Surface And Mining Rights
- Surface Rights Only
- Mining Rights Only

Classes of Occupancy

- Uses Not Specified
- Surface And Mining Rights
- Surface Rights Only
- Mining Rights Only

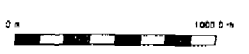
Land Use Forms

- Open in Cases
- Water Power Lease Agreement
- Mining Claim

LAND TENURE WITHDRAWALS

- Area Withdrawn From Disposition Mining Act Withdrawal Types
- Wm Surface And Mining Rights Withdrawal
- Wm Surface Rights Only Withdrawal
- Wm Mining Rights Only Withdrawal
- Order In Council Withdrawal Types
- Wm Surface And Mining Rights Withdrawal
- Wm Surface Rights Only Withdrawal
- Wm Mining Rights Only Withdrawal

IMPORTANT NOTICES

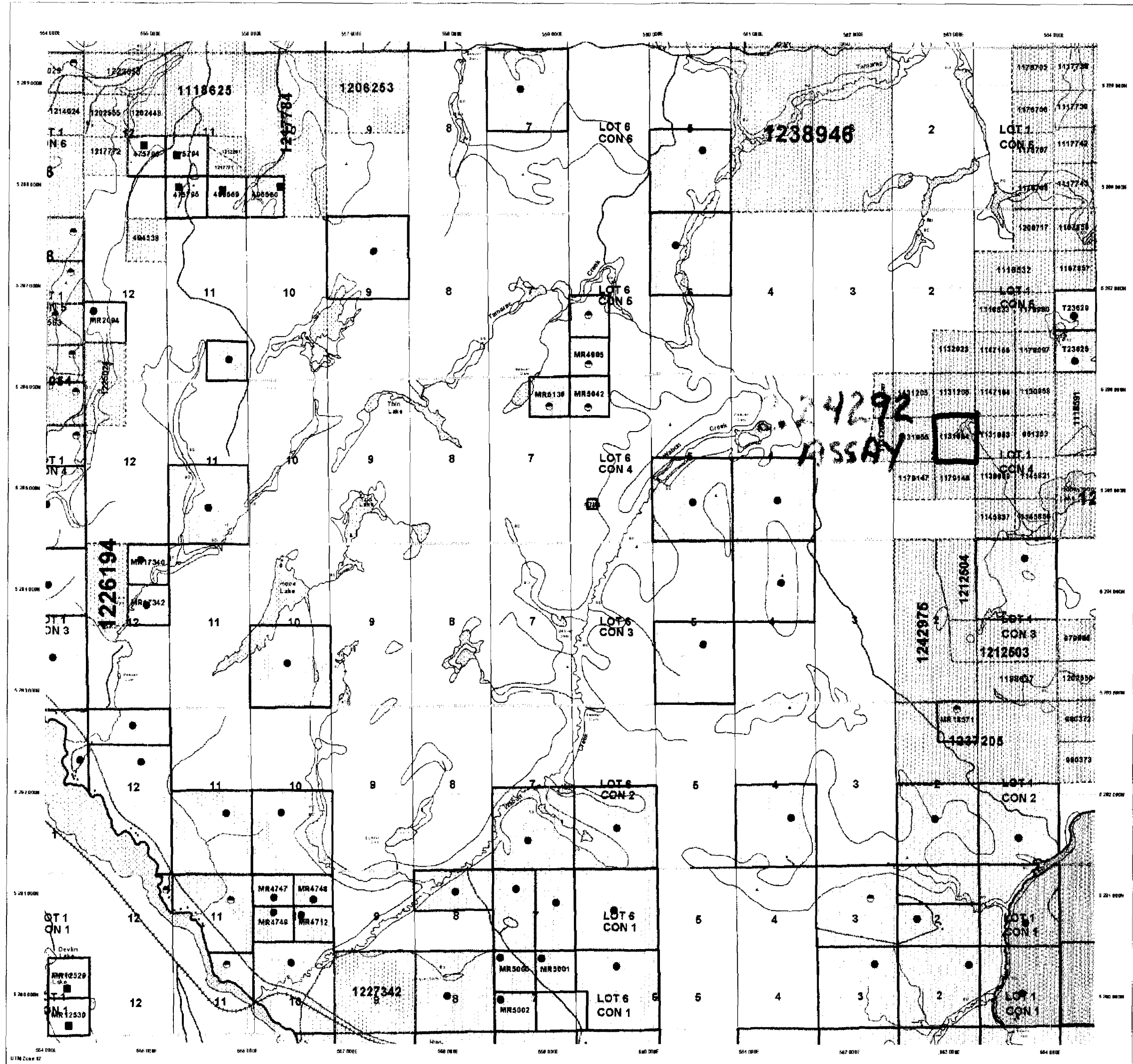


LAND TENURE WITHDRAWAL DESCRIPTIONS

Withdrawal No.	Type	Date	Description
1334	Wm	Jan 1 2001	ADDS 1 SURFACE RIGHTS RESERVATION ALONG THE SIDINGS OF ALL LINES & RAILS
1414	Wm	Aug 31 2001	Sec 30 W.L.L. 4:18:500 P.M.T. May 1200 W.A.S.
Confessio	Wm	Apr 8 2001	Byrce And Cane To enable Worked Locations Conservation Reserve
Confessio	Wm	Apr 8 2001	Byrce And Cane To enable Worked Locations Conservation Reserve

IMPORTANT NOTICES

Areas under withdrawal regulations, 1966 (MNR) or conditions under that affect mining prospecting, staking and mineral development activities.



These notices to stakeholders should consult with the Provincial Mining Recorders' Office of the Ministry of Natural Resources and Forestry for additional information on the status of the areas shown herein. This map is not intended for legal purposes and the information shown on this map is compiled from various sources. Computations and accuracies are not guaranteed. Additional information may be obtained from the Provincial Mining Recorders' Office of the Ministry of Natural Resources.

The information shown is derived from digital data available to the Provincial Mining Recorders' Office of the Ministry of Natural Resources and Forestry.

General Information and Limitations

Copyright Information:
Provincial Mining Recorders' Office 1st Floor
Water Tower/Mine Centre 7th Floor 1000 105 Street
Ottawa, Ontario K1P 6K6
Sudbury, ON P3E 8B5
Home Page: www.mnr.gov.on.ca/MNR/MINE/SLANDS/tenurepage.htm

Map Datum: NAD 83
Projection: UTM (Zone 18)
Topographic Data Source: Land Information Ontario
Mining Land Tenure Source: Provincial Mining Recorders' Office

This map may not show all existing land tenure and interests in land including certain surface, mining, easements, rights of way, floating rights, interests, or other forms of land tenure rights and interests from the Crown. Also, certain land tenure and interests that are not shown on this map may be in place.



