

Diamond Drilling



41P09NE8466 17 BRYCE

010

Township of BRYCE

Report No: 17

Work performed by: Rip Van Winkel Syndicate

Claim No	Hole No	Footage	Date	Note
T 25697	75-1	185.1'	Apr/75	(1)
	75-2	143.5'	Apr/75	(1)
T 24227	75-3	197.5'	Apr/75	(1)
	75-4	143'	Apr/75	(1)
	75-5	96.8'	May/75	(1)
T 24229	75-6	101.9'	May/75	(1)
T 24228	75-7	198.5'	June/75	(1)

1066.3

Notes:

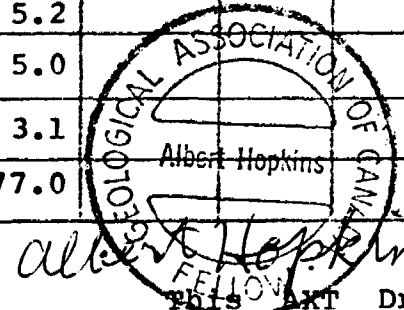
(1) FOR MORE INFORMATION SEE FILE #63.3350.

Coordinates of Collar: 509'S., 3446'W. COMPANY RIP van WINKEL SYNDICATE
 ref. Jack Willars' B.L. & Grid system.
 Dip - 35° Strike 335° PROPERTY "A" or Contact Zone.

began 1 April '75 Claim No. T.25697 D.D.H. # 75-1
 ended 9 Apr. '75.
 Bryce Tp., Ont. NTS. 41.P.9

Sample No.	Mr/Hr	Dist. from ft.	Formation	Width ft.	Assay Value	%	%	Au. Oz.	Cz.	Remarks
		0.0	Casing	5.5						Casing. Bedrock set-up.
		5.5	DACITE	48.6						Dacitic flows, fg., bleached pale green, rel. unalt., with occas. porphyritic flow sections, as at e.g.:- 6.0'-6.9', 9.8'-14.6', 18.9'-20.5', 21.7'-32.6', etc. the phenos. being up to 1/8" diam. Cut by few (rare) white Qtz-carbonate stringers ("strs.") @ 23.6' is a 1/3 glassy "bull qtz. str." ("b.q.str."). There are also occas. oblique rusty slips & leached Q. seams, e.g. @ 27.9', 29.4', 30.2', 31.1', & 33.3.
		48.6	ALTERED DACITE	9.7						Somewhat chloritized and bleached, with occas. sericite slips & rare specks or small cubes of py & more rare cp., & some hema stain. B. Q. Str.
		50.1'-50.2'								
		58.3	DACITE TUFF	5.4						or tuffaceous dacite, sl. ind rated & laminated & granular
		63.7	ALT. SHEAR ZONE	1.3						Mineralized ("min'ld") with minor py seams.
		65.0	DACITE & Q SEAMS	3.8						Dacite cut by dozens of Q seams, the dacite containing occas. py cubes thru'out.
75-1-1		63.7'-68.8'		5.1				Tr.		This does not look like ore or the main "A" or contact zone that we are seeking, but we should have cut it by now.
		68.8	DACITE	26.0						Typical pale-grey-green unalt. (relatively), cut by frequent barren-looking Q-carb seams, every few inches. If sample 75-1-1 assays well, then I should return and sample all these Q-carb. seam sec'ns. There are also occas. mud seams, which core well. To date the core recovery seems to be at least 95%+.
		94.8	Main "A" zone ? or Contact Zone	13.3						Beginning of the main alteration sought. Contains mud seams & sparse py cubes min'ln, & rare seams of Q with very rare specks of cp.
75-1-2		94.8'-100.0'		5.2				Tr.		The last 4" looks the best.
75-1-3		100.0'-105.0'		5.0				Tr.		Continuation of alteration & py sparse min'ln.
75-1-4		105.0'-108.1'		3.1				0.01		Silic'd sericitized sec'n, about 1% Py.
		108.1	GREENSTONE	77.0						Andesite or basalt ?, darker green, cut by many Q-carb seams, & occas. narrow seam of dissem. py. Basalt is amygdaloidal in places, with silic. material. Some epidote & chlorite, e.g. a seam at 134.9'. No return water or sludge in this hole.

185.1 END OF HOLE.



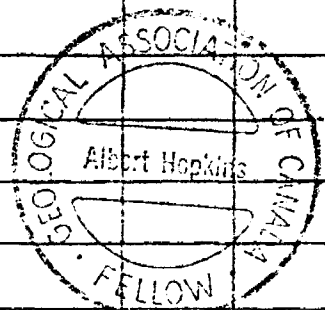
Albert Hopkins
 This Drift core stored behind office, & was logged by A. Hopkins.

Andesite or basalt ?, darker green, cut by many Q-carb seams, & occas. narrow seam of dissem. py. Basalt is amygdaloidal in places, with silic. material. Some epidote & chlorite, e.g. a seam at 134.9'. No return water or sludge in this hole. This Drift core stored behind office, & was logged by A. Hopkins.

3526'

Coordinates of Collar: 493'S., 3526'W. COMPANY RIP van WINKEL SYNDICATE began 10.IV.75 Claim No.T.25697 D.D.H. # 75-2
 ref. Jack Willars' BL. & Grid System. ended 15.IV.75
 Dip-35° Strike 335° PROPERTY "A" or Contact Zone Bryce Tp., NE. Ont. NTS.41.P.9

Sample No.	Mry/Hr	Dist. from ft	Formation	Width ft.	Assay Value	%	%	Au. Oz.	Ag. Oz.	Remarks
		0.0	CASING	16.8						Hole difficult to collar due to flat angle & sloping ledge, & boulders & float in the overburden ("ob.").
		16.8	DACITE, sl. phytic	31.2						Lite grey-green fg., sl. phytic in places, eg. 16.8'-19.5', 30.0'-35.0', 40.2'-42.0'. Some hema in slip seams from 22.0'-24.9', at 28.4', 29.1', etc. The core is cut by frequent barren-looking Q-carb seams at erratic intervals, obliquely.
		48.0	DACITE, non-phytic	44.8						Darker green than the above, fg., non-porphyritic.
75-2-1		58.6'-60.1'		1.5				Tr.		Dacite, rel. unalt, cut by many seams of Q-carb, normal to core, aver. every inch or so, with minor Py. seams & cubes 1/8" diam.
75-2-2		66.9'-70.6'		3.7				Tr.	Nil	Ditto, + 1 pegmatitic Q vein (oblique) from 67.0'-69.0' & QV. from 70.0'-70.6' with less than 1% py; some hema, & minor Cp, & a pink stain.
		92.8	CONTACT ZONE	30.0						More alt. & more Q, Py, & seric. than the above.
75.2.3		92.8'-102.8'		10.0				0.03		Contains almost 2% Py, & much seric., lite grey colour.
75.2.4		102.8'-112.8'		10.0				0.01		Ditto
75.2.5		112.8'-122.8'		10.0				Tr.		Ditto, but with less alteration.
		122.8	DACITE	20.7						Much less alteration than above, & darker green, as above
		143.5	END OF HOLE.							Note:- The main ictn of the "T" Trench is 75' horiz. ahead of this drill collar & about 20' below it. This AXT drill core is stored under large jackpine tree just NE. of the camp office, & was logged by the undersigned geologist. These widths & assays were very

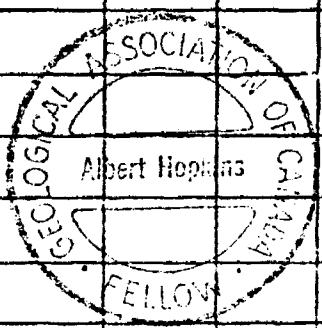


disappointing with no ore at all. The widths & values reported by Jack Bailey & Austin must have been caused by surface enrichment by Au accumulating in surface ripples. Therefore I have decided to abandon this "A" or Contact Zone, & to use the remaining footage of this 1000' drill contract in attempting to extend the "B" or Briscoe goldmine Zone.

Albert Hopkins, B.A.Sc., Toronto.
Albert Hopkins

Coordinates of Collar: 510'E., 32'S. COMPANY Rip van Winkel Syndicate began 21 Apr.'75 Claim No. T.24227 D.D.H. # 75-3
 ref. "B Zone" shafts P.L. of Hopkins. Finished on
 Dip -45° Strike 335° PROPERTY Briscoe Bryce Goldmine "B Zone" 24.IV.75 Bryce Twp., Ont. NTS. 41.P.9

Sample No.	Mr/Hr	Dist. from ft	Formation	Width ft.	Assay Value	%	%	Au. Oz.	Oz.	Remarks
		0.0	Casing	28.9						All is varved glacial clay, except for a few boulders close to ledge.
		28.9	DACITE ?	11.6						Dacitic, light grey-green acid-intermed. lava flows, fairly fresh-looking, fine-grained ("fg."), cutting the drill core @ angles of from 15° to 45°; & intersected by many barren-looking glassy Q str. up to 1/2" wide, @ intervals of from 1" to 1'; chloritised more or less.
		40.5	Altered DIORITE	11.5						Coarser-grained flow or intrusion, probably an old alt'd DIORITE, & cut by fewer Q str. than the above dacite.
		52.0	AGGLOMERATE ?	30.1						AGGLOMERATE, VOLCANIC BRECCIA & PORPHYRITIC FLOWS, possibly the main "B or Briscoe Zone", but does not appear auriferous to this geologist. It contains occas. sparse py in small seams & clusters, & rare specks Cp.
75-3-1		76.2'-78.9'		2.7			Tr.			This is the best-looking section of the above agglom. If it by chance assays ore, then return & sample all.
		82.1	DACITE	16.2						Similar to the above Dacite.
		98.3	Altered DIORITE	7.2						More altered, coarser-grained Diorite than the above, partially decomposed, chloritised, & fewer Q str.
		102.3'-103.5'		1.2						No core, mud seam or open seam. Underground water course, water suddenly spurted out the drill hole.
		103.5	Fresher DIORITE	22.2						Slightly fresher, more massive, but still slightly altered & becoming finer-grained; also less py & Q str.
		125.7	DACITE FLOWS	30.6						Dacite as above, fg., & more Q str.
		166.3	AGGLOM. & PORPH. FLOWS	31.2						Gets more basic & coarser-grained with depth, & more massive. We are now probably well past the "B" Break".
		172.1'-173.0'		0.9						No core, an accumulated space of ground up-core.
		196.2'-197.5'		1.3						No core, again probably this space in the core box merely represents an accumulation of ground-up core.
		197.5	END OF HOLE.							Note:
										This hole was drilled E. of the creek & mill, 510' E. of the No. 1, Vert. or E. shaft & 850' E. of the No. 2 inclined or W. shaft to cut the expected E. extension of the "B" or Briscoe goldmine zone. It appears not to have cut this zone, so probably the Zone does not extend this far E., or it has been faulted or folded or trended S. of here. This AXT drill core is stored on the prop. near the office.



This core was logged and sampled by *Albert Hopkins*
 Albert Hopkins, B.A.Sc.

Note:
 This hole was drilled E. of the creek & mill, 510' E. of the No. 1, Vert. or E. shaft & 850' E. of the No. 2 inclined or W. shaft to cut the expected E. extension of the "B" or Briscoe goldmine zone. It appears not to have cut this zone, so probably the Zone does not extend this far E., or it has been faulted or folded or trended S. of here. This AXT drill core is stored on the prop. near the office.

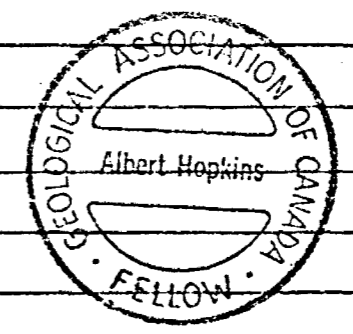
Coordinates of Collar: 505'E., 25'N. COMPANY Rip van Winkel Syndicate began 26 Apr. '75. Claim No. T.24227 D.D.H. # 75-4
 ref. "B" Zone shafts P.L. of Hopkins. ended 14 May 1975.
 Dip -45° Strike 155° PROPERTY Briscoe Bryce Goldmine "B" Zone. Bryce Twp., Ont. NTS. 41.P.9

Sample No.	Mr/Hr	Dist. from ft	Formation	Width ft.	Assay Value	%	%	Au. Oz.	Oz.	Remarks
		0.0	Casing	27.2						Clay overburden, no core.
		27.2	Dacite	17.0						Same rock formation as in the start of Hole # 75-3, i.e. a dacitic, lite grey-green acid-intermed. lava flows, fairly fresh-looking, fg., cutting the drill core @ angles of from 15° to 45°; & intersected by many barren-looking Q. str. up ¼' wide, @ intervals of from 1" to 1'; chloritized in places.
		44.2	Brecciated dacite	26.0						Same as above, but slightly brecciated and amygdaloidal, with occas. blebs of primary Py.
		70.2	Altered zone	9.8						Altered, (sericitized, chloritized) fractured zone, with an open water-flowing seam at 71.5' (where driller lost his rt. index finger) - no sludge return, but sludge or muddy water now comes out the orig. water-hole well by the 75-3 set-up, & a heavy water flow comes out the collar pipe of Hole 75-3. Many small fragments of vuggy Q caved into hole, & tends to grind up the core and jam in the core tube. It is distributed thru the core, & thus core is hard to log correctly There is some epidote, & some of the lava is sl. dioritic.
75.4.1		70.2'- 75.1'		4.9				Tr.		
75.4.2		75.1'- 80.0		4.9				N11		
		80.0	Andesite	17.9						More basic than the above lava, this intermed. lava is probably a dacitic andes. It is coarser-grained than dacite, but likewise still has many barren-looking Q. str. More highly altered (chlor & ser.) intermed. lava, little Q. More open seams, caving, with rust, Q. str., 1% py & rare cp. Possibly some py has been leached out. Loose pieces of caved Q fall in hole & grind up some core in the core tube.
		97.9	Altered andesite	15.2						
75.4.3		100.0'-103.0'		3.0				Tr.		
		113.1	Altered Diorite	9.9						More basic, darker, coarser-grained, more chloritic, soft, decomposed rock. No Q Strs. 50% ground up or open seams. This soft dark intrusive is apparently the footwall marker of the "B" zone quartz ore zone, except for the 3' of dacite below.
		123.0	Altered Dacite	2.0						Sl. brecciated as at 44.2', sl. amygdaloidal, with occas. blebs of primary Py.
75.4.4		126.0'-128.5'		2.5				0.51		"B" or Briscoe goldmine Zone, looks like ore. 50% vugs, open seams, ground up & lost core, or leached out sulfids; 25% rusty, vuggy QV. containing much Py, vfg. V.G. (visible gold), & 5 specks or small Xls (isometric, cubic) of native Cu, red, or maybe red gold (Au rich in Cu), like at Horne mine, Noranda

(continued on page 2).

Coordinates of Collar: COMPANY Rip van Winkel Syndicate Claim No. T.24227 D.D.H. # 75-4
 Dip Strike PROPERTY Briscoe Bryce Goldmine, "B" Zone.

Sample No.	Mr/Hr	Dist. from ft	Formation	Width ft.	Assay Value	%	%	Oz.	Oz.	Remarks
			"B" Vein cont'd							25% alt'd dacite & caved-in material. This sample is more qualitative than quantitative, probably, due to the vugs, open seams, ground-up core & caved-in material. In my opinion, if mined underground, the vein would be richer than this assay.
		128.5	Alt. dior. or dacite.	14.5						This is either a fg. alt'd dior. or a vcg. alt'd dacite, much the same as the altered lava @ 70.2'. It has the occas. seam of rusty or red haematite.
		143.0	End of hole.							
										Note:-
										This is the first hole in this whole 1975 program to intersect ore. It was missed in Hole 75-3 due to the suspected N-S fault in the creek valley, which apparently has a rt.-hand horizontal displacement of about 60'. Now that we have found the ore vein, we should be able to follow it easterly in this completely overburdened area.
										This "XT" core is being drilled by Mortimer Diamond Drillers of Gravenhurst, Ont., & the assaying is being done by the Bell-White Anal. Labs. of Haileybury, Ont. The core was logged & sampled by A. Hopkins, B.A.Sc., etc., geologist, & the core is stored under 2 large pine trees just NE. of the office-core house.
										<i>Albert Hopkins</i>



700'E. &

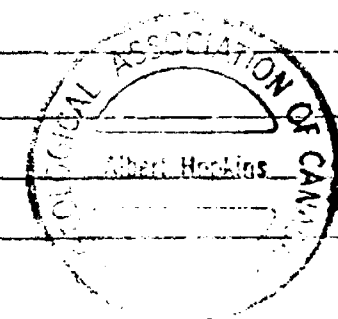
Coordinates of Collar: 134'S.rd. & P.L. COMPANY RIP VAN WINKEL SYNDICATE began 15 May '75 Claim No. T.24227 D.D.H. # 75-5
 ref. Hopkins' corrected P.L. along road. ended 20 May '75.
 Dip -48° Strike 335° PROPERTY Briscoe Bryce Goldmine "B" Zone Bryce Twp., Ont. NTS. 41.P.9

Sample No.	Mr/Er	Dist. from ft	Formation	Width ft.	Assay Value	%	%	Au. Oz.	Oz.	Remarks
		0.0	Overburden	64.5						Casing. The first 60' is sand, clay, & small pebbles. The last 5" or so was large pebbles and boulders, very difficult
		64.5	Altered Dacite	3.0						Intermed. to acid lava flows, fg., bleached pale green, some chloritization & sericitization, & rare specks of fg. py.
75.5.1		67.5	"B" or Briscoe zone.	2.5				0.15		Poor core recovery of main vein, 50% vug or open leached Qtz. vein or ground-up core or sulfs., 25% Q, 25% alt. dacite. Consid. py in seams & clusters, a few specks of cp., 4 crystals fg. native Cu seen, & 1 speck of V.G.? (vfg.)
		70.0	Altered Dacite	5.0						As above.
		75.0	Altered Diorite	14.3						More basic, darker, coarser-grained, & more chloritic & talcose than the alt. dacite. It has no Q. str. at all, is very soft, & much ground-up and unconsolidated.
		89.3	Agglomerate	6.9						Alt. agglomerated lava, volcanic breccia & porphyritic flows, cut by many minor & miniscule Q str. & slips (barren-looking)
		96.2	DACITE	0.6						Fresh, f.g., typical, grey colour.
		96.8	END OF HOLE.							

NOTE:-

It now appears that we have located the location and strike of the "B" or "Briscoe goldmine" E. extension in Holes Nos. 75-4 and 75-5, under overburden getting deeper going E. Therefore I am spotting DDH.#75-6 to allow for the newly assumed strike of 71.5°, the steep dip to the S., and the deeper overburden, 200' E. of this hole, #75-5. As noted in the log of Hole #75-4, these assays of poorly recovered Q. veins & leached sulfs. are more qualitative than quantitative, due to the leaching out of the sulfs, their friability, the open seams, and to the falling into the drill hole of small pieces of Q. & lava that end up in the coretube and tend to grind up the core in the tube. The net result is a lot of open spaces in the corebox over a given footage. Probably in actual underground mining, the ore grade would be much better than that obtained in drill core. The core from this hole is stored N. of the mine office. The core was logged by Albert Hopkins, B.A.Sc.

a. Hopkins



Coordinates of Collar: 125'S.of rd.PL. COMPANY RIP van WINKEL SYNDICATE

began 22 May '75 Claim No.T.24229 D.D.H. # 75-6

900'E.

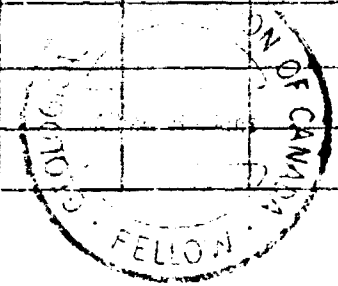
ended 28 May '75

Dip -52° Strike 335°

PROPERTY Briscoe Bryce "Goldmine B Zone"

Bryce Twp., Ont. NTS. 41.P.9

Sample No.	Mr/ Hr	Dist. from ft	Formation	Width ft.	Assay Value	%	%	Oz.	Oz.	Remarks
		0.0	Overburden ("ob.")	81.9						The ob. here proved to be deeper & worse than in the last hole, was expensive piping, & eventually forced us to abandon the hole before reaching our target. First Mortimer, the drill contractor drove "A" casing as far as he could, about 60', & then he drove "E" casing inside it as far as he could wash, drive, & drill with a casing shoe. This was 81.9', where it still had not reached bedrock. From here he drilled on with E rods as far as he could go in the bedrock, but had to quit at 101.9 as he had no casing to bedrock, and was afraid of losing the hole, bits, rods, & casing in the boulders.
		81.9	DACITE PORPHYRY	20.0						Bleached light-grey, mg., porphyritic acid dacite cut by a very few Q-carb str. The white fels. phenos. are about 1/8" diam. This same type of wall-rock was cut by Jack Willars drilling in his hole # 67-6 under the inclined shaft from 19'-194', before cutting ore from 188'-193' at the agglomerate contact. Therefore the "Briscoe B ore break" must be N. of the end of hole a very short distance.
Spec. "C"		@ 91.0'								Light-coloured, granular, no Q. str. For microscopic exam'n.
		101.9	End of hole (reluctantly).							
NOTE:-										
<p>The losing of this hole was very disappointing, as it would have probably got better core recovery & have proven the E. ext'n of the Briscoe goldmine or B vein a further 200' if it could have been continued. Also, an option payment of \$3000 is due to Ed. Briscoe before the end of June 1975, or the whole property option will lapse, so time is of the essence. To date we have drilled 867.8', leaving only 132.2' in our contract and our budget. Therefore, as the ob. is getting deeper & worse for boulders going E., hole # 75-7 will be spotted at the W. end of the Briscoe zone and shaft, 100' W. of a drill setup we found,, where Briscoe now tells us that he drilled without an engineer and cut sulfs and a Q. vein in a 144' hole. If this drill contract of ours is extended, then another try should be made to cut the vein N. of hole 75-6, say the collar 25' N. of 75-6 with a 60° dip.</p>										
										This core was logged by A. Hopkins. B.A.Sc.
										<i>A. Hopkins.</i>



Coordinates of Collar: 490' SW. of shaft, COMPANY RIP van WINKEL SYNDICATE began 1 Jun '75 Claim No. T.24228 D.D.H. # 75-7
 125" SE. of shaft P.L. ended 9 Jun '75.
 Dip 40° Strike 330° PROPERTY "Briscoe Bryce Goldmine" or "B" Zone. Bryce Twp., Ont. NTS. 41.P.9

Sample No.	Mr/Er	Dist. from ft	Formation	Width ft.	Assay Value	%	%	Au. Oz.	Oz.	Remarks
		0.0	Casing	5.0						This set-up was on high ground with very shallow ob., 100' SW. of a recent set-up by Ed. Briscoe (his tripod is still standing interned. lava, med.-green colour, mg., cut by Q-carb Strs.
		5.0	Andesite breccia	6.5						
		11.5	Alt. Dacite ph'y	186.0						Altered dacite porphyry & breccia, with inclusions of andesite. The dacite is light grey-green in colour, with alternating dacite & dacite-phy., e.g. the latter from 59.9'-63.1'.
			81.5'-82.2'	0.7						Pink bull quartz vein ("BQV") cutting the core obliquely @ about 15°.
			@ 121.1'	0.1						Ditto, but cutting @ 30° angle.
			@ 147.5'	0.8						9" of core is breccia & Q only, barren-looking, cutting the core @ about 30°.
			@ 159.0'	0.1						1' of Q & epidote with minor py (possibly auriferous).
										The dacite phy is cut by a few rusty hema seams, e.g. @ 154', 165', & 167.5'.
75-7-1		132.2'	End of 1000' contract.)							
			182.0'-183.0'	1.0						50% Q with some hema & sparse py, cutting core @ 45°.
			187.5'-188.0'	0.5						Darker, more altered & more schistose fg. lava.
		197.5	Andes. schist	1.0						Dark green, more basic lava.
		198.5	End of hole (reluctantly, gone over contract & budget.)							

NOTE:- With the permission of the rest of the Syndicate, I reluctantly terminated the drilling at this point, because:-
 (a) We had exceeded our min. 1000' contract by 66.3'. (I expected to hit the main vein in that last 66.3').
 (b) We had exceeded our orig. \$12,000 drilling budget by \$94.73, which I paid personally.
 (c) We seemed to be frustrated at every turn in intersecting ore, so the whole deposit seems to be merely a "teaser".
 (d) The drill contractor had lost his right index finger in the drill gears, and wished to conclude the contract, mainly due to a long wet spell, which made the clay access road impassible.
 The core for this hole is stored under a large tree about 30' E. of the collar of the hole. The core was logged by A. Hopkins, B.A.Sc.

a. Hopkins.



BELL-WHITE ANALYTICAL LABORATORIES LTD.

P.O. BOX 187.

HAILEYBURY, ONTARIO

TEL: 672-3107

Certificate of Analysis

NO. 6841

DATE: April 4, 1975.

SAMPLE(S) OF: Core(3)

RECEIVED: April 3 /75.

SAMPLE(S) FROM: A. Hopkins, Esq., Hopkins Mining Consultants Ltd., Toronto.
A

	<u>Sample No.</u>	<u>Oz. Gold</u>
75-1-1	2901	Trace
75-1-2	2902	Trace
75-1-3	No tag	Trace

IN ACCORDANCE WITH LONG-ESTABLISHED NORTH AMERICAN CUSTOM, UNLESS IT IS SPECIFICALLY STATED OTHERWISE GOLD AND SILVER VALUES REPORTED ON THESE SHEETS HAVE NOT BEEN ADJUSTED TO COMPENSATE FOR LOSSES AND GAINS INHERENT IN THE FIRE ASSAY PROCESS.

BELL-WHITE ANALYTICAL LABORATORIES LTD.

PER



BELL - WHITE ANALYTICAL LABORATORIES LTD.

P.O. BOX 187,

HAILEYBURY, ONTARIO

TEL: 672-3107

Certificate of Analysis

NO. 7271

DATE: April 8, 1975.

SAMPLE(S) OF: Core(1)

RECEIVED: April 8/75.

SAMPLE(S) FROM: Albert Hopkins, Esq., Hopkins Mining Consultants Ltd., Toronto.

<u>Sample No.</u>	<u>Oz. Gold</u>
75-1-4	0.01

IN ACCORDANCE WITH LONG-ESTABLISHED NORTH AMERICAN CUSTOM, UNLESS IT IS SPECIFICALLY STATED OTHERWISE GOLD AND SILVER VALUES REPORTED ON THESE SHEETS HAVE NOT BEEN ADJUSTED TO COMPENSATE FOR LOSSES AND GAINS INHERENT IN THE FIRE ASSAY PROCESS.

BELL-WHITE ANALYTICAL LABORATORIES LTD.

PER



BELL - WHITE ANALYTICAL LABORATORIES LTD.

P.O. BOX 187.

HAILEYBURY, ONTARIO

TEL: 672-3107

Certificate of Analysis

NO. 8113

DATE: April 16, 1975.

SAMPLE(S) OF: Core(5)

RECEIVED:

SAMPLE(S) FROM: A. Hopkins, Esq., Hopkins Mining Consultants Ltd., Toronto, Ont

<u>Sample No.</u>	<u>Oz. Gold</u>	<u>Oz. Silver</u>
75-2-1	Trace	
2	Trace	Nil
3	0.03	
4	0.01	
5	Trace	

IN ACCORDANCE WITH LONG-ESTABLISHED NORTH AMERICAN CUSTOM, UNLESS IT IS SPECIFICALLY STATED OTHERWISE GOLD AND SILVER VALUES REPORTED ON THESE SHEETS HAVE NOT BEEN ADJUSTED TO COMPENSATE FOR LOSSES AND GAINS INHERENT IN THE FIRE ASSAY PROCESS.

BELL-WHITE ANALYTICAL LABORATORIES LTD.

PER. 



BELL - WHITE ANALYTICAL LABORATORIES LTD.

P.O. BOX 187.

HAILEYBURY, ONTARIO

TEL: 672-3107

Certificate of Analysis

NO. 8883

DATE: April 28, 1975.

SAMPLE(S) OF: Core(1) Rock(1)

RECEIVED: April 25/75.

SAMPLE(S) FROM: A. Hopkins, Esq., 810 Duplex Ave., Toronto 12, Ont.

Sample No.

Oz. Gold

75-3-1

Trace

Porphyry float from RvW.'s
new staked claim L.402755,
near near Wescott-Towne-Sewell
auriferous porphyry dyke, Bryce twp.

2911

Trace

IN ACCORDANCE WITH LONG-ESTABLISHED NORTH
AMERICAN CUSTOM. UNLESS IT IS SPECIFICALLY STATED
OTHERWISE GOLD AND SILVER VALUES REPORTED ON
THESE SHEETS HAVE NOT BEEN ADJUSTED TO COMPEN-
SATE FOR LOSSES AND GAINS INHERENT IN THE FIRE
ASSAY PROCESS.

BELL-WHITE ANALYTICAL LABORATORIES LTD.

PER



BELL - WHITE ANALYTICAL LABORATORIES LTD.

P.O. BOX 187.

HAILEYBURY, ONTARIO

TEL: 672-3107

Certificate of Analysis

NO. 10227

DATE: May 14, 1975.

SAMPLE(S) OF: Core(3)

RECEIVED: May 14/75.

SAMPLE(S) FROM: A. Hopkins, Esq., Hopkins Mining Consultants Ltd., Toronto.

<u>Sample No.</u>	<u>Oz. Gold</u>
75-4-1	Trace
75-4-2	Nil
75-4-3	Trace

IN ACCORDANCE WITH LONG-ESTABLISHED NORTH AMERICAN CUSTOM, UNLESS IT IS SPECIFICALLY STATED OTHERWISE GOLD AND SILVER VALUES REPORTED ON THESE SHEETS HAVE NOT BEEN ADJUSTED TO COMPENSATE FOR LOSSES AND GAINS INHERENT IN THE FIRE ASSAY PROCESS.

BELL-WHITE ANALYTICAL LABORATORIES LTD.

PER 



BELL - WHITE ANALYTICAL LABORATORIES LTD.

P.O. BOX 187,

HAILEYBURY, ONTARIO

TEL: 672-3107

Certificate of Analysis

NO. 10547

DATE: May 21, 1975.

SAMPLE(S) OF: Core(2)

RECEIVED: May 20/75.

SAMPLE(S) FROM: A. Hopkins, Esq., Hopkins Mining Consultants, Toronto, Ont.

<u>Sample No.</u>	<u>Oz. Gold</u>
75-4-4	0.51
75-5-1	0.15

IN ACCORDANCE WITH LONG-ESTABLISHED NORTH AMERICAN CUSTOM, UNLESS IT IS SPECIFICALLY STATED OTHERWISE GOLD AND SILVER VALUES REPORTED ON THESE SHEETS HAVE NOT BEEN ADJUSTED TO COMPENSATE FOR LOSSES AND GAINS INHERENT IN THE FIRE ASSAY PROCESS.

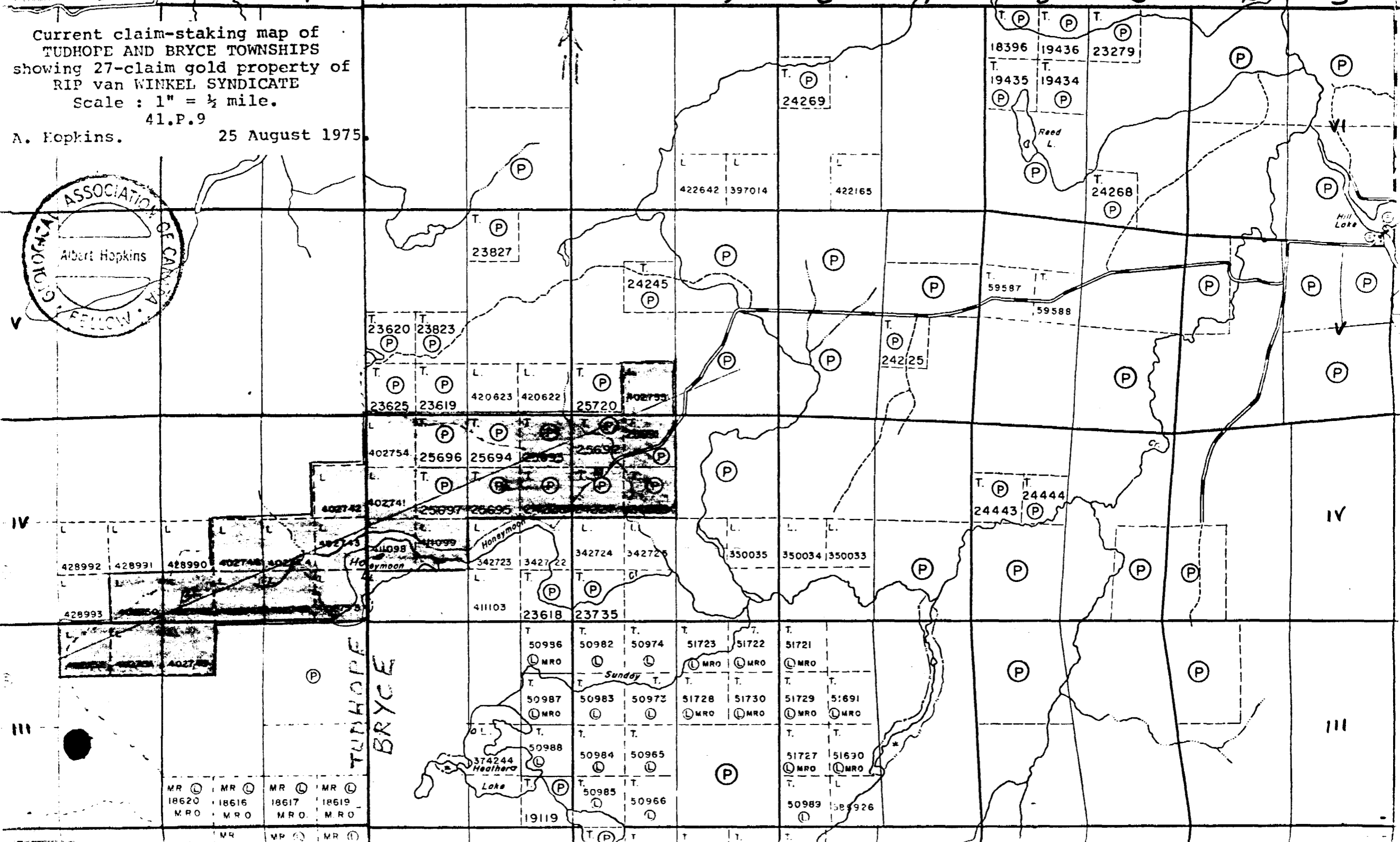
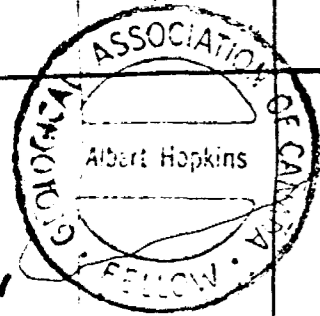
BELL-WHITE ANALYTICAL LABORATORIES LTD.

PER

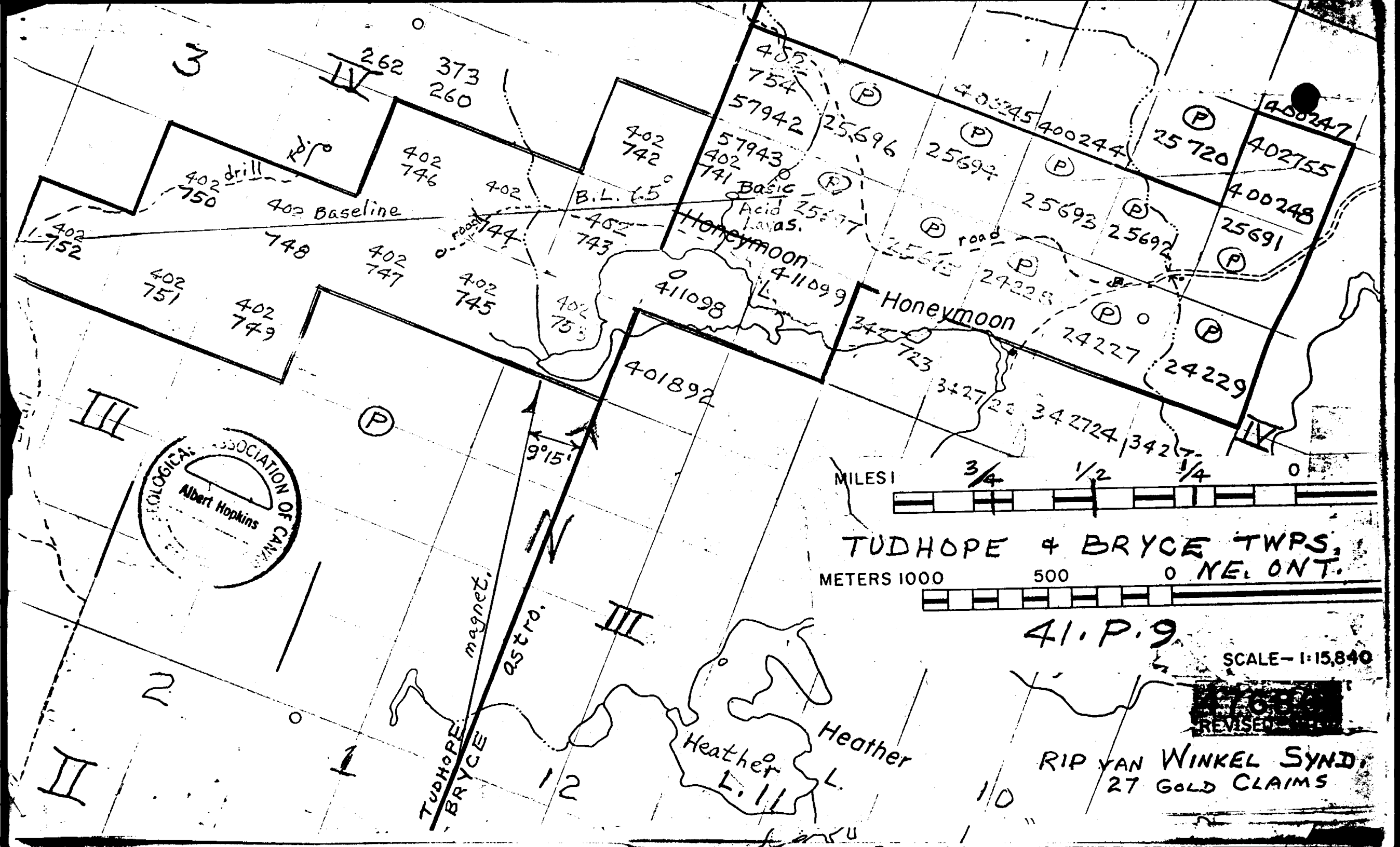
Current claim-staking map of
 TUDHOPE AND BRYCE TOWNSHIPS
 showing 27-claim gold property of
 RIP van WINKEL SYNDICATE

Scale : 1" = 1/2 mile.
 41.P.9

A. Hopkins. 25 August 1975.



MR	MR	MR	MR
18620	18616	18617	18619
MRO	MRO	MRO	MRO



GEOLOGICAL ASSOCIATION OF CANADA
 Albert Hopkins

MILES 3/4 1/2 1/4 0
 TUDHOPE & BRYCE TWPS, N.E. ONT.
 METERS 1000 500 0

41.P.9

SCALE - 1:15,840

REVISED

RIP VAN WINKEL SYND.
 27 GOLD CLAIMS

TUDHOPE-BRYCE magnet. astro.

Heather L.
 Heather L.

I
 II
 III
 IV

12

10

9°15'

B.L. 65°

Acid lavas.
 Basic lavas.

Honeymoon L.

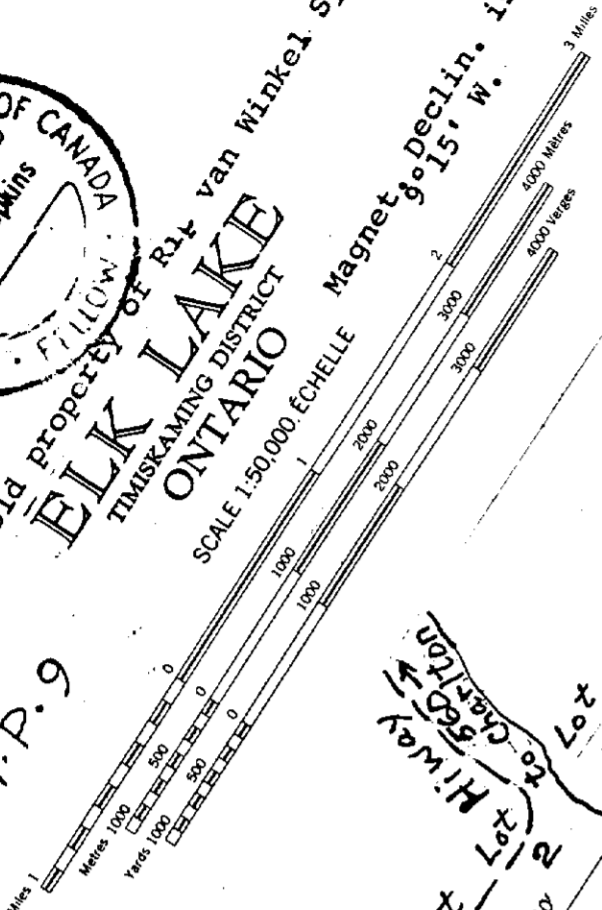
Honeymoon L.

402 drill
 402 Baseline

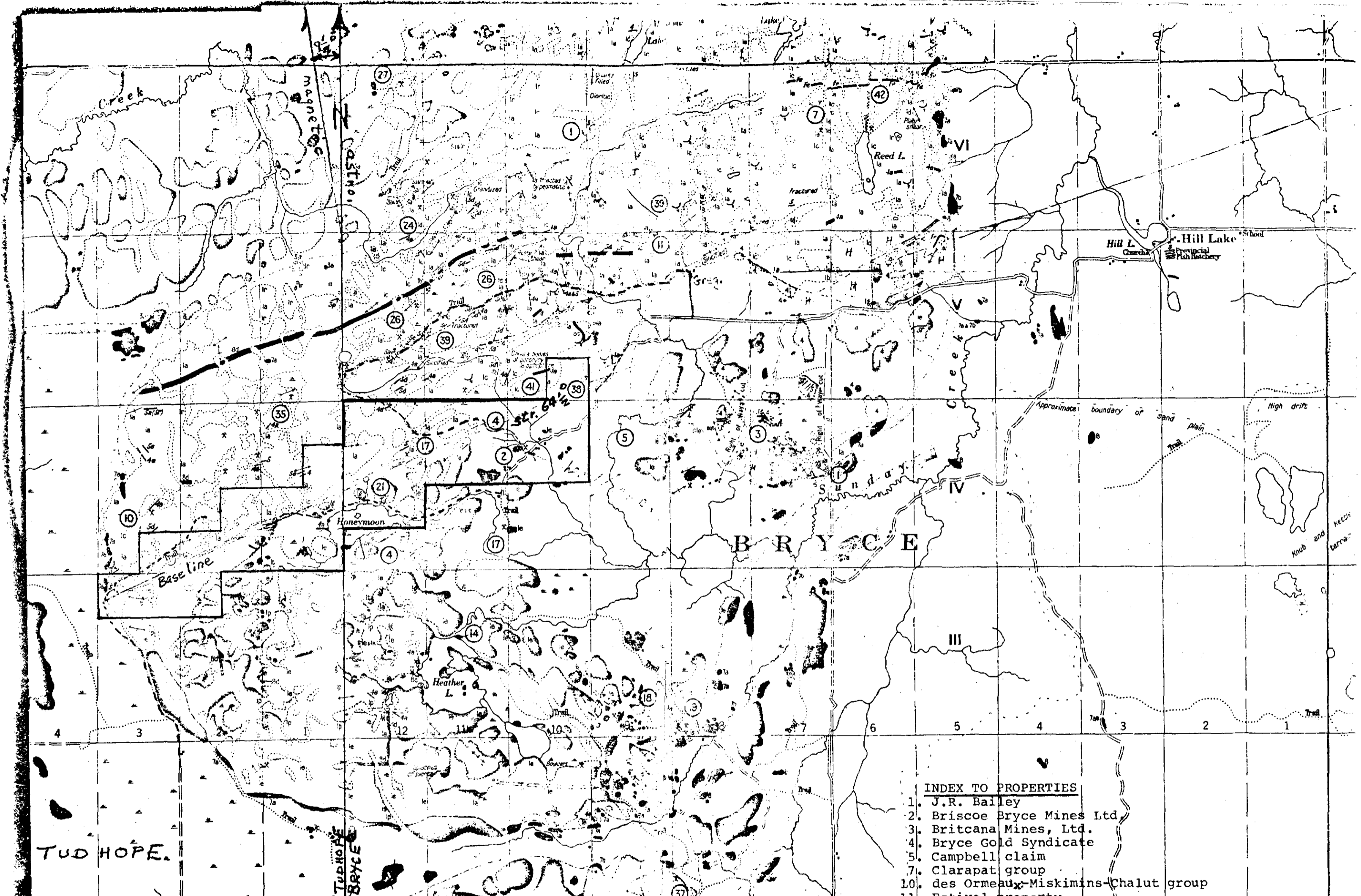
road



showing the 27-claim gold property of R.V. van Winkel Syndicate
41-P.9
ELK LAKE
TIMISKAMING DISTRICT
ONTARIO
SCALE 1:50,000 ÉCHELLE Magnet 30° declin. is 15' W.



200



TUD HOPE.

TUD HOPE
BRYCE

O.D.M.
41.P.9 Map No. 50j Magnet. Declin. 9° 15' W.

BRYCE-ROBILLARD AREA

DISTRICT OF TIMISKAMING, ONTARIO

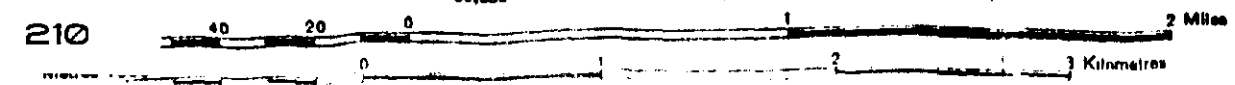
showing the 27-claim Gold Property of Rip van Winkel Syndicate
 as reported by W. W. MOORHOUSE in Vol. L, Part 4, Ontario Department of Mines Annual Report, 1941

INDEX TO PROPERTIES

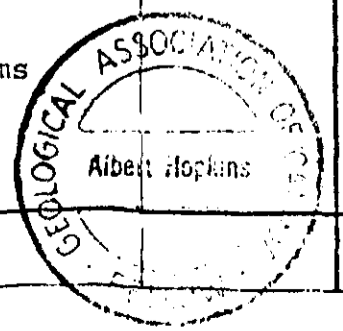
1. J.R. Bailey
2. Briscoe Bryce Mines Ltd.
3. Britcana Mines, Ltd.
4. Bryce Gold Syndicate
5. Campbell claim
7. Clarapat group
10. des Ormeaux-Miskimins-Chalut group
11. Estival property
14. Heather Lake Mines Ltd.
17. Krone Mining Syndicate Ltd.
21. McDougall property
24. Mearow-McCombe property
26. Palmer-Vaughan property
35. Taylor property
38. Towne-Currie property
39. Towne-Woollings-Mulholland claims
41. Westcott property
42. Whitton property.



Scale $\frac{1}{31,680}$ or 1 Inch to $\frac{1}{2}$ Mile

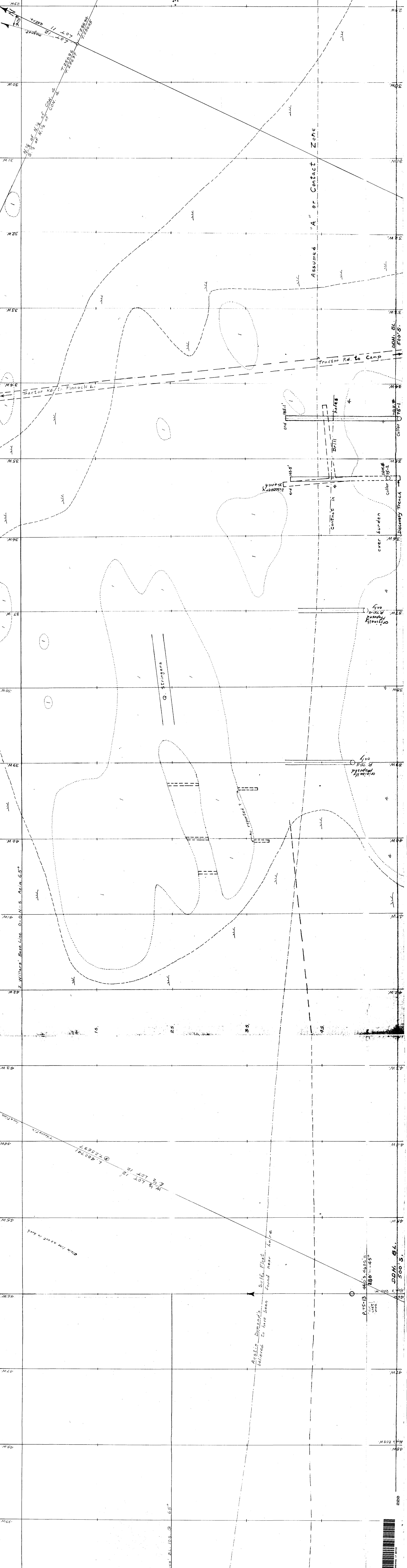
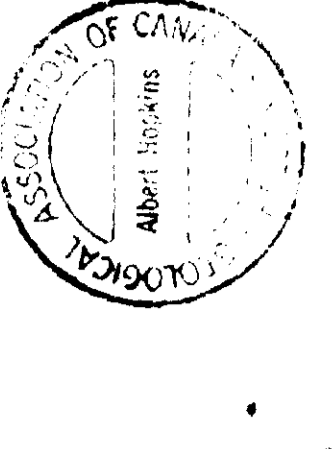


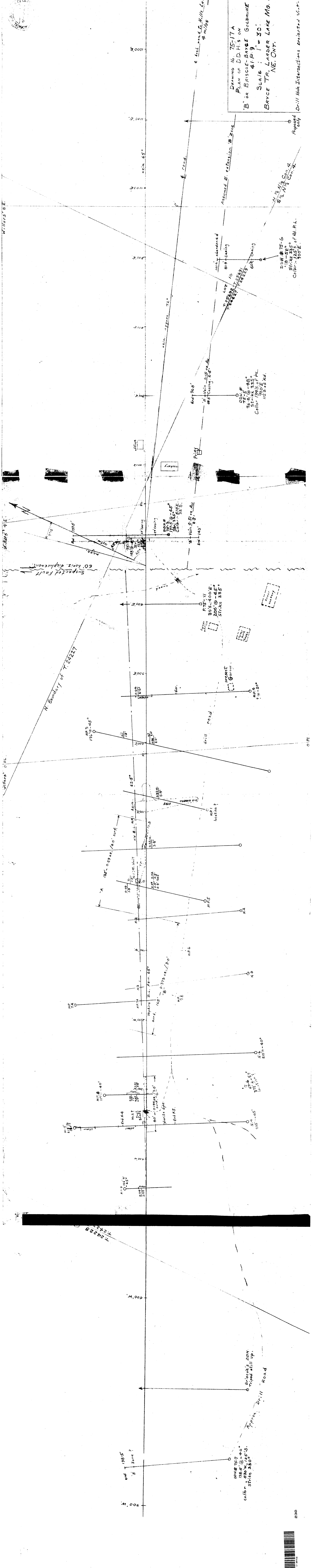
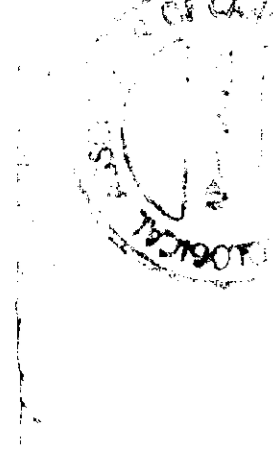
C A N E



41-P.9 DRAWING No. 75-16
 PLAN OF DIAMOND DRILLING
 "A" CONTACT ZONE
 RIP VAN WINKEL SYNDICATE
 near Honeymoon Lake,
 Bruce Twp., Timisk. Dist., NE. Ontario
 Scale: 1" = 30'
 a. Hopkins 21 Aug. 1975

- LEGEND**
- 4 [Symbol] BASITE (ACID) LAVA
 - 1 [Symbol] ASPHALT (BASE) LAVA
 - [Symbol] SWAMP
 - [Symbol] BUSH ROAD
 - [Symbol] DIAM. DRILL HOLE
 - [Symbol] EDGE OF SWAMP
 - [Symbol] QUARTZ
 - [Symbol] ASSUMED GENL. CONTACT
 - [Symbol] E.M. CONDUCTOR
 - [Symbol] CLAIM POST CORNER
 - [Symbol] CAVED-IN TRENCH
 - [Symbol] EDGE OF OUTCROP
 - [Symbol] MINERAL CONTACT ZONE
 - [Symbol] SULPHIDES





DRAWING No 75-17A
 PLAN OF D.D.H.'S ON
 'B' or BRISCOE-BRYCE GOLDMINE ZONE
 SCALE: 1" = 30'
 BRYCE TR., LARGER LAKE MG. DIV.
 NE, ONT.

Drill Hole Intersections Projected Vert. 11.
 Apposed only

DDH # 75-6
 130-50
 Strike 335°
 Col. 1255' of B.L.P.L.
 900'E.

DDH # 75-5
 96.8 @ -48°
 Strike 335°
 Collar 345' of PL.
 700'E of rd.
 1125' rd.

DDH # 75-4
 177.3 @ -45°
 Strike 335° 10'E
 Collar 325'

DDH # 75-11
 803.400'E
 200' @ -45°
 Strike 335°

N. Boundary of T. 24227
 60' horiz. displacement
 Suspected Fault

Williams' O.P.L.

Williams' 8'E

Williams' 4'E

Williams' 0.P.L.

Williams' 8'E

Williams' 4'E

Williams' 0.P.L.

Williams' 8'E

Williams' 4'E

Williams' 0.P.L.

Williams' 8'E

