

SPEIGHT TOWNSHIP REPORT NO. 11

This file contains work performed by Castlebar Silver & Cobalt  
on claims:



41P09SE0604 11 SPEIGHT

010

L.264596

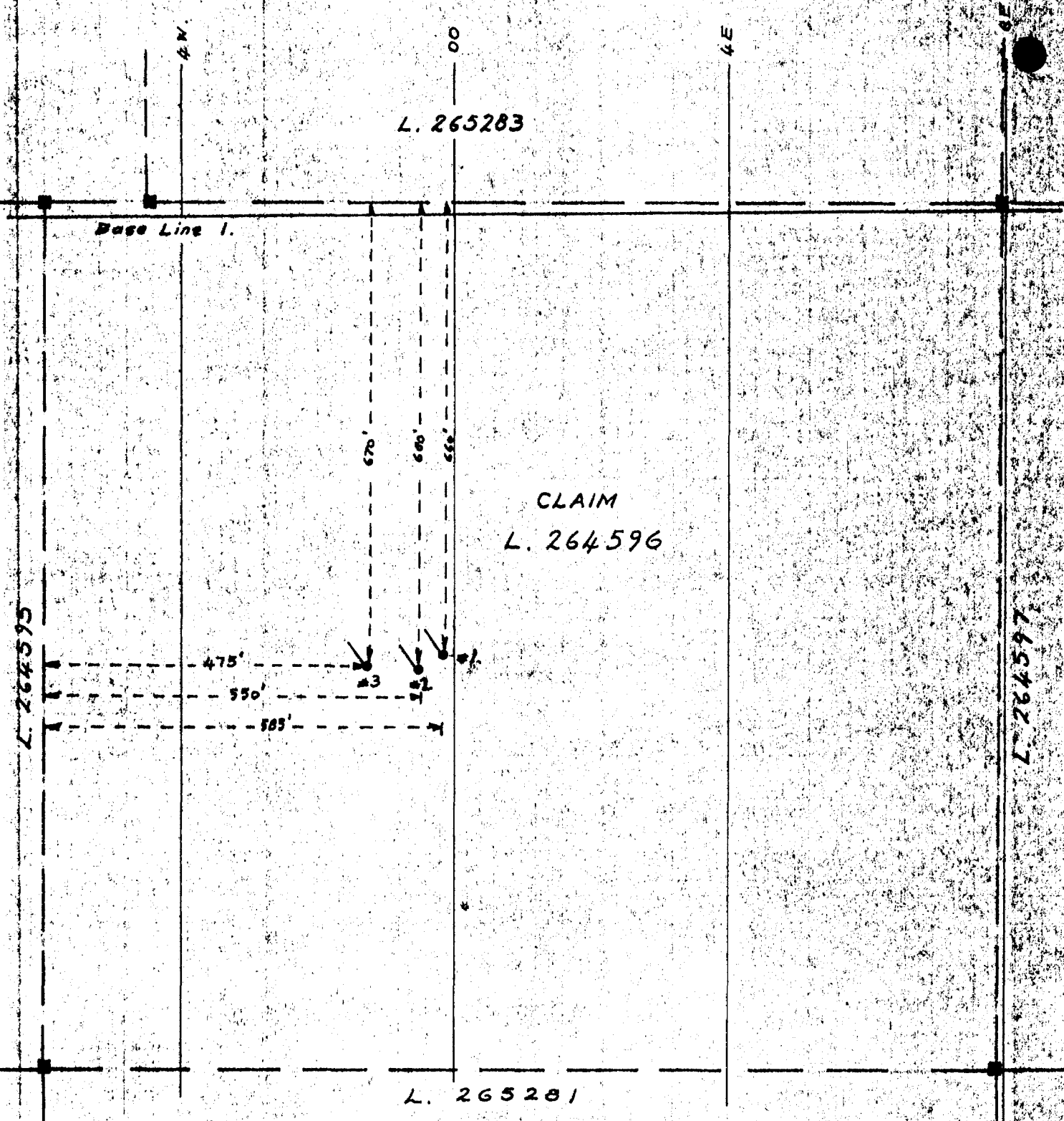
Hole # C-71X-1 70 Aug/71

C-71X-2 80 Aug/71

C-71X-3 70 Aug/71

3 220

191/71



LOCATION MAP  
CASTLEBAR SILVER & COBALT MINES LTD.  
SPEIGHT TWP - CLAIM NO. L. 264596  
D.D.H's C-71X-1, 2 & 3  
SCALE: 1" = 200'

NOTE: Drill core stored at drill site.

191/71

# DIAMOND DRILL RECORD

PROPERTY Castlebar - Speight Twp. Claim No 264596 HOLE NO. C-71X-1

SHEET NUMBER 1 SECTION FROM \_\_\_\_\_ TO \_\_\_\_\_ STARTED Aug. 9, 1971  
 LATITUDE Line O 6+ 348 DATUM \_\_\_\_\_ COMPLETED Aug. 12, 1971  
 DEPARTURE 0+13 W BEARING 306° ULTIMATE DEPTH 70  
 ELEVATION \_\_\_\_\_ DIP -45° PROPOSED DEPTH 70

DEPTH FEET	FORMATION	SAMPLE NO.	FROM	TO	WIDTH	ASSAY VALUES			
						Ag	Co		
0-7	Overburden casing								
7-70	Coarse grained db., flecked with red fels, magnetite common. Coarse patches near the end								
	@ 41'8", 2" grey calcite, trace pyrite, trace Co, minor fleck epidote, chlorite, calc, has granular appearance @ 45°	B3701	41'8"	41'11"	3"	.48	.14		
	@ 42'0", 2" wh. calc. qts. with wavy epidote lined fractures, tr. py. @ 55°	B3702	42'0"	42'3"	3"	.15			
	@ 42'8", 4" gy. wh. qts. calc. vein, tr. py. @ 55° also 1/8" str. tr. cpy.	B3703	42'6"	42'11"	5"	.28			
	@ 42'11" - 1" gr. calc. good vein, coarse & fine trace pyrite, main vein tr. argentite @ 45°	B3704	42'11"	43'1"	2"	6.10	.023		

E. Baudoin

DRILLED BY \_\_\_\_\_

SIGNED J.L. Tindale



# DIAMOND DRILL RECORD

PROPERTY Castlebar - Speight Twp. Claim No. 264596 HOLE NO. C-71X-2

SHEET NUMBER 1 SECTION FROM \_\_\_\_\_ TO \_\_\_\_\_ STARTED Aug. 13, 1971  
 LATITUDE Line O 6+69'S DATUM - COMPLETED Aug. 15, 1971  
 DEPARTURE O+55W BEARING 300° ULTIMATE DEPTH 80'  
 ELEVATION \_\_\_\_\_ DIP -45° PROPOSED DEPTH 80'

DEPTH FEET	FORMATION	SAMPLE NO.	FROM	TO	WIDTH	ASSAY VALUES				
0-6	overburden casing					Ag				
6-80	Coarse grd. db, red flecked, magnetite rich, as in hole #1. Decreasing coarseness in bottom 25' of hole									
	@ 51'5" ¼" gy.wh. calc, trace cpy. Pbs. @ 50° Some ZnS sample whole core	3706	51.5"	51'6"	1"					
	@ 51'11" = 2" gy. calc. granular pyrite, cpy, probable main vein, tr Co @ 50° - altered to serp. in parts	3707	51'11"	52'1"	2"					
	@ 53'7½" - 2" calc, altered, tr. py. cpy. @ 50° Perhaps same vein as in shaft Chlorite common. Some altn. to serpentine-tremolite	3708	53'7½"	53'10"	2½"					
	End of hole									

DRILLED BY E. Beaudoin

SIGNED   
J.L. Tindale

