



41P09SE0605 2.174 SPEIGHT

THE PROPERTY

The property consists of sixty (60) contiguous claims of which fifteen (15) were covered by the survey. Those claims covered were 265280-83, 264595-98, 264600-03 and 264593. The property is located in Speight Township, District of Timiskaming, Ontario.

Access to Speight Township can be gained by three possible ways (1) by taking a boat from Mountain Chutes down the Montreal River to Spring Lake and Spray Creek to Mendelssohn Lake which gives good access to Speight Twp. (2) a second route is by logging road which runs from Elk Lake to a point west of the property. However, the exact location and condition of the road is unknown by the author. (3) the quickest means of access is by float equipped aircraft from New Liskeard which can land on any of the lakes covered in the claim group.

The topography of the McKenzie Lake section can be described as being flat with steep drops over the diabase slope. In the Munro Lake section a steep diabase ridge runs between McKenzie Lake and Mendelssohn Lake. Areas of detailed examination were confined to (approx.) lots 5 and 7 of Con. 5, Speight Twp.

LINECUTTING

A total of 8.86 miles of picket line were cut over the width of the claim group between July 9 and July 20, 1970 under contract to Martin J. Sullivan of Kirkland Lake.

\* credits for line-cutting were given on file 2.175

A common base line was intended to serve the two groups of cross lines, however an error in sighting caused an off set on the western, or, McKenzie grid. A second base line was cut in approx. 800 ft. north of the No. 1 base line on the McKenzie Lake grid.

These lines were cut in mid summer, and, are clean and well defined.

#### REGIONAL GEOLOGY

With the exception of a small inlier of presumed Archean granite east of Munro Lake all of the bedrock is Proterozoic in age (McIlwaine 1970) this formation was not observed or encountered by the author.

The two mapped areas are underlain by the Lorrain formation of the Huronian supergroup. This consists of a fine to medium grained pink sandstone. Intruding into the sandstone is a fine grained greenish gray Nipissing diabase sill.

#### ECONOMIC GEOLOGY

There are two occurrences of silver in the claim group. These occurrences are found in the carbonate veins in the Nipissing diabase.

On claim No. 264592 of the McKenzie Lake grid is found the Taylor shaft and trenching complex. A sample taken from a 8" calcite-quartzite vein in the enlarged trench No.1 revealed 1-3% Co, .5-1% Mg., .1-.2% Ni and .1 oz/ton for Ag.

The only other occurrences of mineralization encountered on the McKenzie Lake grid was cobalt and eruthrite in trench No. 2. The assay values ran only 1.5% cobalt from a vein 12" wide.

South of Munro Lake between lines 0 and 4 west samples of trench and vein material were taken by J.L. Tindale during initial inspection of the showing. These assayed 181, 157 and 154 oz. of silver per ton. Ontario Government inspection and subsequent assay of this showing in 1969 revealed 130.5 and 349.6 oz. of silver per ton.

Associated with this showing are minor amounts of cobalt, chalcopyrite and galena. The vein is 3"- 5" wide dipping at 75° with a strike of 55° east of north. This vein was followed for 30 ft. by trenching.

It should be noted that only minute amounts of silver were visible.

#### CLAIMS COVERED

The geochemical survey was carried out along lines

... geological mapping

SOIL SAMPLING

There were a total of 376 possible sample sites of which 363 were sampled. This represents 96.5% coverage.

Soil sampling was done in seven days from August 24 to August 31, 1970.

Samples were taken from the "B" horizon, a light to reddish brown clay-loam. Those stations which were not sampled were usually water saturated bog material or had no soil horizons. A spade-shovel was used to expose the soil horizons and thus it facilitated the easy selection of soil, about ¼ lb, to represent the sample of that station.

The assaying of the samples was carried out by Technical Service Laboratories, 355 King Street West, Toronto 135, Ontario. They used the hot nitric acid test with determinations by atomic absorption.

RESULTS

The results of this sampling survey produced only one target anomaly of 16 ppm silver and 450 ppm. cobalt. Detailed sampling around this location, line 16 east 10 north revealed additional anomalous values of 1000 ppm. and 160 ppm. silver, these occurred on line 16 east 9 + 50 North and 9 + 75 North respectively.

There are three other anomalous silver values located on line 24 east; they are in the 1.1-1.4 ppm. range and are of no interest as they do not co-relate with the geology. These values may be caused by erratic silver bearing diabase float.

2.174

Background for the McKenzie Lake grid runs between 0.1 and 0.4 ppm. silver.

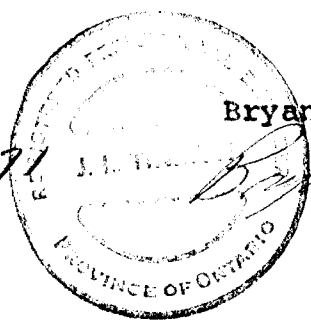
Geochemical soil sampling on the Munro grid failed to produce any anomalous values like those on the McKenzie grid. Specifically there were only two values that went above the background of 0.1-0.4 ppm.

Anomalous cobalt values do not seem to have any correlation with the geology. It may be safe to assume that these are erratic, and of no significance.

CONCLUSIONS

Only one geochemical anomaly was turned up by the survey. The intensity of the anomaly warrants further attention in the form of stripping and trenching.

*J. H. ...  
March 4/71*



Bryan Wilson

*Bryan Wilson*

RECEIVED  
MAR 5 1971  
PROJECTS  
SECTION

AREA OFFICE — 705  
TELEPHONE — 567-3010



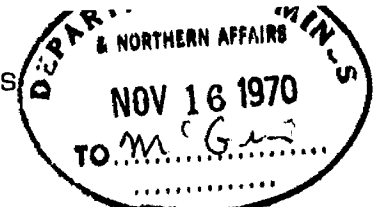
ONTARIO



41P09SE0605 2.174 SPEIGHT

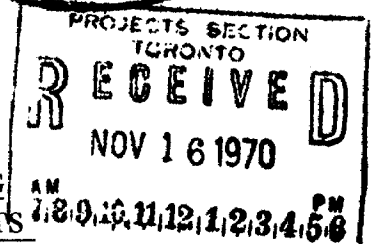
300

DEPARTMENT OF MINES AND NORTHERN AFFAIRS  
MINING LANDS BRANCH  
OFFICE OF THE MINING RECORDER



Fred W. Matthews,  
Supervisor, Projects Section,  
Ontario Department of Mines,  
Whitney Block,  
Parliament Buildings, Toronto.

NOTIFICATION OF RECORDING  
OF ASSESSMENT WORK CREDITS



Date of Recording of Work ... November 13th, 1970 .....

Recorded Holder ... Castlebar Silver and Cobalt Mines Ltd. .....

... 1601 - 8 King Street East, Toronto, Ontario. .....

(address)

Township or Area ... Speight Township .....

Type of Survey and number of Assessment Days Credits per claim	
GEOPHYSICAL Airborne <input type="checkbox"/>	Ground <input type="checkbox"/>
Magnetometer .....	days
Electromagnetic .....	days
Radiometric .....	days
.....	days
GEOLOGICAL .....	480 days
GEOCHEMICAL .....	240 days
SECTION 84 (14) .....	days

Mining Claims  
40 days Geological and 20 days Geochemical on each of mining claims L265280 to L265283 incl., L264592, L264593, L264595, L264596, L264597, L264600, L264601, and L264603.

*For Geological See 2.175*

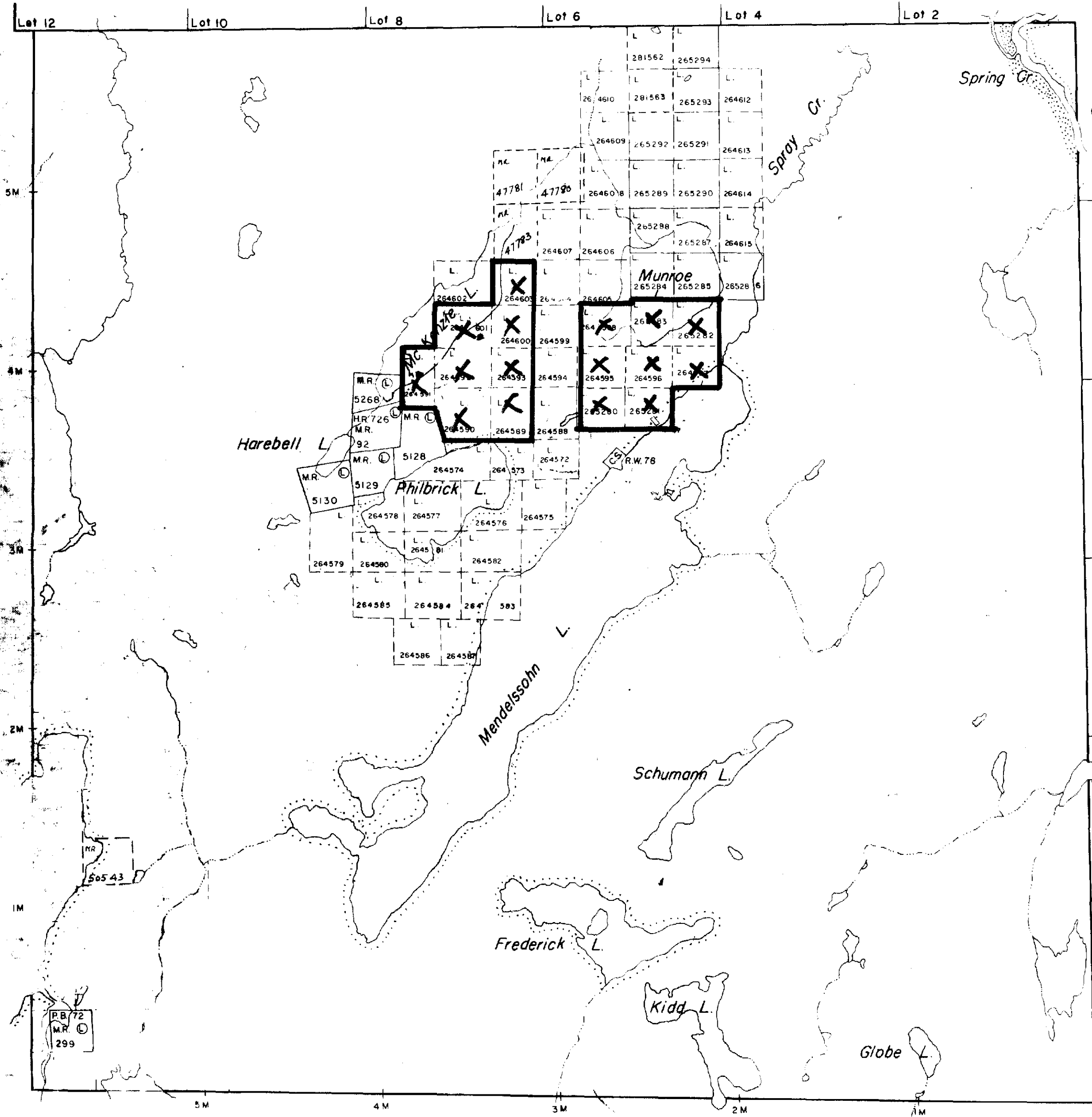
NOTICE TO RECORDED HOLDER

- Survey reports and maps in duplicate must be submitted to the Projects Section, Toronto within 60 days from the date of recording of this work.
- Reports and maps are being forwarded to Projects Section with this letter.

.....  
Mining Recorder.

c.c. Castlebar Silver & Cobalt Mines Ltd  
1601 - 8 King Street East,  
Toronto, Ontario.

Barber Twp.



Van Nostrand Twp.

THE TOWNSHIP  
CLAIM OF MAP  
**SPEIGHT**

2174

DISTRICT OF  
TIMISKAMING

LARDER LAKE  
MINING DIVISION

SCALE: 1-INCH=40 CHAINS

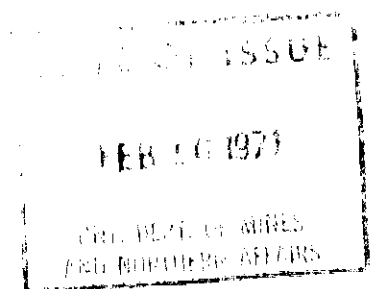
LEGEND

PATENTED LAND	Ⓟ
CROWN LAND SALE	C.S.
LEASES	Ⓛ
LOCATED LAND	Loc.
LICENSE OF OCCUPATION	L.O.
MINING RIGHTS ONLY	M.R.O.
SURFACE RIGHTS ONLY	S.R.O.
ROADS	—
IMPROVED ROADS	—
KING'S HIGHWAYS	—
RAILWAYS	—
POWER LINES	—
MARSH OR MUSKOGEE	—
MINES	X
CANCELLED	C.

NOTES

400' Surface rights reservation around all lakes and rivers.

Timagami Forest Reserve shown thus: [stippled pattern]



PLAN NO.- M-249

**ONTARIO  
DEPARTMENT OF MINES  
AND NORTHERN AFFAIRS**



12 W

8 W

4 W

0 0

4 E

8 E

12 E

2 6 4 5 9 8

2 6 5 2 8 3

MUNRO LAKE

BASE LINE 1

2 6 4 5 9 5

2 6 4 5 9 6

6 5 2 8 0

2 6 5 2 8 1

MENDELSSOHN LAKE

0.5  
5

1  
2

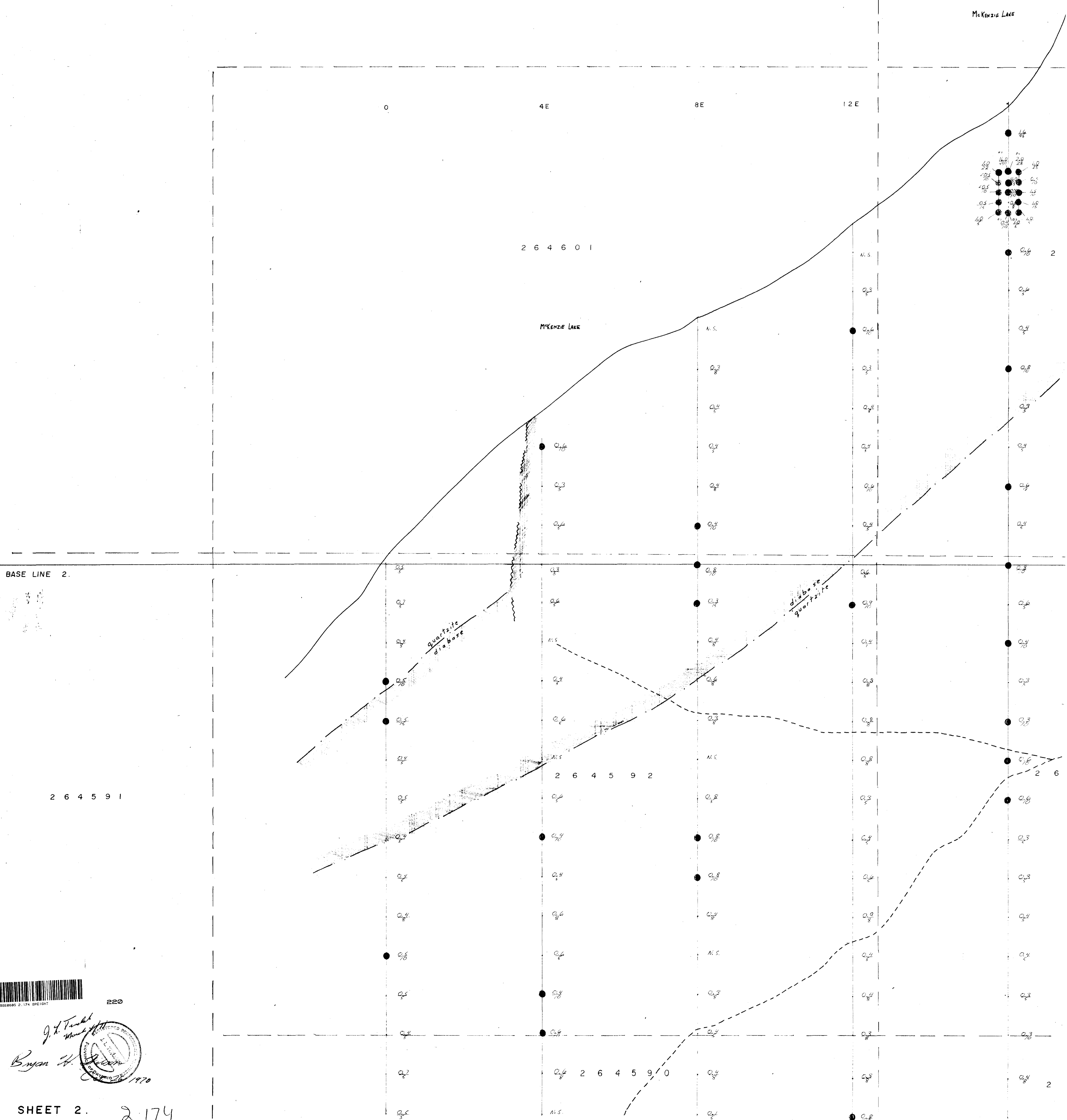
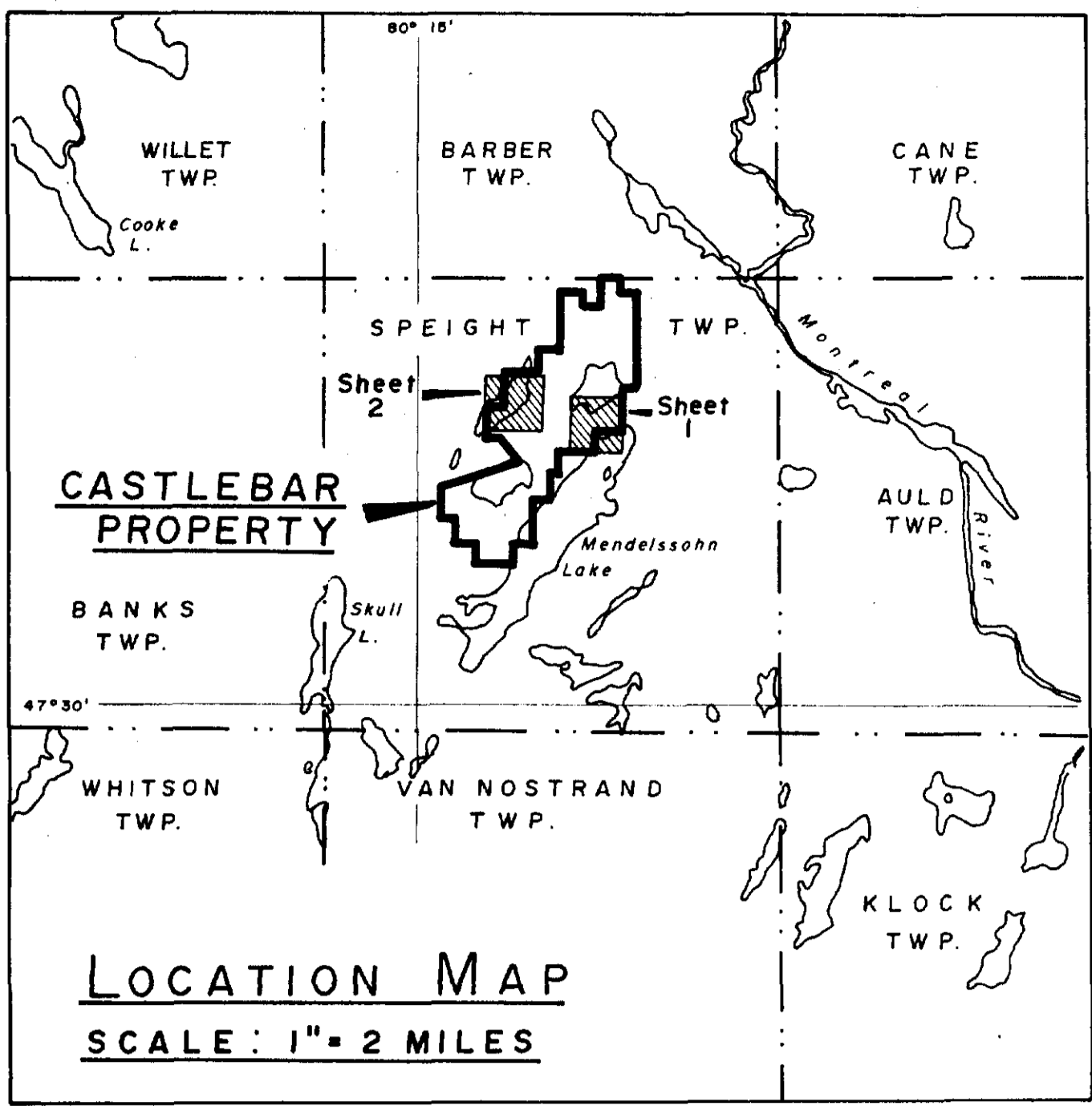
---

---

GEOCHEMICAL SURVEY  
CASTLEBAR SHEET  
SPEIGHT TWIN  
SCALE: 1" = 100'  
B. WILSON, J. L. TIND

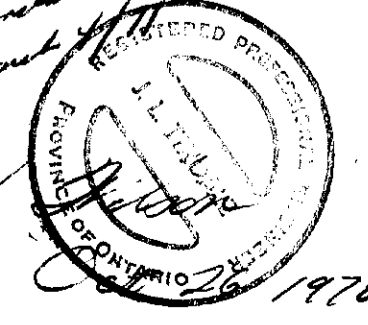


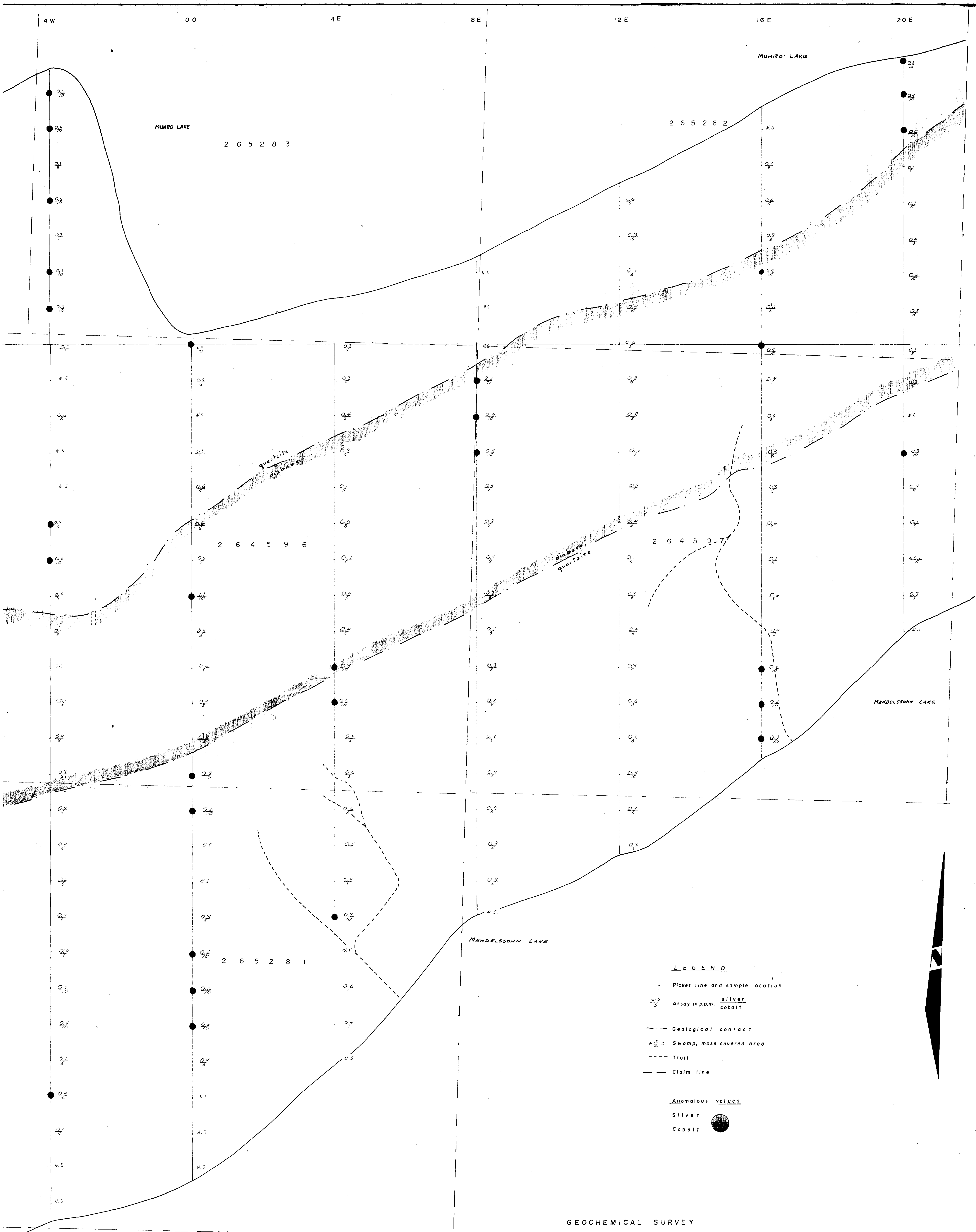




220

*J. H. Fendley*  
*Bryan H. Jensen*





**LEGEND**

- Picket line and sample location
- $\frac{0.5}{5}$  Assay in p.p.m.  $\frac{silver}{cobalt}$
- Geological contact
- $\dots$  Swamp, moss covered area
- Trail
- - - Claim line
- Anomalous values**
- Silver
- Cobalt

GEOCHEMICAL SURVEY  
**CASTLEBAR SILVER & COBALT MINES LTD.**  
 SPEIGHT TWP., ONTARIO  
 SCALE: 1" = 100'  
 B. WILSON, J. L. TINDALE

*J. H. ...*  
 AUG 24 - 31, 1970  
*Bryan H. Wilson*  
 Oct 26 1970

