



41P10NE0346 12 NICOL

010

Diamond Drilling

Township OF NICOL

Report NO: 12

Work performed by: INTERNATIONAL MINE SERVICES

Claim NO	Hole NO	Footage	Date	Note
MR. 37546	N-1	162'	Sept/67	
	N-2	164'	Sept/67	
MR. 37482	68-1	302'	Sept/68	
	3	628'		

Notes:

NICOL

TOWNSHIP REPORT #

12

This file contains work performed by Int'l Mine Services on claims:

MR. 37546

Hole # N-1

Sept 67

N-2

Sept 67

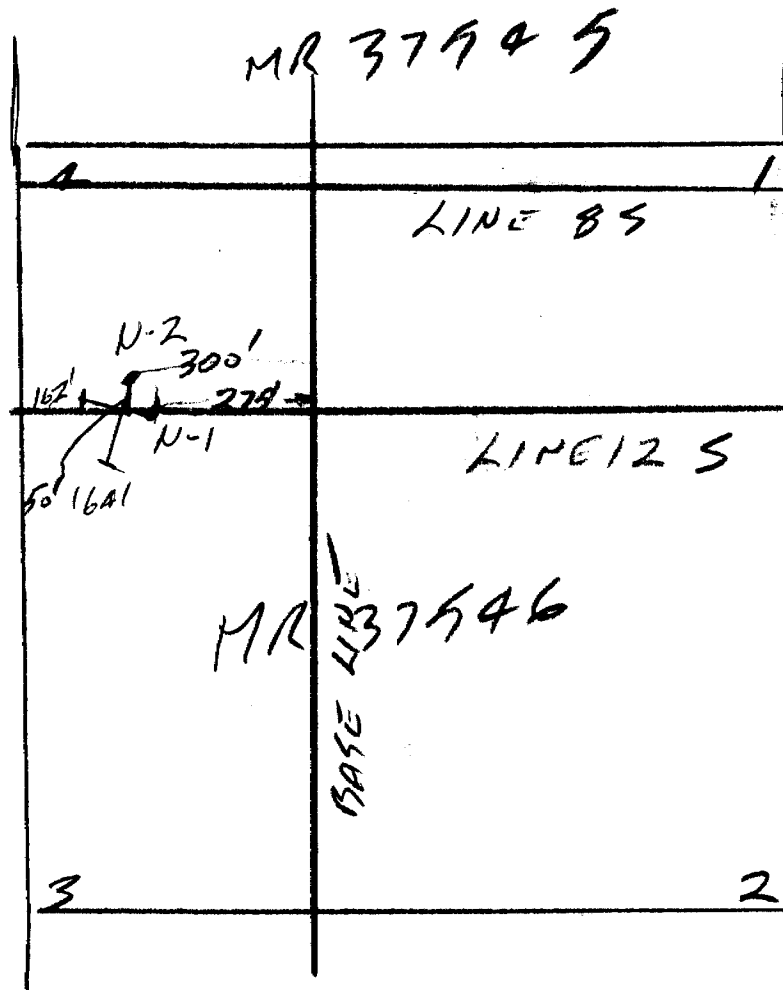
MR. 37482

Hole # 68-1

Sept 68

INTERNATIONAL MINE SERVICES

CLAIMS NICRA TWO



MR 37547

SKETCH OF DIAMOND DRILL
HOLE LOCATIONS

SEPT 1967

1" = 330'

J. Marber

DIAMOND DRILL RECORD

PROPERTY NICOLA TWP. HOLE NO. N-1

SHEET NUMBER ① SECTION FROM _____ TO _____ STARTED 13 SEPT 67
 LATITUDE LINE 12 S DATUM _____ COMPLETED 15 SEPT 67
 DEPARTURE 2+75 W BEARING N 80° W ULTIMATE DEPTH 162.0
 ELEVATION _____ DIP - 45° PROPOSED DEPTH 160

DEPTH FEET	FORMATION	SAMPLE NO.	FROM	TO	WIDTH	ASSAY VALUES
0 - 9.0	CASINGS - OVER BURDEN					
9.0 - 63.2	Huronian Cobalt Cong. - Gowanda Formation - Ans. + SEMI-ROUNDED PEBBLES OF WH. QTZ, RED GRANITES & SYENITES IN GREY TO REDDISH GREY MATRIX, MINOR PY. & SPEC. HEMATITE THROUGHOUT		SLUGS	50 - 70 70 - 90 90 - 110 110 - 130 130 - 150 150 - 162		
63.2 - 74.0	RED & GREY SANDS L.F. FINE GRAINED, SLIGHTLY UGAC BANDING @ 60°					
74.0 - 162.0	GREY CONGLOMERATE WITH GENERALLY SMALLER PEBBLES, PEBBLES ANGULAR & SEMI ROUNDED. POSSIBLY BASAL TILLITE, COULD BE UNDERLYING LORRAIN FORMATION. PY, CHALC, HEM. SPARSLEY & ERRATICALLY THROUGHOUT.					
@ 82.9	- 2" WH. QTZ, HEM.	364	82.6	83.2	0.6	
	END HOLE @ 162.0					

DRILLED BY BARKER

SIGNED [Signature]

DIAMOND DRILL RECORD

PROPERTY NICK TWP. HOLE NO. N-2

SHEET NUMBER ① SECTION FROM _____ TO _____ STARTED 16 SEPT 67
 LATITUDE L 12 S DATUM _____ COMPLETED 19 SEPT 67
 DEPARTURE 3400 W 0150 N BEARING S 20° W ULTIMATE DEPTH 164.0
 ELEVATION _____ DIP - 45° PROPOSED DEPTH 160

DEPTH FEET	FORMATION	SAMPLE NO.	FROM	TO	WIDTH	ASSAY VALUES
0 - 11.0	CASINGS - OVERBURDEN					
11.0 - 45.1	HURONIAN CORALT CONG, GOWGAND FORMATION, ANG. # SEMI-ROUNDED PEBBLES IN REDDISH-GREY MATRIX, OCC. SHORT SECTIONS BANNED I.F.; SPARSLEY MINERALIZED THROUGHOUT WITH S/PC. HEM. # MINOR PY.	365	12.6	13.3	0.7	
	@ 32.0 - 1/4" COLL, NUM @ 30'					
45.1 - 74.7	RED & GREY BANNED I.F. WITH MUONSTONE SEAMS @ 45°	366	74.1	74.5	0.4	
74.7 - 109.5	GREY PEARLE CONG. WITH FINER GRAINED MATRIX, BLOCKY, FLECK OF PY & MINOR CHALCO, THROUGHOUT					
	@ 83.1 - 2" WH. QTZ, CHLORITIC BLOCKY, TR. PY. @ 45°	367	83.0	83.2	0.2	
	@ 85.7 - CALC. TR. NUM @ 45°					
	@ 88.4 - 2" IRREG. PINK QTZ PY, HEM (SAME @ 82.9 - N-1)	368	88.1	88.6	0.5	

DRILLED BY BARKON

SIGNED JM aban

DIAMOND DRILL RECORD

PROPERTY _____

HOLE NO. N-2

SHEET NUMBER (2) SECTION FROM _____ TO _____ STARTED _____

LATITUDE _____ DATUM _____ COMPLETED _____

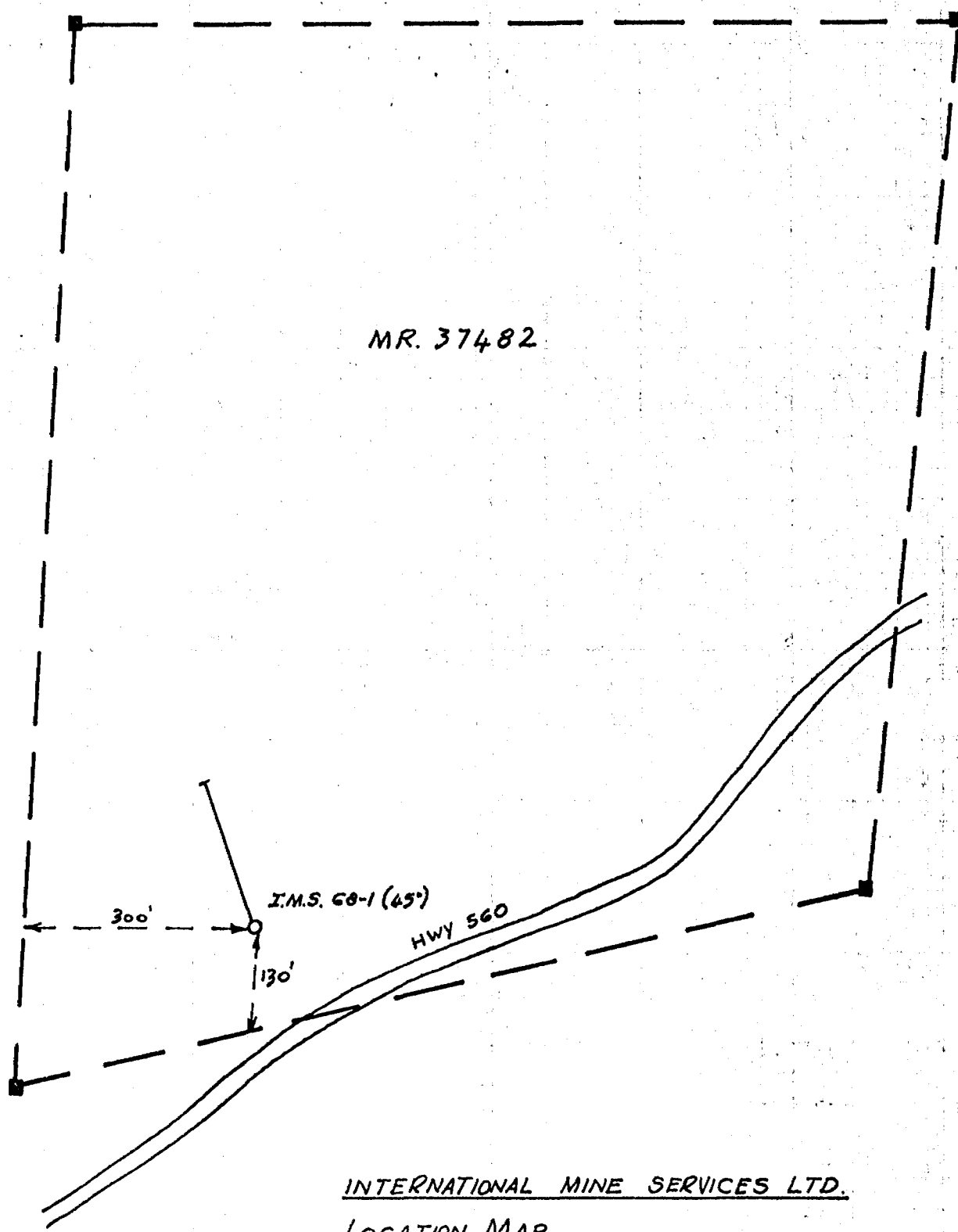
DEPARTURE _____ BEARING _____ ULTIMATE DEPTH _____

ELEVATION _____ DIP _____ PROPOSED DEPTH _____

DEPTH FEET	FORMATION	SAMPLE NO.	FROM	TO	WIDTH	ASSAY VALUES				
@ 90.3	- 2" ANS QZ, PY @ 25°									
@ 94.9	- 1/4" " " " @ 25°									
@ 98.8	- 2" DENSE CHLORITIC SEAM, PY.	369	98.6	98.9	0.3					
@ 102.0	- 1" BANDED QZ, PY. @ 60°	370	101.8	102.3	0.5					
104.5-164.0	SAME AS ABOVE, OCCASIONAL GRANITIC DYKES TO 2', SPARSE PY THROUGHOUT END HOLE @ 164.0									
	No SLUGS TAKEN - LOST WATER @ 22'									

DRILLED BY BARRON

SIGNED [Signature]



MR. 37482

I.M.S. 68-1 (45°)

HWY 560

300'

130'

INTERNATIONAL MINE SERVICES LTD.

LOCATION MAP

D.D.H. 68-1 ON CLAIM MR. 37482

NICOL TWP., ONTARIO

SCALE: 1" = 200'

Note: Core stored beside
drill hole.

DIAMOND DRILL RECORD

PROPERTY INTERNATIONAL MINE SERVICES
NICOL TWP.

HOLE NO. 68-1

SHEET NUMBER 1 SECTION FROM _____ TO _____ STARTED 23 SEPT. 1968.
 LATITUDE _____ DATUM _____ COMPLETED 26 SEPT. 1968.
 DEPARTURE _____ AZIMUTH BEARING = 340° ULTIMATE DEPTH 302'
 ELEVATION _____ DIP 45° PROPOSED DEPTH 300'

DEPTH FEET	FORMATION	SAMPLE NO.	FROM	TO	WIDTH	ASSAY VALUES		
0-6.0	Casing - Overburden							
6.0-169.0	Red & grey banded Lorraine Arrose, section 6' - 15' shows vugg & solution cavities, coring irregular and blocky to 75', banding becomes narrower and more regular as depth increases, sediments develop a mottled appearance & red layers become quite narrow as drilling nears the contact.							
169.0	Diabase - Sediment Contact.							
169.0-302.0	Grey Nipissing Diabase sill rock, fine grained near contact, but developing to med. grained @ 175', a few small blocky sections, several chloritic slips, very minor Py. irregularly throughout, past 200' the diabase becomes quite coarse grained with few slips & very good core recovery.							
@ 15.9	1/8" Calc, Chlor, Axinite @ 60°							
@ 205.0	1/2" Qtz, Calc, Axinite, minor							

BARRON DIAMOND DRILLING
 HAILKY BURY, ONT.

DRILLED BY _____

SIGNED J. Mather
J. Mather
 C.E.T.

DIAMOND DRILL RECORD

PROPERTY 2 HOLE NO. 68-1

SHEET NUMBER _____ SECTION FROM _____ TO _____ STARTED _____
 LATITUDE _____ DATUM _____ COMPLETED _____
 DEPARTURE _____ BEARING _____ ULTIMATE DEPTH _____
 ELEVATION _____ DIP _____ PROPOSED DEPTH _____

DEPTH FEET	FORMATION	SAMPLE NO.	FROM	TO	WIDTH	<i>Ag.</i>	ASSAY VALUES		
@ 272.7	pyrite @ 45° 1/4" Wh. Qtz, in green Axinite rich zone, minor Py. @ 45°	2041	204.5	205.1	0.6	1.02			
@ 282.0	1" Wh. Qtz in 2' zone of green axinite, flecked with purple axinite, minor Py. @ 45°	2042	281.7	282.7	1.0	8.06			
	END HOLE @ 302.0								

DRILLED BY BARRON

SIGNED J. Mather.