



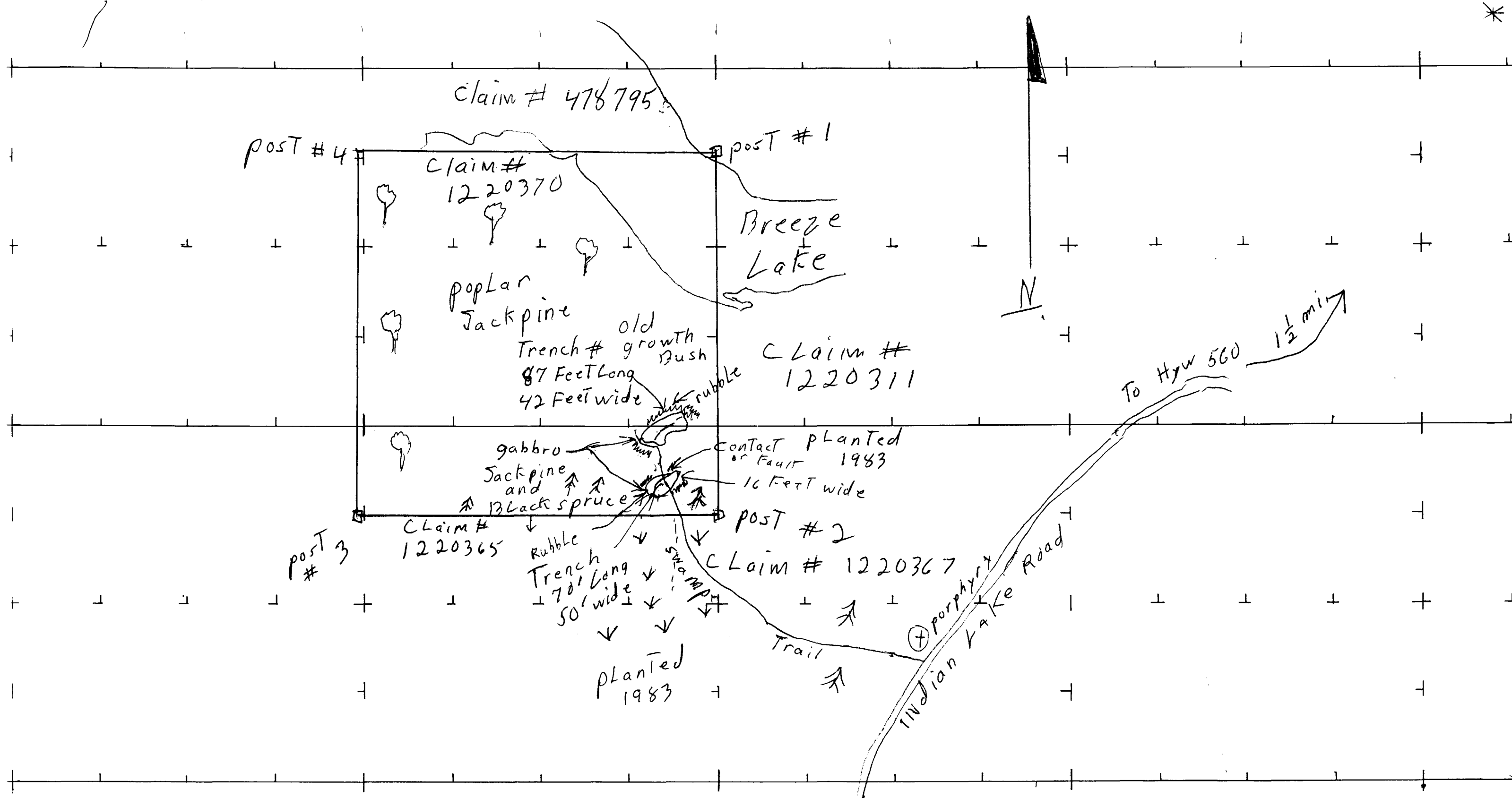
41P10NW2012 2.24215 TYRRELL

010

Purpose of These Trenches
is To Locate magnetic Fault
and To check anomalies of Mag.
Rock Types are Gabbro very little
pyrite, magnetic must be
diabase dyke - which I could not
locate, due to depth of overburden
however assays are pending
For Rocks Found

A. H. Curtis
SEPT 13/2002
PROSPECTOR.

2.24215



4 inches = 440 YARDS
SCALE

Lowland mature bush
Planted Forest

A. L. Curtis
SEPT 13/2002

CLAIM # 1220370
D GROUP OF TRENCHES



41P10NW2012 2.24215

TYRRELL

020

REPORT

ON

**Geological Mapping
Of
Trenches**
(September 2002)

Tyrrell Property

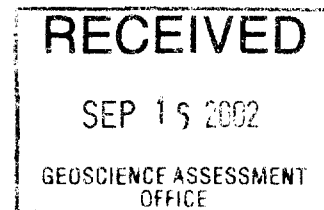
Tyrrell Township
Larder Lake Mining Division
North-eastern Ontario

UTM
Grid Zone 17, NAD. 83

NTS Map Sheet
41P10/11

2.24215

For
Archie LaCarte



Douglas Robinson P. Eng.
Doug Robinson Consulting

Table of Contents

1.0	SUMMARY.....	3
2.0	LOCATION.....	3
3.0	ACCESS.....	3
4.0	THE PROPERTY	3
5.0	PHYSIOLOGY AND VEGETATION.....	3
6.0	REGIONAL AND PROPERTY GEOLOGY	3
7.0	EXPLORATION RATIONAL.....	3
8.0	EXPLORATION PROGRAM	4
	Stripping	4
	Geological Mapping.....	4
9.0	DISCUSSION OF RESULTS	4
	Map Area A	4
	Map Area B.....	5
	Map Area C.....	5
10.0	RECOMMENDATIONS	5
11.0	REFERENCES	5
	CERTIFICATE OF QUALIFICATIONS	6

MAPS

Claim Map: Part of Tyrrell TP. Scale 1 cm = 200 m

Geology Map A: Scale 1 cm = 50 m

Geology Map B: Scale 1 cm = 50 m

Geology Map C: Scale 1 cm = 50 m

1.0 SUMMARY

September 10, 2002 the Author mapped three areas of stripping. This stripping was performed in 2002 by the Owner Mr. Archie LaCarte.

2.0 LOCATION

The property is located between at UTM coordinates 0500250-0500900mE and 5276600-5275050 mN (NTS 41P10/11) approximately 19 km west of Gowganda.

3.0 ACCESS

The property is accessed via Highway 560 leading east from Gowganda. The property is crossed by two forest access roads leading south from the highway: one approximately 19 km east from Gowganda and the other 1 km west of the first road.

4.0 THE PROPERTY

The property, consists of the following contiguous claims, located in north-central Tyrrell (Plan #G-3725) in the Larder Lake Mining Division. The claims are listed from east to west and north to south as follows: 1219126, 1219122, 1219123, 1220312, 1220311, 1220314, 1220371, 1220370, 1220369, 1220315, 1220365, 1220367, 1220360

Work was performed on claims 122031^{a.l.} (Map Area A), 1220315 (Map Area B) and 1220369 (Map Area C).

5.0 PHYSIOLOGY AND VEGETATION

The area mapped was jack pine, with poplar and white cedar nearby.

6.0 REGIONAL AND PROPERTY GEOLOGY

The geology was not reviewed by the author. The property was mapped by Battle Mountain Gold, probably in ~~1987~~ 1997 ^{a.l.}

The legend of a Battle Mountain Gold geological compilation map lists the following rock units: ultramafic volcanics (unit 1), mafic volcanics (unit 2), felsic volcanics (unit 3), chemical sediments (unit 4), clastic sediments (unit 5), mafic to ultramafic intrusives (unit 6) and felsic to intermediate intrusives (unit 7) and diabase (unit 8).

7.0 EXPLORATION RATIONAL

This exploration program was designed to map the most significant stripped areas.

8.0 EXPLORATION PROGRAM

Stripping

The owner, Mr. LaCarte stripped five areas during 2002.

Geological Mapping

September 10, 2002; the author mapped three of the stripped areas were at 1 cm = 50 metres. A central point of each of the map areas was located by using a 20 minute averaging period with a Garmin GPSXL GPS unit. The location of these reference points should be accurate within 5 metres. The mapping was then performed by a pace and compass grid marked by painted stones. Mapping was complicated by a 7 hour rain.

The maps were drafted September 12, 2002. The three map areas are located on the enclosed claim map.

The geological units used by Battle Mountain Gold were used by the author.

9.0 DISCUSSION OF RESULTS

The only rock units encountered were:

- gabbroic rock designated as unit 6g.
- felsite rocks designated as unit 7f
- feldspar porphyry designated as 7fp

Unit 6g was uniform massive and frequently fresh in appearance.

The felsite (7f) and feldspar porphyry (7fp) had a similar appearing aphanitic groundmass. The porphyry was distinguished by the presence vague white feldspar (and some orange) feldspar phenocrysts. A single outcrop located at 0500850E-5275150N (Map B) appears to have either hornblende or augite phenocrysts in addition to feldspar phenocrysts.

Map Area A

The Map Area A was dominated by gabbroic rocks. Disseminated pyrite is locally common. The west edge of the outcrop area is a 2 metre wide shattered zone with local thin quartz fracture filling and Fe-carbonate alteration along the fractures. Two felsite dikes with prominent disseminated pyrite were also identified.

The gabbro was generally fresh in appearance except for the western part of the outcrop.

The site of two samples assayed by Mr. Lacarte are reported as No.1 and No.2.

Map Area B

Map area B is dominated by feldspar porphyry. The western outcrop has prominent fracturing as 1-4 cm shears defined by gouge. A prominent joint set at strike 340° is also present. Fe-carbonate alteration is associated with the shearing. This alteration is strongest at the south edge of the outcrop.

White calcite fracture filling was observed in the southeast outcrop. The northeast outcrop appears altered and has variable hardness and has white quartz veining to 1 cm.

Map Area C

Map area C is dominated by felsite and feldspar porphyry. There is little to differentiate the rocks types except for vague phenocrysts. The phenocrysts of the southeast outcrop appear to have reddish alteration. Minor reddish colouration was also observed in the western outcrop. Minor pyrite and minor quartz fracture filling were also observed in the western outcrop

A minor gabbroic unit was observed.

10.0 RECOMMENDATIONS

The alteration including Fe-carbonate alteration and shearing appear to be of the type associated with gold deposits. Exploration should focus on the intensity of alteration, veining and pyretic mineralization.

11.0 REFERENCES

1998: Map by L.A. Waddell; Battle Mountain Gold. Scale 1:5000

CERTIFICATE OF QUALIFICATIONS

I, Douglas Robinson, of 24 Victoria Avenue, Swastika, Ontario hereby certify that:

1. I am a registered professional Engineer of the province of Ontario, No. 39322011.
2. I am a graduate of Queen's University in Kingston Ontario with an Honours Bachelor of Science, Geological Engineering 1975, and Northern College, School of Mines in Haileybury, Ontario, 1970.
3. I have been practising my profession since graduation.
4. The information contained in this report is the result of work done by myself and the references cited.
5. I have no ownership or any other financial interest in the property.

Respectfully submitted

Douglas Robinson

Douglas Robinson, P. Eng.
September 12, 2002



MAP A

0500250 E

0500300 E

5276600 N



Sb

Pj

Depression

7f Py

7f Py

Py

6g

6g

0.5 cm Guse
1600m

Quartz Veining
Fe-Carb. Alt. In
2 M. Shatter Zone
Along Edge Of
Outcrop

Py

6g

6g

No.1

No.2

Pj

TYRRELL PROJECT

1220317

Tyrrell Twp. Larder Lake Mining Division

Scale 1 cm = 50 m

- 8 diabase
- 7 felsic to intermediate intrusives
- 6 mafic to ultramafic intrusives
- 5 clastic sediments
- 4 chemical sediments
- 3 felsic volcanics
- 2 mafic volcanics
- 1 ultramafic volcanics
- f felsite
- fp feldspar porphyry
- edge of stripping
- edge of outcrop
- shear

Pj

Road

2.24215



Established 1928

Swastika Laboratories Ltd

Assaying - Consulting - Representation

Assay Certificate

2W-2329-RA1

Company: **ARCHIE LACARTE**

Date: SEP-10-02

Project:

Attn: A. Lacarte

We hereby certify the following Assay of 2 Rock samples submitted SEP-03-02 by .

Sample Number	Au oz/ton	Au Check oz/ton	Pt oz/ton
#1	0.107	0.071	<0.005
#2	<0.001	-	<0.005

One assay ton portion used.

Certified by 

5275250 N

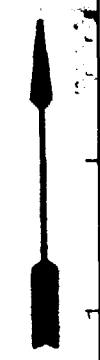
MAP B

TYRRELL PROJECT

Tyrrell Township, Larder Lake Mining Division

Scale 1 cm = 50 m

- 8 diabase
- 7 felsic to intermediate intrusives
- 6 mafic to ultramafic intrusives
- 5 clastic sediments
- 4 chemical sediments
- 3 felsic volcanics
- 2 mafic volcanics
- 1 ultramafic volcanics
- f felsite
- fp feldspar porphyry
- edge of stripping
- edge of outcrop
- .-.- shear



1220315

0500800E

0500850E

0500900E

5275200 N

5275150 N

1 Cm Shear 262°

2-4 Cm Shear 252°

1-2 Cm Shear 256°

Shear 232°

254° Shear

Local Fe Carb Alteration Strongest At South Edge

Quartz Veining

Po

Cw

Appears Altered Variable Hardness White Quartz Veining

Po

Cw

Road

Calcite Fracture Filling

7fp

7fp

7fp

7fp

7fp

6g

7fp

7fp

7fp

Map C

0500450E

0500500E

TYRRELL PROJECT

Tyrrell Twp. Larder Lake Mining Division

Scale 1 cm = 50 m

- 8 diabase
- 7 felsic to intermediate intrusives
- 6 mafic to ultramafic intrusives
- 5 clastic sediments
- 4 chemical sediments
- 3 felsic volcanics
- 2 mafic volcanics
- 1 ultramafic volcanics

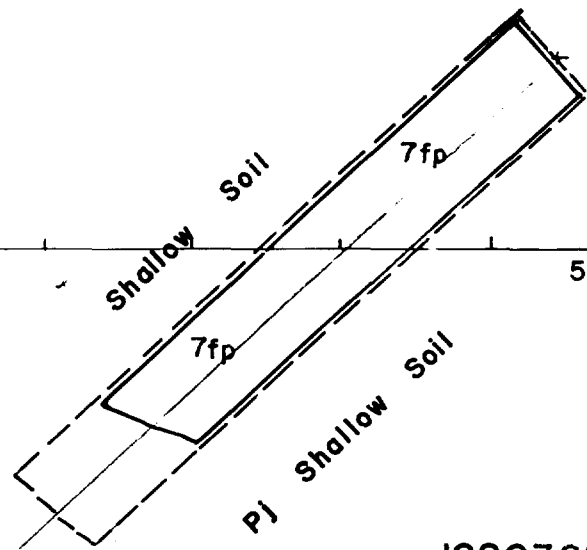
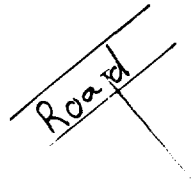
f felsite

fp feldspar porphyry

--- edge of stripping

----- edge of outcrop

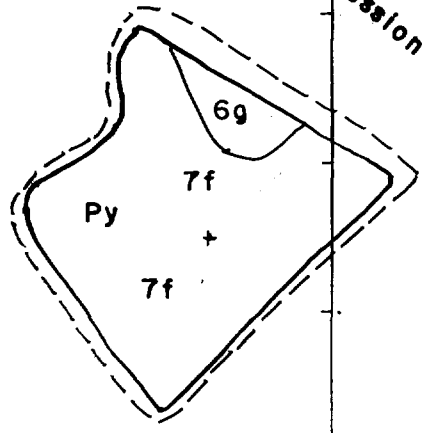
- - - - shear



5275.100N

Depression

1220369



Red Feldspar

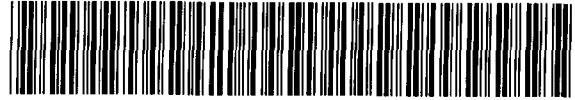
5275050N

Work Report Summary

Transaction No: W0280.01456 Status: APPROVED
 Recording Date: 2002-SEP-13 Work Done from: 2002-AUG-14
 Approval Date: 2002-SEP-17 to: 2002-SEP-07

Client(s):

113513 BURDA, DAVID F.
 155166 LACARTE, ARCHIE ALBANY



Survey Type(s):

GEOL PMECH

41P10NW2012 2.24215 TYRRELL

900

Work Report Details:

Claim#	Perform	Perform Approve	Applied	Applied Approve	Assign	Assign Approve	Reserve	Reserve Approve	Due Date
L 1189924	\$0	\$0	\$800	\$800	\$0	0	\$0	\$0	2003-NOV-20
L 1190032	\$0	\$0	\$400	\$400	\$0	0	\$0	\$0	2003-NOV-20
L 1191963	\$0	\$0	\$1,600	\$1,600	\$0	0	\$0	\$0	2006-OCT-31
L 1219122	\$0	\$0	\$400	\$400	\$0	0	\$0	\$0	2003-OCT-04
L 1219123	\$0	\$0	\$400	\$400	\$0	0	\$0	\$0	2003-OCT-04
L 1219126	\$0	\$0	\$400	\$400	\$0	0	\$0	\$0	2003-OCT-04
L 1219130	\$0	\$0	\$400	\$400	\$0	0	\$0	\$0	2003-OCT-16
L 1219131	\$0	\$0	\$800	\$800	\$0	0	\$0	\$0	2003-OCT-16
L 1220090	\$0	\$0	\$400	\$400	\$0	0	\$0	\$0	2003-OCT-16
L 1220098	\$0	\$0	\$400	\$400	\$0	0	\$0	\$0	2003-SEP-17
L 1220312	\$450	\$450	\$0	\$0	\$450	450	\$0	\$0	2004-SEP-17
L 1220315	\$4,000	\$4,000	\$0	\$0	\$4,000	4,000	\$0	\$0	2004-SEP-17
L 1220317	\$2,800	\$2,800	\$400	\$400	\$2,400	2,400	\$0	\$0	2003-SEP-17
L 1220318	\$0	\$0	\$400	\$400	\$0	0	\$0	\$0	2003-SEP-17
L 1220319	\$0	\$0	\$800	\$800	\$0	0	\$0	\$0	2003-SEP-17
L 1220355	\$0	\$0	\$400	\$400	\$0	0	\$0	\$0	2003-SEP-17
L 1220356	\$0	\$0	\$400	\$400	\$0	0	\$0	\$0	2003-SEP-17
L 1220357	\$0	\$0	\$400	\$400	\$0	0	\$0	\$0	2003-SEP-17
L 1220358	\$0	\$0	\$400	\$400	\$0	0	\$0	\$0	2003-SEP-17
L 1220359	\$0	\$0	\$400	\$400	\$0	0	\$0	\$0	2003-NOV-13
L 1220361	\$0	\$0	\$400	\$400	\$0	0	\$0	\$0	2003-SEP-17
L 1220366	\$0	\$0	\$400	\$400	\$0	0	\$0	\$0	2003-SEP-18
L 1220367	\$600	\$600	\$0	\$0	\$600	600	\$0	\$0	2004-SEP-18
L 1220368	\$0	\$0	\$400	\$400	\$0	0	\$0	\$0	2003-SEP-18
L 1220369	\$1,200	\$1,200	\$0	\$0	\$1,200	1,200	\$0	\$0	2004-SEP-18
L 1220370	\$1,750	\$1,750	\$0	\$0	\$1,750	1,750	\$0	\$0	2004-SEP-18
	\$10,800	\$10,800	\$10,800	\$10,800	\$10,400	\$10,400	\$0	\$0	

External Credits: \$0

Reserve:

\$0 Reserve of Work Report#: W0280.01456

\$0 Total Remaining

Status of claim is based on information currently on record

Date: 2002-SEP-26

GEOSCIENCE ASSESSMENT OFFICE
933 RAMSEY LAKE ROAD, 6th FLOOR
SUDBURY, ONTARIO
P3E 6B5

ARCHIE ALBANY LACARTE
GENERAL DELIVERY
GOWGANDA, ONTARIO
P0J 1J0 CANADA

Tel: (888) 415-9845
Fax: (877) 670-1555

Submission Number: 2.24215
Transaction Number(s): W0280.01456

Dear Sir or Madam

Subject: Approval of Assessment Work

We have approved your Assessment Work Submission with the above noted Transaction Number(s). The attached Work Report Summary indicates the results of the approval.

At the discretion of the Ministry, the assessment work performed on the mining lands noted in this work report may be subject to inspection and/or investigation at any time.

If you have any question regarding this correspondence, please contact STEVEN BENETEAU by email at steve.beneteau@ndm.gov.on.ca or by phone at (705) 670-5855.

Yours Sincerely,



Ron Gashinski
Senior Manager, Mining Lands Section

Cc: Resident Geologist

David F. Burda
(Claim Holder)

Archie Albany Lacarte
(Assessment Office)

Assessment File Library

Archie Albany Lacarte
(Claim Holder)

