

QPAP GRANT



41P11NE0058 OP93-651 FAWCETT

010

PROSPECTING, RECON MAPPING, LINE-CUTTING,

GEOPHYSICS & SAMPLING;

CLAIM 1150701, FAWCETT, TOWNSHIP

CLAIM 1150697, MacMURCHY TOWNSHIP,

SHININGTREE AREA, LARDER LAKE MINING DIVISION

RAY GARVEY

108 - 16 THE LINKS RD.

WILLOWDALE, ONTARIO

M2P 1T5

(416) 223-2052

JANUARY, 1994

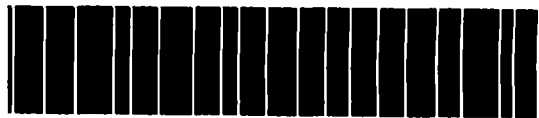


TABLE OF CONTENTS

	Page No.
1. INTRODUCTION	1
2. SURVEY AND GRID COVERAGE	6
3. FIELD PROCEDURE	7
4. REGIONAL GEOLOGY	8
5. PROPERTY GEOLOGY	9
6. GEOPHYSICS	10
7. DISCUSSION OF RESULTS	12
8. CONCLUSIONS AND RECOMMENDATIONS	14

APPENDICIES

- Appendix A Mining Claim Appeal Data
- Appendix B Description of Rock Samples
- Appendix C Assay Results

INTRODUCTION

Over the period May 15 to Dec 10, 1993, the writer carried out a program of line-cutting, prospecting, geophysics, recon mapping and sampling in the Shiningtree area of northern Ontario, funded by the Ontario Prospector's Assistance Program grant No. OP93-651. The work was carried out on two separate claims; claim 1150697 in MacMurchy Township straddling the eastern end of Houston Lake, previously worked under OPAP grant No. OP92-136, and claim 1150701 in Fawcett Township 400m south of the Fort Knox base metals discovery and 1200m east of the recently announced Strike Minerals gold discovery (refer to FIG.'S 1, 2, 2a, 3, & 3a).

Both claims were staked following the lifting of the Bear Island Land Claim Caution which withdrew lands within a 134 Township area from staking or prospecting since May, 1978. Two gold mines in Tyrrell and MacMurchy Township produced over 34,000 ounces of gold during the period 1939-42. Base metals were discovered in Fawcett Township in 1991 and in November, 1993, a significant gold discovery was announced immediately southwest of the base metals occurrence.

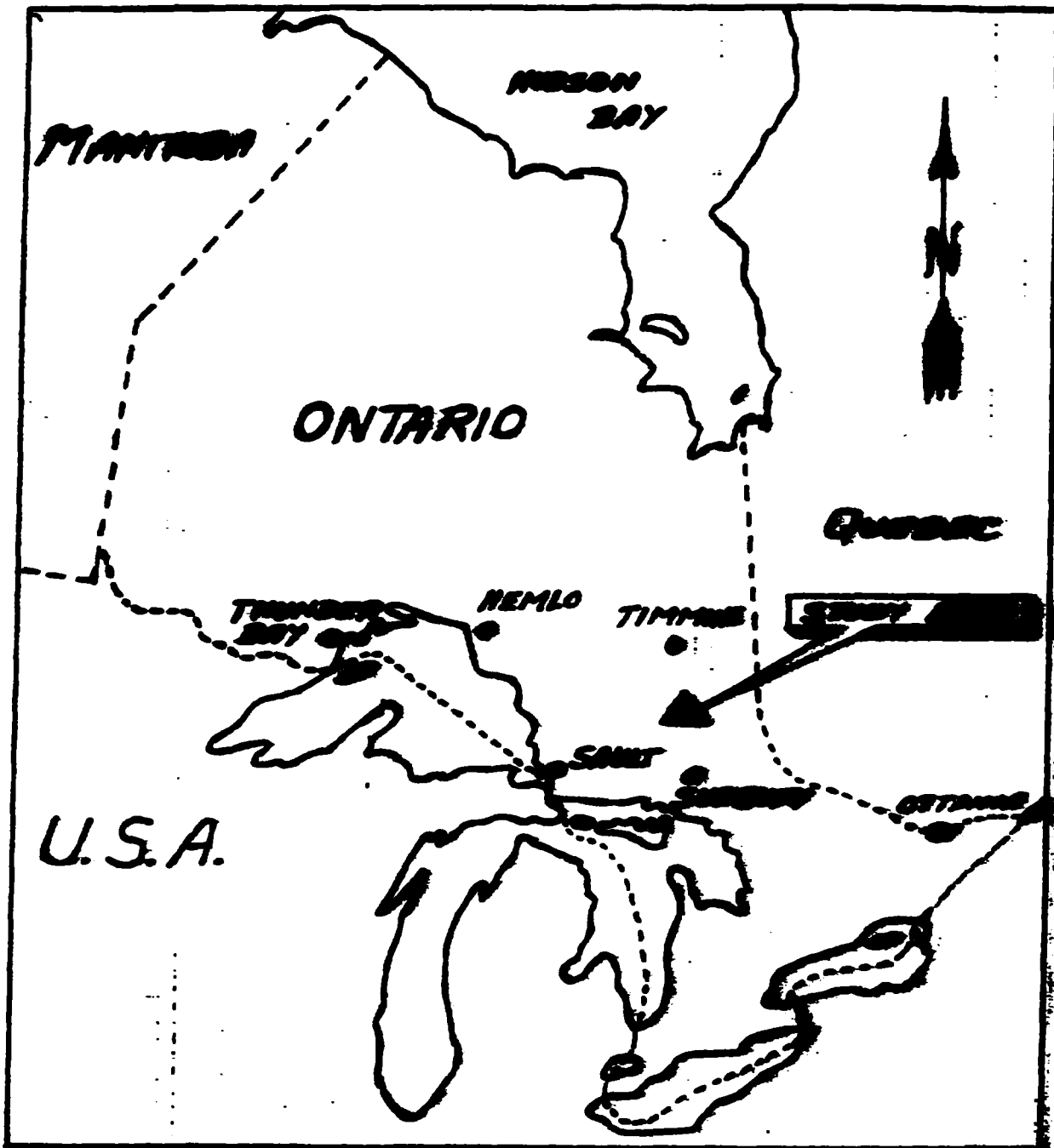
Claim 1150697 is comprised of 15 claim units and is easily accessible by travelling west a distance of approximately 30 km from Gowganda along Hwy 560.

Claim 1150701 is comprised of 3 units, and staddles the West Montreal River, and can be reached by travelling approximately 20 km northeast from the village of Shiningtree on Hwy 560 and thence south on a logging road approximately 8 km to the Fort Knox discovery, and the remaining 400m on foort. The writer resided in a tent on the West Montreal River to complete the work as well as a brief stay on

the north shore of Houston Lake.

As a result of the announcement of a gold discovery in Fawcett Township near Papoose Creek along the west shore of Granite Lake the writer staked claim 1200892, (a re-staking of claim 1185839), Dec. 7, 1993, tying on to the west boundary of claim 1150701. This 6 unit claim would significantly enhance the prospective value of claim 1150701; however claim 1200892 has yet to be recorded due to irregularities in administrative procedure at the office of the Mining Recorder and the matter is currently under appeal with the Mining & Lands Commissioner (refer to Appendix A).

FIG. 1

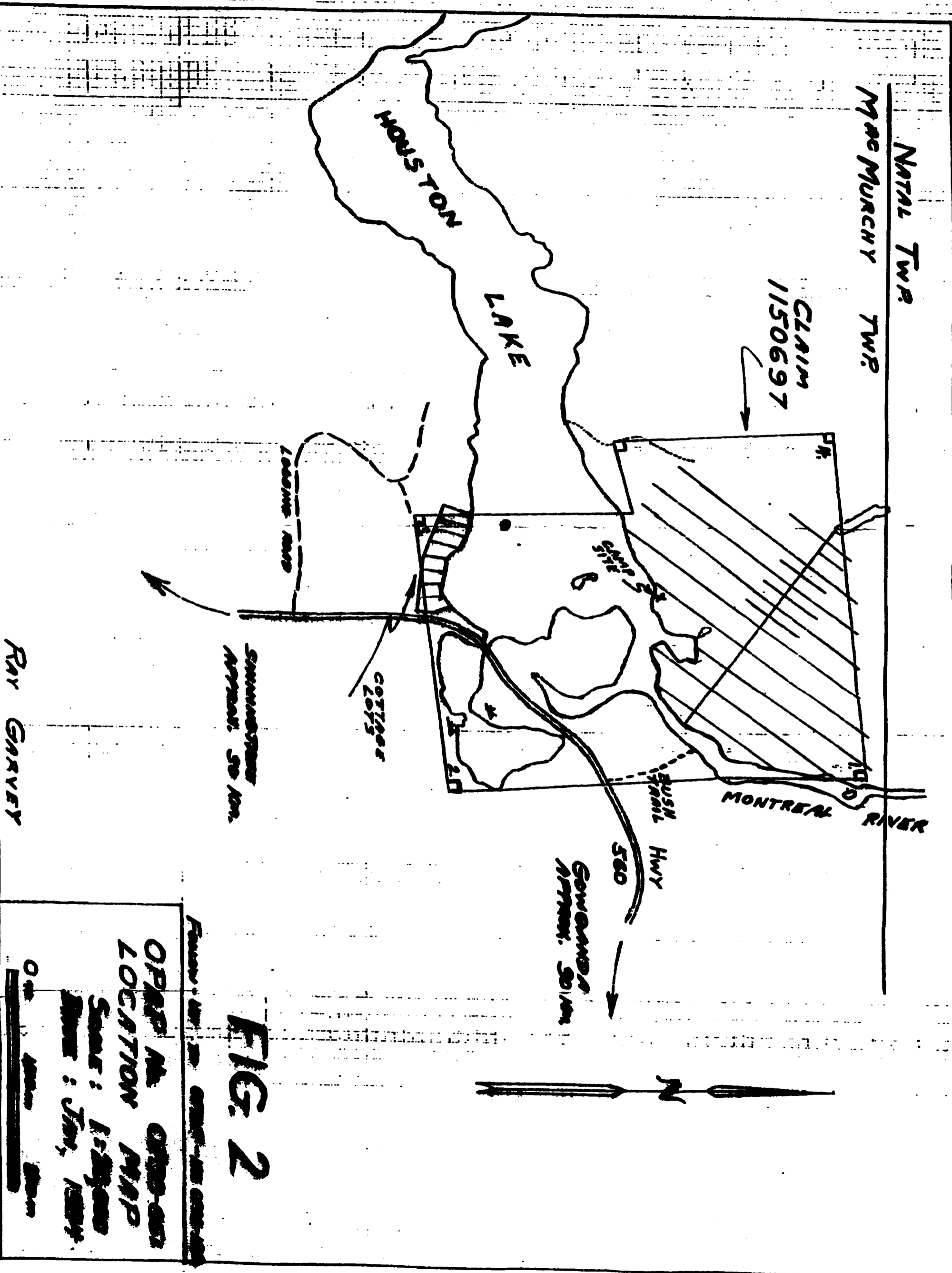


LOCATION MAP

OPAP No. OP93-651
M^{AC}MURPHY TOWNSHIP
FANGETT TOWNSHIP

January, 1984

Follow-up TO OPAP-No. OP92-136



RAY GARVEY

FIG. 2

FROM: [unclear] TO: [unclear]

OPAP No. [unclear]
 LOCATION MAP

Scale: 1:5000
 Date: Jan, 1984

Other [unclear]

ASQUITH TOWNSHIP

5M

4M

TRS.
2406

1200734

1200733

Popoese
1180633

1182223

1182222

1200735
Granite

1185694

1189634

1182102

1182224

1182220

1180261

1182400

1182401

1200736
Granite

Lake

1186547

1180697

1182107

1185839

1182221

1180629

1182103

1182105

1182106

1182108

1182109

1182110

1182111

1182112

1182113

1182114

1182115

1182116

1182117

1182118

1182119

1182120

1182121

1182122

1182123

1182124

1182125

1182126

1182127

1182128

1182129

1182130

1182131

1182132

1182133

1182134

1182135

1182136

1182137

1182138

1182139

1182140

1182141

1182142

1182143

1182144

1182145

1182146

1182147

1182148

1182149

1182150

1182151

1182152

1182153

1182154

1182155

1182156

1182157

1182158

1182159

1182160

1182161

1182162

1182163

1182164

1182165

1182166

1182167

1182168

1182169

1182170

1182171

1182172

1182173

1182174

1182175

1182176

1182177

1182178

1182179

1182180

1182181

1182182

1182183

1182184

1182185

1182186

1182187

1182188

1182189

1182190

1182191

1182192

1182193

1182194

1182195

1182196

1182197

1182198

1182199

1182200

1182201

1182202

1182203

1182204

1182205

1182206

1182207

1182208

1182209

1182210

1182211

1182212

1182213

1182214

1182215

1182216

1182217

1182218

1182219

1182220

1182221

1182222

1182223

1182224

1182225

1182226

1182227

1182228

1182229

1182230

1182231

1182232

1182233

1182234

1182235

1182236

1182237

1182238

1182239

1182240

1182241

1182242

1182243

1182244

1182245

1182246

1182247

1182248

1182249

1182250

1182251

1182252

1182253

1182254

1182255

1182256

1182257

1182258

1182259

1182260

1182261

1182262

1182263

1182264

1182265

1182266

1182267

1182268

1182269

1182270

1182271

1182272

1182273

1182274

1182275

1182276

1182277

1182278

1182279

1182280

1182281

1182282

1182283

1182284

1182285

1182286

1182287

1182288

1182289

1182290

1182402

1185839

1185840

1150701
River

1185841

1185838

1185713

118

FIG. 2a.

SURVEY GRID AND COVERAGE

Following up on the 1992 work on claim 1150697 the writer embarked on a program of prospecting and reconnaissance mapping of an area north of Houston Lake in the region of a weak VLF and magnetic anomaly in an effort to determine the potential of the property and to increase its desirability to a developer. In addition, representative samples were collected in areas where mineralization was believed to be significant. Random traverses were run and the old grid was used for topographic control. "New" outcrops, and sample locations are plotted on FIG. 3 at a scale of 1 : 2,000.

Sample descriptions and assay results can be found in Appendices B & C.

Claim 1150701 in Fawcett Township was covered by E-W traverses 450m in length at 100m spacing with geophysical readings taken at 25m intervals.

A 1200m base-line was established roughly parallel to the West Montreal River with 150m of offset at 13+00S (refer to FIG. 3a).

Numerous random traverses were run in an attempt to locate outcrop exposure along the river, and in the northwest quadrant of the claim where outcrops are more numerous.

The grid consists of approximately 6.5 km of lines over which 210 VLF-EM and magnetic readings were taken. The magnetic data are plotted on FIG. 5, and the VLF data are plotted on FIG. 4; both maps at a scale of 1 in. equals 50m.

FIELD PROCEDURE

In the case of claim 1150697, prospecting traverses were very closely spaced using the previous year's grid as control to locate outcrop that escaped observation the previous season. In 1992 a geological environment of predominantly intermediate to felsic volcanics with minor interflow sediments and weakly banded iron formation was indicated near a weak magnetic and VLF-EM anomaly. Consequently the investigation was restricted to an area north of Houston Lake. Outcrop not previously found was examined and sampled if considered significant.

For claim 1150701 the entire claim was covered by a nominal 100m grid. The northwest quadrant exhibited considerable outcrop exposure and therefore prospecting traverses were not restricted to grid lines. The southern and eastern portions of the claim are covered by overburden consisting largely of fine sand. Topography is relatively flat with a few small scattered swampy sections and prospecting traverses were restricted to the geophysical grid. Geophysical readings were taken at 25m intervals.

The magnetic survey was carried out as the last phase of the program after ice had formed on the West Montreal River to allow continuous reading of the lines. Before freeze-up areas on either side of the river were surveyed separately by VLF-EM methods for simplicity.

REGIONAL GEOLOGY

The geology of MacMurchy and Fawcett Townships is shown on two preliminary sheets, p.765 and p.819, issued by the Ministry of Natural Resources at a scale of one inch to one quarter mile and are accompanied by descriptive notes. The townships are located in the southern part of the Shiningtree Area Greenstone belt which extends to Timmins on the north, and east through Kirkland Lake. The rocks show considerable local variations, are, often quite schistose, and have been intruded by numerous diabase, granite and quartz-feldspar porphyry dykes. Quartz veining is commonly associated with the volcanics, varying in width from narrow stringers up to veins of fifty feet in width. The veins, along with silicified shear zones, are often mineralized with pyrite, pyrrhotite and chalcopyrite and frequently contain gold.

All formations are Precambrian in age and are covered by a thin blanket of Pliestocene and recent deposits. The early Precambrian rocks are represented by chemical sediments and mafic through felsic volcanics, all of which are intruded by mafic and felsic plutonic rocks and diabase dykes. Middle Precambrian rocks are represented by both Nipissing-Type diabase dykes and sills, and Huronian Sediments of the Gowganda Formation which unconformably overlie the volcanic assemblages.

PROPERTY GEOLOGY

The predominant rock types underlying claim 1150697 are mafic pillowed flows, interflow sediments, iron formation, and felsic volcanics varying from porphyritic to aphanitic. The entire sequence is folded and trends approximately N40W. Changes in strike are the result of folding and probably warping caused by granitic batholith emplacement to the southwest.

In the case of claim 1150701, outcrops observed are granite, porphyritic granite and associated pedmatitic lenses of the Miramichi Batholith. A major structure, referred to as the Michiwakenda Lake Fault, strikes SSE through Granite Lake just to the west of the claim and a bay off Granite Lake striking SE represents a subsidiary break related to the Michiwakenda break and may be a controlling factor for mineralization in the area. This possibility becomes more significant following the announcement of a gold discovery at Papoose Creek on the west shore of Granite Lake. Shear zones are present in rock types in the area and range up to 1 km in length. Shears of this nature often contain quartz veining and alteration and although they have seen a significant amount of prospecting over the years, considerable work remains to be done.

Historically the most important discovery was the Tyrannite Mine, however early work includes extensive underground development on the properties of Ronda Gold Mines, Bilmac Gold Mines, Lake Caswell Mines, Gold Belle Mines, and Hiview Gold Mines. Several other shafts were sunk in the area but were usually less than one hundred feet in depth.

GEOPHYSICS

Magnetometer Survey

The magnetometer survey carried out on claim 1150701 used a Scintrex MP-2-100 Fluxgate Magnetometer. This measures variations in the vertical component of the earth's magnetic field to an accuracy of +5 gammas (refer to Appendix D -Instrument Specification Sheet). Readings were taken at 25m intervals along survey lines for a total of 210 stations covering 6.5 kilometers of line. Base line station values were assigned by repeated readings along the base-line noting time of reading and manually calculating magnetic variations with respect to time. Survey readings were then tied in to base-line values and rounded off to the nearest 10 gamma value. A plan map (FIG. 5 at a scale of 1:2,000) of the mag survey results is included in the rear cover of this report. Contouring is at 50 gamma intervals.

VLF-EM Survey

The electromagnetic survey was completed using a Geonics EM-16 unit. The VLF method is passive in that employs the radiation of powerful military radio transmitters as the primary signal. In this survey, the station at Cutler, Maine (NAA) was used operating on a frequency of 24.0 KHz (refer to Appendix D -Instrument Specification Sheet). The EM-16 receiver is used to measure the vertical components of the secondary fields created by the primary signal. The receiver has two inputs, with two receiving coils built into the instrument. One coil has a normally vertical axis, the other is horizontal and tilt angle is calibrated in percentages. This is the in-phase component. The quadrature (out-of-phase) component is

obtained by balancing the remaining signal by using a known signal from the other coil.

The accuracy of the reading is +1% resolution. Readings of both in-phase and out-of-phase were taken at 25m intervals along the lines for a total of 210 stations covering 6.5 kms.

A plan map (FIG. 4 at a scale of 1:2,000) of the VLF-EM survey is included in the rear cover of this report. The profiles are plotted at 1" = 30% . Crossover points are labelled for reference.

DISCUSSION OF RESULTS

With the exception of the northwestern and western margin, claim 1150701 is largely covered by overburden, predominantly glacial sand. Based on the observation of relatively plentiful outcrop in the above mentioned quadrant, the claim is underlain by relatively undeformed granite and related felsic intrusions. To the west at Granite Lake the granite is in fault contact with metavolcanics along the Michi-wakenda Lake Fault. Mafic metavolcanics were observed east of the claim and may be inclusions in the batholith, or in fault somehow related to effects of granite intrusion. The granitic rocks vary from fresh and massive in appearance to weakly foliated and lineated.

The 1993 prospecting and sampling on claim 1150697 verified the results of the previous year with respect to geological boundaries, but failed to return higher gold values from selected samples. Two of the seven samples exceeded 100 ppb gold, but overall results were somewhat disappointing.

Geophysics on claim 1150701 in Fawcett Township indicates a relatively weak response to both magnetic and VLF-EM surveys. The magnetic survey outlines a circular feature of relatively gentle gradient on the east claim boundary in the southeast quadrant. The remaining portion of the claim indicates fairly uniform magnetic relief which is supported by the granite observed. An eastern contact of the granite with volcanics was not observed due to widespread glacial sand, however the weak magnetic high may represent an amphibole-rich phase of the granite, a mafic volcanic inclusion in the batholith, a gabbroic intrusion, or more significantly, a kimberlite plug related to structural features associated with major

intrusive contacts.

With a view to diamond exploration currently being carried out to the east near Kirkland Lake, the possible presence of kimberlite in the area is significant.

VLF-EM surveying of claim 1150701 identified 3 conductive features (labelled A to C). A few other isolated crossovers are probably effects of contrasts in overburden depth, clay content, or indicates the edge of swamp. Conductors appear to be caused by shear zones related to the nearby Michiwakenda Lake Fault. Conductor A appears to be a one line response that may represent a shear running sub-parallel to the grid lines and because the lines are relatively short, is not detected on neighboring lines.

Crossovers B and C likely represent a two line conductor with axis trending northwesterly. This feature is not likely a stratigraphic contact and therefore probably a shear coinciding with the topographic low beneath the bay of Granite Lake. Also the west end of the magnetic feature on FIG. 5 has an approximate coincidence with this conductive feature. Based on the shoulder effect of the profiles, the conductive feature appears to dip vertically.

Representative samples of outcrop were taken when any evidence of shearing or interesting mineralization was observed and sample descriptions and assay values are found in Appendices B and C. Gold values on claim 1150701 are somewhat encouraging, particularly in light of the recent discovery immediately west of Granite Lake near Papoose Creek.

14

CONCLUSIONS AND RECOMMENDATIONS

Magnetometer and VLF-EM surveying has identified roughly coincident features that may be related to structural deformation along a subsidiary break of the Michiwakenda Lake Fault. Single line crossover A may represent a second splay. Anomalous gold values over narrow shears, associated with weak sulphide mineralization, on claim 1150701 significantly enhances the prospects of what appears to be a large scale deformation zone.

As a follow-up to encouraging work in 1992 on claim 1150697, weak gold values returned from what was believed to be the most prospective section of the claim is somewhat disappointing. As a result, limited resources and increased activity in Fawcett township necessitated a concentration of efforts on claim 1150701.

The writer recommends additional VLF-EM surveying on claim 1150701 with new grid lines cut in a N-S direction to cross what appears to be interesting structure. Special attention should be given to the area immediately east of the bay on Granite Lake between 15+00S and 19+00S. More prospecting and recon mapping should be carried out with closely spaced traverses in the southeast quadrant of the claim to investigate for the possible presence of outcrop along a suspected southeast trending shear. Additional sampling of zones exhibiting shearing, alteration, sulphide mineralization or quartz veining is warranted. Overburden sampling for indicator minerals down-ice from the weak magnetic high on the eastern claim boundary should be carried out to determine if the magnetic feature is caused by the presence of a kimberlite plug.

It is also recommended to acquire more land tying on to claim

1150701 on the west &/or the southeast. This will be accomplished as the opportunity arises.

If any or all of the above recommendations produces possitive results, diamond drilling of the most favourable targets would be the most logical follow-up phase.

Carrying out the bulk of the recommended work as a winter program would be the most efficient manner of circumventing the difficulties of working a claim bisected by a river.

Respectfully Submitted



Ray Garvey

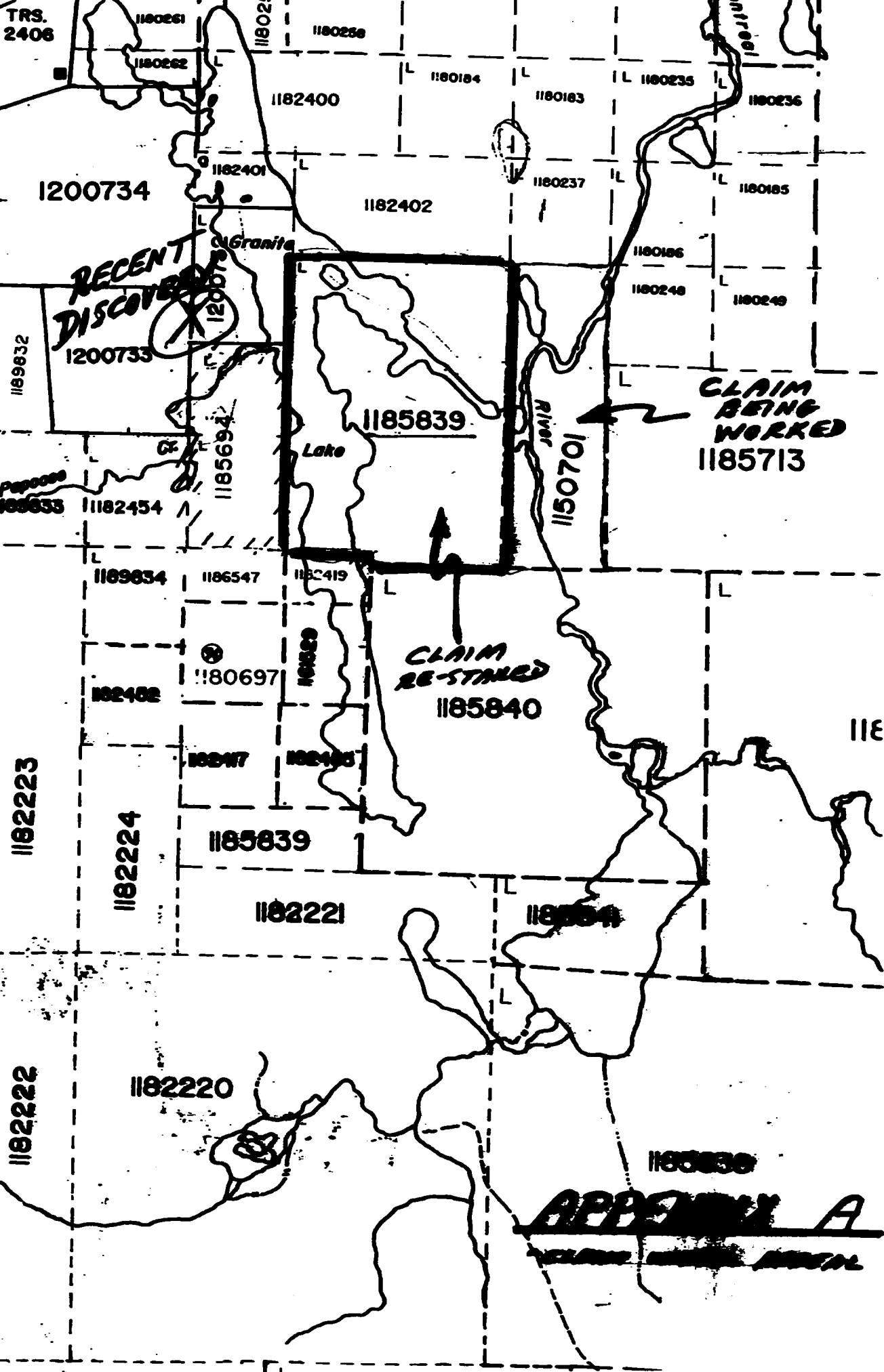
APPENDIX A

ASQUITH TOWNSHIP

5M

4M

3M



Magnetic Declination Used.

8° W

Scale:

1: 10,000

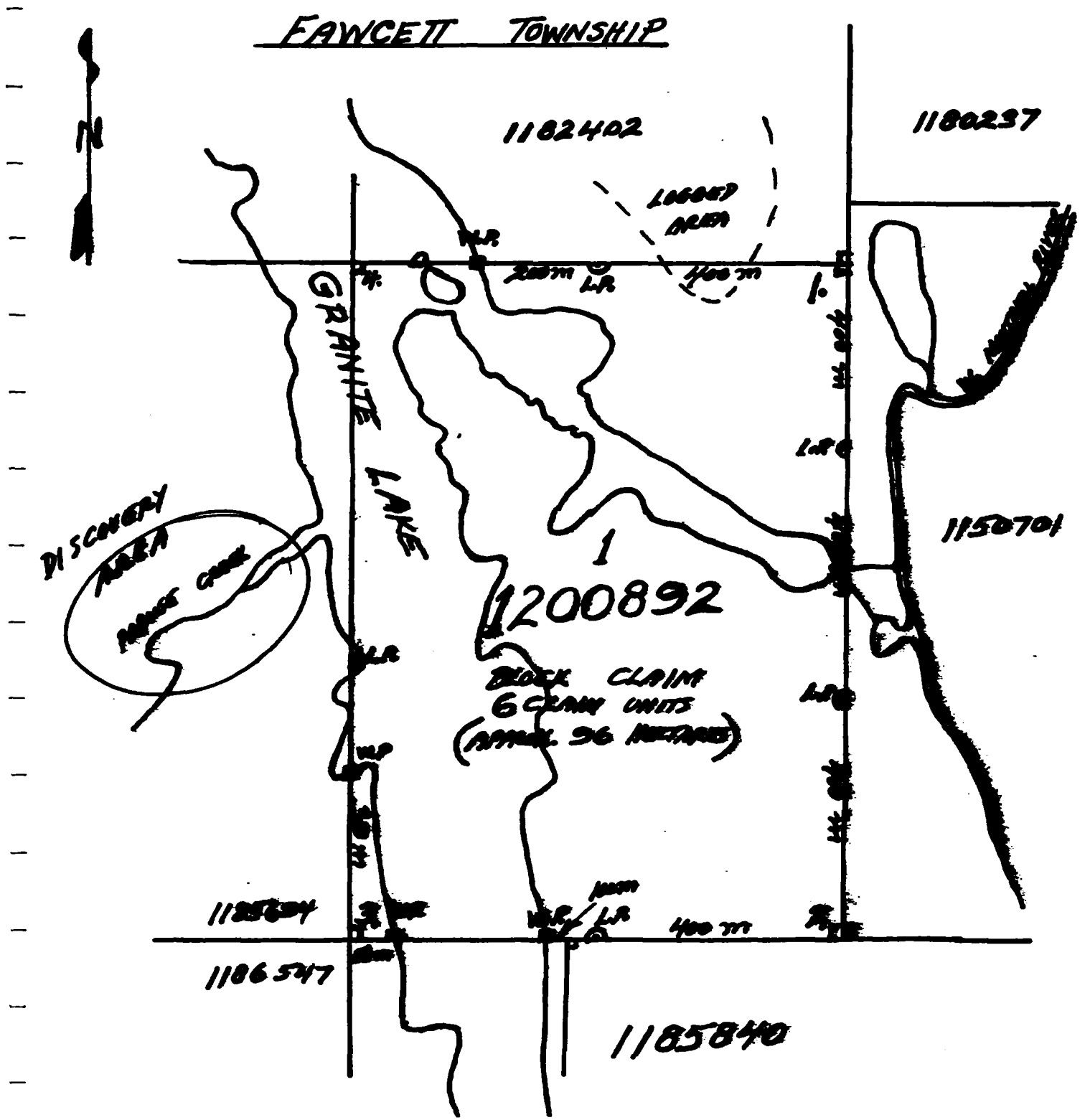
APPROX.

Group Sketch of claims listed on Part A.

Sketch or plan of the mining claim(s) must show the corner posts, witness posts, and ...e posts and the distances between the posts in metres.

Include topographic features such as lakes, rivers, creeks, ponds, etc. and developments such as hydro lines, highways, railways, pipelines, buildings, etc.

Refer to sample sketch on Part C.





Ontario

Ministry of
Northern Development
and Mines

Ministère du
Développement du Nord
et des Mines

Recording Office
4 Government Road East
KIRKLAND LAKE, Ontario
P2N 1A2

December 29, 1993

Our File: LMIL-24-8

Ray Garvey
108-16 The Links Road
WILLOWDALE, Ontario
M2P 1T5

Dear Sir:

**Subject: NOTICE OF APPEAL OF A DECISION OF THE MINING RECORDER IN THE
TOWNSHIP OF FAWCETT, LARDER LAKE MINING DIVISION**

Your appeal has been forwarded to the Mining and Lands
Commissioner on December 29, 1993 along with the documents that
you attached to this appeal.

Should you have any questions please call Larry Stoliker at
(705)567-9241.

Yours truly

Larry J. Stoliker
Acting Mining Recorder
Larder Lake Mining Division
Telephone 705 567-9241

/ljs
ENCLOSURES

CC. ~~John McDonald~~
Legal Services Branch

CC. ~~Mark Haff~~
Chief Recorder

Aird & Berlis
BCE Place
Suite 1800, Box 754
181 Bay Street
TORONTO, Ontario
M5J 2T9
ATTN: ~~Michael J. [unclear]~~



AIRD & BERLIS

Barristers and Solicitors

BCE Place
Suite 1800, Box 754
181 Bay Street
Toronto, Canada
M5J 2T9

Telephone: (416) 364-1241
Fax: (416) 364-4916
Telec: 06-22702

Michael J. Bourassa

Direct Line: (416) 865-3421

BY TELECOPIER and COURIER
(705) 567-5621

December 21, 1993

Mr. Larry Stoliker
Acting Mining Recorder
Larder Lake Mining Division
4 Government Road East
Kirkland Lake, Ontario
P2N 1A2

Dear Sirs:

Re : Ray Garvey — Notice of Appeal

Please find attached a Notice of Appeal which I am filing on behalf of Mr. Garvey pursuant to section 112 of the *Mining Act*.

Yours very truly,

Michael J. Bourassa

MJB:shf

Attachment

cc : Mr. Ray Garvey ✓
Mr. Mark Hall, Chief Mining Recorder (Fax: 705/670-5863)
Mining and Land Commissioner (Fax: 416/314-2327)

NOTICE OF APPEAL

Appellant Ray Garvey		Telephone (416) 223-2052
Address - Street number and name 108 - 16 The Links Road		
City, Town or Village Willowdale	Province Ontario	Postal Code M2P 1T5

Appellant's address for service in Ontario:

Address - Street number and name		
City, Town or Village	Province	Postal Code

Appellant's lawyer or agent (if any) Michael J. Bourassa, c/o Aird & Berlis		Telephone (416) 865-3421
Address - Street number and name BCE Place, Suite 1800, Box 754, 181 Bay Street		
City, Town or Village Toronto	Province Ontario	Postal Code M5J 2T9

Specify the mining division of the mining recorder being appealed:
Larder Lake

Specify the matter being appealed:

Decision of the mining recorder in a letter dated December 9, 1993 (received by appellant on December 15, 1993) wherein recorder refused to record mining claim 1200892.

(complete if applicable)

Date the decision was recorded:

Date the act was done or refused to be done: December 9, 1993

State briefly the reasons for the appeal:

The abstract of record indicated that mining claim 1185839 was forfeited as of 4:30 p.m. December 6, 1993 and therefore open for staking as of 7:00 a.m. on December 7, 1993.. The appellant is seeking (a) an order to record mining claim 1200892 and to cancel mining claim 1185839, or, in the alternative, and only if unsuccessful in obtaining the foregoing order, (b) an order for compensation from the Ministry of Northern Development and Mines for out-of-pocket costs.

Dec 21/93
Date signed

Ray Garvey
Signature

In the matter of the Mining Act
Before the Mining Recorder

DOCUMENT NO.
D9380-00151

IN THE MATTER OF: Mining claim L 1185839 located in the Township of Fawcett in the Larder Lake Mining Division, hereinafter referred to as the mining claim,

AND IN THE MATTER OF: An application and fees submitted in respect of the mining claim under section 73 (1) of the Mining Act by or on behalf of the recorded holder.

UPON THE APPLICATION: Of or on behalf of the holder of the mining claim for an extension of time in which to comply with the requirements of the Mining Act and upon reading the material filed,

WHEREAS: There is no adverse interest reported to me at this time.

I ORDER: The time for performance of deficiency of work on the Mining Claim, and filing due proof thereof, be and the same is hereby extended until and including the 8th day of June 1994.



Martin Cuda
Mining Recorder
Larder Lake Mining Division

DATED AT KIRKLAND LAKE THIS 29th DAY OF November, 1993.

cc Chief Mining Recorder, Mining Lands
Mark Hall



Ontario

Mining and Lands
Commissioner

Commissaire aux mines et
aux terres

Box 330
24th Floor
700 Bay Street
Toronto, Ontario
M5G 1Z6

C.P. 330
700, rue Bay
24^e étage
Toronto (Ontario)
M5G 1Z6

416/314-2320
Telecopier: 416/314-2327

416/314-2320
Télécopieur : 416/314-2327

REFER OUR FILE # MA 043-93

January 4, 1994

REGISTERED MAIL

Messrs. Aird & Berlis
BCE Place, Suite 1800
Box 754, 181 Bay Street
Toronto, Ontario
M5J 2T9

Attention: M. Bourassa

Minister of Northern Development
and Mines
Legal Services Branch
10th Flr., 77 Grenville, S. 1100
Toronto, Ontario
M5S 1B3

Attention: J. Norwood

Dear Sirs:

Re: Ray Garvey v. Minister of Northern Development and Mines

This is to acknowledge the receipt of your appeal in the above-noted matter.

Enclosed please find the Commissioner's Order.

If you have any questions, contact me at (416) 314-2324.

Yours very truly,

Mr. Daniel E. Pascoe
Registrar

DEP:so
Encl.



Box 330
C.P. 330
24th floor, 700 Bay Street
24^e étage, 700, rue Bay
Toronto, Ontario
Toronto (Ontario)
MSG 128

The Mining and Lands Commissioner Le Commissaire aux mines et aux terres

Appeal No. MA 043-93

L. Kamerman)
Mining and Lands Commissioner)

Tuesday, the 4th day
of January, 1994.

THE MINING ACT

IN THE MATTER OF

Mining Claim L-1185839, situate in the Township of Fawcett, in the Larder Lake Mining Division, hereinafter referred to as the "Mining Claim";

AND IN THE MATTER OF

An appeal of the Mining Recorder's Decision for the Larder Lake Mining Division of an application and fees submitted in respect of the Mining Claim under section 73(1) of the Mining Act to record Mining Claim L-1200892 and to cancel Mining Claim L-1185839;

BETWEEN:

RAY GARVEY

Appellant

- and -

MINISTER OF NORTHERN DEVELOPMENT AND MINES

Respondent

ORDER TO FILE

UNDER the power vested in this tribunal under clauses 116(1)(b) and (g) of the Mining Act, R.S.O. 1990, c. M. 14;

AND PURSUANT TO an appeal received by this tribunal on the 22nd day of December, 1993.

1. THIS TRIBUNAL ORDERS that the appellant file two copies with
..... 2

the tribunal and serve on the respondent no later than the 11th day of February, 1994, all documentation, evidence and things to be relied upon in the hearing of the appeal and notwithstanding the generality of the foregoing, a summary of the facts alleged, a list of both expert and lay witnesses along with a summary of their evidence, *curricula vitae* of expert witnesses, correspondence, maps, photographs, copies of reports of experts or consultants to be relied upon along with all documentation used in the preparation of such reports, such as field notes, computer program print outs, excerpts from textbooks or journals, maps, photographs or any other material or thing to be relied upon.

2. **THIS TRIBUNAL FURTHER ORDERS** that the respondent file two copies with the tribunal and serve on the appellant no later than the 11th day of March, 1994, all documentation, evidence and things to be relied upon in the hearing of the appeal and notwithstanding the generality of the foregoing, the facts that the respondent admits, the facts that the respondent denies and any other facts that the respondent alleges, a list of both expert and lay witnesses along with a summary of their evidence, *curricula vitae* of expert witnesses, correspondence, maps, photographs, copies of reports of experts or consultants to be relied upon along with all documentation used in the preparation of such reports, such as field notes, computer program print outs, excerpts from textbooks or journals, maps, photographs or any other material or thing to be relied upon.

AND TAKE NOTICE that the tribunal may upon its own initiative or upon request by either party to these proceedings determine that a pre-hearing conference, to be held either in person or by telephone conference call, would be beneficial for any reason set out on the attached Schedule to this order, and where the tribunal determines that a pre-hearing conference will be held prior to the dates for filing set out above, the tribunal will notify the parties and the order to file documents will be placed in abeyance pending completion of the pre-hearing conference.

DATED this 4th day of January, 1994.



L. Kamerman
MINING AND LANDS COMMISSIONER

APPENDIX B

APPENDIX B

DESCRIPTION OF ROCK SAMPLES

M^{rs} MURPHY TOWNSHIP

<u>SAMPLE NUMBER</u>	<u>ppb GOLD</u>	<u>DESCRIPTION</u>
2252	800	- FG, ALMOST ADHANTIC, INTERMEDIATE TO FELSIC, CHERTY VOLCANICS.
2255	60	- SHEARED, FELSIC VOLCANICS WITH MINOR Q.Y.'S.
2256	< 5	- WEAKLY SILICIFIED, WEAKLY SHEARED, INTERMEDIATE VOLCANICS.
2259	20	- M.B., MASSIVE, INTERMEDIATE VOLCANICS WITH MINOR GLAZED STROMBOLITE.
2260	30	- NARROW QUARTZ STROMBOLITE IN WEAKLY BANNED IRON MINERALIZATION AREA BY G.A.
2262	180	- INTERMEDIATE, OR ADHANTIC VOLCANICS WITH DISCONTINUOUS QUARTZ STROMBOLITE.
2263	10	- CHERTY VOLCANICS WITH MINOR SERICITE ALTERATION.

FAWCET TOWNSHIP

<u>SAMPLE NUMBER</u>	<u>ppb GOLD</u>	<u>DESCRIPTION</u>
2251	550	- M.B., MASSIVE, INTERMEDIATE VOLCANICS WITH MINOR Q.Y.'S.
2253	1630	- M.B., GRANITE WITH MINOR Q.Y.'S.
2254	2180	- G.A., PORPHYRY, QUARTZ, MINOR Q.Y.'S.
2257	2800	- MASSIVE, M.B., GRANITE WITH MINOR Q.Y.'S.
2258	1730	- SHEARED PORPHYRY MINERALIZATION WITH MINOR Q.Y.'S.

APPENDIX C

Chemex Labs Ltd.

Analytical Chemists * Geochemists * Registered Assayers
 5175 Timberlea Blvd., Mississauga,
 Ontario, Canada
 PHONE: 416-624-2806

To: GARVEY, RAY
 108 - 26 THE LINKS RD.
 WILLOWDALE, ON
 M2P 1T6

Project :
 Comments :

CERTIFICATE OF ANALYSIS A9410223

SAMPLE	PREP CODE	Air Pb Pb FA+M											
002251	205 226	560	FAW										
002252	205 226	800	MAC										
002253	205 226	1630	FAW										
002254	205 226	2180	FAW										
002255	205 226	60	MAC										
002256	205 226	< 5	MAC										
002257	205 226	2860	FAW										
002258	205 226	1730	FAW										
002259	205 226	20	MAC										
002260	205 226	30	MAC										
002261	205 226	4880	STRATON										
002262	205 226	180	MAC										
002263	205 226	10	MAC										
<p style="text-align: center;">7 Macmillan ch 5 Fawcett 1 Stratton</p>													
<p style="font-size: 2em; font-weight: bold;">APPENDIX C</p>													

Chemex Labs Ltd.

Analytical Chemists * Geochemists * Registered Assayers
 5176 Timberlea Blvd., Mississauga,
 Ontario, Canada L4W 2S3
 PHONE: 416-624-2606

To: GARVEY, RAY
 108 - 28 THE LINKS RD.
 WILLOWDALE, ON
 M2P 1T6

A9410223

Comments:

CERTIFICATE **A9410223**

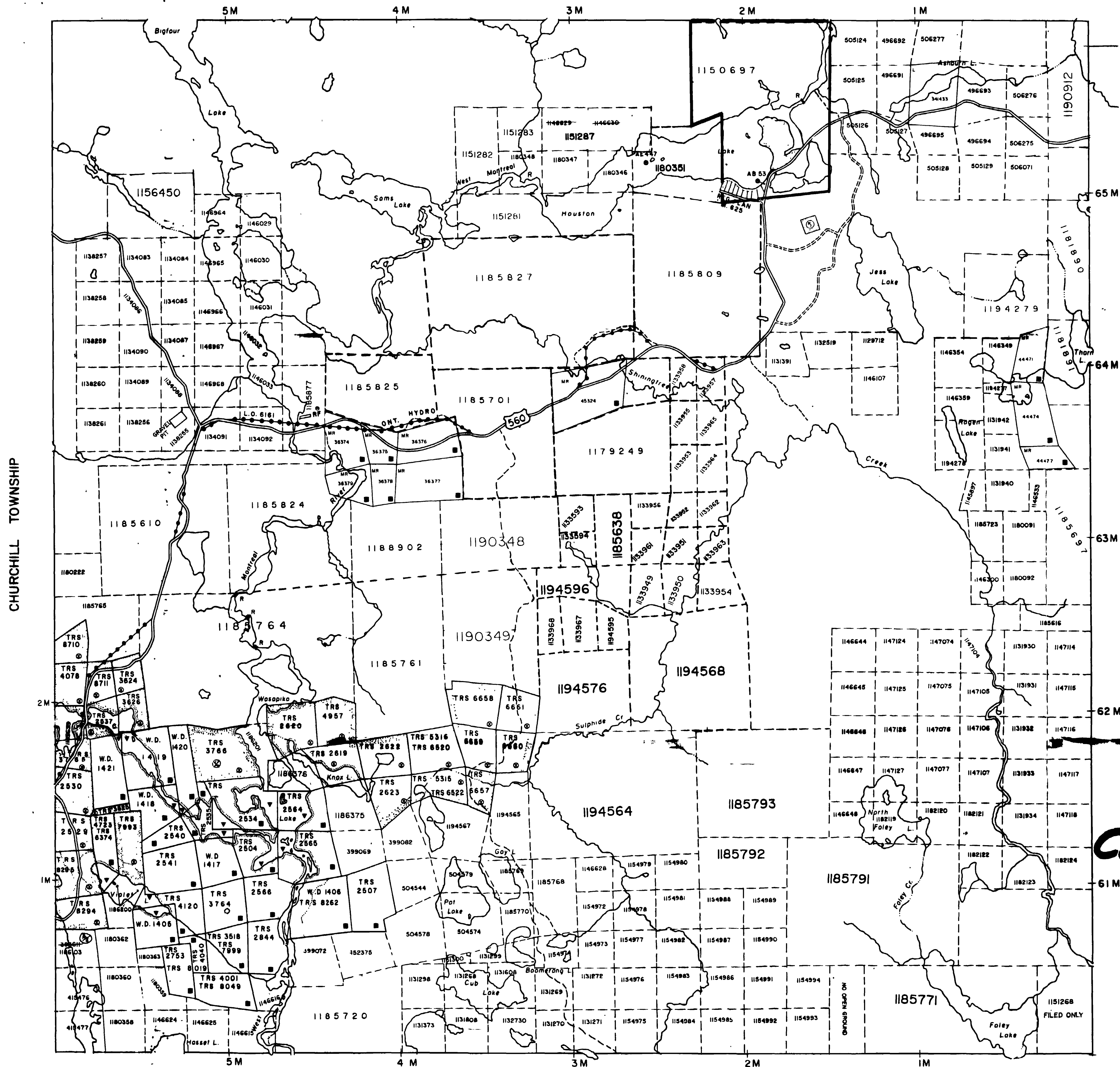
GARVEY, RAY

Project:
 P.O. #:

SAMPLE PREPARATION	
CHEMEX CODE	DESCRIPTION
205	Geochem ring to approx 150 mesh 0-5 lb crush and split
226	

ANALYTICAL PROCEDURES					
CHEMEX CODE	NUMBER SAMPLES	DESCRIPTION	METHOD	DETECTION LIMIT	UPPER LIMIT
100	13	Au Ppb: Fuse 10 g sample	FA-AAS	5	10000

NATAL TOWNSHIP



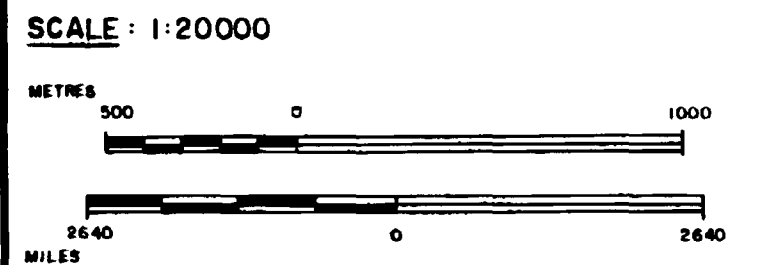
LEGEND

HIGHWAY AND ROUTE No	
OTHER ROADS	
TRAILS	
SURVEYED LINES	
TOWNSHIPS, BASE LINES, ETC	
LOTS, MINING CLAIMS, PARCELS, ETC	
UNSURVEYED LINES	
LOT LINES	
PARCEL BOUNDARY	
MINING CLAIMS ETC	
RAILWAY AND RIGHT OF WAY	
UTILITY LINES	
NON-PERENNIAL STREAM	
FLOODING OR FLOODING RIGHTS	
SUBDIVISION OR COMPOSITE PLAN	
RESERVATIONS	
ORIGINAL SHORELINE	
MARSH OR MUSKEG	
MINES	
TRAVERSE MONUMENT	

DISPOSITION OF CROWN LANDS

TYPE OF DOCUMENT	SYMBOL
PATENT, SURFACE & MINING RIGHTS	
" SURFACE RIGHTS ONLY	
" MINING RIGHTS ONLY	
LEASE, SURFACE & MINING RIGHTS	
" SURFACE RIGHTS ONLY	
" MINING RIGHTS ONLY	
LICENCE OF OCCUPATION	
ORDER-IN-COUNCIL	
RESERVATION	
CANCELLED	
SAND & GRAVEL	

400 SURFACE RIGHTS RESERVATION ALONG THE SHORES OF ALL LAKES AND RIVERS



NOTES

MINING LEASES SHOWN, THUS HAVE BEEN TERMINATED BUT NOT THROWN OPEN TO STAKING

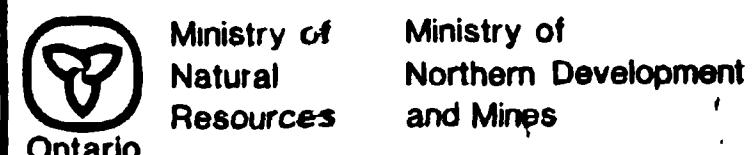
TWP OPENED TO STAKING - ORDER MLOI-90 EFFECTIVE APRIL 3/93 AT 7:00 AM EST

GEOLOGY REFERENCE - COBALT RESIDENT GEOLOGIST

DATE OF ISSUE
JAN 19 1993
LARDER LAKE
MINING RECORDER'S OFFICE

CLAIM MAP A

TOWNSHIP
MACMURCHY
M.N.R. ADMINISTRATIVE DISTRICT
GOGAMA
MINING DIVISION
LARDER LAKE
LAND TITLES / REGISTRY DIVISION
SUDBURY



Date APRIL 1990
Number **G-988**

CHURCHILL TOWNSHIP

TYRELL TOWNSHIP

FAWCETT TOWNSHIP



MACMURCHY TOWNSHIP

GEOLOGY REFERENCE-COBALT
RESIDENT GEO.

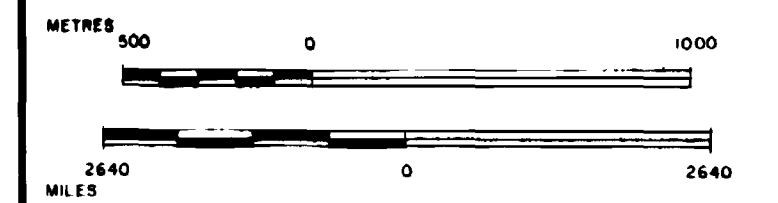
LEGEND

- HIGHWAY AND ROUTE No
- OTHER ROADS
- TRAILS
- SURVEYED LINES
- TOWNSHIPS, BASE LINES, ETC
- LOTS, MINING CLAIMS, PARCELS, ETC
- UNSURVEYED LINES
- LOT LINES
- PARCEL BOUNDARY
- MINING CLAIMS ETC
- RAILWAY AND RIGHT OF WAY
- UTILITY LINES
- NON-PERENNIAL STREAM
- FLOODING OR FLOODING RIGHTS
- SUBDIVISION OR COMPOSITE PLAN
- RESERVATIONS
- ORIGINAL SHORELINE
- MARSH OR MUSKEG
- MINES
- TRAVERSE MONUMENT

DISPOSITION OF CROWN LANDS

TYPE OF DOCUMENT	SYMBOL
PATENT, SURFACE & MINING RIGHTS	○
SURFACE RIGHTS ONLY	○
MINING RIGHTS ONLY	○
LEASE, SURFACE & MINING RIGHTS	□
SURFACE RIGHTS ONLY	□
MINING RIGHTS ONLY	□
LICENCE OF OCCUPATION	○
ORDER-IN-COUNCIL	○
RESERVATION	○
CANCELLED	○
SAND & GRAVEL	○

SCALE 1:20000



400' RESERVATION AROUND ALL LAKES AND RIVERS

DATE OF ISSUE

JAN 10 1993

LARDER LAKE
MINING RECORDER'S OFFICE

CLAIM MAP B

TOWNSHIP
FAWCETT
M.N.R. ADMINISTRATIVE DISTRICT
GOGAMA
MINING DIVISION
LARDER LAKE
LAND TITLES / REGISTRY DIVISION
SUDBURY

Ministry of Natural Resources Ontario
Ministry of Northern Development and Mines

Date JAN 8 1991

Number

G-971

ASQUITH TOWNSHIP

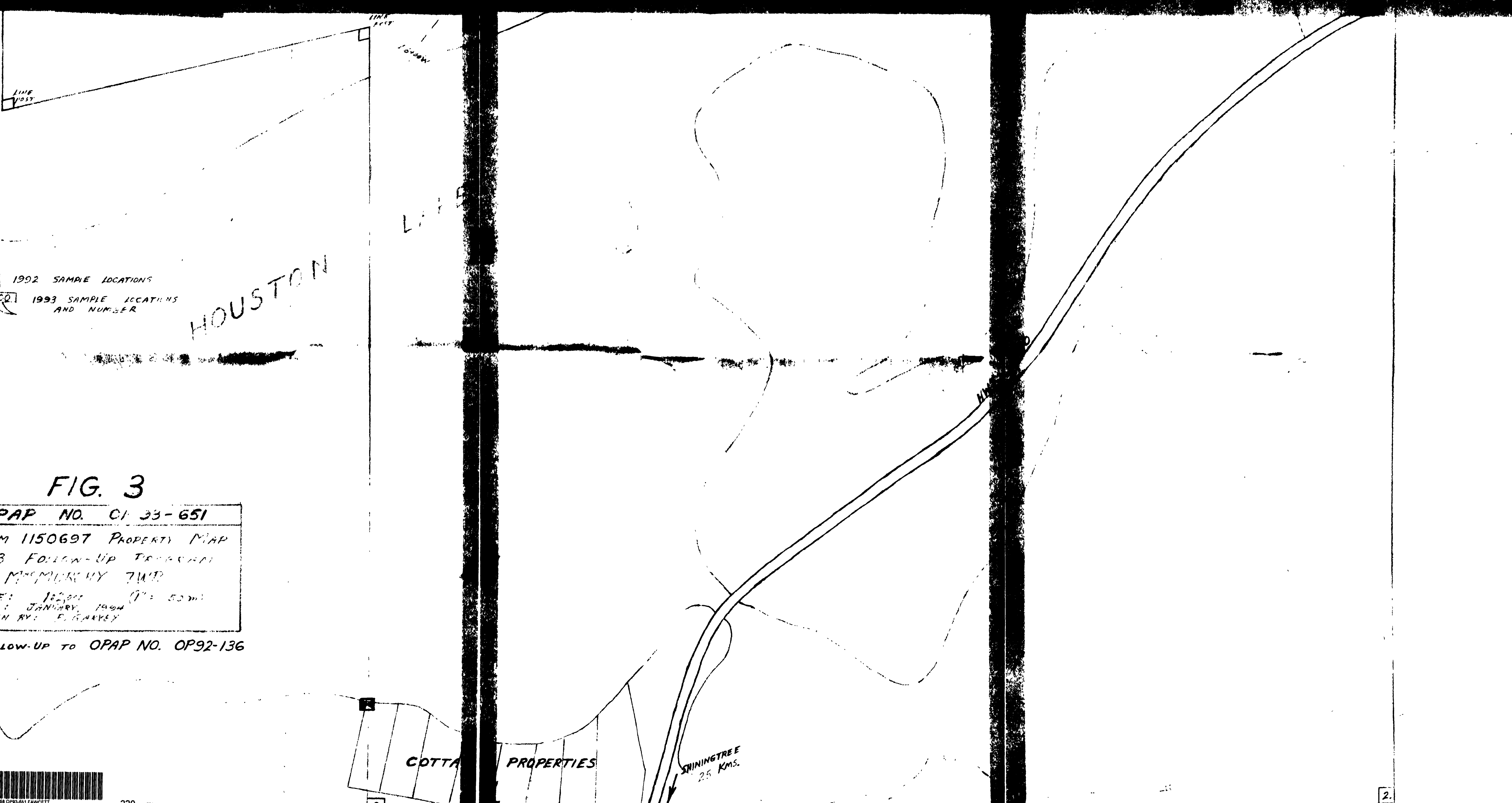
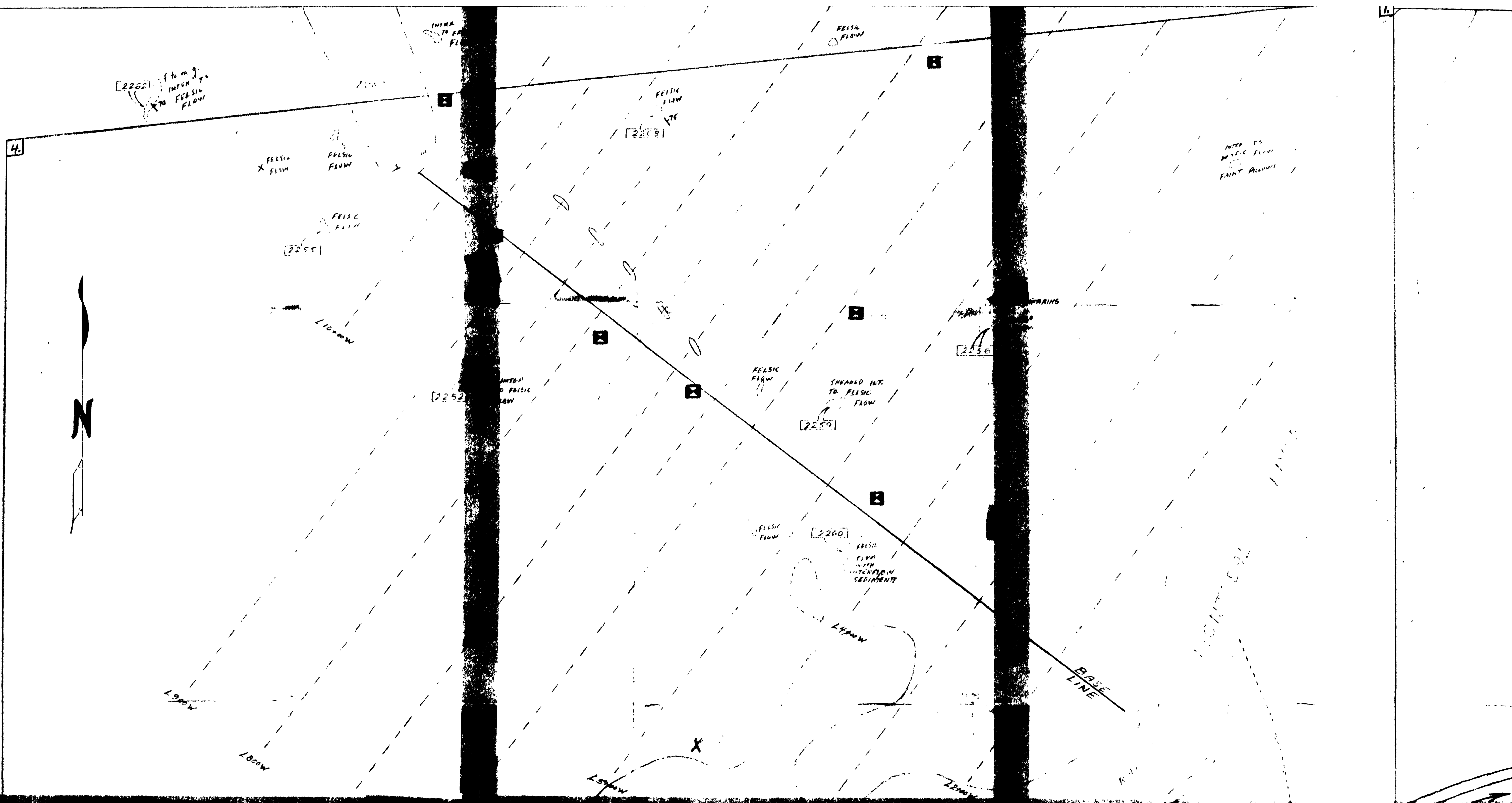
LEONARD TOWNSHIP

OGILVIE TOWNSHIP

COPY OF THIS MYLAR
ARCHIVED OCT. 25, 1991
COPY OF THIS MYLAR
ARCHIVED NOV 29/91

CIRCULATED JAN. 8, 1991
COPY OF THIS MYLAR
ARCHIVED SEPT 23, 1991





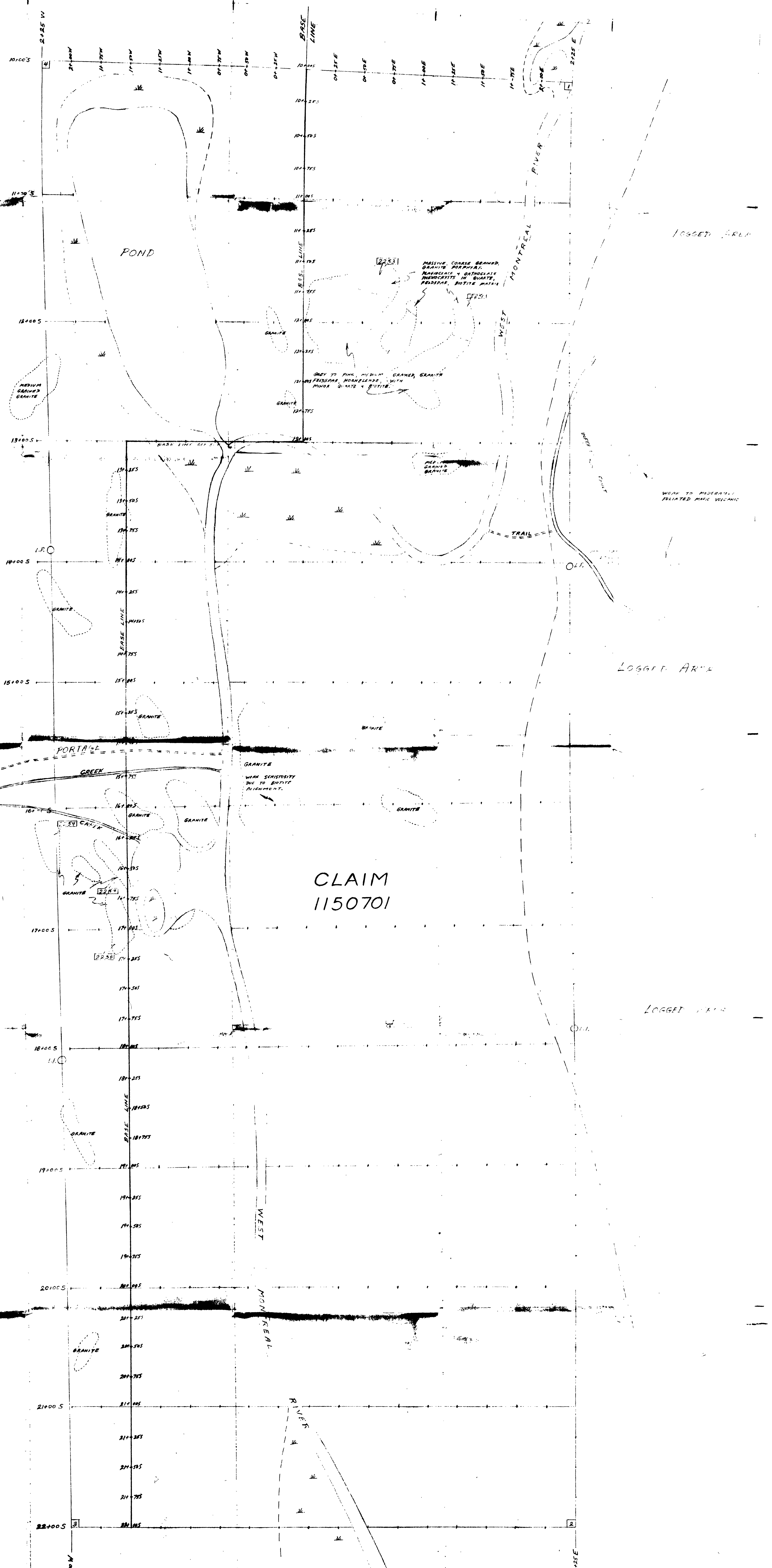
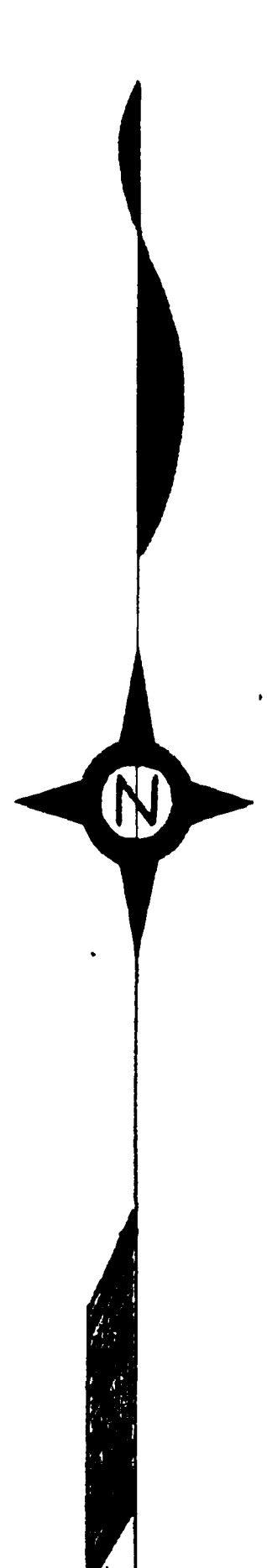
[2251] 1992 SAMPLE LOCATIONS
 [2260] 1993 SAMPLE LOCATIONS AND NUMBER

FIG. 3

OPAP NO. CI 33-651
 CLAIM 1150697 PROPERTY MAP
 1993 FOLLOW-UP TO OPAP
 MEMPHIS TWP
 SCALE: 1:50,000 (1" = 500M)
 DATE: JANUARY 1994
 DRAWN BY: P. HARVEY

FOLLOW-UP TO OPAP NO. OP92-136





GRANITE

LAKE

PORTAGE

CREEK

PORTAGE CREEK

CLAIM 1150701

2258 SAMPLE LOCATION AND NUMBER.



230

FIG. 3a.

OPAP NO. OP93-651
Follow-Up to OPAP NO. OP92-136
CLAIM 1150701

PROSPECTING, RECON
MAPPING & SAMPLING
FRANCET TWP., SHIMMERTREE AREA

SCALE: 1" = 25m
DATE: JAN, 1994
DRAWN BY: S. GARDNER

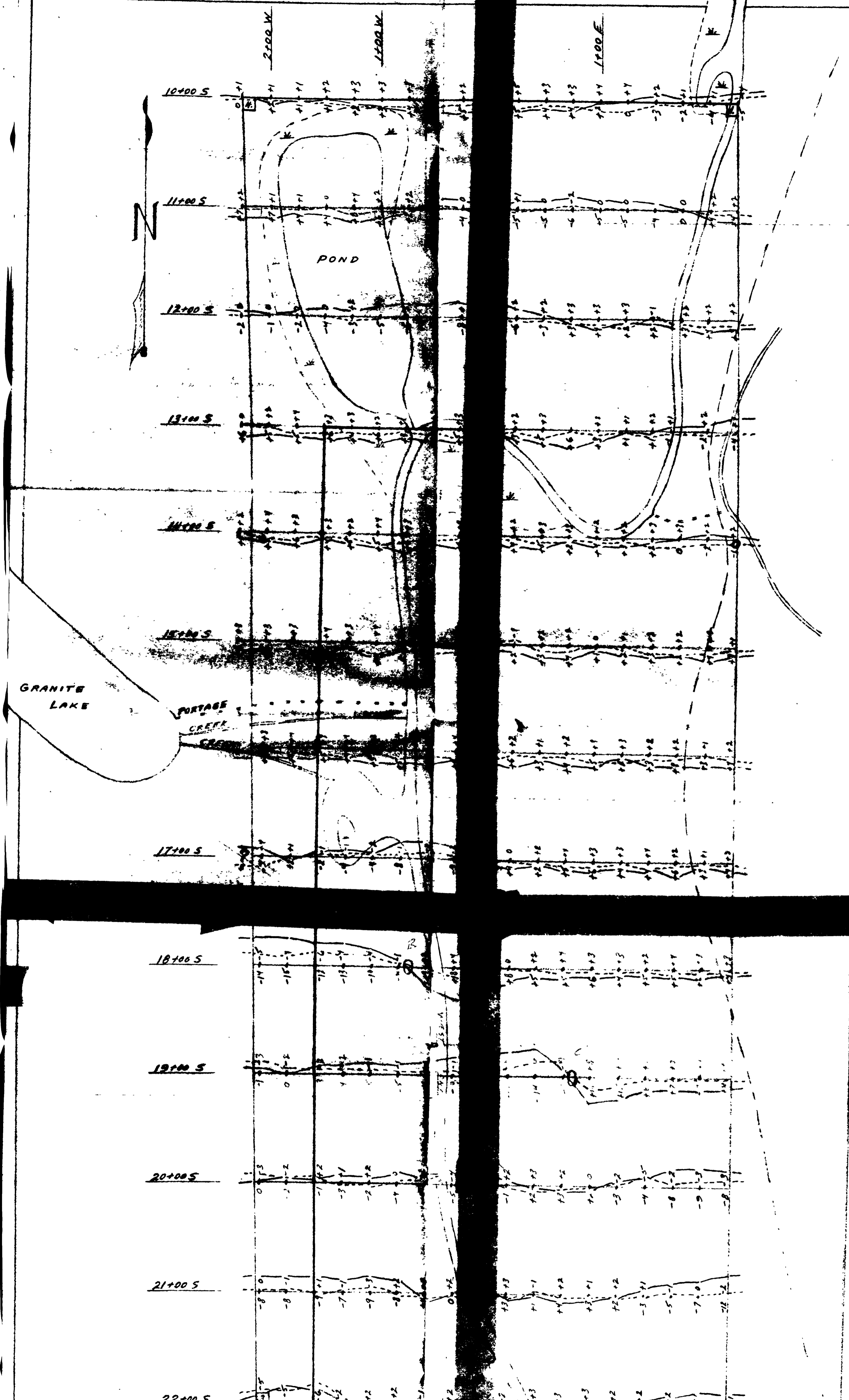


FIG. 4

FAWCETT TWP.

OPAP NO. 0192-651

FOLLOW-UP TO CASE NO. 1150751

CLAIM 1150751

VLF-EM SURVEY

- GEONICS VLF-EM SYSTEM
 - SCALE 1" = 30'

SHEET 1" = 30'
 DATE: JAN 12 4
 DRAWN BY: R. GARVEY



240

41PTN008 0P93 851 FAWCETT

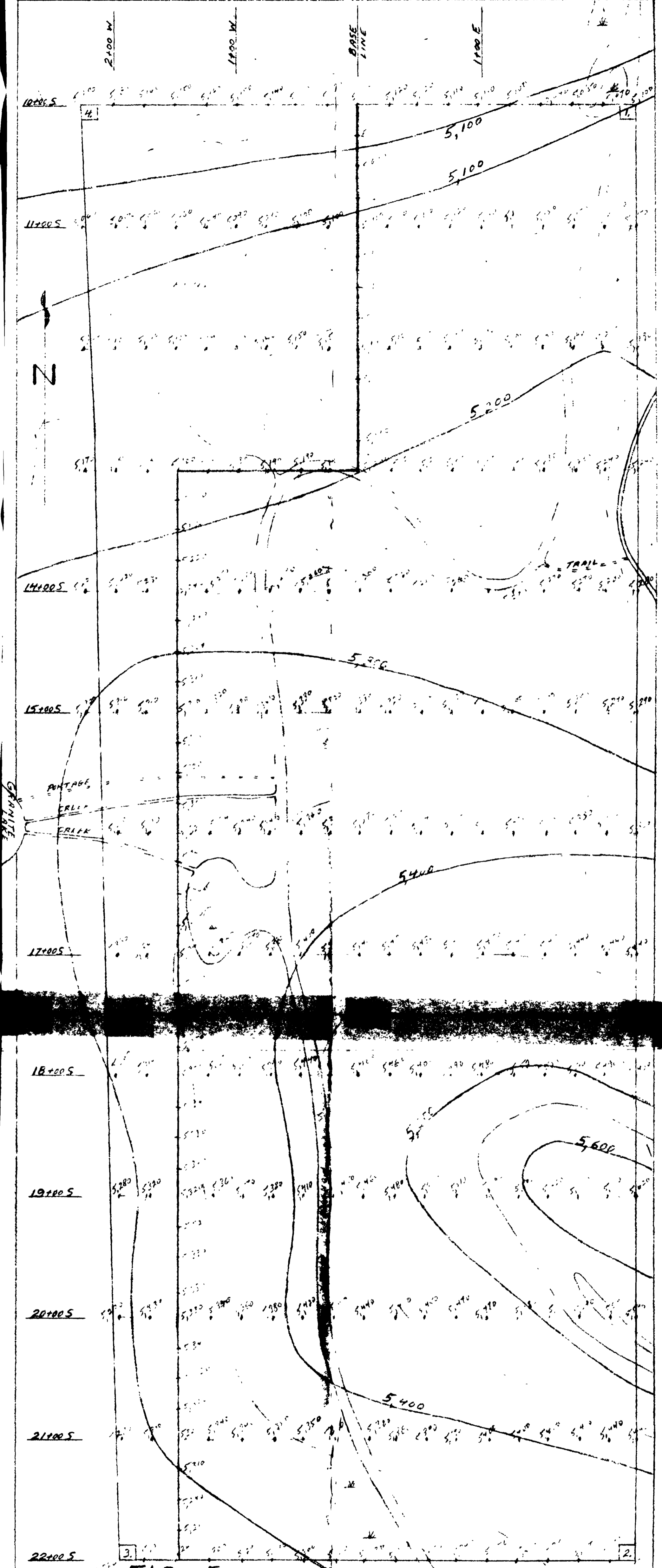


FIG. 5

FAWCETT TWP.

OPAP NO. 01-1-10-1

FOLLOW UP T. OF T. NO. 01-1-10-1

CLAIM 1150701

MAGNETIC SURVEY

- RELATIVE VALUES OF VERTICAL COMPONENT (IN GAMMAS)
- M'PHAR M' 2-100 FIELD MAGNETOMETER.

SCALE: 1" = 50 M (1:50,000)

C. M. H. A. INTERVAL - 50





1150/3SW
1151/2NE
1152SW
1153NE
1154SW
1155SW
1156/3NE
1157SW
1158SW
1159S
1160NE
1161/2SW
1162/2NE
1163/2NE
1164SW
1165NE
1165SW
1166/67NE
1168SW
1169SW
1170SW
1171NE
1172SW
1173NE
1174SW
1175NE

CLAIM
1150701



41P11NE0058 OP93-651 FAWCETT

AIRBORNE E.M. + MAG.
FAWCETT TOWNSHIP