



41P11NE0459 11 MACMURCHY

010

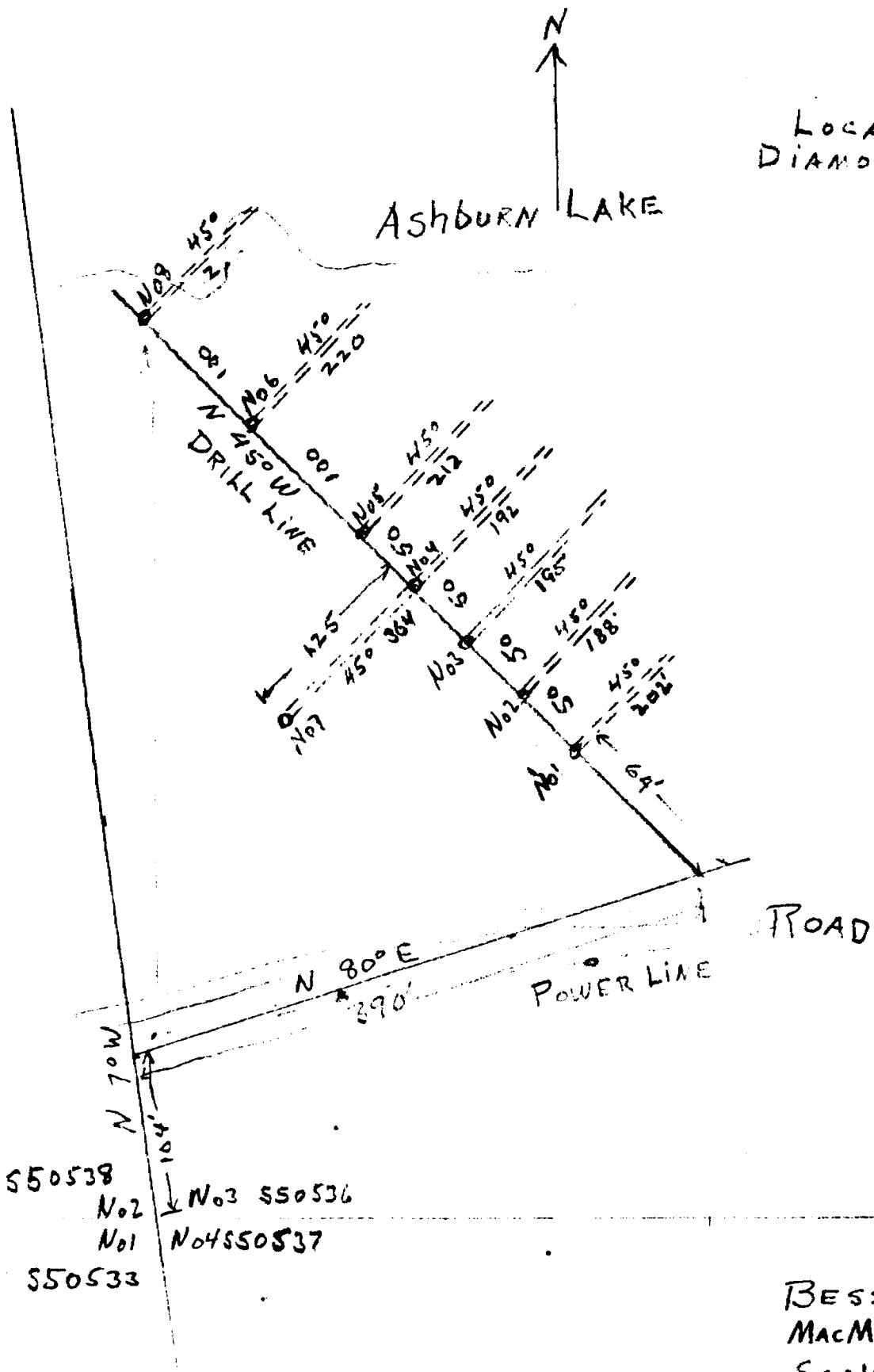
MACMURCHY TOWNSHIP REPORT #11

This file contains work performed by Bessey Mines on claims:

		<u>Feet</u>	
S.50536	Hole #B1;	202	August, 1952
	Hole #B2;	188	August, 1952
	Hole #B3;	195	August, 1952
	Hole #B4;	192	August, 1952
	Hole #B5;	212	September, 1952
	Hole #B6;	220	September, 1952
	Hole #B7;	364	September, 1952
	Hole #B8;	266	October, 1952
S.50538	Hole #13;	960	March, 1953
		9	2799

LOCATION
DIAMOND DRILL HOLES.

ASHBURN LAKE



BESSEY MINES LTD
MACMURCHY TWP
SCALE 1" = 100'
R. HURD.

A CORE L.

PROPERTY BESSEY MINES LTD 7-8-27
DIAMOND DRILL RECORD

HOLE NUMBER B1
 SHEET NUMBER 1
 SECTION FROM 0 TO 75

LOCATION: LAT _____ DEP _____
 ELEVATION OF COLLAR _____
 DATUM _____
 DIRECTION AT START: BEARING N 45° E
 DIP 45°

STARTED Aug 6, 1952
 COMPLETED Aug 11, 1952
 ULTIMATE DEPTH 202
 PROPOSED DEPTH 200

DEPTH FEET	FORMATION	SAMPLE NO.	WIDTH OF SAMPLE	GOLD \$	SLUDGE GOLD \$
0-16.25	CASING				
16.25-20	CARBONATED GREENSTONE				
20-25	CARBONATED GREENSTONE NUMEROUS Quartz Fractures some PYRITE	B1	5'	Nil	
25-28	Silicified Carbonated Greenstone fair pyrite mineralization	B2	3'	TR	
28-30	Greenstone				
30-35	Silicified Greenstone				
35-40	"				
40-45	Silicified Greenstone altered and mineralized some Quartz	B.3	5'	TR	
45-50	Carbonated Greenstone numerous Quartz stringers				
50-53	Silicified Greenstone Quartz stringer fair pyrite mineralization 49.5-53	B4	35'	Nil	
53-61	Greenstone				
61-64.2	Silicified Greenstone numerous Quartz fractures mineralized	B5	3.2'	.09	3.15
64.2-66	Greenstone				
66-70	Silicified Greenstone ^{quartz fracture} mineralized	B6	4'	.05	1.75
70-75	with Quartz fracture				

NORTHERN MINER PRESS LIMITED, TORONTO-STOCK FORM NO. 501 REV. 9/44

DRILLED BY J. Newman

SIGNED Ralph King

PROPERTY BESSEY MINES LTD

HOLE NUMBER B1

SHEET NUMBER 2

DIAMOND DRILL RECORD

SECTION FROM 75 TO 125

LOCATION: LAT. _____
 DEP. _____

ELEVATION OF COLLAR _____

DATUM _____

DIRECTION AT START: BEARING N 45° E
 DIP 45° N.E.

STARTED Aug 6, 1952

COMPLETED Aug 11, 1952

ULTIMATE DEPTH 202

PROPOSED DEPTH 200

DEPTH FEET	FORMATION	SAMPLE NO.	WIDTH OF SAMPLE	GOLD \$	SLUDGE GOLD \$		
75-80	Carbonated Greenstone Quartz fractures mineralized	B7	5'	TR			
80-85	Carbonated Greenstone Quartz fractures						
85-90	" " " "						
90-95	" " " "						
92.75-94	Lost Core Broken Ground						
95-100	Highly altered Carbonated Greenstone very numerous Quartz stringers mineralized	B8	5'	.145		5.07	
100-105	Carbonated Greenstone numerous Quartz stringers mineral	B36	5'	Nil			
105-110	Dark Silicious high silical end well mineralized	B9	5'	TR			
110-115	Very silicious high Quartz well mineralized	B10	5'	.01		35	
115-120	Very silicious well mineralized	B11	5'	.026		87	
120-125	Silicious Quartz stringers well mineralized	B12	5'	TR			

NORTHERN MINER PRESS LIMITED, TORONTO-STOCK FORM NO 501 REV. 9/44

DRILLED BY J. NEWMAN

SIGNED Ralph [Signature]

PROPERTY BESSEY MINES LTD

HOLE NUMBER B1

SHEET NUMBER 3

DIAMOND DRILL RECORD

SECTION FROM 125 TO 202

LOCATION: LAT. _____
 DEP. _____

ELEVATION OF COLLAR _____

DATUM _____

DIRECTION AT START: BEARING N 45° E
 DIP 45° N.E.

STARTED Aug 6, 1952

COMPLETED Aug 11, 1952

ULTIMATE DEPTH 202

PROPOSED DEPTH 200

DEPTH FEET	FORMATION	SAMPLE No.	WIDTH OF SAMPLE	GOLD \$	SLUDGE GOLD \$	
125-130	Very silicious numerous Quartz veins well mineralized	B13	5"	.02		70
130-135	Very silicious Quartz veins well mineralized	B14	5"	.04		140
135-140	Very silicious Quartz veins mineralized	B15	5"	.02		70
140-145	" " " " "	B16	5"	.01		35
145-150	" " " " "	B17	5"	.02		70
150-155	" " " " "	B18	5"	.09		315
155-170	Keewatin Greenstone 155-160	B35	5"	Nil		-
170-175	Fine Grained Diabase					
175-202	" " " " with numerous epidote stringers					

DRILLED BY J. Newman

SIGNED Ralph Hurd

PROPERTY BESSEY MINES LTD.

HOLE NUMBER B2

SHEET NUMBER 1

DIAMOND DRILL RECORD

SECTION FROM 0 TO 75

LOCATION: LAT. _____
 DEP. _____

STARTED Aug 12, 1952

ELEVATION OF COLLAR _____

COMPLETED _____

DATUM 50' NW of N.B.1

ULTIMATE DEPTH _____

DIRECTION AT START: BEARING N 45° E
 DIP 45°

PROPOSED DEPTH 200

DEPTH FEET	FORMATION	SAMPLE No.	WIDTH OF SAMPLE	GOLD \$	SLUDGE GOLD \$
0-9	Casing				
9-15	CARBONATED Greenstone some Quartz stringers				
15-20	Carbonated Greenstone Quartz stringers				
20-25	" " "				
	4" Quartz at 24 feet.				
25-30	Carbonated Greenstone Quartz stringers				
30-35	" " "				
35-40	" " numerous Quartz stringers some mineral Ground				
40-45	Carbonated Greenstone numerous Quartz stringers some mineral				
45-50	Brecciated Carbonated Greenstone numerous Quartz stringers mineral				
50-55	Brecciated Carbonated Greenstone 53-55 numerous Quartz stringers mineral	A 37	2	Nil	
55-60	Greenstone 3" Quartz at 59'	B 38	5	TR	
60-65	" some Quartz stringers	B 39	5	Nil	
65-70	" " " "				
70-75	" Quartz stringers some mineralisation pyrite.				

NORTHERN MINER PRESS LIMITED, TORONTO-STOCK FORM NO. 501 REV. 5-54

DRILLED BY J. Newman

SIGNED Ralphburg

PROPERTY BESSEY MINES LTD

HOLE NUMBER B2
 SHEET NUMBER 2
 SECTION FROM 75 TO 150

DIAMOND DRILL RECORD

LOCATION: LAT. _____ DEP. _____
 ELEVATION OF COLLAR _____
 DATUM 50' N.W. of Hole B1
 DIRECTION AT START: BEARING N 45° E
 DIP 45°

STARTED Aug 12, 1952
 COMPLETED _____
 ULTIMATE DEPTH _____
 PROPOSED DEPTH 200

DEPTH FEET	FORMATION	SAMPLE NO.	WIDTH OF SAMPLE	GOLD \$	SLUDGE GOLD \$
75-81	Greenstone Quartz fracture ^{77.5-81}	B 59	3.5		
81-83.5	Greenstone with numerous Quartz fractures mineralized	B 19	2.5	.13	4 15
83.5-85	Greenstone	B 60	1.5		
85-87	Quartz fractures well mineralized	B 20	2	.161	21 35
87-100	Greenstone some Quartz fractures	B 61	3		
100-112.0	" " " " ¹⁰⁵⁻¹¹²	B 62	7		
112.0-115	Vein Fracture Greenstone 50% Quartz mineralized	B 21	2.5	.17	5 95
115-120	Vein Fracture considerable Quartz mineralized	B 22	5	.09	3 15
120-125	Vein Fracture 35% Quartz mineralized	B 23	5	.10	3 50
125-130	" " 25% " "	B 24	5	.02	70
130-135	" " " "	B 25	5	.01	35
135-140	Mineralized Porphyry numerous Quartz fractures	B 26	5	.04	1 40
140-145	Quartz fractures mineralized	B 27	5	.01	35
145-150	mineralized Porphyry numerous Quartz fractures well silicified	B 28	5	.01	35

DRILLED BY

J. Newman

SIGNED

Raeputing

PROPERTY BESSEY MINES LTD.

HOLE NUMBER B 3

SHEET NUMBER 3

DIAMOND DRILL RECORD

SECTION FROM 150 TO 195

LOCATION: LAT. _____

DEP. _____

ELEVATION OF COLLAR _____

DATUM 50' N.W. of Hole B2

DIRECTION AT START: BEARING N 45° E

DIP 45°

STARTED Aug 22, 1952

COMPLETED Aug 24, 1952

ULTIMATE DEPTH 195

PROPOSED DEPTH 200

DEPTH FEET	FORMATION	SAMPLE No.	WIDTH OF SAMPLE	GOLD \$	SLUDGE GOLD \$	
150-155	Vein Fracture silicified Greylophyte mineralized Quartz fractures	B 53	5	.02		70
155-160	Vein Fracture silicified Greylophyte mineralized Quartz fractures	B 54	5	03		105
160-165	Vein Fracture silicified mineralized Quartz fractures	B 55	5	01		35
165-170	Vein Fracture silicified Greenstone Quartz fractures mineralized	B 56	5	Nil		
170-175	Brecciated Greenstone Quartz fractures mineralized	B 57	5	TR		
175-179	Brecciated Greenstone mineralized					
179-185	Brecciated Greenstone					
185-190	" "					
190-195	Keewatin					
	end of hole					
190-190-5	Wall mineralized (Red mineral)	B 58	1.5	TR		

NORTHERN MINER PRESS LIMITED, TORONTO—STOCK FORM NO. 501 REV. 9-44

DRILLED BY

J. Newman

SIGNED

Ralph Hurd

PROPERTY BESSEY MINES LTD

HOLE NUMBER Hole B4

SHEET NUMBER 1

SECTION FROM 0 TO 75

A CORE

DIAMOND DRILL RECORD

LOCATION: LAT. _____
 DEP. _____

STARTED Aug 25, 1952

ELEVATION OF COLLAR _____

COMPLETED Aug

DATUM 50' N.W. of Hole # B3

ULTIMATE DEPTH 192

DIRECTION AT START: BEARING N 45° E
 DIP 45°

PROPOSED DEPTH 200'

DEPTH FEET	FORMATION	SAMPLE NO.	WIDTH OF SAMPLE	GOLD \$	SLUDGE GOLD \$	
0-22	Casing					
22-25	Carbonated Greenstone 4" Quarts at 22'					
25-30	Carbonated Greenstone Quarts fractures ^{2" quarts 27 1/2}					
30-35	" " " "					
	2-6" Quarts fractures 32' to 34'	31-33	B 63	2.5	.025	87
35-40	Carbonated Greenstone numerous Quarts	B 64	5	TR		
40-45	" " " " 40-45	B 65	5	.01		35
45-50	" " " "					
50-55	Brecciated cemented Greenstone numerous Quarts fractures mineralized	B 66	5	.01		35
55-60	Brecciated cemented Greenstone numerous Quarts fractures mineralized	B 67	5	TR		
60-65	Carbonated Greenstone Quarts fracture					
65-70	Well silicified Carbonated Greenstone 25% Quarts mineralized	B 68	5	TR		
70-75	Silicified Carbonated Greenstone Quarts fractures					

DRILLED BY J. NEWMAN

SIGNED Ralph Aug

DIAMOND DRILL RECORD

PROPERTY BESSEY MINES LTD HOLE NO. 13
 SHEET NUMBER 3 SECTION FROM 598 TO 960 STARTED March 13, 1953
 LATITUDE _____ DATUM 450' N.W. of No 8 and 90' line COMPLETED April 1, 1953
 DEPARTURE _____ BEARING N 45° E ULTIMATE DEPTH 960'
 ELEVATION _____ DIP 450 PROPOSED DEPTH _____

DEPTH FEET	FORMATION	SAMPLE NO.	WIDTH OF SAMPLE	GOLD g	SLUDGE GOLD g
598-622	Rhyolite badly broken mud seams				
622-645	" more massive				
645-669	" "				
669-692	" Breccia	3			
692-716	Rhyolite				
716-789	" "				
789-814	" more carbonated.				
839-862.5	Green Carbonate				
862.5-888	" "				
888-893	" " Carbonate + Quartz + mica				
893-897.3	" " " + " "	3737	4.5		
897.3-907	" "				
907-911.5	" " numerous stringers				
911.5-920	" " 12" Carbonate + Quartz				
920-926	Silicified + Carbonated Fracture	3738	6		
926-930.5	" + " "	3739	4.5		
930.5-938	Green Carbonate Fractured 7' ledges	3740	7.5		
938-950	" " "	3741	12		
950-955	Silicified + Carbonated				
955-960	" + "	3742	5		
960	Diorite (end of hole)				

N.M.P. TORONTO - STOCK FORM NO. 501 REV. 12/51

DRILLED BY

J. Newman

SIGNED

Ralph Aug.