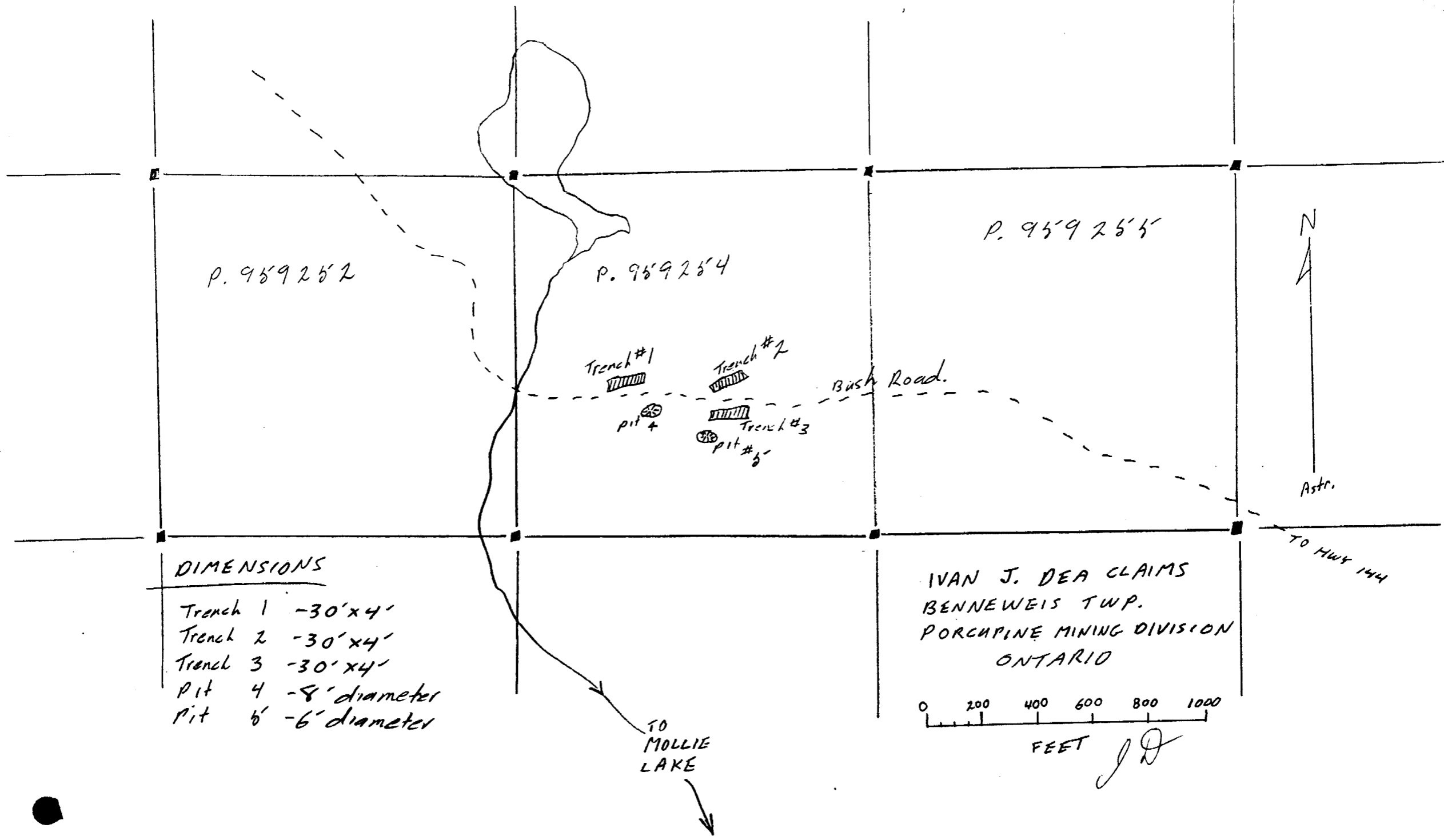


BENNEWEIS TOWNSHIP CLAIMS

TIME LOG - 1987\*\*

<u>NAME</u>	<u>ADDRESS</u>	<u>WORK DONE</u>	<u>DATE WORKED</u>	<u>DAYS CREDIT</u>
Ivan Jack Dea	218 Polaris Rd.	Prospecting	May 1/87	2
	Timmins, Ont.	"	" 2 "	2
	P4N 4L4	"	" 3 "	2
		"	" 10 "	2
		"	" 11 "	2
		"	" 12 "	2
		Trenching with gas plugger	May 18/87	4
		"	" 19 "	4
		"	June 4/87	4
		"	" 5 "	4
		"	" 16 "	4
		"	" 17 "	4
		"	" 23 "	4
		"	" 24 "	4
		"	July 22/87	4
		"	" 23 "	4
		"	" 24 "	4
		"	" 25 "	4
Total Days Credit				60

\*\* Time log refers to time claimed only and is based on one day's credit for every six hours worked (prospecting) and one day's credit for every three hours worked (gas plugger operation).



P. 959252

P. 959254

P. 959255

Trench #1

Trench #2

Bush Road.

Pit #4

Trench #3  
Pit #5



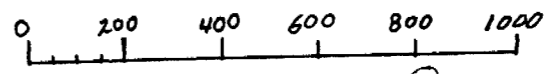
Astr.

TO HWY 144

DIMENSIONS

- Trench 1 - 30' x 4'
- Trench 2 - 30' x 4'
- Trench 3 - 30' x 4'
- Pit 4 - 8' diameter
- Pit 5 - 6' diameter

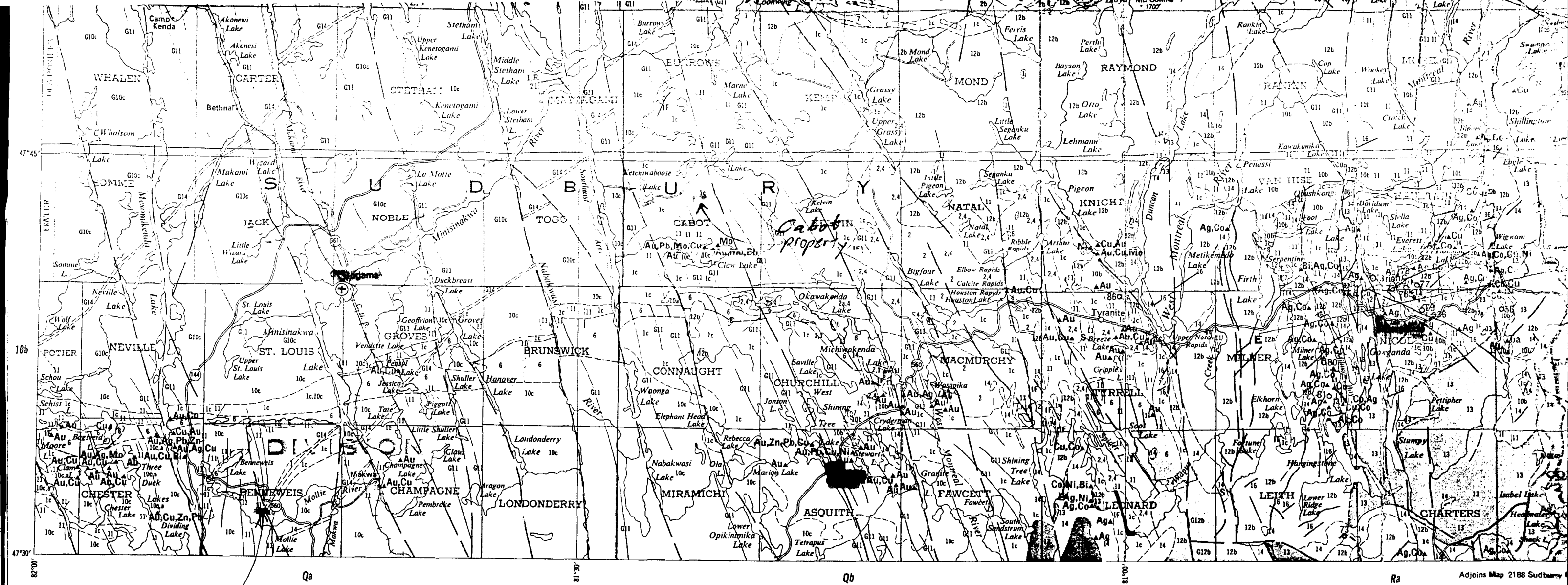
IVAN J. DEA CLAIMS  
BENNEWEIS TWP.  
PORCPINE MINING DIVISION  
ONTARIO



FEET

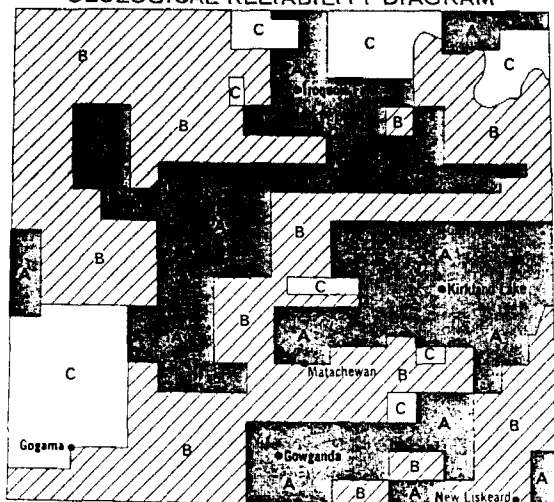
JD

TO  
MOLLIE  
LAKE



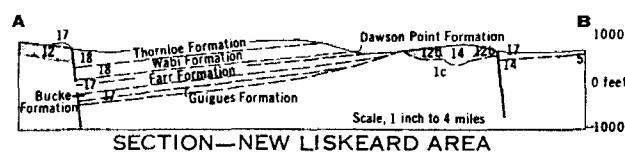
**Benneweis Property**

**GEOLOGICAL RELIABILITY DIAGRAM**

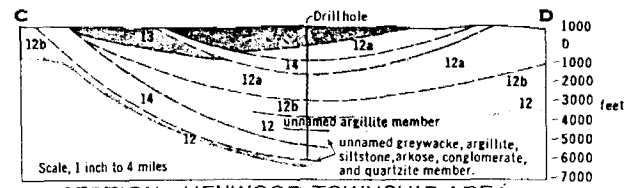


- A Detailed mapping; 1" to 1000'; 1" to 1/4 mile; 1" to 1/2 mile.
- B Semi-detailed and reconnaissance mapping; 1" to 1/2 mile; 1" to 1 mile; 1" to 2 miles.
- C Mostly unmapped.

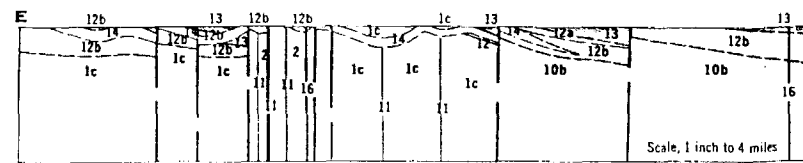
In those areas designated on the reliability map as B or C, geological contacts were generally drawn in from limited geophysical and (or) diamond drill hole information.



SECTION—NEW LISKEARD AREA



SECTION—HENWOOD TOWNSHIP AREA



SECTION—GOWANDA AREA

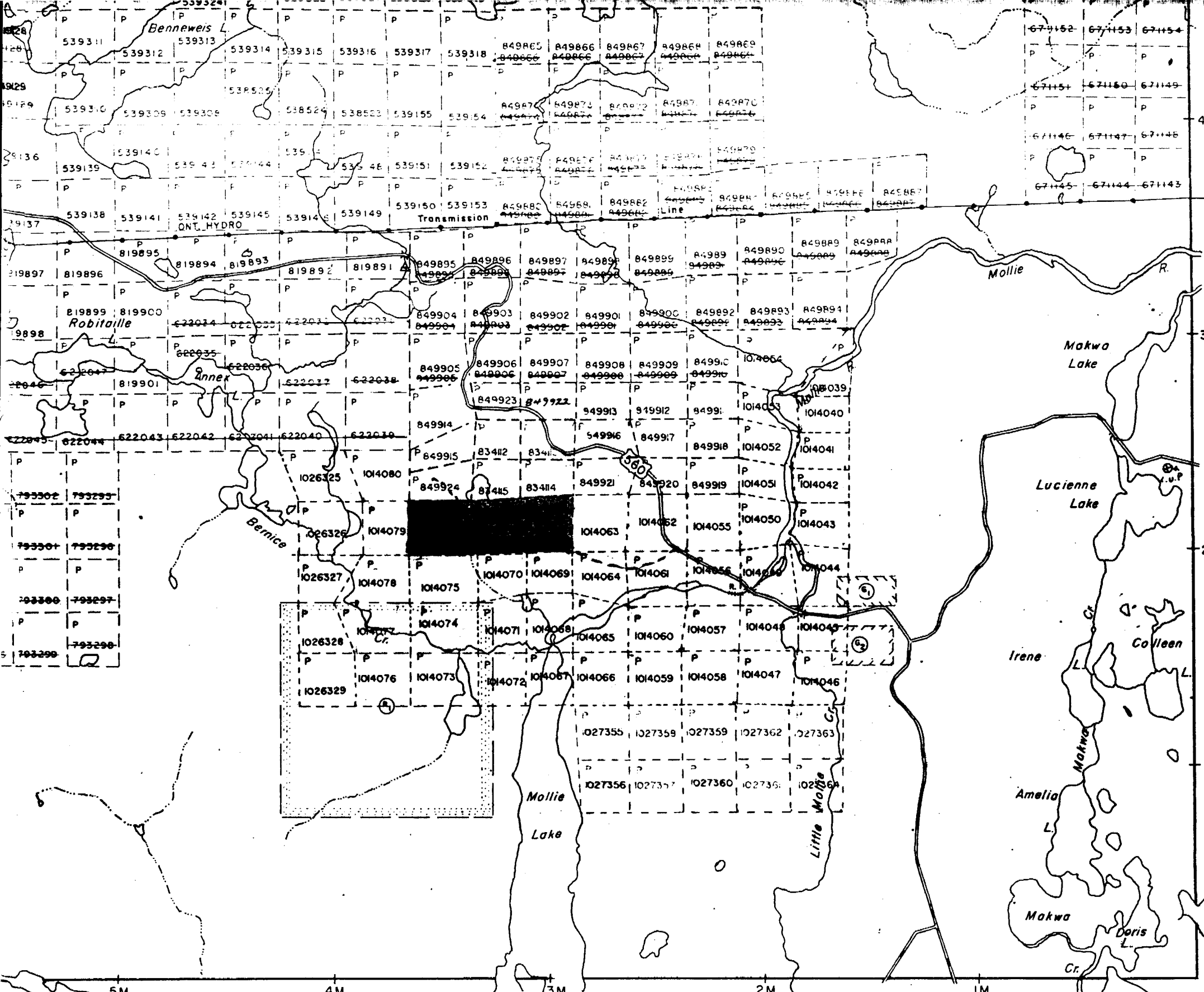
**Map 2205**

**TIMMINS-KIRKLAND LAKE**  
**Geological Compilation Series**

**COCHRANE, SUDBURY AND TIMISKAMING**

Scale 1:253,440 or 1 Inch to 4 Miles





CHAMPAGNE TWP.

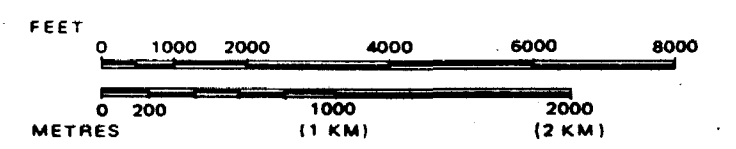
VROOMAN TWP.

**DISPOSITION OF CROWN LANDS**

TYPE OF DOCUMENT	SYMBOL
PATENT, SURFACE & MINING RIGHTS	⊕
" SURFACE RIGHTS ONLY	⊙
" MINING RIGHTS ONLY	⊖
LEASE, SURFACE & MINING RIGHTS	⊞
" SURFACE RIGHTS ONLY	⊟
" MINING RIGHTS ONLY	⊠
LICENCE OF OCCUPATION	▼
ORDER-IN-COUNCIL	OC
RESERVATION	⊗
CANCELLED	⊘
SAND & GRAVEL	⊚

NOTE: MINING RIGHTS IN PARCELS PATENTED PRIOR TO MAY 6, 1913, VESTED IN ORIGINAL PATENTEE BY THE PUBLIC LANDS ACT, R.S.O. 1970, CHAP. 380, SEC. 63, SUBSEC 1.

SCALE: 1 INCH = 40 CHAINS



TOWNSHIP  
**BENNEWEIS**  
 M.N.R. ADMINISTRATIVE DISTRICT  
**GOGAMA**  
 MINING DIVISION  
**PORCUPINE**  
 LAND TITLES / REGISTRY DIVISION  
**SUDBURY**



Date MARCH, 1985  
 Number **G-3222**



41P11N9006 63.5118 CABOT

020

218 Polaris Road,  
Timmins, Ont.  
P4N 4L4

November 30, 1987.

Mr. Edward R. Solonyka,  
OMEP Administrator,  
Minerals Development and Lands Branch,  
Ministry of Northern Development and Mines,  
3rd Floor,  
880 Bay Street,  
TORONTO, Ont.  
M5S 1Z8

RE: Cabot Township Property  
OM 86-5-I-231

Dear Sir:

Between May 1, 1987 and October 30, 1987, I worked periodically on the Cabot Township claims with most of the work done on claim L.901522. Work consisted of prospecting on claims L.901517, L.901521 and L.901522; plus trenching and pitting on claim L.901522.

During the fall of 1986, Mr. J. Newsome, a geologist with Utah Mines Ltd., visited the west claims numbered L.724638, L.724639, L.724640 and L.724641. I am including a copy of his findings, including sketches and assay results for your information. This is in addition to the required OMEP information for 1987. The property consists of 7 claims situated in central Cabot Township, Larder Lake Mining Division, Ontario. Location maps are included.

Yours truly,

Ivan Dea.

Encl.

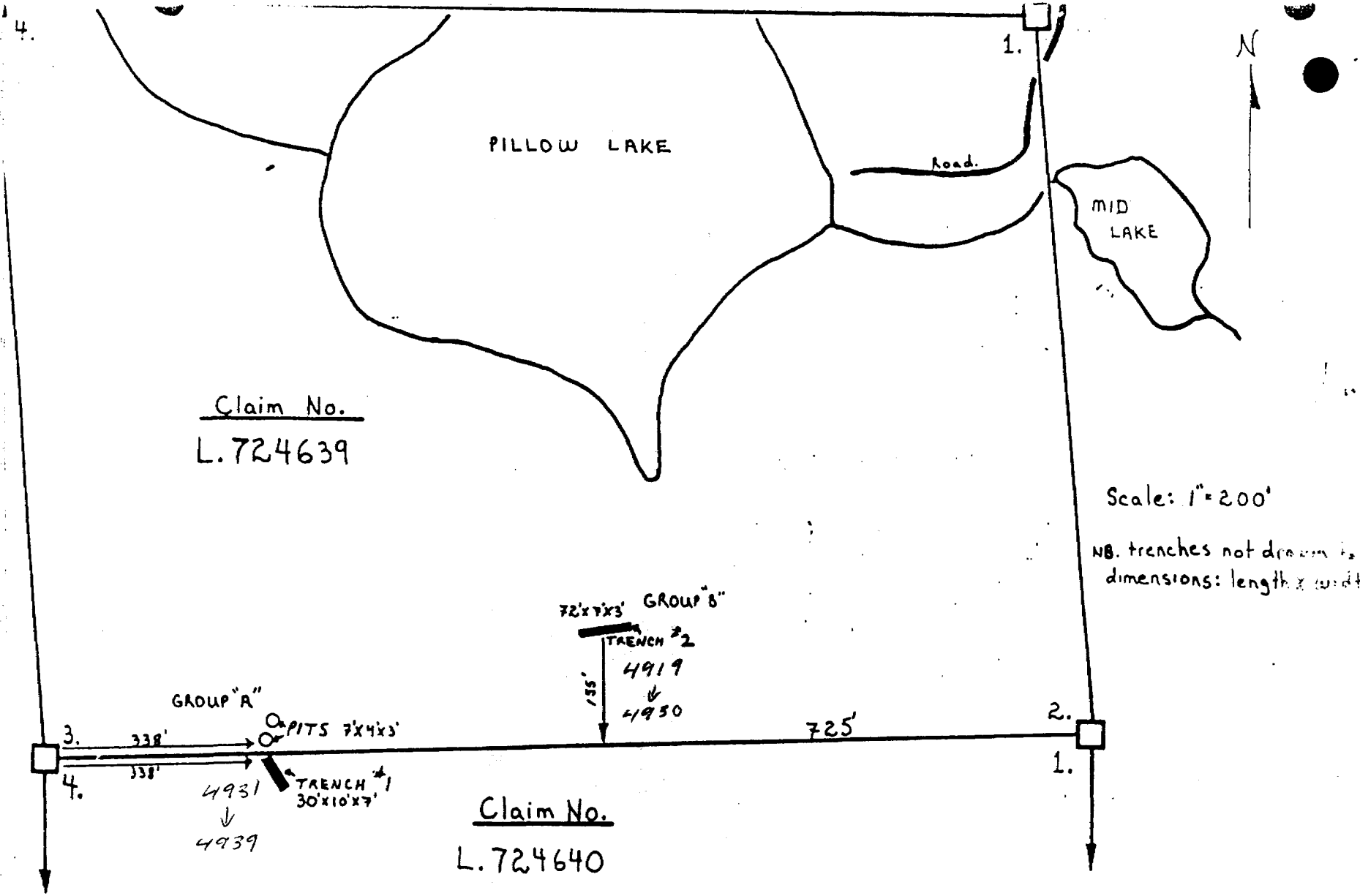
CABOT TOWNSHIP CLAIMS

TIME LOG - 1987 \*\*

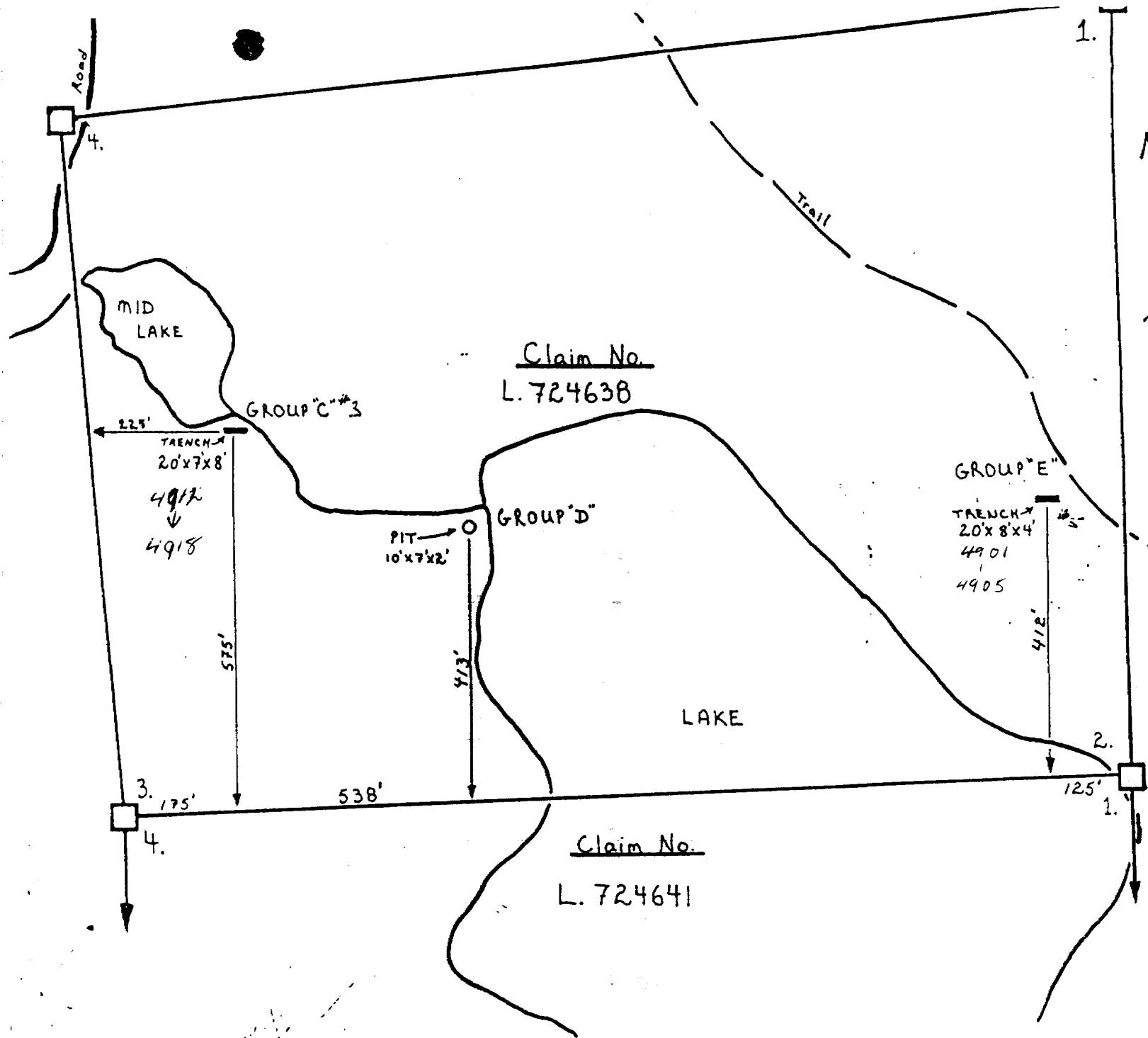
<u>NAME</u>	<u>ADDRESS</u>	<u>WORK DONE</u>	<u>DATE WORKED</u>	<u>DAYS CREDIT</u>
Ivan Jack Dea	218 polaris Rd. Timmins, Ont. P4N 4L4	Prospecting	May 4/87	2
		"	" 5 "	2
		"	" 6 "	2
		"	" 7 "	2
		"	" 26 "	2
		"	" 27 "	2
		"	" 28 "	2
		Trenching with gas plugger	June 18/87	4
			" 19 "	4
			" 20 "	4
		"	July 3/87	4
		"	" 4 "	4
		"	" 5 "	4
		"	" 6 "	4
		"	" 7 "	4
		"	August 12/87	4
		"	" 13 "	4
		"	" 14 "	4
		"	" 15 "	4
		"	" 16 "	4
		"	" 24 "	4
		"	" 25 "	4
		"	September 8/87	4
		"	" 9 "	4
		"	" 10 "	4

Total Days Credit 86

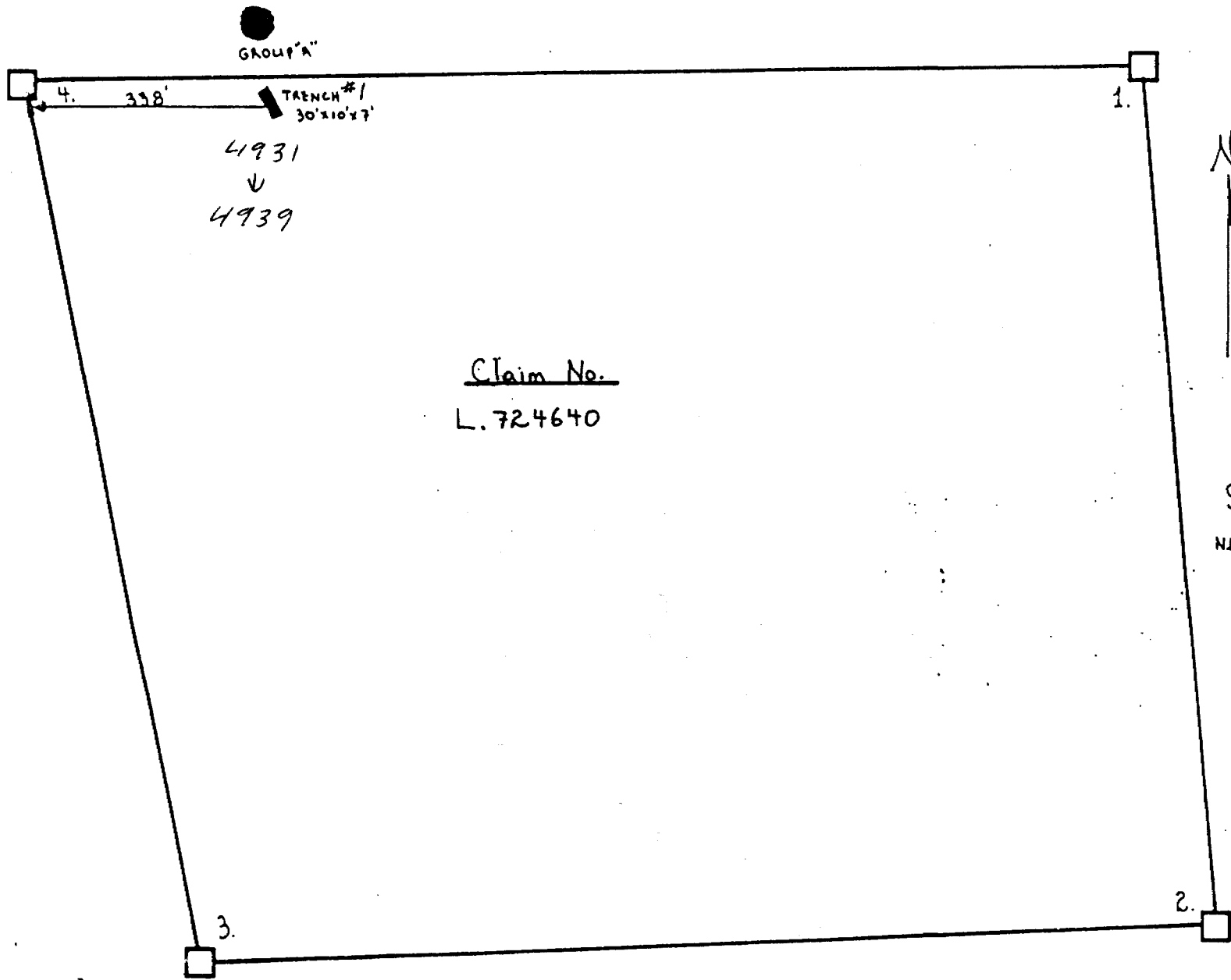
\*\* Time log refers to time claimed only and is based on one day's credit for every six hours worked (prospecting) and one day's credit for every three hours worked (gas plugger operation)



*Handwritten signature or initials*







GROUP "A"

4. 338'

TRENCH #1  
30'x10'x7'

4931  
↓  
4939

Claim No.

L. 724640



Scale 1" = 200'

NB. trench not drawn  
dimensions: length

IDEA OPTION - CABOT TOWNSHIP

Location Trench No. 5:

Pb-Zn showing : 40'x5', blasted trench in sheared (4'x5' wide shear zone) intermediate volcanics (andesite to dacite tuff). Highly fractured with calcite +/- gal. +/- py infilling fractures.

<u>Sample No.</u>	<u>Description</u>
4901	Dominantly host rock with thin (< 1/16" wide) calcite fracture infillings with approximately 2% disseminated pyrite and 1-2% gelena. Fracture infillings comprise < 5% of total rock volume. Trace malachite in places.
4902	As above
4903	As above
4904	As above
4905	As above

Location Trench No. 4: *Claim L. 901821*

Ag showing to east of claims group: 90'x8' blasted trench in very fine grained medium green mafic to intermediate volcanic, following a 3" - 24" wide highly brecciated calcite +/- quartz vein with up to 10-15% disseminated to semi-massive clots of sulphides (py+/-aspy) throughout. Minor cobalt bloom and azurite staining noted.

<u>Sample No.</u>	<u>Description</u>
4907	Calcite vein material with 3-5% sulphides (py+/-aspy)
4908	Calcite vein material with 2-3% sulphides (py+/-aspy)
4909	Wall rock with approximately 2% disseminated pyrite throughout + trace cpy.

EA OPTION  
CABOT TW.  
86/10

( 2 )

Sample No.            Description

4910                    Wallrock with approximately 10% py generally as  
smears along fractures +/- trace cpy.

4911                    Calcite vein material with approximately 10% sul-  
phides (aspy+py).

Location Trench No. 3:

Blasted pits in massive andesite to basalt flows with  
narrow 2'-3' wide shears or oxidized 'pods'. Disseminated to  
semi-massive sulphides within main part of shears. = Dominantly  
py+po with minor amounts of cpy+ bornite and minor cobalt bloom.  
"Cobalt Hill" showing.

Sample                    Description

4912                    150' N. of Trench No. 3: fractured quartz vein  
with approximately 20% fine grained disseminated pyrite + abundant  
malachite staining and possibly chalcocite.

4013                    Same area as 4012: semi massive pyrite.

4014                    Semi-massive pyrite with trace malachite.

4015                    Semi-massive sulphides = dominantly py with  
lesser amounts of po+ boronite.

4016                    Wallrock = dark green, calcareous, chloritized  
mafic volcanic-basalt flow with trace disseminated sulphides.

4017                    Semi-massive to massive pyrite with trace malachite  
and cobalt bloom from central part of 2' wide shear zone.

● EA OPTION  
CABOT TWP.  
86/10

( 3 )

<u>Sample</u>	<u>Description</u>
4Q18	Massive sulphides = dominantly py-po with lesser cpy and trace cobalt bloom = loose grab sample .

Location Trench No. 2:

West of Trench No.1: presumed area of Au-Cu showing. Approximately a 25' wide shear zone in moderately carbonatized (Fe-dolomite?) rocks. Originally mapped as sediments (JonSmith), then felsic tuffs (Kidd Creek), but probably mafic volcanics, due to the degree of carbonatization. Approximately 2-10% disseminated sulphides (py) throughout with 4"-6" pods and streaks of semi-massive sulphides in places. Trace cpy +/- bornite and malachite stain in places + quartz vein material.

4919                      Approximately 200' NE of Trench No.2 (up-section):  
Moderate to strongly carbonatized rock in old blasted pits with 3-5% disseminated sulphides (py) throughout.

4920                      As above

4921                      Semi-massive py grab sample from Trench No.  
2.

4922                      4" wide quartz carbonate (ankerite?) vein material,  
with trace sulphides.

4923                      Sheared wallrock with 5% sulphides (py) + trace  
bornite and malachite stain.

4924                      dominantly semi-massive py + minor quartz.

IDEA OPTION

CABOT TWP.

86/10

( 4 )

<u>Sample</u>	<u>Description</u>
4925	'crystal'tuff (wallrock) with minor qtz-carbonate veins and trace 1% disseminated pyrite.
4926	moderately chloritized wallrock (sheared) with approximately 10% disseminated py and minor quartz-carbonate veins.
4927	As above minus quartz-carbonate veining.
4928	As above sample 4927.
4929	As above.
4930	As above.

Location Trench No. 1:

South along claim line from access road. 1'-3' wide shear zone striking N 170°E within moderately chloritized, medium green mafic volcanics (andesite ash tuff/flows) with schistosity striking N 40°-45°E. Trace-1% disseminated pyrite throughout host rock.

<u>Sample</u>	<u>Description</u>
4931	Moderately carbonatized (Fe-dolomite?) rock from shear zone with 20-30% disseminated py.
4932	highly carbonatized rock from shear zone with 5-8% disseminated py.
4933	highly sericitized rock from shear zone with 30-40% disseminated to semi-massive pyrite.

IDEA OPTION

CABOT TWP.

86/10

( 5 )

<u>Sample</u>	<u>Description</u>
4934	dominantly sericite from shear zone with trace very fine grained disseminated pyrite.
4935	disseminated to semi-massive sulphides (py) with minor quartz-carbonate veins in a weakly carbonatized host.
4936	3-5% disseminated sulphides (py) in a weakly carbonatized host rock from shear zone with relatively abundant calcite veins +/- trace pyrite.
4938	wallrock, approximately, 5' from shear zone with 1-2% disseminated very fine grained pyrite.
4939	wallrock, approximately 30' from shear zone, weakly carbonatized (calcareous) mafic volcanic, with trace very fine grained disseminated pyrite.

\*\*\*\* Certificate of ASSAY \*\*\*\*

Company: UTAH MINES  
 Project: 1411  
 Attention: J.W. NEWSOME

File: 62-437/P1  
 Date: OCT 11/86  
 Type: ROCK ASSAY

We hereby certify the following results for samples submitted.

Sample Number	CU %	PB %	ZN %	NI %	CO %	AS %
4901	0.104	1.62	0.17			
4902	0.078	1.30	1.64			
4903	0.085	1.10	0.29			
4904	0.035	2.08	0.09			
4905	0.108	2.82	0.18			
4907	0.021	0.26	0.02		0.032	1.75
4908	0.028	0.24	0.05		0.057	1.18
4909	0.047	0.01	0.01		0.007	0.01
4910	0.083	0.01	0.02		0.010	0.01
4911	0.230	0.02	0.02		1.970	17.80
4912	0.950	0.01	0.01			
4913	0.172	0.01	0.01			
4914	0.455	0.01	0.01			
4915	17.850	0.01	0.01			
4916	0.210	0.01	0.01	0.001		
4917	2.280	0.01	0.01	0.001	0.028	
4918	13.900	0.01	0.01	0.005	0.096	
4919	1.180					0.01
4920	0.420					0.01
4921	4.140					0.01
4922	0.200		0.01			0.01
4923	1.180		0.02			
4924	0.262		0.01			
4925	0.187		0.01			0.01
4926	0.063		0.01			0.01
4927	0.344		0.01			0.01
4928	0.253	0.01	0.01			0.01
4929	0.034		0.01			0.01
4930	0.202	0.01	0.01			0.01
4931	0.116	0.01	0.01			0.01

Certified by J. L. Smith

MIN-EN LABORATORIES LTD.

\*\*\*\* Certificate of ASSAY \*\*\*\*

Company: UTAH MINES  
 Project: 1411  
 Attention: J.W. NEWSOME

File: 62-437/P2  
 Date: OCT 11/86  
 Type: ROCK GEOCHEM

We hereby certify the following results for samples submitted.

Sample Number	AG	AG	AU	AU
	G/TONNE	OZ/TON	G/TONNE	OZ/TON
4901	2.4	0.07	0.04	0.001
4902	4.2	0.12	0.02	0.001
4903	2.0	0.06	0.08	0.002
4904	22.3	0.65	0.03	0.001
4905	37.5	1.09	0.09	0.003
4907	3.6	0.11	0.05	0.001
4908	3.8	0.11	0.03	0.001
4909	2.5	0.07	0.01	0.001
4910	2.6	0.08	0.02	0.001
4911	1850.0	53.96	0.32	0.009
4912	18.0	0.53	0.27	0.008
4913	9.7	0.28	0.18	0.005
4914	4.8	0.14	0.60	0.018
4915	34.0	0.99	5.79	0.169
4916	1.2	0.04	0.03	0.001
4917	8.5	0.25	3.35	0.098
4918	49.0	1.43	7.28	0.212
4919	5.4	0.16	1.00	0.029
4920	2.4	0.07	0.40	0.012
4921	9.4	0.27	0.80	0.023
4922	0.2	0.01	0.05	0.001
4923	2.5	0.07	0.38	0.011
4924	5.0	0.15	0.78	0.023
4925	1.4	0.04	0.13	0.004
4926	0.5	0.01	0.20	0.006
4927	1.9	0.06	1.20	0.035
4928	0.6	0.02	1.01	0.029
4929	0.2	0.01	0.03	0.001
4930	2.0	0.06	0.16	0.005
4931	2.5	0.07	0.04	0.001

Certified by J. L. Lutz

MIN-EN LABORATORIES LTD.



\*\*\*\* Certificate of ASSAY \*\*\*\*

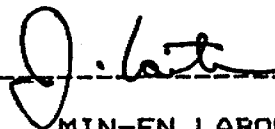
Company: UTAH MINES  
Project: 1411  
Attention: J.W. NEWSOME

File: 62-437/P3  
Date: OCT 11/86  
Type: ROCK ASSAY

We hereby certify the following results for samples submitted.

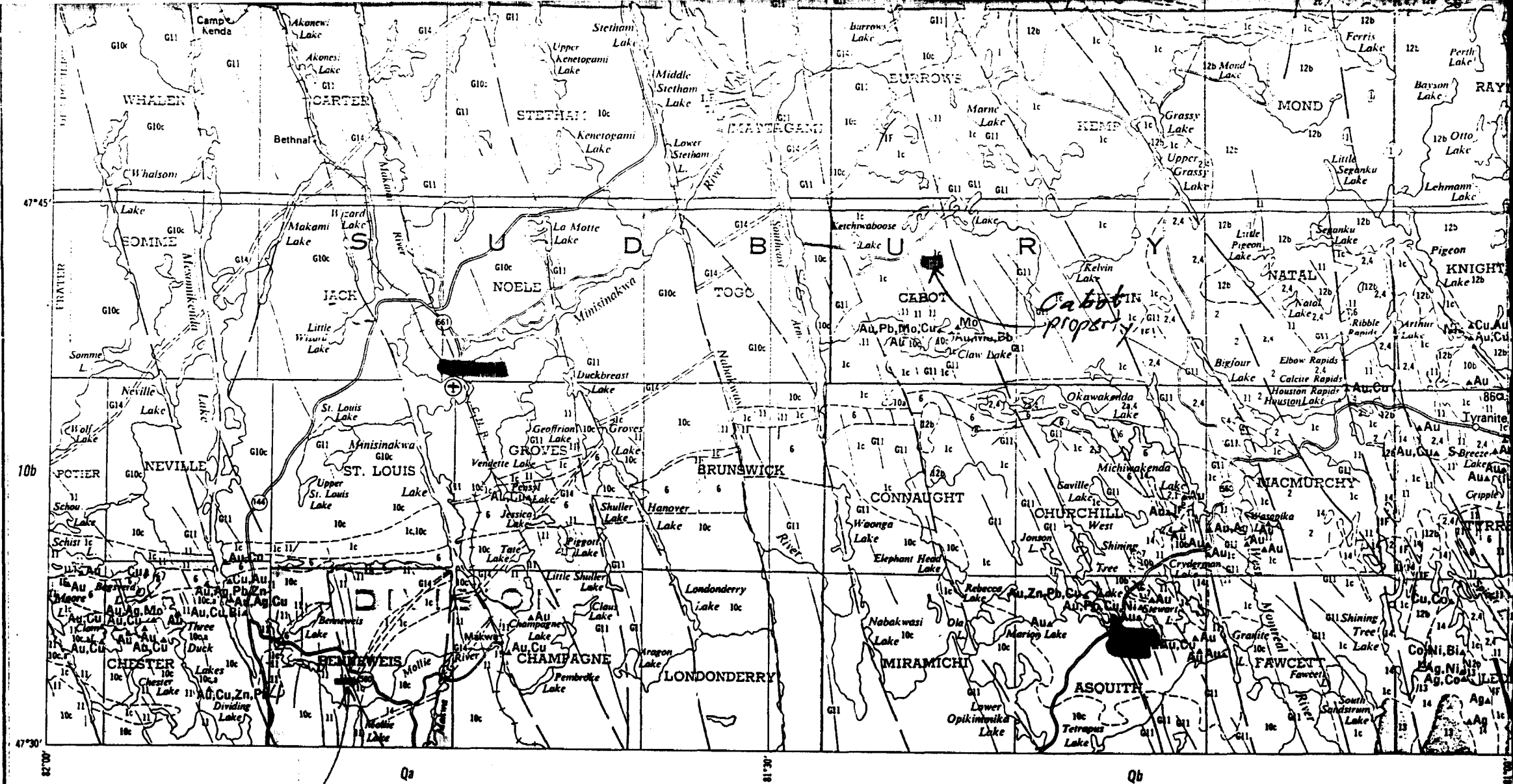
Sample Number	CU %	PB %	ZN %	AS %
4932	0.083	0.01	0.01	0.01
4933	0.030	0.01	0.01	0.01
4934	0.007	0.01	0.01	0.01
4935	0.394	0.02	0.01	0.01
4936	0.064	0.01	0.01	0.01
4937	0.290	0.01	0.01	0.01
4938	0.028	0.01	0.01	0.01
4939	0.021	0.01	0.01	0.01

Certified by



MIN-EN LABORATORIES LTD.

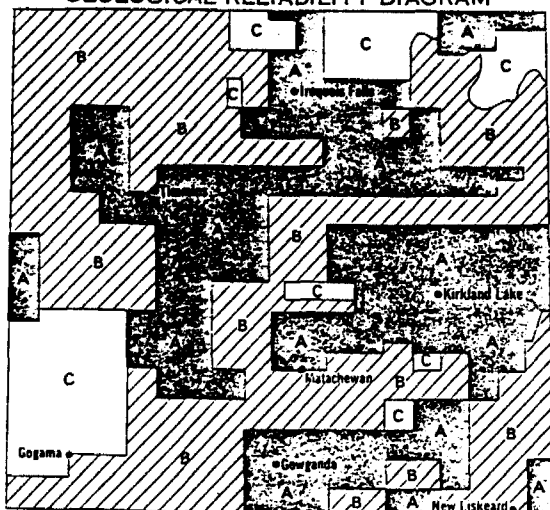




Published 1973

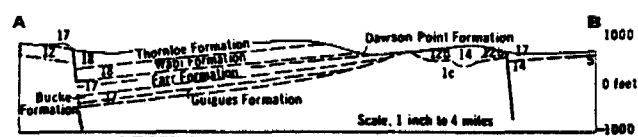
## Benneweis Property

### GEOLOGICAL RELIABILITY DIAGRAM

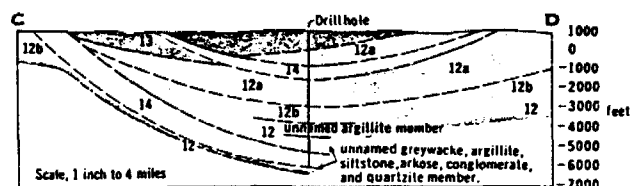


- A Detailed mapping; 1" to 1000'; 1" to 1/4 mile; 1" to 1/2 mile.  
 B Semi-detailed and reconnaissance mapping; 1" to 1/2 mile; 1" to 1 mile; 1" to 2 miles.  
 C Mostly unmapped.

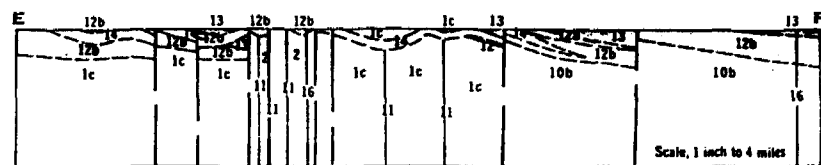
In those areas designated on the reliability map as B or C, geological contacts were generally drawn in from limited geophysical and (or) diamond drill hole information.



SECTION—NEW LISKEARD AREA



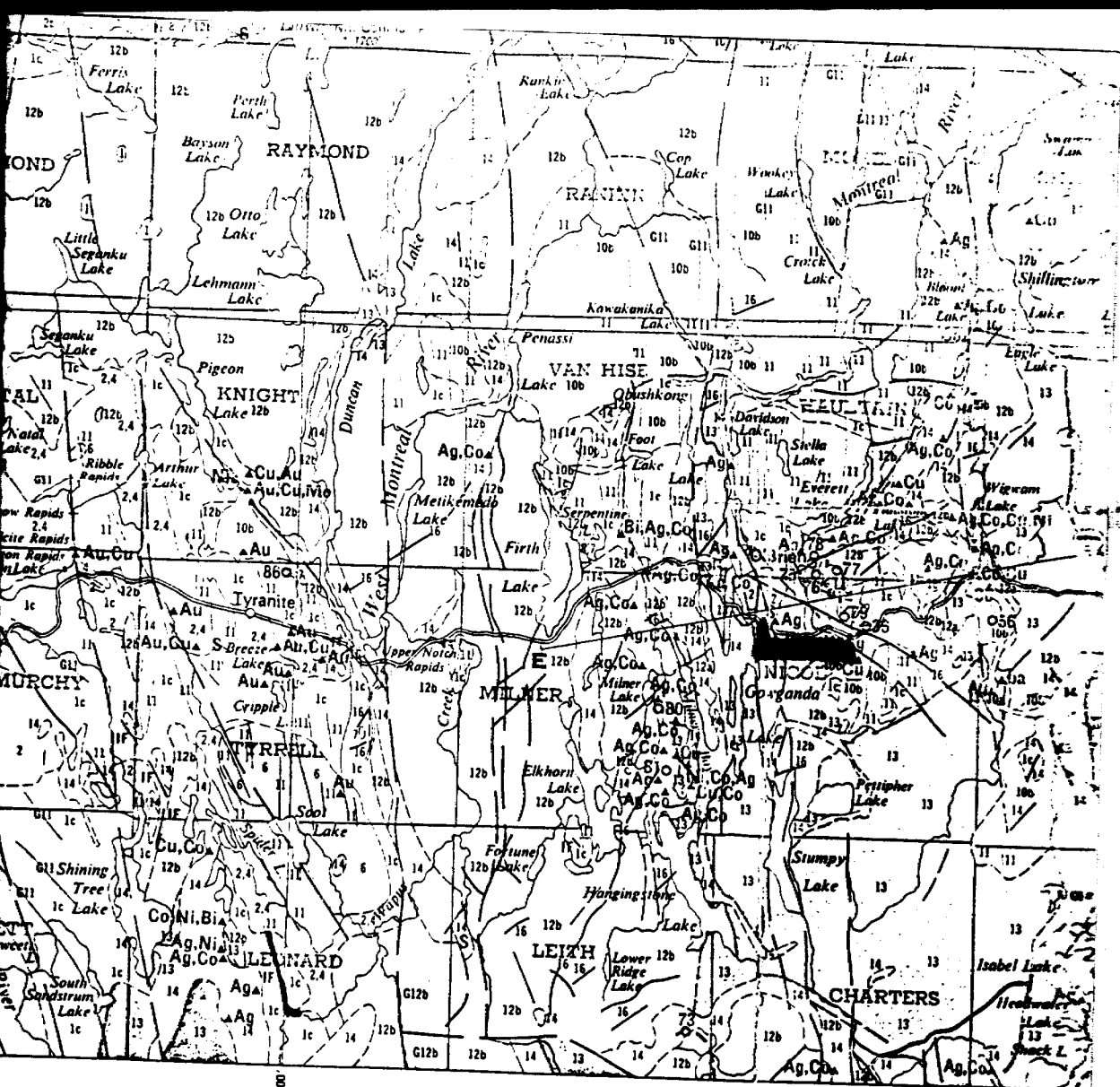
SECTION—HENWOOD TOWNSHIP AREA



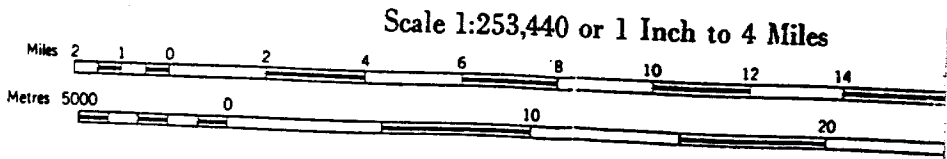
SECTION—GOWGANDA AREA

Mile

Metres



Map 2205  
**TIMMINS-KIRKLAND LA**  
 Geological Compilation Series  
 COCHRANE, SUDBURY AND TIMISKAMING



Burrows Twp. - M.691

THE TOWNSHIP OF  
OF

CABOT

DISTRICT OF  
SUDBURY

LARDER LAKE  
MINING DIVISION

SCALE: 1-INCH=40 CHAINS

LEGEND

PATENTED LAND	Ⓟ
CROWN LAND SALE	C.S.
LEASES	Ⓛ
LOCATED LAND	Loc.
LICENSE OF OCCUPATION	L.O.
MINING RIGHTS ONLY	M.R.O.
SURFACE RIGHTS ONLY	S.R.O.
ROADS	—
IMPROVED ROADS	—
KING'S HIGHWAYS	—
RAILWAYS	—
POWER LINES	—
MARSH OR MUSKEG	—
MINES	ⓧ
CANCELLED	- C.

NOTES

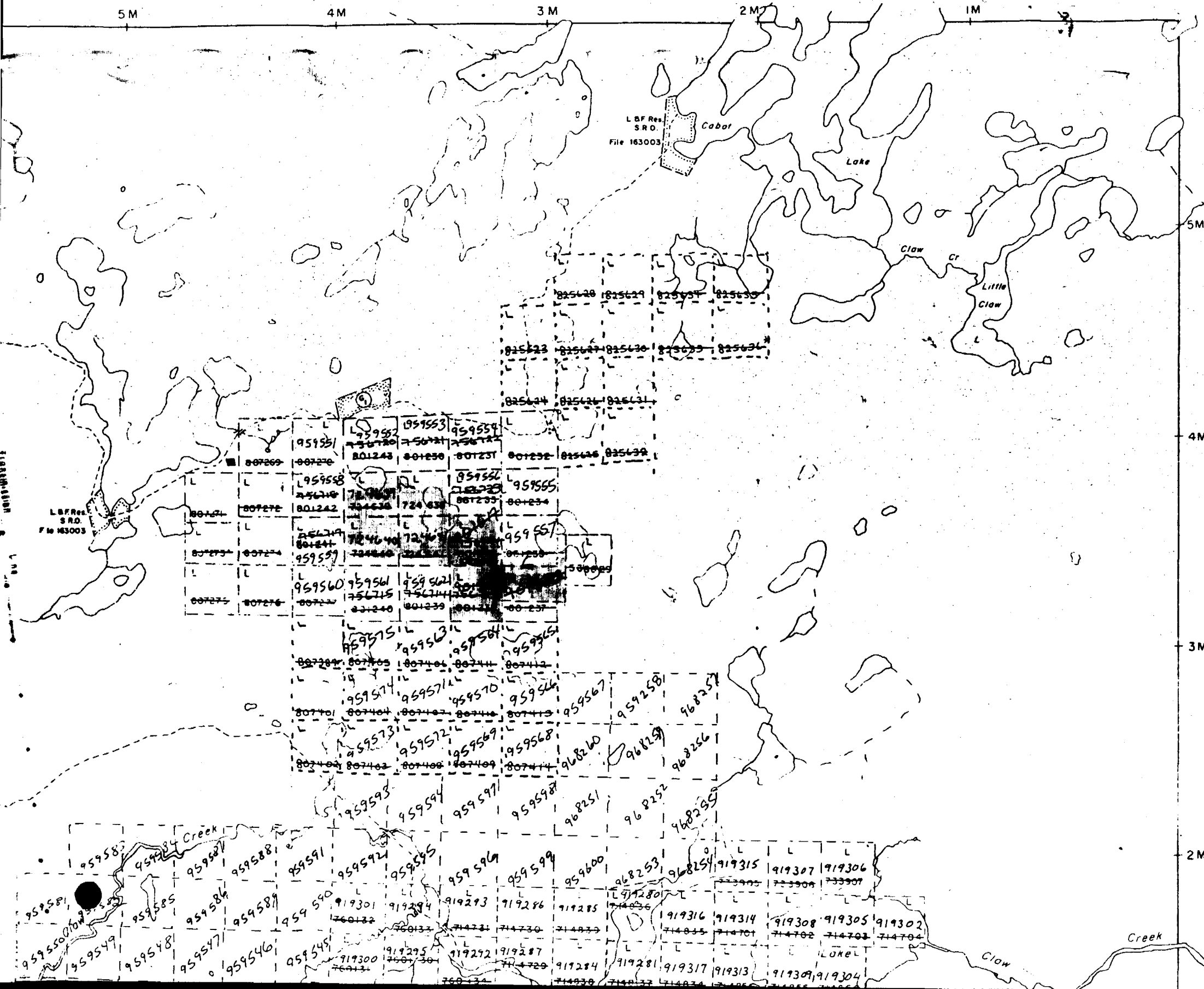
400' surface rights reservation along the shores of all lakes and rivers.

Flooding rights on Mattagami Lake to contour elev. 1070' to Northern Ont. Power Co. Ltd. L.O. 7199. File: 36881.

SAND and GRAVEL

Ⓟ MNR GRAVEL RESERVE 3C22

Trapline Cabin



Kelvin Twp. - M.964

