



41P11NW0420 15 CONNAUGHT

010

DIAMOND DRILLING

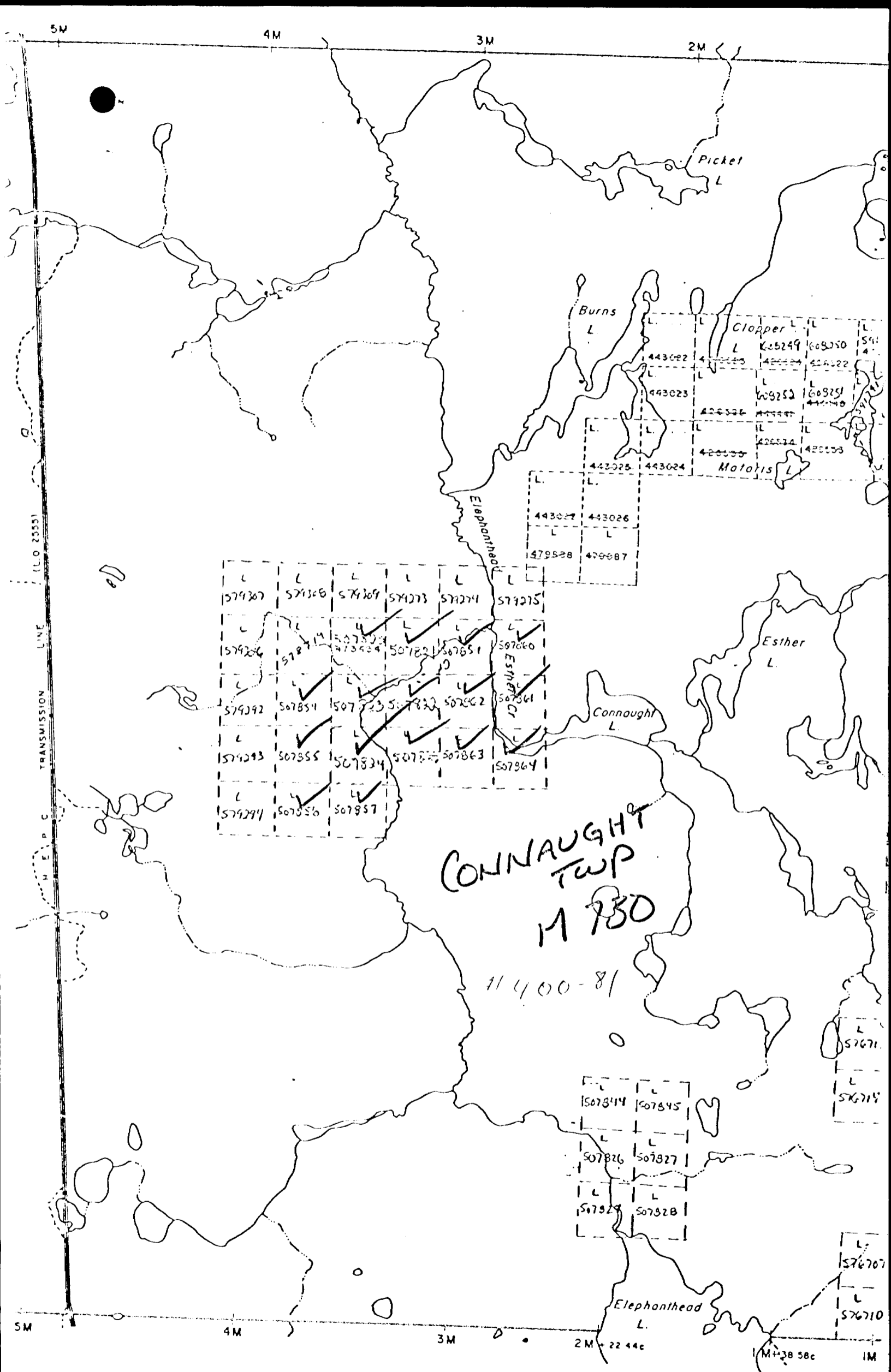
TOWNSHIP: CONNAUGHT

REPORT No.: 15

WORK PERFORMED BY: Patino Mines Ltd.

<u>CLAIM No.</u>	<u>HOLE No.</u>	<u>FOOTAGE</u>	<u>DATE</u>	<u>NOTE</u>
L 507859	St-11-4	426.0	Feb/81	(1)
	St-11-3	494.0	Feb/81	(1)
L 507822	St-11-2	462.0	Jan/81	(1)
	St-11-1	309.0	Jan/81	(1)

NOTES: (1) 400-81



MINES (QUEBEC) LIMITED
 ATINO (QUEBEC) LIMITEE

SHININGTREE II PROPERTY

DIP TEST			LEVEL	ELEVATION	HOLE No.
FOOTAGE	ANGLE		LOCATION	BEARING	SHEET No.
	RECORDING	CORRECTED			
200	-53°	-44°	SECTION 12+00N; L 4+00E	350°	1/7
400'	-53°	-44°	LATITUDE	LENGTH 494'	LOGGED BY P. BORN
404'	-52°	-43°	DEPARTURE -45°	CORE SIZE A0	PURPOSE EXPLORATION
				FINISHED Feb. 7 - 15, 1981	TOT. RECOVERY

FOOTAGE FROM TO	DESCRIPTION	GRADE ESTIMATE	SAMPLE NO.	FOOTAGE			ASSAYS					RECOVERY			
				FROM	TO	LENGTH	% CU	ppb AU	ppm AG	CU CUM. W X A	AU CUM. W X A	RUN	SNOW		
0	42.0	OVERBURDEN	4026	46.2	46.5	0.3		21	0.4					Q-C vein	
			4027	46.5	51.5	5.0		27	0.2					tr py	
2.0	295.0	GRANODIORITE (42 - 90)	402B	No sample											
		c.g. massive, rather homogeneous gndrt. Grey-green colour w. biotite - 5%, chlorite 10%, sericite - 10%, qtz - 30% - 40%, plag. felds 40%, the rest kspar (little or none). Also spotty - white-yellow leucoxene? (could be carbonate?) but not siderite. likely	4029	83.2	83.5	0.3		988	2.0					Q-C vein	
		Alteration: slight - moderate - mainly sericite and chlorite	4030	83.5	84.2	0.7		343	0.9					1% py	
		Shearing: not too common but small (4 - 6") moderately sheared sections are present with higher chlorite%	4031	84.2	84.7	0.5		89	ND					Q-C vein 1% py	
		Sulphides: not present or only trace amounts of pyrite	4032	84.7	89.0	4.3		21	0.2					tr py	
		Qtz-carb. veining (calcite) 1 - 2% on average	4033	104.2	104.6	0.4		14	0.1					Q-C vein	
		Section of most interest are listed below:	4034	108	109	1.0		0.1	ND					hm'n	
		46.2 - 46.5' - altered gndrt w. sericite and chlorite high % and poss. Fe carbonate (or leucoxene?) but no py	4035	109	111	2.0		14	0.2					hm'n	
		63.6 - 64.0' - sheared gndrt - f.g. - m.g. - high chlorite and 1% py	4036	111	112.3	1.3		137	0.2					hm'n	
		83.2 - 83.5' - qtz - carb vein no sulphides	4151	116.5	117.0	0.5		(0.04 oz/t)						tr py	
		83.5 - 84.2' - slight shear w. chl. and ser. alteration	4037	127.7	130.0	2.3		7	ND					tr py	
		84.2 - 84.7' - qtz-carb vein w. 1% py	4038	130.0	132.9	2.9		14	0.3					tr py chl'd highly	
		89.0 - 89.3' - shear - m.g. - f.g. gndrt - high chlorite	4039	132.9	136.0	3.1		69	ND					" " " "	
		(90 - 110.0)	4040	152.0	154.0	2.0		69	ND					gndrt	
		c.g. gndrt similar to above but alteration types are more variable: The predominant type of alteration is a slightly hematized gndrt w. creamy coloured (presumably sericitized) plag. feldspars which are well formed (euhedral)	4152	167.8	168	0.2		110	0.2					Q-C veinlet	
			4041	No sample											
			4042	218	220	2.0		21	ND					gndrt	
			4043	233.4	233.9	0.5		42	3.6					tr py shear	
			4044	233.9	239	5.1		27	ND					tr py	
			4045	249.4	250.4	1.0		34	1.5					shear Q-C veining	

PATINO MINES (QUEBEC) LIMITED
 MINES PATINO (QUEBEC) LIMITEE

SHEET NO. 2/7

HOLE NO. ST-2-3

FOOTAGE		DESCRIPTION	GRADE ESTIMATE	SAMPLE NO.	FOOTAGE			ASSAYS					RECC. RUN	
FROM	TO				FROM	TO	LENGTH	% CU	ppb AU	ppm AG	CU CUM. W X A	AU CUM. W X A		
		GRANODIORITE (cont'd)		4046										
		(111.0 - 112.3)		4165	264	266	2.0		21	0.6				tr py
		sheared gndrt? - rather chloritic - 30% f.g. - m.g. with 5 - 10% qtz eyes, 20% plag x'ts, contacts 70% to CA seem sharp - could also be an altered dyke - intermediate comp but looks sheared and chloritic probably a part of gndrt		4047	272	274	2.0		48	0.3				chl'd gndrt
		(112.3 - 153.0)		4048	287.5	288.5	1.0		48	ND				gndrt
				4049										
				4050										
				4051										
				4052										
		gndrt c.g. mass similar to 42 - 90' with slight alteration - sericite and chlorite but in this section the shearing is more frequent with sheared gndrt with a weakly developed fabric 60 - 70' to CA		4053	293.5	295.5	2.0		21	ND				Q-C vein
		Of interest below:		4054	295.5	298.0	2.5		55	ND				2 - 3% py
		133 - 136 - shear zone which is fairly sericitized and spotty 1% pyrite (average) but up to a max. of 5% py over 1"		4055	298	303	5.0		150	0.4				2 - 3% py
				4056	303	305	2.0		123	0.4				1% py local
				4057	305	309.5	4.5		42	0.3				1 - 2% py
				4058	309.5	310.2	0.7		48	ND				
		(153.0 - 193.0)		4059	318.6	319.4	0.8		21	0.1				10% Q-C vein
		c.g. gndrt fairly homogeneous, pinkish-grey colour		4060	335	335.2	0.2		48	0.4				2% py
		What is distinctive is the creamy coloured and well formed plag. crystals which are slightly (sometimes) surrounded by hematite (2%)		4061	335.2	340	4.8		109	0.3				1 - 2% py
		- 40% qtz, 40% plag, little or no kspar, biotite chlorite - 10%		4062	340	345	5.0		34	0.1				1 - 2% py
		Alteration - feldspars - sericite - qtz and epidote (1%)		4063	345	350	5.0		27	0.1				1% py
		Shearing - 1 - 2% of section		4064	350	355	5.0		34	0.2				1% py
		Qtz-carb (calcite) veining - none (4%)		4065	355	360	5.0		69	0.4				1% py
		Sulphides - none		4066	360	365	5.0		110	ND				1% py
		The contact between this and adjacent units (gndrt etc) is gradual since it is largely an alteration difference		4067	371.5	376.5	5.0		240	0.9				shear 2 - 3% py
				4068	376.5	378.5	2.0		35	ND				gndrt
				4069										
		(193.0 - 240.0)		4070	384.2	386.2	2.0		96	ND				hm'd gndrt
		gndrt ident to 42 - 90'		4071	394.5	399.5	5.0		42	ND				1% py
		c.g. gndrt, homogeneous, grey colour with 30% qtz, 5% biotite, 10% chlorite, 10% sericite, plag - 40%, little or no kspar		4072	404	406	2.0		62	ND				gndrt
		Alteration - chlorite and sericite around edge of qtz grains slightly rexted - with moderate alteration in some places		4073	414.5	418	3.5		110	0.1				1% py

FOOTAGE		DESCRIPTION	GRADE ESTIMATE	SAMPLE NO.	FOOTAGE			ASSAYS					RECOVERY	
FROM	TO				FROM	TO	LENGTH	% CU	OZ AU	OZ AG	CU CUM. W X A	AU CUM. W X A	RUN	SHO
478.2	483.5	GRANODIORITE c.g. gndrt with 30 - 40% qtz. Alteration - sericite (10 - 15%) and chlorite with several qtz-carb veins. 478.7 - 478.9 - qtz-carb vein with 3 - 5% py												
483.5	495.0	INTERMEDIATE DYKE f.g. grey massive dyke with 10% hematized plag. phenos and 1 - 5% qtz eyes - slightly sheared in some places - ident to other intermed. dykes												
495		END OF HOLE ST - 2 - 3 - 18 BOXES												

[Handwritten signature]

MINES (QUEBEC) LIMITED
PATINO (QUEBEC) LIMITEE

SHININGTREE II PROPERTY

FOOTAGE	DIP TEST	
	ANGLE	
	RECORDING	CORRECTED
0		-60°
200'	-66°	-59°
400'	-66°	-59°
462'	-65°	-58°

LEVEL
LOCATION 3 + 00W; 10 + 00N
SECTION
LATITUDE
DEPARTURE -60°

ELEVATION
BEARING 025°
LENGTH 462'
CORE SIZE AQ
FINISHED Jan. 24 - 29, 1981

HOLE No. ST-II-2
SHEET No. 1/6
LOGGED BY P. BORN
PURPOSE EXPLORATION
TOT. RECOVERY

FOOTAGE FROM TO	DESCRIPTION	GRADE ESTIMATE	SAMPLE NO.	FOOTAGE			ASSAYS					RECOVERY				
				FROM	TO	LENGTH	% CU	ppb AU	ppm AG	CU CUM. W X A	AU CUM. W X A	RUN	STOP			
0 3	OVERBURDEN		2778	10.8	12.5	5.0		38	1.3							
			2779		17.5	5.0		13	0.1							
3 10.8	GRANODIORITE C.g. massive and fairly homogeneous with 40% qtz, biotite 5 - 10% chlorite - 10% with plagioclase the predominant feldspar - 40% Textures - igneous plutonic - slightly rexted Alteration - sericite 10 - 15% with epidote minor not very distinct 1 - 2% locally no sulphides		2780	40.0	45.0	5.0		27	0.4							
			2781	75.0	77.4	2.4		tr	ND							
			2782		78.1	.7		1998	1.9	0.06oz/t Au						40% qtz vein + 1% py
			2783		83.0	4.9		48	1.0							1%py
			2784		83.1	.1		89	0.9							qtz vein
			2785		86.0	3.0		0.005	0.008	oz/t						
			2786		88.0	3.5		480	2.1							qtz veom + 1% py
10.8 12.5	INTERMEDIATE (compositional) DYKES fairly sharp contacts angles - 50 - 60° to CA dark grey colour and hard (siliceous comp?) massive and fine grained. The dyke rock contains about 5% calcite veining with 2 - 3% pyrite present from 10.8 - 11.3'		2787		93.0	1.5		89	1.5							1%py
			2788			5.0		27	0.3							
			2789	109.0	114.0	5.0		20	0.4							
			2790		119.0	5.0		26	ND							
12.5 88.0	GRANODIORITE similar or ident. to 3 - 10.8' c.g. massive gndrt. with 30 - 40% qtz 40% plag. felds little Kspar, biotite - 5%, chlorite - 10% and 10 - 15% sericite alteration - generally slight to moderate no sulphides Included in this are several sections where the feldspars are a cream colour, lighter colour; presumably due to the more altered nature of these feldspars - ie. sericitized and epidotized and qtz intergrowths although the feldspar outlines are euhedral. These sections are generally 6" - 1' wide (10% of total section) dyke of similar comp. to above occurs at 41.3 - 41.7 qtz veining - 1% with minor pyrite in one or two of these		2791	145.6	146.0	.4		247	0.6							
			2792		146.3	.3		117	0.2							qtz vein
			2793		150.0	5.0		34	ND							
			2794	150.0	155.0	5.0		26	0.6							
			2795		160.0	5.0		34	0.8							
			2796	180.0	185.0	5.0		20	ND							
			2797		190.0	5.0		41	0.1							
			2798	206.3	211.0	4.8		41	0.5							
			2799		214.6	3.6		34	0.7							
			2800		220.0	5.0		96	ND							

23960
100

MINES (QUEBEC) LIMITED PATINO (QUEBEC) LIMITEE SHININGTREE II PROPERTY	DIP TEST		LEVEL	ELEVATION	HOLE No. ST-II-1
	FOOTAGE	ANGLE	LOCATION 3+00N, 10+00W	BEARING 025°	SHEET No. 1/3
		RECORDING	CORRECTED	SECTION	LENGTH 309'
	0		-45°	LATITUDE	CORE SIZE AQ
200'	-53°	-45°	DEPARTURE -45°	FINISHED Jan. 21 - 24, 1981	TOT. RECOVERY
309'	-52°	-44°			

FOOTAGE FROM TO	DESCRIPTION	GRADE ESTIMATE	SAMPLE NO.	FOOTAGE			ASSAYS					RECOVERY		
				FROM	TO	LENGTH	% CU	ppb AU	ppm AG	CU CUM. W X A	AU CUM. W X A	RUN	SHOT	
0	4		2751	7.0	9.0	2.0		7	0.6					grdrt
			2752	31.0	32.0	1.0		10	ND					1% py
4	79.0		2753	No sample										
			2754	37.0	38.0	1.0		7	ND					grdrt
			2755	38.0	38.6	0.6		17	0.6					tr py
			2756	No sample										
			4156	64.0	65.3	1.3		96	ND					tr py
			4157	65.3	65.5	0.2		21	0.9					15% py
			4158	65.5	67.6	2.1		69	ND					tr py
			4159	67.6	67.8	0.2		21	0.1		Au oz/TON			5% py
			4160	67.8	68.8	1.0		192	0.2		0.006	0.006		tr py
			4161	70.0	70.4	0.4		82	0.1					QV
			4162	77.0	77.5	0.5		7	0.3					tr py in fractured grdrt
			4163	79.0	79.8	0.8		55	ND					QV
			2757	No sample										
			2758	No sample										
			2759	84.0	85.0	1.0		14	ND					grdrt
			2760	110.0	111.0	1.0		17	ND					grdrt
79.0	79.8		2761	No sample										
			2762	No sample										
			2763	No sample										
			2764	No sample										
			41654	133.5	134.5	1.0		34	ND					dyke

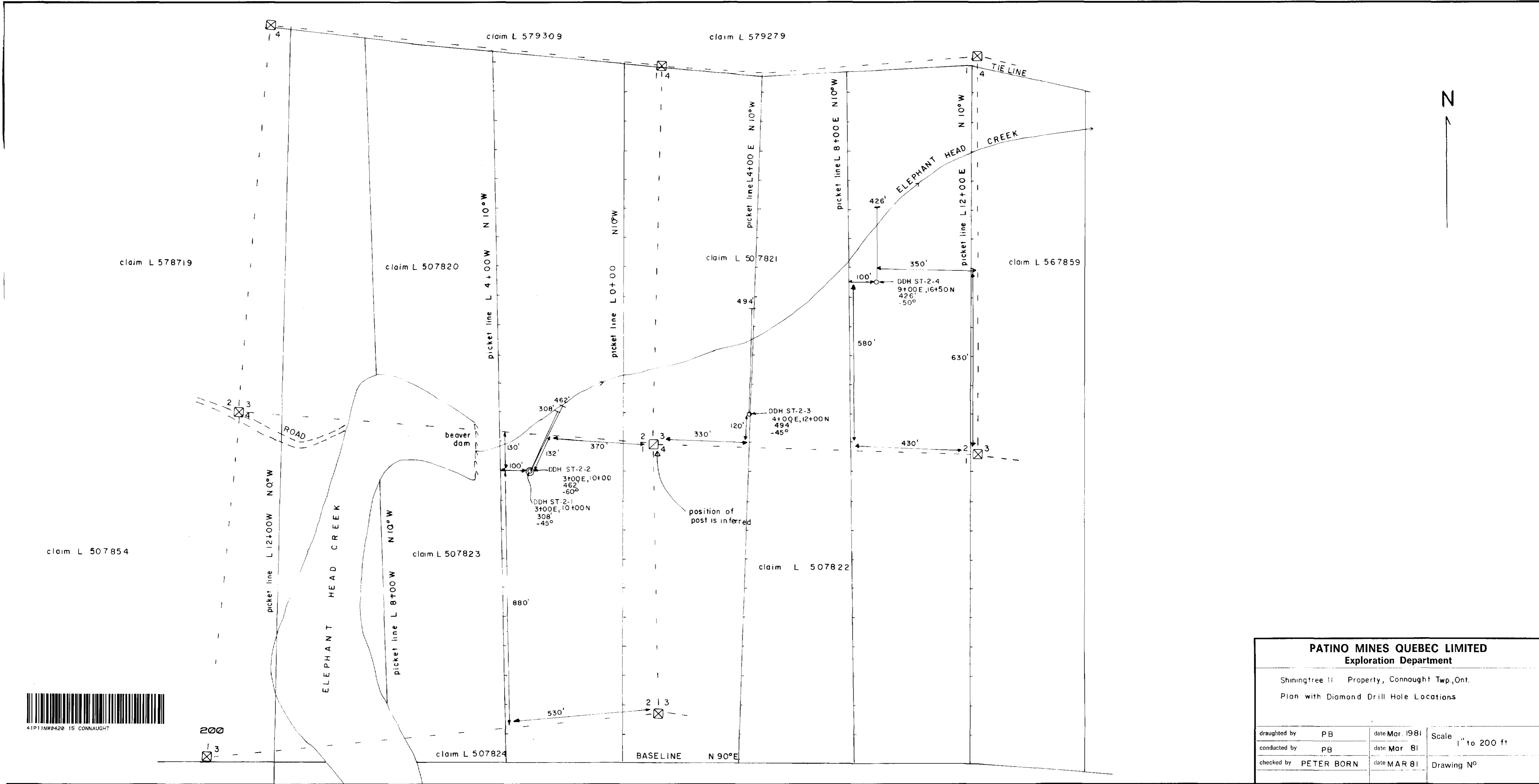
MINES (QUEBEC) LIMITED
 PATINO (QUEBEC) LIMITEE

PROPERTY

DIP TEST		LEVEL	ELEVATION	HOLE No. ST-2-1
FOOTAGE	ANGLE	LOCATION	BEARING	SHEET No. 3/3
	RECORDING	SECTION	LENGTH	LOGGED BY
	CORRECTED	LATITUDE	CORE SIZE	PURPOSE
		DEPARTURE	FINISHED	TOT. RECOVERY

FOOTAGE FROM TO	DESCRIPTION	GRADE ESTIMATE	SAMPLE NO.	FOOTAGE			ASSAYS					RECOVERY		
				FROM	TO	LENGTH	% CU	OZ AU	OZ AG	CU CUM. W X A	AU CUM. W X A	RUN	SHORT	
15.3 201.0	<p>GRANODIORITE (altered and rextited) fairly homogeneous granodiorite with altered creamy coloured plagioclase feldspars and hematite around these grains. Qtz - 40% - probably rextited look - qtz eyes - grains aren't particularly interlocking. Also 10 - 15% chlorite. Also trace pyrite - f.g. rextited in several places. This unit is similar or identical to 106 - 129 with similar feldspar alteration and hematization and qtz eyes - could indicate both units underwent shearing and rextited. The contact with the regular gndrt is gradual but distinct.</p>													
301 309	<p>GRANODIORITE med. grey colour, c.g. mass. and homogeneous indented to 4 - 79' qtz - 40% biotite - 5 - 10% chlorite 10% plag. feldsp - 40% little or no kspar which is distinct as such Alteration - moderate - with 10 - 15% sericite and chlorite - note in several places the rextited chlorite can get fairly c.g. and porphyroblastic in a few places. Traces pyrite in places - especially in calcite veins - 1" wide with 1% py - about 2% veining - also present poss. some very red Fe -carbonate Accessory is minor leucoxene - titanium - whitish colour locally 1%</p> <p>(304 - 309) similar to above but gndrt has more recrystallized light green chlorite - c.g. growing around mainly qtz eyes Colour pinkish - grey instead of greenish grey no sulphides present in the section.</p>													
309	End of Hole													

John Doe *Ruth Brown*



200

PATINO MINES QUEBEC LIMITED			
Exploration Department			
Shiningtree II Property, Connaught Twp., Ont.			
Plan with Diamond Drill Hole Locations			
draughted by	PB	date	Mar. 1981
conducted by	PB	date	Mar 81
checked by	PETER BORN	date	MAR 81
		Scale	1" to 200 ft
		Drawing No	