



41P11SE0120 20 FAWCETT

010

DIAMOND DRILLING

TOWNSHIP: FAWCETT

REPORT NO: 20

WORK PERFORMED FOR: DON HUMBY

RECORDED HOLDER: SAME AS ABOVE []

: OTHER []

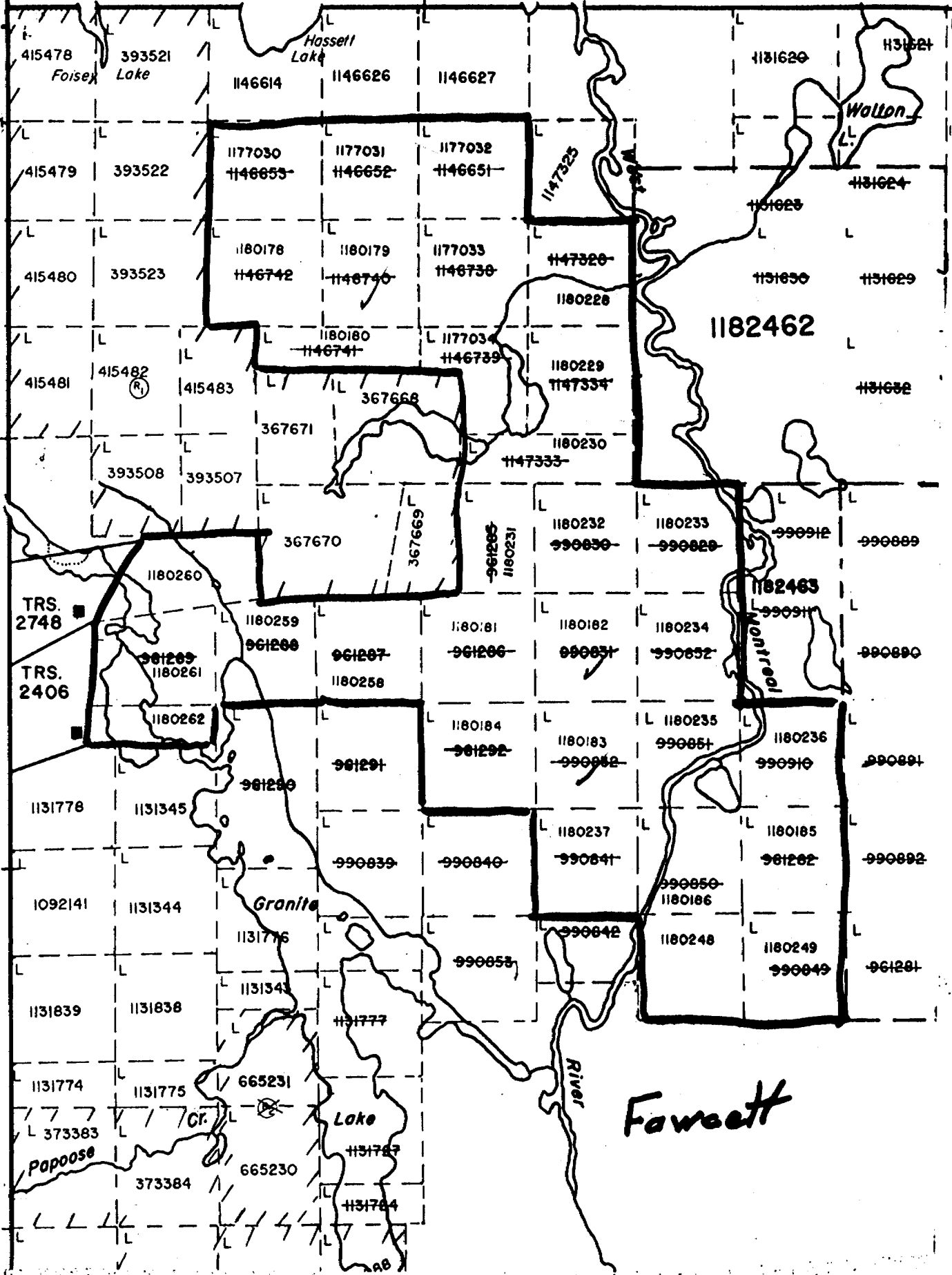
<u>CLAIM NO.</u>	<u>HOLE NO.</u>	<u>FOOTAGE</u>	<u>DATE</u>	<u>NOTE</u>
L1180179	NG-1	652'	AUG/91	(1)
L1180182 AND L1180183	<u>SG-1</u>	<u>550'</u>	AUG/91	(1)
	2	1202'		

NOTES: (1) W9180.05091

5 M

6 M

5 M



FORT KNOX GOLD RESOURCES INC.

SKETCH MAP OF

DIAMOND DRILL HOLE NG-1

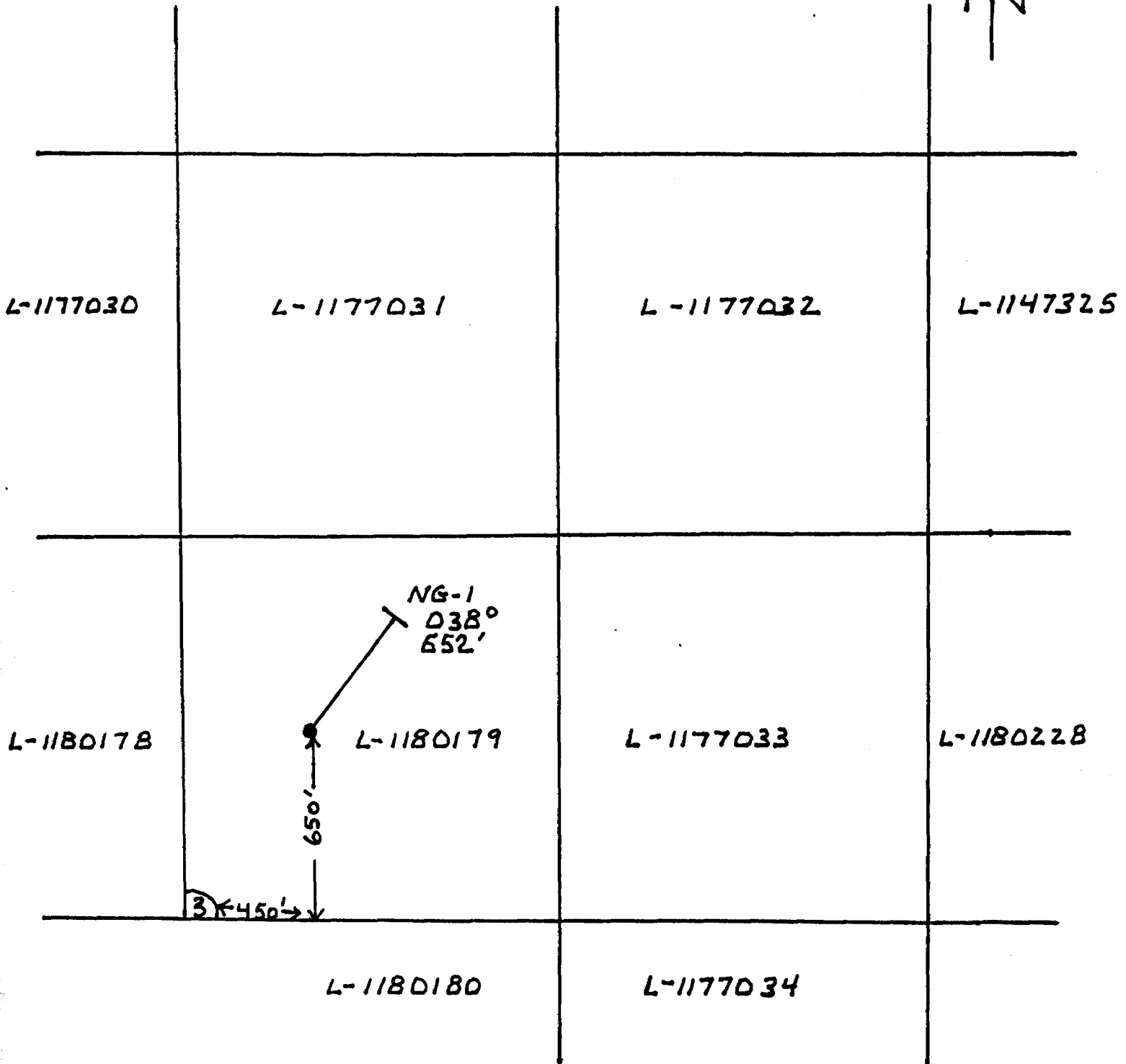
FAWCETT TOWNSHIP

LARDER LAKE MINING DIVISION

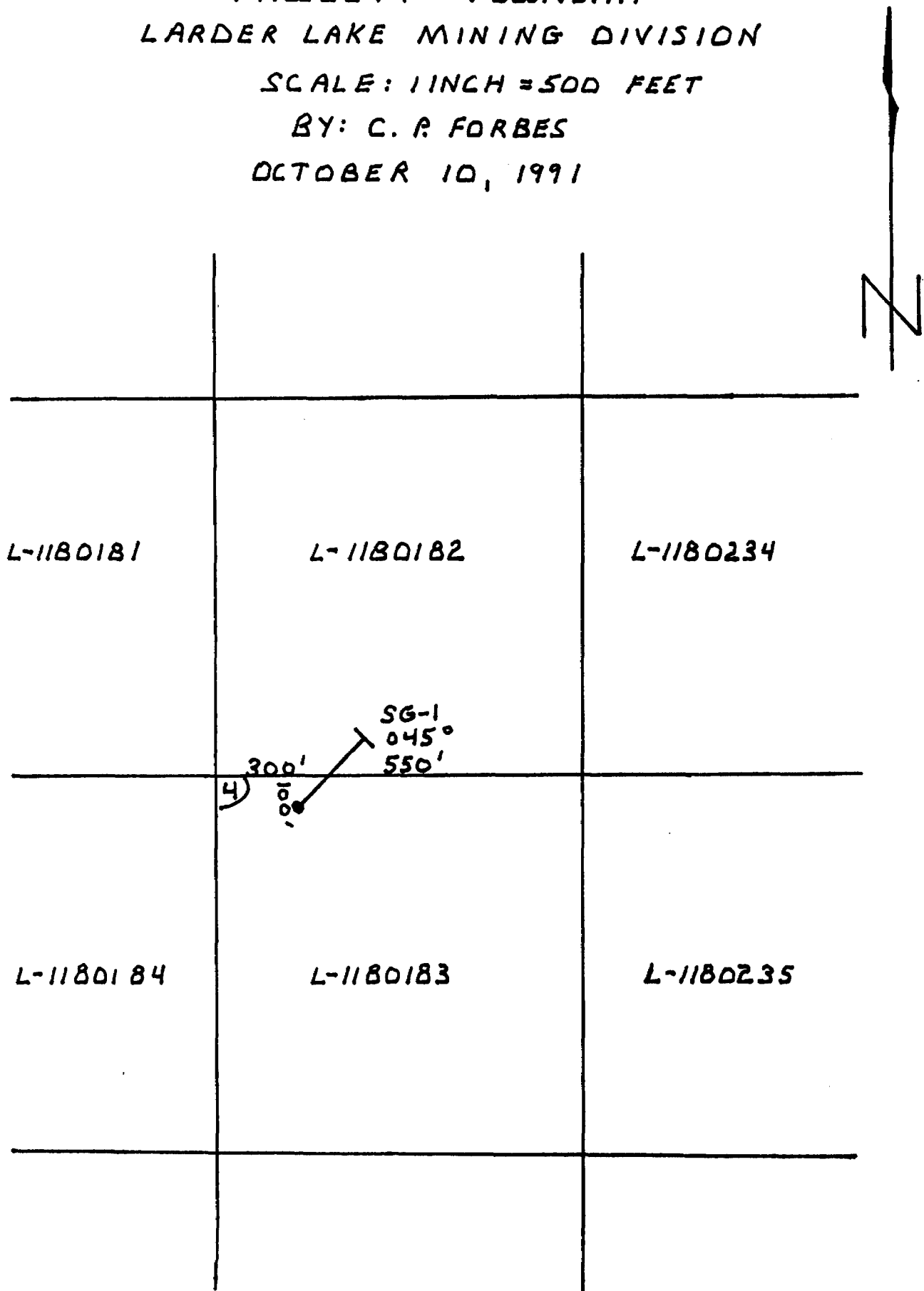
SCALE: 1 INCH = 500 FEET

BY: C. P. FORBES

SEPTEMBER 26, 1991



FORT KNOX GOLD RESOURCES INC.
SKETCH MAP OF
DIAMOND DRILL HOLE SG-1
FAWCETT TOWNSHIP
LARDER LAKE MINING DIVISION
SCALE: 1 INCH = 500 FEET
BY: C. R. FORBES
OCTOBER 10, 1991



COLLAR - 54.5°

OVERBURDEN

MAFIC
VOLCANIC

DIKE

DIORITE

FAULT ZONE

COARSE GRAINED
PORPHYRY DIKE

SULPHIDE ZONE
PO, PY, NI, CU, PT

COARSE GRAINED
PORPHYRY DIKE

DIABASE

-100

-200

-300

-400

550
50°

-450

DRILL SECTION
THROUGH HOLE SG-1
LOOKING N 45° E
SCALE: 1 INCH = 50 FEET
BY C.P. FORBES
OCT. 18, 1991

FORT KNOX GOLD RESOURCES INC.

CORE SIZE- 'A' Thin Wall
3 cm. (1.2 inches)

DATE- September 1, 1991

TOWNSHIP Fawcett
CLAIM L-1180179
COORD. L 0 + 75 E
0 + 02 N

AZIMUTH 038°
DIP -53°
LENGTH 652'
LOGGED BY A. D. Hunter

HOLE NO. NG-1
SHEET NO. 1
STARTED August 13, 1991
COMPLETED August 16, 1991

FOOTAGE

FROM TO

GENERAL DESCRIPTION

ACID TESTS
200' - 40°
400' - 34°
600' - 30°

0 10.0

Casing in organic muck in cedar swamp.

10.0 32.6

Argillite and tuffaceous argillite.
Pale to dark grey, thin bedded to laminated locally at 55° c.a. Distinct colour banding with grey tuff layers alternating with dark grey argillite. Typical bed thickness 1-10 cm. Lapilli size fragments 29-30 feet; some quartz-feldspar phytic. Mineralization
Fine grained sulphide (2-3%) as minute disseminations (py) and as thin threads and lenses (py + po + cpy) in plane of foliation. Locally thin pyrite laminations are interbedded with dark grey argillite. Pyrrhotite-rich section from 28-30 feet contains traces of cyp.

32.6 70.7

Gabbro
Medium green colour, coarse grained sub-ophitic texture. Locally well foliated at 45° c.a. Finer grained chilled margins over 2-3 feet. Barren milky quartz vein 48.7-51.5 with contacts at 35-40° c.a

70.7 108.0

Argillite and tuff.
Thin bedded to laminated at 50-60° c.a. from 77.8 feet. Dark charcoal grey, locally graphitic from 77.8-92.0. Pale grey to olive colour. 92.0-108. Milky to grey chert-sulphide and magnetite interbeds; 92.0-94.3, 95.6-98.4, 100.0-100.3.
Mineralization
Dark grey laminated argillite contains very fine disseminations and laminae of pyrite (2-5%). Locally 10% sulphides with conspicuous pyrrhotite and chalcopyrite (77.8-80.2). Cherty beds contains 25-30% pyrite and pyrrhotite and traces of chalcopyrite.
Thin bands of magnetite with finely disseminated pyrrhotite at 97.0 feet.

FORT KNOX GOLD RESOURCES INC.

CORE SIZE- 'A' Thin Wall
3 cm. (1.2 inches)

DATE- September 1 1991

TOWNSHIP Fawcett
CLAIM L-1180179
COORD. L 0 + 75 E
0 + 02 NAZIMUTH 038°
DIP -53°
LENGTH 652'
LOGGED BY A. D. HunterHOLE NO. NG-1
SHEET NO. 2
STARTED August 13, 1991
COMPLETED August 16, 1991

FOOTAGE

FROM TO

GENERAL DESCRIPTION

ACID TESTS 200' - 40°
400' - 34°
600' - 30°

108.0 151.0

Coarse fragmental; tuff lapilli-tuff. Very distinctive with quartz and feldspar grains and cherty fragments. Locally pale sericitic fragments are conspicuous. These are quartz phytic resembling surface outcrops to the north near the Big Zinc showing. Cherty, laminated grey ash-tuff and dark grey argillite 128.0-136.6. Foliated at 50-60° c.a. Bedding at 45-50° c.a.

Mineralization
Typically 2-5% disseminated fine grained pyrite and pyrrhotite with fine threads and bands of pyrite and sphalerite throughout. Coarse grained vuggy py + po between fragments locally, eg. 108-109 feet. Best sphalerite occurs between 112-113 (3%) and 128.3-128.7 (5-10%). Galena and chalcopryrite also conspicuous here. Fine grained ruby sphalerite noted between 108-149 feet. Massive pyrrhotite and pyrite with trace chalcopryrite from 147.6-148.1.

151.0 175.0

Argillite and tuffaceous argillite. Light grey to dark charcoal grey. Well bedded at 50-60° c.a. Pale yellow sericitic, quartz eye rich zone 165.3-166.4 feet.

Mineralization
Fine grained and blebby disseminated po, py. Trace opy. About 1-2% sulphide in general.

175.0 292.8

Gabbro
Coarse grained sill mapped on surface. Sheared, well foliated contacts at 50° c.a.

292.8 294.5

Cherty tuff, pale grey to yellow. Bedded at 40° c.a. Trace pyrite.

FORT KNOX GOLD RESOURCES INC.

CORE SIZE- 'A' Thin Wall
3 cm. (1.2 inches)

DATE- September 1991

TOWNSHIP Fawcett
CLAIM L-1180179
COORD. L 0 + 75 E
0 + 02 N

AZIMUTH 038°
DIP -53°
LENGTH 652'
LOGGED BY A. D. Hunter

HOLE NO. NG-1
SHEET NO. 3
STARTED August 13, 1991
COMPLETED August 16, 1991

D. Hunter

FOOTAGE

FROM	TO
294.5	301.4
301.4	313.0
313.0	334.7
334.7	336.7
336.7	338.2

GENERAL DESCRIPTION

Argillite and tuffaceous argillite similar to section from 151.0-175.0. Sulphides (py + po) are concentrated in dark argillaceous beds. Locally 3% sulphides.

Tuff and lapilli-tuff, pale yellow to grey. Comprised of waxy sericitic and grey cherty fragments. Very fine grained to dusty disseminated po and py. Bedded cherty layer with 1-2 mm. po beds at 313 feet.

Tuff and lapilli-tuff with minor chert and argillite beds. Reddish brown colour due to biotite alteration (?) About 3% fine disseminated po and minor coarser grained pyrite. Well foliated at 40-45° c.a.

Quartz-feldspar porphyry dike or sill. Medium grey-brown colour with distinctive blue quartz eyes up to 5 mm. About 20% phenocrysts.

Gabbro dike or sill. Well foliated at 45° c.a.

ACID TESTS
200' - 40°
400' - 34°
600' - 30°

FORT KNOX GOLD RESOURCES INC.		CORE SIZE- 'A' Thin Wall 3 cm. (1.2 inches)		DATE- September 17, 1991	
TOWNSHIP	<u>Fawcett</u>	AZIMUTH	<u>038°</u>	HOLE NO.	<u>NG-1</u>
CLAIM	<u>L-1180179</u>	DIP	<u>-53°</u>	SHEET NO.	<u>4</u>
COORD.	<u>L 0 + 75 E</u> <u>0 + 02 N</u>	LENGTH	<u>652'</u>	STARTED	<u>August 13, 1991</u>
		LOGGED BY	<u>A. D. Hunter</u>	COMPLETED	<u>August 16, 1991</u>
FOOTAGE				ACID TESTS	200' - 40°
FROM	TO			GENERAL DESCRIPTION	400' - 34°
338.2	367.2	<p>Tuff and lapilli-tuff. Local sericitic sections. Distinctive feature is blue quartz eyes throughout. Grey cherty exhalitive beds and fragments. Highly siliceous sulphide rich section begins at 355.6.</p> <p>355.6-367.2- Cherty, well mineralized section with massive sulphides. From 355.6-364.3 - Approximately 10-15% py and po as disseminations concentrated in bands. Local sintery quartz + py (semi-massive sulphide). Generally very siliceous.</p> <p>364.3-367.2- Massive pyrite and pyrrhotite with dark grey argillite and chert (sugary texture). Minor chalcopyrite associated mainly with pyrrhotite from 365.6 to 367.2.</p>			
367.2	393.0	<p>Tuff and argillite. Quartz-eye rich tuff and well bedded argillite and argillaceous tuff. Fine grained disseminated py and po with local banded sulphides in siliceous sections as from 370.6-374.2. Very thin laminated chert beds are conspicuous. Foliation and bedding 40-45° c.a.</p>			
393.0	396.9	<p>Gabbro Fine grained dark green. Pronounced reddish brown biotite alteration at both contacts.</p>			
396.9	420.7	<p>Tuff and lapilli-tuff Interbedded grey to pale yellow laminated tuff and massive tuff and lapilli-tuff. Conspicuous quartz and feldspar crystals throughout. Well foliated at 50-60° c.a. Local disseminations, threads and 1 cm. bands of pyrrhotite and pyrite. Traces of reddish sphalerite noted. Threads of sphalerite at 418.7 in brown biotite altered section.</p>			

FORT KNOX GOLD RESOURCES INC.		CORE SIZE- 'A' Thin Wall 3 cm. (1.2 inches)	DATE- September 17, 1991
TOWNSHIP	<u>Fawcett</u>	AZIMUTH	<u>038°</u>
CLAIM	<u>L-1180179</u>	DIP	<u>-53°</u>
COORD.	<u>L 0 + 75 E</u> <u>0 + 02 N</u>	LENGTH	<u>652'</u>
		LOGGED BY	<u>A. D. Hunter</u>
		HOLE NO.	<u>NG-1</u>
		SHEET NO.	<u>5</u>
		STARTED	<u>August 13, 1991</u>
		COMPLETED	<u>August 16, 1991</u>
FOOTAGE		GENERAL DESCRIPTION	ACID TESTS
FROM	TO		200' - 40° 400' - 34° 600' - 30°
420.7	518.3	Gabbro Texturally variable but generally medium to coarse grained sub-ophitic texture. Locally sheared and altered to a pale brown colour. Small internal fine grained dikes at 496-497.4, 501.2-502.6. Lower contact well foliated at about 50° c.a. over approximately four feet. Contacts with tuff 40-50° c.a. Inclusions of tuff 424.0-425.5.	
518.3	576.0	Tuff and lapilli-tuff. Foliation 50-60° c.a. Medium grey to pale yellow. Thin bedded to delicately laminated with black argillaceous layers conspicuous. Quartz eyes are present in the same lapilli tuff layers. Well developed slump breccia from 551.0-560.5 resembles that of an outcrop on surface almost above the drill hole! Fine grained disseminations and threads of pyrite in foliation planes. About 1-2% overall with locally 5-10% pyrite over 0.5-1 foot sections. Traces of reddish sphalerite noted such as at 550.2 feet.	
576.0	584.5	Argillite. Dark charcoal grey to black; hard, well indurated. Grey, thin tuff layers contain argillite fragments. Very well bedded to laminated at 55° c.a. Extremely fine grained muddy pyrite laminae and fine disseminations of pyrite and sphalerite (locally). At 579.5 sphalerite forms very fine disseminations and threads. Traces of galena and chalcopyrite were noted with the sphalerite here. Total sulphide 3-5%	
584.5	613.2	Tuff and lapilli-tuff. Very well bedded to thin laminated pale yellow sericitic and grey cherty layers. Quartz eyes are locally conspicuous. Thin argillaceous section from 606.9-608.6. Fine grained disseminated pyrite and traces of reddish sphalerite. Pyrite content 2-3% with up to 10-20% in laminated 'muddy' pyrite sections.	

FORT KNOX GOLD RESOURCES INC.		CORE SIZE- 'A' Thin Wall 3 cm. (1.2 inches)		DATE- September 17, 1991	
TOWNSHIP	<u>Fawcett</u>	AZIMUTH	<u>038°</u>	HOLE NO.	<u>NG-1</u>
CLAIM	<u>L-1180179</u>	DIP	<u>-53°</u>	SHEET NO.	<u>6</u>
COORD.	<u>L 0 + 75 E</u> <u>0 + 02 N</u>	LENGTH	<u>652'</u>	STARTED	<u>August 13, 1991</u>
		LOGGED BY	<u>A. D. Hunter</u>	COMPLETED	<u>August 16, 1991</u>
FOOTAGE				ACID TESTS	200' - 40° 400' - 34° 600' - 30°
FROM	TO	GENERAL DESCRIPTION			
613.2	618.0	Argillite as described from 576.0-584.5 feet. Chalcopyrite as coarse blebs at 615 feet. Traces of sphalerite also noted. Thin mafic dikes 615.0-615.6, 615.9-616.0 and 616.3-616.6 feet.			
618.0	633.8	Quartz-feldspar porphyry; fragmental appearance-possible flow. Medium grey brown colour with distinctive blue quartz eyes in the 1-3 mm. size range. Variation in the size and abundance of phenocrysts and argillite bed at 533.5 gives the unit an extrusive character. Trace fine grained disseminated pyrite.			
633.8	636.4	Argillite and tuff. Laminated at 50° c.a. Chalcopyrite noted at 634 feet. Contact with pillowed basalt unit below is obscure. Possibly altered and sheared basalt from 635-636.4 feet.			
636.4	652.0	Pillowed basalt. Very fine grained medium green. Tiny vesicles locally developed. Fracture controlled epidote alteration. Barren quartz-calcite stringer and veins occur throughout.			
		END OF HOLE -- 652 FEET.			
		CORE STORED AT INCO WAREHOUSE, COPPER CLIFF, ONTARIO			

X-RAY ASSAY LABORATORIES 12-SEP-91 REPORT ----- REF. 10807 PAGE 1

SAMPLE	NI %
122938	.04
122939	.39
122940	1.13
122941	.40
122942	.16
122943	.53
122938-R	SMP MISS
122939-R	.42
122940-R	1.15
122941-R	.20
122942-R	SMP MISS
122943-R	.49

Checks DATA SG-1
Cu/Ni Zme.



Swastika Laboratories

A Division of Assayers Corporation Ltd.

Assaying - Consulting - Representation

Established 1928

Geochemical Analysis Certificate

1W-3829-RG1

Company: FORT KNOX GOLD RES CORP.

Date: SEP-04-91

Project:

Copy 1. RR#2 MILLBROOK, ONTARIO L0A 1G0

Attn: D.HUNTER

2. 22 FRONT ST.W. TORONTO, ONTARIO M5J 1C4

3. FAX TO 416-869-0778

We hereby certify the following Geochemical Analysis of 15 CORE samples submitted AUG-28-91 by .

Sample Number	Au ppb	Ag ppm	As ppm	Co ppm	Cu ppm	Ni ppm	Zn ppm	Pt ppb	Pd ppb	Rh ppm
122929	Nil	0.1			202		51			
122930	17	0.2			861		58			
122931	Nil	0.1			321		47			
122932	Nil	0.1			168		43			
122933	Nil	0.1			402		77			
122934	Nil	0.1			297		49			
122935	14	4.5			646		171			
122936	Nil	1.8			461		165			
122937	Nil	1.6			1060		310			
122938	Nil	0.2			819	332	26	10	5	<
122939	75/99	0.4			3730	4060	50	100	55	<
122940	Nil	0.3		371	2960	12200	32	170	115	<
122941	Nil	0.2			1800	4110	35	70	50	<
122942	Nil	0.1			622	1640	41	50	10	<
122943	161/123	0.6			4520	5400	44	90	70	<

Certified by Donna Linder

FORT KNOX GOLD RESOURCES INC.

D.O.H. S.G.- 1 - CORE SAMPLES

SAMPLE NUMBER	FOOTAGE		LENGTH	ASSAYS GEOCHEMISTRY (p.p.m.)								
	FROM	TO		Cu	Ni	Zn	Au p.p.b.	Ag	Pt p.p.b.	Pd p.p.b.	Rh p.p.m.	
122929	26.5	28.2	1.7	202		51	Ni1	0.1				
122930	31.8	34.3	2.5	861		58	17	0.2				
122931	35.8	41.0	5.2	321		47	Ni1	0.1				
122932	41.0	46.0	5.0	168		43	Ni1	0.1				
122933	46.0	51.0	5.0	402		77	Ni1	0.1				
122934	51.0	54.0	3.0	297		49	Ni1	0.1				
122935	59.2	61.9	2.7	646		171	14	4.5				
122936	62.8	66.6	3.8	461		165	Ni1	1.8				
122937	71.7	76.6	4.9	1060		310	Ni1	1.6				
122938	284.1	286.2	2.1	819	332	26	Ni1	0.2	10	5	< 5	
122939	286.2	288.8	2.6	3730	4060	50	75/99	0.4	100	55	< 5	
122940	288.8	293.0	4.2	2960	1.22%	32	Ni1	0.3	170	115	< 5	
122941	293.0	296.3	3.3	1800	4100	35	Ni1	0.2	70	50	< 5	
122942	298.5	300.1	1.6	622	1640	41	Ni1	0.1	50	10	< 5	
122943	300.1	304.3	4.2	4500	5400	44	161/ 123	0.6	90	70	< 5	

FORT KNOX GOLD RESOURCES INC.

3 cm. (1.2 inches)
CORE SIZE-"A" Thin Wall

DATE- Sept. 17, 1991

TOWNSHIP Fawcett
CLAIM L-1180182 & L-1180183
COORD. L 1 + 00 SE
0 + 60 NE

AZIMUTH 045°
DIP 54.5°
LENGTH 550'
LOGGED BY A. D. Hunter

HOLE NO. SG-1
SHEET NO. 1
STARTED August 18, 1991
COMPLETED August 21, 1991

FOOTAGE

ACID TESTS 200' - 53°
550' - 50°

FROM TO

GENERAL DESCRIPTION

0 19.5

Casing in sand, a few boulders

19.5 81.3

Mafic volcanic
Pale grey-green to dark green flow with local pillow selvages and hyaloclastite. Bedded pyritic sediment in pillow interstices. Mottled appearances due to variable chlorite content and grain size of abundant chalky feldspar grains. Only very weakly magnetic. Stringer-type pyrite with minor chalcopyrite is salient. Sulphide occurs as irregular patches, threads and seams up to 1 cm. across. Overall 1% with up to 5-10% over 0.5 feet. Orange banded felsite dikes at 55.1-55.8, 58.9-59.2, 61.9-62.8.

81.3 82.3

Banded siliceous section with minor sulphide. Possible tuff? One 2 cm. band contains traces of pyrite and galena and chalcopyrite. Foliated 50° c.a.

82.3 83.8

Massive feldspar-pyritic dike of intermediate composition. Foliation 55° c.a.

83.8 84.0

Felsic dike, cherty and banded with feldspar phenocrysts to 3 mm. Banding and contacts at 55° c.a.

84.0 117.5

Diorite, fine to medium grained with local patches and veins of coarse pegmatitic feldspar, bluish quartz, amphibole and magnetite. From 105-115.5 about 10% of the section is pegmatitic. This is a composite intrusion. Very magnetite rich with up to 2-3% as fine disseminations and coarse irregular grains in pegmatite.

FORT KNOX GOLD RESOURCES INC.

CORE SIZE- 3 cm. (1.2 inches)
"A" Thin Wall

DATE- Sept. 17, 1991

TOWNSHIP Fawcett
CLAIM L-1180182 & L-1180183
COORD. L 1 + 00 SE
0 + 60 NEAZIMUTH 045°
DIP 54.5°
LENGTH 550'
LOGGED BY A. D. Hunter
*D. Hunter*HOLE NO. SG-1
SHEET NO. 2
STARTED August 18, 1991
COMPLETED August 21, 1991

FOOTAGE

ACID TESTS 200' - 53°
550' - 50°

FROM TO

GENERAL DESCRIPTION

117.5 120.4

Fault Zone
Sheared with yellow green sericite and quartz-carbonate stringers. Rusty altered "water vein" at 118.7; hole makes water from this fractured section. Foliated and sericitic at 70° c.a.

120.4 284.1

Coarse grained massive porphyritic dike of intermediate composition. Large 1 cm. blocky subhedral chalky feldspar crystals and crystal aggregates. Up to 5% irregular bluish coloured opalescent quartz grains. Biotite and amphibole 60%, feldspar 35%, quartz 5%. Essentially non-magnetic. Gray fine grained dikes 171.8-172.3 and 189.2-190.8 feet. Dike contacts at 30° and 80° to c.a.

284.1 304.3

Sulphide zone.
Gradational chilled contact against intrusive unit above. Zone is comprised of a composite dike of diorite resembling that from 84.0-117.5 and more mafic material with blocky altered pyroxene (?) Also fine grained mafic dike material.
Mineralization
Pyrrhotite, chalcopyrite and pyrite occur together forming magmatic net textured with 25% sulphide locally. Chalcopyrite occurs also as fine disseminations and fracture fillings in diorite adjacent to the net textured zones of mineralization.
284.1-286.2- Diorite with minor fracture filling chalcopyrite and pyrite. Very fine disseminated chalcopyrite also noted.
286.2-288.8- Diorite with 5% sulphides, predominantly pyrrhotite but also fracture filling chalcopyrite. Irregular mafic zones with coarse blocky pyroxene contain the highest sulphide with up to 10% over 0.5 feet. Salient feature is blue opalescent quartz.

FORT KNOX GOLD RESOURCES INC.		CORE SIZE- 3 cm. (1.2 inches) "A" Thin Wall	DATE- Sept. 17, 1991
TOWNSHIP	Fawcett	AZIMUTH	045°
CLAIM	L-1180182 & L-1180183	DIP	54.5°
COORD.	L 1 + 00 SE	LENGTH	550'
	0 + 60 NW	LOGGED BY	A. D. Hunter <i>D. Hunter</i>
FOOTAGE			ACID TESTS 200' - 53° 550' - 50°
FROM	TO	GENERAL DESCRIPTION	
284.1	304.3	Continued 288.8-293.0- Similar to 286.2-288.8 but more mafic with about 15% total sulphides. 293.0-296.3- Dark green diorite with high quartz content and short 0.3-0.5 foot mineralized sections. Low sulphide overall. 296.3-298.5- Fine grained mafic dike. 298.5-300.1- Diorite dike with blocky mafic phenocrysts. 300.1-304.3- Diorite resembling previous sections as from 286.2-288.8 and 288.8-293.0 feet. Fracture fillings of solid chalcopyrite 1-2 mm. wide locally. Pale reddish brown garnet with epidote at 304.1-304.3 feet. The sulphide mineralization occurs in an hybrid intrusive zone within the coarse grained granodiorite which appears to post date the mineralized dikes.	
304.3	474.9	Coarse grained porphyry as logged from 120.4-284.1 feet. Chilled upper contact against mineralized zone. Banded cherty felsite dike at 349.4-350.8. Diabase dike 420-421 feet with sheared and altered contact zone from 418.5 to 422 feet. Contacts at 55° c.a. with minor quartz veining. Trace pyrite in quartz at 420 feet. Pale green altered section 432.4-442 feet containing barren bull quartz and sericite 436.4-436.6 feet.	
474.9	550	Diabase with good chilled contact against the porphyritic intrusion. Medium grained. Strongly magnetic. END OF HOLE - 550 FEET. CORE STORED AT INCO WAREHOUSE, COPPER CLIFF, ONTARIO	

ANALYTICAL SERVICES

410000070:8 3/ 3



Swastika Laboratories

A Division of Assayers Corporation Ltd.

Assaying - Consulting - Representation

Established 1928

Page 2 of 2

1W-3760-RG1

NG-1

Geochemical Analysis Certificate

Company: **FORT KNOX GOLD RESOURCES CORP.**
Project:
Attn: **D.HUMBY**

Date: **AUG-26-91**
Copy 1. 22 FRONT ST. W. TORONTO, ONTARIO M5J 1C4
2. FAX TO 416-269-0778
3. HOLD COPY

We hereby certify the following Geochemical Analysis of 32
CORE AND ROD GRABS samples submitted AUG-20-91 by D.HUNTER.

Sample Number	Au ppb	Ag ppm	Cu ppm	Pb ppm	Zn ppm
122927	1.7	21/34	0.9	169	46
122928	4.6	Nil	0.3	61	239

Certified by Donna Gardner



Swastika Laboratories

A Division of Assayers Corporation Ltd.

Assaying - Consulting - Representation

Established 1928

Page 1 of 2

1W-3760-RG1

NG-1

Geochemical Analysis Certificate

Company: FORT KNOX GOLD RESOURCES CORP.

Project:

Attn: D.HUMBY

Date: AUG-26-91

- Copy 1. 22 FRONT ST.W, TORONTO, ONTARIO M5E 1C4
- 2. FAX TO 416-869-0778
- 3. HOLD COPY

We hereby certify the following Geochemical Analysis of 32 CORE AND ROD GRABS samples submitted AUG-20-91 by D.HUNTER.

Sample Number		Au ppb	Ag ppm	Cu ppm	Pb ppm	Zn ppm
7443		Nil	0.2	89	66	202
7444		14	2.7	10000	952	257
7445		Nil	0.1	149	23	31
7446		5	0.9	130		4330
122901	2.4	10	0.4	493		66
122902	3.5	31/17	0.5	422		969
122903	6.1	Nil	0.9	619		2000
122904	2.3	Nil	0.4	172		721
122905	2.8	Nil	0.2	144		214
122906	3.0	Nil	0.9	214		1420
122907	2.0	Nil	1.1	208	52	8460
122908	5.0	Nil	0.7	93		1090
122909	2.0	5	1.8	558	3010	13100
122910	4.0	Nil	1.6	348		2130
122911	36.3	31	0.6	234	22	833
122912	146	Nil	0.5	160	18	459
122913	3.7	10	0.8	443	32	461
122914	5.0	17	0.3	250	4	249
122915	4.8	Nil	0.1	113	5	203
122916	3.7	Nil	0.2	68		113
122917	4.2	Nil	0.1	101	5	175
122918	4.1	24/14	0.1	59		90
122919	1.3	Nil	0.4	228		496
122920	1.6	Nil	0.5	294	17	1090
122921	3.6	Nil	0.1	53		87
122922	5.0	7	1.6	441	946	2080
122923	3.5	Nil	1.2	371	85	433
122924	4.5	Nil	0.1	42	29	123
122925	2.8	21	0.7	143	32	61
122926	4.1	Nil	0.3	109		465

Certified by Donna Gardner

FORT KNOX GOLD RESOURCES INC.

D.O.H. N.G. - 1 - CORE SAMPLES

SAMPLE NUMBER	FOOTAGE		LENGTH	ASSAYS GEOCHEMISTRY (p.p.m.)				
	FROM	TO		Au p.p.b.	Ag	Cu	Pb	Zn
122901	77.8	80.2	2.4	10	0.4	493		66
122902	81.5	85.0	3.5	24	0.5	422		969
122903	85.0	91.1	6.1	Nil	0.9	619		2000
122904	92.0	94.3	2.3	Nil	0.4	172		721
122905	95.6	98.4	2.8	Nil	0.2	144		214
122906	108.0	111.0	3.0	Nil	0.9	214		1420
122907	111.0	113.0	2.0	Nil	1.1	208	52	8460
122908	121.0	126.0	5.0	Nil	0.7	93		1090
122909	127.5	129.5	2.0	5	1.8	558	3010	13100
122910	130.3	134.3	4.0	Nil	1.6	348		2130
122911	136.0	141.0	5.0	31	0.6	234	22	835
122912	141.0	146.0	5.0	Nil	0.5	160	18	459
122913	145.0	149.7	3.7	10	0.8	443	32	461
122914	166.4	171.4	5.0	17	0.3	250	4	249
122915	319.1	323.9	4.8	Nil	0.1	113	5	203
122916	342.3	346.0	3.7	Nil	0.2	68		113
122917	355.6	359.8	4.2	Nil	0.1	101	5	175
122918	360.2	364.3	4.1	19	0.1	55		90
122919	364.3	365.6	1.3	Nil	0.4	228		496
122920	365.6	367.2	1.6	Nil	0.5	294	17	1090
122921	370.6	374.2	3.6	Nil	0.1	53		87
122922	576.0	581.0	5.0	7	1.6	441	946	2080
122923	581.0	584.5	3.5	Nil	1.2	371	85	433
122924	584.5	589.0	4.5	Nil	0.1	42	29	123
122925	600.0	602.8	2.8	21	0.7	143	32	61
122926	602.8	606.9	4.1	Nil	0.3	109		465
122927	606.9	608.6	1.7	28	0.9	169	46	67
122928	608.6	613.2	4.6	Nil	0.3	61		239

COLLAR -53°

OVERBURDEN

ARGILLITE

GABBRO

ARGILLITE + TUFF
PY, CU, ZN, AG

LAPILLI-TUFF
PY, CU, ZN, AG

ARGILLITE

GABBRO

CHERTY TUFF

LAPILLI TUFF

ARGILLITE

DIKE

GABBRO

TUFF + ARGILLITE
PY, CU, ZN, AG

GABBRO

TUFF

GABBRO

LAPILLI TUFF

ARGILLITE
PY, CU, ZN, AG

LAPILLI TUFF

PORPHYRY
BASALT

652'

30° 375'

DRILL SECTION
THROUGH HOLE NG-1
LOOKING N 38° E
SCALE : 1 INCH = 50 FEET
BY : C.P. FORBES
OCT. 18, 1991

100 -

200 -

300 -

Report of Work Conducted After Recording Claim
 Mining Act

DOCUMENT No.
 W9180-05091

Personal information collected on this form is obtained under the authority of the Mining Act. This collection should be directed to the Provincial Manager, Mining Lands, Mining Division, Sudbury, Ontario, P3E 6A5, telephone (705) 670-7264.



900

- Instructions:**
- Please type or print and submit in duplicate.
 - Refer to the Mining Act and Regulations for requirements of mining assessment work or consult the Mining Recorder.
 - A separate copy of this form must be completed for each Work Group.
 - Technical reports and maps must accompany this form in duplicate.
 - A sketch, showing the claims the work is assigned to, must accompany this form.

Recorded Holder(s) DON HUMBY		Client No. 146573
Address 22 FRONT ST. WEST - LOWER LEVEL - TORONTO - ONT. M5T 1C4		Telephone No. 416-869-0358
Mining Division LARDER LAKE	Township/Area FAWCETT TOWNSHIP	M or G Plan No. G-971
Dates Work Performed From: AUGUST 8, 1991	To: OCT. 18/91	3 INCLUDING MAPS SECTIONS, TYPING ETC.

Work Performed (Check One Work Group Only)

Work Group	Type
<input type="checkbox"/> Geotechnical Survey	
<input checked="" type="checkbox"/> Physical Work, Including Drilling	DIAMOND DRILLING & ASSAYS
<input type="checkbox"/> Rehabilitation	
<input type="checkbox"/> Other Authorized Work	
<input type="checkbox"/> Assays	
<input type="checkbox"/> Assignment from Reserve	

ONTARIO GEOLOGICAL SURVEY
 GIS - ASSESSMENT FILES
 MAR 31 1992
RECEIVED

Total Assessment Work Claimed on the Attached Statement of Costs \$ ~~27,525.00~~ **27527.** *Rounded Up.*

Note: The Minister may reject for assessment work credit all or part of the assessment work submitted if the recorded holder cannot verify expenditures claimed in the statement of costs within 30 days of a request for verification.

Persons and Survey Company Who Performed the Work (Give Name and Address of Author of Report)

Name	Address
DOUG HUNTER - GEOLOGIST	R.R. #2 MILLBROOK ONT. L0A 1G0
LARRY SALO - DRILL CONTRACTOR	GENERAL DELIVERY - CONNAUGHT ONT. P0N 1A0
WAYNE WHYMARK - FIELD SUPERVISOR	54 BRADLEY BLVD. HAMPTON ONT. R.R. #1 L0B 1T0
CARL FORBES - LABOURER	70 Mc CAMUS AVE. KIRKLAND LAKE ONT. P2N 2J9

(attach a schedule if necessary)

Certification of Beneficial Interest * See Note No. 1 on reverse side

I certify that at the time the work was performed, the claims covered in this work report were recorded in the current holder's name or held under a beneficial interest by the current recorded holder.	Date OCT. 18/91	Recorded Holder or Agent (Signature) <i>Carl P. Forbes</i>
--	---------------------------	---

Certification of Work Report

I certify that I have a personal knowledge of the facts set forth in this Work report, having performed the work or witnessed same during and/or after its completion and annexed report is true.		
Name and Address of Person Certifying CARL P. FORBES 70 Mc CAMUS AVE KIRKLAND LAKE ONT P2N2J9		
Telephone No. 705-567-5145	Date OCT. 18/91	Certified By (Signature) <i>Carl P. Forbes</i>

For Office Use Only

Total Value Cr. Recorded Recorded \$24583. Banded \$2944.	Date Recorded October 12/91	Mining Recorder <i>[Signature]</i>	Received Stamp RECEIVED OCT 18 PM 3 13 LARDER LAKE MINING DIVISION
	Deemed Approval Date	Date Approved	
	Date Notice for Amendments Sent		



Ministry of
Northern Development
and Mines

Ontario

Ministère du
Développement du Nord
et des mines

**Statement of Costs
for Assessment Credit**

**État des coûts aux fins
du crédit d'évaluation**

Mining Act/Loi sur les mines

Transaction No./N° de transaction
19180-0000

Personal information collected on this form is obtained under the authority of the Mining Act. This information will be used to maintain a record and ongoing status of the mining claim(s). Questions about this collection should be directed to the Provincial Manager, Minings Lands, Ministry of Northern Development and Mines, 4th Floor, 159 Cedar Street, Sudbury, Ontario P3E 6A5, telephone (705) 670-7264.

Les renseignements personnels contenus dans la présente formule sont recueillis en vertu de la Loi sur les mines et serviront à tenir à jour un registre des concessions minières. Adresser toute question sur la collecte de ces renseignements au chef provincial des terrains miniers, ministère du Développement du Nord et des Mines, 159, rue Cedar, 4^e étage, Sudbury (Ontario) P3E 6A5, téléphone (705) 670-7264.

1. Direct Costs/Coûts directs

Type	Description	Amount Montant	Totals Total global
Wages Salaires	Labour Main-d'oeuvre	1000.00	1000.00
	Field Supervision Supervision sur le terrain	1000.00	1000.00
Contractor's and Consultant's Fees Droits de l'entrepreneur et de l'expert- conseil	Type DIAMOND DRILL	16760.69	
	GEOLOGIST	4494.00	
		21254.69	21254.69
Supplies Used Fournitures utilisées	Type ASSAYS	985.52	
		985.52	985.52
Equipment Rental Location de matériel	Type		
Total Direct Costs Total des coûts directs			24240.21

2. Indirect Costs/Coûts indirects

** Note: When claiming Rehabilitation work indirect costs are not allowable as assessment work.
Pour le remboursement des travaux de réhabilitation, les coûts indirects ne sont pas admissibles en tant que travaux d'évaluation.

Type	Description	Amount Montant	Totals Total global
Transportation Transport	Type VEHICLE RENTAL	524.84	
		524.84	524.84
Food and Lodging Nourriture et hébergement	CAMP AT SHININGTREE	2460.03	
		2460.03	2460.03
Mobilization and Demobilization Mobilisation et démobilisation	DIAMOND DRILL	300.00	
		300.00	300.00
Sub Total of Indirect Costs Total partiel des coûts indirects			3284.87
Amount Allowable (not greater than 20% of Direct Costs) Montant admissible (n'excédant pas 20 % des coûts directs)			3284.87
Total Value of Assessment Credit (Total of Direct and Allowable indirect costs)			27525.00
Valeur totale du crédit d'évaluation (Total des coûts directs et indirects admissibles)			27525.00

Note: The recorded holder will be required to verify expenditures claimed in this statement of costs within 30 days of a request for verification. If verification is not made, the Minister may reject for assessment work all or part of the assessment work submitted.

Note: Le titulaire enregistré sera tenu de vérifier les dépenses demandées dans le présent état des coûts dans les 30 jours suivant une demande à cet effet. Si la vérification n'est pas effectuée, le ministre peut rejeter tout ou une partie des travaux d'évaluation présentés.

Filing Discounts

1. Work filed within two years of completion is claimed at 100% of the above Total Value of Assessment Credit.
2. Work filed three, four or five years after completion is claimed at 50% of the above Total Value of Assessment Credit. See calculations below:

Total Value of Assessment Credit	Total Assessment Claimed
	× 0.50 =

Remises pour dépôt

1. Les travaux déposés dans les deux ans suivant leur achèvement sont remboursés à 100 % de la valeur totale susmentionnée du crédit d'évaluation.
2. Les travaux déposés trois, quatre ou cinq ans après leur achèvement sont remboursés à 50 % de la valeur totale du crédit d'évaluation susmentionné. Voir les calculs ci-dessous.

Valeur totale du crédit d'évaluation	Evaluation totale demandée
	× 0,50 =

Certification Verifying Statement of Costs

I hereby certify:
that the amounts shown are as accurate as possible and these costs were incurred while conducting assessment work on the lands shown on the accompanying Report of Work form.

that as AGENT I am authorized
(Recorded Holder, Agent, Position in Company)

to make this certification

Attestation de l'état des coûts

J'atteste par la présente :
que les montants indiqués sont le plus exact possible et que ces dépenses ont été engagées pour effectuer les travaux d'évaluation sur les terrains indiqués dans la formule de rapport de travail ci-joint.

Et qu'à titre de _____ je suis autorisé
(titulaire enregistré, représentant, poste occupé dans la compagnie)

à faire cette attestation.

Signature Carl P. Forbes Date Oct. 18/91



X-RAY ASSAY LABORATORIES

A DIVISION OF SGS SUPERVISION SERVICES INC.

1885 LESLIE STREET • DON MILLS, ONTARIO M3B 3J4 • CANADA
TEL: (416)445-5755 TELEX: 06-986947 FAX: (416)445-4152

FACSIMILE COVER LETTER

OUR 24 HOUR NUMBER: (416) 445-4152

PLEASE DELIVER THE FOLLOWING TO:

NAME: WAYNE WHYMARK

FIRM: FORT KNOX GOLD RESOURCES INC.

FAX NO. 416-869-0778

FROM:

DEPT.: DATACENTER

TOTAL NUMBER OF PAGES INCLUDING COVER LETTER: 2

PARTIAL REPORT: YES NO

DATE: 12-SEP-91 PROJECT #: _____

IF YOU DO NOT RECEIVE ALL PAGES, PLEASE CALL (416) 445-5755

COMMENTS (IF ANY):

EARTHUNT RESOURCES INC.

R.R. 2, MILLBROOK
ONTARIO L0A 1G0

(705) 932-3130

August 26, 1991

In Account With:

Fort Knox Gold Resources Corporation,
22 Front Street West, Lower Level,
Toronto, Ontario M5J 1C4

Attention: D. Humby

For professional services rendered:

Fawcett Township base metal project;
Diamond drill core logging and geological mapping.

August 8 (0.5 day), 9 - 19 incl. (11 days), 20 (0.5 day),
23- 24 incl. (2 days).

Total of 14 days at \$300/day \$4,200.00

Expenses:

Travel - vehicle rental
1,635 km at \$0.30/km 490.50

1 meal \$18.23
less G.S.T. - 1.11

Expenses charged \$17.12 17.12

G.S.T. (vehicle charge \$34.34
+ services \$294.00) 328.34

Total Amount Invoiced \$5,035.96

G.S.T. # 101542231

Approved by:
[Signature]
28th Aug. 1991

PAID BY CHEQUE No. 525
DATE... August 28/91

Tel: (416) 686-2195

DEPARTMENT

WAYNE WHYMARK 54 BRADLEY BLVD. R.R.#1 HAMPTON ONT. L0B 1S0

TO

ATT: DON HUMBY
Fort Knox Gold Resources Inc.
22 FRONT ST. WEST LOWER LEVEL
TORONTO, ONT. M5J 1C4

DATE

SEPT. 16th 1991.

SUBJECT

MESSAGE

Expenses.

Telephone Charges. ¹⁹⁹¹ MAY/June, June/July, July/Aug. — 415.51

Misc. Out of Pocket Expenses. — 71.22

Expenses Siting Tree Drill Program — 1,870.00

2,356.73

Minus Expense Advance < 2,000.00 >

Total. 356.73

Respectfully Submitted,
[Signature]

PAID BY CHEQUE No. 532
DATE. Sept. 17/91

USE LOWER PORTION FOR REPLY
L13-99913 (L13-RTM8) GRAND & TOY

REPLY FROM

DATE

OUR GST #R100842582 (ALL CHARGES INCLUDE GST WHERE GST NOT SHOWN SEPARATELY)
BALANCE DUE

I agree that my liability for this bill is not waived and agree to be held personally liable in the event that the indicated person, company or association fails to pay for any part or the full amount of these charges. I also agree that all charges contained in this account are correct and any disputes or requests for copies of charges must be made within five days after my departure.

.00

August 20/91

To: Fort Knox Gold Resources Inc
Attn: D. Humby.

FROM: J. Salo
re: Diamond Drilling.

TOTAL of 2 pages (including cover).

Mr Humby:

Thank you for sending the
advance which arrived Aug 10/91.
I am sending you the invoice
for the first hole via this fax
transmission and you'll receive
the original in the post. Sorry
that everything is hand written
but we don't have a typewriter
in the bush.

Joe-Anne K Salo
for
Harry J Salo

Larry Salo
General Delivery
Donnaught Ontario
PON-1A0

Fort Knox Gold Resources Inc.
22 Front Street West
Lower Level
Toronto, Ontario
M5J-1C4.

INVOICE 19.08.91

Re: Diamond Drilling - Sawcett Township

2 days mobilization @ \$150 ^{xx}	=	300 ^{xx}
gas for 5 truck trips to mobilize (Timmins to Shiring Tree)	=	388 ⁶⁹

HOLE NG-1

1-rod shoe - left in hole at request	148 ^{xx}
10'-BDBGM casing left in hole at request	150 ^{xx}
hole depth 0-652 feet @ 13 ^{xx} per foot	8476 ^{xx}

Total	9462.69
less advance	1000.00

Balance due 8462.69

Approved by:
[Signature]
Aug 20th 1991.

Fax No. (416) 869-0778

Tel: (416) 869-0358

PH. DON HUMBY.

[Signature]

PAID BY CHEQUE No. 523
DATE. Aug. 21/91

22. August 1991
Larry Salo
General Delivery
Connaught Ontario
PON-1A0

Fort Knox Resources Inc.
22 Front Street West.
Lower level
Toronto Ontario M5J-1C4.

INVOICE 22.08.91

Re: Diamond Drilling - Fawcett Township

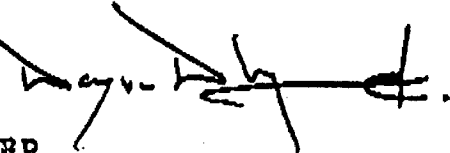
HOLE SG-1-91.

1 - rod shoe left in hole.
20' BOBM casing left in hole.
hole depth 0-550' feet @ \$13-

\$ 148 -
\$ 300 -
\$ 7150. -

\$ 7598 -

Balance \$ 7,598⁰⁰

Approved by, 
Aug. 23RD 1991

PAID BY CHEQUE No. 524
DATE..... August 23/91

CHEQUE REQUISITION

COMPANY: FORT KNOX GOLD RESOURCES INC.

PAYEE: W. Whymark

DESCRIPTION	A/C NO.	DR	CR
August fee		2,000	
G.S.T		140. ⁰⁰	
	TOTAL		

\$1000.00 OF
W. WHYMARK'S
AUG. /91 WAGES
APPLIED TO
DRILL PROGRAM

CHEQUE NO.: 528

DATE: August 28/91

CHEQUE AMOUNT: 2,140.00

CARL P. FORBES

PROSPECTING & EXPLORATION MANAGEMENT
70 McCamus Avenue
Kirkland Lake, Ontario
P2N 2J9

Phone: [705] 567-5145

FAX: [705] 567-5

August 23, 1991

Fort Knox Gold Resources Inc.
22 Front Street West
Lower Level
Toronto, Ontario
M5J 1C4

Attention: Don Humby

Dear Sir:

Re: Fawcett Township prospecting and diamond drilling
August 9th to 16, 1991

Out of Pocket Expenses incurred as follows:

gas	\$ 83.00
coolers and ice packs	95.69
groceries	<u>323.00</u>
TOTAL	\$501.69

As well, I also bill five days prospecting time at
\$200.00 per day for a total invoice of \$1,501.69

Respectfully Submitted by,

Carl P. Forbes

Carl P. Forbes

CPF:jef

encl. 1

Approved by:
[Signature]
12th Aug. 1991



X-Ray Assay Laboratories
A Division of SGS Supervision Services Inc.

1885 Leslie St.
Don Mills
Ontario M3B 3J4
Canada
Tel: (416) 445-5755
Fax: (416) 445-4152
Telex: 09-986947

Invoice To:
FORT KNOX GOLD RESOURCES INC.
ATTN: WAYNE WHYMARK
22 FRONT STREET WEST (LOWER LEVEL)
TORONTO, ONTARIO
M5J 1C4

Invoice Date: 12-Sep-91
Work Order No.: 10807
Date Submitted: 9-Sep-91
Report No.: 16638
Customer No.: 2178/NONE
Your P.O. No.:
Your Project No.:

Submitted To:
FORT KNOX GOLD RESOURCES INC.
ATTN: WAYNE WHYMARK
22 FRONT STREET WEST (LOWER LEVEL)
TORONTO, ONTARIO
M5J 1C4

Q. OF PKGS	SHIPPED VIA	WAY BILL NO.	SHIPPED FROM	TYPE OF SAMPLES
	PURULATOR	821953569	SVASTIKA	PULP
QUANTITY	DESCRIPTION METHOD	CODE NUMBER	UNIT COST	AMOUNT
1. 10	NI	5 0 0 0 0	8.00	80.00
2. 4	MILLING	1 0 0 0 0	3.00	12.00
GST REG NO. R105082572 APPLIED TO \$115.00				8.05
<p><i>ASSAYS</i> <i>SG-1</i></p> <p><i>Approved by:</i> <i>[Signature]</i></p>				
MISC. CHARGES			PAID BY CHEQUE No. <u>531</u>	
OTHER			DATE... <u>Sept. 17/91</u>	
SHIPPING CHARGES		CUSTOM BROKERAGE	TELEX/FAX	MINIMUM CHARGES
TERMS NET 30 DAYS, 1.5% PER MONTH INTEREST ON ACCOUNTS OVER 30 DAYS			BURCHARGE - RUSH SERVICE 23.00	

ORIGINAL INVOICE



TOTAL IN >

CDN FUNDS \$ 123.05

Swastika Laboratories
P.O. Box 10
Swastika, Ontario
P0K 1T0

INVOICE

NO: 25956

DATE: 09-16-91

PAGE: 1 of 1

GST Registration Number: R 100294743
SOLD TO:

SHIP TO:

Fort Knox Gold Resources
22 Front St. W.
Toronto, Ontario
M5J 1C4

Same

ITEM NO.	QUANTITY	UNIT	DESCRIPTION	G.	P.	UNIT PRICE	AMOUNT
F330	1	1	As	3		6.300	6.30
			Cert#1W-3829-RG1				
			3-GST @ 7 %, Excluded				0.44

*ASSAYS
SG-1*

PAID BY CHEQUE No. 536.
DATE Sept. 20/91

COMMENTS:

Net 30 Days

TOTAL

6.74

0. +
0. +

atories

rio

INVOICE

37600. +
42375. +
79975. +

umber: R 100294743

SHIP TO:

NO: 25732
DATE: 08-27-91
PAGE: 1 of 1

2966. +
2632. +
5598. 0

Resources

Same

79975. +
85573. +

DESCRIPTION	QTY	UNIT PRICE	AMOUNT
Au Assays	3	8.750	280.00
Sample Handling	3	3.000	96.00
Cert#1W-3760-RG1			<u>376.00</u>
3-BST @ 7 %, Excluded			26.32

AID BY CHEQUE No. 524
DATE September 9/91

ASSAYS - NG-1

COMMENTS:	AMOUNT
Net 30 Days	402.32

122910	Nil	0.2	68		113
122917	Nil	0.1	101	5	175
122918	24/14	0.1	55		90
122919	Nil	0.4	228		496
122920	Nil	0.5	294	17	1090
122921	Nil	0.1	53		87
122922	7	1.6	441	946	2080
122923	Nil	1.2	371	85	433
122924	Nil	0.1	42	29	123
122925	21	0.7	143	32	61
122926	Nil	0.3	109		465

Certified by Donna Gardner