



41P115E0128 63.2165 FAWCETT

REPORT
ELECTROMAGNETIC SURVEY

for
RAYLOYD MINES & EXPLORATIONS LTD.
Fawcett and Ogilvie Twp., Ont.

INTRODUCTION

Three recommended diamond drill holes to test weak conductivity observed from the results of an earlier electromagnetic survey illustrated favourable geological associations, but no economic mineral values. As it was thought that the overburden was very deep, an electromagnetic method of deep penetration was employed to survey part of the again in an attempt to acquire new drill targets. The claims group consisted of claims numbered M.R. 43441,2,3, M.R. 44282,3, M.R. 44332 - 38 inclusive, M.R. 43322 - 25 inclusive, and M.R. 45010-11. The VLF method was used employing a Ronka EM 16 unit and 10.3 miles of line were surveyed.

ASSESSMENT WORK DATA

Survey :	Personnel - R.G.Ramsay	Barrie, Ont.	
	G.N.Maltzup	Barrie, Ont.	
	J.G.Willars	New Liskeard, Ont.	
Dates -	April 4, 1967	12 hours x 3	= 36 hours
	April 5, 1967	12 hours x 3	= 36 "
	April 6, 1967	8 hours x 3	= <u>24</u> "
	Total		= 96 " = 12 days

Interpretation and Office Work :

J.G.Willars New Liskeard, Ont.
April 7,9,10,13,1967. -4 days

Total Assessment Work Credits ;

16 days at a rate of 7 - 112 days

The work was performed on all claims with full coverage given to some. (Refer to accompanying map).

$\frac{112}{18} = 6.2$

METHOD OF SURVEY

Readings were taken from two power sources, thus providing additional coverage in a direction perpendicular to the picket lines as well as along them. Power stations used were Cutler, Maine - NAA 17.8 kHz, (perpendicular to the lines) and Annapolis, Maryland - NSS 21.4 kHz (along the lines).

The additional survey results indicated the original weak conductors and some other very weak conductors which are not considered worthy of more drilling, based on the results experienced from the existing diamond drill holes. The survey taken perpendicular to the lines did not indicate targets either.

SUMMARY AND CONCLUSIONS

No new drill targets were indicated by this survey and based on the results of both electromagnetic surveys and the results of the diamond drilling so far, it is recommended that work be discontinued on this group of claims for the present.

Respectfully submitted,



J.O. Willars B.A. So., P. Eng.
April 13, 1967.

Ronka EM16: Manufacturer: Geonics Limited, 2 Thorncliffe Park Drive, Toronto 17. Transmitting station: VLF - radio station NAA, at Cutler, Maine; Frequency: 17.8 Kc. The survey was operated with instrument facing northerly along the lines of the secondary magnetic field at right angles to the direction of the transmitting station being used. This was done by turning the instrument sideways to the direction where the signal is minimum indicating it is pointing toward the transmitting station, and the secondary magnetic field is at right angles to the receiving coil inside the handle of the instrument. A vertical street type of conductor, if it comes close to the surface, gives a sharp cross-over of large amplitude and slow roll-off on both sides. The largest and best conductors give highest ratio of in-phase to quadrature components. Although the frequency in use is higher than other types of EM equipment, we found that, probably because of the great distances between the transmitter and the receiver, this instrument, in many cases, picked up responses from greater depths.

M-803

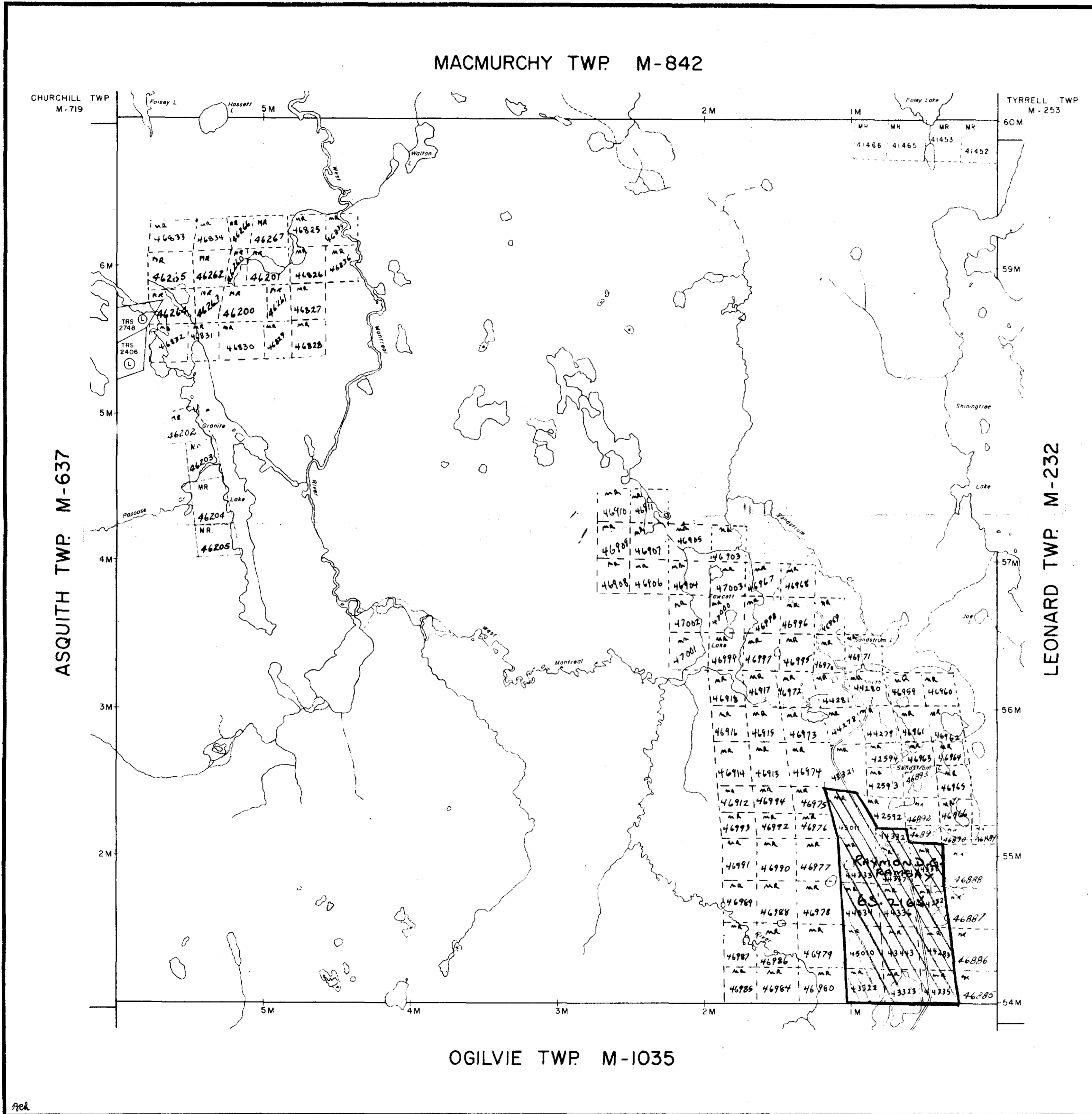
FAWCETT TWP

M-803

M-803

FAWCETT TWP

M-803



THE TOWNSHIP
OF
FAWCETT
DISTRICT OF
SUDBURY
MONTREAL RIVER
MINING DIVISION
SCALE: 1-INCH = 40 CHAINS

LEGEND

PATENTED LAND	Ⓟ
CROWN LAND SALE	C.S.
LEASES	Ⓛ
LOCATED LAND	Loc.
LICENSE OF OCCUPATION	L.O.
MINING RIGHTS ONLY	M.R.O.
SURFACE RIGHTS ONLY	S.R.G.
ROADS	
IMPROVED ROADS	
KING'S HIGHWAYS	
RAILWAYS	
POWER LINES	
MARSH OR MUSKOG	
MINES	
CANCELLED	

NOTES

400' surface rights reservation around all lakes and rivers

**ONT. DEPT. OF MINES
MINING LANDS BR.**
THIS MAP FOR CHECKING
PURPOSES ONLY - MUST
NOT BE SOLD.

DATE OF ISSUE
JUL 28 1967
ONTARIO DEPT. OF MINES

PLAN NO. **M-803**
DEPARTMENT OF MINES
- ONTARIO -

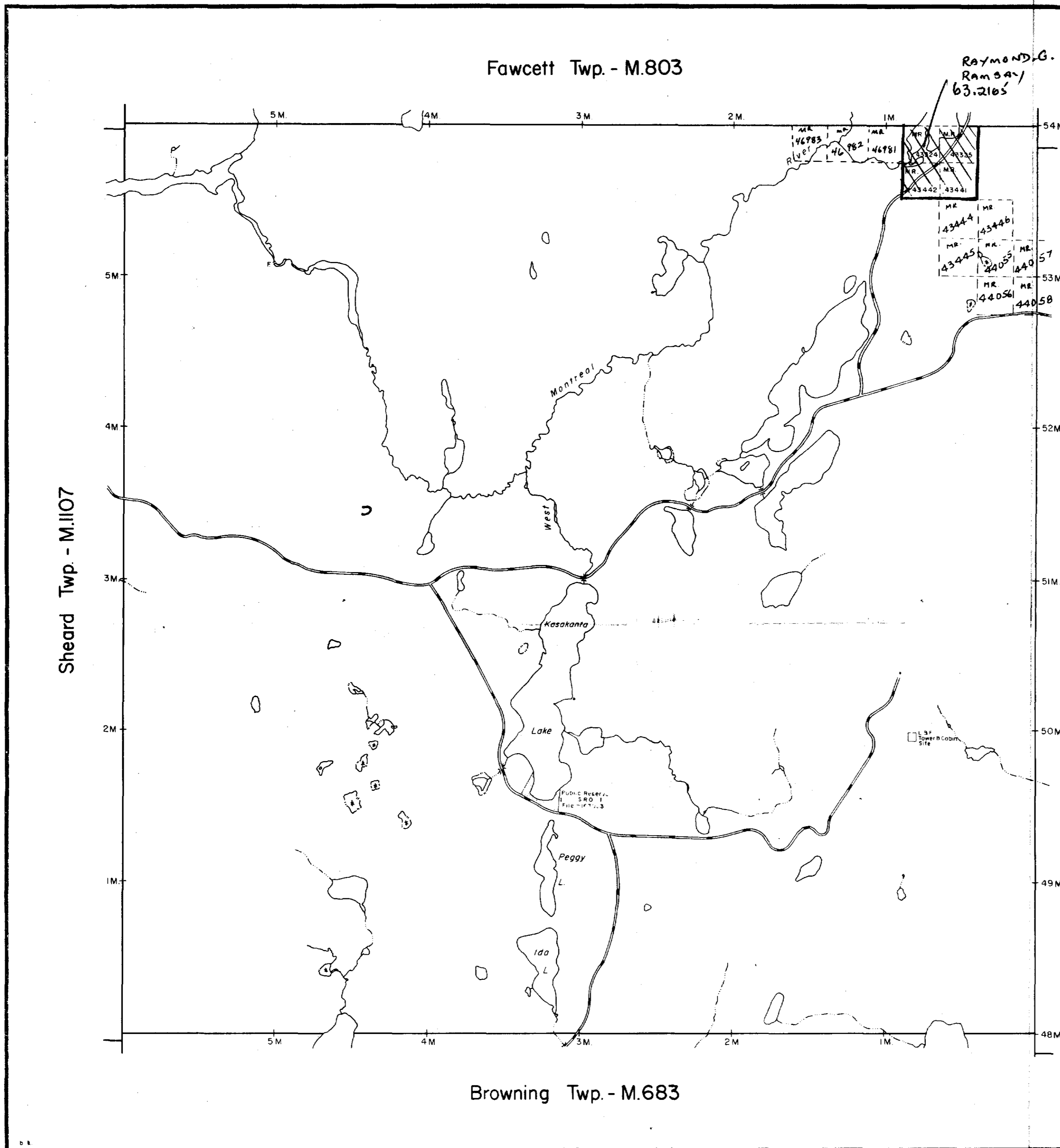
63.2165



W1032

OGILVIE TWP

W1032



THE TOWNSHIP OF
OGILVIE
DISTRICT OF SUDBURY

MONTREAL RIVER
MINING DIVISION
SCALE: 1-INCH 40 CHAINS

LEGEND

PATENTED LAND	Ⓢ
CROWN LAND SALE	C.S.
LEASES	Ⓛ
LOCATED LAND	Loc.
LICENSE OF OCCUPATION	L.O.
MINING RIGHTS ONLY	M.R.O.
SURFACE RIGHTS ONLY	S.R.O.
ROADS	— — — — —
IMPROVED ROADS	— — — — —
KING'S HIGHWAYS	— — — — —
RAILWAYS	— — — — —
POWER LINES	— — — — —
MARSH OR MUSKEG	— — — — —
MINES	Ⓜ
CANCELLED	C.

NOTES

400' Surface Rights Reservation around all lakes and rivers.

ONT. DEPT. OF MINES
MINING LANDS BR.
THIS MAP FOR CHECKING
PURPOSES ONLY - MUST
NOT BE SOLD.

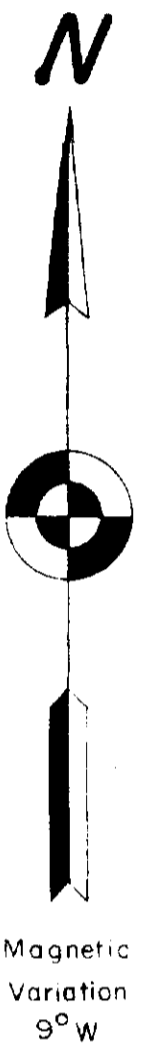
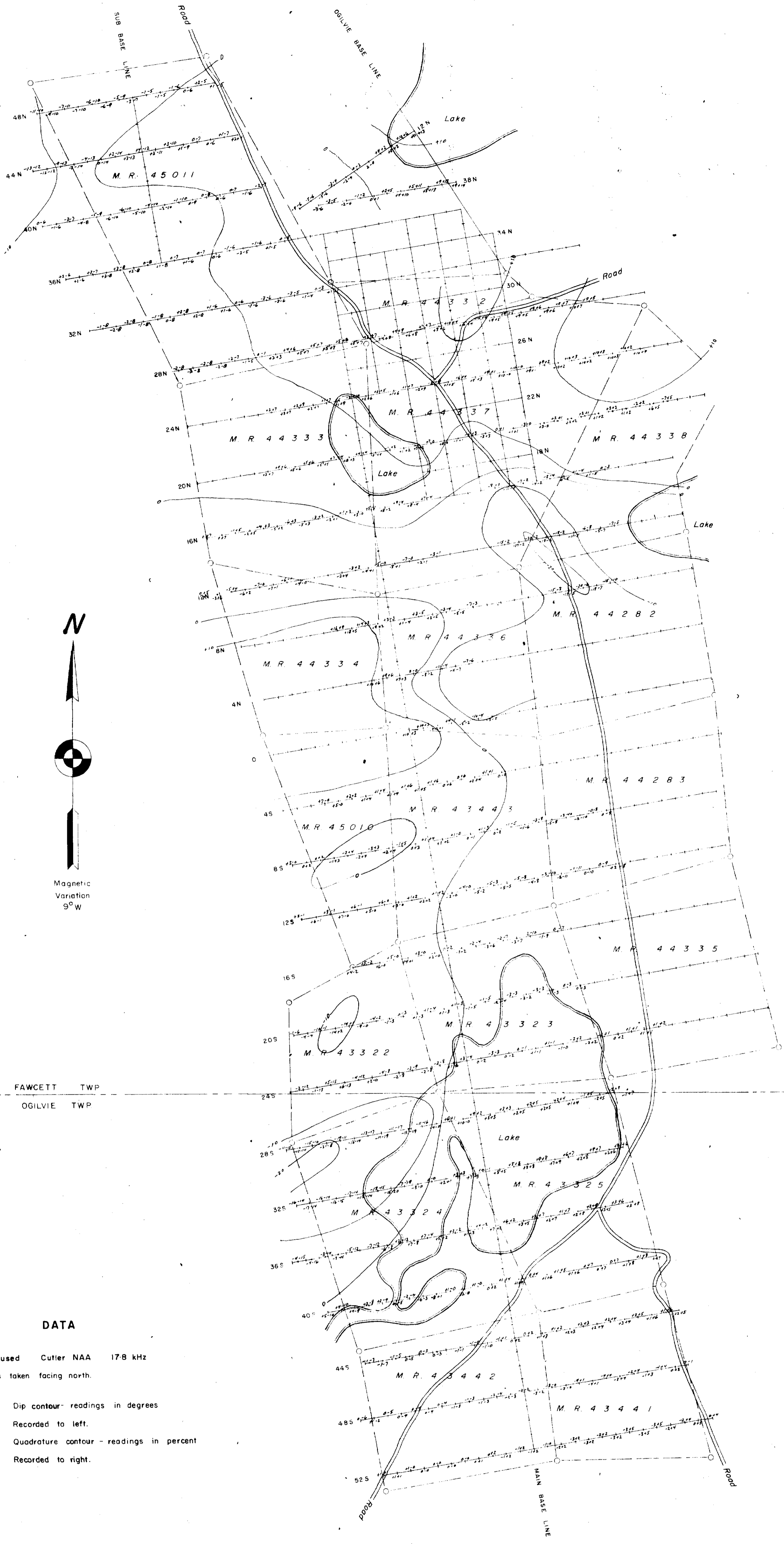
DATE OF ISSUE
JUL 28 1967
ONTARIO DEPT. OF MINES

PLAN NO. **M.1035**

DEPARTMENT OF MINES
— ONTARIO —



41P115E0126 63.2165 FAWCETT



FAWCETT TWP
OGILVIE TWP

DATA

- Station used Cutler NAA 17.8 kHz
- Readings taken facing north.
- Dip contour - readings in degrees
Recorded to left.
- - - Quadrature contour - readings in percent
Recorded to right.

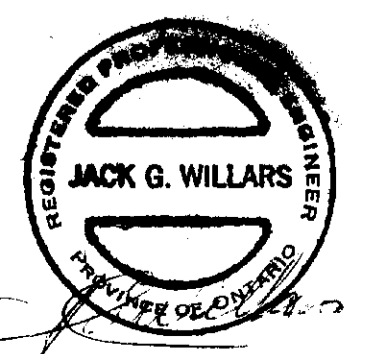
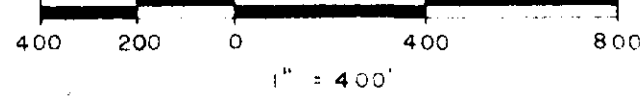
RAYLLOYD MINES & EXPLORATIONS LIMITED

FAWCETT & OGILVIE TWPS.

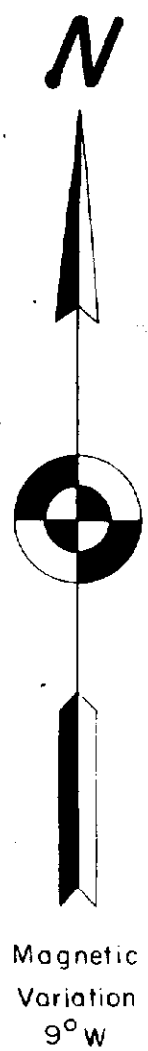
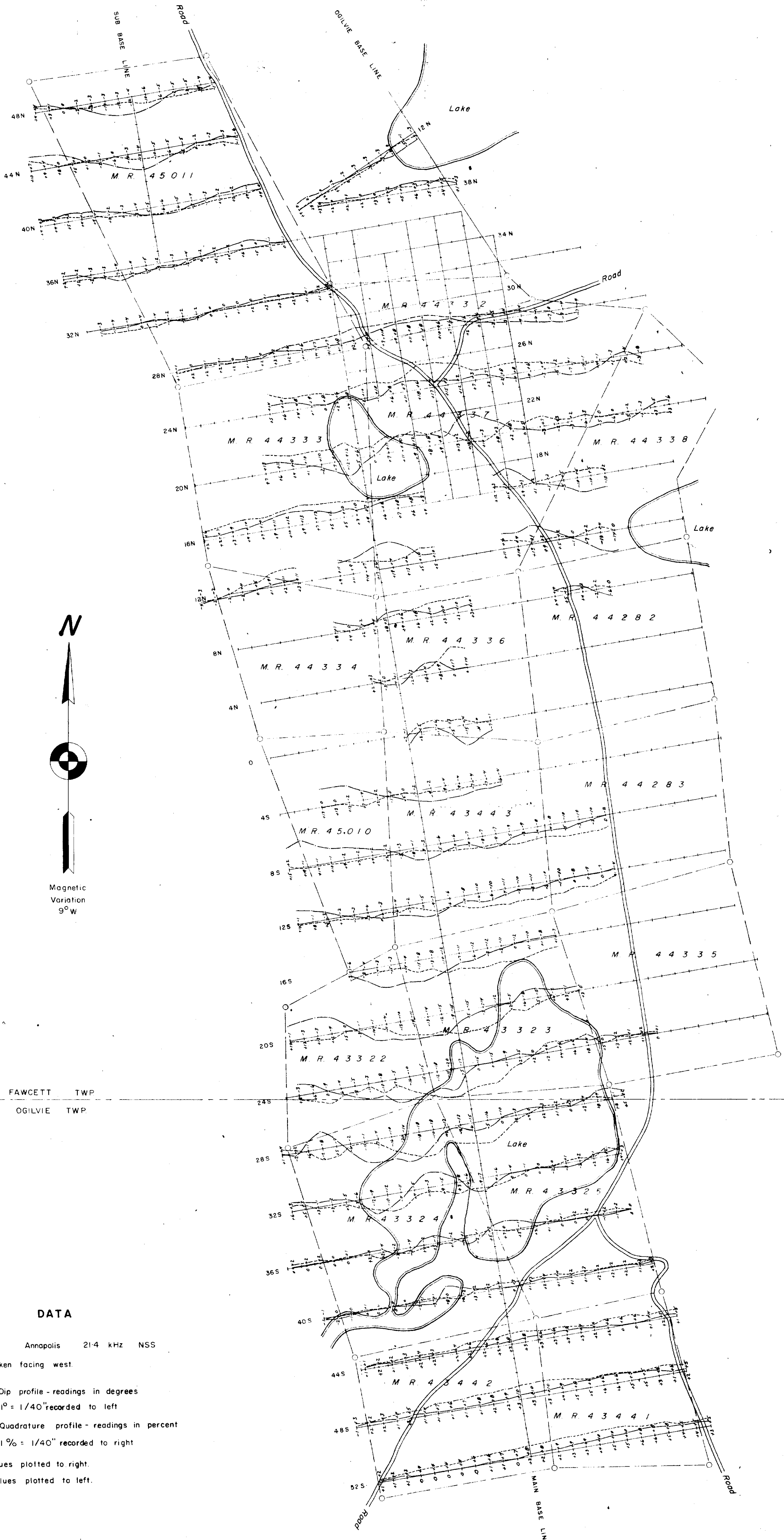
ONTARIO

ELECTROMAGNETIC SURVEY
VLF METHOD

SCALE



41011589 28 63 2165 FAWCETT



FAWCETT TWP
OGILVIE TWP

DATA

Station used Annapolis 21.4 kHz NSS
 Readings taken facing west.
 — Dip profile - readings in degrees
 1° = 1/40" recorded to left
 - - - Quadrature profile - readings in percent
 1% = 1/40" recorded to right
 Positive values plotted to right.
 Negative values plotted to left.

RAYLLOYD MINES & EXPLORATIONS LIMITED

FAWCETT & OGILVIE TWP.

ONTARIO

ELECTROMAGNETIC SURVEY

VLF METHOD

SCALE

