



41P11SE0138 15 FAWCETT

010

Diamond Drilling

Township of FAWCETT

Report N^o 15

Work performed by: Gold Belle Mines Limited

Claim N ^o	Hole N ^o	Footage	Date	Note
367671	GBe-1	175.0'	Apr/75	(1)
	GBe-2	113.0'	Apr/75	(1)
367670	GBe-3	137.0'	May/75	(1)
	GBe-4	128.0'	May/75	(1)
367669	GBe-5	126.0'	May/75	(1)

619.

Notes:

(1) #289-75 MacMurchy & Fawcett Twps.

DIAMOND DRILL RECORD

PROPERTY	: Gold Belle Mines Ltd.	HOLE NO.	: GBe-1
LOCATION	: Fawcett Township, District of Sudbury, Ontario.	DIP	: 45°
CLAIM NO.	: 367671	BEARING	: N 45°E
LATITUDE	: 37 Ft N of 5+70E on L-24-S.	LENGTH	: 175 ft.
DEPARTURE	: 5+70 E	STARTED	: Apr. 17, 1975
	: 34 ft N and 115 ft W of #3 Post of cl 367671	COMPLETED	: Apr. 21, 1975
DRILLED BY	: Ferguson Mining Services	LOGGED BY	: H. Dowhaluk
	*****	CORE SIZE	: IEX

0.0-6.0 : OVERBURDEN. Casing.
 6.0-57.5 : FOLIATED GABBRO. Dk green. Chloritized pyroxene w white plagioclase. Strongly foliated, somewhat trachitic texture. Occasional small carbonate lenses and lines. 14.0-14.5; 14.9-15.2: 2 small QUARTZ lenses, white. Some pyrite grains on edges & chlorite in fractures. The gabbro grades into next.
 57.5-70.9 : CHLORITE SCHIST. Gray-green. Schistose w abundant chlorite. Schistosity towards next @ 40° but actual contact is @ 120°.
 70.9-113.0 : FOLIATED GABBRO. Dk green, med-grd. Abundant epidote in rock. Some diabasic texture in spots. Strongly chloritized. Slightly foliated at first, then strongly so. Occasional calcite lines & lenses up to 1" and traces of reddish hematite.
 62.9-65.0: Lost core.
 72.5-73.4: QUARTZ VEIN (0.9'). First contact irregular, second conformable. White. Small cross-lenses at first contact.
 113.0-116.0 : ARGILLITE. Gray to green-gray. Gradational boundaries.
 116.0-141.7 : GABBRO. Dk green. Med-grd. Some diabasic texture. Occasional argillite bands up to 6" (green gray). Some qtz-carb lenses and lines.
 141.7-143.5 : ARGILLITE. Contains streaks of gabbroic material.
 143.5-168.9 : GABBRO. As above.
 168.9-170.0 : SAND. Unconsolidated. F-grd. Lt gray w greenish tinge.
 170.0-175.0 : GABBRO. As above.
 170.4-170.9: CHERT. Gray w conformable boundaries.

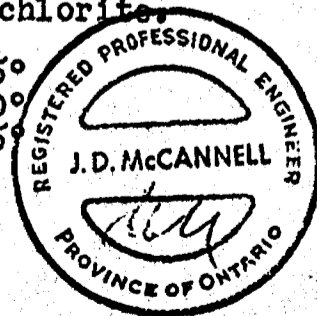
END OF HOLE - 175 ft.

LIST OF SAMPLES

#	Interval	Depth	Au (ozs/t)	Ag (ozs/t)	Notes
#8124	13.9-15.3	1.4'	Tr		Two small qtz vns, Some py on edges Qtz vn w chlorite in fractures & few small py crystals w chlorite.
#8125	72.5-73.5	1.0'	0.01	0.06	

SCHISTOCITY ANGLES

9 ft. - 30°	50 ft - 30°	80 ft - 50°	115 ft - 45°
15 40°	55 35°	85 60°	134 70°
25 50°	60 35°	95 65°	138 75°
30 50°	65 40°	100 80°	
35 35°	70 45°	105 45°	
40 30°	75 60°	110 45°	
45 30°			



DIAMOND DRILL RECORD

PROPERTY	: Gold Belle Mines Ltd.	HOLE NO.	: GBe-2
LOCATION	: Fawcett Twsp., District of Sudbury, Ontario.	DIP	: -45°
CLAIM NO.	: 367671	BEARING	: S 45° W
LATITUDE	: 72' N of 6+65 E on L-24-S	LENGTH	: 113 ft.
DEPARTURE	: 6+65 E 50' N and 68'W of #3 P of claim 367671	BEGUN	: Apr. 22, 1975
DRILLED BY	: Ferguson Mining Services *****	COMPLETED	: May 2, 1975
		LOGGED BY	: H. Dowhaluk
		CORE SIZE	: IEX

0.0-6.0 : OVERBURDEN. Casing.

6.0-42.0 : ARGILLITE. Med greenish gray. Compact, earthy appearance, little schistocity. Dense. Some bluish qtz grains and reddish feldspar separating out in places (obscure and anhedral) as from 6-14', 18-22'. Some feldspathic argillite around 23' (reddish buff colour). Some small, irregular qtz-carb lines and fracture fillings. Occasionally cherty as at 37 ft.

42.0-82.5 : GABBRO. Dk green. Chloritic. Green pyroxene and white plagioclase. F-med grd. Gradational contact w above. Few carb lines and lenses. Considerable epidote and a little reddish hematite in spots.
After 50 ft., quite schistose and med-crse grd.
55.1-57.6: QUARTZ VEIN (2.5'). White fine-textured. Grading into next very slowly.

82.5-87.3 : SILICEOUS ARGILLITE. Med gray. Sharp contact w next @ 45°.

87.3-113.0 : GABBRO. Dk green, crse-grd, chloritic.

SCHISTOCITY ANGLES		End of hole	
15' - 40°	50° - 40°	88' - 45°	
20' - 30°	60' - 30°	90' - 0°	
25' - 50°	65' - 55°	100' - 20°	
30' - 20°	76' - 50°	113' - 20°	
35' - 30°	83° - 45°		

MINING RECORDERS OFFICE - TORONTO
RECEIVED
NOV 25 1975
AM PM
7 8 9 10 11 12 1 2 3 4 5 6

LIST OF SAMPLES

LIST OF SAMPLES				
			Au (ozs/t)	Ag (ozs/t)
#8126	55.0-57.8	2.8 ft	0.02	0.18
#8127	57.8-59.4	1.6 ft	Tr	
#8128	59.4-60.9	1.5 ft	Tr	
#8129	60.9-62.0	1.1 ft.	Tr	

Qtz vein w cons fine poorly crystallized py w the chlorite & graphite in fracture
Chl sch w 5-10% carb stringers, no py.
Chl sch w 50-70% carb lenses. Some small amts of py.
Chl sch w 5-10% carb stringers



DIAMOND DRILL RECORD

PROPERTY	: Gold Belle Mines Ltd.	HOLE NO.	: G30-3
LOCATION	: Fawcett Township, District of Sudbury, Ontario.	DIP	: -52°
CLAIM NO.	: 367670	BEARING	: S 55° E
LATITUDE	: 80' N of L-32-S	LENGTH	: 137 ft.
DEPARTURE	: 11+18 E (680' N and 420' W of #2 P of Cl 367670.	STARTED	: May 7, 1975.
DRILLED BY	: Ferguson Mining Services, Matachewan, Ont.	COMPLETED	: May 14, 1975.
		LOGGED BY	: H. Doyhaluk
		CORE SIZE	: IAX & IEX

0.0-3.2 : OVERBURDEN. Casing.

3.2-3.5 : GREENSTONE. Med to dk gray. Massive. Could be bouldor.

3.5-6.1 : GABBRO. Dk green. Foliated. Med-grd, diabasic texture.

6.1-7.9 : GREENSTONE. As above. 3" calcite veinlet & vein breccia at contact w next. Gradational contact.

7.9-8.3 : GABBRO.

8.3-13.3 : GREENSTONE. As above, gradational contact w next.

13.3-18.4 : GABBRO. As above.

18.4-22.8 : GREENSTONE.

22.8-28.3 : CHLORITIC PYROXENITE. Has a vague, crse-grd texture but dense dk gray on broken surface. Dk green. Pink calcite in cracks. The pyroxene is largely chloritized and any plagioclase present is streaked out.

25.0-25.4 : Wh qtz w some patches of calcite & few grains of py on edges.

28.3-31.2 : QUARTZ VEIN. White. Occasional pieces of greenstone breccia & some chloritic remnants, ghostlike. Many of the small fragments pinkish (feldspathized)

31.2-53.4 : GREENSTONE. Med-gray. Dense. Possibly an argillite. After 41.0, some occasional grains of pyrite. After 49.0, increased amount of pyrite (to 53.4). Grades into next.

53.4-62.0 : GABBRO. Med-grd, poorly developed diabasic texture.

62.0-63.8 : SILICEOUS GREENSTONE. Dk gray-green.

63.8-80.8 : GABBRO. Dk green. Med-grd. As above, grading into next. After 72.0, several white and pink calcite lenses, veinlets and networks. Some py.

80.8-102.5 : GREENSTONE. Med-gray. Chloritic, schistoso. Abundant pinkish calcite lenses, veinlets, and irregular lines to 95 ft.
92.3-93.2: Lost core.
Grades into next.

102.5-108.4 : GABBRO. Foliated. Pink calcite and reddish hematite in fractures.

108.4-123.3 : GREENSTONE. As above. 120.7-121.0: Qtz vn. Few specks py.

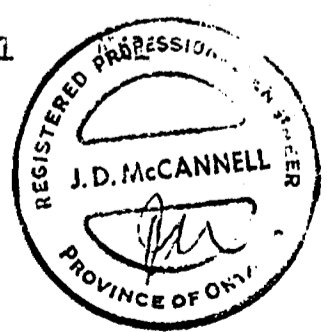
123.3-130.0 : GABBRO. Grades into next very slowly. Well foliated.

130.0-137.0 : GREENSTONE. Dk gray, foliated.

End of Hole - 137 ft.

LIST OF SAMPLES

#	Interval	Depth	Au	Ag (ozs/ton)	Description
#8159	24.9-25.5	0.6 ft.	Nil		Wh qtz vein. Some py and cpy grains on edges.
#8160	28.2-31.4	3.2 ft.	Nil		Wh qtz. Rare pp py, py & cpy grains on edges.
#8161	48.9-53.4	4.5 ft.	Tr		Chl sch w carb stringers, up to 1% py
#8162	86.0-87.6	1.6 ft.	Tr		50% pink carb lenses, Occas py.
#8163	120.6-121.1	0.5 ft.	Tr		Qtz vn, 120.7-121.0. Few grains py.



DIAMOND DRILL RECORD

PROPERTY : Gold Belle Mines Ltd.
 LOCATION : FAWCETT Twsp, District of
 Sudbury, Ont.
 CLAIM NO. : 367670
 LATITUDE : 160' N of L-32-S at
 DEPARTURE : 11+60E
 745' N & 370'W of #2P
 of Cl 367670

HOLE NO. : GBe-4
 DIP : -45°
 BEARING : S 55° E
 LENGTH : 128 ft.
 STARTED : May 15, 1975
 COMPLETED : May 21, 1975
 LOGGED BY : H. Dowhaluk
 CORE SIZE : IEX

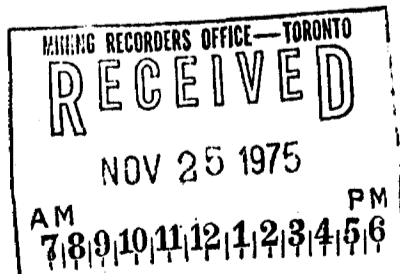
DRILLED BY: Ferguson Mining Services

0.0-6.0 : OVERBURDEN. Casing.
 6.0-44.8 : CHLORITIC GREENSTONE. Dense to very f-grd. Dk green-gray.
 Some schistosity at 45° to core angle. Appears to be
 an argillaceous sediment, possibly a tuff.
 6.5-7.5, 8.0-9.0, 11.5-11.8, 13.6-15.0: Lost core.
 38.8: 2" zone of chalcopryrite grains.
 41.4-42.2 (0.8'): Buffy (feldspathic) alteration. Qtz
 stringers @ 41.5 and 42.1 w some large grains of cpy.
 44.8-47.6 : QUARTZ. White, milky. About 30% calcite. One small grain
 of cpy near end.
 47.6-65.4 : CHLORITIC GREENSTONE. As above.
 65.4-67.3 : QUARTZ-CALCITE VEIN. White, w irregular ribbon structure.
 A few greenstone fragments up to 2 of 3" diameter.
 67.3-72.3 : CHLORITIC GREENSTONE. As above.
 72.3-75.0 : FELDSPATHIC GREENSTONE. Pinkish gray. Occasional grains of
 py. At 10° to core angle.
 74.0-75.8 : QUARTZ-CALCITE VEIN. White. Small feldspathic and chloritic
 remnants.
 75.8-97.6 : FELDSPATHIC GREENSTONE. As above. At 10° to core. Occasional
 grain of cpy or small streaks of py.
 97.6-128.0 : CHLORITIC GREENSTONE. Dk green-gray speckled w fine feldspar

End of hole - 128 ft.

LIST OF SAMPLES

Sample No.	Interval	Depth	Grade	Description
#5602	41.4-42.2	0.8'	ozs Au Tr	Buffy alteration. Some cpy.
#5603	44.7-47.3	2.6'	Tr	Qtz-calcite vein.
#5604	65.4-67.4	2.0'	Nil	Qtz vein, 2 grains of cpy
#5605	74.0-75.9	1.9'	Nil	Qtz vein, few sm grains cpy



BIAMOND DRILL RECORD

PROPERTY	: Gold Belle Mines Ltd	HOLE NO.	: GBe-5
LOCATION	: Fawcett Twsp., District of Sudbury, Ontario.	DIP	: -45°
CLAIM NO.	: 367669	BEARING	: S 55° E
LATITUDE	: 250' N of L-32-S at	LENGTH	: 126 ft.
DEPARTURE	: 12+20E	STARTED	: May 22, 1975
	850' N & 300' W of #2P	COMPLETED	: May 29, 1975
	of Claim 367670	LOGGED BY	: H. Dowhaluk
DRILLED BY	: Ferguson Mining Services	CORE SIZE	: IEX

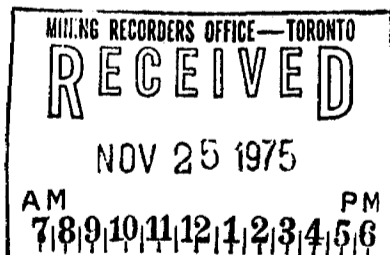
0.0-1.8 : OVERBURDEN. Casing to 4 ft.
 1.8-3.0 : FELDSPATHIC GREENSTONE. Dense. Possibly a feldspathic argillite. Schistosity @ 15° to core and contact w next @ 10°
 3.0-29.5 : CHLORITIC GREENSTONE. Gray-green. Chloritic and siliceous. Well banded or laminated at 30° to core. A few subrounded fragments (1-3 mm). Rare grains of cpy.
 29.5-34.1 : QUARTZ VEIN. Some small remnants of greenstone mostly altered to epidote. Sparse py.
 34.1-56.5 : GREENSTONE. Mostly a dk greenish gray. Argillaceous appearance. Dense, massive. Few qtz-carb lines.
 56.5-61.8 : FELDSPATHIC GREENSTONE. Aphanitic. Streaked w chlorite. Very sparse py.
 61.8-84.6 : QUARTZ-SERICITE SCHIST. Lt gray. Some blue qtz grains in places.
 84.6-87.4 : CHLORITIC GREENSTONE. Dk green. Finely laminated.
 87.4-92.6 : QUARTZ-SERICITE SCHIST. As above.
 92.6-126.0 : CHLORITIC GREENSTONE. Dk green. Quite schistose a speckled w white feldspar. Some actinolite present.

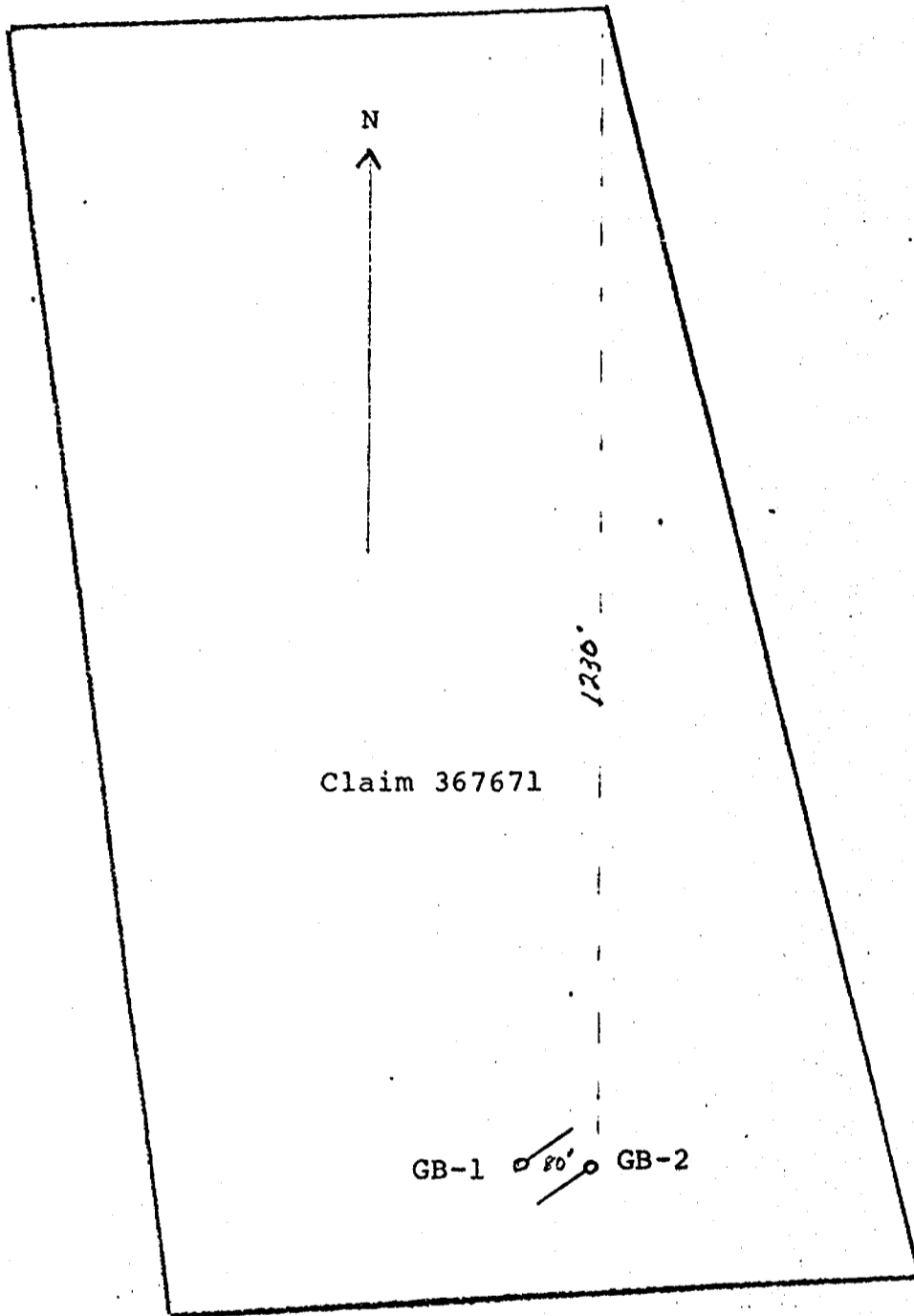
End of hole - 126 ft.

LIST OF SAMPLES

#5601	29.4-34.4	5.0'	Trace Au/t	Qtz vein, odd cpy grain, sparse py.
-------	-----------	------	------------	-------------------------------------

#5606 is a grab sample taken from pit just south of collar of this hole.
 Cu - 7.14%





Claim 367671

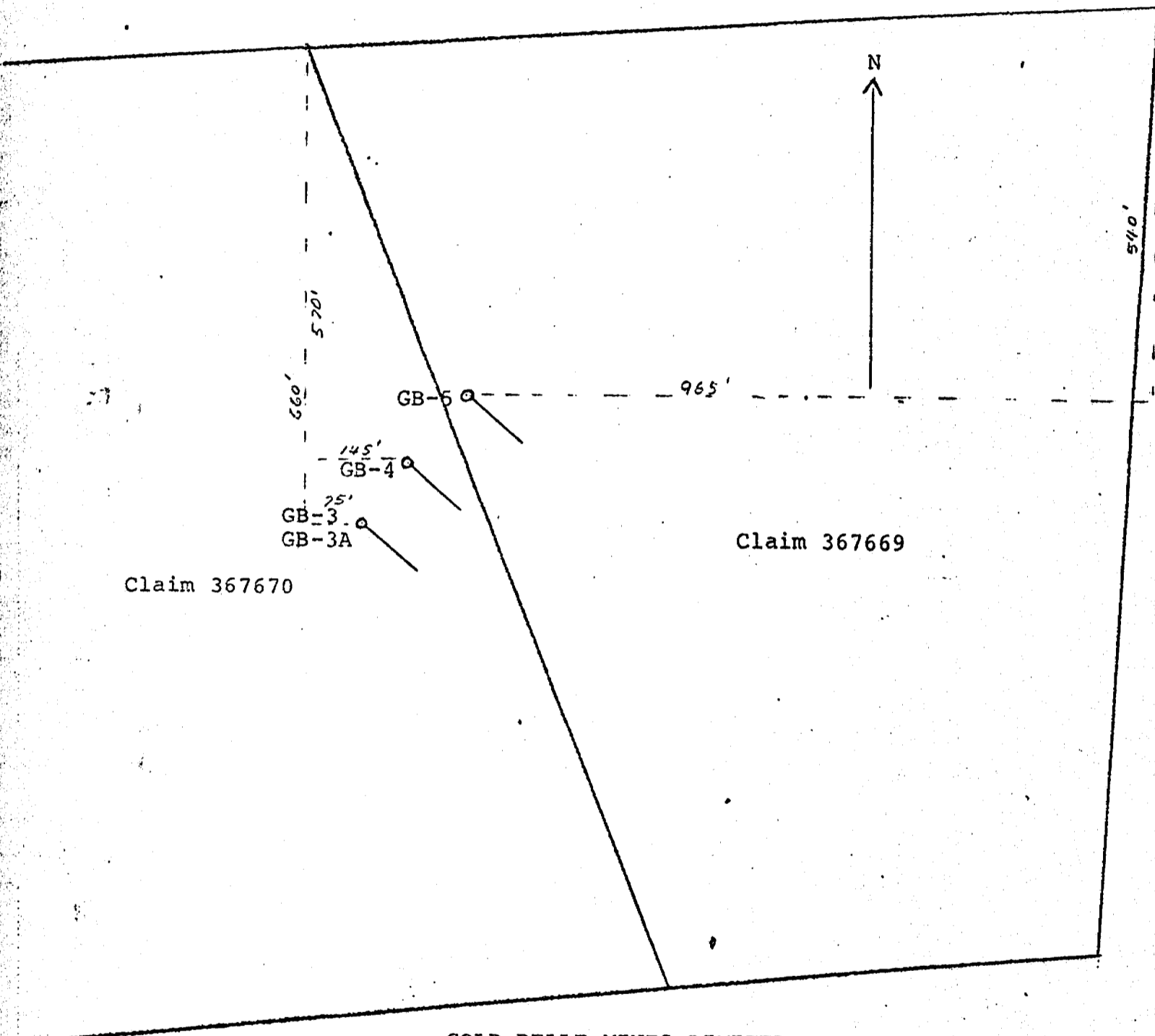
GB-1 / 80' GB-2

GOLD BELLE MINES LIMITED
 FAWCETT TWP.
 ONTARIO

SCALE 1 inch = 200 Feet

*Filed and
 Nov. 20/75*

MINING RECORDERS OFFICE—TORONTO
RECEIVED
 NOV 25 1975
 AM 7 8 9 10 11 12 1 2 3 4 5 6 PM



Claim 367670

Claim 367669

GOLD BELLE MINES LIMITED
 FAWCETT TWP.
 ONTARIO

SCALE 1 inch = 200 Feet

LAND RECORDERS OFFICE—TORONTO
RECEIVED
 NOV 25 1975
 AM 7 8 9 10 11 12 1 2 3 4 5 6 PM

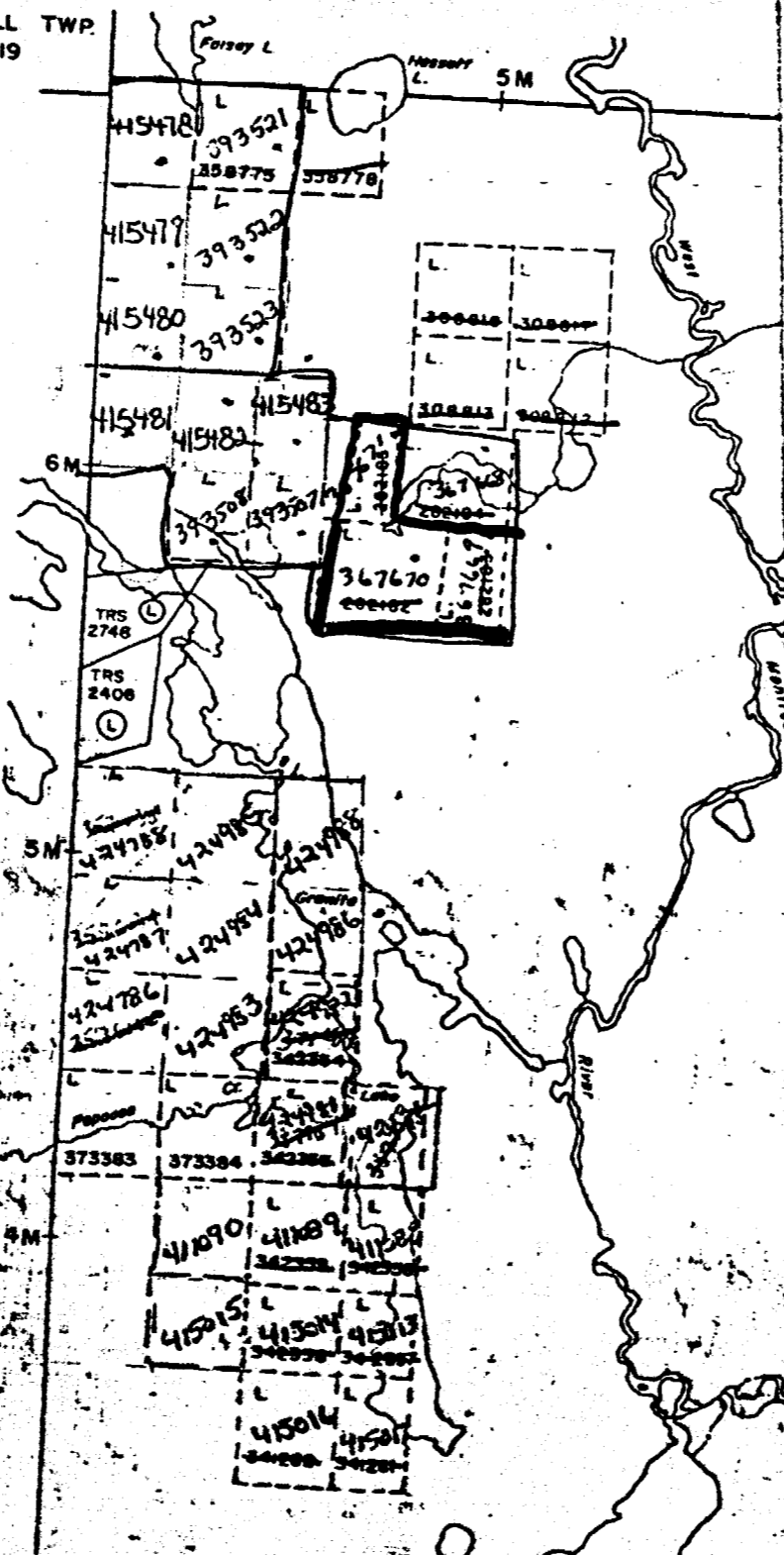
W. J. Campbell
 Nov. 20/75

289-75

MACMURCHY & FAWCETT
TWRs.

CHURCHILL TWP.
M-719

ASQUITH TWP. M-637



OF

FAWCETT

CAUTION
FILED
SUBJECT

M803
LARDER LAKE
MINING DIVISION

SCALE: 1-INCH = 40 CHAINS

LEGEND

- PATENTED LAND (P)
- CROWN LAND SALE C.S.
- LEASES (L)
- LOCATED LAND Loc.
- LICENSE OF OCCUPATION L.O.
- MINING RIGHTS ONLY M.R.O.
- SURFACE RIGHTS ONLY S.R.O.
- ROADS [Symbol]
- IMPROVED ROADS [Symbol]
- KING'S HIGHWAYS [Symbol]
- RAILWAYS [Symbol]
- POWER LINES [Symbol]
- MARSH OR MUSKEG [Symbol]
- MINES [Symbol]
- CANCELLED [Symbol]

NOTES

...since reservation around all lakes and