



41P11SE0154 35 ASQUITH

010

DIAMOND DRILLING

TOWNSHIP: ASQUITH TWP.

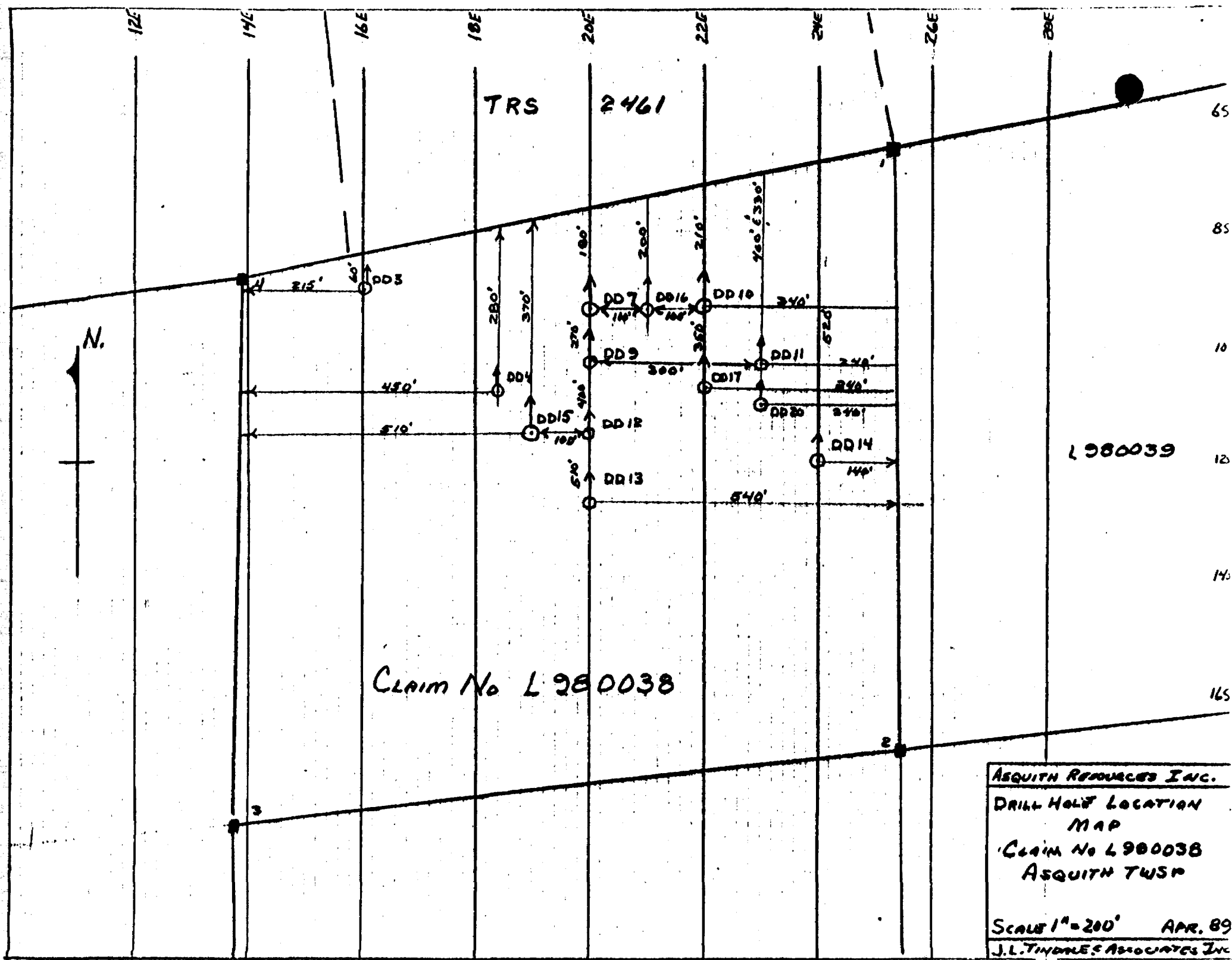
REPORT NO: 35

WORK PERFORMED FOR: Asquith Resources Inc.

RECORDED HOLDER: Same as Above [xx]
: Other []

<u>Claim No.</u>	<u>Hole No.</u>	<u>Footage</u>	<u>Date</u>	<u>Note</u>
L 980038	B89-3	349'	Jan/89	(1)(2)(3)
	B89-4	427'	Jan/89	(1)(2)
	B89-7	350'	Feb/89	(1)(2)
	B89-9	407'	Feb/89	(1)(2)
	B89-10	350'	Feb/89	(1)(2)
	B89-11	177'	Feb/89	(1)(2)
	B89-12	350'	Feb/89	(1)(2)(3)
	B89-13	568'	Feb/89	(1)(2)(3)
	B89-14	400'	Feb/89	(1)(2)(3)
	B89-15	400'	Feb/89	(1)(2)(3)
	B89-16	400'	Feb/89	(1)(2)(3)
	B89-17	319'	Feb/89	(1)(2)(3)
	B89-20	297'	Feb/89	(1)(2)(3)
		<u>4794</u>		
	13DDH			

- NOTES: (1) W8908-206, date filed June/89
(2) For additional Information, See OMEP report OM87-6-c-334, Toronto File # 63.5501. (Dated July 10/91)
(3) Duplicate logs containing assay results were added to this file from OMEP report OM87-6-c-334, on July 10/91.



TRS 2461

L980039

CLAIM No L980038

ASQUITH RESOURCES INC.
 DRILL HOLE LOCATION
 MAP
 CLAIM No L980038
 ASQUITH TWP
 SCALE 1"=200' APR. 89
 J.L. THOMAS ASSOCIATES INC.

DIAMOND DRILL RECORD

J. L. TINDALE & ASSOCIATES INC.
 907-110 Erskine Ave.
 Toronto, Ontario M4P 1Y4

NAME OF PROPERTY ASQUITH TOWNSHIP PROPERTY
 HOLE NO. B89-3 LENGTH 319 Feet.
 LOCATION Asquith Twp; Buckingham Mine Area; Grid B.
 LATITUDE L16E DEPARTURE 9:00S
 ELEVATION -864' AZIMUTH 360° DIP -45°
 STARTED January 26 FINISHED January 27, 1989

FOOTAGE	DIP	AZIMUTH	FOOTAGE	DIP	AZIMUTH
150'	43°				
319'	42°				

HOLE NO. B89-3 SHEET NO. 1
 REMARKS Casing Pulled.
 LOGGED BY K. W. Johnson

FOOTAGE		DESCRIPTION	SAMPLE			ASSAYS				
FROM	TO		NO.	% SULPHIDES	FOOTAGE		%	%	OZ/TON	OZ/TON
				FROM	TO	TOTAL				
0.0	20.0	Casing in Overburden & Bedrock.								
20.0	68.0	Andesite -dark-green; fine to medium-grained gradational; < 1% quartz-carbonate veining in veins generally up to 1 inch at 20° to CIA; moderately chloritic; probably a flow. 47.5 to 48.4 quartz-carbonate-tarmline vein at 55° to CIA; up to 3% tarmline in coarse clots of bladed crystals; only trace pyrite noted;								
68.0	74.0	Sheared Andesite with Quartz-Carbonate -mild to moderate shearing and quartz-carbonate alteration in granular stringers at 50° to CIA; trace pyrite noted.	3388		47.0	48.5	1.5	0	< .001	

ONTARIO GEOLOGICAL SURVEY
 ASSESSMENT FILES
 OFFICE
 JUN 22 1989
 RECEIVED

DIAMOND DRILL RECORD

J. L. TINDALE & ASSOCIATES INC.
 907-110 Erskine Ave.
 Toronto, Ontario M4P 1Y4

NAME OF PROPERTY Buckingham Mine Property
 HOLE NO. B89-3 SHEET NO. 2

FOOTAGE		DESCRIPTION	SAMPLE			ASSAYS					
FROM	TO		NO.	% SULPHIDES	FOOTAGE			%	%	OZ/TON	OZ.TON
				FROM	TO	TOTAL					
74.0	113.0	<p>Andesite</p> <p>-as previous; dark green and fine-grained with up to 2% quartz-carbonate alteration and veining noted.; shear-banded with quartz-carbonate at 50° to C/A.</p> <p>105.5 to 106.1: irregular, 1-inch quartz-cb vein (white) at 10° to C/A.</p>									
113.0	194.3	<p>Andesite with White Quartz-Carbonate Veins.</p> <p>-andesite as previous, with quartz-carbonate veins, most irregular in shape; hosted within chloritic shears, generally at 45° to 80° to C/A; trace pyrite noted along chloritic selvages and partings within quartz.</p> <p>132.2 to 1324: white quartz-cab. vein with 10% black tourmaline hosted within vein itself.</p>									

DIAMOND DRILL RECORD

J. L. TINDALE & ASSOCIATES INC.
 907-110 Erskine Ave.
 Toronto, Ontario M4P 1Y4

NAME OF PROPERTY Buckingham Mine Property
 HOLE NO. 889-3 SHEET NO. 3

FOOTAGE		DESCRIPTION	SAMPLE			ASSAYS				
FROM	TO		NO.	% SULPHIDES	FOOTAGE		%	Au		OZ/TON
					FROM	TO		TOTAL	ppb	
194.3	196.0	Quartz-Carbonate Vein with Epidote. -irregularly-defined white quartz-carbonate vein, generally at 45° to CIA exhibit granular to brecciated selvages up to 0.8 feet cut by <1% low-angle carbonate-filled fractures; breccia zone probably predates veining which exhibits diffuse reddish-potassic alteration along selvages.; trace pyrite associated.	3389		193.0	194.3	1.3	10	<.001	
			3390		194.3	196.5	2.2	71	.002	
196.0	200.8	Andesite.								
200.8	201.3	Quartz-Carbonate Vein. -as previous; up to 10% chlorite incorporated within vein itself.; trace pyrite noted.								
201.3	214.5	Andesite. -as previous; <2% quartz-carbonate vein in vicinity; becomes somewhat bleached in appearance at 206.0 feet.								

DIAMOND DRILL RECORD

J. L. TINDALE & ASSOCIATES INC.
 907-110 Erskine Ave.
 Toronto, Ontario M4P 1Y4

NAME OF PROPERTY Buckingham Mine Property
 HOLE NO. B89-3 SHEET NO. 4

FOOTAGE		DESCRIPTION	SAMPLE				ASSAYS				
FROM	TO		NO.	% SULPH IDES	FOOTAGE			%	%	OZ. TON	OZ. TON
					FROM	TO	TOTAL				
214.5	349.0	Diabase. - upper contact sharp at 10° to C/A; block, medium grained, slightly irregular; Hatchewson Diabase.									
	349.0	End of Hole.									

DIAMOND DRILL RECORD

Additional Sampling

NAME OF PROPERTY Buckingham Mine Property
 HOLE NO. B89-3 SHEET NO. 5

FOOTAGE		DESCRIPTION	SAMPLE			ASSAYS					
FROM	TO		NO.	% SULPH. IDES	FOOTAGE			%	%	OZ. TON	OZ. TON
					FROM	TO	TOTAL				
20.0	27.0	Carbonate-rich, andesitic tuff (?), sheared intensely @ intervals; 1/8" bluegy and gybl. g-c veins injected along shearing @ 60-90°; pyrite veins, mostly with pronounced shearing; pale gybl to 59 gr.									
		@ 20-22.7 well sheared, carb-rich; bl. buff carb alt ⁿ ; no streaks along shear planes.	839	1	20.0	22.7	2.7				
		@ 22.7-26.1 less intense alt ⁿ ; carb-rich; shearing @ 60°; minor bluegy g-c veins @ 60°. Tr py	840	Tr	22.7	26.1	3.4				
27.0	68.0	Andesite, tuffaceous, porphyritic slightly; non-carb;									
68.0	77.0	Carbonate-rich Shear-Zone; becomes brighter gn and less sheared over basal portion; where intensely altered yellowish buff alt ⁿ , flowage; hyp injection of gy blue g-c veins; pyrite 1% diss.; pale gn overall.									
		@ 68.0-69.6 well sheared @ 60°; 1/8" bluegy str @ 60°; whgy g-c veins; irregular, trace diss. pyrite.	841	Tr	68.0	69.6	1.6				
		* @ 69.6-71.2 intense shearing, flowage, buff yellow alt ⁿ of shear planes, gybl. g-c injected, irregular banding; 1% py. as diss in veins.	842	1	69.6	71.2	1.6				
		@ 71.2-74.0 Gsgn to buff gsgn, well sheared @ 60°; minor white g-c @ 45°; blue wh g-c @ 60-80 along shearing; tr py.	843	Tr	71.2	74.0	2.8				
77.0	157.0	Tuffaceous Andesite - porphyritic, as above. minor red Fe staining, trace spec Fe.									
		@ 94.8-97.5 well sheared, carbonate-rich; shearing @ 45° w 20% bluegy g-c veins; minor yellowish alt ⁿ ; tr py	844	Tr	94.8	97.5	2.7				

LANGRIDGES - TORONTO - 366-1168

DIAMOND DRILL RECORD

NAME OF PROPERTY Buckingham Mine
 HOLE NO. B89-3 SHEET NO. 6

FOOTAGE		DESCRIPTION	SAMPLE				ASSAYS				
FROM	TO		NO.	% SULPH. IDES	FOOTAGE			%	%	OZ/TON	OZ/TON
					FROM	TO	TOTAL				
137.0	196.0	Carbonate-rich, altered Andesite; med gn to gngn to yellowish gn; some sections well sheared @ 60-90°; pyrite discs throughout sheared sections; @ 141.9-146.2 sheared section @ 80°; gngn; w 1/4-1" whgtz-calc veins @ 60°; minor blue gngt-calc, var-vein along shearing; disseminated py < 1%	845	41	141.9	146.2	4.3				
		@ 157.0-160.5 yellowish gngn, well sheared; carb rich; py @ 1% disc; blue gngt-c veinslets, whgy var-vein gngt-calc 1/2" veins @ 45°; chlorite melus in wh. veins. 1	846	1	157.0	160.5	2.5				
		@ 160.5-162.7 as above	847	1	160.5	162.7	2.2				
		@ 162.7-167.4 as above	848	1	162.7	167.4	4.7				
		@ 184.4-188.2 well sheared section, carb rich, blue wh. gngt w tourmaline; tr fig, py, shearing @ 70°	849	7-	184.4	188.2	3.8				
176.0	-	Andesite, non carbonate -- last box re-examined									

DIAMOND DRILL RECORD

OM 87-334

NAME OF PROPERTY Buckingham Mine Property

HOLE NO. B89-3

SHEET NO. 5

Additional Sampling

FOOTAGE		DESCRIPTION	SAMPLE			ASSAYS				
FROM	TO		NO.	% SULPH. IDES	FOOTAGE FROM TO TOTAL	%	%	OZ./TON	OZ. TON	
20.0	27.0	Carbonate-rich, andesitic tuff(?), sheared intensely @ intervals; 1/8" bluegy and ggy bl. g-c veins injected along shearing @ 60-90°; pyrite veins, mostly with pronounced shearing; pale gsb to ss gr. @ 20-22.7 well sheared, carb-rich; sh. buff carb alt°; gas streaks along shear planes. @ 22.7-26.1 less intense alt°; carb-rich; shearing @ 60°; minor bluegy g-c veins @ 60°. Tr py	839	1	20.0 22.7 2.7					13
27.0	68.0	Andesite, tuffaceous, porphyritic slightly; non-carb;								
68.0	77.0	Carbonate-rich Shear-Zone; becomes brighter gn and less sheared over basal portion; where intensely altered yellowish buff alt°, flowage; hvy injection of g-b blue g-c veins; pyrite 1% diss.; pale gsb overall. @ 68.0-69.6 well sheared @ 60°, 1/8" bluegy str @ 60°; whgy g-c veins irregular, trace diss. pyrite. * @ 69.6-71.2 intense shearing, flowage, buff yellow alt° of shear planes, ggy bl. g-c injected, irregular banding; 1% py. as diss in veins. @ 71.2-74.0 Gsgn to buff gsgn, well sheared @ 60°; minor white g-c @ 45°; blue wh g-c @ 60-80 along shearing; tr py.	841	Tr	68.0 69.6 1.6					22
			842	1	69.6 71.2 1.6					75
			843	Tr	71.2 74.0 2.8					11
77.0	137.0	Tuffaceous Andesite - porphyritic, as above. minor red Fe staining, trace spec Fe. @ 94.8-97.5 well sheared, carbonate-rich; shearing @ 45° w 20% bluegy g-c veining; minor yellowish alt°; tr py	844	Tr	94.8 97.5 2.7					11

DIAMOND DRILL RECORD

NAME OF PROPERTY Buckingham Mine
 HOLE NO. B89-3 SHEET NO. 6

FOOTAGE		DESCRIPTION	SAMPLE					ASSAYS			
FROM	TO		NO.	% SULPHIDES	FOOTAGE			%	%	OZ/TON	OZ/TON
					FROM	TO	TOTAL				
137.0	196.0	Carbonate-rich, altered Andesite; med gn to ggn to yellowish gn; some sections well sheared @ 60-90°; pyrite discs throughout & sheared sections; @ 141.9-146.2 sheared section @ 80°; ggn; w 1/4-1" whgtz-calc veins @ 60°; minor bluegy gtz-calc, massive along shearing; disseminated py < 1%	845	< 1	141.9	146.2	4.3				219
		@ 157.0-160.5 yellowish ggn, well sheared; carb rich; py @ 1% disc; bluegy gtz-c veinslets, whgy massive gtz-calc 1/2" veins @ 45°; chlorite matrix in wh veins. 1	846	1	157.0	160.5	2.5				35
		@ 160.5-162.7 as above	847	1	160.5	162.7	2.2				13
		@ 162.7-167.4 as above	848	1	162.7	167.4	4.7				303
		@ 184.4-188.2 well sheared section, carb rich, bluewh. gtz w tourmaline; tr fig, py, shearing @ 70°	849	T-	184.4	188.2	3.8				14
196.0	-	Andesite, non carbonate --- last box re-examined									

DIAMOND DRILL RECORD

J. L. TINDALE & ASSOCIATES INC.
907-110 Erskine Ave.
Toronto, Ontario M4P 1Y4

NAME OF PROPERTY Asquith Township Property
HOLE NO. B89-4 LENGTH 427 Feet.
LOCATION Asquith Township; Buckingham (line Area Grid 'B)
LATITUDE 18°40'E DEPARTURE 10.75'S
ELEVATION -21.39' AZIMUTH 360° Az. DIP -45°
STARTED January 27 FINISHED January 29, 1989

FOOTAGE	DIP	AZIMUTH	FOOTAGE	DIP	AZIMUTH
150'	42°				
427'	42°				

HOLE NO. B89-4 SHEET NO. 1
REMARKS Casing Pulled

LOGGED BY A. W. Johnson

FOOTAGE		DESCRIPTION	SAMPLE			ASSAYS					
FROM	TO		NO.	% SULPHIDES	FOOTAGE		%	%	OZ/TON	OZ/TON	
					FROM	TO	TOTAL				
0.0	12.0	Casing in Overburden									
12.0	33.7	Diabase - black to dark green; fine grained Molokan-type diabase; slightly magnetic; ill-defined contact with overburden at 30° to CIA.									
33.7	44.5	Andesite - fine-grained; dark-green, slightly shear-banded at 45° to CIA; <2% thin fracture- fillings of quartz-carbonate-epidote.									
44.5	80.0	Diabase - as previous; 2% epidote along thin fractures.									

ONTARIO GEOLOGICAL SURVEY
ASSESSMENT FILES
OFFICE
JUN 22 1989
RECEIVED

DIAMOND DRILL RECORD

J. L. TINDALE & ASSOCIATES INC.
 907-110 Erskine Ave.
 Toronto, Ontario M4P 1Y4

NAME OF PROPERTY Buckingham Mine Area
 HOLE NO. B89-4 SHEET NO. 2

FOOTAGE		DESCRIPTION	SAMPLE				ASSAYS				
FROM	TO		NO.	% SULPHIDES	FOOTAGE			%	%	OZ./TON	OZ./TON
					FROM	TO	TOTAL				
80.0	86.0	Massive Andesite - massive, fine grained; dark green; <1% carbonate along thin fractures.									
86.0	131.0	Pillowed Andesites - andesite, as previous; dark green and fine grained w/ epidioral flow structures and rounded, undistorted pillow selvages evident.									
131.0	142.0	Massive Andesite - gradational between massive andesite flows and slightly fragmental to tufaceous andesite, exhibiting a slight foliation at 15° to CIA.									
		164.5 to 165.9: slightly epidiorized flow breccia zone; rounded to sub-rounded clasts up to 0.75 inches in chloritic, fine-grained matrix.									

DIAMOND DRILL RECORD

J. L. TINDALE & ASSOCIATES INC.
907-110 Erskine Ave.
Toronto, Ontario M4P 1Y4

NAME OF PROPERTY Buckingham Ave Property
HOLE NO. B89.4 SHEET NO. 3

FOOTAGE		DESCRIPTION	SAMPLE			ASSAYS				
FROM	TO		NO.	% SULPH IDES	FOOTAGE		%	Au Ag		
					FROM	TO		TOTAL	ppb	OZ./TON
142.0	220.5	<p>Pillowed Andesite</p> <p>- slightly epidotized pillow selvages hosting dark-green, fine-grained chloritized andesite.</p> <p>218.9 to 219.8: two 3 inch quartz carbonate veins; irregular at 10° to CIA; trace pyrite associated with chloritic selvages and partings.</p> <p>Blue gtz banded slab 2% py, cpy</p>	3391		218.0	220.5	2.5	7	4.001	
			3392		220.5	222.0	1.5	16	4.001	
			573		225.2	228.5	3.3	230	.007	
			568		228.5	232.0	3.5	746	.022	
			569		232.0	234.9	2.9	2918	.085	
			570		234.9	237.7	2.8	15	4.001	
			571		237.7	243.4	5.7	31	.001	
220.5	281.0	<p>Fine-Grained Andesite</p> <p>- exhibits sections of slight stem-banding and quartz-carbonate alteration; andesite grey-green, lighter than previous pillowed units; up to 2% irregular quartz-carbonate stringers and fracture fillings.</p> <p>220.7 to 221.0: quartz and quartz- carbonate fracture infilling; cherty quartz comprises 60% of zone; white quartz cb. to vein or fracture boundaries; 1% fine fracture-filling pyrite throughout.</p>	572		243.4	244.4	1.0	66	.002	

DIAMOND DRILL RECORD

J. L. TINDALE & ASSOCIATES INC.
 907-110 Erskine Ave.
 Toronto, Ontario M4P 1Y4

NAME OF PROPERTY Buckingham Mine Area
 HOLE NO. B89-4 SHEET NO. 4

FOOTAGE		DESCRIPTION	SAMPLE			ASSAYS			
FROM	TO		NO.	% SULPHIDES	FOOTAGE		Au ppb	Au OZ/TON	OZ TON
					FROM	TO			
		228.5 to 229.3: slight quartz-carb alteration of stem-banded andesite; trace coarse pyrite growths.							
		230.0 to 231.2: 35% quartz and quartz-carbonate stringers and alteration at 55° to CIA; trace pyrite.							
		- from 258.0 feet; 10% fracture-infillings up to 0.5 feet in width of grey, cloudy or smoky quartz with thin carbonatized fractures cross-cutting quartz structures.	574	254.0	256.0	5.0	426	.012	
			3393	258.0	262.0	4.0	3416	0.099	
			3394	262.0	265.0	3.0	353	0.007	
			575	267.0	271.5	4.5	22	.001	
			576	271.5	273.0	2.3	1797	.052	
			577	273.0	276.5	2.7	277	.006	
			578	278.5	281.0	2.5	18	.001	
281.0	289.0	Massive Andesite - as previous.							

LANGRIDGES - TORONTO - 366-1188

DIAMOND DRILL RECORD

J. L. TINDALE & ASSOCIATES INC.
907-110 Erskine Ave.
Toronto, Ontario M4P 1Y4

NAME OF PROPERTY Buckingham Mine Area.
HOLE NO. 889-4 SHEET NO. 5

FOOTAGE		DESCRIPTION	SAMPLE			ASSAYS					
FROM	TO		NO.	% SULPHIDES	FOOTAGE		%	Au ppb	Au OZ/TON	OZ. TON	
				FROM	TO	TOTAL					
289.0	360.0	<p>Pillowed Andesite</p> <p>- fine-grained, dark green andesite with well-rounded, epidotized pillow swages exhibiting quartz-carbonate alteration and/or veining in many cases.; occasional section with quartz-carbonate-epidote fracture infillings over widths up to 2.0 feet.</p> <p>292.1 to 292.9 } breccia zone 296.0 to 297.1 } with grey/white quartz infilling fractures between subangular fragments; up to 20% epidote associated with zones.</p> <p>305.2 to 305.4 : white quartz-carbonate vein at 50° to C/A with 3% black crystal intergrowths of Tourmaline □ associated white carbonate.</p> <p>-grades into massive andesite at 360.0 feet.</p>	3395		290.0	292.0	2.0		9	<.001	
			3396		292.0	294.0	2.0		22	.001	
			2397		294.0	296.0	2.0		33	.001	
			3398		296.0	297.5	1.5		8	<.001	
			2399		305.0	307.0	2.0		8	<.001	

DIAMOND DRILL RECORD

J. L. TINDALE & ASSOCIATES INC.
 907-110 Erskine Ave.
 Toronto, Ontario M4P 1Y4

NAME OF PROPERTY Buckingham Hill Area

HOLE NO. B89-4

SHEET NO. 6

FOOTAGE		DESCRIPTION	SAMPLE			ASSAYS				
FROM	TO		NO.	% SULPHIDES	FOOTAGE		%	Au		
					FROM	TO		TOTAL	%	OZ./TON
360.0	395.0	Andesite - fine grained, massive with occasional section exhibiting quartz-carbonate and shearings.								
		370.6 to 371.0: sheared and schistose andesite with 65% quartz-carbonate veins at 80° to CIA, trace to 1% fine pyrite associated with chloritic selvages.	561		368.6	371.0	2.4		.001	
			560		371.0	372.0	1.0	743	.022	
			562		372.0	375.0	3.0	7	<.001	
			563		375.0	380.0	5.0	34	.001	
			564		381.0	382.8	2.8	7	<.001	
			565		382.8	387.5	4.7	21	.001	
			566		387.5	393.7	6.2	8	<.001	
395.0	427.0	Pillowed Andesite - as previous; slight to moderate quartz-carbonate epidote alteration associated with pillow selvages.	*567		393.7	397.0	3.3	30	.001	banded etc Cpg
	427.0	End of Hole.								

LANGRIDGES - TORONTO - 366-1168

DIAMOND DRILL RECORD

NAME OF PROPERTY Buckingham Mine A20 Twist
 HOLE NO. B89-7 LENGTH 350'
 LOCATION Buckingham Mine Property
 LATITUDE 20+00E DEPARTURE 9+355
 ELEVATION -15.66' AZIMUTH 360° DIP 45°
 STARTED Feb 7, 89 FINISHED Feb 8 1989

FOOTAGE	DIP	AZIMUTH	FOOTAGE	DIP	AZIMUTH
150	41°				
347	44°				

HOLE NO. B89-7 SHEET NO. 1
 REMARKS Casing pulled
 LOGGED BY J.L. TINDALE

FOOTAGE		DESCRIPTION	SAMPLE				ASSAYS			
FROM	TO		NO.	% SULPHIDES	FOOTAGE		%	Au		
					FROM	TO		TOTAL	% ppb	OZ/TON
0	13.0	Casing								
13.0	35.2	Andesite; pale gn. gy; sheared at 90° to core; occasional wh. gy gtz veins; <u>interval carbonate altered</u> throughout which accounts for pale colour; minor fig. pyrite adjacent veining and in areas of hvy shearing; rock breaks concoidally or along shear planes; zone grades downward with lessening carbonate alteration; @ 34.0, 1' zone of shearing with white gtz. carb veining and chlorite; epidote alteration; contact @ 45°.	492	<1	21.0	25.8	4.8	122	.004	
			493	<1	25.8	28.6	2.8	14	<.001	
			494	<1	28.6	32.2	3.4	6	<.001	
			495	<1	32.2	35.2	3.0	7	<.001	
35.2	67.0	Andesite; dk. gn; fig; pillowed w epidote alteration along selvages; occasional wh. gtz-carb veins w chlorite; traces pyrite along veins. @ 57.0-59.3 serp altered section w 3" irregular gtz vein, chlorite; trace pyrite; epidote alt around veins. @ 59.3-62.8 as above w 4" gtz carb vein w serp incl. @ 30° @ 62.8-65.3 as above, red Fe stain along fractures	496	<1	57.0	59.3	2.3	12	<.001	
			497	<1	59.3	62.8	3.5	15	<.001	
			498	<1	62.8	65.3	2.5	7	<.001	

ONTARIO GEOLOGICAL SURVEY
 ASSESSMENT FILES
 OFFICE
 JUN 22 1989
 RECEIVED

LANGRIDGES - TORONTO - 366-1188

DIAMOND DRILL RECORD

NAME OF PROPERTY BUCKINGHAM PROP
 HOLE NO. 1389-7 SHEET NO. 2

FOOTAGE		DESCRIPTION	SAMPLE			ASSAYS			
FROM	TO		NO.	% SULPHIDES	FOOTAGE FROM TO TOTAL	%	Au ppb	Au OZ/TON	Au OZ/TON
67.0	113.9	<u>Andesite</u> ; sheared; gngy to gn; carbonatized to varying intensity; gngtz-carb veins w pyrite @ 80° to core; wavy shear planes in places; @ 67.0-70.8 Sheared w carbonate alt; narrow (1/8"-1/4") gtz carb veins @ 80°; @ 70.8-73.8 Intense shearing, carbonate retro; wavy shearing; gtz-carb along shear planes 82.5-86.0 Alteration Zone begins, carbonate attenuation; gng; minor narrow bluegngtz-carb veins @ 60°; 86.0-88.5 as above w irregular mass of blue ss gtz over 3" @ 87° 88.5-90.5 bleached gng to ss gng, disseminated pyrite cubes * 90.5-92.0 <u>Qtz</u> -bluegng; coarse, w pyrite along edges; blebs in gtz; <u>visible gold</u> along contact and at end of interval adjacent to wall rock inclusions; vein contact @ 45°. Trace Tourmaline 92.0-94.0 Qtz-as above, some vein; w wavy inclusions of wall rock w pyrite cubes. Trace tourmaline needles. 94.0-97.0 Gngn wall rock w white gtz veins throughout up to 2" w pyrite cubes in wall rock, chlorite inclusions.	499	<1	67.0 70.8 3.8	9	2.001		
			500	<1	70.8 73.8 3.0	8	2.001		
			501	<1	82.5 86.0 3.5	9	2.001		
			502	<1	86.0 88.5 2.5	280	.008		
			503	<1	88.5 90.5 2.0	1765	0.051		
			504	<1	90.5 92.0 1.5	21308	.620	Special sample	
			505	<1	92.0 94.0 2.0	4966	0.145		
			506	<1	94.0 97.0 3.0	5986	0.174		

.217/8.5

LANGRIDGES - TORONTO - 368-1168

DIAMOND DRILL RECORD

NAME OF PROPERTY Buckingham Property
 HOLE NO. B 89-7 SHEET NO. 3

FOOTAGE		DESCRIPTION	SAMPLE				ASSAYS				
FROM	TO		NO.	% SULPHIDES	FOOTAGE			%	Au		OZ/TON
					FROM	TO	TOTAL		ppb	OZ/TON	
		@ 97.0-99.5 Gnss, sheared w irregular masses (3") of white gte to blue gte w pyrite diss. in veins & cubes and lining fractures.	507	1	97.0	99.5	2.5		411	.012	
		@ 99.5-102.9 Bl. to gn, sheared, dense, minor wh. gte-calc strcs, trace diss. pyrite.	508	<1	99.5	102.9	3.4		15	<.001	
		@ 102.9-107.0 Sheared andesite, w blebs, strcs of blue gte. Tr. pyrite	509	<1	102.9	107.0	4.1		232	.007	
		@ 107.0-111.5 Sheared & bleached andesite, gngn, minor gte, blue, as melusivus; pyrite cubes	510	<1	107.0	111.5	4.5		17	.001	
		* @ 111.5-113.9 Highly sheared and injected w bluish gr gte, wh gte, brown carbonate alteration in streaks; diss. pyrite through @ 90°	511	1	111.5	113.9	2.4	CK	4150 4501	0.121 0.131	
113.9	137.0	Andesite; gn, f.g., sheared @ 90°, fairly massive; not altered; minor gte-calc veins & lth shearing; pyrite weakly disseminated throughout, usually cubic;									
		@ 113.9-117.0 as above, sheared, 1/4" gte veins	512	1	113.9	117.0	3.1		83	.002	
		@ 130.0, 4" black diabase dyke; @ 45°; chilled.									

DIAMOND DRILL RECORD

NAME OF PROPERTY Buckingham Property

HOLE NO. B89-7

SHEET NO. 4

FOOTAGE		DESCRIPTION	SAMPLE			ASSAYS			
FROM	TO		NO.	% SULPH IDES	FOOTAGE		%	Au	
					FROM	TO		TOTAL	ppb
137.0	150.0	Carbonate altered zone, pale gn. gy; fine grained, sheared w white gtz-tourmaline veins throughout zone; pyrite as disseminated in veins and along bouders; massive pyrite str. rare;							
		@ 137.0-140.5 Gy. gn andesite, sheared; carbonated; w 3" gn. wh gtz-carb vein, tr ps	513	<1	137.0	140.5	3.5	60	.002
		@ 140.5-143.7 as above w several white gtz-tourmaline veins @ 45° - 3" diabase dyke in middle of section.	514	<1	140.5	143.7	3.2	1051	.031
		@ 143.7-147.0 as above w thin 1/8" gtz-tourmaline veins, sheared.	515	<1	143.7	147.0	3.3	38	.001
		@ 147.0-150.0 as above less altered	516	<1	147.0	150.0	3.0	178	.005
150.0	195.0	Andesite; variable carbonate alteration; gn to gy gn; minor irregular gtz-carb veins; tourmaline with occasional vein; pyrite along shears and associated w veins;							
		@ 169.0-173.1 Sheared ggy carbonate rich andesite w several 1/2" blue gtz veins @ 45°	517	<1	169.0	173.1	4.1	39	.001
		@ 183.0-187.6 as above w wh. gtz-tourmaline veinlets.	518		183.0	187.6	4.6	179	.005

LANGRIDGES - TORONTO - 366-1168

DIAMOND DRILL RECORD

NAME OF PROPERTY Buckingham Property
 HOLE NO. B89-7 SHEET NO. 5

FOOTAGE		DESCRIPTION	SAMPLE			ASSAYS			
FROM	TO		NO.	% SULPH IDES	FOOTAGE		%	Au	
					FROM	TO		TOTAL	ppb
195.0	205.5	<u>Pillowed Andesite</u> ; green as grass; slightly sheared; epidote alteration along selvages; red Fe. stain along fractures; irregular masses of gte-carb vein material w chlorite inclusions throughout;							
205.5	274.0	Andesite; carbonate altered; pale gn to gn. g; sheared variably; gte-tourmaline veins and gte-carb veins present but not abundant; pyrite w veins and along shear foliation; shearing: veining @ 90°.							
		@ 210.0 - 212.0 Sheared pale gn carb., blue gte-tourmaline veins @ 90° (45°), + py	519	<1	210.0	212.0	2.0	8	<.001
		@ 212.0 - 217.0 Irregular sheared, wavy, gte-tourmal.; as above	520	<1	212.0	217.0	4.2	28	.001
		@ 217.0 - 219.6 as above	521	21	217.0	219.6	2.6	107	.003
		@ 231.0 - 233.0 Sheared: carbonated; 20% gte carb veins; chlorite altn along veins, @ 90°; 45°.	522	<1	231.0	233.0	2.0	1981	.058
		@ 233.0 - 237.0 as above with thin veins.	523	<1	233.0	237.0	3.2	262	.008
		<u>@ 258.0 - 274.0 Strong Shear Zone</u>							
		Pale gn to yellowish gn; sheared @ 90° with wavy fold banding; injected w blue white gte and carbonate; yellow gn serpentinis fractures planes, some bx;							

DIAMOND DRILL RECORD

NAME OF PROPERTY Buckingham PROPERTY
 HOLE NO. B89-7 SHEET NO. 6

FOOTAGE		DESCRIPTION	SAMPLE			ASSAYS				
FROM	TO		NO.	% SULPH IDES	FOOTAGE		%	A _u A _g		
					FROM	TO		TOTAL	ppb	OZ/TON
		pyrite up to 5% as coarse intergrowths and diss. along planes; zone best developed @ top of interval and grades downward to more of a carbonate zone w less banding; black to dk gr ch. along partings;								
		@ 256.0-258.0 Gn. gytgn, andesite, sl, carbonate alt. n.; slightly cherty; massive; fr. py	524	Tr	256.0	258.0	2.0	12	2.001	
		@ 258.0-260.5 Intense shear zone, flow banded, shearing wavy, injected w blue gtz, partially bx; second generation wh calc-gtz. veins cut across banding @ 20-30°; pyrite very fine grained and as cubes diss along partings and in veins; tr. py.	525	1	258.0	260.5	2.0	38	.001	
		@ 260.5-262.1 as above, 20% blue gtz	526	1	260.5	262.1	1.6	16	2.001	
		@ 262.1-266.5 Gn gn, carbonate rich, bleached, shearing less intense, pyrite traces as diss; not banded like preceding section	527	Tr	262.1	266.5	4.4	15	2.001	
		@ 266.5-268.5 as above (258-262.1) shear banded yellowish green; 1/2" wh gtz termination vein @ end of section @ 90°.	528	Tr	266.5	268.5	2.0	89	.003	
		@ 268.5-272.0 Yellow gn carbonate rich, bleached(?) not banded; dense w minor white; gr gtz veinlets (1/8"); fr. pyrite disseminated	529	Tr	268.5	272.0	3.5	<5	2.001	
		@ 272.0-274.0 Gn carb. rich, less alt. than above, more pyrite; single 1/8" gtz carb vein @ 60°	530	Tr	272.0	274.0	2.0	<5	2.001	

LANGRIDGES - TORONTO - 368-1188

DIAMOND DRILL RECORD

NAME OF PROPERTY Buckingham Property
 HOLE NO. B89-7 SHEET NO. 7

FOOTAGE		DESCRIPTION	SAMPLE			ASSAYS					
FROM	TO		NO.	% SULPHIDES	FOOTAGE			%	%	OZ/TON	OZ/TON
					FROM	TO	TOTAL				
274.0	350	<p>DK. gn. ultramafic; lead w wh. calcite as wavy irregular inclusions; infilling minute fractures; grading downward to more banded, foliated; injection of gtz: calc along fractures and banded in part; more trace pgnite along fractures; very soft and spotted w biotite porphyroblasts; wavy banding; banding @ 70-90°; crinkly wh. gtz. str. throughout; well foliated @ 90°.</p> <p>@ 323.0 6" zone of shearing w pink w calcite in minor gtz.</p> <p>Evo Hole @ 350'</p>									

DIAMOND DRILL RECORD

NAME OF PROPERTY Buckingham Mine
 HOLE NO. B89-9 LENGTH 407
 LOCATION EAST EXTⁿ; 100' S of B89-7
 LATITUDE L20E DEPARTURE 10+255
 ELEVATION -21.57' AZIMUTH 360° DIP -45°
 STARTED Feb 10 8 FINISHED Feb 11 / 89

FOOTAGE	DIP	AZIMUTH	FOOTAGE	DIP	AZIMUTH
150	39				
407	39				

HOLE NO. B89-9 SHEET NO. 1
 REMARKS Casing pulled
 LOGGED BY J.L. TINDALE

FOOTAGE		DESCRIPTION	SAMPLE				ASSAYS			
FROM	TO		NO.	% SULPHIDES	FOOTAGE		%	%	OZ/TON	OZ/TON
					FROM	TO				
0	18	CASING								
18.0	77.0	Andesite; sheared and carbonated; gn to pale gn. gy over more intense alt ⁿ ; wh. to blue gtz veins w tourmaline; pyrite common over better veined sections; shearing; veining @ 70° to C.A.								
		@ 29.9-32.3 start of intense alt ⁿ zone, ggg, thin 1/8" blue wh. gtz @ 80°; pyrite as traces diss along veins, tourmaline.	580	Tr	29.9	32.3	2.4	62	.002	
		* @ 32.3-33.7 60% ggywh. to bl. wh. gtz w chlorite incl. and 2% pyrite, tourmaline needles along edge of veins; rusty partings	581	2	32.3	33.7	1.4	16326	0.475	
		@ 33.7-37.0 20% gtz, ggy, wh. to wh. bl; as irregular veining; sharper veins @ 80°; chlorite hvy along veins; tourmaline hvy in some veins, pyrite 1% in veins and in inclusions in veins;	582	1	33.7	37.0	3.3	926	.027	
		@ 37.0-39.3 5% gtz, blue gy, @ 70°, tr pyrite, ggy rock, sheared.	583	Tr	37.0	39.3	2.3	1090	.032	
		@ 39.3-43.0 Gn. gy sheared carbonate-rich as above; less intense; blue gy gtz vein at end of interval @ 80°; gtz inclusions. Pyrite tr. in veins	584	Tr	39.3	43.0	3.7	27	.001	

ONTARIO GEOLOGICAL SURVEY
 ASSESSMENT FILES
 OFFICE
 JUN 22 1989
 RECEIVED

.118 / 20'

DIAMOND DRILL RECORD

NAME OF PROPERTY Buckingham Mine
 HOLE NO. B 89-9 SHEET NO. 2

FOOTAGE		DESCRIPTION	SAMPLE			ASSAYS			
FROM	TO		NO.	% SULPHIDES	FOOTAGE FROM TO TOTAL	%	%	OZ/TON	OZ/TON
		@ 43.0 - 48.8 Gn. gy sheared wall rock, w splashes blue sygte, tr. minor bl. gte straj;	585	T-	43.0 48.8 5.8			25	.001
		@ 48.8 - 51.4 as above, minor bl. gte @ 80°	586	T-	48.8 51.4 2.6			14	2.001
		@ 51.4 - 55.5 as above, quite massive	587	T-	51.4 55.5 4.1			9	2.001
		@ 55.5 - 58.5 as above, grading into dk. gn rock w quartz-calc veins, and thin whispy calc-gte straj.	588	T-	55.5 58.5 3.0			30	.001
		@ 58.5 - 61.0 Dk. gn, w gte-calc veins as above; carb. is white and flky in gte veins.	589	T-	58.5 61.0 2.5			31	.001
		@ 61.0 - 63.2 as above w 20% glc-carb veins @ 60-45°, partially bx.	590	T-	61.0 63.2 2.2			13	2.001
		@ 63.2 - 68.1 Gn. gy alt ⁿ again, shearing stronger w narrow 1/8" bl. gy. gte along shear planes @ 90°.	591	T-	63.2 68.1 4.9			14	2.001
		* @ 68.1 - 70.4 Intense shear @ 90° w blue gy gte injected along shear planes; py-ite 10%;	592	1	68.1 70.4 2.3			27	.001
		@ 70.4 - 72.5 Gn. gy w 1/8" blue sy gte straj injected at wide spacing;	593	T-	70.4 72.5 2.1			48	.001
		@ 72.5 - 75.2 as above w 5% bl. gy gte, 1% py; trap. py.	594	1	72.5 75.2 2.7			28	.001
77.0	104.6	Andesite; green; pillowed(?), some sharp gte calc veins @ 90°; often irregular veins, thru rock - mostly carb-rich w epidote alteration; veins sugary - some pink calc; rare bx. frags altered by epidote;							

DIAMOND DRILL RECORD

NAME OF PROPERTY Buckingham
 HOLE NO. B89-9 SHEET NO. 3

FOOTAGE		DESCRIPTION	SAMPLE			ASSAYS				
FROM	TO		NO.	% SULPHIDES	FOOTAGE		%	%	OZ/TON	OZ/TON
				FROM	TO	TOTAL				
104.6	157.0	Alteration Zone; pale gn gy; sheared variably but @ 60-80° preferred; blue gy gtz-tourmaline veins as injections in shear planes and as irregular veins; chlorite common in glusion in veins; pyrite in veins; disseminated in well rock ± 1%. NOTE: Shearing not as intense as some zones but alt is intense.								
		@ 104.6-108.6 as above w blue gy gtz irregular; tourmaline; pyrite 1%;	595	1	104.6	108.6	4.0	676	.020	
		@ 108.6-111.5 sheared and injected w blue gtz, some chl. alt of veins as inclusions; 1% py	596	1	108.6	111.5	2.9	199	.006	
		* @ 111.5-112.7 80% gtz as major blue-wh. vein @ 70° and by bl. gtz injected in shear planes along edges vein / remnants of intrusives; pyrite 2% in shear planes; veining.	597	2	111.5	112.7	1.2	176 348	.005 .010	
		112.7-117.0 gassy well rock, minor bl. gtz; 2% pyrite as disseminated throughout.	598	2	112.7	117.0	4.3	494	.014	
		117.0-121.5 as above, sheared, 5% blue gy gtz	599	1	117.0	121.5	4.5	50	.001	
		121.5-125.3 as above, with bl. gtz irregular blobs, 5%, also 3" wh. gtz-tourmaline vein @ 45°.	600	Tr	121.5	125.3	3.8	23	.001	
		125.3-129.5 as above w chlorite rich blue gtz str.	601	Tr	125.3	129.5	4.2	30	.001	
		* 129.5-132.0 50% blue gy gtz w chlorite, 2-3% pyrite	602	2	129.5	132.0	2.5	20	.001	
		132.0-136.0 bn gy, soft, dense, minor bl. gtz str @ 60°	603	Tr	132.0	136.0	4.0	24	.001	

LANGRIDGES - TORONTO - 366-1168

DIAMOND DRILL RECORD

NAME OF PROPERTY Buckingham
 HOLE NO. B89-9 SHEET NO. 4

FOOTAGE		DESCRIPTION	SAMPLE			ASSAYS					
FROM	TO		NO.	% SULPH. IDES	FOOTAGE			%	%	OZ./TON	OZ./TON
					FROM	TO	TOTAL				
157.0	171.0	@136.0-140.2 15% blue gtz, irregular, chlorite; tr. pyrite. <u>Andesite</u> ; dk gn, fig., wispy gtz; calc. veinlets Throught w some tourmaline; grades downward to altered carbonate unit below. 2" wh. rosy gtz -tourmaline vein @ 90° at end of interval.	604	1	136.0	140.2	4.2		21	.001	
171.0	187.0	<u>Carbonate-rich shear zone</u> ; not as intense as some except where sampled;									
		@179.5-183.0 sheared and infilled w wavy banded wh, gn and blue gtz, e 90°; tourmaline w some veins; pyrite boy along shear planes w chlorite and serp; highly carbonate rich rock; soft	605	2	179.5	183.0	2.5		1135	.033	
		@183.0-187.0 - as above w buff alt ² to shearing planes; less gtz injection than above	606	1	183.0	187.0	4.0		87	.003	
187.0	231.2	<u>Andesite</u> ; gn to dk gn; slightly sheared (foliated) @ 90° and infilled w yellowish serp; irregular hair line gtz-carb. veinlets; near trace pyrite; pink calcite veins near end section.									

DIAMOND DRILL RECORD

NAME OF PROPERTY Buckingham Mine
 HOLE NO. B89-9 SHEET NO. 5

FOOTAGE		DESCRIPTION	SAMPLE			ASSAYS					
FROM	TO		NO.	% SULPH. IDES	FOOTAGE			%	%	OZ./TON	OZ. TON
					FROM	TO	TOTAL				
231.2	300.5	Carbonate zone; gy. gr.; sheared; occasional veins and irregular masses of blue gtz, usually bk. full of chlorite-serp inclusions; also wh. gtz carb. vein @ various angles; tourmaline common w blue gtz; pyrite $\pm 1\%$ w veins; intensity cbb's and increases; no well developed shear zone.									
		@ 247.0-251 G. gr.; w irregular blue gtz + tourmaline; 1/2" core and @ 90°; pyrite disseminated $< 1\%$.	607	21	247.0	251.0	4.0		58	.002	
		@ 251-254.3 as above	608	T-	251.0	254.3	3.3		25	.001	
		———— " ————— " ————— " —————									
		@ 278.5-283.0 Gy. gr. carb.; minor blue gtz and sharp sugary wh. gtz w tourmaline @ 60°.	609	T-	278.5	283.0	4.5		163	.005	
		@ 283.0-285.4 sheared, as above w increase in blue gtz, pyrite 1%; 2" gtz-tour @ 60°.	610	1	283.0	285.4	2.4		15007	1437	
		@ 285.4-288.0 as above, sharp 1/4" veins @ 60° appear along shear planes.	611	T-	285.4	288.0	2.6		53	.002	
300.5	317.0	DK. green Andesite; sheared @ 60°; injected w occasional wh. gtz carb veins w tourmaline; some salmon pink calcite; epidote alt. along some shear planes; pt. to red tie stain on some partings; trace fig. disseminated									

DIAMOND DRILL RECORD

NAME OF PROPERTY Buckingham Mine
 HOLE NO. B89-9 SHEET NO. 6

FOOTAGE		DESCRIPTION	SAMPLE			ASSAYS					
FROM	TO		NO.	% SULPHIDES	FOOTAGE			%	%	OZ./TON	OZ./TON
					FROM	TO	TOTAL				
317.0	368.2	Sheared Andesite, gngy, fig.; variable shearing and bleaching where shearing more intense; gtz-calc veins, white; and blue gtz w tourmaline; pyrite finely disseminated, more conc w veins; slight buff-carb alt ² in more intense shears; silicification apparently increased w intensity of shearing.									
		© 317.0-320.6 gngy, 10% gtz-carb veins @ 40°, wispy; minor blue gtz-tourmaline; tr. py.	612	tr	317.0	320.6	3.6		29	.001	
		© 320.6-323.9 as above; minor buff gtz alt ² ; tr. py.	613	tr	320.6	323.9	3.3		40	.001	
		© 323.9-327.0 wavy shearing, @ 70°; gngy w tourmaline, tr. py	614	tr	323.9	327.0	3.1		42	.001	
		© 327.0-330.0 as above; wh gtz-calc veins @ 80°, tourmaline tr.	615	tr	327.0	330.0	3.0		23	.001	
		© 330.0-334.0 less altered, irregular wispy wh gtz-calc veins	616	tr	330.0	334.0	4.0		10	<.001	
		* © 334.0-336.0 alt ² more intense, buff topal agn sheared, injected w 20% wh to gngy wh gtz, banded in part, pyrite along partings in veins, @ 60°	617	1	334.0	336.0	2.0		265	.008	
		x © 336.0-340.8 gngy sheared, minor buff carb alt ² , 10% blue; gngy gtz veins w minor pyrite	618	1	336.0	340.8	4.8		14	<.001	
		x © 340.8-343.3 as above, 20% gtz, blue, wavy shear planes buff alt ² .	619	tr	340.8	343.3	2.5		326	.009	
		x © 343.3-347.0 as above, 10% gtz, sharp wh. gtz @ 60°	620	tr	343.3	347.0	3.7		24	.001	
		© 347.0-349.8 as above 5% gtz	621	tr	347.0	349.8	2.8		15	<.001	
		© 357.6-360.2 zone of shearing, banded thin, @ 70°; wh gngy gtz	622	tr	357.6	360.2	3.6		16	<.001	

DIAMOND DRILL RECORD

NAME OF PROPERTY Buckingham Mines
 HOLE NO. B89-9 SHEET NO. 7

FOOTAGE		DESCRIPTION	SAMPLE			ASSAYS					
FROM	TO		NO.	% SULPHIDES	FOOTAGE			%	%	OZ./TON	OZ./TON
					FROM	TO	TOTAL				
368.2	378.5	Andesite; dk. gn.; shear-banded @ 80°; injected w carbonate along shear-planes; wavy boudinages in filling of gte-calc. veins; minor blue-gy. gte w/ou-melior; traces of pyrite; sharp 1" banded gte-calc vein @ 70° @ end of section.									
378.5	407	Talc-Peridotite; dk gn, very soft, white flecked; streaked w wh. gte-calc veins; sheared w wavy folds; some intense shearing w white gte; shearing veins @ 90°.									
		@ 391.8-393.8 Hwy. shearing; pale gn band; 50% gn. wh. gte-calc vein; gn wavy serp-chlorite inclusions; t. py.	623	T-	391.8	393.8	2.0		30	.001	
		@ 393.8-397 as above, variable wh. gte-calc @ 90°, t. py.	624	T-	393.8	397	3.2		9	2.001	
		END Hole @ 407									

DIAMOND DRILL RECORD

NAME OF PROPERTY BUCKINGHAM MINE
 HOLE NO. B89-10 LENGTH 350'
 LOCATION 200' E of B89-7
 LATITUDE L22E DEPARTURE 9+255
 ELEVATION -21.23' AZIMUTH 360° DIP -45°
 STARTED Feb 11, 1989 FINISHED Feb 12, 1989

FOOTAGE	DIP	AZIMUTH	FOOTAGE	DIP	AZIMUTH
150	40°	?			
347	44°				

HOLE NO. B89-10 SHEET NO. 1
 REMARKS _____
 LOGGED BY J.L. TINDALE

FOOTAGE		DESCRIPTION	SAMPLE			ASSAYS				
FROM	TO		NO.	% SULPHIDES	FOOTAGE		%	%	OZ/TON	OZ/TON
				FROM	TO	TOTAL				
0	11.0	Casing								
11.0	37.0	Diabase; dk gn, fgn, dense w occasional whizpy calc.-epidote veinlets.								
37.0	94.5	Andesite; carbonatized; pale gn. gy; not well sheared, narrow 1/8" wh to ggub. gte calc veinlets @ 60°; very rare blue gtz infilling irregular fractures; traces diss. pyrite. Increasing intensity of shearing down hole w buff carb altz and increase in gtz veining.								
		@ 72.0-74.0 Increase in altz and shearing; minor buff carb. altz w shearing @ 70°; minor tourmaline w fine blue gy injected gtz along shearing.	625	Tr	72.0	74.0	2.0	44	.001	
		* @ 74.0-75.6 Major gtz vein w tourmaline; blue white; w yellowish buff altz products as wavy replacements in shear plane; 1-2% pyrite; 30% gtz; main vein 6"; cpytr.	626	1	74.0	75.6	1.6	39	.001	
		@ 75.6-79.6 Wavy sheared, silicified; buff altered; minor wh. gtz strcs and blue gy injection veins, tr py, tr tourm.	627	Tr	75.6	79.6	4.0	343	.010	
		@ 79.6-82.6 as above, well altered w buff carb. altz.	628	Tr	79.6	82.6	3.0	61	.002	
		@ 82.6-85.6 as above w 2" sharp white gtz vein @ 80° tr. diss. pyrite; bleached lower section	629	Tr	82.6	85.6	3.0	554	.016	

ONTARIO GEOLOGICAL SURVEY
 ASSESSMENT FILES
 OFFICE
 JUN 22 1989
 RECEIVED

DIAMOND DRILL RECORD

NAME OF PROPERTY BUCKINGHAM MINE
 HOLE NO. BB9-10 SHEET NO. 2

FOOTAGE		DESCRIPTION	SAMPLE				ASSAYS				
FROM	TO		NO.	% SULPH. IDES	FOOTAGE		%	%	OZ./TON	OZ. TON	
					FROM	TO					TOTAL
		* @ 85.6-89.2 Intense shearing; alt ^s ; buff carb alt ⁿ throughout; @ 87', 4" zone of bl. gy gtz w pyrite, chlorite. <u>possible VG - very fine.</u>	630	1	85.6	89.2	3.6		2043	.059	↑ 89' ↓
		* 89.2-90.6 Hwy shearing @ 70°; w hvy replacement gobs of pyrite 1/2" to shear-planes; 6" gy wh gtz w pyrite along ho-dirs, trace cpj; tourmaline w gtz. Tr. epz.	631	2	89.2	90.6	1.4		5923	.172	
		90.6-92.1 - Well sheared w buff alt ^s ; 50% blue gy gtz injection; 1% py; veins @ 80°.	632	1	90.6	92.1	1.5		2256	.066	
		92.1-93.0 Qtz veins, wh to gg. white w wavy gn chlorite fracture planes (stylolitic); hvy pyrite w pointing; <u>Visible Gold</u> ; @ 92.2' w hvy pyrite; minute flakes;	633	2	92.1	93.0	.9		146726 117811	4.27 3.428	
		93.0-94.5 Alt ^s carbonate grading to tuffaceous member. 1/8" cubic pyrite disseminations;	634	1	93.0	94.5	1.5		2256 2734	.066 .080	
94.5	149.0	<u>Tuffaceous</u> ; carbonatized; pale gn to gn gg; darker than above; not well sheared, fairly massive; w white gtz-tourmaline veins.									
		@ 94.5-99.0 as above - 2, 4" wh. gtz tourmaline veins @ 90° and 45°. Trace dis. pyrite	635	7	94.5	99.0	4.5		233	.007	

DIAMOND DRILL RECORD

NAME OF PROPERTY Buckingham Mine
 HOLE NO. B89-10 SHEET NO. 3

FOOTAGE		DESCRIPTION	SAMPLE				ASSAYS				
FROM	TO		NO.	% SULPHIDES	FOOTAGE			%	%	OZ./TON	OZ./TON
					FROM	TO	TOTAL				
		<u>Sheared Carbonate Zone</u>									
		* @119.5-121.5 Silicified zone, gywh. gtz, minor blue; tourmaline w gtz; buff carb alteration w wall rock, highly sheared and alt. D ; pyrite as fig. cubes <1%.	636	<1	119.5	121.5	2.0			1436	.042
		* @121.5-123.7 as above, less gtz ($\pm 20\%$); blue wh. gtz veins along shear planes @ 60° ; pyrite 1% along shear planes.	637	1	121.5	123.7	2.2			2484	.072
		@123.7-127 less shearing, some $\frac{1}{2}$ " white sharp gtz veins @ 70° , trace tourmaline;	638	<1	123.7	127.0	3.3			26	.001
		@127-130.0 as above, splashes of gywh gtz, tr. tourmaline, sharp $\frac{1}{2}$ " gtz w tourmaline @ 40°	639	<1	127.0	131.0	3.0			17	.001
		@130.0-134.5 as above, weakly altered and sheared.	640	Tr	130.0	134.5	4.5			36	.001
149.0	179.8	<u>Porphyritic Andesite</u> ; dk. gn; fairly massive w very rare yellowish white phenocrysts of feldspar; occasional veins of soap-calcite, yellowish wh; minor sharp blue wh. gtz; traces pyrite w veining. Note: sheared lower contact w 2" chilled diabase dyke.									
179.8	187.0	<u>Sheared Talc-Peridotite(?)</u> ; has peridotite appearance from other holes but is highly sheared and injected w gy, gn, wh. gtz-calc veins along shear @ 50° ; chlorite inclusions in veins; some of veins boudinaged; tr py.									

LANGRIDGES - TORONTO - 366-1168

DIAMOND DRILL RECORD

NAME OF PROPERTY Buckingham Mine
 HOLE NO. 889-10 SHEET NO. 4

FOOTAGE		DESCRIPTION	SAMPLE			ASSAYS					
FROM	TO		NO.	% SULPHIDES	FOOTAGE		%	%	OZ./TON	OZ. TON	
					FROM	TO					TOTAL
		@ 179.8 - 182.7 - 20% gtz, chlorite, trpy, well screened	641	T _n	179.8	182.7	2.9		217	.006	
		@ 182.7 - 187.0 - 20% gtz-carb, as above	642	T _r	182.7	187.0	4.3		24	.001	
187.0	350	<p><u>DIABASE</u>; dk gn to bl.; f. g to m. g.; occasional epidote rich blue wh, gy gtz-carb veins; olivene phenocrysts rare = <u>MARCHEWAN DIABASE DYKE</u>.</p> <p>@ 194.0 2" gn epidote-gtz-calc vein @ 20°</p> <p>@ 238.0, 4" gn. epidote " " " @ 45°, tr py-ite.</p> <p>@ 277.0, 12" " " " " @ 45°</p> <p>@ 292; Fault zone - drillers report sand seam.</p> <p><u>End Hole @ 350'</u></p>									

DIAMOND DRILL RECORD

NAME OF PROPERTY BUCKINGHAM PROPERTY
 HOLE NO. B89-11 LENGTH 177
 LOCATION 100' East of B89-10; 100' South
 LATITUDE L 23E DEPARTURE 10 + 255
 ELEVATION -22.74' AZIMUTH 360 DIP -45°
 STARTED Feb 12/89 FINISHED Feb. 12/89

FOOTAGE	DIP	AZIMUTH	FOOTAGE	DIP	AZIMUTH
177'	46°				

HOLE NO. B89-11 SHEET NO. 1
 REMARKS Casing pulled
 LOGGED BY J.L. TINDALE

FOOTAGE		DESCRIPTION	SAMPLE			ASSAYS					
FROM	TO		NO.	% SULPHIDES	FOOTAGE		%	%	OZ/TON	OZ/TON	
				FROM	TO	TOTAL					
0	31.0	CASING									
31.0	67.0	<u>Carbonate-Silicified S.Z.</u> Tuffaceous andesite; ggn to pale ggn; fine grained; carbonate-rich zone; highly altered; sheared; grades downward to lesser carbonate enrichment and to ggn to dark green colour with less shearing. Lower contact arbitrary, based on carbonate content and colour change. Zone contains ggn, wh. gtz veins, blue gtz, pyrite; cpy in varying quantities as described below. Preferred vein orientation 45° to C.A. @ 34.4-37.0 ggn; sheared @ 60° to C.A.; 1/8 g.c. str. x-c shearing tr. ps; @ 37.0-40.2 as above @ 40.2-43.0 as above @ 43.0-44.6 Blue gtz irregularly injected along shearing and as irregular veinings; heavy py against vein edges; Carbonate lining fractures in gtz; trace cpy. @ 44.6-45.7 sheared as above, less blue gtz, 1% disc. py. @ 45.7-47.0 Gg. wh. gtz vein; tr. py; cpy; e45°; massive									
			645	Tr	34.4	37.0	2.6	15	2.001		
			646	Tr	37.0	40.2	3.2	20	.001		
			647	Tr	40.2	43.0	2.8	13	2.001		
			648	1	43.0	44.6	1.6	8776	.255		
			649	1	44.6	45.7	1.1	369	.011		
			650	Tr	45.7	47.0	1.3	3356	.098		
} .137/4.0											

ONTARIO GEOLOGICAL SURVEY
 ASSESSMENT FILES
 OFFICE
 JUN 22 1989
 RECEIVED

LANGRIDGES - TORONTO - 368-1168

DIAMOND DRILL RECORD

NAME OF PROPERTY Buckingham Mine
 HOLE NO. B 89-11 SHEET NO. 2

FOOTAGE		DESCRIPTION	SAMPLE			ASSAYS					
FROM	TO		NO.	% SULPHIDES	FOOTAGE			%	%	OZ/TON	OZ/TON
					FROM	TO	TOTAL				
		* @ 47.0 - 49.2 dk ss, minor buff carb. alt ^a ; 6" gy wh gtz w py and cpy @ 30°; blue gtz, fractured w carb in fractures; trace tourmaline;	651	1	47.0	49.2	2.2		983	1.029 1.022	
		* 49.2 - 53.3 gy rock; carb-rich; irregular blue gtz to 15% of mass; shorper bl. gtz @ 60°; pyrite diss. throughout to 2%.	652	2	49.2	53.3	4.1		497	.014	
		@ 53.3 - 57.0 gray carb-rich; minor blue gtz (1/2") veins @ 70°; several whisp w gtz carb veinlets, tr. py	653	Tr	53.3	57.0	3.7		85	.002	
		@ 57.0 - 60.0 massive gray carb-rich; no blue gtz, tr. gtz-calc str	654	Tr	57.0	60.0	3.0		41	.001	
		@ 60.0 - 63.2 as above w increase in wh. gtz-carb veinlets	655	Tr	60.0	63.2	3.2		11	2.001	
		* @ 63.2 - 64.6 Sliced w minor buff carb alt ^a along shear planes; wh. gtz-tourmaline injected along shear planes; @ 60°; pyrite fig. diss.	656	1	63.2	64.6	1.4		9	2.001	
		@ 64.6 - 67.0 gy gn carb-rich; cpy splashes; tr py. minor gtz-calc veins.	657	Tr	64.6	67.0	2.4		62	.002	
67.0	88.3	<u>Andesite</u> ; gn to dk gn; med. grd; lessening carbonate content; fairly massive; minor gn. wh. g-c veins often whisp; moderate foliation; traces diss. pyrite.									
		@ 81.3 5" gn. wh. g-c vein w tr cpy, py @ 45°									

LANGRIDGES - TORONTO - 366-1168

DIAMOND DRILL RECORD

NAME OF PROPERTY Buckingham Mine
 HOLE NO. B89-11 SHEET NO. 3

FOOTAGE		DESCRIPTION	SAMPLE			ASSAYS				
FROM	TO		NO.	% SULPH. IDES	FOOTAGE		%	%	OZ./TON	OZ. TON
					FROM	TO				
88.3	177.0	<p><u>MATACHEWAN Diabase</u>; chilled edge; olivine phenocrysts; massive; dk gr. to black; med. gr. d.</p> <p>END Hole @ 177'</p> <p>NOTE: Stopped hole early - encountered Db. dyke.</p>								

DIAMOND DRILL RECORD

NAME OF PROPERTY Buckingham Mine
 HOLE NO. B09-12 LENGTH 350'
 LOCATION 125' South of 09-10
 LATITUDE 20E DEPARTURE 11+50S
 ELEVATION -22.89' AZIMUTH 360 DIP 45°
 STARTED Feb. 13 1989 FINISHED Feb 14 1989

FOOTAGE	DIP	AZIMUTH	FOOTAGE	DIP	AZIMUTH
150	42°				
347	42°				

HOLE NO. B09-12 SHEET NO. 1

REMARKS _____

LOGGED BY J.L. TINDALE

FOOTAGE		DESCRIPTION	SAMPLE				ASSAYS					
FROM	TO		NO.	% SULPHIDES	FOOTAGE			%	%	OZ/TON	OZ/TON	
					FROM	TO	TOTAL					
0	41.0	Casing.										
41.0	87.0	<u>Carbonate Zone</u> ; f.g.; gngn, to gngy; well altered, heavy sheared in sections w/ buff carb. alteration; gtz veins throughout w/ blue, white, gy. white; wavy shearing where intense @ 45°; st-ony zone throughout.										
		@ 41.0-44.0 gngy, f.g., well sheared, silicified(?), minor buff carb alt ⁿ ; blue wh. gtz @ 70°, trace pyrite diss. tr. cps;	658	Tr	41.0	44.0	3.0					
		@ 44.0-49.2 gngy carb rock, blue gtz infills in fractures, 1/4" blue gtz @ 80°.	659	Tr	44.0	49.2	5.2					
		@ 49.2-53.8 as above, sharp blue: wh. gtz (1/4") @ 80°.	660	Tr	49.2	53.8	4.6					
		@ 53.8-56.6 increased sheared, as above, to buff carb	661	1	53.8	56.6	2.8					
		@ 56.6-58.2 <u>6" bl. sy gtz vein</u> , pyrite; w/ gngy carb.	662	1	56.6	58.2	1.4					
		@ 58.2-60.5 gngy carb, to diss pyrite; minor blue gtz	663	Tr	58.2	60.5	2.2					
		@ 60.5-64.0 as above	664	Tr	60.5	64.0	3.5					
		* @ 64.0-67.0 <u>highly sheared</u> ; buff carb alt ⁿ ; f.g. pyrite diss. throughout; shearing @ 45°; blue gtz injected along planes, all blue gtz, at end sections	665	1	64.0	67.0	3.0					

ONTARIO GEOLOGICAL SURVEY
 ASSESSMENT FILES
 OFFICE
 MAR 22 1989
 RECEIVED 5823

DIAMOND DRILL RECORD

NAME OF PROPERTY Buckingham Mine
 HOLE NO. B 89-12 SHEET NO. 2

FOOTAGE		DESCRIPTION	SAMPLE			ASSAYS			
FROM	TO		NO.	% SULPH. IDES	FOOTAGE		%	OZ. TON	OZ. TON
					FROM	TO			
		69.3 @ 67.0 - Intense shearing, buff carb altn, serp. lining shear @ 45°; silicified; blue gtz str.	666	1	67.0	69.3	2.3		
		@ 69.3 - 71.0, 20% blue gy gtz in buff altered sheared rock, @ 45°, pyrite 1-2%	667	2	69.3	71.0	1.7	0.023	
		@ 71.0 - 73.5; as above w irregular gy. wh gtz <u>tourmaline</u> , tr ps.	668	Tr	71.0	73.5	2.5		
		@ 73.5 - 76.2 as above w minor gn. gy gtz, <u>tourmaline</u> , tr. cpd.	669	Tr	73.5	76.2	2.7		
		@ 76.2 - 81.0 as above, zone weaker, minor buff carb.	670	Tr	76.2	81.0	4.8		
		@ 81.0 - 83.8 as above, irregular wh. gtz veins	671	Tr	81.0	83.8	2.8		
		@ 83.8 - 87.0 as above, minor blue gtz	672	Tr	83.8	87.0	3.2		
87.0	107.0	<u>Pillowed Andesite</u> ; Green; sheared at 45° and injected w wh gtz-cale veins //d shearing; some pink calc w wh. gtz; epidote altn w veining; serpentinized sections (gn as gnss); red Fe stain and inclusions of specular hematite noted w some veins; pyrite rare as disseminations w veins	673	Tr	94.6	100.7	6.1		
			674	Tr	100.7	104.8	4.1		
107.0	147.0	<u>Carbonate-rich andesite</u> ; gy to gy gn; variable intensity of shearing @ 60°; wh, clear and gy gtz-carb veins along shearing; pyrite traces to 1% w associated veining; @ 117.5 - 119.3 sheared w pale gn carb rock, blue gy; clear gtz, tr ps @ 80°	675	Tr	117.5	119.3	1.8		

DIAMOND DRILL RECORD

NAME OF PROPERTY Buckingham Mine
 HOLE NO. B99-12 SHEET NO. 3

FOOTAGE		DESCRIPTION	SAMPLE				ASSAYS				
FROM	TO		NO.	% SULPHIDES	FOOTAGE		%	%	OZ./TON	OZ./TON	
				FROM	TO	TOTAL					
		① 121.8 - 125.3 Sheared gngy rock w irregular wh, gtz w chlorite inclusions	676	Tr	121.8	125.3	3.5			0.024	
		① 133.0 - 135.8 moderately sheared; carbonate; blue gtz veins; @ 80°; traces pyrite; buff carb alt. inclusions in main vein.	677	Tr	133.0	135.8	2.8				
		* ① 141.7 - 143.2 50% gtz, gy, cler- and minor-blue w chlorite lugs along shear planes; minor buff carb alt.; py 1%	678	1	141.7	143.2	1.5				
		① 143.2 - 147.0 gngy carb rock w several 1/4" gy gtz veins @ 60°. Tr py.	679	Tr	143.2	147.0	3.8				
147.0	177.0	<u>Pillowed Andesite</u> ; dk gn, gn; f. med gnd; heavy epidote; serp alteration; gy and white gtz-carb veins @ 45° preferred; traces of py; minor Fe stain.									
		① 147-150.0; 25% gy wh. gtz-epidote veins; shearing trace spec. hematite; red stain.	680	Tr	147.0	150.0	3.0				
		Note: lower contact gradual to carbonate-rich zone.									
177.0	326	<u>Carbonate-Rich Zone</u> ; variable intensity of shearing; gy to gngy; f.g.; blue gtz injected along shear planes @ 60°; pyrite increase from none to 2.5% in well sheared sections; minor buff carb alt. w intense shearing; wavy shearing in places;									

DIAMOND DRILL RECORD

NAME OF PROPERTY Buckingham Mines
 HOLE NO. B89-12 SHEET NO. 4

FOOTAGE		DESCRIPTION	SAMPLE			ASSAYS					
FROM	TO		NO.	% SULPH. IDES	FOOTAGE			%	%	OZ. TON	OZ. TON
					FROM	TO	TOTAL				
		@190.0-192.7, gy. gn, carb-rich, 1/8" blue gtz strcs @ 60°; minor pyrite	681	Tr	190.0	192.7	2.7				
		* @192.7-195.0 intense shearing; gy; blue gtz injected along shear planes; minor buff carb; pyrite 1%	682	1	192.7	195.0	2.3				
		* @195.0-197.0 as above, flow banded, wavy, blue gtz along shear planes; tr. pyrite.	683	1	195.0	197.0	2.0				
		* @197.0-198.7 30% blue gtz, fractured with chlorite-serp inclusions; pyrite 2% along shear planes,	684	2	197.0	198.7	1.7				
		@198.7-200.7 Gy. gn, carbonate, minor blue gtz strcs, trap <u>STRONG Shear Zone</u>	685	Tr	198.7	200.7	2.0				
		@245.0-250 Gn. gy, massive, weakly sheared, strongly carbonatized; minor wh. gy gtz-carb veins	686	Tr	245.0	250.0	5.0				
		@250.0-252.5 as above, w blue gtz strcs, random orient.	687	Tr	250.0	252.5	2.5				
		@252.5-255.6 as above, bleached, gy; pyrite 1%	688	1	252.5	255.6	3.1				
		* @255.6-256.1 Blue gtz, w chlorite, buff altm, pyrite 3%; shearing @ 60°.	689	3	255.6	256.1	0.5			0.544	
		* @256.1-257.5 Intensely sheared @ 70°, blue gtz injected along shear planes, minor buff altm; pyrite 2%	690	2	256.1	257.5	1.4				

DIAMOND DRILL RECORD

NAME OF PROPERTY Buckingham Mine

HOLE NO. B89-12

SHEET NO. 5

FOOTAGE		DESCRIPTION	SAMPLE			ASSAYS					
FROM	TO		NO.	% SULPH. IDES	FOOTAGE			%	%	OZ./TON	OZ./TON
					FROM	TO	TOTAL				
		@ 257.5 - 258.9 Qtz, blue, gy, sheared, buff alteration, shearing @ 60°; pyrite clay streaks @ 2%	691	2	257.5	258.9	1.4				
		@ 258.9 - 261.1 Gn gy carb; wh gy gtz - tourmaline vein @ 30°, 1/2";	692	tr	258.9	261.1	2.2				
		@ 261.1 - 264.7 as above, minor-gy gtz - tourmaline <u>Strong Shear Zone</u>	693	tr	261.1	264.7	3.6				
		@ 278.6 - 281.9 Gn. gy carb, w blue to black gtz, fractured, 80° and as blobs; pyrite diss. @ 1%; shearing hvy, silicification	694	1	278.6	281.9	3.3				
		@ 281.9 - 284.2 as above, 15% blue gtz, sl. buff carb	695	1	281.9	284.2	2.3				
		@ 284.2 - 286.9 as above, 1/8-1/4" bands of bl. gtz @ 60°, tr py	696	tr	284.2	286.9	2.7				
		* @ 286.9 - 288.5 Qtz 80%, gy wh, hvy chlorite inclusions, tourmaline, pyrite as 1/4" blebs and disseminated ± 2% tr ap.	697	2	286.9	288.5	1.6			0.042	
		@ 288.5 - 291.8 Gn gy carb; minor blue gtz str. tr py	698	tr	288.5	291.8	3.3				
		@ 317.6 - 321.3 Gn carb-rich, well sheared w gy. wh gtz carb veins, tourmaline, trace pyrite	709	tr	317.6	321.3	3.7				
326.0	333.5	<u>Pillow Andesite</u> ; med. gn; epidote a 1/4" along shear planes, occasional wh. gtz-carb vein with epidote; grades downward to carb-rich.									

LANGRIDGES - TORONTO - 366-1168

DIAMOND DRILL RECORD

NAME OF PROPERTY Buckingham Mine
 HOLE NO. B89-12 SHEET NO. 6

FOOTAGE		DESCRIPTION	SAMPLE			ASSAYS					
FROM	TO		NO.	% SULPHIDES	FOOTAGE		%	%	OZ. TON	OZ. TON	
					FROM	TO					TOTAL
333.5	350	<p><u>Carbonate Rich Rock</u>; medgygn to gngy; fine grd; minor blue wh qtz carb veins, trace pyrite; sheard @ 60°. 345.5-350 as above, tr py</p> <p><u>ENA Hde @ 350'</u></p>	710	T-	345.5	350.0	4.5				

DIAMOND DRILL RECORD

OM 87 - 334

NAME OF PROPERTY Buckingham Mine
 HOLE NO. B89-12 LENGTH 350'
 LOCATION 125' South of B9-10
 LATITUDE 20E DEPARTURE 1st 50S
 ELEVATION -22.89' AZIMUTH 360 DIP 45°
 STARTED Feb. 13 1989 FINISHED Feb 14 1989

FOOTAGE	DIP	AZIMUTH	FOOTAGE	DIP	AZIMUTH
150	42°				
347	42°				

HOLE NO. B89-12 SHEET NO. 1

REMARKS _____

LOGGED BY J.L. TINDALE

FOOTAGE		DESCRIPTION	SAMPLE			ASSAYS				
FROM	TO		NO.	% SULPHIDES	FOOTAGE		%	%	OZ/TON	OZ/TON
				FROM	TO	TOTAL				
0	41.0	Casing.								
41.0	67.0	<u>Carbonate Zone</u> ; f.g.; gngy, to gn ggy; well altered, heavy sheared in sections w buff carb. alteration; gtz veins throughout w blue, white, gy. white; wavy shearing where intense @ 45°; strong zone throughout.								
		@ 41.0-44.0 gngy, f.g., well sheared, silicified(?), minor buff carb alt ⁿ ; blue wh. gtz @ 70°, trace pyrite diss. tr. cps;	658	Tr	41.0	44.0	3.0	774	0.023	
		@ 44.0-49.2 gngy carb rock, blue gtz infills in fractures, 1/4" blue gtz @ 80°.	659	Tr	44.0	49.2	5.2	34		
		@ 49.2-53.8 as above, sharp blue: wh. gtz (1/4") @ 80°.	660	Tr	49.2	53.8	4.6	51		
		@ 53.8-56.6 increased sheared, as above, to buff carb	661	1	53.8	56.6	2.8	24		
		@ 56.6-58.2 <u>6" bl. sy gtz vein</u> , pyrite; w gngy carb.	662	1	56.6	58.2	1.6	20		
		@ 58.2-60.5 gngy carb, to diss pyrite; minor blue gtz	663	Tr	58.2	60.5	2.3	148		
		@ 60.5-64.0 as above	664	Tr	60.5	64.0	3.5	20		
		* @ 64.0-67.0 <u>highly sheared</u> ; buff carb alter, f.g. pyrite diss. Throughout; shearing @ 45°; blue gtz injected along planes, 9/11 blue gtz, at end section.	665	1	64.0	67.0	3.0	188		

DIAMOND DRILL RECORD

NAME OF PROPERTY Buckingham Mine
 HOLE NO. B 89-12 SHEET NO. 2

FOOTAGE		DESCRIPTION	SAMPLE				ASSAYS				
FROM	TO		NO.	% SULPH. IDES	FOOTAGE			%	%	OZ. TON	OZ. TON
					FROM	TO	TOTAL				
		69.3 @ 67.0 - Intense shearing, buff carb altm, serp. lining shear @ 45°; silicified; blue gtz str.;	666	1	67.0	69.3	2.3		593	.017	
		@ 69.3 - 71.0, 20% blue gy gtz in buff altered & hard rock, @ 45°, pyrite 1-2%	667	2	69.3	71.0	1.7		666 785	.019 .0023	
		@ 71.0 - 73.5; as above w irregular gy. wh gtz <u>tourmaline</u> , tr ps.	668	Tr	71.0	73.5	2.5		269	.008	
		@ 73.5 - 76.2 as above w minor gn. gy gtz, <u>tourmaline</u> , tr. cpd.	669	Tr	73.5	76.2	2.7		402	.012	
		@ 76.2 - 81.0 as above, zone weaker, minor buff carb.,	670	Tr	76.2	81.0	4.8		294	.009	
		@ 81.0 - 83.8 as above, irregular wh. gtz veins	671	Tr	81.0	83.8	2.8		28	.001	
		@ 83.8 - 87.0 as above, minor blue gtz	672	Tr	83.8	87.0	3.2		11	<.001	
87.0	107.0	<u>Pillowed Andesite</u> ; Green; sheared at 45° and injected w wh gtz-calc veins //d shearing; some pink calc w wh. gtz; epidote altm w veining; serpentinized sections (gn as gnss); red Fe str. & and inclusions of specular hematite noted w some veins; pyrite rare as dissemination w veins.	673	Tr	94.6	100.7	6.1		10	<.001	
			674	Tr	100.7	104.8	4.1		8	<.001	
107.0	147.0	<u>Carbonate-rich andesite</u> ; gy to gy gn; variable intensity of shearing @ 60°; wh, clear and gy gtz-calc veins along shearing; pyrite traces to 1% w associated veining; @ 117.5 - 119.3 sheared w pale gn carb rock, blue gy; clear gtz, tr. cpd @ 800	675	Tr	117.5	119.3	1.8		13	<.001	

DIAMOND DRILL RECORD

NAME OF PROPERTY Buckingham Miner
 HOLE NO. B99-12 SHEET NO. 3

FOOTAGE		DESCRIPTION	SAMPLE			ASSAYS					
FROM	TO		NO.	% SULPHIDES	FOOTAGE		%	%	OZ/TON	OZ. TON	
					FROM	TO					TOTAL
		① 121.8 - 125.3 Sheared gng rock w irregular wh. gtz w chlorite inclusions	676	Tr	121.8	125.3	3.5		839 737	0.024 0.021	
		① 133.0 - 135.0 moderately sheared; carbonate; blue gtz veins; @ 80°; traces pyrite; buff carb alt. inclusion in main vein.	677	Tr	133.0	135.0	2.8		210	.006	
		* ① 141.7 - 143.2 50% gtz, gy, clec. and minor blue w chlorite hug along shear planes; minor buff carb alt.; py 1%	678	1	141.7	143.2	1.5		174	.005	
		① 143.2 - 147.0 gng carb rock w several 1/4" gy gtz veins @ 60°. Tr py.	679	Tr	143.2	147.0	3.8		150	.004	
147.0	177.0	P. flowed Andesite; dk gn, gn; f. med gr; heavy epidote; scarp alteration; gy and white gtz-carb veins @ 45° preferred; traces of py.; minor Fe stain.									
		① 147-150.0; 25% gy wh. gtz-epidote veins; shear in trace spec. hematite, red stain. Note: lower contact gradational to carbonate-rich zone.	680	Tr	147.0	150.0	3.0		127	.004	
177.0	326	<u>Carbonate-Rich Zone</u> ; variable intensity of shearing; gy to gng; f.g.; blue gtz injected along shear planes @ 60°; pyrite increase from none to 2-3% in well sheared sections; minor buff carb alt. w intense shearing; wavy shearing in places;									

LANGRIDGES - TORONTO - 366-1168

DIAMOND DRILL RECORD

NAME OF PROPERTY Buckingham Mine
 HOLE NO. B89-12 SHEET NO. 4

FOOTAGE		DESCRIPTION	SAMPLE			ASSAYS					
FROM	TO		NO.	% SULPH. IDES	FOOTAGE			%	%	OZ. TON	OZ. TON
				FROM	TO	TOTAL					
		@190.0-192.7, ss. gn, carb-rich, 1/8" blue gtz strcs @ 60°; minor pyrite	681	Tr	190.0	192.7	2.7		90	.003	
		* @192.7-195.0 intense shearing; gy; blue gtz injected along shear planes; minor buff carb; pyrite 1%	682	1	192.7	195.0	2.3		238	.007	
		* @195.0-197.0 as above, flow banded, wavy, blue gtz along shear planes; tr. pyrite.	683	1	195.0	197.0	2.0		74	.002	
		* @197.0-198.7 30% blue gtz, fractured with chlorite-serp inclusions; pyrite 2% along shear planes,	684	2	197.0	198.7	1.7		56	.002	
		@198.7-200.7 Gy. gn, carbonate, minor blue gtz strcs, trap	685	Tr	198.7	200.7	2.0		14	<.001	
		<u>Strong Shear Zone</u>							13	<.001	
		@245.0-250 Gn. gy, massive, weakly sheared, strongly carbonated; minor wh. gy gtz-carb veins	686	Tr	245.0	250.0	5.0		25	.001	
		@250.0-252.5 as above, w blue gtz strcs, random orient.	687	Tr	250.0	252.5	2.5		20	.001	
		@252.5-255.6 as above, bleached, gy, pyrite 1%	688	1	252.5	255.6	3.1		321	.009	
		* @255.6-256.1 Blue gtz, w chlorite, buff alt'n, pyrite 3%; shearing @ 60°.	689	3	255.6	256.1	0.5		18700	0.544	
		* @256.1-257.5 Intensely sheared @ 70°, blue gtz injected along shear planes, minor buff alt'n; pyrite 2%	690	2	256.1	257.5	1.4		539	.016	

DIAMOND DRILL RECORD

NAME OF PROPERTY Buckingham Mines
 HOLE NO. 889-12 SHEET NO. 5

FOOTAGE		DESCRIPTION	SAMPLE			ASSAYS					
FROM	TO		NO.	% SULPHIDES	FOOTAGE			%	%	OZ./TON	OZ. TON
					FROM	TO	TOTAL				
		@ 257.5 - 258.9 Qtz, blue, gy, sheared, buff alteration, shearing @ 60°; pyrite clay streaks @ 2%	691	2	257.5	258.9	1.4			216	
		@ 258.9 - 261.1 Gn gy carb; wh gy gtz - tourmaline vein @ 30°, 1/2";	692	tr	258.9	261.1	2.2			24	
		@ 261.1 - 264.7 as above, minor gy gtz - tourmaline <u>Strong Shear Zone</u>	693	tr	261.1	264.7	3.6			23	
		@ 278.6 - 281.9 Gn. gy carb, w blue to black gtz, fractured, @ 80° and as blobs; pyrite diss. @ 1%; shearing hvy, silicification	694	1	278.6	281.9	3.3			632 638	.018 .020
		@ 281.9 - 284.2 as above, 15% blue gtz, sl. buff carb	695	1	281.9	284.2	2.3			49	
		@ 284.2 - 286.9 as above, 1/8 - 1/4" bands of bl. gtz @ 60°, tr py	696	T-	284.2	286.9	2.7			50	
		* @ 286.9 - 288.5 Qtz 80%, gy wh, hvy chlorite inclusions, tourmaline, pyrite as 1/4" blebs and disseminated ± 2% tr ap.	697	2	286.9	288.5	1.6			1429	0.042
		@ 288.5 - 291.8 Gn gy carb; minor blue gtz str. top	698	Tr	288.5	291.8	3.3			26	
		@ 317.6 - 321.3 Gn carb-rich, well sheared w gy. wh gtz carb veins, tourmaline, trace pyrite	709	T-	317.6	321.3	3.7			2.5	
326.0	333.5	<u>Pillow Andesite</u> ; med. gn; epidote 2 1/4" along shear planes, occasional wh. gtz - carb veins with epidote; grades downward to carb-rich.									

LANGRIDGE TORONTO - 366-1168

DIAMOND DRILL RECORD

NAME OF PROPERTY Buckingham Mine
 HOLE NO. B89-12 SHEET NO. 6

FOOTAGE		DESCRIPTION	SAMPLE			ASSAYS					
FROM	TO		NO.	% SULPHIDES	FOOTAGE		%	%	OZ/TON	OZ/TON	
				FROM	TO	TOTAL					
333.5	350	<p><u>Carbonate Rock</u> ; medgygn to gngy; fine-grd; minor blue wh gtz carb veins, trace pyrite; sheard @ 60°.</p> <p>345.5-350 as above, tr py</p> <p><u>End Hde @ 350'</u></p>	710	T-	345.5	350.0	4.5		15		

DIAMOND DRILL RECORD

NAME OF PROPERTY BUCKINGHAM MINE
 HOLE NO. B89-13 LENGTH 568
 LOCATION 125' SOUTH OF Hole # 12
 LATITUDE 20E DEPARTURE 12+75S
 ELEVATION -23.21' AZIMUTH 360° DIP 45°
 STARTED Feb. 14, 89 FINISHED Feb 15, 89

FOOTAGE	DIP	AZIMUTH	FOOTAGE	DIP	AZIMUTH
150	44				
397	42				

HOLE NO. B89-13 SHEET NO. 1

REMARKS _____

LOGGED BY J. L. TINDALE

FOOTAGE		DESCRIPTION	SAMPLE				ASSAYS				
FROM	TO		NO.	% SULPHIDES	FOOTAGE			%	%	OZ/TON	OZ/TON
					FROM	TO	TOTAL				
0	15.0	Casing									
15.0	26.2	Carbonate zone; tuffaceous; gn + pale gn; fig. i wh. to ss white gte veins with chlorite; minor tourmaline; occasional blue gn gte veins @ 60°; moderate shearing @ 60°. Tr py. @ 15.0 - 17.5 as above w 2, white gte veins @ 60°, tr py, chl. wh. sps @ 17.5 - 20.0 as above w gy wh gte, dk. gn host rock tr. py. @ 20.0 - 23.6 wh. sp. carbonate replacements and wh. g. c veins @ 23.6 - 26.2 minor 1/4" bloc wh. gte @ 60°, tr py.	699	Tr	15.0	17.5	2.5				
			700	Tr	17.5	20.0	2.5				
			701	Tr	20.0	23.6	3.6				
			702	Tr	23.6	26.2	2.6				
26.2	45.3	Tuff, non-carbonate; bright gn; w phenos of felds por. random and rare; phenos yellowish white; minor g-c veinlets; 2" g-c vein @ 80° @ 37'; red stain in fracture planes; spec. Fe along vein boundaries.									
45.3	54.7	Carbonate rich zone, sheared @ 70°; med. gn.; full of wh. sp. carb veinlets 1/2" to 1" to staining; minor gte-carb veins to 1/2" w tourmaline; yellow gn. epidote alt. w some staining; merc. tr. of pyrite.	703	Tr	45.3	50.2	4.9				
			704	Tr	50.2	54.7	4.5				

ONTARIO GEOLOGICAL SURVEY
 ASSESSMENT FILES
 OFFICE
 JUN 22 1989
 RECEIVED

LANGRIDGES - TORONTO - 386-1188

DIAMOND DRILL RECORD

NAME OF PROPERTY Buckingham Mine
 HOLE NO. B 89-13 SHEET NO. 2

FOOTAGE		DESCRIPTION	SAMPLE			ASSAYS					
FROM	TO		NO.	% SULPHIDES	FOOTAGE			%	%	OZ./TON	OZ./TON
					FROM	TO	TOTAL				
54.7	76.0	Tuff ps-pyritic, non carbonate, yellowwhite phenos as above from section 26.2-45.5. Red Fe stain prevalent.									
76.0	780.0	Carbonate-rich shear zone, partly brecciated, medium green; wh. gtz-carb as whisp veinlets, inclusions and veining; irregular orientations; traces buff carb alt? where shearing is intense; slickens @ 80°; more trace pyrite. Grades downward to pale gngy dense carb-rich rock w whispy wh. carb veins and bluegy gtz veins @ 70°. With good zone of shearing. @ 76.0-80.0 dkgn, carb rich w wh. gtz-carb veins per-fuse as whispy replacements, partly bx. @ 80.0-82.5 as above @ 82.5-86.0 narrow bands buff carb shear zones, @ 91.8-93.2 gngy carb-rich, w 2" gtz-carb vein @ 45° chitrich along steep planes, pyrite hug w vein. <u>Shear Zone</u> @ 127.0-130.5 well sheared, gngy, @ 90°; hairline blue gtz injected; fig. pyrite diss. throughout -133.0 * @ 130.5 Intensely sheared @ 45°; blue wh. g-c veining, buff. carb alt?, hug pyrite along shearing as cubes, and fig. diss. tr cpy. @ 133.0-134.0 Less shearing, pyrite 1%, more blue gtz									
			705	T-	76.0	80.0	4.0				
			706	T-	80.0	82.5	2.5				
			707	T-	82.5	86.0	3.5				
			708	T-	91.8	93.2	1.4				
			711	I	127.0	130.5	3.5				
			712	3	130.5	133.0	2.5				
			713	1	133.0	134.0	1.0				

DIAMOND DRILL RECORD

NAME OF PROPERTY Buckingham Mine
 HOLE NO. B87-13 SHEET NO. 3

FOOTAGE		DESCRIPTION	SAMPLE			ASSAYS				
FROM	TO		NO.	% SULPHIDES	FOOTAGE		%	%	OZ./TON	OZ./TON
				FROM	TO	TOTAL				
		<u>Intense Shear Zone</u>								
		@ 155.3 - 157.0 Gycarb, well sheared @ 45°; blucsy g-veins 1/4" and injected along partings; buff carb alt ² ; wavy sheenings; pyrite 1% diss, f.g.	714	1	155.3	157.0	1.7			
		@ 157.0 - 159.9; Gycarb, intensely flow banded, wavy; buff carb, blue gtz injections; irregular white ggy gtz calc veining; 1% diss pyrite. Tr opy.	715	1	157.0	159.9	2.9			0.060
		@ 159.9 - 162.9 Hvy sheared; ggy yellowish gn; partially brecciated; blue iat gtz injections; soft sheen; pyrite diss 1h-ov, but @ 1%; sheenings @ 60°. Tr opy.	716	1	159.9	162.9	3.0			0.047
		@ 162.9 - 165.8 similar to above, well sheared, 2% pyrite.	717	2	162.9	165.8	2.9			0.043
		@ 165.8 - 168.3 as above w 8" bl. ggy gtz-carb vein, buff carb alt ² along veins;	718	2	165.8	168.3	2.5			
		@ 168.3 - 174.0 v. f.g. gngy carb-rich, sheared @ 45°, irregular hairline blue gtz; tr py	719	Tr	168.3	174.0	5.7			
		@ 174.0 - 175.5 30% blue gtz-sheenings, wavy bx; 2% py.	720	2	174.0	175.5	1.5			
		@ 175.5 - 178.4 Gradational to underlying pillow andesite; wh. gtz-carb veins, irregular with inclusions of host rock. Tr py. Tr opy. Tourmaline in gtz veins.	721	Tr	175.5	178.4	2.9			
1800	205.8	<u>Pillowed Andesite</u> ; dkign; epidote alt ² . characteristic of interval in pink: wh. gve veins; wispy carb veins, red fc stain; specular hematite in some veins; tr diss. pyrite.								

LANGRIDGES - TORONTO - 366-1188

DIAMOND DRILL RECORD

NAME OF PROPERTY: Buckingham Mine
 HOLE NO. B89-13 SHEET NO. 4

FOOTAGE		DESCRIPTION	SAMPLE				ASSAYS				
FROM	TO		NO.	% SULPH. IDES	FOOTAGE			%	%	OZ./TON	OZ./TON
					FROM	TO	TOTAL				
265.8	277	<p><u>Carbonate-rich tuffaceous(?) zone</u>, fine grained; gy gn; in fills of blue, wh, clear gtz in brittle fractures; well veined w hairline and waxy gtz-carb veins; tr pyrite thin, hot;</p> <p>@ 218.7-224.0 as above w clear to white gtz @ 60° and tourmaline rich gtz vein @ 20°. Tr py, eps.</p> <p><u>Moderate Shear Zone</u></p> <p>2144.0-246.4 Gy to gy gn; fine grnd; tr py, shear @ 60°; wh gtz, tr eps</p> <p>* 246.4-248.7 well shear-ed; yellowish buff carb alt°; gy. white gtz, tr py, minor blue wh gtz, waxy clear</p> <p>248.7-253.6 Moderate shear; gy gn, minor by blue wh gtz</p> <p>253.6-256.3 as above</p> <p>256.3-258.7 as above w 6" wh gtz-carb vein @ 45°</p>									
277.0	297.0	<p><u>Andesite pillowed</u>; med. gn to dk gn; foliated @ 40°; wh. g-c veins irregular through section; non-carbonated, traces eps, ps, as in veins; minor gr. yellow alt° along pillow selvages; grades into carbonate-rich rock.</p>	722	T-	218.7	224.0	5.3				
			723	T-	244.0	246.4	2.4				
			724	I	246.4	248.7	2.3				
			725	T-	248.7	253.6	4.9				
			726	T-	253.6	256.3	2.3				
			727	T-	256.3	258.7	2.4				

DIAMOND DRILL RECORD

NAME OF PROPERTY Buckingham Mine
 HOLE NO. 1389-13 SHEET NO. 5

FOOTAGE		DESCRIPTION	SAMPLE				ASSAYS			
FROM	TO		NO.	% SULPH. IDES	FOOTAGE		%	%	OZ./TON	OZ. TON
					FROM	TO				
297.0	325.3	Moderately carbonate-rich zone; gytogyr; tuffaceous intervals; chlorite w wavy g.-c. stringers; occasional blue gtz w carb, chl @ 60°; some gash-like infills of blue gtz; minor tourmaline; some good pyrite conc. around veins;								
		297.0-299.5 Gngy carb rich, wavy shear partings w pyrite, wh carbonate infills;	728	Tr	297.0	299.5	2.5			
		299.5-304.2 as above w blue gtz veins and inclusions, tr py, suggesting tuffaceous banding	729	Tr	299.5	304.2	4.7			
		304.2-307.0 as above, less blue gtz								
		307.0-309.1 denser, f.g. carb, pale gngy, gash fills of blue gtz, 1" bl gtz vein @ 80°, tr py.	730	Tr	307.2	307.0	2.8			
		317.0-320.3 Gngy carb-rich; str. g.-c; minor blue gtz @ 45°-70°; chl. w veins, pyrite dis. in ur.	731	Tr	307.0	309.1	2.1			
		317.0-320.3 Gngy carb-rich; str. g.-c; minor blue gtz @ 45°-70°; chl. w veins, pyrite dis. in ur.	732		317.0	320.3	3.3			
		320.3-323.1 as above, pyrite 1% dis, 1/8" blue gtz st-	733	I	320.3	323.1	2.8			
		323.1-325.3 as above; grad. to less carb-rich, wh. sp irregular gtz-carb, tourmaline veining	734	Tr	323.1	325.3	2.2			
325.3	370.0	(pyrite in tuff) Andesite (pillowed?); gng yellowish serp, epidote alt, partially sheared w wh gtz-carb veinlets random orientation; red Fe staining spec. hematite traces; dense, massive w yellowish wh pheres down hole								

DIAMOND DRILL RECORD

NAME OF PROPERTY Buckingham Mines
 HOLE NO. B89-13 SHEET NO. 6

FOOTAGE		DESCRIPTION	SAMPLE			ASSAYS				
FROM	TO		NO.	% SULPHIDES	FOOTAGE		%	%	OZ./TON	OZ./TON
				FROM	TO	TOTAL				
370.0	452.0	Carbonate-Rich; gngy to pale gn; pale w increase in shearing; veined w blue gy gtz-carb.; also blue gtz filling gash veins; wh. gtz carb veins @ 80°; shearing @ 60°; pyrite as disseminated cubes in wall rock; buff carb. cils in intense shear zones;								
		@ 385.7-388.3 U.f.g; gngy, irregular blue wh. gtz, chlorite huy around gtz and as inclusions in veins; disseminated pyrite, traces cpy.	735	Tr	385.7	388.3	2.5			
		* @ 388.3-390.5 Intense shear; buff carb traces along shear planes; wavy shear planes; blue gy gtz w chlorite inclusions; pyrite huy along shear planes; diss. in veins; 30% gtz; tr cpy.	736	2	388.3	390.5	2.2			
		@ 390.5-392.5 Grey carb rich, 2% diss. pyrite; blue gy gtz veining irregular, fractured, @ 70°; tr cpy.	737	2	390.5	392.5	2.0			
		@ 392.5-396.5 Grey gn, carb, as above, tr pyrite, blue gtz as irregular fracture fillings;	738	Tr	392.5	396.5	4.0			
		@ 396.5-398.7 Gngy, dense, 15% blue gtz, irregular and @ 80° 1% py. diss	739	1	396.5	398.7	2.2			
		@ 398.7-401.8 as above, 10% blue gtz, tr py	740	Tr	398.7	401.8	3.1			
		@ 401.8-405.3 as above 5% " " , tr py, tr cpy.	741	Tr	401.8	405.3	3.0			
		@ 405.3-409.4 as above, poorly sheared, tr. tourmaline in wh. g-c.	742	Tr	405.3	409.4	4.1			

LANGRIDGES - TORONTO - 366-1168

DIAMOND DRILL RECORD

NAME OF PROPERTY Buckingham Mines
 HOLE NO. B89-13 SHEET NO. 7

FOOTAGE		DESCRIPTION	SAMPLE			ASSAYS					
FROM	TO		NO.	% SULPH. IDES	FOOTAGE			%	%	OZ./TON	OZ./TON
					FROM	TO	TOTAL				
		@409.4-412.2 as above w wh. gtz - hvy tourmaline vein 11cl to core, tr-py, cpy w veins.	743	Tr	409.4	412.2	2.8				
		@412.2-414 moderately sheared, streaked wgtz-calc, chlorite tr-py	744	Tr	412.2	414.0	1.8				
		@420.8-424.8 DK gn, carb-rich, w whgtz veins, moderate pyrite, minor tourmaline, sharp veins @70°; veins from 1" to 6"; moderately sheared.	745	Tr	420.8	424.8	4.0				
		@429.0-432.5 Gngy, well sheared, blngtz injected, minor pyrite; chlorite hvy altz partly to yellowish serp. tr-cpy.	746	Tr	429.0	432.5	3.5				
		@436.7-438.3 moderately sheared, gngy, blngtz bx, irregular along shear planes; and as wispy hairline veinlets along fracture planes @ 80°	747	Tr	436.7	438.3	1.6				
@452.0	@470.0	^{iPillowed} Tuffaceous andesite, massive, noncarbonate, med. gn. w wavy 1/4" wh gtz-calc veins; possibly grading to pillowed andesite; numerous irregular gngy wh. glaucous veins w epidote-serp altz; e.g. pyrite disseminated in veins; becomes sl. porphyritic downward.									
		@485.0-488.7 Major gtz-calc vein; ggy white to white to purplish white; hvy tourmaline; chlorite inclusions hvy throughout; tr. pyrite.	748	Tr	485.0	488.7	3.7				

DIAMOND DRILL RECORD

NAME OF PROPERTY Buckingham Mine
 HOLE NO. B89-13 SHEET NO. 8

FOOTAGE		DESCRIPTION	SAMPLE			ASSAYS					
FROM	TO		NO.	% SULPH. IDES	FOOTAGE			%	%	OZ./TON	OZ./TON
					FROM	TO	TOTAL				
547.0	561.6	<p><u>Carbonate-rich Zone</u>; highly sheared at base of interval, gr. g to pale gn; appears tuffaceous; numerous gy and wh. gtz veins @ 70°; strong shears @ 70°; minor blue gy gtz veins in streaks in intense shear; pyrite trace to 1% in hyp. shear.</p> <p>@ 550.8 - 553.3 gr. ggy, mod. shear, several 1/4" wh. gtz veins @ 70°</p> <p>@ 553.3 - 556.2 well sheared section, minor blue gtz irregular veins and gy wh gtz-carb. frag</p> <p>@ 556.2 - 558.7 weakly sheared, ggy, hardening @ 70°</p> <p>* @ 558.7 - 561.6 Intensely sheared, wavy flow banding in places; buff carb traces, pyrite clots streaks, blue gtz injected in narrow shear planes; 1 1/2" wh gtz at end of interval w pyrite 1%</p>									
			749	Tr	550.8	553.3	2.5				
			750	Tr	553.3	556.2	2.9				
			751	Tr	556.2	558.7	2.5				
			752	Tr	558.7	561.6	2.9				
561.6	568.0	<p><u>Talc Peridotite</u>, well sheared over initial 1 foot, spotted white dk gn matrix, soft, occasionally brassy.</p> <p>@ 561.6 - 562.6 sheared w gtz-act veins, tr. py.</p> <p><u>END hole @ 568.0</u></p>									
			753	Tr	561.6	562.6	1.0				

DIAMOND DRILL RECORD

OM 87-334

NAME OF PROPERTY BUCKINGHAM MINE
 HOLE NO. B89-13 LENGTH 568
 LOCATION 125' SOUTH OF Hole # 12
 LATITUDE 20E DEPARTURE 12+75S
 ELEVATION -23.21' AZIMUTH 360° DIP 45°
 STARTED Feb. 14, 89 FINISHED Feb 15, 89

FOOTAGE	DIP	AZIMUTH	FOOTAGE	DIP	AZIMUTH
150	44				
397	42				

HOLE NO. B89-13 SHEET NO. 1

REMARKS _____

LOGGED BY J. L. TINGALE

FOOTAGE		DESCRIPTION	SAMPLE			ASSAYS				
FROM	TO		NO.	% SULPHIDES	FOOTAGE FROM TO TOTAL	%	%	OZ/TON	OZ/TON	
0	15.0	Casing								
15.0	26.2	Carbonate zone; ferruginous; gn + pale gn; f.g. is wh. to gy white gtz veins with chlorite; minor tourmaline; occasional bluegy gtz veins @ 60°; moderate shearing @ 60° Trps. @ 15.0 - 17.5 as above w 2, white gtz veins @ 60°, trps, chl wh.sps @ 17.5 - 20.0 as above w gy wh gtz, dk. gn host rock tr. py. @ 20.0 - 23.6 whispy carbonate replacements and wh. gtz veins @ 23.6 - 26.2 minor "y" blue wh. gtz @ 60°, tr. py.	699	Tr	15.0	17.5	2.5		19	
			700	Tr	17.5	20.0	2.5		19	
			701	Tr	20.0	23.6	3.6		41	
			702	Tr	23.6	26.2	2.6		8	
26.2	45.3	Tuff, non-carbonate; bright gn; w phenos of felds, potanodon and mica; phenos yellowish white; minor gtz veinlets; 2" gtz vein @ 80° @ 37'; red stain of fracture planes; sparse Fe atons, vein boundaries.								
45.3	54.7	Carbonate rock zone, sheared @ 70°, med. gn.; full of whispy carb veinlets // to shearing; minor gtz-carb veins to 1/2" w tourmaline; yellow gn. epidote alt w some mica; merc. of pyrite.	703	Tr	45.3	50.2	4.9		7	
			704	Tr	50.2	54.7	4.5		8	

LANGRIDGES - TORONTO - 368-1188

DIAMOND DRILL RECORD

NAME OF PROPERTY Buckingham Mine
 HOLE NO. B 89-13 SHEET NO. 2

FOOTAGE		DESCRIPTION	SAMPLE			ASSAYS				
FROM	TO		NO.	% SULPH. IDES	FOOTAGE		%	%	OZ./TON	OZ. TON
					FROM	TO				
54.7	76.0	Tuff porphyritic, non carbonate, yellowwhite phenos as above from section 26.2-45.3. Red Fe stain prevalent.								
76.0	180.0	Carbonate-rich shear zone, partly brecciated & medium green, wh. gtz-carb as whisp veinlets, inclusions and veining; irregular orientations; traces buff carb alt? where shearing is intrusive; slickens, @ 80°; trace pyrite. Grades downward to pale gngy dense carb-rich rock w whispy wh. carb veins and bluegy gtz veins @ 70°. With good zones of shearing.								
		@ 76.0-80.0 dkgn, carbonrich w wh. gtz-carb veins per-fuse as whispy replacements, partly bx.	705	T-	76.0	80.0	4.0		8	
		@ 80.0-82.5 as above								
		@ 82.5-86.0 narrow bands buff carb shear zones,	706	T-	80.0	82.5	2.5		24	
			707	T-	82.5	86.0	3.5		5	
		@ 91.8-93.2 gngy carb-rich, w 2" gtz-carb vein @ 45° chrt. rich along shear planes, pyrite lugs w vein	708	T-	91.8	93.2	1.4		57	
		<u>Shear Zone</u>								
		@ 127.0-130.5 well-sheared, gngy, @ 90°, thin blue gtz injected; f.g. pyrite diss. throughout	711	T	127.0	130.5	3.5		10	
		-133.0								
		* @ 130.5 Intensely sheared @ 45°; blue wh. g-c veining, buff. carb alt? by pyrite along shearing as cubes, and f.g. diss. tr cpy.	712	3	130.5	133.0	2.5		250 249	
		@ 133.0-134.0 less shearing, pyrite 1%, more blue gtz	713	1	133.0	134.0	1.0		27	

LANGRISHES - TORONTO - 395-1168

DIAMOND DRILL RECORD

NAME OF PROPERTY Buckingham Mines

HOLE NO. B89-13 SHEET NO. 3

FOOTAGE		DESCRIPTION	SAMPLE			ASSAYS					
FROM	TO		NO.	% SULPHIDES	FOOTAGE		%	%	OZ/TON	OZ/TON	
				FROM	TO	TOTAL					
		<u>Intense Shear Zone</u>									
		@ 155.3-157.0 Gycarb, well sheared @ 45°; blaesy g-c veins 1/4" and injected along partings; buff carb alt ² ; wavy shearing; pyrite 1% diss, fig.	714	1	155.3	157.0	1.7		28		
		@ 157.0-159.9; Gycarb, intensely flow banded, wavy; buff carb, blue gtz injection; irregular white ggy gtz calc veining; 1% diss pyrite. Tr opy.	715	1	157.0	159.9	2.9		2057	0.060	
		@ 159.9-162.9 Huy sheared; ggy yellowish gn; partially brecciated; blue wh gtz-c injection; soft shear; pyrite diss 1h-uv, but @ 1%; shearing @ 60° Tr opy.	716	1	159.9	162.9	3.0		1600	0.047	
		@ 162.9-165.8 similar to above, well sheared, 2% pyrite.	717	2	162.9	165.8	2.9		1484	0.043	
		@ 165.8-168.3 as above w 8" bl. ggy gtz-carb vein, buff carb alt ⁿ along veins;	718	2	165.8	168.3	2.5		31		
		@ 168.3-174.0 v. fig. gngycarb-rich, sheared @ 45°, irregular hairline blue gtz, tr py	719	Tr	168.3	174.0	5.7		22		
		@ 174.0-175.5 30% blue gtz-shearing, wavy bx; 2% py.	720	2	174.0	175.5	1.5		240		
		@ 175.5-178.4 Gradational to underlying pillow andesite, wh. gtz-carb veins, irregular with melanite of host rock. Tr py. Tr opy. Tourmaline in gtz veins.	721	TV	175.5	178.4	2.9		29	19	
1800	205.8	<u>Pillowed Andesite</u> ; dk. gn; epidote alt ² characteristic of interval in part; wh. g-c veins; whispy carb veins, red Fe stain; specular hematite in some veins; tr diss. pyrite.									

DIAMOND DRILL RECORD

NAME OF PROPERTY Buckingham Mine
 HOLE NO. B89-13 SHEET NO. 4

FOOTAGE		DESCRIPTION	SAMPLE			ASSAYS						
FROM	TO		NO.	% SULPHIDES	FOOTAGE			%	OZ. TON	OZ. TON		
					FROM	TO	TOTAL					
205.8	277	<p>Carbonate-rich tuffaceous(?) zone, fine grained; gy gn; in fills of blue, wh, clear gtz in brittle fractures; well veined w hairline and waxy gtz-carb veins; tr pyrite thru, dot;</p> <p>@ 218.7-224.0 as above w clear to white gtz @ 60° and tourmaline rich gtz vein @ 20°. Tr py, cps.</p> <p><u>Moderate Shear Zone</u></p> <p>@ 244.0-246.4 Gy to gy gn; fine grnd; tr py, shear @ 60°; wh gtz, tr cps</p> <p>* @ 246.4-248.7 well sheared; yellowish buff carb alt°; gy. white gtz, tr py, minor blue wh gtz, waxy clear</p> <p>@ 248.7-253.6 Moderate shear; gy gn, minor by blue wh gtz</p> <p>@ 253.6-256.3 as above</p> <p>@ 256.3-258.7 as above w 6" wh gtz-carb vein @ 45°</p>	722	T-	218.7	224.0	5.3				57	
			723	T-	244.0	246.4	2.4				518	
			724	I	246.4	248.7	2.3				209	
			725	T-	248.7	253.6	4.9				17	
			726	T-	253.6	256.3	2.3				10	
			727	Tr	256.3	258.7	2.4				10	
277.0	297.0	<p>Andesite pillowed; med gn to dk gn; foliated @ 40°; wh. g-c veins irregular through section; non-carbonated, tr cps, no in veins; minor gn yellow alt° along pillow selvages; grades into carbonate-rich rock.</p>										

DIAMOND DRILL RECORD

NAME OF PROPERTY Buckingham Mine
 HOLE NO. 1389-13 SHEET NO. 5

FOOTAGE		DESCRIPTION	SAMPLE			ASSAYS				
FROM	TO		NO.	% SULPHIDES	FOOTAGE		%	%	OZ. TON	OZ. TON
				FROM	TO	TOTAL				
297.0	325.3	Moderately Carbonate-rich zone; gy to ggn; tuffaceous intervals; chlorite w wavy g.-c. stringers; occasional blue gtz w carb, chl @ 60°; some gash-like infills of blue gtz; minor tourmaline; some good pyrite conc. around veins;								
		@ 297.0-299.5 Gngy carb rich, wavy sheer partings w pyrite, wh carbonate infills,	728	Tr	297.0	299.5	2.5		14	
		@ 299.5-304.2 as above w bluegy gtz veins and inclusions, tr py, suggestion of tuffaceous banding	729	Tr	299.5	304.2	4.7		12	
		@ 304.2-307.0 as above, less blue gtz								
		@ 307.0-309.1 denser, f.g. carb, pale gngy, gash fills of blue gtz, 1" bl gy gtz vein @ 80°, tr py	720	Tr	304.2	307.0	2.8		29	22
		@ 317.0-320.3 Gngy carb-rich; str. g.-c; minor bluegy gtz @ 45-70°; chl. w veins, pyrite dis. in ur.	731	Tr	307.0	309.1	2.1		552	
		@ 317.0-320.3 Gngy carb-rich; str. g.-c; minor bluegy gtz @ 45-70°; chl. w veins, pyrite dis. in ur.	732	Tr	317.0	320.3	3.3		154	
		@ 320.3-323.1 as above, pyrite 1% dis, 1/8" bluegtz st-	733	I	320.3	323.1	2.8		474	
		@ 323.1-325.3 as above; grading to less carb rich, wh. sp irregular gtz carb, tourmaline veining	734	Tr	323.1	325.3	2.2		9	
325.3	370.0	(pyritic tuff) Andesite (pillowed?); gn; yellowish sarp, epidote alt, partially sheared w wh. gtz. calc vesiculate random orientation; red fm staining spec. hematite traces; dense, massive w yellowish wh pheros down hole								

LANGRISHES - TORONTO - 366-1168

DIAMOND DRILL RECORD

NAME OF PROPERTY Buckingham Mines
 HOLE NO. B89-13 SHEET NO. 6

FOOTAGE		DESCRIPTION	SAMPLE			ASSAYS					
FROM	TO		NO.	% SULPH. IDES	FOOTAGE			%	%	OZ. / TON	OZ. / TON
				FROM	TO	TOTAL					
370.0	452.0	<p><u>Carbonate Rich</u>; gngy to pale gm; paler w increase in shearing, veined w blue gy gtz-carb.; also blue gy filling gash veins, wh. gtz carb veins @ 30°; shearing @ 60°; pyrite as disseminated cubes in wall rock; buff carb. c. 1% in intense shear zones;</p> <p>@ 385.7-388.3 U.f.g; gngy, irregular blue wh. gtz, chlorite hug around gtz and as inclusions in veins; disseminated pyrite, traces cpy.</p> <p>* @ 388.3-390.5 <u>Intense shear</u>; buff carb traces along shear planes, wavy shear planes; blue gy gtz w chlorite inclusions; pyrite hug along shear planes; dis. in veins; 30% gtz; tr cpy.</p> <p>@ 390.5-392.5 Grey carb rich, 2% diss. pyrite; blue gy gtz veins, irregular, fractured, @ 70°; tr cpy.</p> <p>@ 392.5-396.5 Grey gn, carb, as above, trip. pyrite, blue gtz as irregular fracture fillings;</p> <p>@ 396.5-398.7 Gngy, dense, 15% blue gtz, irregular and @ 60° trip. dis.</p> <p>@ 398.7-401.8 as above, 10% blue gtz, trip.</p> <p>@ 401.8-405.3 as above 5% " " , trip. tr cpy.</p> <p>@ 405.3-409.4 as above, poorly sheared, tr. tourmaline in wh. g-c.</p>									
			735	Tr	385.7	388.3	2.5			91	
			736	2	388.3	390.5	2.2			200	
			737	2	390.5	392.5	2.0			110	
			738	Tr	392.5	396.5	4.0			9	
			739	1	396.5	398.7	2.2			289	265
			740	Tr	398.7	401.8	3.1			532	
			741	Tr	401.8	405.3	3.5			18	
			742	Tr	405.3	409.4	4.1			7	

LANGRIDGES - TORONTO - 366-1188

DIAMOND DRILL RECORD

NAME OF PROPERTY Buckingham Mines
 HOLE NO. B89-13 SHEET NO. 7

FOOTAGE		DESCRIPTION	SAMPLE			ASSAYS					
FROM	TO		NO.	% SULPH. IDES	FOOTAGE			%	%	OZ./TON	OZ. TON
					FROM	TO	TOTAL				
		@409.4-412.2 as above w wh. gtz - heavy tourmaline vein 11cl to core, Tr py, Cpy w veins.	743	Tr	409.4	412.2	2.8		6		
		@412.2-414 moderately sheared, streaked w gtz-act, chlorite Tr py	744	Tr	412.2	414.0	1.8		25		
		@420.8-424.8 DK gn, carb-rich, w whgtz veins, moderate pyrite, minor tourmaline, sharp veins @70°; veins from 1" to 6"; moderately sheared.	745	Tr	420.8	424.8	4.0		5		
		@429.0-432.5 Gngy, well sheared, blugtz injected, minor pyrite; chlorite by altz partly to yellowish scarp. tr cpy.	746	Tr	429.0	432.5	3.5-		8		
		@436.7-438.3 moderately sheared, gngy, blugtz bx, irregular along shear-planes; and as wispy hairline veinlets along fracture planes @ 80°	747	Tr	436.7	438.3	1.6		84		
@452.0	@470.0	^{iPillowed} Tuffaceous andesite, massive, noncarbonate, med. gn. j w wavy 1/4" wh gtz-act veins; possibly grading to <u>pillowed andesite</u> ; numerous irregular gy wh gtz-act veins w epidote-vein altz (e.g. pyrite disconnected in veins; becomes sl. porphyritic downward.									
		@485.0-488.7 Major gtz-act vein; gy white to white to purplish white; heavy tourmaline; chlorite inclusions by throughout; tr. pyrite.	748	Tr	485.0	488.7	3.7		5 25		

DIAMOND DRILL RECORD

NAME OF PROPERTY Buckingham Mine
 HOLE NO. B89-13 SHEET NO. 8

FOOTAGE		DESCRIPTION	SAMPLE			ASSAYS					
FROM	TO		NO.	% SULPH. IDES	FOOTAGE			%	%	OZ. TON	OZ. TON
					FROM	TO	TOTAL				
547.0	561.6	<p><u>Carbonate-rich Zone</u>; huily sheared at base of interval, gn. gy to pale gn; appears tuffaceous; numerous gy and wh. gtz veins @ 70°; strong shears @ 70°; minor blue gy gtz veins in shears in intense shear; pyrite trace to 1% in hyp. shear.</p> <p>@ 550.8 - 553.3 gn gy, mod. shear, several 1/4" wh gtz veins @ 70°</p> <p>@ 553.3 - 556.2 well sheared section, minor blue gtz irregular veins and gy wh gtz-carb. frags</p> <p>@ 556.2 - 558.7 weakly sheared, gy gn, hardening @ 70°</p> <p>* @ 558.7 - 561.6 Intensely sheared, wavy flow banding in places; buff carb traces, pyrite clots shears, blue gtz injected in narrow shear planes; 1 1/2" wh gtz at end of interval w pyrite 1%</p>									
			749	Tr	550.8	553.3	2.5		8		
			750	Tr	553.3	556.2	2.9		285		
			751	Tr	556.2	558.7	2.5		23		
			752	Tr	558.7	561.6	2.9		76		
561.6	568.0	<p><u>Talc Peridotite</u>, well sheared over initial 1 foot, spotted white idk gn matrix, soft, occasional bx frags.</p> <p>@ 561.6 - 562.6 sheared w gtz-act veins, Tr. fr.</p> <p><u>END hole @ 568.0</u></p>									
			753	Tr	561.6	562.6	1.0		7		

DIAMOND DRILL RECORD

NAME OF PROPERTY BUCKINGHAM MINE
 HOLE NO. B89-14 LENGTH 400'
 LOCATION Eastward extn
 LATITUDE 24E DEPARTURE 12+00S
 ELEVATION -23.76' AZIMUTH 360 DIP -45°
 STARTED Feb 16/89 FINISHED Feb 17/89

FOOTAGE	DIP	AZIMUTH	FOOTAGE	DIP	AZIMUTH
150	44				
387	42				

HOLE NO. B89-14 SHEET NO. 1
 REMARKS _____

LOGGED BY J. L. TINDALE

FOOTAGE		DESCRIPTION	SAMPLE				ASSAYS			
FROM	TO		NO.	% SULPHIDES	FOOTAGE		%	%	OZ/TON	OZ/TON
					FROM	TO				
0	10.0	Casing								
10.0	64.0	MATAHEWAN DIABASE - Chilled contact.								
64.0	127.0	Andesite; dk gn to med. gn; sheared partially @ 60°; minor wispy wh. gtz-ecle veinlets; some sharp gtz-ecle @ 60° (4"); chlorite alteration in veins and shearing partially converted to serpentine; traces disseminated pyrite throughout; occasional speck of cpy in veins;								
127.0	176.0	Tuffaceous; carbonate-rich; sheared intensely over intervals w buff carb alt ⁿ ; occasional gywh gtz veins locally mineralized w pyrite; minor blocky gtz veins; pyrite disseminated in wall rock; tr. cpy;								
		@ 134.2-137.0 Moderately carbonatized; w 2, 1/2 gywh gtz veins w tiny pyrite @ 45°; section weakly sheared	754	1	134.2	137.0	2.8			
		@ 137.0-140 Gygn, carbonate, w irregular gy. wh. gtz-ec. veins, traces tourmaline, cpy, py.	755	1	137.0	140.0	3.0			
		@ 140.0-140.9 80% gywh gtz, cpy, py, chlorite inclusions, gy mineral traces.	756	2	140.0	140.9	0.9			
		@ 140.9-143.3 Gn. gy carb rock, w irregular gywh gtz-ec vein @ ± 45°; pyrite tiny in vein; diss. throughout Tr cpy	757	2	140.9	143.3	2.4			

ONTARIO GEOLOGICAL SURVEY
 ASSESSMENT FILES
 OFFICE
 JUN 22 1989
 RECEIVED

LANGRIDGES - TORONTO - 366-1188

DIAMOND DRILL RECORD

NAME OF PROPERTY Buckingham
 HOLE NO. B09-14 SHEET NO. 2

FOOTAGE		DESCRIPTION	SAMPLE			ASSAYS					
FROM	TO		NO.	% SULPH IDES	FOOTAGE			%	%	OZ./TON	OZ./TON
					FROM	TO	TOTAL				
		@ 143.3-147.0 fairly massive gngy carb-rich, w 2 gng wh gtz-c. veins w hyp pyrite; pyrite disc. throughout, cpy. cpy hyp in veins.	758	2	143.3	147.0	3.7				
		@ 147.0-151.7 as above, sl. decrease in pyrite, single 4" gng wh gtz @ 45°	759	1	147.0	151.7	4.7				
		* @ 151.7-154.3 more sheared, minor yellowish buff alt ⁿ around veins; partially bx, irregular gng wh gtz-calc veins w hyp pyrite; chlorite hyp.	760	2	151.7	154.3	2.6				
		@ 154.3-156.6 less sheared, gngy carb, disc. py; 20% gtz-c as sharp veins @ 45°; chlorite inclusions;	761	2	154.3	156.6	2.3				
		@ 156.6-161.2 moderate shearing; to tourmaline; t. py. gn.	762	1	156.6	161.2	4.6				
		@ 161.2-167.0 dk gn, sl. carbonated, pink calc veins minor wh gtz tourmaline 4" veins	763	T-	161.2	167.0	5.8				
		@ 167.0-170.3 dk. gn, reddish iron stain, minor 4" bl. sy gtz @ 45° broken core	764	T-	167.0	170.3	3.3				
		@ 170.3-172.0 well sheared, yellowish buff alt ⁿ , shearing @ 40°; blues to pinkish, sacrositic gtz-calc; hyp pyrite w veins.	765	2	170.3	172.0	1.7				
		@ 172.0-176.0 moderate sheared, minor buff alt ⁿ , t. py; white gtz carb veins @ 45°	766	1	172.0	176.0	4.0				
176.0	201.5	<u>Pillowed Andesite</u> ; hyp reddish stain along fractures from Fe; med. gn; well fractured w spec, hematite, minor gsch fillings of gngt-calc.									

DIAMOND DRILL RECORD

NAME OF PROPERTY Buckley Hill
 HOLE NO. B89-14 SHEET NO. 3

FOOTAGE		DESCRIPTION	SAMPLE			ASSAYS					
FROM	TO		NO.	% SULPH IDES	FOOTAGE			%	%	OZ./TON	OZ./TON
					FROM	TO	TOTAL				
201.5	216.0	<p>Pale grey to ggy <u>Carbonate Shear-Zone</u>; w minor yellowish gn to buff alt^s along shear planes @ 45-60°; gtz-carb veins; white to ggy white; by veins in part, pyrite well developed in shear zone w veins.</p> <p>@ 205.0-208.0 Gngy carb rich, moderately sheared, w ggy wh. gtz-calc veins @ 60°; minor chlorite; trace</p> <p>* @ 208.0-209.7 well sheared, 20% gtz, ggy wh, chlorite incl, yellowish waxy alt^s; pyrite 1%, veins @ 70° // to shearing.</p> <p>* @ 209.7-211.4 well sheared; 15% gn wh to ggy wh gtz along shear planes; hvy yellow buff alt^s w veins; 1% py. disseminated.</p> <p>@ 211.4-215.8 poorly sheared, gn to ggy, minor gn wh gtz, pyrite tr</p>									
			767	tr	205.0	208.0	3.0				
			768	1	208.0	209.7	1.7				
			769	1	209.7	211.8	2.1			0.038	
			770	Tr	211.4	215.8	4.4				
216.0	254.0	<p><u>Pillowed Andesite</u> as above w red Fe-stain few specular hematite; dk. gn; grades downward to increasing carbonate.</p> <p>@ 228.2-229.6 weak shear zone, carbonate rich; w pink wh. sacrosic gtz-calc vein, 2" @ 45° to pg.</p>									
			771	Tr	228.2	229.6	1.4				
254.0	271.2	<p><u>Carbonic Zone</u>; pale gn to gngy, sheared in sections best developed @ lower contact; ggy wh. to pinkish white g-c. veins, 6" to 8" at intervals; minor wh. g.c. veins @ 45°; along shearing; pyrite diss., best w veins.</p>									

LANGRIDGES - TORONTO - 366-1168

DIAMOND DRILL RECORD

NAME OF PROPERTY Buckingham Mines
 HOLE NO. BE9-14 SHEET NO. 4

FOOTAGE		DESCRIPTION	SAMPLE			ASSAYS					
FROM	TO		NO.	% SULPHIDES	FOOTAGE			%	%	OZ. TON	OZ. TON
					FROM	TO	TOTAL				
		@ 254.0-257.0 moderately sheared, ggy gn; 8" pkgywh gtz-c. vein @ 45°; minor bl. wh. gtz in vein along shearing; tr. tourmaline in veins; tr. pyrite in veins; chlorite-rich inclusions in veins.	772	T-	254.0	257.0	3.0				
		268.5-271.2 Shear Zone, carb-rich; 20% gtz-carb veins as 8" banded ggy wh w pinkish tinge, gn chlorite streaks and inclusions; hyp pyrite along shearing @ 60° at end of large vein; trace buff carb at 11 1/2;	773	1	268.5	271.2	2.7				
271.2	309.0	<u>Tak-Peridotite</u> , dk gn w white speckled; sheared wavy banded; wh gtz-calc veining; traces pyrite:									
		@ 271.2-273.4 sheared and bleached, trace py, minor g-c veins @ 45°	774	Tr	271.2	273.4	2.2				
		@ 273.4-277 hyp wh. gtz-calc veining, irregular, folded, minor blac wh. ; 25% vein material. tr py	775	T-	273.4	277.0	3.6				
		@ 277.6-279.4 as above	776	T-	277.0	279.4	2.4				
		@ 306 - Broken core, strong fault zone.									
309.0	343	<u>Andesite</u> ; dk gn to black; carbonate rich; minor reddish Fe stain on fractures; gwh; ggy wh g-c veins to irregular, chlorite w veining; probably at edge of peridotite, appear to be inclusion of peridotite.									

LANGRIDGES - TORONTO - 368-1168

DIAMOND DRILL RECORD

NAME OF PROPERTY Buckingham
 HOLE NO. D89-14 SHEET NO. 5

FOOTAGE		DESCRIPTION	SAMPLE			ASSAYS					
FROM	TO		NO.	% SULPHIDES	FOOTAGE			%	%	OZ./TON	OZ. TON
					FROM	TO	TOTAL				
343.6	384.0	Talc-Peridotite as above, bx in part; wh. gtz-calc veins lux, w gn stylite partings of serp;									
384.0	400.0	Sheared Amphibolite; gtz-carb vein rich; nw carbonates; multiple wh gtz-carb veins @ 60° w gn chlorite; salmon pink calcite incl; traces pyrite; gn colour grading to pale yellowish gn at end of hole.									
		@ 384.0-388.6, 50% wh to gn wh gtz-carb veins w gn stylitic partings; 45°	777	Tr	384.0	388.6	4.6				
		@ 388.6-392.6 Sheared @ 45°, specks of black spec. hematite in some veins; pyrite clon fractures; major veins 5" gn to gg to wh, w pink incl;	778	Tr	388.6	392.6	4.0				
		@ 392.6-396.8 as above grading to yellow gn, sheared.	779	Tr	392.6	396.8	4.2				
		396.8-400.0 gn. yellow, sheared, irregular ggy wh gtz veins @ 20°, shearing @ 60°.	780	Tr	396.8	400.0	3.2				
		Note: section affected by talc-peridotite proximity.									
		END Hole @ 400'									

OM 97-334

DIAMOND DRILL RECORD

NAME OF PROPERTY BUCKINGHAM MINE
 HOLE NO. B89-14 LENGTH 400'
 LOCATION Eastward extn
 LATITUDE 24E DEPARTURE 12+00S
 ELEVATION -23.76' AZIMUTH 360 DIP -45°
 STARTED Feb 16/89 FINISHED Feb 17/89

FOOTAGE	DIP	AZIMUTH	FOOTAGE	DIP	AZIMUTH
150	44				
387	42				

HOLE NO. B89-14 SHEET NO. 1
 REMARKS _____
 LOGGED BY J.L. TINDALE

FOOTAGE		DESCRIPTION	SAMPLE				ASSAYS				
FROM	TO		NO.	% SULPHIDES	FOOTAGE		%	%	OZ/TON	OZ/TON	
					FROM	TO	TOTAL				
0	10.0	Casing									
10.0	64.0	MATAENEWAN DIABASE - Chilled contact.									
64.0	127.0	Andesite; dk gn to med. gn; sheared partially @ 60°; minor wispy wh. gtz-calc veinlets; some sharp gtz-calc @ 60° (1/4"); chlorite alteration in veins and shearing partially converted to serpentine; traces disseminated pyrite throughout; occasional speck of cpy in veins;									
127.0	176.0	Tuffaceous; carbonate-rich; sheared intensely over intervals w buff carb alln; occasional gywh gtz veins, locally mineralized w pyrite; minor bluegy gtz veins; pyrite disseminated in wall rock; tr. cpy;									
		@ 134.2-137.0 Moderately carbonatized; w 2, 1/2 gywh g-c veins w hvy pyrite @ 45°; section weakly sheared	754	1	134.2	137.0	2.8		411	.012	
		@ 137.0-140 Gygn, carbonate, w irregular gywh gtz-c. veins, traces tourmaline, cpy, py.	755	1	137.0	140.0	3.0		261	.008	
		@ 140.0-140.9 80% gywh gtz, cpy, py, chlorite inclusions; gy mineral traces.	756	2	140.0	140.9	0.9				Ag 410 .013
		@ 140.7-143.3 Gn. gy carb rock, w irregular gywh gtz-c vein @ ± 45°; pyrite hvy in vein, dis. th-ans. Lout Tr cpy	757	2	140.9	143.3	2.4		599 618	1017 .018	

LANGRIDGES - TORONTO - 366-1168

DIAMOND DRILL RECORD

NAME OF PROPERTY Buckingham
 HOLE NO. B89-14 SHEET NO. 2

FOOTAGE		DESCRIPTION	SAMPLE			ASSAYS					
FROM	TO		NO.	% SULPH. IDES	FOOTAGE		%	%	OZ. TON	OZ. TON	
					FROM	TO					TOTAL
		@143.3-147.0 fairly massive gngy carb-rich, w 2 gng wh gtz-c. veins w hyp pyrite; pyrite diss throughout, cpy cpy hyp in veins.	758	2	143.3	147.0	3.7		116		
		@147.0-151.7 as above, sl. decrease in pyrite, single 1/4" gng wh gtz @ 45°	759	1	147.0	151.7	4.7		230		
		* @151.7-154.3 more sheared, minor yellowish buff alt ⁿ around veins; partially bx, irregular gng wh gtz-calc veins w hyp pyrite; chlorite hyp.	760	2	151.7	154.3	2.6		81		
		@154.3-156.6 less sheared, gngy carb, diss. py; 20% gtz-c as sharp veins @ 45°; chlorite inclusions;	761	2	154.3	156.6	2.3		35		
		@156.6-161.2 moderate shearing; tr. tourmaline; t. py. gng.	762	1	156.6	161.2	4.6		17		
		@161.2-167.0 dk gn, sl. carbonated, pink calc veins minor wh gtz tourmaline 1/4" veins	763	T-	161.2	167.0	5.8		10		
		@167.0-170.3 dk. gn, reddish iron stain, minor 1/4" bl gng gtz @ 45° broken core	764	T-	167.0	170.3	3.3		45		
		@170.3-172.0 well sheared, yellowish buff alt ⁿ , shearing @ 60°; blues to pinkish, sacrositic gtz-calc; hyp pyrite w veins.	765	2	170.3	172.0	1.7		12		
		@172.0-176.0 moderate sheared, minor buff alt ⁿ , tr. py; white gtz carb veins @ 45°	766	1	172.0	176.0	4.0		5		
176.0	201.5	<u>Pillowed Andesite</u> ; hyp redd. stain along fractures Fe on Fe; med. gn; well fractured w spec. hematite, minor gsch fillings of gngtz-calc.									

LANGRIDGES - TORONTO - 366-1168

DIAMOND DRILL RECORD

NAME OF PROPERTY Buckingham
 HOLE NO. B89-14 SHEET NO. 3

FOOTAGE		DESCRIPTION	SAMPLE			ASSAYS				
FROM	TO		NO.	% SULPHIDES	FOOTAGE			%	OZ./TON	OZ. TON
					FROM	TO	TOTAL			
201.5	216.0	<p><u>Carbonate Shear-Zone</u>; w minor yellowish gn to buff alt. along shear plane @ 45-60°; gtz-carb veins; white to gy white; by veins in part, pyrite well developed in shear and in veins</p> <p>@ 205.0-208.0 Gngy carb rich, moderately sheared, w gy wh gtz-carb veins @ 60°; minor chlorite, tr py</p> <p>* @ 208.0-209.7 well sheared, 20% gtz, gy wh, chlorite incl, yellowish waxy alt.; pyrite 1%, veins @ 70° // to shearing.</p> <p>* @ 209.7-211.4 well sheared, 15% gn wh to gy wh gtz along shear plane; hvy yellow buff alt. w veins; 1% py. disseminated</p> <p>@ 211.4-215.8 poorly sheared, gn to gngy, minor gn wh gtz, pyrite tr</p>								
			767	tr	205.0	208.0	3.0		5'	
			768	1	208.0	209.7	1.7		446	
			769	1	209.7	211.8	2.1		1305	0.038
			770	Tr	211.4	215.8	4.4		12	
216.0	254.0	<p><u>Pillowed Andesite</u> as above w red Fe-stain flow specular hematite; dk. gn; grades downward to increasing carbonate.</p> <p>@ 228.2-229.6 weak shear zone, carbonate-rich; w pink wh. sucrosic gtz-carb vein, 2" @ 45° tr py.</p>								
			771	Tr	228.2	229.6	1.4		67	115
254.0	271.2	<p><u>Carb-rich Zone</u>; p. lgn to gngy, sheared in section best developed @ lower contact; gy wh. to pinkish white g-c. veins, 6" to 8" at intervals; minor wh. g-c. veins @ 45°; along shearing; pyrite disc., best in veins.</p>								

LANGRIGES - TORONTO - 366-1168

DIAMOND DRILL RECORD

NAME OF PROPERTY Buckingham Mines
 HOLE NO. B09-14 SHEET NO. 4

FOOTAGE		DESCRIPTION	SAMPLE			ASSAYS					
FROM	TO		NO.	% SULPH. IDES	FOOTAGE			%	OZ. TON	OZ. TON	
					FROM	TO	TOTAL				
		@ 254.0-257.0 moderately sheared, ggy gn; 8° pkgywh gfr-c. vein @ 45°; minor bl wh. gtr injected along shearing; tr. tourmaline w veins; tr pyrite w veins; chlorite-rich inclusions in veins;	772	T-	254.0	257.0	3.0		108		
		268.5-271.2 Shear-Zone, carb-rich; 20% gtr-carb veins as 8" banded ggy wh w pinkish tinge, gn chlorite streaks and inclusions; hyp pyrite along shearing @ 60° at end of large vein; trace buff carb at 1 1/2';	773	1	268.5	271.2	2.7		102		
271.2	309.0	Talc-Peridotite, dk gn w white speckled; sheared wavy banded; wh gtr-calc veins; traces pyrite;									
		@ 271.2-273.4 Sheared and bleached, trace py, minor g-c veins @ 45°	774	Tr	271.2	273.4	2.2		60		
		@ 273.4-277 hyp wh. gtr-calc veins; irregular, folded, minor blue wh. ; 25% vein material. tr py	775	T-	273.4	277.0	3.6		17		
		@ 277.0-279.4 as above	776	T-	277.0	279.4	2.4		114		
		@ 306 - Broken core, strong fault zone.									
309.0	343	Andesite; dk gn to black; carbonate rich; minor reddish Fe stain on fractures; gn wh; ggy wh g-c veins; irregular chlorite w veins; probably at edge of peridotite; appears to be inclusion of peridotite.									

ANGRIDGES - TORONTO - 368-1168

DIAMOND DRILL RECORD

NAME OF PROPERTY Buckingham
 HOLE NO. 089-14 SHEET NO. 5

FOOTAGE		DESCRIPTION	SAMPLE			ASSAYS					
FROM	TO		NO.	% SULPHIDES	FOOTAGE			%	%	OZ/TON	OZ. TON
					FROM	TO	TOTAL				
343.6	384.0	Talc-Peridotite as above, bx in part; wh. gtz-calc veins hor, w gn stylolite partings of serp;									
384.0	400.0	Sheared Andesite; gtz-carb vein rich; new carbonates; multiple wh gtz-carb veins @ 60° w gn chlorite; salmon pink calcite incl; traces pyrite; gn colour grading to pale yellowish gn at end of hole.									
		@384.0-388.6, 50% wh to gn wh gtz-carb veins w gn stylolite partings; 45°	777	Tr	384.0	388.6	4.6		13		
		@388.6-392.6 Sheared @ 45°, specks of black spec. hematite in some veins; pyrite elong structures; major veins 5" gn to gg to wh, w pink incl;	778	Tr	388.6	392.6	4.0		20		
		@392.6-396.8 as above grading to yellow, sheared.	779	Tr	392.6	396.8	4.2		188		
		396.8-400.0 gn yellow, sheared, irregular gn gtz veins @ 20°, shearing @ 60°.	780	Tr	396.8	400.0	3.2		84		
		Note: section affected by talc-peridotite proximity.									
		END Hole @ 400'									

DIAMOND DRILL RECORD

NAME OF PROPERTY BUCKINGHAM MINE
 HOLE NO. B89-15 LENGTH 400'
 LOCATION 100' W of B89-12
 LATITUDE L19E DEPARTURE 11 + SOS
 ELEVATION -22.25' AZIMUTH 360° DIP 45°
 STARTED Feb. 17 FINISHED Feb. 18 1989

FOOTAGE	DIP	AZIMUTH	FOOTAGE	DIP	AZIMUTH
150	43°				
400	39°				

HOLE NO. B89-15 SHEET NO. 1
 REMARKS _____
 LOGGED BY J. L. TINDALE

FOOTAGE		DESCRIPTION	SAMPLE				ASSAYS					
FROM	TO		NO.	% SULPHIDES	FOOTAGE			%	%	OZ/TON	OZ/TON	
					FROM	TO	TOTAL					
0	23.0	Casing.										
23.0	75.4	Diabase; <u>MATACHEWAN</u> ; olivene phenos; dk gn to bl; vifg. at lower contact but not chilled.										
75.4	93.0	Andesite (pillowed) medium gr; fine gr; non carbonates; wispy g-c veinlets, and irregular gte-carb veins; yellowish gn serp alt ⁿ . w veins; traces cubic pyrite w some veins; minor red Fe stain, spec. hematite xls; sl. increase in carbonate content downward.										
93.0	123.0	<u>Carbonate-Rich Tuff</u> , w some hv sheared sections; gy gn; shearing @ 70° where best developed w injected blue gy gte and buff carb alt ⁿ ; trace pyrite throughout. tourmaline w occasional veins. @ 101.0 - 105.3 gy, gn; w fair shearing; @ 60°; injected with blue gy gte stas along partings; trace tourmaline; trace pyrite, mostly in heavier shearing; trace cpj. @ 105.3 - 108.6, gn to dk gn, less sheared, minor wh. gn x-cutting 1/4" veins of gte-carb. * @ 108.6 - 110.8. Hv sheared section; yellow-buff alt ⁿ ; gy wh to bl. gy gte injection; carb rich; 1% kg, 1/4" cpj	781	Tr	101.0	105.3	4.3					
			782	Tr	105.3	108.6	3.3					
			783	1	108.6	110.8	2.2					

ONTARIO GEOLOGICAL SURVEY
 ASSESSMENT FILES
 OFFICE
 JUN 22 1989
 RECEIVED

LANGRIDGES - TORONTO - 366-1168

DIAMOND DRILL RECORD

NAME OF PROPERTY Buckingham Mine
 HOLE NO. 1389-15 SHEET NO. 2

FOOTAGE		DESCRIPTION	SAMPLE			ASSAYS					
FROM	TO		NO.	% SULPHIDES	FOOTAGE		%	%	OZ/TON	OZ/TON	
					FROM	TO	TOTAL				
		@ 110.8 - 115.0 Tuffaceous, med gn, carb rich; sheared but less than above; irregular wh g-c veins w masses of tourmaline (1/2") traces pyrite throughout	784	Tr	110.8	115.0	4.2				
		@ 115 - 117.0 as above w blue gy. gtz along shearing; 1% py	785	1	115.0	117.0	2.0				
123.0	180.2	Andesite/Tuff/ non carbonated; gn to dkign; wispy wh. gn g-c veins and gash fillings; some blue-wh. gtz blebs (chert-like) chlorite rich around veins; traces pyrite; tr cpb.									
		@ 131.0, 5" gtz calc. vein, hvy purplish gtz, yellow serp inclusions replacing chlorite; minor large cubes pyrite; trace cpb.									
180.2	202.5	<u>Carbonate Shear Zone</u> ; gy to gn gg; wavy shear-planes @ 45-60°; yellow-buff carb altn; partially bx and flow banded; blue gtz common as infilling fractures and veins; shear-planes; also gy wh gtz w tourmaline & pyrite v.f. g diss and coarse cubes throughout.									
		@ 180.2 - 184.8 gy, carb-rich rock; irregular blue-gy. gtz w calc; tr to 1% pyrite; not intensely sheared;	786	Tr	180.2	184.2	4.0				
		@ 184.8 - 187.0 as above w blue gtz irreg. str, tr py	787	Tr	184.2	187.0	2.8				
		@ 187.0 - 190.4 as above, streaks of blue gtz c45°	788	1	187.0	190.4	3.4				
		@ 190.4 - 193.5 as above w 1" gy bl. gtz, tourmaline tr. py.	789	Tr	190.4	193.5	3.1				

DIAMOND DRILL RECORD

NAME OF PROPERTY Buckingham Mine
 HOLE NO. B89-15 SHEET NO. 3

FOOTAGE		DESCRIPTION	SAMPLE			ASSAYS				
FROM	TO		NO.	% SULPHIDES	FOOTAGE		%	OZ/TON	OZ/TON	
				FROM	TO	TOTAL				
		* @193.5-196.1 Intense shear; buff carb alt ² ; hvy blue-gy gtz veins; @ 60° ± 2"; tourmaline; pyrite 1%	790	1	193.5	196.1	2.6		0.136	10.075
		* @196.1-199.5 Intense shearing; buff alt ² ; bx, wavy banding to shear planes; less gtz than above	791	1	196.1	199.5	3.4			
		@199.5-202.5 Less shearing; still blue gtz injected along shears	792	1	199.5	202.5	3.0			
202.5	275.0	<u>Tuffaceous Andesite</u> ; med. gn, conc. whisy w calc infillings; 1/4" irregular gywk selenite g.c. veinlets; moderately carbonate-rich; wavy wh. gtz-calc infills and veinlets; shear- veins @ 30°; near end of section sharp veins @ 60° w serp (yellow) inclusions; Fe xls.								
		@224.5-226.3 Gysn carb-rich; bluegy gtz vein, 12" w hvy inclusions @ chlorite and carbonate; pyrite 3%; @ 30° Tr opy	793	3	224.5	226.3	1.8			
		@226.3-229.3 Gysn carb w 1/8" g.c. str @ 30°, tr py;	794	Tr	226.3	229.3	3.0			
275.0	291.2	<u>Carbonate Shear Zone</u> ; weak shear; in massive tuffaceous rock; gradation at both upper & lower contacts; increase in carbonate noted; fine grained traces of pyrite best in heavier sheared sections; chlorite common.								
		* @ 275.0-277.0 hvy wavy shear; buff carb alt ² ; fig. pyrite, blue gy. gtz injected along shearing; wavy wh. g-c veinlets throughout.	795	1	275.0	277.0	2.0			
		@ 277.0-280.0 weakly sheared @ 60°; 2" gtz-vein, gywk, tr py	796	Tr	277.0	280.0	3.0			

LANGRIDGES - TORONTO - 386-1168

DIAMOND DRILL RECORD

NAME OF PROPERTY Buckingham Mine
 HOLE NO. B89-15 SHEET NO. 4

FOOTAGE		DESCRIPTION	SAMPLE					ASSAYS			
FROM	TO		NO.	% SULPHIDES	FOOTAGE			%	%	OZ/TON	OZ/TON
					FROM	TO	TOTAL				
		@ 280.0-282.5 as above	797	Tr	280.0	282.5	2.5				
		@ 282.5-285.0 sheared @ 60° w multiple wh g.c. veinlets along planes; minor blue sq. frags in veins, tr py.	798	Tr	282.5	285.0	2.5				
		@ 285.0-289.0 moderate shearing as above	799	Tr	285.0	289.0	4.0				
		@ 289.0-291.2 heavier shear, 20% blue; gy wh g-c veins as inf. lls along steep planes @ 60°, tr py	800	Tr	289.0	291.2	2.2				
291.2	317.0	Tuffaceous; med. gn; sl. carbonaceous; abundant wavy white g-c veinlets; sharp 1" gn wh. gte-calc veins @ 60°; tr py w veinings; massive.									
317.0	379.8	Carbonate Shear Zone; ggn to yellowish ggn to grey; fine grd; well altered and sheared; buff carb alt ⁿ at intense shearing; blue gy; blue wh. gte injected along shear and as irregular masses; tourmaline hvy in occasional veins; pyrite hvy in veinings									
		@ 317.0-319.2 pale ggn, sheared @ 60°; irregular wh gy gte w tourmaline; tr py	801	Tr	317.0	319.2	2.2				
		@ 319.2-322.0 as above w yellowish buff carb alt ⁿ ; 6" band of blue gte hvy w chlorite, minor py.	802	Tr	319.2	322.0	2.8				
		@ 322.0-326.0 as above; minor blue gte veins injected	803	Tr	322.0	326.0	4.0				
		@ 326.0-331.4 as above; splotches blue gy gte,	804	Tr	326.0	331.4	5.4				
		@ 331.4-336.0 as above, sheared @ 60 as above.	805	Tr	331.4	336.0	4.6				
		* @ 336.0-337.8, hvy blue gy gte 20%; irregular w hvy chlorite inclusions, tourmaline, pyrite diss @ 290; cpy	806	Z	336.0	337.8	1.8				

LANGRIDGES - TORONTO - 368-1168

DIAMOND DRILL RECORD

NAME OF PROPERTY Buckingham Mine
 HOLE NO. B89-15 SHEET NO. 5

FOOTAGE		DESCRIPTION	SAMPLE			ASSAYS				
FROM	TO		NO.	% SULPH. IDES	FOOTAGE FROM TO TOTAL	%	%	OZ./TON	OZ. TON	
	337.8 - 340.8	Sheared, buff carb altered; occasional bluesy gte-tourmaline veins @ 70°; chert huy. + py	807	T-	337.8 340.8 3.0					
	340.8 - 345.0	as above, few veins	808	T-	340.8 345.0 4.2					
	345.0 - 348.0	as above, well developed 1/2"-1" bluesy gte-tour veins @ 90°; 45° w py, + cpy	809	I	345.0 348.0 3.0					
	348.0 - 352.8	as above, gash filled blue wh gte-tour.	810	T-	348.0 352.8 4.8					
	352.8 - 356.3	as above w several sharp blue gte-tourm. veins, chert along edges; + py, cpy	811	T-	352.8 356.3 3.5					
	356.3 - 359.2	as above w infills of blue wh gte, chert, + py	812	T-	356.3 359.2 2.9					
	359.2 - 364.7	as above	813	T-	359.2 364.7 5.5					
	364.7 - 367.7	as above, increase bl. gte, tourmaline, veining irregular; ch. huy, sharp veins @ 60°	814	T-	364.7 367.7 3.0					
	367.7 - 372.0	sheared, bl. carb, soft; shearing also @ 60° w hairline blue gte infills.	815	T-	367.7 372.0 4.3					
	372.0 - 374.8	1/2" gywh blue gte-carb vein w huy tour runs along interval, + py, cpy	816	T-	372.0 374.8 2.8					
	374.8 - 379.8	shearing @ 60° w huy wh. carb streaked along shear planes; single sharp gte-gywh vein @ 90°.	817	T-	374.8 379.8 5.0					
379.8	400.0	Tuffaceous; sliprophyritic; Fe stained on fractures, not carbonaceous; occasional gywh gte veins @ 30°; + py. END Hole 400.								

LANGRIDGES - TORONTO - 366-1168

DIAMOND DRILL RECORD

0M87-334

NAME OF PROPERTY Buckingham Mine
 HOLE NO. B89-15 LENGTH 400'
 LOCATION 100' W of B89-12
 LATITUDE L19E DEPARTURE 11 + 50S
 ELEVATION -22.75' AZIMUTH 360° DIP 45°
 STARTED Feb. 17 FINISHED Feb. 18 1989

FOOTAGE	DIP	AZIMUTH	FOOTAGE	DIP	AZIMUTH
150	43°				
400	39°				

HOLE NO. B89-15 SHEET NO. 1
 REMARKS _____
 LOGGED BY J. L. TINDALE

FOOTAGE		DESCRIPTION	SAMPLE			ASSAYS						
FROM	TO		NO.	% SULPHIDES	FOOTAGE			%	%	OZ/TON	OZ/TON	
					FROM	TO	TOTAL					
0	23.0	Casing										
23.0	75.4	Diabase, MATACNEWAN; olivene phenos; dk gn to bl.; v. fig. at lower contact but not chilled.										
75.4	93.0	Andesite (pillowed) medium gr; fine gr; non carbonated; wispy g-c veinlets, and irregular gtz-carb veins; yellowish gn serpalt? w veins; traces cubic pyrite w some veins; minor red Fe stain, spec. hematite xls; sl. increase in carbonate content downward.										
93.0	123.0	Carbonate-Rich Tuff, w some hvy sheared sections; gy gn; shearing @ 90° where best developed w injected blue gy gtc and buff carb alt?; trace pyrite throughout; tourmaline w occasional veins.										
		@ 101.0 - 105.3 gy, gn; w fair shearing, @ 60°; injected with blue gy gtz stas along partings; trace tourmaline; trace pyrite, mostly in heavier shearing; trace cpj.	781	Tr	101.0	105.3	4.3		14			
		@ 105.3 - 108.6, gn to dk gn, less sheared, minor wh. gn x-cutting 1/4" veins of gtz-carb.	782	T-	105.3	108.6	3.3		23			
		* @ 108.6 - 110.8 Hvy sheared section; yellow-buff alt?; gy wh to bl. gy gtz injection; carb rich; 1% py, x-cutting	783	1	108.6	110.8	2.2		154			

DIAMOND DRILL RECORD

NAME OF PROPERTY Buckingham Mine
 HOLE NO. 1389-15 SHEET NO. 2

FOOTAGE		DESCRIPTION	SAMPLE			ASSAYS	
FROM	TO		NO.	% SULPHIDES	FOOTAGE FROM TO TOTAL	GR	AG
		© 110.8 - 115.0 Tuffaceous, med gn, carb rich; sheared but less than above, irregular wh g-c veins w masses of tourmaline (1/2") traces pyrite throughout	784	T	110.8 115.0 4.2		34
		© 115 - 117.0 as above w blue gy. gtz along shearing; 1% py	785	L	115.0 117.0 2.0		24
123.0	180.2	Andesite/Tuff/ non carbonate; gn to dk gn; wispy wh. gn g-c veins and gush fillings; some blue-wh. gtz blebs (cheat-like) chlorite rich around veins; traces pyrite; tr epb.					
		© 131.0, 5" gtz calc vein, hvy purplish gtz, yellow serp inclusions replacing chlorite; minor large cubes pyrite; trace epb.					
180.2	202.5	<u>Carbonate Shear Zone</u> ; gy to gn gg; wavy shear-planes @ 45-60°; yellow-buff carb alt; partially bx and flow banded; blue gtz common as infilling fracture and veining shear-planes; also gywh gtz w tourmaline & pyrite v.f. g diss and coarse cubes throughout.					
		© 180.2 - 184.8 gy, carb-rich rock; irregular blue gy. gtz w calc; tr to 1% pyrite; not intensely sheared;	786	T	180.2 184.2 4.0		1441 1042
		© 184.8 - 187.0 as above w blue gtz irreg. star, tr py	787	T	184.2 187.0 2.8		14
		© 187.0 - 190.4 as above, streaks of blue gtz @ 45°	788	L	187.0 190.4 3.4		21
		© 190.4 - 193.5 as above w 1" gy bl. gtz, tourmaline T-py.	789	T	190.4 193.5 3.1		257

DIAMOND DRILL RECORD

NAME OF PROPERTY Buckingham Mine
 HOLE NO. B89-15 SHEET NO. 3

FOOTAGE		DESCRIPTION	SAMPLE			ASSAYS		
FROM	TO		NO.	% SULPHIDES	FOOTAGE FROM TO TOTAL	%	oz. ton	oz. ton
		* @193.5-196.1 Intense shear; buff carb alt ² ; hvy blue-gy gtz veins; @ 60° 2"; tourmaline; pyrite 1%	790	1	193.5 196.1 2.6	2588 4664	.075 0.136	KLON 10.075
		* @196.1-199.5 Intense shearing; buff alt ² ; br, wavy banding to shear planes; less gtz than above	791	1	196.1 199.5 3.4	638	.019	
		@199.5-202.5 Less shearing; still blue gtz injected along shears;	792	1	199.5 202.5 3.0	71	.002	
202.5	275.0	<u>Tuffaceous Andesite</u> ; med. gn, conc. whisy w calc infillings; 1/4" irregular gywh svecasid g-c veinlets; moderately carbonate-rich; wavy wh. gtz-calc infills and veinlets; sharper veins @ 30°; near end of section sharp veins @ 60° w serp (yellow) inclusions; Fe xls.						
		@224.5-226.3 Gy. gn carb-rich; bluegy gtz vein, 12" w hvy inclusions @ chlorite and carbonate; pyrite 3%; @ 30° Tr opy	793	3	224.5 226.3 1.8	260		
		@226.3-229.3 Gy. gn carb w 1/8" g-c str @ 30°, tr py;	794	T-	226.3 229.3 3.0	44		
275.0	291.2	<u>Carbonate Shear Zone</u> ; weak shear; in massive tuffaceous rock; gradational at both upper & lower contacts; increase in carbonate noted; fine grained traces of pyrite best in heavily sheared sections; chlorite common.						
		* @ 275.0-277.0 hvy wavy shear; buff carb alt ² ; fig. pyrite, blue gy. gtz injected along shearing; wavy wh. g-c veinlets throughout.	795	1	275.0 277.0 2.0	30		
		@ 277.0-280.0 weakly sheared @ 60°; 2" gtz-calc, gywh, tr py	796	T-	277.0 280.0 3.0	16		

DIAMOND DRILL RECORD

NAME OF PROPERTY Buckingham Mines
 HOLE NO. B89-15 SHEET NO. 4

FOOTAGE		DESCRIPTION	SAMPLE			ASSAYS	
FROM	TO		NO.	% SULPHIDES	FOOTAGE FROM TO TOTAL	GR/TON	GT/TON
		@ 280.0-282.5 as above	797	Tr	280.0 282.5 2.5	38	
		@ 282.5-285.0 sheared @ 60° w multiple wh g.c. veinlets along planes; minor blue sq. frags in veins, tr py.	798	Tr	282.5 285.0 2.5	19	
		@ 285.0-289.0 moderate shearing as above	799	Tr	285.0 289.0 4.0	19	130
		@ 289.0-291.2 heavier shear, 20% blue igg wh g-c veins as inf. lls along shear planes @ 60°, tr py	800	Tr	289.0 291.2 2.2	93	
291.2	317.0	Tuffaceous; med. gn; sl. carbonaceous; abundant + many white g-c veinlets; sharp 1" gn wh gte-calc veins @ 60°; tr py w veining; massive.					
317.0	379.8	Carbonate Shear Zone; ggn to yellowish ggn to grey; fine gr; well altered and sheared; buff carb alt ⁿ at intense shearing; blue ggn; blue wh. gte injected along shear and as irregular masses; tourmaline hvy in occasional veins; pyrite hvy in veins.					
		@ 317.0-319.2 pale ggn, sheared @ 60°; irregular wh ggn w tourmaline; tr py	801	Tr	317.0 319.2 2.2	18	
		@ 319.2-322.0 as above w yellowish buff carb alt ⁿ ; 6" band of blue gte hvy w chlorite, minor py.	802	Tr	319.2 322.0 2.8	20	
		@ 322.0-326.0 as above, minor blue gte veins injected	803	Tr	322.0 326.0 4.0	27	
		@ 326.0-331.4 as above w splashes blue ggn, gte,	804	Tr	326.0 331.4 5.4	38	
		@ 331.4-336.0 as above, sheared @ 60 as above.	805	Tr	331.4 336.0 4.6	249	
		* @ 336.0-337.8, hvy blue ggn gte 20%; irregular w hvy chlorite inclusions, tourmaline, pyrite dss @ 270; cpy	806	L	336.0 337.8 1.8	57	

DIAMOND DRILL RECORD

NAME OF PROPERTY Buckingham Mines
 HOLE NO. B29-15 SHEET NO. 5

FOOTAGE		DESCRIPTION	SAMPLE			ASSAYS					
FROM	TO		NO.	% SULPHIDES	FOOTAGE				GR. TON	GR. TON	
				FROM	TO	TOTAL					
	337.8 - 340.8	Sheared, buff earth altered; occasional bluish gtz-tourmaline veins @ 70°; chloite hug. + py	807	T-	337.8	340.8	3.0			543	
	340.8 - 345.0	as above, few veins	808	T-	340.8	345.0	4.2			48	
	345.0 - 348.0	as above, well developed 1/2"-1" bluish gtz-tour veins @ 90°-45° w py, + cpy	809	I	345.0	348.0	3.0			276	
	348.0 - 352.8	as above, gash filled blue wh gtz-tour.	810	T-	348.0	352.8	4.8			17	
	352.8 - 356.3	as above w several sharp blue gtz-tourm. veins, chloite along edges; + py, cpy	811	T-	352.8	356.3	3.5			119	
	356.3 - 359.2	as above w infills of blue wh gtz, chl, + py	812	T-	356.3	359.2	2.9			155	
	359.2 - 364.7	as above	813	T-	359.2	364.7	5.5			29	
	364.7 - 367.7	as above, increase bl. gtz, tourmaline, vein irregular, ch hug, sharp vein @ 60°	814	T-	364.7	367.7	3.0			22	
	367.7 - 372.0	sheared, ill-corr, soft; shearing also @ 60° w hairline blue gtz infills.	815	T-	367.7	372.0	4.3			14	
	372.0 - 374.8	1/2" grey bluish gtz-carb vein w hug tour runs along interval, + py, cpy	816	T-	372.0	374.8	2.8				
	374.8 - 379.8	shearing @ 40° w hug wh. carb streaked along shear planes; single sharp gtz-c grey vein @ 90°.	817	T-	374.8	379.8	5.0			17	
379.8	400.0	Tuffaceous; sliporphyrific; Fe stained on fractures, not carbonaceous; occasional grey gtz veins @ 30°; + py. END Hole 400.									

LANGRIDGES - TORONTO - 366-1168

DIAMOND DRILL RECORD

NAME OF PROPERTY BUCKINGHAM MINE
 HOLE NO. B89-16 LENGTH 400'
 LOCATION _____
 LATITUDE L 21 E DEPARTURE S+35S
 ELEVATION -18.25' AZIMUTH 360° DIP 45°
 STARTED Feb. 18, 1989 FINISHED Feb 19, 1989

FOOTAGE	DIP	AZIMUTH	FOOTAGE	DIP	AZIMUTH
150	42				
397	40°				

HOLE NO. B89-16 SHEET NO. 1

REMARKS _____

LOGGED BY J. L. TINDALE

FOOTAGE		DESCRIPTION	SAMPLE				ASSAYS					
FROM	TO		NO.	% SULPHIDES	FOOTAGE			%	%	OZ/TON	OZ/TON	
					FROM	TO	TOTAL					
0	16.0	Casing										
16.0	41.0	Moderate Carbonate Zone; ggy gn; f.g.; some 4-5" gy wh blue C.S. gtz veins; pyrite in veins and little cubes in wall rock. Grades downward to more massive similar rock. @20.5-23.6 Fgdense, carb-rich, minor wh. gte carb @23.6-24.8 Bluegy wh. f.g. gtz vein @ 30°, py, 3" @24.8-27.8 Dense gy. gn, streaks blue gtz @ 30°, 1/2" tr py @36.0-38.4 Moderate shear w/gy blue wh gte-acta vein mixed w/ky chlomite, pyrite @ 45° @38.4-41.0 Dense as above w/ w gngy gtz rich zone w chlomite and pyrite @ 30°, 2"	818	T-	20.5	23.6	3.1					
			819	I	23.6	24.8	1.2			0.081		
			820	I-	24.8	27.8	3.0					
			821	I	36.0	38.4	2.4					
			822	I	38.4	41.0	2.6					
41.0	77.0	Andesite; med. gn; f.g.; dense; still carb-rich; serp altered yellow gn in some veins; some hauline wh g-cementite + tr. py.										
77.0	117.0	Carbonate Rich Zone; Shear-Zones; pale gngy to ggy gn, to yellowish gngy; f.g.; variable shearing @ 60°; buff carb. alte; bluegy gtz veins intersect along shearing; wh. igg wh gtz w/ tourmaline; pyrite dist throughout.										

ONTARIO GEOLOGICAL SURVEY
 ASSESSMENT FILES
 OFFICE
 JUN 22 1989
 RECEIVED

LANGRIDGES - TORONTO - 368-1188

DIAMOND DRILL RECORD

NAME OF PROPERTY Buckingham Mine
 HOLE NO. B 87-16 SHEET NO. 2

FOOTAGE		DESCRIPTION	SAMPLE			ASSAYS					
FROM	TO		NO.	S. SULPH. ICES	FOOTAGE			%	%	OZ. TON	OZ. TON
					FROM	TO	TOTAL				
		@77.0-80.1 Ggn carb rich, irregular ggn w/ gtz-tourmaline, tr. py.	823	T-	77.0	80.1	3.1				
		@80.1-82.3 as above w/ c.g. ggn w/ gtz, pyrite	824	T-	80.1	82.3	1.2				
		@82.3-83.8 hvy shear, yellow buff alt; 2" gtz, ggn w/ 45°	825	1	82.3	83.8	1.5				
		@83.8-87.2 well sheared @ 80°, lined w/ bluish gtz, disc py	826	2	83.8	87.2	3.4				
		@87.2-92.0 well " @ 60°, moderate buff yellow alt, minor bluish gtz, tr. py	827	T-	87.2	92.0	4.8				
		@92.0-95.7 hvy alt, yellow buff, well sheared; irregular bluish gtz veins; w/ ggn w/ gtz-carb veins w/ py, tourmaline, 3% py. disc.	828	3	92.0	95.7	3.7			0076	
		95.7-99.1 sh. ggn; sheared less intense; st. karbonate; bluish gtz @ 45° w/ pyrite.	829	T-	95.7	99.1	3.4				
		----- @106.3-108.1 gn to yellowish gn, sheared; ggn blue gtz @ 60°, pyrite cubes throughout	830	1	106.3	108.1	1.8				
117.0	192.8	DK Gn Andesite; moderately sheared and carbonatized; some ggn w/ gtz veins w/ tourmaline; zones of heavy shearing lined w/ hornbl. w/ carb veins; shearing is @ 80°, grades downward to non-carbonate, follow lava w/ red Fe & c. c. Ks. @ 127.0, 8" pink overcast gtz-carb vein w/ buff yellow ggn serp. alt. inclusions. tr. py. @ 159.5 4" w/ gtz @ 70°, w/ hvy chlorite; yellow soap flowers; cubic pyrite.									

AMORRIGGS - TORONTO - 366-1168

DIAMOND DRILL RECORD

NAME OF PROPERTY Buckingham Mine
 HOLE NO. B29-16 SHEET NO. 3

FOOTAGE		DESCRIPTION	SAMPLE			ASSAYS					
FROM	TO		NO.	% SULPH. IDES	FOOTAGE			%	%	OZ. TON	OZ. TON
					FROM	TO	TOTAL				
192.8	232.1	<p><u>Carbonate Sheared Zone; ggn. to gngy. f.g. huy</u> Shearing in part; injected w blue gtz which is fractured and lined w wh. carbonate; pyrite throughout in trace amounts; tourmaline with some urines; chlorite common.</p>									
		<p>© 192.8 - 197.0 well sheared; yellowish-buff alt²; blue gtz along shear planes @ 80°; pyrite f.g. disseminated;</p>	831	1	192.8	197.0	4.2				
		<p>© 197.0 - 199.8 well altered, carb rich; ggy; wh gtz tourmaline; blue gtz inject; pyrite diss.; cpy trace</p>	832	1	197.0	199.8	2.8				
		<p>* © 199.8 - 202.5 blue gtz as veins irregular fractured w white carb; pyrite 1-2%</p>	833	2	199.8	202.5	2.7				
		<p>* © 202.5 - 204.7 blue gtz, very irregular, bx(?), throughout interval; pyrite traces to 2%</p>	834	1	202.5	204.7	2.2				
		<p>© 204.7 - 207.0 sheared gngy rock, minor blue wh gtz, 1" wh gtz-carb vein @ 60°. " " " " " "</p>	835	Tr	204.7	207.0	2.3				
		<p>© 222.5 - 225.9 ggn, sheared, yellow buff alt²; minor blue gtz inject @ 80° Tr. P.</p>	836	Tr	222.5	225.9	3.4				
		<p>* © 225.9 - 228.7 sheared w ggy wh. gtz, tourmaline, 2" vein and ggy sucrosic, shearing infilled gtz-carb, to py, buff carb altⁿ</p>	837	Tr	225.9	228.7	2.8				
		<p>© 228.7 - 232.1 well sheared, infilling of 1/2" ggy sucrosic gtz, wh. gtz veins irregular; shearing @ 45°; trace cpy, py.</p>	838	Tr	228.7	232.1	3.4				

DIAMOND DRILL RECORD

NAME OF PROPERTY Buckingham Mine
 HOLE NO. B89-16 SHEET NO. 4

FOOTAGE		DESCRIPTION	SAMPLE			ASSAYS						
FROM	TO		NO.	% SULPHIDES	FOOTAGE			%	%	OZ./TON	OZ./TON	
					FROM	TO	TOTAL					
232.1	400	<p><u>Talc Peridotite</u>, sheared @ 45°; minor whgtz veins @ 45°; traces disseminated pyrite; shearing/foliation @ 45°, well developed over intervals; more trace pyrite; brecciated in part; flow banded in part, dkgn w white speckles; yellowish serpentine alt developed in lower portion w increased shearing;</p> <p>Note: bottom of hole exhibits highly contorted shearing w influx of whtztz; black waxy parting and black fill material over 1/4"; noted pyrite increase but still trace; sl. silicification @ 400' - near lower contact?</p> <p>@ 396.0-400' as above noted.</p> <p><u>End Hole @ 400'</u></p>										
			B56	Tr	396.0	400.0	4.0					

DIAMOND DRILL RECORD

0M07-334

NAME OF PROPERTY Buckingham Mine
 HOLE NO. B89-16 LENGTH 400'
 LOCATION _____
 LATITUDE L 21 E DEPARTURE 9+355
 ELEVATION -18.25' AZIMUTH 360° DIP 45°
 STARTED Feb. 18, 1989 FINISHED Feb 19, 1989

FOOTAGE	DIP	AZIMUTH	FOOTAGE	DIP	AZIMUTH
150	42				
397	40°				

HOLE NO. B89-16 SHEET NO. 1

REMARKS _____

LOGGED BY J. L. TINDALE

FOOTAGE		DESCRIPTION	SAMPLE			ASSAYS				
FROM	TO		NO.	% SULPHIDES	FOOTAGE FROM TO TOTAL	%	%	OZ/TON	OZ/TON	
0	16.0	Casing								
16.0	41.0	Moderate Carbonate Zone; gygn. f.g.; some 4-5" gy wh blue C.S. gtz veins; pyrite in veins and disse cubes in wall rock. Grades downward to more massive similar rock. @20.5-23.6 Fydenre, carb-rich, minor wh. gtz carb @23.6-24.8 Bluegy wh. f.g. gtz vein @ 30°, py, 3" @24.8-27.8 Dense gy. gn, streaks blue gtz @ 30°, 1/2", tr py @36.0-38.4 Moderate shear w/gy blue wh gtz calc vein mixed w/ hvy chlorite, pyrite @ 45° @38.4-41.0 Dense as above w/ w gngy gtz rich zone w/ chlorite and pyrite @ 30°, 2"	818	T-	20.5	23.6	3.1		144	
			819	1	23.6	24.8	1.2	2773	0.081	
			820	T-	24.8	27.8	3.0		78	
			821	1	36.0	38.4	2.4		220	
			822	1	38.4	41.0	2.6		21	
41.0	77.0	Andesite; med. gn; f.g.; dense; still carb-rich; serp altered yellow gn in some veins; rare hauline wh. calc. etc. tr. py.								
77.0	117.0	Carbonate Rich Zone; Shear-Zones; pale gngy to gygn, to yellowish gngy; f.g.; variable shearing, @ 60°; buff carb. alte; bluegy gtz veins intersect along shearing; wh. 'gy wh gtz w/ tourmaline; pyrite disse throughout.								

DIAMOND DRILL RECORD

NAME OF PROPERTY Buckingham Mine
 HOLE NO. B 89-16 SHEET NO. 2

FOOTAGE		DESCRIPTION	SAMPLE			ASSAYS					
FROM	TO		NO.	% SULPHIDES	FOOTAGE		%	%	OZ. TON	OZ. TON	
				FROM	TO	TOTAL					
		877.0-80.1 Gyn carb rock, irregular ggnwh gtz - tourmaline, tr. py.	823	T-	77.0	80.1	3.1				
		@80.1-82.3 as above w c.g. ggnwh gtz, pyrite	824	T-	80.1	82.3	1.2			182	
		@82.3-83.8 hvy shear, yellow buff alt; 2" gtz, ggnwh @45°	825	1	82.3	83.8	1.5			470	
		@83.8-87.2 well sheared @ 80°, lined w bluish gtz, disc py	826	2	83.8	87.2	3.4			168	
		@87.2-92.0 well " @ 60°; moderate buff yellow alt, mino- bl gtz, tr py	827	T-	87.2	92.0	4.8			70	
		@92.0-95.7 hvy alt, yellow buff, well sheared; irregular blue gtz veins; w to ggnwh gtz-carb veins w py, tourmaline, 3% py-diss.	828	3	92.0	95.7	3.7			2601	0.076
		95.7-99.1 dk gr; sheared less intense; st. ker-borate; bluish gtz @ 45° w pyrite.	829	T-	95.7	99.1	3.4			131	

		@106.3-108.1 gn to yellowish gn, sheared; ggn blue gtz @ 60°, pyrite cubes throughout	830	1	106.3	108.1	1.8			792	
117.0	192.8	DK Gn Andesite; moderately sheared and carbonatized; some ggnwh gtz veins w tourmaline; zones of heavy shearing lined w hornbl. wh carb veins; shearing is @ 80°; grades downward to non-carbonate, pillow lava w red Fe & calc. Ken @ 127.0, 8" pink saccharine gtz-carb veins w bag of yellow gn serp alt. inclusions. tr py. @ 159.5 4" wh gtz @ 70°, w hvy chlorite; yellow serp flowers, cubic pyrite.									

DIAMOND DRILL RECORD

NAME OF PROPERTY Buckingham Mine
 HOLE NO. B29-16 SHEET NO. 3

FOOTAGE		DESCRIPTION	SAMPLE			ASSAYS			
FROM	TO		NO.	% SULPH. IDES	FOOTAGE FROM TO TOTAL	g	g	OZ. TON	OZ. TON
192.8	232.1	<u>Carsonate Sheared Zone</u> ; ggg, f.g., huy Shearing in part; injected w blue gtz which is fractured and lined w wh. carbonate; pyrite throughout in trace amounts; tourmaline with some vermic; chlorite common.							
		@ 192.8 - 197.0 well sheared; yellowish-buff alt ² ; blue gy gtz along shear planes @ 80°; pyrite f.g. disseminated;	831	1	192.8 197.0 4.2			15	
		@ 197.0 - 199.8 well altered, carb rich; gy; wh gtz tourmaline; blue gtz inject; pyrite diss.; cpy trace	832	1	197.0 199.8 2.8			21	
		* @ 199.8 - 202.5 blue gtz as veins irregular, fractured w wh. carb; pyrite 1-2%	833	2	199.8 202.5 2.7			27	
		* @ 202.5 - 204.7 blue gtz, very irregular, bx(?), throughout interval, pyrite traces to 2%	834	1	202.5 204.7 2.2			173	
		@ 204.7 - 207.0 sheared ggg rock, minor blue wh gtz, 1" wh gtz-carb vein @ 60° " " " " " "	835	T-	204.7 207.0 2.3			46 56	
		@ 222.5 - 225.9 ggg, sheared, yellow buff alt ² ; minor blue gtz inject @ 80° T- M.	836	T-	222.5 225.9 3.4			118	
		* @ 225.9 - 228.7 sheared w gy wh. gtz, tourmaline, 2" vein and gy spheroidal, shearing infilled gtz-carb, to py., buff carb alt ⁿ	837	T-	225.9 228.7 2.8			30	
		@ 228.7 - 232.1 well sheared, infilling of 1/2" gy spheroidal gtz-c wh. gtz veins irregular; shearing @ 45°; trace cpy, py.	838	T-	228.7 232.1 3.4			54	

DIAMOND DRILL RECORD

NAME OF PROPERTY Buckingham Mines
 HOLE NO. B89-16 SHEET NO. 4

FOOTAGE		DESCRIPTION	SAMPLE			ASSAYS			
FROM	TO		NO.	% SULPHIDES	FOOTAGE FROM TO TOTAL	UZ. TON	UZ. TON		
282.1	400	<p>Talc Peridotite, sheared @ 45°; minor whgtz-e veins @ 45°; traces disseminated pyrite; shearing/foliation @ 45°, well developed over intervals; more trace pyrite; brecciated in part, flow banded in part, dkgn w white speckles; yellowish serpentine also developed in lower portion w increased shearing;</p> <p>Note: bottom of hole exhibits highly contorted shearing w influx of whigtz; black waxy parting and black infill material over 4"; noted pyrite increase but still trace; sl. silicification @ 400' - near lower contact?</p> <p>@ 396.0-400' as above noted.</p> <p><u>End Hole @ 400'</u></p>	B50	T-	396.0	400.0	4.0	449	.013

DIAMOND DRILL RECORD

NAME OF PROPERTY BUCKINGHAM MINE
 HOLE NO. B89-17 LENGTH 319 Feet
 LOCATION _____
 LATITUDE L 22 E DEPARTURE 10 + 75 S
 ELEVATION -22.70' AZIMUTH 360° DIP 45°
 STARTED Feb 19 '89 FINISHED Feb. 20 '89

FOOTAGE	DIP	AZIMUTH	FOOTAGE	DIP	AZIMUTH
150'	43°				
317	40°				

HOLE NO. B89-17 SHEET NO. 1

REMARKS _____

LOGGED BY J.L. TINDALE

FOOTAGE		DESCRIPTION	SAMPLE				ASSAYS						
FROM	TO		NO.	% SULPHIDES	FOOTAGE			%	%	OZ/TON	OZ/TON		
					FROM	TO	TOTAL						
0	24.0	Casing											
24.0	155.8	<u>MARAGNEWAN Dabase</u> ; olivine phenos; sectors of serpentine rich, bright gn alt ⁿ ; rare gy wh. gte stars; serpi. lined shears rare; chilled contact.											
155.8	191.5	<u>Tuffaceous andesite</u> ; gy gn; massive, frg; mildly sheared at ±40°; carbonate content high; rare 1/8 gy. wh g-e veins of random orientation; sharp vein (1/2") e 45° w to diss. pyrite; chlorite inclusions in veins;											
191.5	212.6	<u>Andesite</u> ; med. gn to dk. gn; red Fe stain on fractures; appears to be pillow selvages w serpentine alt ⁿ ; rare yellow-wh. phenos; non-carbonate. Rare blue-gy hairline stns w pyrite, cpy traces.											
212.6	227.4	<u>Carbonate shear zone</u> , weak, gn to gy gn, sheared @ 70°, minor blue-gy g.e. veinlets along shearing; irregular carb veinlets filling gash fractures; + pyrite w veins; @ 217.0-219.2 sheared @ 80°; wispy wh g-e veinlets, trpy; 3" gy gte vein @ 70°, gn. ss; chlorite common @ 219.2-223.7 gn to gn. gy, poorly sheared, as above. @ 223.7-227.3 massive irregular gte, gy wh. over 18", 11c core Tr py. cpy.	B51	Tr	217.0	219.2	2.2						
			B52	Tr	219.2	223.7	4.5						
			B53	Tr	223.7	227.3	3.6						

ONTARIO GEOLOGICAL SURVEY
 ASSESSMENT FILES
 OFFICE

 JUN 22 1989

 RECEIVED

DIAMOND DRILL RECORD

NAME OF PROPERTY BUCKINGHAM MINE
 HOLE NO. B89-17 SHEET NO. 2

FOOTAGE		DESCRIPTION	SAMPLE			ASSAYS				
FROM	TO		NO.	% SULPHIDES	FOOTAGE		%	%	OZ./TON	OZ./TON
					FROM	TO				
227.4	249.0	Andesite; pillowed; non carbonate; yellow serpentine alteration along irregular selvages and replacing bx. frags; trace diss. pyrite w serp rich zones; minor irregular sg wh gtz-carb veins; traces spec. hematite along occasional vein edges.								
249.0	257.0	Weak Carbonate-rich, Shear Zone; best interval sheared @ 70°, wavy, infilled w gn wh gtz-carb hairline veinlets; some bluish g-c veins //l shearing; tr pyrite	B54	Tr	252.4	255.1	2.7			
257.0	269.6	Andesite, dk gn, non-carbonate; abundant irregular white g-c veins, chlorite rich, minor tr. py, cp; basal 3' sheared @ 45°.								
269.6	274.2	Talc-Peridotite; dk gn w white spots, sheared @ 45°; some white barren gtz veins.								
274.2	319.0	Dibase, chilled contact, MATARHEWAN.								
	319.0	End of Hole.								
		Note: Stopped Hole @ 2:30 PM Feb 20/59.								

DIAMOND DRILL RECORD

DM 87-334

NAME OF PROPERTY BUCKINGHAM MINE
 HOLE NO. B89-17 LENGTH 319 Feet
 LOCATION _____
 LATITUDE L22E DEPARTURE 10+755
 ELEVATION -22.70 AZIMUTH 360° DIP 45°
 STARTED Feb 19 '89 FINISHED Feb. 20 '89

FOOTAGE	DIP	AZIMUTH	FOOTAGE	DIP	AZIMUTH
150'	43°				
317'	40°				

HOLE NO. B89-17 SHEET NO. 1

REMARKS _____

LOGGED BY J.L. TINDALE

FOOTAGE		DESCRIPTION	SAMPLE			ASSAYS			
FROM	TO		NO.	% SULPHIDES	FOOTAGE FROM TO TOTAL	%	%	OZ/TON	OZ/TON
0	24.0	Casing							
24.0	155.8	<u>MATAGNEWAN Dabase</u> ; olivine phenos; sectous; Serpentine rich, bright gn alt ⁿ ; rare gy wh. gte stars; serp. lined shears rare; chilled contact.							
155.8	191.5	<u>Tuffaceous andesite</u> ; gy gn; massive, fig; mildly sheared at ±40°; carbonate content high; rare 1/8 gy. wh g-e veins at random orientation, sharp vein (1/2") e 45° w to diss pyrite; chlorite inclusions in veins;							
191.5	212.6	<u>Andesite</u> ; med. gn to dk. gn; red Fe stain w fracture; appears to be pillow selages w serpentine alt ⁿ ; rare yellow-wh. phenos; non-carbonate. Rare blue-gy hairline stars w pyrite; cpy traces.							
212.6	227.4	<u>Carbonate shear zone</u> , weak, gn to gy gn, sheared @ 70°, minor blue-gy g.e. veins along shearing, irregular carb veinlets filling gash fractures; to pyrite w veins; @ 217.0-219.2 sheared @ 80°; wispy wh g-e vein ltr, trpy, 3" gy gte vein @ 70°, gn-gy; chlorite common @ 219.2-223.7 gn to gn-gy, poorly sheared, as above. @ 223.7-227.3 massive irregular gte, gy alt over 18°, 1/2 carb Tr Py. CRY	B51	Tr	217.0	219.2	2.2	1047	.630
			B52	Tr	219.2	223.7	4.5	16	
			B53	Tr	223.7	227.3	3.6	33	

DIAMOND DRILL RECORD

NAME OF PROPERTY BUCKINGHAM MINE
 HOLE NO. B89-17 SHEET NO. 2

FOOTAGE		DESCRIPTION	SAMPLE			ASSAYS					
FROM	TO		NO.	% SULPHIDES	FOOTAGE			%	%	OZ/TON	OZ/TON
				FROM	TO	TOTAL					
227.4	249.0	Andesite, pillowed; non-carbonate; yellow serpentine alteration along irregular selvages and replacing bx. frags; trace disc. pyrite w serp rich zones; minor irregular g-c veins; traces spec. hematite along occasional vein edges.									
249.0	257.0	Weak Carbonate-rich, Shear Zone; best interval sheared @ 70°, wavy, infilled w gn wh gtz-carb hairline veinlets; some bluish g-c veins //el shearing; tr pyrite	854	Tr	252.4	255.1	2.7			93	.003
257.0	269.6	Andesite, dk gn, non-carbonate; abundant irregular white g-c veins, chlorite rich, minor tr. py, ep; basal 3' sheared @ 45°.									
269.6	274.2	Talc-Peridotite; dk gn w white spots, sheared @ 45°; some white barren gtz veins.									
274.2	319.0	Dmbase, chilled contact, MARYKNEWAN.									
	319.0	End of Hole.									
		Note: Stopped Hole @ 2:30 PM Feb 20/59.									

DIAMOND DRILL RECORD

NAME OF PROPERTY Asquith Township Property
 HOLE NO. B69-20 LENGTH 297 Feet
 LOCATION Asquith Township; Buckingham Mine Area
 LATITUDE L23E DEPARTURE 1100S
 ELEVATION -22.96' AZIMUTH 360° DIP -50°
 STARTED February 22 FINISHED February 23, 1989

FOOTAGE	DIP	AZIMUTH	FOOTAGE	DIP	AZIMUTH
150'	-50°	—			
297'	-43°	—			

HOLE NO. B69-20 SHEET NO. 1
 REMARKS Casing Pulled
 LOGGED BY K.W. Johnson

FOOTAGE		DESCRIPTION	SAMPLE			ASSAYS				
FROM	TO		NO.	% SULPHIDES	FOOTAGE		%	%	oz/ton	oz/ton
				FROM	TO	TOTAL				
0.0	15.0	<u>Casing in Overburden</u>								
15.0	17.0	<u>Boulder</u> - carbonized andesite, light green and schistose at 42° to CIA.								
17.0	34.5	<u>Broken Core</u> - foreign material; greenstone and granite; subangular clasts.								
34.5	36.5	<u>White Quartz-Carbonate Veins in Carbonized Andesite with Pyrite</u> - badly broken and ground section, qtz vein sections broken at lengths to 6 inches; 5% beige carbonate associated with chloritic vein selvages; up to 6% fine pyrite associated.	6900		34.5	36.5	20			
36.5	90.0	<u>Carbonized Andesite</u> - fine grained, light green to grey schistose at 55° to CIA with < 2% very fine								

ONTARIO GEOLOGICAL SURVEY
 ASSESSMENT FILES
 OFFICE
 JUN 22 1989
 RECEIVED

LANGRIDGES - TORONTO - 368-1168

DIAMOND DRILL RECORD

NAME OF PROPERTY _____

HOLE NO. 889-20 SHEET NO. 2

FOOTAGE		DESCRIPTION	SAMPLE			ASSAYS				
FROM	TO		NO.	% SULPHIDES	FOOTAGE		%	%	OZ/TON	OZ/TON
				FROM	TO	TOTAL				
		<p>fracture-filling carbonate stringers at 40° to 50° to CIA.</p> <p>36.5 to 40.5 : core badly broken.</p> <p>50.0 to 51.0 : slight shearing at 43° to CIA with trace to 3% beige-yellow carbonate associated with chloritic shears, trace pyrite.</p> <p>- from 66.5 feet, concentric shears with chloritic shunges bounding thin, irregular white carbonate and trace pyrite, trace yellow-beige carbonate.</p> <p>- at 86.5 feet andesite becomes progressively altered with beige carbonate as "floating"; yellow-beige in colour; massive to brittle fractured.</p>								
			6801	86.0	88.0	2.0				

DIAMOND DRILL RECORD

NAME OF PROPERTY Buckingham Mine
 HOLE NO. 389-20 SHEET NO. 3

FOOTAGE		DESCRIPTION	SAMPLE			ASSAYS					
FROM	TO		NO.	% SULPHIDES	FOOTAGE			%	%	OZ./TON	OZ. TON
					FROM	TO	TOTAL				
90.0	91.8	<p><u>Carbonate Shear</u></p> <p>-30% sinuous partings of white carbonate with 3% beige-carbonate alteration, in fine granular groundmass of quartz and chlorite; trace pyrite; 1% fine crystals formate late thin fractures of qtz-cb. cut at 80° and 30° to CIA.</p> <p>91.6 to 91.8: white qtz-cb. vein at 53° to CIA.; trace siderite at vein selvages.</p>	6902		88.0	90.0	2.0				
91.8	92.7	<p><u>Carbonatized Andesite</u></p> <p>- trace beige-carbonate alteration; grades into chloritized andesite at 92.7 feet.</p>	6903		90.0	92.0	2.0				
92.7	103.5	<p><u>Andesite</u></p> <p>- dark green, fine to medium-grained with coarse clots of epidote assocd. with quartz-carbonate veining.</p>	6904		92.0	93.0	1.0				

LANGRIDGES - TORONTO - 366-1168

DIAMOND DRILL RECORD

NAME OF PROPERTY Buckingham Mine
 HOLE NO. B89-20 SHEET NO. 4

FOOTAGE		DESCRIPTION	SAMPLE			ASSAYS					
FROM	TO		NO.	% SULPH IDES	FOOTAGE		%	%	OZ./TON	OZ./TON	
					FROM	TO					TOTAL
		98.8 to 99.5: qtz-ds with 25% epidote dts; 1% medium pyrite and trace chalcopyrite. at 20° to CA.	6905		97.0	99.0	2.0				
103.5	114.5	<u>Carbonatized Andesite</u> - as previous; gradational contact from overlying chloritic unit; traces of banding with grey-green andesite and beige-carbonated andesite at 57° to CA; fine-grained; predom. grey-green, cut by <1% white carb. fractures at 50° and 80° to CA.	6906		113.0	114.5	1.5				
114.5	118.3	<u>Quartz - Shear Zone</u> - grey, vitreous quartz cut by late, irregular fractures to carbonate; 3 to 4% chlorite incorporated in vein material; trace to 2% pyrite associated with selvages; trace beige-green carbonate as sinuous partings at vein selvages.	6907		114.5	118.3	3.8				
			6908		118.3	120.0	1.7				

DIAMOND DRILL RECORD

NAME OF PROPERTY Buxingham Mine
 HOLE NO. B89-20 SHEET NO. 5

FOOTAGE		DESCRIPTION	SAMPLE			ASSAYS					
FROM	TO		NO.	% SULPH IDES	FOOTAGE			%	%	OZ./TON	OZ. TON
					FROM	TO	TOTAL				
118.3	143.0	<p><u>Chloritic Pillowed Andesite</u></p> <p>-dark green andesite with indistinct epidotized pillow selvages; trace buff-carbonate from upper contact and assoc. with qtz-carbonate fracture-fillings; trace chalcopyrite with qtz-cb.</p>									
143.0	281.3	<p><u>Matchewan Diabase</u></p> <p>-grades from upper contact at 32° to CIA from fine grained, black; to medium-grained black; slightly magnetic throughout; very blocky core.</p> <p>143.0 to 190.0: very block and grand core.</p>									
281.3	288.7	<p><u>Chloritic Andesite</u></p> <p>-brecciated upper contact with Db. at 65° to CIA; somewhat sheared to epidote downwards; brittle qtz-cb. fracturing evident.</p>									

DIAMOND DRILL RECORD

NAME OF PROPERTY Buckingham Mine
 HOLE NO. 389.20 SHEET NO. 6

FOOTAGE		DESCRIPTION	SAMPLE			ASSAYS					
FROM	TO		NO.	% SULPHIDES	FOOTAGE		%	%	OZ./TON	OZ./TON	
					FROM	TO					TOTAL
		286.8 to 287.6: qtz-d. breccia zone with reddish-brown alteration of db. in coarse xenolithic cherts; no sulfide noted.	6909		286.0	288.0	2.0				
			6910		288.0	290.0	2.0				
288.7	289.8	<u>Granophytic Quartz-Carbonate Zone</u> - contacts with chloritic andesite schistose at 25° to CIA; medium to coarse intrusive to granitic-type texture to zone comprised of quartz and white carbonate; no mineralization noted.	6911		290.0	294.0	4.0				
289.8	297.0	<u>Chloritic Andesite</u> - as previous; with up to 5% fracture-filling white qtz-d. at irregular orientations to core; trace granophytic qtz-d. veins.									
	297.0	<u>End of Hole.</u>									

DIAMOND DRILL RECORD

DM 87-334

NAME OF PROPERTY Asquith Township Property
 HOLE NO. B89-20 LENGTH 297 Feet
 LOCATION Asquith Township; Buckingham Hill Area
 LATITUDE L23E DEPARTURE 1100S
 ELEVATION -22.96' AZIMUTH 360° DIP -50°
 STARTED February 22 FINISHED February 23, 1989

FOOTAGE	DIP	AZIMUTH	FOOTAGE	DIP	AZIMUTH
150'	-50°	—			
297'	-43°	—			

HOLE NO. B89-20 SHEET NO. 1

REMARKS Casing Pulled.

LOGGED BY K.W. Johnson

FOOTAGE		DESCRIPTION	SAMPLE				ASSAYS				
FROM	TO		NO.	% SULPHIDES	FOOTAGE			%	%	OZ/TON	OZ/TON
					FROM	TO	TOTAL				
0.0	15.0	<u>Casing in Overburden</u>									
15.0	17.0	<u>Boulder</u> - carbonitized andesite; light green and schistose at 42° to C/A.									
17.0	34.5	<u>Broken Core</u> - foreign material; greenstone and granite; subangular clasts.									
34.5	36.5	<u>White Quartz-Carbonate Veins in Carbonitized Andesite with Pyrite</u> - badly broken and ground sections; quartz vein sections broken at lengths to 6 inches; 5% beige carbonate associated with chloritic vein selvages; up to 6% fine pyrite associated.	6900		34.5	36.5	2.0		54		
36.5	90.0	<u>Carbonitized Andesite</u> - fine grained, light green to grey schistose at 55° to C/A with < 2% very thin									

DIAMOND DRILL RECORD

NAME OF PROPERTY _____

HOLE NO. B89-20

SHEET NO. 2

FOOTAGE		DESCRIPTION	SAMPLE			ASSAYS				
FROM	TO		NO.	% SULPHIDES	FOOTAGE		%	%	OZ./TON	OZ./TON
				FROM	TO	TOTAL				
		<p>fracture-filling carbonate stringers at 40° to 50° to CIA.</p> <p>36.5 to 40.5 : core badly broken.</p> <p>50.0 to 51.0 : slight shearing at 43° to CIA with trace to 3% beige-yellow carbonate associated with chloritic shears; trace pyrite.</p> <p>- from 66.5 feet, concentric shears with chloritic selvages bounding thin, irregular white carbonate and trace pyrite, trace yellow-beige carbonate.</p> <p>- at 86.5 feet andesite becomes progressively altered with beige carbonate as "floating"; yellow-beige in colour; massive to brittle fractured.</p>								
			6901	86.0	88.0	2.0		177		

DIAMOND DRILL RECORD

NAME OF PROPERTY Buckingham Mine
 HOLE NO. B69-20 SHEET NO. 3

FOOTAGE		DESCRIPTION	SAMPLE			ASSAYS			
FROM	TO		NO.	% SULPH. IDES	FOOTAGE FROM TO TOTAL	%	%	OZ./TON	OZ. TON
90.0	91.8	<p><u>Carbonate Shear</u></p> <p>-30% sinuous partings of white carbonate with 3% beige-carbonate alteration, in fine granular Q groundmass of quartz and chlorite; trace pyrite; 1% fine crystals forming late thin fractures of qtz-cb. cut at 80° and 30° to CIA.</p> <p>91.6 to 91.8: white qtz-cb. vein at 53° to CIA.; trace siderite at vein selvages.</p>	6902		88.0 90.0 2.0			104	
91.8	92.7	<p><u>Carbonitized Andesite</u></p> <p>- trace beige-carbonate alteration; grades into chloritized andesite at 92.7 feet.</p>	6903		90.0 92.0 2.0			415	
92.7	103.5	<p><u>Andesite</u></p> <p>- dark green, fine to medium-grained with coarse clots of epidote assoc. with quartz-carbonate veining.</p>	6904		92.0 93.0 1.0			106	

LANGRIDGES - TORONTO - 366-1168

DIAMOND DRILL RECORD

NAME OF PROPERTY Buckingham Mine
 HOLE NO. B89-20 SHEET NO. 4

FOOTAGE		DESCRIPTION	SAMPLE			ASSAYS					
FROM	TO		NO.	% SULPHIDES	FOOTAGE		%	%	OZ./TON	OZ./TON	
				FROM	TO	TOTAL					
		98.8 to 99.5: opt. cb. with 25% epidote dots; 1% medium pyrite and trace chalcopyrite. at 20° to CA.	6905		97.0	99.0	2.0		42		
103.5	114.5	<u>Carbonatized Andesite</u> -as previous; gradational contact from overlying chloritic unit; traces of banding with grey-green andesite and beige-carbonated andesite at 57° to CA; fine-grained; predom. grey-green; cut by <1% white carb. fractures at 50° and 80° to CA.	6906		113.0	114.5	1.5		557	.016	
114.5	118.3	<u>Quartz Shear Zone</u> -grey, vitreous quartz cut by late, irregular fractures to carbonate; 3 to 4% chlorite incorporated in vein material; trace to 2% pyrite associated with selvages.; trace beige-green carbonate as snags patings at vein selvages.	6907		114.5	118.3	3.8		3040	.088	
			6908		118.3	120.0	1.7.		381	.011	

DIAMOND DRILL RECORD

NAME OF PROPERTY Buckingham Mine
 HOLE NO. B89-20 SHEET NO. 5

FOOTAGE		DESCRIPTION	SAMPLE			ASSAYS			
FROM	TO		NO.	% SULPH IDES	FOOTAGE FROM TO TOTAL	%	%	OZ/TON	OZ/TON
118.3	143.0	<p><u>Chloritic Pillowed Andesite</u></p> <p>-dark green andesite with indistinct epilitized pillow selvages; trace bitl-carbonate from upper contact and assoc. with qtz-carbonate fracture-fillings; trace chalcopyrite with opt-cb.</p>							
143.0	281.3	<p><u>Matchewan Diabase</u></p> <p>-grades from upper contact at 32° to CIA from fine grained, black; to medium-grained black; slightly magnetic throughout; very blocky core.</p> <p>143.0 to 190.0: very block and ground core.</p>							
281.3	288.7	<p><u>Chloritic Andesite</u></p> <p>-brecciated upper contact with Db. at 65° to CIA; somewhat shored in epilitic downwards; brittle qtz-cb. fracturing evident.</p>							

LANGRIDGES - TORONTO - 366-1168

DIAMOND DRILL RECORD

NAME OF PROPERTY Buckingham Mine
 HOLE NO. 889.20 SHEET NO. 6

FOOTAGE		DESCRIPTION	SAMPLE			ASSAYS			
FROM	TO		NO.	% SULPHIDES	FOOTAGE FROM TO TOTAL	%	%	OZ./TON	OZ./TON
		286.8 to 287.6: opt. cb. breccia zone with reddish-brown alteration of cb. in coarse xenolithic cherts, no sulfide noted.	6909		286.0 288.0 2.0			234 391	
			6910		288.0 290.0 2.0			319	
288.7	289.8	<u>Granophytic Quartz-Carbonate Zone</u> - contacts with chloritic andesite schistose at 25° to CIA; medium to coarse intrusive to granitic-type texture to zone comprised of quartz and white carbonate; no mineralization noted.	6911		290.0 294.0 4.0			355	
289.8	297.0	<u>Chloritic Andesite</u> - as previous; with up to 5% fracture-filling white opt. cb. at irregular orientations to core; trace granophytic opt. cb. veins.							
	297.0	<u>End of Hole.</u>							

LANGRIDGES - TORONTO - 366-1168



Ministry of Northern Development and Mines

Report of Work

DOCUMENT No. W8908-20



41P11SE0154 35 ASQUITH

900

Name and Postal Address of Recorded Holder

Asquith Resources Inc.

T 4759

907 - 110 Erskine Ave., Toronto, Ontario M4P 1Y4

Summary of Work Performance and Distribution of Credits

Total Work Days Cr. claimed 4,000	Mining Claim			Work Days Cr.	Mining Claim			Work Days Cr.	Mining Claim		
	Prefix	Number			Prefix	Number			Prefix	Number	
for Performance of the following work. (Check one only)	see	attached	list								
<input type="checkbox"/> Manual Work											
<input type="checkbox"/> Shaft Sinking Drifting or other Lateral Work.											
<input type="checkbox"/> Compressed Air, other Power driven or mechanical equip.											
<input type="checkbox"/> Power Stripping											
<input checked="" type="checkbox"/> Diamond or other Core drilling											
<input type="checkbox"/> Land Survey											

RECEIVED
MAY 8 1989
11.15 am

All the work was performed on Mining Claim(s): L 980038

Required Information: eg: type of equipment, Names, Addresses, etc. (See Table Below)

Drill Contractor: MacKenzie Drilling Ltd.
Box 53, Timmins, Ontario P4N 7C5

Drill : Longyear 38, BQ core size

Supervision by : J. L. Tindale & Associates Inc.
907 - 110 Erskine Ave., Toronto, Ont. M4P 1Y4

Core Storage : on racks @ Roy Annett, Shining Tree, Ont.

Hole No's. : B89-3,4,7,9,10,11,12,13,14,15,16,17,20

Map of Claims for distribution of credits attached

Dates : Drilling carried out Jan. 26 to Feb. 24, 1989

ONTARIO GEOLOGICAL SURVEY
ASSESSMENT FILES
OFFICE
JUN 28 1989
RECEIVED

RECORDED
MAY 12 1989
Receipt # _____

Date of Report: May 1, 1989
Recorded Holder or Agent (Signature): J. L. Tindale

Certification Verifying Report of Work

I hereby certify that I have a personal and intimate knowledge of the facts set forth in the Report of Work annexed hereto, having performed the work or witnessed same during and/or after its completion and the annexed report is true.

Name and Postal Address of Person Certifying

J. L. Tindale, 907 - 110 Erskine Ave., Toronto, Ont. M4P 1Y4

Date Certified

May 1, 1989

Certified by (Signature)

J. L. Tindale

Table of Information/Attachments Required by the Mining Recorder

Type of Work	Specific information per type	Other information (Common to 2 or more types)	Attachments
Manual Work	Nil	Names and addresses of men who performed manual work/operated equipment, together with dates and hours of employment.	Work Sketch: these are required to show the location and extent of work in relation to the nearest claim post.
Shaft Sinking, Drifting or other Lateral Work			
Compressed air, other power driven or mechanical equip.	Type of equipment	Names and addresses of owner or operator together with dates when drilling/stripping done.	Work Sketch (as above) in duplicate
Power Stripping	Type of equipment and amount expended. Note: Proof of actual cost must be submitted within 30 days of recording.		
Diamond or other core drilling	Signed core log showing: footage, diameter of core, number and angles of holes.	Nil	Nil
Land Survey	Name and address of Ontario land surveyor.		

Twp.

Asquith Res
Asquith Twp

