



41P11SE0155 33 ASQUITH

010

DIAMOND DRILLING

TOWNSHIP: ASQUITH TWP.

REPORT NO: 33

WORK PERFORMED FOR: Asquith Resources Inc.

RECORDED HOLDER: Same as Above [xx]
: Other []

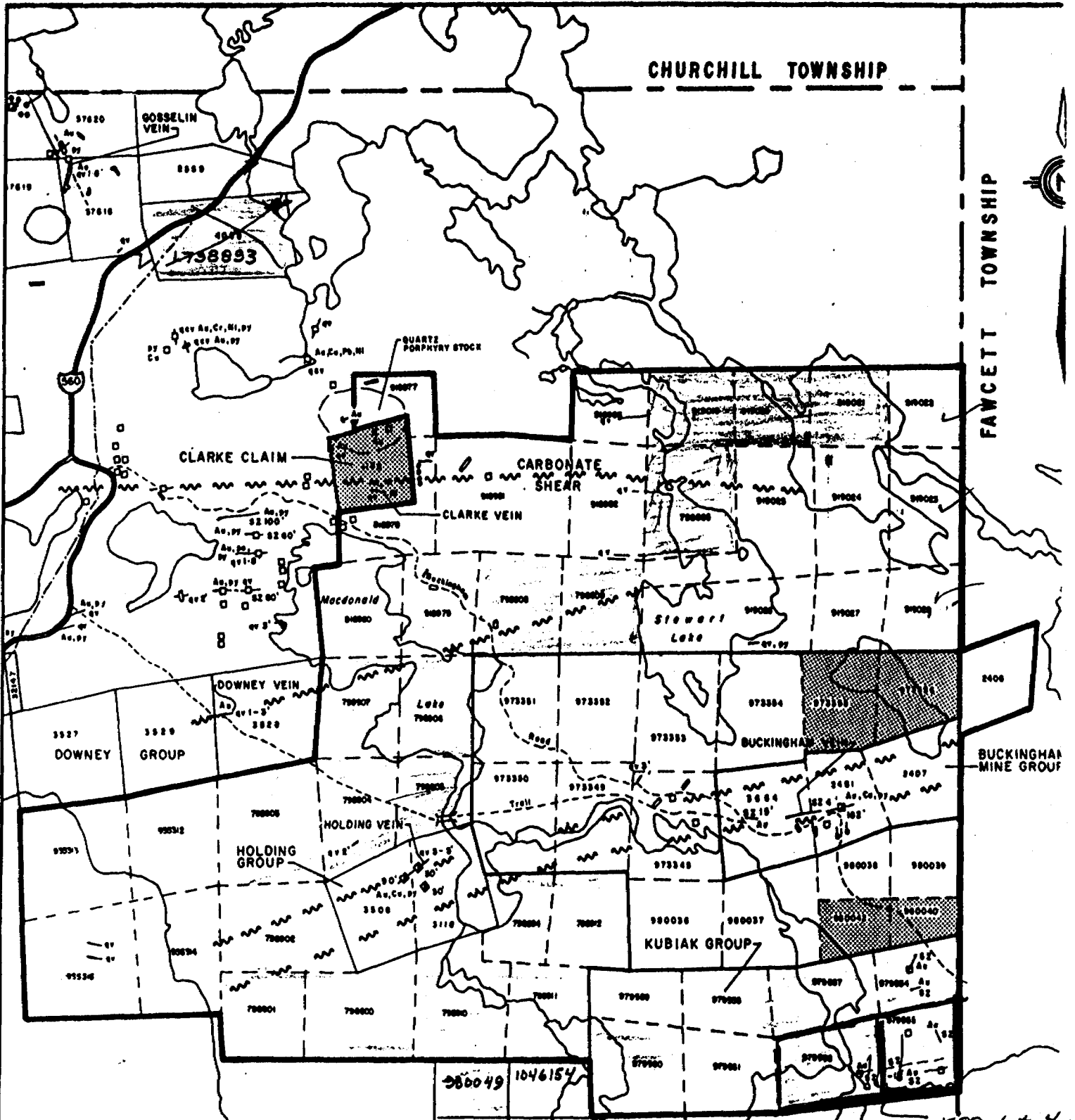
<u>Claim No.</u>	<u>Hole No.</u>	<u>Footage</u>	<u>Date</u>	<u>Note</u>
L 979556	K 89-1	350'	Jan/89	(1)(2)
	K 89-2	350'	Jan/89	(1)(2)
L 979555	K 89-3	350'	Jan/89	(1)(2)(3)
	K-89-4	342'	Jan/89	(1)(2)(3)

1392'

(1) W8908.049, date filed April 89

(2) D.D.H. Cross Sections added to file from OMEP report # OM 87-6-C-334 on July 10/91.

(3) Duplicate copies of logs added to file from OMEP report # OM 87-6-C-334 on July 10/91.



CHURCHILL TOWNSHIP

FAWCETT TOWNSHIP

560

GOSSELIN VEIN

1738893

QUARTZ PORPHYRY STOCK

CLARKE CLAIM

CARBONATE SHEAR

CLARKE VEIN

Macdonald

Stewart Lake

DOWNEY VEIN

DOWNEY GROUP

Lake

BUCKINGHAM VEIN

BUCKINGHAM MINE GROUP

HOLDING VEIN

HOLDING GROUP

KUBIAK GROUP

ASQUITH TOWNSHIP

TOWNSHIP

980049	1046154
980048	980046
LEGEND	
980047	1048645
	1048646

K89-1 to 4 ind



- Property Outline
- ▨ New claim acquisitions and deletions
- Quartz Vein
- Shear Zone
- Shot, depth in feet
- ~ Faults & Major Shear Zone
- Pit
- Trench
- D.D. Hole

ASQUITH RESOURCES
PROPERTY LOCATION I
ASQUITH TOWNSHIP

For Assessment Credit Distribution

SEAGER
LAKE



Papoose Creek

L 979556

KB9-2
(60°)

KB9-1
(60°)

KB9-4
(-45°)

KB9-3
(-45°)

L 979555

Cut grid lines

Claim post

Baseline

-25

claim line

-45

-65

-85

-105

Papoose Creek

Scale (Feet)



12+00W

6+00W

4+00W

2+00W

0+00

2+00E

4+00E

6+00E

8+00E

10+00E

ACQUITH RESOURCES INC.

Diamond Drill Hole
Location Plan

CLAIMS L 979555-979556

DDH'S KB9¹ to ⁴ incl.
ASQUITH TSP.

Scale 1" = 200' JAN/89

J.L. THORPE ASSOCIATES INC.

DIAMOND DRILL RECORD

J. L. TINDALE & ASSOCIATES INC.
 907-110 Erskine Ave.
 Toronto, Ontario M4P 1Y4

NAME OF PROPERTY ASQUITH TOWNSHIP - KUBIAC PROPERTY
 HOLE NO. K89-1 LENGTH 350 feet
 LOCATION KUBIAC ZONE - GRID 'C'
 LATITUDE 44°40'W DEPARTURE 9+30S
 ELEVATION _____ AZIMUTH 360° DIP -50°
 STARTED JANUARY 18 FINISHED JANUARY 20, 1989

FOOTAGE	DIP	AZIMUTH	FOOTAGE	DIP	AZIMUTH
150'	50°				
350'	44.5°				

HOLE NO. K89-1 SHEET NO. 1

REMARKS Casing Pulled.

BQ Core

LOGGED BY K.W. Johnson

FOOTAGE		DESCRIPTION	SAMPLE				ASSAYS				
FROM	TO		NO.	% SULPHIDES	FOOTAGE FROM	FOOTAGE TO	FOOTAGE TOTAL	%	% ppb	OZ/TON	OZ/TON
0.0	8.0'	Casing in Overburden; Bedrock									
8.0'	116.1	<p>Fine-Grained Andesite Tuff</p> <p>- dark green, fine-grained fragmental tuff; moderately chloritic with foliation at -45° to 9A; <1% quartz-carbonate along fracture in-fillings; non-magnetic; 2% carbonate noted giving rise to fragmental texture - occurs as interstitial growths or carbonatized fine-lapilli fragments.</p> <p>78.8 to 78.9: quartz-carbonate vein at 45° to CIA; trace euhedral pyrite emanating from contacts ~ 1 inch.</p> <p>95.6 to 96.4: 1/2 inch quartz-carbonate veins @ 35° to CIA with 3% fine iron carbonate along vein contacts; trace pyrite; 5% carbonate along stem planes at lower contact.</p>									
			3283		95.5	96.5	1.0		11	<.001	

ONTARIO GEOLOGICAL SURVEY
 ASSESSMENT FILES
 OFFICE
 FEB 17 1989
 RECEIVED

DIAMOND DRILL RECORD

NAME OF PROPERTY KUBIAC PROPERTY
HOLE NO. K88-1 SHEET NO. 2

FOOTAGE		DESCRIPTION	SAMPLE			ASSAYS				
FROM	TO		NO.	% SULPHIDES	FOOTAGE		%	%	OZ. TON	GT. TON
					FROM	TO				
		- at 104.0 feet fragmental tuff becomes fine grained with slight foliation at 50° to CIA.								
116.1	127.5	Feldspar Porphyry Dyke - medium-grained, grey-green porphyritic dyke with 28% white to rose colored feldspar in sub-rounded growths; trace fine disseminated pyrite throughout; <1% thin quartz-carbonate stringers at 15° to CIA; 40% coarse blades and sub-rounded growths of chlorite throughout; 5% pyrite in streaks at lower contact with epidote; upper contact sharp at 38° to CIA, lower contact at 55° to CIA.	3284		116.0	120.0	4.0	5	2.001	
			3285		120.0	124.0	4.0	25	"	
			3286		124.0	127.5	3.5	6	"	
			3287		127.5	128.5	1.0	7	"	
127.5	186.6	Chloritic Fragmental Tuff. - gradational between fine-grained carbonated fragmental tuff with 15% fine white carbonate marking foliation planes at 30° to								

RIGGS - ONTARIO - 368-1168

DIAMOND DRILL RECORD

NAME OF PROPERTY KUBIAC PROPERTY.

HOLE NO. K89-1

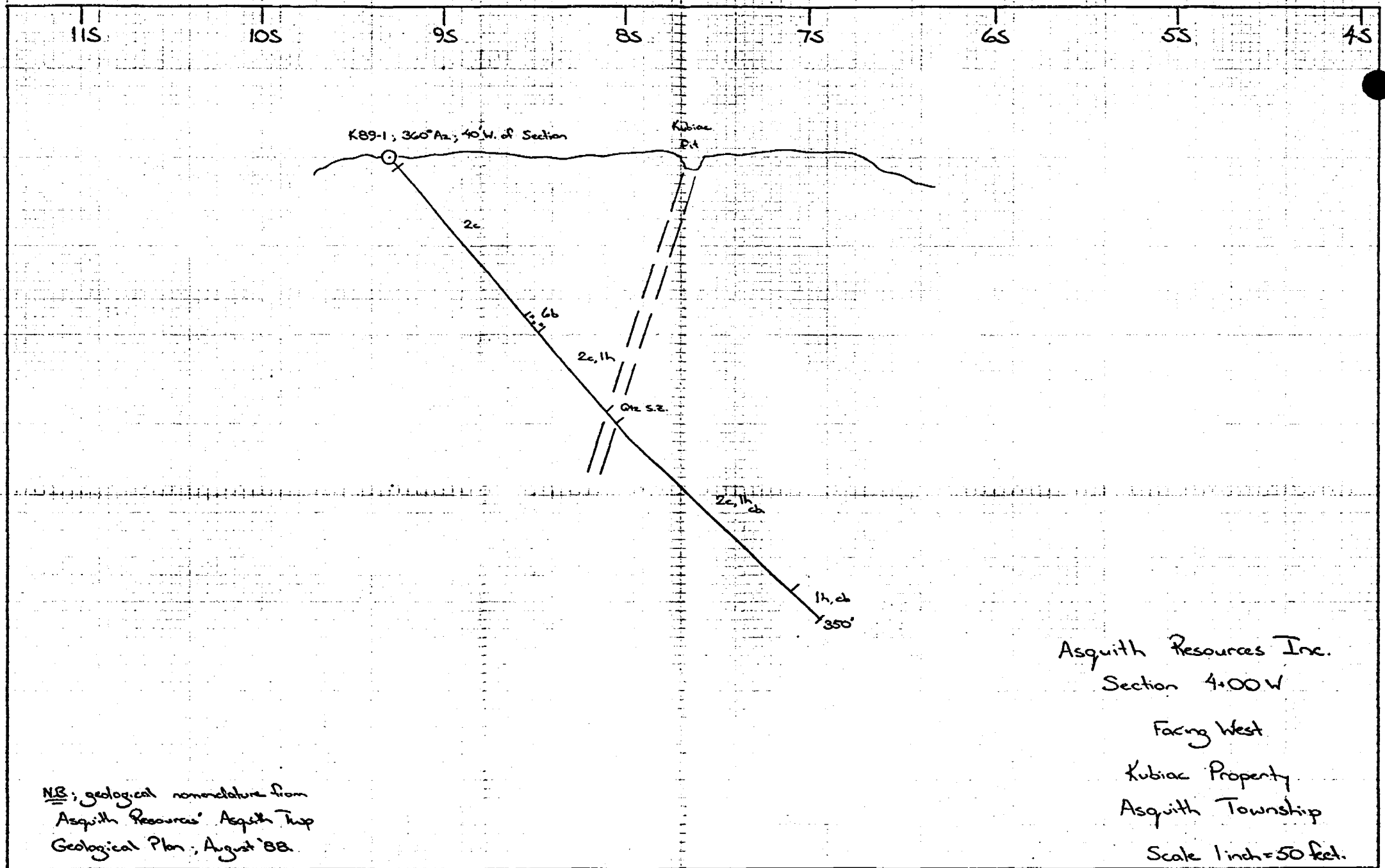
SHEET NO. 3

FOOTAGE		DESCRIPTION	SAMPLE			ASSAYS					
FROM	TO		NO.	% SULPHIDES	FOOTAGE			%	%	OZ. TON	GT TON
					FROM	TO	TOTAL				
		C/A.									
		137.0 to 140.8 : 5% fracture filling carbonate in sheared chloritic tuff., trace pyrite.									
		-at 182.0 becomes more carbonated.									
			3288		184.0	186.5	2.5		18	.001	
186.6	194.6	Quartz-Shear Zone	3289		186.5	189.0	2.5		29	.001	
		-sheared chloritic fragmental	3290		189.0	191.0	2.0		31	.001	
		volcanics cut by two generations of quartz	3291		191.0	195.0	4.0		2558	.074	
		and quartz-carbonate veins; volcanics sheared	3292		195.0	197.0	2.0		2147	.062	
		at 45° to C/A; 10% quartz veining thru									
		section as a whole, 1st generation of quartz									
		veining at 35° to C/A shows evidence of									
		brecciation into sub-angular clasts oriented									
		parallel to shearing; 2nd generation									
		veins at 35° to 45° cross-cut 1st generation									
		veining and shearing; up to 2% medium-									
		grained cubical pyrite associated with									
		sheared sections; 5% iron carbonate									
		along shear-plane partings.									

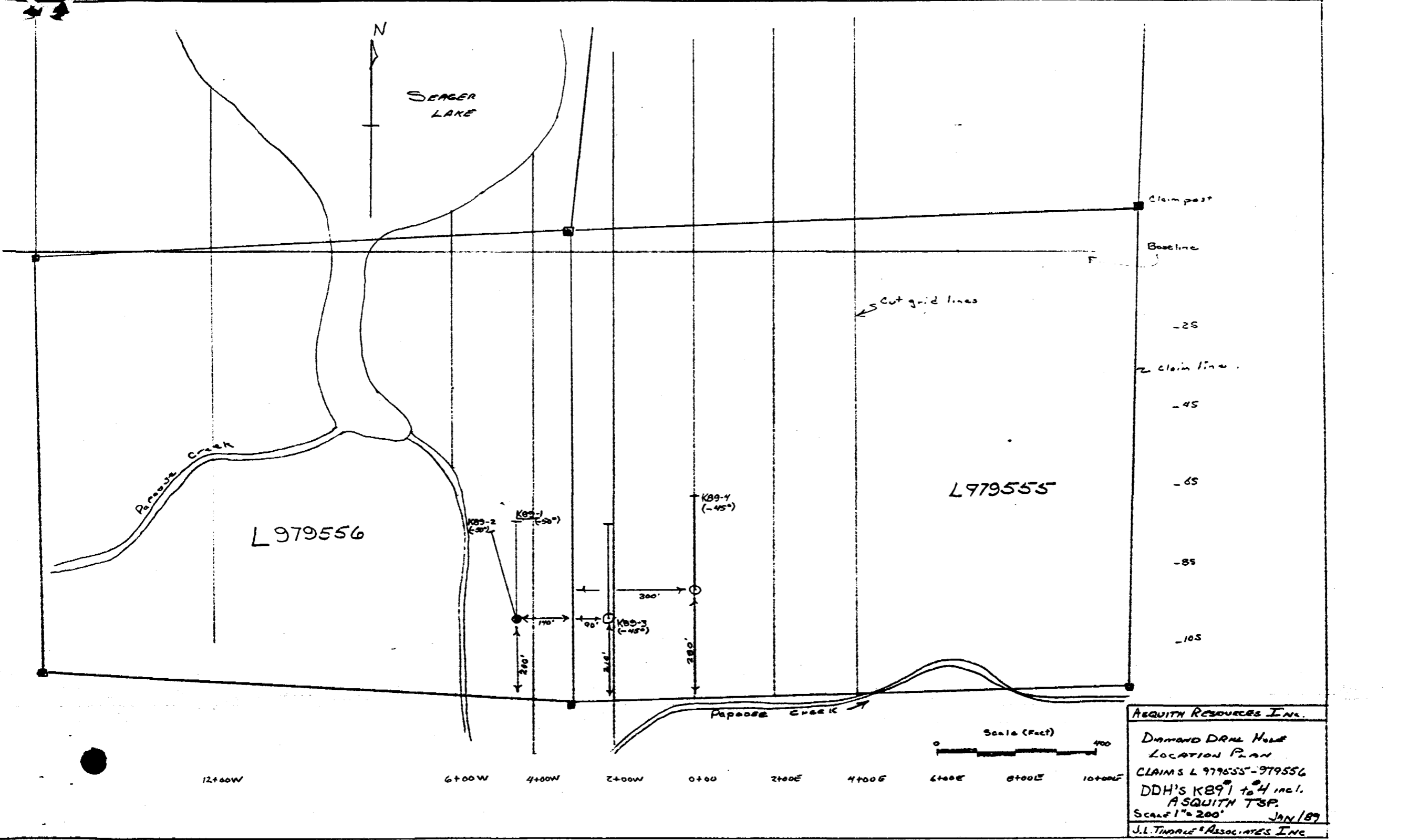
DIAMOND DRILL RECORD

NAME OF PROPERTY KUBIAC PROPERTY
 HOLE NO. K89-1 SHEET NO. 4

FOOTAGE		DESCRIPTION	SAMPLE			ASSAYS				
FROM	TO		NO.	% SULPHIDES	FOOTAGE		%	%	OZ. TON	OZ. TON
					FROM	TO				
194.6	330.0	Sheared, Chloritic Fragmental Tuff - dark green, moderately foliated and carbonatized chloritic volcanic; similar to previous units up-hole; < 2% thin sandy quartz stringer veinlets at 45° to CIA; 1% quartz carbonate veinlets at 30° to CIA. becomes less-sheared down-hole at 240.0 feet.								
		315.6 to 316.0 } white quartz-carbonate 326.5 to 327.4 } veins at 45° to CIA with fractured and sheared chloritic schwaess.	3297		325.0	328.0	3.0	35	.001	
3300	3500	Sheared and Carbonatized Chloritic Volcanic - strongly sheared and carbonatized chloritic tuff with 40% white carbonate as interstitial growths between chloritic partings; sections up to 1 foot exhibit random orientations suggesting late-stage shearing; grades back into fine chloritic tuff at 340.0 feet.								



NB; geological nomenclature from
Asquith Resources' Asquith Trp
Geological Plan; August '88.



AQUITY RESOURCES INC.
 Diamond Drill Hole
 LOCATION PLAN
 CLAIMS L 979555-979556
 DDH'S KB9¹ to ⁴ incl.
 ASQUITH TSP.
 Scale 1" = 200'
 JAN/89
 J.L. TINDALE & ASSOCIATES INC.

DIAMOND DRILL RECORD

NAME OF PROPERTY ASQUITH TOWNSHIP PROPERTY
 HOLE NO. K89-2 LENGTH 350 Feet
 LOCATION Asquith Township; Kubiac Property - Grid 'C'
 LATITUDE 4+40W DEPARTURE 9+30S
 ELEVATION _____ AZIMUTH 345° DIP -50°
 STARTED JANUARY 20 FINISHED JANUARY 21, 1989

FOOTAGE	DIP	AZIMUTH	FOOTAGE	DIP	AZIMUTH
150'	49°				
350'	49°				

HOLE NO. K89-2 SHEET NO. 1
 REMARKS Casing Pulled
BQ Core
 LOGGED BY K.W. Johnson

FOOTAGE		DESCRIPTION	SAMPLE			ASSAYS					
FROM	TO		NO.	% SULPHIDES	FOOTAGE		%	%	OZ/TON	OZ/TON	
					FROM	TO	TOTAL				
0.0	4.0	Casing in Bedrock									
4.0	26.0	Chloritic Fragmental Tuffs. -dark-green, fine-grained chloritic tuff; slight fragmental texture; <1% quartz-carbonate in thin stringers at 25° to CIA.; 15% broken to blocky core. 22.6 to 23.7: quartz vein; broken core; trace to 1% pyrite noted along chloritic selvages; trace iron-carbonate.	3294		23.0	25.0	20		19	.001	
26.0	27.4	Carbonatized, Chloritic Fragmental Tuffs. - chloritic tuff becomes progressively more carbonatized with up to 15% white-carbonate in fracture-infillings at 0° to 30° to CIA, the white-carbonate fractures post-dating grey, quartz-carbonate veins at 45° to CIA; trace pyrite evident.									

ONTARIO GEOLOGICAL SURVEY
 ASSESSMENT FILES
 OFFICE
 FEB 17 1989
 RECEIVED

DIAMOND DRILL RECORD

NAME OF PROPERTY LUBIAC PROPERTY
 HOLE NO. K89-2 SHEET NO. 2

FOOTAGE		DESCRIPTION	SAMPLE			ASSAYS				
FROM	TO		NO.	% SULPHIDES	FOOTAGE		%	%	G/TON	G/TON
					FROM	TO				
		37.9 to 38.1 } bull-white quartz vein								
		41.3 to 41.8 } at 45° to CIA.								
		54.0 to 58.8 : quartz-carbonate	3295		45.0	48.0	3.0	52	.002	
		shear zone; up to 35% carbonate	3296		48.0	51.0	3.0	31	.001	
		fractures and quartz-carbonate veins	3297		51.0	54.0	3.0	35	.001	
		at 30° to CIA, and exhibit brecciation	3298		54.0	59.0	5.0	10	<.001	
		at lower section; 1% very fine	3299		59.0	60.0	1.0	531	.015	
		pyrite associated with white-carbonate								
		in grey quartz veins.								
		- at 69.0 feet foliation swings from								
		40° to CIA to 15° to CIA indicating open folding;								
		foliation marked by white carbonate; fold axes								
		appear at 20° to CIA.								
		86.2 to 87.0 : quartz-carbonate	3300		86.0	87.5	1.5	27	.001	
		vein at 10° to CIA; 2% coarse pyrite	3301		87.5	91.0	2.5	8	<.001	

DIAMOND DRILL RECORD

NAME OF PROPERTY KUBIAK PROPERTY

HOLE NO. K89-2 SHEET NO. 3

FOOTAGE		DESCRIPTION	SAMPLE			ASSAYS					
FROM	TO		NO.	% SULPHIDES	FOOTAGE			%	%	02.10%	07.10%
				FROM	TO	TOTAL					
87.4	92.7	Feldspar Porphyry Dyke - massive, medium-grained, grey-green intrusive with 20% white feldspar in matrix of chlorite shales; trace to 1% very finely disseminated pyrite emanating from upper contact; lower contact sharp at 58° to CIA.									
92.7	200.0	Chloritic Fragmental Tuff - dark green, soft, strongly chloritic and fine grained with 15% interstitial white carbonate throughout; occasional quartz-carbonate vein evident. 109.1 to 109.3: white quartz-carb. vein at 35° to CIA; trace pyrite 121.8 to 122.6: smoky quartz vein and quartz-carbonate veins at 30° to CIA; veins up to 3 inches in width.									

RIGGS TORONTO - 366-1166

DIAMOND DRILL RECORD

NAME OF PROPERTY Kubiac Property

HOLE NO. K89-2 SHEET NO. 3

FOOTAGE		DESCRIPTION	SAMPLE			ASSAYS							
FROM	TO		NO.	% SULPHIDES	FOOTAGE			%	%	OZ. TON	OZ. TON		
					FROM	TO	TOTAL						
		125.0 to 125.5; quartz-carbonate vein at 20° to CIA with up to 20% medium-grained cubical pyrite disseminated in vein material.	3302		125.0	126.0	1.0			12	<.001		
		145.3 to 145.6; quartz-carbonate vein at 15° to CIA with 5% cubical pyrite at vein selvage; 10% muscovite blades along chloritic contacts.											
		149.9 to 151.2; quartz-carbonate vein at 15° to CIA with 10% very fine to medium-grained pyrite disseminated within vein material.	3303		149.0	151.0	2.0			23	.001		
		157.0 to 159.5; 1/2 inch quartz-carbonate vein meandering along CIA at 0°.											
		170.5 to 172.0; smoky quartz in brecciated and folded veinlets with	3304		170.0	174.0	4.0			20	.001		

RIGGS TORONTO - 366-1168

DIAMOND DRILL RECORD

NAME OF PROPERTY KUBIAC PROPERTY
 HOLE NO. K89-2 SHEET NO. 4

FOOTAGE		DESCRIPTION	SAMPLE			ASSAYS				
FROM	TO		NO.	% SULPHIDES	FOOTAGE		%	%	OZ. TON	OZ. TON
					FROM	TO				
		3% white carbonate along thin fractures.								
		172.6 to 173.5: white quartz-carbonate vein with irregular contacts; no sulfides noted; two generations of veining incorporated, ore + carb. ore - carbonate.								
		183.2 to 183.4: quartz carbonate vein with stringer of euhedral medium pyrite at 40° to CIA.								
2000	230.5	Tuffaceous Sediments - grades from chloritic tuffs to fine-grained, grey fine-grained sediments with 3% fine interstitial carbonate marking schistosity; at 30° to 25° to CIA; < 5% quartz-carbonate fracture-fillings at 0° to 15° to CIA.								

DIAMOND DRILL RECORD

NAME OF PROPERTY KUBIAC PROPERTY
HOLE NO. K 89-2 SHEET NO. 5

FOOTAGE		DESCRIPTION	SAMPLE			ASSAYS					
FROM	TO		NO.	% SULPHIDES	FOOTAGE			%	%	OZ. TON	OZ. TON
					FROM	TO	TOTAL				
		slight bedding or banding evident at 212.0 feet. circulation faulting evident with fold axes at 80° to CIA.									
		218.0 to 219.3 } quartz-carbonate	3305		218.0	222.5	4.5		11	<.001	
		220.2 to 221.3 } veins and fractures -	3306		222.5	226.0	3.5		13	<.001	
		fillings in folded tuffaceous sediments;	3307		226.0	230.5	4.5		18	.001	
		veins show evidence of folding	3308		230.5	235.5	5.0		18	.001	
		concordantly with sedimentary beds;									
		slightly chloritic.									
		221.3 to 222.5: micro-breccia									
		zone with 3 to 5% quartz-carbonate									
		fracture fillings; 3% fine pyrite									
		disseminated throughout.									
		225.8 to 230.5: micro-breccia;									
		as previous; grey with siliceous									
		carbonatized clasts to 1/4 inch									
		diameter.; 1% fine pyrite throughout.									

DIAMOND DRILL RECORD

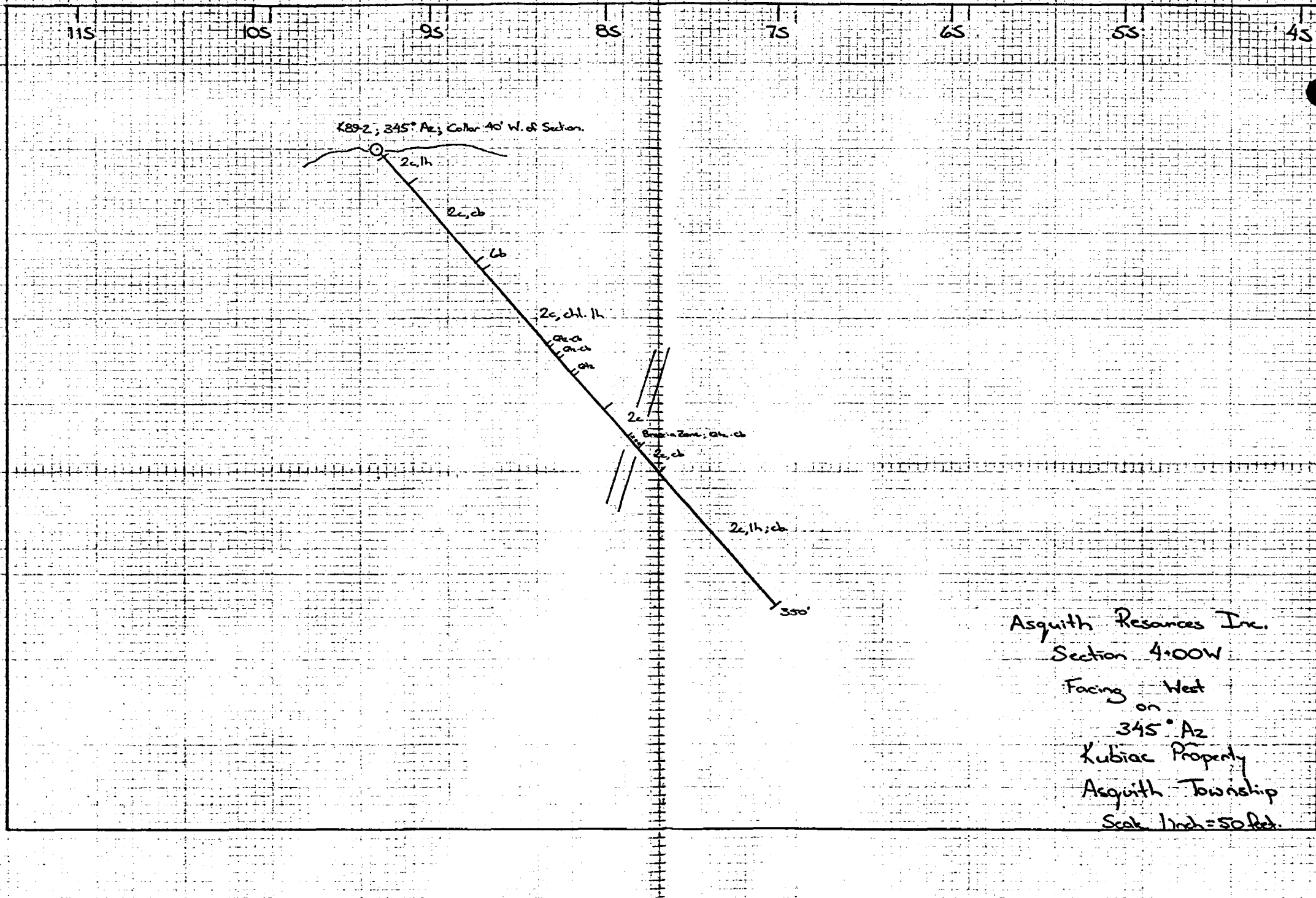
NAME OF PROPERTY KUBIAL PROPERTY
 HOLE NO. K89-2 SHEET NO. 6

FOOTAGE		DESCRIPTION	SAMPLE			ASSAYS				
FROM	TO		NO.	% SULPHIDES	FOOTAGE		%	%	02. TON	02 TON
				FROM	TO	TOTAL				
230.5	247.0	Carbonatized Volcanic - dark grey with interstitial white carbonate to 15%; < 1% carbonate in stringers; massive texture, fine to med-fine grained; trace to 1% disseminated pyrite throughout. - grades into carbonatized fragmental tuff as previous.								
247.0	350.0	Carbonatized Chloritic Fragmental Tuff. - dark green, fine grained, foliated fragmental tuff with foliation at 35° to CIA. 5 to 15% fine carbonate, marks foliation as discontinuities; up to 2% quartz-carbonate in thin fracture fillings. - becomes medium-grained at 298.0 feet. - grades back into fine-grained variety at 321.0 feet!								

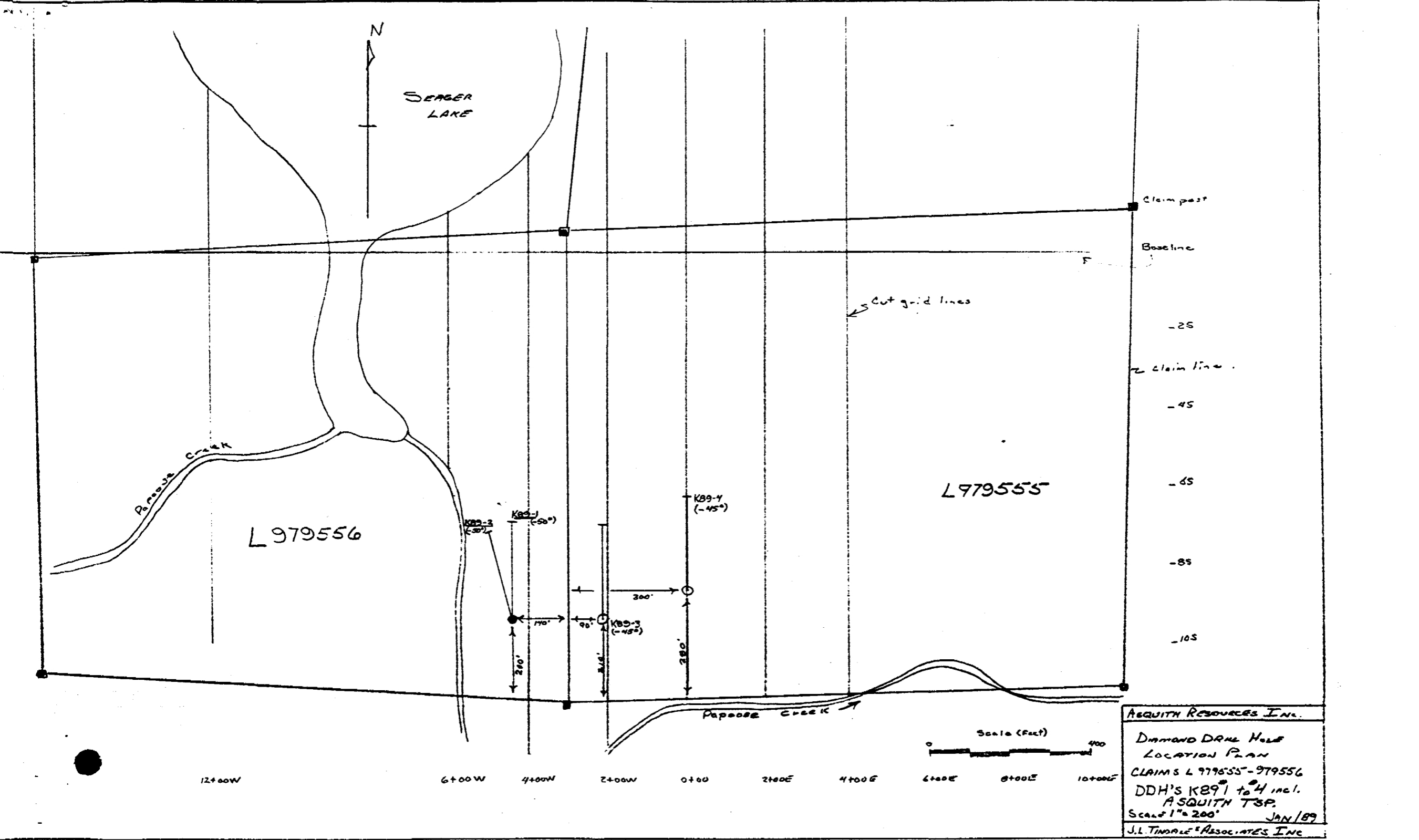
DIAMOND DRILL RECORD

NAME OF PROPERTY KUBIAK PROPERTY.
 HOLE NO. K89-2 SHEET NO. 7

FOOTAGE		DESCRIPTION	SAMPLE			ASSAYS				
FROM	TO		NO.	% SULPHIDES	FOOTAGE		%	%	02. TON	07. TON
				FROM	TO	TOTAL				
		335.0 : grades into moderate to strongly foliated at 45° to CIA with 25% white carbonate marking foliation planes; strongly sheared in places, no mineralization noted.								
		349.5 to 350.0 : white quartz-carb. vein at 45° to CIA; trace pyrite along chloritic selvages.	3309	349.0	350.0	1.0		19	.001	
350.0		End of Hole.								



Asquith Resources Inc.
Section 4.00W
Facing West
on
345° Az
Kubiac Property
Asquith Township
Scale 1 inch = 50 feet.



ASQUITH RESOURCES INC.
 DIAMOND DRILL HOLE
 LOCATION PLAN
 CLAIMS L 979555 - 979556
 DDH'S KB91 to 4 incl.
 ASQUITH TSP.
 Scale 1" = 200' JAN/89
 J.L. TIMALE ASSOCIATES INC

DIAMOND DRILL RECORD

NAME OF PROPERTY ASQUITH TOWNSHIP PROPERTY
 HOLE NO. K89-3 LENGTH 350 Feet
 LOCATION Asquith Township; Kubiac Property; Grid 'C'
 LATITUDE 2+13W DEPARTURE 9+28S
 ELEVATION _____ AZIMUTH 360° DIP -45°
 STARTED January 21 FINISHED January 22, 1989

FOOTAGE	DIP	AZIMUTH	FOOTAGE	DIP	AZIMUTH
150'	39°				
350'	37°				

HOLE NO. K89-3 SHEET NO. 1
 REMARKS Casing Pulled
BQ CORE
 LOGGED BY K.W. Johnson

FOOTAGE		DESCRIPTION	SAMPLE			ASSAYS			
FROM	TO		NO.	% SULPHIDES	FOOTAGE FROM TO TOTAL	%	%	OZ/TON	OZ/TON
0.0	7.0	Casing in Overburden and Bedrock							
7.0	143.7	<p>Andesite Tuff</p> <p>- fine-crained, grey-green; massive to slightly foliated with fine carbonatized lensing. Foliation at 45° to clin; <1% white quartz-carbonate stringers at 25 to 40° to clin cause rounding of some pebbles; occasional hollowed sub-angular pebbles on bed from 40.0 feet at 40 to 45° to clin</p> <p>7.0 to 15.0: blocky cores; spherule breccia with subangular granules, some to 0.75 inch incorporated at 10.0 to 11.0 feet.</p> <p>70.6 to 71.7: fault gouge; fine-chlorite, carbonated.</p> <p>- up to 5% quartz-carbonate alteration from 72.0 feet in irregular patches and stringers.</p>							

ONTARIO GEOLOGICAL SURVEY
 ASSESSMENT FILES
 OFFICE
 FEB 17 1989
 RECEIVED

DIAMOND DRILL RECORD

NAME OF PROPERTY KUSIAC PROPERTY
 HOLE NO. K89-3 SHEET NO. 2

FOOTAGE		DESCRIPTION	SAMPLE			ASSAYS					
FROM	TO		NO.	% SULPHIDES	FOOTAGE			%	%	02. TON	07 TON
					FROM	TO	TOTAL				
		-at 95.0 feet tuff becomes moderately chloritic, dark green in colour, evidence of folding (open folds) about axes at 90° to CIA; 1% coarse irregular growths of pyrite along structural sections.									
		101.0 to 102.0: 20% quartz-carbonate veins at 65° to CIA									
		102.5 to 108.0: broken and blocky core.									
		-from 108.0 feet tuff becomes medium-grained and moderately foliated and carbonatized; foliation at 45° to CIA									
			3310		128.0	129.5	1.5		8	<.001	
		129.5 to 130.2: dull white carbonate vein at 30° to CIA; no mineralization noted.	3311		129.5	130.5	1.0		6	<.001	
		132.4: gradational contact look into fine grained carbonitic tuff, massive.									

ROGERS TORONTO - 366-1168

DIAMOND DRILL RECORD

NAME OF PROPERTY KUBIAC PROPERTY
 HOLE NO. K89-3 SHEET NO. 3

FOOTAGE		DESCRIPTION	SAMPLE			ASSAYS					
FROM	TO		NO.	% SULPHIDES	FOOTAGE			%	%	G/TON	G/TON
					FROM	TO	TOTAL				
143.7	176.0	Carbonized Chloritic Fragmental Tuff - mottled dark green/white; medium grained; 20% white carbonate interstitially within green chlorite shards; massive; trace carbonate in fracture - fillings at low angles to core; trace pyrite along fractures. - grades into fine-grained chloritic andesite at 176.0 feet.									
176.0	234.1	Chloritic Andesite - dark green; fine-grained with very slight foliation at 30° to CIA; thin bleached fractures cross-cut at 15° to CIA with very slight epidote alteration evident. 177.0 to 177.3: quartz-carbonate vein at 50° to CIA 183.7 to 183.9: quartz-carbonate vein at 50° to CIA									

RIDGEWAY TORONTO - 366-1168

DIAMOND DRILL RECORD

NAME OF PROPERTY KUBIAK PROPERTY
 HOLE NO. K89-3 SHEET NO. 4

FOOTAGE		DESCRIPTION	SAMPLE				ASSAYS					
FROM	TO		NO.	% SULPHIDES	FOOTAGE			%	%	OZ. TON	OZ. TON	
					FROM	TO	TOTAL					
		190.7 to 190.9: white quartz vein at 50° to CIA with 1% diffuse potassic alteration at vein contacts, trace very fine pyrite	3312		190.5	191.5	1.0		<5	<.001		
		-grades into fine carbonized fragmental stuff at 198.0 feet.										
		218.2 to 221.3: 40% quartz-carbonate stringers at 40° to CIA in sheared chloritic schist; slight epidote alteration at upper contact; quartz-carbonate veins up to 2 inch widths; trace fine pyrite along chloritic schists.	3313		218.0	221.5	3.5		71	.002		
		230.7 to 231.1 } white quartz-carbonate veins at 30° to CIA	3314		230.0	234.0	4.0		18	<.001		
		231.4 to 231.5 } and irregular at contacts; trace pink/rose carbonate noted; chloritic schist	3315		234.0	239.0	5.0		<5	"		
		233.4 to 234.0 } and irregular at contacts; trace pink/rose carbonate noted; chloritic schist	3316		239.0	244.0	5.0		<5	"		
			3317		244.0	247.0	3.0		<5	"		
			3318		247.0	250.0	3.0		<5	"		

8911-139-01010 - 366-5398

DIAMOND DRILL RECORD

NAME OF PROPERTY Kubiac Property

HOLE NO. K87-3 SHEET NO. 5

FOOTAGE		DESCRIPTION	SAMPLE			ASSAYS						
FROM	TO		NO.	% SULPHIDES	FOOTAGE			%	%	GT. TON	GT. TON	
					FROM	TO	TOTAL					
234.1	251.8	Feldspar Porphyry Dyke - medium grained, very equiaxed intrusive with steep contacts 35° to CIA; up to 20% white calcite in matrix of fine to coarse chlorite shreds; <1% white carbonate lenses - illite evident, perhaps c. 1 by block, very fine-grained massive, lenticular dykes at 35° to 40° to CIA. 243.8 to 244.2: lamprophyre dyke at 40° to CIA; slate grey in colour. 244.2 to 250.0 lamprophyre dyke, slightly magnetic; massive, black with trace medium grained calcite veins disseminated throughout. chilled upper and lower contacts at 20° to CIA up to 1 inch from porphyry contact. 250.0 to 250.6: chlorite calcite.										

RIGGS TORONTO - 366-1168

DIAMOND DRILL RECORD

NAME OF PROPERTY KUBIAC MOUNTAIN RTY.
 HOLE NO. 189-3 SHEET NO. 6

FOOTAGE		DESCRIPTION	SAMPLE			ASSAYS					
FROM	TO		NO.	% SULPHIDES	FOOTAGE		%	%	OZ. TON	OZ. TON	
					FROM	TO	TOTAL				
		250.6 to 254.8: feldspar porphyry dyke; chilled upper and lower contact at 30° and 25° to CIA respectively									
254.8	350.0	Chloritic Andesite (Carbonatized) - fine-grained, dark green as previous with sections of up to 5% quartz-carbonate alteration evident. in siliceous and idiosyncratic quartzes:									
		263.7 to 264.4 } quartz-carbonate									
		265.2 to 266.3 } veins at 40 to 45°	3319		263.5	268.0	4.5	10	4.001		
		267.5 to 267.8 } to CIA; slight conc. carbonate at lower vein.									
		298.4 to 298.9 } moderate diffuse									
		301.0 to 302.0 } epidote alteration cut by 3% thin smoky quartz and quartz-carbonate fracture infillings.									
350.0		End of Hole									

DIAMOND DRILL RECORD

J. L. TINDALE & ASSOCIATES INC.
907-110 Erskine Ave.
Toronto, Ontario M4P 1Y4

NAME OF PROPERTY ASQUITH TOWNSHIP PROPERTY
 HOLE NO. K89-3 LENGTH 350 Feet
 LOCATION Asquith Township; Kubiac Property; Grid 'C'
 LATITUDE 2+13W DEPARTURE 9+28S
 ELEVATION _____ AZIMUTH 360° DIP -45°
 STARTED January 21 FINISHED January 22, 1989

FOOTAGE	DIP	AZIMUTH	FOOTAGE	DIP	AZIMUTH
150'	39°				
350'	37°				

HOLE NO. K89-3 SHEET NO. 1
 REMARKS Casing Pulled
B Q CORE
 LOGGED BY K. W. Johnson

FOOTAGE		DESCRIPTION	SAMPLE				ASSAYS						
FROM	TO		NO.	% SULPHIDES	FOOTAGE			%	%	OZ/TON	OZ/TON		
					FROM	TO	TOTAL						
0.0	7.0	Casing in Overburden and Bedrock											
7.0	143.7	Andesite Tuff - fine grained, grey-green; massive to slightly foliated with fine carbonatized lenticles marking foliation at 45° to CIA; <1% white quartz-carbonate stringers at 25 to 40° to CIA occur randomly throughout sequence; occasional tuffaceous sedimentary horizon or band from 40.0 feet at 40 to 45° to CIA. 7.0 to 15.0 : blocky core; syenite boulder with subrounded greenstone clasts to 0.75 inch incorporated at 10.0 to 11.0 feet. 70.6 to 71.7 : fault gouge; fissile chloritic, carbonatized. - up to 5% quartz-carbonate alteration from 72.0 feet in irregular patches and stringers.											

LANGRIDGES - TORONTO - 366-1168

DIAMOND DRILL RECORD

NAME OF PROPERTY KUSIAC PROPERTY

HOLE NO. KB9-3

SHEET NO. 2

FOOTAGE		DESCRIPTION	SAMPLE			ASSAYS				
FROM	TO		NO.	% SULPHIDES	FOOTAGE			OZ. TON	GT. TON	
				FROM	TO	TOTAL	%	%		
		-at 95.0 feet tuff becomes moderately chloritic, dark green in colour, evidence of folding (open folds) about axis at 90° to CIA; 1% coarse irregular growths of pyrite along sheared sections.								
		101.0 to 102.0: 20% quartz-carbonate veins at 65° to CIA								
		102.5 to 108.0: broken and blocky core.								
		-from 108.0 feet tuff becomes medium-grained and moderately foliated and carbonatized; foliation at 45° to CIA								
			3310	128.0	129.5	1.5		8	4.001	
		129.5 to 130.3: bull white quartz vein at 30° to CIA; no mineralization noted.	3311	129.5	130.5	1.0		6	<.001	
		132.4: gradational contact back into fine grained calcitic tuff, massive.								

DIAMOND DRILL RECORD

NAME OF PROPERTY KUBIAC PROPERTY
 HOLE NO. K89-3 SHEET NO. 3

FOOTAGE		DESCRIPTION	SAMPLE			ASSAYS				
FROM	TO		NO.	% SULPHIDES	FOOTAGE		%	%	OZ. TON	OZ. TON
					FROM	TO				
143.7	176.0	Carbonatized Chloritic Fragmental Tuff - mottled dark green/white; medium-grained; 20% white carbonate interstitially within green chlorite shards; massive; trace carbonate in fracture fillings at low angles to core; trace pyrite along fractures. - grades into fine-grained chloritic andesite at 176.0 feet.								
176.0	234.1	Chloritic Andesite - dark green; fine-grained with very slight foliation at 30° to CIA; thin bleached fractures cross-cut at 15° to CIA with very slight epidote alteration evident. 177.0 to 177.3: quartz-carbonate vein at 50° to CIA. 183.7 to 183.9: quartz-carbonate vein at 50° to CIA.								

DIAMOND DRILL RECORD

NAME OF PROPERTY KUBIAL PROPERTY
HOLE NO. K89-3 SHEET NO. 4

FOOTAGE		DESCRIPTION	SAMPLE				ASSAYS					
FROM	TO		NO.	% SULPH IDES	FOOTAGE		%	%	OZ. TON	GT. TON		
					FROM	TO					TOTAL	
		190.7 to 190.9: white quartz vein at 50° to CIA with 1% diffuse potassic alteration at vein contacts; trace very fine pyrite.	3312		190.5	191.5	1.0		<5	<.001		
		-grades into fine carbonatized fragmental tuff at 198.0 feet.										
		218.2 to 221.3: 40% quartz-carbonate stringers at 40° to CIA in sheared chloritic schist; slight epidote alteration at upper contact; quartz-carbonate veins up to 2 inch widths.; trace fine pyrite along chloritic schanges.	3313		218.0	221.5	3.5		71	.002		
		230.7 to 231.1 } white quartz-carbonate	3314		230.0	234.0	4.0		18	<.001		
		231.4 to 231.5 } veins at 30° to CIA	3315		234.0	239.0	5.0		<5	"		
		233.4 to 234.0 } and irregular at	3316		239.0	244.0	5.0		<5	"		
		contacts; trace pink/rose	3317		244.0	247.0	3.0		<5	"		
		carbonate noted; chloritic schanges	3318		247.0	250.0	3.0		<5	"		

DIAMOND DRILL RECORD

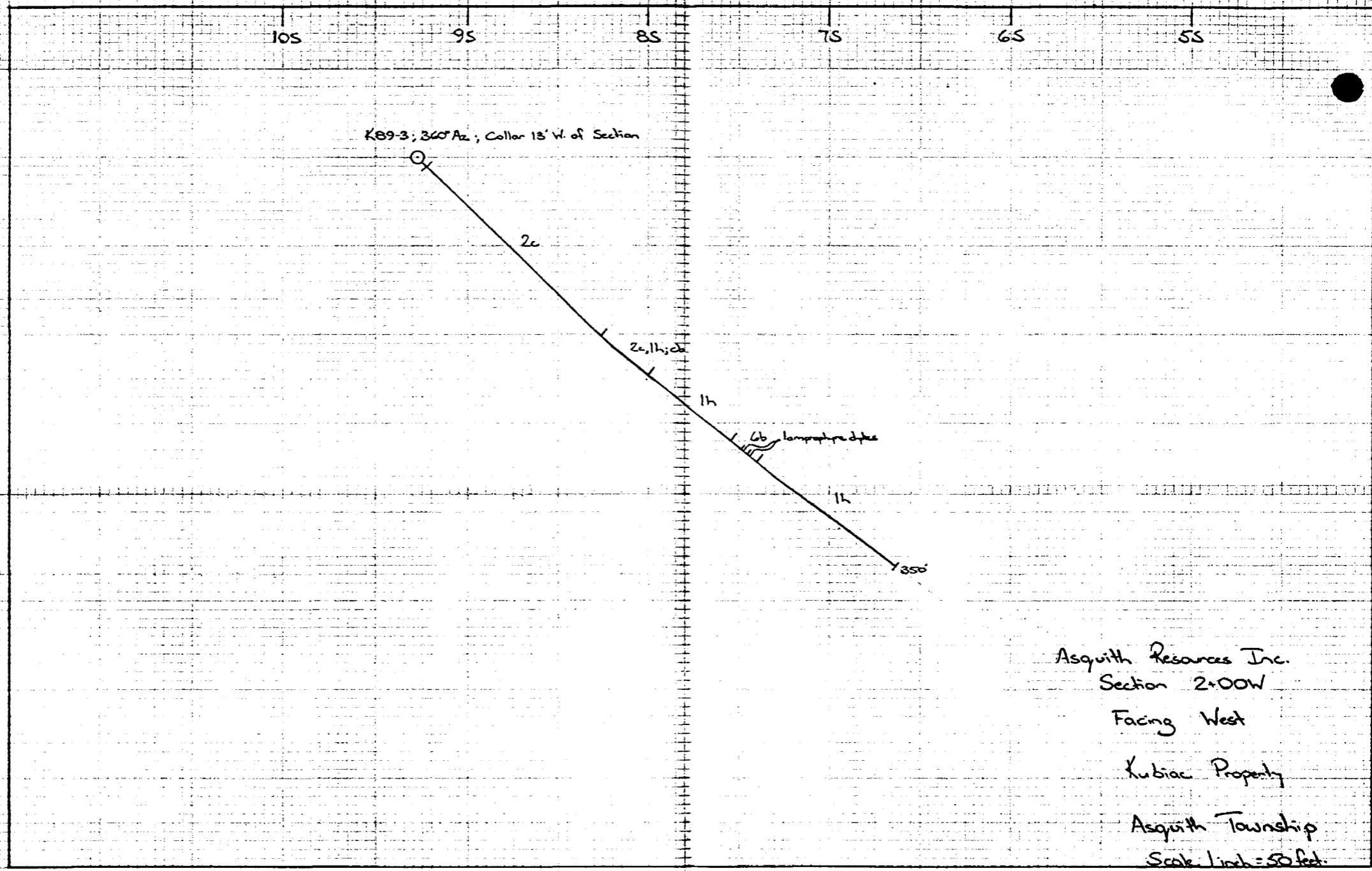
NAME OF PROPERTY Kubiac Property
 HOLE NO. K89-3 SHEET NO. 5

FOOTAGE		DESCRIPTION	SAMPLE			ASSAYS				
FROM	TO		NO.	% SULPHIDES	FOOTAGE		%	%	GT. TON	GT. TON
				FROM	TO	TOTAL				
234.1	254.8	Feldspar Porphyry Dyke - medium-grained, grey equigranular intrusive with sharp contacts 35° to CIA; up to 20% white feldspar in matrix of fine to coarse chlorite shards; <1% white carbonate fracture- fillings evident; porphyry cut by black, very-fine-grained massive lamprophyre dykes at 35° to 40° to CIA. 243.8 to 244.2: lamprophyre dyke at 40° to CIA; slate-grey in colour. 247.2 to 250.0 lamprophyre dyke; slightly magnetic; massive, black with trace medium-grained cubic pyrite disseminated throughout. chilled upper and lower contacts at 30° to CIA up to 1 inch from porphyry contact. 250.0 to 250.6: chloritic andesite								

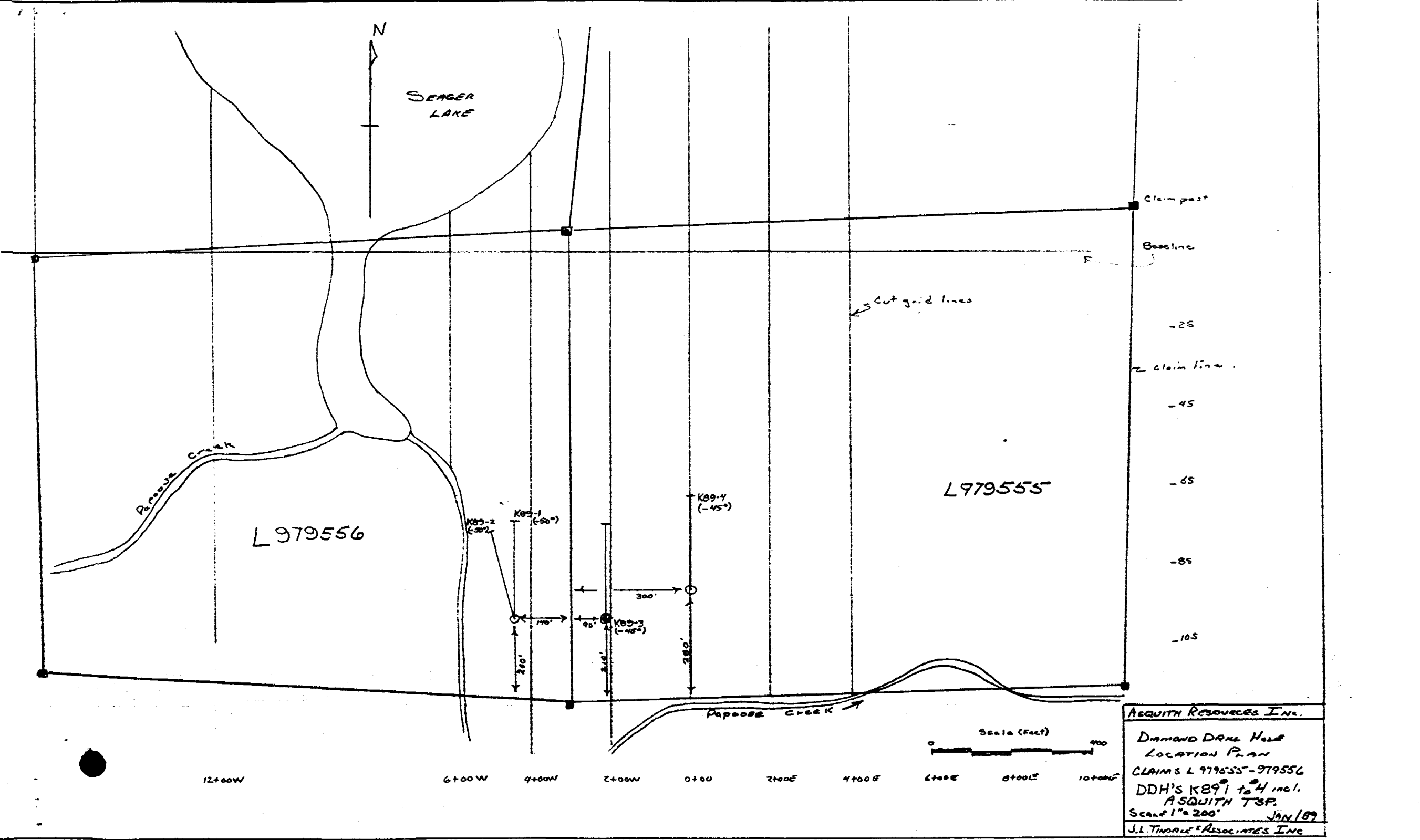
DIAMOND DRILL RECORD

NAME OF PROPERTY KUBIAC PROPERTY.
 HOLE NO. K89-3 SHEET NO. 6

FOOTAGE		DESCRIPTION	SAMPLE			ASSAYS				
FROM	TO		NO.	% SULPH. IDES	FOOTAGE		%	%	OZ. TON	OZ. TON
				FROM	TO	TOTAL				
		250.6 to 254.8: feldspar porphyry dyke; chilled upper and lower contact at 30° and 25° to CIA respectively								
254.8	350.0	Chloritic Andesite (Carbonatized). - fine-grained, dark green as previous with sections of up to 5% quartz-carbonate alteration evident in stringers and interstitial growths: 263.7 to 264.4 } quartz-carbonate 265.2 to 266.3 } veins at 40 to 45° 267.5 to 267.8 } to CIA; slight rose carbonate at lower vein.	3319	263.5	268.0	4.5	10	<.001		
		298.4 to 298.9 } moderate, diffuse 301.0 to 302.0 } epidote alteration cut by 3% thin smoky-quartz and quartz-carbonate fracture infillings.								
350.0		End of Hole								



Asquith Resources Inc.
Section 2+00W
Facing West
Kubiac Property
Asquith Township
Scale 1 inch = 50 feet.



ASQUITH RESOURCES INC.
 DIAMOND DRILL HOLE
 LOCATION PLAN
 CLAIMS L 979555-979556
 DDH'S KB9¹ to ⁴ incl.
 ASQUITH TSP.
 Scale 1" = 200' JAN/89
 J.L. TIMALE ASSOCIATES INC

DIAMOND DRILL RECORD

J. L. TINDALE & ASSOCIATES INC.
 907-110 Erskine Ave.
 Toronto, Ontario M4P 1Y4

NAME OF PROPERTY ASQUITH TOWNSHIP PROPERTY
 HOLE NO. K89-4 LENGTH 342 Feet
 LOCATION ASQUITH TOWNSHIP - KUBIC PROPERTY - C GRID
 LATITUDE 43° 00' DEPARTURE 8.57 S
 ELEVATION _____ AZIMUTH 360° DIP -45°
 STARTED JANUARY 22 FINISHED JANUARY 23, 1989

FOOTAGE	DIP	AZIMUTH	FOOTAGE	DIP	AZIMUTH
150'	44°				
342'	43°				

HOLE NO. 89-4 SHEET NO. 1
 REMARKS Casing Pilled.
 LOGGED BY K.W. Johnson

FOOTAGE		DESCRIPTION	SAMPLE				ASSAYS				
FROM	TO		NO.	% SULPHIDES	FOOTAGE FROM	FOOTAGE TO	FOOTAGE TOTAL	%	%	OZ/TON	OZ/TON
0.0	17.0	Casing for 17.0 feet.									
17.0	144.0	<p>Diabase.</p> <p>- fine to medium grained, medium to fine crystalline, medium to coarse grained, chilled marginal lower contact 1 foot from surface.</p>									
144.0	144.0	<p>Continued (144.0 to 144.0).</p> <p>- fine grained, white, with up to 10% magnetite, medium to coarse grained, chilled marginal lower contact 1 foot from surface.</p>									

ONTARIO GEOLOGICAL SURVEY
 ASSESSMENT FILES
 OFFICE
 FEB 17 1989
 RECEIVED

DIAMOND DRILL RECORD

NAME OF PROPERTY KURINE PROPERTY.
HOLE NO. KB34 SHEET NO. 2

FOOTAGE		DESCRIPTION	SAMPLE			ASSAYS				
FROM	TO		NO.	% SULPH IDES	FOOTAGE		%	%	OZ. TON	OZ. TON
					FROM	TO				
		112.0 to 113.0: Sheared and carbonated section with stringers of 30% silica quartz.								
		122.2 to 123.3: irregular white carbonaceous vein with thin stringers of quartz. Vein at 12° dip. Carbonaceous 20% white feldspar and red/pink potassium feldspar growths at contacts, 1% biotite in irregular patches.	3320		122.0	123.0	1.0		0.158	
		at 133.0 quartz vein and irregular sheared and fractured carbonated chloritic interstitial quartz-carbonate stringers decrease to 5%. at 141.0 feldspar vein with irregular chloritic patches.								
141.0	176.0	Chloritic Andesite - fine-grained dark green schist at 45° to CIA with 5% quartz-carbonate alteration								

RIGGS - MONTGOMERY - 366-1188

DIAMOND DRILL RECORD

NAME OF PROPERTY LUCIAS PROPERTY
HOLE NO. 1804 SHEET NO. 3

FOOTAGE		DESCRIPTION	SAMPLE			ASSAYS						
FROM	TO		NO.	% SULPH. IDES	FOOTAGE FROM TO TOTAL	%	%	02. TON	07 TON			
		quartz.										
		- contacts carbonate alteration - occurs to 2% in structure and fracture fillings by 168.0 feet.										
		167.2 to 167.9: Lead - quartz - carb. vein at 45° to cfm. show evidence alteration of vein selvages.										
			2321		174.0	176.0	2.0					
176.0	180.0	Quartz - Carbonate Vein	3321		176.0	176.8	0.8					
		- contacts at 50° to cfm. carbonate alteration and chlorite vein selvages; full white carbonate (with calcite) occurs as coarse granule at selvages on this fracture filling within quartz 162.0.	3322		176.8	180.0	3.2					
			3324		180.0	182.0	2.0					
		176.6 to 176.8 - altered quartz vein with thin secondary quartz carbonate - cementation quartz; traces quartz carbonate; 10% chlorite in selvages within quartz.										
		176.6 to 176.8 chlorite selvage.										

9111-998 - 368-1100 - 5308

DIAMOND DRILL RECORD

NAME OF PROPERTY KUCIAK PROPERTY
HOLE NO. K89-4 SHEET NO. 4

FOOTAGE		DESCRIPTION	SAMPLE			ASSAYS						
FROM	TO		NO.	% SULPHIDES	FOOTAGE		%	%	02 TON	07 TON		
					FROM	TO	TOTAL					
		176.8 to 180.0: bull with quartz veins, no mineralization noted. <u>1/6</u> <u>V.G.</u>										
180.0	219.2	fine grained Anorthite - fine grained dark green with 5% thin quartz carbonate epithermal fillings occurring throughout										
		203.0 to 212.6: quartz carbonate epithermal veins 2 inch width with 1% quartz epithermal										
		- at 203.0 epithermal alteration decreases: quartz-carbonate alteration at 5% in thin stringers and fracture fillings at 30" to CIA: epithermal in occasional brecciated section.										
		236.2 to 239.6: breccia zone with sharp upper contact at 40" to CIA. <u>237.0</u>	237.0		236.0	237.0	1.5					

RIGGS - ONTARIO - 366-1166

DIAMOND DRILL RECORD

NAME OF PROPERTY KUBINC PROPERTY
 HOLE NO. 183-9 SHEET NO. 5

FOOTAGE		DESCRIPTION	SAMPLE			ASSAYS				
FROM	TO		NO.	% SULPHIDES	FOOTAGE FROM TO TOTAL	%	%	GT. TON	GT. TON	
		epidote alteration of brecciated clasts cut by quartz-carbonate stringers (secondary).								
		246.1 to 247.6: epidote alteration of breccia zone - trace quartz	2216		246.0 247.0 2.0					
		265.5 to 266.0: quartz-carbonate vein at 35° to CIA; trace iron-carb. and pyrite.	2221		265.0 267.0 2.0					
2193	300.5	Feldspar Biotite Dykes - medium to coarse grained dyke with 10% red-potassic feldspar mixed with 20% white plagioclase feldspar in granular of coarse euhedral chlorite granules.	2222		295.0 299.0 5.0					
300.5	312.0	Sheared Chloritic Andesite - moderately bleached and altered with epidote from lower contact of granite.								

RIG TORONTO - 366-1166

DIAMOND DRILL RECORD

NAME OF PROPERTY KUBIAC PROPERTY.
 HOLE NO. K89-A SHEET NO. 6

FOOTAGE		DESCRIPTION	SAMPLE			ASSAYS				
FROM	TO		NO.	% SULPHIDES	FOOTAGE					
				FROM	TO	TOTAL	%	%	GT. TON	GT. TON
		at 30° to CIA; trace pyrite at contact; < 3% quartz; carbonate fracture; traces of altered andesite at 20° to 50° to CIA.								
		229.4 to 330.7 : carbonate quartz zone; irregular contacts; olive green to white with < 5% quartz.	329		329.0	331.0	2.0			
		231.1 to 234.8 : 1/2 inch quartz - carbonate vein at 10° to CIA with 3% coarse pink feldspar at vein slopes.								
342.0		End of Hole.								

RIDGES MONTGOMERY - 366-1168

DIAMOND DRILL RECORD

J. L. TINDALE & ASSOCIATES INC.
 907-110 Erskine Ave.
 Toronto, Ontario M4P 1Y4

NAME OF PROPERTY ASQUITH TOWNSHIP PROPERTY
 HOLE NO. K89-4 LENGTH 342 Feet
 LOCATION ASQUITH TOWNSHIP - KUBIAC PROPERTY - C' GRID
 LATITUDE L0100 DEPARTURE 8.57 S
 ELEVATION _____ AZIMUTH 360° DIP -45°
 STARTED JANUARY 22 FINISHED JANUARY 23, 1989

FOOTAGE	DIP	AZIMUTH	FOOTAGE	DIP	AZIMUTH
150'	44°				
342'	43°				

HOLE NO. 89-4 SHEET NO. 1
 REMARKS Casing Pilled.

LOGGED BY K.W. Johnson

FOOTAGE		DESCRIPTION	SAMPLE			ASSAYS					
FROM	TO		NO.	% SULPHIDES	FOOTAGE		%	%	OZ/TON	OZ/TON	
					FROM	TO	TOTAL				
0.0	17.0	Casing in Overburden									
17.0	95.9	Diabase - fine to medium grained intrusive; fresh appearance; green-grey in colour; slightly magnetic in places; equigranular; chilled margin at lower contact 1 foot from slugs.									
95.9	144.0	Carbonatized Chloritic Tuff. - fine-grained chloritic schist with up to 5% thin quartz-carbonate fracture fillings and stringers parallel to foliation at 35° to CIA; two generations of veining evident and exhibit cross-cutting relationships.									
		102.7 to 103.2: diabase; black, fine grained with chilled margins.									

LANGRIDGES - TORONTO - 366-1168

DIAMOND DRILL RECORD

NAME OF PROPERTY KURIAS PROPERTY
 HOLE NO. K894 SHEET NO. 2

FOOTAGE		DESCRIPTION	SAMPLE			ASSAYS				
FROM	TO		NO.	% SULPHIDES	FOOTAGE		%	%	OZ. TON	GT. TON
				FROM	TO	TOTAL				
		112.0 to 113.0: sheared and carbonatized section with stringers at 30° to CIA; trace pyrite.								
		122.2 to 122.7: irregular quartz - carbonate vein with thin stringers of main mass; vein at 15° to CIA contains 20% white feldspar and red/pink potassic feldspar growths at contacts; 1% biotite in irregular partings.	3320	122.0	123.0	1.0			5435	0.158
		- at 133.0 grades into medium-grained sheared and mottled carbonatized chloritic volcanic; quartz-carbonate stringers decrease to <1%; at 144.0 feet grade into very fine-grained chloritic andesite.								
144.0	176.0	Chloritic Andesite - fine-grained, dark green schist at 45° to CIA with <1% quartz-carbonate alteration								

DIAMOND DRILL RECORD

NAME OF PROPERTY KUPIAC PROPERTY
 HOLE NO. K89-4 SHEET NO. 3

FOOTAGE		DESCRIPTION	SAMPLE			ASSAYS				
FROM	TO		NO.	% SULPHIDES	FOOTAGE		%	%	OZ. TON	OZ. TON
				FROM	TO	TOTAL				
		evident.								
		-quartz-carbonate alteration increases to 2% in stringers and fracture fillings by 168.0 feet.								
		167.2 to 167.9: 1 inch quartz-carb. vein at 45° to CIA; slight epidote alteration at vein selvages.	3321		174.0	176.0	2.0		126	
176.0	180.0	Quartz-Carbonate Vein	3322		176.0	176.8	0.8		326	
		-contacts at 50° to CIA; moderately schistose, and chloritic vein selvages; buff white carbonate (white calcite) occurs as coarse grains at selvages or thin fracture fillings within quartz itself.	3323		176.8	180.0	3.2		485	
			3324		180.0	182.0	2.0		97	
		176.0 to 176.6: sheared quartz vein with 40% secondary quartz-carbonate cross-cutting quartz; trace pyrite in carbonate; 10% chlorite in partings within quartz.								
		176.6 to 176.8: chloritic schist.								

DIAMOND DRILL RECORD

NAME OF PROPERTY KUBIAK PROPERTY.

HOLE NO. K89-4

SHEET NO. 4

FOOTAGE		DESCRIPTION	SAMPLE			ASSAYS				
FROM	TO		NO.	% SULPH. IDES	FOOTAGE		%	%	OZ. TON	OZ. TON
					FROM	TO				
		176.8 to 180.0 : bull white quartz vein; no mineralization noted; <u>No V.G.</u>								
1800	219.3	Fine-Grained Andesite - fine grained, dark green with 5% thin quartz-carbonate-epidote fracture-fillings occurring throughout								
		202.0 to 202.6: quartz-carbonate-epidote vein; 1/2 inch width with 1% coarse pyrite.								
		- at 203.0 epidote alteration decreases: quartz-carbonate alteration at 5% in thin stringers and fracture-fillings at 30° to CIA; epidote evident in occasional brecciated section.								
		236.2 to 237.6: breccia zone with sharp upper contact at 40° to CIA; moderate	3325		236.0	237.5	115		1831	

DIAMOND DRILL RECORD

NAME OF PROPERTY KUBIAC PROPERTY
 HOLE NO. 189-4 SHEET NO. 5

FOOTAGE		DESCRIPTION	SAMPLE				ASSAYS				
FROM	TO		NO.	% SULPHIDES	FOOTAGE			%	%	OZ. TON	GT. TON
					FROM	TO	TOTAL				
		epidote alteration of brecciated clasts cut by quartz-carbonate stringers (secondary).									
		246.1 to 247.6: epidote alteration of breccia zone; trace pyrite.	3326		246.0	248.0	2.0		91		
		265.5 to 266.0: quartz-carbonate vein at 35° to CIA; trace iron-carb. and pyrite.	3327		265.0	267.0	2.0		69		
279.3	300.5	Feldspar Porphyry Dyke - medium to coarse-grained dyke with 10% red-potassic feldspar mixed with 20% white plagioclase feldspar in groundmass of coarse euhedral chlorite grains.	3328		285.0	290.0	5.0		39		
300.5	342.0	Sheared Chloritic Andesite - moderately bleached and altered with epidote from lower contact of porphyry									

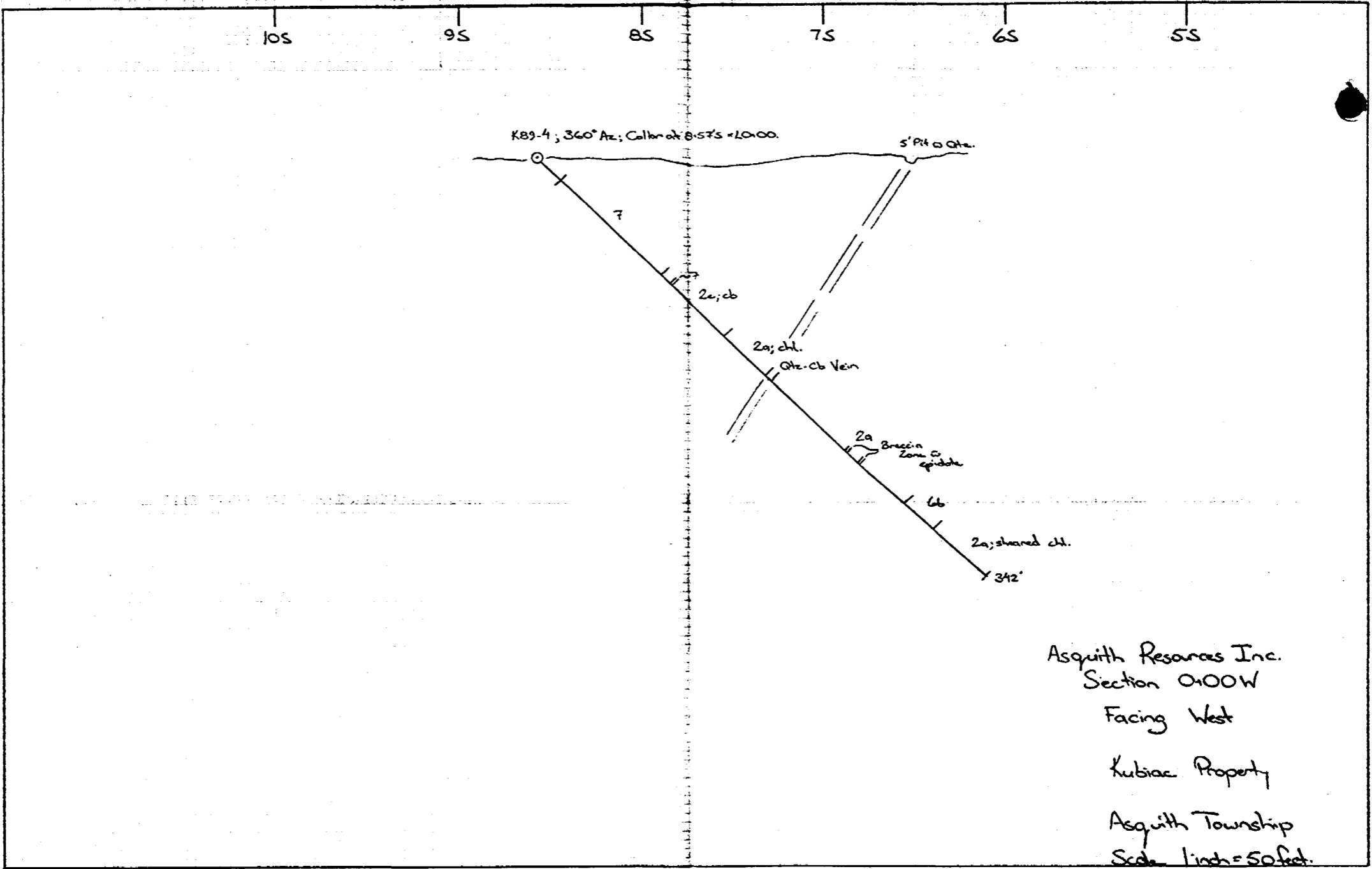
RIGGS - TORONTO - 366-1168

DIAMOND DRILL RECORD

NAME OF PROPERTY KUBIAC PROPERTY.
 HOLE NO. K89-4 SHEET NO. 6

FOOTAGE		DESCRIPTION	SAMPLE			ASSAYS				
FROM	TO		NO.	% SULPHIDES	FOOTAGE		%	%	OZ. TON	OZ. TON
					FROM	TO				
		at 30° to CIA; trace pyrite at contact; < 3% quartz; carbonate fracture. fillings at altered andesite at 30° to 50° to CIA;								
		329.4 to 330.7; carbonate-epidote zone; irregular contacts; olive-green to white with < 5% quartz.	3329	329.0	331.0	2.0		44		
		334.1 to 334.8; 1/2 inch quartz-carbonate vein at 10° to CIA with 3% coarse pink-feldspar at vein edges.								
342.0		End of Hole.								

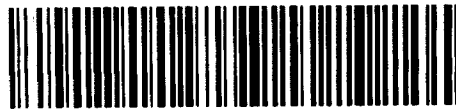
RIDGES - TORONTO - 366-1166



Asquith Resources Inc.
 Section 0100W
 Facing West
 Kubicac Property
 Asquith Township
 Scale 1 inch = 50 feet.



DOCUMENT W8906



41P11SE0155 33 ASQUITH

900

Name and Postal Address of Recorded Holder
ASQUITH RESOURCES INC. T4759
 907 - 110 Erskine Ave., Toronto, Ont. M4P 1Y4

Summary of Work Performance and Distribution of Credits

Total Work Days Cr. claimed 1390	Mining Claim			Work Days Cr.	Mining Claim			Work Days Cr.	Mining Claim		
	Prefix	Number			Prefix	Number			Prefix	Number	
for Performance of the following work. (Check one only)	see attached list										
<input type="checkbox"/> Manual Work											
<input type="checkbox"/> Shaft Sinking Drifting or other Lateral Work.											
<input type="checkbox"/> Compressed Air, other Power driven or mechanical equip.											
<input type="checkbox"/> Power Stripping											
<input checked="" type="checkbox"/> Diamond or other Core drilling											
<input type="checkbox"/> Land Survey											

All the work was performed on Mining Claim(s): L979555, L979556

Required Information eg: type of equipment, Names, Addresses, etc. (See Table Below)

Drill Contractor: MacKenzie Drilling Ltd.
 Box 53, Timmins, Ont. P4N 7C5
 Drill : Longyear - 38 Core Size: BQ
 Dates of Drilling: Jan. 18/89 - Jan. 24/89
 Supervision By : J. L. Tindale & Associates Inc.
 907 - 110 Erskine Ave.
 Toronto, Ont. M4P 1Y4
 Core Storage : on Racks @ Roy Annetts, Shining Tree, Ont.
 Hole No's. : K89-1 to 4 inclusive
 Map of Claims for distribution of credits attached

ONTARIO GEOLOGICAL SURVEY
 ASSIGNMENT FILED
 OFFICE
 FEB 17 1989
 RECEIVED

RECORDED
 FEB 2 1989
 Receipt # _____

CARBER LAKE MINING DIV.
 RECEIVED
 FEB 2 1989
 AM 9:00 PM

Date of Report: Jan. 30/89
 Recorded Holder or Agent (Signature): *J. L. Tindale*

Certification Verifying Report of Work

I hereby certify that I have a personal and intimate knowledge of the facts set forth in the Report of Work annexed hereto, having performed the work or witnessed same during and/or after its completion and the annexed report is true.

Name and Postal Address of Person Certifying
 J. L. Tindale, 907 - 110 Erskine Ave., Toronto, Ont. M4P 1Y4
 Date Certified: Jan. 30/89
 Certified by (Signature): *J. L. Tindale*

Table of Information/Attachments Required by the Mining Recorder

Type of Work	Specific Information per type	Other Information (Common to 2 or more types)	Attachments
Manual Work	Nil	Names and addresses of men who performed manual work /operated equipment, together with dates and hours of employment.	Work Sketch: these are required to show the location and extent of work in relation to the nearest claim post.
Shaft Sinking, Drifting or other Lateral Work			
Compressed air, other power driven or mechanical equip.	Type of equipment	Names and addresses of owner or operator together with dates when drilling/stripping done.	Work Sketch (as above) in duplicate
Power Stripping	Type of equipment and amount expended. Note: Proof of actual cost must be submitted within 30 days of recording.		
Diamond or other core drilling	Signed core log showing; footage, diameter of core, number and angles of holes.	Nil	Nil
Land Survey	Name and address of Ontario land surveyer.		

REPORT OF WORK

Summary of Work Performance & Dist. of Credits

Mining Claims

<u>Prefix</u>	<u>Claim No.</u>				
L]	979554	40	1046154	40	798910 40
]	979555	40	798899	40	798911 40
]	979556	40	798894	40	798912 40
	979557	40	798895	40	919019 40
	979558	40	798900	40	919020 40
	979559	40	798901	40	919021 40
	979560	40	798902	40	919022 32
	979561	40	798903	40	919023 40
	1048645	40	798904	40	919024 40
	1048646	40	798905	40	919025 40
	980046	40	798906	40	
	980047	40	798907	40	
	980048	40	798908	40	
	980049	40	798909	40	

35 claims

REFERENCES

AREAS WITHDRAWN FROM DISPOSITION

- M.R.O. - MINING RIGHTS ONLY
- S.R.O. - SURFACE RIGHTS ONLY
- M.+S. - MINING AND SURFACE RIGHTS

Description	Order No.	Date	Disposition	File
① M.N.R. RESERVE			S.R.O.	163003
② M.N.R. RESERVE			S.R.O.	163005
③ WASTE DISPOSAL		2/9/81	S.R.O.	
④ SEC 36/80 W 91/81 28/8/81 S.R.O. 18857				
⑤ withdrawal Sec 36/80 Mining Act, Order w 91/81 28/8/81 Surface rights only withdrawn				
⑥ withdrawal Sec 36/80 Mining Act, Order w 91/81 30/01/86 Surface mining rights withdrawn				
⑦ withdrawal Sec 36/80 Mining Act, Order w 27/86 09/04/86 Surface mining rights withdrawn				
⑧ withdrawal Sec 36/80 Mining Act, Order w 40/86 30/04/86 Surface mining rights withdrawn Order No. O-39187				

APPLICATION FOR SURFACE RIGHTS
PENDING - PUBLIC LAND ACT FEBRUARY 12/1985

SAND and GRAVEL

①	M.T.C.	P.I.	489
②	M.T.C.	Gravel P.I.	No 3C 14
③	Gravel P.I.	File	124425
④	M.T.C.	P.I.	3C 16
⑤	M.T.C.	Gravel P.I.	No 3C 15

NOTICE OF FORESTRY ACTIVITY

THIS TOWNSHIP / AREA FALLS WITHIN THE

SHININGTREE MANAGEMENT UNIT

AND MAY BE SUBJECT TO FORESTRY OPERATIONS



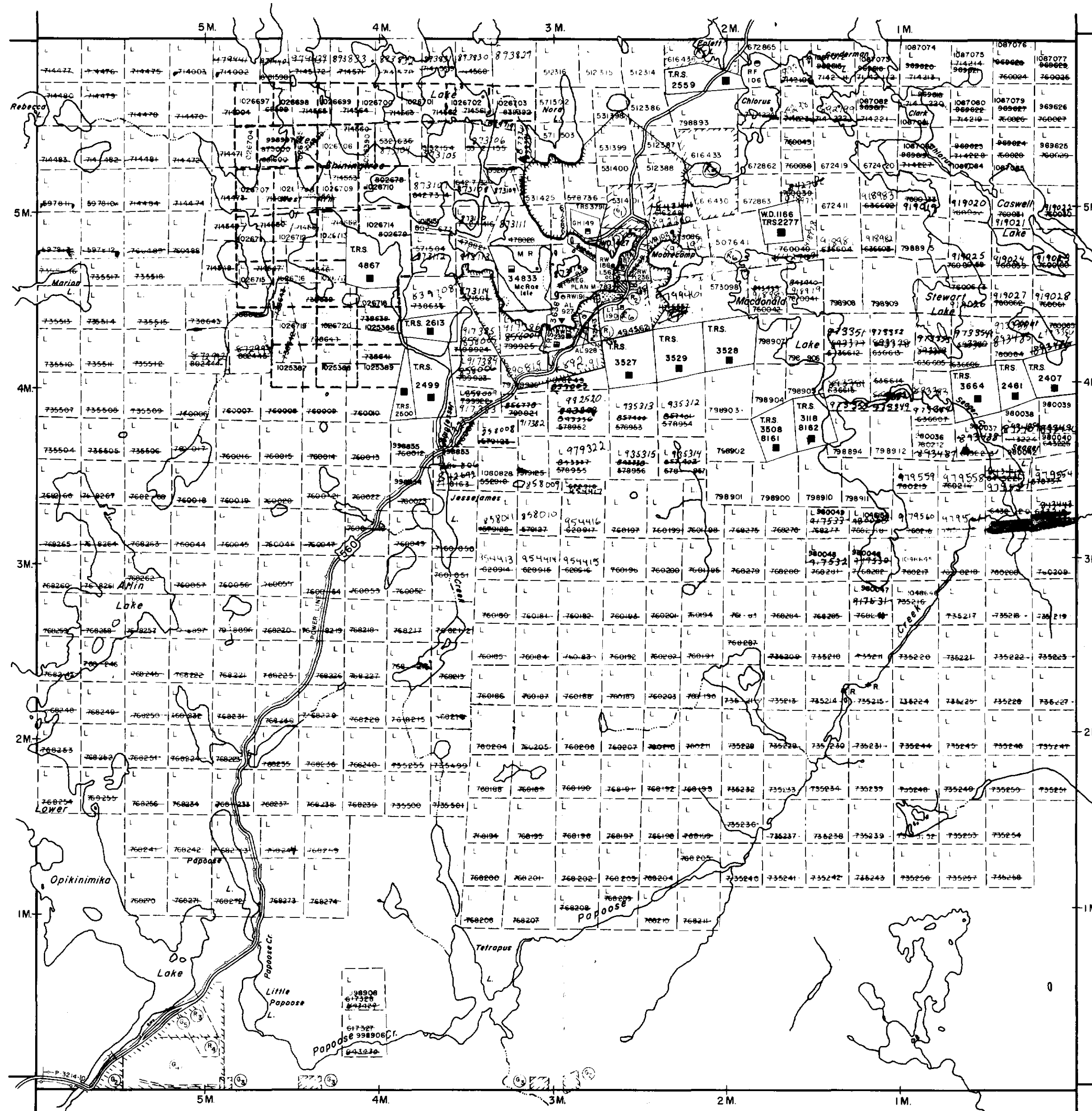
41P115E0155 33 ASQUITH

200

geology reference-COBALT

RESIDENT GEO.

Churchill Twp.



LEGEND

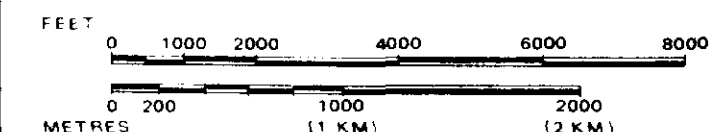
- HIGHWAY AND ROUTE No.
- OTHER ROADS
- TRAILS
- SURVEYED LINES:
 - TOWNSHIPS, BASE LINES, ETC.
 - LOTS, MINING CLAIMS, PARCELS, ETC.
- UNSURVEYED LINES:
 - LOT LINES
 - PARCEL BOUNDARY
 - MINING CLAIMS ETC.
- RAILWAY AND RIGHT OF WAY
- UTILITY LINES
- NON-PERENNIAL STREAM
- FLOODING OR FLOODING RIGHTS
- SUBDIVISION OR COMPOSITE PLAN
- RESERVATIONS
- ORIGINAL SHORELINE
- MARSH OR MUSKIEG
- MINES
- TRAVERSE MONUMENT

DISPOSITION OF CROWN LANDS

TYPE OF DOCUMENT	SYMBOL
PATENT, SURFACE & MINING RIGHTS	●
" SURFACE RIGHTS ONLY	○
" MINING RIGHTS ONLY	◐
LEASE, SURFACE & MINING RIGHTS	■
" SURFACE RIGHTS ONLY	◼
" MINING RIGHTS ONLY	◻
LICENCE OF OCCUPATION	▼
ORDER-IN-COUNCIL	OC
RESERVATION	⊙
CANCELLED	⊘
SAND & GRAVEL	⊙

NOTE: MINING RIGHTS IN PARCELS PATENTED PRIOR TO MAY 6, 1913, VESTED IN ORIGINAL PATENTEE BY THE PUBLIC LANDS ACT, R.S.O. 1970, CHAP. 380, SEC. 63, SUBSEC. 1.

SCALE: 1 INCH = 40 CHAINS



TOWNSHIP

ASQUITH

M.N.R. ADMINISTRATIVE DISTRICT

GOGAMA

MINING DIVISION

LARDER LAKE

LAND TITLES / REGISTRY DIVISION

SUDBURY



Date FEBRUARY, 1985

Number

G-3206