

Diamond Drilling



41P11SW0027 14 CHURCHILL

010

Township of Churchill

Report NO: 14

Work performed by: Tri-Bridge Cons. Gold Mines Ltd.

Claim NO	Hole NO	Footage	Date	Note
L421516	T-4	255'	July/75	(1)
	T-5	266'	July/75	(1)

Notes: (1) #212-75 Asquith Twp.

DIAMOND DRILL RECORD

PROPERTY	: Tri-Bridge Cons. Gold Mines Ltd.	HOLE NO.	: T-4
LOCATION	: Gosselin Bay, West Shiningtree Lake, Churchill Township, Dist. of Sudbury, Ont.	DIP	: -45°
CLAIM NO.	: 421516	BEARING	: S 60° W
LATITUDE	: 550' W & 550' N of #2 P of	LENGTH	: 255 ft.
DEPARTURE	: Claim 421546, small point south end of Gosselin Bay.	BEGUN	: July 13/75
DRILLED BY	: Ferguson Mining Services	COMPLETED	: July 17/75
		LOGGED BY	: H. Dowhaluk
		CORE SIZE	: IAX

0.0-4.3 : OVERBURDEN. Casing.
 4.3-14.5 : CARBONATE-TUFFITE. Med greenish gray to gray. About half carbonate, effervesces vigourously w HCl. Fairly massive to faintly schistose. Qtz-carb in fractures w less than 1% py.
 14.5-24.5 : FELDSPAR PORPHYRY. Pasty lt gray groundmass with darker specks of chlorite and euhedral to subhedral phenocrysts of plagioclase. Slight carbonate content and little or no pyrite.
 24.5-255.0 : CARBONATE-TUFFITE. As above w carbonate content varying from 25-60%. Some schistosity but usually vague starting @30° and becoming 45° towards end of hole. Small lenses of cherty material, lt gray, glassy, dense. Small rounded, elongated fragments can be seen on rare occasions. Chert shows bedded aspects.
 30.0-30.9: QUARTZ VEIN. Clear white, glassy quartz w some suffused darker material. Some fine pyrite.
 166.5-210: Phase w much sericite going into sericite schist in places.
 186.0-187.7: 30% qtz-carb lenses w 3% py, stringer zone.

END OF HOLE - 255 ft.

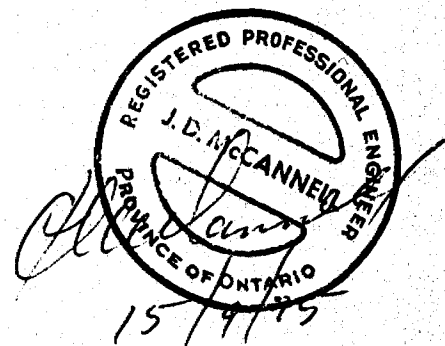


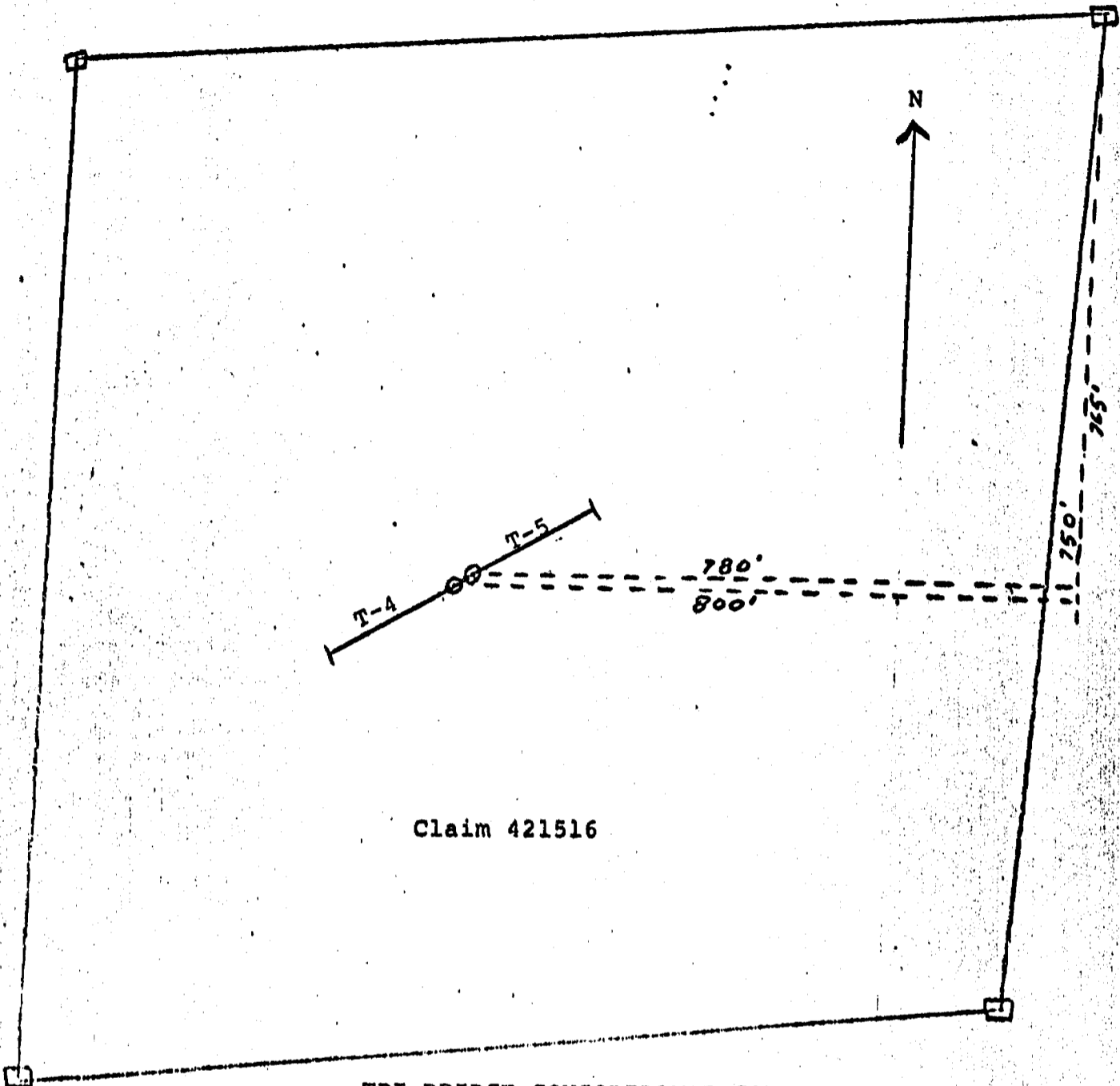
DIAMOND DRILL RECORD

PROPERTY : Tri-Bridge Cons Gold Mines Ltd.
 LOCATION : Gosselin Bay, West Shiningtree
 Lake, Churchill Township, Dist.
 of Sudbury.
 CLAIM NO. : 421516
 LATITUDE : 573' W & 538' N of #2 P of
 DEPARTURE : Claim 421516, small point at
 south end of Gosselin Bay.
 DRILLED BY : Ferguson Mining Services

HOLE NO. : T-5
 DIP : -45°
 BEARING : N 60°E
 LENGTH : 266 ft.
 BEGUN : July 17/75
 COMPLETED : July 31/75
 LOGGED BY : H. Dowhaluk
 CORE SIZE : IAX

0.0-3.3 : OVERBURDEN to 2.9 ft. From 2.9-3.3 some vein material, 2" qtz.
 3.3-11.7 : CARBONATE-TUFFITE. Lt gray, over 50° carbonate. Usually w
 about 1% pyrite. Some schistosity at 40°. Qtz-carb lines
 and veinlets in the fractures.
 11.7-16.2 : QUARTZ VEIN. White w about 10% remnant chlorite-sericite w
 up to 1% py in spots.
 16.2-18.5 : SHEAR ZONE. Lt gray. Brecciated and silicified w shearing
 at 45°. Less than 1% py.
 18.5-41.8 : FELDSPAR PORPHYRY. Med gray. Groundmass dense w subhedral
 white phenocrysts. Hard, compact.
 41.8-47.8 : CHLORITIC TUFFITE. Dk green, argillaceous appearance, some py.
 47.8-49.7 : GRAY FELSITE. A phase of the feldspar porphyry but without
 phenocrysts. A contact phase, dense.
 49.7-82.0 : GREENSTONE. Med gray-green. Dense. Decreasing schistosity
 @ 45°. Few qtz-carb lines.
 82.0-104.7 : CARBONATE-TUFFITE. Med gray. Fairly massive. High carbonate.
 104.7-167.0 : DIABASE. Sharp contact. Dk green-black. Some greenish white
 phenocrysts of feldspar near the contact.
 167.0-241.8 : RHYOLITE. Buffy to yellowish white. Dense, hard, massive.
 Abundant, irregular qtz-carb lines usually with small
 amounts of pyrite.
 224.5-224.9 : Yellowish white sand.
 241.8-266.0 : ANDESITE. Med-gray, bleached, altered, some carbonate.
 Some qtz-carb lines.
 245.0-246.0; 247.0-249.5 : Lost core.





Claim 421516

TRI-BRIDGE CONSOLIDATED GOLD MINES LTD.
ASQUITH & CHURCHILL TOWNSHIPS
ONTARIO
Scale 1" = 200'



15/9/75

#212-75 Asquith

Churchtop
M719



900

West

Shiningtree

Cochrane

Lake

Sovillo

Lake

Judson

Lake

Belle

Lake

Gosport

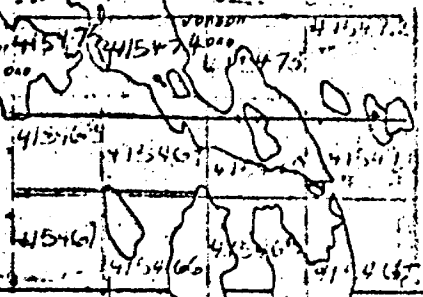
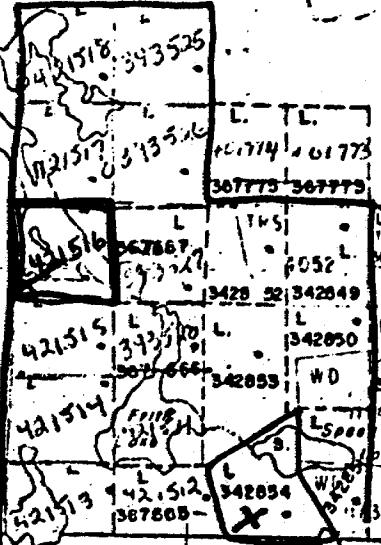
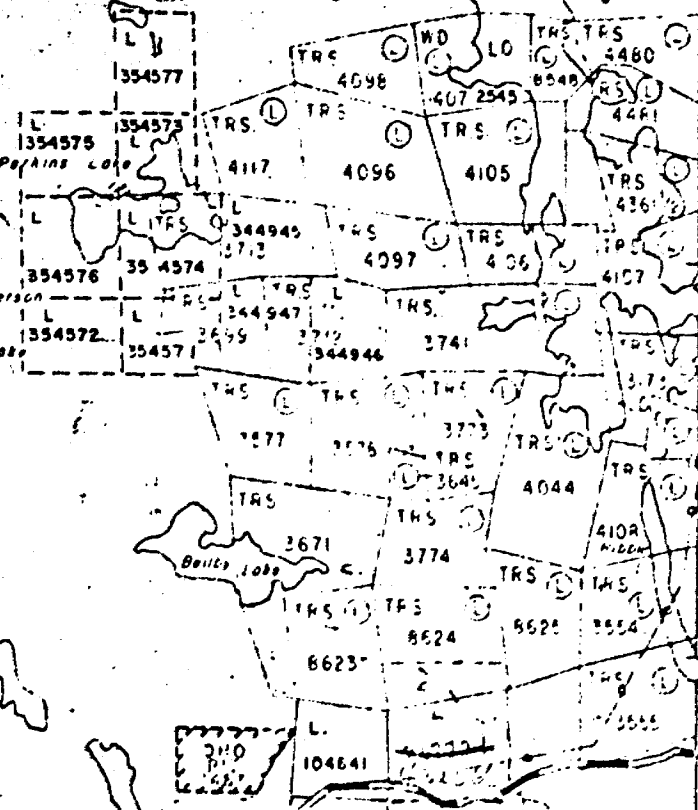
Lake

HF 40

RF 41

Crydorman

Lake



5M

4M

3M

2M

Asquith Twn (M-637)